

Weekly Market Summary

Published by
Missouri Department
Of Agriculture
Division of Market Information
and Outreach



Lowell Mohler, Director
Lloyd Wilson, Division Director
Mike Davis, Editor
<http://www.mda.mo.gov>
<http://www.ams.usda.gov/marketnews.htm>

Bob Holden, Governor

Volume XXIII, Number 22 573-751-4211, PO Box 630, Jefferson City, MO 65102 Friday May 30, 2003

Weekly Slaughter Hog Quotations

Location	Type	Monday	Tuesday	Wednesday	Thursday	Friday
St. Joseph	B & G Bulk & Top Sows - Range	Holiday	40.00-40.50 Scarce	39.50-40.00 26.00-29.00	39.50-40.00 Scarce	Closed
St. Paul	B & G Bulk & Top Sows - Range	Holiday	40.50-41.00 27.00-30.00	39.50-40.00 27.00-30.00	40.00-40.50 27.00-30.00	41.00-41.50 28.00-30.00

MISSOURI WEEKLY FEEDER CATTLE WEIGHTED AVERAGE REPORT

Receipts 10,184, Week ago 26,166, Year ago 8,307
WEIGHTED AVERAGES
Medium and Large 1 (Medium Flesh)

Fdr. STEERS:		Fdr. HEIFERS:		Hols. STEERS	
365 lbs	109.41	364 lbs	95.07	387 lbs	81.69
452 lbs	104.80	454 lbs	92.75	473 lbs	75.82
550 lbs	97.58	545 lbs	86.17	559 lbs	72.22
632 lbs	90.08	627 lbs	81.68	716 lbs	62.06
768 lbs	86.75	743 lbs	76.03		
852 lbs	80.25				

SOUTHERN MISSOURI WEEKLY SUMMARY (Mountain Grove and West Plains) Cattle

Receipts 3500 Week ago 4597 Year ago 2388

Compared to last week Steers and Heifers steady to 2.00 higher, Slaughter Cows and Bulls steady to 2.00 higher.

STEERS:		HEIFERS:	
Medium and Large 1		Medium and Large 1	
weight	price	weight	price
300-400	104.00-111.00	300-400	87.00-95.00
400-500	98.00-108.00	400-500	88.50-97.00
500-600	90.00-101.00	500-600	81.50-87.00
600-700	83.50-92.50	600-700	76.00-84.50
750-800	78.00-84.50	700-760	74.75-78.25
865-870	75.00-77.00		

HOLSTEINS: Large 3
350-450 scarce
450-500 scarce
500-550 scarce
550-700 scarce
700-850 scarce

SLAUGHTER COWS: Breaking and Boning (70-85% lean) 42.50-48.00 high dressing 48.00-52.50
SLAUGHTER BULLS: Yield Grade 1-2, 1200-2200 52.00-60.00 high dressing 58.50-65.00.

COW AND CALF PAIRS: Medium and Large 1-2, 4-6 yrs, 1000-1100 lbs with 100 to 200 lb calves 770.00-860.00 per pair.
REPLACEMENT COWS: Medium and Large 1-2, 4-7 yrs 1100-1450 lbs 2nd and 3rd stage 570.00-665.00 per head.

WEST CENTRAL MISSOURI WEEKLY SUMMARY (Boonville, Kingsville, Sedalia) Cattle:

Receipts 1448, Week ago 3649, Year ago 1530
Compared to last week: Steers and Heifers steady to 1.00 higher, Slaughter cows and bulls 1.00 to 2.00 higher.

FEEDER STEERS:		FEEDER HEIFERS:	
Medium and Large 1		Medium and Large 1	
weight	price	weight	price
300-400	Scarce	300-400	91.50-105.00
400-500	97.50-197.50	400-500	88.50-100.00
500-600	92.00-104.50	500-600	81.50-97.00
600-700	84.00-95.50	600-700	80.25-84.25
700-800	80.75-82.25	700-800	Scarce
800-900	Scarce	800-900	Scarce

SLAUGHTER COWS: Breaking & Boning (70-85%lean) 38.25-49.75. High dressing 44.25-53.25 Lean (85-90%) 35.25-41.25
REPLACEMENT COWS: Medium and Large 1-2, 2 yrs-ss 800-1415 lbs 1st-3rd stage 550.00-850.00 per head.

SLAUGHTER BULLS: Medium and Large 1-2, 2 yrs to ss, Yield Grade 1-2; 1350-2090lbs 49.75-57.25. high dressing 54.75-61.75.
COW AND CALF PAIRS: Medium and Large 1-2, 2 yrs to ss, 800-1200 lbs with baby-325 lb calves 650.00-835.00 per pair.

SOUTHWEST MISSOURI WEEKLY SUMMARY (Joplin, Springfield and Humansville)

	Feeder Cattle	Cows and Bulls	Dairy Cattle
Receipts	953	1000	Mtn. Grove
Week ago	8270	1450	400
Year ago	1019	1000	5-28-03

Compared to last week: Feeder Steers and Heifers steady to 1.00 higher, Slaughter Cows 1.00-2.00 higher, Slaughter Bulls 2.00 to 3.00 higher.

STEERS:		HEIFERS:	
Medium and Large 1&1-2		Medium and Large 1	
weight	price	weight	price
300-400	scarce	300-400	scarce
400-500	106.00-114.00	400-500	86.00-92.00
500-600	88.00-99.50	500-600	82.00-87.25
600-700	83.00-88.50	600-700	77.50-84.50
700-800	scarce	700-800	scarce
800-900	scarce	800-900	scarce

S.W. Mo. Continued)

HOLSTEINS:

Large Frame 3
Weight price
300-400 78.00-84.00
400-500 69.50-78.50
600-700 69.50-78.50
700-800 60.00-63.00
800-900 scarce
900-1000 scarce

REPLACEMENT COWS:

Medium and Large 1-2, 2-7 yrs
2nd to 3rd stage, 790-1115 lbs,
575.00-750.00 per head.

COW\CALF PAIRS: Medium
and Large 1-2; 900-1050 lbs 4
yrs to bm, with baby-300 lb
calves 710.00-835.00

SLAUGHTER COWS:

Breakers & Boners (70-85% lean)
43.00-50.50, Lean (85-90% lean)
39.00-44.00

SLAUGHTER BULLS:

Yield grade 1-2, 1125-2430 lbs
51.50-59.75, high dressing 60.25-
62.25.

Dairy Cattle Sales

Springer Heifers: Supreme 1390.00-
1420.00, Approved 1240.00-
1410.00. Open Heifers Approved
700-800 lbs 860.00-940.00, 600-700
lbs 820.00-880.00, 540-600 lbs
760.00-820.00 Replacement Cows
Milking Approved 850.00-975.00
Replacement Cows Springers
Supreme 1150.00-1270.00,
Approved 810.00-1050.00.

EAST CENTRAL MISSOURI WEEKLY SUMMARY

(Bowling Green, Kingdom City, Cuba, and Columbia)

Cattle

Receipts 3000, Week ago 5795, Year ago 2710

Feeder Steers firm and Heifers unevenly steady. Slaughter cows uneven.

FEEDER STEERS:

Medium and Large 1& 1-2
weight price
300-400 107.00-119.00
400-500 95.50-106.50
500-600 87.50-104.00
600-700 82.50-96.00
700-725 few 82.50-85.50
800-875 scarce

FEEDER HEIFERS:

Medium and Large 1 & 1-2
weight price
300-400 92.00-100.50
400-500 85.50-98.50
500-600 83.50-92.50
600-700 79.00-84.00
700-725 few 76.50-78.50

SLAUGHTER BULLS:

Yield Grade 1-2,
1350-2450 lbs 53.00-59.00, high
dressing scarce

SLAUGHTER COWS:

Lean, Breaking and Boning, (70-90
percent lean) 39.00-49.00, high
dressing 45.00-55.00, low
dressing 30.00-40.00

SLAUGHTER STEERS:

Choice 2-3 1100-1400 lbs,
79.00-82.90.

SLAUGHTER HEIFERS:

Choice 2-3 1000-1250 lbs, 78.00-
80.00.

NORTHEAST MISSOURI WEEKLY SUMMARY

(Palmyra, New Cambria, and Green City)

Feeder Cattle:

Receipts 145
Week ago 2070
Year ago 347

Slaughter Cattle:

Receipts 28
Week ago 60
Year ago 75

Feeder Steers and Heifers not tested, Slaughter cows 2.00-3.00 higher.
Slaughter Steers and Heifers 3.00 higher.

FEEDER STEERS:

Medium and Large 1-2
weight price
300-400 scarce
400-500 104.00-106.00
500-600 scarce
600-700 scarce
700-800 scarce

FEEDER HEIFERS:

Medium and Large 1-2
weight price
300-400 scarce
400-500 88.50-93.50
500-600 90.00
600-700 scarce
700-800 scarce

SLAUGHTER COWS:

Breaking and Boning (75-85%
lean) 44.00-49.00, low dressing
39.00-44.00, high dressing
51.25-53.75.

SLAUGHTER BULLS:

Yield Grade 1-2 1800-2650 lbs
47.50-53.00.

SLAUGHTER HEIFERS:

Choice 2-3, 1000-1300 lbs. 81.35-
83.90.

SLAUGHTER STEERS:

Choice 2-3, 1100-1400 lbs
81.25-83.40.

SOUTH CENTRAL MISSOURI WEEKLY SUMMARY

(Olean and Vienna)

Receipts 1394, week ago 1741, year ago 1028

Feeder Steers and Heifers steady, Slaughter Cows 2.00 to 4.00 higher.

FEEDER STEERS:

Medium and Large 1
weight price
300-400 Scarce
400-500 99.00-106.25
500-600 95.50-104.50
600-700 87.50-95.50
700-800 74.50-78.00

FEEDER HEIFERS:

Medium and Large 1 and 2
weight price
300-400 92.00-99.00
400-500 87.00-95.25
500-600 82.75-89.50
600-700 77.50-81.50

SLAUGHTER COWS:

Breaking and Boning(70-85%
lean) 43.00-48.00, Lean 37.00-
42.00.

SLAUGHTER BULLS:

Yield Grade 1-2 1600-2000 lbs
50.00-53.00.

COW\CALF PAIRS:

Medium and Large 1-2, Scarce

REPLACEMENT COWS:

Medium and Large 1-2, 2yrs-ss,
1000-1350 lbs, 2nd and 3rd stage
600.00-745.00.

SOUTHEAST MISSOURI WEEKLY SUMMARY

(Patton Junction and Fruitland)

Receipts 356, Week ago 1476, Year ago 243

Compared to last week Feeder Steers 1.00-3.00 lower, Heifers steady to
3.00 lower, Slaughter Cows 1.00 higher, and Bulls 3.00 higher.

FEEDER STEERS:

Medium and Large 1-2
weight price
300-400 92.25-104.00
400-500 87.00-97.50
500-600 84.50-93.00
600-700 80.00-88.00
700-800 76.00-76.25
850-875 70.00-72.00

FEEDER HEIFERS:

Medium and Large 1-2
weight price
300-400 88.00-91.00
400-500 81.50-88.50
500-600 80.00-89.50
600-700 72.00-78.00
700-800 71.00-74.00

SLAUGHTER COWS:

Breaking and Boning (75-85% lean)
37.25-46.50, high dressing 42.00-
50.25.

REPLACEMENT COWS:

Medium and Large 1-2, 3-7 yrs,
875-1430 lbs, 3rd stage, 655.00-
660.00 per head.

SLAUGHTER BULLS:

Y.G. 1-2, 1305-2030lbs 48.75-
53.00, high dressing 56.00.

COW AND CALF PAIRS:

Medium and Large 1-2, 3-7 yrs
895-1455 lbs. 200-300 lb calves
805.00-833.00 per pair.

**MISSOURI WEEKLY DIRECT
SLAUGHTER CATTLE REPORT**

Weekly Receipts 1200, Week ago 400; Year ago 1200

Trade active mid-week ,live sales and dressed sales steady with 2 weeks
ago.

STEERS:

Live sales: 60-80% Choice 1150-
1200 lbs 80.00 few 79.00

STEERS AND HEIFERS:

Carcass sales: Heifers 70% Choice
2 loads 1150 lbs 128.00.

HEIFERS:

Live sales: 60-80% Choice 1100-
1200 lbs 80.00 few 79.00

GRADE AND WEIGHT: (Grid)

Choice 550-950 lbs 130.00-132.00
Select 550-950 lbs 113.00-115.00

INTERIOR MISSOURI DIRECT HOGS

Weekly Receipts 9,880, Week ago 10,271; Year ago 13,697

Weekly Top: Friday 53.00

BARROWS AND GILTS:

Steady to 1.00 lower
Base Carcass 52.00-53.00

SOWS:

Steady
300-500 lbs 23.00-26.00
over 500 lbs 27.00-30.00

**MISSOURI WEEKLY DIRECT
WEANER AND FEEDER PIG REPORT**

Receipts: 6643 [FOB 4118, Delivered 2525]
Compared to last week, weaner pigs steady, feeder pigs steady, demand and supply moderate. (Prices per head)

Early weaned pigs 10 lb base weights
FOB the farm
3588 head 10 lbs. 21.00-33.00 weighted average 28.11

Early weaned pigs 10 lb base weights
Delivered to IA and IND
1200 head 10 lbs 29.00-30.00

Feeder pigs in all lot sizes:
FOB the farm
530 head 40 lbs at 41.46

Feeder pigs in all lot sizes:
Delivered
1325 head 45-50 lbs 40.50-50.45 weighted average 48.2 lbs at 46.88

WEEKLY LIVESTOCK SLAUGHTER

	<u>CATTLE</u>	<u>HOGS</u>	<u>SHEEP</u>
Week to date	652,000	1,505,000	46,000
Last Week	763,000	1,807,000	49,000
Last Year	630,000	1,583,000	51,000
2003 Yr to dt	14,288,000	40,308,000	1,182,000
2002 Yr to dt	14,331,000	40,430,000	1,329,000

MIDWEST SHEEP REVIEW

Slaughter Receipts:
This week 46,000
Week ago 49,000
Year ago 51,000

Slaughter Lambs steady
Slaughter Ewes steady
Feeder Lambs steady

SLAUGHTER EWES:
Utility and Good 1-3, 30.00
Cull 1, 20.00-25.00 (per cwt.)

SLAUGHTER LAMBS: Ch & Pr
90-150 lbs; new crop 106.00-
108.00. shorn 104.00-106.00 (per
cwt.)

FEEDER LAMBS:
50-70 lbs 100.00-110.00, 70-90
lbs 90.00-100.00 (per cwt.)

MISSOURI WEEKLY HAY SUMMARY

The weather just keeps getting better for curing hay. A couple poor days over the weekend, but other than that most of the state has seen very nice temperatures and some slight to moderate breeze this week, just about perfect for making hay. As a state we are doing pretty well with harvest, As of Tuesday morning 40% of the first cutting of Alfalfa is complete, and 17% of other hay was complete. Cattle prices are steadily working higher, we once again hit the magic 80.00 fat cattle this week, which may put some money in the farmers pockets to buy some hay with. Prices mostly steady. Prices per ton unless specified). Supreme quality alfalfa 110.00-160.00. Premium quality alfalfa 80.00-110.00. Prairie hay 65.00-85.00, Good quality brome hay 80.00-115.00. Good quality large round bales mixed grass hay 15.00-25.00, Good red clover hay 60.00-80.00. Fair quality large round bales Fescue 10.00-25.00 per bale. Wheat hay 50.00-60.00. Wheat straw 1.50-2.25 per small square.

MIDWEST EGG REVIEW

Prices on large .04 higher, medium .01 higher, small steady. IOWA-MINNESOTA-WISCONSIN: Prices paid to producers. (Cents per dozen) Large .44-.48, Medium .32-.34, Small .12-.16.

**WHOLESALE FEEDSTUFFS PRICES
(DOLLARS PER TON-BULK BASIS)**

Area	Soybean Meal 48% Solvent	Cottonseed Meal 41% Solvent	Meat Meal	Wheat Middlings
Kansas City	200.90	153.75	167.00	54.00
St. Louis	207.50	157.00	188.50	60.00
Memphis	201.00	133.00	----	62.00
Decatur	201.00	----	----	----

Weekly Average Prices as of May 28, 2003

WEEKLY COMMODITY GRAIN FUTURES TRENDS

Compared to last Friday: Soybeans .03 to .06 lower, Wheat .02 to .03 higher, Corn steady to .01 higher, Soybean meal nearbys .60 lower, others .10 to .50 higher, KC Wheat .01 to .02 higher, (all price trends approximate ranges).

Daily Grain Futures Closes

	Mon	Tues	Wed	Thur	Fri
Soybeans					
Jul	holiday	630 1/2	623	630	624 1/2
Aug		627 3/4	620 3/4	627 1/4	623
Sep		592 3/4	587	592 3/4	588
Nov		561 1/2	556 3/4	562 1/4	560 1/4
Jan		565 1/2	560 1/4	566	564 3/4
Wheat					
Jul	holiday	327 1/2	319	324	324 1/4
Sep		332 1/4	324 3/4	329 3/4	330
Dec		341 3/4	334 3/4	339 3/4	340 1/2
Mar		346 1/2	340 1/2	345	345 3/4
May		335	331	334	337
Corn					
Jul	holiday	242	241 1/4	245	244 1/4
Sep		239 3/4	239 1/4	243 1/4	243
Dec		240 1/2	240 1/2	244 1/4	243 1/2
Mar		246	246	250	249 1/4
May		249 3/4	250	253 3/4	253
KC Wheat					
Jul	holiday	331 1/2	326 1/4	329 3/4	327 1/4
Sep		335 1/4	329	333 1/2	332
Dec		342 1/2	338	341	340
Mar		347	342	345 1/2	344 1/2
May		341 3/4	337	341 1/2	340
SB Meal					
Jul	holiday	194.10	190.60	192.10	190.20
Aug		191.30	188.60	190.10	188.60
Sep		184.30	182.20	183.90	182.70
Oct		171.10	169.50	170.90	170.90
Dec		169.70	168.40	169.60	169.80

WEEKLY COMMODITY LIVE FUTURES TRENDS

Compared to last Friday: Live Cattle 1.58 to 4.90 higher, Lean Hogs 1.43 to 3.35 higher, Pork Bellies 2.25 to 2.85 higher, Feeder Cattle 1.12 to 1.45 higher.

Daily Live Futures Closes

	Mon	Tues	Wed	Thur	Fri
Cattle					
May	holiday	78.45	79.95	81.00	82.00
Jun		74.37	75.25	75.55	75.57
Jul		70.90	71.50	71.40	71.10
Aug		69.57	70.05	69.90	69.75
Oct		70.62	71.02	70.92	70.60
Lean Hogs					
Jun	holiday	63.07	64.07	64.22	64.85
Jul		64.10	66.10	66.72	67.52
Aug		64.55	66.52	67.37	68.30
Oct		54.92	56.47	56.62	57.82
Dec		53.32	54.77	54.47	55.35
Prk Bel					
May	holiday	96.50	-----	-----	-----
Jul		93.92	96.42	96.40	96.25
Aug		90.32	92.85	92.62	92.72
Feb		78.75	80.30	80.15	80.15
Mar		78.50	80.20	80.20	80.20
Fdr. Cat.					
Aug	holiday	85.12	85.62	85.45	85.30
Sep		85.55	85.95	85.70	85.57
Oct		85.72	86.15	85.90	85.77
Nov		85.97	86.50	86.12	85.95
Jan		85.00	85.42	84.85	84.70

Toll Free Market News Hotline
1-866-704-7574

May 30, 2003

MISSOURI GRAIN WEEKLY TRENDS

Soybeans .03 to .05 lower
 Wheat steady to .30 lower
 Corn steady to .01 lower
 Grain Sorghum steady to .02 lower

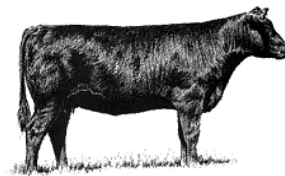
Weekly Missouri Selected Cash Grain Bids

Area	#1 Soybean	#2 Soft Wheat	#2 Corn	#2 Grain Sorghum
Kansas City				
Monday	Holiday			
Tuesday	6.31-6.34	2.97	2.42-2.44	3.96
Wednesday	6.25-6.27	2.91	2.41-2.43	3.95
Thursday	6.30-6.32	2.95	2.45-2.47	4.02
Friday	6.25-6.27	2.92	2.45-2.46	4.00
St. Louis				
Monday	Holiday			
Tuesday	6.31	3.31	2.54	4.21
Wednesday	6.27	3.22	2.56	4.23
Thursday	6.35	3.26	2.60	4.28
Friday	6.28	3.27	2.59	4.26
Central				
Monday	Holiday			
Tuesday	6.13-6.21	2.97-3.10	2.29-2.37	3.83
Wednesday	6.06-6.11	2.89-3.01	2.28-2.36	3.82
Thursday	6.13-6.18	2.93-3.06	2.32-2.40	3.89
Friday	6.08-6.13	2.94-3.06	2.31-2.39	3.87
S.E. Mo.				
Monday	Holiday			
Tuesday	6.27-6.29	3.23-3.26	2.47-2.48	3.96-4.16
Wednesday	6.20-6.22	3.14-3.18	2.46-2.47	4.00-4.14
Thursday	6.26-6.30	3.19-3.23	2.50-2.51	4.07-4.21
Friday	6.18-6.24	3.19-3.23	2.46-2.50	4.05-4.19

(PRICES PER BU. EXCEPT GR. SORG. PER CWT)
 * NEW CROP

The Weekly Market Summary is available to anyone for an \$18.00 annual subscription fee. To subscribe, send your check or money order to: Weekly Market Summary, Missouri Department of Agriculture, PO Box 630, Jefferson City, Missouri, 65102

“Show-Me Select” Bred Heifer Sales



Heifers have met minimum standards for reproductive soundness, pelvic size, body condition and weight and are free of blemishes. Heifers have been graded and screened by MDA/USDA certified graders. Heifers have been bred to bulls meeting strict calving ease/birth weight EPD requirements. A strict immunization program has been followed including official Brucellosis calfhood vaccination, a negative test prior to the sale. Many have been synchronized and will calve in a short time period.

Friday June 06, 2003

Kingsville Livestock Auction, Kingsville, MO

Selling 140 Angus/Angus cross, Red Angus cross, Simmental cross heifers. Calving dates from August 30 to November 8, 2003.

More Information Contact: David Hoffman 816-380-8460 or Greg Onstott 573-690-7125 or 573-751-7766.