

Weekly Market Summary

Published by
Missouri Department
Of Agriculture
Division of Market Information
and Outreach



Peter W. Hofherr, Director
Lloyd Wilson, Division Director
Mike Davis, Editor
<http://www.mda.mo.gov>
<http://www.ams.usda.gov/marketnews.htm>

Bob Holden, Governor

Volume XXIII, Number 46 573-751-4211, PO Box 630, Jefferson City, MO 65102 Friday November 14, 2003

Weekly Slaughter Hog Quotations

Location	Type	Monday	Tuesday	Wednesday	Thursday	Friday
St. Joseph	B & G Bulk & Top Sows - Range	35.00-35.50 28.00-33.00	Closed	35.00-35.50 27.00-32.00	34.00-34.50 27.00-32.00	Closed
St. Paul	B & G Bulk & Top Sows - Range	34.50-35.00 28.00-33.00	33.50-34.00 28.00-32.00	33.50-34.00 27.00-31.00	33.00-33.50 27.00-31.00	33.00-34.00 27.00-31.00

MISSOURI WEEKLY FEEDER CATTLE WEIGHTED AVERAGE REPORT

Receipts 39,912, Week ago 35,237, Year ago 36,779
WEIGHTED AVERAGES
Medium and Large 1 (Medium Flesh)

Fdr. STEERS:		Fdr. HEIFERS:		Hols. STEERS:	
359 lbs	121.20	369 lbs	108.76	346 lbs	89.75
457 lbs	111.34	456 lbs	101.07	434 lbs	87.89
553 lbs	105.79	545 lbs	96.22	552 lbs	83.57
645 lbs	101.74	643 lbs	93.04	641 lbs	80.37
744 lbs	100.36	724 lbs	95.83	755 lbs	78.53
848 lbs	102.12	835 lbs	92.47	836 lbs	80.64
929 lbs	98.86	970 lbs	83.75		

SOUTHERN MISSOURI WEEKLY SUMMARY (Mountain Grove and West Plains)

Cattle

Receipts 6000, Week ago 6323, Year ago 9638

Compared to last week Steers, Holsteins, and Heifers steady to 2.00 higher, times of 2.00 to 5.00 higher. Slaughter Cows steady to 2.00 higher and Bulls 2.00 higher.

STEERS:

Medium and Large 1	
weight	price
350-400	111.00-120.00
400-450	105.50-115.00
450-500	100.00-110.50
500-600	98.00-107.50
600-700	94.50-104.00
700-800	96.00-105.50
800-900	92.50-100.00

HEIFERS:

Medium and Large 1	
weight	price
300-400	100.00-107.00
400-500	91.00-102.00
500-600	87.00-97.00
600-700	89.00-96.00
lot 721	94.50

SLAUGHTER COWS: Breaking and Boning (70-85% lean) 42.00-54.00 high dressing 47.00-57.00

SLAUGHTER BULLS: Yield Grade 1-2, 1250-2130 50.00-59.00, high dressing 61.00-65.00.

REPLACEMENT COWS:

Medium and Large 1-2, 4 yrs to ss, 975-1450 lbs, 2nd and 3rd stage, 660.00-830.00 per head.

COW AND CALF PAIRS:

Medium and Large 1-2, 4 yrs to ss, 900-1250 lbs with 200 to 400 lb calves 820.00-1030.00 per pair.

WEST CENTRAL MISSOURI WEEKLY SUMMARY (Kingsville, Sedalia)

Cattle:

Receipts 2979, Week ago 3252, Year ago 4032
Compared to last week feeder steers 500-900 lbs mostly 1.00 to 3.00 higher under 500 lbs steady with spots up to 5.00 lower. Feeder heifers under 700 lbs mostly 2.00 higher, spots 6.00-7.00 higher. Slaughter Cow and Bulls firm.

FEEDER STEERS:

Medium and Large 1 & 1-2	
weight	price
300-400	104.00-128.00
400-500	103.50-115.00
500-600	98.00-113.00
600-700	97.00-109.00
700-800	96.25-106.00
800-900	100.00-106.25

FEEDER HEIFERS:

Medium and Large 1 & 1-2	
weight	price
300-400	99.50-119.00
400-500	95.00-110.00
500-600	93.00-105.50
600-700	90.00-97.00
700-800	92.25-100.00
pkg 823	91.75

SLAUGHTER COWS:

Breaking & Boning (70-85%lean) 44.50-53.00. High dressing 49.75-61.00 Lean (85-90%) 38.00-44.00

REPLACEMENT COWS:

Medium and Large 1-2, 2yrs to ss, 950-1355 lbs 2nd and 3rd stage 650.00-840.00 per head.

SLAUGHTER BULLS:

Yield Grade 1-2; 1190-2290lbs 54.25-63.75.

COW AND CALF PAIRS:

Medium and Large 1-2, Scarce.

SOUTHWEST MISSOURI WEEKLY SUMMARY (Joplin and Springfield)

Feeder Cattle	Cows and Bulls	Dairy Cattle
Receipts 7200	1900	Norwood
Week ago 11,535	1900	11-13-2003
Year ago 9671	1350	1497

Compared to last week: Feeder Steers and Heifers calves very uneven 3.00 lower to 5.00 higher, yearlings not well tested. Cows and Bulls 2.00 to 3.00 higher.

STEERS:

Medium and Large 1	
weight	price
300-400	117.00-129.00
400-500	102.00-111.00
500-600	92.50-103.50
600-700	90.50-98.50
700-800	96.00-101.50
800-900	96.50-98.00

HEIFERS:

Medium and Large 1	
weight	price
300-400	103.00-114.00
400-500	92.00-103.00
500-600	87.50-96.00
600-700	87.50-96.50
700-800	87.50-95.00
800-900	83.00-89.00

S.W. Mo. Continued)

HOLSTEINS:

Large Frame 3	
Weight	price
300-400	Scarce
400-500	Scarce
500-600	80.00-86.00
600-700	82.75-78.50
700-800	75.50-79.00
800-900	81.00

REPLACEMENT COWS:

Medium and Large 1-2, 2 yrs to ss, 2nd- 3rd stage, 900-1250 lbs, 660.00-850.00 per head.

COW\CALF PAIRS: Medium and Large 1-2, 1000-1250 lbs, 5 yrs to bm, with baby to 350 lb calves 710.00-835.00 per pair.

SLAUGHTER COWS:

Breakers & Boners (70-85% lean) 49.00-57.50, Lean (85-90% lean) 43.50-47.50.

SLAUGHTER BULLS:

Yield grade 1-2, 1390-2320 lbs 59.00-67.00.

Dairy Cattle Sales

Springer Heifers: Supreme 1600.00-1820.00, Approved 1300.00-1620.00, Crossbred 910.00-1300.00, Open Heifers: Approved 700-800 lbs 960.00-975.00, 600-700 lbs 780.00-940.00, 500-600 lbs 675.00-880.00, 400-500 lbs 630.00-875.00. Baby Calves: Heifers 235.00-370.00, Bulls 100.00-150.00.

EAST CENTRAL MISSOURI WEEKLY SUMMARY

(Bowling Green, Kingdom City, Boonville)

Cattle

Receipts 5469, Week ago 5980 Year ago 5900.

Feeder Steers and Heifers calves steady to 5.00 higher, yearlings not well tested. Slaughter Cows unevenly steady.

FEEDER STEERS:

Medium and Large 1& 1-2	
weight	price
300-400	110.00-121.50
400-500	100.00-120.00
500-600	95.00-112.50
600-700	95.00-110.00
700-800	94.50-109.50
part load 833	105.00

SLAUGHTER BULLS:

Yield Grade 1-2, 1250-2250 lbs 52.50-57.50 high dressing 58.00-62.75

SLAUGHTER STEERS:

Choice with Prime ends 3, 101.00-106.50

FEEDER HEIFERS:

Medium and Large 1 & 1-2	
weight	price
300-400	101.00-113.00
400-500	95.00-113.50
500-600	94.00-107.00
600-700	89.00-98.00
700-750	88.00-98.00

SLAUGHTER COWS:

Lean, Breaking and Boning, (70-90 percent lean) 37.00-50.00, high dressing 48.00-57.00, low dressing 33.00-43.00

SLAUGHTER HEIFERS: Choice with Prime ends 3, 100.00-103.00

NORTHEAST MISSOURI WEEKLY SUMMARY

(Palmyra, New Cambria, and Green City)

Feeder Cattle:
Receipts 5073
Week ago 3975
Year ago 5217

Slaughter Cattle:
Receipts 196
Week ago 125
Year ago 181

Feeder Steers and Heifers 2.00 to 5.00 higher. Slaughter cows steady, Slaughter Steers and Heifers steady to 2.00 higher.

FEEDER STEERS:

Medium and Large 1-2	
weight	price
300-400	121.00-134.00
400-500	115.00-128.00
500-600	107.50-120.50
600-700	103.00-115.00
700-800	scarce
800-850	scarce

SLAUGHTER COWS:

Breaking and Boning (75-85% lean) 47.00-58.25.

SLAUGHTER STEERS:

Choice 2-3, 1100-1450 lbs 106.00-110.00

FEEDER HEIFERS:

Medium and Large 1-2	
weight	price
300-400	110.00-120.00
400-500	100.00-112.50
500-600	95.00-109.75
600-700	90.00-103.30
700-800	scarce
800-900	scarce

SLAUGHTER BULLS:

Yield Grade 1-2 1300-2150 lbs 52.50-61.25.

SLAUGHTER HEIFERS:

Choice 2-3, 1000-1350 lbs 98.50-104.25

SOUTH CENTRAL MISSOURI WEEKLY SUMMARY

(Cuba and Vienna)

Receipts 4673, week ago 3910, year ago 5229

Feeder Steers and Heifers under 600 lbs steady to 4.00 higher, over 600 lbs steady on a poor test. Slaughter cows 1.00 to 3.00 higher.

FEEDER STEERS:

Medium and Large 1& 1-2	
weight	price
350-400	118.00-124.00
400-500	105.00-116.00
500-600	100.00-110.25
600-700	95.00-108.00
700-800	95.00-100.00

SLAUGHTER COWS:

Boning(80-85% lean) 47.50-51.00, high dressing 51.50-54.25.

COW\CALF PAIRS:

Medium and Large 1-2, Scarce

FEEDER HEIFERS:

Medium and Large 1& 1-2	
weight	price
350-400	97.50-110.00
400-500	95.00-108.00
500-600	93.00-100.00
600-740	92.50-99.10
750-800	Scarce
800-960	Scarce

SLAUGHTER BULLS:

Yield Grade 1-2, 1300-2000 lbs 55.00-60.00. low dressing 53.00

REPLACEMENT COWS:

Medium and Large 1-2, 2-7 yrs, 950-1250 lbs, 1st to 2nd stage, 710.00-850.00.

SOUTHEAST MISSOURI WEEKLY SUMMARY

(Patton Junction and Fruitland)

Receipts 2308 Week ago 1675, Year ago 1875

Compared to last week Feeder Steers and heifers steady to 2.00 higher. Slaughter Cows steady and bulls 1.00 higher.

FEEDER STEERS:

Medium and Large 1-2	
weight	price
300-400	105.00-130.00
400-500	95.00-112.00
500-600	91.25-106.50
600-700	90.00-100.00
700-800	85.00-94.50
800-825	85.00-91.25

SLAUGHTER COWS:

Breaking and Boning (75-85% lean) 42.50-47.50, high dressing 48.00-53.00.

SLAUGHTER BULLS:

Y.G. 1-2, 1425-2240 lbs 53.25-56.50, high dressing 58.25-61.50.

FEEDER HEIFERS:

Medium and Large 1-2	
weight	price
300-400	94.50-111.00
400-500	90.00-101.50
500-600	85.00-96.50
600-700	87.00-99.50
700-775	83.50-91.00

REPLACEMENT COWS:

Medium and Large 1-2, 3-7 yrs, 910-1635 lbs, 2nd and 3rd stage, 630.00-920.00 per head.

COW AND CALF PAIRS:

Medium and Large 1-2, 2-7 yrs, 945-1610 lbs, 150-300 lb calves, 740.00-910.00 per pair.

**MISSOURI WEEKLY DIRECT
SLAUGHTER CATTLE REPORT**

Weekly Receipts 600, Week ago 400; Year ago 1000

Trade slow to moderate, live sales no reported sales, dressed sales on the grid basis weak to 5.00 lower. Demand and seller interest light to moderate.

STEERS:

Live sales: no sales

HEIFERS:

Live sales: no sales

STEERS AND HEIFERS:

Carcass sales: mixed load 70%Choice 1150 lbs 158.00

GRADE AND WEIGHT: (Grid)

Choice 550-950 lbs 160.00-175.00
Select 550-950 lbs 143.00-155.00

INTERIOR MISSOURI DIRECT HOGS

Weekly Receipts 11,283 Week ago 10,837 Year ago 11,046

Weekly Top: Monday 43.00

BARROWS AND GILTS:

2.00 to 3.00 lower
Base Carcass 40.00-42.00

SOWS:

steady
300-500 lbs 24.00-27.00
over 500 lbs 28.00-31.00

MISSOURI WEEKLY DIRECT WEANER AND FEEDER PIG REPORT

Receipts: 4034 [FOB 3004 Delivered 1030 compared to last week, weaner pigs steady. Insufficient number of feeder pigs for a test. National pigs were steady. Light demand for light supply.

Early weaned pigs 10 lb base weights
FOB the farm 27% Negotiated
3004 head 10 lbs. 25.50-33.00 weighted average 30.13

Early weaned pigs 10 lb base weights
Delivered 0% Negotiated
1030 head 10 lbs 31.50-32.04 weighted average 31.71

Feeder pigs in all lot sizes:
FOB the farm
No sales

Feeder pigs in all lot sizes:
Delivered
No sales

WEEKLY LIVESTOCK SLAUGHTER

	CATTLE	HOGS	SHEEP
Week to date	601,000	2,104,000	60,000
Last Week	601,000	2,146,000	58,000
Last Year	655,000	2,029,000	63,000
2003 Yr to dt	30,991,000	86,283,000	2,478,000
2002 Yr to dt	30,100,000	86,505,000	2,709,000

MIDWEST SHEEP REVIEW

Slaughter Receipts:
This week 60,000
Week ago 58,000
Year ago 63,000

Slaughter Lambs no trend
Slaughter Ewes 2.00-5.00 higher
Feeder Lambs 5.00 higher

SLAUGHTER EWES:
Utility and Good 1-3, 32.00-40.00
Cull 1, 25.00-32.00 (per cwt.)

SLAUGHTER LAMBS: Ch & Pr
90-150 lbs; shorn 88.00-90.00,
wooled 85.00-88.00.

FEEDER LAMBS:
60-80 lbs 100.00-110.00, 80-100
lbs 90.00-100.00 (per cwt.)

MISSOURI WEEKLY HAY SUMMARY

With the possibility that cold weather is here to stay, hay movement is beginning to see more action now. Most sellers report they are keeping the trucks pretty busy at the current time. Many of the neighboring state are experiencing the same troubles we are having here in MO trying to find high quality hay and are also jacking prices when it is found. It is still hard to miss all the piles of average to low quality hay stacked through out the state; even so some optimistic sellers believe that there is a possibility that prices on this hay may rise with the approaching winter as well. Hay supply is moderate to heavy, demand moderate, and prices are steady with a firm undertone. The Missouri Department of Agriculture has a hay hotline available, to be listed or for a directory call 1-800-877-HAY(4429) (All prices per ton unless specified and most reflect delivered price) Unless specified prices per ton and reflect delivered price. Supreme quality alfalfa 110.00-140.00. Premium quality alfalfa 80.00-110.00. Prairie hay 65.00-85.00, Good quality brome hay 60.00-100.00. Good quality timothy hay 3.00-3.50 per small square. Good large round bales mixed grass hay 15.00-25.00, Good red clover hay 50.00-75.00. Fair quality large round bales Fescue 10.00-20.00 per bale. Wheat straw 1.50-2.50 per small square.

MIDWEST EGG REVIEW

Prices on large .10 higher, medium .04-.06 higher, small steady. IOWA-MINNESOTA-WISCONSIN: Prices paid to producers. (Cents per dozen) Large .91-.95, Medium .73-.77, Small .43-.47.

WHOLESALE FEEDSTUFFS PRICES (DOLLARS PER TON-BULK BASIS)

Area	Soybean Meal 48% Solvent	Cottonseed Meal 41% Solvent	Meat Meal	Wheat Middlings
Kansas City	255.00	1950.00	260.00	88.50
St. Louis	267.50	190.00	257.50	87.50
Memphis	253.20	175.00	----	80.00
Decatur	254.50	----	----	----

Weekly Average Prices as of Nov 11, 2003

WEEKLY COMMODITY GRAIN FUTURES TRENDS

Compared to last Friday: Soybeans .20 to .30 higher, Wheat .12 to .30 higher, Corn .04 to .05 higher, Soybean meal 3.30 to 4.20 higher, KC Wheat .12 to .21 higher. (all price trends approximate ranges).

Daily Grain Futures Closes

	Mon	Tues	Wed	Thur	Fri
Soybeans					
Nov	757 1/2	777	769	771	773
Jan	762	775 3/4	770	776	778 1/2
Mar	753	764 3/4	762 3/4	769 1/2	772 1/4
May	723	726 1/2	730 1/2	737	746 3/4
Jul	708 1/4	711 1/2	713 1/4	718 1/2	729
Wheat					
Dec	383	389	403 1/2	405 3/4	405 1/2
Mar	396	399	414 1/2	417 3/4	416
May	389 3/4	390 1/2	405 1/2	408	404 1/2
Jul	355 3/4	357 1/2	366 1/4	367	366 1/2
Sep	361	362	369 1/2	370 1/2	370
Corn					
Dec	232 3/4	231 1/2	240 1/4	240 3/4	240 1/2
Mar	239 3/4	239 1/2	246 3/4	247	246 1/2
May	243 1/2	243 1/2	250 1/2	251	250 1/4
Jul	246	246 1/2	253 1/2	253 1/2	252 1/4
Sep	242 1/4	243	247	248 3/4	248 1/2
KC Wheat					
Dec	378 3/4	382 1/4	393	393	393 1/4
Mar	386 1/2	389 1/4	401 1/4	396 3/4	401 1/2
May	382	383 1/2	395 1/2	394 1/4	395 1/4
Jul	361 3/4	363 1/2	371 1/4	371	372
Sep	366	366	374	372 1/2	373
SB Meal					
Dec	240.70	244.70	244.70	244.70	242.70
Jan	238.60	242.70	242.50	242.40	241.00
Mar	235.50	236.60	239.70	240.10	238.20
May	226.70	228.70	228.70	231.20	230.70
Jul	221.10	222.90	222.80	225.50	225.30

WEEKLY COMMODITY LIVE FUTURES TRENDS

Compared to last Friday: Live Cattle 1.87 to 2.72 lower, Lean Hogs .80 to 3.30 lower, Pork Bellies 1.13 to 3.40 lower, Feeder Cattle Nov .20 lower others 1.30 to 2.95 lower.

Daily Live Futures Closes

	Mon	Tues	Wed	Thur	Fri
Cattle					
Nov	103.00	102.70	101.35	100.30	98.80
Dec	98.32	96.82	95.32	94.82	94.10
Jan	96.60	95.10	93.75	93.80	92.75
Feb	93.62	92.12	90.62	91.05	89.55
Apr	84.47	82.97	81.85	82.87	81.50
Lean Hogs					
Dec	52.67	50.75	50.07	50.05	50.35
Feb	59.32	57.72	56.45	56.62	56.42
Apr	61.37	60.35	59.47	60.02	60.00
May	62.25	61.85	61.40	61.80	62.00
Jun	65.30	64.47	63.90	64.65	64.62
Prk Bel					
Feb	85.15	85.05	85.62	87.45	86.92
Mar	84.37	84.50	84.92	86.30	86.02
May	86.35	86.10	86.40	88.00	87.05
Jul	89.40	87.50	87.75	89.00	89.00
Aug	90.00	87.20	87.50	88.50	88.50
Fdr. Cat.					
Nov	104.25	102.85	101.35	102.65	102.82
Jan	98.32	96.82	95.32	95.57	94.37
Mar	92.20	90.70	89.20	90.50	89.20
Apr	90.32	88.82	87.32	88.70	88.00
May	89.35	87.90	86.42	87.75	86.65

Market News Hotline
1-573-522-9244

November 14, 2003

MISSOURI GRAIN WEEKLY TRENDS

Soybeans .30 to .44 higher
Wheat .04 to .30 higher
Corn .02 to .06 higher
Grain Sorghum .10 to .34 higher

Weekly Missouri Selected Cash Grain Bids

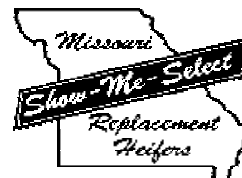
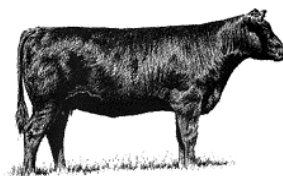
Area	#1 Soybean	#2 Soft Wheat	#2 Corn	#2 Grain Sorghum
<u>Kansas City</u>				
Monday	7.49	3.74-3.79	2.30-2.33	4.34-4.43
Tuesday	7.63	3.77-3.80	2.30-2.33	4.34-4.43
Wednesday	7.57	3.88-3.91	2.37-2.40	4.46-4.55
Thursday	7.63	3.88-3.91	2.38-2.41	4.48
Friday	7.66-7.67	3.88-3.91	2.38-2.41	4.48-4.57
<u>St. Louis</u>				
Monday	7.59-7.65	3.89-4.00	2.47-2.49	4.83
Tuesday	7.81-7.82	3.95-4.07	2.45-2.48	4.89
Wednesday	7.73-7.78	3.95-4.20	2.52-2.53	5.14
Thursday	7.75-7.84	3.97-4.23	2.53-2.54	5.14
Friday	7.77-7.88	3.99-4.25	2.53-2.54	5.16
<u>Central</u>				
Monday	7.37-7.38	3.58	2.15	3.66
Tuesday	7.51-7.52	3.64	2.15	3.66
Wednesday	7.45-7.47	3.79	2.22-2.25	3.79
Thursday	7.52-7.53	3.81	2.23-2.26	3.86
Friday	7.55-7.56	3.81	2.26	3.86
<u>S.E. Mo.</u>				
Monday	7.59-7.60	3.86-3.98	2.37-2.42	4.71-4.78
Tuesday	7.74-7.75	4.02-4.04	2.37-2.41	4.76-4.89
Wednesday	7.69-7.71	4.08-4.18	2.44-2.48	4.88-5.04
Thursday	7.75-7.77	4.11-4.21	2.45-2.47	4.89-5.05
Friday	7.77-7.85	4.10-4.20	2.44-2.48	4.87-5.11

(PRICES PER BU. EXCEPT GR. SORG. PER CWT)

* NEW CROP

The Weekly Market Summary is available to anyone for an \$18.00 annual subscription fee. To subscribe, send your check or money order to: Weekly Market Summary, Missouri Department of Agriculture, PO Box 630, Jefferson City, Missouri, 65102

“Show-Me Select” Bred Heifer Sales



Friday November 21, 2003 – 7:00 p.m.
Joplin Regional Stockyards - Carthage, MO
I-44 East of Carthage, MO at Exit 22

Selling approximately 410 bred heifers, 80 percent black or BWF. Breeds and crosses include: Angus, Brahman influence, Charolais, Gelbvieh, Hereford, Limousin, Red Angus, & Simmental.

Saturday November 29, 2003 – 11:00 a.m.
Kingsville Livestock Auction – Kingsville, MO
58 Hwy Kingsville, MO (45 miles SE of Kansas City)

Selling approximately 200 head of Angus, Angus cross, Polled Hereford, and Simmental cross Spring Calving Bred Heifers

Saturday November 29, 2003 – 1:00 p.m.
Lolli Livestock Market – Macon, MO

Selling approximately 275 bred heifers. Breeds and crosses include: Purebred Angus, Angus, Gelbvieh, and Simmental, with many black and BWF in the offering.

All heifers have met minimum standards for reproductive soundness, pelvic size, body condition, weight, and are free of blemishes. Heifers have been bred to bulls meeting strict calving ease/birth weight EPD requirements. A strict immunization program has been followed. Many have been synchronized, AI, and will calve in a short time period.

More Information call 1-877-532-8189