

# Weekly Market Summary

Published by  
Missouri Department  
Of Agriculture  
Division of Market Information  
and Outreach



Peter W. Hoffherr, Director  
Lloyd Wilson, Division Director  
Mike Davis, Editor  
<http://www.mda.mo.gov>  
<http://www.ams.usda.gov/marketnews.htm>

Bob Holden, Governor

Volume XXIII, Number 48 573-751-4211, PO Box 630, Jefferson City, MO 65102 Monday December 01, 2003

## Weekly Slaughter Hog Quotations

Location	Type	Monday	Tuesday	Wednesday	Thursday	Friday
St. Joseph	B & G Bulk & Top Sows - Range	34.00-34.50 27.00-30.00	34.50-35.00 27.00-31.00	35.50-36.00 27.00-31.00	Holiday	Closed
St. Paul	B & G Bulk & Top Sows - Range	34.50-34.50 28.00-31.00	34.00-35.00 27.00-31.00	34.00-34.50 27.00-31.00	Holiday	Closed

## MISSOURI WEEKLY FEEDER CATTLE WEIGHTED AVERAGE REPORT

Receipts 32,143, Week ago 39,912, Year ago 30,771  
WEIGHTED AVERAGES  
Medium and Large 1 (Medium Flesh)

Fdr. STEERS:		Fdr. HEIFERS:		Hols. STEERS	
369 lbs	125.51	369 lbs	111.31	365 lbs	82.45
456 lbs	117.12	455 lbs	103.99	460 lbs	89.64
547 lbs	109.55	541 lbs	99.56	550 lbs	83.72
641 lbs	105.97	646 lbs	97.59	631 lbs	83.42
749 lbs	106.51	738 lbs	101.38	812 lbs	81.00
832 lbs	113.07	820 lbs	102.59		
922 lbs	108.78				

## SOUTHERN MISSOURI WEEKLY SUMMARY

(Mountain Grove and West Plains)

### Cattle

Receipts 3700, Week ago 3483, Year ago 3833

Compared to last week Steers and Heifer calves steady to 2.00 higher, yearlings steady to weak. Slaughter Cows and Bulls 1.00 to 3.00 higher.

STEERS:		HEIFERS:	
Medium and Large 1		Medium and Large 1	
weight	price	weight	price
300-400	116.00-128.00	300-400	98.00-111.00
400-500	105.00-125.00	400-500	92.50-107.00
500-600	100.00-110.50	500-600	92.00-101.00
600-700	96.00-104.50	600-700	90.00-98.00
700-750	95.00-95.50		
800-900	Scarce		

**HOLSTEINS:** Large 3

300-400	85.00-90.00
400-500	89.00-90.00
550-750	80.00-83.00

**COW AND CALF PAIRS:**  
Medium and Large 1-2, 5 yrs-ss  
1050-1250 lbs with baby to 300 lb  
calves 870.00-990.00 per pair.

**SLAUGHTER COWS:** Breaking and Boning (70-85% lean) 46.50-57.00 high dressing 49.00-62.00

**SLAUGHTER BULLS:** Yield Grade 1-2, 1300-2250 57.00-67.50, high dressing 68.50-72.50.

**REPLACEMENT COWS:**  
Medium and Large 1-2, 3 yrs to ss,  
900-1400 lbs, 2<sup>nd</sup> and 3<sup>rd</sup> stage,  
630.00-820.00 per head.

## WEST CENTRAL MISSOURI WEEKLY SUMMARY

(Kingsville, Sedalia)

### Cattle:

Receipts 1957, Week ago 2795, Year ago 2594

Compared to last week feeder steers 3.00-5.00 higher, Feeder heifers uneven near steady, Cow and Bulls 2.00-3.00 higher.

FEEDER STEERS:		FEEDER HEIFERS:	
Medium and Large 1& 1-2		Medium and Large 1& 1-2	
weight	price	weight	price
300-400	109.00-128.00	300-400	100.00-109.00
400-500	104.00-123.00	400-500	95.00-108.75
500-600	95.00-114.00	500-600	93.00-100.75
600-700	94.00-106.00	600-700	90.00-94.00
700-800	96.00-103.00	700-800	Scarce
800-900	Scarce		

**SLAUGHTER COWS:** Breaking & Boning (70-85%lean) 47.00-52.75. High dressing 53.00-63.75 Lean (85-90%) 42.00-48.00

**REPLACEMENT COWS:** Medium and Large 1-2, 2 yrs to ss, 945-1405 lbs 2<sup>nd</sup> and 3<sup>rd</sup> stage 630.00-920.00 per head.

**SLAUGHTER BULLS:** Yield Grade 1-2; 1240-2040lbs 54.25-67.50.

**COW AND CALF PAIRS:** Medium and Large 1-2, 2 yrs-ss 900-1300 lbs with baby to 385 lb calves 875.00-1080.00 per pair.

## SOUTHWEST MISSOURI WEEKLY SUMMARY

(Joplin and Springfield)

Feeder Cattle	Cows and Bulls	Dairy Cattle
Receipts 3352	950	Springfield
week ago 10,165	1250	11-25-2003
Year ago 4905	450	628

Compared to last week: Feeder Steers and Heifers calves steady to 5.00 higher, yearlings not well tested. Cows and Bulls steady to 3.00 higher.

STEERS:		HEIFERS:	
Medium and Large 1		Medium and Large 1	
weight	price	weight	price
300-400	126.00-138.00	300-400	111.00-118.00
400-500	110.00-120.00	400-500	94.00-112.00
500-600	97.75-112.00	500-600	95.50-106.00
600-700	92.50-97.00	600-700	92.00-95.00
700-800	93.00-98.50	700-800	88.00-94.00
800-900	Scarce	800-900	Scarce

S.W. Mo. Continued)

**HOLSTEINS:**

Large Frame 3	
Weight	price
300-400	Scarce
400-500	Scarce
500-600	84.50
600-700	83.75
700-800	Scarce
800-900	81.00

**REPLACEMENT COWS:**

Medium and Large 1-2, 2 yrs to ss, 2nd- 3rd stage, 1000-1300 lbs, 685.00-850.00 per head.

**COW\CALF PAIRS:** Medium and Large 1-2, 1050-1200 lbs, 2 yrs to bm, with baby to 200 lb calves 850.00-1025.00 per pair.

**SLAUGHTER COWS:**

Breakers & Boners (70-85% lean) 50.00-58.50, Lean (85-90% lean) 42.50-50.50.

**SLAUGHTER BULLS:**

Yield grade 1-2, 1250-2110 lbs 63.00-69.00, high dressing 73.00-77.50.

**Dairy Cattle Sales**

Springer Heifers: Supreme 1600.00-1750.00, Approved 1300.00-1600.00, Crossbred 970.00-1390.00, Open Heifers: Approved 700-800 lbs 800.00-950.00, 600-700 lbs 860.00-960.00, 500-600 lbs 710.00-850.00, 400-500 lbs 700.00-870.00. Baby Calves: Heifers 230.00-410.00, Bulls 100.00-150.00.

**SOUTH CENTRAL MISSOURI WEEKLY SUMMARY**

(Cuba and Vienna)

Receipts 1260, week ago 4369, year ago 1166

Feeder Steers and Heifers 1.00-3.00 higher. Slaughter cows 1.00 to 4.00 higher.

**FEEDER STEERS:**

Medium and Large 1& 1-2	
weight	price
350-400	Scarce
400-500	111.00-119.50
500-600	105.00-111.50
600-650	100.00-103.00
700-800	Scarce
800-900	Scarce

**FEEDER HEIFERS:**

Medium and Large 1& 1-2	
weight	price
350-400	106.00-109.00
400-500	103.00-110.00
500-600	95.00-101.50
600-700	91.50-95.00
800-900	93.00-94.50

**SLAUGHTER COWS:**

Boning(80-85% lean) 50.00-57.50, high dressing 57.00-60.75.

**SLAUGHTER BULLS:**

Yield Grade 1-2, 1400-2000 lbs 55.00-63.00. high dressing 65.00.

**COW\CALF PAIRS:**

Medium and Large 1-2, Scarce

**REPLACEMENT COWS:**

Medium and Large 1-2, Scarce

**EAST CENTRAL MISSOURI WEEKLY SUMMARY**

(Bowling Green, Kingdom City, Boonville)

**Cattle**

Receipts 3954, Week ago 5199 Year ago 4425.

Feeder Steers and Heifers steady. Slaughter Cows firm-1.00 higher.

**FEEDER STEERS:**

Medium and Large 1& 1-2	
weight	price
350-400	115.00-121.50
400-500	100.00-120.00
500-600	97.00-109.00
600-700	95.00-106.50
700-800	95.85-105.50
800-900	95.00-105.50

**FEEDER HEIFERS:**

Medium and Large 1 & 1-2	
weight	price
300-400	103.00-110.00
400-500	95.00-110.50
500-600	90.50-100.50
600-700	90.00-98.00
700-750	90.00-97.00

**SLAUGHTER BULLS:**

Yield Grade 1-2, 1350-2250 lbs 54.50-60.00 high dressing 60.00-63.55.

**SLAUGHTER COWS:**

Lean, Breaking and Boning, (70-90 percent lean) 42.00-52.00, high dressing 52.00-59.00, low dressing 35.00-45.00

**SLAUGHTER STEERS:**

Choice 2-3, No Sale

**SLAUGHTER HEIFERS:** Choice

2-3, No Sale

**NORTHEAST MISSOURI WEEKLY SUMMARY**

(Palmyra, New Cambria, and Green City)

**Feeder Cattle:**

Receipts	4837
Week ago	2967
Year ago	4973

**Slaughter Cattle:**

Receipts	82
Week ago	130
Year ago	No Sale

Feeder Steers and Heifers 2.00-5.00 higher. Slaughter cows 1.00-2.00 higher, Slaughter Steers and Heifers steady.

**FEEDER STEERS:**

Medium and Large 1-2	
weight	price
300-400	118.00-125.00
400-500	112.00-123.25
500-600	106.50-117.00
600-700	102.25-112.10
700-800	102.85-113.50
800-900	107.00-115.40
900-950	109.00-113.00

**FEEDER HEIFERS:**

Medium and Large 1-2	
weight	price
300-400	109.50-116.75
400-500	100.00-110.00
500-600	97.00-107.00
600-700	95.75-109.75
700-800	96.50-110.00
800-900	100.50-104.00

**SLAUGHTER COWS:**

Breaking and Boning (75-85% lean) 50.50-58.25.

**SLAUGHTER BULLS:**

Yield Grade 1-2 1300-2200 lbs 61.50-63.50.

**SLAUGHTER STEERS:**

Choice 2-3, 1100-1400 lbs 98.00-101.60

**SLAUGHTER HEIFERS:**

Choice 2-3, 1000-1400 lbs 97.25-101.50

**SOUTHEAST MISSOURI WEEKLY SUMMARY**

(Patton Junction and Fruitland)

Receipts 1240 Week ago 1385, Year ago 1647

Compared to last week Feeder Steers 3.00-5.00 higher, heifers 2.00-4.00 higher. Slaughter Cows and bulls 2.00-3.00 higher.

**FEEDER STEERS:**

Medium and Large 1-2	
weight	price
300-400	114.00-125.00
400-500	107.00-118.00
500-600	97.00-109.00
600-700	89.00-99.50
700-775	85.00-89.75
800-900	79.50-89.50

**FEEDER HEIFERS:**

Medium and Large 1-2	
weight	price
300-400	93.00-104.00
400-500	93.00-104.50
500-600	83.50-98.00
600-700	80.00-95.50
700-775	82.00-86.50

**SLAUGHTER COWS:**

Breaking and Boning (75-85% lean) 43.50-52.00, high dressing 48.00-56.50.

**REPLACEMENT COWS:**

Medium and Large 1-2, 2-7 yrs, 825-1685 lbs, 2nd and 3rd stage, 610.00-840.00 per head.

**SLAUGHTER BULLS:**

Y.G. 1-2, 1445-1870 lbs 56.25-59.25, high dressing 60.00-65.00.

**COW AND CALF PAIRS:**

Medium and Large 1-2, 2-7 yrs, 825-1350 lbs, 150-300 lb calves, 730.00-970.00 per pair.

**MISSOURI WEEKLY DIRECT  
SLAUGHTER CATTLE REPORT**

Weekly Receipts 1200, Week ago 200; Year ago 1200

Trade moderate, live sales and dressed sales on the grid basis steady. Demand and seller interest moderate.

**STEERS:**

Live sales: 40-50% Choice 1200 lbs 97.000-99.00.

**STEERS AND HEIFERS:**

Carcass sales:

**HEIFERS:**

Live sales: 40-50% Choice 1100 lbs 97.00-99.00.

**GRADE AND WEIGHT: (Grid)**

Choice 550-950 lbs 165.00  
Select 550-950 lbs 145.00-149.00

**INTERIOR MISSOURI DIRECT HOGS**

Weekly Receipts 9,385 Week ago 9,451 Year ago 11,101

Weekly Top: Friday 42.00

**BARROWS AND GILTS:**

Steady to 1.00 lower  
Base Carcass Meat Price 41.00-42.00

**SOWS:**

Steady  
300-500 lbs 24.00-27.00  
over 500 lbs 28.00-30.00

**MISSOURI WEEKLY DIRECT  
WEANER AND FEEDER PIG REPORT**

Receipts: 3121 [FOB 2415 Delivered 706] compared to last week, weaner pigs steady. Insufficient number of feeder pigs for a test. Light demand for light supply.

Early weaned pigs 10 lb base weights  
FOB the farm 34% negotiated  
2415 head 10 lbs. 27.00-33.00 weighted average 30.99

Early weaned pigs 10 lb base weights  
Delivered 0% Negotiated  
706 head 10 lbs 30.64-31.19 weighted average 30.97

Feeder pigs in all lot sizes:  
FOB the farm  
No sales

Feeder pigs in all lot sizes:  
Delivered  
No sales

**WEEKLY LIVESTOCK SLAUGHTER**

	CATTLE	HOGS	SHEEP
Week to date	548,000	1,888,000	50,000
Last Week	607,000	2,141,000	59,000
Last Year	623,000	1,816,000	57,000
2003 Yr to dt	32,146,000	90,305,000	2,587,000
2002 Yr to dt	32,407,000	90,371,000	2,829,000

**MIDWEST SHEEP REVIEW**

Slaughter Receipts:  
This week 50,000  
Week ago 59,000  
Year ago 57,000

Slaughter Lambs 2.00 lower  
Slaughter Ewes steady  
Feeder Lambs steady

SLAUGHTER EWES:  
Utility and Good 1-3, 35.00-45.00  
Cull 1, 25.00-35.00 (per cwt.)

SLAUGHTER LAMBS: Ch & Pr  
90-150 lbs; shorn 84.00-86.00,  
wooled 82.00-84.00.

FEEDER LAMBS:  
60-80 lbs 100.00-110.00, 80-100  
lbs 90.00-100.00 (per cwt.)

**MISSOURI WEEKLY HAY SUMMARY**

Winter temperatures arrived and seem to be staying now. A few snow flurries even fell in parts of the state this week. Demand for hay has dropped a bit this week most sellers are hopping it is due to the holiday week. The amount of mid to low quality hay and options of feed besides hay have sellers worried if the market will ever get hot this year or not. Even with the high cattle prices it has been difficult to hold a steady market to all hay besides some very high dairy hay and even that is beginning to slip, even though it is getting very difficult to find any to buy or sell. Some producers are now thinking that only if a very bad winter arrives will things get better this year and as much as they need to move hay not really wishing for that. Hay supply is moderate to heavy, demand moderate, and prices are steady. (All prices per ton unless specified and most reflect delivered price) Unless specified prices per ton and reflect delivered price. Supreme quality alfalfa 110.00-140.00. Premium quality alfalfa 80.00-110.00. Prairie hay 65.00-85.00, Good quality brome hay 60.00-100.00. Good quality timothy hay 3.00-3.50 per small square. Good large round bales mixed grass hay 15.00-25.00, Good red clover hay 50.00-75.00. Fair quality large round bales Fescue 10.00-20.00 per bale. Wheat straw 1.50-2.50 per small square.

**MIDWEST EGG REVIEW**

Prices on large steady, medium steady, small steady. IOWA-MINNESOTA-WISCONSIN: Prices paid to producers. (Cents per dozen) Large 1.00-1.04, Medium .78-.82, Small .43-.47.

**WHOLESALE FEEDSTUFFS PRICES  
(DOLLARS PER TON-BULK BASIS)**

Area	Soybean Meal 48% Solvent	Cottonseed Meal 41% Solvent	Meat Meal	Wheat Middlings
Kansas City	236.60	202.50	267.00	91.00
St. Louis	242.50	190.00	270.00	92.50
Memphis	236.90	172.50	----	78.00
Decatur	235.00	----	----	----

Weekly Average Prices as of Nov 25, 2003

**WEEKLY COMMODITY GRAIN FUTURES TRENDS**

Compared to last Friday: Soybeans .03 to .06 higher, Wheat .10 to .11 higher, Corn .07 to .12 higher, Soybean meal 2.00 lower to 8.80 higher, KC Wheat .10 to .21 higher. (all price trends approximate ranges).

**Daily Grain Futures Closes**

	Mon	Tues	Wed	Thur	Fri
Soybeans					
Jan	737 1/4	746	745 3/4	Holiday	756 1/4
Mar	734 3/4	741 1/2	743 3/4		754
May	720 1/4	720 1/2	725		738
Jul	706 1/2	707 1/4	710		722
Aug	678 1/2	678 1/4	684		694
Wheat					
Dec	379 1/2	388 1/4	386 1/2	Holiday	394 1/4
Mar	390 1/4	398 3/4	398 1/2		406 3/4
May	381	389 1/2	390		396 1/2
Jul	352 1/4	359 1/4	360 1/4		364 3/4
Sep	356 1/2	364	364 1/2		368
Corn					
Dec	234 3/4	239 1/2	242 1/2	Holiday	245
Mar	239 1/2	244 1/2	247 1/4		248 3/4
May	242 1/2	247 1/2	250 1/4		252
Jul	244 3/4	249 3/4	252		253
Sep	242 1/2	246	247 3/4		246 3/4
KC Wheat					
Dec	380	389 1/4	393 3/4	Holiday	405
Mar	385	393	392 3/4		401 3/4
May	378 1/2	386 1/2	386 1/2		396 1/2
Jul	356 3/4	365	365 1/2		372 1/2
Sep	362	367	367		372
SB Meal					
Dec	226.40	226.60	228.70	Holiday	228.40
Jan	225.10	225.60	227.20		227.90
Mar	224.80	224.60	225.80		227.90
May	220.40	219.70	221.20		223.90
Jul	215.80	214.80	216.50		218.70

**WEEKLY COMMODITY LIVE FUTURES TRENDS**

Compared to last Friday: Live Cattle 2.10 to 4.10 higher, Lean Hogs .10 to 1.13 higher, Pork Bellies 1.50 to 2.40 higher, Feeder Cattle 2.98 to 3.62 higher.

**Daily Live Futures Closes**

	Mon	Tues	Wed	Thur	Fri
Cattle					
Nov	100.55	100.90	101.30	Holiday	-----
Dec	96.27	96.97	98.47		99.25
Jan	93.90	94.25	95.50		95.90
Feb	91.45	91.80	92.75		93.17
Apr	82.62	83.05	83.65		83.92
Lean Hogs					
Dec	49.62	49.17	48.45	Holiday	49.95
Feb	53.55	53.07	53.20		55.20
Apr	57.12	56.95	56.65		58.27
May	60.62	60.25	60.30		60.97
Jun	63.82	63.82	63.62		64.65
Prk Bel					
Feb	84.75	86.45	86.32	Holiday	88.07
Mar	84.20	85.25	85.35		87.05
May	86.27	87.25	86.55		87.50
Jul	87.30	89.60	88.60		90.50
Aug	86.85	89.00	89.00		90.00
Fdr. Cat.					
Jan	96.92	97.75	101.30	Holiday	99.37
Mar	90.95	91.75	98.47		93.37
Apr	88.50	89.20	95.50		90.50
May	88.77	89.37	92.75		90.97
Aug	90.35	90.90	83.65		91.60

**Market News Hotline**  
**1-573-522-9244**

**December 01, 2003**

**MISSOURI GRAIN WEEKLY TRENDS**

Soybeans .08 to .24 lower  
 Wheat .07 to .16 lower  
 Corn unch to .04 lower  
 Grain Sorghum unch to .13 lower

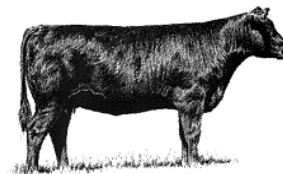
**Weekly Missouri Selected Cash Grain Bids**

Area	#1 Soybean	#2 Soft Wheat	#2 Corn	#2 Grain Sorghum
<b>Kansas City</b>				
Monday	7.27	3.75-3.80	2.38-2.40	4.46-4.55
Tuesday	7.36-7.38	3.84-3.89	2.45	4.64
Wednesday	7.36-7.38	3.89-3.94	2.47	4.68
Thursday	Holiday	-----	-----	-----
Friday	7.46-7.48	4.05	2.49	4.63-4.71
<b>St. Louis</b>				
Monday	7.52-7.53	4.05	2.51	4.96
Tuesday	7.62-7.64	4.17	2.57-2.61	5.04
Wednesday	7.62-7.64	4.15	2.55-2.59	5.00
Thursday	Holiday	-----	-----	-----
Friday	7.74	4.22	2.61	5.04
<b>Central</b>				
Monday	7.14	3.54-3.55	2.20	3.84
Tuesday	7.23	3.63	2.25	3.93
Wednesday	7.23	3.61-3.62	2.28	3.98
Thursday	Holiday	-----	-----	-----
Friday	7.32-7.33	3.69-3.72	2.30-2.31	4.02
<b>S.E. Mo.</b>				
Monday	7.46-7.48	3.96-4.05	2.43-2.46	4.83-5.05
Tuesday	7.57-7.58	4.05-4.16	2.47-2.50	4.91-5.02
Wednesday	7.58	4.03-4.16	2.50-2.53	4.96-5.07
Thursday	Holiday	-----	-----	-----
Friday	N/B	N/B	N/B	N/B

(PRICES PER BU. EXCEPT GR. SORG. PER CWT)  
 \* NEW CROP

The Weekly Market Summary is available to anyone for an \$18.00 annual subscription fee. To subscribe, send your check or money order to: Weekly Market Summary, Missouri Department of Agriculture, PO Box 630, Jefferson City, Missouri, 65102

**“Show-Me Select” Bred Heifer Sales**



**Saturday December 06, 2003 – 1:00 p.m.**

**Fruitland Livestock Auction - Fruitland, MO**

**Exit 105 off Interstate 55 – 3 miles N of Hwy 61**

Selling approximately 220 bred heifers, 97 percent black or BWF. Some Purebred Angus and Charolais and Angus, Simmental, Charolais, Shorthorn and Hereford crosses, sorted into uniform lots of breed, color, size, and calving dates.

**Saturday December 06, 2003 – 1:00 p.m.**

**Central Missouri Sales, Inc. – Sedalia, MO**

**65 Hwy Sedalia, MO**

Selling approximately 110 head of Angus, Angus cross, Polled Hereford, Gelbvieh, and Simmental cross Spring Calving Bred Heifers.

All heifers have met minimum standards for reproductive soundness, pelvic size, body condition, frame, muscle, and weight and are free of blemishes. Heifers have been bred to bulls meeting strict calving ease/birth weight EPD requirements. A strict immunization program has been followed. Many have been synchronized, AI, and will calve in a short time period.

**More Information Contact: Greg Onstott 573-690-7125**