

Weekly Market Summary

Published by
Missouri Department of Agriculture
Division of Market Information & Outreach
Market News Program



Peter W. Hofherr, Director
 Loyd Wilson, Division Director
 Mike Davis, Editor
<http://www.mda.mo.gov>
<http://www.ams.usda.gov/marketnews.htm>

Bob Holden, Governor

Volume XXIV, Number 17 ♦ P.O. Box 630, Jefferson City, MO 65102 ♦ (573) 751-4211 ♦ Friday, April 23, 2004

MISSOURI WEEKLY FEEDER CATTLE WEIGHTED AVERAGE REPORT

Receipts 25,562; Week ago 25,017; Year ago 23,343
 Medium and Large 1 (Medium Flesh)

Fdr. STEERS:		Fdr. HEIFERS:		Hols. STEERS	
361 lbs.	131.78	361 lbs.	117.88	347 lbs.	102.53
453 lbs.	124.09	451 lbs.	111.84	431 lbs.	97.17
542 lbs.	113.25	543 lbs.	105.35	536 lbs.	91.10
649 lbs.	105.13	643 lbs.	97.93	638 lbs.	84.81
743 lbs.	98.03	722 lbs.	94.89	746 lbs.	79.14
820 lbs.	95.10	821 lbs.	87.10	838 lbs.	77.17
936 lbs.	84.25				

SOUTHERN MISSOURI WEEKLY SUMMARY

(West Plains, Gainesville)

Receipts 3600; Week ago 3967; Year ago 2361
 Compared to last week steers and heifers under 700 lbs 2.00-5.00 higher, over 700 lbs 2.00-3.00 higher in very light test. Slaughter cows steady to 1.00 lower, Slaughter Bulls firm to 2.00 higher

STEERS:		HEIFERS:	
Medium and Large 1		Medium and Large 1	
300-400 lbs.	120.00-137.50	300-400 lbs.	114.00-123.00
400-450 lbs.	114.00-129.00	400-500 lbs.	104.00-118.00
450-500 lbs.	110.00-122.00	500-600 lbs.	99.50-109.00
500-550 lbs.	108.00-120.00	600-700 lbs.	91.00-100.00
550-600 lbs.	97.50-113.00	750-800 lbs.	
600-700 lbs.	97.00-110.00		
700-725 lbs.	95.00-105.00		
800-850 lbs.	Scarce		

Large 3 Holsteins
 300-400 lbs. Scarce

SLAUGHTER COWS: Breaking and Boning (70-85% lean) 49.00-55.00, high dressing 52.50-62.50. Lean (85-90%) 53.00-59.00, low dressing 42.00-47.00.

REPLACEMENT COWS: Medium and Large 1-2, 2 to 7 yrs, 950-1350 lbs. 3rd stage, 675.00-880.00, per head.

SLAUGHTER BULLS: Yield Grade 1-2, 1165-2235 lbs., 63.00-70.00, high dressing 70.00-77.00, low dressing 56.00-64.00.

COW & CALF PAIRS: Medium and Large 1-2, 3 to 7 yrs., 950-1300 lbs. baby to 350 lbs. calves 975.00-1230.00 per pair.

SOUTHWEST MISSOURI WEEKLY SUMMARY

(Joplin, Springfield)

Feeder Cattle Receipts 5697, Week ago 6716, Year ago 5267
 Cows and Bulls Receipts 1800; Week ago 1600; Year ago 950
 Dairy Cattle Receipts 2123; Norwood 04-08-2004

Compared to last week steers and heifers sold steady to 2.00 higher, Slaughter cows steady to 2.00 higher, Bulls 2.00-3.00 higher.

STEERS:		HEIFERS:	
Medium and Large 1		Medium and Large 1	
300-400 lbs.	119.50-134.50	300-400 lbs.	112.50-122.50
400-500 lbs.	116.50-127.00	400-500 lbs.	108.00-117.00
500-600 lbs.	104.50-116.00	500-600 lbs.	100.00-106.50
600-700 lbs.	94.00-103.50	600-700 lbs.	94.00-102.00
700-800 lbs.	94.75-102.00	700-800 lbs.	87.25-93.25
800-900 lbs.	90.75-95.60	800-900 lbs.	82.25-90.00
900-1000 lbs.	82.25		

HOLSTEINS:

Large Frame 3

300-400 lbs.	100.00-108.50
400-500 lbs.	93.00-103.00
500-600 lbs.	88.00-93.50
600-700 lbs.	83.50-88.50
700-800 lbs.	77.50-81.25
800-900 lbs.	71.50-77.75

REPLACEMENT COWS: Medium and Large 2, 2 yrs to ss, 2nd and 3rd stage, 710.00-925.00 per head.

COW & CALF PAIRS: Medium and Large 1-2, 2 yrs. to ss, 900-1200 lbs. baby to 450 lb calves, some rebred, 925.00-1275.00 per pair.

Dairy Cattle Sales

Springer Heifers: Supreme 1850.00-2450.00, Approved 1600.00-1875.00, Crossbred 1250.00-1575.00, Open Heifers; Approved 700-800 lbs 1225.00-1380.00, 600-700 lbs 925.00-1330.00, 500-600 lbs 975.00-1290.00, Bred Heifers 4-6 months Supreme 1760.00-2350.00. Baby Calves: Holstein Heifers 400.00-630.00, Bulls 120.00-200.00.

SLAUGHTER COWS: Breaking and Boning (70-85% lean) 53.00-59.00, high dressing 58.50-64.00. Lean (85-90%) 46.50-51.50.

SLAUGHTER BULLS: Yield Grade 1-2, 1325-2350 lbs., 66.00-73.75, high dressing 75.00-79.25.

INTERIOR MISSOURI DIRECT HOGS

Weekly Receipts 11,616; Week ago 11,215; Year ago 16,482

Compared to last weeks close barrows and gilts 2.00-3.00 higher.

BARROWS AND GILTS:

Base carcass meat prices 62.00-63.00.
 Weekly top price Friday 64.00

SOWS:

1.00 to 3.00 higher
 300-500 lbs 38.00-42.00
 Over 500 lbs 39.00-44.00.

The Weekly Market Summary is available to anyone for an \$18.00 annual subscription fee. To subscribe, send your check or money order to: Weekly Market Summary, Missouri Department of Agriculture, P.O. Box 630, Jefferson City, MO 65102.

WEST CENTRAL MISSOURI WEEKLY SUMMARY

(Kingsville and Sedalia)

Receipts 2725; Week ago 2198; Year ago 3108
 Compared to last week steers under 500 lbs firm to 6.00 higher, over 500 lbs and heifers firm to 7.00 higher. Slaughter cows uneven 2.00 higher to 2.00 lower, Slaughter bulls 2.00 higher.

FEEDER STEERS:

Medium and Large 1& 1-2

300-400 lbs.	125.00-140.00
400-500 lbs.	114.00-131.50
500-600 lbs.	107.50-120.00
600-700 lbs.	96.00-111.75
700-800 lbs.	93.85-110.50
800 lbs.	96.85

FEEDER HEIFERS:

Medium and Large 1 & 1-2

300-400 lbs.	113.50-124.00
400-500 lbs.	105.00-119.00
500-600 lbs.	96.00-109.75
600-650 lbs.	97.00-107.00
650-700 lbs.	91.00-98.50

REPLACEMENT COWS:

Medium and Large 1-2 2-5 yrs,
 1180-1340 lbs 2nd and 3rd stage
 905.00-930.00 per head.

SLAUGHTER COWS:

Breaking and Boning (70-85% lean) 48.25-55.00 high dressing 53.00-62.50.
 Lean (85-90%) 46.00-50.00, low dressing 37.50-43.00.

COW & CALF PAIRS:

Medium and Large 1-2, 2 yrs to ss 900-1300 lbs baby 500 lb calves 975.00-1250.00 per pair.

SLAUGHTER BULLS:

Yield Grade 1-2, 1255-2145 lbs. 60.75-66.25, high dressing 66.50-70.75, low dressing 55.75-57.00.

EAST CENTRAL MISSOURI WEEKLY SUMMARY

(Bowling Green, Kingdom City, and Boonville)

Receipts 4924; Week ago 5389; Year ago 3465
 Compared to last week steers and heifers unevenly steady. Slaughter cows steady to 3.00 higher.

FEEDER STEERS:

Medium and Large 1

300-400 lbs.	123.00-143.00
400-500 lbs.	114.00-135.00
500-600 lbs.	105.00-123.50
600-700 lbs.	99.00-112.00
700-775 lbs.	94.00-103.00
800-850 lbs.	87.00-96.00

FEEDER HEIFERS:

Medium and Large 1 & 1-2

300-400 lbs.	109.00-121.00
400-500 lbs.	103.00-123.00
500-600 lbs.	95.00-110.00
600-700 lbs.	88.00-105.00
700-750 lbs.	86.00-92.00

SLAUGHTER STEERS: Choice 2-3, 87.00-89.00.

SLAUGHTER COWS: Breaking, Boning, and Lean (70-90% lean) 47.00-57.00, high dressing 54.50-61.25, low dressing 40.00-50.00.

SLAUGHTER HEIFERS: Choice 2-3 86.00-90.00.

SLAUGHTER BULLS: Yield Grade 1-2, 1200-2300 lbs., 62.50-69.50, high dressing 69.50-71.50.

NORTHEAST MISSOURI WEEKLY SUMMARY

(Palmyra, New Cambria, and Green City)

Feeder Cattle Receipts 2642; Week ago 1702; Year ago 2290
 Slaughter Cattle Receipts 105; Week ago 39; Year ago 156
 Compared to last week steers and heifers under 600 lbs steady to 3.00 higher, over 600 lbs 3.00-6.00 higher. Slaughter cows 2.00-3.00

FEEDER STEERS:

Medium and Large 1

300-400 lbs.	129.50-142.00
400-500 lbs.	127.00-143.00
500-600 lbs.	108.75-126.00
600-700 lbs.	103.50-117.50
700-750 lbs.	101.50-109.50
808 lbs.	98.10

FEEDER HEIFERS:

Medium and Large 1 & 1-2

300-400 lbs.	113.00-128.00
400-500 lbs.	105.00-122.00
500-600 lbs.	102.00-114.00
600-700 lbs.	104.50-111.00
700-800 lbs.	91.75-103.80

SLAUGHTER STEERS: Choice 2-3, 1100-1400 lbs., 88.00-90.50.

SLAUGHTER COWS: Breaking and Boning (70-85% lean) 52.00-59.00, Lean (85-90%) 46.25-52.00.

SLAUGHTER HEIFERS: Choice 2-3, 1000-1300 lbs., 87.00-90.00.

SLAUGHTER BULLS: Yield Grade 1-2, 1400-2250 lbs. 87.00-90.00.

SOUTHEAST MISSOURI WEEKLY SUMMARY

(Patton Junction and Fruitland)

Receipts 1375; Week ago 1283; Year ago 910
 Compared to last week steers and heifers steady to 2.00 higher.
 Slaughter Cows and Bulls 2.00 to 3.00 higher.

FEEDER STEERS:

Medium and Large 1-2

200-300 lbs	126.00-165.00
300-400 lbs.	115.00-131.00
400-500 lbs.	109.00-121.00
500-600 lbs.	95.50-112.00
600-700 lbs.	90.00-99.50
700-775 lbs.	90.00-96.25
800-850 lbs.	83.00-90.50

FEEDER HEIFERS:

Medium and Large 1-2

200-300 lbs.	110.00-123.00
300-400 lbs.	108.00-120.00
400-500 lbs.	101.00-113.00
500-600 lbs.	93.50-103.00
600-700 lbs.	84.75-96.50
700-800 lbs.	77.50-87.25
800-875 lbs.	77.00-80.25

REPLACEMENT COWS:

Medium and Large 1-2, 2-7 yrs 920-1360 lbs in 2nd and 3rd stage pregnancy 670.00-860.00 per head.

SLAUGHTER COWS:

Breaking and Boning (70-85% lean) 48.50-53.00, high dressing 54.00-56.50, Lean (85-90%) 38.00-42.00, low dressing 32.00-35.00.

COW & CALF PAIRS:

Medium and Large 1-2, 2-7 yrs, 845-1415 lbs with 150-250 lbs calves 875.00-1030.00 per pair.

SLAUGHTER BULLS:

Yield Grade 1-2, 1240-2030 lbs 63.50-66.75, high dressing 66.25-73.00, low dressing 53.00-57.50.

SOUTH CENTRAL MISSOURI WEEKLY SUMMARY

(Cuba and Vienna)

Receipts 2991; Week ago 2914; Year ago 2265
 Compared to last week steers and heifers steady to 3.00 higher.
 Slaughter Cows steady.

FEEDER STEERS:

Medium and Large 1

300-400 lbs.	127.50-140.00
400-500 lbs.	117.00-132.00
500-600 lbs.	107.50-123.00
600-650 lbs.	102.50-110.00
700-800 lbs.	Scarce
800-900 lbs.	Scarce

FEEDER HEIFERS:

Medium and Large 1 & 1-2

300-400 lbs.	116.00-123.00
400-500 lbs.	105.00-117.00
500-600 lbs.	99.00-112.00
600-660 lbs.	92.00-102.00

REPLACEMENT COWS:

Few Medium and Large 1-2 3 to 5 yrs 1100-1300 lbs first to third stage 815.00-880.00 per head

SLAUGHTER COWS:

Breaking and Boning (70-85% lean) 51.00-56.50 high dressing 55.50-61.00. Lean (85-90%) 47.00-54.00, low dressing 41.00-47.00.

COW & CALF PAIRS:

Medium and Large 1-2, package thin Charolais 3 to 7 yrs 950-1000 lbs with baby Charolais calves 850.00 per pair.

SLAUGHTER BULLS:

Yield Grade 1-2, 1400-2300 lbs 62.00-68.00, high dressing 71.25, low dressing 60.00-61.00.

**MISSOURI WEEKLY DIRECT
SLAUGHTER CATTLE REPORT**

Weekly Receipts 1600; Week ago 600; Year ago 2000
 Trade turning moderate to active mid-week. Live sales 1.00 lower and dress sales on a grid basis 1.00-4.00 lower.

STEERS:

Live sales: 50 percent Choice 1150-1200 lbs 84.00-85.00.

STEERS AND HEIFERS:

Carcass sales: Heifers 2 loads 60-70 % Choice 1050 lbs. 137.00.

HEIFERS:

Live Sales: No Sales

GRADE AND WEIGHT (Grid):

Choice 550-950 lbs 138.00-147.00
 Select 550-950 lbs 125.00-130.00.

**MISSOURI WEEKLY DIRECT
WEANER AND FEEDER PIG REPORT**

Receipts: 14,532 (FOB 5,146; Delivered 7,420) Compared to last week, weaner pigs 1.00 higher, feeder pigs 1.00 to 2.00 higher. Moderate demand for moderate supply.

Early weaned pigs 10 lb base weights
Fob the farm 12.2% negotiated
4631 head 10 lbs 26.00-33.00 weighted average price 31.07

Early weaned pigs 10 lb base weights
Delivered 100% negotiated
7420 head 10 lbs 31.63

Feeder pigs in all lot sizes
Delivered 0% negotiated (5650, Delivered Ark to Ill and Neb)
515 40-50 lbs 47.00-49.75, weighted average 43.8 lbs 48.04

Feeder pigs in all lot sizes
FOB the farm 0% negotiated
350 head 40-50 lbs 51.73-54.84, weighted average 45.9 lbs 53.35

WEEKLY LIVESTOCK SLAUGHTER

	<u>CATTLE</u>	<u>HOGS</u>	<u>SHEEP</u>
Week to date	636,000	1,947,000	48,000
Last week	591,000	1,978,000	45,000
Last Year	670,000	1,860,000	57,000
2004 yr. to date	9,755,000	32,033,000	897,000
2003 yr. to date	10,712,000	31,463,000	941,000

MIDWEST SHEEP REVIEW

Slaughter Receipts

This week 48,000; Week ago 45,000; Year ago 57,000

Slaughter Lambs steady
Slaughter Ewes steady to 5.00 higher.
Feeder Lambs steady

Slaughter Ewes: Utility and Good 1-3 35.00-40.00, Cull 1 25.00-35.00

Slaughter Lambs: Choice and Prime 2-3 90-150 lbs shorn 93.00-95.00, woolled 90.00-92.00

Feeder Lambs: Medium and Large 1-2 60-80 lbs 105.00-120.00, 80-100 lbs 95.00-105.00.

WEEKLY HAY SUMMARY

Spotty showers and some hard rain fell in many areas of the state this week. The rains made many farmers sleep a little easier; those in need of rain and some framers in southern Missouri that had yet to completely stop feeding hay due to very dry conditions hampering grass growth. A lot of talk at the coffee shops about what prices will be on new crop hay, but so far things are up in the air as the market has yet to be tested. Hay supply is moderate; demand is light and hay prices are steady. The Missouri Department of Agriculture has a hay hotline available for both buyers and sellers. To be listed, or for a directory, call 1-800-877-4HAY(4429). (All prices per ton unless specified and most reflect delivered price) Supreme quality alfalfa (RFV>185) 110.00-140.00, Premium alfalfa (RFV170-180) 80.00-110.00, Fair to Good alfalfa (RFV130-170) Round bales 40.00-70.00, Small and Big squares 70.00-100.00, Fair to good quality prairie hay 60.00-85.00, Good quality brome 50.00-85.00, Good quality timothy hay 3.00-3.50 per small square bale, Good quality red clover hay 40.00-70.00, Good quality mixed grass hay 12.00-25.00 per round bale, Fair quality large round bales fescue 10.00-20.00 per bale. Fair quality large round bales fescue 10.00-20.00 per bale. Wheat hay 50.00-60.00. Wheat straw 1.50-2.50 per small square bale.

MIDWEST EGG REVIEW

Prices on large .08 steady, medium steady, small steady. IOWA-MINNESOTA-WISCONSIN: Prices paid to producers. (cents per dz.) Large .52-.59, Medium .43-.47, Small .31-.33

**WHOLESALE FEEDSTUFFS PRICES
(DOLLARS PER TON-BULK BASIS)**

Area	Soybean Meal 48% Solvent	Cottonseed Meal 41% Solvent	Meat Meal	Wheat Middlings
Kansas City	292.30	244.50	270.00	75.50
St. Louis	322.50	239.50	272.50	90.00

By-Product Feed Prices

Soy Hulls Mexico, MO 80.00, Alfalfa Pellets 17% St Louis, MO 135.00, Distillers Grain dried Macon MO 139.00, corn Gluten Feed pelleted, Decatur, Il 93.00, Brewers Grain pressed 70% moisture, St Louis, MO 46.00. Prices per ton.

WEEKLY COMMODITY GRAIN FUTURES TRENDS

Compared to last Friday: Soybeans nearbys .02 to .05 lower, others .06 to .07 higher, Wheat .13 to .18 lower, Corn .06 to .12 lower, KC Wheat .10 to .15, Soybean Meal 3.80 lower to 4.10 higher. (all price trends approximate ranges).

Daily Grain Futures Closes

	Mon.	Tues.	Wed.	Thurs.	Fri.
Soybeans					
May	969	952 3/4	935	947	967
Jul	965 1/2	949	933 1/2	940	961
Aug	908 1/2	893	877 1/2	886 1/4	905 1/2
Sept	794 1/4	789 1/2	774	785 1/4	794 1/2
Nov	735 1/4	734	721	734 1/2	739 3/4
Wheat					
May	394	397	385	379	373
Jul	402 1/4	406	393 1/4	387	382 3/4
Sept	406 1/4	411 1/2	399	394 1/4	386
Dec	416	420	407 1/2	402 3/4	397 1/2
Mar	421	424 1/2	412 1/2	406 1/2	403
Corn					
May	311 1/4	309 1/4	304	304	303 1/2
Jul	317 3/4	315	308 3/4	309 3/4	309 3/4
Sept	313 1/2	311	305 1/2	307	307 1/4
Dec	310 1/4	307 1/2	302	304 1/2	305 1/2
Mar	313	311	304 3/4	307 1/4	308 1/4
KC Wheat					
May	403 1/4	406	396	391 3/4	385 1/2
Jul	409 3/4	412 3/4	402	396 1/2	390 1/4
Sept	413	417 1/2	406	402	396
Dec	421 1/2	424 3/4	413 3/4	409 1/2	404
Mar	426	425	417	413	409
SB Meal					
May	304.00	297.30	294.50	299.10	303.40
Jul	302.30	295.70	292.50	296.70	301.50
Aug	290.70	284.30	280.00	283.90	287.40
Sept	268.20	265.30	261.80	265.20	267.00
Oct	233.70	234.50	231.50	236.30	236.60

WEEKLY COMMODITY FUTURES TRENDS

Compared to last Friday: Live Cattle .40 to 1.50 higher, Lean Hogs .92 to 2.88 higher, Pork Bellies steady to 4.55 higher, Feeder Cattle 1.95 to 4.38 higher.

Daily Futures Closes

	Mon.	Tues.	Wed.	Thurs.	Fri.
Cattle					
Apr	82.20	83.17	82.35	82.00	82.82
Jun	76.22	77.92	76.92	75.67	76.47
Aug	78.07	79.12	78.25	78.05	78.65
Oct	79.52	80.02	79.05	78.92	79.35
Dec	80.27	80.75	80.00	79.95	80.40
Lean Hogs					
May	68.90	68.65	69.42	70.72	71.30
Jun	70.67	70.60	70.62	71.70	71.72
Jul	69.80	70.10	70.30	71.40	72.00
Aug	68.25	68.22	68.25	69.10	69.65
Oct	58.37	57.85	57.82	58.25	58.77
Prk Bel					
May	104.62	105.95	106.75	106.52	107.00
Jul	105.00	106.62	106.80	106.82	106.85
Aug	99.10	101.40	101.45	100.75	101.70
Feb	87.50	87.50	87.80	87.80	87.80
Mar	86.35	86.35	86.35	86.35	86.35
Fdr Cat					
Apr	93.82	94.32	94.50	94.62	94.90
May	91.42	92.72	92.15	91.95	92.82
Aug	92.32	94.22	93.77	93.62	94.60
Sep	91.20	92.90	92.40	92.07	92.85
Oct	91.00	92.90	92.20	91.75	92.75
Milk					
Apr	19.61	19.63	19.64	19.65	19.61
May	19.87	19.90	19.74	19.77	19.80
Jun	18.80	18.75	18.33	17.84	17.67

WEEKLY MARKET SUMMARY
 (USPS 597250)
 To be published weekly by the
 Missouri Department of Agriculture
 1616 Missouri Blvd.
 Jefferson City, MO 65109

Postmaster: Send address changes to:
 Missouri Department of Agriculture
 P.O. Box 630
 Jefferson City, MO 65102

Periodicals postage paid at
 Jefferson City, Missouri

Market News Hotline
1-573-522-9244

April 23, 2004

MISSOURI GRAIN WEEKLY TRENDS

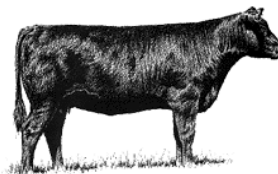
Soybeans .02 to .07 higher
 Wheat .12 to .14 lower
 Corn .01 to .13 lower
 Grain Sorghum .09 to .20 lower

Weekly Missouri Selected Cash Grain Bids

Area	#1 Soybean	#2 Soft Wheat	#2 Corn	#2 Grain Sorghum
Kansas City				
Monday	9.71	4.13	3.00-3.02	5.29
Tuesday	9.52	4.16	2.98-3.00	5.25
Wednesday	9.44	4.07	2.93-2.95	5.16
Thursday	9.52	4.02	2.93-2.95	5.16
Friday	9.73	3.96	2.93-2.95	5.16
St. Louis				
Monday	9.73-9.80	4.05	3.18-3.19	5.39
Tuesday	9.58-9.62	4.04	3.15-3.18	5.41
Wednesday	9.40-9.45	3.94	3.11-3.12	5.34
Thursday	9.55	3.90	3.12	5.37
Friday	9.74-9.75	3.84	3.12	5.35
Central				
Monday	9.50-9.59	3.59-3.70	2.95	4.73
Tuesday	9.34-9.42	3.62-3.73	2.93	4.70
Wednesday	9.16-9.27	3.50-3.61	2.88	4.61
Thursday	9.28-9.34	3.44-3.55	2.88-2.89	4.61
Friday	9.48-9.55	3.38-3.49	2.87-2.89	4.63
S.E. MO				
Monday	9.68-9.69	3.95-4.02	3.10	5.17-5.19
Tuesday	9.52-9.53	3.98-4.09	3.07-3.09	5.07-5.16
Wednesday	9.34	3.87-3.94	3.03-3.04	4.98-5.07
Thursday	9.46	3.81-3.86	3.01-3.04	4.98-5.07
Friday	9.66-9.66	3.75-3.78	3.02-3.03	4.96-5.07

(PRICES PER BU. EXCEPT GR. SORG. PER CWT)
 *NEW CROP

“Show-Me Select” Bred Heifer Sales



Heifers have met minimum standards for reproductive soundness, pelvic size, body condition, frame, muscle and weight and are free of blemishes. Heifers have been bred to bulls meeting strict calving ease/birth weight EPD requirements. A strict immunization program has been followed including official Brucellosis calfhood vaccination a negative test prior to the sale. Heifers will calve from September 1 to November 25. Many have been synchronized and will calve in a short time period.

Saturday May 01, 2004 – 1:00 p.m.
Fruitland Livestock Auction - Fruitland, MO
Exit 105 off Interstate 55 – 3 miles N of Hwy 61

Selling approximately 260 bred heifers, 97 percent black or BWF. Some Purebred Angus, Registered Angus, Registered Simmental, and Angus, Charolais and Hereford crosses sorted into uniform lots of breed, color, size, and calving dates. **Sale feature**-27 sexed Embryos sorted into 4 lots of bull calves and 3 lots of heifer calves.

More Information Contact: Greg Onstott 573-690-7125
Or 573-751-7766