

Weekly Market Summary

Published by:
Missouri Department of Agriculture
Ag Business Development Division
Market News Program



Chris Chinn, Director
 Ken Struempf, Division Director
 Tony Hancock, Editor
 agmarketnews.mo.gov
 http://www.ams.usda.gov/

Eric R. Greitens, Governor

Volume XXXVII, Number 6 ♦ P.O. Box 630, Jefferson City, MO 65102 ♦ (573) 751-4211 ♦ Friday February 10, 2017

MISSOURI WEEKLY FEEDER CATTLE WEIGHTED AVERAGE REPORT

Receipts: 26,432 Week ago: 40,692 Year ago: 27,546
 Steers and Heifers Medium and Large 1 Hols. Large 3

<u>Fdr. STEERS:</u>		<u>Fdr. HEIFERS:</u>		<u>Hols. STEERS</u>	
360 lbs.	170.27	370 lbs.	143.02	474 lbs.	77.66
460 lbs.	165.01	457 lbs.	140.83	541 lbs.	74.85
555 lbs.	153.81	553 lbs.	133.32	637 lbs.	66.02
651 lbs.	140.02	648 lbs.	126.03	770 lbs.	65.19
745 lbs.	129.88	736 lbs.	120.88	857 lbs.	65.83
844 lbs.	123.46	825 lbs.	117.58	969 lbs.	63.85
935 lbs.	120.37	932 lbs.	113.46		

SOUTHERN MISSOURI WEEKLY SUMMARY (West Plains, Ava)

Receipts: 5359 Weeks ago: 6062 Year ago: 4079
 Compared to last week, feeders sold steady to 5.00 higher. Slaughter cows and bulls steady to 2.00 lower.

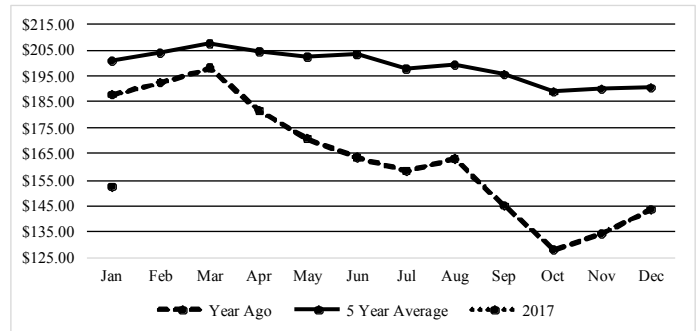
<u>STEERS:</u>		<u>HEIFERS:</u>	
Medium and Large 1		Medium and Large 1	
300-400 lbs.	166.00-182.50	300-400 lbs.	138.00-157.00
400-500 lbs.	153.00-167.00	400-500 lbs.	128.00-147.00
500-600 lbs.	139.00-160.00	500-600 lbs.	122.00-134.00
600-700 lbs.	130.00-146.50	600-700 lbs.	122.00-125.00
700-800 lbs.	120.00-138.00	700-750 lbs.	120.00-121.00
800-900 lbs.	119.50-124.75		

<u>Holsteins:</u>		<u>SLAUGHTER COWS:</u>	
Large 3		Breaking and Boning (70-85% lean) 53.50-63.00, high dressing 58.00-66.00. Lean (85-90%) 46.00-57.50	
Pkg 460 lbs.	75.00		
Pkg 636 lbs.	63.00		
Pkg 787 lbs.	65.00		

SLAUGHTER BULLS: Yield Grade 1-2 1100-2250 lbs. 81.00-89.00, high dressing 89.00-96.00

COW & CALF PAIRS: Medium and Large 1 2-4 yrs, 985-1190 lbs, with 100-200 lb calves 1600.00-1800.00. Medium and Large 1-2 4-5 yrs 955-1225 lbs with 100-400 lb calves 1200.00-1525.00 per pair.

Historical Feeder Steers Medium and Large 1 500-600 lbs. Weighted Average



Year Ago Slaughter Steers and Heifers:

Northeast Missouri: Steers: Choice 2-3 1400-1500 lbs 130.00-131.50.
 Heifers: Choice 2-3 1150-1350 lbs 126.75-130.75
 East Central Missouri: few Choice 3 127.00-131.00

SOUTHWEST MISSOURI WEEKLY SUMMARY (Joplin and Springfield)

Feeder Cattle Receipts: 6849 Week ago: 9131 Year ago: 5457
 Cow and Bull Receipts: 1141 Week ago: 1278 Year ago: 801
 Compared to last week, steers and heifers steady to 5.00 higher, except mid-weight steers and heifers 5.00 to 15.00 higher. Slaughter cows and bulls steady to 2.00 lower.

<u>STEERS:</u>		<u>HEIFERS:</u>	
Medium and Large 1		Medium and Large 1	
400-500 lbs.	161.00-176.50	300-400 lbs.	139.00-159.00
500-600 lbs.	134.00-170.00	400-500 lbs.	134.00-156.50
600-700 lbs.	125.00-148.00	500-600 lbs.	122.00-151.00
700-800 lbs.	119.00-138.00	600-700 lbs.	120.00-133.00
800-900 lbs.	120.00-127.00	700-800 lbs.	115.00-120.50
Lot 925 lbs.	121.75	800-850 lbs.	116.50-116.75

<u>HOLSTEINS:</u>		<u>SLAUGHTER COWS:</u>	
Large 3		Breaking and Boning (70-85% lean) 54.00-62.00, high dressing 57.50-69.00. Lean (85-90%) 46.00-56.00	
Pkg 398 lbs.	85.00		
450-500 lbs.	78.00-81.00		
500-600 lbs.	74.00-76.00		
600-700 lbs.	65.00-71.00		
750-800 lbs.	63.50-68.00		
800-900 lbs.	65.00-66.50		
Lot 971 lbs.	65.00		

REPLACEMENT COWS: Medium and Large 1 2-5 yrs 3rd stage 1090-1350 lbs 1525.00-1675.00 per head. Medium and Large 1-2 2-7 yrs 2nd to 3rd stage 900-1360 lbs 1050.00-1585.00 per head

COW & CALF PAIRS: Medium and Large 1-2 2-6 yrs 950-1295 lbs with 260-360 lb calves several rebred 1850.00-2000.00; short solid to aged cows 1150-1360 lbs with 180-270 lb calves few rebred 1150.00-1400.00 per pair

The Weekly Market Summary is available to anyone for a \$25.00 annual subscription fee. To subscribe, send your check or money order to: Weekly Market Summary, Missouri Department of Agriculture, P.O. Box 630, Jefferson City, MO 65102.

WEST CENTRAL MISSOURI WEEKLY SUMMARY

(Sedalia, Kingsville, Butler)

Receipts: 4925 Week Ago: 4973 Year ago: 4959

Compared to last week, feeders steady to 5.00 higher. Slaughter cows 2.00 lower to 1.00 higher,

FEEDER STEERS:
Medium and Large 1400-500 lbs. 156.50-176.25
500-600 lbs. 142.00-170.50
600-700 lbs. 127.50-151.25
700-800 lbs. 121.75-139.00
800-900 lbs. 118.75-128.50FEEDER HEIFERS:
Medium and Large 1400-500 lbs. 135.50-160.00
500-600 lbs. 124.00-149.75
600-700 lbs. 117.50-134.50
700-800 lbs. 114.00-125.00
800-900 lbs. 113.00-120.60SLAUGHTER BULLS: Yield
Grade 1-2 1335-2180 lbs 77.50-
85.00, high dressing 87.00, low
dressing 72.00-77.50SLAUGHTER COWS: Breaking
and Boning (70-85% lean)
53.00-61.00. Lean (85-90%)
49.00-56.00COW & CALF PAIRS: ScarceREPLACEMENT COWS:
Medium and Large 1-2 2 yrs to
short solid 985-1325 lbs 2nd to
3rd stage 925.00-1365.00 per
head**EAST CENTRAL MISSOURI WEEKLY SUMMARY**

(Bowling Green, Kingdom City, Macon, Boonville)

Receipts: 4029 Week ago: 7122 Year ago: 4318

Compared to last week, feeder calves under 700 lbs mostly steady; yearling steers over 750 lbs 3.00 lower; heifers over 700 lbs steady. Slaughter cows steady to firm.

FEEDER STEERS:
Medium and Large 1400-500 lbs. 164.00-175.00
500-600 lbs. 146.00-171.00
600-700 lbs. 131.00-151.50
700-800 lbs. 123.50-139.75
800-900 lbs. 125.00-127.50FEEDER HEIFERS:
Medium and Large 1300-400 lbs. 141.00-156.00
400-500 lbs. 140.00-157.00
500-600 lbs. 124.00-148.50
600-700 lbs. 122.00-133.50
700-800 lbs. 115.00-126.25SLAUGHTER STEERS and
HEIFERS: High Choice 2-3
1250-1550 lbs 117.00-119.50;
Select and Choice 2-3 1050-1450
lbs 104.00-115.50SLAUGHTER COWS: Breaking
and Boning, (70-85% lean) Average
dressing 55.00-62.50, high
dressing 61.00-67.00, Lean (85-
90%) 50.00-58.00REPLACEMENT COWS: ScarceSLAUGHTER BULLS: Yield
Grade 1-2 1250-1550 lbs 75.00-
86.50, high dressing 87.00-93.00**NORTHEAST MISSOURI WEEKLY SUMMARY**

(Palmyra, Unionville, Green City, New Cambria)

Feeder Cattle Receipts: 1465 Week ago: 6589 Year ago: 4570

Slaughter Cattle Receipts: 14 Week ago: 12 Year ago: 6

Compared to last week, steers under 650 lbs steady to 3.00 lower, over 650 lbs 3.00 to 7.00 lower. Heifers under 600 lbs 2.00 to 4.00 lower, over 600 lbs 2.00 to 4.00 higher on light test. Slaughter steers and heifers steady.

FEEDER STEERS:
Medium and Large 1Pkg 495 lbs. 162.50
500-600 lbs. 154.50-161.75
600-700 lbs. 139.85-152.00
700-800 lbs. 129.00-136.75
800-900 lbs. 121.00-125.60FEEDER HEIFERS:
Medium and Large 1400-500 lbs. 135.00-141.00
500-600 lbs. 130.00-140.25
600-700 lbs. 124.75-130.25
700-800 lbs. 120.00-123.85
Lot 802 lbs. 116.75SLAUGHTER STEERS:
Choice 2-3 pkg 1355 lbs 120.50SLAUGHTER COWS: Breaking
and Boning (75-85% lean) 55.00-
62.00, high dressing 60.00-64.00;
Lean (85-90%) 44.00-53.00SLAUGHTER HEIFERS:
Choice 2-3 pkg 1348 lbs 121.00SLAUGHTER BULLS: Yield
Grade 1-2 few 1500-2000 lbs
80.50-85.00COW & CALF PAIRS: ScarceREPLACEMENT COWS: Me-
dium and Large 1-2 2 yrs 1050-
1175 lbs 3rd stage 1510.00-
1575.00 per head**SOUTHEAST MISSOURI WEEKLY SUMMARY**

(Farmington, Patton)

Receipts: 2033 Week ago: 2399 Year ago: 1917

Compared to a week ago, steers and heifers 1.00 to 11.00 higher. Slaughter cows steady. Slaughter bulls 1.00 higher.

FEEDER STEERS:
Medium and Large 1300-400 lbs. 150.00-177.00
400-500 lbs. 145.00-175.00
500-600 lbs. 124.00-164.50
600-700 lbs. 117.00-139.50
700-800 lbs. 116.00-127.50FEEDER HEIFERS:
Medium and Large 1300-400 lbs. 125.00-142.00
400-500 lbs. 118.00-141.00
500-550 lbs. 115.00-138.00
600-700 lbs. 110.00-128.00
700-800 lbs. 114.00-125.00REPLACEMENT COWS: Medium
and Large 1-2 4 yrs to short solid
930-1590 lbs 2nd to 3rd stage
790.00-1510.00 per headSLAUGHTER COWS: Breaking
and Boning (75-85% lean) 48.00
-57.50, Lean (85-90% lean)
40.50-57.50COW & CALF PAIRS: Medium
and Large 1-2 4-7 yrs 890-1158 lbs
with 180-350 calves 1310.00-
1410.00 per pairSLAUGHTER BULLS: Yield
Grade 1-2 few 1285-2335 lbs
72.50-78.50, high dressing 79.50
-92.50**SOUTH CENTRAL MISSOURI WEEKLY SUMMARY**

(Cuba, Vienna)

Receipts: 1506 Week ago: 1583 Year ago: 1777

Compared to last week, feeders steady to 8.00 higher, with the advance under 650 lbs. Slaughter cows steady.

FEEDER STEERS:
Medium and Large 1 & 1-2300-400 lbs. 168.00-191.00
400-500 lbs. 164.00-169.50
500-600 lbs. 138.50-166.00
600-700 lbs. 131.00-151.00
700-800 lbs. 122.50-133.00FEEDER HEIFERS:
Medium and Large 1 & 1-2Pkg 307 lbs. 157.00
400-500 lbs. 136.00-146.00
500-600 lbs. 131.00-144.50
600-700 lbs. 122.00-127.50
700-750 lbs. 118.00-122.00REPLACEMENT COWS: Medium
and Large 1-2 few 5-8 yrs 1150-1450
lbs 2nd to 3rd stage 1175.00-1600.00
per headSLAUGHTER COWS: Break-
ing and Boning (70-85% lean)
53.00-60.00, high dressing 60.00
-64.00. Lean (85-90%) 50.00-
55.00COW & CALF PAIRS: Medium and
Large 1 few 5-9 yrs 1150-1275 lbs
some bred 1st stage with 300-425 lb
calves 1650.00-2100.00 per pairSLAUGHTER BULLS: Yield
Grade 1-2 1400-2200 lbs 77.50-
88.50, high 91.00, low dressing
69.00-73.00**NORTHWEST MISSOURI WEEKLY SUMMARY**

(St Joseph)

Receipts: 2381 Weeks ago: 3823 Year ago: 3832

Compared to last week, feeder calves 5.00 to 8.00 higher, except 550-650 lb heifers 10.00 to 12.00 higher. Heavier steers and heifers lightly tested. Slaughter cows and bulls steady.

FEEDER STEERS:
Medium and Large 1400-500 lbs. 153.00-172.00
500-600 lbs. 141.00-166.00
600-700 lbs. 131.00-151.00
700-800 lbs. 124.00-138.50
800-900 lbs. 121.00-130.00FEEDER HEIFERS:
Medium and Large 1400-500 lbs. 134.00-144.75
500-600 lbs. 126.50-146.00
600-700 lbs. 124.00-147.00
700-800 lbs. 119.00-125.00
800-900 lbs. 114.00-119.00SLAUGHTER BULLS:
Yield grade 1-2 1350-2360 lbs
70.00-78.50, high dressing 82.00SLAUGHTER COWS:
Breaking and Boning (70-85% lean)
52.00-63.50, high dressing 64.00-
67.00. Lean (85-90%) 48.00-55.00BRED COWS: Medium and
Large 1-2 few 3-4 yrs 860-1155
lbs 3rd stage 1060.00-1300.00
per headCOW-CALF PAIRS: Medium and
Large 1-2 few short solid 1300-
1400 lbs with 100-200 lb calves
1075.00-1200.00 per pair

**MISSOURI WEEKLY DIRECT
WEANER AND FEEDER PIG REPORT**

Receipts: 6593 Weaner pigs steady to firm. Feeder pigs no sales reported. Prices per head. Early weaned pigs 10 lb. base weights FOB the farm 0% negotiated, 3920 head, 10 lbs, 38.00-43.09, weighted average 41.34. Early weaned pigs 10 lbs base weights delivered 67% negotiated, 2673 head, 10 lbs 42.27-57.00, weighted average 52.19.

**WHOLESALE FEEDSTUFFS PRICES
(DOLLARS PER TON-BULK BASIS)**

Area	Soybean Meal 48% Solvent	Cottonseed Meal 41% Solvent	Meat Meal	Wheat Middlings
Kansas City	319.70	275.00	290.00	110.00
St. Louis	342.00	270.00	285.00	105.00

**MISSOURI WEEKLY DIRECT
SLAUGHTER CATTLE REPORT**

Weekly Receipts: 280 Week ago: 120 Year ago: 160
Trading from last week through Friday morning remains light as bids are steady to 1.00 higher on dressed sales.

LIVE STEERS & HEIFERS: DRESSED STEERS & HEIFERS:
No sales reported No sales reported

GRADE AND WEIGHT (Grid):
Over 80% Choice 4 loads 192.00,
3 loads 194.00

By-Product Feed Prices

Alfalfa Pellets, St. Louis MO 235.00; Corn Gluten Feed pelleted, Butler, MO FOB out; Distillers Grain Dried, FOB Carrollton, MO 100.00; Soy Hulls Mexico, MO N/A. Prices per ton.

Norwood, MO – Producers Auction Yards

Special Dairy Heifer Sale Report for 02/09/2017

Receipts: 234 Last Month Special: 265 Year Ago: 278
Springer Heifers Bred Seven to Nine Months: Supreme 1350.00-1475.00, Jerseys 1260.00-1350.00. Approved 1050.00-1300.00, Crossbreds 985.00-1085.00, Individual Jersey 900.00. Medium 900.00-1000.00. Heifers Bred Four to Six Months: Approved Individual 1185.00. Medium 775.00-900.00, Individual Crossbred 700.00. Heifers Bred One to Three Month: Approved Crossbreds 875.00-920.00, Individual Jersey 875.00. Medium Pair Crossbreds 775.00. Open heifers: Approved Pkg 11 hd 280 lbs 490.00; 312-380 lbs 500.00-680.00; 500-570 lbs 660.00-690.00; 712-770 lbs 725.00-800.00. Fresh Heifers and Cows: Approved Individual 1450.00. Medium 900.00-1100.00, Individual Crossbred 1025.00. Bred and Springer Cows: Approved Individual 1175.00. Baby Calves: Holstein Heifers Individual 150.00. Holstein Bulls Large 140.00-180.00, Small 105.00-125.00. Jersey Heifers Individual 135.00. Jersey Bulls 55.00-115.00. Crossbred Heifers Individual 180.00. Crossbred Bulls 95.00-175.00. Beef Cross Heifers 160.00-210.00. Beef Cross Bulls 160.00-210.00

Montgomery County Livestock Auction

Sheep and Goat Auction for 02/09/2017

Receipts: 200 Last Month: 245

SHEEP: 160 head (prices per hundred weight) Slaughter Lambs: Choice and few Prime 2-3 Non-traditional few 70-80 lbs 230.00-235.00; Hair lambs 70-80 lbs 185.00-195.00; 60-68 lbs 200.00-215.00; few 50-59 lbs 205.00-220.00. Slaughter Ewes: Utility 1-2 120-225 lbs few 81.00-85.00; Good 2-3 120-200 lbs 61.00-71.00, pkg 270 lbs 56.00. Replacement Ewes: 2 yrs to solid mouth 105-150 lbs with single and twin lambs 200.00-285.00 per family, lot 3 yrs with twins 300.00 per family. Bred Ewes: 2 yrs to solid mouth 105-150 lbs 180.00-220.00 per head. Feeder Lambs: Medium and Large 1-2 pkg 65 lbs fancy ewes 255.00 cwt; pkg 42 lbs 265.00 cwt. Slaughter Bucks: Utility and Good 2 -3 few 145-300 lbs 81.00-93.00; couple aged 61.00-67.00. GOATS: 40 head (prices per hundred weight) Slaughter Kids: Selection 1 few 55-75 lbs 250.00-260.00 cwt; Selection 1-2 few 60-70 lbs 230.00-240.00 cwt. Nannies: Selection 2 few 85-130 lbs 110.00-115.00 cwt. Billies: Selection 1-2 ind 105 lbs 135.00 cwt, yearling 70 lbs 160.00 cwt.

WEEKLY COMMODITY GRAIN FUTURES TRENDS

Compared to last Friday: Soybeans .26 to .33 higher, Wheat .15 to .20 higher, Corn .07 to .10 higher, Kansas City Wheat .16 to .20 higher, Soybean Meal 10.10 to 11.20 higher.

Daily Grain Futures Closes

	Mon.	Tues.	Wed.	Thu.	Fri.
Soybeans					
Mar	1036	1042 3/4	1058 3/4	1050 1/2	1059
May	1046 1/4	1053 1/4	1069 1/4	1061 1/2	1070
Jul	1055	1061 1/2	1076 3/4	1069 1/2	1077 3/4
Aug	1052 3/4	1059	1073	1066 3/4	1074 3/4
Sep	1034 1/4	1038 1/2	1050 1/4	1045 3/4	1052
Wheat					
Mar	422 1/2	430 3/4	432 1/2	443 1/2	449
May	435 1/2	442 1/2	443 1/2	455 1/4	463
Jul	448 3/4	455 1/4	456	467	474 3/4
Sep	463 3/4	468 3/4	469 1/4	479 1/4	486 1/2
Dec	481	485 1/4	486 1/4	496	503
Corn					
Mar	363 3/4	368 1/2	370 3/4	369 1/2	374 1/2
May	371 1/4	376	378 1/2	377 1/4	382
Jul	378 1/4	383 1/4	385 1/2	384	388 3/4
Sep	385	389 3/4	391 1/2	389 3/4	394
Dec	392	396 1/4	397 1/2	395 3/4	399 1/4
KC Wheat					
Mar	435 3/4	439 1/2	442	451 1/4	460 1/2
May	448 3/4	452 1/2	454 3/4	463 1/2	473 1/4
Jul	461	464	466 1/2	475	484 1/2
Sep	475 3/4	478 1/4	480 1/2	488 3/4	497 1/4
Dec	496 1/2	500	502	541	517 1/4
SB Meal					
Mar	332.80	335.90	341.20	338.40	342.10
May	336.50	340.10	345.30	342.60	346.50
Jul	339.20	342.80	347.60	345.10	349.10
Aug	337.20	340.70	345.40	343.30	347.20
Sep	334.20	337.60	341.70	340.40	343.80

WEEKLY COMMODITY FUTURES TRENDS

Compared to last week: Live Cattle .30 to 2.47 lower, except Oct .18 higher, Lean Hogs .53 to 4.23 higher, Feeder Cattle .57 to 1.50 lower, except May and Aug .20 to 1.10 higher..

Daily Futures Closes

	Mon.	Tues.	Wed.	Thu.	Fri.
Cattle					
Feb	116.42	117.67	116.77	117.65	116.40
Apr	115.62	116.50	114.75	114.82	113.15
Jun	105.82	106.57	105.25	105.27	104.27
Aug	101.50	102.35	101.52	101.75	101.07
Oct	101.40	102.35	101.65	102.12	101.50
Lean Hogs					
Feb	71.35	72.37	73.35	74.22	74.55
Apr	71.22	72.17	71.72	70.77	71.07
May	75.10	76.00	75.72	74.80	75.40
Jun	79.10	79.90	79.62	78.55	79.05
Jul	78.35	79.17	78.90	77.97	78.40
Fdr Cat					
Mar	123.52	124.22	122.30	123.62	122.07
Apr	123.57	124.62	122.97	124.05	122.45
May	122.55	123.47	122.00	123.15	121.80
Aug	123.85	124.87	123.52	124.75	123.60
Sep	122.35	123.77	122.55	123.92	122.92
Milk					
Feb	16.79	16.78	16.89	16.85	16.86
Mar	16.89	16.81	16.93	16.93	16.92
Apr	17.00	16.92	17.02	17.12	17.02

INTERIOR MISSOURI DIRECT HOGS

Weekly Receipts: 3000 Week ago: 2884 Year ago: 2201
Compared to last week, barrows and gilts 2.00 to 4.00 higher. Sows 3.00 lower to 1.00 higher.

BARROWS AND GILTS:

Base carcass meat price 59.00-62.00. weekly top Fri 62.00

SOWS:

300-500 lbs. 19.00-22.00
Over 500 lbs. 22.00-27.00

WEEKLY MARKET SUMMARY
 (USPS 597250)
 To be published weekly by the
 Missouri Department of Agriculture
 1616 Missouri Blvd.
 Jefferson City, MO 65109

Postmaster: Send address changes to:
 Missouri Department of Agriculture
 P.O. Box 630
 Jefferson City, MO 65102

Periodicals postage paid at
 Jefferson City, Missouri

Market News Hotline
1-573-522-9244

February 10, 2017

MISSOURI GRAIN WEEKLY TRENDS

Weekly Trends: Soybeans .31 to .33 higher, Soft Wheat .19 to .24 higher, Corn .05 to .06 higher, Sorghum .20 lower to .16 higher.

Area	#1 Soy-beans	#2 Soft Wheat	#2 Corn	#2 Grain Sorghum
Kansas City				
Friday**	9.72-9.79	3.55-3.70	3.45-3.50	5.57
Monday	9.81-9.88	3.47-3.62	3.43-3.49	5.55
Tuesday	9.87-9.95	3.55-3.76	3.45-3.50	5.62
Wednesday	10.04-10.11	3.58-3.77	3.40-3.53	5.67
Thursday	9.95-10.02	3.68-3.88	3.39-3.51	5.64
Friday	10.04-10.11	3.74-3.94	3.44-3.56	5.73
St. Louis				
Friday**	10.30	4.25-4.35	3.79-3.80	5.44-5.98
Monday	10.09	4.17-4.29	3.76-3.77	5.41-5.94
Tuesday	10.46-10.47	4.25-4.36	3.80-3.81	5.50-6.03
Wednesday	10.63-10.65	4.27-4.38	3.82-3.84	5.53-5.71
Thursday	10.53	4.38-4.49	3.80-3.81	5.51-5.69
Friday	10.61-10.63	4.44-4.54	3.84-3.85	5.60-5.78
Central				
Friday**	9.62	3.40	3.33-3.35	—
Monday	9.71	3.32-3.33	3.32-3.34	—
Tuesday	9.77-9.78	3.40-3.41	3.36-3.39	—
Wednesday	9.93-9.94	3.42-3.43	3.39-3.41	—
Thursday	9.85-9.86	3.53-3.54	3.37-3.40	—
Friday	9.94-9.97	3.59-3.69	3.42-3.45	—
S.E. MO				
Friday**	10.21-10.28	4.42	3.73-3.76	6.10
Monday	10.31-10.37	4.34	3.71-3.74	6.07
Tuesday	10.40-10.43	4.41	3.78-3.79	6.12
Wednesday	10.56-10.62	4.43	3.80-3.84	5.98
Thursday	10.47-10.55	4.54	3.78-3.79	6.14
Friday	10.53-10.64	4.55	3.82-3.84	6.21

(PRICES PER BU. EXCEPT GR. SORG. PER CWT)
 *NEW CROP **PREVIOUS WEEK'S PRICES

Missouri Weekly Hay Summary Week ending 02/10/2017

The state saw some very drastic weather swings this week. Not really uncommon for February in Missouri where you can have 70 one day and snow the next, which pretty much describes this week depending on which corner of the state one was in. Farmers continue to use up hay supplies but most seem to have adequate amounts on hand for the rest of the feeding season. Other than horse customers and dairy farmers, hay movement remains slow. The supply of hay is moderate, demand is light and prices are mostly steady. The Missouri Department of Agriculture has a hay directory available for both buyers and sellers. To be listed, or for a directory visit <http://mda.mo.gov/abd/haydirectory/> for listings of hay <http://agebb.missouri.edu/haylst/> (All prices f.o.b. and per ton unless specified and on most recent reported sales price listed as round bales based generally on 5x6 weights with weights of approximately 1200-1500 lbs).

Supreme quality Alfalfa (RFV <185) 180.00-240.00
 Premium quality Alfalfa (RFV 170-180) 160.00-200.00
 Good quality Alfalfa (RFV 150-170) 120.00-160.00
 small squares 4.50-5.00 per bale
 Fair quality Alfalfa (RFV 130-150) 100.00-120.00

Good quality Mixed Grass hay 75.00-100.00
 Small squares 3.00-4.50 per bale (some alfalfa/grass mix)
 Fair to Good quality Mixed Grass hay 50.00-80.00
 small squares 2.50-3.50 per bale
 Fair quality Mixed Grass hay 15.00-25.00 per large round bale

Fair to Good quality Bromegrass 50.00-80.00

Wheat straw 3.00-6.00 per small square bale