

# Weekly Market Summary

Published by:  
**Missouri Department of Agriculture**  
**Ag Business Development Division**  
**Market News Program**



Chris Chinn, Director  
 Ken Struempf, Division Director  
 Tony Hancock, Editor  
 agmarketnews.mo.gov  
 http://www.ams.usda.gov/

Eric R. Greitens, Governor

Volume XXXVII, Number 11 ♦ P.O. Box 630, Jefferson City, MO 65102 ♦ (573) 751-4211 ♦ Friday March 17, 2017

## MISSOURI WEEKLY FEEDER CATTLE WEIGHTED AVERAGE REPORT

Receipts: 33,058 Week ago: 31,395 Year ago: 32,204  
 Steers and Heifers Medium and Large 1 Hols. Large 3

Fdr. STEERS:		Fdr. HEIFERS:		Hols. STEERS	
359 lbs.	176.41	358 lbs.	154.67	472 lbs.	89.45
457 lbs.	170.50	456 lbs.	146.17	584 lbs.	70.00
549 lbs.	161.10	546 lbs.	137.95	868 lbs.	71.80
648 lbs.	147.47	646 lbs.	130.05	1000 lbs.	68.00
745 lbs.	134.25	738 lbs.	122.46		
834 lbs.	125.20	825 lbs.	117.11		
932 lbs.	121.63				

## SOUTHERN MISSOURI WEEKLY SUMMARY (West Plains, Ava)

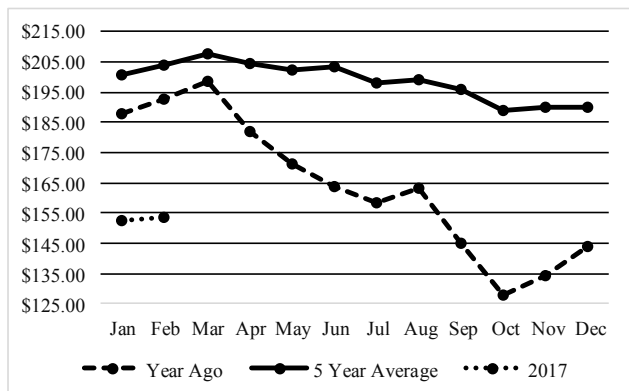
Receipts: 4261 Weeks ago: 4809 Year ago: 5365  
 Compared to last week, feeders sold steady to 2.00 higher, with some steers under 450 lbs up to 10.00 higher, and some heifers under 550 lbs up to 5.00 higher. Slaughter cows steady to 4.00 higher. Slaughter bulls sold steady to 2.00 higher.

STEERS:		HEIFERS:	
Medium and Large 1		Medium and Large 1	
300-400 lbs.	172.00-188.00	300-400 lbs.	146.00-160.00
400-500 lbs.	159.00-184.00	400-500 lbs.	136.00-152.50
500-600 lbs.	150.00-168.00	500-600 lbs.	127.00-144.00
600-700 lbs.	130.00-152.00	600-700 lbs.	124.00-138.00
700-800 lbs.	127.50-135.50	700-800 lbs.	120.00-123.00
		Pkg 863 lbs.	115.00-116.50

Holsteins:		SLAUGHTER COWS:	
Large 3		Breaking and Boning (70-85% lean) 62.00-71.00, high dressing 65.00-76.00. Lean (85-90%) 53.00-67.00	
Pkg 848 lbs	76.00		
Pkg 1000 lbs	68.00		

SLAUGHTER BULLS:		REPLACEMENT COWS:	
Yield Grade 1-2 1035-2300 lbs. 85.00-98.500, high dressing 95.50-104.00, low dressing 73.00-86.50	Medium and Large 1-2 3-7 yrs 950-1500 lbs 2nd to 3rd stage 1050.00-1500.00; 1st stage 1050.00-1300.00; short solid to broken mouth 925-1375 lbs mostly 3rd stage 925.00-1100.00 per head		
<u>COW &amp; CALF PAIRS:</u> Medium and Large 1-2 2-6 yrs 900-1200 lbs with 100-150 lbs calves 1300.00-1800.00 per pair 7 yrs to broken mouth 950-1350 lbs 150-300 lbs calves 1050.00-1375.00 per pair			

## Historical Feeder Steers Medium and Large 1 500-600 lbs. Weighted Average



**Year Ago Slaughter Steers and Heifers:**  
 Northeast Missouri: Steers: Choice 2-3 1150-1575 lbs 136.75-138.75  
 Heifers: Choice 2-3 pkg 1180 lbs 137.50

East Central Missouri: Choice with Prime ends 2-3 1040-1325 lbs 132.50-136.75. Choice 2-3 1160-1345 lbs 127.50-133.00

## SOUTHWEST MISSOURI WEEKLY SUMMARY (Joplin and Springfield)

Feeder Cattle Receipts: 8424 Week ago: 8979 Year ago: 6799  
 Cow and Bull Receipts: 1026 Week ago: 1242 Year ago: 1264  
 Compared to last week, feeders unevenly steady to 3.00 higher, spots 4.00 to 5.00 higher early week. Slaughter cows 1.00 to 2.00 higher. Slaughter bulls steady to 2.00 higher.

STEERS:		HEIFERS:	
Medium and Large 1		Medium and Large 1	
300-400 lbs.	175.00-195.00	300-400 lbs.	142.00-171.00
400-500 lbs.	162.00-188.00	400-500 lbs.	134.00-147.00
500-600 lbs.	144.50-178.00	500-600 lbs.	128.00-142.25
600-700 lbs.	130.50-152.00	600-700 lbs.	119.00-130.00
700-800 lbs.	122.00-139.25	700-800 lbs.	114.00-125.25
800-900 lbs.	119.00-128.75	800-850 lbs.	118.00-120.25

HOLSTEINS:		SLAUGHTER COWS:	
Large 3		Breaking and Boning (70-85% lean) 60.50-71.50, high dressing 66.50-76.00. Lean (85-90%) 52.00-64.00	
Load 472 lbs.	90.00		
Lot 584 lbs.	70.00		
Pkg 757 lbs.	65.00		
Lot 891 lbs.	67.00		

REPLACEMENT COWS:		COW & CALF PAIRS:	
Medium and Large 1 2 yrs 1150 lbs 2nd stage 1525.00. Medium and Large 1-2 2 yrs to short solid 940-1350 lbs 2nd to 3rd stage 1100.00-1485.00 per head	Medium and Large 1-2 3-4 yrs 1295-1300 lbs with 480-500 lb calves all rebred 1900.00-2050.00; 6 yrs to short solid 1195-1230 lbs with babies to 320 lb calves few rebred 1435.00-1450.00 per pair		

The Weekly Market Summary is available to anyone for a \$25.00 annual subscription fee. To subscribe, send your check or money order to: Weekly Market Summary, Missouri Department of Agriculture, P.O. Box 630, Jefferson City, MO 65102.

**WEST CENTRAL MISSOURI WEEKLY SUMMARY**

(Sedalia, Kingsville, Butler)

Receipts: 3238 Week Ago: 5561 Year ago: 3900

Compared to last week, steers and heifers steady to 5.00 higher. Slaughter cows sold mostly steady 2.00 higher.

FEEDER STEERS:  
Medium and Large 1400-500 lbs. 160.00-181.50  
500-600 lbs. 148.00-171.00  
600-700 lbs. 136.50-159.00  
700-800 lbs. 125.00-140.25  
800-900 lbs. 119.50-129.00FEEDER HEIFERS:  
Medium and Large 1400-500 lbs. 141.00-160.00  
500-600 lbs. 126.50-147.00  
600-700 lbs. 123.00-136.50  
700-800 lbs. 114.00-130.10  
800-900 lbs. 116.00-120.00SLAUGHTER BULLS: Yield  
Grade 1-2 1270-2285 lbs 87.00-  
95.00, high dressing 97.00-107.50,  
low dressing 69.00-86.00SLAUGHTER COWS: Breaking  
and Boning (70-85% lean)  
60.00-72.50. Lean (85-90%)  
56.00-65.00COW & CALF PAIRS: Medium  
and Large 1-2 4yrs to short and  
solid 1125-1405 lbs babies to 300  
lbs 1335.00-1685.00 per pair.REPLACEMENT COWS:  
Medium and Large 1-2 2-6 yrs  
950-1340 lbs 1st-3rd stage  
960.00-1300.00 per head**EAST CENTRAL MISSOURI WEEKLY SUMMARY**

(Bowling Green, Kingdom City, Macon, Boonville)

Receipts: 5750 Week ago: 4557 Year ago: 6107

Compared to last week, feeders 2.00 to 8.00 higher, except steers over 800 lbs steady to firm. Slaughter cows 2.00 to 5.00 higher.

FEEDER STEERS:  
Medium and Large 1400-500 lbs. 166.00-178.00  
500-600 lbs. 156.00-178.00  
600-700 lbs. 141.00-160.00  
700-800 lbs. 123.50-147.00  
800-900 lbs. 120.50-129.00FEEDER HEIFERS:  
Medium and Large 1300-400 lbs. 145.00-158.00  
400-500 lbs. 143.00-159.00  
500-600 lbs. 131.00-150.00  
600-700 lbs. 123.00-137.75  
700-800 lbs. 118.00-128.00SLAUGHTER STEERS and  
HEIFERS: Choice 2-3 1130-  
1455 lbs 125.50-128.00. Select 1-  
2 few 103.00-107.00SLAUGHTER COWS: Breaking  
and Boning, (70-85% lean) Average  
dressing 59.00-68.50, high  
dressing 68.50-78.00, Lean (85-  
90%) 57.00-67.00REPLACEMENT COWS: ScarceSLAUGHTER BULLS: Yield  
Grade 1-2 1200-2250 lbs 85.00-  
95.00, high dressing 97.00-106.00**NORTHEAST MISSOURI WEEKLY SUMMARY**

(Palmyra, Unionville, Green City, New Cambria)

Feeder Cattle Receipts: 6840 Week ago: 1121 Year ago: 2610

Slaughter Cattle Receipts: 66 Week ago: 28 Year ago: 17

Compared to last week feeders 3.00-6.00 higher spots 8.00 higher. Slaughter cows 2.00 to 4.00 higher. Slaughter steers and heifers 1.00 higher.

FEEDER STEERS:  
Medium and Large 1400-500 lbs. 166.00-191.50  
500-600 lbs. 154.00-172.50  
600-700 lbs. 142.50-157.50  
700-800 lbs. 124.00-145.00  
800-900 lbs. 123.50-129.50FEEDER HEIFERS:  
Medium and Large 1300-400 lbs. 156.75-169.00  
400-500 lbs. 140.00-160.00  
500-600 lbs. 137.75-150.25  
600-700 lbs. 128.10-136.50  
700-800 lbs. 123.00-128.00SLAUGHTER STEERS:  
Choice 2-3 1250-100 lbs 127.25-  
129.75.SLAUGHTER COWS: Breaking  
and Boning (75-85% lean) 61.00-  
71.50, high dressing 67.50-76.50;  
Lean (85-90%) 58.50-68.50SLAUGHTER HEIFERS:  
Choice 2-3 1100-1350 lbs 126.00-  
128.25SLAUGHTER BULLS: Yield  
Grade 1-2 1300-2200 lbs 84.00-  
95.75 high dressing up to 101.50COW & CALF PAIRS: ScarceREPLACEMENT COWS:  
Scarce**SOUTHEAST MISSOURI WEEKLY SUMMARY**

(Farmington, Patton)

Receipts: 2006 Week ago: 2494 Year ago: 2382

Compared to a week ago, feeders steady to 6.00 lower, except over 600 lbs 4.00 to 8.00 higher. Slaughter cows 3.00 higher. Slaughter bulls steady.

FEEDER STEERS:  
Medium and Large 1300-400 lbs. 160.00-182.00  
400-500 lbs. 148.00-171.00  
500-600 lbs. 138.00-165.00  
600-700 lbs. 128.00-147.25  
700-800 lbs. 121.00-135.50FEEDER HEIFERS:  
Medium and Large 1300-400 lbs. 136.00-163.00  
400-500 lbs. 125.00-149.00  
500-550 lbs. 119.00-143.50  
600-700 lbs. 115.00-136.00  
700-800 lbs. 115.00-123.00REPLACEMENT COWS: Medium  
and Large 1-2 5 yrs to short solid  
920-1505 lbs 2nd to 3rd stage  
850.00-1300.00 per headSLAUGHTER COWS: Breaking  
and Boning (75-85% lean) 55.50  
-66.00, Lean (85-90% lean)  
47.00-58.00COW & CALF PAIRS: Medium  
and Large 1-2 5 yrs to short solid  
980-1265 lbs with 210-380 lb  
calves 1050.00-1675.00 per pairSLAUGHTER BULLS: Yield  
Grade 1-2 few 1155-2078 lbs  
75.00-85.50, high dressing 88.00  
-103.50**SOUTH CENTRAL MISSOURI WEEKLY SUMMARY**

(Cuba, Vienna)

Receipts: 1165 Week ago: 2003 Year ago: 2512

Compared to last week, steers and heifers steady to 6.00 higher, except some heifers near 700 lbs 2.00-4.00 lower. Slaughter cows steady to 2.00 higher.

FEEDER STEERS:  
Medium and Large 1Pkg 372 lbs. 184.00  
400-500 lbs. 160.00-174.00  
500-600 lbs. 146.00-168.50  
600-700 lbs. 134.00-147.25  
700-800 lbs. 129.00-134.00FEEDER HEIFERS:  
Medium and Large 1300-400 lbs. 144.00-153.50  
400-500 lbs. 144.00-152.50  
500-600 lbs. 132.00-150.00  
600-700 lbs. 124.00-133.00  
700-800 lbs. 114.75-117.75REPLACEMENT COWS: Medium  
and Large 1-2 3-7 yrs 1025-1450 lbs  
1st to 2nd stage 1025.00-1325.00 per  
headSLAUGHTER COWS: Breaking  
and Boning (70-85% lean)  
62.50-70.00, high dressing 71.00  
-74.00. Lean (85-90%) 58.00-  
64.00COW & CALF PAIRS: ScarceSLAUGHTER BULLS: Yield  
Grade 1-2 1350-2400 lbs 86.50-  
96.00, low dressing 74.50-85.75**NORTHWEST MISSOURI WEEKLY SUMMARY**

(St Joseph)

Receipts: 2500 Weeks ago: 2643 Year ago: 2749

Compared to last week, feeders steady to 2.00 higher, except 450-550 lbs 3.00 to 5.00 higher. Slaughter cows steady to 3.00 higher. Slaughter bulls 2.00 to 3.00 higher.

FEEDER STEERS:  
Medium and Large 1400-500 lbs. 160.00-180.25  
500-600 lbs. 152.50-176.25  
600-700 lbs. 134.00-156.00  
700-800 lbs. 127.50-146.85  
800-850 lbs. 120.00-127.50  
900-950 lbs. 118.00FEEDER HEIFERS:  
Medium and Large 1300-400 lbs. 155.00-178.00  
400-500 lbs. 135.00-158.50  
500-600 lbs. 130.50-155.25  
600-700 lbs. 122.00-139.50  
700-800 lbs. 119.00-134.00  
800-850 lbs. 117.50SLAUGHTER BULLS:  
Yield grade 1-2 1375-2645 lbs  
84.00-90.00, high dressing 93.00  
-100.00, low dressing 65.00-  
80.00SLAUGHTER COWS:  
Breaking and Boning (70-85% lean)  
60.00-69.50, high dressing 70.00-  
75.50. Lean (85-90%) 50.00-59.50BRED COWS: Medium and  
Large 1 2-5 yrs 1125-1210 lbs  
3rd stage 1550.00-1800.00, few  
6-7 yrs 1383 lbs 3rd stage pair  
1550.00 per headCOW-CALF PAIRS: Medium and  
Large 1-2 pkg 2 yrs 1100-1200 lbs  
with 75-100 lb calves 2250.00 per

**MISSOURI WEEKLY DIRECT WEANER AND FEEDER PIG REPORT**

Receipts: 9430 Weaner pigs steady to 2.00 lower. Feeder pigs no sales reported. Prices per head. Early weaned pigs 10 lb. base weights FOB the farm 0% negotiated, 4882 head, 10 lbs, 38.00-43.16, weighted average 41.57. Early weaned pigs 10 lbs base weights delivered 84% negotiated, 4548 head, 10 lbs 36.41-51.50, weighted average 43.24.

**WHOLESALE FEEDSTUFFS PRICES  
(DOLLARS PER TON-BULK BASIS)**

Area	Soybean Meal 48% Solvent	Cottonseed Meal 41% Solvent	Meat Meal	Wheat Middlings
Kansas City	306.50	260.00	290.00	122.50
St. Louis	341.00	280.00	285.00	120.00

**MISSOURI WEEKLY DIRECT  
SLAUGHTER CATTLE REPORT**

Weekly Receipts: 320 Week ago: 280 Year ago: 120  
Trading from last week through Friday morning remains light as bids are steady to higher with dressed grid sales 7.00 higher and a light test of live sales 9.00 higher.

LIVE STEERS & HEIFERS: 1 load 133.00 fob  
DRESSED STEERS & HEIFERS: 1 load Holsteins 168.00

GRADE AND WEIGHT (Grid):  
6 loads 212.00

**By-Product Feed Prices**

Alfalfa Pellets, St. Louis MO 235.00; Corn Gluten Feed pelleted, Butler, MO FOB out; Distillers Grain Dried, FOB Carrollton, MO 115.00; Soy Hulls Kansas City, MO 130.00. Prices per ton.

**Norwood -Producers Auction Yards**

**Special Dairy Heifer Sale Report for 03/09/2017**

Receipts: 404 Last Month Special: 234 Year Ago: 661  
Springer Heifers Bred Seven to Nine Months: Supreme 1375.00-1540.00, Individual Crossbred 1325.00. Approved 1175.00-1375.00. Medium 850.00-1100.00. Heifers Bred Four to Six Months: Supreme Individual 1480.00. Medium 875.00-975.00. Open heifers: Approved 200-300 lbs 500.00-620.00; 400-500 lbs Individual 600.00; 600-700 lbs 720.00-735.00; 700-800 lbs 810.00-900.00. Fresh Milking Heifers and Cows: Supreme 1425.00-1550.00. Approved 1150.00-1400.00, Individual Jersey 1100.00. Medium 1025.00-1150.00. Common 625.00-800.00, Individual Crossbred 750.00. Bred and Springer Cows: Approved 1200.00-1275.00. Baby Calves: Holstein Heifers Small Pair 100.00. Holstein Bulls Large 120.00-150.00, Small 40.00-90.00. Jersey Bulls Pair 35.00. Crossbred Bulls Large Pair 130.00, Small 45.00-65.00. Beef Cross Heifers 170.00-200.00. Beef Cross Bulls 150.00-210.00.

**Diamond—TS Whites Sheep and Goat Auction for 03/02/2017**

Receipts: 1147 Last Month: 1636 Last Year: 860  
SHEEP: Feeder Lambs: Medium and Large 1 28-39 lbs 250.00-275.00. Medium and Large 1-2 27-36 lbs 205.00-235.00. Slaughter Wool Lambs: Choice and Prime 2-4 62-72 lbs 250.00-260.00; 132-141 lbs 135.00-142.50. Hair lambs: Prime 3-4 47-68 lbs 270.00-280.00; 68-78 lbs 260.00-265.00; 80-92 lbs 222.50-230.00; 130-135 lbs 130.00-137.50. Choice 2-3 44-58 lbs 260.00-265.00; 60-78 lbs 250.00-252.50; 82-110 lbs 175.00-195.00; 125-150 lbs 105.00-117.50. Several families of Hair Ewes with single or twin lambs: Ewes Good and Choice 1-3 105.00-115.00 per head. Replacement Hair Ewes: Medium and Large 1-2 145.00-255.00 Per Head; 108-130 lbs 165.00-185.00. Slaughter Hair Ewes: Good 2-3 105-145 lbs 105.00-135.00. Replacement Hair rams: Medium and Large 1-2 250.00-350.00 Per Head; 150-170 lbs 120.00-135.00. Slaughter Hair Rams: Good 1-3 125-180 lbs 102.50-115.00. GOATS: Bottle Kids: Selection 1 80.00-170.00 per head. Selection 2 22.50-40.00 per head. Feeder kids: Selection 1 30-33 lbs 282.50-290.00. Selection 2 30-38 lbs 250.00-265.00; 25-35 lbs 232.50-240.00. Selection 3 20-33 lbs 120.00-125.00. Slaughter Kids: Selection 1 45-68 lbs 285.00-305.00; 70-105 lbs 230.00-255.00. Selection 2 40-70 lbs 260.00-285.00; 68-90 lbs 230.00-255.00. Several Families with single and twin kids. Selection 1 and 2 100.00-140.00 per head. Replacement Does: Selection 1 and 2 145.00-250.00 per head. Slaughter Does: Selection 1 135-150 lbs 200.00-220.00. Selection 2 and 3 64-185 lbs 130.00-160.00. Slaughter Bucks: Selection 1 and 2 80-160 lbs 140.00-165.00. Selection 3 50-100 lbs 100.00-125.00.

**WEEKLY COMMODITY GRAIN FUTURES TRENDS**

Compared to last Friday: Soybeans .05 to .06 lower, Wheat .03 to .04 lower, Corn .03 higher, Kansas City Wheat .02 to .03 lower, Soybean Meal .40 lower to .20 higher.

**Daily Grain Futures Closes**

	Mon.	Tues.	Wed.	Thu.	Fri.
Soybeans					
Mar	996 1/4	987 1/4	—	—	—
May	1006	999 1/4	998	1001 1/2	1000
Jul	1015 3/4	1009	1008	1011 1/2	1010
Aug	1017	1010	1008 3/4	1012 1/2	1011
Sep	1007 3/4	1001	999 1/2	1002 1/2	1001
Wheat					
Mar	412 1/4	412	—	—	—
May	430 1/2	430 1/2	436	436	436 1/4
Jul	446 1/2	445 3/4	450 3/4	451	451 1/2
Sep	461 1/2	460 1/2	465 1/4	465 1/2	466 3/4
Dec	479 3/4	478 3/4	483	483 3/4	485 1/2
Corn					
Mar	354 1/2	353 3/4	—	—	—
May	361	362 1/4	363 1/2	366	367 1/2
Jul	368 1/2	369 3/4	371	373 1/2	375
Sep	375 3/4	376 3/4	377 1/2	380	382 1/4
Dec	383 1/2	384 1/4	385	387 1/2	389 3/4
KC Wheat					
Mar	432 1/2	433 1/4	—	—	—
May	442 3/4	442 1/2	447 1/4	450	453 1/2
Jul	454 3/4	454 1/2	459	461 3/4	465 1/4
Sep	470	469 1/4	473 3/4	476	479 3/4
Dec	490 1/4	489 1/2	493 1/2	495 1/4	499
SB Meal					
Mar	326.90	323.30	—	—	—
May	330.90	327.20	327.60	329.30	328.90
Jul	334.40	330.60	330.90	332.60	332.20
Aug	333.80	330.10	330.10	331.70	331.30
Sep	332.60	328.80	328.70	330.30	329.70

**WEEKLY COMMODITY FUTURES TRENDS**

Compared to last week: Live Cattle 1.72 to 2.40 higher, Lean Hogs .42 to .88 higher, Feeder Cattle 2.90 to 4.95 higher.

**Daily Futures Closes**

	Mon.	Tues.	Wed.	Thu.	Fri.
Cattle					
Apr	117.75	116.32	117.70	119.20	119.32
Jun	108.10	106.90	108.25	109.42	109.67
Aug	103.55	102.85	103.97	104.92	105.45
Oct	103.57	103.02	103.85	104.75	105.25
Dec	104.65	104.05	104.77	105.60	106.02
Lean Hogs					
Apr	70.22	70.82	70.07	69.90	69.05
May	74.75	75.32	74.90	74.80	73.62
Jun	78.72	79.17	78.82	78.67	77.32
Jul	78.57	78.90	78.42	78.52	77.47
Aug	78.47	78.85	78.40	78.50	77.62
Fdr Cat					
Mar	128.60	127.85	129.22	130.55	131.32
Apr	128.10	127.42	128.70	130.55	131.62
May	127.00	126.52	127.72	129.42	130.37
Aug	128.75	127.82	128.97	130.17	131.05
Sep	128.25	127.17	128.20	129.12	129.87
Milk					
Mar	15.69	15.73	15.67	15.70	15.73
Apr	15.51	15.51	15.22	14.97	15.28
May	15.65	15.75	15.38	15.15	15.40

**INTERIOR MISSOURI DIRECT HOGS**

Weekly Receipts: 2449 Week ago: 2588 Year ago: 2796  
Compared to last week, barrows and gilts 1.00 lower. Sows 100 to 3.00 higher.

BARROWS AND GILTS: Base carcass meat price 58.00-61.00. weekly top Fri 61.00  
SOWS: 300-500 lbs. 23.00-29.00  
Over 500 lbs. 27.00-33.00

WEEKLY MARKET SUMMARY  
 (USPS 597250)  
 To be published weekly by the  
 Missouri Department of Agriculture  
 1616 Missouri Blvd.  
 Jefferson City, MO 65109

Postmaster: Send address changes to:  
 Missouri Department of Agriculture  
 P.O. Box 630  
 Jefferson City, MO 65102

Periodicals postage paid at  
 Jefferson City, Missouri

**Market News Hotline**  
**1-573-522-9244**

**March 17, 2017**

**MISSOURI GRAIN WEEKLY TRENDS**

Weekly Trends: Soybeans .01 to .08 lower, Soft Wheat .01 to .04 lower, Corn .03 to .05 higher, Sorghum .06 to .08 higher.

Area	#1 Soy-beans	#2 Soft Wheat	#2 Corn	#2 Grain Sorghum
<b>Kansas City</b>				
Friday**	9.42-9.54	3.51-3.92	3.27-3.42	5.42
Monday	9.41-9.54	3.40-3.82	3.24-3.59	5.37
Tuesday	9.34-9.47	3.41-3.85	3.25-3.40	5.39
Wednesday	9.33-9.46	3.46-3.91	3.26-3.41	5.41
Thursday	9.49-9.52	3.91	3.29-3.44	5.46
Friday	9.50-9.52	3.91	3.31-3.47	5.48
<b>St. Louis</b>				
Friday**	10.00-10.02	4.20-4.35	3.71-3.73	5.42
Monday	10.01	4.10-4.25	3.70	5.37
Tuesday	9.95-9.97	4.10-4.25	3.71	5.39
Wednesday	9.94-10.00	4.16-4.30	3.74-3.75	5.41
Thursday	9.98-10.00	4.16-4.31	3.77	5.46
Friday	9.94	4.16-4.31	3.76	5.50
<b>Central</b>				
Friday**	9.36-9.42	3.50-3.51	3.24-3.29	—
Monday	9.36-9.41	3.40-3.41	3.21-3.26	—
Tuesday	9.29-9.34	3.40-3.41	3.22-3.27	—
Wednesday	9.28-9.33	3.46	3.23-3.29	—
Thursday	9.31-9.37	3.46	3.26-3.31	—
Friday	9.30-9.35	3.46	3.27-3.33	—
<b>S.E. MO</b>				
Friday**	9.93-9.99	4.41	3.63-3.71	5.71
Monday	9.93-10.02	4.35	3.60-3.68	5.66
Tuesday	9.86-9.96	4.36	3.64-3.70	5.69
Wednesday	9.87-9.95	4.40	3.66-3.71	5.73
Thursday	9.88-9.98	4.36	3.65-3.74	5.73
Friday	9.86-9.96	4.36	3.67-3.76	5.80

(PRICES PER BU. EXCEPT GR. SORG. PER CWT)  
 \*NEW CROP \*\*PREVIOUS WEEK'S PRICES

**Missouri Weekly Hay Summary Week ending 03/17/2017**

Thoughts of Spring disappeared this week as freezing temperatures and even a late winter snow came to several parts of the state. The snow was short lived but very concerning temperatures lasted several days. Some valleys and low areas in the Ozarks barely stayed in the double digits on Tuesday night recording an official 10 degrees. It will take a while to see what extent damage was. The big story this week however was hay movement. Although it was not actual sales of hay producers in Missouri as well as many other states opened their hearts this week and sent convoy after convoy of surplus hay supplies to fellow farmers and ranchers in the four state area that lost so much in the fires. The supply of hay is moderate, demand is light and prices are steady to weak. The Missouri Department of Agriculture has a hay directory available for both buyers and sellers. To be listed, or for a directory visit <http://mda.mo.gov/abd/haydirectory/> for listings of hay <http://agebb.missouri.edu/haylst/> (All prices f.o.b. and per ton unless specified and on most recent reported sales price listed as round bales based generally on 5x6 bales with weights of approximately 1200-1500 lbs).

Supreme quality Alfalfa (RFV <185) 180.00-225.00  
 Premium quality Alfalfa (RFV 170-180) 160.00-200.00  
 Good quality Alfalfa (RFV 150-170) 120.00-160.00  
 small squares 4.50-5.00 per bale  
 Fair quality Alfalfa (RFV 130-150) 100.00-120.00

Good quality Mixed Grass hay 75.00-100.00  
 Small squares 3.00-4.50 per bale (some alfalfa/grass mix)  
 Fair to Good quality Mixed Grass hay 50.00-80.00  
 small squares 2.50-3.50 per bale  
 Fair quality Mixed Grass hay 15.00-25.00 per large round bale

Fair to Good quality Bromegrass 50.00-80.00

Wheat straw 3.00-6.00 per small square bale