

# Weekly Market Summary

Published by:

**Missouri Department of Agriculture  
Ag Business Development Division  
Market News Program**



Chris Chinn, Director  
Ken Struempf, Division Director  
Tony Hancock, Editor  
agmarketnews.mo.gov  
http://www.ams.usda.gov/

Eric R. Greitens, Governor

Volume XXXVII, Number 13 ♦ P.O. Box 630, Jefferson City, MO 65102 ♦ (573) 751-4211 ♦ Friday March 31, 2017

## MISSOURI WEEKLY FEEDER CATTLE WEIGHTED AVERAGE REPORT

Receipts: 29,842 Week ago: 33,775 Year ago: 28,225  
Steers and Heifers Medium and Large 1 Hols. Large 3

Fdr. STEERS:		Fdr. HEIFERS:		Hols. STEERS	
364 lbs.	183.15	363 lbs.	157.81	742 lbs.	74.82
458 lbs.	175.16	456 lbs.	149.47	850 lbs.	77.07
547 lbs.	166.24	548 lbs.	142.25	1165 lbs.	65.00
651 lbs.	150.77	645 lbs.	132.77		
745 lbs.	138.70	728 lbs.	126.84		
851 lbs.	128.26	825 lbs.	118.14		
938 lbs.	120.44	916 lbs.	115.91		

## SOUTHERN MISSOURI WEEKLY SUMMARY (West Plains, Ava)

Receipts: 4345 Weeks ago: 5678 Year ago: 3944

Compared to last week, feeders early week steady to 2.00 lower, except steer calves steady to 5.00 higher; feeders late week steady to 3.00 higher. Slaughter cows and bulls steady to 2.00 lower.

### STEERS: Medium and Large 1

300-400 lbs.	175.00-205.00	350-400 lbs.	150.00-161.00
400-500 lbs.	160.00-185.00	400-500 lbs.	139.00-155.00
500-600 lbs.	151.00-177.00	500-600 lbs.	128.00-149.00
600-700 lbs.	136.50-154.00	600-700 lbs.	123.00-133.00
700-750 lbs.	134.50-141.00	700-800 lbs.	119.00-124.50
800-900 lbs.	120.00-124.50	800-850 lbs.	117.85-118.25

### Holsteins: Large 3

Pkg 477 lbs.	75.00
Pkg 540 lbs.	68.00
Pkg 618 lbs.	62.50
Pkg 741 lbs.	75.00
Pkg 805 lbs.	68.00
Part load 1165 lbs.	65.00

### HEIFERS: Medium and Large 1

### SLAUGHTER COWS:

Breaking and Boning (70-85% lean) 62.00-69.00, high dressing 69.00-82.00. Lean (85-90%) 55.00-62.00

### SLAUGHTER BULLS:

Yield Grade 1-2 1060-2185 lbs. 85.00-96.00, high dressing 97.00-107.00, low dressing 72.50-85.50

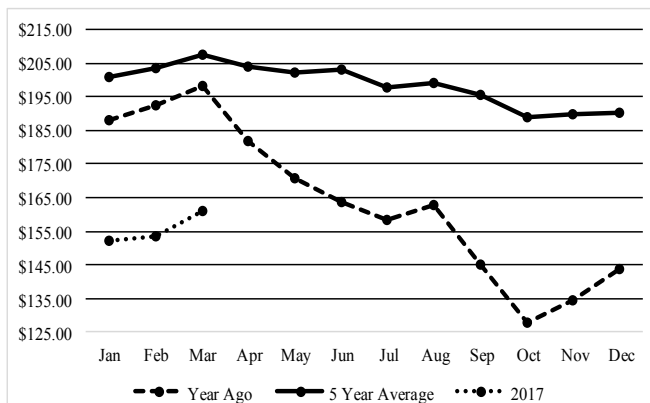
### COW & CALF PAIRS:

Medium and Large 1-2 3-7 yrs 850-1480 lbs with baby to 250 lb calves 1300.00-1725.00; 2-5 yrs 825-1310 lbs rebred 1st to 2nd stage with 200-250 lb calves 1500.00-1850.00 per pair

### REPLACEMENT COWS:

Medium and Large 1-2 2-6 yrs 1055-1515 lbs 1st to 3rd stage 1025.00-1350.00; 7 yrs to broken mouth 915-1295 lbs 2nd to 3rd stage 850.00-1050.00 per head. Medium and Large 2 2-7 yrs 785-1280 lbs 2nd to 3rd stage 650.00-1000.00 per head

## Historical Feeder Steers Medium and Large 1 500-600 lbs. Weighted Average



\*Graph is updated the first Friday of each month.

## Year Ago Slaughter Steers and Heifers:

Northeast Missouri: Steers: Choice 2-3 1150-1575 lbs 136.75-138.75.  
Heifers: Choice 2-3 pkg 1180 lbs 137.50

East Central Missouri: Choice 2-3 1100-1600 lbs 130.00-137.00.  
Select and Choice 2-3 136.50-138.00

## SOUTHWEST MISSOURI WEEKLY SUMMARY

(Joplin and Springfield)

Feeder Cattle Receipts: 6155 Week ago: 8369 Year ago: 5093

Cow and Bull Receipts: 1244 Week ago: 3246 Year ago: 1235

Compared to last week, feeders steady to 5.00 higher, except steer calves early week steady to 5.00 lower. Slaughter cows steady to 2.00 lower. Slaughter bulls 2.00-3.00 lower.

### STEERS: Medium and Large 1

400-500 lbs.	164.50-183.00
500-600 lbs.	151.50-183.00
600-700 lbs.	135.00-157.50
700-800 lbs.	132.00-137.00
800-850 lbs.	128.50-131.00
Lot 955 lbs.	122.00

### HEIFERS: Medium and Large 1

350-400 lbs.	152.00-158.00
400-500 lbs.	137.00-154.00
500-600 lbs.	128.00-151.00
600-700 lbs.	123.00-136.00
700-750 lbs.	120.00-131.00
Lot 902 lbs.	118.00

### HOLSTEINS: Large 3

Pkg 574 lbs.	65.00
Pkg 744 lbs.	74.50
Lot 863 lbs.	85.25

**SLAUGHTER COWS:** Breaking and Boning (70-85% lean) 64.00-71.00, high dressing 68.50-76.50. Lean (85-90%) 53.00-64.50

**SLAUGHTER BULLS:** Yield Grade 1-2 1145-2385 lbs 84.00-96.00, high dressing 93.50-105.50, low dressing 73.00-85.50

### REPLACEMENT COWS:

Medium and Large 1 2-7 yrs 940-1365 lbs 2nd to 3rd stage 1100.00-1450.00, 1st stage 955-1285 lbs 950.00-1075.00 per head

**COW & CALF PAIRS:** Medium and Large 1-2 2-7 yrs 1085-1365 lbs with babies to 350 lb calves some rebred 1300.00-1785.00 per pair

The Weekly Market Summary is available to anyone for a \$25.00 annual subscription fee. To subscribe, send your check or money order to: Weekly Market Summary, Missouri Department of Agriculture, P.O. Box 630, Jefferson City, MO 65102.

**WEST CENTRAL MISSOURI WEEKLY SUMMARY**

(Sedalia, Kingsville, Butler)

Receipts: 3761 Week Ago: 4869 Year ago: 3065

Compared to last week, feeders sold mostly steady. Slaughter cows unevenly steady.

FEEDER STEERS:

Medium and Large 1

400-500 lbs.	173.50-189.50
500-600 lbs.	155.50-175.00
600-700 lbs.	135.00-160.00
700-800 lbs.	129.85-149.75
800-900 lbs.	124.50-127.10

FEEDER HEIFERS:

Medium and Large 1

400-500 lbs.	138.50-169.00
500-600 lbs.	137.00-152.00
600-700 lbs.	120.00-137.50
700-800 lbs.	118.00-131.75
800-900 lbs.	118.75-122.25

SLAUGHTER BULLS: Yield  
Grade 1-2 1235-2165 lbs 84.00-  
95.50, high dressing 97.00-103.00,  
low dressing 79.00-87.00

SLAUGHTER COWS: Breaking  
and Boning (70-85% lean)  
64.00-74.00. Lean (85-90%)  
58.00-67.00

COW & CALF PAIRS: Medium  
and Large 1-2 2 yrs to short solid  
1200-1300 lbs with baby to 350 lb  
calves 1375.00-1700.00 per pair

REPLACEMENT COWS:  
Medium and Large 1-2 2 yrs to  
short solid 1075-1465 lbs 2nd to  
3rd stage 1050.00-1310.00

**EAST CENTRAL MISSOURI WEEKLY SUMMARY**

(Bowling Green, Kingdom City, Macon, Boonville)

Receipts: 6832 Week ago: 4738 Year ago: 6102

Compared to last week, feeder steers and heifers firm to 5.00 higher. Slaughter cows firm to 3.00 higher.

FEEDER STEERS:

Medium and Large 1

400-500 lbs.	175.00-188.00
500-600 lbs.	158.50-181.00
600-700 lbs.	146.00-164.50
700-800 lbs.	133.00-154.00
800-900 lbs.	130.50-136.00

FEEDER HEIFERS:

Medium and Large 1

400-500 lbs.	145.00-160.00
500-600 lbs.	143.00-157.00
600-700 lbs.	130.00-145.00
700-800 lbs.	124.00-132.25
Pot load 808 lbs.	127.30

SLAUGHTER STEERS and  
HEIFERS: High Choice 3-4  
1125-1550 lbs 133.25-135.50.  
Select and Choice 1-2 125.00-  
129.50

SLAUGHTER COWS: Breaking  
and Boning, (70-85% lean) Average  
dressing 65.00-72.50, high  
dressing 72.50-78.00, Lean (85-  
90%) 59.00-68.00

REPLACEMENT COWS: Scarce

SLAUGHTER BULLS: Yield  
Grade 1-2 1200-2550 lbs 88.50-  
98.50, hi dressing 100.00-110.00

**NORTHEAST MISSOURI WEEKLY SUMMARY**

(Palmyra, Unionville, Green City, New Cambria)

Feeder Cattle Receipts: 2884 Week ago: 2390 Year ago: 3217

Slaughter Cattle Receipts: 54 Week ago: 29 Year ago: 0

Compared to last week feeders steady to 5.00 lower. Slaughter cows 2.00 to 5.00 higher. Slaughter steers and heifers steady to 1.00 higher.

FEEDER STEERS:

Medium and Large 1

400-500 lbs.	170.50-192.00
500-600 lbs.	160.50-180.00
600-700 lbs.	145.75-161.00
700-800 lbs.	135.10-148.50
800-900 lbs.	123.00-126.50

FEEDER HEIFERS:

Medium and Large 1

400-500 lbs.	145.00-168.50
500-600 lbs.	133.00-156.00
600-700 lbs.	127.50-140.50
Lot 712 lbs.	131.50
Pkg 821 lbs.	117.50

SLAUGHTER STEERS:  
Choice 2-3 1200-1475 lbs 133.75  
-136.00

SLAUGHTER COWS: Breaking  
and Boning (75-85% lean) 67.00-  
75.00, high dressing 73.75-83.50.  
Lean (85-90%) 64.00-70.75

SLAUGHTER HEIFERS:  
Choice 2-3 1050-1250 lbs 134.00  
-135.25

SLAUGHTER BULLS: Yield  
Grade 1-2 1400-2200 lbs 91.50-  
99.50, few high dressing 101.25-  
109.50

COW & CALF PAIRS: Scarce

REPLACEMENT COWS:  
Scarce

**SOUTHEAST MISSOURI WEEKLY SUMMARY**

(Farmington, Patton)

Receipts: 2104 Week ago: 2736 Year ago: 1964

Compared to a week ago, feeders steady to 7.00 higher. Slaughter cows 1.00 higher. Slaughter bulls 5.00 higher.

FEEDER STEERS:

Medium and Large 1

300-400 lbs.	161.00-185.00
400-500 lbs.	152.00-177.00
500-600 lbs.	143.00-170.00
600-700 lbs.	130.00-158.50
700-800 lbs.	121.00-133.00

FEEDER HEIFERS:

Medium and Large 1

300-400 lbs.	143.50-169.00
400-500 lbs.	134.00-154.50
500-550 lbs.	124.00-145.00
600-700 lbs.	124.00-135.00
700-800 lbs.	118.50-125.00

REPLACEMENT COWS: Medium  
and Large 1-2 4 yrs to short solid  
820-1660 lbs 2nd to 3rd stage  
900.00-1300.00 per head

SLAUGHTER COWS: Breaking  
and Boning (75-85% lean) 56.00  
-67.50 Lean (85-90% lean) 45.50  
-59.00

COW & CALF PAIRS: Medium  
and Large 1-2 4-7 yrs 870-1150 lbs  
with 170-240 lb calves 1250.00-  
1890.00 per pair

SLAUGHTER BULLS: Yield  
Grade 1-2 few 1255-2420 lbs  
79.00-90.00, high dressing 90.50  
-98.00

**SOUTH CENTRAL MISSOURI WEEKLY SUMMARY**

(Cuba, Vienna)

Receipts: 2351 Week ago: 3100 Year ago: 1960

Compared to last week, feeders steady to 5.00 higher, except several heifers near 500 lbs 2.00 to 5.00 lower. Slaughter cows steady to 2.00 higher.

FEEDER STEERS:

Medium and Large 1

300-400 lbs.	183.00-203.00
400-500 lbs.	164.50-190.00
500-600 lbs.	154.00-180.50
600-700 lbs.	137.50-150.00
700-800 lbs.	129.75-134.00

FEEDER HEIFERS:

Medium and Large 1

300-400 lbs.	156.00-181.00
400-500 lbs.	143.00-160.50
500-600 lbs.	131.00-150.00
600-700 lbs.	123.50-138.50

REPLACEMENT COWS: Medium  
and Large 1-2 4 yrs to short and solid  
1050-1375 lbs 2nd to 3rd stage  
1050.00-1550.00 per head

SLAUGHTER COWS: Break-  
ing and Boning (70-85% lean)  
63.50-71.50, high dressing 72.00  
-74.00. Lean (85-90%) 60.00-  
68.75

COW & CALF PAIRS: Medium and  
Large 1-2 4-7 yrs 1050-1375 lbs  
rebred 1st to 2nd stage with 275-425  
lb calves 1625.00-1975.00 per pair

SLAUGHTER BULLS: Yield  
Grade 1-2 1400-2000 lbs 88.00-  
98.00, high dressing 101.75-  
104.50

**NORTHWEST MISSOURI WEEKLY SUMMARY**

(St Joseph)

Receipts: 1572 Weeks ago: 3946 Year ago: 2992

Compared to last week, feeders under 600 lbs steady to 3.00 higher, over 600 lbs 1.00 to 5.00 lower. Slaughter cows mostly steady. Slaughter bulls mostly steady, spots 2.00 higher on high dressing bulls.

FEEDER STEERS:

Medium and Large 1

400-500 lbs.	168.50-176.50
500-600 lbs.	154.00-178.00
600-700 lbs.	142.00-162.75
700-800 lbs.	128.50-149.00
800-850 lbs.	124.00-125.50

FEEDER HEIFERS:

Medium and Large 1

400-500 lbs.	143.50-160.00
500-600 lbs.	140.50-154.00
600-700 lbs.	127.00-145.50
700-800 lbs.	121.00-134.75
800-850 lbs.	119.50

SLAUGHTER BULLS:  
Yield grade 1-2 1370-2195 lbs

SLAUGHTER COWS:  
Breaking and Boning (70-85% lean)  
83.00-88.00, high dressing 88.00  
-96.00, low dressing 60.00-75.00

BRED COWS: Scarce

COW-CALF PAIRS: Scarce

**MISSOURI WEEKLY DIRECT WEANER AND FEEDER PIG REPORT**

Receipts: 5606 Weaner pigs steady to 1.00 lower. Feeder pigs no sales reported. Prices per head. Early weaned pigs 10 lb. base weights FOB the farm 0% negotiated, 1350 head, 10 lbs, 42.41. Early weaned pigs 10 lbs base weights delivered 80% negotiated, 4256 head, 10 lbs 36.79-53.00, weighted average 41.75.

**WHOLESALE FEEDSTUFFS PRICES**  
 (DOLLARS PER TON-BULK BASIS)

Area	Soybean Meal 48% Solvent	Cottonseed Meal 41% Solvent	Meat Meal	Wheat Middlings
Kansas City	294.30	255.00	241.00	110.00
St. Louis	322.50	280.00	282.50	115.00

**MISSOURI WEEKLY DIRECT**  
**SLAUGHTER CATTLE REPORT**

Weekly Receipts: 240 Week ago: 0 Year ago: 120  
Trading from last Friday through Friday morning remains light as bids are lower.

**LIVE STEERS & HEIFERS:**

No sales reported

**DRESSED STEERS & HEIFERS:**

No sales reported

**GRADE AND WEIGHT (Grid):**

3 load late last Friday 217.00. 3 loads Friday (3/31/17) morning 213.00

**By-Product Feed Prices**

Alfalfa Pellets, St. Louis MO 235.00; Corn Gluten Feed pelleted, Butler, MO FOB out; Distillers Grain Dried, FOB Carrollton, MO 105.00; Soy Hulls Kansas City, MO 130.00. Prices per ton.

**Springfield Livestock Marketing Center****Special Dairy Heifer Sale Report for 03/28/2017**

Receipts: 950 Last Month Special: 694 Year Ago: 906

Springer Heifers bred seven to nine months: Supreme 1300.00-1425.00. Approved 1000.00-1275.00. Medium 900.00- 990.00. Heifers bred three to six months: Supreme 1300.00-1450.00. Approved 1000.00-1290.00. Medium 825.00- 975.00. Common 460.00- 550.00. Heifers bred one to three months: Supreme 1220.00-1250.00. Approved 920.00-1110.00. Medium 790.00- 850.00. Open Heifers: Approved: 200-300 lbs 330.00-450.00, 300-400 lbs 470.00-580.00, 400-500 lbs 510.00-690.00, 500-600 lbs 710.00-800.00, 600-700 lbs 810.00-920.00, 700-800 lbs 840.00-970.00. Medium: 200-300 lbs 190.00-240.00, 400-500 lbs few 400.00-450.00, 500-600 lbs 620.00-670.00, 600-700 lbs 660.00-790.00. Replacement Cows: Fresh Heifers and Cows: Supreme 1400.00-1575.00, top ind 1900.00. Approved 1250.00-1350.00. Medium 800.00-1150.00. Milking Cows: Supreme 1400.00-1675.00. Medium 875.00-1125.00. Common 500.00-725.00. Bred Cows: Supreme 1375.00-1725.00. Approved 1100.00-1225.00. Medium 1025.00-1150.00. Common 600.00-925.00. Baby Calves: Holstein heifers 175.00-230.00. Holstein bulls 85.00-135.00. Jersey bulls 35.00-55.00. Crossbred heifers 120.00-190.00. Beef cross heifers few 230.00-300.00. Beef cross bulls 125.00-260.00.

**Buffalo Livestock Market Sheep and Goat Auction for 03/28/2017**

Receipts: 832 Last Month: 457 Last Year: 476

SHEEP: Feeder Lambs: Medium and Large 1 30-39 lbs 230.00-245.00. Medium and Large 1-2 Choice 2-3 19-37 lbs 215.00-226.00. Slaughter Hair Lambs: Prime 3-4 43-72 lbs 230.00-255.00; 100-115 lbs 180.00-190.00. Choice 2-3 40-78 lbs 220.00-228.00. Good and Choice 1-3 40-77 lbs 200.00-217.50. Bred Replacement Hair Ewes: Medium and Large 1 86-105 lbs 205.00-247.50. Medium and Large 1-2 85-119 lbs 170.00-190.00. Medium and Large 2 83-133 lbs 130.00-150.00. Slaughter Wool Ewes: Medium and Large 2 143-166 lbs 76.00-95.00. Slaughter Hair Ewes: Utility-Good 1-3 60-161 lbs 80.00-95.00. Replacement Hair Rams: Medium and Large 1-2 95-150 lbs 120.00-135.00. Slaughter Rams: Utility and Good 1-2 125-180 lbs 80.00-90.00. GOATS: Feeder kids: Selection 1 23-35 lbs 280.00-290.00. Selection 2 20-35 lbs 215.00-235.00. Selection 3 23-28 lbs 185.00-200.00. Slaughter Kids: Selection 1 45-58 lbs 285.00-300.00. Selection 2 40-63 lbs 267.50-280.00. Selection 3 40-71 lbs 150.00-175.00. Slaughter Does: Selection 1 113-135 lbs 130.00-135.00. Selection 2 70-103 lbs 160.00-177.50. Selection 3 60-120 lbs 120.00-140.00. Slaughter Bucks: Selection 2 70-160 lbs 140.00-160.00. Selection 3 65-130 lbs 100.00-130.00.

**WEEKLY COMMODITY GRAIN FUTURES TRENDS**

Compared to last Friday: Soybeans .23 to .29 lower, Wheat .01 lower to .02 higher, Corn .08 to .09 higher, Kansas City Wheat .04 to .08 lower, Soybean Meal 9.30 to 9.80 lower.

**Daily Grain Futures Closes**

	Mon.	Tues.	Wed.	Thu.	Fri.
Soybeans					
May	971 1/2	972	969	963	946
Jul	981 3/4	982 1/4	979 1/2	973 1/4	957
Aug	983 3/4	984 1/4	981 1/2	975 1/4	959 1/2
Sep	976 1/2	977	973 1/2	968 1/4	956 1/2
Nov	971	972 1/4	968	963 1/4	954
Wheat					
May	420 3/4	424 1/2	425 1/2	421	426 1/2
Jul	434 3/4	437 1/2	438 1/2	434	439
Sep	450	452 1/2	453 3/4	449 1/4	453 1/2
Dec	469 3/4	472 1/2	473 3/4	469 1/2	473 3/4
Mar	484 1/4	487 1/4	488 1/2	484 1/2	488 1/2
Corn					
May	355 3/4	357 3/4	358 1/2	357 1/2	364 1/4
Jul	363 1/2	365 1/2	366	365	371 3/4
Sep	371 1/4	373 1/4	373 1/4	372 1/4	379 1/4
Dec	380	381 3/4	382	381	388 1/4
Mar	389 3/4	391	391 1/2	390 1/4	397 1/4
KC Wheat					
May	421 1/4	424	423 1/2	417 1/4	420 1/2
Jul	434 1/4	437	436 1/2	430 1/4	433 3/4
Sep	449 1/4	452	451 1/2	445 1/2	449 1/2
Dec	471 1/2	474	474 1/4	469	473 1/4
Mar	487 1/4	489 3/4	490 1/4	485 1/4	489 1/4
SB Meal					
May	315.30	315.30	315.80	314.90	308.40
Jul	318.60	318.80	319.20	318.30	311.80
Aug	319.30	319.30	319.50	318.50	312.30
Sep	319.10	319.10	319.10	317.90	312.40
Oct	317.50	317.50	317.20	316.20	311.40

**WEEKLY COMMODITY FUTURES TRENDS**

Compared to last week: Live Cattle .57 to 2.15 lower, Lean Hogs 1.60 to 2.37 lower, Feeder Cattle .05 to 2.97 lower, except Mar .58 higher.

**Daily Futures Closes**

	Mon.	Tues.	Wed.	Thu.	Fri.
Cattle					
Apr	121.07	120.77	121.35	120.00	119.95
Jun	111.45	111.60	111.85	110.87	110.87
Aug	106.77	107.12	107.55	106.72	106.75
Oct	106.40	106.72	107.22	106.55	106.63
Dec	107.17	107.62	108.00	107.27	107.35
Lean Hogs					
Apr	65.65	65.10	65.30	65.62	65.67
May	70.32	69.40	69.47	70.50	69.85
Jun	73.52	72.45	72.75	74.25	73.85
Jul	74.00	73.15	73.10	74.37	74.02
Aug	74.15	73.30	73.00	74.05	73.75
Fdr Cat					
Mar	132.15	132.35	133.30	132.67	133.95
Apr	133.10	132.95	134.40	132.55	132.70
May	131.32	131.60	133.22	131.42	133.75
Aug	133.10	133.55	134.85	132.85	133.10
Sep	132.60	132.92	134.30	132.35	131.80
Milk					
Mar	15.83	15.83	15.83	15.82	15.83
Apr	15.00	15.22	15.19	15.33	15.34
May	15.29	15.59	15.63	15.90	15.74

**INTERIOR MISSOURI DIRECT HOGS**

Weekly Receipts: 2348 Week ago: 2737 Year ago: 2157  
Compared to last week, barrows and gilts 4.00 to 5.00 lower. Sows 4.00 to 8.00 higher.

**BARROWS AND GILTS:**

Base carcass meat price 54.00-58.00. weekly top Mon 61.00

**SOWS:**

300-500 lbs. 30.00-38.00  
Over 500 lbs. 34.00-42.00

WEEKLY MARKET SUMMARY  
(USPS 597250)  
To be published weekly by the  
Missouri Department of Agriculture  
1616 Missouri Blvd.  
Jefferson City, MO 65109

Postmaster: Send address changes to:  
Missouri Department of Agriculture  
P.O. Box 630  
Jefferson City, MO 65102

Periodicals postage paid at  
Jefferson City, Missouri

**Market News Hotline**  
**1-573-522-9244**

**March 31, 2017**

#### MISSOURI GRAIN WEEKLY TRENDS

Weekly Trends: Soybeans .27 to .30 lower, Soft Wheat .01 to .03 higher, Corn .10 to .13 higher, Sorghum .14 higher.

Area	#1 Soy-beans	#2 Soft Wheat	#2 Corn	#2 Grain Sorghum
<u>Kansas City</u>				
Friday**	9.35-9.36	3.80	3.19-3.36	5.46
Monday	9.07-9.31	3.31-3.76	3.18-3.36	5.46
Tuesday	9.07-9.32	3.35-3.79	3.23-3.43	5.50
Wednesday	9.04-9.29	3.35-3.80	3.23-3.43	5.50
Thursday	9.13-9.23	3.61-3.76	3.22-3.42	5.48
Friday	8.96-9.06	3.66-3.81	3.29-3.49	5.60
<u>St. Louis</u>				
Friday**	9.71-9.72	4.04-4.27	3.63	5.28
Monday	9.67-9.70	4.00-4.23	3.62-3.63	5.26
Tuesday	9.70	4.04-4.28	3.65-3.66	5.32
Wednesday	9.67-9.68	4.05-4.29	3.66-3.67	5.32
Thursday	9.61-9.62	4.01-4.24	3.65-3.66	5.30
Friday	9.44	4.06-4.30	3.74	5.42
<u>Central</u>				
Friday**	9.06-9.15	3.34-3.35	3.16-3.26	—
Monday	9.01-9.11	3.30-3.31	3.16-3.25	—
Tuesday	9.02-9.12	3.34-3.35	3.18-3.28	—
Wednesday	9.04-9.09	3.35-3.36	3.23-3.29	—
Thursday	8.98-9.03	3.31	3.22-3.28	—
Friday	8.81-8.86	3.36-3.37	3.29-3.34	—
<u>S.E. MO</u>				
Friday**	9.64-9.72	4.37	3.53-3.64	5.96
Monday	9.60-9.66	4.32	3.52-3.63	5.98
Tuesday	9.62-9.68	4.36	3.55-3.63	6.01
Wednesday	9.57-9.65	4.37	3.56-3.64	6.03
Thursday	9.51-9.58	4.32	3.55-3.61	6.01
Friday	9.31-9.41	4.36	3.64-3.68	6.14

(PRICES PER BU. EXCEPT GR. SORG. PER CWT)  
\*NEW CROP \*\*PREVIOUS WEEK'S PRICES

#### Missouri Weekly Hay Summary Week ending 03/31/2017

Rains finally arrived and were very heavy in some of the southern areas of the state. Ponds have been filled back up and there is water standing in several fields. The Drought rating of D1 or worse improved by over 20 percent this week and will likely see more improvement with next week's report. The feeding season is quickly wrapping up as grass is growing and cattle would rather chase that than eat hay. Many farmers did manage to get fertilizer spread before rains came and even some corn planting done. In the next week NASS will release the first crop progress report of the year so should have some factual numbers of just how much has been done. The supply of hay is moderate, demand is light and prices are steady to weak. The Missouri Department of Agriculture has a hay directory available for both buyers and sellers. To be listed, or for a directory visit <http://mda.mo.gov/abd/haydirectory/> (All prices f.o.b. and per ton unless specified and on most recent reported sales price listed as round bales based generally on 5x6 bales with weights of approximately 1200-1500 lbs).

Supreme quality Alfalfa (RFV <185) 180.00-225.00  
Premium quality Alfalfa (RFV 170-180) 160.00-200.00  
Good quality Alfalfa (RFV 150-170) 120.00-160.00  
small squares 4.50-5.00 per bale  
Fair quality Alfalfa (RFV 130-150) 100.00-120.00

Fair to Good quality Mixed Grass hay 50.00-80.00  
small squares 2.50-3.50 per bale  
Fair quality Mixed Grass hay 15.00-25.00 per large round bale

Fair to Good quality Bromegrass 50.00-80.00

Wheat straw 3.00-6.00 per small square bale