

# Weekly Market Summary

Published by:  
**Missouri Department of Agriculture**  
**Ag Business Development Division**  
**Market News Program**



Chris Chinn, Director  
 Ken Struempfl, Division Director  
 Tony Hancock, Editor  
 agmarketnews.mo.gov  
<http://www.ams.usda.gov/marketnews.htm>

Eric R. Greitens, Governor

Volume XXXVII, Number 21 ♦ P.O. Box 630, Jefferson City, MO 65102 ♦ (573) 751-4211 ♦ Friday May 26, 2017

## MISSOURI WEEKLY FEEDER CATTLE WEIGHTED AVERAGE REPORT

Receipts: 31,279 Week ago: 34,593 Year ago: 30,681  
 Steers and Heifers Medium and Large 1 Hols. Large 3

<u>Fdr. STEERS:</u>		<u>Fdr. HEIFERS:</u>		<u>Hols. STEERS</u>	
360 lbs.	196.52	364 lbs.	167.90	315 lbs.	105.94
457 lbs.	184.64	454 lbs.	160.24	462 lbs.	96.37
546 lbs.	176.27	539 lbs.	153.62	546 lbs.	88.31
643 lbs.	162.93	640 lbs.	146.46	666 lbs.	83.41
744 lbs.	151.09	738 lbs.	137.86	841 lbs.	80.24
861 lbs.	150.46	837 lbs.	132.75	954 lbs.	84.49
953 lbs.	136.23	930 lbs.	130.97	1179 lbs.	68.00

## SOUTHERN MISSOURI WEEKLY SUMMARY (West Plains, Ava)

Receipts: 6714 Weeks ago: 5949 Year ago: 6073  
 Compared to last week, steers and heifers steady to 6.00 higher, spots 10.00 higher on calves early week. Slaughter cows and bulls steady.

<u>STEERS:</u> Medium and Large 1		<u>HEIFERS:</u> Medium and Large 1	
300-400 lbs.	182.50-207.00	350-400 lbs.	162.50-169.00
400-500 lbs.	177.00-193.00	400-500 lbs.	151.00-170.00
500-600 lbs.	160.00-180.50	500-600 lbs.	142.50-163.50
600-700 lbs.	155.00-176.00	600-700 lbs.	136.00-146.00
700-800 lbs.	142.50-156.50	700-800 lbs.	125.00-138.00
800-850 lbs.	144.50-152.00	850-900 lbs.	124.50-136.00
900-1000 lbs.	129.00-136.00		

<u>Holsteins:</u> Large 3		<u>SLAUGHTER COWS:</u> Breaking and Boning (70-85% lean) 64.00-72.00, high dressing 70.00-79.50, low dressing 58.00-66.00. Lean (85-90%) 55.00-66.00	
Few 400-450 lbs.	95.00-99.00		
Pkg 484 lbs.	90.00		
Lot 648 lbs.	86.00		

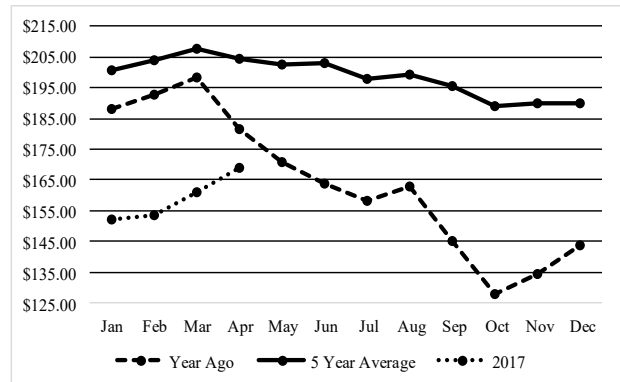
SLAUGHTER BULLS:  
 Yield Grade 1-2 1165-2315 lbs. 88.00-97.50, high dressing 99.00-109.00, low dressing 71.00-88.00

COW & CALF PAIRS:  
 Medium and Large 1-2 2-7 yrs 815-1205 lbs with 125-250 lb calves 1300.00-1750.00; short solid to broken mouth 1030-1290 lbs with 100-300 lb calves 1100.00-1175.00 per pair

REPLACEMENT COWS:  
 Medium and Large 1-2 2-6 yrs 1040-1495 lbs 2nd to 3rd stage 1025.00-1450.00, 1st stage 950.00-1125.00; 7 yrs to short solid 1195-1455 lbs 2nd to 3rd stage 950.00-1175.00 per head. Medium and Large 2 2-7 yrs 850-1180 lbs 2nd to 3rd stage 750.00-1050.00 per head

The Weekly Market Summary is available to anyone for a \$25.00 annual subscription fee. To subscribe, send your check or money order to: Weekly Market Summary, Missouri Department of Agriculture, P.O. Box 630, Jefferson City, MO 65102.

## Historical Feeder Steers Medium and Large 1 500-600 lbs. Weighted Average



\*Graph is updated the first Friday of each month.

## Year Ago Slaughter Steers and Heifers:

Northeast Missouri: Steers: Choice 2-3 1150-1350 lbs. 123.50-125.00  
 Heifers: Choice 2-3 1150-1300 lbs. 123.50-124.25

East Central Missouri: Select and Choice 2-3 1100-1450 lbs. 123.00-126.00

## SOUTHWEST MISSOURI WEEKLY SUMMARY (Joplin and Springfield)

Feeder Cattle Receipts: 8213 Week ago: 9127 Year ago: 7424  
 Cow and Bull Receipts: 3076 Week ago: 1535 Year ago: 1037  
 Compared to last week, feeders unevenly steady to 10.00 higher, with the advance late week. Slaughter cows steady to 1.00 lower. Slaughter bulls steady to 2.00 lower with the decline at the last part of the week.

<u>STEERS:</u> Medium and Large 1		<u>HEIFERS:</u> Medium and Large 1	
Pkg. 355 lbs.	205.00	300-400 lbs.	162.00-175.00
400-500 lbs.	172.00-199.00	400-500 lbs.	148.50-168.00
500-600 lbs.	162.00-194.00	500-600 lbs.	143.00-155.00
600-700 lbs.	152.00-173.00	600-700 lbs.	135.00-156.00
700-800 lbs.	144.50-150.00	700-800 lbs.	133.00-141.75
Load 902 lbs.	137.00	800-900 lbs.	130.50-134.85

<u>HOLSTEINS:</u> Large 3		<u>SLAUGHTER COWS:</u> Breaking and Boning (70-85% lean) 63.00-73.00, high dressing 68.00-81.00. Lean (85-90%) 53.00-66.50	
300-350 lbs.	100.00-105.00		
400-500 lbs.	90.00-104.00		
500-600 lbs.	80.00-103.00		
650-700 lbs.	80.00-85.00		
800-900 lbs.	80.00-85.50		
Pkg. 959 lbs.	83.50		

REPLACEMENT COWS: Medium and Large 1-2 2 yrs to short solid 2nd to 3rd stage 945-1450 lbs 1050.00-1525.00; few outstanding 1500.00-1700.00 per head

COW & CALF PAIRS: Medium and Large 1-2 2-7 yrs 850-1365 lbs with babies to 350 lb calves a few rebred most 1475.00-1850.00 per pair

**WEST CENTRAL MISSOURI WEEKLY SUMMARY**

(Sedalia, Kingsville, Butler)

Receipts: 4302 Week Ago: 3871 Year ago: 3954

Compared to last week, feeders steady to 5.00 higher. Slaughter cows steady to 2.00 higher.

FEEDER STEERS:  
Medium and Large 1

400-500 lbs.	171.00-194.00
500-600 lbs.	161.50-193.50
600-700 lbs.	151.50-174.00
700-800 lbs.	148.75-162.00
800-900 lbs.	139.00-158.85

FEEDER HEIFERS:  
Medium and Large 1

300-400 lbs.	160.00-185.50
400-500 lbs.	152.00-169.00
500-600 lbs.	142.00-162.00
600-700 lbs.	136.00-158.75
700-800 lbs.	131.00-138.75

SLAUGHTER BULLS: Yield Grade 1-2 1285-2190 lbs 86.00-98.00, high dressing 99.00-106.00, low dressing 78.00-85.50SLAUGHTER COWS: Breaking and Boning (70-85% lean) 62.00-72.00. Lean (85-90%) 55.00-65.50COW & CALF PAIRS: ScarceREPLACEMENT COWS: Medium and Large 1-2 2 yrs to short and solid 1150-1340 lbs 2nd to 3rd stage 975.00-1335.00 per head**EAST CENTRAL MISSOURI WEEKLY SUMMARY**

(Bowling Green, Kingdom City, Macon, Boonville)

Receipts: 5130 Week ago: 5798 Year ago: 6181

Compared to last week, feeders steady to firm, spots 2.00 to 5.00 higher on heifer calves. Slaughter cows steady to firm.

FEEDER STEERS:  
Medium and Large 1

400-500 lbs.	186.00-214.00
500-600 lbs.	170.00-190.00
600-700 lbs.	157.00-170.00
700-800 lbs.	149.00-163.00
950-1000 lbs.	136.75-138.00

FEEDER HEIFERS:  
Medium and Large 1

300-400 lbs.	165.00-187.00
400-500 lbs.	157.00-177.00
500-600 lbs.	149.00-166.00
600-700 lbs.	145.00-161.00
700-800 lbs.	135.50-140.75

SLAUGHTER STEERS and HEIFERS: Choice 2-3 1050-1400 lbs 131.50-135.00. Select and Choice 1-2 1050-1600 lbs 123.50-131.50SLAUGHTER COWS: Breaking and Boning, (70-85% lean) Average dressing 65.00-72.00, high dressing 70.00-79.50, Lean (85-90%) 62.00-70.00REPLACEMENT COWS: Medium and Large 1 1050-1215 lbs 2nd stage 1725.00-2050.00 per headSLAUGHTER BULLS: Yield Grade 1-2 1200-2550 87.50-99.00, high dressing 99.00-106.50, low dressing 77.50-86.50**NORTHEAST MISSOURI WEEKLY SUMMARY**

(Palmyra, Unionville, Green City, New Cambria)

Feeder Cattle Receipts: 2407 Week ago: 3952 Year ago: 1814

Slaughter Cattle Receipts: 29 Week ago: 20 Year ago: 91

Compared to last week, feeders unevenly steady. Slaughter cows steady. Slaughter steers and heifers 3.00 to 4.00 lower.

FEEDER STEERS:  
Medium and Large 1

300-400 lbs.	210.00-226.00
400-500 lbs.	188.50-223.00
500-600 lbs.	173.00-193.50
600-700 lbs.	155.00-172.00
700-800 lbs.	145.75-163.50
850-900 lbs.	145.00-163.50

FEEDER HEIFERS:  
Medium and Large 1

300-400 lbs.	174.00-187.00
400-500 lbs.	150.00-177.00
500-600 lbs.	147.00-164.00
600-700 lbs.	147.00-162.50
Pkg 713 lbs.	156.50

SLAUGHTER STEERS: Choice 2-3 1300-1425 lbs 133.25-136.50SLAUGHTER COWS: Breaking and Boning (75-85% lean) 67.00-74.50, high dressing 74.00-87.00. Lean (85-90%) 63.50-70.00SLAUGHTER HEIFERS: Choice 2-3 1350-1425 lbs 132.50-135.00SLAUGHTER BULLS: Yield Grade 1-2 1350-2300 lbs 93.00-101.00, high dressing 102.00-105.00COW & CALF PAIRS: ScarceREPLACEMENT COWS: Scarce**SOUTHEAST MISSOURI WEEKLY SUMMARY**

(Farmington, Patton)

Receipts: 2172 Week ago: 1994 Year ago: 1858

Compared to a week ago, feeders 4.00 to 11.00 higher. Slaughter cows 1.00 lower. Slaughter bulls steady.

FEEDER STEERS:  
Medium and Large 1

300-400 lbs.	165.00-212.00
400-500 lbs.	160.00-197.00
500-600 lbs.	150.00-177.50
600-700 lbs.	140.00-169.00
700-800 lbs.	140.00-146.00

FEEDER HEIFERS:  
Medium and Large 1

300-400 lbs.	148.00-172.00
400-500 lbs.	139.00-169.50
500-600 lbs.	135.00-154.00
600-700 lbs.	128.00-151.00
700-750 lbs.	125.00-130.00

REPLACEMENT COWS: Medium and Large 1-2 3 yrs to short solid 783-1260 lbs 2nd to 3rd stage 700.00-1330.00 per headSLAUGHTER COWS: Breaking and Boning (75-85% lean) 56.50-68.00. Lean (85-90% lean) 51.50-57.50COW & CALF PAIRS: Medium and Large 1-2 3 yrs to short solid 920-1240 lbs with 120-275 lb calves 1000.00-1740.00 per pairSLAUGHTER BULLS: Yield Grade 1-2 1220-2277 lbs 80.00-88.50, high dressing 90.50-106.00**SOUTH CENTRAL MISSOURI WEEKLY SUMMARY**

(Cuba, Vienna)

Receipts: 2404 Week ago: 3322 Year ago: 2895

Compared to last week, steers steady to 3.00 lower. Heifers steady to 10.00 lower. Slaughter cows steady.

FEEDER STEERS:  
Medium and Large 1

400-500 lbs.	173.00-195.00
500-600 lbs.	167.00-185.00
600-700 lbs.	158.25-179.25
700-800 lbs.	148.00-155.25

FEEDER HEIFERS:  
Medium and Large 1

300-400 lbs.	160.00-174.00
400-500 lbs.	150.00-165.50
500-600 lbs.	142.00-151.00
600-700 lbs.	138.00-147.50
Pkg 786 lbs.	131.75

REPLACEMENT COWS: Medium and Large 1-2 3-7 yrs 1025-1400 lbs 1st to 3rd stage 950.00-1400.00 per headSLAUGHTER COWS: Breaking and Boning (70-85% lean) 62.00-70.00. Lean (85-90%) 57.50-67.00COW & CALF PAIRS: Medium and Large 1-2 few 4-6 yrs 1000-1225 lbs with 175-275 lb calves 1635.00-1660.00 per pairSLAUGHTER BULLS: Yield Grade 1-2 1600-2250 lbs 88.25-98.00, high dressing 100.00-107.50, low dressing 87.00**NORTHWEST MISSOURI WEEKLY SUMMARY**

(St Joseph)

Receipts: 1267 Weeks ago: 2298 Year ago: 1752

Compared to last week, feeders 1.00 to 5.00 higher, spots 8.00 higher. Slaughter cows steady, instances 2.00 higher. Slaughter bulls steady to 3.00 higher.

FEEDER STEERS:  
Medium and Large 1

400-500 lbs.	181.00-200.00
500-600 lbs.	173.00-187.00
600-700 lbs.	158.75-168.00
700-800 lbs.	138.00-157.00
800-900 lbs.	130.00-139.00

FEEDER HEIFERS:  
Medium and Large 1

300-400 lbs.	175.00-183.00
400-500 lbs.	153.00-166.00
500-600 lbs.	148.00-160.25
600-700 lbs.	143.00-159.50
700-800 lbs.	129.00-137.00

SLAUGHTER BULLS: Yield grade 1-2 1350-2085 lbs 87.00-100.00, high dressing 103.00-113.00, low dressing 75.00-85.00SLAUGHTER COWS: Breaking and Boning (70-85% lean) 63.00-71.50, high dressing 72.00-77.00. Lean (85-90%) 60.00-65.00BRED COWS: Medium and Large 1-2 few 6 yrs 1020-1260 lbs 2nd stage 1000.00-1175.00; 7 yrs to short solid 1020-1410 lbs 2nd stage 1000.00-1050.00 per headCOW-CALF PAIRS: Medium and Large 1-2 few short solid 1200 lbs with 150-200 lb calves 1010.00 per pair

**MISSOURI WEEKLY DIRECT WEANER AND FEEDER PIG REPORT**

Receipts: 11,665 Weaner pigs steady to firm. Feeder pigs no recent sales reported for comparison. Prices per head. Early weaned pigs 10 lb. base weights FOB the farm 0% negotiated, 4620 head, 10 lbs, 34.24-37.17. Early weaned pigs 10 lbs base weights delivered 90% negotiated, 6745 head, 10 lbs 25.00-33.00, weighted average 31.48. Feeder pigs in all lot sizes, delivered 100% negotiated, 300 head, 40 lbs, 52.00.

**WHOLESALE FEEDSTUFFS PRICES  
(DOLLARS PER TON-BULK BASIS)**

Area	Soybean Meal 48% Solvent	Cottonseed Meal 41% Solvent	Meat Meal	Wheat Middlings
Kansas City	287.80	217.50	222.50	65.00
St. Louis	314.00	220.00	237.50	69.00

**MISSOURI WEEKLY DIRECT  
SLAUGHTER CATTLE REPORT**

Weekly Receipts: 0 Week ago: 40 Year ago: 120  
Trading from last Friday through Friday morning remains inactive as bids and asking prices are lower.

**LIVE STEERS & HEIFERS:**  
No sales

**DRESSED STEERS & HEIFERS:**  
No sales

**GRADE AND WEIGHT (Grid):**  
No sales

**By-Product Feed Prices**

Alfalfa Pellets, St. Louis MO 235.00; Corn Gluten Feed pelleted, Butler, MO FOB out; Distillers Grain Dried, FOB Carrollton, MO 100.00; Soy Hulls Kansas City, MO 95.00. Prices per ton.

**Springfield Livestock Marketing Center  
Special Dairy Heifer Sale Report for 05/23/2017**

Receipts: 690 Last Month Special: 738 Year Ago: 440  
Springer Heifers bred seven to nine months: Supreme 1210.00-1390.00, few crossbreds 1185.00-1285.00. Approved 975.00-1125.00. Heifers bred three to six months: Supreme 1210.00-1485.00. Approved 1000.00-1175.00, crossbreds 1000.00-1150.00. Medium 800.00-985.00. Common 575.00- 660.00. Heifers bred one to three months: Supreme 1060.00-1250.00. Approved 975.00-1075.00. Medium 800.00-975.00. Common few 300.00-685.00, ind crossbred 550.00. Open Heifers: Approved: 185-300 lbs 260.00-530.00; 300-400 lbs 310.00-570.00; 400-500 lbs 500.00-650.00, Jerseys 520.00-580.00, crossbreds 490.00-620.00; 500-600 lbs 660.00-790.00; 600-700 lbs 720.00-750.00; 700-800 lbs 850.00-1030.00, crossbreds 700.00-920.00. Replacement Cows: Fresh and Milking Cows: Approved 1100.00-1200.00. Medium 900.00-985.00. Common 480.00- 700.00. Springer Cows: Approved 1250.00-1275.00. Medium 825.00- 900.00, few crossbreds 835.00-1010.00. Bred Cows: Approved-1100.00-1275.00, few Jerseys 1100.00-1150.00. Medium 925.00-1075.00. Common 685.00-800.00. Baby Calves: Holstein heifers 160.00-260.00. Holstein bulls 140.00-190.00. Crossbred heifers 180.00-260.00. Crossbred bulls 180.00-250.00, small 110.00-125.00.

**Buffalo Livestock Market - Sheep and Goat Auction for 05/23/2017**

Receipts: 610 Last Month: 1065 Last Year: 1124  
SHEEP: Feeder Lambs: Medium and Large 1-2 37-38 lbs 160.00-170.00. Slaughter Hair Lambs: Prime 2-3 52-105 lbs 180.00-215.00. Choice 1-2 40-78 lbs 160.00-175.00. Good 3-4 47-64 lbs 150.00-155.00. Bred Replacement Hair Ewes: Medium and Large 2-3 97-135 lbs 120.00-150.00. Medium and Large 2-3 60-129 lbs 110.00-117.50. Slaughter Wool Ewes: Utility-Good 3-4 151-285 lbs 40.00-67.00. Slaughter Hair Ewes: Utility-Good 2-3 85-225 lbs 50.00-57.50. Feeder Kids: Medium and Large 1 27-38 lbs 220.00-240.00. Medium and Large 2 27-35 lbs 205.00-215.00. Medium and Large 3 22-38 lbs 145.00-170.00. Bottle Babies 27.00-39.00 Per Head. Slaughter Kids: Selection 1 46-65 lbs 285.00-310.00. Selection 2 40-60 lbs 230.00-250.00; 53-113 lbs 140.00-180.00. Selection 3 38-48 lbs 105.00-110.00. Slaughter Does: Selection 1 100-138 lbs 140.00-180.00. Selection 2 67-135 lbs 110.00-132.50. Slaughter Bucks: Selection 1 95-160 lbs 140.00-157.50. Selection 2 110-170 lbs 130.00-135.00. Selection 3 40-100 lbs 100.00-110.00.

**WEEKLY COMMODITY GRAIN FUTURES TRENDS**

Compared to last Friday: Soybeans .23 to .28 lower, Wheat .02 to .04 higher, Corn .01 to .03 higher, Kansas City Wheat unchanged to .01 lower, Soybean Meal 4.40 to 5.70 lower.

**Daily Grain Futures Closes**

	Mon.	Tues.	Wed.	Thu.	Fri.
Soybeans					
Jul	956 1/2	948 1/4	948 1/4	939 1/2	925 3/4
Aug	958 1/4	950 1/4	950 1/4	941 1/2	928 3/4
Sep	956	948	947 3/4	938 3/4	927 1/4
Nov	956 1/4	948 1/2	948	939 1/4	928 1/2
Jan	963 1/4	955 3/4	955 1/4	946 3/4	936 1/4
Wheat					
Jul	434 1/4	429 1/2	432 1/2	430 3/4	437 3/4
Sep	448	444	446	444 1/4	451 1/4
Dec	469 3/4	466 1/4	467 3/4	466 1/2	473 1/4
Mar	487 3/4	485	486	485	491 1/4
May	499 1/4	497 1/2	498 1/2	497 1/2	503 3/4
Corn					
Jul	375	369 1/2	371 1/4	369 1/4	373 1/2
Sep	382 1/2	377	379	377	381
Dec	392 3/4	387 3/4	389 3/4	387 1/2	391 1/2
Mar	402 1/2	397 1/2	399 1/4	397 1/2	402
May	408	403 3/4	405 1/4	403 1/2	408
KC Wheat					
Jul	436	430 1/2	432 3/4	431 1/4	437 1/4
Sep	453	448 1/4	450 1/2	449	454 3/4
Dec	478 1/2	474	475 3/4	474 1/4	479 3/4
Mar	493 1/2	489 3/4	491 1/4	489 1/2	495
May	503 3/4	500 1/4	501 1/2	499 3/4	505
SB Meal					
Jul	307.80	306.30	306.40	304.70	301.30
Aug	309.00	307.50	307.60	305.80	302.50
Sep	310.30	308.80	308.90	307.00	303.90
Oct	310.40	309.20	309.20	307.00	304.40
Dec	312.10	311.10	311.00	308.60	306.00

**WEEKLY COMMODITY FUTURES TRENDS**

Compared to last week: Live Cattle .50 to 2.10 lower, Lean Hogs .17 to 2.32 higher, Feeder Cattle 2.53 to 3.50 lower.

**Daily Futures Closes**

	Mon.	Tues.	Wed.	Thu.	Fri.
Cattle					
Jun	123.92	123.07	122.12	123.92	122.70
Aug	122.02	121.32	119.92	121.40	118.95
Oct	118.40	118.05	116.75	117.95	115.10
Dec	118.62	118.45	117.22	118.47	115.95
Feb	118.57	118.35	117.37	118.65	116.60
Lean Hogs					
Jun	79.35	80.15	80.20	80.95	81.82
Jul	80.05	80.02	79.85	80.57	81.90
Aug	79.67	79.90	79.85	80.55	81.30
Oct	67.92	68.00	67.57	68.02	68.22
Dev	62.12	62.35	61.82	62.15	62.17
Fdr Cat					
May	144.25	144.25	144.00	143.52	—
Aug	152.77	151.50	148.67	151.12	146.95
Sep	152.65	151.67	148.82	150.97	146.75
Oct	151.50	150.57	147.95	150.05	145.77
Nov	149.40	148.75	146.57	148.57	144.27
Milk					
May	15.60	15.60	15.62	15.61	15.61
Jun	16.29	16.22	16.34	16.60	16.51
Jul	16.76	16.71	16.83	17.21	17.05

**INTERIOR MISSOURI DIRECT HOGS**

Weekly Receipts: 2015 Week ago: 1924 Year ago: 2285  
Compared to last week, barrows and gilts 2.00 lower to 3.00 higher. Sows steady to 1.00 lower

**BARROWS AND GILTS:**

Base carcass meat price 64.00-66.00. weekly top Fri 66.00

**SOWS:**

300-500 lbs. 38.00-45.00  
Over 500 lbs. 43.00-49.00

**Market News Hotline**  
**1-573-522-9244**

**May 26, 2017**

**MISSOURI GRAIN WEEKLY TRENDS**

Weekly Trends: Soybeans .27 to .28 lower, Soft Wheat .03 to .08 higher, Corn .05 lower to .02 higher, Sorghum .02 to .04 higher.

Area	#1 Soy-beans	#2 Soft Wheat	#2 Corn	#2 Grain Sorghum
<b>Kansas City</b>				
Friday**	9.13-9.33	3.85-4.02	3.32-3.62	5.75-6.01
Monday	9.17-9.36	3.84-4.01	3.35-3.65	5.80-6.07
Tuesday	9.08-9.28	3.79-4.01	3.29-3.59	5.69-5.96
Wednesday	9.08-9.28	3.83-4.04	3.31-3.61	5.73-6.00
Thursday	9.00-9.19	3.81-4.03	3.29-3.59	5.69-5.96
Friday	8.86-9.06	3.89-4.10	3.34-3.64	5.78-6.05
<b>St. Louis</b>				
Friday**	9.60-9.61	4.00-4.46	3.84	5.58
Monday	9.63-9.65	3.99-4.46	3.82-3.85	5.62
Tuesday	9.56	3.94-4.42	3.79	5.51
Wednesday	9.56	3.97-4.44	3.78-3.80	5.55
Thursday	9.48	3.95-4.42	3.76-3.77	5.51
Friday	9.32-9.34	4.03-4.49	3.79	5.60
<b>Central</b>				
Friday**	9.08-9.13	3.85*	3.37-3.41	—
Monday	9.12-9.17	3.84*	3.40-3.43	—
Tuesday	9.03-9.08	3.79-3.80*	3.34-3.38	—
Wednesday	9.08-9.13	3.82-3.83*	3.36-3.39	—
Thursday	8.99-9.05	3.80-3.81*	3.34-3.37	—
Friday	8.86-8.92	3.88*	3.39-3.42	—
<b>S.E. MO</b>				
Friday**	9.51-9.53	4.39-4.50*	3.68-3.73	—
Monday	9.56-9.58	4.46-4.52*	3.75-3.79	—
Tuesday	9.46-9.50	4.34-4.47*	3.69-3.73	—
Wednesday	9.47-9.50	4.42-4.50*	3.72-3.75	—
Thursday	9.39-9.41	4.43-4.48*	3.70-3.73	—
Friday	9.24-9.34	4.43-4.66*	3.70-3.76	—

**Missouri Crop Progress and Condition Report**  
 (05/22/2017)

Warm weather and above average precipitation were prevalent across the state for the week ending May 21. Temperatures averaged 68.7 degrees, 3.0 degrees above normal. Precipitation averaged 2.09 inches statewide, 1.07 inches above normal. There were 4.0 days suitable for fieldwork. Topsoil moisture supply was rated 3 percent short, 70 percent adequate, and 27 percent surplus. Subsoil moisture supply was rated 3 percent short, 74 percent adequate, and 23 percent surplus. Corn planting was 93 percent complete, 4 percentage points behind the previous year but 3 percentage points ahead of the 5-year average. Corn emerged progressed to 79 percent. Corn condition was rated 3 percent very poor, 8 percent poor, 37 percent fair, 44 percent good, and 8 percent excellent. Soybean planting was 42 percent complete. Soybean emerged progressed to 20 percent. Cotton planting was 68 percent complete. Rice planting progressed to 92 percent complete. Rice emerged progressed to 81 percent. Rice condition was 1 percent very poor, 7 percent poor, 24 percent fair, 47 percent good, and 21 percent excellent. Sorghum planting was 30 percent complete. Winter wheat headed reached 97 percent. Winter wheat condition was rated 1 percent very poor, 8 percent poor, 30 percent fair, 54 percent good, and 7 percent excellent. Pasture and range condition was rated 22 percent fair, 69 percent good, and 9 percent excellent.

(PRICES PER BU. EXCEPT GR. SORG. PER CWT)  
 \*NEW CROP \*\*PREVIOUS WEEK'S PRICES