

Weekly Market Summary

Published by:
Missouri Department of Agriculture
Ag Business Development Division
Market News Program



Chris Chinn, Director
Ken Struempfler, Division Director
Tony Hancock, Editor
agmarketnews.mo.gov
<http://www.ams.usda.gov/marketnews.htm>

Eric R. Greitens, Governor

Volume XXXVII, Number 28 ♦ P.O. Box 630, Jefferson City, MO 65102 ♦ (573) 751-4211 ♦ Friday July 14, 2017

MISSOURI WEEKLY FEEDER CATTLE WEIGHTED AVERAGE REPORT

Receipts: 22,661 Week ago: 4192 Year ago: 27,221
Steers and Heifers Medium and Large 1 Hols. Large 3

Fdr. STEERS:		Fdr. HEIFERS:		Hols. STEERS	
346 lbs.	181.50	269 lbs.	173.81	378 lbs.	91.68
458 lbs.	170.42	362 lbs.	160.09	465 lbs.	95.00
556 lbs.	161.51	453 lbs.	155.67	558 lbs.	87.86
646 lbs.	156.32	547 lbs.	147.91	657 lbs.	77.28
745 lbs.	151.90	653 lbs.	144.59	783 lbs.	92.32
843 lbs.	145.92	730 lbs.	140.54	837 lbs.	82.12
931 lbs.	139.64	831 lbs.	132.13	1058 lbs.	86.22
1022 lbs.	130.54				

SOUTHERN MISSOURI WEEKLY SUMMARY (West Plains, Ava)

Receipts: 5046 Two Weeks ago: 5845 Year ago: 6225
Compared to two weeks ago, feeders early week steady to 5.00 lower, late week steady to 3.00 higher. Slaughter cows steady to 2.00 higher. Slaughter bulls steady.

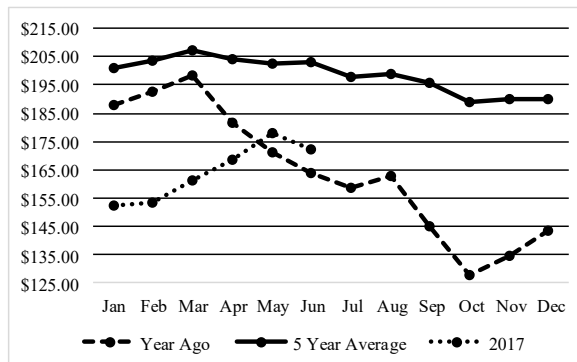
STEERS: Medium and Large 1		HEIFERS: Medium and Large 1	
300-400 lbs.	176.00-186.00	350-400 lbs.	150.00-159.00
400-500 lbs.	162.00-166.00	400-500 lbs.	140.00-155.00
500-600 lbs.	152.00-168.00	500-600 lbs.	135.00-152.50
600-700 lbs.	145.00-157.50	600-700 lbs.	131.00-144.50
700-725 lbs.	143.00-145.00	700-750 lbs.	126.00-134.00
800-900 lbs.	137.00-144.00		

Holsteins: Large 3		SLAUGHTER COWS: Breaking and Boning (70-85% lean) 69.00-76.50, high dressing 71.00-87.00, low dressing 61.50-68.00. Lean (85-90%) 62.50-70.00	
Pkg 377 lbs.	80.00		
500-550 lbs.	85.00-90.00		
Pkg 572 lbs.	79.00		
Pkg 856 lbs.	72.50		

SLAUGHTER BULLS:	REPLACEMENT COWS:
Yield Grade 1-2 1285-2100 lbs. 86.00-100.50, high dressing 101.00-105.00, low dressing 68.00-89.00	Medium and Large 1 pkg 2-4 yrs 2nd to 3rd stage 1480 lbs 1800.00 per head. Medium and Large 1-2 2-7 yrs 1050-1375 lbs 1st to 3rd stage 1100.00-1400.00 per head

COW & CALF PAIRS:
Medium and Large 1 pkg 2-4 yrs 1425 lbs with 300 lb calves 1800.00 per pair. Medium and Large 1-2 2-7 yrs 800-1300 lbs with 125-300 lb calves 1200.00-1425.00 per pair

Historical Feeder Steers Medium and Large 1 500-600 lbs. Weighted Average



*Graph is updated the first Friday of each month.

Year Ago Slaughter Steers and Heifers:

Northeast Missouri: Steers: Choice 2-3 1250-1350 lbs 120.75-122.75. Heifers: Choice 2-3 1150-1400 lbs. 121.00-122.25.

East Central Missouri: Select and Choice 2-3 1200-1415 lbs 121.50-122.50. Select 1-2 106.00-116.00.

SOUTHWEST MISSOURI WEEKLY SUMMARY (Joplin and Springfield)

Feeder Cattle Receipts: 8431 Two Weeks ago: 6081 Year ago: 7062
Cow and Bull Receipts: 1069 Two Weeks ago: 1221 Year ago: 1190
Compared to two weeks ago, feeders steady to 6.00 lower, except heifer calves under 500 lbs early week steady to 4.00 higher. Slaughter cows 1.00 to 2.00 higher. Slaughter bulls 1.00 to 3.00 lower.

STEERS: Medium and Large 1		HEIFERS: Medium and Large 1	
Few 350-400 lbs.	174.00-175.00	Few 350-400 lbs.	158.00
400-500 lbs.	157.00-180.00	400-500 lbs.	138.00-165.00
500-600 lbs.	148.00-170.00	500-600 lbs.	134.50-157.00
600-700 lbs.	141.50-159.00	600-700 lbs.	136.00-155.00
700-800 lbs.	138.50-155.00	700-800 lbs.	130.00-138.00
800-900 lbs.	140.00-147.00	Lot 863 lbs.	127.50

HOLSTEINS: Large 3	SLAUGHTER COWS: Breaking and Boning (70-85% lean) 68.50-77.50, high dressing 73.00-84.00. Lean (85-90%) 56.00-66.50
Pkg 353 lbs.	90.00
Lot 588 lbs.	90.00
600-700 lbs.	80.00-85.00
750-800 lbs.	75.00-98.50
800-900 lbs.	80.00-84.25
Load 1060 lbs.	86.85

REPLACEMENT COWS: Medium and Large 1-2 2 yrs to short solid 955-1365 lbs 2nd to 3rd stage 1100.00-1410.00, fancy 1500.00-1625.00; short solid mouth to aged 1070-1360 lbs 2nd to 3rd stage 760.00-1035.00 per head

COW & CALF PAIRS: Medium and Large 1-2 5 yrs to short solid 1095-1300 lbs with newborn to 325 lb calves 1300.00-1625.00 per pair

The Weekly Market Summary is available to anyone for a \$25.00 annual subscription fee. To subscribe, send your check or money order to: Weekly Market Summary, Missouri Department of Agriculture, P.O. Box 630, Jefferson City, MO 65102.

WEST CENTRAL MISSOURI WEEKLY SUMMARY

(Sedalia, Kingsville, Butler)

Receipts: 2495 Two Weeks ago: 2374 Year ago: 1896

Compared to two weeks ago, feeder calves steady to 5.00 lower, yearlings traded with a higher undertone. Slaughter cows uneven from 2.00 lower to 2.00 higher.

FEEDER STEERS:

Medium and Large 1

400-500 lbs. 164.50-178.00
 500-600 lbs. 158.00-175.25
 600-700 lbs. 152.00-169.50
 700-800 lbs. 146.00-167.75
 800-900 lbs. 138.00-149.25

FEEDER HEIFERS:

Medium and Large 1

400-500 lbs. 147.00-165.00
 500-600 lbs. 138.00-159.50
 600-700 lbs. 142.50-162.50
 700-800 lbs. 131.50-150.85
 800-850 lbs. 133.75-139.50

REPLACEMENT COWS: Medium and Large 1 5 yrs to short solid 1155-1260 lbs 2nd to 3rd stage 1335.00-1625.00 per head

SLAUGHTER COWS: Breaking and Boning (70-85% lean) 66.00-75.50. Lean (85-90%) 60.00-69.00

COW & CALF PAIRS: Medium and Large 1 5 yrs to short solid 1235-1425 lbs with newborn to 300 lb calves 1635.00-1850.00 per pair

SLAUGHTER BULLS: Yield Grade 1-2 1200-2570 lbs 86.50-97.50, high dressing 98.50-101.00, low dressing 78.50-85.00

EAST CENTRAL MISSOURI WEEKLY SUMMARY

(Bowling Green, Kingdom City, Macon, Boonville)

Receipts: 2884 Two Weeks ago: 4271 Year ago: 4027

Compared to two weeks ago, calves under 550 lbs lighted tested, 550-750 lbs steady to 4.00 higher, with the most advance on steers. Slaughter cows steady to 2.00 higher.

FEEDER STEERS:

Medium and Large 1

400-500 lbs. 183.00-190.00
 500-600 lbs. 164.00-179.00
 600-700 lbs. 159.00-174.50
 700-800 lbs. 148.00-162.00

FEEDER HEIFERS:

Medium and Large 1

300-400 lbs. 173.00-177.50
 400-500 lbs. 160.00-174.00
 500-600 lbs. 147.00-160.00
 600-700 lbs. 141.00-152.00
 700-800 lbs. 136.50-145.75

SLAUGHTER STEERS and HEIFERS: Select and Choice 1-2 1100-1550 lbs 115.50-120.50. Select 1-2 950-1450 lbs 108.00-114.00

SLAUGHTER COWS: Breaking and Boning, (70-85% lean) Average dressing 68.00-76.50, high dressing 73.00-84.50, Lean (85-90%) 67.00-73.00

REPLACEMENT COWS: Scarce

SLAUGHTER BULLS: Yield Grade 1-2 1200-2550 88.50-99.00, high dressing 103.50-107.00, low dressing 77.50-86.50

NORTHEAST MISSOURI WEEKLY SUMMARY

(Palmyra, Unionville, Green City, New Cambria)

Receipts: 2464 Week ago: 4192 Year ago: 2640

Slaughter Cattle Receipts: 34 Week ago: 43 Year ago: 58

No true price comparison available, undertone firm. Slaughter cows steady to 2.00 higher. Slaughter steers and heifers 4.00 to 5.00 lower. Slaughter prices week ending 6/30/17.

FEEDER STEERS:

Medium and Large 1

400-500 lbs. 185.00-191.00
 500-600 lbs. 176.00-187.00
 600-700 lbs. 160.00-175.00
 700-800 lbs. 144.75-165.25
 800-850 lbs. 143.25-162.50
 900-950 lbs. 141.00-144.25

FEEDER HEIFERS:

Medium and Large 1

400-500 lbs. 154.00-165.00
 500-550 lbs. 149.00-162.00
 600-700 lbs. 142.25-159.50
 Lot 735 lbs. 142.25

SLAUGHTER STEERS: Choice 2-3 1100-1300 lbs 121.75-122.75. Select and Choice 2-3 1000-1300 lbs 118.25-119.00

SLAUGHTER COWS: Breaking and Boning (75-85% lean) 69.00-77.00, high dressing 75.00-82.75 Lean (85-90%) 68.50-75.00

SLAUGHTER HEIFERS: Choice 2-3 1000-1100 lbs 120.00-122.50. Select 1-2 1000-1100 lbs 118.00

SLAUGHTER BULLS: Yield Grade 1-2 1500-2250 lbs 86.00-99.00, high dressing 102.00-104.00

REPLACEMENT COWS: Medium and Large 1-2 5-7 yrs 1200-1250 lbs 3rd stage 1225.00-1400.00 per head

COW & CALF PAIRS: Large 1-2 pkg 5 yrs 1200 lbs with 150 lb calves 1885.00 per pair

SOUTHEAST MISSOURI WEEKLY SUMMARY

(Farmington, Patton)

Receipts: 1704 Two Weeks ago: 1597 Year ago: 1443

Compared to two weeks ago, steers and 600-700 lbs heifers steady to 8.00 higher, rest of the heifer offering 2.00 to 4.00 lower. Slaughter cows 1.00 lower. Slaughter bulls steady.

FEEDER STEERS:

Medium and Large 1

300-400 lbs. 169.00-193.00
 400-500 lbs. 149.00-185.00
 500-600 lbs. 140.00-169.00
 600-700 lbs. 133.00-157.00
 700-800 lbs. 132.50-149.00

FEEDER HEIFERS:

Medium and Large 1

300-400 lbs. 139.00-167.00
 400-500 lbs. 138.00-162.00
 500-600 lbs. 129.00-148.00
 600-700 lbs. 125.00-148.00
 700-800 lbs. 122.00-136.00

REPLACEMENT COWS: Medium and Large 1-2 3 yrs to short solid 910-1500 lbs 2nd to 3rd stage 910.00-1155.00 per head

SLAUGHTER COWS: Breaking and Boning (75-85% lean) 58.00-73.50. Lean (85-90% lean) 50.00-65.00

COW & CALF PAIRS: Medium and Large 1-2 3-7 yrs 800-1390 lbs with 140-350 lb calves 1150.00-1550.00 per pair

SLAUGHTER BULLS: Yield Grade 1-2 few 1250-2235 lbs 83.00-95.00, high dressing 96.50-97.50

SOUTH CENTRAL MISSOURI WEEKLY SUMMARY

(Cuba, Vienna)

Receipts: 1384 Two Weeks ago: 1124 Year ago: 3125

Compared to two weeks ago, feeder steers and heifers steady. Slaughter cows steady to 2.00 lower.

FEEDER STEERS:

Medium and Large 1

350-400 lbs. 188.00
 400-500 lbs. 157.00-177.00
 500-600 lbs. 151.00-168.00
 600-700 lbs. 146.50-159.00
 700-800 lbs. 139.75-155.25

FEEDER HEIFERS:

Medium and Large 1

Pkg 375lbs. 163.00
 400-500 lbs. 152.50-161.00
 500-600 lbs. 145.00-154.00
 600-700 lbs. 134.00-149.25

REPLACEMENT COWS: Medium and Large 1-2 few 3 yrs to short solid 1100-1325 lbs 1st to 3rd stage 1020.00-1275.00 per head

SLAUGHTER COWS: Breaking and Boning (70-85% lean) 62.00-74.00. Lean (85-90%) 57.50-70.00

COW & CALF PAIRS: Scarce

SLAUGHTER BULLS: Yield Grade 1-2 1350-2200 lbs 87.50-97.50, high dressing 97.50-106.50, low dressing 74.00-84.00

NORTHWEST MISSOURI WEEKLY SUMMARY

(St Joseph)

Receipts: 901 Two Weeks ago: 1065 Year ago: 1066

Compared to two weeks ago, steers and heifers 2.00 to 5.00 higher, except 600-700 lbs feeders steady to 5.00 lower. Slaughter cows and bulls steady to 2.00 higher.

FEEDER STEERS:

Medium and Large 1

450-500 lbs. 173.00-184.00
 500-600 lbs. 164.00-176.00
 600-700 lbs. 150.00-165.00
 700-800 lbs. 150.25-160.00
 800-900 lbs. 141.00-144.35

FEEDER HEIFERS:

Medium and Large 1

Few 375-400 lbs. 164.00
 400-500 lbs. 155.00-164.00
 500-600 lbs. 145.00-155.00
 600-700 lbs. 139.25-153.00
 700-800 lbs. 139.00-139.75

SLAUGHTER BULLS: Yield grade 1-2 1220-2325 lbs 85.00-93.00, low dressing 74.00-85.00

SLAUGHTER COWS: Breaking and Boning (70-85% lean) 62.00-73.00, high dressing 74.00-76.50. Lean (85-90%) 60.00-68.00

BRED COWS: Medium and Large 1 2-4 yrs 3rd stage 1210 lbs 1350.00 per head. Medium and Large 1-2 2-4 yrs 2nd stage 1040 lbs 1200.00 per head

COW-CALF PAIRS: Scarce

MISSOURI WEEKLY DIRECT WEANER AND FEEDER PIG REPORT

Receipts: 8272 Weaner pigs steady to 2.00 higher. Feeder pigs no sales reported. Prices per head. Early weaned pigs 10 lb. base weights FOB the farm 0% negotiated, 3950 head, 10 lbs, 35.00-36.00, weighted average 35.37. Early weaned pigs 10 lb base weights, delivered 100% negotiated, 4322 head, 10 lbs, 27.00-31.00, weighted average 29.78.

WHOLESALE FEEDSTUFFS PRICES
 (DOLLARS PER TON-BULK BASIS)

Area	Soybean Meal 48% Solvent	Cottonseed Meal 41% Solvent	Meat Meal	Wheat Middlings
Kansas City	326.20	227.50	265.00	85.00
St. Louis	347.50	225.00	270.00	85.00

MISSOURI WEEKLY DIRECT
SLAUGHTER CATTLE REPORT

Weekly Receipts: 120 Week ago: 400 Year ago: 320
Trading from last Friday through Friday morning remains light as bids and asking prices have firmed with grid dress sales 2.00 higher.

LIVE STEERS & HEIFERS:

No sales

DRESSED STEERS & HEIFERS:

No sales

GRADE AND WEIGHT (Grid):

3 loads 195.00

By-Product Feed Prices

Alfalfa Pellets, St. Louis MO 235.00; Corn Gluten Feed pelleted, Butler, MO FOB out; Distillers Grain Dried, FOB Carrollton, MO 110.00; Soy Hulls Kansas City, MO 85.00. Prices per ton.

Norwood - Producer's Auction Yards**Special Dairy Heifer Sale Report for 06/08/2017**

Receipts: 129 Last Month Special: 206 Year Ago: 298
Springer Heifers Bred Seven to Nine Months: Supreme 1325.00-1450.00, Jersey 1290.00-1500.00. Approved 1075.00-1250.00. Medium 1000.00-1025.00. Common 750.00-850.00. Heifers Bred Four to Six Months: Supreme 1250.00-1525.00. Approved 1100.00-1235.00. Medium 935.00-1050.00, Jerseys 820.00-975.00. Common 460.00-800.00. Heifers Bred One to Three Months: Supreme 1225.00-1275.00, Jerseys 1275.00-1575.00. Approved 1075.00-1125.00. Medium 850.00-900.00. Common 710.00-735.00. Open heifers: Approved 442-480 lbs Pkg 10 hd 600.00, Pair Jerseys 670.00, 769-778 lbs Pkg 6 hd 950.00, Pkg 6 hd 800 lbs 990.00. Medium 420-445 lbs 350.00-375.00, 512-560 lbs 470.00-600.00, 621-695 lbs 450.00-670.00, 845-890 lbs 790.00-900.00. Fresh Milking Heifers and Cows: Supreme 1350.00-1700.00, Jerseys 1400.00-1500.00. Approved 1200.00-1375.00. Medium 925.00-1200.00, Jerseys 850.00-900.00. Common 700.00-900.00. Bred and Springer Cows: Supreme 1375.00-1525.00, Jerseys 1425.00-1675.00. Approved 1225.00-1350.00. Medium 1075.00-1100.00, Jerseys 875.00-950.00. Common 635.00-725.00. Baby Calves: Holstein Heifers 320.00-420.00. Holstein Bulls Large 190.00-280.00. Jersey Heifers 210.00-350.00. Jersey Bulls 50.00-55.00. Crossbred Heifers 225.00-275.00. Crossbred Bulls Large 165.00-220.00. Beef Cross Heifers 225.00-280.00. Beef Cross Bulls 240.00-300.00.

Montgomery County Livestock Auction Sheep and Goat Sale
07/13/2017

Receipts: 400 Last Month: 470 Last Year: 460

SHEEP: 220 head (prices per hundred weight) Slaughter Lambs: Choice and Prime 2-3 50-90 lbs 170.00-180.00; 2 pkgs 55-65 lbs 185.00; pkg 131 lbs 141.00. Slaughter Ewes: Good and Choice 1-3 60-175 lbs 63.00-75.00; Utility and Good 1-2 59.00-61.00 cwt. Replacement Ewes: yearlings to 3 yrs few turnout 60-110 lbs 97.00-115.00 cwt, few yearlings 60-85 lbs 120.00-135.00 cwt. Feeder Lambs: Medium and Large 1-2 29-50 lbs 175.00-185.00 cwt; few 25-35 lbs 200.00-215.00 cwt. Slaughter Bucks: Utility and Good 2-3 150-215 lbs 61.00-69.00 cwt. Replacement Bucks: ind 155 lbs 135.00 cwt. GOATS: 180 head (prices per hundred weight) Slaughter Kids: Selection 1 40-75 lbs 235.00-250.00; Selection 2 40-50 lbs 215.00-225.00; Selection 2-3 few 40-50 lbs 190.00-200.00, thin few 162.50-170.00. Feeder Kids: Selection 1-2 30-35 lbs 225.00-240.00 cwt; Selection 2-3 pkg 36 lbs 190.00. Nannies: Selection 1-2 65-130 lbs few 102.50-115.00, few singles 130.00-135.00 Replacement Nannies: Selection 1 2 lots young purebred Kikoo nannies 62-75 lbs 235.00-240.00 per head; pkg 82 lbs 185.00 per head; 2 lots nanny kids 49-55 lbs 135.00-155.00 per head. Selection 1-2 yearling to 3 yrs 60-125 lbs 165.00-185.00 cwt. Selection 2 55-90 lbs 145.00-152.50 cwt. Billies: Selection 1 replacement 215 lbs 195.00 cwt.

WEEKLY COMMODITY GRAIN FUTURES TRENDS

Compared to last Friday: Soybeans .11 to .14 lower, Wheat .17 to .25 lower, Corn .13 to .17 lower, Kansas City Wheat .23 to .30 lower, Soybean Meal 6.20 to 7.00 lower.

Daily Grain Futures Closes

	Mon.	Tues.	Wed.	Thu.	Fri.
Soybeans					
Jul	1020 1/4	1025 1/4	1016 3/4	972 1/2	985 1/4
Aug	1024 3/4	1029 1/4	1020 3/4	975 1/2	989
Sep	1030	1034 1/4	1025 1/4	978 3/4	992 3/4
Nov	1039 1/4	1043 1/4	1034	987 1/2	1001 1/2
Jan	1046 3/4	1050 3/4	1042	996	1010 1/2
Wheat					
Jul	530 1/2	535 1/2	522 1/2	495 1/2	494 3/4
Sep	550	553	537	511 3/4	510 3/4
Dec	574	576 1/2	560 1/2	535	534 3/4
Mar	590 3/4	593 3/4	578 3/4	554	554 1/4
May	599 3/4	602 1/2	587 3/4	565	565
Corn					
Jul	391 3/4	392 1/4	376 1/4	361	365 1/4
Sep	402	401 3/4	385 1/2	369 3/4	376 1/4
Dec	414 3/4	414 1/4	398 3/4	383	389 1/2
Mar	423 3/4	423 1/4	408 1/2	393 1/2	400 1/4
May	428	428	413 1/2	398 3/4	405
KC Wheat					
Jul	541	541	528	499 3/4	499
Sep	557 1/4	557 1/2	544	515 1/2	513 1/2
Dec	583 1/4	583 3/4	570 1/2	542	540
Mar	596 3/4	597 3/4	586 1/4	558 1/4	556
May	605 1/4	606 3/4	596 1/2	570	568
SB Meal					
Jul	336.40	336.80	334.40	316.80	322.30
Aug	338.20	338.70	336.00	317.90	323.70
Sep	340.20	340.80	338.00	319.90	325.70
Oct	342.20	342.70	339.90	321.90	327.80
Dec	345.60	346.20	343.30	325.10	331.20

WEEKLY COMMODITY FUTURES TRENDS

Compared to last week: Live Cattle 3.03 to 4.75 higher, Lean Hogs 2.72 to 3.32 lower, except Jul .88 higher, Feeder Cattle 7.93 to 9.25 higher.

Daily Futures Closes

	Mon.	Tues.	Wed.	Thu.	Fri.
Cattle					
Aug	113.82	114.87	117.87	117.42	117.80
Oct	113.42	114.82	117.82	117.82	118.57
Dec	114.10	115.32	118.32	118.22	119.00
Feb	114.97	115.97	118.85	118.62	119.22
Apr	114.20	115.22	118.00	118.07	118.62
Lean Hogs					
Jul	91.47	92.15	92.57	92.75	92.60
Aug	82.00	82.25	82.62	82.52	79.90
Oct	69.95	69.17	69.27	69.32	67.17
Dec	64.80	63.77	63.00	63.77	62.22
Feb	68.65	67.67	67.00	67.50	66.15
Fdr Cat					
Aug	144.67	147.25	151.75	153.02	154.27
Sep	144.67	147.17	151.67	152.97	154.07
Oct	143.42	145.50	150.00	151.50	152.75
Nov	142.12	143.77	148.27	149.75	150.85
Jan	138.97	140.67	145.17	146.02	147.55
Milk					
Jul	15.55	15.65	15.63	15.59	15.62
Aug	16.26	16.57	16.50	16.55	16.63
Sep	16.54	16.99	16.91	16.95	16.99

INTERIOR MISSOURI DIRECT HOGS

Weekly Receipts: 2159 Week ago: 1778 Year ago: 2260
Compared to last week, barrows and gilts steady. Sows 5.00 to 6.00 higher.

BARROWS AND GILTS:

Base carcass meat price 81.00.
weekly top Wed 82.00

SOWS:

300-500 lbs. 45.00-58.00
Over 500 lbs. 50.00-62.00

WEEKLY MARKET SUMMARY
(USPS 597250)
To be published weekly by the
Missouri Department of Agriculture
1616 Missouri Blvd.
Jefferson City, MO 65109

Postmaster: Send address changes to:
Missouri Department of Agriculture
P.O. Box 630
Jefferson City, MO 65102

Periodicals postage paid at
Jefferson City, Missouri

Market News Hotline
1-573-522-9244

July 14, 2017

MISSOURI GRAIN WEEKLY TRENDS

Weekly Trends: Soybeans .11 to .22 lower, Wheat .25 to .32 lower, Corn .14 to .19 lower, Sorghum .28 to .46 lower.

Area	#1 Soy-beans	#2 Soft Wheat	#2 Corn	#2 Grain Sorghum
<u>Kansas City</u>				
Friday**	9.69-9.86	5.14-5.20	3.42-3.67	5.83-6.03
Monday	9.90-10.00	5.29	3.51-3.77	6.01
Tuesday	9.90-10.04	5.11-5.32	3.52-3.77	5.83-6.01
Wednesday	9.82-9.95	4.98-5.14	3.36-3.60	5.55-5.71
Thursday	9.40-9.50	4.87	3.21-3.45	5.44
Friday	9.54-9.64	4.86-4.88	3.25-3.51	5.55-5.57
<u>St. Louis</u>				
Friday**	9.99-10.00	5.38-5.40	3.81-3.82	5.92
Monday	10.19-10.21	5.52-5.55	3.91	5.92-6.10
Tuesday	10.21-10.24	5.55-5.58	3.88-3.90	6.08
Wednesday	10.12-10.15	5.39-5.42	3.72	5.80
Thursday	9.68-9.70	5.13-5.16	3.59-3.60	5.51
Friday	9.88	5.12-5.15	3.66-3.67	5.64
<u>Central</u>				
Friday**	9.61-9.66	5.05-5.15	3.47-3.53	—
Monday	9.85-9.90	5.20-5.30	3.57-3.62	—
Tuesday	9.89-9.94	5.23-5.33	3.57-3.62	—
Wednesday	9.81-9.86	5.07-5.17	3.40-3.46	—
Thursday	9.35-9.41	4.82-4.92	3.25-3.30	—
Friday	9.44-9.54	4.81-4.91	3.31-3.36	—
<u>S.E. MO</u>				
Friday**	9.92-9.99	5.31-5.42	3.73-3.80	—
Monday	10.12-10.20	5.44-5.57	3.82-3.83	—
Tuesday	10.16-10.24	5.49-5.59	3.81-3.82	—
Wednesday	10.11-10.15	5.33-5.43	3.65-3.66	—
Thursday	9.67-9.76	5.08-5.17	3.49-3.59	—
Friday	9.81-9.91	5.07-5.15	3.56-3.65	—

Missouri Crop Progress and Condition Report (07/10/2017)

Temperatures last week averaged 76.7 degrees, 0.8 degrees below normal. Precipitation averaged 1.00 inch statewide, 0.14 inches above normal. There were 5.1 days suitable for fieldwork for the week ending July 9. Topsoil moisture supply was rated 2 percent very short, 14 percent short, 79 percent adequate, and 5 percent surplus. Subsoil moisture supply was rated 2 percent very short, 11 percent short, 84 percent adequate, and 3 percent surplus. Corn silking progressed to 51 percent, up 26 percentage points from last week. Corn condition was rated 2 percent very poor, 5 percent poor, 25 percent fair, 56 percent good, and 12 percent excellent. Soybeans blooming reached 23 percent. Soybeans setting pods reached 2 percent. Soybean condition was rated 2 percent very poor, 5 percent poor, 31 percent fair, 54 percent good, and 8 percent excellent. Cotton squaring reached 68 percent. Cotton setting bolls reached 9 percent. Cotton condition was rated 8 percent poor, 30 percent fair, 54 percent good, and 8 percent excellent. Rice headed was at 10 percent. Rice condition was rated 2 percent poor, 25 percent fair, 47 percent good, and 26 percent excellent. Pasture and range condition was rated 2 percent poor, 27 percent fair, 64 percent good, and 7 percent excellent.

(PRICES PER BU. EXCEPT GR. SORG. PER CWT)
*NEW CROP **PREVIOUS WEEK'S PRICES