

# Weekly Market Summary

Published by:  
**Missouri Department of Agriculture**  
**Ag Business Development Division**  
**Market News Program**



Chris Chinn, Director  
 Ken Struempf, Division Director  
 Tony Hancock, Editor  
 agmarketnews.mo.gov  
 http://www.ams.usda.gov/

Eric R. Greitens, Governor

Volume XXXVII, Number 29 ♦ P.O. Box 630, Jefferson City, MO 65102 ♦ (573) 751-4211 ♦ Friday July 21, 2017

## MISSOURI WEEKLY FEEDER CATTLE WEIGHTED AVERAGE REPORT

Receipts: 14,444 Week ago: 22,661 Year ago: 11,332  
 Steers and Heifers Medium and Large 1 Hols. Large 3

Fdr. STEERS:		Fdr. HEIFERS:		Hols. STEERS	
355 lbs.	181.85	348 lbs.	158.80	422 lbs.	86.57
468 lbs.	171.37	461 lbs.	151.68	925 lbs.	84.36
559 lbs.	166.67	552 lbs.	147.92		
653 lbs.	160.18	647 lbs.	147.04		
754 lbs.	152.45	722 lbs.	140.58		
849 lbs.	153.76	841 lbs.	134.40		
917 lbs.	143.43				

## SOUTHERN MISSOURI WEEKLY SUMMARY (West Plains, Ava)

Receipts: 3311 Week ago: 5220 Year ago: 3815  
 Compared to last week, feeder sold steady to 5.00 higher with some steer calves up to 9.00 higher. Slaughter cows steady to 1.00 lower. Slaughter bulls steady to 3.00 lower.

STEERS:		HEIFERS:	
Medium and Large 1		Medium and Large 1	
400-500 lbs.	163.00-176.00	400-500 lbs.	143.00-158.00
500-600 lbs.	152.00-171.00	500-600 lbs.	137.50-150.00
600-700 lbs.	148.00-166.00	600-700 lbs.	135.00-143.00
750-800 lbs.	142.00-146.00	700-750 lbs.	136.00-138.00
800-900 lbs.	144.00-147.00		

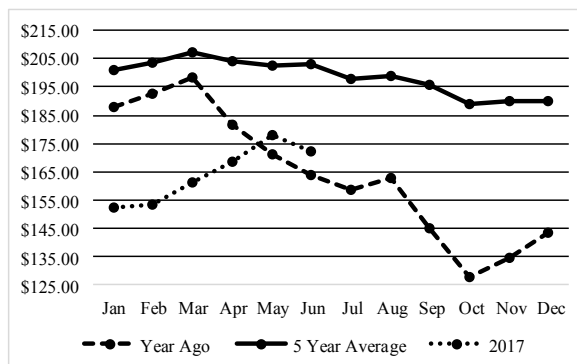
Holsteins:		SLAUGHTER COWS:	
Large 3		Breaking and Boning (70-85% lean) 68.00-75.50, high dressing 74.00-83.50, low dressing 64.00-69.00. Lean (85-90%) 62.00-70.00	
400-450 lbs.	86.00-92.50		
900-950 lbs.	76.00-82.50		

SLAUGHTER BULLS:		REPLACEMENT COWS:	
Yield Grade 1-2 1095-2200 lbs. 85.00-100.00, high dressing 98.50-106.00, low dressing 74.00-85.00		Medium and Large 1-2 2-7 yrs 2nd to 3rd stage 988-1675 lbs 1150.00-1400.00; 1st stage 1075.00-1150.00 per head.	

**COW & CALF PAIRS:**  
 Medium and Large 1-2 2-6 yrs 965-1235 lbs with 200-250 lb calves 1200.00-1550.00 per pair; short solid mouth 1225-1295 lbs 100-200 lb calves 1250.00-1425.00 per pair

The Weekly Market Summary is available to anyone for a \$25.00 annual subscription fee. To subscribe, send your check or money order to: Weekly Market Summary, Missouri Department of Agriculture, P.O. Box 630, Jefferson City, MO 65102.

## Historical Feeder Steers Medium and Large 1 500-600 lbs. Weighted Average



\*Graph is updated the first Friday of each month.

## Year Ago Slaughter Steers and Heifers:

Northeast Missouri: Steers: Choice 2-3 pkg 1280 lbs 117.00.  
 Heifers: Choice 3-4 1150-1400 lbs. 113.00-114.75.

East Central Missouri: Select and Choice 2-3 1000-1415 lbs 110.00-144.50. Low Select 1-2 102.50-107.25.

## SOUTHWEST MISSOURI WEEKLY SUMMARY (Joplin and Springfield)

Feeder Cattle Receipts: 4414 Week ago: 6498 Year ago: 3322  
 Cow and Bull Receipts: 1156 Weeks ago: 1069 Year ago: 699  
 Compared to last week, calves steady, yearlings steady to 7.00 higher. Slaughter cows steady to 1.00 lower. Slaughter bulls 1.00 lower to 2.00 higher.

STEERS:		HEIFERS:	
Medium and Large 1		Medium and Large 1	
400-500 lbs.	165.00-190.00	400-500 lbs.	143.00-165.00
500-600 lbs.	157.00-175.00	500-600 lbs.	135.00-154.00
600-700 lbs.	149.00-167.00	600-700 lbs.	132.00-152.75
700-800 lbs.	137.00-153.00	700-750 lbs.	137.00-143.50
800-850 lbs.	140.00-146.00	Lot 841 lbs.	137.00

HOLSTEINS:		SLAUGHTER COWS:	
Large 3		Breaking and Boning (70-85% lean) 68.00-75.00, high dressing 76.00-84.00. Lean (85-90%) 59.00-70.00	
Load 929 lbs.	88.75		

**SLAUGHTER BULLS:** Yield Grade 1-2 1000-2400 lbs 88.00-97.50, high dressing 98.00-105.00, low dressing 73.00-88.00

**REPLACEMENT COWS:** Medium and Large 1-2 2-7 yrs 975-1475 lbs 2nd to 3rd stage 1050.00-1500.00, 6 yrs to short solid mouth 1180-1424 lbs 2nd to 3rd stage 1000.00-1250.00 per head

**COW & CALF PAIRS:** Medium and Large 1-2 1 1/2-7 yrs 1050-1325 lbs with 150-450 lb calves some rebred 1475.00-2050.00 per pair

**WEST CENTRAL MISSOURI WEEKLY SUMMARY**

(Sedalia, Kingsville, Butler)

Receipts: 1060 Week ago: 1832 Year ago: 1360

Compared to a week ago, feeders sold with a steady undertone. Slaughter cows steady.

FEEDER STEERS:  
Medium and Large 1400-500 lbs. 176.00  
500-600 lbs. 159.00-169.00  
600-700 lbs. 154.00-164.00  
700-800 lbs. 142.00-154.00FEEDER HEIFERS:  
Medium and Large 1400-500 lbs. 153.00-159.00  
500-600 lbs. 144.25-153.25  
600-700 lbs. 138.75-143.25REPLACEMENT COWS: Medium and Large 1-2 2-5 yrs 1180-1328 lbs 2nd to 3rd stage 1210.00-1335.00 per headSLAUGHTER COWS: Breaking and Boning (70-85% lean) 68.00-75.00. Lean (85-90%) 62.50-70.00COW & CALF PAIRS: scarceSLAUGHTER BULLS: Yield Grade 1-2 1235-2285 lbs 89.00-98.00, high dressing 105.00, low dressing 83.00-90.50**EAST CENTRAL MISSOURI WEEKLY SUMMARY**

(Bowling Green, Kingdom City, Macon, Boonville)

Receipts: 3299 Week ago: 2884 Year ago: 2814

Compared to last week feeders sold steady to 5.00 higher. Slaughter cows steady.

FEEDER STEERS:  
Medium and Large 1400-500 lbs. 179.00-194.00  
500-600 lbs. 170.00-189.00  
600-700 lbs. 160.50-175.50  
700-800 lbs. 156.00-167.50  
800-900 lbs. 155.50-163.75FEEDER HEIFERS:  
Medium and Large 1300-400 lbs. 161.00-167.00  
400-500 lbs. 156.00-169.00  
500-600 lbs. 153.00-165.00  
600-700 lbs. 144.00-163.25  
700-800 lbs. 136.50-150.00SLAUGHTER STEERS and HEIFERS: Choice 1-3 1060-1395 lbs 117.00-118.50. Select 1-2 950-1450 lbs 104.00-111.00SLAUGHTER COWS: Breaking and Boning, (70-85% lean) Average dressing 68.00-76.50, high dressing 73.00-81.50, Lean (85-90%) 67.00-73.00REPLACEMENT COWS: ScarceSLAUGHTER BULLS: Yield Grade 1-2 1200-2550 88.50-99.00, high dressing 103.50-106.00, low dressing 79.50-86.50**NORTHEAST MISSOURI WEEKLY SUMMARY**

(Palmyra, Unionville, Green City, New Cambria)

Receipts: 534 Week ago: 2464 Year ago: 840

Slaughter Cattle Receipts: 66 Week ago: 2 Year ago: 25

No true price comparison available, undertone firm. Slaughter cows steady. Slaughter steers and heifers had no good comparison.

FEEDER STEERS:  
Medium and Large 1500-600 lbs. 182.00-190.00  
600-700 lbs. 164.75-180.00  
800-900 lbs. 153.50-158.00FEEDER HEIFERS:  
Medium and Large 1Lot 472 lbs. 167.00  
Lot 568 lbs. 157.25  
Lot 721 lbs. 135.00SLAUGHTER STEERS: Choice 2-3 1100-1450 lbs 118.75-122.00 few high dressing 122.00-123.00.SLAUGHTER COWS: Breaking and Boning (75-85% lean) 68.00-76.00, low dressing 64.75-69.50. Lean (85-90%) 63.50-71.50SLAUGHTER HEIFERS: Choice 2-3 1050-1250 lbs 119.25-121.75. Select 1-3 1000-1200 lbs 114.75-117.75SLAUGHTER BULLS: Yield Grade 1-2 1325-1900 lbs 87.50-95.25REPLACEMENT COWS: ScarceCOW & CALF PAIRS: Scarce**SOUTHEAST MISSOURI WEEKLY SUMMARY**

(Farmington, Patton)

Receipts: 1507 Week ago: 1704 Year ago: 357

Compared to last week, feeders sold steady to 4.00 higher with some over 500 lbs up to 10.00 higher. Slaughter cows and bulls steady to 2.00 higher.

FEEDER STEERS:  
Medium and Large 1300-400 lbs. 179.00-185.00  
400-500 lbs. 151.00-168.00  
500-600 lbs. 150.50-166.00  
600-700 lbs. 149.00-160.50  
700-800 lbs. 146.00-147.50FEEDER HEIFERS:  
Medium and Large 1300-400 lbs. 150.00-159.00  
400-500 lbs. 137.50-162.00  
500-600 lbs. 130.00-155.00  
600-700 lbs. 127.00-147.50  
700-800 lbs. 130.00-135.00REPLACEMENT COWS: Medium and Large 1-2 2-6 yrs 715-1265 lbs 1st to 3rd stage 800.00-1300.00 per headSLAUGHTER COWS: Breaking and Boning (75-85% lean) 61.50-75.00. Lean (85-90% lean) 56.00-68.00COW & CALF PAIRS: Medium and Large 1-2 few 5 yrs to short and solid 1000-1150 lbs w/ 250-350 lb calves 1125.00-1510.00 per pairSLAUGHTER BULLS: Yield Grade 1-2 1050-2235 lbs 82.00-95.50**SOUTH CENTRAL MISSOURI WEEKLY SUMMARY**

(Cuba, Vienna)

Receipts: 1187 Week ago: 1384 Year ago: 598

Compared to last week, feeder steers and heifers steady to 5.00 higher. Slaughter cows steady.

FEEDER STEERS:  
Medium and Large 1300-400 lbs. 174.00-185.00  
400-500 lbs. 160.00-170.00  
500-600 lbs. 155.00-169.00  
600-700 lbs. 146.00-165.25  
700-800 lbs. 140.00-144.00FEEDER HEIFERS:  
Medium and Large 1400-500 lbs. 150.00-158.00  
500-600 lbs. 144.00-159.00  
600-700 lbs. 138.50-145.50  
Pkg 750 lbs. 136.50REPLACEMENT COWS: Medium and Large 1-2 few 4 yrs to short solid 1250-1500 lbs 2nd to 3rd stage 1000.00-1325.00 per headSLAUGHTER COWS: Breaking and Boning (70-85% lean) 65.00-74.00. Lean (85-90%) 62.00-69.00COW & CALF PAIRS: ScarceSLAUGHTER BULLS: Yield Grade 1-2 1400-2250 lbs 85.00-99.00, high dressing 99.00-102.00**NORTHWEST MISSOURI WEEKLY SUMMARY**

(St Joseph) (week ending 07/14/17)

Receipts: 901 Two Weeks ago: 1065 Year ago: 1066

Compared to two weeks ago, steers and heifers 2.00 to 5.00 higher, except 600-700 lbs feeders steady to 5.00 lower. Slaughter cows and bulls steady to 2.00 higher.

FEEDER STEERS:  
Medium and Large 1450-500 lbs. 173.00-184.00  
500-600 lbs. 164.00-176.00  
600-700 lbs. 150.00-165.00  
700-800 lbs. 150.25-160.00  
800-900 lbs. 141.00-144.35FEEDER HEIFERS:  
Medium and Large 1Few 375-400 lbs. 164.00  
400-500 lbs. 155.00-164.00  
500-600 lbs. 145.00-155.00  
600-700 lbs. 139.25-153.00  
700-800 lbs. 139.00-139.75SLAUGHTER BULLS: Yield grade 1-2 1220-2325 lbs 85.00-93.00, low dressing 74.00-85.00SLAUGHTER COWS: Breaking and Boning (70-85% lean) 62.00-73.00, high dressing 74.00-76.50. Lean (85-90%) 60.00-68.00BRED COWS: Medium and Large 1 2-4 yrs 3rd stage 1210 lbs 1350.00 per head. Medium and Large 1-2 2-4 yrs 2nd stage 1040 lbs 1200.00 per headCOW-CALF PAIRS: Scarce

**MISSOURI WEEKLY DIRECT WEANER AND FEEDER PIG REPORT**

Receipts: 5772 Weaner pigs steady to 1.00 higher. Feeder pigs no sales reported. Prices per head. Early weaned pigs 10 lb. base weights FOB the farm 0% negotiated, 4108 head, 10 lbs, 34.65-36.00, weighted average 35.12. Early weaned pigs 10 lb base weights, delivered 16% negotiated, 1664 head, 10 lbs, 27.50-36.71, weighted average 34.06.

**WHOLESALE FEEDSTUFFS PRICES  
(DOLLARS PER TON-BULK BASIS)**

Area	Soybean Meal 48% Solvent	Cottonseed Meal 41% Solvent	Meat Meal	Wheat Middlings
Kansas City	311.10	227.50	280.00	90.00
St. Louis	333.50	225.00	267.50	90.00

**MISSOURI WEEKLY DIRECT  
SLAUGHTER CATTLE REPORT**

Weekly Receipts: 0 Week ago: 120 Year ago: 120  
Trading from last Friday through Friday morning remains light as bids

LIVE STEERS & HEIFERS: No sales  
DRESSED STEERS & HEIFERS: No sales

GRADE AND WEIGHT (Grid): no sales

**By-Product Feed Prices**

Alfalfa Pellets, St. Louis MO 235.00; Corn Gluten Feed pelleted, Butler, MO FOB out; Distillers Grain Dried, FOB Carrollton, MO 115.00; Soy Hulls Kansas City, MO 95.00. Prices per ton.

**Norwood - Producer's Auction Yards**

**Special Dairy Heifer Sale Report for 06/08/2017**

Receipts: 129 Last Month Special: 206 Year Ago: 298  
Springer Heifers Bred Seven to Nine Months: Supreme 1325.00-1450.00, Jersey 1290.00-1500.00. Approved 1075.00-1250.00. Medium 1000.00-1025.00. Common 750.00-850.00. Heifers Bred Four to Six Months: Supreme 1250.00-1525.00. Approved 1100.00-1235.00. Medium 935.00-1050.00, Jerseys 820.00-975.00. Common 460.00-800.00. Heifers Bred One to Three Months: Supreme 1225.00-1275.00, Jerseys 1275.00-1575.00. Approved 1075.00-1125.00. Medium 850.00-900.00. Common 710.00-735.00. Open heifers: Approved 442-480 lbs Pkg 10 hd 600.00, 769-778 lbs Pkg 6 hd 950.00. Medium 420-445 lbs 350.00-375.00, 512-560 lbs 470.00-600.00, 621-695 lbs 450.00-670.00, 845-890 lbs 790.00-900.00. Fresh Milking Heifers and Cows: Supreme 1350.00-1700.00, Jerseys 1400.00-1500.00. Approved 1200.00-1375.00. Medium 925.00-1200.00, Jerseys 850.00-900.00. Common 700.00-900.00. Bred and Springer Cows: Supreme 1375.00-1525.00, Jerseys 1425.00-1675.00. Approved 1225.00-1350.00. Medium 1075.00-1100.00, Jerseys 875.00-950.00. Common 635.00-725.00. Baby Calves: Holstein Heifers 320.00-420.00. Holstein Bulls Large 190.00-280.00. Jersey Heifers 210.00-350.00. Jersey Bulls 50.00-55.00. Crossbred Heifers 225.00-275.00. Crossbred Bulls Large 165.00-220.00. Beef Cross Bulls 240.00-300.00.

**Montgomery County Livestock Auction Sheep and Goat Sale  
07/13/2017**

Receipts: 400 Last Month: 470 Last Year: 460

SHEEP: 220 head (prices per hundred weight) Slaughter Lambs: Choice and Prime 2-3 50-90 lbs 170.00-180.00; 2 pkgs 55-65 lbs 185.00; pkg 131 lbs 141.00. Slaughter Ewes: Good and Choice 1-3 60-175 lbs 63.00-75.00; Utility and Good 1-2 59.00-61.00. Replacement Ewes: few yearlings 60-85 lbs 120.00-135.00. Feeder Lambs: Medium and Large 1-2 29-50 lbs 175.00-185.00; few 25-35 lbs 200.00-215.00. Slaughter Bucks: Utility and Good 2-3 150-215 lbs 61.00-69.00. Replacement Bucks: ind 155 lbs 135.00. GOATS: 180 head Slaughter Kids: Selection 1 40-75 lbs 235.00-250.00; Selection 2 40-50 lbs 215.00-225.00; Selection 2-3 few 40-50 lbs 190.00-200.00, thin few 162.50-170.00. Feeder Kids: Selection 1-2 30-35 lbs 225.00-240.00; Selection 2-3 pkg 36 lbs 190.00. Nannies: Selection 1-2 65-130 lbs few 102.50-115.00, few singles 130.00-135.00 Replacement Nannies: Selection 1 2 lots young purebred Kikoo nannies 62-75 lbs 235.00-240.00 per head; pkg 82 lbs 185.00 per head; 2 lots nanny kids 49-55 lbs 135.00-155.00 per head. Selection 1-2 yearling to 3 yrs 60-125 lbs 165.00-185.00. Selection 2 55-90 lbs 145.00-152.5. Billies: Selection 1 replacement 215 lbs 195.00.

**WEEKLY COMMODITY GRAIN FUTURES TRENDS**

Compared to last Friday: Soybeans .20 to .22 higher, Wheat .11 to .12 lower, Corn .03 to .04 higher, Kansas City Wheat .16 to .18 lower, Soybean Meal 5.80 to 6.00 higher.

Daily Grain Futures Closes

	Mon.	Tues.	Wed.	Thu.	Fri.
Soybeans					
Aug	985	989 1/2	999 3/4	1013 1/4	1009
Sep	989 1/4	993 3/4	1004	1018 1/4	1014 1/4
Nov	997 1/2	1001 3/4	1012 1/2	1027	1022 1/4
Jan	1006 1/4	1010	1021	1035 1/2	1030 3/4
Mar	1009 3/4	1012	1023	1036 1/4	1033 1/2
Wheat					
Sep	506	503 3/4	503	505 3/4	499 1/4
Dec	530 1/4	526 3/4	526 3/4	529 1/4	522 1/2
Mar	550	546	546 1/2	549 1/2	543
May	560 1/2	556 1/2	557	560	553
Jul	565 1/4	561 1/4	561 3/4	564 1/4	558
Corn					
Sep	375	377	382 1/2	391	379 3/4
Dec	388	390 3/4	396 1/4	404 3/4	393 1/2
Mar	398 3/4	401 1/2	407	415 1/4	404 1/2
May	403 3/4	406 1/2	412 1/4	420	409 1/2
Jul	408 3/4	411 1/2	417	424 1/2	414 1/4
KC Wheat					
Sep	506 1/2	502 3/4	500 1/4	503 3/4	496
Dec	532 3/4	529 1/4	526 3/4	530 1/4	522 3/4
Mar	549	545 1/2	543 1/2	547 1/4	540
May	561 3/4	558 1/2	556 1/2	560 1/4	552 3/4
Jul	571 3/4	569	567	571	564
SB Meal					
Aug	321.80	323.50	326.60	330.50	329.70
Sep	323.80	325.50	328.70	332.50	331.70
Oct	325.90	327.50	330.60	334.50	333.60
Dec	329.50	330.90	334.20	338.10	336.80
Jan	331.30	332.80	336.10	339.90	338.70

**WEEKLY COMMODITY FUTURES TRENDS**

Compared to last week: Live Cattle .05 to 1.38 lower except Feb .15 higher, Lean Hogs .05 to 1.20 higher except Dec .25 lower, Feeder Cattle .43 to 1.32 lower.

Daily Futures Closes

	Mon.	Tues.	Wed.	Thu.	Fri.
Cattle					
Aug	116.95	115.07	117.27	115.87	116.42
Oct	118.62	116.87	118.87	117.07	117.40
Dec	119.25	117.50	119.67	118.10	118.17
Feb	119.55	118.22	120.32	119.20	119.37
Apr	118.95	117.77	119.50	118.42	118.57
Lean Hogs					
Jul	92.40	—	—	—	—
Aug	80.77	80.50	82.57	81.10	81.10
Oct	68.05	67.87	68.80	67.85	67.22
Dec	62.62	62.62	62.90	62.95	61.97
Feb	66.92	67.10	67.40	67.37	66.95
Fdr Cat					
Aug	154.42	151.60	154.50	152.27	152.95
Sep	154.37	151.65	154.45	152.32	153.15
Oct	153.15	150.42	152.95	150.85	151.95
Nov	151.32	149.00	151.47	149.37	150.42
Jan	147.97	145.90	148.37	146.17	147.05
Milk					
Jul	15.62	15.60	15.56	15.51	15.51
Aug	16.63	16.63	16.57	16.30	16.10
Sep	16.99	16.90	16.82	16.63	16.46

**INTERIOR MISSOURI DIRECT HOGS**

Weekly Receipts: 1822 Week ago: 2169 Year ago: 1985  
Compared to last week, barrows and gilts steady to 1.00 lower. Sows 2.00 to 4.00 higher.

BARROWS AND GILTS: Base carcass meat price 80.00-81.00. weekly top Tue 82.00  
SOWS: 300-500 lbs. 48.00-60.00 Over 500 lbs. 54.00-64.00

**Market News Hotline**  
**1-573-522-9244**

**July 21, 2017**

**MISSOURI GRAIN WEEKLY TRENDS**

Weekly Trends: Soybeans .20 to .35 higher, Wheat .11 to .17 lower, Corn .02 to .20 higher, Sorghum .05 to .07 higher.

Area	#1 Soybeans	#2 Soft Wheat	#2 Corn	#2 Grain Sorghum
<u>Kansas City</u>				
Friday**	9.54-9.64	4.86-4.88	3.25-3.51	5.55-5.57
Monday	9.50-9.60	4.81	3.40-3.50	5.53
Tuesday	9.54-9.64	4.74-4.79	3.42-3.52	5.57
Wednesday	9.64-9.75	4.73-4.79	3.48-3.57	5.66-5.67
Thursday	9.78-9.88	4.76-4.81	3.56-3.66	5.82
Friday	9.74-9.84	4.69-4.74	3.45-3.55	5.62
<u>St. Louis</u>				
Friday**	9.88	5.12-5.15	3.66-3.67	5.64
Monday	9.87	5.06-5.11	3.67	5.62
Tuesday	9.91-9.94	5.03-5.08	3.69	5.66
Wednesday	10.04-10.08	5.03-5.08	3.75	5.76
Thursday	10.22-10.23	5.06-5.11	3.80	5.91
Friday	10.19-10.23	4.99-5.04	3.69	5.71
<u>Central</u>				
Friday**	9.44-9.54	4.81-4.91	3.31-3.36	—
Monday	9.40-9.50	4.76-4.86	3.30-3.35	—
Tuesday	9.44-9.55	4.74-4.84	3.32-3.37	—
Wednesday	9.55-9.65	4.73-4.83	3.37-3.47	—
Thursday	9.68-9.73	4.76-4.81	3.46-3.51	—
Friday	9.64-9.69	4.69-4.74	3.35-3.40	—
<u>S.E. MO</u>				
Friday**	9.81-9.91	5.07-5.15	3.56-3.65	—
Monday	9.78-9.89	5.00-5.11	3.55-3.58	—
Tuesday	9.85-9.96	4.98-5.08	3.57-3.62	—
Wednesday	9.95-10.11	4.99-5.09	3.63-3.73	—
Thursday	10.14-10.22	5.00-5.12	3.70-3.78	—
Friday	10.10-10.22	4.93-5.06	3.59-3.61	—

(PRICES PER BU. EXCEPT GR. SORG. PER CWT)  
 \*NEW CROP \*\*PREVIOUS WEEK'S PRICES

**Missouri Crop Progress and Condition Report**  
 (07/17/2017)

Ideal temperatures and adequate rain allowed crops to progress. Temperatures last week averaged 80.5 degrees, 2.4 degrees above normal. Precipitation averaged 0.85 inch statewide, 0.03 inches above normal. There were 5.5 days suitable for fieldwork for the week ending July 16. Topsoil moisture supply was rated 3 percent very short, 18 percent short, 76 percent adequate, and 3 percent surplus. Subsoil moisture supply was rated 4 percent very short, 16 percent short, 79 percent adequate, and 1 percent surplus. Corn silking progressed to 81 percent, up 30 percentage points from last week. Corn condition was rated 1 percent very poor, 5 percent poor, 25 percent fair, 58 percent good, and 11 percent excellent. Soybeans blooming reached 44 percent. Soybeans setting pods reached 14 percent. Soybean condition was rated 2 percent very poor, 5 percent poor, 28 percent fair, 57 percent good, and 8 percent excellent. Cotton squaring reached 82 percent. Cotton setting bolls reached 16 percent. Cotton condition was rated 12 percent poor, 34 percent fair, 45 percent good, and 9 percent excellent. Rice headed was at 27 percent. Rice condition was rated 3 percent poor, 25 percent fair, 47 percent good, and 25 percent excellent. Pasture and range condition was rated 1 percent very poor, 2 percent poor, 29 percent fair, 62 percent good, and 6 percent excellent.