

Weekly Market Summary

Published by:
Missouri Department of Agriculture
Ag Business Development Division
Market News Program



Chris Chinn, Director
 Davin Althoff, Division Director
 Tony Hancock, Editor
 agmarketnews.mo.gov
<http://www.ams.usda.gov/marketnews.htm>

Eric R. Greitens, Governor

Volume XXXVII, Number 40 ♦ P.O. Box 630, Jefferson City, MO 65102 ♦ (573) 751-4211 ♦ Friday October 06, 2017

MISSOURI WEEKLY FEEDER CATTLE WEIGHTED AVERAGE REPORT

Receipts: 25,153 Week ago: 25,386 Year ago: 16,644
 Steers and Heifers Medium and Large 1 Hols. Large 3

<u>Fdr. STEERS:</u>		<u>Fdr. HEIFERS:</u>		<u>Hols. STEERS</u>	
354 lbs.	189.29	368 lbs.	159.40	358 lbs.	98.89
458 lbs.	175.42	456 lbs.	151.55	440 lbs.	83.51
548 lbs.	165.05	550 lbs.	148.33	569 lbs.	81.47
648 lbs.	160.37	654 lbs.	152.49	636 lbs.	74.10
752 lbs.	157.81	752 lbs.	143.66	737 lbs.	82.55
849 lbs.	159.06	829 lbs.	139.61	863 lbs.	85.61
920 lbs.	148.49	921 lbs.	130.82		

SOUTHERN MISSOURI WEEKLY SUMMARY (West Plains, Ava)

Receipts: 6696 Week ago: 6865 Year ago: 4158
 Compared to last week, feeders steady to 5.00 higher, spots 8.00 higher early week. Slaughter cows 1.00 higher early week, steady to weak late week. Slaughter bulls 2.00 to 3.00 higher early week, steady to weak late week.

<u>STEERS:</u> Medium and Large 1		<u>HEIFERS:</u> Medium and Large 1	
300-400 lbs.	181.00-199.00	300-400 lbs.	154.00-170.00
400-500 lbs.	165.00-185.00	400-500 lbs.	142.50-155.00
500-600 lbs.	155.00-175.00	500-600 lbs.	140.00-154.00
600-700 lbs.	150.00-167.00	600-700 lbs.	140.00-151.00
700-800 lbs.	146.50-154.50	700-800 lbs.	140.00-146.00
800-900 lbs.	143.00-147.00	915 lbs..	129.00

<u>Holsteins:</u> Large 3	<u>SLAUGHTER COWS:</u> Breaking and Boning (70-85% lean) 56.00-61.50, high dressing 61.00-68.50, low dressing 48.00-56.00. Lean (85-90%) 49.00-57.50
Lot 565 lbs.	94.00
600-700 lbs.	72.50-82.50
700-750 lbs.	80.00-90.50
807 lbs.	88.00
879 lbs.	85.00
900-925 lbs.	66.00-70.00

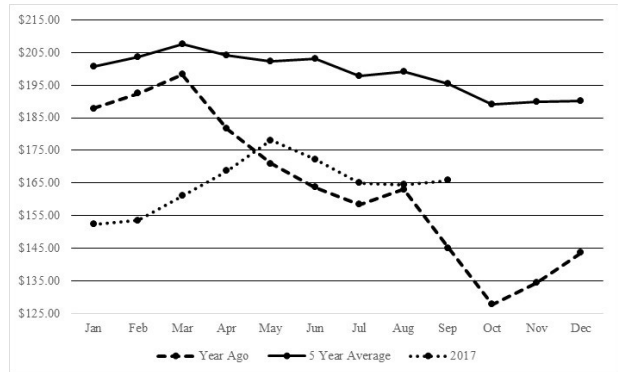
SLAUGHTER BULLS:
 Yield Grade 1-2 1185-2305 lbs. 76.00-86.00, high dressing 87.00-95.00, low dressing 68.00-77.00

COW & CALF PAIRS:
 Medium and Large 1-2 2-6 yrs 968-1375 lbs with 150-200 lb calves 1300.00-1400.00; ind short solid 1285 lbs with 200 lb calf 1250.00 per pair.

REPLACEMENT COWS:
 Medium and Large 1-2 2-7 yrs 915-1510 lbs 2nd to 3rd stage 1000.00-1300.00, 1st stage 925.00-960.00 per head; short solid to broken mouth 1130-1575 lbs 2nd to 3rd stage 800.00-1100.00 per head. Medium and Large 2 2-7 yrs 845-1355 lbs 1st to 3rd stage 750.00-1025.00 per head

The Weekly Market Summary is available to anyone for a \$25.00 annual subscription fee. To subscribe, send your check or money order to: Weekly Market Summary, Missouri Department of Agriculture, P.O. Box 630, Jefferson City, MO 65102.

Historical Feeder Steers Medium and Large 1 500-600 lbs. Weighted Average



*Graph is updated the first Friday of each month.

Year Ago Slaughter Steers and Heifers:

Northeast Missouri: Steers: Choice 2-3 1200-1425 lbs 99.50
 Heifers: Scarce

East Central Missouri: Choice 2-3 1100-1500 lbs 97.00-102.00

SOUTHWEST MISSOURI WEEKLY SUMMARY (Joplin and Springfield)

Feeder Cattle Receipts: 5464 Week ago: 7610 Year ago: 4438
 Cow and Bull Receipts: 1189 Week ago: 1038 Year ago: 1063
 Compared to last week, feeders steady to 5.00 higher, sharply higher on mid-weights late week. Slaughter cows and bulls steady to 2.00 higher.

<u>STEERS:</u> Medium and Large 1		<u>HEIFERS:</u> Medium and Large 1	
300-400 lbs.	170.00-220.00	300-400 lbs.	147.00-170.00
400-500 lbs.	155.00-184.00	400-500 lbs.	139.00-160.00
500-600 lbs.	147.00-175.00	500-600 lbs.	135.00-161.00
600-700 lbs.	151.00-168.00	600-700 lbs.	139.00-155.00
700-800 lbs.	151.00-157.00	700-800 lbs.	133.00-150.00
800-900 lbs.	146.50-158.25	800-900 lbs.	128.00-133.00

<u>HOLSTEINS:</u> Large 3	<u>SLAUGHTER COWS:</u> Breaking and Boning (70-85% lean) 56.00-62.50, high dressing 59.00-69.00. Lean (85-90%) 48.00-58.00
Pkg 312 lbs.	90.00
350-400 lbs.	91.00-109.00
450-500 lbs.	85.00-89.00
550-600 lbs.	74.00-85.00
Lot 791 lbs.	75.00
Pkg 1119 lbs.	54.00

REPLACEMENT COWS:
 Medium and Large 1-2 2 yrs to short solid 980-1345 most 2nd few 3rd stage lbs 1050.00-1300.00, 1st stage 960-1285 lbs 900.00-1200.00; short solid to aged 1070-1365 lbs most 2nd few 3rd stage 615.00-1025.00 per head

COW & CALF PAIRS: Medium and Large 1-2 3 yrs to short solid 1180-1355 lbs with newborn to 300 lb calves 1300.00-1750.00; short solid 1070-1340 lbs with 150-290 lb calves 1150.00-1325.00 per pair

WEST CENTRAL MISSOURI WEEKLY SUMMARY

(Sedalia, Kingsville, Butler)

Receipts: 2012 Week ago: 2431 Year ago: 1452

Compared to last week, feeders unevenly steady. Slaughter cows steady to 3.00 higher.

FEEDER STEERS:

Medium and Large 1

300-400 lbs.	189.00-204.00
400-500 lbs.	166.00-201.50
500-600 lbs.	150.50-180.00
600-700 lbs.	154.00-165.25
700-800 lbs.	146.00-154.25

FEEDER HEIFERS:

Medium and Large 1

300-400 lbs.	165.00-180.00
400-500 lbs.	151.00-165.00
500-600 lbs.	140.00-155.00
600-700 lbs.	143.75-150.50
800-900 lbs.	126.00-130.25

REPLACEMENT COWS: Medium and Large 1-2 2-7 yrs 1050-1250 lbs 2nd to 3rd stage 1050.00-1310.00 per headSLAUGHTER COWS: Breaking and Boning (70-85% lean) 56.00-64.50. Lean (85-90%) 53.00-59.50COW & CALF PAIRS: ScarceSLAUGHTER BULLS: Yield Grade 1-2 1315-2230 lbs 79.00-84.50, high dressing 85.00-87.50, low dressing 72.00-76.50**EAST CENTRAL MISSOURI WEEKLY SUMMARY**

(Bowling Green, Kingdom City, Macon, Boonville)

Receipts: 3014 Week ago: 4276 Year ago: 1940

Compared to a week ago, steers under 700 lbs and heifers under 600 lbs 2.00 to 5.00 higher. Heavier weights higher undertone. Slaughter cows steady to 2.00 higher.

FEEDER STEERS:

Medium and Large 1

300-400 lbs.	209.00-224.00
400-500 lbs.	181.00-193.00
500-600 lbs.	168.00-181.00
600-700 lbs.	160.00-170.50
700-800 lbs.	159.85-169.50
800-900 lbs.	152.00-163.50

FEEDER HEIFERS:

Medium and Large 1

300-400 lbs.	165.00-186.00
400-500 lbs.	153.00-171.00
500-600 lbs.	150.00-157.50
600-700 lbs.	148.00-155.50
785lbs.	142.50

SLAUGHTER STEERS and HEIFERS: Select and Choice 1-3 1150-1500 lbs 104.00-105.50, few Holsteins 1475-2150 lbs 76.00-80.75SLAUGHTER COWS: Breaking and Boning, (70-85% lean) Average dressing 58.00-64.00, high dressing 64.00-67.50. Lean (85-90%) 56.00-62.50REPLACEMENT COWS: Medium and Large 1 3-5 yrs blk 1125-1400 lbs 3rd stage 1600.00-1775.00 per headSLAUGHTER BULLS: Yield Grade 1-2 1200-2550 lbs 82.00-87.00, high dressing 91.00-94.50, low dressing 70.50-76.00**NORTHEAST MISSOURI WEEKLY SUMMARY**

(Palmyra, Unionville, Green City, New Cambria)

Receipts: 2860 Week ago: 2114 Year ago: 2440

Slaughter Cattle Receipts: 55 Week ago: 44 Year ago: 29

Compared to last week, feeders 5.00 to 8.00 higher. Slaughter cows 2.00 to 3.00 lower. Slaughter steers and heifers 1.00 higher. (Slaughter steers and heifers week ending 10/06/17.)

FEEDER STEERS:

Medium and Large 1

400-500 lbs.	191.00-198.00
500-600 lbs.	168.00-176.00
600-700 lbs.	165.00-177.00
700-800 lbs.	160.00-175.25
800-900 lbs.	157.50-165.75

FEEDER HEIFERS:

Medium and Large 1

400-500 lbs.	153.00-164.50
500-600 lbs.	161.50-165.50
600-700 lbs.	151.50-166.75
700-800 lbs.	145.35-159.25
800-900 lbs.	141.35-154.25

SLAUGHTER STEERS: Choice 2-3 1250-1425 lbs 106.75-107.50SLAUGHTER COWS: Breaking and Boning (75-85% lean) 55.00-65.75. Lean (85-90%) 54.50-60.50SLAUGHTER HEIFERS: Choice 2-3 1200-1250 lbs 105.25-106.00SLAUGHTER BULLS: Yield Grade 1-2 1275-2050 lbs 71.50-84.50REPLACEMENT COWS: ScarceCOW & CALF PAIRS: Scarce**SOUTHEAST MISSOURI WEEKLY SUMMARY**

(Farmington, Patton)

Receipts: 2756 Week ago: 1814 Year ago: 1795

Compared to last week, feeders steady to 5.00 higher. Slaughter cows steady to bulls 2.00 lower.

FEEDER STEERS:

Medium and Large 1

300-400 lbs.	155.00-205.00
400-500 lbs.	150.00-187.00
500-600 lbs.	137.00-173.50
600-700 lbs.	128.00-161.00
700-800 lbs.	135.00-151.00

FEEDER HEIFERS:

Medium and Large 1

300-400 lbs.	139.00-165.00
400-500 lbs.	133.00-160.00
500-600 lbs.	129.00-150.00
600-700 lbs.	125.00-146.50
700-800 lbs.	124.00-133.00

REPLACEMENT COWS: Medium and Large 1-2 4 yrs to short solid 830-1230 lbs 2nd to 3rd stage 680.00-1100.00 per headSLAUGHTER COWS: Breaking and Boning (75-85% lean) 42.50-57.00. Lean (85-90% lean) 43.00-52.50COW & CALF PAIRS: Medium and Large 1-2 4-7 yrs 870-1295 lbs with 65-340 lb calves 1025.00-1675.00 per pairSLAUGHTER BULLS: Yield Grade 1-2 few 985-2090 lbs 57.00-75.50, high dressing 75.00-89.00**SOUTH CENTRAL MISSOURI WEEKLY SUMMARY**

(Cuba, Vienna)

Receipts: 2302 Week ago: 1469 Year ago: 1537

Compared to last week, feeders steady to 4.00 higher. Slaughter cows steady.

FEEDER STEERS:

Medium and Large 1

300-400 lbs.	181.00-220.00
400-500 lbs.	164.00-195.00
500-600 lbs.	160.00-174.00
600-700 lbs.	158.00-173.00
745 lbs.	156.50

FEEDER HEIFERS:

Medium and Large 1

350-400 lbs.	156.00-164.50
400-500 lbs.	153.00-162.00
500-600 lbs.	147.50-157.50
600-700 lbs.	145.00-153.75
725 lbs.	144.25

REPLACEMENT COWS: Medium and Large 1-2 few 1 1/2 to 6 yrs 825-1350 lbs 1st to 2nd stage 950.00-1160.00 per headSLAUGHTER COWS: Breaking and Boning (70-85% lean) 55.50-62.00. Lean (85-90%) 53.00-58.00COW & CALF PAIRS: ScarceSLAUGHTER BULLS: Yield Grade 1-2 1550-2850 lbs 78.00-86.00, low dressing 67.50-74.50**NORTHWEST MISSOURI WEEKLY SUMMARY**

(St Joseph)

Receipts: 1539 Week ago: 664 Year ago: 1131

Compared to last week, feeders sharply higher on limited comparisons with the full advance on yearlings. Slaughter cows mostly steady, spots 3.00 higher. Slaughter bulls mostly steady.

FEEDER STEERS:

Medium and Large 1

400-500 lbs.	172.00-188.00
500-600 lbs.	167.00-178.25
600-700 lbs.	162.40-169.50
700-800 lbs.	151.50-165.00
800-900 lbs.	145.00-165.25

FEEDER HEIFERS:

Medium and Large 1

400-500 lbs.	147.25-156.00
500-600 lbs.	143.50-150.50
600-700 lbs.	147.00-157.50
700-800 lbs.	144.50-160.00
lot 862 lbs.	144.50

SLAUGHTER BULLS: Yield Grade 1-2 1833-2530 lbs 75.00-85.00, low dressing 75.00SLAUGHTER COWS: Breaking and Boning (70-85% lean) 58.00-65.00, high dressing 60.00-69.00, low dressing 53.00-58.00 Lean (85-90%) 53.00-57.00BRED COWS: Medium and Large 1-2 2-8 yrs 1180 lbs 2nd stage 975.00 per headCOW-CALF PAIRS: Scarce

MISSOURI WEEKLY DIRECT WEANER AND FEEDER PIG REPORT

Receipts: 4991 Weaner pigs steady to 1.00 higher. Feeder pigs no sales reported. Prices per head. Early weaned pigs 10 lb. base weights FOB the farm 0% negotiated, 4132 head, 10 lbs, 36.00-39.60, weighted average 38.31. Early weaned pigs 10 lb base weights, delivered 0% negotiated, 859 head, 10 lbs, 38.53-38.58, weighted average 38.57

**WHOLESALE FEEDSTUFFS PRICES
(DOLLARS PER TON-BULK BASIS)**

Area	Soybean Meal 48% Solvent	Cottonseed Meal 41% Solvent	Meat Meal	Wheat Middlings
Kansas City	300.50	n/a	255.00	113.00
St. Louis	330.50	265.00	250.00	106.50

**MISSOURI WEEKLY DIRECT
SLAUGHTER CATTLE REPORT**

Weekly Receipts: 0 Week ago: 480 Year ago: 0
Trading from last Friday through this week remains light with producers passing bids at this time.

LIVE STEERS & HEIFERS:
No sales

DRESSED STEERS & HEIFERS:
No sales

GRADE AND WEIGHT (Grid):
No sales

By-Product Feed Prices

Alfalfa Pellets, St. Louis MO 235.00; Corn Gluten Feed pelleted, Butler, MO FOB out; Distillers Grain Dried, FOB Carrollton, MO 120.00; Soy Hulls Kansas City, MO out. Prices per ton.

**Springfield - Springfield Livestock Marketing Center
Special Dairy Heifer Sale Report for 09/26/2017**

Receipts: 1107 Last Month Special: 556 Year Ago: 798

Springer Heifers bred seven to nine months: Supreme - 1300.00-1550.00, Approved 1000.00-1285.00. Medium 635.00- 935.00. Common 550.00-675.00. Heifers bred three to six months: Supreme 1285.00-1560.00. Approved 1000.00-1275.00, crossbreds 1000.00-1200.00. Medium 750.00-975.00. Common 410.00- 700.00. Heifers bred one to three months: Approved 1100.00-1200.00. Open Heifers: Approved: 210-298 lbs 240.00-380.00; 304-398 lbs 350.00-450.00, crossbreds 360.00-460.00; 410-495 lbs 450.00-630.00, Jerseys 800.00-810.00, crossbreds 520.00-760.00; 503-580 lbs 560.00-750.00; 610-670 lbs 570.00-760.00; 708-785 lbs 750.00-800.00. Replacement Cows: Fresh and Milking Cows: Supreme 1325.00-1625.00, crossbreds 1250.00-1425.00. Approved 1050.00-1275.00. Medium 750.00-1000.00. Common 275.00- 600.00. Springer Cows: Medium 700.00- 925.00. Common 485.00-675.00, Jerseys 520.00- 660.00. Bred Cows: Approved 1000.00-1200.00. Medium 750.00-1125.00. Common 420.00-700.00. Baby Calves: Holstein heifers 180.00-220.00, small 135.00-170.00. Holstein bulls 95.00-140.00. Jersey bulls 45.00. Jersey heifers 140.00-160.00. Crossbred heifers- 120.00-185.00, small 40.00-110.00. Crossbred bulls 110.00-185.00. Beef cross bulls 165.00-210.00

Diamond - RS Whites Sheep and Goat Auction for 10/05/2017

Receipts: 1301 Last Month: 1475 Last Year: 1394

SHEEP: Feeder Lambs: Medium and Large 1-2 mostly hair 40-55 lbs 200.00-225.00. Medium and Large 2-3 22-59 lbs 165.00-195.00. Slaughter Lambs: Wool: Prime 2-3 62-78 lbs 175.00-185.00; 82-125 lbs 130.00-155.00. Choice 1-3 70-74 lbs 145.00-165.00. Hair: Choice and Prime 2-3 60-87 lbs 180.00-210.00; 80-105 lbs 155.00-170.00. Good 1-2 60-100 lbs 130.00-145.00. Replacement Ewes: Hair: Medium and Large 1-2 86-135 lbs 140.00-170.00. Medium and Large 2-3 70-120 lbs 100.00-135.00. Wool: Few Large 1-2 100 lbs 105.00. Replacement Hair Rams: Medium and Large 1-2 75-115 lbs 135.00-140.00; 120-160 lbs 105.00-110.00. Slaughter Hair Rams. Choice 1-2 115-240 lbs 70.00-95.00. GOATS: Feeder kids: Selection 1 30-39 lbs 200.00-225.00. Selection 2 25-38 lbs 170.00-195.00. Selection 3 24-40 lbs 130.00-165.00. Slaughter Kids: Selection 1 40-72 lbs 200.00-230.00; 64-120 lbs 170.00-195.00. Selection 2 40-75 lbs 170.00-195.00; 80-138 lbs 130.00-155.00. Selection 3 40-70 lbs 135.00-165.00. Replacement Does: Selection 1 90-150 lbs 140.00-165.00; 130.00-200.00 Per head. Selection 2 63-120 lbs 100.00-135.00. Slaughter Does: Selection 1 120-180 lbs 80.00-95.00. Selection 3 55-140 lbs 50.00-90.00. Replacement Bucks: Registered Boer 235.00 Per Head. Selection 1 95-170 lbs 155.00-185.00. Slaughter Bucks: Selection 2 80-210 lbs 120.00-135.00. Selection 3 65-135 lbs 100.00-145.00.

WEEKLY COMMODITY GRAIN FUTURES TRENDS

Compared to last Friday: Soybeans .04 to .07 higher, Wheat unch to .05 lower, Corn .04 to .05 lower, Kansas City Wheat .04 to .06 lower, Soybean Meal 3.40 to 3.60 higher.

Daily Grain Futures Closes

	Mon.	Tues.	Wed.	Thu.	Fri.
Soybeans					
Nov	957 1/4	955 1/4	958 1/4	968 1/4	972 1/4
Jan	967 3/4	966	968 3/4	979	983
Mar	977	975 1/2	978 1/4	988	992 1/4
May	985 3/4	984 1/2	987 1/4	997	1001 1/4
Jul	993 1/4	991 3/4	994 3/4	1004 1/2	1009
Wheat					
Dec	444 3/4	448	442	440 3/4	443 1/2
Mar	463 1/4	465 1/2	460 1/2	459 1/2	462 3/4
May	476 1/2	478 1/4	474 1/4	473 3/4	476 3/4
Jul	489	490	486 1/4	486	490 1/2
Sep	504 1/2	505 1/4	501 1/2	501	505 3/4
Corn					
Dec	351 1/2	349 1/2	348 1/4	349 1/2	350
Mar	364 1/4	362 1/4	361 1/4	362 1/2	363 1/4
May	373	371 1/4	370 1/4	371 1/2	372
Jul	380 3/4	379	378 1/4	379 1/4	379 3/4
Sep	387 3/4	386 1/4	385 1/2	386 1/2	386 3/4
KC Wheat					
Dec	439 1/4	441 3/4	436	434 1/4	436 3/4
Mar	456 3/4	459 1/4	453 3/4	452	454 3/4
May	470 1/2	473	467 3/4	465 3/4	468 3/4
Jul	487 3/4	490 1/4	485 1/4	483 1/2	486 3/4
Sep	506 1/4	508 3/4	503 3/4	502 1/2	505 1/2
SB Meal					
Oct	309.10	307.30	306.90	312.90	315.00
Dec	313.60	311.50	311.00	316.90	319.20
Jan	315.70	313.50	313.10	319.00	321.40
Mar	318.80	316.60	316.10	321.80	324.20
Jul	321.20	319.10	318.50	324.20	326.70

WEEKLY COMMODITY FUTURES TRENDS

Compared to last week: Live Cattle 1.67 to 2.15 higher, Lean Hogs .70 to 3.77 higher, Feeder Cattle 1.73 go 2.93 higher.

Daily Futures Closes

	Mon.	Tues.	Wed.	Thu.	Fri.
Cattle					
Oct	107.82	109.10	109.07	110.15	111.02
Dec	113.42	114.90	114.92	116.05	116.92
Feb	117.22	118.52	118.92	119.77	120.72
Apr	118.92	120.12	120.25	121.10	121.60
Jun	112.07	113.52	113.70	114.47	115.20
Lean Hogs					
Oct	57.25	59.87	60.32	60.92	59.17
Dec	61.97	62.07	61.90	62.80	60.92
Feb	67.07	67.35	67.30	67.60	66.55
Apr	71.85	72.00	71.85	71.80	71.40
May	76.90	77.15	76.92	76.95	76.37
Fdr Cat					
Oct	150.35	152.42	152.10	153.57	153.95
Nov	151.60	154.30	153.50	154.85	155.75
Jan	149.40	152.00	151.02	152.57	153.70
Mar	147.37	149.87	149.00	150.55	151.65
Apr	147.47	149.60	148.90	150.37	151.15
Milk					
Oct	16.33	16.37	16.63	16.74	16.80
Nov	16.20	16.43	16.49	16.48	16.57
Dec	16.09	16.28	16.30	16.28	16.31

INTERIOR MISSOURI DIRECT HOGS

Weekly Receipts: 2663 Week ago: 2021 Year ago: 2414
Compared to last week, barrows and gilts 2.00 to 3.00 higher. Sows 5.00 to 8.00 higher.

BARROWS AND GILTS:

Base carcass meat price 40.00-44.00. Weekly top Fri 44.00

SOWS:

300-500 lbs. 24.00-30.00
Over 500 lbs. 27.00-35.00

Market News Hotline
1-573-522-9244

October 06, 2017

MISSOURI GRAIN WEEKLY TRENDS

Weekly Trends: Soybeans .04 to .27 higher, Wheat .06 lower to .26 higher, Corn .08 lower to .28 higher, Sorghum .11 lower to .09 higher.

Area	#1 Soybeans	#2 Soft Wheat	#2 Corn	#2 Grain Sorghum
Kansas City				
Friday**	9.08-9.23	3.73-3.83	3.17-3.18	5.44-5.46
Monday	8.97-9.12	3.69-3.80	3.13-3.14	5.37-5.39
Tuesday	8.75-9.10	3.78-3.83	3.11	5.33-5.35
Wednesday	8.78-9.13	3.72-3.87	3.08-3.10	5.32
Thursday	8.88-9.23	3.68-3.85	3.09-3.11	5.33-5.51
Friday	8.92-9.27	3.74-3.88	3.10	5.35-5.53
St. Louis				
Friday**	9.19-9.22	3.98-4.38	3.02-3.07	—
Monday	8.99-9.07	3.84-3.94	2.97-3.01	5.55
Tuesday	8.98-9.03	3.88-3.98	2.96	5.53-5.87
Wednesday	9.08-9.13	3.92-3.95	3.08-3.13	5.76
Thursday	9.38	4.00-4.11	3.21-3.25	—
Friday	9.44-9.46	4.03-4.24	3.30-3.32	—
Central				
Friday**	8.93	3.88-3.89	3.02-3.07	—
Monday	8.77-8.82	—	3.01-3.04	—
Tuesday	8.75	3.89	2.99-3.02	—
Wednesday	8.78	3.82-3.83	2.98-3.00	—
Thursday	8.88	3.81	2.99-3.02	—
Friday	8.92	3.84	3.00-3.02	—
S.E. MO				
Friday**	9.08-9.30	3.87	2.90-3.14	—
Monday	8.87-8.93	3.75	2.81-2.87	—
Tuesday	8.78-8.95	—	2.74-2.98	—
Wednesday	9.09-9.16	—	3.05-3.10	—
Thursday	9.24-9.30	—	3.13-3.14	—
Friday	9.23-9.37	—	3.10-3.19	—

Missouri Crop Progress and Condition Report
 (10/02/17)

Dry weather allowed crop harvesting to advance, with temperatures averaging 67.6 degrees, 4.2 degrees above normal. Precipitation averaged 0.17 inches statewide, 0.63 inches below normal. There were 6.6 days suitable for fieldwork for the week ending October 1. Topsoil moisture supply was rated 21 percent very short, 38 percent short, and 41 percent adequate. Subsoil moisture supply was rated 15 percent very short, 39 percent short, and 46 percent adequate. Corn mature reached 89 percent, up 9 percentage points from last week. Corn harvested for grain was 44 percent complete, compared to 53 percent for the 5-year average. Corn condition was rated 2 percent very poor, 5 percent poor, 26 percent fair, 51 percent good, and 16 percent excellent. Soybeans coloring reached 85 percent, compared to 79 percent for the 5-year average. Soybeans dropping leaves was at 54 percent, up 19 percentage points from last week. Soybean harvest was 13 percent complete, compared to 10 percent for the 5-year average. Soybean condition was rated 4 percent very poor, 5 percent poor, 25 percent fair, 54 percent good, and 12 percent excellent. Cotton with bolls opening reached 84 percent. Cotton harvest was 6 percent complete, compared to 8 percent for the 5-year average. Cotton condition was rated 2 percent very poor, 9 percent poor, 34 percent fair, 49 percent good, and 6 percent excellent. Rice harvest reached 65 percent. Sorghum harvested was 25 percent complete. Winter wheat planted reached 10 percent, compared to 9 percent for the 5-year average. Winter wheat emerged reached 3 percent. Pasture and range condition was rated 5 percent very poor, 13 percent poor, 43 percent fair, 37 percent good, and 2 percent excellent.