

Weekly Market Summary

Published by
Missouri Department of Agriculture
Division of Market Information & Outreach
Market News Program



Peter W. Hofherr, Director
 Loyd Wilson, Division Director
 Mike Davis, Editor
<http://www.mda.mo.gov>
<http://www.ams.usda.gov/marketnews.htm>

Bob Holden, Governor

Volume XXIV, Number 20 ♦ P.O. Box 630, Jefferson City, MO 65102 ♦ (573) 751-4211 ♦ Friday, May 14, 2004

MISSOURI WEEKLY FEEDER CATTLE WEIGHTED AVERAGE REPORT

Receipts 25,218; Week ago 20,180; Year ago 23,584
 Medium and Large 1 (Medium Flesh)

Fdr. STEERS:		Fdr. HEIFERS:		Hols. STEERS	
370 lbs.	137.80	368 lbs.	124.37	365 lbs.	104.86
456 lbs.	127.07	453 lbs.	118.49	448 lbs.	102.55
550 lbs.	119.85	543 lbs.	112.19	522 lbs.	91.37
650 lbs.	110.77	652 lbs.	104.26	644 lbs.	84.78
759 lbs.	103.85	747 lbs.	97.06	754 lbs.	80.85
813 lbs.	100.26	818 lbs.	98.79	848 lbs.	73.76
922 lbs.	93.83	951 lbs.	90.10	955 lbs.	75.25

SOUTHERN MISSOURI WEEKLY SUMMARY

(West Plains, Gainesville)

Receipts 6200; Week ago 4630; Year ago 3589

Compared to last week steers under 700 lbs and heifers under 600 lbs steady to 4.00 higher, heavier steers steady to 2.00 higher, heifers steady to weak. Slaughter cows steady to 1.00 lower, bulls steady.

STEERS:		HEIFERS:	
Medium and Large 1		Medium and Large 1	
350-400 lbs.	135.00-145.00	340-400 lbs.	118.00-128.00
400-450 lbs.	127.00-145.00	400-500 lbs.	110.00-122.00
450-500 lbs.	118.00-129.00	500-600 lbs.	105.00-117.00
500-600 lbs.	110.00-125.00	600-700 lbs.	97.00-107.00
600-700 lbs.	102.00-114.00	700-780 lbs.	88.50-99.00
700-800 lbs.	98.50-109.50		

Large 3 Holsteins

400-500 lbs.	95.50-107.00
500-550 lbs.	89.00-99.00
600-660 lbs.	84.00-90.00
750-840 lbs.	79.50-82.00

REPLACEMENT COWS: Medium and Large 1-2, 3 to 7 yrs, 1050-1450 lbs. 2nd-3rd stage, 700.00-950.00, per head.

COW & CALF PAIRS: Medium and Large 1-2, 6 to 7 yrs, some ss, 1050-1300 lbs with baby to 250 lb calves 1000.00-1260.00 per pair.

SLAUGHTER COWS: Breaking and Boning (70-85% lean) 49.00-56.00, high dressing 54.00-65.50. Lean (85-90%) 47.50-54.00, low dressing 42.00-47.50.

SLAUGHTER BULLS: Yield Grade 1-2, 1350-2200 lbs., 65.00-73.00, high dressing 75.00-78.00, low dressing 58.00-64.50.

SOUTHWEST MISSOURI WEEKLY SUMMARY

(Joplin, Springfield)

Feeder Cattle Receipts 8478, Week ago 6600, Year ago 6334
 Cows and Bulls Receipts 2300; Week ago 1900; Year ago 1400
 Dairy Cattle Receipts 868; Springfield 04-27-2004

Compared to last week steers and heifers sold steady to 1.00 higher, Slaughter cows and bulls steady to 1.00 lower.

STEERS:		HEIFERS:	
Medium and Large 1		Medium and Large 1	
300-400 lbs.	Scarce	300-400 lbs.	Scarce
400-500 lbs.	123.00-133.00	400-500 lbs.	109.00-127.00
500-600 lbs.	110.00-125.00	500-600 lbs.	103.00-116.00
600-700 lbs.	101.00-116.00	600-700 lbs.	98.00-110.00
700-800 lbs.	99.00-104.00	700-800 lbs.	89.25-99.75
800-900 lbs.	95.75-102.00	800-900 lbs.	99.20
900-1000 lbs.	92.50-95.00		90.10

HOLSTEINS:

Large Frame 3

300-400 lbs.	101.00-108.00
400-500 lbs.	99.00-109.00
500-600 lbs.	88.00-97.00
600-700 lbs.	82.00-88.00
700-800 lbs.	76.00-83.25
800-900 lbs.	75.00

REPLACEMENT COWS: Medium and Large 2, 900-1500 lbs, 2 yrs to ss, 1st to 3rd stage, 685.00-925.00 per head.

COW & CALF PAIRS: Medium and Large 1-2, 2 yrs to bm, 850-1200 lbs. baby to 400 lb calves, some rebred, 850.00-1300.00 per pair.

Dairy Cattle Sales

Springer Heifers: Supreme 2075.00-2600.00, Approved 1540.00-1950.00, Crossbred 1125.00-1650.00, Open Heifers; Approved 700-800 lbs 1140.00-1340.00, 600-700 lbs 1260.00, 500-600 lbs 950.00-1150.00, Bred Heifers 4-6 months Approved 1410.00-1750.00. Baby Calves: Holstein Heifers 260.00-540.00, Bulls 165.00-255.00.

SLAUGHTER COWS: Breaking and Boning (70-85% lean) 54.00-60.00, high dressing 59.50-64.00. Lean (85-90%) 46.00-52.00.

SLAUGHTER BULLS: Yield Grade 1-2, 1400-2370 lbs., 67.00-74.25, high dressing 76.00-79.75.

INTERIOR MISSOURI DIRECT HOGS

Weekly Receipts 8415; Week ago 8588; Year ago 14,458
 Compared to last weeks close barrows and gilts 3.00-5.00 higher.
 Sows .50-1.00 higher.

BARROWS AND GILTS:

Base carcass meat prices 77.00.
 Weekly top price Wednesday 79.00

SOWS:

300-500 lbs 41.00-45.00
 Over 500 lbs 46.00-47.50.

The Weekly Market Summary is available to anyone for an \$18.00 annual subscription fee. To subscribe, send your check or money order to: Weekly Market Summary, Missouri Department of Agriculture, P.O. Box 630, Jefferson City, MO 65102.

WEST CENTRAL MISSOURI WEEKLY SUMMARY

(Kingsville and Sedalia)

Receipts 3107; Week ago 2113; Year ago 2212
 Compared to last week steers 2.00-5.00 higher, heifers mostly 1.00-3.00 higher with instances 4.00-6.00 higher. Slaughter cows and bulls 1.00-2.00 lower.

FEEDER STEERS:

Medium and Large 1 & 1-2

300-400 lbs. 128.00-146.00
 400-500 lbs. 121.00-137.50
 500-600 lbs. 116.00-129.00
 600-700 lbs. 106.00-125.50
 700-800 lbs. 101.00-113.00
 800-900 lbs. 94.00-98.85

FEEDER HEIFERS:

Medium and Large 1 & 1-2

300-400 lbs. 118.00-140.00
 400-500 lbs. 114.00-129.75
 500-600 lbs. 106.50-117.50
 600-700 lbs. 104.00-111.50
 700-800 lbs. 98.25-106.50

REPLACEMENT COWS:

Medium and Large 1-2, 4 yrs to 7 yrs, 1135-1600 lbs 2nd and 3rd stage 825.00-930.00 per head.

SLAUGHTER COWS:

Breaking and Boning (70-85% lean) 49.50-55.75, high dressing 55.75-61.00. Lean (85-90%) 53.50, low dressing 48.00.

COW & CALF PAIRS: Medium and Large 1-2, 3 to 5 yrs, 1200-1385 lbs with baby calves 950.00-1175.00 per pair.

SLAUGHTER BULLS: Yield Grade 1-2, 1285-2275 lbs. 62.00-68.25, high dressing 69.25-75.00.

EAST CENTRAL MISSOURI WEEKLY SUMMARY

(Bowling Green, Kingdom City, and Boonville)

Receipts 3478; Week ago 3800; Year ago 3042
 Compared to last week steers and heifers steady to firm spots 2.00-4.00 higher. Slaughter cows steady to 2.00 higher.

FEEDER STEERS:

Medium and Large 1 & 1-2

300-400 lbs. 130.00-153.00
 400-500 lbs. 120.00-140.00
 500-600 lbs. 110.00-128.00
 600-700 lbs. 107.00-122.50
 700-800 lbs. 101.00-110.75
 800-850 lbs. 99.25

FEEDER HEIFERS:

Medium and Large 1 & 1-2

300-400 lbs. 120.00-134.00
 400-500 lbs. 110.00-129.00
 500-600 lbs. 105.00-126.50
 600-700 lbs. 100.50-118.50
 700-775 lbs. Fleshy 95.00

SLAUGHTER STEERS: Choice 2-4 Scarce

SLAUGHTER COWS: Breaking, Boning, and Lean (70-90% lean) 48.00-58.00, high dressing 54.50-65.25, low dressing 42.00-54.00.

SLAUGHTER HEIFERS: Choice 2-4 Scarce

SLAUGHTER BULLS: Yield Grade 1-2, 1400-2600 lbs., 63.50-69.50, high dressing 69.50-73.50.

NORTHEAST MISSOURI WEEKLY SUMMARY

(Palmyra, New Cambria, and Green City)

Feeder Cattle Receipts 342; Week ago 3925; Year ago 251
 Slaughter Cattle Receipts 64; Week ago 93; Year ago 155
 Compared to last week steers and heifers not well tested. Slaughter cows 2.00-3.00 lower, Slaughter steers and heifers steady-1.00 higher.

FEEDER STEERS:

Medium and Large 1

300-400 lbs. Scarce
 400-500 lbs. Scarce
 500-600 lbs. 113.00-117.00
 600-700 lbs. 107.25-115.00
 700-800 lbs. Scarce
 800-900 lbs. Scarce

FEEDER HEIFERS:

Medium and Large 1 & 1-2

300-400 lbs. 130.00-133.00
 400-500 lbs. 117.00-126.00
 500-600 lbs. 106.00-117.00
 600-700 lbs. Scarce
 750-800 lbs. 99.00-99.60

SLAUGHTER STEERS: Choice 2-3, 1500-1500 lbs., 91.75-94.10.

SLAUGHTER COWS: Breaking and Boning (70-85% lean) 51.50-58.00, low dressing 46.00-51.00.

SLAUGHTER HEIFERS: Choice 2-3, 1000-1300 lbs., 90.25-94.00.

SLAUGHTER BULLS: Yield Grade 1-2, 1350-1650 lbs. 62.50-69.75.

SOUTHEAST MISSOURI WEEKLY SUMMARY

(Patton Junction and Fruitland)

Receipts 1154; Week ago 1049; Year ago 1117
 Compared to last week steers and heifers over 500 lbs 1.00 to 3.00 higher, under 500 lbs 2.00 lower. Slaughter Cows and Bulls 3.00 lower.

FEEDER STEERS:

Medium and Large 1-2

250-300 lbs 130.00-139.00
 300-400 lbs. 119.00-135.00
 400-500 lbs. 115.00-127.00
 500-600 lbs. 105.00-121.00
 600-650 lbs. 97.50-110.00
 700-775 lbs. 97.00-105.00
 800-850 lbs. 87.00-98.50

FEEDER HEIFERS:

Medium and Large 1-2

250-300 lbs. 123.00-127.00
 300-400 lbs. 107.50-123.00
 400-500 lbs. 103.00-115.00
 500-600 lbs. 102.00-113.00
 600-700 lbs. 91.00-100.00
 700-800 lbs. 84.00-93.00
 Pkg 890 lbs. 83.50

REPLACEMENT COWS:

Medium and Large 1-2, 2-7 yrs 845-1290 lbs in 2nd and 3rd stage pregnancy 620.00-1000.00 per head.

SLAUGHTER COWS:

Breaking and Boning (70-85% lean) 47.75-51.25, high dressing 52.00-56.00, Lean (85-90%) 36.00-41.50.

COW & CALF PAIRS: Medium and Large 1-2, 2-7 yrs, 945-1330 lbs with 100-350 lbs calves 730.00-1125.00 per pair.

SLAUGHTER BULLS: Yield Grade 1-2, 1205-2230 lbs 61.00-70.00, high dressing 68.00-71.00, low dressing 56.00-60.00.

SOUTH CENTRAL MISSOURI WEEKLY SUMMARY

(Cuba and Vienna)

Receipts 3065; Week ago 2783; Year ago 2010
 Compared to last week steers and heifers unevenly steady. Slaughter Cows steady to 1.00 higher.

FEEDER STEERS:

Medium and Large 1

300-400 lbs. 130.00-147.00
 400-500 lbs. 120.00-137.00
 500-600 lbs. 113.00-126.50
 600-700 lbs. 106.00-120.00

FEEDER HEIFERS:

Medium and Large 1

300-400 lbs. 118.00-127.00
 400-500 lbs. 110.00-131.00
 500-600 lbs. 107.00-117.75
 600-650 lbs. 102.00-108.00

REPLACEMENT COWS: Medium and Large 1-2, 2 yrs to 8 yrs, 1000-1350 lbs, 2nd to 3rd stage, 750.00-930.00 per head

SLAUGHTER COWS: Breaking and Boning (70-85% lean) 52.00-57.00, high dressing 57.60-61.75, Lean (85-90%) 49.00-55.50, low dressing 44.00-49.00.

COW & CALF PAIRS: Scarce

SLAUGHTER BULLS: Yield Grade 1-2, 1200-2100 lbs, 63.50-69.50, high dressing 70.25-75.25, low dressing 57.00-61.00.

**MISSOURI WEEKLY DIRECT
SLAUGHTER CATTLE REPORT**

Weekly Receipts 600; Week ago 1000; Year ago 1800
 Trade moderate to active. No confirmed live sales, dressed sales on a grid basis steady to 3.00 lower.

STEERS:
 Live sales: No Sales

STEERS AND HEIFERS:
 Carcass sales: No Sales

HEIFERS:
 Live Sales: No Sales

GRADE AND WEIGHT (Grid):
 Choice 550-950 lbs 145.00-154.00
 Select 550-950 lbs 127.00-134.00

**MISSOURI WEEKLY DIRECT
WEANER AND FEEDER PIG REPORT**

Receipts: 14,115 (FOB 3,488, Delivered 10,627. Compared to last week, weaner pigs mostly steady to instances of 1.00 lower, feeder pigs steady to 1.00 lower. Moderate demand for moderate supply.

Early weaned pigs 10 lb base weights
Fob the farm, 9% negotiated
3,488 head 10 lbs 27.00-33.00 weighted average price 30.91

Early weaned pigs 10 lb base weights
Delivered, 0% negotiated (5745 head Ark to IA, NEB)
8,267 head 26.00-33.32 weighted average 10 lbs 30.96.

Feeder pigs in all lot sizes
Delivered 100% negotiated
2,360 head 40-50 lbs 45.00-49.00, weighted average 44.63 lbs 47.04.

Feeder pigs in all lot sizes.
FOB the farm, No sales to report.

WEEKLY LIVESTOCK SLAUGHTER

	<u>CATTLE</u>	<u>HOGS</u>	<u>SHEEP</u>
Week to date	690,000	1,826,000	39,000
Last week	690,000	1,840,000	44,000
Last Year	748,000	1,807,000	45,000
2004 yr. to date	11,795,000	37,611,000	1,026,000
2003 yr. to date	12,881,000	36,928,000	1,084,000

MIDWEST SHEEP REVIEW

Slaughter Receipts

This week 39,000; Week ago 44,000; Year ago 45,000

Slaughter Lambs steady Slaughter Ewes: Utility and Good
Slaughter Ewes steady 1-3 35.00-40.00, Cull 1 25.00-
Feeder Lambs steady 35.00

Slaughter Lambs: Choice and Feeder Lambs: Medium and Large
Prime 2-3 90-150 lbs shorn 95.00- 1-2 60-80 lbs 105.00-120.00, 80-
100.00, woolled 90.00-95.00. 100 lbs 95.00-105.00.

WEEKLY HAY SUMMARY

Many farmers are fighting trying to get hay dry enough to bale between showers. A lot of hay being baled and progress is reaching farther north. Warm days and plenty of moisture for most areas have crops ahead of the average year. First cutting of Alfalfa is getting along at a good pace and some farmers even talking of cutting wheat hay. Unlike last year some farmers are putting up some higher quality hay this year, but due to moisture battles and having to get it off the new growth most have been wrapping this hay. The state is starting to see a few sales of new crop but not enough for a good test. The undertone is pointing towards a higher market. Hay supply is moderate, mostly old crop hay; demand is light and old crop prices are steady, new crop not well tested. The Missouri Department of Agriculture has a hay hotline available, to be listed, or for a directory, call 1-800-877-4HAY(4429). (All prices per ton unless specified and most reflect delivered price) Supreme quality alfalfa (RFV>185)100.00-140.00, Premium alfalfa (RFV170-180) 80.00-110.00, Fair to Good alfalfa (RFV130-170) Round bales 35.00-70.00, Small and Big squares 70.00-100.00, Fair to good quality prairie hay 60.00-85.00, Good quality brome 50.00-85.00, Good quality timothy hay 3.00-3.50 per small square bale, Good quality red clover hay 30.00-60.00, Good quality mixed grass hay 12.00-25.00 per round bale, Fair quality large round bales fescue 10.00-20.00 per bale. Fair quality large round bales fescue 10.00-20.00 per bale. Wheat straw 1.50-2.50 per small square bale.

MIDWEST EGG REVIEW

Prices on large steady, medium steady, small steady. IOWA-MINNESOTA-WISCONSIN: Prices paid to producers. (cents per dz.) Large .38-.45, Medium .33-.37, Small .19-.21.

**WHOLESALE FEEDSTUFFS PRICES
(DOLLARS PER TON-BULK BASIS)**

Area	Soybean Meal 48% Solvent	Cottonseed Meal 41% Solvent	Meat Meal	Wheat Middlings
Kansas City	330.00	227.00	222.50	73.25
St. Louis	324.50	224.00	230.00	77.50

By-Product Feed Prices

Soy Hulls Mexico, MO Not available till June, Alfalfa Pellets 17% St Louis, MO 130.00, Distillers Grain dried Macon MO 139.00, corn Gluten Feed pelleted, Decatur, Il 90.00, Brewers Grain pressed 70% moisture, St Louis, MO 31.00. Prices per ton.

WEEKLY COMMODITY GRAIN FUTURES TRENDS

Compared to last Friday: Soybeans .62 to .99 lower, Wheat .39 to .55 lower, Corn .19 to .21 lower, KC Wheat .39 to .52 lower, Soybean Meal 21.90 to 27.20 lower. (all price trends approximate ranges).

Daily Grain Futures Closes

	Mon.	Tues.	Wed.	Thurs.	Fri.
Soybeans					
May	1040 1/2	1053 1/2	991 1/2	1013	969
Jul	1012 1/2	1022 1/4	972 1/4	982 1/2	932 1/2
Aug	944 3/4	951 1/2	904 1/2	917 3/4	869
Sept	818 1/2	818 3/4	783	792 1/2	762 1/2
Nov	752 1/2	754 3/4	730 1/2	736	714
Wheat					
May	378 1/2	370	362	362 1/4	354
Jul	385 1/4	379	369 1/2	369 1/4	358 1/2
Sept	391 3/4	385 1/2	375 3/4	376	365 1/4
Dec	401 1/4	396	386	386 1/4	375 1/2
Mar	407 3/4	402	392	392	382
Corn					
May	295 1/2	296	294 1/2	289 3/4	286 1/2
Jul	298 1/2	299 1/4	297 1/2	295 1/4	292 1/4
Sept	294 3/4	295 1/4	293	291 1/4	287 1/4
Dec	292	293 1/2	290 3/4	289 1/2	285
Mar	297	298 1/2	295 1/4	294	289 1/2
KC Wheat					
May	402	392 1/2	385	391	380
Jul	407	398	392 1/4	392 1/2	379 3/4
Sept	413 1/2	403 1/2	397 1/2	397 1/4	385
Dec	422	412 1/2	404	404 1/4	392 1/2
Mar	426 1/2	418 1/2	410	409	398
SB Meal					
May	328.90	333.30	314.00	324.50	306.80
Jul	324.30	328.00	309.00	316.00	298.80
Aug	308.00	310.20	293.80	298.20	283.90
Sept	281.80	282.70	268.80	271.50	259.30
Oct	244.80	245.60	236.50	238.10	229

WEEKLY COMMODITY FUTURES TRENDS

Compared to last Friday: Live Cattle .23 to 2.30 lower, except Dec .85 higher, Lean Hogs uneven, 1.10 lower to 4.13 higher, Pork Bellies .90 to 6.00 higher, Feeder Cattle May .80 lower, others .05 to .95 higher.

Daily Futures Closes

	Mon.	Tues.	Wed.	Thurs.	Fri.
Cattle					
May	88.00	87.90	87.90	86.00	86.00
Jun	84.62	83.85	82.77	82.12	82.07
Aug	86.70	85.82	85.10	84.27	83.75
Oct	84.72	84.32	84.12	84.05	84.37
Dec	83.52	83.50	83.70	83.65	83.90
Lean Hogs					
May	79.37	81.37	82.25	82.25	82.20
Jun	74.50	76.50	75.17	75.90	75.72
Jul	75.87	77.05	75.62	75.45	74.57
Aug	73.00	74.37	72.70	72.92	72.40
Oct	61.60	62.22	61.60	61.75	61.75
Prk Bel					
May	122.60	122.97	122.20	123.30	125.25
Jul	116.65	116.75	114.57	115.82	116.65
Aug	110.50	110.52	108.42	109.15	110.25
Feb	96.00	98.90	98.50	99.00	99.00
Mar	87.02	90.02	90.02	93.02	93.02
Fdr Cat					
May	103.42	103.40	120.67	102.80	103.22
Aug	100.10	100.10	99.65	99.60	99.80
Sep	98.80	98.80	98.50	98.40	98.95
Oct	98.30	98.35	97.90	98.00	98.35
Nov	97.75	87.50	97.07	97.25	97.45
Milk					
May	20.45	20.39	20.39	20.22	20.40
Jun	17.49	16.74	16.89	16.14	15.85
Jul	15.85	15.10	15.43	14.75	14.52

WEEKLY MARKET SUMMARY
 (USPS 597250)
 To be published weekly by the
 Missouri Department of Agriculture
 1616 Missouri Blvd.
 Jefferson City, MO 65109

Postmaster: Send address changes to:
 Missouri Department of Agriculture
 P.O. Box 630
 Jefferson City, MO 65102

Periodicals postage paid at
 Jefferson City, Missouri

Market News Hotline
1-573-522-9244

May 14, 2004

MISSOURI GRAIN WEEKLY TRENDS

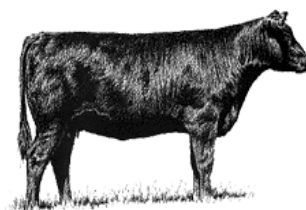
Soybeans .94 to 1.05 lower
 Wheat .48 to .53 lower
 Corn .15 to .19 lower
 Grain Sorghum .34 to .44 lower

Weekly Missouri Selected Cash Grain Bids

Area	#1 Soybean	#2 Soft Wheat	#2 Corn	#2 Grain Sorghum
Kansas City				
Monday	10.38	4.02	2.84	4.88
Tuesday	10.50	3.93	2.83-2.84	4.88
Wednesday	10.00	3.87	2.83	4.86
Thursday	10.13	3.83	2.80	4.81
Friday	9.65	3.70	2.77	4.75
St. Louis				
Monday	10.39-10.43	3.80-3.82	3.06	5.05
Tuesday	10.54-10.58	3.74-3.76	3.07	5.03
Wednesday	10.01-10.07	3.64-3.67	3.02-3.06	4.94
Thursday	10.12-10.18	3.63-3.67	3.00-3.04	4.89
Friday	9.49-9.57	3.55-3.56	3.01-3.02	4.89
Central				
Monday	10.09-10.13	3.41-3.57	2.78-2.81	4.48
Tuesday	10.19-10.22	3.35-3.51	2.79-2.81	4.48
Wednesday	9.69-9.72	3.20-3.41	2.78-2.80	4.46
Thursday	9.79-9.83	3.25-3.41	2.75-2.77	4.41
Friday	9.29-9.33	3.19-3.31	2.72-2.74	4.35
S.E. MO				
Monday	10.31-10.37	3.77-3.85	2.94-2.97	4.75-5.12
Tuesday	10.41-10.47	3.72-3.79	2.96-2.97	4.76-5.10
Wednesday	9.91-9.96	3.56-3.63	2.94-2.96	4.73-5.08
Thursday	10.04-10.08	3.62-3.63	2.92-2.95	4.69-5.03
Friday	9.53-9.57	3.51-3.52	2.90-2.92	4.62-4.98

(PRICES PER BU. EXCEPT GR. SORG. PER CWT)
 *NEW CROP

“Show-Me Select” Bred Heifer Sales



Friday May 21, 2004 – 7:00 p.m.
Joplin Regional Stockyards - Carthage, MO
I-44 East of Carthage, MO Exit 22

Selling approximately 260 bred heifers, 90 percent black or BWF. Breeds and crosses include: Angus, Brangus, Gelbvieh, Hereford, and Simmental. Many are synchronized and AI bred. Heifers will calve from mid-August to November 30th and will be pregnancy checked within 30 days of the sale. Heifers will be sorted into uniform lots by breed, color, size, and calving dates.

Consignors include: John Massey, Carrier Farms, Robert L. Hart, John Wheeler, C&M Angus, Kleiboeker Farms, Hideout Springs, Robert Wolf, Circle A Ranch, Potts Farm, Northridge Farm, and Quinton Bauer-Steve Weldy

More Information Contact: Greg Onstott 573-751-7766 or 573-690-7125.