

Weekly Market Summary

Published by:
Missouri Department of Agriculture
Ag Business Development Division
Market News Program



Chris Chinn, Director
 Ken Struempf, Division Director
 Tony Hancock, Editor
 agmarketnews.mo.gov
 http://www.ams.usda.gov/

Eric R. Greitens, Governor

Volume XXXVII, Number 14 ♦ P.O. Box 630, Jefferson City, MO 65102 ♦ (573) 751-4211 ♦ Friday April 07, 2017

MISSOURI WEEKLY FEEDER CATTLE WEIGHTED AVERAGE REPORT

Receipts: 24,911 Week ago: 29,842 Year ago: 36,137
 Steers and Heifers Medium and Large 1 Hols. Large 3

Fdr. STEERS:		Fdr. HEIFERS:		Hols. STEERS	
357 lbs.	176.48	365 lbs.	152.35	529 lbs.	81.02
456 lbs.	171.27	452 lbs.	147.15	991 lbs.	73.00
544 lbs.	161.75	548 lbs.	139.00	1025 lbs.	78.00
647 lbs.	149.22	639 lbs.	133.04		
751 lbs.	135.62	731 lbs.	124.87		
843 lbs.	128.46	851 lbs.	116.74		
918 lbs.	125.67				

SOUTHERN MISSOURI WEEKLY SUMMARY

(West Plains, Ava)

Receipts: 5098 Weeks ago: 5256 Year ago: 4868

Compared to last week, feeders uneven from 4.00 lower to 2.00 higher, with the advance at the first part of the week. Slaughter cows and bulls steady to 2.00 higher.

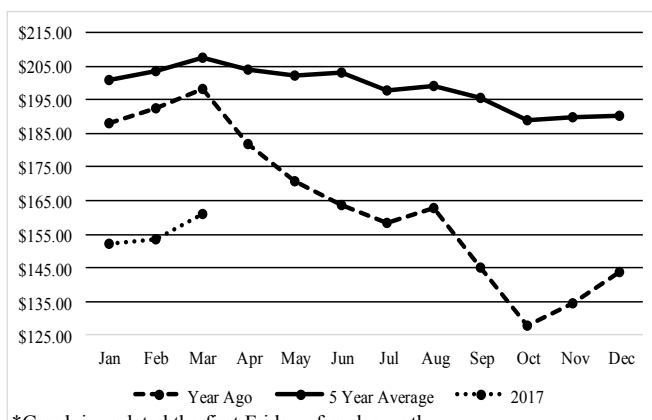
STEERS:		HEIFERS:	
Medium and Large 1		Medium and Large 1	
350-400 lbs.	178.00-185.00	350-400 lbs.	148.00-159.00
400-500 lbs.	155.00-187.00	400-500 lbs.	135.00-154.00
500-600 lbs.	145.00-172.00	500-600 lbs.	128.00-143.50
600-700 lbs.	137.00-149.00	600-700 lbs.	120.00-135.00
700-800 lbs.	127.50-136.00	700-800 lbs.	121.00-126.50
800-850 lbs.	126.00-128.75		

Holsteins:		SLAUGHTER COWS:	
Large 3		Breaking and Boning (70-85% lean) 63.50-72.00, high dressing 68.00-78.00. Lean (85-90%) 55.00-66.50	
Pkg 513 lbs.	82.50		
Pkg 678 lbs.	75.00		

SLAUGHTER BULLS:		REPLACEMENT COWS:	
Yield Grade 1-2 1135-2360 lbs. 87.50-98.00, high dressing 97.00-106.00, low dressing 72.50-90.00	Medium and Large 1-2 2-6 yrs 940-1960 lbs 2nd to 3rd stage 1000.00-1350.00, 1st stage 950.00-1100.00; 7 yrs to short solid 1120-1412 lbs 2nd to 3rd stage 1000.00-1150.00 per head		
<u>COW & CALF PAIRS:</u> Medium and Large 1-2 2-7 yrs 885-1240 lbs with 100-300 lb calves 1250.00-1600.00; short solid to broken mouth 1053-1225 lb with 125-150 lb calves 1250.00-1300.00 per pair			

The Weekly Market Summary is available to anyone for a \$25.00 annual subscription fee. To subscribe, send your check or money order to: Weekly Market Summary, Missouri Department of Agriculture, P.O. Box 630, Jefferson City, MO 65102.

Historical Feeder Steers Medium and Large 1 500-600 lbs. Weighted Average



*Graph is updated the first Friday of each month.

Year Ago Slaughter Steers and Heifers:

Northeast Missouri: Steers: Choice 2-3 1250-1475 lbs. 131.75-134.50
 Heifers: Choice 2-3 1100-1400 lbs. 130.00-133.75

East Central Missouri: few Choice 2-4 120.00-130.00

SOUTHWEST MISSOURI WEEKLY SUMMARY

(Joplin and Springfield)

Feeder Cattle Receipts: 5853 Week ago: 6155 Year ago: 9279

Cow and Bull Receipts: 1122 Week ago: 1244 Year ago: 1460

Compared to last week, feeders steady to 5.00 lower, spots 10.00 lower on calves last week. Slaughter cows and slaughter bulls steady to 5.00 higher with the advance the last part of the week.

STEERS:		HEIFERS:	
Medium and Large 1		Medium and Large 1	
300-400 lbs.	170.00-190.00	300-400 lbs.	147.50-167.00
400-500 lbs.	155.00-195.00	400-500 lbs.	135.00-156.00
500-600 lbs.	140.00-175.00	500-600 lbs.	122.00-147.50
600-700 lbs.	137.00-160.00	600-700 lbs.	120.00-138.00
700-800 lbs.	125.50-143.00	700-800 lbs.	115.00-126.00
800-900 lbs.	123.25-134.00		

HOLSTEINS:		SLAUGHTER COWS:	
Large 3		Breaking and Boning (70-85% lean) 65.00-75.00, high dressing 68.50-81.50. Lean (85-90%) 53.00-67.50	
Pkg 226 lbs.	102.50		
Pkg 354 lbs.	98.00		
Pkg 420 lbs.	90.00		
Pkg 504 lbs.	80.00		
Pkg 564 lbs.	81.00		
Pkg 1025 lbs.	78.00		

REPLACEMENT COWS:		COW & CALF PAIRS:	
Medium and Large 1-2 2 yrs to short solid 980-1360 lbs 2nd to 3rd stage 1100.00-1535.00 per head	Medium and Large 1-2 2-6 yrs 1100-1290 lbs with babies to 160 lb calves 1325.00-1350.00 per pair		

WEST CENTRAL MISSOURI WEEKLY SUMMARY

(Sedalia, Kingsville, Butler)

Receipts: 2180 Week Ago: 3761 Year ago: 4539

Compared to last week, feeders sold mostly steady. Slaughter cows firm.

FEEDER STEERS:
Medium and Large 1400-500 lbs. 162.50-176.00
500-600 lbs. 153.00-174.00
600-700 lbs. 145.00-160.00
700-800 lbs. 126.00-138.50
800-900 lbs. 124.75-131.85FEEDER HEIFERS:
Medium and Large 1300-400 lbs. 154.00-162.00
400-500 lbs. 138.00-149.00
500-600 lbs. 129.00-142.00
600-700 lbs. 120.25-131.00
800-900 lbs. 120.50SLAUGHTER BULLS: Yield
Grade 1-2 1330-2275 lbs 89.00-
97.00, high dressing 97.00-100.00
low dressing 75.50-83.50SLAUGHTER COWS: Breaking
and Boning (70-85% lean)
63.50-74.00. Lean (85-90%)
63.00-69.00COW & CALF PAIRS: Medium
and Large 1-2 3-6 yrs 1050-1250
lbs with newborn to 250 lb calves
1525.00-1950.00 per pairREPLACEMENT COWS:
Medium and Large 1-2 2 yrs to
short solid 950-1225 lbs 2nd to
3rd stage 1000.00-1300.00**EAST CENTRAL MISSOURI WEEKLY SUMMARY**

(Bowling Green, Kingdom City, Macon, Boonville)

Receipts: 2538 Week ago: 6832 Year ago: 5474

Compared to last week, feeders steady to 5.00 lower, instances 10.00 lower on 500 lb steers. Slaughter cows steady to firm.

FEEDER STEERS:
Medium and Large 1400-500 lbs. 173.00-182.00
500-600 lbs. 153.00-171.00
600-700 lbs. 145.00-154.00
700-800 lbs. 133.00-142.75
800-900 lbs. 123.60-126.00FEEDER HEIFERS:
Medium and Large 1300-400 lbs. 145.00-160.00
400-500 lbs. 143.00-160.00
500-600 lbs. 136.00-146.00
600-700 lbs. 128.00-137.00
700-800 lbs. 123.00-128.00SLAUGHTER STEERS and
HEIFERS: High Choice 3-4
1250-1450 lbs 130.00-132.75.
Select and Choice 1-2 1050-1400
lbs 119.00-128.50SLAUGHTER COWS: Breaking
and Boning, (70-85% lean) Average
dressing 65.00-72.50, high
dressing 72.50-78.00, Lean (85-
90%) 60.00-68.00REPLACEMENT COWS: ScarceSLAUGHTER BULLS: Yield
Grade 1-2 1200-2550 lbs 88.50-
99.00, hi dressing 100.00-111.00**NORTHEAST MISSOURI WEEKLY SUMMARY**

(Palmyra, Unionville, Green City, New Cambria)

Feeder Cattle Receipts: 5390 Week ago: 2884 Year ago: 7282

Slaughter Cattle Receipts: 44 Week ago: 54 Year ago: 29

Compared to two weeks ago, feeders 1.00 to 5.00 higher Slaughter cows steady. Compared to last week, slaughter steers and heifers 4.00 to 5.00 higher.

FEEDER STEERS:
Medium and Large 1400-500 lbs. 175.00-196.00
500-600 lbs. 163.50-177.50
600-700 lbs. 145.50-160.00
700-800 lbs. 137.75-147.75
800-900 lbs. 131.00-132.00FEEDER HEIFERS:
Medium and Large 1400-500 lbs. 158.00-164.50
500-600 lbs. 138.00-152.25
600-700 lbs. 127.50-145.25
700-800 lbs. 123.75-132.25
800-900 lbs. 116.00-116.85SLAUGHTER STEERS:
Choice 2-3 1200-1400 lbs 130.00-
131.00SLAUGHTER COWS: Breaking
and Boning (75-85% lean) 66.00-
74.00, high dressing 71.50-82.00
Lean (85-90%) 61.50-72.00SLAUGHTER HEIFERS:
Choice 2-3 1150-1350 lbs 127.25-
130.25SLAUGHTER BULLS: Yield
Grade 1-2 1400-2300 lbs 90.50-
100.00COW & CALF PAIRS: Medium
and Large 1-2 2-6 yrs 850-1150
lbs with newborn to 250 lb calves
1825.00-2025.00 per pairREPLACEMENT COWS: Me-
dium and Large 1-2 heifers 950-
1050 lbs 3rd stage 1875.00-
1925.00 per head**SOUTHEAST MISSOURI WEEKLY SUMMARY**

(Farmington, Patton)

Receipts: 3078 Week ago: 2104 Year ago: 2579

Compared to a week ago, feeders steady to 8.00 lower. Slaughter cows 1.00 lower. Slaughter bulls 4.00 lower.

FEEDER STEERS:
Medium and Large 1300-400 lbs. 159.00-182.50
400-500 lbs. 149.00-179.50
500-600 lbs. 136.00-166.50
600-700 lbs. 125.00-150.00
700-800 lbs. 122.00-134.00FEEDER HEIFERS:
Medium and Large 1300-400 lbs. 140.50-159.00
400-500 lbs. 131.00-161.00
500-600 lbs. 122.50-140.00
600-700 lbs. 115.00-124.00
700-800 lbs. 104.00-112.00REPLACEMENT COWS: Medium
and Large 1-2 5 yrs to short solid
910-1445 lbs 2nd to 3rd stage
900.00-1285.00 per headSLAUGHTER COWS: Breaking
and Boning (75-85% lean) 55.00
-66.50 Lean (85-90% lean) 45.00
-54.50COW & CALF PAIRS: Medium
and Large 1-2 2-7 yrs 820-1250 lbs
wih 70-310 lb calves 1130.00-
1900.00 per pairSLAUGHTER BULLS: Yield
Grade 1-2 few 1220-2420 lbs
78.50-86.00, high dressing 90.00
-105.00**SOUTH CENTRAL MISSOURI WEEKLY SUMMARY**

(Cuba, Vienna)

Receipts: 1546 Week ago: 2351 Year ago: 2409

Compared to last week, feeders steady to 6.00 lower. Slaughter cows steady to 1.00 lower.

FEEDER STEERS:
Medium and Large 1300-400 lbs. 172.00-189.00
400-500 lbs. 160.00-180.25
500-600 lbs. 150.00-180.00
600-700 lbs. 139.00-149.00FEEDER HEIFERS:
Medium and Large 1300-400 lbs. 143.00-159.00
400-500 lbs. 137.50-153.50
500-600 lbs. 133.00-145.00
600-700 lbs. 121.00-122.50
Pkg 815 lbs. 117.00REPLACEMENT COWS: Medium
and Large 1-2 few 2 yrs to short solid
1050-1550 lbs 2nd to 3rd stage
985.00-1375.00 per headSLAUGHTER COWS: Break-
ing and Boning (70-85% lean)
63.50-70.00, high dressing 69.00
-73.50. Lean (85-90%) 60.00-
66.00COW & CALF PAIRS: ScarceSLAUGHTER BULLS: Yield
Grade 1-2 1400-2150 lbs 88.00-
95.00, low dressing 81.50-88.00**NORTHWEST MISSOURI WEEKLY SUMMARY**

(St Joseph)

Receipts: 1287 Weeks ago: 1572 Year ago: 2231

Compared to last week, feeders steady to 3.00 lower. Slaughter cows steady. Slaughter bulls mostly steady.

FEEDER STEERS:
Medium and Large 1400-500 lbs. 162.00-177.00
500-600 lbs. 157.00-174.00
600-700 lbs. 142.50-160.00
700-800 lbs. 130.00-145.00
900-1000 lbs. 117.00-120.50FEEDER HEIFERS:
Medium and Large 1400-500 lbs. 145.00-162.50
500-550 lbs. 139.00-147.00
600-700 lbs. 130.00-142.00
700-800 lbs. 118.00-120.00SLAUGHTER BULLS:
Yield grade 1-2 1255-2315 lbs
82.00-90.00, high dressing 92.00
-102.00, low dressing 70.00-
75.00SLAUGHTER COWS:
Breaking and Boning (70-85% lean)
59.00-72.00, high dressing 69.50-
74.50. Lean (85-90%) 45.00-67.00BRED COWS: Medium and
Large 1 2-3 yrs 910-1010 lbs 1st
to 2nd stage 1200.00-1300.00COW-CALF PAIRS: Medium and
Large 1 2 yrs 1000-1100 lbs with
150-200 lb calves 2250.00 per pair
per head

MISSOURI WEEKLY DIRECT WEANER AND FEEDER PIG REPORT

Receipts: 3758 Weaner pigs mostly steady. Feeder pigs no sales reported. Prices per head. Early weaned pigs 10 lb. base weights FOB the farm 0% negotiated, 2920 head, 10 lbs, 36.18-38.00, weighted average 37.10. Early weaned pigs 10 lbs base weights delivered 0% negotiated, 838 head, 10 lbs 35.76-37.15, weighted average 36.83

**WHOLESALE FEEDSTUFFS PRICES
(DOLLARS PER TON-BULK BASIS)**

Area	Soybean Meal 48% Solvent	Cottonseed Meal 41% Solvent	Meat Meal	Wheat Middlings
Kansas City	287.10	242.50	247.50	105.00
St. Louis	320.00	N/A	275.00	92.50

**MISSOURI WEEKLY DIRECT
SLAUGHTER CATTLE REPORT**

Weekly Receipts: 160 Week ago: 240 Year ago: 120
Trading from last Friday through Friday morning remains light as bids are lower.

LIVE STEERS & HEIFERS: No sales reported
DRESSED STEERS & HEIFERS: 2 loads delivered 203.00

GRADE AND WEIGHT (Grid):
1 load 205.00, 1 load 207.00

By-Product Feed Prices

Alfalfa Pellets, St. Louis MO 235.00; Corn Gluten Feed pelleted, Butler, MO FOB out; Distillers Grain Dried, FOB Carrollton, MO 105.00; Soy Hulls Kansas City, MO 123.00. Prices per ton.

**Springfield Livestock Marketing Center
Special Dairy Heifer Sale Report for 03/28/2017**

Receipts: 950 Last Month Special: 694 Year Ago: 906
Springer Heifers bred seven to nine months: Supreme 1300.00-1425.00. Approved 1000.00-1275.00. Medium 900.00- 990.00. Heifers bred three to six months: Supreme 1300.00-1450.00. Approved 1000.00-1290.00. Medium 825.00- 975.00. Common 460.00- 550.00. Heifers bred one to three months: Supreme 1220.00-1250.00. Approved 920.00-1110.00. Medium 790.00- 850.00. Open Heifers: Approved: 200-300 lbs 330.00-450.00, 300-400 lbs 470.00-580.00, 400-500 lbs 510.00-690.00, 500-600 lbs 710.00-800.00, 600-700 lbs 810.00-920.00, 700-800 lbs 840.00-970.00. Medium: 200-300 lbs 190.00-240.00, 400-500 lbs few 400.00-450.00, 500-600 lbs 620.00-670.00, 600-700 lbs 660.00-790.00. Replacement Cows: Fresh Heifers and Cows: Supreme 1400.00-1575.00, top ind 1900.00. Approved 1250.00-1350.00. Medium 800.00-1150.00. Milking Cows: Supreme 1400.00-1675.00. Medium 875.00-1125.00. Common 500.00-725.00. Bred Cows: Supreme 1375.00-1725.00. Approved 1100.00-1225.00. Medium 1025.00-1150.00. Common 600.00-925.00. Baby Calves: Holstein heifers 175.00-230.00. Holstein bulls 85.00-135.00. Jersey bulls 35.00-55.00. Crossbred heifers 120.00-190.00. Beef cross heifers few 230.00-300.00. Beef cross bulls 125.00-260.00.

Diamond - TS Whites Sheep and Goat Auction for 04/06/2017

Receipts: 2012 Last Month: 1147 Last Year: 0
SHEEP: Feeder Lambs: Medium and Large 1 25-55 lbs 220.00-227.50. Medium and Large 1-2 27-38 lbs 200.00-217.50. Slaughter Wool Lambs: Choice and Prime 1-2 42-55 lbs 215.00-225.00; 73-77 lbs 210.00-217.50. Hair lambs: Prime 1-2 40-75 lbs 210.00-227.50; 83-90 lbs 195.00-200.00. Choice 2-3 60-64 lbs 205.00-207.50; 90-130 lbs 120.00-252.50. Replacement Hair Ewes: Medium and Large 2-3 86-138 lbs 150.00-175.00. Slaughter Wool Ewes: Utility and Good 2-3 105-207 lbs 70.00-85.00. Slaughter Hair Ewes: Good 2-3 73-152 lbs 65.00-85.00. Replacement Hair Rams: Medium and Large 1-2 Shooters 230.00-235.00 Per Head. Medium and Large 1-2 Dorper and Dorper cross 155.00-250.00 Per Head. Slaughter Rams: Utility and Good 2-3 130-220 lbs 70.00-90.00. GOATS: Feeder kids: Selection 1 28-36 lbs 250.00-270.00. Selection 2 25-38 lbs 225.00-245.00; 25-35 lbs 200.00-210.00. Selection 3 29-38 lbs 150.00-175.00. Slaughter Kids: Selection 1 45-68 lbs 280.00-300.00; 75-105 lbs 200.00-230.00. Selection 2 43-73 lbs 250.00-277.50; 68-90 lbs 130.00-175.00. Replacement Does: Selection 1-2 95-175 lbs 160.00-185.00. Slaughter Does: Selection 1 87-200 lbs 130.00-157.50. Selection 2 75-110 lbs 117.50-125.00. Selection 3 65-95 lbs 110.00-122.50. Slaughter Bucks: Selection 1-2 95-175 lbs 130.00-157.50.

WEEKLY COMMODITY GRAIN FUTURES TRENDS

Compared to last Friday: Soybeans .04 to .05 lower, Wheat .02 to .04 lower, Corn .04 to .05 lower, Kansas City Wheat unchanged to .02 higher, Soybean Meal .20 to 1.10 lower.

Daily Grain Futures Closes

	Mon.	Tues.	Wed.	Thu.	Fri.
Soybeans					
May	938 1/4	937 3/4	944 1/4	941 1/2	942
Jul	949 1/4	948 1/4	955 1/4	952 3/4	953 1/4
Aug	952	951 1/4	957 3/4	954 3/4	954 3/4
Sep	950 1/2	950	955 3/4	952 1/4	951 3/4
Nov	950 1/4	949	954	950 3/4	949 1/2
Wheat					
May	427 3/4	427	429 3/4	423 1/4	424
Jul	440 1/4	440	442 1/2	436	436 1/4
Sep	454 1/2	454 1/2	456 3/4	450 1/4	449 3/4
Dec	474 1/2	475	477	470 3/4	470
Mar	489 1/4	491	493 3/4	487 3/4	486 1/2
Corn					
May	367 3/4	363	364 3/4	360 3/4	359 1/2
Jul	375 1/4	370 3/4	372 1/2	368 1/2	367 1/4
Sep	382 3/4	378 1/4	380	376 1/4	374 3/4
Dec	392	387 3/4	389 1/4	386	384 1/2
Mar	401 1/4	397	398 1/2	395	393 1/2
KC Wheat					
May	419	421 3/4	425	420	421 3/4
Jul	432 1/4	434 1/2	438	433	434 1/4
Sep	448 1/4	450 1/4	454	448 3/4	449 3/4
Dec	471 3/4	474	477 1/2	473	474 1/4
Mar	488 1/4	491 1/2	494 1/2	490	491 1/2
SB Meal					
May	307.60	308.10	309.80	308.70	307.40
Jul	311.00	311.50	312.90	312.40	311.40
Aug	311.60	312.20	313.40	313.10	312.10
Sep	312.20	312.70	313.60	313.20	312.10
Oct	311.50	311.60	312.00	311.50	310.30

WEEKLY COMMODITY FUTURES TRENDS

Compared to last week: Live Cattle .10 to 1.22 higher, Lean Hogs .48 to 2.35 lower, Feeder Cattle 1.17 to 2.85 higher, except Mar .20 lower.

Daily Futures Closes

	Mon.	Tues.	Wed.	Thu.	Fri.
Cattle					
Apr	119.42	118.22	118.27	118.80	120.05
Jun	110.70	109.30	109.42	110.12	111.80
Aug	106.80	105.52	105.60	106.37	107.97
Oct	106.62	105.50	105.57	106.20	107.65
Dec	107.47	106.45	106.45	107.07	108.47
Lean Hogs					
Apr	64.80	63.67	63.62	63.92	63.32
May	69.40	68.17	68.35	69.55	69.00
Jun	72.65	71.97	72.02	73.70	72.77
Jul	72.72	72.42	72.27	73.75	73.25
Aug	72.75	72.55	72.35	73.62	73.27
Fdr Cat					
Apr	133.07	131.02	130.52	131.95	133.75
May	131.80	130.30	130.42	132.17	133.87
Aug	133.35	132.12	132.15	133.70	135.65
Sep	133.00	131.97	131.92	133.47	135.60
Oct	132.10	131.42	131.17	132.62	134.65
Milk					
Apr	15.52	15.36	15.32	15.13	15.08
May	15.83	15.53	15.36	15.13	15.10
Jun	16.12	15.86	15.67	15.39	15.35

INTERIOR MISSOURI DIRECT HOGS

Weekly Receipts: 2788 Week ago: 2351 Year ago: 2455
Compared to last week, barrows and gilts 3.00 lower. Sows 2.00 lower to 3.00 higher.

BARROWS AND GILTS: Base carcass meat price 51.00-55.00. weekly top Fri 55.00
SOWS: 300-500 lbs. 32.00-36.00
Over 500 lbs. 36.00-40.00

WEEKLY MARKET SUMMARY
 (USPS 597250)
 To be published weekly by the
 Missouri Department of Agriculture
 1616 Missouri Blvd.
 Jefferson City, MO 65109

Postmaster: Send address changes to:
 Missouri Department of Agriculture
 P.O. Box 630
 Jefferson City, MO 65102

Periodicals postage paid at
 Jefferson City, Missouri

Market News Hotline
1-573-522-9244

April 07, 2017

MISSOURI GRAIN WEEKLY TRENDS

Weekly Trends: Soybeans .08 lower to .06 higher, Soft Wheat .02 lower, Corn .04 to .08 lower, Sorghum .09 lower.

Area	#1 Soybeans	#2 Soft Wheat	#2 Corn	#2 Grain Sorghum
Kansas City				
Friday**	8.96-9.06	3.66-3.81	3.29-3.49	5.60
Monday	8.88-8.98	3.68-3.83	3.32-3.53	5.67
Tuesday	8.88-9.03	3.67-3.82	3.28-3.48	5.58
Wednesday	8.94-9.09	3.69-3.85	3.29-3.50	5.62
Thursday	8.91-9.06	3.63-3.80	3.25-3.46	5.55
Friday	8.92-9.07	3.64-3.79	3.24-3.44	5.51
St. Louis				
Friday**	9.44	4.06-4.30	3.74	5.42
Monday	9.34	4.07-4.31	3.78-3.79	5.50
Tuesday	9.31	4.07-4.30	3.68-3.71	5.41
Wednesday	9.37-9.38	4.09-4.33	3.69-3.73	5.42
Thursday	9.35-9.37	4.03-4.27	3.65-3.67	5.35
Friday	9.36-9.37	4.04-4.28	3.66-3.67	5.33
Central				
Friday**	8.81-8.86	3.36-3.37	3.29-3.34	—
Monday	8.78-8.83	3.37-3.38	3.33-3.38	—
Tuesday	8.78-8.83	3.37	3.28-3.33	—
Wednesday	8.84-8.89	3.39-3.55	3.30-3.35	—
Thursday	8.81-8.87	3.33-3.48	3.26-3.32	—
Friday	8.82-8.87	3.34-3.49	3.25-3.32	—
S.E. MO				
Friday**	9.31-9.41	4.36	3.64-3.68	6.14
Monday	9.23-9.29	4.37-4.49	3.67-3.71	—
Tuesday	9.21-9.29	4.36-4.48	3.60-3.65	—
Wednesday	9.33-9.34	4.40	3.61-3.66	—
Thursday	9.30-9.33	4.33	3.61-3.65	—
Friday	9.31-9.35	4.34	3.60-3.64	—

Missouri Crop Progress and Condition Report

Rain throughout the region delayed planting of corn. There were 1.1 days suitable for fieldwork for the week ending April 2. Temperatures averaged 52.7 degrees, 2.7 degrees above normal. Precipitation averaged 1.43 inches statewide, 0.39 inches above normal. Topsoil moisture supply was rated 4 percent very short, 17 percent short, 55 percent adequate, and 24 percent surplus. Subsoil moisture supply was rated 7 percent very short, 26 percent short, 60 percent adequate, and 7 percent surplus. Corn planting was 1 percent complete, 2 percentage points behind the previous year and the 5-year average. Winter wheat condition was rated 2 percent poor, 35 percent fair, 56 percent good, and 7 percent excellent. Pasture and range condition was rated 2 percent poor, 34 percent fair, 62 percent good, and 2 percent excellent.

(PRICES PER BU. EXCEPT GR. SORG. PER CWT)
 *NEW CROP **PREVIOUS WEEK'S PRICES