

# Weekly Market Summary

Published by:  
**Missouri Department of Agriculture**  
**Ag Business Development Division**  
**Market News Program**



Chris Chinn, Director  
 Ken Struempf, Division Director  
 Tony Hancock, Editor  
 agmarketnews.mo.gov  
 http://www.ams.usda.gov/

Eric R. Greitens, Governor

Volume XXXVII, Number 15 ♦ P.O. Box 630, Jefferson City, MO 65102 ♦ (573) 751-4211 ♦ Friday April 14, 2017

## MISSOURI WEEKLY FEEDER CATTLE WEIGHTED AVERAGE REPORT

Receipts: 36,839 Week ago: 24,911 Year ago: 32,483  
 Steers and Heifers Medium and Large 1 Hols. Large 3

Fdr. STEERS:		Fdr. HEIFERS:		Hols. STEERS	
359 lbs.	183.09	364 lbs.	160.91	466 lbs.	82.12
457 lbs.	178.32	450 lbs.	151.89	543 lbs.	83.56
545 lbs.	167.25	544 lbs.	141.73	645 lbs.	81.16
644 lbs.	152.16	647 lbs.	137.20	750 lbs.	79.70
743 lbs.	141.48	739 lbs.	128.24	829 lbs.	76.35
852 lbs.	132.28	863 lbs.	119.13	942 lbs.	79.89
931 lbs.	125.32	967 lbs.	109.78		

## SOUTHERN MISSOURI WEEKLY SUMMARY (West Plains, Ava)

Receipts: 6027 Weeks ago: 5098 Year ago: 4590  
 Compared to last week, feeders steady to 5.00 higher, spots 10.00 higher early week on steers over 600 lbs. Slaughter cows and bulls 1.00 to 4.00 lower.

STEERS:		HEIFERS:	
Medium and Large 1		Medium and Large 1	
300-400 lbs.	175.00-200.00	300-400 lbs.	153.00-173.00
400-500 lbs.	168.00-189.00	400-500 lbs.	140.00-159.00
500-600 lbs.	148.00-176.00	500-600 lbs.	127.50-150.00
600-700 lbs.	141.00-160.00	600-700 lbs.	125.00-139.00
700-800 lbs.	135.00-144.50	700-800 lbs.	123.50-127.00
800-850 lbs.	126.00-130.50		

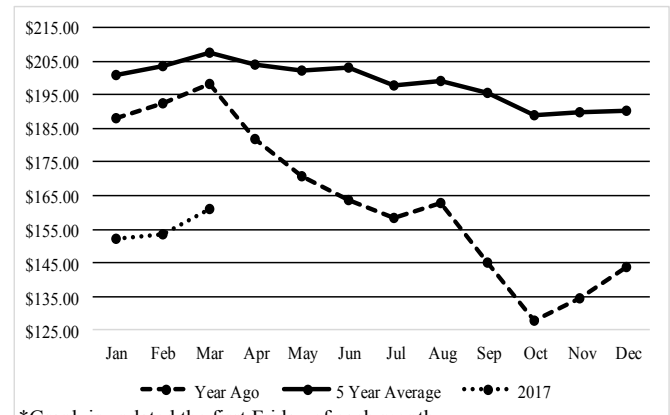
Holsteins:		SLAUGHTER COWS:	
Large 3		Breaking and Boning (70-85% lean) 63.50-72.00, high dressing 68.00-78.00. Lean (85-90%) 55.00-66.50	
450-500 lbs.	68.00-85.00		
Pkg 972 lbs.	68.00		

SLAUGHTER BULLS:		REPLACEMENT COWS:	
Yield Grade 1-2 1205-1980 lbs. 85.00-94.00, high dressing 95.00-106.00, low dressing 70.00-85.00		Medium and Large 1-2 2-7 yrs 870-1315 lbs 2nd to 3rd stage 900.00-1325.00; 6 yrs to broken mouth 1070-1425 lbs 2nd to 3rd stage 875.00-1300.00 per head	

**COW & CALF PAIRS:**  
 Medium and Large 1-2 2-6 yrs 780-1160 lbs few rebred with 75-365 lb calves 1425.00-1750.00; short solid to broken mouth 888-1150 lbs with 100-200 lb calves 1100.00-1250.00 per pair

The Weekly Market Summary is available to anyone for a \$25.00 annual subscription fee. To subscribe, send your check or money order to: Weekly Market Summary, Missouri Department of Agriculture, P.O. Box 630, Jefferson City, MO 65102.

## Historical Feeder Steers Medium and Large 1 500-600 lbs. Weighted Average



\*Graph is updated the first Friday of each month.

## Year Ago Slaughter Steers and Heifers:

Northeast Missouri: Steers: No sales reported

East Central Missouri: few Select and Choice 2-3 128.00-132.50

## SOUTHWEST MISSOURI WEEKLY SUMMARY

(Joplin and Springfield)

Feeder Cattle Receipts: 8539 Week ago: 5853 Year ago: 10,242  
 Cow and Bull Receipts: 1363 Week ago: 1122 Year ago: 1460  
 Compared to last week, feeder steers and heifers steady to 5.00 higher, spots 10.00 higher on calves late week. Slaughter cows and slaughter bulls weak to 4.00 lower.

STEERS:		HEIFERS:	
Medium and Large 1		Medium and Large 1	
350-400 lbs.	171.00-187.00	300-400 lbs.	152.00-171.00
400-500 lbs.	163.50-190.00	400-500 lbs.	141.00-160.00
500-600 lbs.	152.00-177.00	500-600 lbs.	131.00-147.50
600-700 lbs.	144.75-159.00	600-700 lbs.	127.00-138.00
700-800 lbs.	139.00-146.50	700-800 lbs.	122.00-128.00
800-900 lbs.	129.00-133.50		

HOLSTEINS:		SLAUGHTER COWS:	
Large 3		Breaking and Boning (70-85% lean) 62.50-72.00, high dressing 67.00-79.00. Lean (85-90%) 53.00-64.00	
400-500 lbs.	74.00-91.00		
500-600 lbs.	75.00-93.50		
600-700 lbs.	75.00-85.50		
700-800 lbs.	72.50-87.00		
800-900 lbs.	70.00-85.00		
900-1000 lbs.	70.00-83.75		

**REPLACEMENT COWS:** Medium and Large 1 3 yrs 2nd to 3rd stage 1100-1295 lbs 1400.00-1575.00. Medium and Large 1-2 2-7 yrs 2nd to 3rd stage 1010-1370 lbs 1100.00-1460.00 per head.

**COW & CALF PAIRS:** Medium and Large 1-2 4-7 yrs 1085-1255 lbs with 100-285 lb calves some rebred 1300.00-1475.00; short solid to aged 1140-1325 lbs with newborn to 160 lb calves few rebred 1050.00-1200.00 per pair

**WEST CENTRAL MISSOURI WEEKLY SUMMARY**

(Sedalia, Kingsville, Butler)

Receipts: 4577 Week Ago: 2180 Year ago: 2710

Compared to last week, feeders steady to 5.00 higher. Slaughter cows 2.00 to 4.00 lower.

FEEDER STEERS:  
Medium and Large 1400-500 lbs. 164.00-190.50  
500-600 lbs. 152.00-183.00  
600-700 lbs. 139.00-165.00  
700-800 lbs. 128.75-145.00  
800-900 lbs. 128.50-135.75FEEDER HEIFERS:  
Medium and Large 1300-400 lbs. 150.00-169.50  
400-500 lbs. 139.75-160.00  
500-600 lbs. 130.00-151.00  
600-700 lbs. 122.00-135.00  
800-900 lbs. 118.00-133.75SLAUGHTER BULLS: Yield  
Grade 1-2 1140-2235 lbs 85.00-  
95.00, high dressing 94.75-101.50  
low dressing 72.00-84.50SLAUGHTER COWS: Breaking  
and Boning (70-85% lean)  
57.00-70.00. Lean (85-90%)  
51.50-63.00COW & CALF PAIRS: Medium  
and Large 1-2 2 yrs to short solid  
950-1250 lbs with newborn to 225  
lb calves 1400.00-1650.00 per pairREPLACEMENT COWS:  
Medium and Large 1-2 2 yrs to  
short solid 950-1285 lbs 2nd to  
3rd stage 925.00-1400.00 per  
head**EAST CENTRAL MISSOURI WEEKLY SUMMARY**

(Bowling Green, Kingdom City, Macon, Boonville)

Receipts: 6099 Week ago: 2538 Year ago: 6544

Compared to last week, feeder calves 5.00 to 10.00 higher. Yearlings over 650 lbs steady to 5.00 higher. Slaughter cows steady to 2.00 lower.

FEEDER STEERS:  
Medium and Large 1400-500 lbs. 177.00-185.00  
500-600 lbs. 160.00-181.00  
600-700 lbs. 148.00-165.00  
700-800 lbs. 129.75-156.50  
800-900 lbs. 129.00-139.00FEEDER HEIFERS:  
Medium and Large 1300-400 lbs. 147.00-164.00  
400-500 lbs. 144.00-168.00  
500-600 lbs. 138.00-152.00  
600-700 lbs. 130.00-148.00  
700-800 lbs. 122.00-133.25SLAUGHTER STEERS and HEIFERS: Choice 3-4 1050-  
1370 lbs 125.00-128.00. Select  
and Chocie 1-2 1050-1400 lbs  
114.00-121.50SLAUGHTER COWS: Breaking  
and Boning, (70-85% lean) Aver-  
age dressing 63.00-72.50, high  
dressing 72.50-78.00, Lean (85-  
90%) 60.00-68.00REPLACEMENT COWS: ScarceSLAUGHTER BULLS: Yield  
Grade 1-2 1200-2550 lbs 88.50-  
99.00, high dressing 100.00-  
109.00**NORTHEAST MISSOURI WEEKLY SUMMARY**

(Palmyra, Unionville, Green City, New Cambria)

Feeder Cattle Receipts: 4010 Week ago: 5390 Year ago: 3111

Slaughter Cattle Receipts: 25 Week ago: 44 Year ago: 0

Compared to last week, feeders steady. Slaughter cows steady to 2.00 lower. Slaughter steers and heifers 3.00 to 4.00 lower.

FEEDER STEERS:  
Medium and Large 1400-500 lbs. 173.00-196.00  
500-600 lbs. 161.50-185.00  
600-700 lbs. 144.75-167.50  
700-800 lbs. 132.25-151.50  
800-900 lbs. 128.25-135.25FEEDER HEIFERS:  
Medium and Large 1400-500 lbs. 149.25-168.00  
500-600 lbs. 142.50-157.00  
600-700 lbs. 133.00-145.50  
700-800 lbs. 124.25-140.85SLAUGHTER STEERS:  
Choice 2-3 1150-1400 lbs 125.75  
-126.75SLAUGHTER COWS: Breaking  
and Boning (75-85% lean) 66.00-  
72.50, high dressing 75.75-78.75.  
Lean (85-90%) 62.00-70.00SLAUGHTER HEIFERS:  
Choice 2-3 pkg 1260 lbs 125.75SLAUGHTER BULLS: Yield  
Grade 1-2 1300-2400 lbs 89.00-  
98.50COW & CALF PAIRS: Medium  
and Large 1 2-4 yrs 1175-1415  
lbs some rebred 125-375 lb calves  
2275.00-2500.00 per pairREPLACEMENT COWS: Me-  
dium and Large 1-2 3-5 yrs 1000  
-1150 lbs 1st to 2nd stage  
1210.00-1450.00 per head**SOUTHEAST MISSOURI WEEKLY SUMMARY**

(Farmington, Patton)

Receipts: 2733 Week ago: 3078 Year ago: 1818

Compared to a week ago, feeder steers and heifers 1.00 to 11.00 higher. Slaughter cows 1.00 lower. Slaughter bulls 1.00 higher.

FEEDER STEERS:  
Medium and Large 1300-400 lbs. 161.00-202.00  
400-500 lbs. 158.00-188.50  
500-600 lbs. 145.00-173.00  
600-700 lbs. 127.00-149.50  
700-800 lbs. 127.50-139.00FEEDER HEIFERS:  
Medium and Large 1300-400 lbs. 147.00-169.00  
400-500 lbs. 136.00-160.50  
500-600 lbs. 124.00-150.00  
600-700 lbs. 116.00-135.00  
700-800 lbs. 115.00-120.00REPLACEMENT COWS: Medium  
and Large 1-2 3-7 yrs 930-1350 lbs  
2nd to 3rd stage 875.00-1375.00 per  
headSLAUGHTER COWS: Breaking  
and Boning (75-85% lean) 55.00  
-66.00. Lean (85-90% lean)  
47.50-56.50COW & CALF PAIRS: Medium  
and Large 1-2 4-7 yrs 870-1320 lbs  
wih 140-310 lb calves 1185.00-  
1350.00 per pairSLAUGHTER BULLS: Yield  
Grade 1-2 few 1495-2490 lbs  
79.50-87.50, high dressing 90.50  
-99.50**SOUTH CENTRAL MISSOURI WEEKLY SUMMARY**

(Cuba, Vienna)

Receipts: 2540 Week ago: 1546 Year ago: 1854

Compared to last week, feeders 2.00 to 10.00 higher. Slaughter cows steady to 5.00 lower.

FEEDER STEERS:  
Medium and Large 1300-400 lbs. 177.00-197.00  
400-500 lbs. 166.50-190.00  
500-600 lbs. 155.00-176.00  
600-700 lbs. 140.00-152.50  
Part load 770 lbs. 134.50FEEDER HEIFERS:  
Medium and Large 1300-400 lbs. 158.00-173.00  
400-500 lbs. 140.00-166.00  
500-600 lbs. 135.00-148.00  
600-700 lbs. 135.00-141.00  
700-800 lbs. 126.75-133.00REPLACEMENT COWS: Medium  
and Large 1-2 few 2-7 yrs 875-1450  
lbs 1st to 3rd stage 985.00-1385.00  
per headSLAUGHTER COWS: Break-  
ing and Boning (70-85% lean)  
60.00-68.00, high dressing 67.25  
-71.00. Lean (85-90%) 57.00-  
66.50COW & CALF PAIRS: ScarceSLAUGHTER BULLS: Yield  
Grade 1-2 1400-2100 lbs 86.00-  
97.50, low dressing 80.00-85.00**NORTHWEST MISSOURI WEEKLY SUMMARY**

(St Joseph)

Receipts: 3474 Weeks ago: 1287 Year ago: 2338

Compared to last week, feeders steady to 3.00 lower. Slaughter cows steady to 2.00 lower. Slaughter bulls mostly steady.

FEEDER STEERS:  
Medium and Large 1400-500 lbs. 171.00-193.00  
500-600 lbs. 164.00-183.50  
600-700 lbs. 149.00-168.00  
700-800 lbs. 134.50-152.25  
800-850 lbs. 129.00-141.75FEEDER HEIFERS:  
Medium and Large 1350-400 lbs. 151.00-167.50  
400-500 lbs. 145.50-164.00  
500-550 lbs. 135.50-155.00  
600-700 lbs. 129.50-154.75  
700-750 lbs. 125.00-136.00SLAUGHTER BULLS:  
Yield grade 1-2 1225-2325 lbs  
83.00-90.00, high dressing 87.00  
-93.00, low dressing 61.00-78.50SLAUGHTER COWS:  
Breaking and Boning (70-85% lean)  
58.00-71.00, high dressing 69.00-  
74.00. Lean (85-90%) 50.00-61.00BRED COWS: Medium and  
Large 1-2 ind 5 yrs 1375 lbs 2nd  
stage 1175.00; short solid to  
aged 1230-1375 lbs 2nd to 3rd  
stage 1010.00-1300.00 per headCOW-CALF PAIRS: Medium and  
Large 1-2 aged 1000-1200 lbs with  
100-150 lb calves 850.00-1150.00  
per pair

**MISSOURI WEEKLY DIRECT WEANER AND FEEDER PIG REPORT**

Receipts: 5197 Weaner pigs steady to 2.00 lower. Feeder pigs no sales reported. Prices per head. Early weaned pigs 10 lb. base weights FOB the farm 0% negotiated, 4310 head, 10 lbs, 35.84-36.00, weighted average 35.92. Early weaned pigs 10 lbs base weights delivered 0% negotiated, 887 head, 10 lbs 34.79

**WHOLESALE FEEDSTUFFS PRICES  
(DOLLARS PER TON-BULK BASIS)**

Area	Soybean Meal 48% Solvent	Cottonseed Meal 41% Solvent	Meat Meal	Wheat Middlings
Kansas City	290.80	240.00	245.00	93.00
St. Louis	321.50	N/A	272.50	85.00

**MISSOURI WEEKLY DIRECT  
SLAUGHTER CATTLE REPORT**

Weekly Receipts: 160 Week ago: 160 Year ago: 160  
Trading from last Friday through Friday morning remains light as bids and asking prices are higher but many producers are passing bids.

LIVE STEERS & HEIFERS:                      DRESSED STEERS & HEIFERS:  
1 Load 128.50 FOB                              No sales reported

GRADE AND WEIGHT (Grid):  
2 Load 210.00

**By-Product Feed Prices**

Alfalfa Pellets, St. Louis MO 235.00; Corn Gluten Feed pelleted, Butler, MO FOB out; Distillers Grain Dried, FOB Carrollton, MO 105.00; Soy Hulls Kansas City, MO 105.00. Prices per ton.

**Norwood-Producer's Auction Yard**

**Special Dairy Heifer Sale Report for 04/13/2017**

Receipts: 382 Last Month Special: 401 Year Ago: 423

Springer Heifers Bred Seven to Nine Months: Supreme 1200.00-1310.00. Approved 980.00-1050.00. Medium 775.00-925.00, Individual Crossbred 925.00. Common 685.00-700.00, Jerseys 600.00-675.00. Heifers Bred Four to Six Months: Supreme Individual 1290.00. Approved 940.00-1050.00, Crossbreds 1025.00. Medium 775.00-875.00. Common 670.00-710.00, Crossbreds 520.00-710.00. Heifers Bred One to Three Months: Approved 870.00-1025.00. Medium 810.00-850.00. Open heifers: Approved 200-300 lbs 400.00-460.00, Crossbreds 380.00, 400-500 lbs 510.00-550.00. Medium 200-300 lbs 270.00-325.00, 400-500 lbs 400.00-435.00, Crossbreds 360.00, 500-600 lbs 500.00-550.00, Crossbreds 430.00-500.00, 600-700 lbs 450.00-470.00. Fresh Milking Heifers and Cows: Approved 1150.00-1175.00, Medium 875.00-1085.00. Common 560.00-750.00. Bred and Springer Cows: Medium 770.00-900.00. Baby Calves: Holstein Heifers Individual 280.00. Holstein Bulls 70.00-120.00. Jersey Heifers 185.00-225.00. Jersey Bulls 50.00-90.00. Crossbred Heifers Individual 160.00. Crossbred Bulls 60.00-140.00. Beef Cross Heifers Individual 160.00. Beef Cross Bulls 130.00-250.00.

**Diamond - TS Whites Sheep and Goat Auction for 04/06/2017**

Receipts: 2012 Last Month: 1147 Last Year: 0

SHEEP: Feeder Lambs: Medium and Large 1 25-55 lbs 220.00-227.50. Medium and Large 1-2 27-38 lbs 200.00-217.50. Slaughter Wool Lambs: Choice and Prime 1-2 42-55 lbs 215.00-225.00; 73-77 lbs 210.00-217.50. Hair lambs: Prime 1-2 40-75 lbs 210.00-227.50; 83-90 lbs 195.00-200.00. Choice 2-3 60-64 lbs 205.00-207.50; 90-130 lbs 120.00-252.50. Replacement Hair Ewes: Medium and Large 2-3 86-138 lbs 150.00-175.00. Slaughter Wool Ewes: Utility and Good 2-3 105-207 lbs 70.00-85.00. Slaughter Hair Ewes: Good 2-3 73-152 lbs 65.00-85.00. Replacement Hair Rams: Medium and Large 1-2 Shooters 230.00-235.00 Per Head. Medium and Large 1-2 Dorper and Dorper cross 155.00-250.00 Per Head. Slaughter Rams: Utility and Good 2-3 130-220 lbs 70.00-90.00. GOATS: Feeder kids: Selection 1 28-36 lbs 250.00-270.00. Selection 2 25-38 lbs 225.00-245.00; 25-35 lbs 200.00-210.00. Selection 3 29-38 lbs 150.00-175.00. Slaughter Kids: Selection 1 45-68 lbs 280.00-300.00; 75-105 lbs 200.00-230.00. Selection 2 43-73 lbs 250.00-277.50; 68-90 lbs 130.00-175.00. Replacement Does: Selection 1-2 95-175 lbs 160.00-185.00. Slaughter Does: Selection 1 87-200 lbs 130.00-157.50. Selection 2 75-110 lbs 117.50-125.00. Selection 3 65-95 lbs 110.00-122.50. Slaughter Bucks: Selection 1-2 95-175 lbs 130.00-157.50.

**WEEKLY COMMODITY GRAIN FUTURES TRENDS**

Compared to last Friday: Soybeans .12 to .14 higher, Wheat .05 to .07 higher, Corn .10 to .12 higher, Kansas City Wheat .05 to .06 higher, Soybean Meal 9.30 to 10.40 higher..

**Daily Grain Futures Closes**

	Mon.	Tues.	Wed.	Thu.	Fri.
Soybeans					
May	941 3/4	939 1/4	947 3/4	955 1/2	Holiday
Jul	953 1/4	950 3/4	958 3/4	966 1/4	
Aug	955	952 3/4	960 3/4	968	
Sep	952 1/4	950	957 1/2	964 1/2	
Nov	949 3/4	948 1/2	955 1/2	961 3/4	
Wheat					
May	428 3/4	433 1/4	433 1/4	429 3/4	Holiday
Jul	441 3/4	447 1/2	446 1/4	442 3/4	
Sep	455	461	459 3/4	455 3/4	
Dec	474 3/4	481	480 1/4	476 3/4	
Mar	491	497 1/4	496 1/2	493 3/4	
Corn					
May	367	366 1/2	369	371	Holiday
Jul	374 1/2	373 3/4	376	378	
Sep	381 3/4	380 3/4	382 3/4	384 1/2	
Dec	391	390 1/2	392 1/2	394 1/2	
Mar	399 1/2	399 1/4	401	403 1/2	
KC Wheat					
May	425 1/2	429 3/4	430	427 1/4	Holiday
Jul	438 1/4	442	442 1/2	439 1/4	
Sep	453 1/4	457 3/4	458 1/2	455 1/2	
Dec	477 3/4	482	482 1/2	480 1/2	
Mar	495	499	499 1/4	497 1/2	
SB Meal					
May	309.10	309.30	312.70	317.50	Holiday
Jul	313.20	313.50	317.00	321.80	
Aug	314.00	314.40	317.80	322.40	
Sep	313.70	314.20	317.70	321.80	
Oct	311.70	311.80	315.30	319.60	

**WEEKLY COMMODITY FUTURES TRENDS**

Compared to last week: Live Cattle .267 to 5.32 higher, Lean Hogs .27 to .87 lower, except Jul and Aug .37 to .90 higher, Feeder Cattle 4.05 to 4.97 higher.

**Daily Futures Closes**

	Mon.	Tues.	Wed.	Thu.	Fri.
Cattle					
Apr	121.10	123.25	124.20	125.37	Holiday
Jun	112.30	113.70	114.35	114.70	
Aug	108.60	109.85	110.37	110.80	
Oct	108.17	109.32	109.85	110.32	
Dec	109.05	110.15	110.75	111.22	
Lean Hogs					
Apr	63.32	62.65	62.22	62.45	Holiday
May	69.35	69.57	68.02	68.30	
Jun	73.27	74.00	72.27	72.50	
Jul	73.97	74.82	73.55	73.62	
Aug	74.07	74.95	74.02	74.17	
Fdr Cat					
Apr	135.30	137.17	137.50	137.80	Holiday
May	135.37	137.32	137.82	138.40	
Aug	137.17	139.17	139.95	140.27	
Sep	137.40	139.72	140.35	140.55	
Oct	136.67	139.12	139.42	139.62	
Milk					
Apr	15.10	15.14	15.19	15.23	Holiday
May	15.02	15.23	15.49	15.20	
Jun	15.18	15.32	15.55	15.38	

**INTERIOR MISSOURI DIRECT HOGS**

Weekly Receipts: 2510 Week ago: 2788 Year ago: 2454  
Compared to last week, barrows and gilts 2.00 to 5.00 lower. Sows 1.00 lower.

BARROWS AND GILTS:                      SOWS:  
Base carcass meat price 49.00-              300-500 lbs. 31.00-36.00  
50.00. weekly top Mon 53.00                  Over 500 lbs. 35.00-39.00

WEEKLY MARKET SUMMARY  
 (USPS 597250)  
 To be published weekly by the  
 Missouri Department of Agriculture  
 1616 Missouri Blvd.  
 Jefferson City, MO 65109

Postmaster: Send address changes to:  
 Missouri Department of Agriculture  
 P.O. Box 630  
 Jefferson City, MO 65102

Periodicals postage paid at  
 Jefferson City, Missouri

**Market News Hotline**  
**1-573-522-9244**

**April 14, 2017**

**MISSOURI GRAIN WEEKLY TRENDS**

Weekly Trends: Soybeans .13 to .20 higher, Soft Wheat .05 to .08 higher, Corn .12 to .15 higher, Sorghum .22 higher.

Area	#1 Soy-beans	#2 Soft Wheat	#2 Corn	#2 Grain Sorghum
<b>Kansas City</b>				
Friday**	8.92-9.07	3.64-3.79	3.24-3.44	5.51
Monday	8.92-9.06	3.69-3.84	3.32-3.52	5.66
Tuesday	8.89-9.04	3.73-3.88	3.31-3.51	5.64
Wednesday	8.97-9.12	3.73-3.90	3.34-3.54	5.69
Thursday	9.07-9.25	3.69-3.87	3.36-3.56	5.55
Friday	Holiday			
<b>St. Louis</b>				
Friday**	9.36-9.37	4.04-4.28	3.66-3.67	5.33
Monday	9.35-9.39	4.08-4.33	3.76-3.77	5.48
Tuesday	9.33-9.36	4.13-4.37	3.75-3.76	5.46
Wednesday	9.46-9.50	4.13-4.37	3.78	5.51
Thursday	9.55-9.57	4.09-4.35	3.81-3.82	5.55
Friday	Holiday			
<b>Central</b>				
Friday**	8.82-8.87	3.34-3.49	3.25-3.32	—
Monday	8.82-8.87	3.38-3.54	3.34-3.39	—
Tuesday	8.79-8.84	3.43-3.58	3.33-3.39	—
Wednesday	8.88-8.93	3.43-3.58	3.36-3.41	—
Thursday	8.95-9.01	3.39-3.55	3.38-3.43	—
Friday	Holiday			—
<b>S.E. MO</b>				
Friday**	9.31-9.35	4.34	3.60-3.64	—
Monday	9.30-9.34	4.39	3.67-3.72	—
Tuesday	9.28-9.33	4.43	3.66-3.71	—
Wednesday	9.36-9.40	4.43	3.69-3.74	—
Thursday	9.44-9.50	4.39	3.71-3.76	—
Friday	Holiday			—

(PRICES PER BU. EXCEPT GR. SORG. PER CWT)  
 \*NEW CROP \*\*PREVIOUS WEEK'S PRICES

**Missouri Crop Progress and Condition Report**

Rain continues to delay planting of corn throughout the region. There were 1.4 days suitable for fieldwork for the week ending April 9. Temperatures averaged 54.2 degrees, 3.5 degrees above normal. Precipitation averaged 1.56 inches statewide, 0.89 inches above normal. Topsoil moisture supply was rated 4 percent very short, 11 percent short, 64 percent adequate, and 21 percent surplus. Subsoil moisture supply was rated 6 percent very short, 18 percent short, 65 percent adequate, and 11 percent surplus. Corn planting was 5 percent complete, 16 percentage points behind the previous year and 7 percentage points behind the 5-year average. Winter wheat condition was rated 2 percent poor, 36 percent fair, 55 percent good, and 7 percent excellent. Pasture and range condition was rated 2 percent poor, 31 percent fair, 65 percent good, and 2 percent excellent. Spring tillage is 25 percent complete compared to 17 percent for the 5-year average.