

Weekly Market Summary

Published by:
Missouri Department of Agriculture
Ag Business Development Division
Market News Program



Chris Chinn, Director
 Ken Struempfler, Division Director
 Tony Hancock, Editor
 agmarketnews.mo.gov
 http://www.ams.usda.gov/

Eric R. Greitens, Governor

Volume XXXVII, Number 16 ♦ P.O. Box 630, Jefferson City, MO 65102 ♦ (573) 751-4211 ♦ Friday April 21, 2017

MISSOURI WEEKLY FEEDER CATTLE WEIGHTED AVERAGE REPORT

Receipts: 28,903 Week ago: 36,839 Year ago: 30,922
 Steers and Heifers Medium and Large 1 Hols. Large 3

Fdr. STEERS:		Fdr. HEIFERS:		Hols. STEERS	
363 lbs.	189.72	361 lbs.	165.78	345 lbs.	109.00
453 lbs.	182.41	454 lbs.	154.94	434 lbs.	98.90
546 lbs.	172.32	540 lbs.	146.28	527 lbs.	86.58
643 lbs.	154.26	643 lbs.	137.59		
753 lbs.	143.45	743 lbs.	129.29		
853 lbs.	137.39	848 lbs.	122.07		
942 lbs.	132.93	973 lbs.	120.33		

SOUTHERN MISSOURI WEEKLY SUMMARY

(West Plains, Ava)

Receipts: 5084 Weeks ago: 6027 Year ago: 4723

Compared to last week, feeders steady to 5.00 higher, spots 5.00 to 10.00 higher on calves early week. Slaughter cows steady to 5.00 lower. Slaughter bulls steady to 2.00 lower.

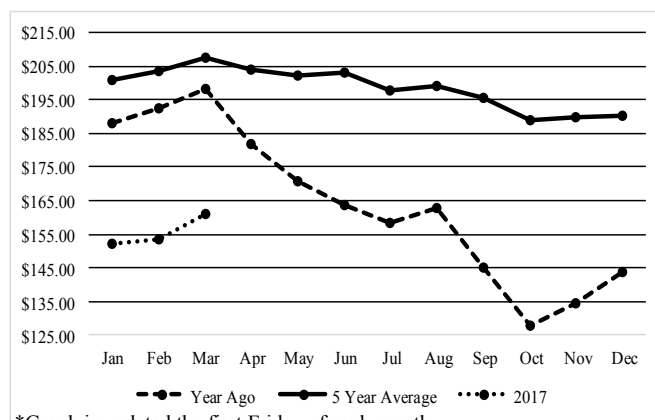
STEERS:		HEIFERS:	
Medium and Large 1		Medium and Large 1	
350-400 lbs.	185.00-197.00	300-400 lbs.	161.00-176.00
400-500 lbs.	175.50-192.00	400-500 lbs.	142.50-163.00
500-600 lbs.	154.50-185.00	500-600 lbs.	132.50-156.00
600-700 lbs.	139.00-160.00	600-700 lbs.	129.00-140.00
750-800 lbs.	132.50-142.00	700-800 lbs.	126.50-128.00
800-850 lbs.	131.50-138.75		

Holsteins:		SLAUGHTER COWS:	
Large 3		Breaking and Boning (70-85% lean) 60.00-67.00, high dressing 65.50-75.00. Lean (85-90%) 54.50-63.00	
Pkg 412 lbs.	102.50		
Pkg 511 lbs.	96.50		
Pkg 612 lbs.	86.00		

SLAUGHTER BULLS:		REPLACEMENT COWS:	
Yield Grade 1-2 1140-2240 lbs. 83.50-94.00, high dressing 93.00-108.00, low dressing 72.50-85.50		Medium and Large 1-2 2-7 yrs 950-1500 lbs 2nd to 3rd stage 1000.00-1450.00, 1st stage 950.00-1025.00; short solid to broken mouth 1140-1470 lbs 2nd to 3rd stage 875.00-1000.00 per head	

COW & CALF PAIRS:	
Medium and Large 1-2 3-5 yrs 878-950 lbs with 125-150 lb calves 1300.00-1550.00; pkg 3 pair broken mouth 1302 lbs with 350 lb calves 1200.00 per pair	

Historical Feeder Steers Medium and Large 1 500-600 lbs. Weighted Average



*Graph is updated the first Friday of each month.

Year Ago Slaughter Steers and Heifers:

Northeast Missouri: Steers: Choice 2-3 1250-1300 lbs 128.50-129.50
 Heifers: Choice 2-3 1250-1400 lbs 129.25-130.50

East Central Missouri: few Select and Choice 2-3 130.00-136.50

SOUTHWEST MISSOURI WEEKLY SUMMARY

(Joplin and Springfield)

Feeder Cattle Receipts: 5533 Week ago: 8539 Year ago: 7510

Cow and Bull Receipts: 4160 Week ago: 1363 Year ago: 1757

Compared to last week, feeder steers and heifers steady to 5.00 higher, spots 8.00 to 10.00 higher on calves. Slaughter cows steady to 3.00 lower. Slaughter bulls steady to 2.00 lower.

STEERS:		HEIFERS:	
Medium and Large 1		Medium and Large 1	
350-400 lbs.	177.00-196.50	300-400 lbs.	150.00-175.00
400-500 lbs.	170.00-191.00	400-500 lbs.	147.00-164.00
500-600 lbs.	159.00-184.00	500-600 lbs.	136.00-157.00
600-700 lbs.	143.50-163.00	600-700 lbs.	126.50-142.50
700-800 lbs.	136.50-147.00	700-750 lbs.	123.50-134.50
800-900 lbs.	133.50-138.75	800-900 lbs.	119.50-125.00

HOLSTEINS:		SLAUGHTER COWS:	
Large 3		Breaking and Boning (70-85% lean) 62.50-69.00, high dressing 67.00-79.00. Lean (85-90%) 53.00-64.00	
Pkg 345 lbs.	109.00		
Pkg 464 lbs.	94.50		
Pkg 572 lbs.	84.00		

REPLACEMENT COWS:		COW & CALF PAIRS:	
Medium and Large 1 3-6 yrs 1100-1300 lbs 2nd to 3rd stage 1550.00-1600.00 per head. Medium and Large 1-2 2 yrs to short solid 925-1375 lbs 2nd to 3rd stage 1050.00-1550.00 per head		Medium and Large 1-2 2-7 yrs 885-1345 lbs with newborn to 450 lb calves several rebred 1600.00-2100.00; 7 yrs to short solid 1060-1360 lbs with newborn to 400 lb calves few rebred 1150.00-1375.00 per pair	

The Weekly Market Summary is available to anyone for a \$25.00 annual subscription fee. To subscribe, send your check or money order to: Weekly Market Summary, Missouri Department of Agriculture, P.O. Box 630, Jefferson City, MO 65102.

WEST CENTRAL MISSOURI WEEKLY SUMMARY

(Sedalia, Kingsville, Butler)

Receipts: 3168 Week ago: 4577 Year ago: 3364

Compared to last week, feeders steady to 6.00 higher, spots 10.00 higher on calves. Slaughter cows steady to 3.00 lower.

FEEDER STEERS:
Medium and Large 1400-500 lbs. 170.00-188.00
500-600 lbs. 160.50-185.50
600-700 lbs. 152.25-163.00
700-800 lbs. 132.00-149.50
800-900 lbs. 135.60-142.00FEEDER HEIFERS:
Medium and Large 1300-400 lbs. 154.50-175.00
400-500 lbs. 143.50-167.50
500-600 lbs. 134.50-158.00
600-700 lbs. 129.25-144.00
700-800 lbs. 128.10-135.25SLAUGHTER BULLS: Yield
Grade 1-2 1160-2160 lbs 84.00-
94.00, high dressing 95.00-101.00
low dressing 75.00-83.50SLAUGHTER COWS: Breaking
and Boning (70-85% lean)
59.00-68.00. Lean (85-90%)
53.50-61.00COW & CALF PAIRS: Medium
and Large 1-2 5 yrs to short solid
1050-1250 lbs with newborn calves
1300.00-1510.00 per pairREPLACEMENT COWS:
Medium and Large 1-2 3 yrs to
short solid 995-1310 lbs 2nd to
3rd stage 875.00-1275.00 per
head**EAST CENTRAL MISSOURI WEEKLY SUMMARY**

(Bowling Green, Kingdom City, Macon, Boonville)

Receipts: 4876 Week ago: 6099 Year ago: 5711

Compared to last week, feeders steady to firm, spots 3.00 higher. Slaughter cows steady to 4.00 lower.

FEEDER STEERS:
Medium and Large 1400-500 lbs. 175.00-191.00
500-600 lbs. 164.00-180.00
600-700 lbs. 145.00-162.50
700-800 lbs. 136.00-149.50
800-900 lbs. 127.50-136.50FEEDER HEIFERS:
Medium and Large 1400-500 lbs. 147.00-167.00
500-600 lbs. 142.00-155.00
600-700 lbs. 128.00-142.50
700-800 lbs. 126.00-132.50
800-900 lbs. 123.50-126.50SLAUGHTER STEERS and HEIFERS: Choice 2-4 1050-
1370 lbs 124.50-127.00. Select
and Choice 1-2 1050-1400 lbs
114.50-120.50SLAUGHTER COWS: Breaking
and Boning, (70-85% lean) Aver-
age dressing 63.00-70.00, high
dressing 70.00-74.50, Lean (85-
90%) 60.00-68.00REPLACEMENT COWS: ScarceSLAUGHTER BULLS: Yield
Grade 1-2 1200-2550 lbs 88.50-
98.00, high dressing 99.50-105.00**NORTHEAST MISSOURI WEEKLY SUMMARY**

(Palmyra, Unionville, Green City, New Cambria)

Feeder Cattle Receipts: 4014 Week ago: 2474 Year ago: 4447

Slaughter Cattle Receipts: 40 Week ago: 25 Year ago: 23

Compared to last week, feeders mostly steady, spots 5.00 higher. Slaughter cows steady to 3.00 lower. Slaughter steers and heifers 1.00 to 3.00 higher.

FEEDER STEERS:
Medium and Large 1400-500 lbs. 176.50-202.00
500-600 lbs. 163.50-187.50
600-700 lbs. 149.00-171.75
700-800 lbs. 143.00-156.75
800-900 lbs. 134.50-143.25FEEDER HEIFERS:
Medium and Large 1350-400 lbs. 157.50-166.00
400-500 lbs. 153.25-168.00
500-600 lbs. 135.50-156.00
600-700 lbs. 135.00-150.75SLAUGHTER STEERS:
Choice 2-3 1100-1350 lbs 126.75
-129.50SLAUGHTER COWS: Breaking
and Boning (75-85% lean) 59.50-
69.50, high dressing 68.00-73.50.
Lean (85-90%) 58.00-65.00SLAUGHTER HEIFERS:
Choice 2-3 975-1250 lbs 126.25-
128.75SLAUGHTER BULLS: Yield
Grade 1-2 1070-2100 lbs 84.50-
95.00COW & CALF PAIRS: ScarceREPLACEMENT COWS:
Scarce**SOUTHEAST MISSOURI WEEKLY SUMMARY**

(Farmington, Patton)

Receipts: 2551 Week ago: 2733 Year ago: 1771

Compared to a week ago, feeders uneven from 2.00 lower to 5.00 higher. Slaughter cows and bulls steady.

FEEDER STEERS:
Medium and Large 1300-400 lbs. 164.00-196.00
400-500 lbs. 160.00-192.00
500-600 lbs. 150.00-175.50
600-700 lbs. 130.00-154.75
700-800 lbs. 125.00-141.00FEEDER HEIFERS:
Medium and Large 1300-400 lbs. 145.00-178.00
400-500 lbs. 132.50-164.50
500-600 lbs. 128.00-148.00
600-700 lbs. 120.00-135.00
Pkg 739 lbs. 128.00REPLACEMENT COWS: Medium
and Large 1-2 3-7 yrs 835-1490 lbs
2nd to 3rd stage 930.00-1775.00 per
headSLAUGHTER COWS: Breaking
and Boning (75-85% lean) 53.00
-64.00. Lean (85-90% lean)
45.00-47.50COW & CALF PAIRS: Medium
and Large 1-2 3-7 yrs 920-1260 lbs
wih 160-260 lb calves 1025.00-
1775.00 per pairSLAUGHTER BULLS: Yield
Grade 1-2 1330-2260 lbs 75.50-
85.50, high dressing 92.50-
100.50**SOUTH CENTRAL MISSOURI WEEKLY SUMMARY**

(Cuba, Vienna)

Receipts: 2780 Week ago: 2540 Year ago: 2819

Compared to last week, feeders steady to 6.00 higher. Slaughter cows steady to 3.00 lower.

FEEDER STEERS:
Medium and Large 1300-400 lbs. 186.00-201.00
400-500 lbs. 169.00-196.00
500-600 lbs. 153.00-178.00
600-700 lbs. 145.00-155.75
700-800 lbs. 130.00-139.75FEEDER HEIFERS:
Medium and Large 1300-400 lbs. 160.00-185.00
400-500 lbs. 141.00-165.00
500-600 lbs. 139.50-154.40
600-700 lbs. 133.50-141.00
Pkg 772 lbs. 118.75REPLACEMENT COWS: Medium
and Large 1-2 few 1 1/2 to 7 yrs 850
-1350 lbs 1st to 3rd stage 910.00-
1300.00 per headSLAUGHTER COWS: Break-
ing and Boning (70-85% lean)
60.00-68.00. Lean (85-90%)
57.00-66.50COW & CALF PAIRS: Medium and
Large 1-2 5 yrs to short solid 975-
1175 lbs some rebred 1st stage with
125-400 lb calves 1300.00-1850.00
per pairSLAUGHTER BULLS: Yield
Grade 1-2 1350-2300 lbs 84.00-
97.00, low dressing 74.00-87.00**NORTHWEST MISSOURI WEEKLY SUMMARY**

(St Joseph)

Receipts: 3474 Weeks ago: 3474 Year ago: 2338

Compared to last week, feeder calves 3.00 to 8.00 higher, spots 11.00 higher. Yearlings steady to 3.00 higher. Slaughter cows mostly steady, spots 2.00 higher. Slaughter bulls mostly steady.

FEEDER STEERS:
Medium and Large 1400-500 lbs. 172.50-191.50
500-600 lbs. 164.00-183.50
600-700 lbs. 158.25-170.00
700-750 lbs. 144.00-155.00
800-850 lbs. 132.00-137.00FEEDER HEIFERS:
Medium and Large 1300-400 lbs. 157.00-186.00
400-500 lbs. 146.00-167.50
500-600 lbs. 143.50-158.50
600-700 lbs. 135.50-149.50
700-800 lbs. 124.00-139.50SLAUGHTER BULLS:
Yield grade 1-2 1220-2205 lbs
83.50-88.00, high dressing 87.00
-90.00, low dressing 70.00-77.00SLAUGHTER COWS:
Breaking and Boning (70-85% lean)
62.00-72.00, high dressing 68.50-
74.00. Lean (85-90%) 55.00-63.00BRED COWS: ScarceCOW-CALF PAIRS: Scarce

MISSOURI WEEKLY DIRECT WEANER AND FEEDER PIG REPORT

Receipts: 7502 Weaner pigs steady to 2.00 lower. Feeder pigs no sales reported. Prices per head. Early weaned pigs 10 lb. base weights FOB the farm 0% negotiated, 4050 head, 10 lbs, 35.00-36.00, weighted average 35.70. Early weaned pigs 10 lbs base weights delivered 36% negotiated, 3452 head, 10 lbs 32.00-33.93, weighted average 32.67

**WHOLESALE FEEDSTUFFS PRICES
(DOLLARS PER TON-BULK BASIS)**

Area	Soybean Meal 48% Solvent	Cottonseed Meal 41% Solvent	Meat Meal	Wheat Middlings
Kansas City	295.70	237.50	265.00	90.00
St. Louis	327.50	N/A	272.50	90.00

**MISSOURI WEEKLY DIRECT
SLAUGHTER CATTLE REPORT**

Weekly Receipts: 600 Week ago: 120 Year ago: 160
Trading from last Friday through Friday morning remains light to moderate as bids and asking prices are higher.

LIVE STEERS & HEIFERS: DRESSED STEERS & HEIFERS:
1 load 133.00 FOB 7 loads 212.00

GRADE AND WEIGHT (Grid):
7 loads 214.00-216.00

By-Product Feed Prices

Alfalfa Pellets, St. Louis MO 235.00; Corn Gluten Feed pelleted, Butler, MO FOB out; Distillers Grain Dried, FOB Carrollton, MO 105.00; Soy Hulls Kansas City, MO 110.00. Prices per ton.

Norwood-Producer's Auction Yard

Special Dairy Heifer Sale Report for 04/13/2017

Receipts: 382 Last Month Special: 401 Year Ago: 423

Springer Heifers Bred Seven to Nine Months: Supreme 1200.00-1310.00. Approved 980.00-1050.00. Medium 775.00-925.00, Individual Crossbred 925.00. Common 685.00-700.00, Jerseys 600.00-675.00. Heifers Bred Four to Six Months: Supreme Individual 1290.00. Approved 940.00-1050.00, Crossbreds 1025.00. Medium 775.00-875.00. Common 670.00-710.00, Crossbreds 520.00-710.00. Heifers Bred One to Three Months: Approved 870.00-1025.00. Medium 810.00-850.00. Open heifers: Approved 200-300 lbs 400.00-460.00, Crossbreds 380.00, 400-500 lbs 510.00-550.00. Medium 200-300 lbs 270.00-325.00, 400-500 lbs 400.00-435.00, Crossbreds 360.00, 500-600 lbs 500.00-550.00, Crossbreds 430.00-500.00, 600-700 lbs 450.00-470.00. Fresh Milking Heifers and Cows: Approved 1150.00-1175.00, Medium 875.00-1085.00. Common 560.00-750.00. Bred and Springer Cows: Medium 770.00-900.00. Baby Calves: Holstein Heifers Individual 280.00. Holstein Bulls 70.00-120.00. Jersey Heifers 185.00-225.00. Jersey Bulls 50.00-90.00. Crossbred Heifers Individual 160.00. Crossbred Bulls 60.00-140.00. Beef Cross Heifers Individual 160.00. Beef Cross Bulls 130.00-250.00.

Montgomery County - Sheep and Goat Auction for 04/13/2017

Receipts: 470 Last Month: 420

SHEEP: 330 head (prices per hundred weight) Slaughter Lambs: Choice and Prime 2-3 45-75 lbs 225.00-235.00, hair cross 205.00-215.00. Slaughter Ewes: Utility 1-2 100-250 lbs 57.00-73.00. Replacement Ewes: young mostly 3 yrs to solid mouth 120-180 lbs w/baby lambs 205.00-220.00, ind family 250.00; young ewes 60-110 lbs turnout 90.00-105.00. Feeder Lambs: Medium and Large 1-2 28-41 lbs 225.00-245.00, few 260.00-280.00; hair cross 210.00-220.00. Slaughter Bucks: Utility and Good 2-3 few 150-170 lbs 68.00-71.00; ind 245 lbs 57.00.

GOATS: 140 head (prices per hundred weight) Slaughter Kids: Selection 1 few 43-68 lbs 280.00-285.00; Selection 1-2 45-70 lbs 265.00-270.00; Selection 2 40-60 lbs few 230.00-250.00; Selection 3 Dairy cross 32-36 lbs 165.00-170.00; lot 41 lbs 205.00. Nannies: Selection 1-2 few 90-125 lbs 110.00-120.00. Replacement Nannies: Selection 1-2 young turnout 65-110 lbs 125.00-140.00. Billies: Selection 1-2 couple 155-175 lbs 115.00-122.50.

WEEKLY COMMODITY GRAIN FUTURES TRENDS

Compared to last Friday: Soybeans .02 to .06 lower, Wheat .15 to .24 lower, Corn .12 to .15 lower, Kansas City Wheat .19 to .23 lower, Soybean Meal 4.90 to 8.20 lower..

Daily Grain Futures Closes

	Mon.	Tues.	Wed.	Thu.	Fri.
Soybeans					
May	953 1/4	946	950 1/4	946 3/4	951
Jul	963 3/4	956 1/4	960 1/2	956 3/4	960 3/4
Aug	965 1/2	958 1/4	962	958 1/4	962
Sep	963 1/2	957	959 1/2	955	960 1/4
Nov	962 1/4	956 3/4	958 1/4	953 3/4	959 1/4
Wheat					
May	421	422 1/2	419	406 1/4	405
Jul	435 3/4	437	434 1/2	421 3/4	421
Sep	449 1/2	450 3/4	448 1/2	436 1/2	435 1/2
Dec	470	472	470 1/2	459 1/2	459 1/4
Mar	487 1/4	489 1/2	488	477 3/4	478 1/4
Corn					
May	366 1/2	361 3/4	361 3/4	357 3/4	357
Jul	373 1/4	368 1/4	368 1/4	364 1/4	363 3/4
Sep	380	375 3/4	375 3/4	371 3/4	371
Dec	390 1/4	386 1/4	386 1/2	382 1/2	382
Mar	399 3/4	396	396 1/4	392 1/4	391 3/4
KC Wheat					
May	416 1/4	419 1/4	416 3/4	402 3/4	404 1/2
Jul	429	432	429 1/2	415 1/2	417 1/4
Sep	445	448	445 1/2	431 3/4	433 3/4
Dec	470 1/4	474 1/4	472	458 3/4	460 1/2
Mar	487 1/4	491 3/4	489 3/4	476 1/2	478 1/4
SB Meal					
May	313.40	312.20	310.80	307.90	309.60
Jul	317.70	316.60	315.20	311.90	313.60
Aug	318.40	317.50	316.30	312.90	314.70
Sep	318.00	317.60	316.50	313.10	315.40
Oct	316.60	316.60	315.50	312.20	314.70

WEEKLY COMMODITY FUTURES TRENDS

Compared to last week: Live Cattle 1.05 to 4.43 higher, Lean Hogs 3.95 to 5.28 lower, Feeder Cattle .75 to 2.08 higher.

Daily Futures Closes

	Mon.	Tues.	Wed.	Thu.	Fri.
Cattle					
Apr	126.42	126.77	127.92	129.62	129.80
Jun	115.57	115.65	115.95	116.47	116.70
Aug	111.55	111.82	112.27	112.80	112.77
Oct	110.82	110.95	111.32	111.60	111.62
Dec	111.62	111.72	112.02	112.17	112.27
Lean Hogs					
Apr	61.97	—	—	—	—
May	67.72	67.15	65.87	63.80	63.02
Jun	72.35	71.50	69.95	68.67	68.32
Jul	73.35	72.90	71.50	70.17	69.52
Aug	73.62	73.40	71.80	70.60	70.22
Fdr Cat					
Apr	139.05	138.67	138.67	137.90	138.55
May	140.15	140.07	140.32	139.75	139.25
Aug	142.22	142.17	142.95	142.45	142.25
Sep	142.40	142.27	142.82	142.42	142.32
Oct	141.62	141.42	141.75	141.62	141.70
Milk					
Apr	15.24	15.24	15.21	15.18	15.20
May	15.14	15.21	15.16	15.36	15.63
Jun	15.29	15.40	15.34	15.54	15.87

INTERIOR MISSOURI DIRECT HOGS

Weekly Receipts: 1935 Week ago: 2518 Year ago: 2259
Compared to last week, barrows and gilts 1.00 to 2.00 lower. Sows steady to 5.00 lower.

BARROWS AND GILTS: SOWS:
Base carcass meat price 47.00- 300-500 lbs. 27.00-35.00
49.00. weekly top Mon 50.00 Over 500 lbs. 32.00-39.00

WEEKLY MARKET SUMMARY
 (USPS 597250)
 To be published weekly by the
 Missouri Department of Agriculture
 1616 Missouri Blvd.
 Jefferson City, MO 65109

Postmaster: Send address changes to:
 Missouri Department of Agriculture
 P.O. Box 630
 Jefferson City, MO 65102

Periodicals postage paid at
 Jefferson City, Missouri

Market News Hotline
1-573-522-9244

April 21, 2017

MISSOURI GRAIN WEEKLY TRENDS

Weekly Trends: Soybeans .01 lower to .06 higher, Soft Wheat .17 to .24 lower, Corn .11 to .14 lower, Sorghum .25 lower.

Area	#1 Soy-beans	#2 Soft Wheat	#2 Corn	#2 Grain Sorghum
Kansas City				
Friday**	Holiday			
Monday	9.03-9.23	3.61-3.78	3.31-3.51	5.64
Tuesday	8.96-9.21	3.63-3.82	3.26-3.47	5.57
Wednesday	9.00-9.25	3.59-3.79	3.26-3.47	5.57
Thursday	9.06-9.22	3.51-3.71	3.22-3.46	5.50
Friday	9.11-9.26	3.50-3.70	3.22-3.45	5.48
St. Louis				
Friday**	Holiday			
Monday	9.54-9.55	4.01-4.26	3.77-3.79	5.46
Tuesday	9.49	4.02-4.29	3.72-3.73	5.37
Wednesday	9.53	3.99-4.26	3.72-3.73	5.37
Thursday	9.49-9.50	3.86-4.13	3.69-3.70	5.30
Friday	9.58	3.85-4.12	3.69	5.30
Central				
Friday**	Holiday			---
Monday	8.93-8.98	3.31-3.46	3.33-3.39	---
Tuesday	8.86-8.91	3.32-3.48	3.29-3.34	---
Wednesday	8.90-8.95	3.29-3.44	3.29-3.34	---
Thursday	8.87-9.01	3.16-3.31	3.25-3.30	---
Friday				---
S.E. MO				
Friday**	Holiday			---
Monday	9.44-9.47	4.30	3.69-3.71	---
Tuesday	9.39-9.40	4.30	3.63-3.66	---
Wednesday	9.43-9.45	4.24	3.63-3.66	---
Thursday	9.39-9.46	4.11	3.60-3.62	---
Friday	9.50-9.56	4.10	3.60-3.64	---

(PRICES PER BU. EXCEPT GR. SORG. PER CWT)
 *NEW CROP **PREVIOUS WEEK'S PRICES

Missouri Crop Progress and Condition Report

Temperatures averaged 63.7 degrees, 9.4 degrees above normal. Precipitation averaged 0.32 inches statewide, 0.75 inches below normal. There were 4.4 days suitable for fieldwork for the week ending April 16. Topsoil moisture supply was rated 2 percent very short, 12 percent short, 72 percent adequate, and 14 percent surplus. Subsoil moisture supply was rated 5 percent very short, 18 percent short, 68 percent adequate, and 9 percent surplus. Corn planting was 17 percent complete, 36 percentage points behind the previous year and 8 percentage points behind the 5-year average. Corn emerged progressed to 1 percent. Cotton planting was 5 percent complete. Rice planting progressed to 36 percent complete. Sorghum planting progressed to 8 percent. Winter wheat headed reached 23 percent. Winter wheat condition was rated 2 percent poor, 32 percent fair, 58 percent good, and 8 percent excellent. Pasture and range condition was rated 2 percent poor, 29 percent fair, 67 percent good, and 2 percent excellent. Spring tillage is 51 percent complete compared to 45 percent for the 5-year average.