

Weekly Market Summary

Published by:
Missouri Department of Agriculture
Ag Business Development Division
Market News Program



Chris Chinn, Director
 Ken Struempfl, Division Director
 Tony Hancock, Editor
 agmarketnews.mo.gov
<http://www.ams.usda.gov/marketnews.htm>

Eric R. Greitens, Governor

Volume XXXVII, Number 18 ♦ P.O. Box 630, Jefferson City, MO 65102 ♦ (573) 751-4211 ♦ Friday May 05, 2017

MISSOURI WEEKLY FEEDER CATTLE WEIGHTED AVERAGE REPORT

Receipts: 19,245 Week ago: 33,074 Year ago: 25,411
 Steers and Heifers Medium and Large 1 Hols. Large 3

<u>Fdr. STEERS:</u>		<u>Fdr. HEIFERS:</u>		<u>Hols. STEERS</u>	
365 lbs.	203.92	366 lbs.	172.95	Scarce	Scarce
453 lbs.	197.38	455 lbs.	165.68		
543 lbs.	182.48	543 lbs.	155.90		
643 lbs.	166.78	638 lbs.	150.78		
737 lbs.	154.36	743 lbs.	140.40		
836 lbs.	146.25	838 lbs.	129.46		
921 lbs.	142.58	930 lbs.	125.77		
1046 lbs.	131.42				

SOUTHERN MISSOURI WEEKLY SUMMARY (West Plains, Ava)

Receipts: 2978 Weeks ago: 5073 Year ago: 4295
 Compared to last week, steers under 500 lbs 15.00 to 20.00 higher, over 500 lbs 5.00 to 10.00 higher. Heifers under 600 lbs 10.00 to 15.00 higher, over 600 lbs 6.00 to 8.00 higher. Slaughter cows and bulls steady to 3.00 higher.

<u>STEERS:</u> Medium and Large 1		<u>HEIFERS:</u> Medium and Large 1	
300-400 lbs.	202.50-230.00	300-400 lbs.	170.00-195.00
400-500 lbs.	186.00-224.00	400-500 lbs.	156.00-181.00
500-600 lbs.	165.00-195.00	500-600 lbs.	142.50-163.00
600-700 lbs.	152.50-169.00	600-700 lbs.	143.00-150.50
700-750 lbs.	149.00-154.50	750-800 lbs.	136.00-137.00
800-900 lbs.	142.50-148.00	Pkg 855 lbs.	129.00

<u>Holsteins:</u> Large 3	<u>SLAUGHTER COWS:</u> Breaking and Boning (70-85% lean) 62.50-69.00, high dressing 67.00-78.00. Lean (85-90%) 55.00-68.00
Scarce	Scarce

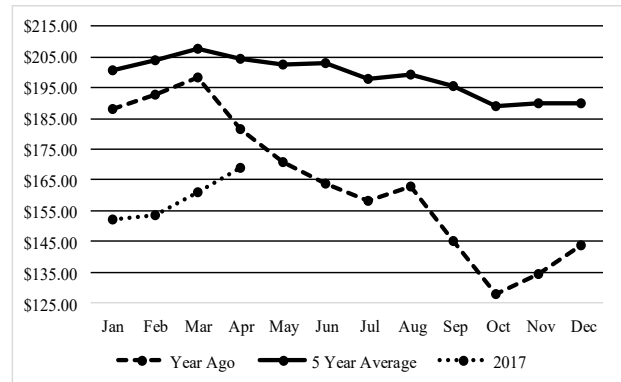
SLAUGHTER BULLS: Yield Grade 1-2 1215-2235 lbs. 87.00-96.00, high dressing 97.00-107.00, low dressing 73.50-87.00

REPLACEMENT COWS: Medium and Large 1-2 2-6 yrs 940-1460 lbs 2nd to 3rd stage 1050.00-1200.00; 7yrs to short solid 1012-1430 lbs 2nd to 3rd stage 950.00-1175.00 per head.

COW & CALF PAIRS: Medium and Large 1-2 2-7 yrs 815-1145 lbs with 100-150 lb calves 1250.00-1500.00 per pair

Medium and Large 2 2-7 yrs 765-1235 lbs 2nd to 3rd stage 750.00-1000.00 per head

Historical Feeder Steers Medium and Large 1 500-600 lbs. Weighted Average



*Graph is updated the first Friday of each month.

Year Ago Slaughter Steers and Heifers:

Northeast Missouri: Steers: Choice 2-3 1200-1400 lbs 120.25-122.25
 Heifers: Choice 2-3 pkg 1321 lbs 121.25

East Central Missouri: Choice 2-4 lot 1500 lbs 120.25

SOUTHWEST MISSOURI WEEKLY SUMMARY (Joplin and Springfield)

Feeder Cattle Receipts: 3344 Week ago: 6185 Year ago: 5533
 Cow and Bull Receipts: 676 Week ago: 1050 Year ago: 1158
 Compared to last week, feeders 2.00 to 10.00 higher, except calves under 450 lbs 15.00 to 20.00 higher late week. Slaughter cows steady to 3.00 higher with the advance late week. Slaughter bulls 2.00 to 3.00 higher.

<u>STEERS:</u> Medium and Large 1		<u>HEIFERS:</u> Medium and Large 1	
350-400 lbs.	189.00-205.00	300-400 lbs.	170.00-185.00
400-500 lbs.	174.00-203.00	400-500 lbs.	156.00-177.50
500-600 lbs.	161.00-191.50	500-600 lbs.	147.00-162.00
600-700 lbs.	155.00-172.00	600-700 lbs.	138.00-149.00
700-800 lbs.	145.00-152.00	700-800 lbs.	129.00-137.00
800-850 lbs.	144.00-147.00		

<u>HOLSTEINS:</u> Large 3	<u>SLAUGHTER COWS:</u> Breaking and Boning (70-85% lean) 63.00-71.00, high dressing 67.50-79.00. Lean (85-90%) 53.00-63.00
Pkg 504 lbs.	85.00

SLAUGHTER BULLS: Yield Grade 1-2 1050-2205 lbs 87.00-96.00, high dressing 96.50-108.50, low dressing 75.00-87.00

REPLACEMENT COWS: Medium and Large 1-2 2-7 yrs 1010-1350 lbs 2nd to 3rd stage 1050.00-1450.00; 7 yrs to aged 1060-1278 lbs 2nd to 3rd stage 775.00-1000.00 per head

COW & CALF PAIRS: Medium and Large 1-2 2-7 yrs 910-1285 lbs with babies to 300 calves 1275.00-1510.00; short solid to aged 1080-1290 lbs with 160-225 lb calves 1200.00-1250.00 per pair

The Weekly Market Summary is available to anyone for a \$25.00 annual subscription fee. To subscribe, send your check or money order to: Weekly Market Summary, Missouri Department of Agriculture, P.O. Box 630, Jefferson City, MO 65102.

WEST CENTRAL MISSOURI WEEKLY SUMMARY

(Sedalia, Kingsville, Butler)

Receipts: 1943 Week Ago: 3168 Year ago: 3215

Compared to last week, feeder calves steady to 10.00 higher, yearlings sold with a higher undertone. Slaughter cows steady to 4.00 higher.

FEEDER STEERS:

Medium and Large 1

400-500 lbs.	172.00-206.00
500-600 lbs.	168.50-193.00
600-700 lbs.	159.50-180.00
700-800 lbs.	155.00-160.25
800-900 lbs.	139.00-147.10

FEEDER HEIFERS:

Medium and Large 1

400-500 lbs.	152.50-169.50
500-600 lbs.	142.75-166.00
600-700 lbs.	138.25-154.50
700-800 lbs.	133.25-135.10
800-900 lbs.	127.25-131.50

SLAUGHTER BULLS: Yield Grade 1-2 1420-2190 lbs 86.00-96.00, high dressing 109.00 low dressing 81.00-83.00SLAUGHTER COWS: Breaking and Boning (70-85% lean) 62.50-71.00. Lean (85-90%) 55.00-66.00COW & CALF PAIRS: ScarceREPLACEMENT COWS: Medium and Large 1-2 2-7 yrs 1075-1345 lbs 2nd to 3rd stage 1135.00-1335.00 per head**EAST CENTRAL MISSOURI WEEKLY SUMMARY**

(Bowling Green, Kingdom City, Macon, Boonville)

Receipts: 4583 Week ago: 6906 Year ago: 3393

Compared to last week, feeders firm to 5.00 higher, instances 8.00 higher on steers. Slaughter cows steady to firm.

FEEDER STEERS:

Medium and Large 1

400-500 lbs.	188.00-202.00
500-600 lbs.	173.00-192.00
600-700 lbs.	159.00-177.50
700-800 lbs.	149.00-161.50
800-900 lbs.	143.00-147.25

FEEDER HEIFERS:

Medium and Large 1

300-400 lbs.	160.00-176.00
400-500 lbs.	153.00-169.00
500-600 lbs.	144.00-160.00
600-700 lbs.	139.00-152.00
700-800 lbs.	137.00-147.00

SLAUGHTER STEERS and HEIFERS: Choice 2-3 1150-1650 lbs 135.00-140.50. Select and Choice 1-2 1050-1600 lbs 127.00-133.00SLAUGHTER COWS: Breaking and Boning, (70-85% lean) Average dressing 63.00-73.00, high dressing 70.00-76.00, Lean (85-90%) 60.00-68.00REPLACEMENT COWS: ScarceSLAUGHTER BULLS: Yield Grade 1-2 1200-2550 lbs 86.50-98.00, high dressing 99.00-104.00**NORTHEAST MISSOURI WEEKLY SUMMARY**

(Palmyra, Unionville, Green City, New Cambria)

Feeder Cattle Receipts: 4882 Week ago: 4014 Year ago: 5007

Slaughter Cattle Receipts: 24 Week ago: 60 Year ago: 53

Compared to last week, feeders steady to 5.00 higher, spots 10.00 higher. Slaughter cows steady to 2.00 higher. Slaughter steers and heifers 3.00 to 4.00 higher.

FEEDER STEERS:

Medium and Large 1

300-400 lbs.	200.50-231.00
400-500 lbs.	180.00-220.00
500-600 lbs.	177.00-212.00
600-700 lbs.	157.25-180.35
700-800 lbs.	150.00-155.50
800-900 lbs.	143.00-156.25

FEEDER HEIFERS:

Medium and Large 1

300-400 lbs.	161.00-185.00
400-500 lbs.	158.50-177.50
500-600 lbs.	138.00-172.00
600-700 lbs.	137.00-167.75
700-800 lbs.	133.50-151.50
800-900 lbs.	127.00-129.50

SLAUGHTER STEERS: Choice 2-3 1200-1250 lbs 139.00SLAUGHTER COWS: Breaking and Boning (75-85% lean) 61.00-72.00, high dressing 70.00-76.00. Lean (85-90%) 61.50-66.50SLAUGHTER HEIFERS: Choice 2-3 1150-1200 lbs 136.00-137.25SLAUGHTER BULLS: Yield Grade 1-2 1300-2400 lbs 87.50-98.50COW & CALF PAIRS: Medium and Large 1 few pkgs 3-4 yrs 1025-1200 lbs with 100-200 lb calves 2050.00-2250.00 per pairREPLACEMENT COWS: Medium and Large 1-2 3-6 yrs 1100-1315 lbs 2nd to 3rd stage 1425.00-1550.00 per head**SOUTHEAST MISSOURI WEEKLY SUMMARY**

(Farmington, Patton)

Receipts: 1038 Week ago: 2543 Year ago: 1763

Compared to a week ago, feeders 1.00 to 6.00 higher. Slaughter cows and bulls 2.00 higher.

FEEDER STEERS:

Medium and Large 1

300-400 lbs.	170.00-201.00
400-500 lbs.	160.00-185.00
500-600 lbs.	152.00-172.50
600-700 lbs.	137.75-159.50
700-800 lbs.	132.00-150.00

FEEDER HEIFERS:

Medium and Large 1

300-400 lbs.	146.00-172.00
400-500 lbs.	139.00-165.00
500-600 lbs.	130.00-149.00
600-700 lbs.	126.00-137.50
700-800 lbs.	117.00-130.00

REPLACEMENT COWS: Medium and Large 1-2 5 yrs to short solid 820-1315 lbs 2nd to 3rd stage 840.00-1125.00 per headSLAUGHTER COWS: Breaking and Boning (75-85% lean) 55.00-65.50. Lean (85-90% lean) 45.00-57.50COW & CALF PAIRS: Medium and Large 1-2 5 yrs to short solid 780-1270 lbs with 120-230 lbs 800.00-1375.00 per pairSLAUGHTER BULLS: Yield Grade 1-2 1320-2095 lbs 80.50-88.00, high dressing 90.00-93.50**SOUTH CENTRAL MISSOURI WEEKLY SUMMARY**

(Cuba, Vienna) (04/28/17)

Receipts: 2694 Week ago: 2780 Year ago: 2440

Compared to last week, feeders steady to 6.00 higher. Slaughter cows uneven 2.00 lower to 2.00 higher.

FEEDER STEERS:

Medium and Large 1

300-400 lbs.	182.50-211.00
400-500 lbs.	171.50-196.00
500-600 lbs.	162.00-183.00
600-700 lbs.	143.00-164.25
700-800 lbs.	138.50-139.50

FEEDER HEIFERS:

Medium and Large 1

300-400 lbs.	164.00-178.00
400-500 lbs.	146.00-170.00
500-600 lbs.	140.00-155.50
600-700 lbs.	135.00-144.00
700-800 lbs.	126.50-131.75

REPLACEMENT COWS: Medium and Large 1-2 few 3 yrs to short and solid 1025-1325 lbs 2nd to 3rd stage 950.00-1125.00 per headSLAUGHTER COWS: Breaking and Boning (70-85% lean) 60.00-68.00. Lean (85-90%) 55.00-64.00COW & CALF PAIRS: Medium and Large 1-2 2 yrs 850-950 lbs with 125-175 lb calves 1450.00-1475.00 per pairSLAUGHTER BULLS: Yield Grade 1-2 1400-2000 lbs 86.00-96.00, high dressing 100.00-105.00**NORTHWEST MISSOURI WEEKLY SUMMARY**

(St Joseph)

Receipts: 2085 Weeks ago: 3458 Year ago: 1573

Compared to last week, all weights of steers and heifer calves under 550 lbs 5.00 to 12.00 higher, heifers 550-650 lbs 3.00 to 5.00 lower, over 650 lbs steady to 2.00 higher. Slaughter cows and bulls mostly steady.

FEEDER STEERS:

Medium and Large 1

400-500 lbs.	188.50-210.00
500-600 lbs.	175.00-200.00
600-700 lbs.	155.00-180.00
700-800 lbs.	156.25-162.00
800-900 lbs.	138.00-152.50

FEEDER HEIFERS:

Medium and Large 1

300-400 lbs.	167.50-184.50
400-500 lbs.	157.50-177.50
500-600 lbs.	142.00-166.50
600-700 lbs.	135.00-151.00

SLAUGHTER BULLS: Yield grade 1-2 1405-1640 lbs 88.00-90.00, high dressing 88.00-98.00SLAUGHTER COWS: Breaking and Boning (70-85% lean) 60.00-70.00, high dressing 70.00-72.00. Lean (85-90%) 55.00-62.00BRED COWS: Medium and Large 1 3 yrs ind 1180 lbs 2nd stage 1300.00 per head; 6-7 yrs 1105-1375 lbs 2nd to 3rd stage 1175.00-1250.00 per headCOW-CALF PAIRS: Medium and Large 1 2-3 yrs 1000-1300 lbs with 150-200 lb calves 1560.00-1725.00; few 5-6 yrs 1200-1300 lbs with 150-175 lb calves 1725.00 per pair

MISSOURI WEEKLY DIRECT WEANER AND FEEDER PIG REPORT

Receipts: 4480 Weaner pigs steady to 1.00 higher. Feeder pigs no sales reported. Prices per head. Early weaned pigs 10 lb. base weights FOB the farm 0% negotiated, 3623 head, 10 lbs, 36.00-37.00, weighted average 36.58. Early weaned pigs 10 lbs base weights delivered 0% negotiated, 857 head, 10 lbs 34.07

**WHOLESALE FEEDSTUFFS PRICES
(DOLLARS PER TON-BULK BASIS)**

Area	Soybean Meal 48% Solvent	Cottonseed Meal 41% Solvent	Meat Meal	Wheat Middlings
Kansas City	298.50	215.00	235.00	75.00
St. Louis	333.50	N/A	255.00	62.50

**MISSOURI WEEKLY DIRECT
SLAUGHTER CATTLE REPORT**

Weekly Receipts: 360 Week ago: 600 Year ago: 360
Trading from last Friday through Friday morning remains light to moderate as bids and asking prices are higher.

LIVE STEERS & HEIFERS: 1 load 142.00 FOB
DRESSED STEERS & HEIFERS: 2 loads 230.00

GRADE AND WEIGHT (Grid):
Wed 5 loads 231.00-233.00; Thu 7 loads 234.00-235.00

By-Product Feed Prices

Alfalfa Pellets, St. Louis MO 235.00; Corn Gluten Feed pelleted, Butler, MO FOB out; Distillers Grain Dried, FOB Carrollton, MO 100.00; Soy Hulls Kansas City, MO 130.00. Prices per ton.

Springfield Livestock Market

Special Dairy Heifer Sale Report for 04/25/2017

Receipts: 738 Last Month Special: 950 Year Ago: 637
Springer Heifers bred seven to nine months: Supreme 1325.00-1560.00. Approved 1000.00-1285.00. Medium 825.00- 975.00. Heifers bred three to six months: Supreme 1260.00-1350.00. Approved 1000.00-1250.00. Medium 800.00-935.00. Common 450.00-750.00. Heifers bred one to three months: Supreme 1330.00-1350.00. Approved 1150.00-1175.00. Medium 800.00-975.00. Common 500.00-520.00. Open Heifers: Approved: 200-300 lbs 260.00-435.00; 300-400 lbs 400.00-575.00, lot 10 head 349 lbs 630.00; 400-500 lbs 550.00-760.00; 500-600 lbs 710.00-835.00; 600-700 lbs 775.00-800.00. Medium: 500-600 lbs 410.00-610.00; 600-700 lbs crossbreds 550.00-610.00; few crossbreds 705 lbs 750.00. Replacement Cows: Fresh Heifers and Cows: Supreme few 1450.00-1675.00. Approved few 1220.00-1275.00. Medium 900.00-1150.00, few crossbreds 1075.00-1100.00. Common 500.00-875.00, crossbreds 390.00-800.00. Milking Cows: Supreme 1500.00-1750.00. Approved 1350.00-1475.00. Medium 1000.00-1325.00. Common 550.00- 975.00. Springer Cows: Supreme few 1575.00. Medium 1125.00-1200.00. Bred Cows: Supreme 1575.00-1800.00. Approved 1350.00-1575.00. Medium 1000.00-1375.00. Common 480.00- 925.00, crossbreds 635.00-725.00. Baby Calves: Holstein heifers 235.00-275.00. Holstein bulls 110.00-170.00. Jersey bulls ind 65.00. Crossbred heifer ind 175.00. Crossbred bulls 145.00-180.00. Beef cross bulls ind 240.00.

Diamond - Sheep and Goat Auction for 05/05/2017

Receipts: 1812 Last Month: 2012 Last Year: 1288
SHEEP: Feeder Lambs: Medium and Large 2-3 28-35 lbs 200.00-205.00. Medium and Large 2-3 24-38 lbs 155.00-175.00. Slaughter Wool Lambs: Choice and Prime 1-2 42-95 lbs 202.50-227.50; 100-125 lbs 150.00-145.00. Slaughter Hair lambs: Good and Choice 1-3 41-97 lbs 215.00-227.50. Utility and Good 1-2 41-90 lbs 202.50-212.50. Replacement Hair Ewes: Medium and Large 2-3 86-120 lbs 160.00-180.00. Medium and Large 3-4 60-125 lbs 105.00-125.00. Slaughter Wool Ewes: Utility-Good 2-3 95-260 lbs 65.00-85.00. Slaughter Hair Ewes: Good 2-3 82-125 lbs 85.00-97.50. Utility 2-3 90-115 lbs 65.00-80.00. Slaughter Rams: Utility and Good 2-3 90-205 lbs 80.00-97.50. Bottle Babies: Medium and Large 1-2 65.00-70.00 Per Head. Feeder kids: Selection 1 32-39 lbs 240.00-260.00. Selection 2 25-35 lbs 200.00-230.00. Selection 3 20-30 lbs 150.00-157.50. Slaughter Kids: Selection 1 42-60 lbs 280.00-300.00; 75-105 lbs 180.00-200.00. Selection 2 40-65 lbs 240.00-255.00. Selection 3 42-55 lbs 200.00-225.00. Several Families with single and twin kids. Selection 2 60.00-90.00 Per Head. Replacement Does: Selection 1 150.00-300.00 Per Head. Slaughter Does: Selection 1 and 2 70-152 lbs 100.00-130.00. Selection 3 80-100 lbs 85.00-100.00. Slaughter Bucks: Selection 1 115-130 lbs 152.50-190.00. Selection 2 105-150 lbs 100.00-125.00.

WEEKLY COMMODITY GRAIN FUTURES TRENDS

Compared to last Friday: Soybeans .13 to .18 higher, Wheat .06 to .11 higher, Corn .03 to .04 higher, Kansas City Wheat .12 to .14 higher, Soybean Meal .30 to 1.10 higher.

Daily Grain Futures Closes

	Mon.	Tues.	Wed.	Thu.	Fri.
Soybeans					
May	959	958	965 1/2	965 1/4	963
Jul	970 1/4	968 3/4	975 1/4	974 1/4	973
Aug	971 1/2	970 1/4	976 1/2	974	973 3/4
Sep	967	966 1/4	971 3/4	967 1/2	968 1/2
Nov	964 1/2	964 3/4	970	964 3/4	966 1/2
Wheat					
May	442 3/4	441 1/2	443	426	427 1/2
Jul	456	454	454	437 3/4	442 1/4
Sep	468 3/4	468	467 1/4	452 1/4	456 1/4
Dec	490	489 1/4	488	473	476 1/4
Mar	507	506	505	490 1/4	493 1/4
Corn					
May	369 1/4	364	366 1/4	358	361 3/4
Jul	377 1/2	372 1/4	374 3/4	366 1/2	370 3/4
Sep	384 3/4	379 3/4	382	374	378 1/4
Dec	394 1/2	390	392 1/4	384 1/2	388 1/2
Mar	404	399 3/4	402	394 1/4	398
KC Wheat					
May	452 3/4	454 3/4	450 1/2	432 1/2	438
Jul	465 3/4	467 3/4	463 1/4	444 1/2	450
Sep	479 1/2	482 1/2	479	461	466 3/4
Dec	501 1/2	504 1/4	502 1/4	485	490 3/4
Mar	514 1/4	516 3/4	515 3/4	498 1/2	504 1/4
SB Meal					
May	314.30	310.80	314.60	314.10	312.30
Jul	318.60	315.00	318.80	318.60	316.90
Aug	319.50	316.20	319.80	319.10	317.60
Sep	319.60	316.50	319.80	319.10	317.60
Oct	318.20	315.50	318.50	317.50	316.50

WEEKLY COMMODITY FUTURES TRENDS

Compared to last week: Live Cattle Jun and Aug 1.12 to 4.28 higher and others 1.85 to 2.43 lower, Lean Hogs .82 to 2.43 higher, Feeder Cattle 1.28 to 5.73 lower.

Daily Futures Closes

	Mon.	Tues.	Wed.	Thu.	Fri.
Cattle					
Jun	124.12	127.05	130.05	131.30	128.30
Aug	120.17	120.80	123.80	124.17	121.17
Oct	117.90	117.60	119.85	119.35	116.47
Dec	118.97	119.25	120.55	119.57	116.82
Feb	119.07	119.25	120.10	119.17	116.80
Lean Hogs					
May	66.12	66.95	67.95	69.00	69.40
Jun	73.27	74.15	75.55	76.47	76.32
Jul	74.87	75.70	76.40	77.35	76.82
Aug	74.97	75.35	75.87	76.62	76.85
Oct	66.50	66.57	67.10	67.35	67.47
Fdr Cat					
May	148.60	149.62	153.30	148.27	143.77
Aug	153.75	155.60	160.10	157.92	153.42
Sep	153.67	155.32	159.32	156.60	152.10
Oct	152.62	154.07	157.07	153.27	148.77
Nov	151.12	152.50	154.97	150.17	145.67
Milk					
May	15.29	15.33	15.32	15.48	15.60
Jun	15.44	15.55	15.41	15.69	15.88
Jul	16.01	16.03	16.06	16.21	16.33

INTERIOR MISSOURI DIRECT HOGS

Weekly Receipts: 2035 Week ago: 2155 Year ago: 2488
Compared to last week, barrows and gilts 5.00 to 7.00 higher. Sows 5.00 to 7.00 higher

BARROWS AND GILTS: Base carcass meat price 52.00-56.00. weekly top Fri 56.00
SOWS: 300-500 lbs. 34.00-46.00 Over 500 lbs. 38.00-50.00

WEEKLY MARKET SUMMARY
 (USPS 597250)
 To be published weekly by the
 Missouri Department of Agriculture
 1616 Missouri Blvd.
 Jefferson City, MO 65109

Postmaster: Send address changes to:
 Missouri Department of Agriculture
 P.O. Box 630
 Jefferson City, MO 65102

Periodicals postage paid at
 Jefferson City, Missouri

Market News Hotline
1-573-522-9244

May 05, 2017

MISSOURI GRAIN WEEKLY TRENDS

Weekly Trends: Soybeans .16 to .29 higher, Soft Wheat .05 to .25 higher, Corn unchanged to .08 higher, Sorghum .18 to .21 higher.

Area	#1 Soybeans	#2 Soft Wheat	#2 Corn	#2 Grain Sorghum
Kansas City				
Friday**	9.05-9.21	3.63-3.84	3.23-3.49	5.73
Monday	9.30-9.35	4.08-4.16	3.37-3.60	5.83-5.92
Tuesday	9.28-9.34	4.16-4.17	3.32-3.57	5.75-5.83
Wednesday	9.35-9.45	4.04-4.11	3.34-3.60	5.78-5.98
Thursday	9.34-9.44	3.88-3.95	3.26-3.51	5.64-5.82
Friday	9.34-9.43	3.88-3.99	3.30-3.54	5.66-5.91
St. Louis				
Friday**	9.56	4.27	3.71-3.72	5.32
Monday	9.67-9.71	4.36-4.50	3.78-3.82	5.66
Tuesday	9.69	4.19-4.48	3.71-3.74	5.57
Wednesday	9.74-9.76	4.19-4.46	3.76-3.79	5.60
Thursday	9.73-9.79	4.02-4.27	3.68-3.74	5.46
Friday	9.72-9.81	4.07-4.32	3.72-3.76	5.53
Central				
Friday**	8.95-9.01	3.44	3.28-3.34	—
Monday	9.15	4.06*	3.43-3.45	—
Tuesday	9.13-9.14	4.04*	3.37-3.40	—
Wednesday	9.20	4.04*	3.40-3.42	—
Thursday	9.19	3.87-3.88*	3.31-3.34	—
Friday	9.18	3.92*	3.36-3.38	—
S.E. MO				
Friday**	9.45-9.53	4.31	3.63-3.67	—
Monday	9.59-9.68	4.55-4.69*	3.73-3.74	—
Tuesday	9.58-9.67	4.53-4.67*	3.60-3.72	—
Wednesday	9.65-9.73	4.64-4.67*	3.70-3.71	—
Thursday	9.71-9.76	4.39-4.50*	3.63-3.65	—
Friday	9.73-9.76	4.40-4.55*	3.70	—

(PRICES PER BU. EXCEPT GR. SORG. PER CWT)
 *NEW CROP **PREVIOUS WEEK'S PRICES

Missouri Crop Progress and Condition Report

Significant rain fell over the past week. Temperatures averaged 56.1 degrees, 2.8 degrees below normal. Precipitation averaged 6.07 inches statewide, 5.04 inches above normal. There were 2.1 days suitable for field-work for the week ending April 30. Topsoil moisture supply was rated 38 percent adequate and 62 percent surplus. Subsoil moisture supply was rated 1 percent very short, 2 percent short, 56 percent adequate, and 41 percent surplus. Corn planting was 67 percent complete, 21 percentage points behind the previous year but 11 percentage points ahead of the 5-year average. Corn emerged progressed to 30 percent. Soybean planting was 5 percent complete. Cotton planting was 14 percent complete. Rice planting progressed to 67 percent complete. Rice emerged progressed to 36 percent. Sorghum planting was 13 percent complete. Winter wheat headed reached 76 percent. Winter wheat condition was rated 5 percent poor, 30 percent fair, 58 percent good, and 7 percent excellent. Pasture and range condition was rated 1 percent very poor, 2 percent poor, 25 percent fair, 65 percent good, and 7 percent excellent. Spring tillage is 71 percent complete compared to 68 percent for the 5-year average.