

# Weekly Market Summary

Published by:  
**Missouri Department of Agriculture**  
**Ag Business Development Division**  
**Market News Program**



Chris Chinn, Director  
 Ken Struempfl, Division Director  
 Tony Hancock, Editor  
 agmarketnews.mo.gov  
<http://www.ams.usda.gov/marketnews.htm>

Eric R. Greitens, Governor

Volume XXXVII, Number 22 ♦ P.O. Box 630, Jefferson City, MO 65102 ♦ (573) 751-4211 ♦ Friday June 02, 2017

## MISSOURI WEEKLY FEEDER CATTLE WEIGHTED AVERAGE REPORT

Receipts: 13,656 Week ago: 31,279 Year ago: 15,001  
 Steers and Heifers Medium and Large 1 Hols. Large 3

<u>Fdr. STEERS:</u>		<u>Fdr. HEIFERS:</u>		<u>Hols. STEERS</u>	
366 lbs.	199.20	367 lbs.	173.46	297 lbs.	111.23
461 lbs.	187.59	460 lbs.	159.57	358 lbs.	100.96
550 lbs.	178.02	545 lbs.	152.48	444 lbs.	93.09
636 lbs.	167.84	643 lbs.	146.72	560 lbs.	89.86
741 lbs.	154.29	751 lbs.	137.30	665 lbs.	82.18
854 lbs.	147.76	838 lbs.	136.45		
911 lbs.	138.00				

## SOUTHERN MISSOURI WEEKLY SUMMARY (West Plains, Ava)

Receipts: 5313 Weeks ago: 6717 Year ago: 3943  
 Compared to last week, feeders steady to 5.00 higher, spots 10.00 higher on steers late week. Slaughter cows and bulls steady to 5.00 higher, with the advance late week.

<u>STEERS:</u> Medium and Large 1		<u>HEIFERS:</u> Medium and Large 1	
300-400 lbs.	182.50-207.50	350-400 lbs.	167.00-180.00
400-500 lbs.	175.00-200.00	400-500 lbs.	150.00-174.00
500-600 lbs.	160.00-187.00	500-600 lbs.	144.00-159.00
600-700 lbs.	153.00-168.00	600-700 lbs.	140.00-149.50
700-800 lbs.	146.00-158.00	700-750 lbs.	136.50-140.00
800-850 lbs.	142.50-152.00	Pkg 861 lbs.	130.00

<u>Holsteins:</u> Large 3		<u>SLAUGHTER COWS:</u> Breaking and Boning (70-85% lean) 65.00-72.00, high dressing 71.00-81.50, low dressing 57.50-66.00. Lean (85-90%) 55.00-66.00	
250-300 lbs.	110.00-1140.00		
Pkg 872 lbs.	116.00-85.00-		
Few 450-500 lbs.	102.50		
Pkg 551 lbs.	95.00		
650-700 lbs.	73.00-90.00		

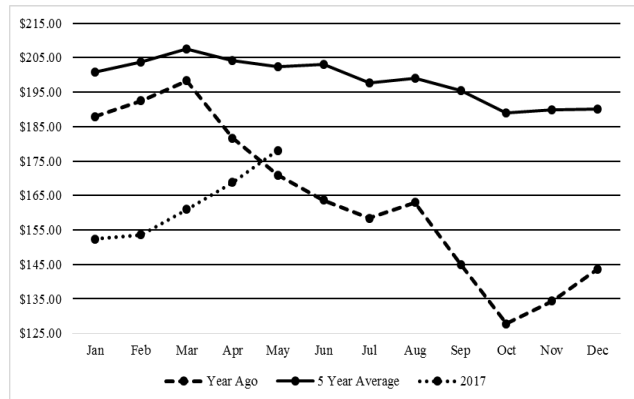
SLAUGHTER BULLS:  
 Yield Grade 1-2 1145-2645 lbs. 88.00-98.00, high dressing 97.50-108.00, low dressing 72.50-87.50

COW & CALF PAIRS:  
 Medium and Large 1 pkg 12 head 3-6 yrs 1117 lbs 3rd stage 1600.00 per head. Medium and Large 1-2 2-6 yrs 985-1532 lbs 2nd to 3rd stage 1100.00-1400.00, 1st stage 1000.00-1250.00 per head

REPLACEMENT COWS:  
 Medium and Large 1-2 2-5 yrs 1000-1365 lbs with 200-400 lb calves 1525.00-1850.00; pkg 6 pair short solid 1262 lbs with 250 lb calves 1650.00 per pair. 3-7 yrs 1115-1205 lbs with 150-200 lbs calves rebred first stage 1500.00-1625.00 per pair

The Weekly Market Summary is available to anyone for a \$25.00 annual subscription fee. To subscribe, send your check or money order to: Weekly Market Summary, Missouri Department of Agriculture, P.O. Box 630, Jefferson City, MO 65102.

## Historical Feeder Steers Medium and Large 1 500-600 lbs. Weighted Average



\*Graph is updated the first Friday of each month.

## Year Ago Slaughter Steers and Heifers:

Northeast Missouri: Steers: Choice 2-3 1150-1350 lbs. 123.50-125.00  
 Heifers: Choice 2-3 1150-1300 lbs. 123.50-124.25

East Central Missouri: Select 1-2 1100-1450 lbs. 109.00-113.00

## SOUTHWEST MISSOURI WEEKLY SUMMARY

(Joplin and Springfield)

Feeder Cattle Receipts: 1943 Week ago: 8213 Year ago: 2287  
 Cow and Bull Receipts: 630 Week ago: 3076 Year ago: 881  
 Compared to last week, Slaughter cows steady to 2.00 lower. Slaughter bulls 2.00 to 3.00 lower.

<u>STEERS:</u> Medium and Large 1		<u>HEIFERS:</u> Medium and Large 1	
300-400 lbs.	199.00-200.00	300-400 lbs.	162.50-172.00
400-500 lbs.	167.50-193.00	400-500 lbs.	150.00-163.00
500-600 lbs.	162.00-180.00	500-600 lbs.	144.00-159.00
600-700 lbs.	152.00-171.00	600-700 lbs.	136.00-146.50
700-800 lbs.	145.00-153.00	700-800 lbs.	133.00-138.00
800-900 lbs.	145.10-148.50	800-900 lbs.	134.00-134.50

HOLSTEINS:  
 Large 3

300-400 lbs.	90.00-93.00
400-500 lbs.	85.00-87.00
576 lbs.	81.00
655 lbs.	81.00

SLAUGHTER COWS: Breaking and Boning (70-85% lean) 64.00-73.00, high dressing 73.00-78.50. Lean (85-90%) 58.00-66.00

SLAUGHTER BULLS: Yield Grade 1-2 1345-2215 lbs 86.00-96.00, high dressing 95.00-104.00, low dressing 75.00-85.00

REPLACEMENT COWS:  
 Medium and Large 1-2 2-7 yrs 1085-1365 lbs 2nd to 3rd stage 1050.00-1500.00, 1st stage ind 1075.00; few short solid to aged 1100-1300 2nd to 3rd stage 750.00-975.00 per head

COW & CALF PAIRS: Medium and Large 1-2 2-3 yrs 850-1150 lbs with babies to 165 lb calves 1200.00-1325.00; broken mouth to aged 1090-1200 lbs with babies to 400 lb calves 1100.00-1300.00 per pair

**WEST CENTRAL MISSOURI WEEKLY SUMMARY**

(Sedalia, Kingsville, Butler)

Receipts: 1334 Week Ago: 3755 Year ago: 1796

Compared to last week, a very light test of feeders sold with a steady to higher undertone. Slaughter cows mostly steady.

FEEDER STEERS:

Medium and Large 1

400-500 lbs.	180.50-191.00
500-600 lbs.	168.00-192.25
600-700 lbs.	162.00-180.00
700-800 lbs.	160.00

FEEDER HEIFERS:

Medium and Large 1

300-400 lbs.	159.00-180.00
400-500 lbs.	150.00-175.00
500-600 lbs.	157.50-166.00

SLAUGHTER BULLS: Yield  
Grade 1-2 1200-2380 lbs 87.00-  
99.50, high dressing 98.00-104.50,  
low dressing 75.00-88.50

SLAUGHTER COWS: Breaking  
and Boning (70-85% lean)  
64.00-73.00. Lean (85-90%)  
58.00-66.00

COW & CALF PAIRS: ScarceREPLACEMENT COWS:  
Scarce**EAST CENTRAL MISSOURI WEEKLY SUMMARY**

(Bowling Green, Kingdom City, Macon, Boonville)

Receipts: 2825 Week ago: 5130 Year ago: 2149

Compared to last week, feeder calves mostly steady, yearlings lower undertone on light test. Slaughter cows steady to 1.00 higher.

FEEDER STEERS:

Medium and Large 1

300-400 lbs.	200.00-219.00
400-500 lbs.	185.00-211.00
500-600 lbs.	169.00-194.00
600-700 lbs.	152.00-176.00
700-800 lbs.	146.00-154.00

FEEDER HEIFERS:

Medium and Large 1

300-400 lbs.	165.00-184.00
400-500 lbs.	157.00-177.00
500-600 lbs.	145.00-165.00
600-700 lbs.	141.00-148.00
700-800 lbs.	137.00-141.50

SLAUGHTER STEERS and  
HEIFERS: Chocie 2-3 1000-  
1450 lbs 132.50-137.00

SLAUGHTER COWS: Breaking  
and Boning, (70-85% lean) Avera-  
ge dressing 65.00-72.00, high  
dressing 70.00-79.50, Lean (85-  
90%) 62.00-70.00

REPLACEMENT COWS: Medium  
and Large 1 2-6 yrs 1300-  
1450 lbs mostly 2nd stage few 3rd  
stage 1550.00-1675.00 per head

SLAUGHTER BULLS: Yield  
Grade 1-2 1200-2550 87.50-  
99.00, high dressing 99.00-102.00,  
low dressing 77.50-86.50

**NORTHEAST MISSOURI WEEKLY SUMMARY**

(Palmyra, Unionville, Green City, New Cambria)

Feeder Cattle Receipts: 1061 Week ago: 2407 Year ago: 790

Slaughter Cattle Receipts: 29 Week ago: 20 Year ago: 91

Compared to two weeks ago, calves not well tested, yearlings 5.00 to 10.00 higher, spots 15.00 higher. Slaughter steers and heifers 3.00 to 4.00 lower. (Slaughter prices week ending 05/26/17)

FEEDER STEERS:

Medium and Large 1

400-500 lbs.	190.00-196.00
500-600 lbs.	194.50-195.00
600-700 lbs.	163.00-181.75
700-800 lbs.	154.00-159.00
800-900 lbs.	151.00-159.10

FEEDER HEIFERS:

Medium and Large 1

400-500 lbs.	156.00-176.00
500-600 lbs.	145.00-160.50
600-700 lbs.	142.00-157.35
Lot 797 lbs.	139.00
Lot 825 lbs.	140.50

SLAUGHTER STEERS:  
Choice 2-3 1300-1425 lbs 133.25  
-136.50

SLAUGHTER COWS: Breaking  
and Boning (75-85% lean) 63.00-  
71.25, high dressing 69.25-72.00.  
Lean (85-90%) 62.50-68.50

SLAUGHTER HEIFERS:  
Choice 2-3 1350-1425 lbs 132.50  
-135.00

SLAUGHTER BULLS: Yield  
Grade 1-2 1650-2100 lbs 88.50-  
94.75, high dressing 97.25-  
100.25

COW & CALF PAIRS: ScarceREPLACEMENT COWS:  
Scarce**SOUTHEAST MISSOURI WEEKLY SUMMARY**

(Farmington, Patton)

Receipts: 983 Week ago: 2172 Year ago: 724

Compared to a week ago, feeders 4.00 lower to 5.00 higher. Slaughter cows and slaughter bulls 1.00 to 2.00 higher.

FEEDER STEERS:

Medium and Large 1

300-400 lbs.	186.00-205.00
400-500 lbs.	171.00-197.00
500-600 lbs.	161.00-181.00
600-700 lbs.	146.00-167.00
700-800 lbs.	135.00-138.00

FEEDER HEIFERS:

Medium and Large 1

300-400 lbs.	150.00-178.00
400-500 lbs.	142.50-159.00
500-600 lbs.	132.50-155.00
600-700 lbs.	130.00-139.00

REPLACEMENT COWS: Medium  
and Large 1-2 3 yrs to short solid  
900-1417 lbs 2nd to 3rd stage  
925.00-1400.00 per head

SLAUGHTER COWS: Breaking  
and Boning (75-85% lean) 57.50  
-67.00. Lean (85-90% lean)  
50.00-62.50

COW & CALF PAIRS: Medium  
and Large 1-2 2 yrs to short solid  
790-1280 lbs with 120-240 lb  
calves 1150-1550.00 per pair

SLAUGHTER BULLS: Yield  
Grade 1-2 1045-1995 lbs 80.00-  
89.00, high dressing 93.00-96.50

**SOUTH CENTRAL MISSOURI WEEKLY SUMMARY**

(Cuba, Vienna)

Receipts: 560 Week ago: 2404 Year ago: 559

Compared to last week, a light test of feeders, steers sold steady to 5.00 lower, heifers steady to 2.00 higher. Slaughter cows steady.

FEEDER STEERS:

Medium and Large 1 and 1-2

350-400 lbs.	187.00-196.00
450-500 lbs.	165.00-170.00
500-600 lbs.	162.50-175.00
600-650 lbs.	151.25-161.00
Pkg 703 lbs.	145.00

FEEDER HEIFERS:

Medium and Large 1 and 1-2

350-400 lbs.	160.00-165.00
400-500 lbs.	153.00-157.00
500-600 lbs.	141.00-155.50
600-700 lbs.	137.50-144.00
750-800 lbs.	126.00-132.75

REPLACEMENT COWS: Medium  
and Large 1-2 few 3-5 yrs 1100-1275  
lbs 1st to 3rd stage 960.00-1185.00  
per head

SLAUGHTER COWS: Break-  
ing and Boning (70-85% lean)  
64.00-70.50. Lean (85-90%)  
60.00-67.00

COW & CALF PAIRS: Scarce

SLAUGHTER BULLS: Yield  
Grade 1-2 1500-2050 lbs 90.00-  
97.00, high dressing 100.00-  
104.25, low dressing 71.00-  
85.00

**NORTHWEST MISSOURI WEEKLY SUMMARY**

(St Joseph)

Receipts: 1417 Weeks ago: 1267 Year ago: 890

Compared to last week, steers 650 to 700 lbs steady, other weights of steers mostly 5.00 higher, spots 8.00 higher. Heifers 400 to 500 lbs sharply lower, other weights of heifers mostly steady. Slaughter bulls steady to 3.00 higher. (Slaughter and replacement prices week ending 05/26/17)

FEEDER STEERS:

Medium and Large 1

400-500 lbs.	190.00-200.50
500-600 lbs.	179.00-193.00
600-700 lbs.	158.00-182.25
700-800 lbs.	150.00-161.00
800-900 lbs.	136.50-145.00

FEEDER HEIFERS:

Medium and Large 1

400-500 lbs.	144.00-158.50
500-600 lbs.	149.00-159.50
600-700 lbs.	143.00-161.50
700-800 lbs.	138.00
800-900 lbs.	130.00-137.00

SLAUGHTER BULLS:  
Yield grade 1-2 1350-2085 lbs  
87.00-100.00, high dressing  
103.00-113.00, low dressing  
75.00-85.00

SLAUGHTER COWS:  
Breaking and Boning (70-85% lean)  
63.00-71.50, high dressing 72.00-  
77.00. Lean (85-90%) 60.00-65.00

BRED COWS: Medium and  
Large 1-2 few 6 yrs 1020-1260  
lbs 2nd stage 1000.00-1175.00; 7  
yrs to short solid 1020-1410 lbs  
2nd stage 1000.00-1050.00 per  
head

COW-CALF PAIRS: Medium and  
Large 1-2 few short solid 1200 lbs  
with 150-200 lb calves 1010.00 per  
pair

**MISSOURI WEEKLY DIRECT WEANER AND FEEDER PIG REPORT**

Receipts: 4740 Weaner pigs steady . Feeder pigs no sales reported. Prices per head. Early weaned pigs 10 lb. base weights FOB the farm 0% negotiated, 4740 head, 10 lbs, 33.94-36.50, weighted average 35.70

WHOLESALE FEEDSTUFFS PRICES (DOLLARS PER TON-BULK BASIS)				
Area	Soybean Meal 48% Solvent	Cottonseed Meal 41% Solvent	Meat Meal	Wheat Middlings
Kansas City	281.60	230.00	220.00	76.00
St. Louis	310.50	220.00	240.00	71.00

**MISSOURI WEEKLY DIRECT SLAUGHTER CATTLE REPORT**

Weekly Receipts: 200 Week ago: 0 Year ago: 120  
Trading from last Friday through Friday morning remains light at this time as bids and asking prices are higher.

LIVE STEERS & HEIFERS: No sales  
DRESSED STEERS & HEIFERS: Late last week 1 load 210.00

GRADE AND WEIGHT (Grid):  
Thursday 4 loads 220.00

**By-Product Feed Prices**

Alfalfa Pellets, St. Louis MO 235.00; Corn Gluten Feed pelleted, Butler, MO FOB out; Distillers Grain Dried, FOB Carrollton, MO 100.00; Soy Hulls Kansas City, MO 90.00. Prices per ton.

**Springfield Livestock Marketing Center  
Special Dairy Heifer Sale Report for 05/23/2017**

Receipts: 690 Last Month Special: 738 Year Ago: 440  
Springer Heifers bred seven to nine months: Supreme 1210.00-1390.00, few crossbreds 1185.00-1285.00. Approved 975.00-1125.00. Heifers bred three to six months: Supreme 1210.00-1485.00. Approved 1000.00-1175.00, crossbreds 1000.00-1150.00. Medium 800.00-985.00. Common 575.00- 660.00. Heifers bred one to three months: Supreme 1060.00-1250.00. Approved 975.00-1075.00. Medium 800.00-975.00. Common few 300.00-685.00, ind crossbred 550.00. Open Heifers: Approved: 185-300 lbs 260.00-530.00; 300-400 lbs 310.00-570.00; 400-500 lbs 500.00-650.00, Jerseys 520.00-580.00, crossbreds 490.00-620.00; 500-600 lbs 660.00-790.00; 600-700 lbs 720.00-750.00; 700-800 lbs 850.00-1030.00, crossbreds 700.00-920.00. Replacement Cows: Fresh and Milking Cows: Approved 1100.00-1200.00. Medium 900.00-985.00. Common 480.00- 700.00. Springer Cows: Approved 1250.00-1275.00. Medium 825.00- 900.00, few crossbreds 835.00-1010.00. Bred Cows: Approved-1100.00-1275.00, few Jerseys 1100.00-1150.00. Medium 925.00-1075.00. Common 685.00-800.00. Baby Calves: Holstein heifers 160.00-260.00. Holstein bulls 140.00-190.00. Crossbred heifers 180.00-260.00. Crossbred bulls 180.00-250.00, small 110.00-125.00.

**Diamond - TS White Sheep and Goat Sale for 06/01/2017**

Receipts: 2153 Last Month: 1812 Last Year: 1288  
SHEEP: Feeder Lambs: Medium and Large 1-2 30-45 lbs 185.00-202.50. Medium and Large 2 30-39 lbs 170.00-180.00. Slaughter Wool Lambs: Choice and Prime 1-2 45-94 lbs 190.00-210.00; 100-125 lbs 150.00-145.00. Hair lambs: Choice and Prime 1-2 46-85 lbs 190.00-205.00. Good 2-3 48-95 lbs 175.00-187.50. Replacement Hair Ewes: Medium and Large 1-2 106-148 lbs 145.00-165.00. Medium and Large 2 94-169 lbs 107.00-127.50. Slaughter Wool Ewes: Utility-Good 2-3 122-192 lbs 62.50-80.00. Slaughter Hair Ewes: Good 2-3 89-172 lbs 80.00-95.00. Utility 2-3 70-172 lbs 65.00-75.00. Bottle Babies: Selection 1 85.00-90.00 Per Head. Selection 2 50.00-60.00 Per Head. Feeder kids: Selection 1 25-39 lbs 260.00-285.00. Selection 2 21-37 lbs 220.00-247.50. Selection 3 30-38 lbs 150.00-175.00. Slaughter Kids: Selection 1 42-70 lbs 275.00-297.50. Selection 2 40-75 lbs 230.00-260.00. Selection 3 41-58 lbs 170.00-190.00. Several Families with single and twin kids Selection 2 70.00-75.00 Per Head. Replacement Does: Selection 1 130.00-160.00 Per Head; 75-85 lbs 190.00-192.50. Slaughter Does: Selection 1 78-160 lbs 145.00-167.50. Selection 2 57-128 lbs 120.00-137.50. Selection 3 58-140 lbs 90.00-115.00. Slaughter Bucks: Selection 1 90-150 lbs 157.50-170.00. Selection 2 105-150 lbs 135.00-150.00. Selection 3 85-135 lbs 75.00-100.00.

**WEEKLY COMMODITY GRAIN FUTURES TRENDS**

Compared to last Friday: Soybeans .03 to .05 lower, Wheat .08 to .09 lower, Corn unch to .02 lower, Kansas City Wheat .02 to .04 lower, Soybean Meal .60 to 1.20 higher.

Daily Grain Futures Closes

	Mon.	Tues.	Wed.	Thu.	Fri.
Soybeans					
Jul	Holiday	912 3/4	916	912 1/4	921 1/4
Aug		916	918 1/4	915 1/4	923 1/4
Sep		916 1/2	917	915 1/4	923 1/4
Nov		919 3/4	918 1/4	917 3/4	925
Jan		927 3/4	926 1/4	925 1/2	932 1/2
Wheat					
Jul	Holiday	429 1/2	429 1/4	429	429 1/2
Sep		444	443 3/4	443 1/2	443 3/4
Dec		466 1/2	466 1/2	466	465
Mar		484	484	484	482 3/4
May		495 1/2	495 1/4	495 1/4	494 1/4
Corn					
Jul	Holiday	367	372	370 1/2	372 3/4
Sep		375	380	378 1/2	380 3/4
Dec		385 3/4	391	389 1/4	391
Mar		395 1/2	401	399	400 3/4
May		401 3/4	407	405	407
KC Wheat					
Jul	Holiday	433 1/4	431 3/4	403 3/4	433 1/4
Sep		451 1/4	450	449 1/4	451 1/2
Dec		476 1/2	475 1/2	474 1/2	476 3/4
Mar		491 1/2	490	489 1/4	491
May		502 1/2	501 3/4	501	503
SB Meal					
Jul	Holiday	297.60	298.10	297.50	301.90
Aug		298.90	299.40	299.10	303.50
Sep		300.30	300.60	300.40	304.60
Oct		301.40	301.40	301.50	305.50
Dec		303.40	303.00	303.20	307.20

**WEEKLY COMMODITY FUTURES TRENDS**

Compared to last week: Live Cattle 4.72 to 8.12 higher, Lean Hogs .07 to .88 higher, except .60 lower, Feeder Cattle 8.38 to 11.77 higher.

Daily Futures Closes

	Mon.	Tues.	Wed.	Thu.	Fri.
Cattle					
Jun	Holiday	122.97	124.42	127.42	130.82
Aug		119.85	121.70	124.70	126.05
Oct		116.52	118.15	121.15	121.10
Dec		117.10	118.90	121.72	121.47
Feb		117.47	118.90	121.40	121.32
Lean Hogs					
Jun	Holiday	80.50	81.92	80.92	81.22
Jul		81.00	83.02	82.12	81.97
Aug		81.00	82.17	82.00	81.70
Oct		68.00	68.42	68.87	68.70
Dec		62.22	62.57	62.92	63.05
Fdr Cat					
Aug	Holiday	149.92	152.57	157.07	158.72
Sep		149.50	151.82	156.32	157.82
Oct		148.27	150.15	154.65	155.70
Nov		146.45	148.12	152.27	152.65
Jan		140.25	141.30	145.52	145.85
Milk					
May	Holiday	15.62	15.61	17.14	16.52
Jun		16.60	16.70	16.66	16.52
Jul		17.09	17.24	17.14	16.95

**INTERIOR MISSOURI DIRECT HOGS**

Weekly Receipts: 2090 Week ago: 2016 Year ago: 1909  
Compared to last week, barrows and gilts 1.00 lower to 1.00 higher. Sows 2.00 to 6.00 lower.

BARROWS AND GILTS: Base carcass meat price 63.00-67.00. weekly top Fri 67.00  
SOWS: 300-500 lbs. 38.00-45.00  
Over 500 lbs. 43.00-49.00

**Market News Hotline**  
**1-573-522-9244**

**June 02, 2017**

**MISSOURI GRAIN WEEKLY TRENDS**

Weekly Trends: Soybeans .05 lower to .07 higher, Soft Wheat .11 lower to .08 higher, Corn .02 to .06 lower, Sorghum .02 to .03 lower.

Area	#1 Soy-beans	#2 Soft Wheat	#2 Corn	#2 Grain Sorghum
<b>Kansas City</b>				
Friday**	8.86-9.06	3.89-4.10	3.34-3.64	5.78-6.05
Monday	Holiday			
Tuesday	8.72-8.93	3.79-4.01	3.27-3.57	5.66-5.92
Wednesday	8.79-8.96	3.79-4.01	3.32-3.57	5.75-6.01
Thursday	8.72-8.92	3.79-4.01	3.30-3.55	5.73-5.98
Friday	8.93-9.06	3.97-4.01	3.32-3.58	5.76-6.03
<b>St. Louis</b>				
Friday**	9.32-9.34	4.03-4.49	3.79	5.60
Monday	Holiday			
Tuesday	9.19-9.20	3.94-4.42	3.69-3.71	5.48
Wednesday	9.23-9.24	3.94-4.41	3.75	5.57
Thursday	9.22-9.25	3.94-4.40	3.73	5.53
Friday	9.32	4.38-4.41	3.73-3.74	5.57
<b>Central</b>				
Friday**	8.86-8.92	3.88	3.39-3.42	—
Monday	Holiday			—
Tuesday	8.73-8.78	3.79-3.80	3.32-3.35	—
Wednesday	8.76-8.81	3.79	3.37-3.40	—
Thursday	8.72-8.77	3.79	3.35-3.39	—
Friday	8.81-8.86	3.79-3.80	3.37-3.41	—
<b>S.E. MO</b>				
Friday**	9.24-9.34	4.43-4.66	3.70-3.76	—
Monday	Holiday			—
Tuesday	9.13-9.20	4.42-4.57	3.68-3.69	—
Wednesday	9.18-9.24	4.43-4.49	3.60-3.73	—
Thursday	9.13-9.14	4.41-4.45	3.61-3.71	—
Friday	9.22-9.29	4.46-4.51	3.63-3.73	—

**Missouri Crop Progress and Condition Report**  
 (05/30/2017)

Cooler weather and average precipitation were prevalent across the state for the week ending May 28. Temperatures averaged 63.4 degrees, 3.4 degrees below normal. Precipitation averaged 1.36 inches statewide, just 0.25 inches above normal. There were 3.4 days suitable for fieldwork. Topsoil moisture supply was rated 1 percent short, 73 percent adequate and 26 percent surplus. Subsoil moisture supply was rated 2 percent short, 76 percent adequate and 22 percent surplus. Corn planting was 97 percent complete, 2 percentage points behind the previous year but 4 percentage points ahead of the 5-year average. Corn emerged progressed to 89 percent. Corn condition was rated 2 percent very poor, 7 percent poor, 38 percent fair, 47 percent good, and 6 percent excellent. Soybean planting was 54 percent complete. Soybean emerged progressed to 34 percent, up 14 percentage points from last week. Cotton planting was 85 percent complete. Rice planting progressed to 94 percent complete. Rice emerged progressed to 83 percent. Rice condition was 1 percent very poor, 9 percent poor, 25 percent fair, 49 percent good, and 16 percent excellent. Sorghum planting was 49 percent complete. Winter wheat condition was rated 2 percent very poor, 7 percent poor, 32 percent fair, 52 percent good, and 7 percent excellent. Pasture and range condition was rated 1 percent poor, 24 percent fair, 66 percent good, and 9 percent excellent.

(PRICES PER BU. EXCEPT GR. SORG. PER CWT)  
 \*NEW CROP \*\*PREVIOUS WEEK'S PRICES