

Weekly Market Summary

Published by:
Missouri Department of Agriculture
Ag Business Development Division
Market News Program



Chris Chinn, Director
 Ken Struempfl, Division Director
 Tony Hancock, Editor
 agmarketnews.mo.gov
<http://www.ams.usda.gov/marketnews.htm>

Eric R. Greitens, Governor

Volume XXXVII, Number 27 ♦ P.O. Box 630, Jefferson City, MO 65102 ♦ (573) 751-4211 ♦ Friday July 07, 2017

MISSOURI WEEKLY FEEDER CATTLE WEIGHTED AVERAGE REPORT (06/30/17)

Receipts: 25,716 Week ago: 31,158 Year ago: 19,014
 Steers and Heifers Medium and Large 1 Hols. Large 3

<u>Fdr. STEERS:</u>		<u>Fdr. HEIFERS:</u>		<u>Hols. STEERS</u>	
368 lbs.	181.12	359 lbs.	160.84	445 lbs.	99.05
458 lbs.	176.47	445 lbs.	154.40	574 lbs.	90.70
547 lbs.	166.67	547 lbs.	149.38	658 lbs.	85.00
646 lbs.	159.25	639 lbs.	143.90	762 lbs.	81.58
747 lbs.	151.11	737 lbs.	140.14	870 lbs.	80.80
850 lbs.	147.92	829 lbs.	135.74	940 lbs.	79.42
940 lbs.	141.87	911 lbs.	126.94		

SOUTHERN MISSOURI WEEKLY SUMMARY (West Plains, Ava) (06/30/17)

Receipts: 5845 Weeks ago: 5741 Year ago: 4830
 Compared to last week, feeder steady to 8.00 higher. Slaughter cows and Slaughter bulls steady.

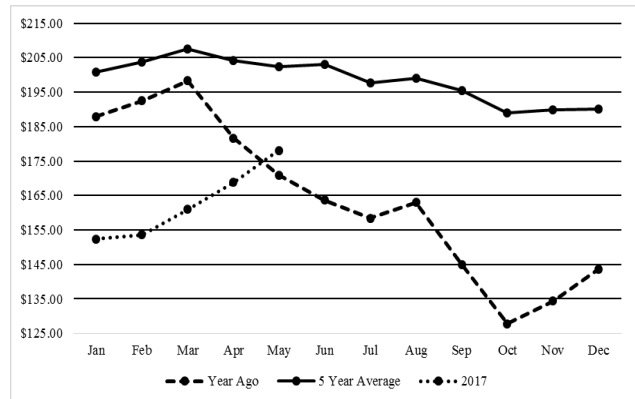
<u>STEERS:</u> Medium and Large 1		<u>HEIFERS:</u> Medium and Large 1	
350-400 lbs.	160.00-190.00	300-400 lbs.	147.50-157.50
400-500 lbs.	160.00-175.00	400-500 lbs.	144.00-162.50
500-600 lbs.	152.50-172.00	500-600 lbs.	135.00-154.00
600-700 lbs.	145.00-166.00	600-700 lbs.	128.00-150.50
700-800 lbs.	139.00-149.00	700-750 lbs.	125.00-141.25
800-900 lbs.	140.00-149.00	800-825 lbs.	122.50-134.00

<u>Holsteins:</u> Large 3	<u>SLAUGHTER COWS:</u> Breaking and Boning (70-85% lean) 65.00-76.00, high dressing 74.00-84.50, low dressing 60.00-67.00. Lean (85-90%) 61.00-69.00
450-500 lbs.	82.50-90.00

<u>SLAUGHTER BULLS:</u> Yield Grade 1-2 935-2400 lbs. 90.50-100.00, high dressing 100.00-109.00, low dressing 75.00-89.00	<u>REPLACEMENT COWS:</u> Medium and Large 1 2-5 yrs 1120-1210 lbs 2nd and 3rd stage 1500.00-1650.00. Medium and Large 1-2 2-6 yrs 1000-1500 lbs 1st to 3rd stage 900.00-1500.00 per head
--	---

COW & CALF PAIRS:
 Medium and Large 1-2 2-7 yrs 875-1300 lbs with 150-300 lb calves 1350.00-1525.00 per pair

Historical Feeder Steers Medium and Large 1 500-600 lbs. Weighted Average



*Graph is updated the first Friday of each month.

Year Ago Slaughter Steers and Heifers:

Northeast Missouri: Steers: Choice 2-3 1150-1400 lbs 117.25-118.50
 Heifers: Choice 2-3 1100-1250 lbs 117.00-117.25

East Central Missouri: Select and Choice 2-3 1200-1415 lbs 110.00-114.00. Select 1-2 106.00-109.00

SOUTHWEST MISSOURI WEEKLY SUMMARY

(Joplin and Springfield) (06/30/17)
 Feeder Cattle Receipts: 8431 Week ago: 6081 Year ago: 7062
 Cow and Bull Receipts: 1221 Week ago: 1126 Year ago: 911
 Compared to last week, feeders steady to 5.00 higher early week, feeders steady to 3.00 lower late week. Slaughter cows steady to 1.00 higher. Slaughter bulls steady to 1.00 higher early week, steady to 1.00 lower late week.

<u>STEERS:</u> Medium and Large 1		<u>HEIFERS:</u> Medium and Large 1	
300-400 lbs.	178.00-190.00	300-350 lbs.	162.00-165.00
400-500 lbs.	168.00-190.00	400-500 lbs.	136.00-158.00
500-600 lbs.	150.00-177.50	500-600 lbs.	134.00-163.00
600-700 lbs.	144.00-162.50	600-700 lbs.	133.00-147.00
700-800 lbs.	135.00-157.50	700-800 lbs.	127.00-145.00
800-900 lbs.	133.00-148.00	800-825 lbs.	129.50-139.00

<u>HOLSTEINS:</u> Large 3	<u>SLAUGHTER COWS:</u> Breaking and Boning (70-85% lean) 67.00, high dressing 71.50-83.50 Lean (85-90%) 56.00-66.50
350-400 lbs.	100.00-111.00
400-450 lbs.	108.00-112.00
550-600 lbs.	85.00-96.00
600-700 lbs.	85.00
700-800 lbs.	75.00-85.00
800-900 lbs.	70.00-87.50
900-1000 lbs.	72.00-82.00

REPLACEMENT COWS: Medium and Large 1-2 2 yrs to short solid 2nd to 3rd stage 950-1365 lbs 1075.00-1550.00, 1st stage 890-1150 lbs 1025.00-1150.00; short solid to aged 2nd to 3rd stage 1085-1370 lbs 740.00-1025.00 per head

COW & CALF PAIRS: Medium and Large 1-2 4 yrs to short solid 1065-1345 lbs with 150-300 lb calves, some rebred 1550.00-1775.00 per pair

The Weekly Market Summary is available to anyone for a \$25.00 annual subscription fee. To subscribe, send your check or money order to: Weekly Market Summary, Missouri Department of Agriculture, P.O. Box 630, Jefferson City, MO 65102.

WEST CENTRAL MISSOURI WEEKLY SUMMARY

(Sedalia, Kingsville, Butler) (06/30/17)

Receipts: 2374 Week ago: 2817 Year ago: 1190

Compared to last week, feeders steady to 5.00 higher. Slaughter cows sold firm.

FEEDER STEERS:
Medium and Large 1400-500 lbs. 167.50-183.00
500-600 lbs. 157.00-182.00
600-700 lbs. 150.00-170.00
700-800 lbs. 142.00-157.25
800-900 lbs. 145.00-147.00FEEDER HEIFERS:
Medium and Large 1400-500 lbs. 143.00-166.00
500-600 lbs. 140.00-158.00
600-700 lbs. 130.00-156.00
700-800 lbs. 135.50-148.00REPLACEMENT COWS: Medium and Large 1-2 3-7 yrs 1075-1400 lbs 2nd to 3rd stage 925.00-1050.00 per headSLAUGHTER COWS: Breaking and Boning (70-85% lean) 66.00-75.00. Lean (85-90%) 61.00-70.50COW & CALF PAIRS: ScarceSLAUGHTER BULLS: Yield Grade 1-2 1290-2570 lbs 86.50-99.00, high dressing 97.50-102.00, low dressing 76.00-87.00**EAST CENTRAL MISSOURI WEEKLY SUMMARY**

(Bowling Green, Kingdom City, Macon, Boonville) (06/30/17)

Receipts: 4271 Week ago: 3102 Year ago: 2944

Compared to last week, feeders under 600 lbs steady to 5.00 higher, over 600 lbs steady to firm, spots 4.00 higher. Slaughter cows steady to 2.00 higher.

FEEDER STEERS:
Medium and Large 1400-500 lbs. 180.00-194.25
500-600 lbs. 167.00-185.00
600-700 lbs. 158.00-172.75
700-800 lbs. 145.00-158.00
800-900 lbs. 141.50-151.00FEEDER HEIFERS:
Medium and Large 1300-400 lbs. 165.00-177.00
400-500 lbs. 158.00-171.50
500-600 lbs. 147.00-160.00
600-700 lbs. 144.00-156.25
700-800 lbs. 136.50-147.00SLAUGHTER STEERS and HEIFERS: Select and Choice 1-2 1000-1250 lbs few 120.00-122.00; Select 1-2 950-1250 lbs 105.00-115.00SLAUGHTER COWS: Breaking and Boning, (70-85% lean) Average dressing 67.00-74.50, high dressing 73.00-84.50, Lean (85-90%) 65.00-73.00REPLACEMENT COWS: ScarceSLAUGHTER BULLS: Yield Grade 1-2 1200-2550 88.50-99.00, high dressing 100.00-105.50, low dressing 77.50-86.50**NORTHEAST MISSOURI WEEKLY SUMMARY**

(Palmyra, Unionville, Green City, New Cambria)

Receipts: 4192 Week ago: 2244 Year ago: 6951

Slaughter Cattle Receipts: 34 Week ago: 43 Year ago: 58

Compared to four weeks ago, steers steady to 4.00 lower, except over 850 lbs steady to 5.00 higher. Heifers steady to 3.00 higher, spots 7.00 higher. Slaughter steers and heifers 4.00 to 5.00 lower. Slaughter prices week ending 06/30/17.

FEEDER STEERS:
Medium and Large 1424 lbs. 203.00
500-600 lbs. 175.00-194.50
600-700 lbs. 168.75-189.00
700-800 lbs. 156.50-168.00
800-900 lbs. 152.25-159.25
900-1000 lbs. 146.50-153.25FEEDER HEIFERS:
Medium and Large 1400-500 lbs. 171.50-178.00
500-600 lbs. 160.25-176.00
600-700 lbs. 150.50-166.25
700-800 lbs. 144.25-151.25SLAUGHTER STEERS: Choice 2-3 1100-1300 lbs 121.75-122.75. Select and Choice 2-3 1000-1300 lbs 118.25-119.00SLAUGHTER COWS: Breaking and Boning (75-85% lean) 67.00-77.00, high dressing ind 78.50 Lean (85-90%) 61.00-64.50SLAUGHTER HEIFERS: Choice 2-3 1000-1100 lbs 120.00-122.50. Select 1-2 1000-1100 lbs 118.00SLAUGHTER BULLS: Yield Grade 1-2 1485-2090 lbs 94.00-104.50, low dressing 89.50-93.00COW & CALF PAIRS: ScarceREPLACEMENT COWS: Scarce**SOUTHEAST MISSOURI WEEKLY SUMMARY**

(Farmington, Patton) (06/30/17)

Receipts: 1597 Week ago: 1340 Year ago: 1059

Compared to last week, feeders uneven from 2.00 lower to 6.00 higher. Slaughter cows and bulls 2.00 higher.

FEEDER STEERS:
Medium and Large 1300-400 lbs. 161.00-185.00
400-500 lbs. 149.00-179.00
500-600 lbs. 140.00-169.00
600-700 lbs. 135.00-157.00
700-800 lbs. 130.00-146.50FEEDER HEIFERS:
Medium and Large 1300-400 lbs. 142.00-172.00
400-500 lbs. 136.00-164.00
500-600 lbs. 130.00-151.50
600-700 lbs. 133.00-137.00
700-800 lbs. 121.00-136.00REPLACEMENT COWS: Medium and Large 1-2 3-7 yrs 920-1555 lbs 2nd to 3rd stage 980.00-1440.00 per headSLAUGHTER COWS: Breaking and Boning (75-85% lean) 65.00-74.50. Lean (85-90% lean) 50.00-65.50COW & CALF PAIRS: Medium and Large 1-2 3 yrs to short solid 940-1405 lbs with 130-400 lb calves 1205.00-1910.00 per pairSLAUGHTER BULLS: Yield Grade 1-2 few 1200-2040 lbs 85.50-94.50, high dressing 99.50**SOUTH CENTRAL MISSOURI WEEKLY SUMMARY**

(Cuba, Vienna) (06/30/17)

Receipts: 1124 Week ago: 3440 Year ago: 2337

Compared to last week, steers and heifers near steady. Slaughter cows steady to 3.00 higher.

FEEDER STEERS:
Medium and Large 1 and 1-2350-400 lbs. 171.00-186.00
400-500 lbs. 157.50-175.00
500-600 lbs. 150.00-165.00
600-700 lbs. 140.00-155.00
700-800 lbs. 138.00-142.75FEEDER HEIFERS:
Medium and Large 1 and 1-2300-400 lbs. 160.00-178.00
400-500 lbs. 145.00-165.00
500-600 lbs. 140.50-150.00
600-700 lbs. 140.50-149.00
Pkg 731 lbs. 133.75REPLACEMENT COWS: Medium and Large 1-2 2 yrs to short solid 825-1500 lbs 1st to 3rd stage 1000.00-1435.00 per headSLAUGHTER COWS: Breaking and Boning (70-85% lean) 64.00-73.50. Lean (85-90%) 60.00-68.00COW & CALF PAIRS: Medium and Large 1-2 2 yrs to short and solid 1050-1450 lbs some bred 250-375 lb caves 1535.00-1875.00 per pairSLAUGHTER BULLS: Yield Grade 1-2 1400-2375 lbs 90.00-98.75, high dressing 99.00-106.00**NORTHWEST MISSOURI WEEKLY SUMMARY**

(St Joseph) (06/30/17)

Receipts: 1065 Week ago: 596 Year ago: 1757

Compared to last week's light offering, feeders steady to 6.00 higher on comparable sales, spots 12.00 higher on midweight heifers. Slaughter cows steady. Slaughter bulls 2.00 to 5.00 lower.

FEEDER STEERS:
Medium and Large 1400-500 lbs. 165.00-203.00
500-600 lbs. 158.00-178.25
600-700 lbs. 152.00-169.25
700-800 lbs. 150.00-153.50
800-900 lbs. 143.00-147.00FEEDER HEIFERS:
Medium and Large 1400-500 lbs. 140.00-157.00
500-600 lbs. 142.75-160.25
600-700 lbs. 140.50-154.50
700-800 lbs. 133.50-149.75
891 lbs. 129.50SLAUGHTER BULLS: Yield grade 1-2 1220-2325 lbs 85.00-93.00, low dressing 74.00-85.00SLAUGHTER COWS: Breaking and Boning (70-85% lean) 65.00-73.50, high dressing 73.00-78.00. Lean (85-90%) 62.00-68.00BRED COWS: ScarceCOW-CALF PAIRS: Scarce

MISSOURI WEEKLY DIRECT WEANER AND FEEDER PIG REPORT

Receipts: 5957 Weaner pigs mostly steady. Feeder pigs no sales reported. Prices per head. Early weaned pigs 10 lb. base weights FOB the farm 0% negotiated, 739 head, 10 lbs, 35.89. Early weaned pigs 10 lb base weights, delivered 85% negotiated, 4957 head, 10 lbs, 23.00-33.34, weighted average 26.96.

**WHOLESALE FEEDSTUFFS PRICES
(DOLLARS PER TON-BULK BASIS)**

Area	Soybean Meal 48% Solvent	Cottonseed Meal 41% Solvent	Meat Meal	Wheat Middlings
Kansas City	305.80	250.00	267.50	85.00
St. Louis	326.50	225.00	270.00	85.00

**MISSOURI WEEKLY DIRECT
SLAUGHTER CATTLE REPORT**

Weekly Receipts: 400 Week ago: 0 Year ago: 200
Trading from last Friday through Friday morning remains inactive with declining prices producers are passing bids.

LIVE STEERS & HEIFERS: No sales
DRESSED STEERS & HEIFERS: No sales

GRADE AND WEIGHT (Grid):
6 loads 193.00; 1 load 192.00; 3 loads 189.00

By-Product Feed Prices

Alfalfa Pellets, St. Louis MO 235.00; Corn Gluten Feed pelleted, Butler, MO FOB out; Distillers Grain Dried, FOB Carrollton, MO 110.00; Soy Hulls Kansas City, MO 85.00. Prices per ton.

Norwood - Producer's Auction Yards

Special Dairy Heifer Sale Report for 06/08/2017

Receipts: 129 Last Month Special: 206 Year Ago: 298
Springer Heifers Bred Seven to Nine Months: Supreme 1325.00-1450.00, Jersey 1290.00-1500.00. Approved 1075.00-1250.00. Medium 1000.00-1025.00. Common 750.00-850.00. Heifers Bred Four to Six Months: Supreme 1250.00-1525.00. Approved 1100.00-1235.00. Medium 935.00-1050.00, Jerseys 820.00-975.00. Common 460.00-800.00. Heifers Bred One to Three Months: Supreme 1225.00-1275.00, Jerseys 1275.00-1575.00. Approved 1075.00-1125.00. Medium 850.00-900.00. Common 710.00-735.00. Open heifers: Approved 442-480 lbs Pkg 10 hd 600.00, Pair Jerseys 670.00, 769-778 lbs Pkg 6 hd 950.00, Pkg 6 hd 800 lbs 990.00. Medium 420-445 lbs 350.00-375.00, 512-560 lbs 470.00-600.00, 621-695 lbs 450.00-670.00, 845-890 lbs 790.00-900.00. Fresh Milking Heifers and Cows: Supreme 1350.00-1700.00, Jerseys 1400.00-1500.00. Approved 1200.00-1375.00. Medium 925.00-1200.00, Jerseys 850.00-900.00. Common 700.00-900.00. Bred and Springer Cows: Supreme 1375.00-1525.00, Jerseys 1425.00-1675.00. Approved 1225.00-1350.00. Medium 1075.00-1100.00, Jerseys 875.00-950.00. Common 635.00-725.00. Baby Calves: Holstein Heifers 320.00-420.00. Holstein Bulls Large 190.00-280.00. Jersey Heifers 210.00-350.00. Jersey Bulls 50.00-55.00. Crossbred Heifers 225.00-275.00. Crossbred Bulls Large 165.00-220.00. Beef Cross Heifers 225.00-280.00. Beef Cross Bulls 240.00-300.00.

Buffalo Livestock Auction Sheep and Goat Sale 06/28/2017

Receipts: 985 Last Month: 610 Last Year: 1088
SHEEP: Feeder Lambs: Medium and Large 1 2-3 20-29 lbs 235.00. Medium and Large 1-2 1-3 18-39 lbs 140.00-167.50. Medium and Large 2-3 20-33 lbs 110.00-120.00. Slaughter wool lambs: Choice 2-3 72-76 lbs 149.00-170.00. Slaughter Hair Lambs: Choice and Prime 2-3 48-75 lbs 170.00-180.00; 80-97 lbs 152.00-162.50. Good 1-3 45-78 lbs 150.00-165.00; 85-97 lbs 135.00-148.00. A few families of hair ewes with single or twin lambs. Medium and Large 1-2 175.00-210.00 Per Family. Bred Replacement Hair Ewes: Medium and Large 1-2 155.00-160.00 Per Head; 80-146 lbs 122.50-140.00. Slaughter wool Ewes: Utility-Good 1-2 115-155 lbs 70.00-74.00. Slaughter Hair Ewes: Good 2-3 65-100 lbs 100.00-112.00. Utility 1-2 59-135 lbs 57.50-72.50. Slaughter Rams: Good 2-3 91-125 lbs 120.00-130.00. Slaughter Hair Rams: Utility 1-2 140-175 lbs 77.5-85.00. Feeder Kids: Selection 1 30-35 lbs 265.00-280.00. Selection 2 25-38 lbs 174.00-180.00. Selection 3 28-35 lbs 130.00-155.00. Slaughter Kids: Selection 1 48-60 lbs 250.00-265.00; 85-105 lbs 165.00-180.00. Selection 2 40-45 lbs 200.00-215.00; 65-79 lbs 130.00-157.50. Selection 3 40-67 lbs 162.50-185.00. Slaughter Does: Selection 1 73-105 lbs 160.00-180.00. Selection 2 65-140 lbs 112.00-130.00. Selection 3 40-130 lbs 70.00-90.00. Slaughter Bucks: Selection 1 95-140 lbs 150.00-172.50. Selection 3 60-130 lbs 115.00-117.50.

WEEKLY COMMODITY GRAIN FUTURES TRENDS

Compared to last Friday: Soybeans .54 to .61 higher, Wheat .04 to .16 higher, Corn .11 to .12 higher, Kansas City Wheat .14 to .16 higher, Soybean Meal 24.10 to 26.80 higher.

Daily Grain Futures Closes

	Mon.	Tues.	Wed.	Thu.	Fri.
Soybeans					
Jul	964 3/4	Holiday	976 1/4	980 3/4	996
Aug	970		981 3/4	985 3/4	1001
Sep	973 1/2		986 1/2	990 3/4	1006 1/4
Nov	980 3/4		994 1/4	999 1/4	1015 1/2
Jan	987 1/2		1001 1/2	1006 3/4	1023 1/4
Wheat					
Jul	536 3/4	Holiday	539 1/4	519	515 1/4
Sep	555		560	539	535
Dec	574		580	561 1/4	557 3/4
Mar	587 1/2		593 1/2	578	574 1/2
May	594 1/2		598 3/4	586 3/4	582 3/4
Corn					
Jul	378	Holiday	381 3/4	380 1/4	382 1/4
Sep	388 1/2		392	390 1/2	392 1/2
Dec	399 1/4		404	402 3/4	404 3/4
Mar	408 1/4		413 1/4	412 1/4	413 3/4
May	413 1/2		418 1/4	417 1/4	418 1/4
KC Wheat					
Jul	541 1/4	Holiday	551 1/4	530 1/2	526 1/2
Sep	559 1/2		569 1/2	546 1/2	543
Dec	584 1/4		594 1/4	572 1/4	568 3/4
Mar	596 3/4		606 3/4	585 1/4	582 1/4
May	603 3/4		613 3/4	593	591
SB Meal					
Jul	311.90	Holiday	316.50	320.00	328.50
Aug	313.80		318.30	322.00	330.70
Sep	315.70		320.50	324.10	332.70
Oct	317.50		322.40	326.10	334.70
Dec	320.40		325.60	329.70	338.00

WEEKLY COMMODITY FUTURES TRENDS

Compared to last week: Live Cattle .97 to 1.53 lower, Lean Hogs .52 to 1.88 higher, except Aug .53 lower, Feeder Cattle 2.85 to 3.35 lower.

Daily Futures Closes

	Mon.	Tues.	Wed.	Thu.	Fri.
Cattle					
Aug	115.75	Holiday	113.55	114.95	114.77
Oct	114.75		112.82	113.87	113.82
Dec	115.47		113.52	114.55	114.60
Feb	116.17		114.32	115.25	115.30
Apr	115.02		113.40	114.27	114.47
Lean Hogs					
Jul	90.70	Holiday	92.05	91.47	91.72
Aug	84.40		84.57	82.65	83.22
Oct	71.55		72.12	70.72	70.97
Dec	64.55		65.45	65.25	65.35
Feb	67.87		68.62	68.72	68.87
Fdr Cat					
Aug	146.10	Holiday	142.22	144.62	145.02
Sep	146.42		142.72	144.77	145.02
Oct	145.67		142.27	143.82	143.92
Nov	144.90		141.75	143.00	142.92
Jan	141.12		138.25	139.57	139.22
Milk					
Jul	15.67	Holiday	15.68	15.72	15.60
Aug	16.47		16.54	16.66	16.48
Sep	16.67		16.74	16.88	16.79

INTERIOR MISSOURI DIRECT HOGS

Weekly Receipts: 1778 Week ago: 2063 Year ago: 2192
Compared to last week, barrows and gilts steady to 1.00 higher. Sows steady to 2.00 higher.

BARROWS AND GILTS: Base carcass meat price 81.00 weekly top Thu 82.00
SOWS: 300-500 lbs. 40.00-52.00 Over 500 lbs. 44.00-57.00

WEEKLY MARKET SUMMARY
 (USPS 597250)
 To be published weekly by the
 Missouri Department of Agriculture
 1616 Missouri Blvd.
 Jefferson City, MO 65109

Postmaster: Send address changes to:
 Missouri Department of Agriculture
 P.O. Box 630
 Jefferson City, MO 65102

Periodicals postage paid at
 Jefferson City, Missouri

Market News Hotline
1-573-522-9244

July 07, 2017

MISSOURI GRAIN WEEKLY TRENDS

Weekly Trends: Soybeans .48 to .55 higher, Soft Wheat .08 to .24 higher, Corn .08 to .12 higher, Sorghum .21 to .37 higher.

Area	#1 Soybeans	#2 Soft Wheat	#2 Corn	#2 Grain Sorghum
Kansas City				
Friday**	9.14-9.32	4.96-5.06	3.31-3.55	5.62-5.71
Monday	9.36-9.55	5.23-5.34	3.38-3.63	5.76-5.85
Tuesday	Holiday			
Wednesday	9.49-9.66	5.30-5.39	3.41-3.67	5.83-6.03
Thursday	9.53-9.70	5.18-5.24	3.40-3.65	5.80-6.00
Friday	9.69-9.86	5.14-5.20	3.42-3.67	5.83-6.03
St. Louis				
Friday**	9.51	5.30-5.31	3.73-3.74	5.55
Monday	9.65-9.74	5.58-5.60	3.79-3.81	5.85
Tuesday	Holiday			
Wednesday	9.84-9.85	5.63-5.65	3.81-3.82	5.91
Thursday	9.85-9.88	5.43-5.44	3.79-3.80	5.89
Friday	9.99-10.00	5.38-5.40	3.81-3.82	5.92
Central				
Friday**	9.07-9.12	4.96-5.06	3.36-3.41	—
Monday	9.30-9.35	5.25-5.35	3.40-3.49	—
Tuesday	Holiday			—
Wednesday	9.42-9.47	5.30-5.40	3.47-3.52	—
Thursday	9.46-9.51	5.09-5.19	3.45-3.51	—
Friday	9.61-9.66	5.05-5.15	3.47-3.53	—
S.E. MO				
Friday**	9.45-9.51	5.28-5.32	3.65-3.70	—
Monday	9.66-9.70	5.51	3.72-3.79	—
Tuesday	Holiday			—
Wednesday	9.78-9.83	5.56-5.84	3.72-3.77	—
Thursday	9.77-9.87	5.35-5.39	3.70-3.72	—
Friday	9.92-9.99	5.31-5.42	3.73-3.80	—

Missouri Crop Progress and Condition Report
 (07/05/2017)

Winter wheat harvesting continued through the week, nearing completion with 91 percent harvested, 16 percentage points ahead of the 5-year average. Temperatures averaged 72.3 degrees, 3.5 degrees below normal. Precipitation averaged 1.70 inches statewide, 0.83 inches above normal. There were 4.1 days suitable for fieldwork for the week ending July 2. Topsoil moisture supply was rated 2 percent very short, 10 percent short, 78 percent adequate, and 10 percent surplus. Subsoil moisture supply was rated 2 percent very short, 9 percent short, 82 percent adequate, and 7 percent surplus. Corn silking progressed to 25 percent, up 19 points from last week. Corn condition was rated 2 percent very poor, 5 percent poor, 26 percent fair, 56 percent good, and 11 percent excellent. Soybeans emerged progressed to 94 percent and soybean blooming is at 12 percent. Soybean condition was rated 2 percent very poor, 5 percent poor, 31 percent fair, 54 percent good, and 8 percent excellent. Cotton squaring reached 55 percent. Cotton condition was rated 12 percent poor, 39 percent fair, 43 percent good, and 6 percent excellent. Rice condition was rated 4 percent poor, 27 percent fair, 44 percent good, and 25 percent excellent. Pasture and range condition was rated 2 percent poor, 29 percent fair, 62 percent good, and 7 percent excellent.

(PRICES PER BU. EXCEPT GR. SORG. PER CWT)
 *NEW CROP **PREVIOUS WEEK'S PRICES