

Weekly Market Summary

Published by:
Missouri Department of Agriculture
Ag Business Development Division
Market News Program



Chris Chinn, Director
 Davin Althoff, Division Director
 Tony Hancock, Editor
 agmarketnews.mo.gov
 http://www.ams.usda.gov/

Eric R. Greitens, Governor

Volume XXXVIII, Number 2 ♦ P.O. Box 630, Jefferson City, MO 65102 ♦ (573) 751-4211 ♦ Friday January 12, 2018

MISSOURI WEEKLY FEEDER CATTLE WEIGHTED AVERAGE REPORT

Receipts: 51,603 Week ago: 29,047 Year ago: 47,490
 Steers and Heifers Medium and Large 1 Hols. Large 3

Fdr. STEERS:		Fdr. HEIFERS:		Hols. STEERS	
369 lbs.	195.68	367 lbs.	163.33	456 lbs.	85.18
459 lbs.	186.23	457 lbs.	153.35	656 lbs.	82.78
554 lbs.	170.24	555 lbs.	147.60	734 lbs.	78.29
648 lbs.	157.79	653 lbs.	141.55	1061 lbs.	93.00
747 lbs.	149.14	737 lbs.	135.96		
842 lbs.	144.28	846 lbs.	131.71		
931 lbs.	136.92	913 lbs.	126.53		

SOUTHERN MISSOURI WEEKLY SUMMARY (West Plains, Ava)

Receipts: 11,107 Week ago: 3286 Year ago: 9266
 Compared to last week, feeders 3.00 to 10.00 lower. Slaughter cows and bulls steady.

STEERS: Medium and Large 1		HEIFERS: Medium and Large 1	
300-400 lbs.	187.00-201.00	300-400 lbs.	163.00-171.00
400-500 lbs.	172.50-197.00	400-500 lbs.	141.00-163.00
500-600 lbs.	155.00-180.00	500-600 lbs.	132.50-155.00
600-700 lbs.	147.50-164.00	600-700 lbs.	133.50-139.00
700-800 lbs.	142.00-147.00	700-800 lbs.	
Pkg 823 lbs.	138.50		

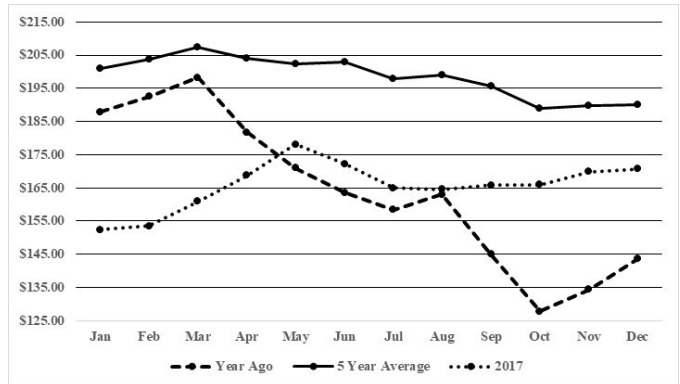
Holsteins: Large 3	SLAUGHTER COWS: Breaking and Boning (70-85% lean) 51.00-58.00, high dressing 56.00-66.00, low dressing 40.00-53.00. Lean (85-90%) 44.00-54.00
Scarce	Scarce

SLAUGHTER BULLS: Yield Grade 1-2 1048-2480 lbs. 69.00-87.00, high dressing 86.00-94.00, low dressing 54.00-77.00	REPLACEMENT COWS: Medium and Large 1-2 2-6 yrs 995-1415 lbs 2nd to 3rd stage 975.00-1375.00; 7 yrs to short solid 1295-1570 lbs 2nd to 3rd stage 860.00-1050.00.

COW & CALF PAIRS:
 Medium and Large 1-2 3-7 yrs 1070-1400 lbs with 150-300 lb calves 1190.00-1400.00; short solid to broken mouth 1190-1225 lbs with 150-200 lb calves 975.00-1000.00 per pair

The Weekly Market Summary is available to anyone for a \$25.00 annual subscription fee. To subscribe, send your check or money order to: Weekly Market Summary, Missouri Department of Agriculture, P.O. Box 630, Jefferson City, MO 65102.

Historical Feeder Steers Medium and Large 1 500-600 lbs. Weighted Average



*Graph is updated the first Friday of each month.

Year Ago Slaughter Steers and Heifers:

Northeast Missouri: Steers: Choice 2-3 1200-1450 lbs 117.00-118.75
 Heifers: Choice 2-3 1200-1400 lbs 117.50-119.25

East Central Missouri: Steers and Heifers: High Choice 2-3 1150-1280 lbs 120.00-121.25. Select and Choice 2-3 1050-1450 lbs 108.00-

SOUTHWEST MISSOURI WEEKLY SUMMARY

(Joplin and Springfield)

Feeder Cattle Receipts: 11,653 Week ago: 13,271 Year ago: 10,630
 Cow and Bull Receipts: 1140 Week ago: 537 Year ago: 1278
 Compared to last week, feeders steady to 5.00 lower, spots 8.00 lower. Slaughter cows steady to 3.00 lower. Slaughter bulls steady to 2.00 lower.

STEERS: Medium and Large 1		HEIFERS: Medium and Large 1	
350-400 lbs.	189.00-217.50	350-400 lbs.	158.00-168.00
400-500 lbs.	170.00-206.00	400-500 lbs.	148.00-165.00
500-600 lbs.	158.00-188.00	500-600 lbs.	135.00-154.50
600-700 lbs.	140.00-167.00	600-700 lbs.	132.00-147.00
700-800 lbs.	138.50-157.00	700-800 lbs.	127.00-142.00
800-900 lbs.	132.00-148.00	900-950 lbs.	127.00-129.00

HOLSTEINS: Large 3	SLAUGHTER COWS: Breaking and Boning (70-85% lean) 50.00-57.00, high dressing 56.00-61.50. Lean (85-90%) 42.00-50.00
400-500 lbs.	80.00-92.00
Pkg 590 lbs.	80.00
600-700 lbs.	80.00-88.50
Pkg 745 lbs.	80.00
Load 1061 lbs.	93.00

REPLACEMENT COWS: Medium and Large 1 2-5 yrs 1275-1365 lbs 2nd to 3rd stage 1400.00-1550.00. Medium and Large 1-2 2-7 yrs 1075-1385 lbs 2nd to 3rd stage 950.00-1375.00 per head

COW & CALF PAIRS: Medium and Large 1-2 pkg 2-3 yrs 1100 lbs with babies to 260 lb calves 1210.00; short solid 1185 lbs with 160 lb calf 1100.00 per pair

WEST CENTRAL MISSOURI WEEKLY SUMMARY

(Sedalia, Kingsville, Butler)

Receipts: 5159 Week ago: 3414 Year ago: 5908

Compared to last week, feeders sold 2.00 to 12.00 lower. Slaughter cows 2.00 to 3.00 lower.

FEEDER STEERS:
Medium and Large 1400-500 lbs. 174.00-197.50
500-600 lbs. 152.00-184.00
600-700 lbs. 149.00-167.00
700-800 lbs. 138.50-157.35
800-900 lbs. 141.60-149.75FEEDER HEIFERS:
Medium and Large 1400-500 lbs. 146.00-168.00
500-600 lbs. 137.00-154.00
600-700 lbs. 135.00-149.00
700-800 lbs. 125.50-144.25
800-900 lbs. 126.00-133.10REPLACEMENT COWS: Medium and Large 1-2 6 yrs to short solid 1195-1515 lbs 2nd to 3rd stage 1035.00-1335.00 per headSLAUGHTER COWS: Breaking and Boning (70-85% lean) 51.00-61.50. Lean (85-90%) 47.00-56.00COW & CALF PAIRS: ScarceSLAUGHTER BULLS: Yield Grade 1-2 1520-2115 lbs 76.00-82.50, high dressing 84.00-86.00, low dressing 63.00**EAST CENTRAL MISSOURI WEEKLY SUMMARY**

(Bowling Green, Kingdom City, Macon, Boonville)

Receipts: 6781 Week ago: 993 Year ago: 6625

Compared to last week, feeder calves under 550 lbs steady undertone, over 550 lbs mostly 4.00 to 10.00 lower. Slaughter cows steady to

FEEDER STEERS:
Medium and Large 1300-400 lbs. 191.00-210.00
400-500 lbs. 186.00-200.00
500-600 lbs. 166.00-188.00
600-700 lbs. 154.00-169.00
700-800 lbs. 144.25-160.00
800-900 lbs. 143.50-154.25FEEDER HEIFERS:
Medium and Large 1300-400 lbs. 157.00-173.00
400-500 lbs. 155.00-167.00
500-600 lbs. 150.00-160.75
600-700 lbs. 143.00-152.00
700-800 lbs. 136.50-154.25SLAUGHTER STEERS and HEIFERS: Select and Choice 2-4 1250-1500 lbs 119.00-125.50. Select 1-2 105.00-116.00SLAUGHTER COWS: Breaking and Boning, (70-85% lean) Average dressing 55.00-59.50; high dressing 59.50-67.25. Lean (85-90%) 52.00-59.00BRED HEIFERS: ScarceSLAUGHTER BULLS: Yield Grade 1-2 1200-2500 lbs 78.50-86.00, high dressing 88.50-90.00; low dressing 72.50-76.00**NORTHEAST MISSOURI WEEKLY SUMMARY**

(Palmyra, Unionville, Green City, New Cambria)

Receipts: 6902 Week ago: 6156 Year ago: 5819

Slaughter Cattle Receipts: 20 3 Weeks ago: 20 Year ago: 39

Compared to last week, steers and heifers 5.00 to 10.00 lower. Slaughter cows steady to 1.00 higher. Slaughter steers and heifers 2.00 to 3.00 higher.

FEEDER STEERS:
Medium and Large 1400-500 lbs. 180.50-205.00
500-600 lbs. 163.00-185.00
600-700 lbs. 150.00-169.50
700-800 lbs. 143.00-163.00
800-900 lbs. 135.75-147.60
Pkg 910 lbs. 133.25FEEDER HEIFERS:
Medium and Large 1300-400 lbs. 164.00-178.00
400-500 lbs. 150.00-165.50
500-600 lbs. 145.50-164.00
600-700 lbs. 137.50-147.00
700-800 lbs. 130.75-140.35SLAUGHTER STEERS: Pkg Choice 2-3 1335 lbs 1220.75SLAUGHTER COWS: Breaking and Boning (75-85% lean) 52.50-61.50, high dressing 65.50-69.00. Lean (85-90%) 47.50-56.50SLAUGHTER HEIFERS: Choice 2-3 1300-1525 lbs 119.50-121.25SLAUGHTER BULLS: Yield Grade 1-2 1300-2185 lbs 75.50-88.50REPLACEMENT COWS: ScarceCOW & CALF PAIRS: Scarce**SOUTHEAST MISSOURI WEEKLY SUMMARY**

(Farmington, Patton)

Receipts: 2623 Week ago: 449 Year ago: 2128

Compared to last week, feeders traded uneven from 6.00 lower to 4.00 higher. Slaughter cows 2.00 higher. Slaughter bulls 2.00 lower.

FEEDER STEERS:
Medium and Large 1300-400 lbs. 158.00-197.00
400-500 lbs. 160.00-187.00
500-600 lbs. 150.00-174.00
600-700 lbs. 135.50-169.00
700-800 lbs. 132.00-145.50FEEDER HEIFERS:
Medium and Large 1300-400 lbs. 145.00-166.00
400-500 lbs. 135.00-160.00
500-600 lbs. 135.00-148.00
600-700 lbs. 125.00-142.50
700-800 lbs. 125.00-135.50REPLACEMENT COWS: Medium and Large 1-2 3 yrs to short solid 875-1515 lbs 2nd to 3rd stage 670.00-1150.00 per headSLAUGHTER COWS: Breaking and Boning (75-85% lean) 45.50-56.50. Lean (85-90% lean) 35.00-45.50COW & CALF PAIRS: ScarceSLAUGHTER BULLS: Yield Grade 1-2 few 1150-2220 lbs 65.50-72.50, high dressing 77.50-85.50**SOUTH CENTRAL MISSOURI WEEKLY SUMMARY**

(Cuba, Vienna)

Receipts: 3220 Week ago: 0 Year ago: 2927

Compared to three weeks ago, steers and heifers steady to 3.00 lower. Slaughter cows steady to 1.00 higher.

FEEDER STEERS:
Medium and Large 1300-400 lbs. 176.00-203.00
400-500 lbs. 160.00-207.00
500-600 lbs. 154.00-188.00
600-700 lbs. 142.50-171.25
700-800 lbs. 138.00-152.00FEEDER HEIFERS:
Medium and Large 1350-400 lbs. 157.00-164.00
400-500 lbs. 144.50-156.50
500-600 lbs. 137.00-152.50
600-700 lbs. 132.00-147.75
Lot 795 lbs. 126.00REPLACEMENT COWS: Medium and Large 1-2 3-6 yrs 1150-1500 lbs 2nd to 3rd stage 1010.00-1375.00 per headSLAUGHTER COWS: Breaking and Boning (70-85% lean) 52.00-59.00. Lean (85-90%) 47.00-56.00COW & CALF PAIRS: Medium and Large 1-2 pkg 5 yrs 1100-1150 lbs with baby to 175 lb calves 1225.00 per pairSLAUGHTER BULLS: Yield Grade 1-2 1350-2250 lbs 78.00-87.00, high dressing ind 90.00, low dressing 68.00-79.00**NORTHWEST MISSOURI WEEKLY SUMMARY**

(St Joseph)

Receipts: 2044 Two Weeks ago: 2240 Year ago: 2892

Compared to last week, steers 5.00 to 10.00 lower, spots 12.00 lower. Heifers mostly 3.00 to 6.00 lower. Compared to three weeks ago, slaughter cows mostly steady. Slaughter bulls firm to 4.00 higher.

FEEDER STEERS:
Medium and Large 1400-500 lbs. 176.00-189.50
500-600 lbs. 158.50-183.00
600-700 lbs. 150.00-166.00
700-800 lbs. 140.00-157.50
800-900 lbs. 127.75-139.00
900-1000 lbs. 121.50-128.75FEEDER HEIFERS:
Medium and Large 1300-400 lbs. 170.00-171.00
400-500 lbs. 150.00-162.00
500-600 lbs. 138.00-159.25
600-700 lbs. 136.00-149.25
700-800 lbs. 128.00-142.75SLAUGHTER BULLS: Yield Grade 1-2 1195-2055 lbs 70.00-83.50, low dressing 68.00SLAUGHTER COWS: Breaking and Boning (70-85% lean) 50.00-61.00. Lean (85-90%) 39.00-53.00BRED COWS: Medium and Large 1 2-4 yrs 2nd to 3rd stage 1174-1375 lbs 1150.00-1850.00; 2-8 yrs 1163-1441 lbs 2nd to 3rd stage 1210.00-2025.00 per headCOW-CALF PAIRS: Medium and Large 1 2-4 yrs 1100 lbs with 150-300 lb calf 1950.00; 5-8 yrs 1200-1425 lbs with 150-300 lb calves 1425.00-1650.00 per pair

MISSOURI WEEKLY DIRECT WEANER AND FEEDER PIG REPORT

Receipts: 4678 Weaner pigs sold steady to firm. Feeder pigs no recent sales reported. Prices per head. Early weaned pigs 10 lb. base weights FOB the farm 0% negotiated, 3861 head, 10 lbs, 36.00-46.00, weighted average 42.45. Early weaned pigs 10 lb base weights, delivered 0% negotiated, 817 head, 10 lbs, 49.80

**WHOLESALE FEEDSTUFFS PRICES
(DOLLARS PER TON-BULK BASIS)**

Area	Soybean Meal 48% Solvent	Cottonseed Meal 41% Solvent	Meat Meal	Wheat Middlings
Kansas City	291.20	267.50	225.00	167.50
St. Louis	318.00	280.00	220.00	146.00

MISSOURI WEEKLY DIRECT

Weekly Receipts: 0 Week ago: 600 Year ago: 80
Trading from late last Friday remains inactive as producers are passing lower bids this week.

LIVE STEERS & HEIFERS: No Sales Reported
DRESSED STEERS & HEIFERS: No Sales Reported

GRADE AND WEIGHT (Grid): No Sales Reported

By-Product Feed Prices

Alfalfa Pellets, St. Louis MO 235.00; Corn Gluten Feed pelleted, South MO FOB 154.00-161.00; Distillers Grain Dried, FOB Carroll-

**Springfield Livestock Marketing Center
Special Dairy Heifer Sale Report for 01/11/2018**

Receipts: 352 Last Month Special: 772 Year Ago: 593

Springer Heifers Bred Seven to Nine Months: Approved Ind 1125.00. Medium 910.00-925.00, Ind Jersey 950.00. Common Ind 725.00, Crossbred 800.00-825.00; Ind Jersey 800.00. Heifers Bred Four to Six Months: Common 700.00-750.00, Crossbred 430.00-770.00, Jersey 250.00-380.00. Heifers Bred One to Three Months: Approved Ind Jersey 900.00. Medium Ind Crossbred 625.00. Open heifers: Approved 300-400 lbs Pair 280.00, Pkg 4 Jersey 430.00; 600-700 lbs Pair Crossbred 590.00. Medium 200-300 lbs Individual Crossbred 210.00, Pkg 4 hd Jersey 240.00; 300-400 lbs Crossbred 210.00-275.00; 400-500 lbs Crossbred 250.00-285.00, Pair Jersey 275.00; 600-700 lbs Crossbred 390.00-410.00; 700-800 lbs Pkg 4 hd 650.00. Fresh Milking Heifers and Cows: Medium 850.00-875.00. Common Ind 600.00, Crossbred 350.00-650.00. Bred and Springer Cows: Common 425.00-650.00, Crossbred 425.00-450.00, Jerseys 420.00-650.00. Baby Calves: Holstein Heifers 50.00-100.00. Holstein Bulls Large 80.00-125.00, Small 30.00-60.00. Jersey Heifers Large Pair 100.00, Small Individual 45.00. Jersey Bulls 10.00-30.00. Crossbred Heifers 60.00-75.00. Crossbred Bulls 25.00-85.00. Beef Cross Heifers Large 100.00-170.00, Small Individual 65.00. Beef Cross Bulls 95.00-150.00

**Diamond – TS Whites Sheep and Goat Sale
Thursday Sheep and Goat Auction for 01/04/18**

Receipts: 561 Last Month: 684 Last Year: 1598

SHEEP: Feeder Lambs, mostly hair: Medium and Large 1-2 38-55 lbs 240.00-262.50. Medium and large 2-3 39-55 lbs 220.00-235.00. Slaughter Lambs, mostly hair: Choice and Prime 2-4 60-70 lbs 235.00-255.00; 73-84 lbs 200.00-225.00; 88-99 lbs 165.00-195.00; 103-110 lbs 145.00-170.00; 122-125 lbs 120.00-130.00. Choice 2-3 63-65 lbs 205.00-225.00. Several Families of wool Ewes with lambs: Small Medium 2-3 57.50 Per Head. Replacement Ewes Few: several Fancy young Cheviots 71 lbs 230.00. Medium and Large 1-2 125-128 lbs 105.00-112.50. Slaughter Ewes: Utility and Good 1-3 80-185 lbs 67.50-87.50. Replacement Hair Rams: One young Dorper 120 lbs 140.00. Slaughter Rams. 160-185 lbs 70.00-100.00. GOATS: Feeder kids: Selection 2 32-40 lbs 225.00-245.00. Slaughter Kids: Selection 1 40-77 lbs 252.50-270.00; 90-120 lbs 170.00-180.00. Selection 2 42-73 lbs 220.00-250.00; 75-98 lbs 160.00-190.00. Selection 3 45-52 lbs 150.00-190.00. Replacement Does: Selection 1-2 70-88 lbs 160.00-170.00; 90-140 lbs 125.00-155.00. Slaughter Does: Selection 2-3 70-85 lbs 140.00-165.00. Replacement Bucks: Selection 1 210 lbs 350.00 Per Head. Slaughter Bucks: Selection 2 90-165 lbs 100.00-140.00.

WEEKLY COMMODITY GRAIN FUTURES TRENDS

Compared to last Friday: Soybeans .08 to .17 lower, Wheat .08 to .10 lower, Corn .04 to .05 lower, Kansas City Wheat .10 to .12 lower, Soybean Meal 3.10 to 8.10 lower.

Daily Grain Futures Closes

	Mon.	Tues.	Wed.	Thu.	Fri.
Soybeans					
Jan	958 1/4	955 3/4	947	940 1/2	944
Mar	966 3/4	963 3/4	955	950	960 1/2
May	977 1/2	974 1/2	966	961	972
Jul	987 1/4	983 3/4	975 1/4	970 1/2	981 1/4
Aug	990	986 1/2	978 1/4	973 1/2	983 3/4
Wheat					
Mar	427 3/4	432 1/4	434 1/4	433 1/4	420 1/2
May	440 1/2	445 1/4	447 3/4	446 3/4	434 1/4
Jul	453	457 1/2	460 1/2	458 3/4	446 1/2
Sep	466 1/2	471 1/4	474 1/4	471 3/4	460 1/2
Dec	484 1/2	489 1/4	492 1/2	489 1/2	479 1/4
Corn					
Mar	347 1/4	349	349	348 3/4	346 1/4
May	355 1/2	357 1/4	357	357	354 3/4
Jul	363 3/4	365 1/2	365	365	362 3/4
Sep	371 3/4	373 1/2	373	373	370 3/4
Dec	381	382 1/2	382 3/4	382 3/4	380 1/2
KC Wheat					
Mar	433 1/4	439	440 1/2	440 1/4	426 1/4
May	447	452 1/2	454	453 3/4	439 3/4
Jul	462 1/2	468	469 1/2	469 1/4	455 1/4
Sep	478 1/4	484	485 3/4	485	471 1/4
Dec	498 1/4	504	505 3/4	505 1/2	492 1/4
SB Meal					
Jan	317.50	314.50	312.90	309.60	309.80
Mar	321.50	318.20	316.40	313.10	317.00
May	324.10	321.10	319.40	316.70	320.80
Jul	326.80	323.80	321.90	319.60	323.60
Aug	326.90	324.10	322.10	320.20	324.30

WEEKLY COMMODITY FUTURES TRENDS

Compared to last week: Live Cattle .35 to 1.88 lower, Lean Hogs Feb .15 higher others 1.13 to 1.75 lower, Feeder Cattle Jan 2.27 lower others .45 to .68 higher except Aug .05 lower.
Daily Futures Closes

	Mon.	Tues.	Wed.	Thu.	Fri.
Cattle					
Feb	117.22	117.67	116.87	117.07	117.37
Apr	119.30	119.52	118.67	118.87	119.45
Jun	111.20	111.67	110.77	111.00	111.62
Aug	108.50	109.07	108.35	108.57	109.05
Oct	110.12	110.62	110.07	110.12	110.37
Lean Hogs					
Feb	72.97	73.17	72.52	70.97	71.57
Apr	76.80	76.77	75.77	73.82	74.32
May	80.95	80.95	80.25	78.70	79.00
Jun	85.50	85.40	85.55	83.67	83.80
Jul	85.07	85.12	85.22	83.47	83.30
Fdr Cat					
Jan	146.45	145.47	144.37	143.82	144.35
Mar	141.92	142.75	142.22	141.37	142.65
Apr	142.02	142.67	142.35	141.85	143.00
May	141.80	142.35	142.05	141.92	142.70
Aug	145.22	145.80	144.95	145.02	145.75
Milk					
Jan	13.85	13.80	13.78	13.83	13.75
Feb	13.24	13.18	13.13	13.23	13.07
Mar	13.31	13.19	13.18	13.26	13.16

INTERIOR MISSOURI DIRECT HOGS

Weekly Receipts: 1480 Week ago: 1416 Year ago: 2897
Compared to last week, barrows and gilts 6.00 to 12.00 higher. Sows steady to 2.00 higher.

BARROWS AND GILTS: Base carcass meat price 60.00. Weekly top Fri 60.00
SOWS: 300-500 lbs. 26.00-32.00 Over 500 lbs. 30.00-36.00

WEEKLY MARKET SUMMARY
 (USPS 597250)
 To be published weekly by the
 Missouri Department of Agriculture
 1616 Missouri Blvd.
 Jefferson City, MO 65109

Postmaster: Send address changes to:
 Missouri Department of Agriculture
 P.O. Box 630
 Jefferson City, MO 65102

Periodicals postage paid at
 Jefferson City, Missouri

Market News Hotline
1-573-522-9244

January 12, 2018

MISSOURI GRAIN WEEKLY TRENDS

Weekly Trends: Soybeans .12 lower to .02 higher, Wheat .10 to .12 lower, Corn .06 lower to .03 higher, Sorghum .08 to .09 lower.

Area	#1 Soy-beans	#2 Soft Wheat	#2 Corn	#2 Grain Sorghum
Kansas City				
Friday**	9.22-9.25	3.66-3.86	3.26-3.39	6.08
Monday	9.21-9.30	3.63-3.83	3.22-3.35	6.01
Tuesday	9.19-9.27	3.67-3.87	3.24-3.37	6.05
Wednesday	9.10-9.21	3.69-3.89	3.24-3.37	6.05
Thursday	9.10-9.16	3.68-3.88	3.24-3.37	6.05
Friday	9.20-9.27	3.56-3.75	3.21-3.33	6.00
St. Louis				
Friday**	9.75	4.30-4.42	3.53-3.55	6.17
Monday	9.67-9.70	4.27-4.39	3.49	6.10
Tuesday	9.65-9.66	4.32-4.44	3.53-3.55	6.14
Wednesday	9.58	4.34-4.46	3.56-3.57	6.14
Thursday	9.52-9.53	4.33-4.45	3.56-3.58	6.12
Friday	9.63	4.20-4.30	3.56-3.57	6.08
Central				
Friday**	9.10-9.11	3.50-3.51	3.16-3.21	—
Monday	9.06-9.07	3.47-3.48	3.12-3.17	—
Tuesday	9.03-9.04	3.52	3.14-3.19	—
Wednesday	8.95	3.54	3.14-3.19	—
Thursday	8.90	3.53	3.14-3.19	—
Friday	9.00-9.01	3.40-3.41	3.11-3.16	—
S.E. MO				
Friday**	9.70-9.78	4.30	3.55-3.61	—
Monday	9.60-9.74	4.27-4.54	3.48-3.56	—
Tuesday	9.52-9.69	4.31	3.50-3.58	—
Wednesday	9.47-9.63	4.33	3.52-3.61	—
Thursday	9.42-9.58	4.32	3.52-3.62	—
Friday	9.68-9.73	—	3.59	—

(PRICES PER BU. EXCEPT GR. SORG. PER CWT)
 *NEW CROP **PREVIOUS WEEK'S PRICES

Missouri Weekly Hay Summary - Week ending 01/12/2018

Quite the roller coaster of weather over the last week. As a break in the freezing weather took place on Tuesday and Wednesday, with many areas seeing the mercury climb above 60 degrees, only to plummet on Thursday back to below freezing. Some winter precipitation made travel a bit sketchy but most just glad to see some moisture finally arriving. Interest in hay has picked up a slightly with the cold temperatures the last few weeks. The best interest is for better quality hay coming from horse owners and prices have crept up ever so slightly as that type of hay become less abundant. Hay supplies are moderate, demand is light to moderate and prices are steady to firm. The Missouri Department of Agriculture has a hay directory available for both buyers and sellers. To be listed, or for a directory visit <http://mda.mo.gov/abd/haydirectory/> for listings of hay <http://agebb.missouri.edu/haylst/> (All prices f.o.b. and per ton unless specified and on most recent reported sales price listed as round bales based generally on 5x6 bales with weights of approximately 1200-1500 lbs).

Supreme quality Alfalfa (RFV <185) 180.00-250.00

Small squares 6.50-8.00 per bale

Premium quality Alfalfa (RFV 170-180) 160.00-200.00

Good quality Alfalfa (RFV 150-170) 120.00-160.00

small squares 4.50-5.00 per bale

Fair quality Alfalfa (RFV 130-150) 100.00-120.00

Good quality Mixed Grass hay 75.00-100.00

Small squares 4.00-6.00 per bale (some alfalfa/grass mix)

Fair to Good quality Mixed Grass hay 50.00-80.00

small squares 3.00-5.00 per bale

Fair quality Mixed Grass hay 20.00-35.00 per large round bale

Good quality Bromegrass 100.00-150.00

Fair to Good quality Bromegrass 50.00-80.00