

Weekly Market Summary

Published by:
Missouri Department of Agriculture
Ag Business Development Division
Market News Program



Chris Chinn, Director
 Davin Althoff, Division Director
 Tony Hancock, Editor
 agmarketnews.mo.gov
<http://www.ams.usda.gov/marketnews.htm>

Michael L. Parson, Governor

Volume XXXVIII, Number 28 ♦ P.O. Box 630, Jefferson City, MO 65102 ♦ (573) 751-4211 ♦ Friday July 13, 2018

MISSOURI WEEKLY FEEDER CATTLE WEIGHTED AVERAGE REPORT

Receipts: 32,916 Two Weeks ago: 29,773 Year ago: 22,661
 Steers and Heifers Medium and Large 1 Hols. Large 3

Fdr. STEERS:		Fdr. HEIFERS:		Hols. STEERS	
353 lbs.	181.57	358 lbs.	154.15	377 lbs.	73.23
458 lbs.	172.03	457 lbs.	151.47	453 lbs.	72.45
551 lbs.	166.61	547 lbs.	147.99	552 lbs.	73.58
648 lbs.	160.32	641 lbs.	146.19	634 lbs.	73.80
744 lbs.	153.28	734 lbs.	141.48	756 lbs.	79.85
843 lbs.	147.05	822 lbs.	131.01	827 lbs.	86.56
922 lbs.	137.83			934 lbs.	74.20

SOUTHERN MISSOURI WEEKLY SUMMARY (West Plains, Ava)

Receipts: 7379 Two Weeks Ago: 8407 Year ago: 5258
 Compared to two weeks ago, feeders steady to 5.00 higher, spots 12.00 higher on calves early week. Early week slaughter cows and bulls steady to firm. Late week, slaughter cows steady to 3.00 lower and slaughter bulls steady.

STEERS:		HEIFERS:	
Medium and Large 1		Medium and Large 1	
350-400 lbs.	170.00-178.00	350-400 lbs.	152.50-169.00
400-500 lbs.	164.00-176.00	400-500 lbs.	145.00-162.00
500-600 lbs.	156.00-169.00	500-600 lbs.	138.00-154.00
600-700 lbs.	145.00-171.00	600-700 lbs.	139.00-149.00
700-800 lbs.	145.00-154.00	700-800 lbs.	138.00-140.00
800-900 lbs.	141.50-148.50		
900-1000 lbs.	131.00-136.50		

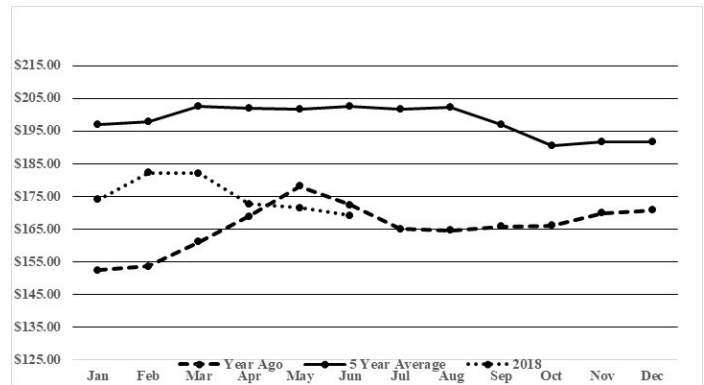
Holsteins:		SLAUGHTER COWS:	
Large 3		Breaking and Boning (70-85% lean) 50.00-61.00, high dressing 56.50-64.50, low dressing 49.50-55.00. Lean (85-90%) 47.00-56.00	
pkg 752 lbs.	72.00		
Lot 730 lbs.	77.00		

SLAUGHTER BULLS:		REPLACEMENT COWS:	
Yield Grade 1-2 1205-2410 lbs 79.00-87.00 lbs. high dressing 84.50-95.00; low dressing 72.00-82.00		Medium and Large 1-2 2-6 yrs 985-1415 lbs 2nd to 3rd stage 850.00-1175.00; pkg 6-7 yrs 1230 lbs 3rd stage 825.00; 7 yrs to short solid mouth 1075-1449 lbs 2nd to 3rd stage 750.00-900.00 per head	

COW & CALF PAIRS:	
Medium and Large 1-2 2-5 yrs 1050-1375 lbs with 125-300 lb calves 1175.00-1375.00; pkg 6 yrs 1050 lbs with 320 lb calves 1125.00 per pair	

The Weekly Market Summary is available to anyone for a \$25.00 annual subscription fee. To subscribe, send your check or money order to: Weekly Market Summary, Missouri Department of Agriculture, P.O. Box 630, Jefferson City, MO 65102.

Historical Feeder Steers Medium and Large 1 500-600 lbs. Weighted Average



*Graph is updated the first Friday of each month.

Year Ago Slaughter Steers and Heifers:
 Northeast Missouri: Steers: Choice 2-3 1100-1300 lbs 121.75-122.75. Select and Choice 2-3 1000-1300 lbs 118.25-119.00
 Heifers: Choice 2-3 1000-1100 lbs 120.00-122.50. Select 1-2 1000-1100 lbs 118.00
 East Central Missouri: Select and Choice 1-2 1100-1550 lbs 115.50-120.50. Select 1-2 950-1450 lbs 108.00-114.00

SOUTHWEST MISSOURI WEEKLY SUMMARY (Joplin and Springfield)

Feeder Cattle Receipts: 9399 Week ago: 6123 Year ago: 6498
 Cow and Bull Receipts: 3089 Week ago: 0 Year ago: 1069
 Compared to last week's higher trade, feeder traded steady to 3.00 lower. Compared to two weeks ago, early week slaughter cows steady to 2.00 higher and slaughter bulls steady. Late week slaughter cows steady to 3.00 lower, slaughter bulls 2.00 to 3.00 lower.

STEERS:		HEIFERS:	
Medium and Large 1		Medium and Large 1	
300-400 lbs.	172.00-203.00	300-400 lbs.	152.00-167.50
400-500 lbs.	155.00-183.00	400-500 lbs.	139.00-161.00
500-600 lbs.	147.50-182.50	500-600 lbs.	138.00-156.00
600-700 lbs.	149.00-167.00	600-700 lbs.	133.00-152.50
700-800 lbs.	139.00-155.00	700-800 lbs.	130.00-142.00
800-900 lbs.	136.00-149.00	800-850 lbs.	124.00-126.00

HOLSTEINS:		SLAUGHTER COWS:	
Large 3		Breaking and Boning (70-85% lean) 51.50-61.50, high dressing 57.00-66.00. Lean (85-90%) 46.00-56.50	
400-500 lbs.	70.00-75.00		
500-600 lbs.	70.00-76.00		
600-700 lbs.	70.00-75.50		
700-800 lbs.	75.00-86.50		
800-900 lbs.	76.00-89.50		
900-1000 lbs.	65.00-78.00		

REPLACEMENT COWS: Medium and Large 1 5-6 yrs 1335-1345 lbs 2nd to 3rd stage 1125.00-1150.00. Medium and Large 1-2 2-7 yrs 945-1365 lbs 2nd to 3rd stage 800.00-1100.00, 1st stage 700.00-1050.00 per head

COW & CALF PAIRS: Medium and Large 1-2 22-7 yrs 925-1250 lbs most rebred with 140-375 lb calves 1200.00-1500.00; few 2-7 yrs 925-1285 lbs with babies to 265 lb calves 925.00-1050.00 per pair

WEST CENTRAL MISSOURI WEEKLY SUMMARY

(Sedalia, Kingsville, Windsor, Butler)

Receipts: 4342 Week ago: 0 Year ago: 2495

Compared to last week, steers and heifers steady to 10.00 higher. Slaughter cows steady to 2.00 higher.

FEEDER STEERS:
Medium and Large 1400-500 lbs. 162.00-186.00
500-600 lbs. 153.50-181.00
600-700 lbs. 145.50-170.00
700-800 lbs. 140.00-166.75
800-900 lbs. 135.00-143.60**FEEDER HEIFERS:**
Medium and Large 1400-500 lbs. 140.00-164.00
500-600 lbs. 132.00-163.00
600-700 lbs. 132.00-155.00
700-750 lbs. 136.50-154.00
Pkg 816 lbs. 123.00**SLAUGHTER BULLS:** Yield Grade 1-2 1080-2505 lbs 76.00-88.50; high dressing 89.50-95.00; low dressing 62.00-76.00**SLAUGHTER COWS:** Breaking and Boning (70-85% lean) 55.00-65.00. Lean (85-90%) 46.50-59.00**REPLACEMENT COWS:** Medium and Large 1-2 2-6 yrs 1085-1395 lbs 2nd to 3rd stage 800.00-1075.00 per head**COW & CALF PAIRS:** Medium and Large 1-2 2-6 yrs 850-1200 lbs with 100-275 lb calves 950.00-1210.00 per pair**EAST CENTRAL MISSOURI WEEKLY SUMMARY**

(Bowling Green, Kingdom City, Macon)

Receipts: 2567 Two weeks ago: 4888 Year ago: 2526

Compared to two weeks ago, feeders under 600 lbs steady to firm undertone, heavier weights 3.00 to 7.00 higher, spots 10.00 higher. Slaughter cows steady to firm.

FEEDER STEERS:
Medium and Large 1400-500 lbs. 179.00-184.00
500-600 lbs. 163.00-182.00
600-700 lbs. 158.00-167.00
700-800 lbs. 151.75-159.50
800-900 lbs. 137.00-145.00
900-1000 lbs. 135.00-145.00**FEEDER HEIFERS:**
Medium and Large 1Few 300-400 lbs. 155.00-160.00
400-500 lbs. 150.00-164.00
500-600 lbs. 142.00-153.00
600-700 lbs. 138.00-150.50
Pot load 705 lbs. 141.75**SLAUGHTER STEERS and HEIFERS:** Choice 2-4 1000-1400 lbs 107.50-111.00. Select 1-2 1000-1400 lbs 100.50-106.50**SLAUGHTER COWS:** Breaking and Boning, (70-85% lean) Average dressing 56.00-62.00; high dressing 62.00-70.00. Lean (85-90%) 48.00-55.00**BRED COWS:** Scarce**SLAUGHTER BULLS:** Yield Grade 1-2 1200-2500 lbs 80.00-90.00; high dressing 93.50; low dressing 70.00-78.00**NORTHEAST MISSOURI WEEKLY SUMMARY**

(Palmyra, Unionville, Green City, New Cambria)

Receipts: 3006 Week ago: 2711 Year ago: 2464

Slaughter Cattle Receipts: 41 Two weeks Ago: 23 Year ago: 2 Compared to last week, feeder had no recent price comparison available, but undertone firm. Compared to two weeks ago, slaughter steers and heifers steady.

FEEDER STEERS:
Medium and Large 1400-500 lbs. 170.00-198.00
500-600 lbs. 170.00-184.50
600-700 lbs. 163.00-173.00
700-800 lbs. 143.50-165.00
800-900 lbs. 147.50-164.50**FEEDER HEIFERS:**
Medium and Large 1-2Pkg 438 lbs. 157.50
500-600 lbs. 154.00-162.00
600-700 lbs. 152.00-157.00
700-800 lbs. 152.25-155.50**SLAUGHTER STEERS:** Choice 2-3 1250-1300 lbs 112.00-113.00**SLAUGHTER COWS:** Breaking and Boning (75-85% lean) 56.00-67.25. Lean (85-90%) 54.00-64.50**SLAUGHTER HEIFERS:** Choice 2-3 pkg 1128 lbs 112.25**SLAUGHTER BULLS:** Yield Grade 1-2 1300-2200 lbs 83.00-96.00**REPLACEMENT COWS:** Medium and Large 1-2 5-6 yrs 1500-1600 lbs mostly 2nd and few 3rd stage 1230.00 per head**COW & CALF PAIRS:** Scarce**SOUTHEAST MISSOURI WEEKLY SUMMARY**

(Patton, Farmington)

Receipts: 2065 Week ago: 0 Year ago: 1673

Compared to two weeks ago, feeders steady to 7.00 higher, spots 12.00 higher on steers. Slaughter cows 3.00 lower. Slaughter bulls steady.

FEEDER STEERS:
Medium and Large 1300-400 lbs. 150.00-197.00
400-500 lbs. 155.00-189.00
500-600 lbs. 149.00-173.00
600-700 lbs. 129.00-150.00
700-800 lbs. 138.50-148.00**FEEDER HEIFERS:**
Medium and Large 1300-400 lbs. 140.00-163.00
400-500 lbs. 135.00-161.00
500-600 lbs. 149.00-173.00
600-700 lbs. 129.00-150.00
700-800 lbs. 138.50-148.00**REPLACEMENT COWS:** Medium and Large 1-2 3-7 yrs 820-1460 lbs 2nd to 3rd stage 725.00-1150.00 per head**SLAUGHTER COWS:** Breaking and Boning (75-85% lean) 49.00-56.00. high dressing 56.50-62.50. Lean (85-90% lean) 40.00-47.50**COW & CALF PAIRS:** Medium and Large 1-2 4 yrs to short solid 780-1240 lbs with 110-320 lb calves 800.00-1360.00 per pair**SLAUGHTER BULLS:** Yield Grade 1-2 few 1200-2040 lbs 74.00-84.00; high dressing 85.00-87.00**SOUTH CENTRAL MISSOURI WEEKLY SUMMARY**

(Cuba, Vienna)

Receipts: 1557 Week ago: 0 Year ago: 1384

Compared to two weeks ago, feeders steady to 5.00 higher, some steers over 500 lbs 6.00 to 12.00 higher. Slaughter cows steady to 4.00 higher.

FEEDER STEERS:
Medium and Large 1300-350 lbs. 195.00-206.00
400-500 lbs. 164.00-179.00
500-600 lbs. 160.00-172.00
600-700 lbs. 154.00-169.75
700-800 lbs. 145.00-149.00**FEEDER HEIFERS:**
Medium and Large 1300-400 lbs. 146.00-156.00
400-500 lbs. 140.00-153.50
500-600 lbs. 137.50-150.00
600-700 lbs. 134.00-140.50
Pkg 809 lbs. 127.25**REPLACEMENT COWS:** Medium and Large 1-2 few yearling plus to 8 yrs 950-1400 lbs 2nd to 3rd stage 835.00-925.00 per head**SLAUGHTER COWS:** Breaking and Boning (70-85% lean) 55.00-61.50, high dressing 60.50-68.50. Lean (85-90%) 49.00-58.00**COW & CALF PAIRS:** Scarce**SLAUGHTER BULLS:** Yield Grade 1-2 1450-2150 lbs 81.25-87.50; high dressing 97.50; low dressing 77.00-79.50**NORTHWEST MISSOURI WEEKLY SUMMARY**

(St Joseph)

Receipts: 2322 Two weeks ago: 1303 Year ago: 901

Compared to two weeks ago, steers mostly steady to 7.00 higher, heifers mostly 3.00 to 8.00 higher, except some light weights sharply lower. Slaughter cows steady to 3.00 higher. Slaughter bulls 4.00 higher.

FEEDER STEERS:
Medium and Large 1400-500 lbs. 164.00-188.00
500-600 lbs. 159.00-168.00
600-700 lbs. 152.75-167.75
700-800 lbs. 140.00-156.50
800-850 lbs. 147.50-154.85
900-950 lbs. 139.25**FEEDER HEIFERS:**
Medium and Large 1300-400 lbs. 140.00-159.00
400-500 lbs. 148.50-156.50
500-600 lbs. 140.25-153.25
600-700 lbs. 134.50-152.50
764 lbs. 139.00
800-850 lbs. 135.00-139.25**SLAUGHTER BULLS:** Yield Grade 1-2 1295-1829 lbs 82.00-89.50, high dressing 90.00-93.50, low dressing 75.00**SLAUGHTER COWS:** Breaking and Boning (70-85% lean) 57.00-65.50; high dressing 65.50-68.00. Lean (85-90%) 50.00-58.00**BRED COWS:** Medium and Large 1 5-8 yrs 1430 lbs 3rd stage 1000.00 per head**COW CALF PAIRS:** Medium and Large 1-2 5-8 yrs 1200 lbs with baby calf 1150.00 per pair

**MISSOURI WEEKLY DIRECT
SLAUGHTER CATTLE REPORT**

Weekly Receipts: 0 Week ago: 760 Year ago: 120
Trading from late last Friday remains inactive due to lower bids.

LIVE STEERS & HEIFERS: No sales reported
DRESSED STEERS & HEIFERS: No sales reported

GRADE AND WEIGHT (Grid): No sales reported

NATIONAL DIRECT DELIVERED FEEDER PIG REORT

Supply includes 60% formulated prices.

Early weaned pigs 10-12 lbs basis: Formula 25.42-44.00, weighted average 33.76. Cash 10.00-20.00, weighted average 15.32.

Feeder Pigs 40 lbs basis: Cash 28.00-39.00, weighted average 31.52.

BY-PRODUCT FEED PRICES

Alfalfa Pellets, St. Louis MO 235.00; Corn Gluten Feed pelleted, Southern MO 188.00-196.00; Distillers Grain Dried, Carrollton 140.00; Soy Hulls Kansas City, MO out. Prices per ton.

**WHOLESALE FEEDSTUFFS PRICES
(DOLLARS PER TON-BULK BASIS)**

Area	Soybean Meal 48% Solvent	Cottonseed Meal 41% Solvent	Meat Meal	Wheat Middlings
Kansas City	316.70	293.75	280.00	87.00
St. Louis	n/a	n/a	n/a	82.50

**Springfield Livestock Marketing Center
Special Dairy Heifer Sale Report for 06/26/2018**

Receipts: 631 Last Month Special: 615 Year Ago: 585
Springer heifers bred seven to nine months: Supreme 1175.00-1230.00, ind registered 1450.00 Approved 900-1100.00, Jerseys 900.00-1075.00. Medium 725.00-825.00, crossbred 650.00-825.00. Common 470.00-575.00. Heifers bred three to six months: Supreme 1075.00-1275.00, crossbreds 1010.00-1100.00. Approved - 825.00-1060.00., crossbreds 800.00-900.00. Medium 600.00-800.00, crossbreds 600.00-675.00. Common 450.00-550.00. Heifers bred one to three months: Supreme couple 1030.00-1050.00. Approved 700.00-950.00, crossbreds 760.00-910.00. Open Heifers: Approved 180-200 lbs 205.00-210.00; 250-300 lbs 280.00-310.00; pkg 305 lbs 340.00; 400-500 lbs 410.00-500.00, crossbreds 360.00-460.00; 440-475 lbs Jerseys 635.00-700.00; pkg 578 lbs 560.00, 500-540 lbs Crossbreds 475.00-530.00; pkg-563 lbs Jerseys 690.00; 600-635 lbs 600.00-660.00, pkg 676 lbs crossbreds 670.00; 750-800 lbs 700.00-730.00. Medium 475-490 lbs 400.00-450.00; pkg 643 lbs 475.00. Replacement Cows Fresh and Milking cows: Medium 690.00-925.00. Springer and Second Stage Cows: Supreme 1100.00-1200.00. Approved - 790.00-975.00. Baby Calves: Holstein bulls 65.00-85.00

**St. Joseph Sheep and Goat Auction
Sheep and Goat Auction Report for 07/12/2018**

Receipts: 1572 Last Month Special: 2210 Year Ago: 1595
SHEEP Slaughter Lambs: Choice, few Prime 2-3 50-80 lbs 150.00-160.00; 80-100.00 145.00-157.50; 100-145 lbs 140.00-152.00. Good to Choice 2-3 60-80 lbs 140.00-147.50; 80-100 lbs 125.00-140.00; 100-115 lbs 120.00. Non-Traditional 50-60 lbs 140.00-167.50, few at 179.00-200.00; 60-80 lbs 140.00-172.00; 90-115 lbs 117.50-130.00. Feeder Lambs: Medium and Large 1 30-50 lbs 170.00-195.00, few at 210.00. Medium and Large 1-2 30-50 lbs 140.00-167.50, few at 130.00-132.50. Slaughter Ewes: Good 2-4 83-199 lbs 50.00-69.00; Utility 1-2 80-225 lbs 30.00-50.00. Replacement Ewes: Young to Middle Aged 95-115 lbs 87.50. Slaughter Bucks: 145-280 lbs 55.00-60.00. Replacement Bucks: Young to Middle Aged 155-220 lbs 80.00-92.50. GOATS Slaughter Kids: Selection 1 30-40 lbs 230.00-255.00; 40-50 lbs 220.00-250.00; 50-60 lbs 250.00-272.50; 60-70 lbs 270.00-277.50. Selection 1-2 30-40 lbs 190.00-225.00; 40-50 195.00-210.00; 50-60 200.00-235.00; 60-70 lbs 230.00-245.00. Selection 2 40-50 lbs 165.00-182.00; 50-60 lbs 150.00-175.00. Wethers Selection 1-2 78-95 lbs 160.00-200.00. Slaughter Nannies: Selection 1-2 86-140 lbs 100.00-136.00. Selection 2 83-138 lbs 60.00-92.50; Selection 3 105-117 lbs 40.00-50.00. Slaughter Billies: Selection 1 98-160 lbs 160.00-185.00. Selection 1-2 85-175 lbs 125.00-155.00. Replacement Nannies: Young to Middle Aged 88-147 lbs 185.00, 160.00 -210.00 by the head.

WEEKLY COMMODITY GRAIN FUTURES TRENDS

Compared to last Friday: Soybeans .59 to .60 lower, Wheat .15 to .13 lower, Corn .17 to .21 lower, KC Wheat .13 to .23 lower, Soybean Meal 11.00 to 14.40 lower.

Daily Grain Futures Closes

	Mon.	Tues.	Wed.	Thu.	Fri.
Soybeans					
Jul	851 3/4	852 1/4	829 1/2	830	814
Aug	855 1/4	855 3/4	833	833 3/4	818 3/4
Sep	861	861	838	839	824 1/2
Nov	872	871 1/2	848 1/4	849 1/4	834 1/4
Jan	881 3/4	881 1/4	858 1/4	859	844 1/4
Wheat					
Jul	507 3/4	489 1/2	469 3/4	482 1/4	481 1/2
Sep	508	492	471 3/4	484 1/2	497
Dec	525	510	490 1/2	501 1/4	512 1/2
Mar	540 1/2	527 1/4	509 1/4	518 1/4	527 1/2
May	550 1/2	538 1/4	521 3/4	530	538 1/2
Corn					
Jul	345 3/4	339 3/4	331 1/4	336 1/2	330 1/4
Sep	354	347 3/4	340	345 3/4	341 1/4
Dec	367	360 3/4	353 1/4	359 1/4	354 3/4
Mar	378	372 1/4	65	371	366 1/2
May	384 3/4	379 1/2	372	377 3/4	373 1/4
KC Wheat					
Jul	487 1/2	483 3/4	463	470 1/4	469 1/4
Sep	506	494 3/4	474	481 1/4	491 3/4
Dec	528 3/4	518 1/4	498 3/4	505 3/4	516 1/4
Mar	545 1/2	536	517 1/4	524	534 3/4
May	554 3/4	546	528	534 3/4	545 1/4
SB Meal					
Jul	331.80	334.40	333.00	333.40	328.80
Aug	329.90	332.20	330.50	330.90	326.00
Sep	330.00	332.50	330.10	330.30	325.40
Oct	329.00	331.50	329.20	329.30	324.50
Dec	327.80	330.30	327.70	327.70	323.00

WEEKLY COMMODITY FUTURES TRENDS

Compared to last week: Live Cattle .77 to 2.30 lower, Lean Hogs 1.42 to 5.27 lower, Feeder Cattle .80 to 1.48 lower, except Jan .15 higher.

Daily Futures Closes

	Mon.	Tues.	Wed.	Thu.	Fri.
Cattle					
Aug	106.12	105.45	103.85	105.02	104.55
Oct	108.62	107.82	106.25	107.06	107.37
Dec	112.95	112.27	110.67	111.57	111.40
Feb	116.40	116.40	115.12	115.95	115.75
Apr	118.05	118.22	117.22	117.82	117.42
Lean Hogs					
Jul	80.22	79.50	79.77	79.95	79.95
Aug	72.77	69.77	78.80	70.42	70.15
Oct	56.12	53.77	52.02	53.95	55.30
Dec	52.55	49.92	46.45	48.75	50.40
Feb	59.10	56.30	52.47	54.95	56.60
Fdr Cat					
Aug	151.45	151.85	149.40	151.02	150.72
Sep	151.77	152.05	149.42	150.97	151.07
Oct	151.72	152.15	149.95	151.27	151.35
Nov	151.60	151.97	150.40	151.07	151.02
Jan	149.22	149.72	148.92	149.42	149.52
Milk					
Jul	14.16	14.18	14.21	14.30	14.27
Aug	14.55	14.60	14.67	14.99	14.78
Sep	15.05	15.05	15.14	15.39	15.23

WESTERN CORNBELT DAILY DIRECT PRIOP DAY HOG REPORTS FOR 7/12/18

BARROWS AND GILTS: Base Price Range 68.00-75.25, weighted average 76.21

SOWS: 300-500 lbs. 30.00-51.00
Over 500 lbs. 36.99-53.00

WEEKLY MARKET SUMMARY
 (USPS 597250)
 To be published weekly by the
 Missouri Department of Agriculture
 1616 Missouri Blvd.
 Jefferson City, MO 65109

Postmaster: Send address changes to:
 Missouri Department of Agriculture
 P.O. Box 630
 Jefferson City, MO 65102

Periodicals postage paid at
 Jefferson City, Missouri

Market News Hotline
1-573-522-9244

July 13, 2018

MISSOURI GRAIN WEEKLY TRENDS

Weekly Trends: Soybeans .52 to .65 lower, Wheat .18 to .23 lower, Corn .02 to .17 lower, Sorghum .34 lower.

Area	#1 Soy-beans	#2 Soft Wheat	#2 Corn	#2 Grain Sorghum
Kansas City				
Friday**	8.57-8.72	5.00-5.25	3.38-3.57	5.71
Monday	8.35-8.50	4.78-5.18	3.32-3.57	5.60
Tuesday	8.36-8.50	4.58-5.02	3.22-3.51	5.50
Wednesday	8.13-8.28	4.42-4.81	3.18-3.43	5.35
Thursday	8.14-8.28	4.55-4.94	3.24-3.51	5.46
Friday	8.05-8.18	4.77-5.07	3.36-3.46	5.37
St. Louis				
Friday**	8.88-8.89	5.25-5.40	3.58-3.62	6.53
Monday	8.67	5.18-5.33	3.52-3.53	6.42
Tuesday	8.67-8.71	5.02-5.17	3.50	6.30
Wednesday	8.43-8.49	4.78-4.96	3.46	6.17
Thursday	8.42-8.43	4.91-5.09	3.55	6.26
Friday	7.99-8.03	5.04-5.22	3.48	6.19
Central				
Friday**	8.47-8.53	4.92-4.96	3.30	—
Monday	8.26-8.31	4.85-4.89	3.24-3.34	—
Tuesday	8.26-8.31	4.69-4.73	3.17-3.18	—
Wednesday	8.03-8.08	4.49-4.53	3.10	—
Thursday	8.04-8.09	4.61-4.66	3.15-3.16	—
Friday	7.89-7.94	4.74-4.78	3.11	—
S.E. MO				
Friday**	8.77-8.92	5.11-5.37	3.45-3.68	—
Monday	8.55-8.69	5.04-5.26	3.39-3.59	—
Tuesday	8.55-8.73	4.91-5.07	3.40-3.54	—
Wednesday	8.31-8.48	4.71-4.86	3.35-3.46	—
Thursday	8.25-8.46	4.84-5.00	3.41-3.54	—
Friday	8.10-8.29	4.96-5.11	3.35-3.49	—

Missouri Crop Progress and Condition Report 07/09/18

Temperatures last week averaged 79.7 degrees, 2.5 degrees above normal. Precipitation averaged 0.23 inches statewide, 0.65 inches below normal. There were 6.5 days suitable for fieldwork for the week ending July 8, 2018. Topsoil moisture supply was rated 28 percent very short, 41 percent short, 30 percent adequate, and 1 percent surplus. Subsoil moisture supply was rated 30 percent very short, 34 percent short, 34 percent adequate, and 2 percent surplus. Corn silking was at 76 percent this week, up 28 percentage points from last week. Corn condition was rated 3 percent very poor, 14 percent poor, 35 percent fair, 42 percent good, and 6 percent excellent. Soybeans blooming reached 43 percent, compared with the 5-year average of 15 percent. Soybeans setting pods reached 4 percent. Soybean condition was rated 4 percent very poor, 12 percent poor, 36 percent fair, 44 percent good, and 4 percent excellent. Cotton squaring progressed to 71 percent, up 3 percentage points from last week. Cotton setting bolls reached 33 percent. Cotton condition was rated 5 percent poor, 32 percent fair, 56 percent good, and 7 percent excellent. Rice headed was reported at 18 percent. Rice condition was rated at 15 percent poor, 23 percent fair, 55 percent good, and 7 percent excellent. Sorghum headed was at 18 percent. Sorghum condition was rated 10 percent poor, 46 percent fair, 41 percent good, and 3 percent excellent. Winter wheat harvested progressed to 95 percent, up 10 percentage points from last week.

(PRICES PER BU. EXCEPT GR. SORG. PER CWT)
 *NEW CROP **PREVIOUS WEEK'S PRICES