

# Weekly Market Summary

Published by:  
**Missouri Department of Agriculture**  
**Ag Business Development Division**  
**Market News Program**



Chris Chinn, Director  
 Davin Althoff, Division Director  
 Tony Hancock, Editor  
<http://www.ams.usda.gov/marketnews.htm>

Michael L. Parson, Governor

Volume XLI, Number 18 ♦ P.O. Box 630, Jefferson City, MO 65102 ♦ (573) 751-4211 ♦ Monday, May 03, 2021

## MISSOURI WEEKLY FEEDER CATTLE WEIGHTED AVERAGE REPORT

Receipts: 21,597 Week ago: 26,412 Year ago: 29,040  
 Steers and Heifers Medium and Large 1—Weighted average weights and prices

### STEERS: Medium and Large 1

271 lbs. 178.20	475 lbs. 174.90	669 lbs. 144.26	867 lbs. 127.92
324 lbs. 182.89	527 lbs. 165.80	722 lbs. 142.90	918 lbs. 125.30
376 lbs. 180.56	569 lbs. 159.69	762 lbs. 136.51	959 lbs. 126.52
426 lbs. 177.76	622 lbs. 152.31	824 lbs. 129.98	1091 lbs. 116.50

### HEIFERS: Medium and Large 1

297 lbs. 154.23	472 lbs. 147.31	678 lbs. 134.22
329 lbs. 157.00	520 lbs. 143.03	718 lbs. 130.43
376 lbs. 152.83	571 lbs. 139.39	766 lbs. 124.89
425 lbs. 150.16	627 lbs. 136.51	815 lbs. 120.06

### Missouri Stocker Formula for 05/03/2021

Monday's Missouri Stocker Formula consists of 4029 head with a weighted average weight of 533.78 lbs. and a price value of 159.51, 5.25 lower than last Monday.

This a rolling seven day calculated weighted value which combines all Feeder Steers reported by MDA/USDA Market News Service weighing from 400-649 lbs. in the Medium and Large 1 and Medium and Large 1-2 frame and muscle classifications, including all comment cattle except Brahman X.

### SOUTH CENTRAL MISSOURI WEEKLY SUMMARY

(West Plains, Ava)

Receipts: 4219 Week ago: 4405 Year Ago: 4608  
 Compared to last week, steers and heifers 2.00 to 6.00 lower, spots up to 10.00 lower early week. Slaughter cows and bulls steady.

#### STEERS:

Medium and Large 1

350-400 lbs.	177.50-188.00
400-500 lbs.	169.00-180.00
500-600 lbs.	153.00-167.00
600-700 lbs.	142.50-144.00
700-800 lbs.	133.50-140.00
900-950 lbs.	124.00-127.00
43 hd 1091 lbs.	116.50

#### Holsteins:

Large 3

Lot 253 lbs.	102.50
22 hd 359 lbs.	106.00

#### HEIFERS:

Medium and Large 1

300-400 lbs.	153.00-164.00
400-500 lbs.	141.00-157.00
500-600 lbs.	134.00-138.00
600-700 lbs.	126.00-138.00
700-750 lbs.	125.00-126.00

#### SLAUGHTER COWS:

Breaking and Boning (70-85% lean) 60.00-69.00, high dressing 67.00-74.00, low dressing 52.00-63.00. Lean (85-90%) 47.50-58.00

#### SLAUGHTER BULLS:

Yield Grade 1-2 1015-2280 lbs. 85.00-95.00; high dressing 94.00-104.00; low dressing 70.00-85.00

#### REPLACEMENT COWS: Medium

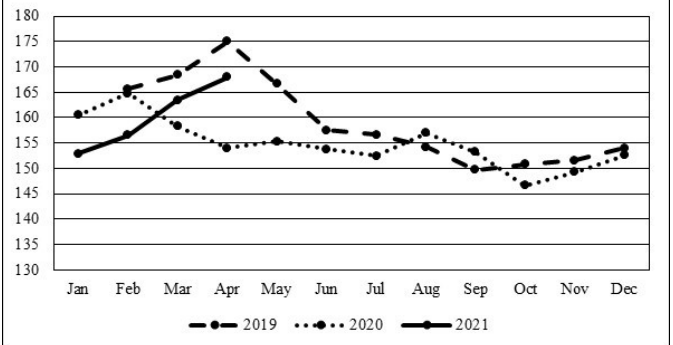
and Large 1-2 2-8 yrs 1015-1565 lbs 2nd to 3rd stage 800.00-1350.00, 1st stage 850.00-1000.00 per head

#### COW & CALF PAIRS:

Medium and Large 1-2 2-8 yrs 1000-1413 lbs with baby to 300 lb calves 1250.00-1600.00 per pair

The Weekly Market Summary, as well as historical summaries, are available on our website <https://agmarketnews.mo.gov/summaries>  
 Market News Hotline: 1-573-522-9244

### Missouri Stocker Formula



\*Graph is updated the first Monday of each month.

### SOUTHWEST MISSOURI WEEKLY SUMMARY

(Joplin and Springfield)

Feeder Cattle Receipts: 6100 Week Ago: 5855 Year ago: 8495  
 Cow and Bull Receipts: 1620 Week ago: 1570 Year ago: 988  
 Compared to last week, steers under 600 lbs 2.00 to 5.00 lower, over 600 lbs steady. Heifers 2.00 to 4.00 lower, most decline on heavier weights. Slaughter cows early week steady to 2.00 higher, late week steady to 1.00 lower. Slaughter bulls 2.00 to 3.00 higher early week, steady to 1.00 lower late week.

#### STEERS:

Medium and Large 1

300-400 lbs.	184.00-205.00
400-500 lbs.	169.00-182.00
500-600 lbs.	161.00-176.00
600-700 lbs.	147.00-168.00
700-750 lbs.	138.50-146.00
800-900 lbs.	121.00-131.00
900-1000 lbs.	124.50-125.25

#### HOLSTEINS:

Large 3

Pkg 336 lbs.	110.00
450-500 lbs.	80.00-108.00
500-600 lbs.	83.00-110.00
600-700 lbs.	97.00-102.50
700-800 lbs.	86.00-100.50
800-900 lbs.	75.00-93.00
Few 900-950 lbs.	60.00-88.50

#### HEIFERS:

Medium and Large 1

300-400 lbs.	150.00-165.00
400-500 lbs.	146.00-158.00
500-600 lbs.	135.00-144.00
600-700 lbs.	125.00-133.00
700-800 lbs.	123.00-132.00
Load 813 lbs.	121.00
Pkg 924 lbs.	120.00

#### SLAUGHTER COWS: Breaking

and Boning (70-85% lean) 60.00-70.00, high dressing 65.50-76.00; low dressing 51.00-65.00. Lean (85-90%) 46.00-56.50

#### SLAUGHTER BULLS: Yield

Grade 1-2 1020-2430 lbs 85.00-96.00; high dressing 95.00-108.00; low dressing 74.00-85.00

#### REPLACEMENT COWS: Medium

and Large 1-2 2-8 yrs 1025-1365 lbs 2nd to 3rd stage 900.00-1150.00; 1st stage 760.00-1075.00 per head

#### COW & CALF PAIRS: Medium

and Large 1 2-8 yrs 1150-1355 lbs with baby to 150 lb calves 1350.00-1550.00. Medium and Large 1-2 2-8 yrs 900-1345 lbs with baby to 150 lb calves 1200.00-1300.00; 2-8 yrs 1130-1360 lbs couple rebred 2nd stage with 150-300 lb calves 1275.00-1525.00 per pair

**WEST CENTRAL MISSOURI WEEKLY SUMMARY**

(Sedalia, Kingsville, Windsor, Butler)

Receipts: 4468 Week ago: 4354 Year ago: 6327

Compared to last week, steers and heifers steady to 6.00 lower. Slaughter cows 2.00 lower to 2.00 higher.

**FEEDER STEERS:**

Medium and Large 1

400-500 lbs. 165.00-183.00  
 500-600 lbs. 151.00-179.00  
 600-700 lbs. 145.00-155.00  
 700-800 lbs. 134.00-145.25  
 800-900 lbs. 127.00-131.60

**FEEDER HEIFERS:**

Medium and Large 1

400-500 lbs. 141.00-158.00  
 500-600 lbs. 132.00-153.50  
 600-700 lbs. 126.00-142.50  
 700-800 lbs. 129.25-133.50

**SLAUGHTER BULLS:** Yield  
 Grade 1-2 1165-2375 lbs 85.00-96.00; high dressing 98.50-108.50; low dressing 69.50-82.00

**REPLACEMENT COWS:** Medium and Large 1 5-8 yrs 1228-1295 lbs 2nd to 3rd stage 1475.00-1500.00. Medium and Large 1-2 2-4 yrs pkg 1003 lbs 2nd to 3rd stage 1325.00 per head

**SLAUGHTER COWS:** Breaking and Boning (70-85% lean) 59.00-71.50, high dressing 67.00-77.50; low dressing 55.00-62.50. Lean (85-90%) 48.00-59.00

**COW & CALF PAIRS:** Medium and Large 1 2-4 yrs 950-1050 lbs with 150-300 lb calves 2050.00-2500.00; 5-8 yrs 1200-1400 lbs with 150-300 lb calves 1700.00-2000.00 per head

**NORTHEAST MISSOURI WEEKLY SUMMARY**

(Bowling Green, Kingdom City, Palmyra)

Receipts: 2984 Week ago: 7423 Year ago: 4563

Compared to last week, steers under 550 lbs traded with a lower undertone, 550-700 lbs 5.00 to 10.00 lower, 700-800 lbs steady to 3.00 lower. Heifers mostly 2.00 to 5.00 lower. Slaughter cows steady to 2.00 higher.

**FEEDER STEERS:**

Medium and Large 1

15 hd 469 lbs. 181.00  
 Pkg 515 lbs. 174.50  
 550-600 lbs. 149.50-155.50  
 665 lbs. 139.00-141.00  
 700-800 lbs. 132.00-149.25  
 800-900 lbs. 123.00-130.00  
 48 hd 957 lbs. 128.35

**SLAUGHTER BULLS:** Yield  
 Grade 1-2 1250-2390 lbs 85.00-96.00; high dressing 97.00-107.50; low dressing 74.00-84.50

**SLAUGHTER STEERS:** Choice 2-3 120.00-125.00. Select and Choice 1-3 120.00. Select and Choice 2-3 117.00-120.50

**SLAUGHTER HEIFERS:** Choice 2-3 120.00-125.50. Select and Choice 1-3 116.00-120.00

**FEEDER HEIFERS:**

Medium and Large 1

300-350 lbs. 166.00-171.00  
 400-500 lbs. 148.00-156.00  
 500-600 lbs. 144.00-152.00  
 650-700 lbs. 133.50-137.00  
 24 hd 714 lbs. 132.25  
 800-850 lbs. 121.00

**SLAUGHTER COWS:** Breaking and Boning, (70-85% lean) 55.00-63.50; high dressing 63.50-81.50. Lean (85-90%) 52.00-61.50

**BRED COWS:** Scarce**NORTH CENTRAL MISSOURI WEEKLY SUMMARY**

(Macon, Unionville, Green City, New Cambria)

Receipts: 2374 Week ago: 3090 Year ago: 3063

Compared to last week, steers and heifers 3.00 to 6.00 lower. Slaughter cows steady.

**FEEDER STEERS:**

Medium and Large 1

450-500 lbs. 170.00-176.00  
 500-600 lbs. 160.00-168.00  
 600-700 lbs. 144.00-154.50  
 700-800 lbs. 137.00-145.00  
 Lot 810 lbs. 127.00

**SLAUGHTER BULLS:** Yield  
 Grade 1-2 1635-2340 lbs 88.50-96.00; low dressing ind 83.00

**COW & CALF PAIRS:** Scarce**FEEDER HEIFERS:**

Medium and Large 1

Pkg 396 lbs. 161.50  
 400-500 lbs. 150.00-167.00  
 500-600 lbs. 137.25-154.00  
 600-700 lbs. 133.75-141.10  
 Pkg 726 lbs. 132.00

**SLAUGHTER COWS:** Breaking and Boning (75-85% lean) 56.00-69.50; high dressing 64.00-73.00. Lean (85-90%) 53.00-59.00

**BRED COWS:** Scarce**SOUTHEAST MISSOURI WEEKLY SUMMARY**

(Patton, Farmington)

Receipts: 1233 Week ago: 2199 Year ago: 1101

Compared to last week, steers and heifers steady to 10.00 lower. Slaughter cows and bulls steady to 2.00 lower.

**FEEDER STEERS:**

Medium and Large 1

300-400 lbs. 149.00-175.00  
 400-500 lbs. 150.00-177.00  
 500-600 lbs. 127.00-164.00  
 600-700 lbs. 120.00-152.00  
 700-800 lbs. 118.00-128.00

**REPLACEMENT COWS:** Medium and Large 2 2-8 yrs 1030-1340 lbs 3rd stage 760.00-1125.00 per head

**COW & CALF PAIRS:** Medium and Large 2 2-8 yrs 1000-1100 lbs with baby to over 300 lb calves 1050.00-1260.00 per head

**FEEDER HEIFERS:**

Medium and Large 1

300-400 lbs. 125.00-156.00  
 400-500 lbs. 125.00-156.00  
 500-600 lbs. 119.00-145.00  
 600-700 lbs. 115.00-122.00

**SLAUGHTER COWS:** Breaking and Boning (75-85% lean) 50.00-64.00; high dressing 63.00-73.00. Lean (85-90% lean) 33.00-55.00

**SLAUGHTER BULLS:** Yield  
 Grade 1-2 1005-1995 lbs 71.00-85.50; high dressing 83.00-99.00

**EAST CENTRAL MISSOURI WEEKLY SUMMARY**

(Cuba, Vienna)

Receipts: 2206 Week ago: 1902 Year ago: 2528

Compared to last week, steers steady to 10.00 lower, heifers 1.00 to 4.00 lower. Slaughter cows steady to 3.00 lower.

**FEEDER STEERS:**

Medium and Large 1

300-400 lbs. 165.00-192.00  
 400-500 lbs. 160.00-185.00  
 500-600 lbs. 142.50-176.00  
 600-700 lbs. 135.00-151.50  
 700-750 lbs. 131.50-139.00  
 800-850 lbs. 128.50-129.50

**REPLACEMENT COWS:** Medium and Large 1-2 2-8 yrs 1205-1520 lbs 2nd to 3rd stage 870.00-1220.00; 5-8 yrs 990-1480 lbs 1st to 3rd stage 825.00-1070.00 per head

**COW & CALF PAIRS:** 2-8 yrs 975-1210 lbs rebred 1st to 2nd stage with over 300 lb calves 1400.00-1740.00 per pair

**FEEDER HEIFERS:**

Medium and Large 1

350-400 lbs. 142.00-151.50  
 400-500 lbs. 140.00-149.00  
 500-600 lbs. 128.50-140.25  
 600-700 lbs. 125.00-131.75  
 Few 800-850 lbs. 108.50-109.50

**SLAUGHTER COWS:** Breaking and Boning (70-85% lean) 56.00-65.50; high dressing 63.25-67.50. Lean (85-90%) 48.00-57.50

**SLAUGHTER BULLS:** Yield  
 Grade 1-2 1255-2595 lbs 82.00-96.50; high dressing ind 102.00; low dressing couple 60.00-80.00

**NORTHWEST MISSOURI WEEKLY SUMMARY**

(St Joseph)

Receipts: 2039 Week Ago: 1825 Year ago: 2339

Compared to last week, steers 6.00 to 8.00 lower and heifers steady to 2.00 lower. Slaughter cows steady to 1.00 lower. Slaughter bulls 2.00 lower.

**FEEDER STEERS:**

Medium and Large 1

Lot 379 lbs. 193.00  
 400-500 lbs. 170.50-199.00  
 500-600 lbs. 156.25-181.00  
 600-700 lbs. 142.00-154.75  
 700-750 lbs. 140.00-145.50

**SLAUGHTER BULLS:** Yield  
 Grade 1-2 1215-2290 lbs 86.00-96.00; high dressing ind 99.00; few low dressing 65.00-75.00

**BRED COWS:** Scarce**FEEDER HEIFERS:**

Medium and Large 1

300-400 lbs. 160.00-176.00  
 400-500 lbs. 152.00-168.00  
 500-600 lbs. 147.00-157.00  
 600-700 lbs. 135.50-141.75

**SLAUGHTER COWS:** Breaking and Boning (75-85% lean) 60.00-69.50. Lean (85-90%) 50.00-58.00

**COW CALF PAIRS:** Scarce

**MISSOURI WEEKLY DIRECT  
SLAUGHTER CATTLE REPORT 04/30/21**

Weekly Receipts: 520 Week ago: 200 Year ago: 240  
Trading this week: light with flat dressed sales 2.00 lower.

LIVE STEERS & HEIFERS: No sales reported  
DRESSED STEERS & HEIFERS: 4 load Wed flat 190.00

GRADE AND WEIGHT (Grid): 9 loads Thu morn 194.00

**NATIONAL DIRECT DELIVERED FEEDER PIG REPORT**

04/30/21 Receipts: 81,026 Week ago: 94,062

Supply includes 39% formulated prices. Early weaned pigs 10-12 lbs basis: Formula 42.06-53.94, weighted average 46.84. Cash 40.00-58.00, weighted average 50.56. Feeder pigs 40 pounds basis: Cash 81.00-101.00, weighted average 93.13

**WEEKLY LIVESTOCK SLAUGHTER 05/01/21**

	Cattle	Hogs	Sheep
Week to Date:	649,000	2,454,000	37,000
Last Week:	665,000	2,473,000	36,000
Last Year:	439,000	1,540,000	37,000

**WHOLESALE FEEDSTUFFS PRICES 04/27/21**  
(DOLLARS PER TON-BULK BASIS)

Area	Soybean Hulls - Bulk	Soybean Meal 48% Solvent	Cottonseed Meal 41% Solvent	Meat Meal	Wheat Middlings
Kansas City	180.00	425.15	455.00	390.00	145.00
St. Louis	N/A	440.50	457.50	N/A	137.50

**NATIONAL BOXED BEEF CUTOUT/BOXED BEEF CUTS**

Date	Choice	Select	Total Loads
04/30	296.50	283.05	78
04/29	293.76	279.79	125
04/28	292.50	279.00	130
04/27	290.99	279.53	105
04/26	285.20	274.35	87
5 Day Simple Average	291.79	279.14	

**Missouri Weekly Sheep/Goat Auction Summary 04/30/21**

Receipts: 926 Week Ago: 949 Last Year: 2185

(All prices CWT unless noted.) SHEEP: Slaughter lambs woolled and shorn Choice and Prime 1-3 pkg 58 lbs 302.50; pkg 68 lbs 280.00. Hari Choice and Prime 1-3 15-25 lbs 300.00-310.00; 30-40 lbs 265.00-277.50; 40-50 lbs 267.50-285.00; 50-60 lbs 265.00-280.00; 60-80 lbs 270.00-290.00; 80-90 lbs 275.00-290.00. Choice 1-3 30-40 lbs 230.00-260.00; 40-60 lbs 245.00-265.00; 60-70 lbs 235.00-265.00; 70 lbs 250.00-255.00; few 90-100 lbs 250.00-255.00. Good 1-2 40-95 lbs 185.00-220.00. Slaughter ewes hair Good 2-3 82 lbs 140.00-172.50; 90-100 lbs 150.00-155.00; 100-140 lbs 137.50-165.00. Utility and Good 1-3 80-145 lbs 110.00-130.00. Cull and Utility 1-2 pkg 155 lbs 105.00. Bucks 1-2 150-155 lbs 90.00-125.00; 215-230 lbs 110.00. Hair bucks 1-2 100-145 lbs 115.00-127.50; 160-190 lbs 117.50-130.00.

GOATS: Feeder kids Selection 1 pkg 24 lbs 395.00; few 30-40 lbs 420.00. Selection 2 30-40 lbs 340.00-360.00; pkg 43 lbs 305.00. Selection 3 30-45 lbs 260.00. Slaughter kids Selection 1 50-60 lbs 420.00-455.00; 70-80 lbs 400.00-415.00; pkg 83 lbs 370.00. Selection 2 50-60 lbs 300.00-340.00; 60-70 lbs 300.00-350.00. Slaughter nannies/does Selection 1-2 110-130 lbs 190.00-222.50. Bucks/billies Selection 1-2 100-145 lbs 265.00-270.00. Replacement nannies/does Selection 1-2 2-4 yrs 80-100 lbs exposed 235.00-262.50.

**WEEKLY COMMODITY GRAIN FUTURES TRENDS**

Compared to last Friday, Soybeans May, Jul, Aug 0.04 to 0.32 higher and Sep, Nov 0.01 to 0.02 lower, Wheat 0.16 to 0.32 higher, Corn 0.12 to 0.85 higher, KC Wheat 0.19 to 0.25 higher, Soybean Meal May, Jul 0.30 to 3.60 higher, Aug, Sep, Oct 6.20 lower.

Daily Grain Futures Closes

	Mon.	Tues.	Wed.	Thu.	Fri.
Soybeans					
May	1569	1549 3/4	1557 3/4	1542 1/2	1571
Jul	1539 1/4	1519 1/2	1513 3/4	1502 1/4	1534 1/4
Aug	1489	1469 1/2	1455 3/4	1443 1/4	1471 1/4
Sep	1404	1384 3/4	1366 3/4	1356 1/2	1381 1/4
Nov	1362	1342 1/2	1328	1318 3/4	1339 3/4
Wheat					
May	739 1/2	733 3/4	725 1/4	737 1/2	742 1/2
Jul	739 1/2	732 3/4	722 3/4	729	734 3/4
Sep	738 3/4	732 1/2	720 3/4	727	732 1/4
Dec	741	734	720 1/2	727	732 3/4
Mar	743 1/4	736 1/4	722 1/4	729 1/2	736
Corn					
May	680 1/2	695 1/2	686 1/4	702	740
Jul	657 1/2	654 1/2	644	648 1/4	673 1/4
Sep	593	586	571 1/2	570 1/2	592 1/4
Dec	568 1/4	562 1/4	546 1/2	546 1/4	563 3/4
Mar	572 1/2	567 1/2	552 1/4	552	568 1/2
KC Wheat					
May	701 3/4	704 1/4	689 1/4	688 1/2	698 1/4
Jul	708 3/4	711 1/4	696 1/2	694 1/2	703 1/2
Sep	713	714 1/2	700	698 1/2	707 1/4
Dec	719 1/4	719 1/2	705	704 1/4	713 1/4
Mar	725 3/4	725	711	710 3/4	720
SB Meal					
May	428.80	425.50	421.30	422.60	426.00
Jul	431.50	426.80	421.80	423.00	426.10
Aug	427.60	422.00	416.10	416.90	419.70
Sep	421.40	451.90	409.90	410.30	411.90
Oct	413.20	408.10	402.70	402.90	402.50

**WEEKLY COMMODITY FUTURES TRENDS**

Compared to last Friday, Live Cattle 0.17 to 3.45 lower, Lean Hogs 4.02 to 6.88 higher, Feeder Cattle 3.62 to 6.05 lower.

Daily Futures Closes

	Mon.	Tues.	Wed.	Thu.	Fri.
Cattle					
Apr	118.50	118.37	118.95	119.47	116.00
Jun	116.27	115.85	115.45	116.05	116.57
Aug	117.95	117.30	116.47	117.40	118.62
Oct	122.77	122.10	121.05	121.55	122.90
Dec	126.65	126.12	124.85	124.97	126.25
Lean Hogs					
May	109.25	109.80	111.27	108.72	110.12
Jun	106.85	106.67	109.12	106.72	109.72
Jul	105.67	105.32	107.95	106.25	109.25
Aug	102.30	102.07	103.92	102.67	105.50
Oct	87.00	86.85	88.45	87.30	88.70
Fdr Cat					
Apr	132.75	134.20	133.87	134.47	—
May	137.27	135.87	134.97	135.85	133.60
Aug	150.30	150.07	148.90	149.87	146.75
Sep	152.27	152.20	150.90	151.62	149.27
Oct	153.60	153.70	152.27	152.82	151.30
Milk					
Apr	17.66	17.64	17.64	17.63	17.64
May	19.36	19.20	19.22	19.22	19.18
Jun	19.50	19.52	19.64	19.75	19.86

**NATIONAL DAILY DIRECT PRIOR DAY HOG REPORTS**  
**FOR 05/03/2021**

**BARROWS AND GILTS (Carcass Basis):** 3906 head  
Base Price 106.82-120.00, weighted average 111.52

**SOWS (Live Basis):** 7882 head  
300-500 lbs. 57.00-85.00  
Over 500 lbs. 62.00-85.00

Missouri Weekly Cattle Auction Summary 05/03/21

Receipts: 21,597 Week ago: 26,412 Year ago: 29,040

Compared to last week, feeders sold 2.00 to 6.00 lower, with several spots of as much as 10.00 lower. The supply of feeders was light to moderate and demand was moderate. Supplies were mostly calves as expected for this time of year, with only about 40 percent of the feeder offering over 600 lbs. Some areas of the state received storms and heavy rains mid-week, which had some impact but most of the usual high volume sales in the state had already taken place before rains came. The big news that continues to weight on the cattle markets is the climbing grain prices, specifically corn which blew past the 6.00 mark without even slowing down then passed 7.00 in most areas and is sitting in the 7.60's at some of the river elevators on Friday afternoon. The cattle on feed report, which everyone viewed as bullish, was totally over shadowed by corn prices and did not boost the markets even the slightest this week. Boxed beef cutouts continue to climb. Choice closed on Friday at 296.50, up 12.73 and select closed at 283.05, up 10.92 compared to the previous week. That makes the choice 74.00 higher than the 6 year average Friday close which even includes May of last year when prices were heavily impacted by covid disruptions. Despite the climbing values of beef feedlots were unable to see any gains this week and actually sold slaughter cattle slightly lower. As of the afternoon report on Friday, negotiated trade was only about 69k head, with live sales for the week reported mostly from 118.00-120.00 and dressed sales mostly 190.00-191.00. The Missouri Stocker Formula consist of 4029 head, with a weighted average weight of 533.78 lbs. and a price value of 159.51, 5.25 lower than last week.

Afternoon National Slaughter Cattle Review for 04/30/21

Thus far for Friday negotiated cash trading has been mostly inactive on light demand in Nebraska, and the Western Cornbelt. Not enough purchases for a full market trend. Negotiated cash trading has been at a standstill in the Texas Panhandle, Kansas and Colorado. On Wednesday live purchases traded from 118.00-119.00 in the Texas Panhandle and at 118.00 in Kansas. On Wednesday in Nebraska, live purchases traded from 119.00-120.00 and dressed purchases traded from 190.00-191.00. On Monday in Colorado live purchases traded at 119.00. On Wednesday in the Western Cornbelt live purchases traded at 119.00 and dressed purchases traded from 190.00- 191.00.

Negotiated Sales:					
Confirmed:	2600	Week Ago:	1402	Year Ago:	7881
Live Basis		Steers		Heifers	
Over 80% Choice		119.00		119.00	
65-80% Choice		-		-	
35-65% Choice		-		-	
0-35% Choice		-		-	
Total All Grades		119.00		119.00	
Dressed Basis		Steers		Heifers	
Over 80% Choice		195.00		-	
65-80% Choice		188.00		-	
35-65% Choice		-		-	
0-35% Choice		-		-	
Total All Grades		188.00-195.00, avg 191.88		-	

MISSOURI GRAIN WEEKLY TRENDS

Compared to last Friday, Soybeans 0.02 lower to 0.26 higher, Wheat 0.18 to 0.25 higher, Corn 0.27 to 0.80 higher, Sorghum 0.03 lower to 0.59 higher.

Area	#1 Soybeans	#2 Soft Wheat	#2 Corn	#2 Grain Sorghum
<b>Kansas City</b>				
Friday**	15.75-15.85	7.10	6.66-6.70	6.96
Monday	15.89-16.09	7.39	6.90-6.94	7.25
Tuesday	15.60-15.70	7.34	6.75-6.85	7.36
Wednesday	15.54-15.64	7.25	6.65-6.79	6.94
Thursday	15.42-15.52	7.38	6.68-6.88	6.98
Friday	15.74-15.84	7.43	6.93-7.13	7.23
<b>St. Louis</b>				
Friday**	15.73	7.35-7.40	6.88-6.89	7.31-7.36
Monday	15.99-16.02	7.64-7.69	7.11-7.12	7.55-7.60
Tuesday	15.84	7.58-7.63	7.26-7.27	7.71-7.76
Wednesday	15.91	7.48-7.53	7.14	7.04-7.61
Thursday	15.72	7.54-7.59	7.30	7.08-7.77
Friday	15.99-16.00	7.60-7.65	7.66-7.68	7.33-7.90
<b>Central</b>				
Friday**	15.55-15.60	6.91	6.51-6.56	---
Monday	15.84-15.94	7.20	6.75-6.80	---
Tuesday	15.42-15.70	7.15	6.73-6.85	---
Wednesday	15.59-15.64	7.04-7.06	6.62-6.75	---
Thursday	15.47-15.52	7.10-7.19	6.66-6.78	---
Friday	15.79-15.84	7.16-7.24	6.91-7.03	---
<b>S.E. MO</b>				
Friday**	15.60-15.72	---	6.74-6.87	---
Monday	15.89-16.01	---	6.99-7.11	---
Tuesday	15.72-15.82	---	7.16-7.27	---
Wednesday	15.76-15.90	---	7.03-7.16	---
Thursday	15.68-15.73	---	7.22-7.30	---
Friday	15.95-16.00	---	7.60-7.66	---

(PRICES PER BUSHEL) \*NEW CROP \*\*PREVIOUS WEEK'S PRICES

MISSOURI CROP PROGRESS AND CONDITION 04/26/21

There were 3.3 days suitable for fieldwork for the week ending April 25, 2021. Temperatures last week averaged 47.3 degrees statewide, 10.7 degrees below normal. Precipitation averaged 0.88 inches, 0.18 inches below normal. Topsoil moisture supply was rated 1 percent short, 82 percent adequate, and 17 percent surplus. Subsoil moisture supply was rated 1 percent short, 87 percent adequate, and 12 percent surplus. Corn planted was 20 percent complete, compared to the 5-year average of 44 percent. Corn emerged was 5 percent, compared to the 5-year average of 12 percent. Soybeans planted was 3 percent complete, even with the 5-year average. Soybeans emerged was 1 percent. Rice planted was 44 percent complete, compared to the 5-year average of 49 percent. Rice emerged was 21 percent, compared to the 5-year average of 15 percent. Winter wheat headed was 8 percent complete, compared to the 5-year average of 23 percent. Winter wheat condition was rated 5 percent poor, 34 percent fair, 54 percent good, and 7 percent excellent.

	Week Ending			2016-2020 Average
	4/25/21	4/18/21	4/25/20	
Corn Planted	20	14	23	44
Corn Emerged	5	1	4	12
Soybeans Planted	3	1	2	3
Rice Planted	44	26	20	49
Rice Emerged	21	2	2	15
Winter Wheat Headed	8	4	17	23