

# Weekly Market Summary

Published by:  
**Missouri Department of Agriculture**  
**Ag Business Development Division**  
**Market News Program**



Chris Chinn, Director  
 Davin Althoff, Division Director  
 Tony Hancock, Editor  
 agmarketnews.mo.gov  
<http://www.ams.usda.gov/marketnews.htm>

Michael L. Parson, Governor

Volume XLI, Number 46 ♦ P.O. Box 630, Jefferson City, MO 65102 ♦ (573) 751-4211 ♦ Monday, Nov 15, 2021

## MISSOURI WEEKLY FEEDER CATTLE WEIGHTED AVERAGE REPORT

Receipts: 34,488 Week ago: 26,906 Year ago: 31,071  
 Steers and Heifers Medium and Large 1—Weighted average weights and prices

### STEERS: Medium and Large 1

325 lbs. 183.61	524 lbs. 173.04	731 lbs. 157.19	925 lbs. 149.07
375 lbs. 184.40	570 lbs. 167.50	776 lbs. 156.98	983 lbs. 147.00
428 lbs. 183.85	620 lbs. 161.33	825 lbs. 157.75	
475 lbs. 179.81	671 lbs. 159.57	877 lbs. 158.64	

### HEIFERS: Medium and Large 1

333 lbs. 156.51	526 lbs. 147.08	724 lbs. 149.25	923 lbs. 128.52
378 lbs. 158.29	577 lbs. 146.74	766 lbs. 151.20	990 lbs. 127.88
426 lbs. 155.19	620 lbs. 149.62	814 lbs. 135.59	1011 lbs. 122.00
474 lbs. 151.46	673 lbs. 150.59	885 lbs. 135.46	

### Missouri Stocker Formula for 11/15/2021

Monday's Missouri Stocker Formula consists of 7163 head with a weighted average weight of **544.86** lbs. and a price value of **163.09**, 2.38 lower than last Monday.

This a rolling seven day calculated weighted value which combines all Feeder Steers reported by MDA/USDA Market News Service weighing from 400-649 lbs. in the Medium and Large 1 and Medium and Large 1-2 frame and muscle classifications, including all comment cattle except Brahman X.

### SOUTH CENTRAL MISSOURI WEEKLY SUMMARY

(West Plains, Ava)

Receipts: 7439 Week ago: 5373 Year Ago: 8625

Compared to last week, feeders sold steady to 8.00 higher, except some steers calves late week that sold steady to 4.00 lower. Slaughter cows and bulls sold steady to 4.00 lower.

#### STEERS:

Medium and Large 1

300-400 lbs.	177.00-205.00
400-500 lbs.	173.00-188.00
500-600 lbs.	158.00-181.00
600-700 lbs.	155.00-167.00
700-800 lbs.	140.00-156.00
800-900 lbs.	150.00-154.50
21 hd 922 lbs.	155.00

#### Holsteins

Large 3

Scarce

#### HEIFERS:

Medium and Large 1

300-400 lbs.	154.00-160.00
400-500 lbs.	146.00-156.00
500-600 lbs.	139.00-152.50
600-700 lbs.	134.00-148.50
700-800 lbs.	120.00-148.00
800-900 lbs.	120.00-140.00

#### SLAUGHTER COWS:

Breaking and Boning (70-85% lean) 53.00-66.00, high dressing 63.00-73.00, low dressing 40.00-57.00. Lean (85-90%) 45.00-55.00

#### SLAUGHTER BULLS:

Yield Grade 1-2 1190-2195 lbs. 80.00-92.00; high dressing 92.00-105.00; low dressing 62.00-79.00

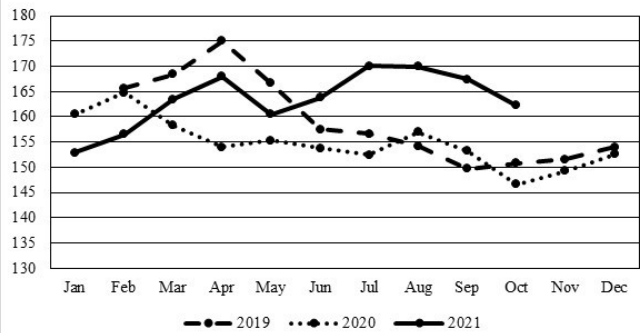
#### COW & CALF PAIRS:

Medium and Large 1-2 2-8 yrs pkg 1250 lbs with 150-300 lb calves 1350.00; few 2-8 yrs 1205-1250 lbs rebred 1st stage 1450.00-1500.00 per pair

#### REPLACEMENT COWS:

Medium and Large 1-2 2-8 yrs 1024-1475 lbs 2nd to 3rd stage 950.00-1350.00, 1st stage 925.00-950.00 per head

### Missouri Stocker Formula



\*Graph is updated the first Monday of each month.

### SOUTHWEST MISSOURI WEEKLY SUMMARY

(Joplin and Springfield)

Receipts: 11,702 Week Ago: 10,151 Year ago: 8583

Compared to last week, feeder steers sold steady to 3.00 higher, with some yearlings as much as 13.00 higher. Heifers sold uneven from 4.00 lower to 3.00 higher. Slaughter cows sold steady to 4.00 lower and bulls sold steady to 2.00 lower.

#### STEERS:

Medium and Large 1

350-400 lbs.	185.00-192.50
400-500 lbs.	167.00-202.50
500-600 lbs.	153.00-173.00
600-700 lbs.	146.00-166.00
700-800 lbs.	150.00-162.50
800-900 lbs.	147.00-162.75
12 hd 983 lbs.	147.00

#### HOLSTEINS:

Large 3

300-350 lbs.	99.00-100.00
10 hd 427 lbs.	94.50
500-600 lbs.	92.50-98.50
Pkg 601 lbs.	97.00
700-800 lbs.	92.00-102.00
800-900 lbs.	80.00-100.00
900-1000 lbs.	91.50-95.00

#### REPLACEMENT COWS:

Medium and Large 1-2 2-8 yrs 940-1530 lbs 2nd to 3rd stage 650.00-1250.00, 1st stage 750.00-775.00 per head

#### BRED HEIFERS:

Medium and Large 1-2 less than 2 yrs 950-1115 lbs 2nd to 3rd stage 785.00-850.00; 2-4 yrs 790-1280 lbs 2nd to 3rd stage 700.00-1150.00, 1st stage 750.00-825.00 per head

#### HEIFERS:

Medium and Large 1

300-400 lbs.	150.00-170.00
400-500 lbs.	136.00-159.00
500-600 lbs.	134.00-154.00
600-700 lbs.	137.00-156.00
700-800 lbs.	139.00-155.25
800-850 lbs.	127.00-128.50
900-1000 lbs.	121.00-128.50
32 hd 1011 lbs.	122.00

#### SLAUGHTER COWS:

Breaking and Boning (70-85% lean) 51.50-67.50, high dressing 64.00-75.00. low dressing 42.50-58.50. Lean (85-90%) 43.00-55.00

#### SLAUGHTER BULLS:

Yield Grade 1-2 1260-2170 lbs 80.00-96.00; high dressing 89.00-97.00; low dressing 73.00-81.00

#### COW & CALF PAIRS:

Medium and Large 1-2 2-8 yrs 1000-1515 lbs with baby to over 300 lb calves 1000.00-1650.00; fancy pkg 10 hd 1150 lbs with 150-300 lb calves 1950.00 per pair

The Weekly Market Summary, as well as historical summaries, are available on our website <https://agmarketnews.mo.gov/summaries>  
 Market News Hotline: 1-573-522-9244

**WEST CENTRAL MISSOURI WEEKLY SUMMARY**

(Kingsville, Windsor, Butler)

Receipts: 5882 Week ago: 4388 Year ago: 6276

Compared to last week, calves sold uneven from 3.00 lower to 5.00 higher, yearlings sold steady to 3.00 higher. Slaughter cows sold 3.00 to 5.00 lower.

**FEEDER STEERS:**  
Medium and Large 1

400-500 lbs.	172.00-202.00
500-600 lbs.	156.00-189.00
600-700 lbs.	152.00-174.00
700-800 lbs.	146.00-164.25
800-900 lbs.	148.00-159.85
900-950 lbs.	141.00-144.75

**FEEDER HEIFERS:**  
Medium and Large 1

400-500 lbs.	149.00-169.50
500-600 lbs.	139.50-165.00
600-700 lbs.	144.00-165.00
700-800 lbs.	145.00-165.00
900-1000 lbs.	122.50-124.50

**SLAUGHTER BULLS:** Yield Grade 1-2 1300-2150 lbs 70.00-89.50; high dressing 93.00-101.00 low dressing 64.00-72.00**SLAUGHTER COWS:** Breaking and Boning (70-85% lean) 47.00-66.00, high dressing 55.00-70.00; low dressing 34.00-53.00. Lean (85-90%) 43.50-52.50**REPLACEMENT COWS:** Medium and Large 1 2-8 yrs 1365-1410 lbs 2nd to 3rd stage 1075.00-1250.00. Medium and Large 1-2 2-8 yrs 1000-1360 lbs 2nd to 3rd stage 950.00-1125.00. per head**COW & CALF PAIRS:** Medium and Large 1-2 5-8 yrs 1100-1215 lbs with 150-300 lb calves 975.00-1450.00 per pair**NORTHEAST MISSOURI WEEKLY SUMMARY**

(Bowling Green, Kingdom City, Palmyra)

Receipts: 4309 Week ago: 5458 Year ago: 3588

Compared to last week, feeder sold steady to 6.00 higher and slaughter cows sold steady to 3.00 lower.

**FEEDER STEERS:**  
Medium and Large 1

400-500 lbs.	179.50-192.00
500-600 lbs.	162.00-189.00
600-700 lbs.	155.00-161.00
700-800 lbs.	154.00-167.00
Pkg 811 lbs.	161.00

**FEEDER HEIFERS:**  
Medium and Large 1

400-500 lbs.	154.00-167.00
500-600 lbs.	145.00-158.00
600-700 lbs.	145.00-164.00
700-800 lbs.	143.75-153.50
800-900 lbs.	136.50-139.75
Pkg 910 lbs.	136.25

**SLAUGHTER BULLS:** Yield Grade 1-2 1300-2275 lbs 84.00-94.00; few high dressing 96.00; low dressing 70.00-82.00**SLAUGHTER COWS:** Breaking and Boning, (70-85% lean) 54.00-67.00; high dressing 61.00-75.50. Lean (85-90%) 51.00-59.00**SLAUGHTER STEERS:** Choice 2-3 130.50-133.00. Select and Choice 1-3 125.00-128.00.**BRED COWS:** Scarce**SLAUGHTER HEIFERS:** Choice 2-3 131.75. Select and Choice 1-2 125.00-129.00.**NORTH CENTRAL MISSOURI WEEKLY SUMMARY**

(Macon, Unionville, Green City, New Cambria)

Receipts: 6379 Week ago: 4028 Year ago: 2480

Compared to last week, feeders extremely mixed with some heavy yearlings and weaned lots steady to 3.00 higher, a much larger supply of unweaned and new crop calves steady to as much as 10.00 lower.

**FEEDER STEERS:**  
Medium and Large 1

400-500 lbs.	179.50-189.00
500-600 lbs.	166.00-180.00
600-700 lbs.	151.00-175.00
700-800 lbs.	151.50-165.00
800-900 lbs.	156.75-162.00

**FEEDER HEIFERS:**  
Medium and Large 1

400-500 lbs.	147.00-178.50
500-600 lbs.	142.50-151.50
600-700 lbs.	143.50-166.00

**SLAUGHTER BULLS:** Yield Grade 1-2 1400-2275 lbs. 75.00-96.00; few low dressing 74.00-81.00**SLAUGHTER COWS:** Breaking and Boning (75-85% lean) 52.00-62.50; high dressing 60.00-72.00; low dressing 43.50-56.00. Lean (85-90%) 40.00-56.00**COW & CALF PAIRS:** Medium and Large 1-2 2-8 yrs 950-1300 lbs with 150-300 lbs calves 1475.00-2400.00 per pair.**BRED COWS:** Medium and Large 1 pkg 2-8 yrs 1374 lbs 2nd stage 1550.00 per head. Medium and Large 1-2 2-8 yrs 1150-1375 lbs 2nd stage 1200.00-1475.00 per head.**SOUTHEAST MISSOURI WEEKLY SUMMARY**

(Jackson and Farmington)

Receipts: 1872 Week ago: 2476 Year ago: 2444

Compared to last week, feeder sold uneven from 10.00 lower to 1.00 higher. Slaughter cows and bulls sold 2.00 lower.

**FEEDER STEERS:**  
Medium and Large 1

300-400 lbs.	150.00-180.00
400-500 lbs.	151.00-190.00
500-600 lbs.	140.00-170.00
600-700 lbs.	129.00-154.00
700-800 lbs.	130.00-149.00

**FEEDER HEIFERS:**  
Medium and Large 1

300-400 lbs.	132.00-152.00
400-500 lbs.	125.00-146.00
500-600 lbs.	125.00-148.00
600-700 lbs.	122.00-135.00
700-750 lbs.	125.00-133.00

**REPLACEMENT COWS:** Medium and Large 2 2-8 yrs 1000-1425 lbs 2nd to 3rd stage 600.00-1035.00 per head**SLAUGHTER COWS:** Breaking and Boning (75-85% lean) 40.00-55.00; high dressing 54.00-68.00. Lean (85-90% lean) 30.00-48.00**COW & CALF PAIRS:** Medium and Large 2 2-8 yrs 1000-1300 lbs with baby to 300 lb calves 900.00-1350.00 per pair**SLAUGHTER BULLS:** Yield Grade 1-2 1050-2350 lbs 60.00-79.00; high dressing 80.50-90.00**EAST CENTRAL MISSOURI WEEKLY SUMMARY**

(Cuba, Vienna)

Receipts: 4307 Week ago: 2667 Year ago: 4266

Compared to last week, feeders sold steady to 6.00 higher. Slaughter cows sold steady to 4.00 lower.

**FEEDER STEERS:**  
Medium and Large 1

300-400 lbs.	180.00-200.00
400-500 lbs.	170.00-187.00
500-600 lbs.	157.00-179.00
600-700 lbs.	150.00-172.00
700-800 lbs.	145.00-159.00

**FEEDER HEIFERS:**  
Medium and Large 1

300-400 lbs.	155.00-162.00
400-500 lbs.	144.00-166.00
500-600 lbs.	137.50-155.00
600-700 lbs.	134.00-150.50
700-750 lbs.	137.00-143.50

**BRED COWS:** Medium and Large 1 2-8 yrs pkg 1180 lbs 2nd to 3rd stage 1525.00. Medium and Large 1-2 2-8 yrs 845-1270 lbs 2nd to 3rd stage 950.00-1350.00 per head**SLAUGHTER COWS:** Breaking and Boning (70-85% lean) 50.00-60.50; high dressing 58.00-66.00. Lean (85-90%) 42.00-53.00**COW & CALF PAIRS:** Medium and Large 1 pkg 2-8 yrs 850 lbs with 150-300 lb calves 1675.00. Medium and Large 1-2 2-8 yrs 800-1495 lbs with 150-300 lb calves 950.00-1650.00 per pair**SLAUGHTER BULLS:** Yield Grade 1-2 935-2350 lbs 75.00-90.50; high dressing ind 92.00; low dressing 62.00-76.00**MISSOURI WEEKLY DIRECT  
SLAUGHTER CATTLE REPORT 11/12/21**

Weekly Receipts: 280 Week ago: 640 Year ago: 320

Trading this week, light with flat dressed sales 3.00 to 6.00 higher. Grid dressed sales 4.00 higher.

**LIVE STEERS & HEIFERS:** scarce**DRESSED STEERS & HEIFERS:** 5 loads Wed flat 206.00**GRADE AND WEIGHT (Grid):** 2 loads Thu 212.00**NATIONAL DIRECT DELIVERED FEEDER PIG REPORT**

11/12/21 Receipts: 60,766 Week ago: 135,793 Year Ago: 91,657 Early weaned pigs 10-12 lbs. basis: Formula 39.53-58.57, weighted average 49.05. Cash 35.00-59.00, weighted average 53.74. Feeder pigs 40 pounds basis: Cash 62.00-73.00, weighted average 67.34

**NATIONAL DAILY DIRECT PRIOR DAY HOG REPORTS  
FOR 11/12/2021****BARROWS AND GILTS (Carcass Basis):** 3733 head Base Carcass Price, 57.00-60.00, weighted average 58.24**SOWS (Live Basis):** 8052 head  
300-500 lbs. 43.00-79.69  
Over 500 lbs. 63.72-81.00

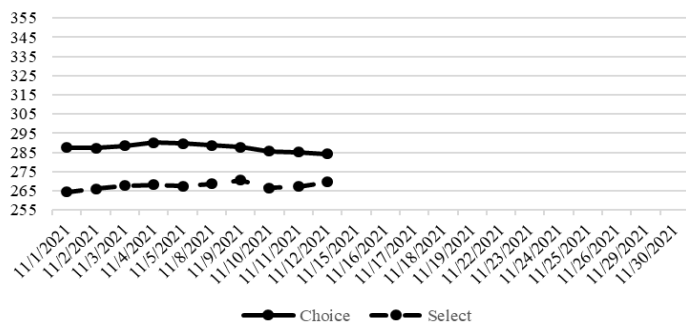
**WHOLESALE FEEDSTUFFS PRICES 11/09/21**  
(DOLLARS PER TON-BULK BASIS)

Area	Soybean Hulls - Bulk	Soybean Meal 48% Solvent	Cottonseed Meal 41% Solvent	Meat Meal	Wheat Middlings
Kansas City	150.00	342.50	347.50	340.00	205.00
St. Louis	n/a	366.50	342.50	n/a	185.00

**NATIONAL BOXED BEEF CUTOUT/BOXED BEEF CUTS**

Date	Choice	Select	Total Loads
11/12	284.30	269.53	117
11/11	285.14	267.29	133
11/10	285.52	266.62	195
11/9	287.80	270.62	200
11/8	288.65	268.60	103
<b>5 Day Simple Average</b>	286.28	268.53	

**Boxed Beef Cuts November 2021**



**Missouri Weekly Sheep/Goat Auction Summary 11/12/21**

Receipts: 502 Week Ago: 760 Last Year: 2279

(All prices CWT unless noted.) SHEEP: Feeder lambs Small and Medium 1-2 35-50 lbs 335.00-365.00. Slaughter lambs wooled and shorn Choice and Prime 1-3 90-110 lbs 235.00-250.00. Choice 1-2 pkg 113 lbs 215.00. Hair Choice and Prime 1-3 50-60 lbs 325.00-340.00; 60-70 lbs 295.00-310.00; 70-80 lbs 275.00-305.00; 80-90 lbs 245.00-255.00. Choice 1-2 55 lbs 295.00-310.00; 60-70 lbs 265.00-285.00; 70-80 lbs 265.00-270.00. Slaughter ewes Utility and Good 1-3 100-225 lbs 110.00-115.00.

GOATS: Feeder kids Selection 1 30-40 lbs 390.00-420.00; 40-50 lbs 335.00-355.00. Selection 1-2 pkg 35 lbs 375.00; pkg 45 lbs 305.00. Slaughter kids Selection 1 50-60 lbs 345.00-355.00; 60-70 lbs 325.00-340.00. Selection 1-2 pkg 53 lbs 320.00; pkg 78 lbs 295.00; pkg 81 lbs 285.00; pkg 95 lbs 270.00.

**WEEKLY COMMODITY GRAIN FUTURES TRENDS**

Compared to last Friday, Soybeans 0.37 to 0.42 higher, Wheat 0.41 to 0.51 higher, Corn 0.12 to 0.24 higher. KC Wheat 0.42 to 0.55 higher, Soybean Meal 20.60 to 29.40 higher.

Daily Grain Futures Closes

	Mon.	Tues.	Wed.	Thu.	Fri.
<b>Soybeans</b>					
Nov	1178	1199 1/2	1203 1/2	1212 1/4	1234
Jan	1188 1/2	1212	1216 3/4	1221 1/2	1244 1/4
Mar	1200 3/4	1223 3/4	1229	1233 1/4	1256 1/4
May	1212	1234 1/2	1239 1/2	1242 3/4	1265 1/2
Jul	1220 1/2	1242 1/4	1247 1/4	1249 3/4	1272 3/4
<b>Wheat</b>					
Dec	768	778 1/2	803	812 1/2	817
Mar	781 1/4	790 1/4	815	824 1/4	828 1/2
May	785 3/4	794	817 1/2	827 1/4	832 1/4
Jul	776 1/4	784 1/4	805 1/2	814 1/4	818
Sep	776 3/4	784	804 3/4	812 3/4	815 3/4
<b>Corn</b>					
Dec	551 1/2	554 3/4	569 1/4	569 1/2	577 1/4
Mar	561	564 1/4	578 3/4	578	585
May	566	569 1/4	583 1/2	582 1/4	588 3/4
Jul	568 1/4	571 1/4	584 3/4	583 1/4	588 3/4
Sep	546	549 1/2	559 1/4	558	560 1/2
<b>KC Wheat</b>					
Dec	780 3/4	793 1/2	817 1/2	828	833
Mar	785	798	821 3/4	830 3/4	835 1/2
May	786 1/4	798 3/4	821 1/2	829 3/4	834 1/4
Jul	776	787 3/4	807 3/4	814	818
Sep	777 1/4	786 1/4	804 1/2	810	813
<b>SB Meal</b>					
Dec	331.80	342.50	342.40	344.50	362.10
Jan	328.30	337.90	338.40	340.90	356.60
Mar	327.00	336.30	337.50	339.00	353.20
May	329.20	338.50	339.60	340.70	353.40
Jul	332.70	342.10	343.30	344.00	355.80

**WEEKLY COMMODITY FUTURES TRENDS**

Compared to last Friday, Live Cattle uneven Jun and Dec 0.22 to 0.32 higher, others 0.05 to 1.02 lower. Lean Hogs Dec 0.68 lower, others 0.38 to 1.37 higher, Feeder Cattle 1.60 to 2.62 lower.

Daily Futures Closes

	Mon.	Tues.	Wed.	Thu.	Fri.
<b>Cattle</b>					
Dec	132.10	132.20	132.00	131.87	132.12
Feb	137.12	136.70	136.82	136.40	136.10
Apr	140.40	140.25	140.32	140.25	139.90
Jun	135.60	135.67	135.82	135.62	135.52
Aug	134.80	134.97	134.80	134.80	134.55
<b>Lean Hogs</b>					
Dec	73.67	74.95	75.70	75.37	75.87
Feb	79.37	78.75	79.32	79.07	80.55
Apr	84.02	83.55	84.15	83.82	85.22
May	88.40	88.12	88.40	88.00	89.25
Jun	94.67	94.40	94.80	94.07	94.80
<b>Fdr Cat</b>					
Nov	158.57	157.90	156.65	157.32	156.25
Jan	160.30	159.80	158.05	159.07	157.72
Mar	161.40	161.02	159.57	160.45	159.17
Apr	164.22	163.67	162.17	162.95	161.77
May	166.42	165.70	164.05	164.60	163.47
<b>Milk</b>					
Nov	18.05	18.12	18.10	18.19	18.01
Dec	17.68	18.11	18.03	18.08	17.62
Jan	18.07	18.45	18.35	18.48	18.17

**WEEKLY LIVESTOCK SLAUGHTER 11/13/21**

	Cattle	Hogs	Sheep
Week to Date:	655,000	2,614,000	38,000
Last Week:	650,000	2,603,000	35,000
Last Year:	657,000	2,681,000	38,000

**Missouri Weekly Cattle Auction Summary 11/15/21**

Receipts: 34,488 Week ago: 26,906 Year ago: 31,071

Compared to last week, feeder steers and heifers sold uneven. The better quality weaned and vaccinated cattle were steady to 5.00 higher while a much larger showing of unweaned, new crop calves, several in smaller lot sizes, sold steady to 5.00 lower. The fall feeder run is under way now that October is gone and the number of non-holiday marketing weeks left in the year is dwindling. The larger number of these lesser desirable types caused most of the weighted average prices on paper to fall lower this week as well. Still plenty of good money to be made and those producers investing and adding value to their product are still finding very good demand for them. Several load lots of heavy 8 weight steers still falling really close on either side of that 160.00 mark as they have been for several weeks. The weather is slowly creeping colder; feedlots, farmer feeders, and wheat grazers all like that as good cold dry weather is the most efficient time to add weight to cattle but still not quite finding a constant stable cold just yet. Boxed beef cutout values were mixed this week, choice closed on Friday at 284.30, down 5.24 and select closed at 269.53, up 2.01 compared to last week. As of Friday afternoons report negotiated feedlot sales totaled just over 13.5K head. Live sales for the week were mostly 132.00 and dressed sales mostly 207.00. The Missouri Stocker Formula consist of 7163 head with a weighted average of 544.86 lbs. and a price value of 163.09, 2.38 lower than last week.

**MISSOURI GRAIN WEEKLY TRENDS**

Compared to last Friday, Soybeans 0.29 to 0.47 higher, Corn 0.21 to 0.34 higher, Sorghum 0.04 to 0.24 higher.

Area	#1 Soybeans	#2 Soft Wheat	#2 Corn	#2 Grain Sorghum
<u>Kansas City</u>				
Friday**	12.06-12.26	—	5.63-5.68	5.73-5.88
Monday	11.89-12.09	—	5.62-5.67	5.72-5.87
Tuesday	12.12-12.32	—	5.65-5.75	5.75-5.90
Wednesday	12.17-12.37	—	5.79-5.89	5.89-6.04
Thursday	Holiday	—	—	—
Friday	12.44-12.64	—	5.87-6.02	5.97-6.12
<u>St. Louis</u>				
Friday**	12.07-12.14	—	5.51-5.59	5.18-5.68
Monday	11.90-11.94	—	5.50-5.56	5.17-5.67
Tuesday	12.14-12.21	—	5.57-5.61	5.20-5.57
Wednesday	12.23-12.26	—	5.67	5.34-5.71
Thursday	Holiday	—	—	—
Friday	12.54-12.60	—	5.83-5.83	5.42-5.72
<u>Central</u>				
Friday**	11.86-12.01	—	5.53	—
Monday	11.69-11.84	—	5.52	—
Tuesday	11.92-12.07	—	5.55	—
Wednesday	11.97-12.12	—	5.69	—
Thursday	Holiday	—	—	—
Friday	12.24-12.39	—	5.77	—
<u>S.E. MO</u>				
Friday**	11.91-12.11	—	5.38-5.58	—
Monday	11.75-11.94	—	5.39-5.52	—
Tuesday	11.97-12.17	—	5.33-5.55	—
Wednesday	12.04-12.22	—	5.47-5.69	—
Thursday	Holiday	—	—	—
Friday	12.38-12.52	—	5.58-5.79	—

(PRICES PER BUSHEL) \*NEW CROP \*\*PREVIOUS WEEK'S PRICES  
\*Most locations not providing cash wheat bids at this time, due to temporary transportation issues.\*

**Afternoon National Slaughter Cattle Review for 11/12/21**

Thus far for Friday in the Southern Plains, Nebraska and Colorado negotiated cash trading has been slow on light demand. In the Southern Plains live purchases have traded steady to 1.00 higher at 132.00, when compared to the last reported market on Wednesday. In Nebraska live purchases have traded steady at 132.00, when compared to the last reported market on Thursday. The last dressed purchase market was on Wednesday with trades at 207.00. In Colorado live purchases traded at 132.00, with no comparable market. So far for Friday in the Western Cornbelt negotiated cash trading has been mostly inactive with light demand. Not enough purchases for a market trend. The last report live purchase market was on Thursday with trades at 132.00. The last reported dressed purchase market was on Wednesday with trades at 207.00.

Negotiated Cash Sales:					
Confirmed:	14,803	Week Ago:	44,868	Year Ago:	38,149
Week to date:	113,600	Week Ago:	90,245	Year Ago:	116,023
Live Basis		Steers		Heifers	
Over 80% Choice		130.00-132.00 avg 131.82		132.00-132.00 avg 132.00	
65-80% Choice		132.00-132.00 avg 132.00		132.00-132.00 avg 132.00	
35-65% Choice		132.00-132.00 avg 132.00		132.00-132.00 avg 132.00	
0-35% Choice		-		-	
Total All Grades		130.00-132.00 avg 131.92		132.00-132.00 avg 132.00	
Dressed Basis					
Over 80% Choice		-		203.00-212.00 avg 208.92	
65-80% Choice		-		-	
35-65% Choice		-		-	
0-35% Choice		-		-	
Total All Grades		-		203.00-212.00 avg 208.92	

**MISSOURI CROP PROGRESS AND CONDITION 11/8/21**

There were 4.9 days suitable for fieldwork for the week ending November 7, 2021. Temperatures last week averaged 44.5 degrees statewide, 4.2 degrees below normal. Precipitation averaged 0.09 inches, 0.86 inches below normal. Topsoil moisture supply was rated 1 percent very short, 6 percent short, 86 percent adequate, and 7 percent surplus. Subsoil moisture supply was rated 1 percent very short, 9 percent short, 88 percent adequate, and 2 percent surplus. Corn harvested for grain was 91 percent complete, compared to the 5-year average of 88 percent. Soybeans harvested was 71 percent complete, compared to the 5-year average of 75 percent. Cotton harvested was 75 percent complete, compared to the 5-year average of 80 percent. Rice harvested was 95 percent complete, compared to the 5-year average of 96 percent. Winter wheat planted was 77 percent, compared to the 5-year average of 72 percent. Winter wheat emerged was 59 percent, compared to the 5-year average of 51 percent. Winter wheat condition was rated 4 percent poor, 33 percent fair, 56 percent good, and 7 percent excellent.

	Week Ending			2016-2020 Average
	11/07/21	10/31/21	11/07/20	
Corn Harvested	91	86	89	88
Soybeans Harvested	71	59	76	75
Cotton harvested	75	59	59	80
Rice harvested	95	90	94	96
Winter wheat planted	77	63	74	72
Winter wheat emerged	59	45	54	51