

Weekly Market Summary

Published by:
Missouri Department of Agriculture
Ag Business Development Division
Market News Program



Chris Chinn, Director
 Davin Althoff, Division Director
 Tony Hancock, Editor
<http://www.ams.usda.gov/marketnews.htm>
agmarketnews.mo.gov

Michael L. Parson, Governor

Volume XLII, Number 9 ♦ P.O. Box 630, Jefferson City, MO 65102 ♦ (573) 751-4211 ♦ Monday, March 7, 2022

MISSOURI WEEKLY FEEDER CATTLE WEIGHTED AVERAGE REPORT

Receipts: 26,687 Week ago: 24,869 Year ago: 45,203

Steers and Heifers Medium and Large 1—Weighted average weights and prices

STEERS: Medium and Large 1

276 lbs. 212.49	476 lbs. 211.91	668 lbs. 172.28	870 lbs. 151.98
327 lbs. 215.25	530 lbs. 205.34	722 lbs. 166.15	939 lbs. 146.33
377 lbs. 217.65	571 lbs. 198.46	772 lbs. 158.42	
427 lbs. 216.44	627 lbs. 182.75	832 lbs. 149.33	

HEIFERS: Medium and Large 1

320 lbs. 173.84	530 lbs. 172.39	717 lbs. 150.82
377 lbs. 179.44	576 lbs. 169.42	766 lbs. 151.99
428 lbs. 177.63	621 lbs. 158.70	815 lbs. 138.40
473 lbs. 178.28	671 lbs. 153.92	950 lbs. 140.98

Missouri Steer (Heifer) Stocker Formula for 3/7/2022

Monday's Missouri Stocker Formula consists of **5879 (5752)** head with a weighted average weight of **547.07 (535.60)** lbs. and a price value of **194.01 (166.07)**, 0.67 higher (0.86 higher) than last Monday.

This a rolling seven day calculated weighted value which combines all Feeder Steers reported by MDA/USDA Market News Service weighing from 400-649 lbs. in the Medium and Large 1 and Medium and Large 1-2 frame and muscle classifications, including all comment cattle except Brahman X. Heifer values are in parentheses.

SOUTH CENTRAL MISSOURI WEEKLY SUMMARY

(West Plains, Ava)

Receipts: 6516 Week ago: 2222 Year Ago: 6659

Compared to last week, steer calves 4.00 to 8.00 higher, spots 10.00 higher, heifer calves steady to 5.00 higher. Yearlings mostly steady. Slaughter cows 2.00 to 9.00 higher. Slaughter bulls 2.00 to 4.00 higher.

STEERS:

Medium and Large 1

300-400 lbs.	21000-232.00
400-500 lbs.	195.00-238.00
500-600 lbs.	187.00-222.00
600-700 lbs.	163.50-203.00
700-800 lbs.	149.75-170.00
800-900 lbs.	144.00-149.00

Holsteins

Large 3

Scarce

HEIFERS:

Medium and Large 1

300-400 lbs.	169.00-179.00
400-500 lbs.	165.00-179.00
500-600 lbs.	153.00-175.50
600-700 lbs.	145.00-160.00
700-750 lbs.	143.50-153.00

Scarce

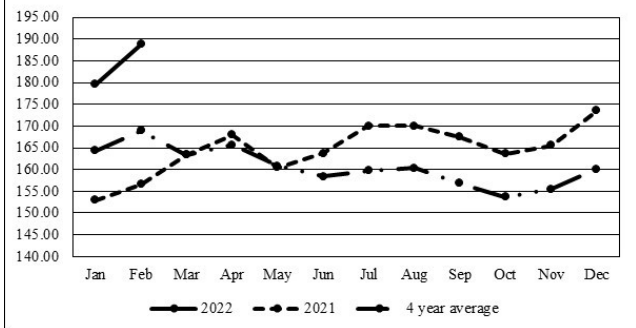
SLAUGHTER COWS: Breaking and Boning (70-85% lean) 73.50-88.00, high dressing 86.00-102.00; low dressing 55.00-76.00. Lean (85-90%) 62.50-78.00
SLAUGHTER BULLS: Yield Grade 1-2 1135-2310 lbs 96.00-112.00; high dressing 111.00-125.00; low dressing 70.00-99.00

BRED COWS: Medium and Large 1-2 2-8 yrs 990-1545 lbs 2nd to 3rd stage 1000.00-1300.00, 1st stage 1075.00-1150.00; over 8 yrs 1145-1185 lbs 2nd to 3rd stage 785.00-925.00 per head

COW & CALF PAIRS: Medium and Large 1-2 2-8 yrs 925-1230 lbs with 150-300 lb calves 1300.00-1500.00; 2-8 yrs 1342 lbs rebred 1st stage with 150-300 lb calves 1625.00 per pair

The Weekly Market Summary, as well as historical summaries, are available on our website
<https://agmarketnews.mo.gov/summaries>
 Market News Hotline: 1-573-522-9244

Missouri Stocker Formula - Steers



*Graph is updated the first Monday of each month.

SOUTHWEST MISSOURI WEEKLY SUMMARY

(Joplin and Springfield)

Receipts: 7318 Week Ago: 10,019 Year ago: 18,520

Compared to last week, steers under 500 lbs 3.00 to 5.00 higher, over 500 lbs steady. Heifers steady to 3.00 higher, except some heifer calves steady to 2.00 lower. Slaughter cows 4.00 to 7.00 higher. Slaughter bulls steady to 4.00 higher.

STEERS:

Medium and Large 1

300-400 lbs.	210.00-229.00
400-500 lbs.	191.00-225.00
500-600 lbs.	184.00-216.00
600-700 lbs.	162.50-185.00
700-800 lbs.	153.00-172.50
800-900 lbs.	152.00-161.60
10 hd 933 lbs.	

HOLSTEINS:

Large 3

Scarce

HEIFERS:

Medium and Large 1

300-400 lbs.	172.00-190.00
400-500 lbs.	166.00-191.00
500-600 lbs.	157.00-185.00
600-700 lbs.	150.00-170.00
700-800 lbs.	144.50-160.00
800-850 lbs.	136.00-146.00
39 hd 950 lbs.	142.00

SLAUGHTER COWS: Breaking and Boning (70-85% lean) 75.00-93.00, high dressing 86.00-102.00; low dressing 63.00-79.00. Lean (85-90%) 62.00-80.00

SLAUGHTER BULLS: Yield Grade 1-2 1275-2245 lbs 97.00-112.00; high dressing 110.00-134.00; low dressing 88.00-95.00

BRED COWS: Medium and Large 1 2-8 yrs 1235-1713 lbs 2nd to 3rd stage 1425.00-1635.00. Medium and Large 1-2 2-8 yrs 1010-1445 lbs 2nd to 3rd stage 925.00-1550.00, 1st stage 925.00-1060.00; over 8 yrs 1005-1345 lbs 2nd to 3rd stage 800.00-1125.00 per head

COW & CALF PAIRS: Medium and Large 1-2 2-8 yrs 1570-1860 lbs rebred 1st or 2nd stage with over 300 lb calves 1675.00-1935.00 per pair

WEST CENTRAL MISSOURI WEEKLY SUMMARY

(Kingsville, Windsor, Butler)

Receipts: 6658 Week ago: 4720 Year ago: 9276

Compared to last week, steers and heifers mostly steady, some calves under 550 lbs up to 5.00 higher. Slaughter cows steady to 3.00 higher.

FEEDER STEERS:
Medium and Large 1

400-500 lbs.	199.00-225.50
500-600 lbs.	183.50-225.00
600-700 lbs.	165.50-196.75
700-800 lbs.	152.00-171.25
800-900 lbs.	140.00-155.75
900-950 lbs.	140.00-149.25

FEEDER HEIFERS:
Medium and Large 1

300-400 lbs.	161.00-189.00
400-500 lbs.	165.00-197.00
500-600 lbs.	160.50-189.25
600-700 lbs.	148.50-173.50
700-800 lbs.	142.00-157.50

SLAUGHTER BULLS: Yield Grade 1-2 1255-2565 lbs 98.00-111.00; high dressing 112.00-127.00; low dressing 80.00-96.00

SLAUGHTER COWS: Breaking and Boning (70-85% lean) 75.50-89.50, high dressing 85.00-99.00; low dressing 65.00-77.50. Lean (85-90%) 64.00-82.00

BRED COWS: Scarce

COW & CALF PAIRS: scarce

NORTHEAST MISSOURI WEEKLY SUMMARY

(Bowling Green, Kingdom City, Palmyra)

Receipts: 4433 Week ago: 4254 Year ago: 6367

Compared to last week on a lighter test, steers under 600 lbs mostly 4.00 to 8.00 lower, 600-650 lbs mostly steady, over 650 lbs not well tested, lower undertone noted. Heifers under 550 lbs steady to firm, over 550 lbs not well tested. Slaughter cows steady to firm.

FEEDER STEERS:
Medium and Large 1

400-500 lbs.	200.00-225.00
500-600 lbs.	183.00-218.00
600-700 lbs.	161.00-191.50
700-800 lbs.	157.00-170.25
800-900 lbs.	140.00-148.50
900-950 lbs.	145.75-148.00

FEEDER HEIFERS:
Medium and Large 1

300-400 lbs.	178.00-190.00
400-500 lbs.	174.00-197.00
500-600 lbs.	161.00-190.00
600-700 lbs.	146.25-165.50

SLAUGHTER BULLS: Yield Grade 1-2 1445-2475 lbs 94.00-115.00; high dressing 107.00-125.00; low dressing 82.00-101.00

SLAUGHTER COWS: Breaking and Boning, (70-85% lean) 67.50-84.50; high dressing 77.00-93.00; low dressing 58.00-74.50. Lean (85-90%) 58.00-73.00

SLAUGHTER STEERS: Choice and Prime 2-3 145.00. Choice 2-3 140.00-151.00. Choice 3-4 140.00-144.00. Select and Choice 1-3 138.50

BRED COWS: Medium and Large 1 2-8 yrs 990-1367 lbs 3rd stage 1650.00-1900.00. Medium and Large 1-2 2-8 yrs 990-1525 lbs 3rd stage 1275.00-1625.00, 1st stage 1085.00; over 5 yrs pkg 1445 lbs 3rd stage 1200.00 per head

SLAUGHTER HEIFERS: Choice 2-3 140.00-146.00. Select and Choice 1-3 138.00

NORTH CENTRAL MISSOURI WEEKLY SUMMARY

(Macon, Unionville, Green City, New Cambria)

Receipts: 3404 Week ago: 5598 Year ago: 3839

Compared to last week, steers and heifers unevenly steady from 4.00 lower to 4.00 higher. Slaughter cows 6.00 to 8.00 higher.

FEEDER STEERS:
Medium and Large 1

400-500 lbs.	201.50-220.50
500-600 lbs.	193.50-217.50
600-700 lbs.	170.00-197.75
700-800 lbs.	160.50-170.50

FEEDER HEIFERS:
Medium and Large 1

400-500 lbs.	174.00-185.00
500-600 lbs.	162.50-184.50
600-700 lbs.	155.75-170.50
700-800 lbs.	152.50-154.50

SLAUGHTER BULLS: Yield Grade 1-2 1380-2180 lbs 87.00-103.00; high dressing 106.50-116.00

SLAUGHTER COWS: Breaking and Boning, (70-85% lean) 67.00-86.50; high dressing 80.50-90.00. Lean (85-90%) 56.00-67.00

BRED COWS: Scarce

COW & CALF PAIRS: Scarce

SOUTHEAST MISSOURI WEEKLY SUMMARY

(Jackson and Farmington)

Receipts: 1801 Week ago: 349 Year ago: 1861

Compared to last week, steers and heifers uneven from 6.00 lower to 5.00 higher. Slaughter cows 2.00 higher. Slaughter bulls steady.

FEEDER STEERS:
Medium and Large 1

300-400 lbs.	190.00-220.00
400-500 lbs.	178.00-207.50
500-600 lbs.	160.50-197.00
600-700 lbs.	155.00-176.00
700-800 lbs.	140.00-149.00

FEEDER HEIFERS:
Medium and Large 1

300-400 lbs.	157.50-180.00
400-500 lbs.	150.00-179.00
500-600 lbs.	145.00-173.00
600-700 lbs.	138.50-159.00
700-800 lbs.	135.00-142.00

SLAUGHTER BULLS: Yield Grade 1-2 1425-2000 lbs 84.00-95.00, high dressing 97.00-122.00

SLAUGHTER COWS: Breaking and Boning (75-85% lean) 59.00-79.00; high dressing 77.00-85.50. Lean (85-90% lean) 46.00-65.00

BRED COWS: Medium and Large 2 2-8 yrs 1030-1228 lbs 2nd to 3rd stage 600.00-1110.00 per head

COW & CALF PAIRS: Scarce

EAST CENTRAL MISSOURI WEEKLY SUMMARY

(Cuba, Vienna)

Receipts: 1512 Week ago: 1023 Year ago: 1860

Compared to last week, steers under 550 lbs 5.00 to 10.00 higher, over 550 lbs steady to 6.00 lower. Heifers under 600 lbs steady to 2.00 higher, over 600 lbs 4.00 to 8.00 lower. Slaughter cows 8.00 10.00 higher.

FEEDER STEERS:
Medium and Large 1

300-400 lbs.	217.50-222.00
400-500 lbs.	203.00-230.00
500-600 lbs.	190.00-215.00
600-700 lbs.	162.00-188.00
700-750 lbs.	151.00-158.50

FEEDER HEIFERS:
Medium and Large 1

300-400 lbs.	179.00-195.50
400-500 lbs.	171.00-195.00
500-600 lbs.	150.00-182.00
600-700 lbs.	140.50-155.00
700-800 lbs.	131.00-143.00

SLAUGHTER BULLS: Yield Grade 1-2 1355-2485 lbs 100.50-109.00, high dressing couple 120.00-128.00, low dressing few 70.00-95.00

SLAUGHTER COWS: Breaking and Boning (70-85% lean) 78.50-88.50; high dressing 88.50-96.50; low dressing 71.50-79.00. Lean (85-90%) 66.50-79.50

BRED COWS: Medium and Large 1-2 2-8 yrs 1041-1288 lbs 2nd to 3rd stage 1010.00-1425.00; over 5 yrs 1202-1265 lbs 2nd to 3rd stage 950.00-1025.00 per head

COW & CALF PAIRS: Medium and Large 1-2 2-8 yrs 1135-1190 lbs with baby to 150 lb calves 1500.00-1520.00 per pair

MISSOURI WEEKLY DIRECT SLAUGHTER CATTLE REPORT 03/04/22

Weekly Receipts: 600 Week ago: 240 Year ago: 280

Trading as of Friday morning: moderate with flat dressed sales inactive and grid dressed sales 4.00 lower than two weeks ago.

LIVE STEERS & HEIFERS: Scarce

DRESSED STEERS & HEIFERS: Scarce

GRADE AND WEIGHT (Grid): 8 loads Wed 228.00; 7 loads Fri morning 228.00

NATIONAL DIRECT DELIVERED FEEDER PIG REPORT

03/04/22 Receipts: 62,799 Week ago: 87,315 Year Ago: 76,780 Receipts include 55% formulated prices. Early weaned pigs 10-12 lbs. basis: Formula 39.65-92.17, weighted average 64.92. Cash 68.00-98.00, weighted average 84.90. Feeder pigs 40 pounds basis: Cash 100.00-120.00, weighted average 115.85

NATIONAL DAILY DIRECT PRIOR DAY HOG REPORTS FOR 03/04/22

BARROWS AND GILTS (Carcass Basis): 4720 head Base Carcass Price, 89.00-105.00, weighted average 94.75

SOWS (Live Basis): 7872 head
300-500 lbs. 42.25-88.50
Over 500 lbs. 72.98-88.50

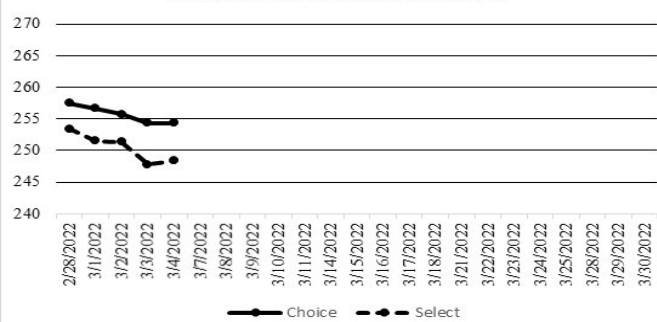
WHOLESALE FEEDSTUFFS PRICES 03/04/22
(DOLLARS PER TON-BULK BASIS)

Area	Soybean Hulls - Pellets	Soybean Meal 48% Solvent	Corn Gluten Pellets	Wheat Middlings
Kansas City	165.00	467.40	275.00	235.00
St. Louis	N/A	N/A	N/A	190.67

NATIONAL BOXED BEEF CUTOUT/BOXED BEEF CUTS

Date	Choice	Select	Total Loads
02/28	257.51	253.41	85
03/01	256.68	251.52	144
03/02	255.72	251.34	145
03/03	254.35	247.79	153
03/04	254.33	248.41	112
5 Day Simple Average	255.72	250.49	

Boxed Beef Cuts March 2022



Missouri Weekly Sheep/Goat Auction Summary 03/04/22

Receipts: 1017 Week Ago: 727 Last Year: 568
(All prices CWT unless noted.)

SHEEP: Slaughter lambs woolled and shorn Choice and Prime 1-3 pkg 83 lbs 325.00. Hair Choice and Prime 1-3 pkg 29 lbs 345.00; 30-40 lbs 365.00-380.00; 50-60 lbs 350.00-360.00; 60-70 lbs 345.00-380.00; pkg 98 lbs 340.00. Choice 1-3 20-30 lbs 305.00-310.00; 30-40 lbs 325.00-340.00; 40-50 lbs 330.00-355.00; 50-60 lbs 320.00-340.00; 60-70 lbs 290.00-340.00; 70-80 lbs 280.00-327.50; 80-90 lbs 285.00-300.00; pkg 115 lbs 290.00. Good 1-2 pkg 26 lbs 220.00; pkg 90 lbs 205.00. Slaughter ewes Good 2-3 120-145 lbs 185.00-210.00. Utility and Good 1-3 125-145 lbs 125.00-140.00. Hair Good 2-3 70-80 lbs 205.00-225.00; 80-90 lbs 190.00-225.00; 100-125 lbs 180.00-260.00. Utility and Good 1-3 70-80 lbs 160.00-180.00; 80-90 lbs 155.00-180.00; 90-100 lbs 155.00-170.00; 100-135 lbs 145.00-170.00; 150-180 lbs 135.00-165.00. Cull and Utility 1-2 pkg 88 lbs 135.00. Slaughter bucks 1-2 few 210-235 lbs 150.00-215.00. Hair bucks 1-2 pkg 94 lbs 170.00; 115-245 lbs 150.00-250.00; 165-190 lbs 150.00-185.00. Families Small and Medium 1-2 2-4 yrs 90-110 lbs with baby to 20 lb lambs 250.00-360.00 per family.

GOATS: Feeder kids Selection 1 20-30 lbs 440.00-475.00; 30-40 lbs 350.00-435.00; 40-50 lbs 370.00-420.00, replacements 450.00-510.00. Selection 2 20-30 lbs 305.00-365.00; 30-40 lbs 275.00-335.00; 40-50 lbs 270.00-365.00. Selection 3 pkg 25 lbs 240.00; 30-40 lbs 210.00-250.00; 40-50 lbs 255.00-260.00. Slaughter kids Selection 1 50-60 lbs 360.00-405.00; 60-70 lbs 380.00-392.50; 17 hd 70 lbs 370.00. Selection 2 50-70 lbs 290.00-355.00; 70-80 lbs 295.00-325.00; 80-90 lbs 300.00-315.00. Selection 3 55 lbs 230.00-240.00; 60-70 lbs 200.00-270.00. Slaughter nannies/does Selection 1-2 pkg 60 lbs 260.00; 70-80 lbs 185.00-300.00; 80-90 lbs 180.00-247.50; 90-100 lbs 170.00-240.00; 100-140 lbs 170.00-265.00. Slaughter bucks/billies Selection 1-2 few 90-100 lbs 135.00-235.00; 100-145 lbs 162.50-240.00; 150-195 lbs 170.00-245.00. Wethers Selection 2 pkg 65 lbs 270.00; pkg 120 lbs 190.00. Wether kids Selection 1 pkg 53 lbs 370.00. Selection 3 13 hd 63 lbs 150.00. Families Selection 1-2 2-4 yrs 80-98 lbs with baby to 20 lb lambs 450.00-645.00; 4-6 yrs 80-100 lbs with baby to 20 lb lambs 260.00-435.00 per family.

Explanatory Notes: Stage - Represents estimated lambing/kidding period (Open, Exposed, Bred, Fall = Sep-Nov, Win = Dec-Feb, Spr = Mar-May, Sum=Jun-Aug

WEEKLY COMMODITY GRAIN FUTURES TRENDS

Compared to last Friday, Soybeans 0.32 to 0.86 higher, Wheat 1.45 to 5.05 higher, Corn 0.50 to 0.99 higher, KC Wheat 1.80 to 3.23 higher, Soybean Meal 12.50 to 20.60 higher.

Daily Grain Futures Closes

	Mon.	Tues.	Wed.	Thu.	Fri.
Soybeans					
Mar	1644 1/4	1705 1/2	1677 1/2	1680 1/4	1676 1/4
May	1636 3/4	1690	1663	1667 3/4	1660 1/2
Jul	1616 1/2	1662 3/4	1634	1632 3/4	1633
Aug	1573	1616	1585 1/2	1577 1/2	1568 1/4
Sep	1487	1530 1/2	1503 1/4	1497	1490 1/2
Wheat					
Mar	928	1001 3/4	1058 1/2	1289	1348
May	934	984	1059	1134	1209
Jul	917	967	1041 1/4	1116 1/4	1175 1/4
Sep	904 3/4	948 3/4	955 3/4	1030 3/4	1063
Dec	899 1/2	932 1/2	892	965 3/4	980
Corn					
Mar	697 1/2	739 3/4	739	751 1/4	756 1/2
May	690 3/4	725 3/4	725	747 3/4	754 1/4
Jul	677	707 3/4	693 3/4	703 1/2	721 1/4
Sep	622 1/4	644 1/4	627 1/2	631 3/4	661 1/2
Dec	607 1/4	624 3/4	609 1/4	612	629 1/2
KC Wheat					
Mar	954 1/4	1012	1073 1/2	1140 1/4	1200 3/4
May	953	1003	1075 1/4	1150 1/4	1214 1/2
Jul	940 3/4	990 3/4	1058	1133	1174 1/2
Sep	932 3/4	982 3/4	995	1070	1116 1/2
Dec	928 1/2	978 1/2	941	1016	1057 1/4
SB Meal					
Mar	454.90	463.70	457.70	461.40	468.90
May	446.30	454.30	448.00	453.40	460.40
Jul	442.50	450.10	442.50	446.50	454.30
Aug	430.30	437.80	429.90	431.80	439.80
Sep	416.40	424.30	418.10	419.50	427.90

WEEKLY COMMODITY FUTURES TRENDS

Compared to last Friday, Live Cattle 0.82 to 6.15 lower, Lean Hogs 2.07 to 3.22 lower, Feeder Cattle 5.55 to 8.25 lower.

Daily Futures Closes

	Mon.	Tues.	Wed.	Thu.	Fri.
Cattle					
Feb	140.50	—	—	—	—
Apr	141.42	140.52	140.10	138.35	135.77
Jun	137.70	137.05	136.50	135.15	132.52
Aug	137.15	137.07	136.70	135.65	134.15
Oct	142.70	143.05	143.55	142.85	141.62
Lean Hogs					
Apr	103.50	106.20	106.30	105.20	100.45
May	107.65	110.87	111.02	110.50	105.75
Jun	113.42	116.77	116.45	116.50	111.75
Jul	112.97	116.02	115.60	115.42	110.70
Aug	111.47	114.60	113.55	113.42	109.72
Fdr Cat					
Mar	157.72	156.27	158.30	156.35	153.12
Apr	162.00	159.80	163.00	160.52	157.25
May	167.80	165.25	168.00	165.50	162.35
Aug	180.07	178.07	180.32	178.72	176.10
Sep	182.25	180.62	182.85	181.52	179.25
Milk					
Feb	20.92	—	—	—	—
Mar	22.05	22.26	22.24	22.43	22.55
Apr	22.75	23.17	23.05	23.44	23.68

WEEKLY LIVESTOCK SLAUGHTER 03/05/22

	Cattle	Hogs	Sheep
Week to Date:	658,000	2,427,000	32,000
Last Week:	647,000	2,496,000	28,000
Last Year:	666,000	2,557,000	40,000

Missouri Weekly Cattle Auction Summary 3/07/22

Receipts: 26,687 Week ago: 24,869 Year ago: 45,203

Compared to last week, feeders under 600 lbs. sold steady to 4.00 higher and those over 600 lbs. were uneven from 2.00 lower to 2.00 higher. Locally markets were very mixed this week. Reporters quoted trends that reached from 8.00 lower to 15.00 higher as uncertainty and volatility has found its way into the cattle markets. Although the grain markets have been a roller coaster ride that would make even the strongest stomach turn over the last few weeks most of that craziness had stayed out of the local auction barns. Lighter weight calves that will soon be put out on green pastures and spend the summer grazing continue to find the best demand as optimistic buyers focused on fundamentals hope time will allow these calves to make a profit come late summer or early fall. Heavier weights that will have a diet of more corn however found some pressure. Cash corn prices were only a few cents from 8.00 one day this week and although futures prices a few months out aren't at that level Sept. still closed well into the mid 6.00 area on Friday. Erasers have pretty much just ignited and burnt up as potential owners try to figure and refigure what will and won't possibly make a profit. Grains, fertilizer, fuel, crude oil, even ag chemicals have all set or very close to setting record high prices while the cow calf guy knows the trickle is real slow and prices at the auctions are a long ways from the records set back in 2014. Boxed beef cutouts continue to fall which is partly seasonal as there grills are cold. Choice closed on Friday at 254.33, down 3.94 and select at 248.41, down 7.00 compared last Friday. Feedlot sales as of the Friday afternoon report were just under 75K head of negotiated sales for the week. Live sales were mostly around 140.00 and dressed sales mostly 224.00-225.00 giving back some of the ground that had been gained. The Missouri Stocker Formula consist of 5879 head with a weighted average weight of 547.07 and a price value of 194.01, 0.67 higher than last week.

MISSOURI GRAIN WEEKLY TRENDS

Compared to last Friday, Soybeans 0.39 to 0.73 higher, Wheat 2.04 to 2.28 higher, Corn 0.65 to 0.80 higher, Sorghum 0.45 to 0.64 higher.

Area	#1 Soybeans	#2 Soft Wheat	#2 Corn	#2 Grain Sorghum
Kansas City				
Friday**	15.75-15.85	8.20	6.56-6.61	6.66
Monday	16.27-16.37	8.94	6.91-6.96	7.01
Tuesday	16.80-16.85	9.44	7.26-7.31	7.36
Wednesday	16.48-16.58	10.19	7.22	7.04
Thursday	16.33-16.58	10.16	7.14-7.19	7.14
Friday	16.38-16.48	10.48	7.21-7.26	7.11
St. Louis				
Friday**	16.26	8.37-8.67	6.92-6.94	6.30-6.40
Monday	16.80-16.83	9.22-9.41	7.31-7.34	6.68-6.78
Tuesday	17.35-17.42	9.68-9.91	7.70-7.74	6.96
Wednesday	17.08-17.17	10.66	7.69-7.73	6.95
Thursday	17.05-17.20	10.38	7.86-7.96	7.18
Friday	16.65-16.75	10.70	7.64-7.74	6.94
Central				
Friday**	15.75-15.90	—	6.51-6.60	—
Monday	16.27-16.37	—	6.86	—
Tuesday	16.80-16.90	—	7.21	—
Wednesday	16.53-16.63	—	7.20	—
Thursday	16.53-16.58	—	7.33	—
Friday	16.03-16.28	—	7.06-7.11	—
S.E. MO				
Friday**	16.18-16.20	—	6.85-6.87	—
Monday	16.74-16.75	—	7.23-7.28	—
Tuesday	17.20-17.32	—	7.62-7.66	—
Wednesday	16.88-17.05	—	7.63-7.65	—
Thursday	16.68-17.08	—	7.58-7.86	—
Friday	16.73-16.86	—	7.49-7.74	—

(PRICES PER BUSHEL) *NEW CROP **PREVIOUS WEEK'S PRICES
Most locations not providing cash wheat bids at this time, due to temporary transportation issues.

Afternoon National Slaughter Cattle Review for 03/04/22

Thus far for Friday negotiated cash trading has been mostly inactive on light demand in all major feeding regions. Not enough purchases for a market trend. The last reported market in the Southern Plains was on Wednesday with live purchases at 140.00. In Nebraska on Wednesday live and dressed purchases traded at 140.00 and from 224.00-225.00, respectively. in the Western Cornbelt on Thursday live and dressed purchases traded at 143.00 and 224.00.

Negotiated Cash Sales:					
Confirmed:	2736	Week Ago:	6594	Year Ago:	9775
Week to date:	74,767	Week Ago:	65,567	Year Ago:	76,489
Live Basis		Steers		Heifers	
Over 80% Choice		138.00-140.00, avg 139.00		138.00	
65-80% Choice		138.00		-	
35-65% Choice		-		-	
0-35% Choice		-		-	
Total All Grades		138.00-140.00, avg 138.95		138.00	
Dressed Basis					
Over 80% Choice		221.00-222.00, avg 221.20		-	
65-80% Choice		-		-	
35-65% Choice		-		-	
0-35% Choice		-		-	
Total All Grades		221.00-222.00, avg 221.20		-	

MISSOURI WEEKLY HAY SUMMARY 03/03/22

March arrived like a lamb this week and although there was another batch of winter weather late last week, the forecast, which had no winter weather predictions for at least another week was much more exciting to talk about. Kansas City broke a 134 year record on Wednesday, as temperatures were officially recorded at 84 degrees. It would be highly unlikely that there will not be a few more freezes, but meteorologically, spring has arrived. Frost is leaving the ground in some areas making for a lot of mud, but farmers will soon be looking for dry spots to spread fertilizer. Several reports of farmers that are choosing to forgo that or spread much less especially on pastures this year, due to the extremely high price levels. For those truly in the business of making hay, and not just selling surplus however, this becomes a much less viable option. Hay supplies are moderate, demand is light to moderate and hay prices mostly steady. The Missouri Department of Agriculture has a hay directory visit <http://mda.mo.gov/abd/haydirectory/> for listings of hay <http://agebb.missouri.edu/haylst/>

- Alfalfa - Supreme 200.00-250.00, small square 8.00-12.00 per bale
- Alfalfa - Premium 160.00-200.00
- Alfalfa - Good 120.00-160.00, small square 5.00-9.00 per bale
- Alfalfa - Fair 100.00-125.00
- Alfalfa/grass mix - Good/Premium small square 6.00-8.00 per bale
- Mixed grass - Good/Premium 80.00-140.00
- Mixed grass - Fair/Good 60.00-100.00, small square 4.00-6.00 per bale
- Mixed grass - Fair 25.00-55.00 per large round bale
- Wheat straw - 4.00-6.00 per small square bale