

# Weekly Market Summary

Published by:  
**Missouri Department of Agriculture**  
**Ag Business Development Division**  
**Market News Program**



Chris Chinn, Director  
 Davin Althoff, Division Director  
 Tony Hancock, Editor  
<http://www.ams.usda.gov/marketnews.htm>  
<http://www.ams.usda.gov/marketnews.htm>

Michael L. Parson, Governor

Volume XLII, Number 11 ♦ P.O. Box 630, Jefferson City, MO 65102 ♦ (573) 751-4211 ♦ Monday, March 21, 2022

## MISSOURI WEEKLY FEEDER CATTLE WEIGHTED AVERAGE REPORT

Receipts: 25,523 Week ago: 30,443 Year ago: 21,932  
 Steers and Heifers Medium and Large 1—Weighted average weights and prices

### STEERS: Medium and Large 1

282 lbs. 210.71	474 lbs. 205.99	671 lbs. 171.70	864 lbs. 150.81
330 lbs. 214.09	528 lbs. 199.20	717 lbs. 163.14	903 lbs. 146.26
379 lbs. 209.16	569 lbs. 192.65	771 lbs. 152.53	972 lbs. 138.23
428 lbs. 210.86	627 lbs. 180.30	828 lbs. 151.96	

### HEIFERS: Medium and Large 1

279 lbs. 165.47	472 lbs. 169.78	666 lbs. 154.30	854 lbs. 135.19
327 lbs. 176.25	525 lbs. 163.13	731 lbs. 142.47	911 lbs. 131.19
376 lbs. 177.18	574 lbs. 158.70	767 lbs. 143.15	1022 lbs. 124.50
424 lbs. 173.42	629 lbs. 158.71	815 lbs. 136.68	

### Missouri Steer (Heifer) Stocker Formula for 3/21/2022

Monday's Missouri Stocker Formula consists of **5695 (5517)** head with a weighted average weight of **540.98 (533.17)** lbs. and a price value of **189.55 (159.44)**, 2.74 higher (4.33 higher) than last Monday.

This a rolling seven day calculated weighted value which combines all Feeder Steers reported by MDA/USDA Market News Service weighing from 400-649 lbs. in the Medium and Large 1 and Medium and Large 1-2 frame and muscle classifications, including all comment cattle except Brahman X. Heifer values are in parentheses.

### SOUTH CENTRAL MISSOURI WEEKLY SUMMARY

(West Plains, Ava)

Receipts: 5107 Week ago: 5802 Year Ago: 4473  
 Compared to last week, steers and heifers steady to 5.00 higher. Slaughter cows 3.00 to 5.00 higher. Slaughter bulls steady to 7.00 higher.

#### STEERS:

Medium and Large 1

300-400 lbs.	200.00-220.00
400-500 lbs.	197.50-225.00
500-600 lbs.	184.00-210.00
600-700 lbs.	161.00-189.00
700-800 lbs.	146.00-166.00
800-900 lbs.	144.00-149.00

#### Holsteins

Large 3

Pkg 611 lbs. 110.00

#### HEIFERS:

Medium and Large 1

300-400 lbs.	169.00-178.00
400-500 lbs.	164.00-183.00
500-600 lbs.	149.00-168.00
600-700 lbs.	145.00-154.00
700-750 lbs.	136.00-144.00

SLAUGHTER COWS: Breaking and Boning (70-85% lean) 77.00-91.00, high dressing 90.00-100.00; low dressing 63.00-78.00. Lean (85-90%) 65.00-80.00

SLAUGHTER BULLS: Yield Grade 1-2 1220-2290 lbs 97.50-119.00; high dressing 111.00-132.00; low dressing 73.00-103.00

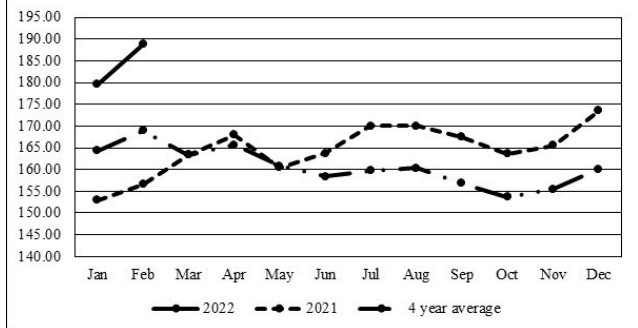
BRED COWS: Medium and Large 1 2-8 yrs 1140-1388 lbs 2nd to 3rd stage 1200.00-1450.00, 1st stage 1110.00. Medium and Large 1-2 2-8 yrs 825-1232 lbs 2nd to 3rd stage 875.00-1250.00, 1st stage 800.00-1150.00 per head

BRED HEIFERS: Medium and Large 1-2 705-1135 lbs 2nd to 3rd stage 700.00-1000.00 per head

COW & CALF PAIRS: Medium and Large 1 2-8 yrs 1321-1432 lbs with baby to 300 lb calves 1500.00-1750.00. Medium and Large 1-2 2-8 yrs 960-1360 lbs with baby to 300 lb calves 1150.00-1575.00 per pair

The Weekly Market Summary, as well as historical summaries, are available on our website <https://agmarketnews.mo.gov/summaries>  
 Market News Hotline: 1-573-522-9244

### Missouri Stocker Formula - Steers



\*Graph is updated the first Monday of each month.

### SOUTHWEST MISSOURI WEEKLY SUMMARY

(Joplin and Springfield)

Receipts: 9444 Week Ago: 12,457 Year ago: 7966  
 Compared to last week, steers and heifers steady to 5.00 higher, spots up to 10.00 higher. Slaughter cows steady to 5.00 higher. Slaughter bulls steady to 2.00 higher.

#### STEERS:

Medium and Large 1

300-400 lbs.	200.00-225.00
400-500 lbs.	190.00-216.00
500-600 lbs.	177.00-212.00
600-700 lbs.	159.00-184.00
700-800 lbs.	146.00-163.75
800-900 lbs.	149.25-156.25
900-1000 lbs.	138.00-143.00

#### HOLSTEINS:

Large 3

Scarce

#### HEIFERS:

Medium and Large 1

300-400 lbs.	170.00-182.50
400-500 lbs.	159.00-183.00
500-600 lbs.	148.00-169.50
600-700 lbs.	145.00-158.00
700-800 lbs.	136.00-144.00
800-900 lbs.	135.00-138.00
33 hd 909 lbs.	13150
14 hd 1022 lbs.	124.50

SLAUGHTER COWS: Breaking and Boning (70-85% lean) 75.00-89.00, high dressing 84.00-99.00; low dressing 61.00-79.50. Lean (85-90%) 62.00-77.00

SLAUGHTER BULLS: Yield Grade 1-2 1210-2765 lbs 95.00-111.50; high dressing 109.00-128.00; low dressing 80.00-96.00

BRED COWS: Medium and Large 1 2-8 yrs 970-1325 lbs 2nd to 3rd stage 1100.00-1825.00, 1st stage 1125.00-1225.00; over 8 yrs 1058-1350 lbs 2nd to 3rd stage 1050.00-1175.00 per head. Medium and Large 1-2 2-8 yrs 890-1380 lbs 2nd to 3rd stage 750.00-1485.00, fancy 1600.00, 1st stage 750.00-1125.00; over 8 yrs 940-1338 lbs 2nd to 3rd stage 660.00-1075.00 per head

COW & CALF PAIRS: Medium and Large 1 2-8 yrs 1001-1420 lbs with baby to 300 lb calves 1575.00-2200.00, 2-8 yrs 1433 lbs rebred 1st to 2nd stage with over 300 lb calves 1760.00 per pair. Medium and Large 1-2 2-8 yrs 875-1580 lbs with baby to over 300 lb calves 1100.00-1600.00; 2-8 yrs 1115-1690 lbs rebred 1st to 2nd stage with 150 lb to over 300 lb calves 1275.00-1725.00 per pair

**WEST CENTRAL MISSOURI WEEKLY SUMMARY**

(Kingsville, Windsor, Butler)

Receipts: 5831 Week ago: 5324 Year ago: 3360

Compared to last week, steers and heifers firm to 8.00 higher. Slaughter cows firm to 5.00 higher.

**FEEDER STEERS:**

Medium and Large 1

400-500 lbs. 189.00-219.50  
500-600 lbs. 183.00-214.50  
600-700 lbs. 159.50-192.00  
700-800 lbs. 145.00-170.85  
800-900 lbs. 146.75-156.10

**FEEDER HEIFERS:**

Medium and Large 1

300-400 lbs. 169.00-190.00  
400-500 lbs. 159.50-187.00  
500-600 lbs. 150.50-181.25  
600-700 lbs. 145.00-170.75  
700-800 lbs. 140.00-151.50  
800-900 lbs. 124.00-140.00

**SLAUGHTER BULLS:** Yield

Grade 1-2 1220-2145 lbs 97.50-115.00; high dressing 112.00-125.00; low dressing 90.00-100.00

**SLAUGHTER COWS:** Breaking

and Boning (70-85% lean) 75.00-94.00, high dressing 85.00-99.50. Lean (85-90%) 61.00-77.00

**BRED COWS:** Medium and Large

1-2 5-8 yrs pkg 1228 lbs 2nd to 3rd stage 1010.00; over 8 yrs pkg 1103 lbs 2nd to 3rd stage 835.00 per head

**COW & CALF PAIRS:** Scarce

**NORTHEAST MISSOURI WEEKLY SUMMARY**

(Bowling Green, Kingdom City, Palmyra)

Receipts: 2959 Week ago: 6747 Year ago: 3765

Compared to last week, steers under 700 lbs steady to 5.00 higher, 700-750 lbs steady to 3.00 lower, over 750 lbs higher undertone. Heifers under 600 lbs mostly 10.00 to 20.00 higher, over 600 lbs higher undertone. Slaughter cows steady to 3.00 higher.

**FEEDER STEERS:**

Medium and Large 1

400-500 lbs. 197.00-211.00  
500-600 lbs. 190.00-206.75  
600-700 lbs. 164.75-191.00  
700-800 lbs. 154.25-158.50  
800-900 lbs. 147.35-152.75  
58 hd 900 lbs. 148.00

**FEEDER HEIFERS:**

Medium and Large 1

300-350 lbs. 179.00-183.00  
400-500 lbs. 177.00-193.00  
500-600 lbs. 168.00-175.50  
600-700 lbs. 149.00-164.00  
Pkg 827 lbs. 139.00

**SLAUGHTER BULLS:** Yield

Grade 1-2 1205-2495 lbs 100.00-111.50; high dressing 110.00-134.00; low dressing 90.50-98.00

**SLAUGHTER COWS:** Breaking

and Boning, (70-85% lean) 73.00-86.00; high dressing 78.00-94.00; low dressing 59.00-76.00. Lean (85-90%) 63.00-74.50

**SLAUGHTER STEERS:** Choice 2

-3 136.50-142.50. Select 1-2 119.00-130.00.

**SLAUGHTER HEIFERS:** Choice

2-3 134.00-143.50. Select 1-2 136.50

**BRED COWS:** Medium and Large

1 2-8 yrs 1200-1483 lbs 3rd stage 2050.00-2075.00. Medium and Large 1-2 2-8 yrs 1160-1374 lbs 2nd to 3rd stage 1375.00-1580.00, 1st stage 1120.00-1350.00 per head

**NORTH CENTRAL MISSOURI WEEKLY SUMMARY**

(Macon, Unionville, Green City, New Cambria)

Receipts: 3351 Week ago: 2228 Year ago: 2788

Compared to last week, steers and heifers mostly steady to 5.00 higher, some yearling steers steady to 3.00 lower on comparable sales. Slaughter cows steady to 3.00 higher.

**FEEDER STEERS:**

Medium and Large 1

400-500 lbs. 205.00-226.00  
500-600 lbs. 187.00-205.00  
600-700 lbs. 164.25-190.50  
700-800 lbs. 146.75-169.00  
800-850 lbs. 141.75-145.25

**FEEDER HEIFERS:**

Medium and Large 1

400-500 lbs. 165.00-185.00  
500-600 lbs. 158.00-188.50  
600-700 lbs. 159.00-174.50  
700-800 lbs. 140.75-159.00  
Pkg 922 lbs. 130.25

**SLAUGHTER BULLS:** Yield

Grade 1-2 1365-2325 lbs 98.50-112.00; high dressing 112.50-115.50; low dressing 85.00-93.50

**SLAUGHTER COWS:** Breaking

and Boning, (70-85% lean) 69.00-82.00; high dressing 78.00-91.00. Lean (85-90%) 58.00-69.50

**BRED COWS:** Scarce

**COW & CALF PAIRS:** Scarce

**SOUTHEAST MISSOURI WEEKLY SUMMARY**

(Jackson and Farmington)

Receipts: 2392 Week ago: 1529 Year ago: 1280

Compared to last week, steers and heifers steady to 13.00 higher. Slaughter cows steady to 2.00 higher. Slaughter bulls 3.00 higher.

**FEEDER STEERS:**

Medium and Large 1

300-400 lbs. 187.00-215.00  
400-500 lbs. 180.00-209.00  
500-600 lbs. 160.00-199.00  
600-700 lbs. 140.00-177.00  
700-800 lbs. 137.00-155.00

**FEEDER HEIFERS:**

Medium and Large 1

300-400 lbs. 160.00-186.00  
400-500 lbs. 147.00-182.00  
500-600 lbs. 140.00-167.00  
600-700 lbs. 130.00-152.00  
700-800 lbs. 120.00-131.00

**SLAUGHTER BULLS:** Yield

Grade 1-2 965-2220 lbs 80.00-113.00, high dressing 104.00-119.50; low dressing 75.00-82.00

**SLAUGHTER COWS:** Breaking

and Boning (75-85% lean) 61.00-82.00; high dressing 79.50-90.00. Lean (85-90% lean) 49.00-69.50

**BRED COWS:** Medium and Large

2 2-8 yrs 1110-1240 lbs 1st to 3rd stage 800.00-1110.00; over 8 yrs 1040-1180 lbs 2nd to 3rd stage 700.00-850.00 per head

**COW & CALF PAIRS:** Medium

and Large 2 2-8 yrs 1000-1100 lbs with 150 to over 300 lb calves 975.00-1500.00 per pair

**EAST CENTRAL MISSOURI WEEKLY SUMMARY**

(Cuba, Vienna)

Receipts: 2615 Week ago: 1383 Year ago: 1842

Based on limited comparisons with last week, steers and heifers under 600 lbs uneven from 5.00 lower to 12.00 higher, over 600 lbs firm undertone with few comparisons. Slaughter cows steady to 3.00 higher.

**FEEDER STEERS:**

Medium and Large 1

300-400 lbs. 226.00-231.00  
400-500 lbs. 195.00-228.00  
500-600 lbs. 178.00-218.00  
600-700 lbs. 156.00-184.00  
700-750 lbs. 158.00-170.00

**FEEDER HEIFERS:**

Medium and Large 1

300-400 lbs. 171.00-186.00  
400-500 lbs. 156.00-188.00  
500-600 lbs. 153.00-170.00  
600-700 lbs. 141.00-162.50  
700-800 lbs. 134.25-147.50

**SLAUGHTER BULLS:** Yield

Grade 1-2 1290-2260 lbs 96.50-117.50, high dressing 117.00-120.00, low dressing 75.00-101.00

**SLAUGHTER COWS:** Breaking

and Boning (70-85% lean) 78.00-88.50; high dressing 86.50-92.50; low dressing 68.00-76.50. Lean (85-90%) 62.00-76.00

**BRED COWS:** Medium and Large

1-2 5-8 yrs 1378-1380 lbs 2nd to 3rd stage 1100.00-1275.00 per head

**COW & CALF PAIRS:** Scarce

**MISSOURI WEEKLY DIRECT SLAUGHTER CATTLE REPORT 03/18/22**

Weekly Receipts: 240 Week ago: 360 Year ago: 420

Trading as of Friday morning: light to moderate with flat dressed sales mostly 2.00 higher and grid dressed sales 2.00 higher.

**LIVE STEERS & HEIFERS:**

Scarce

**DRESSED STEERS & HEIFERS:**

4 loads Fri morn flat 222.00

**GRADE AND WEIGHT (Grid):** 2 loads Fri morn 226.00

**NATIONAL DIRECT DELIVERED FEEDER PIG REPORT**

03/18/22 Receipts: 90,144 Week ago: 80,533 Year Ago: 81,846 Receipts include 40% formulated prices. Early weaned pigs 10-12 lbs. basis: Formula 39.67-86.73, weighted average 54.40. Cash 55.00-95.00, weighted average 79.99. Feeder pigs 40 pounds basis: Cash 106.00-134.00, weighted average 117.87

**NATIONAL DAILY DIRECT PRIOR DAY HOG REPORTS FOR 03/21/22**

**BARROWS AND GILTS (Carcass Basis):** 4354 head

Base Carcass Price, 98.00-112.00, weighted average 103.82

**SOWS (Live Basis):** 7170 head

300-500 lbs. 66.00-97.00  
Over 500 lbs. 72.00-99.00

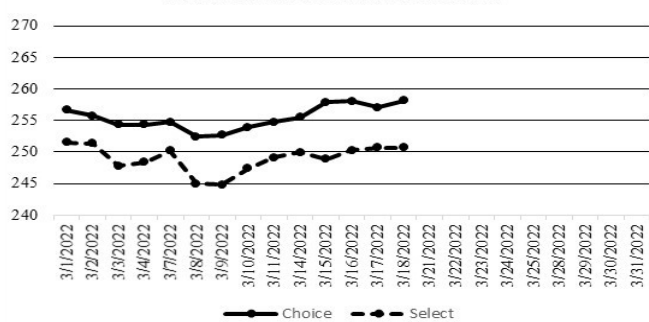
**WHOLESALE FEEDSTUFFS PRICES 03/18/22**  
(DOLLARS PER TON-BULK BASIS)

Area	Soybean Hulls - Pellets	Soybean Meal 48% Solvent	Corn Gluten Pellets	Wheat Middlings
Kansas City	280.00	492.00	322.00	226.67
St. Louis	N/A	N/A	310.00	195.00

**NATIONAL BOXED BEEF CUTOUT/BOXED BEEF CUTS**

Date	Choice	Select	Total Loads
03/14	255.51	249.94	83
03/15	257.90	248.84	135
03/16	258.08	250.27	123
03/17	257.05	250.68	148
03/18	258.16	250.65	95
<b>5 Day Simple Average</b>	257.34	250.08	

Boxed Beef Cuts March 2022



**Missouri Weekly Sheep/Goat Auction Summary 03/18/22**

Receipts: 1228 Week Ago: 240 Last Year: 602  
(All prices CWT unless noted.)

Sheep: Feeder lambs Medium and Large 1-2 30-40 lbs 317.00-345.00. Slaughter lambs woolled and shorn Choice 1-3 pkg 132 lbs 150.00. Hair Choice and Prime 1-2 40-50 lbs 335.00-375.00; 50-60 lbs 350.00-370.00; 60-70 lbs 350.00-370.00; 70-80 lbs 340.00-350.00. Choice and Prime 1-3 20-30 lbs 315.00-325.00; 30-40 lbs 305.00-350.00; 40-50 lbs 285.00-335.00; 50-60 lbs 280.00-322.50; 60-70 lbs 290.00-305.00; 22 hd 70 lbs 300.00. Choice 1-2 40-50 lbs 337.00-347.00; pkg 54 lbs 305.00. Choice 1-3 pkg 27 lbs 250.00; pkg 43 lbs 270.00; 20 hd 55 lbs 265.00; 13 hd 78 lbs 280.00; pkg 90 lbs 270.00. Good and Choice 1-3 pkg 61 lbs 220.00. Good 1-2 pkg 44 lbs 210.00; pkg 62 lbs 185.00. Slaughter ewes Good 2-3 110-150 lbs 145.00-200.00. Utility and Good 1-3 120-145 lbs 130.00-135.00; 150-200 lbs 120.00-140.00; pkg 218 lbs 105.00. Utility and Good 2 60-90 lbs 150.00-166.00; 100-145 lbs 135.00-170.00; 150-200 lbs 125.00-133.00. Utility and Good 2-3 150-220 lbs 110.00-125.00. Hair Good 2-3 80-90 lbs 180.00; 100-135 lbs 175.00-275.00. Utility and Good 1-3 pkg 78 lbs 165.00; pkg 97 lbs 165.00; 100-150 lbs 130.00-165.00; 165-175 lbs 120.00-125.00. Cull and Utility 1-2 few 85 lbs 65.00-105.00. Slaughter bucks 1-2 150-310 lbs 110.00-140.00. Replacement ewes hair Medium and Large 1-2 2-4 yrs 90 lbs 275 per head. Medium 2 2-4 yrs 60 lbs 170.00 per head.

GOATS: Feeder kids Selection 1 pkg 28 lbs 480.00; 30-40 lbs 370.00-450.00; 40-50 lbs 365.00-410.00. Selection 1-2 pkg 38 lbs 350.00. Selection 2 pkg 29 lbs 345.00; 30-40 lbs 265.00-355.00; 40-50 lbs 290.00-320.00. Selection 3 30-50 lbs 235.00-240.00, pygmies 230.00-245.00. Slaughter kids Selection 1 50-60 lbs 370.00-410.00; 60-70 lbs 350.00-400.00. Selection 1-2 40-50 lbs 350.00-385.00; 50-65 lbs 395.00. Slaughter nannies/does Selection 1-2 100-145 lbs 165.00-265.00. Slaughter bucks/billies Selection 1-2 85 lbs 160.00-225.00; 90-100 lbs 200.00-240.00; 100-145 lbs 150.00-225.00. Replacement nannies/does Selection 1 40-70 lbs 410.00-440.00. Families Selection 1-2 2-4 yrs 85-95 lbs with baby to 20 lb lambs 225.00-420.00 per family

Explanatory Notes: Stage - Represents estimated lambing/kidding period (Open, Exposed, Bred, Fall = Sep-Nov, Win = Dec-Feb, Spr = Mar-May, Sum=Jun-Aug

**WEEKLY COMMODITY GRAIN FUTURES TRENDS**

Compared to last Friday, Soybeans 0.06 to 0.25 lower, Wheat 0.33 to 0.47 lower, Corn 0.06 to 0.21 lower, KC Wheat 0.19 to 0.33 lower, Soybean Meal uneven from 7.10 lower to 3.40 higher.

Daily Grain Futures Closes

	Mon.	Tues.	Wed.	Thu.	Fri.
<b>Soybeans</b>					
Mar	1687 1/4	—	—	—	—
May	1670 1/2	1658 3/4	1649 1/4	1668 1/2	1668
Jul	1646 3/4	1635 3/4	1626	1647 1/4	1645 3/4
Aug	1604	1594 1/4	1586 1/4	1604 1/4	1602 1/4
Sep	1525 3/4	1516	1508 1/4	1522 3/4	1519 1/2
<b>Wheat</b>					
Mar	1090	—	—	—	—
May	1096 1/4	1154 1/4	1069 1/4	1098	1063 3/4
Jul	1070	1127 1/2	1042 1/2	1076	1044 3/4
Sep	1029	1072	991 3/4	1030 3/4	1005 3/4
Dec	987 3/4	1017 1/4	947 3/4	987 1/2	967
<b>Corn</b>					
Mar	728 1/4	—	—	—	—
May	748 1/4	758	730	754 1/2	741 3/4
Jul	718 1/2	723 1/4	697	718 3/4	712 1/2
Sep	670 3/4	670 1/4	647	667 1/2	644 3/4
Dec	652 1/2	651 1/4	629 3/4	645	645 1/2
<b>KC Wheat</b>					
Mar	1079 1/4	—	—	—	—
May	1100	1157 1/2	1072 1/2	1092 1/4	1070 1/2
Jul	1085 1/2	1143 1/2	1058 1/2	1083 1/4	1062
Sep	1067 3/4	1111 1/2	1034	1058 3/4	1045 3/4
Dec	1052 1/4	1081 3/4	1010	1033 1/2	1028 1/4
<b>SB Meal</b>					
Mar	521.90	—	—	—	—
May	484.30	484.00	478.00	474.10	477.00
Jul	471.10	470.10	465.70	464.50	468.00
Aug	457.70	456.10	451.80	451.50	454.60
Sep	445.30	442.60	438.60	437.40	439.80

**WEEKLY COMMODITY FUTURES TRENDS**

Compared to last Friday, Live Cattle 2.58 to 4.73 higher, Lean Hogs Apr 1.05 lower, others 1.35 to 4.77 higher, Feeder Cattle 3.82 to 5.10 higher.

Daily Futures Closes

	Mon.	Tues.	Wed.	Thu.	Fri.
<b>Cattle</b>					
Apr	140.32	140.85	139.35	139.47	140.50
Jun	135.70	136.80	135.52	135.92	137.07
Aug	136.67	137.30	136.50	136.65	137.60
Oct	144.02	144.45	143.77	143.80	144.20
Dec	149.60	149.65	149.25	149.30	149.75
<b>Lean Hogs</b>					
Apr	102.20	102.40	102.37	100.35	99.40
May	110.30	110.65	111.00	108.00	107.10
Jun	119.35	120.07	120.47	116.97	116.07
Jul	118.37	119.15	119.45	116.37	115.47
Aug	116.90	117.62	117.47	114.82	113.77
<b>Fdr Cat</b>					
Mar	155.95	156.35	157.25	156.55	157.00
Apr	162.40	162.60	162.62	161.10	162.32
May	167.45	167.30	167.27	165.87	167.45
Aug	180.42	179.92	180.37	179.30	180.70
Sep	182.92	182.55	183.00	181.87	183.07
<b>Milk</b>					
Mar	22.40	22.37	22.38	22.39	22.41
Apr	23.90	23.41	22.88	23.23	23.43
May	24.12	23.87	23.33	23.75	24.07

**WEEKLY LIVESTOCK SLAUGHTER 03/19/22**

	Cattle	Hogs	Sheep
Week to Date:	644,000	2,435,000	32,000
Last Week:	644,000	2,475,000	34,000
Last Year:	629,000	2,524,000	39,000

**Missouri Weekly Cattle Auction Summary 3/21/22**

Receipts: 25,523 Week ago: 30,443 Year ago: 21,932

Compared to last week, feeder steers and heifers sold steady to 5.00 higher, gaining back some of last week's losses. Spring officially arrived and weather conditions around the state felt very spring like with temperatures climbing into the mid 70's. The first good tint of green in showing now, even if a lot of that early green happens to be onions or henbit. The supply of feeders was moderate with very few true yearlings, which is typical for the season. Demand was moderate with those most suitable for grazing and quick weight gain seeing the best demand. Market fundamentals continue to be over shadowed by other factors mainly the unrest abroad. Analyst point too several factors all suggesting livestock markets should be at higher levels if the volatility from other sectors, due to the global uncertainty, weren't present. Boxed beef cut-out values are slowly adding some value. Choice closed on Friday at 258.16, up 3.45 and select at 250.65, up 1.54 from the previous week. The volume of feedlot sales as of the Friday afternoon report was only 68K head as feedlot managers dug in trying to get more money. Live sales were reported mostly from 138.00-142.00 and dressed sales mostly 221.00-222.00 with a few up to 225.00. The Missouri Stocker Formula consist of 5695 head with a weighted average weight of 540.98 lbs. and a price value of 189.55, 2.74 higher than a week ago. The steer/heifer spread remains unusually high at thirty dollars and some cents.

**MISSOURI GRAIN WEEKLY TRENDS**

Compared to last Friday, Soybeans steady to 0.12 lower, Wheat 0.38 to 0.39 lower, Corn 0.12 to 0.24 lower, Sorghum 0.17 to 0.21 lower.

Area	#1 Soybeans	#2 Soft Wheat	#2 Corn	#2 Grain Sorghum
<b>Kansas City</b>				
Friday**	16.51-16.66	10.20	7.39-7.49	7.19
Monday	16.47-16.62	10.04	7.29-7.39	7.09
Tuesday	16.36-16.51	10.47	7.33-7.48	7.13
Wednesday	16.26-16.41	9.67	7.07-7.22	6.87
Thursday	16.47-16.62	10.06	7.29-7.44	7.09
Friday	16.46-16.61	9.81	7.23-7.38	7.03
<b>St. Louis</b>				
Friday**	16.93-16.94	10.45	7.83-7.87	7.03
Monday	16.88-16.89	10.29	7.73-7.74	6.88
Tuesday	16.74-16.76	10.72	7.83-7.84	6.98
Wednesday	16.63-16.64	9.92	7.51-7.53	6.70
Thursday	16.83	10.31	7.76	6.95
Friday	16.82-16.84	10.06	7.63	6.82
<b>Central</b>				
Friday**	16.41-16.46	—	7.14-7.19	—
Monday	16.37-16.42	—	7.04-7.09	—
Tuesday	16.26-16.31	—	7.08-7.13	—
Wednesday	16.16-16.26	—	6.87-6.97	—
Thursday	16.37-16.47	—	7.09-7.19	—
Friday	16.36-16.46	—	7.08-7.13	—
<b>S.E. MO</b>				
Friday**	16.86-17.01	—	7.83-7.88	—
Monday	16.81-16.96	—	7.68-7.86	—
Tuesday	16.69-16.85	—	7.75-7.86	—
Wednesday	16.58-16.74	—	7.38-7.50	—
Thursday	16.78-16.94	—	7.60-7.75	—
Friday	16.74-16.93	—	7.45-7.62	—

(PRICES PER BUSHEL) \*NEW CROP \*\*PREVIOUS WEEK'S PRICES  
\*Most locations not providing cash wheat bids at this time, due to temporary transportation issues.\*

**Afternoon National Slaughter Cattle Review for 03/18/22**

So far for Friday in the Western Cornbelt negotiated cash trading has been slow on light demand. A few live purchases traded at 142.00, however not enough for a full market trend. The last reported market was on Thursday with live purchases at 140.00 and dressed purchases at 222.00. Thus far for Friday in the Southern Plains and Nebraska negotiated cash trading has been mostly inactive on light demand. Not enough purchases for a full market trend. The last reported market in these regions was on Thursday with live purchases at 138.00 and dressed purchases, in Nebraska, at 221.00.

Negotiated Cash Sales:					
Confirmed:	8890	Week Ago:	1247	Year Ago:	4532
Week to date:	68,163	Week Ago:	82,557	Year Ago:	76,996
Live Basis		Steers		Heifers	
<b>Over 80% Choice</b>		138.00-142.00, avg 140.39		138.00-142.00, avg 139.51	
<b>65-80% Choice</b>		-		-	
<b>35-65% Choice</b>		-		-	
<b>0-35% Choice</b>		-		-	
<b>Total All Grades</b>		138.00-142.00, avg 140.39		138.00-142.00, avg 139.51	
Dressed Basis					
<b>Over 80% Choice</b>		220.00-222.00, avg 220.94		221.00-222.00, avg 221.41	
<b>65-80% Choice</b>		-		-	
<b>35-65% Choice</b>		-		-	
<b>0-35% Choice</b>		-		-	
<b>Total All Grades</b>		220.00-222.00, avg 220.94		221.00-222.00, avg 221.41	

**MISSOURI WEEKLY HAY SUMMARY 03/17/22**

Although officially Spring is a few days away as of the publishing of this report the weather sure felt Spring like this week. Although there was not necessarily lines or a wait list for buggies there was enough spreading going on to be noticed in several areas around the state. A few tints of green can even be seen in some of the southern areas of the state. Along with all the other current challenges of extremely high inputs facing producers this upcoming growing season there is still over 36 percent of the state listed as abnormally dry and over 60 percent of the lower 48 still in drought status. Unlike a lot of years when many folks are trying to move any leftover surplus hay about this time of year there seems to be an overwhelming amount of farmers planning to hold everything they have in hopes of maybe not having to bale as much this year given what cost of production will be. Hay supplies are moderate, demand is light to moderate and hay prices mostly steady. The Missouri Department of Agriculture has a hay directory visit <http://mda.mo.gov/abd/haydirectory/> for listings of hay <http://agebb.missouri.edu/haylst/>

- Alfalfa - Supreme 200.00-250.00, small square 8.00-12.00 per bale
- Alfalfa - Premium 160.00-200.00
- Alfalfa - Good 120.00-160.00, small square 5.00-9.00 per bale
- Alfalfa - Fair 100.00-125.00
- Alfalfa/grass mix - Good/Premium small square 6.00-8.00 per bale
- Mixed grass - Good/Premium 80.00-140.00
- Mixed grass - Fair/Good 60.00-100.00, small square 4.00-6.00 per bale
- Mixed grass - Fair 25.00-55.00 per large round bale
- Wheat straw - 4.00-6.00 per small square bale