

# Weekly Market Summary

Published by:  
**Missouri Department of Agriculture**  
**Ag Business Development Division**  
**Market News Program**



Chris Chinn, Director  
 Jill Wood, Division Director  
 Tony Hancock, Editor  
<http://www.ams.usda.gov/marketnews.htm>  
<http://www.ams.usda.gov/marketnews.htm>

Michael L. Parson, Governor

Volume XLII, Number 20 ♦ P.O. Box 630, Jefferson City, MO 65102 ♦ (573) 751-4211 ♦ Monday, May 23, 2022

## MISSOURI WEEKLY FEEDER CATTLE WEIGHTED AVERAGE REPORT

Receipts: 28,976 Week ago: 23,609 Year ago: 24,800

Steers and Heifers Medium and Large 1—Weighted average weights and prices

### STEERS: Medium and Large 1

279 lbs. 209.54	474 lbs. 202.26	674 lbs. 170.33	890 lbs. 146.18
330 lbs. 204.57	525 lbs. 197.34	712 lbs. 162.62	912 lbs. 143.62
379 lbs. 208.57	571 lbs. 189.56	773 lbs. 156.91	975 lbs. 143.49
425 lbs. 206.81	620 lbs. 181.64	821 lbs. 153.31	

### HEIFERS: Medium and Large 1

292 lbs. 174.89	473 lbs. 169.32	677 lbs. 153.17	921 lbs. 117.00
321 lbs. 179.06	524 lbs. 164.24	717 lbs. 150.76	964 lbs. 125.19
377 lbs. 175.52	574 lbs. 156.87	771 lbs. 143.59	
427 lbs. 171.50	618 lbs. 153.40	825 lbs. 139.79	

### Missouri Steer (Heifer) Stocker Formula for 5/23/2022

Monday's Missouri Stocker Formula consists of 7550 (7075) head with a weighted average weight of 531.28 (521.43) lbs. and a price value of 188.68 (158.70), 2.225 higher (3.52 lower) than last Monday.

This a rolling seven day calculated weighted value which combines all Feeder Steers reported by MDA/USDA Market News Service weighing from 400-649 lbs. in the Medium and Large 1 and Medium and Large 1-2 frame and muscle classifications, including all comment cattle except Brahman X. Heifer values are in parentheses.

### SOUTH CENTRAL MISSOURI WEEKLY SUMMARY

(West Plains, Ava)

Receipts: 5778 Week ago: 5154 Year Ago: 5724

Compared to last week, feeders uneven from 4.00 lower to 4.00 higher, spots 8.00 higher on mid-weights. Slaughter cows and bulls steady to 2.00 higher.

#### STEERS:

Medium and Large 1

300-400 lbs.	200.00-215.00
400-500 lbs.	187.50-217.00
500-600 lbs.	185.00-206.00
600-700 lbs.	174.00-197.00
700-800 lbs.	157.00-165.00
800-900 lbs.	143.00-145.00

#### HEIFERS:

Medium and Large 1

300-400 lbs.	165.00-179.00
400-500 lbs.	160.00-175.00
500-600 lbs.	147.50-166.00
600-700 lbs.	145.00-152.00
700-800 lbs.	134.00-143.00
51 hd 964 lbs.	125.75

#### Holsteins

Large 3

Scarce

Scarce

SLAUGHTER COWS: Breaking and Boning (70-85% lean) 68.00-85.00, high dressing 79.00-99.50; low dressing 60.00-75.00. Lean (85-90%) 57.00-75.00

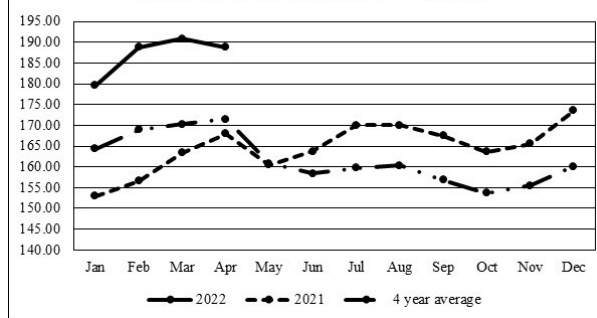
SLAUGHTER BULLS: Yield Grade 1-2 1260-2280 lbs. 95.00-110.00; high dressing 110.00-122.00; low dressing 73.00-98.00

BRED COWS: Medium and Large 1-2 2-8 yrs 979-1305 lbs 2nd to 3rd stage 1050.00-1325.00 per head.

BRED HEIFERS: Medium and Large 1-2 few 845-995 lbs 1st to 3rd stage 775.00-975.00 per head

COW & CALF PAIRS: Medium and Large 2 2-8 yrs 1052-1056 lbs with 150-300 lb calves 1175.00-1375.00; over 8 yrs 1050-1098 lbs with 150-300 lb calves 1200.00-1250.00 per pair

### Missouri Stocker Formula - Steers



\*Graph is updated the first Monday of each month.

### SOUTHWEST MISSOURI WEEKLY SUMMARY

(Joplin and Springfield)

Receipts: 9463 Week Ago: 6389 Year ago: 8195

Compared to last week, steers and heifers steady to 6.00 lower. Slaughter cows steady to 3.00 higher. Slaughter bulls steady to 6.00 higher.

#### STEERS:

Medium and Large 1

300-400 lbs.	196.00-217.50
400-500 lbs.	189.00-218.00
500-600 lbs.	173.00-201.00
600-700 lbs.	161.50-184.00
700-800 lbs.	147.00-168.00
800-850 lbs.	150.75-157.50
900-1000 lbs.	139.00-145.00

#### HOLSTEINS:

Large 3

scarce

scarce

#### HEIFERS:

Medium and Large 1

300-400 lbs.	168.00-180.00
400-500 lbs.	155.00-174.00
500-600 lbs.	149.50-167.00
600-700 lbs.	144.00-157.00
700-750 lbs.	146.00-152.75
187 hd 824 lbs.	140.00

SLAUGHTER COWS: Breaking and Boning (70-85% lean) 70.00-82.00, high dressing 79.00-93.00; low dressing 60.00-73.00. Lean (85-90%) 60.00-73.00

SLAUGHTER BULLS: Yield Grade 1-2 1285-2250 lbs. 97.00-110.00; high dressing 109.00-126.00; low dressing 80.00-93.00

BRED COWS: Medium and Large 1 2-8 yrs 1119-1375 lbs 2nd to 3rd stage 1375.00-1525.00, over 8 yrs 1111-1351 lbs 2nd to 3rd stage 1100.00-1275.00 per head. Medium and Large 1-2 2-8 yrs 1020-1350 lbs 2nd to 3rd stage 950.00-1325.00, 1st stage 875.00-1050.00; over 8 yrs 1051-1306 lbs 2nd to 3rd stage 850.00-1085.00 per head

COW & CALF PAIRS: Medium and Large 1 2-8 yrs 1100-1200 lbs with baby to over 300 lb calves 1775.00-2100.00 per pair. Medium and Large 1-2 2-8 yrs 990-1345 lbs with baby to over 300 lb calves 1175.00-1600.00 per pair

The Weekly Market Summary, as well as historical summaries, are available on our website <https://agmarketnews.mo.gov/summaries>  
 Market News Hotline: 1-573-522-9244

**WEST CENTRAL MISSOURI WEEKLY SUMMARY**

(Kingsville, Windsor, Butler)

Receipts: 5795 Week ago: 5863 Year ago: 3374

Compared to last week, steady sold steady to 5.00 higher, heifers 5.00 lower to 3.00 higher. Slaughter cows sold mostly steady to 3.00 higher.

**FEEDER STEERS:**

Medium and Large 1

400-500 lbs.	192.00-232.00
500-600 lbs.	178.50-209.00
600-700 lbs.	167.00-193.50
700-800 lbs.	155.00-174.75
800-850 lbs.	153.50-156.75

**FEEDER HEIFERS:**

Medium and Large 1

400-500 lbs.	163.00-181.50
500-600 lbs.	154.75-176.00
600-700 lbs.	140.00-173.00
700-800 lbs.	143.00-154.75

**SLAUGHTER BULLS:** Yield Grade 1-2 1185-2450 lbs. 95.00-113.00; high dressing 106.00-126.00; low dressing 85.00-102.00

**SLAUGHTER COWS:** Breaking and Boning (70-85% lean) 73.00-85.50, high dressing 82.00-89.00; low dressing 65.50-74.50. Lean (85-90%) 57.00-73.50

**BRED COWS:** Scarce

**COW & CALF PAIRS:** Scarce

**NORTHEAST MISSOURI WEEKLY SUMMARY**

(Bowling Green, Kingdom City, Palmyra)

Receipts: 4892 Week ago: 4398 Year ago: 5572

Compared to last week, steers under 650 lbs mostly 5.00 to 8.00 higher, over 650 lbs firm undertone. Heifers 400-600 lbs mostly steady with two loads of 500 lb heifers sharply higher undertone. Slaughter cows mostly firm to 5.00 higher.

**FEEDER STEERS:**

Medium and Large 1

300-400 lbs.	205.00-227.50
400-500 lbs.	203.00-219.00
500-600 lbs.	189.00-205.50
600-700 lbs.	173.00-195.00
700-750 lbs.	159.00-173.50
63 hd 839 lbs.	156.00

**FEEDER HEIFERS:**

Medium and Large 1

300-400 lbs.	172.00-194.00
400-500 lbs.	166.00-187.50
500-600 lbs.	154.00-172.50

**SLAUGHTER BULLS:** Yield Grade 1-2 1200-2235 lbs. 97.00-111.00; high dressing 110.00-134.00; low dressing 76.00-94.00

**SLAUGHTER COWS:** Breaking and Boning, (70-85% lean) 73.00-84.00; high dressing 82.00-95.00; low dressing 64.00-74.50. Lean (85-90%) 63.00-76.50

**SLAUGHTER STEERS:** Choice and Prime 2-3 pkg 150.00. Choice 2-3 143.50-146.50. Select and Choice 2-3 few 141.00-142.50

**BRED COWS:** Medium and Large 1-2 2-8 yrs 895-1290 lbs 2nd stage 1050.00-1225.00 per head

**SLAUGHTER HEIFERS:** Choice and Prime 2-3 pkg 151.00. Choice 2-3 144.00-146.00. Select and Choice 2-3 140.00-142.50. Select 1-2 132.00-136.00.

**COW & CALF PAIRS:** Medium and Large 1 over 5 yrs 1250-1300 lbs with 150-300 lb calves 1420.00-1575.00 per pair

**NORTH CENTRAL MISSOURI WEEKLY SUMMARY**

(Macon, Unionville, Green City, New Cambria)

Receipts: 3362 Week ago: 1814 Year ago: 1886

Compared to two weeks ago on comparable sales, steers 6.00 to 8.00 higher and heifers 3.00 to 6.00 lower after the sharp upswing two weeks ago. Slaughter cows uneven to 2.00 lower, some lean cows 4.00 to 6.00 lower.

**FEEDER STEERS:**

Medium and Large 1

400-500 lbs.	182.00-223.00
500-600 lbs.	176.00-210.25
600-700 lbs.	150.00-193.25
700-800 lbs.	143.00-162.75
800-850 lbs.	141.00-153.50

**FEEDER HEIFERS:**

Medium and Large 1

400-500 lbs.	169.50-180.00
500-600 lbs.	160.00-178.00
600-700 lbs.	145.00-168.00
700-800 lbs.	141.00-145.50
Pkg 846 lbs.	139.00

**SLAUGHTER BULLS:** Yield Grade 1-2 1065-2180 lbs 89.00-108.50; high dressing 109.00-117.50; couple low dressing 84.00-85.50

**SLAUGHTER COWS:** Breaking and Boning, (70-85% lean) 70.00-86.00; high dressing 80.00-89.50. Lean (85-90%) 54.00-72.00

**BRED COWS:** Medium and Large 1 2-8 yrs pkg 1501 lbs 2nd stage 1110.00. Medium and Large 1-2 2-8 yrs 952-1500 lbs 2nd stage 1050.00-1210.00 per head

**COW & CALF PAIRS:** Medium and Large 1-2 2-8 yrs 1000-1500 lbs with baby to 300 lb calves 1500.00-1800.00 per pair

**SOUTHEAST MISSOURI WEEKLY SUMMARY**

(Jackson and Farmington)

Receipts: 2795 Week ago: 1219 Year ago: 1249

Compared to last week, feeders sold steady to 11.00 higher. Slaughter cows and bulls from 2.00 lower to 1.00 higher.

**FEEDER STEERS:**

Medium and Large 1

300-400 lbs.	180.00-205.00
400-500 lbs.	175.00-206.00
500-600 lbs.	162.00-194.00
600-700 lbs.	148.00-179.00
700-800 lbs.	137.00-162.00

**FEEDER HEIFERS:**

Medium and Large 1

300-400 lbs.	150.00-177.00
400-500 lbs.	150.00-170.00
500-600 lbs.	140.00-169.00
600-700 lbs.	130.00-153.00
700-750 lbs.	128.00-138.00

**SLAUGHTER BULLS:** Yield Grade 1-2 1220-2095 lbs. 89.00-102.50, high dressing 104.50-115.50

**SLAUGHTER COWS:** Breaking and Boning (75-85% lean) 57.00-73.00; high dressing 73.00-90.00. Lean (85-90% lean) 45.00-65.00

**BRED COWS:** Medium and Large 2 2-8 yrs 1000-1325 lbs 2nd and 3rd stage 760.00-1100.00 per head

**COW & CALF PAIRS:** Scarce

**EAST CENTRAL MISSOURI WEEKLY SUMMARY**

(Cuba, Vienna)

Receipts: 3991 Week ago: 3575 Year ago: 3199

Compared to last week, steers uneven from 2.00 lower to 8.00 higher. Heifers steady to 4.00 lower, except 450-500 lbs 3.00-6.00 higher. Slaughter cows 2.00 to 4.00 higher.

**FEEDER STEERS:**

Medium and Large 1

300-400 lbs.	204.00-222.00
400-500 lbs.	186.50-217.00
500-600 lbs.	171.00-209.00
600-700 lbs.	165.00-195.00
700-800 lbs.	153.50-172.75

**FEEDER HEIFERS:**

Medium and Large 1

300-400 lbs.	165.00-185.00
400-500 lbs.	162.00-186.00
500-600 lbs.	149.50-178.00
600-700 lbs.	140.00-160.00

**SLAUGHTER BULLS:** Yield Grade 1-2 1275-2175 lbs. 97.00-108.50; low dressing 86.00-93.50

**SLAUGHTER COWS:** Breaking and Boning (70-85% lean) 75.00-86.00; high dressing 84.00-90.00. Lean (85-90%) 63.00-75.00

**BRED COWS:** Medium and Large 1 2-8 yrs 1050-1475 lbs 2nd and 3rd stage 1050.00-1350.00 per head

**COW & CALF PAIRS:** Medium and Large 1 2-8 yrs 1125-1350 lbs 150-300 lb calves 1825.00-1850.00 Medium and Large 1-2 short solid 1100-1225 lbs w/150-300 lb calves 1250.00-1700.00 per head

**MISSOURI WEEKLY DIRECT SLAUGHTER CATTLE REPORT 05/20/22**

Weekly Receipts: 280 Week ago: 480 Year ago: 320

Trading as of Friday morning: light to moderate with flat dressed sales mostly steady and grid dressed sales not tested

**LIVE STEERS & HEIFERS:**

No Sales Reported

**DRESSED STEERS & HEIFERS:**

7 loads Wed-Thu 225.00-226.00 flat

**GRADE AND WEIGHT (Grid):** No Sales Reported

**NATIONAL DIRECT DELIVERED FEEDER PIG REPORT**

05/20/22 Receipts: 79,490 Week ago: 85,129 Year Ago: 109,257 Receipts include 42% formulated prices. Early weaned pigs 10-12 lbs. basis: Formula 32.14-51.12, weighted average 41.64. Cash 21.00-55.25, weighted average 45.96. Feeder pigs 40 pounds basis: Cash 60.00-83.50, weighted average 75.32

**NATIONAL DAILY DIRECT PRIOR DAY HOG REPORTS FOR 05/23/22**

**BARROWS AND GILTS (Carcass Basis):** 6,545 head Base Carcass Price, 104.00-118.00, weighted average 112.92

**SOWS (Live Basis):** 6,981 head  
300-500 lbs. 38.00-76.00  
Over 500 lbs. 46.00-77.50

**WHOLESALE FEEDSTUFFS PRICES 05/20/22**  
(DOLLARS PER TON-BULK BASIS)

Area	Soybean Hulls - Pellets	Soybean Meal 48% Solvent	Corn Gluten Pellets	Wheat Middlings
Kansas City	250.00	438.90	297.50	215.00
St. Louis	n/a	n/a	295.00	192.67

**WEEKLY COMMODITY GRAIN FUTURES TRENDS**

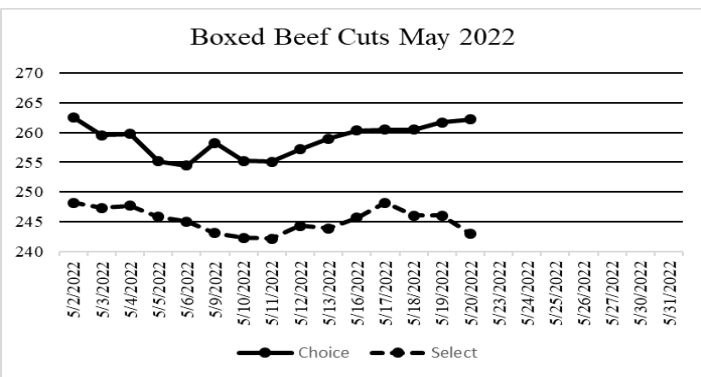
Compared to last week, Soybeans 0.24 to 0.59 higher, Wheat 0.02 to 0.08 lower except May 2023 0.05 higher, Corn 0.02 to 0.16 lower, KC Wheat 0.10 to 0.29 lower, Soybean Meal 13.30 to 20.60 higher.

Daily Grain Futures Closes

	Mon.	Tues.	Wed.	Thu.	Fri.
<b>Soybeans</b>					
Jul	1656 1/2	1678	1662 3/4	1690 1/2	1705 1/4
Aug	1607 1/4	1624 1/4	1607	1630 1/2	1641 3/4
Sep	1546 1/2	1561 3/4	1539	1558 3/4	1567
Nov	1512	1525 1/2	1499 1/2	1514 1/2	1521 3/4
Jan	1513 1/4	1527 1/2	1502 1/2	1517 1/2	1524 1/4
<b>Wheat</b>					
Jul	1247 1/2	1277 1/2	1230 3/4	1200 1/2	1168 3/4
Sep	1251	1278 3/4	1233	1206	1174 1/2
Dec	1254 1/4	1279	1234 1/4	1210	1179 1/4
Mar	1245 1/2	1271 3/4	1231 1/2	1209 1/2	1180
May	1210 1/4	1241	1208 3/4	1192 1/4	1166
<b>Corn</b>					
Jul	809 1/2	800 3/4	781 1/2	783 1/4	778 3/4
Sep	778	772 3/4	753 1/4	750 1/2	747
Dec	765 1/2	760 3/4	740 1/4	736	732
Mar	768	764	743 3/4	739 1/2	735 1/2
May	766	763 3/4	743 1/2	739 1/4	735
<b>KC Wheat</b>					
Jul	1352	1367 3/4	1324 1/2	1295 1/4	1252 3/4
Sep	1353 3/4	1369 1/4	1327	1299	1256 3/4
Dec	1354 3/4	1370	1328	1302	1261
Mar	1341 1/4	1360 3/4	1321 1/2	1299 1/4	1260
May	1300 1/2	1324 1/4	1292 1/4	1271 1/2	1233 1/4
<b>SB Meal</b>					
Jul	413.60	411.80	414.00	425.30	429.90
Aug	409.10	408.50	409.40	420.60	424.20
Sep	405.30	404.40	404.60	415.00	417.50
Oct	401.10	400.20	399.20	408.50	409.90
Dec	402.40	401.80	400.10	409.00	410.30

**NATIONAL BOXED BEEF CUTOUT/BOXED BEEF CUTS**

Date	Choice	Select	Total Loads
05/16	260.31	245.67	95
05/17	260.48	248.19	118
05/18	260.47	246.02	136
05/19	261.70	246.06	86
05/20	262.17	243.02	90
<b>5 Day Simple Average</b>	261.02	245.79	



**Missouri Weekly Sheep/Goat Auction Summary 05/23/22**

Receipts: 785 Week Ago: 640 Last Year: 1940  
All prices CWT unless otherwise noted.

**SHEEP:** Feeder lambs Medium and Large 1-2 30-40 lbs 247.50-280.00. Slaughter lambs woolled Choice and Prime 1-2 40-50 lbs 252.50-276.00; 50-60 lbs 235.00-261.00; 60-70 lbs 250.00-267.50; 70-80 lbs 250.00-260.00; 80-90 lbs 220.00-225.00; pkg 91 lbs 202.50. Choice 1-2 pkg 45 lbs 226.00; pkg 64 lbs 225.00; pkg 88 lbs 215.00. Good and Choice 1-2 pkg 87 lbs 200.00. Hari Choice and Prime 1 40-50 lbs 280.00-285.00. Choice and Prime 1-2 40-70 lbs 250.00-277.50; 70-80 lbs 235.00-250.00. Choice 1-2 pkg 51 lbs 240.00. Choice 2 pkg 51 lbs 206.00. Slaughter ewes Utility and Good 2 75-155 lbs 120.00-150.00. Utility and Good 2-3 80-175 lbs 100.00-121.00. Slaughter bucks 1-2 130-170 lbs 110.00-116.00. Replacements: ewes Medium and Large 1-2 2-4 yrs 70-115 lbs exposed 142.50-153.00. Families Medium and Large 1-2 2-4 yrs 80 lbs with baby to 20 lb lambs 230.00 per family; 2-4 yrs 100-110 lbs with 20-40 lb lambs 225.00-310.00 per family.

**GOATS:** Feeder kids Selection 1 30-40 lbs 331.00-350.00. Selection 1-2 pkg 23 lbs 300.00; 30-40 lbs 263.00-326.00. Slaughter kids Selection 1 40-50 lbs 275.00-300.00; pkg 57 lbs 311.00; pkg 65 lbs 275.00. Selection 2 40-65 lbs 225.00-250.00. Slaughter nannies/does Selection 1-2 110-135 lbs 175.00-232.50; pkg 180 lbs 142.50. Replacements: Families Selection 1-2 2-4 yrs 70-80 lbs with 20-40 lb kids 160.00-180.00 per family

Explanatory Notes: Stage - Represents estimated lambing/kidding period (Open, Exposed, Bred, Fall = Sep-Nov, Win = Dec-Feb, Spr = Mar-May, Sum=Jun-Aug

**WEEKLY COMMODITY FUTURES TRENDS**

Compared to last week, Live Cattle 0.50 to 2.37 lower, Lean Hogs 2.32 yo 8.12 higher, Feeder Cattle 3.48 to 4.47 lower.

Daily Futures Closes

	Mon.	Tues.	Wed.	Thu.	Fri.
<b>Cattle</b>					
Jun	133.17	133.00	131.50	131.50	131.57
Aug	133.90	133.47	131.70	132.02	131.55
Oct	139.85	139.52	137.92	138.00	137.42
Dec	146.00	145.35	143.80	143.82	143.40
Feb	151.42	150.77	149.22	148.97	148.55
<b>Lean Hogs</b>					
Jun	103.82	105.15	106.10	105.30	108.87
Jul	104.80	107.75	108.52	106.97	109.00
Aug	104.80	107.25	107.85	106.12	107.17
Oct	90.80	91.47	91.80	90.75	92.45
Dec	84.02	83.27	83.45	83.17	84.47
<b>Fdr Cat</b>					
May	157.40	157.17	155.85	154.12	153.40
Aug	167.42	166.77	165.80	165.20	163.92
Sep	170.05	169.22	168.45	164.90	167.00
Oct	172.42	171.37	170.72	170.20	159.57
Nov	174.07	173.10	175.52	171.82	171.32
<b>Milk</b>					
May	24.99	25.02	24.98	25.12	25.09
Jun	24.41	24.59	24.57	24.80	24.48
Jul	24.25	24.44	24.40	24.85	24.65

**WEEKLY LIVESTOCK SLAUGHTER 05/20/22**

	Cattle	Hogs	Sheep
Week to Date:	680,000	2,414,000	35,000
Last Week:	657,000	2,375,000	37,000
Last Year:	672,000	2,391,000	37,000

**Missouri Weekly Cattle Auction Summary 05/23/22**

Receipts: 28,976 Week ago: 23,609 Year ago: 24,800  
 Compared to last week, steers under 650 lbs. sold steady to 3.00 higher, over 650 lbs. steady to 2.00 lower. Heifers sold unevenly steady to 2.00 lower. The supply was moderate with a few barns holding special sales with decent offerings of better quality weaned and vaccinated calves. As typical for this time of year heavyweight yearlings are in short supply 66 percent of this week's supply was under 600 lbs. Calves that are unweaned, bawling and carrying extra flesh of course seeing discounts. Some areas mostly in the southern half of the state saw heavy rains with some areas exceeding 5 inches. Farmers continue to struggle to make progress planting and getting started with haying. Auctions around the state continue to see more cull cows than typical, that same story is playing out all across the nation. Prices for cull animals did back off a few bucks this week but overall that market has remained very strong and unlike other areas where drought is playing in to those marketing decisions most here are just trying to take advantage of current price levels. There is a tiny touch of concern that the cool spring and excess of moisture, which has pastures and hay fields looking a bit short could be a problem come summer. Friday saw the release of the monthly cattle on feed report, numbers were a bit bearish. On feed was reported at 102 percent, placements at 99.1 and marketings at 97.8. Both on feed and placements were higher than expected while marketings were below. Feedlot trade for the week as of Friday afternoon totaled just over 86K head. Live sales were mostly 138.00-142.00 and dressed sales at 226.00 all lower than sales a week ago. Boxed beef cutouts were mixed with choice closing at 262.17, up 3.22 and select at 243.09, down 0.81 compared to the previous week. Last week's estimated slaughter was reported at 680,000 the largest week since in over two years, as packers work to make sure meat counters are full for the upcoming Memorial Day weekend, which is the official kick off of grilling season. The Missouri Stocker Formula consist of 7550 head with a weighted average weight of 531.28 lbs. and a price value of 188.68, 2.25 higher than a week ago. The steer/heifer spread is 29.98.

**MISSOURI GRAIN WEEKLY TRENDS**

Compared to last week, Soybeans 0.44 to 0.70 higher, Wheat 0.07 to 0.09 lower, Corn mixed 0.08 lower to 0.08 higher, Sorghum 0.03 to 0.49 lower

Area	#1 Soybeans	#2 Soft Wheat	#2 Corn	#2 Grain Sorghum
<b>Kansas City</b>				
Friday**	16.57-16.67	11.46	7.96-8.11	7.71
Monday	16.66-16.76	12.16	8.24-8.39	7.99
Tuesday	16.83-16.98	12.44	8.11-8.31	7.51
Wednesday	16.68-16.83	11.98	7.92-8.12	7.30
Thursday	16.95-17.10	11.71	7.93-8.18	7.26
Friday	17.10-17.21	11.39	7.88-8.13	7.22
<b>St. Louis</b>				
Friday**	17.23	11.81	8.30-8.32	7.11
Monday	17.32	12.51	8.58	7.39
Tuesday	17.57	12.79	8.48	7.31
Wednesday	17.46	12.33	8.31	7.12
Thursday	17.73	12.06	8.32	7.12
Friday	17.93	11.73	8.27	7.08
<b>Central</b>				
Friday**	16.52	—	7.81-7.96	—
Monday	16.61	—	8.19-8.24	—
Tuesday	16.83	—	8.11-8.16	—
Wednesday	16.68-16.78	—	7.92-7.97	—
Thursday	17.00-17.05	—	7.93-7.98	—
Friday	17.15-17.20	—	7.88-7.93	—
<b>S.E. MO</b>				
Friday**	16.85-17.02	—	8.02-8.21	—
Monday	16.94-17.12	—	8.30-8.49	—
Tuesday	17.16-17.33	—	8.21-8.41	—
Wednesday	17.01-17.18	—	8.02-8.22	—
Thursday	17.28-17.45	—	8.15-8.23	—
Friday	17.43-17.61	—	8.09-8.18	—

(PRICES PER BUSHEL) \*NEW CROP \*\*PREVIOUS WEEK'S PRICES  
 \*Most locations not providing cash wheat bids at this time, due to temporary transportation issues.\*

**Afternoon National Slaughter Cattle Review for 05/20/22**

Thus far for Friday negotiated cash trading has been mostly inactive on very light demand in the Western Cornbelt. Not enough purchases for a market trend. Negotiated cash trading was at a standstill in all other major feeding regions. On Tuesday in the Southern Plains live purchases traded at 138.00. In Nebraska on Wednesday live purchases traded at 140.00 and on Tuesday dressed purchases traded at 226.00. In the Western Cornbelt on Tuesday live purchases traded at 142.00. The last reported dressed market in the Western Cornbelt was last week with purchases from 227.00 -230.00. The last reported market in Colorado was last week with live purchases from 140.00- 144.00.

Negotiated Cash Sales:			
Confirmed:	923	Week Ago:	1,120
		Year Ago:	357
Week to date:	86,310	Week Ago:	85,373
		Year Ago:	80,831

Live Basis	Steers	Heifers
Over 80% Choice	140.00-140.00 avg 140.00	-
65-80% Choice	-	-
35-65% Choice	-	-
0-35% Choice	-	-
Total All Grades	140.00-140.00 avg 140.00	-
Dressed Basis		
Over 80% Choice	-	-
65-80% Choice	-	-
35-65% Choice	-	-
0-35% Choice	-	-
Total All Grades	-	-

**MISSOURI WEEKLY HAY SUMMARY 05/20/22**

Although there are still many areas mainly focused on getting corn and beans in the ground, hay season is underway. As of Monday 12 percent of alfalfa has seen the first cutting and 2 percent of other hay. Those numbers being a week old have likely increased slightly this week. Many of those with grass hay are unlikely to be in much of a hurry however and willing to give up some quality to gain some yields as most fields are very short due to the cooler than average weather and slow start to growth this year. Although there hasn't been a lot of new crop hay sold prices especially on better quality hay are firm which has been expected due to the huge increase in production cost. There has been a notable increase in interest and a lot of window shopping going on as it seems many would like to acquire at least some of their next feeding season needs earlier than usual. The Missouri Department of Agriculture has a hay directory visit <http://mda.mo.gov/abd/haydirectory/> for listings of hay <http://agebb.missouri.edu/haylst/>

Please Note: The above volumes (tonnage, acres, and bales) listed on this USDA LPGMN report are for confirmed trades only, it does not include estimated volume (tonnage) for bids or offers to the trade.

- Alfalfa - Supreme 225.00-275.00, small square 8.00-12.00 per bale
- Alfalfa - Premium 175.00-225.00
- Alfalfa - Good 120.00-180.00, small square 5.00-9.00 per bale
- Alfalfa - Fair 100.00-125.00
- Alfalfa/grass mix - Good/Premium small square 6.00-8.00 per bale
- Mixed grass - Good/Premium 80.00-140.00
- Mixed grass - Fair/Good 60.00-100.00, small square 4.00-6.00 per bale
- Mixed grass - Fair 25.00-55.00 per large round bale
- Wheat straw - 4.00-6.00 per small square bale