

# Weekly Market Summary

Published by:  
**Missouri Department of Agriculture**  
**Ag Business Development Division**  
**Market News Program**



Chris Chinn, Director  
 Jill Wood, Division Director  
 Tony Hancock, Editor  
<http://www.ams.usda.gov/marketnews.htm>  
[agmarketnews.mo.gov](http://agmarketnews.mo.gov)

Michael L. Parson, Governor

Volume XLII, Number 21 ♦ P.O. Box 630, Jefferson City, MO 65102 ♦ (573) 751-4211 ♦ Monday, May 30, 2022

## MISSOURI WEEKLY FEEDER CATTLE WEIGHTED AVERAGE REPORT

Receipts: 29,138 Week ago: 28,976 Year ago: 29,137

Steers and Heifers Medium and Large 1—Weighted average weights and prices

### STEERS: Medium and Large 1

329 lbs. 212.83	528 lbs. 198.39	721 lbs. 163.18	918 lbs. 145.35
378 lbs. 209.04	570 lbs. 189.22	769 lbs. 159.13	1051 lbs. 129.25
425 lbs. 204.98	619 lbs. 182.66	824 lbs. 154.56	
474 lbs. 201.26	677 lbs. 175.37	875 lbs. 155.91	

### HEIFERS: Medium and Large 1

270 lbs. 160.99	477 lbs. 169.71	674 lbs. 154.34	874 lbs. 136.40
327 lbs. 176.41	523 lbs. 167.36	728 lbs. 148.96	
375 lbs. 175.45	572 lbs. 159.22	776 lbs. 144.43	
426 lbs. 173.04	621 lbs. 156.82	881 lbs. 138.92	

### Missouri Steer (Heifer) Stocker Formula for 5/30/2022

Monday's Missouri Stocker Formula consists of **8071 (7057)** head with a weighted average weight of **546.30 (530.05)** lbs. and a price value of **188.08 (160.71)**, 0.60 lower (2.01 higher) than last Monday.

This a rolling seven day calculated weighted value which combines all Feeder Steers reported by MDA/USDA Market News Service weighing from 400-649 lbs. in the Medium and Large 1 and Medium and Large 1-2 frame and muscle classifications, including all comment cattle except Brahman X. Heifer values are in parentheses.

### SOUTH CENTRAL MISSOURI WEEKLY SUMMARY

(West Plains, Ava)

Receipts: Week ago: 5778 Year Ago:

Compared to last week, steer calves early week steady to 4.00 higher, heifer calves early week 3.00 to 6.00 higher, spots 12.00 higher, late week steers 3.00 to 9.00 lower and heifers steady. Slaughter cows steady to 5.00 higher. Slaughter bulls mostly steady to 5.00 higher.

#### FEEDER STEERS:

Medium and Large 1

300-400 lbs.	201.00-217.50
400-500 lbs.	189.00-212.00
500-600 lbs.	175.00-204.50
600-700 lbs.	158.00-194.75
800-850 lbs.	152.00-157.25
29 hd 1051 lbs.	129.25

#### FEEDER HEIFERS:

Medium and Large 1

300-400 lbs.	170.00-178.00
400-500 lbs.	161.00-184.00
500-600 lbs.	147.00-178.25
600-700 lbs.	135.00-167.50
52 hd 774 lbs.	144.00

#### FEEDER HOLSTEIN STEERS

Large 3

Scarce

SLAUGHTER COWS: Breaking and Boning (70-85% lean) 73.00-86.00, high dressing 81.00-95.00; low dressing 58.00-77.50. Lean (85-90%) 57.00-75.00

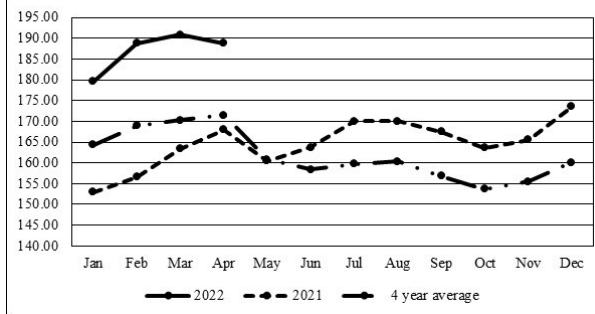
SLAUGHTER BULLS: Yield Grade 1-2 1175-2060 lbs. 97.50-110.00; high dressing 112.00-137.00; low dressing 74.00-99.00

BRED COWS: Medium and Large 1-2 2-8 yrs 1055-1452 lbs 2nd to 3rd stage 1050.00-1450.00, 1st stage 900.00-1000.00 per head.

COW & CALF PAIRS: Medium and Large 2 2-8 yrs 1060-1250 lbs with 150-300 lb calves 1050.00-1450.00 per pair

BRED HEIFERS: Medium and Large 2 pkg 805 lbs 1st to 3rd stage 775.00 per head

Missouri Stocker Formula - Steers



\*Graph is updated the first Monday of each month.

### SOUTHWEST MISSOURI WEEKLY SUMMARY

(Joplin and Springfield)

Receipts: 8454 Week Ago: 9463 Year ago: 8179

Compared to last week, steers and heifers steady to 4.00 higher, most of the gain early week. Slaughter cows and bulls steady.

#### FEEDER STEERS:

Medium and Large 1

300-400 lbs.	197.00-222.50
400-500 lbs.	192.50-215.00
500-600 lbs.	171.50-205.00
600-700 lbs.	160.00-190.00
700-750 lbs.	152.00-165.00
800-900 lbs.	140.50-154.50
900-950 lbs.	138.00-145.00

#### FEEDER HEIFERS:

Medium and Large 1

300-400 lbs.	168.00-180.00
400-500 lbs.	155.50-177.00
500-600 lbs.	148.00-169.00
600-700 lbs.	141.75-158.00
700-800 lbs.	140.25-147.00
800-900 lbs.	137.00-140.00

#### FEEDER HOLSTEIN STEERS

Large 3

Pkg 604 lbs.	120.00
15 hd 703 lbs.	118.00
800-900 lbs.	115.25-116.25

SLAUGHTER COWS: Breaking and Boning (70-85% lean) 70.00-82.50, high dressing 79.00-88.50; low dressing 61.50-72.00. Lean (85-90%) 60.50-73.50

SLAUGHTER BULLS: Yield Grade 1-2 1230-2200 lbs. 98.50-112.00; high dressing 109.50-124.00; low dressing 73.00-97.50

BRED COWS: Medium and Large 1 2-8 yrs pkg 1448 lbs 2nd to 3rd stage 1225.00. Medium and Large 1-2 2-8 yrs 890-1380 lbs 2nd to 3rd stage 800.00-1350.00; over 8 yrs 1108-1230 lbs 2nd to 3rd stage 825.00-900.00 per head

COW & CALF PAIRS: Medium and Large 1-2 couple 2-8 yrs 1010-1325 lbs with 150-300 lb calves 1035.00-1375.00 per pair

### WEST CENTRAL MISSOURI WEEKLY SUMMARY

(Kingsville, Windsor, Butler)

Receipts: 5797 Week ago: 5795 Year ago: 6452

Compared to last week, steers and heifers mostly steady. Slaughter cows and bulls steady to 2.00 higher.

#### FEEDER STEERS:

Medium and Large 1

400-500 lbs. 181.00-220.00  
500-600 lbs. 166.50-210.00  
600-700 lbs. 167.00-190.50  
700-800 lbs. 152.00-168.50  
800-900 lbs. 153.75-160.85  
900-950 lbs. 144.25-147.50

#### FEEDER HEIFERS:

Medium and Large 1

400-500 lbs. 163.50-183.00  
500-600 lbs. 149.00-177.50  
600-700 lbs. 150.50-169.50  
700-800 lbs. 142.00-155.00  
Pkg 864 lbs. 127.50  
Pkg 913 lbs. 132.00

SLAUGHTER BULLS: Yield Grade 1-2 1275-2185 lbs. 99.00-111.50; high dressing 109.00-126.00; low dressing 85.00-97.00

SLAUGHTER COWS: Breaking and Boning (70-85% lean) 73.00-87.50, high dressing 82.00-95.00. Lean (85-90%) 63.00-75.00

BRED COWS: Medium and Large 1 2-8 yrs 1120-1333 lbs 2nd to 3rd stage 1275.00-1375.00 per head

COW & CALF PAIRS: Medium and Large 1 10 pairs 2-4 yrs 1050 lbs with 150-300 lb calves 2150.00; 5-8 yrs 1225-1325 lbs with 150-300 lb calves 1405.00-1700.00 per pair

### NORTHEAST MISSOURI WEEKLY SUMMARY

(Bowling Green, Kingdom City, Palmyra)

Receipts: 5555 Week ago: 4892 Year ago: 4626

Compared to last week's very active market, steers 400-500 lbs 3.00 to 6.00 lower, 500-600 lbs steady to 3.00 higher, 600-650 lbs 2.00 to 4.00 lower, over 650 lbs higher undertone. Heifers mostly steady to firm. Slaughter cows steady to firm.

#### FEEDER STEERS:

Medium and Large 1

300-400 lbs. 210.00-229.00  
400-500 lbs. 200.00-214.00  
500-600 lbs. 184.00-209.00  
600-700 lbs. 164.50-191.00  
700-800 lbs. 156.00-170.00  
800-900 lbs. 153.50-158.75  
900-950 lbs. 145.00-146.50

#### FEEDER HEIFERS:

Medium and Large 1

300-400 lbs. 179.00-188.00  
400-500 lbs. 168.00-180.00  
500-600 lbs. 153.00-179.50  
600-700 lbs. 146.00-164.00  
74 hd 727 lbs. 151.25  
Pkg 756 lbs. 144.00

SLAUGHTER BULLS: Yield Grade 1-2 1345-2320 lbs. 94.00-110.00; high dressing 109.00-123.00; low dressing 84.00-95.50

SLAUGHTER COWS: Breaking and Boning, (70-85% lean) 73.50-85.00; high dressing 84.00-97.50; low dressing 64.00-75.00. Lean (85-90%) 64.50-77.00

SLAUGHTER STEERS: Choice 2-3 140.00-146.00. Select and Choice 2-3 138.00-141.00

BRED COWS: Scarce

SLAUGHTER HEIFERS: Choice 2-3 141.00-147.00. Select and Choice 1-3 137.00-140.00. Select and Choice 2-3 137.00-139.50

COW & CALF PAIRS: Scarce

### NORTH CENTRAL MISSOURI WEEKLY SUMMARY

(Macon, Unionville, Green City, New Cambria)

Receipts: 1659 Week ago: 3362 Year ago: 0

Compared to two weeks ago, steers and heifers steady to firm, spots up to 3.00 higher on comparable sales. Slaughter cows steady to firm.

#### FEEDER STEERS:

Medium and Large 1

400-500 lbs. 201.50-222.00  
500-600 lbs. 184.00-208.00  
600-700 lbs. 178.00-188.00  
Pkg 739 lbs. 158.25  
800-900 lbs. 156.25-156.75

#### FEEDER HEIFERS:

Medium and Large 1

400-500 lbs. 171.25-186.00  
500-600 lbs. 155.75-175.00  
600-700 lbs. 160.00-165.50  
Pkg 793 lbs. 145.50  
800-850 lbs. 141.75-142.75

SLAUGHTER BULLS: Yield Grade 1-2 1460-1710 lbs couple 105.00-109.50; ind low dressing 86.00

SLAUGHTER COWS: Breaking and Boning, (70-85% lean) 73.50-81.00; high dressing 82.00-89.00; low dressing 66.00-72.00. Lean (85-90%) 64.00-73.00

BRED COWS: Scarce

COW & CALF PAIRS: Scarce

### SOUTHEAST MISSOURI WEEKLY SUMMARY

(Jackson and Farmington)

Receipts: 1105 Week ago: 2795 Year ago: 758

Compared to last week, steers and heifers steady to 10.00 lower. Slaughter cows and bulls 2.00 higher.

#### FEEDER STEERS:

Medium and Large 1

300-400 lbs. 181.00-211.00  
400-500 lbs. 177.00-199.00  
500-600 lbs. 154.00-187.00  
600-700 lbs. 143.00-161.00  
700-750 lbs. 143.00-148.00

#### FEEDER HEIFERS:

Medium and Large 1

300-400 lbs. 151.00-177.00  
400-500 lbs. 135.00-165.00  
500-600 lbs. 139.00-164.00  
600-700 lbs. 134.00-148.00  
Pkg 708 lbs. 136.00

SLAUGHTER BULLS: Yield Grade 1-2 1130-2090 lbs. 80.00-101.00, high dressing 108.00-118.50

SLAUGHTER COWS: Breaking and Boning (75-85% lean) 70.00-77.00; high dressing 75.00-90.00. Lean (85-90% lean) 55.00-67.00

BRED COWS: Medium and Large 2 2-8 yrs 1015-1395 lbs 1st to 3rd stage 850.00-1175.00 per head

COW & CALF PAIRS: Medium and Large 2 2-8 yrs 1000 lbs some rebred with calves over 300 lb 1275.00-1425.00 per pair

### EAST CENTRAL MISSOURI WEEKLY SUMMARY

(Cuba, Vienna)

Receipts: 4347 Week ago: 3991 Year ago: 4087

Compared to last week, steers under 650 lbs steady to 3.00 lower, over 650 lbs steady to 3.00 higher. Heifers steady to 4.00 higher. Slaughter cows 2.00 lower to 2.00 higher.

#### FEEDER STEERS:

Medium and Large 1

350-400 lbs. 201.00-214.00  
400-500 lbs. 193.00-209.00  
500-600 lbs. 167.50-208.50  
600-700 lbs. 167.00-187.00  
700-800 lbs. 149.00-174.25

#### FEEDER HEIFERS:

Medium and Large 1

300-400 lbs. 168.00-184.00  
400-500 lbs. 162.00-185.50  
500-600 lbs. 149.00-175.00  
600-700 lbs. 140.50-165.00  
750-800 lbs. 133.00-139.00

SLAUGHTER BULLS: Yield Grade 1-2 1270-2140 lbs. 95.00-113.00; high dressing few 111.00-122.00; low dressing 70.00-95.00

SLAUGHTER COWS: Breaking and Boning (70-85% lean) 76.00-86.00; high dressing 85.00-92.00. Lean (85-90%) 65.00-77.00

BRED COWS: Medium and Large 1-2 2-8 yrs 935-1375 lbs 2nd and 3rd stage 1000.00-1110.00 per head

COW & CALF PAIRS: Scarce

### MISSOURI WEEKLY DIRECT SLAUGHTER

#### CATTLE REPORT 05/27/22

Weekly Receipts: 120 Week ago: 280 Year ago: 320

Trading as of Friday morning: light with flat dressed sales steady to 1.00 lower on early week trade. Grid dressed sales were inactive.

#### LIVE STEERS & HEIFERS:

No Sales Reported

#### DRESSED STEERS & HEIFERS:

3 loads Tue 225.00 flat

GRADE AND WEIGHT (Grid): No Sales Reported

### NATIONAL DIRECT DELIVERED FEEDER PIG REPORT

05/27/22 Receipts: 82,870 Week ago: 79,490 Year Ago: 93,463  
Early weaned pigs 10-12 lbs. basis: Formula 30.51-54.75, weighted average 43.33. Cash 26.00-51.00, weighted average 42.78. Feeder pigs 40 pounds basis: Cash 62.00-76.50, weighted average 70.22

### NATIONAL DAILY DIRECT PRIOR DAY HOG REPORTS

#### FOR 05/27/22

BARROWS AND GILTS (Carcass Basis): 4,819 head

Base Carcass Price, 104.00-116.00, weighted average 109.04

SOWS (Live Basis): 7,500 head

300-500 lbs. 32.00-71.75

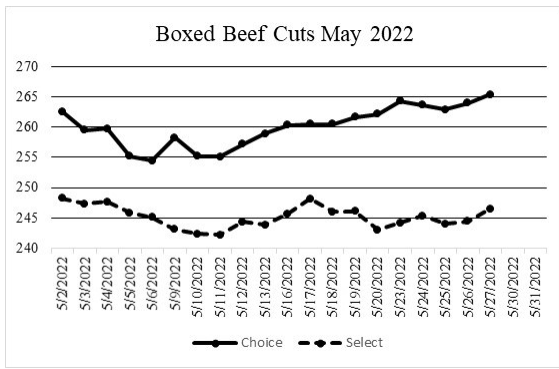
Over 500 lbs. 50.77-73.50

**WHOLESALE FEEDSTUFFS PRICES 05/27/22**  
(DOLLARS PER TON-BULK BASIS)

Area	Soybean Hulls - Pellets	Soybean Meal 48% Solvent	Corn Gluten Pellets	Wheat Middlings
Kansas City	241.67	439.30	297.50	205.00
St. Louis	N/A	N/A	295.00	196.67

**NATIONAL BOXED BEEF CUTOUT/BOXED BEEF CUTS**

Date	Choice	Select	Total Loads
05/23	264.28	244.23	125
05/24	263.65	245.35	165
05/25	262.93	244.06	102
05/26	263.97	244.43	134
05/27	265.42	246.50	106
<b>5 Day Simple Average</b>	264.05	244.91	



**Missouri Weekly Sheep/Goat Auction Summary 05/30/22**

Receipts: 2537 Week Ago: 785 Last Year: 621  
All prices CWT unless otherwise noted.

**SHEEP:** Slaughter lambs wooled and shorn Choice and Prime 1-3 40-60 lbs 220.00-255.00. Hair Choice and Prime 1-3 20-30 lbs 240.00-275.00; 30-40 lbs 244.00-340.00, fancy 355.00-360.00; 40-50 lbs 245.00-315.00, fancy 350.00; 70-80 lbs 235.00-250.00; 80-95 lbs 237.50-245.00. Choice 1-3 25-40 lbs 217.00-235.00; 40-70 lbs 230.00-265.00; 80-90 lbs 215.00-222.50. Good 1-2 pkg 42 lbs 182.50; pkg 95 lbs 168.00. Slaughter ewes Good 2-3 pkg 143 lbs 120.00. Utility and Good 1-3 pkg 85 lbs 112.50; pkg 127 lbs 90.00; pkg 151 lbs 107.00. Hair Good 2-3 lot 61 lbs 135.00; lot 79 lbs 152.00; lot 94 lbs 142.50; 100-115 lbs 135.00-190.00; 150-160 lbs 120.00-125.00. Utility and Good 1-3 lot 75 lbs 135.00; lot 85 lbs 107.50; 100-150 lbs 98.00-150.00. Utility and Good 1-3 lot 90 lbs 145.00; 140-145 lbs 165.00-175.00. Hair bucks 1-2 80-95 lbs 175.00-220.00; 100-150 lbs 140.00-200.00. Replacements: hair ewes Small and Medium 1-2 1-2 yrs 90-110 lbs exposed 200.00-220.00 per head. Families Small and Medium 1-2 2-4 yrs 95-105 lbs with baby to 20 lb lambs 250.00-375.00 per unit; 2-4 yrs 105 lbs with 20-40 lb lambs 465.00 per unit. **GOAT:** Feeder kids Selection 1 20-30 lbs 355.00-390.00, fancy 407.00; 30-40 lbs 370.00-440.00; 40-50 lbs 330.00-427.00. Selection 2 pkg 29 lbs 250.00; 30-40 lbs 225.00-310.00; 40-50 lbs 265.00-325.00. Slaughter kids Selection 1 50-60 lbs 345.00-420.00; 60-80 lbs 307.50-440.00. Selection 2 45-60 lbs 275.00-330.00. Selection 3 50-60 lbs 190.00-220.00. Slaughter nannies/does Selection 1-2 70-80 lbs 152.00-175.00; 80-90 lbs 165.00-195.00; 90-100 lbs 130.00-195.00; 100-140 lbs 142.50-202.50. Slaughter bucks/billies Selection 1-2 90-145 lbs 150.00-210.00. Replacement nannies/does Selection 1-2 yearlings 90-100 lbs exposed 250.00-335.00 per head

Explanatory Notes: Stage - Represents estimated lambing/kidding period (Open, Exposed, Bred, Fall = Sep-Nov, Win = Dec-Feb, Spr = Mar-May, Sum=Jun-Aug

**WEEKLY COMMODITY GRAIN FUTURES TRENDS**

Compared to last week, Soybeans 0.17 to 0.27 higher, Wheat steady to 0.12 lower, Corn 0.02 to 0.03 lower, KC Wheat 0.08 to 0.18 lower, Soybean Meal 2.40 to 5.20 higher.

Daily Grain Futures Closes

	Mon.	Tues.	Wed.	Thu.	Fri.
<b>Soybeans</b>					
Jul	1687	1693	1681	1726 1/2	1732 1/4
Aug	1628 3/4	1632 1/4	1620 1/2	1659 1/2	1663
Sep	1558 1/2	1559 1/4	1549 1/4	1584 1/2	1584 1/2
Nov	1518 3/4	1517 1/2	1512 3/4	1544 3/4	1544
Jan	1522	1521	1517 1/4	1547 3/4	1547 3/4
<b>Wheat</b>					
Jul	1190	1154 3/4	1148 1/4	1143 1/4	1157 1/2
Sep	1197 1/2	1163 1/4	1156 3/4	1152	1166 1/4
Dec	1203 3/4	1170	1163 1/2	1158 3/4	1173 1/2
Mar	1205	1173 1/4	1166 1/4	1161 3/4	1176 3/4
May	1191	1163	1152 3/4	1149 1/2	1166
<b>Corn</b>					
Jul	786 1/4	771 3/4	772 1/4	765	777 1/4
Sep	754 3/4	741	739 3/4	734	744 3/4
Dec	739	725 1/4	723 1/4	718 3/4	730
Mar	742	729	727	722 3/4	733 3/4
May	740 3/4	728 3/4	726 1/2	722 3/4	733
<b>KC Wheat</b>					
Jul	1276 1/2	1237 3/4	1233 1/4	1228 1/2	1235 1/4
Sep	1280 1/2	1242 1/2	1238 1/4	1234	1241 1/4
Dec	1284 3/4	1247 1/4	1244 1/4	1240 1/2	1248 1/4
Mar	1283 3/4	1246 1/2	1245	1241 1/2	1248 1/2
May	1257 1/2	1222 1/2	1221	1217 1/2	1225 1/4
<b>SB Meal</b>					
Jul	422.50	427.10	424.20	428.20	432.30
Aug	418.10	421.60	418.90	422.70	427.30
Sep	412.30	415.10	412.90	417.00	421.00
Oct	405.90	408.00	406.30	411.20	414.40
Dec	406.70	408.80	407.30	412.40	415.50

**WEEKLY COMMODITY FUTURES TRENDS**

Compared to last week, Live Cattle 0.32 to 0.85 higher, Lean Hogs 1.53 to 2.72 higher, Feeder Cattle 2.25 to 2.58 higher.

Daily Futures Closes

	Mon.	Tues.	Wed.	Thu.	Fri.
<b>Cattle</b>					
Jun	132.77	132.72	132.30	132.40	132.17
Aug	132.97	132.75	132.52	132.60	132.40
Oct	138.37	138.62	138.20	138.17	138.05
Dec	144.02	144.25	143.92	143.82	143.90
Feb	149.02	149.35	149.10	148.82	148.87
<b>Lean Hogs</b>					
Jun	110.37	109.02	109.05	111.10	110.40
Jul	110.85	109.05	107.95	111.82	111.72
Aug	110.22	109.00	107.70	110.12	110.45
Oct	93.72	93.02	92.27	94.30	94.77
Dec	85.67	85.25	85.20	86.50	86.97
<b>Fdr Cat</b>					
May	153.45	154.50	154.60	154.57	—
Aug	165.62	168.15	167.95	166.67	166.32
Sep	168.30	171.07	171.05	169.72	169.30
Oct	170.75	173.47	173.65	172.55	171.82
Nov	172.67	175.22	175.57	174.70	173.90
<b>Milk</b>					
May	25.09	25.08	25.11	25.19	25.19
Jun	24.47	24.15	24.20	24.25	24.51
Jul	24.68	24.33	24.45	24.37	24.60

**WEEKLY LIVESTOCK SLAUGHTER 05/27/22**

	Cattle	Hogs	Sheep
Week to Date:	644,000	2,351,000	35,000
Last Week:	680,000	2,414,000	35,000
Last Year:	630,000	2,378,000	35,000

**Missouri Weekly Cattle Auction Summary 05/30/22**

Receipts: 29,138 Week ago: 28,976 Year ago: 29,137

Compared to last week, steers under 650 lbs. sold uneven from 2.00 lower to 2.00 higher. Steers over 650 lbs. and all weights of heifers sold mostly steady to 3.00 higher. The supply of feeders was moderate and mostly lighter weights although there was a few loads of heavy weights this week. Prices have crept back up a little over the last couple of weeks, with some loads of 8 weight steers in the upper 150's and a couple of them just edging back into the 160's. Several reporters did note some very good quality at some barns this week, but overall quality and condition stretches across the spectrum. Hay season is nearly in full swing. Several fields are still awfully wet but many found some to cut over the last couple of weeks. As of the writing of this report however, rains have moved back into NW MO temporarily parking tractors once again. Boxed beef cutout values were higher for the week, Choice closed on Friday at 256.42, up 3.25 and select closed at 246.50, up 3.41. Feedlot volume totaled a bit over 77k head as of the Friday afternoon report. Live sales were reported from 136.00-142.00 and dressed sales from 223.00-225.00. Monday's Missouri Stocker Formula consisted of 8071 head with a weighted average weight of 546.30 lbs. and a price value of 188.08, down 0.60 compared to the previous week. The steer/heifer spread is 27.37.

**MISSOURI GRAIN WEEKLY TRENDS**

Compared to last week, Soybeans 0.08 to 0.28 higher, Wheat 0.11 to 0.17 lower, Corn 0.02 to 0.08 higher, Sorghum 0.01 to 0.02 lower.

Area	#1 Soybeans	#2 Soft Wheat	#2 Corn	#2 Grain Sorghum
<b>Kansas City</b>				
Friday**	17.10-17.21	11.39	7.88-8.13	7.22
Monday	16.93-17.08	11.62	7.96-8.21	7.29
Tuesday	16.97-17.12	11.28	7.82-8.12	7.15
Wednesday	16.86-17.01	11.22	7.82-8.12	7.13
Thursday	17.24-17.39	11.17	7.75-8.10	7.08
Friday	17.28-17.43		7.87-8.22	7.20
<b>St. Louis</b>				
Friday**	17.93	11.73	8.27	7.08
Monday	16.58-16.83	11.97	8.38	7.16
Tuesday	17.97	11.63	8.27	7.02
Wednesday	17.81	11.57	8.27	7.03
Thursday	16.89-17.14	11.52	8.20	6.95
Friday	18.21		8.29	7.07
<b>Central</b>				
Friday**	17.15-17.20	—	7.88-7.93	—
Monday	16.97-17.02	—	7.96-8.06	—
Tuesday	17.03-17.08	—	7.82-7.97	—
Wednesday	16.91-16.96	—	7.82-7.97	—
Thursday	17.41	—	7.85-7.90	—
Friday	17.47	—	7.97-8.02	—
<b>S.E. MO</b>				
Friday**	17.43-17.61	—	8.09-8.18	—
Monday	17.26-17.43	—	8.17-8.26	—
Tuesday	17.31-17.48	—	8.07-8.12	—
Wednesday	17.19-17.36	—	8.08-8.12	—
Thursday	17.64-17.18	—	8.01-8.05	—
Friday	17.67-17.88	—	7.97-8.15	—

(PRICES PER BUSHEL) \*NEW CROP \*\*PREVIOUS WEEK'S PRICES  
\*Most locations not providing cash wheat bids at this time, due to temporary transportation issues.\*

**Afternoon National Slaughter Cattle Review for 05/27/22**

So far for Friday in the Western Cornbelt negotiated cash trading has been limited on light demand. A few live purchases traded at 142.00. In the Southern and Northern Plains negotiated cash trading has been mostly inactive with light demand. Not enough purchases in any region for a full market trend. In the Southern Plains Tuesday was the last reported market with live purchases at 137.00. In Nebraska Wednesday was the last reported market with live purchases at 140.00 and dressed purchases at 223.00. In the Western Cornbelt Thursday was the last reported live purchase market with purchases from 141.00-142.00. In the Western Cornbelt last week dressed purchases traded from 223.00-227.00. Last week in Colorado live purchases traded at 142.00.

Negotiated Cash Sales:			
Confirmed:	4112	Week Ago:	923
Year Ago:	536	Week to date:	77,270
Week Ago:	86,310	Year Ago:	82,657
Live Basis	Steers	Heifers	
Over 80% Choice	138.00-142.00, avg 141.48	142.00	
65-80% Choice	-	136.00-137.00, avg 136.39	
35-65% Choice	-	-	
0-35% Choice	-	-	
Total All Grades	138.00-142.00, avg 141.48	136.00-142.00, avg 139.82	
Dressed Basis			
Over 80% Choice	223.00-225.00, avg 223.67	-	
65-80% Choice	-	-	
35-65% Choice	-	-	
0-35% Choice	-	-	
Total All Grades	223.00-225.00, avg 223.67	-	

**MISSOURI WEEKLY HAY SUMMARY 05/26/22**

Another week with limited days for field work as on and off rains continue to fall across the state. Despite this, farmers have made impressive progress over the last couple of weeks. As of Monday,, hay harvest for both alfalfa and other hay are slightly ahead of the five year average now. Spring planting for both corn and beans are a couple points behind the five year average. There continues to be what seems like more than usual interest in hay for this time of year, a lot being equine owners looking to get needs contracted early. Hay prices are steady to firm, supplies are light to moderate but will increase as more hay is baled in the coming weeks, Demand is moderate. The Missouri Department of Agriculture has a hay directory visit <http://mda.mo.gov/abd/haydirectory/> for listings of hay <http://agebb.missouri.edu/haylst/>

Please Note: The above volumes (tonnage, acres, and bales) listed on this USDA LPGMN report are for confirmed trades only, it does not include estimated volume (tonnage) for bids or offers to the trade.

- Alfalfa - Supreme 225.00-275.00, small square 8.00-12.00 per bale
- Alfalfa - Premium 175.00-225.00
- Alfalfa - Good 120.00-180.00, small square 5.00-9.00 per bale
- Alfalfa - Fair 100.00-125.00
- Alfalfa/grass mix - Good/Premium small square 6.00-8.00 per bale
- Mixed grass - Good/Premium 80.00-140.00
- Mixed grass - Fair/Good 60.00-100.00, small square 4.00-6.00 per bale
- Mixed grass - Fair 25.00-55.00 per large round bale
- Wheat straw - 4.00-6.00 per small square bale