

Weekly Market Summary

Published by:
Missouri Department of Agriculture
Ag Business Development Division
Market News Program



Chris Chinn, Director
 Jill Wood, Division Director
 Tony Hancock, Editor
<http://www.ams.usda.gov/marketnews.htm>
agmarketnews.mo.gov

Michael L. Parson, Governor

Volume XLII, Number 22 ♦ P.O. Box 630, Jefferson City, MO 65102 ♦ (573) 751-4211 ♦ Monday, June 06, 2022

MISSOURI WEEKLY FEEDER CATTLE WEIGHTED AVERAGE REPORT

Receipts: 14,285 Week ago: 29,138 Year ago: 17,091

Steers and Heifers Medium and Large 1—Weighted average weights and prices

STEERS: Medium and Large 1

323 lbs. 207.24	525 lbs. 198.98	721 lbs. 167.69
376 lbs. 205.78	575 lbs. 189.67	762 lbs. 159.05
425 lbs. 209.25	621 lbs. 180.82	816 lbs. 151.79
477 lbs. 203.94	676 lbs. 171.74	881 lbs. 160.87

HEIFERS: Medium and Large 1

329 lbs. 186.32	524 lbs. 168.65	714 lbs. 154.99
376 lbs. 175.02	574 lbs. 164.37	764 lbs. 153.47
423 lbs. 178.81	625 lbs. 162.30	813 lbs. 145.21
474 lbs. 170.95	662 lbs. 159.28	861 lbs. 134.85

Missouri Steer (Heifer) Stocker Formula for 6/06/2022

Monday's Missouri Stocker Formula consists of **3809 (3711)** head with a weighted average weight of **540.44 (531.61)** lbs. and a price value of **188.49 (163.07)**, 0.41 higher (0.19 higher) than last Monday.

This a rolling seven day calculated weighted value which combines all Feeder Steers reported by MDA/USDA Market News Service weighing from 400-649 lbs. in the Medium and Large 1 and Medium and Large 1-2 frame and muscle classifications, including all comment cattle except Brahman X. Heifer values are in parentheses.

SOUTH CENTRAL MISSOURI WEEKLY SUMMARY

(West Plains, Ava)

Receipts: 3596 Week ago: 7029 Year Ago: 4476

Compared to last week, early week calves 3.00 to 6.00 lower on comparable sales, late week steers and heifers mostly steady to firm on comparable sales. Slaughter cows and bulls steady to 2.00 higher.

FEEDER STEERS:

Medium and Large 1

300-400 lbs.	200.00-220.00
400-500 lbs.	189.00-208.00
500-600 lbs.	171.00-195.00
600-700 lbs.	164.00-178.50
700-800 lbs.	156.50-168.00
13 hd 810 lbs.	151.00

FEEDER HEIFERS:

Medium and Large 1

350-400 lbs.	165.00-176.00
400-500 lbs.	156.00-174.00
500-600 lbs.	151.50-164.00

FEEDER HOLSTEIN STEERS

Large 3

Scarce Scarce

SLAUGHTER COWS: Breaking and Boning (70-85% lean) 69.50-87.00, high dressing 82.00-94.00; low dressing 65.00-78.00. Lean (85-90%) 60.00-76.00

SLAUGHTER BULLS: Yield Grade 1-2 1110-2315 lbs. 97.00-112.00; high dressing 112.00-122.50; low dressing 71.00-99.00

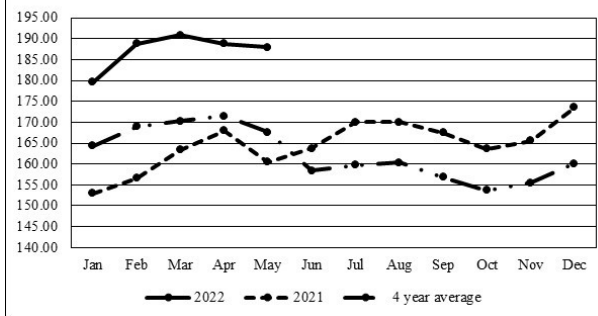
BRED COWS: Medium and Large 1 2-8 yrs few 1165-1265 lbs 2nd to 3rd stage 1125.00-1200.00 per head. Medium and Large 1-2 2-8 yrs 940-1550 lbs 2nd to 3rd stage 875.00-1275.00 per head.

BRED HEIFERS: Medium and Large 1-2 yearlings 775-925 lbs 1st to 3rd stage 850.00-1025.00 per head

COW & CALF PAIRS: Medium and Large 1-2 2-8 yrs 1125-1198 lbs with 150-300 lb calves 1350.00-1475.00 per pair. Medium and Large 2 2-8 yrs 1075-1155 lbs with 150-300 lb calves 1100.00-1300.00 per pair

The Weekly Market Summary, as well as historical summaries, are available on our website <https://agmarketnews.mo.gov/summaries>
 Market News Hotline: 1-573-522-9244

Missouri Stocker Formula - Steers



*Graph is updated the first Monday of each month.

SOUTHWEST MISSOURI WEEKLY SUMMARY

(Joplin and Springfield)

Receipts: 3437 Week Ago: 8454 Year ago: 3374

Compared to last week, feeder steers mostly steady, spots up to 3.00 higher on 500-600 lbs. Feeder heifers steady. Slaughter cows 2.00 to 4.00 higher. Slaughter bulls steady.

FEEDER STEERS:

Medium and Large 1

300-400 lbs.	199.00-209.00
450-500 lbs.	193.00-196.00
500-600 lbs.	170.00-198.00
600-700 lbs.	155.00-176.00
Few 700-800 lbs.	153.00-156.00
Few 800-900 lbs.	140.00-144.00

FEEDER HEIFERS:

Medium and Large 1

350-400 lbs.	169.00-170.00
400-500 lbs.	158.00-167.00
500-600 lbs.	147.00-162.50
600-700 lbs.	140.00-148.00

FEEDER HOLSTEIN STEERS

Large 3

Scarce Scarce

SLAUGHTER COWS: Breaking and Boning (70-85% lean) 70.00-83.00, high dressing 79.00-93.00; low dressing 60.00-73.00. Lean (85-90%) 60.00-75.00

SLAUGHTER BULLS: Yield Grade 1-2 1275-2400 lbs. 99.00-111.00; high dressing 113.00-119.00; low dressing 76.00-99.00

BRED COWS: Medium and Large 1 2-8 yrs 1080-1390 lbs 2nd to 3rd stage 1250.00-1500.00 per head. Medium and Large 1-2 2-8 yrs 940-1248 lbs 2nd to 3rd stage 950.00-1360.00, 1st stage 750.00 per head

COW & CALF PAIRS: Medium and Large 1-2 2-8 yrs 870-1140 lbs with baby to over 300 lb calves 950.00-1550.00 per pair

WEST CENTRAL MISSOURI WEEKLY SUMMARY

(Kingsville, Windsor, Butler)

Receipts: 3953 Week ago: 5795 Year ago: 5081

Compared to last week, steers and heifers steady to 6.00 higher. Slaughter cows steady to 3.00 higher.

FEEDER STEERS:

Medium and Large 1

400-500 lbs. 194.50-220.50
500-600 lbs. 179.00-213.50
600-700 lbs. 170.00-188.00
700-750 lbs. 160.00-171.00
121 hd 871 lbs. 152.10

FEEDER HEIFERS:

Medium and Large 1

400-500 lbs. 168.50-188.75
500-600 lbs. 156.75-181.00
600-700 lbs. 148.00-175.50
700-800 lbs. 151.50-159.75
Pkg 811 lbs. 148.10
Pkg 879 lbs. 131.50

SLAUGHTER BULLS: Yield Grade 1-2 1095-2245 lbs. 97.50-116.00; high dressing 109.00-125.50; low dressing 90.00-101.00

SLAUGHTER COWS: Breaking and Boning (70-85% lean) 73.50-88.50, high dressing 82.00-95.00. Lean (85-90%) 63.00-75.00

BRED COWS: Medium and Large 1 2-8 yrs 1295-1435 lbs 2nd to 3rd stage 1360.00-1460.00. Medium and Large 1-2 2-8 yrs 962-1420 lbs 2nd to 3rd stage 950.00-1260.00 per head

COW & CALF PAIRS: Medium and Large 1-2 2-8 yrs 1000-1250 lbs with 150-300 lb calves 1125.00-1250.00 per pair

NORTHEAST MISSOURI WEEKLY SUMMARY

(Bowling Green, Kingdom City, Palmyra)

Receipts: 1454 Week ago: 5555 Year ago: 1582

Compared to last week, this week's shortened sale volume was not tested due to early week sales closed and very light receipts from mid-week on.

FEEDER STEERS:

Medium and Large 1

Pkg 428 lbs. 200.00
500-600 lbs. 190.00-199.50
Pkg 701 lbs. 160.00

FEEDER HEIFERS:

Medium and Large 1-2

400-500 lbs. 162.50-176.00
500-600 lbs. 152.50-160.00
600-700 lbs. 147.50-153.50
700-800 lbs. 138.50-144.50

SLAUGHTER BULLS: Yield Grade 1-2 couple 1405-2445 lbs. 107.00-110.00; high dressing 114.00-137.50

SLAUGHTER COWS: Breaking and Boning, (70-85% lean) 79.00-87.00; high dressing 87.00-100.00; low dressing 65.00-75.00. Lean (85-90%) 70.50-77.00

SLAUGHTER STEERS: Choice 2-3 144.00-146.00. Select 1-2 130.00-132.00.

BRED COWS: Medium and Large 1-2 2-4 yrs 1224 lbs 2nd stage 1650.00; 2-8 yrs 1065-1600 lbs 2nd stage 1225.00-1575.00 per head

SLAUGHTER HEIFERS: Choice and Prime 2-3 149.00-150.00. Select 1-2 131.00-132.00

COW & CALF PAIRS: Medium and Large 1 2-4 yrs 1050-1150 lbs with 150-300 lb calves 2000.00-2125.00; 2-8 yrs 1050-1250 lbs with 150-300 lb calves 1850.00-2000.00 per pair

NORTH CENTRAL MISSOURI WEEKLY SUMMARY

(Macon, Unionville, Green City, New Cambria)

Receipts: 4883 Week ago: 1659 Year ago: 4032

Compared to the most recent sales, feeders traded firm to 5.00 higher, except some light weight steer calves late week 1.00 to 3.00 lower. Slaughter cows steady to 3.00 higher.

FEEDER STEERS:

Medium and Large 1

400-500 lbs. 203.00-225.00
500-600 lbs. 187.00-216.00
600-700 lbs. 173.00-198.00
700-800 lbs. 158.50-176.75
800-900 lbs. 147.00-169.00

FEEDER HEIFERS:

Medium and Large 1

400-500 lbs. 166.00-195.00
500-600 lbs. 160.00-184.00
600-700 lbs. 146.00-169.00
700-800 lbs. 150.00-163.25

SLAUGHTER BULLS: Yield Grade 1-2 1140-2205 lbs 89.00-109.50; high dressing 103.00-122.50; low dressing few 81.00-89.00

SLAUGHTER COWS: Breaking and Boning, (70-85% lean) 70.00-83.50; high dressing 77.50-90.00; low dressing 64.00-74.50. Lean (85-90%) 57.00-70.00

BRED COWS: Medium and Large 1 2-8 yrs 1000-1230 lbs 2nd to 3rd stage 1000.00-1325.00 per head

COW & CALF PAIRS: Medium and Large 1 2-8 yrs 1000-1420 lbs with 150-300 lb calves 1525.00-1900.00; 2-8 yrs 1045-1052 lbs rebred 1st to 2nd stage with over 300 lb calves 1400.00-1800.00 per pair

SOUTHEAST MISSOURI WEEKLY SUMMARY

(Jackson and Farmington)

Receipts: 1179 Week ago: 1105 Year ago: 1741

Compared to last week, steers and heifers steady to 7.00 higher. Slaughter cows and bulls steady.

FEEDER STEERS:

Medium and Large 1

300-400 lbs. 180.00-202.00
400-500 lbs. 182.00-200.00
500-600 lbs. 177.00-192.00
600-700 lbs. 150.00-179.00
700-800 lbs. 140.00-150.00

FEEDER HEIFERS:

Medium and Large 1

300-400 lbs. 152.00-172.00
400-500 lbs. 152.00-174.00
500-600 lbs. 145.00-170.00
650-700 lbs. 139.00-140.00

SLAUGHTER BULLS: Yield Grade 1-2 1650-2120 lbs. ind 100.00, high dressing 108.00-122.00

SLAUGHTER COWS: Breaking and Boning (75-85% lean) 70.00-76.00; high dressing 77.00-90.00. Lean (85-90% lean) 55.00-69.00

BRED COWS: Scarce

COW & CALF PAIRS: Scarce

EAST CENTRAL MISSOURI WEEKLY SUMMARY

(Cuba, Vienna)

Receipts: 1786 Week ago: 4347 Year ago: 2397

Compared to last week, feeder steers steady, except some near 575 lbs 2.00 to 3.00 higher. Feeder heifers steady to 2.00 higher. Slaughter cows steady to 2.00 higher.

FEEDER STEERS:

Medium and Large 1

300-400 lbs. 201.00-215.00
400-500 lbs. 195.00-210.00
500-600 lbs. 178.00-200.00
600-700 lbs. 166.00-183.00
750-800 lbs. 159.00-165.25

FEEDER HEIFERS:

Medium and Large 1

300-400 lbs. 178.00-187.00
400-500 lbs. 167.50-187.00
500-600 lbs. 159.00-174.00
600-700 lbs. 149.25-160.75
700-750 lbs. 144.00-152.50
18 hd 855 lbs. 136.00

SLAUGHTER BULLS: Yield Grade 1-2 1490-2010 lbs. 98.00-108.00; low dressing ind 73.00

SLAUGHTER COWS: Breaking and Boning (70-85% lean) 78.00-85.50; high dressing 85.50-87.00. Lean (85-90%) 68.00-76.50

BRED COWS: Medium and Large 1-2 5-8 yrs few 995-1205 lbs 2nd stage 970.00-1030.00 per head

COW & CALF PAIRS: Scarce

MISSOURI WEEKLY DIRECT SLAUGHTER

CATTLE REPORT 06/03/22

Weekly Receipts: 600 Week ago: 120 Year ago: 320

Trading as of Friday morning: light to moderate with flat dressed sales 3.00 lower and grid dressed sales inactive.

LIVE STEERS & HEIFERS:

No Sales Reported

DRESSED STEERS & HEIFERS:

15 loads Tue and Wed 222.00 flat

GRADE AND WEIGHT (Grid): No Sales Reported

NATIONAL DIRECT DELIVERED FEEDER PIG REPORT

06/03/22 Receipts: 73,817 Week ago: 82,870 Year Ago: 84,858 Weaned pigs and feeder pigs mostly steady to weak. Early weaned pigs 10-12 lbs. basis: Formula 31.41-50.02, weighted average 41.64. Cash 23.00-49.75, weighted average 40.73. Feeder pigs 40 pounds basis: Cash 60.00-79.00, weighted average 72.85

NATIONAL DAILY DIRECT PRIOR DAY HOG REPORTS

FOR 06/03/22

BARROWS AND GILTS (Carcass Basis): 8,887 head

Base Carcass Price, 100.00-120.00, weighted average 115.09

SOWS (Live Basis): 7,389 head

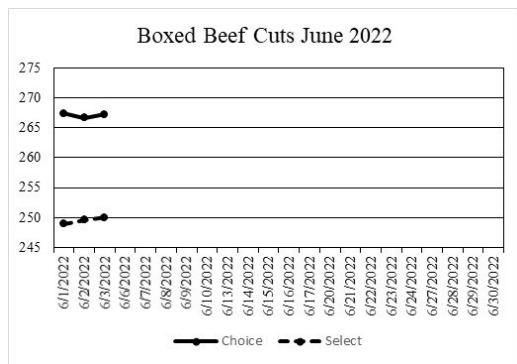
300-500 lbs. 28.00-64.00
Over 500 lbs. 38.22-68.50

WHOLESALE FEEDSTUFFS PRICES 06/03/22
(DOLLARS PER TON-BULK BASIS)

Area	Soybean Hulls - Pellets	Cottonseed Meal 41%	Corn Gluten Pellets	Wheat Middlings
Kansas City	225.00	405.00	267.50	202.50
St. Louis	N/A	400.00	285.00	195.00

NATIONAL BOXED BEEF CUTOUT/BOXED BEEF CUTS

Date	Choice	Select	Total Loads
5/27	265.42	246.50	106
5/31	267.54	248.65	144
6/1	267.42	248.91	146
6/2	266.65	249.63	131
6/3	267.26	250.02	88
5 Day Simple Average	267.22	249.30	



Missouri Weekly Sheep/Goat Auction Summary 06/03/22

Receipts: 1650 Week Ago: 2537 Last Year: 1418
All prices CWT unless otherwise noted.

SHEEP: Slaughter lambs wooled and shorn Choice and Prime 1-3 pkg 38 lbs 280.00; pkg 48 lbs 260.00; 50-60 lbs 220.00-245.00; 70-80 lbs 205.00-232.50; lot 80 lbs 237.50. Choice 1-3 pkg 46 lbs 210.00; lot 68 lbs 205.00; 70-80 lbs 190.00-205.00. Hair Choice and Prime 1-3 25-40 lbs 265.00-310.00, fancy 370.00; 40-50 lbs 245.00-270.00; 50-60 lbs 255.00-305.00; 60-70 lbs 240.00-275.00; 70-100 lbs 230.00-280.00. Choice 1-3 30-80 lbs 205.00-240.00. Good 1-2 40-70 lbs 187.50-195.00. Slaughter ewes Good 2-3 pkg 134 lbs 120.00. Utility and Good 1-3 pkg 92 lbs 130.00; 145-155 lbs 105.00. Hair Good 2-3 75-130 lbs 160.00-225.00, fancy 265.00. Utility and Good 1-3 95-135 lbs 120.00-155.00. Cull and Utility 1-2 95-125 lbs 100.00-105.00. Hair bucks 1-2 130-140 lbs 130.00-160.00; 160-165 lbs 115.00-145.00.

GOATS: Feeder kids Selection 1 25-50 lbs 340.00-395.00. Selection 2 20-50 lbs 250.00-335.00. Selection 3 25-45 lbs 155.00-240.00, pygmies 213.00-220.00. Slaughter kids Selection 1 50-70 lbs 330.00-390.00. Selection 2 50-70 lbs 280.00-325.00; 70-80 lbs 230.00-305.00. Selection 3 50-60 lbs 195.00-240.00, pygmies 177.50. Slaughter nannies/does Selection 1-2 55-70 lbs 130.00-200.00; 70-80 lbs 180.00-195.00; 80-90 lbs 130.00-265.00; 90-100 lbs 150.00-170.00; 100-180 lbs 105.00-200.00. Slaughter bucks/billies 100-190 lbs 167.50-250.00, pygmies 155.00-200.00. Wethers Selection 3 55-105 lbs 175.00-200.00. Wether kids Selection 2 50-75 lbs 280.00-290.00.

Replacements: Nannies/does Selection 1 1-2 yrs 60 lbs open 335.00. Families Selection 1-2 2-4 yrs 80 lbs with baby to 20 lb kids 210.00-420.00 per family

Explanatory Notes: Stage - Represents estimated lambing/kidding period (Open, Exposed, Bred, Fall = Sep-Nov, Win = Dec-Feb, Spr = Mar-May, Sum=Jun-Aug

WEEKLY COMMODITY GRAIN FUTURES TRENDS

Compared to last week, Soybeans 0.16 to 0.35 lower, Wheat 0.90 to 1.17 lower, Corn 0.37 to 0.50 lower, KC Wheat 0.92 to 1.14 lower, Soybean Meal 24.40 to 26.30 lower.

Daily Grain Futures Closes

	Mon.	Tues.	Wed.	Thu.	Fri.
Soybeans					
Jul	Holiday	1683 1/4	1690 1/4	1729 1/4	1697 3/4
Aug		1620 1/4	1625	1658 3/4	1633 3/4
Sep		1544 3/4	1550 1/4	1508 1/2	1559 3/4
Nov		1509 1/2	1515 1/4	1541 3/4	1527
Jan		1514 1/4	1520	1545 1/4	1531
Wheat					
Jul	Holiday	1087 1/2	1041 1/4	1058 1/4	1040
Sep		1097 1/7	1052 1/4	1069 3/4	1051 3/4
Dec		1107	1063 3/4	1081	1063
Mar		1112	1070 1/4	1088 3/4	1072 1/2
May		1102 1/2	1063 1/4	1088 3/4	1076 1/2
Corn					
Jul	Holiday	753 1/4	731 1/4	730 1/4	727
Sep		725	703 3/4	704 3/4	701 1/4
Dec		711 1/2	691 1/2	694 1/4	690
Mar		716 1/2	696 1/2	699 1/4	695 1/4
May		716 3/4	697 3/4	700 1/2	696 3/4
KC Wheat					
Jul	Holiday	1165 1/2	1128 1/4	1143 1/2	1121
Sep		1172	1135 1/4	1150 1/4	1128 1/4
Dec		1181	1145	1160	1138 1/4
Mar		1183 1/4	1149	1164 3/4	1143 1/2
May		1165	1131 1/4	1152 3/4	1133 1/2
SB Meal					
Jul	Holiday	414.80	412.70	414.90	407.90
Aug		410.40	407.10	408.40	401.00
Sep		406.30	402.10	402.20	394.70
Oct		401.20	397.00	397.30	389.50
Dec		402.00	398.40	399.00	390.90

WEEKLY COMMODITY FUTURES TRENDS

Compared to last week, Live Cattle 1.43 to 2.35 higher, Lean Hogs 0.02 to 0.97 lower, Aug 2.40 lower, Feeder Cattle 5.75 to 7.55 higher.

Daily Futures Closes

	Mon.	Tues.	Wed.	Thu.	Fri.
Cattle					
Jun	Holiday	130.52	132.80	133.62	133.60
Aug		130.37	132.90	134.12	133.85
Oct		136.15	137.90	139.62	139.70
Dec		142.30	143.75	145.90	146.22
Feb		147.52	148.90	150.97	151.22
Lean Hogs					
Jun	Holiday	107.97	109.80	110.05	110.20
Jul		108.00	112.42	112.17	110.75
Aug		106.42	108.92	109.75	108.05
Oct		93.05	93.85	94.30	93.95
Dec		86.77	87.05	87.47	86.95
Fdr Cat					
Aug	Holiday	165.12	169.72	172.95	173.87
Sep		168.12	172.40	175.47	176.30
Oct		170.70	174.77	177.67	178.27
Nov		172.72	176.57	179.15	179.65
Jan		172.87	176.90	179.45	179.87
Milk					
May	Holiday	25.20	—	—	—
Jun		24.57	24.45	24.32	24.33
Jul		24.69	24.70	24.73	24.60

WEEKLY LIVESTOCK SLAUGHTER 06/04/22

	Cattle	Hogs	Sheep
Week to Date:	603,000	2,044,000	30,000
Last Week:	644,000	2,344,000	35,000
Last Year:	544,000	1,987,000	32,000

Missouri Weekly Cattle Auction Summary 06/06/22

Receipts: 14,285 Week ago: 29,138 Year ago: 17,091

Compared to last week feeders sold steady to 3.00 higher, with some spots of 5.00 to 8.00 higher on some of the tops of better quality calves or load lots of yearlings. As a whole, the supply of feeders was much lighter supply on a short holiday week. A few early week barns remained dark or had lighter offerings once mid-week arrived however, markets found support and most of the gains were evident especially those sales in the north. A few of the top sales this week included 7 loads of steers from 850-900 lbs. which sold on Tuesday at Unionville Livestock Market from 161.10-164.10. Then two days later on Thursday, at New Cambria Livestock Market a short load of 41 head of 851 lb. steers sold for 169.00. Another very impressive ticket on a load of 430 lb. steer calves at South Central Regional Stockyards on Wednesday which climbed to 215.50 when the hammer fell. Boxed beef cutouts closed higher for the week with choice at 267.26, up 1.84 and select at 250.02, up 3.52 from the previous week. Negotiated feedlot sales as of Friday afternoon totaled about 85,500 head. Live sales were reported mostly from 135.00-140.00 and dressed sales at 222.00. Monday's Missouri Stocker Formula consists of 3809 (3711) head with a weighted average weight of 540.44 (531.61) lbs and a price value of 188.49 (163.07), 0.41 higher (0.19 higher) than last Monday.

MISSOURI GRAIN WEEKLY TRENDS

Compared to last week, Soybeans 0.24 to 0.39 lower, Wheat 1.17 lower, Corn 0.45 to 0.53 lower, Sorghum 0.40 to 0.44 lower.

Area	#1 Soybeans	#2 Soft Wheat	#2 Corn	#2 Grain Sorghum
Kansas City				
Friday**	17.28-17.43	11.31	7.87-8.22	7.20
Monday	Holiday	Holiday	Holiday	Holiday
Tuesday	16.85-17.00	10.62	7.63-7.98	7.01
Wednesday	16.85-17.10	10.17	7.41-7.76	6.82
Thursday	17.19-17.44	10.35	7.40-7.75	6.84
Friday	16.94-17.19	10.17	7.37-7.77	6.80
St. Louis				
Friday**	18.21	11.66	8.29	7.07
Monday	Holiday	Holiday	Holiday	Holiday
Tuesday	17.72	10.62-10.97	8.05	6.83
Wednesday	17.71	10.16-10.52	7.76	6.61
Thursday	18.12	10.36-10.70	7.79	—
Friday	17.82	10.18-10.52	7.76	6.57
Central				
Friday**	17.47	—	7.97-8.02	—
Monday	Holiday	—	Holiday	—
Tuesday	16.98	10.32-10.47	7.73-7.78	—
Wednesday	17.05-17.15	10.02-10.12	7.51-7.66	—
Thursday	17.44	10.15-10.30	7.50-7.55	—
Friday	17.13	9.97-10.12	7.47-7.52	—
S.E. MO				
Friday**	17.67-17.88	—	7.97-8.15	—
Monday	Holiday	—	Holiday	—
Tuesday	17.38	10.32-10.49	7.53-7.88	—
Wednesday	17.45	9.86-10.04	7.31-7.66	—
Thursday	17.84	10.03-10.21	7.30-7.65	—
Friday	17.43-17.53	9.85-10.00	7.27-7.62	—

(PRICES PER BUSHEL) *NEW CROP **PREVIOUS WEEK'S PRICES
Most locations not providing cash wheat bids at this time, due to temporary transportation issues.

Afternoon National Slaughter Cattle Review for 06/03/22

Thus far for Friday negotiated cash trading has been limited on light demand in Kansas, Nebraska, and the Western Cornbelt. Not enough purchases for a market trend. Negotiated cash trading has been at a standstill in the Texas Panhandle. Wednesday was the last reported market in any region. In the Southern Plains live purchases traded at 135.00. In Nebraska live and dressed purchases traded at 139.00 and 222.00, respectively. In the Western Cornbelt live and dressed purchases traded at 140.00 and 222.00, respectively.

Negotiated Cash Sales:					
Confirmed:	6,314	Week Ago:	4,112	Year Ago:	6,312
Week to date:	82,507	Week Ago:	77,270	Year Ago:	64,706
Live Basis		Steers		Heifers	
Over 80% Choice		135.00-142.00, avg 141.54		141.00-143.00, avg 141.39	
65-80% Choice		-		-	
35-65% Choice		-		-	
0-35% Choice		-		-	
Total All Grades		135.00-142.00, avg 141.54		141.00-143.00, avg 141.39	
Dressed Basis					
Over 80% Choice		223.00-224.00, avg 223.66		-	
65-80% Choice		222.00-224.00, avg 223.46		224.00-	
35-65% Choice		-		-	
0-35% Choice		-		-	
Total All Grades		222.00-224.00, avg 223.55		224.00	

MISSOURI WEEKLY HAY SUMMARY 06/02/22

Several farmers found a few fields they could get into late last week and over the weekend. Limited short windows of any extended dry periods has made haying difficult, but farmers have made progress and both 1st cutting of alfalfa and other hay types is basically right on par with the five year average. Hay supply is moderate and demand is light to moderate. Hay prices are steady to firm. The Missouri Department of Agriculture has a hay directory visit <http://mda.mo.gov/abd/haydirectory/> for listings of hay <http://agebb.missouri.edu/haylst/>

- Alfalfa - Supreme 225.00-275.00, small square 8.00-12.00 per bale
- Alfalfa - Premium 175.00-225.00
- Alfalfa - Good 120.00-180.00, small square 5.00-9.00 per bale
- Alfalfa - Fair 100.00-125.00
- Alfalfa/grass mix - Good/Premium small square 6.00-8.00 per bale
- Mixed grass - Good/Premium 80.00-140.00
- Mixed grass - Fair/Good 60.00-100.00, small square 4.00-6.00 per bale
- Mixed grass - Fair 25.00-55.00 per large round bale
- Wheat straw - 4.00-6.00 per small square bale

Please Note: The above volumes (tonnage, acres, and bales) listed on this USDA LPGMN report are for confirmed trades only, it does not include estimated volume (tonnage) for bids or offers to the trade.