

Weekly Market Summary

Published by:
Missouri Department of Agriculture
Ag Business Development Division
Market News Program



Chris Chinn, Director
 Jill Wood, Division Director
 Tony Hancock, Editor
<http://www.ams.usda.gov/marketnews.htm>
<http://www.ams.usda.gov/marketnews.htm>

Michael L. Parson, Governor

Volume XLII, Number 24 ♦ P.O. Box 630, Jefferson City, MO 65102 ♦ (573) 751-4211 ♦ Monday, June 20, 2022

MISSOURI WEEKLY FEEDER CATTLE WEIGHTED AVERAGE REPORT

Receipts: 19,985 Week ago: 37,995 Year ago: 17,994

Steers and Heifers Medium and Large 1—Weighted average weights and prices

STEERS: Medium and Large 1

335 lbs. 208.96	524 lbs. 193.15	728 lbs. 164.77	1059 lbs. 135.19
375 lbs. 215.23	575 lbs. 187.26	775 lbs. 158.56	
427 lbs. 201.83	621 lbs. 175.11	814 lbs. 160.24	
470 lbs. 199.41	670 lbs. 172.43	884 lbs. 156.68	

HEIFERS: Medium and Large 1

328 lbs. 169.00	525 lbs. 166.92	727 lbs. 151.90
375 lbs. 177.57	572 lbs. 158.75	777 lbs. 144.18
431 lbs. 177.54	622 lbs. 156.21	819 lbs. 137.36
477 lbs. 171.64	680 lbs. 159.80	

Missouri Steer (Heifer) Stocker Formula for 6/20/2022

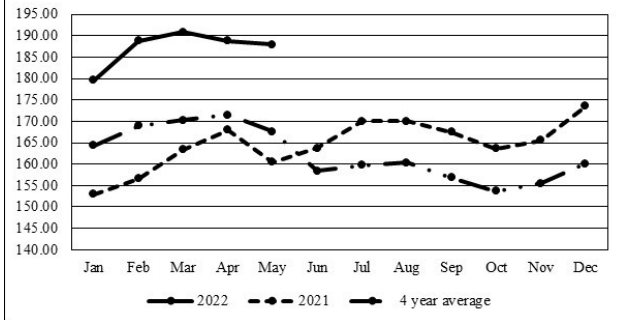
Monday's Missouri Stocker Formula consists of **4765 (4433)** head with a weighted average weight of **548.34 (536.32)** lbs. and a price value of **183.30 (159.32)**, 6.30 lower (5.81 lower) than last Monday.

This a rolling seven day calculated weighted value which combines all Feeder Steers reported by MDA/USDA Market News Service weighing from 400-649 lbs. in the Medium and Large 1 and Medium and Large 1-2 frame and muscle classifications, including all comment cattle except Brahman X. Heifer values are in parentheses.

Missouri Weekly Cattle Auction Summary 06/20/22

Compared to last week, feeders under 700 lbs. sold mostly 2.00 to 7.00 lower with some instances of 10.00 lower, heavier weights sold steady to 3.00 lower. The supply of feeders was much lighter this week, only slightly more than half of last week. Record breaking heat across the state kept movement of livestock limited, as the heat was quite dangerous and made transporting cattle quite challenging. Haying was in full swing around the state, although there were a few spots in northern Missouri that received some pop up type of storms. However, most had no worries of rains. Although not at all official, various conversations from many parts of the state seem to point to hay yields twenty-five to thirty percent less than last year. Parts of about 10 counties in the south central part of the state have reappeared on the drought monitor. Boxed beef cutouts were lower for the week, choice closed at 266.26, down 5.06 and select at 246.53, down 2.36 compared to last Friday. As of Friday afternoon, negotiated feedlot sales totaled 105K head. A large spread has developed from the south to the north on live sales with a range mostly 136.00 to 145.00, although not the bulk of the sales but a few live sales late in the week in the north were reported up to 148.00. Dressed sales were reported at mostly 230.00 this week. The Missouri Stocker Formula consists of 4765 head with a weighted average weight of 548.34 lbs. and a price value of 183.30, 6.30 lower than last week. The steer/heifer spread is 23.98.

Missouri Stocker Formula - Steers

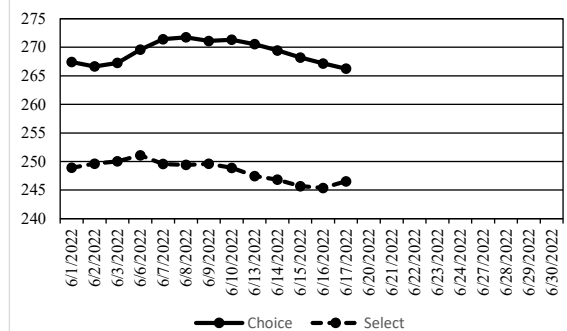


*Graph is updated the first Monday of each month.

NATIONAL BOXED BEEF CUTOUT/BOXED BEEF CUTS

DATE	CHOICE	SELECT	TOTAL LOADS
06/13	270.54	247.45	93
06/14	269.44	246.82	135
06/15	268.22	245.68	134
06/16	267.16	245.38	128
06/17	266.26	246.53	106
5 Day Simple Average	268.32	246.37	

Boxed Beef Cuts June 2022



WEEKLY LIVESTOCK SLAUGHTER 06/18/22

	Cattle	Hogs	Sheep
Week to Date:	667,000	2,372,000	33,000
Last Week:	674,000	2,372,000	34,000
Last Year:	664,000	2,444,000	34,000

The Weekly Market Summary, as well as historical summaries, are available on our website <https://agmarketnews.mo.gov/summaries>
 Market News Hotline: 1-573-522-9244

SOUTHWEST MISSOURI WEEKLY SUMMARY

(Joplin and Springfield)

Receipts: 7849 Week Ago: 13,680 Year ago: 8214

Compared to last week, steers and heifers 2.00 to 10.00 lower. Slaughter cows 3.00 to 6.00 higher. Slaughter bulls steady to 5.00 higher.

FEEDER STEERS:
Medium and Large 1

300-400 lbs.	207.00-225.00
400-500 lbs.	190.00-205.00
500-600 lbs.	171.50-202.50
600-700 lbs.	155.00-178.00
700-800 lbs.	153.00-166.00
800-900 lbs.	142.00-159.25
Pkg 930 lbs.	149.00

FEEDER HEIFERS:
Medium and Large 1

350-400 lbs.	170.00-173.00
400-500 lbs.	155.00-171.00
500-600 lbs.	144.00-166.00
600-700 lbs.	140.00-156.00
700-800 lbs.	144.00-145.00
800-850 lbs.	137.00-139.00

FEEDER HOLSTEIN STEERS
Large 3

Scarce Scarce

SLAUGHTER COWS: Breaking and Boning (70-85% lean) 75.00-92.50, high dressing 86.00-105.50; low dressing 70.00-78.00. Lean (85-90%) 64.00-80.00

SLAUGHTER BULLS: Yield Grade 1-2 1200-2305 lbs. 100.00-116.00; high dressing 115.00-135.50

BRED COWS: Medium and Large 1 2-8 yrs 1029-1875 lbs 2nd to 3rd stage 1275.00-1535.00; over 8 yrs 1150-1385 lbs 2nd to 3rd stage 1000.00-1200.00 per head. Medium and Large 1-2 2-8 yrs 964-1523 lbs 2nd to 3rd stage 850.00-1275.00, 1st stage 860.00-1000.00; over 8 yrs 915-1342 lbs 2nd to 3rd stage 675.00-1025.00, 1st to 2nd stage 1075.00 per head

COW & CALF PAIRS: Medium and Large 1 2-8 yrs 1438-1779 lbs couple rebred 1st stage with 150-300 lb calves 1550.00-1725.00; 2-8 yrs 1413-2035 lbs couple rebred 2nd stage with over 300 lb calves 1725.00-2100.00 per pair. Medium and Large 1-2 2-8 yrs 970-1630 lbs some rebred 1st stage with 150-300 lb calves 1225.0-1475.00; 2-8 yrs 1420-1755 lbs some rebred 1st stage with over 300 lb calves 1500.00-1625.00 per pair

SOUTH CENTRAL MISSOURI WEEKLY SUMMARY

(West Plains, Ava)

Receipts: 2978 Week ago: 5905 Year Ago: 3914

Compared to last week, a light test of feeders traded with a steady to weak undertone, on comparable sales. Slaughter cows steady to 4.00 higher. Slaughter bulls steady.

FEEDER STEERS:
Medium and Large 1

400-500 lbs.	185.00-198.00
500-600 lbs.	170.00-198.00
600-650 lbs.	163.00-175.00
700-800 lbs.	154.75-163.00
41 hd 857 lbs.	155.50
1000-1050 lbs.	135.00-135.50

FEEDER HEIFERS:
Medium and Large 1

300-400 lbs.	162.00-170.00
400-500 lbs.	153.00-165.00
500-600 lbs.	148.00-156.00
600-700 lbs.	142.00-153.00
63 hd 749 lbs.	143.25

FEEDER HOLSTEIN STEERS
Large 3

Scarce Scarce

SLAUGHTER COWS: Breaking and Boning (70-85% lean) 76.00-88.50, high dressing 88.00-100.00; low dressing 63.00-79.00. Lean (85-90%) 64.00-79.00

SLAUGHTER BULLS: Yield Grade 1-2 1215-2275 lbs. 100.00-113.00; high dressing 114.00-127.00; low dressing 78.00-101.00

BRED COWS: Medium and Large 1-2 2-8 yrs 845-1335 lbs 2nd to 3rd stage 800.00-1225.00 per head.

BRED HEIFERS: few Medium and Large 1-2 2-4 yrs 725-870 lbs 2nd to 3rd stage 700.00-850.00 per head

COW & CALF PAIRS: Medium and Large 1-2 2-8 yrs 1240-1255 lbs with 150-300 lb calves 1350.00-1400.00; over 8 yrs 1212 lbs with 150-300 lb calves 1100.00 per pair

WEST CENTRAL MISSOURI WEEKLY SUMMARY

(Kingsville, Windsor, Butler)

Receipts: 5139 Week ago: 8746 Year ago: 4180

Compared to last week, steers and heifers mostly steady, but uneven in spots mostly 5.00 lower to a few exceptions of 5.00 higher. Slaughter cows mostly 2.00 to 6.00 higher.

FEEDER STEERS:
Medium and Large 1

400-500 lbs.	187.00-218.00
500-600 lbs.	184.50-202.00
600-700 lbs.	165.50-188.00
700-800 lbs.	158.50-170.60
800-850 lbs.	150.50-163.00

FEEDER HEIFERS:
Medium and Large 1

400-500 lbs.	165.00-191.50
500-600 lbs.	155.00-180.00
600-700 lbs.	149.50-172.50
700-800 lbs.	144.50-155.25

SLAUGHTER BULLS: Yield Grade 1-2 1110-2325 lbs. 104.00-116.00; high dressing 119.00-133.00; low dressing 84.50-102.00

SLAUGHTER COWS: Breaking and Boning (70-85% lean) 80.00-96.50, high dressing 88.00-103.00. Lean (85-90%) 67.00-84.00

BRED COWS: Medium 2 5-8 yrs 850-884 lbs 1st to 3rd stage 800.00-875.00 per head

COW & CALF PAIRS: Scarce

NORTHEAST MISSOURI WEEKLY SUMMARY

(Bowling Green, Kingdom City, Palmyra)

Receipts: 2191 Week ago: 6285 Year ago: 2344

Compared to last week's high volume sales, 400-450 lbs 2.00 to 4.00 lower, 450-650 lbs 5.00 to 10.00 lower, pot load of 890 lbs 10.00 lower. Heifers 400-500 lbs 4.00 to 8.00 lower, 500-600 lbs mostly 5.00 to 10.00 lower, 600-725 lbs steady. Slaughter cows firm to 5.00 higher.

FEEDER STEERS:
Medium and Large 1

350-400 lbs.	216.00-223.00
400-500 lbs.	202.00-222.00
500-600 lbs.	184.00-207.00
600-700 lbs.	178.00-189.00
700-800 lbs.	154.50-163.25
60 hd 892 lbs.	155.50

FEEDER HEIFERS:
Medium and Large 1

350-400 lbs.	180.00-187.00
400-500 lbs.	170.00-182.00
500-600 lbs.	160.00-171.00
600-700 lbs.	154.00
700-750 lbs.	145.75-146.50

SLAUGHTER BULLS: Yield Grade 1-2 1275-2115 lbs. 102.00-112.00; high dressing 115.00-135.00; low dressing 92.00-94.00

SLAUGHTER COWS: Breaking and Boning, (70-85% lean) 80.00-92.00; high dressing 92.50-106.00; low dressing 71.00-81.00. Lean (85-90%) 67.00-84.00

SLAUGHTER STEERS: Choice and Prime 2-3 6 hd 150.00. Choice 2-3 141.00-145.00. Select and Choice 2-3 134.00-140.50.

BRED COWS: Medium and Large 1-2 2-8 yrs 1155-1550 lbs 2nd stage 1270.00-1475.00, 1st stage 1100.00-1240.00 per head

SLAUGHTER HEIFERS: Choice 2-3 8 hd 143.00. Select and Choice 2-3 5 hd 135.00. Select 2-3 127.00-133.00

COW & CALF PAIRS: Medium and Large 1-2 2-8 yrs 875-1250 lbs with 150-300 lb calves 1450.00-1525.00 per pair

NORTH CENTRAL MISSOURI WEEKLY SUMMARY

(Macon, Unionville, Green City, New Cambria)

Receipts: 3195 Week ago: 1627 Year ago: 1048

Compared to last week, steers and heifers mostly steady to 5.00 lower, spots up to 8.00 lower on light weight calves. Slaughter cows on a light test traded steady.

FEEDER STEERS:
Medium and Large 1

350-400 lbs.	212.50-227.00
400-500 lbs.	203.00-219.50
500-600 lbs.	188.00-216.00
600-700 lbs.	173.75-200.00
700-750 lbs.	164.50-175.75
800-900 lbs.	158.25-167.25

FEEDER HEIFERS:
Medium and Large 1

400-500 lbs.	187.25-190.00
500-600 lbs.	175.00-201.00
600-700 lbs.	162.25-168.50
700-750 lbs.	156.75-160.00

SLAUGHTER BULLS: Yield Grade 1-2 1350-2065 lbs 103.50-116.00; high dressing ind 116.00; low dressing couple 86.50-90.00

SLAUGHTER COWS: Breaking and Boning, (70-85% lean) 70.50-89.00; high dressing 80.50-98.00; low dressing couple 68.50-78.00. Lean (85-90%) 63.00-81.00

BRED COWS: Scarce

COW & CALF PAIRS: Scarce

SOUTHEAST MISSOURI WEEKLY SUMMARY

(Jackson and Farmington)

Receipts: 1050 Week ago: 1507 Year ago: 1187
 Compared to last week, steers steady to 10.00 lower. Slaughter cows and bulls steady to 2.00 higher.

FEEDER STEERS:

Medium and Large 1

300-400 lbs.	189.00-200.00
400-500 lbs.	172.00-202.00
500-600 lbs.	165.00-192.00
600-700 lbs.	154.50-182.00
700-800 lbs.	140.00-160.00

FEEDER HEIFERS:

Medium and Large 1

300-400 lbs.	154.00-175.00
400-500 lbs.	144.00-170.00
500-600 lbs.	138.00-172.00
600-700 lbs.	139.50-165.00
700-750 lbs.	125.50-139.00

SLAUGHTER BULLS: Yield Grade 1-2 1285-2090 lbs. 90.00-105.50, high dressing 110.00-119.00

SLAUGHTER COWS: Breaking and Boning (75-85% lean) 72.00-79.00; high dressing 75.00-92.00. Lean (85-90% lean) few 55.00-66.00

BRED COWS: Medium 2 couple 2.-8 yrs 860 lbs 3rd stage 775.00 per head

COW & CALF PAIRS: Scarce

EAST CENTRAL MISSOURI WEEKLY SUMMARY

(Cuba, Vienna)

Receipts: 1590 Week ago: 3289 Year ago: 1964
 Compared to last week, steers 2.00 to 12.00 lower and heifers 2.00 to 7.00 lower. Slaughter cows 3.00 to 4.00 higher.

FEEDER STEERS:

Medium and Large 1

400-500 lbs.	180.00-192.25
500-600 lbs.	170.00-192.25
600-700 lbs.	166.50-179.00
35 hd 805 lbs.	153.50

FEEDER HEIFERS:

Medium and Large 1

400-500 lbs.	159.00-183.00
500-600 lbs.	148.00-175.50
600-650 lbs.	152.00-163.50

SLAUGHTER BULLS: Yield Grade 1-2 1225-2365 lbs 105.00-119.00; high dressing ind 133.00; low dressing couple 85.00-100.00

SLAUGHTER COWS: Breaking and Boning, (70-85% lean) 80.00-89.50; high dressing 89.50-92.50; low dressing 78.00-80.00. Lean (85-90%) 70.00-78.00

BRED HEIFERS: Medium and Large 1-2 pkg 925 lbs 2nd stage 1075.00 per head

COW & CALF PAIRS: Medium and Large 1-2 5-8 yrs 1300 lbs with baby to 150 lb calves 1350.00-1435.00 per pair

NORTHWEST MISSOURI WEEKLY SUMMARY

(Tina) (week ending 06/10/22)

Receipts: 2656 Week ago: 0
 No market trend as this is the first sale reported at Tina Livestock Market by MDA/USDA Market News Service.

FEEDER STEERS:

Medium and Large 1

400-500 lbs.	200.00-221.00
500-600 lbs.	193.00-217.75
600-700 lbs.	170.00-191.50
700-750 lbs.	165.00-171.50
58 hd 850 lbs.	168.75

FEEDER HEIFERS:

Medium and Large 1

400-500 lbs.	170.00-187.00
500-600 lbs.	167.00-184.00
600-700 lbs.	163.25-175.00
76 hd 766 lbs.	155.35

SLAUGHTER BULLS: Yield Grade 1-2 1150-1780 lbs couple 107.00-112.00; high dressing couple 115.00-119.00; low dressing few 95.50-103.00

SLAUGHTER COWS: Breaking and Boning, (70-85% lean) 75.00-89.00; high dressing 85.50-93.00; low dressing 73.00-76.00. Lean (85-90%) 68.50-77.50

BRED COWS: Medium and Large 1-2 2-8 yrs 1045-1320 lbs 2nd to 3rd stage 850.00-1275.00 per head

COW & CALF PAIRS: Scarce

AFTERNOON NATIONAL SLAUGHTER

CATTLE REVIEW 06/17/22

So far for Friday in all regions negotiated cash trading has been mostly inactive on light demand. Not enough purchases for a market trend in any region. In the Southern Plains Thursday was the last reported live purchase market at 140.00. In the Western Cornbelt the last reported market was on Wednesday with live and dressed purchases from 140.00-146.00 and at 230.00, respectively. In the Northern Plains Tuesday was the last reported market with live purchases at 145.00, and dressed purchases, in Nebraska, at 230.00.

Negotiated Cash Sales:

Confirmed:	1,478	Week Ago:	11,951	Year Ago:	2,756
Week to date:	104,648	Week Ago:	85,204	Year Ago:	79,029

<u>Live Basis</u>	<u>Steers</u>	<u>Heifers</u>
Over 80% Choice	140.00-145.00, avg 141.35	140.00-141.00, avg 140.75
65-80% Choice	-	138.00-140.00, avg 138.43
35-65% Choice	-	-
0-35% Choice	-	-
Total All Grades	140.00-145.00, avg 141.35	138.00-141.00, avg 139.56
<u>Dressed Basis</u>		
Over 80% Choice	230.00	230.00
65-80% Choice	-	-
35-65% Choice	-	-
0-35% Choice	-	-
Total All Grades	230.00	230.00

WEEKLY COMMODITY FUTURES TRENDS

Compared to last week, Live Cattle 0.32 to 1.82 higher, except Feb 0.48 lower, Lean Hogs Jul and Aug 4.12to 5.53 higher and Oct, Dec, and Feb 0.20 to 1.13 higher, Feeder Cattle 0.78 to 1.52 lower.

Daily Futures Closes

	Mon.	Tues.	Wed.	Thu.	Fri.
Cattle					
Jun	134.00	135.20	137.55	137.75	138.02
Aug	133.87	134.07	136.80	136.30	136.57
Oct	139.92	140.15	142.22	142.07	142.42
Dec	146.05	146.25	147.60	147.67	148.07
Feb	150.55	150.80	151.62	161.61	152.12
Lean Hogs					
Jun	108.00	108.45	—	—	—
Jul	106.67	106.62	108.27	109.57	111.00
Aug	104.40	103.55	104.32	106.02	107.87
Oct	92.67	91.55	91.70	93.07	93.70
Dec	86.12	85.65	85.67	86.47	86.92
Fdr Cat					
Aug	171.32	171.30	173.27	171.30	172.95
Sep	173.60	173.35	175.10	173.22	174.80
Oct	175.32	175.27	176.80	174.97	176.52
Nov	177.00	176.97	178.15	176.47	177.90
Jan	177.20	177.25	177.92	176.67	178.17
Milk					
Jun	24.30	24.31	24.34	24.29	24.30
Jul	24.43	24.25	24.26	23.77	23.56
Aug	24.51	24.39	24.40	24.10	24.13

WEEKLY COMMODITY GRAIN FUTURES TRENDS

Compared to last week, Soybeans 0.29 to 0.43 lower, Wheat 0.36 to 0.38 lower, Corn 0.05 to 0.11 higher, KC Wheat 0.55 to 0.57 lower, Soybean Meal 2.60 to 9.00 higher.

Daily Grain Futures Closes

	Mon.	Tues.	Wed.	Thu.	Fri.
Soybeans					
Jul	1707 1/2	1698 1/2	1693 3/4	1709 1/2	1702
Aug	1627 3/4	1616 1/2	1613 3/4	1630 3/4	1622 1/4
Sep	1553 1/4	1547 1/4	1546	1563	1554 1/4
Nov	1533 3/4	1525 1/4	1523 1/2	1543 1/4	1537 1/2
Jan	1537 1/4	1529 1/4	1527 3/4	1546 3/4	1541 1/4
Wheat					
Jul	1071	1050 1/4	1050	1078 1/4	1034 1/4
Sep	1086	1065 1/4	1063 1/2	1090 1/2	1046 3/4
Dec	1100 1/2	1081 1/4	1078 1/2	1103	1061 1/4
Mar	1110 3/4	1091 1/2	1088 1/4	1111 3/4	1071 3/4
May	1114 3/4	1095 1/4	1091 1/4	1114	1075 1/4
Corn					
Jul	769 1/4	768 1/4	774	788 1/4	784 1/2
Sep	730 3/4	729 1/2	729	741 3/4	737 3/4
Dec	721 1/2	721 1/4	721	735	731
Mar	726 1/2	726 1/4	726 1/4	739 1/2	735 1/4
May	728	728	727 1/2	740	736
KC Wheat					
Jul	1161 3/4	1142 1/4	1133 1/4	1148 1/2	1105
Sep	1168 3/4	1149 1/4	1140 1/4	1155 3/4	1112
Dec	1177 1/2	1157 3/4	1148 1/4	1164 1/4	1121 1/2
Mar	1182	1163 1/4	1153 1/2	1168 3/4	1127 1/4
May	1176 1/4	1157	1148 1/4	1161 1/2	1121
SB Meal					
Jul	415.10	411.00	417.50	429.70	438.10
Aug	405.70	400.60	404.50	415.80	422.50
Sep	398.50	393.90	395.20	408.90	411.70
Oct	392.30	389.50	389.30	399.30	405.20
Dec	393.50	390.80	391.50	401.40	407.00

MISSOURI GRAIN WEEKLY TRENDS

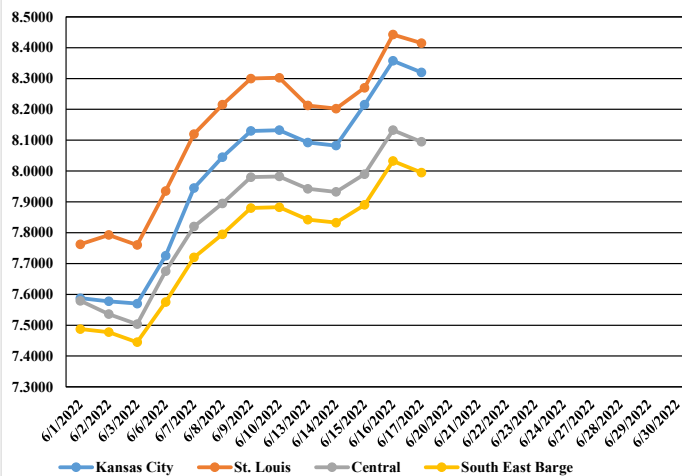
Compared to last week, Soybeans 0.40 to 0.56 lower, Wheat 0.22 to 0.42 lower, Corn 0.11 to 0.22 higher, Sorghum 0.11 to 0.12 higher.

Area	#1 Soybeans	#2 Soft Wheat	#2 Corn	#2 Grain Sorghum
Kansas City				
Friday**	17.22-17.37	10.50	7.98-8.28	7.11
Monday	16.88-17.03	10.64	7.94-8.24	7.12
Tuesday	16.77-16.92	10.45	7.93-8.23	7.11
Wednesday	16.74-16.89	10.44	8.09-8.34	7.11
Thursday	16.90-17.05	10.70	8.23-8.48	7.25
Friday	16.82-16.92	10.27	8.20-8.45	7.21
St. Louis				
Friday**	18.16	10.45-10.85	8.30	7.03
Monday	17.73	10.45-10.86	8.21	6.99
Tuesday	17.64	10.24-10.65	8.20	6.98
Wednesday	17.45	10.24-10.64	8.27	7.04
Thursday	17.65	10.52-10.90	8.44	7.18
Friday	17.60	10.08-10.47	8.42	7.15
Central				
Friday**	17.56-17.61	10.30-10.45	7.98	---
Monday	17.18-17.23	10.31-10.46	7.94	---
Tuesday	16.97-17.14	10.10-10.25	7.93	---
Wednesday	16.89-16.94	10.09-10.24	7.99	---
Thursday	17.05-17.10	10.35-10.50	8.13	---
Friday	16.97-17.02	9.92-10.07	8.10	---
S.E. MO				
Friday**	17.91-18.01	10.12-10.31	7.73-8.03	---
Monday	17.34-17.63	10.11-10.31	7.69-7.99	---
Tuesday	17.19-17.26	9.92-10.10	7.68-7.98	---
Wednesday	17.04-17.34	9.92-10.10	7.74-8.04	---
Thursday	17.19-17.49	10.20-10.38	7.88-8.18	---
Friday	17.12-17.42	9.76-9.94	7.85-8.15	---

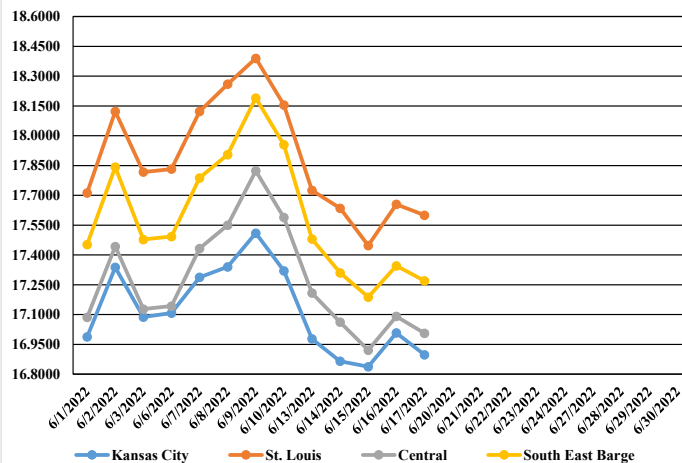
(PRICES PER BUSHEL) *NEW CROP **PREVIOUS WEEK'S PRICES
Most locations not providing cash wheat bids at this time, due to temporary transportation issues.

MONTHLY GRAIN CROP

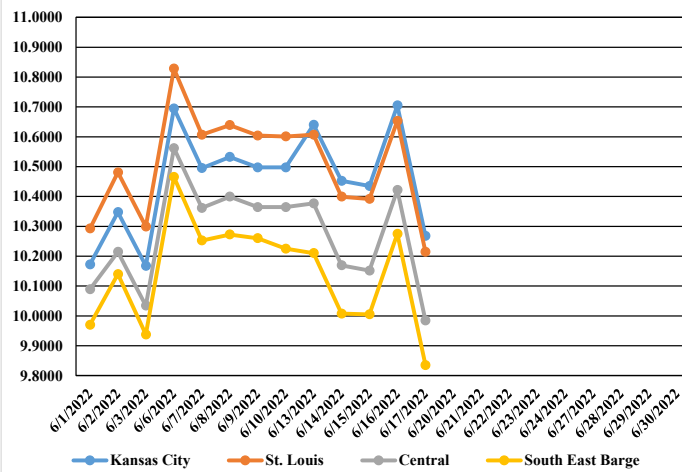
June 2022 Corn Bids



June 2022 Soybean Bids



June 2022 Wheat Bids



WHOLESALE FEEDSTUFFS PRICES 06/17/22
(DOLLARS PER TON-BULK BASIS)

Area	Soybean Hulls - Pellets	Cottonseed Meal 41%	Corn Gluten Pellets 21%	Wheat Middlings
Kansas City	220.00	405.00	292.50	187.50
St. Louis	N/A	400.00	285.00	193.00

NASS REPORTS

BROILER HATCHERY 06/15/2022

Broiler-Type Eggs Set in the United States Up 1 Percent
Hatcheries in the United States weekly program set 243 million eggs in incubators during the week ending June 11, 2022, up 1 percent from a year ago. Average hatchability for chicks hatched during the week in the United States was 80.3 percent. Average hatchability is calculated by dividing chicks hatched during the week by eggs set three-weeks earlier.

Broiler-Type Chicks Placed in the United States Up 1 Percent

Broiler growers in the United States weekly program placed 191 million chicks for meat production during the week ending June 11, 2022, up 1 percent from a year ago. Cumulative placements from the week ending January 8, 2022 through June 11, 2022 for the United States were 4.30 billion. Cumulative placements were down slightly from the same period a year earlier.

TURKEY HATCHERY 06/15/2022

Eggs in Incubators on June 1 Up Slightly from Last Year

Turkey eggs in incubators on June 1, 2022 in the United States totaled 26.1 million, up slightly from June 1, 2021. Eggs in incubators were down 2 percent from the May 1, 2022 total of 26.6 million eggs.

Poults Hatched During May Up 8 Percent from Last Year

Turkey poults hatched during May 2022 in the United States totaled 22.6 million, up 8 percent from May 2021. Poults hatched were up 2 percent from the April 2022 total of 22.2 million poults.

Net Poults Placed During May Up 9 Percent from Last Year

The 21.5 million net poults placed during May 2022 in the United States were up 9 percent from the number placed during the same month a year earlier. Net poult placements were up 3 percent from the April 2022 total of 20.9 million.

MISSOURI WEEKLY HAY SUMMARY 06/16/22

A very busy week in the hay fields across the entire state this week. Record setting heat and only a few scattered and isolated pop up showers didn't slow anyone down. As expected, parts of about 10 or so counties are showing on the latest drought monitor, mostly in the south central area. Talking to farmers around many more will be added very quickly without some rain. At the local coffee shops most farmers are talking of overall lower hay yields this year. A cool wet spring didn't get grasses to growing very fast and even many of those who put on record high fertilizer are saying hay yields are lower in most areas. Hay prices are firm to higher, supply and demand are moderate. Missouri Department of Agriculture has a hay directory visit <http://mda.mo.gov/abdhaydirectory/> for listings of hay <http://agebb.missouri.edu/haylst/> Alfalfa - Supreme 225.00-275.00, small square 8.00-12.00 per bale

- Alfalfa - Premium 175.00-225.00
- Alfalfa - Good 120.00-180.00, small square 5.00-9.00 per bale
- Alfalfa - Fair 100.00-125.00
- Alfalfa/grass mix - Good/Premium small square 6.00-8.00 per bale
- Mixed grass - Good/Premium 80.00-140.00
- Mixed grass - Fair/Good 60.00-100.00, small square 4.00-6.00 per bale
- Mixed grass - Fair 25.00-55.00 per large round bale
- Wheat straw - 4.00-6.00 per small square bale

Please Note: The above volumes (tonnage, acres, and bales) listed on this USDA LPGMN report are for confirmed trades only, it does not include estimated volume (tonnage) for bids or offers to the trade.

Fescue seed harvest is within days of getting going and combines should be in the fields by this weekend. Scouting reports are quite surprising and it seems seed will be quite heavy, as plants spent more energy making seed than forage this year. Prices around the state are nearly double of last year and actually the highest levels seen in at least the last two decades. Although much of that will be ate up by record fuel cost, a heavy crop along with these price levels should encourage several to harvest. Prices at all reporting stations is at 1.08-1.10 per lb.

MISSOURI WEEKLY SHEEP/GOAT AUCTION SUMMARY

06/20/22

Receipts: 1484 Week Ago: 722 Last Year: 1475

All prices CWT unless otherwise noted.

SHEEP: Feeder lambs Medium and Large 1 pkg 29 lbs 305.00. Medium and Large 1-2 30-40 lbs 245.00-250.00. Slaughter lambs woolled and shorn Choice and Prime 1-3 lot 49 lbs 230.00; pkg lbs 245.00; pkg 76 lbs 217.50; pkg 83 lbs 230.00. Choice 1-3 55-80 lbs 200.00-212.50. Woolled Choice and Prime 1-2 60-85 lbs 235.00-260.00. Choice 1-2 pkg 68 lbs 225.00. Hair Choice and Prime 1 pkg 42 lbs 240.00; 55-60 lbs 270.00-275.00. Choice and Prime 1-2 40-50 lbs 240.00-290.00; 50-70 lbs 230.00-275.00; 75-95 lbs 240.00-267.00. Choice and Prime 1-3 30-50 lbs 232.50-265.00; 50-60 lbs 240.00-255.00; 60-90 lbs 225.00-265.00. Choice 1-3 35-70 lbs 200.00-237.50. Good 1-2 pkg 52 lbs 175.00. Slaughter ewes Good 2-3 pkg 130 lbs 150.00. Utility and Good 2 100-140 lbs 130.00-135.00. Utility and Good 2-3 100.00. Hair Good 2-3 175.00. Utility and Good 1-3 85-160 lbs 117.50-137.50. Slaughter bucks 1-2 120-140 lbs 135.00-152.00. Hair bucks 1-2 115-125 lbs 142.50-215.00. Replacements: Hair ewes Small and Medium 1-2 2-4 yrs 101 lbs 240.00.

GOATS: Feeder kids Selection 1 30-50 lbs 325.00-375.00, replacements 425.00-450.00. Selection 1-2 30-40 lbs 282.00-340.00. Selection 2 20-50 lbs 245.00-327.50. Selection 3 40-50 lbs 155.00-180.00. Wether kids Selection 1 lot 43 lbs 335.00. Slaughter kids Selection 1 40-55 lbs 300.00-367.00, fancy 405.00-420.00; 60-70 lbs 320.00-370.00. Selection 1-2 40-50 lbs 275.00-285.00; pkg 85 lbs 300.00. Selection 2 50-60 lbs 240.00-322.50. Selection 3 45-50 lbs 125.00-145.00. Slaughter nannies/does Selection 1-2 70-80 lbs 150.00-235.00; 80-100 lbs 157.50-220.00; 100-130 lbs 150.00-235.00. Slaughter bucks/billies Selection 1-2 80-140 lbs 155.00-300.00. Replacements: nannies/does Selection 1-2 2-4 yrs 70-100 lbs exposed 250.00-285.00; 2-4 yrs 115 lbs 165.00-200.00.

Explanatory Notes: Stage - Represents estimated lambing/kidding period (Open, Exposed, Bred, Fall = Sep-Nov, Win = Dec-Feb, Spr = Mar-May, Sum=Jun-Aug

NATIONAL DIRECT DELIVERED FEEDER PIG REPORT

06/17/22 Receipts: 69,380 Week ago: 100,260 Year Ago: 93,396
Early weaned pigs and all feeder pigs 2.00 per head lower. Demand light for moderate offerings.

Early weaned pigs 10-12 lbs. basis: Formula 39,405 head 32.42-50.48, weighted average 40.62. Cash 23,265 head 30.00-48.75, weighted average 39.21.
Feeder pigs 40 pounds basis: Cash 6,710 head 60.00-71.00, weighted average 65.43.

NATIONAL DAILY DIRECT PRIOR DAY HOG REPORTS FOR 06/17/22

BARROWS AND GILTS (Carcass Basis): 7,334 head
Base Carcass Price, 103.01-123.00, weighted average 116.96

SOWS (Live Basis): 7,215 head
300-500 lbs. 27.00-60.00
Over 500 lbs. 36.00-62.00

MISSOURI WEEKLY DIRECT SLAUGHTER CATTLE REPORT 06/17/22

Weekly Receipts: 320 Week ago: 0 Year ago: 280
Trading as of Friday morning: light to moderate with flat and grid dressed mostly 4.00 higher.

LIVE STEERS & HEIFERS: No Sales Reported
DRESSED STEERS & HEIFERS: Load Thu 90% Choice 232.00

GRADE AND WEIGHT (Grid): 7 loads Thu 238.00