

Weekly Market Summary

Published by:
Missouri Department of Agriculture
Ag Business Development Division
Market News Program



Chris Chinn, Director
 Jill Wood, Division Director
 Tony Hancock, Editor
<http://www.ams.usda.gov/marketnews.htm>
<http://www.ams.usda.gov/marketnews.htm>

Michael L. Parson, Governor

Volume XLII, Number 36 ♦ P.O. Box 630, Jefferson City, MO 65102 ♦ (573) 751-4211 ♦ Monday, September 12, 2022

MISSOURI WEEKLY FEEDER CATTLE WEIGHTED AVERAGE REPORT

Receipts: 12,133 Week ago: 17,505 Year ago: 13,352
 Steers and Heifers Medium and Large 1—Weighted average weights and prices

STEERS: Medium and Large 1

334 lbs. 217.84 524 lbs. 211.89 725 lbs. 190.14 941 lbs. 174.15
 373 lbs. 222.20 575 lbs. 208.64 766 lbs. 187.42 987 lbs. 172.40
 425 lbs. 222.38 618 lbs. 206.12 827 lbs. 180.25
 480 lbs. 214.95 667 lbs. 198.22 877 lbs. 182.45

HEIFERS: Medium and Large 1

312 lbs. 194.57 522 lbs. 191.83 712 lbs. 177.62 924 lbs. 167.50
 377 lbs. 197.80 576 lbs. 187.42 756 lbs. 164.16 960 lbs. 164.75
 423 lbs. 200.67 620 lbs. 185.82 811 lbs. 168.55
 478 lbs. 194.36 667 lbs. 184.19 866 lbs. 163.97

Missouri Steer (Heifer) Stocker Formula for 09/12/2022

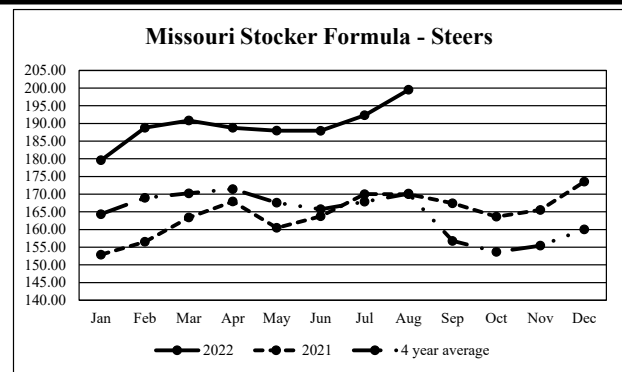
Monday's Missouri Stocker Formula consists of **2126 (2256)** head with a weighted average weight of **541.92 (543.55)** lbs. and a price value of **204.01 (183.62)**, 2.48 higher (4.60 higher) than last Monday.

This a rolling seven day calculated weighted value which combines all Feeder Steers reported by MDA/USDA Market News Service weighing from 400-649 lbs. in the Medium and Large 1 and Medium and Large 1-2 frame and muscle classifications, including all comment cattle except Brahman X. Heifer values are in parentheses.

Missouri Weekly Cattle Auction Summary 09/12/22

Compared to last week, feeders sold mostly steady. The supply was light as several barns remained dark for the holiday shortened week. Much cooler nights are hinting at the coming of fall and buyers are becoming less interested in high risk calves that lack good health programs. There was several load lots and partial loads that sold this week, mostly in the north. Green City held a special sale Wednesday with over 3k head offered. A full load of 864 lb. steers sold at 185.35. On the other end of the weight scale a part load of 535 steer calves sold at New Cambria Livestock Market on Thursday averaging 535 lbs. and sold at 224.75. Interestingly enough there has been an uptick in demand for replacement cows noted over the last couple of weeks. Following the long dry summer and huge sales offs, rains have resulted in grass greening up and growing again and there are several farmers looking for cows now. Boxed beef cutouts were lower for the week. Choice closed on Friday at 257.26, down 2.16 and select at 234.73, down 3.85. As of the Friday afternoon report negotiated feedlot volume was reported just under 79k head, with live sales 141.00-145.00 and dressed sales at 226.00-229.00. The Missouri Stocker Formula Consists of 2126 head with a weighted average weight of 541.92 lbs. and a price value of 204.01, 2.48 higher than last week.

The Weekly Market Summary, as well as historical summaries, are available on our website <https://agmarketnews.mo.gov/summaries>
 Market News Hotline: 1-573-522-9244

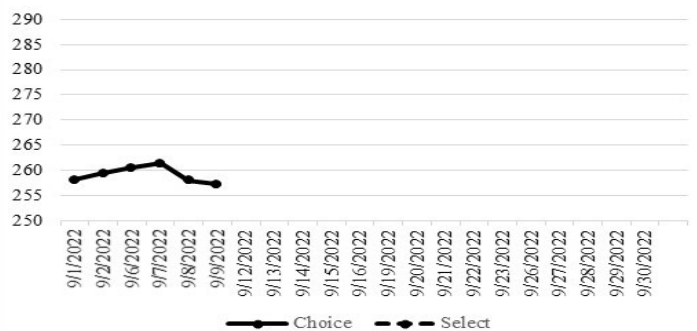


*Graph is updated the first Monday of each month.

NATIONAL BOXED BEEF CUTOUT/BOXED BEEF CUTS

<u>DATE</u>	<u>CHOICE</u>	<u>SELECT</u>	<u>TOTAL LOADS</u>
09/02	259.42	238.58	89
09/06	260.47	239.30	125
09/07	261.34	237.51	218
09/08	258.01	236.04	189
09/09	257.26	234.73	118
5 Day Simple Average	259.30	237.23	

Boxed Beef Cuts September 2022



WEEKLY LIVESTOCK SLAUGHTER 09/10/22

	<u>CATTLE</u>	<u>HOGS</u>	<u>SHEEP</u>
Week to Date:	604,000	2,243,000	28,000
Last Week:	638,000	2,356,000	32,000
Last Year:	579,000	2,248,000	31,000

SOUTHWEST MISSOURI WEEKLY SUMMARY

(Joplin and Springfield)

Receipts: 1562 Week ago: 7089 Year ago: 2578

Compared to last week, most weights of steers had few comparisons with the best test mostly steady. Heifers under 550 lbs steady to weak and over 550 lbs steady to 5.00 higher. Slaughter cows and bulls steady.

FEEDER STEERS:
Medium and Large 1

350-400 lbs.	204.00-216.00
400-500 lbs.	202.00-215.00
500-600 lbs.	195.00-197.00
600-700 lbs.	185.00-202.50
700-800 lbs.	166.50-177.00
Pkg 933 lbs.	155.50

FEEDER HEIFERS:
Medium and Large 1

Pkg 315 lbs.	180.00
400-500 lbs.	175.00-187.00
500-600 lbs.	170.00-185.00
600-700 lbs.	159.00-176.00
700-800 lbs.	153.00-157.00
Few 800-850 lbs.	152.00-153.00

FEEDER HOLSTEIN STEERS
Large 3

Scarce Scarce

SLAUGHTER COWS: Breaking and Boning (70-85% lean) 73.00-87.00; high dressing 83.50-100.00; low dressing 66.00-74.00. Lean (85-90%) 64.00-75.00

SLAUGHTER BULLS: Yield Grade 1-2 1415-2340 lbs. 101.00-112.00; high dressing 114.00-122.00

BRED COWS: Medium and Large 1 2-8 yrs 1480 lbs 2nd to 3rd stage 1475.00-1650.00. Medium and Large 1-2 2-8 yrs 910-1390 lbs 2nd to 3rd stage 985.00-1250.00, 1st stage 925.00-1150.00 per head

COW & CALF PAIRS: Scarce

SOUTH CENTRAL MISSOURI WEEKLY SUMMARY

(West Plains)

Receipts: 2450 Week ago: 2383 Year Ago: 4196

Compared to last week, steers over 550 lbs and all weights of heifers 3.00 to 6.00 higher and light weight steers 3.00 to 6.00 lower. Slaughter cows 1.00 to 2.00 lower. Slaughter bulls steady.

FEEDER STEERS:
Medium and Large 1

300-350 lbs.	213.00-230.00
400-500 lbs.	205.00-221.00
500-600 lbs.	200.00-215.00
600-700 lbs.	191.50-206.00
700-750 lbs.	180.00-185.00
56 hd 815 lbs.	175.50

FEEDER HEIFERS:
Medium and Large 1

300-400 lbs.	187.50-192.50
400-500 lbs.	176.00-195.00
500-600 lbs.	176.00-191.50
79 hd 680 lbs.	177.00
750-800 lbs.	161.00

FEEDER HOLSTEIN STEERS
Large 3

Scarce Scarce

SLAUGHTER COWS: Breaking and Boning (70-85% lean) 78.00-90.00; high dressing 87.00-99.00; low dressing 70.00-79.00. Lean (85-90%) 63.00-75.00

SLAUGHTER BULLS: Yield Grade 1-2 1105-2255 lbs. 100.00-114.00; high dressing 114.00-138.00; low dressing 82.50-97.00

BRED COWS: Medium and Large 1-2 2-8 yrs 1000-1545 lbs 2nd to 3rd stage 1150.00-1475.00, 1st stage 1025.00-1075.00; over 8 yrs 1175-1220 lbs 2nd to 3rd stage 1000.00-1125.00 per head

COW & CALF PAIRS: Medium and Large 1-2 2-8 yrs 1033-1375 lbs with 150-300 lb calves 1425.00-1600.00; 2-8 yrs 1020-1285 lbs rebred 1st stage with over 300 lb calves 1750.00-1900.00 per pair

WEST CENTRAL MISSOURI WEEKLY SUMMARY

(Kingsville, Windsor, Butler)

Receipts: 2478 Week ago: 4390 Year ago: 3424

Compared to last week, steers and heifers mostly steady. Slaughter cows uneven from 3.00 lower to 2.00 higher.

FEEDER STEERS:
Medium and Large 1

300-400 lbs.	227.50-235.00
400-500 lbs.	200.00-232.50
500-600 lbs.	204.00-218.00
600-700 lbs.	188.00-213.00
700-800 lbs.	179.50-195.75
55 hd 888 lbs.	176.00

FEEDER HEIFERS:
Medium and Large 1

Pkg 394 lbs.	196.00
400-500 lbs.	185.50-212.50
500-600 lbs.	175.00-192.00
600-700 lbs.	172.00-185.50

SLAUGHTER BULLS: Yield Grade 1-2 100.00-116.00 lbs 100.00-116.00; high dressing 116.50-133.00; low dressing 94.00-103.50

SLAUGHTER COWS: Breaking and Boning (70-85% lean) 73.50-93.50, high dressing 81.50-102.50. Lean (85-90%) 64.00-85.00

BRED COWS: Medium and Large 1-2 2-8 yrs 1010-1170 lbs 2nd stage 1050.00-1375.00 per head

COW & CALF PAIRS: Scarce

NORTHEAST MISSOURI WEEKLY SUMMARY

(Bowling Green, Kingdom City, Palmyra)

Receipts: 2292 Week ago: 3331 Year ago: 1604

Compared to last week, light test this week with steers under 800 lbs steady to firm, over 800 lbs lightly tested. Heifers under 600 lbs steady to firm and over 600 lbs firm to higher undertone. Slaughter cows steady to 4.00 lower.

FEEDER STEERS:
Medium and Large 1

400-500 lbs.	209.50-236.00
500-600 lbs.	204.00-217.00
600-700 lbs.	200.00-209.00
700-800 lbs.	180.75-188.75
53 hd 987 lbs.	168.50

FEEDER HEIFERS:
Medium and Large 1

400-500 lbs.	189.00-207.00
500-600 lbs.	185.50-193.00
Pkg 616 lbs.	186.00
Pkg 756 lbs.	170.75
Lot 800 lbs.	164.25

SLAUGHTER BULLS: Yield Grade 1-2 1325-2250 lbs 104.00-115.00; high dressing 120.00-134.00

SLAUGHTER COWS: Breaking and Boning, (70-85% lean) 83.00-89.00; high dressing 86.50-102.50; low dressing 67.00-80.00. Lean (85-90%) 75.50-84.00

SLAUGHTER STEERS: Choice 2 -3 143.00-150.00. Select 1-2 139.00-141.00.

BRED COWS: Scarce

SLAUGHTER HEIFERS: Choice 2-3 148.00-148.50

COW & CALF PAIRS: Scarce

NORTH CENTRAL MISSOURI WEEKLY SUMMARY

(Macon, Unionville, Green City, New Cambria)

Receipts: 5890 Week ago: 2057 Year ago: 3930

Compared to the recent sales, steers and heifers firm to higher undertone. Slaughter cows steady to firm.

*Sale barns on a summer schedule and may not have a sale each week.

FEEDER STEERS:
Medium and Large 1

400-500 lbs.	210.00-238.00
500-600 lbs.	197.75-224.75
600-700 lbs.	187.25-217.25
700-800 lbs.	182.00-196.00
800-900 lbs.	173.75-187.00
900-1000 lbs.	175.00-177.00

FEEDER HEIFERS:
Medium and Large 1

400-500 lbs.	190.00-208.00
500-600 lbs.	167.00-208.75
600-700 lbs.	180.00-196.25
700-800 lbs.	174.00-184.75
800-900 lbs.	160.00-175.00
900-1000 lbs.	164.75-167.50

SLAUGHTER BULLS: Yield Grade 1-2 1380-2340 lbs 104.50-125.00

SLAUGHTER COWS: Breaking and Boning, (70-85% lean) 74.50-92.50; high dressing 89.50-97.00. Lean (85-90%) 67.00-83.50

BRED COWS: Scarce

COW & CALF PAIRS: Scarce

SOUTHEAST MISSOURI WEEKLY SUMMARY

(Jackson and Farmington) (w/e 09/02/22)

Receipts: 1284 Week ago: 1451 Year ago: 1358
 Compared to last week, steers and heifers uneven from 5.00 lower to 10.00 higher. Slaughter cows and bulls steady to 3.00 higher.

FEEDER STEERS:
 Medium and Large 1

300-400 lbs. 201.00-213.00
 400-500 lbs. 189.00-211.00
 500-600 lbs. 186.00-194.00
 600-700 lbs. 170.00-199.00
 700-800 lbs. 159.00-176.00

FEEDER HEIFERS:
 Medium and Large 1

300-400 lbs. 160.00-183.00
 400-500 lbs. 160.00-195.00
 500-600 lbs. 156.00-177.00
 600-700 lbs. 155.00-177.00
 700-800 lbs. 141.00-172.00

SLAUGHTER BULLS: Yield Grade 1-2 1065-2420 lbs. 92.00-105.00, high dressing 107.00-120.00

SLAUGHTER COWS: Breaking and Boning (75-85% lean) 70.00-87.00; high dressing 84.00-92.00. Lean (85-90% lean) 55.00-66.00

BRED COWS: Medium and Large 2 2-8 yrs few 1005-1140 lbs 2nd stage 1025.00-1200.00; over 8 yrs 1230-1350 lbs 3rd stage 935.00-1150.00 per head

COW & CALF PAIRS: Medium and Large 2 2-8 yrs 1000-1200 lbs with 150-300 lb calves 1100.00-1600.00; 2-8 yrs 1000-1200 lbs with 150 lb to over 300 lb calves 1600.00-1800.00 per pair

EAST CENTRAL MISSOURI WEEKLY SUMMARY

(Cuba, Vienna) (w/e 09/02/22)

Receipts: 1606 Week ago: 1632 Year ago: 2012
 Compared to last week, steers under 500 lbs steady to 5.00 higher, over 500 lbs steady to 4.00 lower. Heifers steady to 4.00 lower. Slaughter cows steady to 1.00 lower.

FEEDER STEERS:
 Medium and Large 1

300-400 lbs. 225.00-242.00
 400-500 lbs. 205.00-237.00
 500-600 lbs. 202.50-216.00
 650-700 lbs. 187.00-197.50
 Pkg 850 lbs. 175.00

FEEDER HEIFERS:
 Medium and Large 1

300-400 lbs. 204.00-216.00
 400-500 lbs. 200.00-212.00
 500-600 lbs. 171.00-208.00
 600-700 lbs. 178.00-186.00
 Pkg 738 lbs. 166.00
 Pkg 887 lbs. 134.50
 Lot 1017 lbs. 114.00

SLAUGHTER BULLS: Yield Grade 1-2 1240-2230 lbs 104.00-117.00; high dressing couple 119.00-122.00; low dressing 90.00-98.00

SLAUGHTER COWS: Breaking and Boning, (70-85% lean) 82.50-90.00; high dressing 88.50-93.50; low dressing few 77.50-80.50. Lean (85-90%) 71.00-81.50

BRED COWS: Medium and Large 1-2

COW & CALF PAIRS: Scarce

NORTHWEST MISSOURI WEEKLY SUMMARY

(Tina) (W/E 08/26/22)

Receipts: 2105 Two weeks ago: 1309
 Compared to two weeks ago, steers 6.00 to 8.00 higher, spots 12.00 to 14.00 higher. Heifers 8.00 to 10.00 higher. Slaughter cows 4.00 to 6.00 lower.

FEEDER STEERS:
 Medium and Large 1

400-500 lbs. 216.00-223.00
 500-600 lbs. 207.00-219.00
 600-700 lbs. 175.50-203.25
 700-750 lbs. 171.00-187.25

FEEDER HEIFERS:
 Medium and Large 1

400-500 lbs. 184.00-191.00
 500-600 lbs. 180.00-184.00
 600-650 lbs. 171.00-179.50
 700-800 lbs. 157.50-169.50

SLAUGHTER BULLS: Yield Grade 1-2 1285-2300 lbs 98.00-114.00; high dressing ind 125.00; low dressing ind 90.00

SLAUGHTER COWS: Breaking and Boning, (70-85% lean) 74.00-84.50; high dressing 82.50-99.50. Lean (85-90%) 61.00-70.00

BRED COWS: Medium and Large 1 2-8 yrs 1170-1415 lbs 2nd to 3rd stage 1825.00-2075.00. Medium and Large 1-2 2-8 yrs 1113-1520 lbs 2nd to 3rd stage 1525.00-1850.00 per head

COW & CALF PAIRS: Medium and Large 1 2-8 yrs 1000-1380 lbs with 150 lb to over 300 lb calves 1700.00-2050.00. Medium and Large 1-2 975-1300 lbs with baby to 300 lb calves 1525.00-1700.00 per pair

AFTERNOON NATIONAL SLAUGHTER CATTLE REVIEW 09/09/22

So far for Friday in Nebraska and Western Cornbelt negotiated cash trading has been slow on light demand. In Nebraska, compared to the last reported market on Thursday, live purchases traded unevenly steady at 143.00. Not enough dressed purchases for a market trend. The last reported dressed purchase market was on Thursday at 226.00. In the Western Cornbelt a few live purchases traded at 144.00. However, not enough live or dressed purchases for a market trend. The last reported live purchases market was on Thursday from 143.00-143.00. Last week dressed purchases traded from 228.00-232.00. In the Southern Plains negotiated cash trading has been mostly inactive on light demand. Not enough purchases for a market trend. The last reported market was on Thursday with live purchases at 141.00.

Negotiated Cash Sales:				
Confirmed:	10,073	Week Ago:	2,571	Year Ago: 2,060
Week to date:	78,963	Week Ago:	70,041	Year Ago: 69,907

<u>Live Basis</u>	<u>Steers</u>	<u>Heifers</u>
Over 80% Choice	143.00-144.00, avg 143.30	143.00-144.50, avg 143.33
65-80% Choice	141.00	141.00
35-65% Choice	-	-
0-35% Choice	-	-
Total All Grades	141.00-144.00, avg 143.20	141.00-144.50, avg 143.07
<u>Dressed Basis</u>		
Over 80% Choice	226.00-229.00, avg 227.59	229.00
65-80% Choice	-	-
35-65% Choice	-	-
0-35% Choice	-	-
Total All Grades	226.00-229.00, avg 227.59	229.00

WEEKLY COMMODITY FUTURES TRENDS

Compared to last week, Live Cattle 0.72 to 1.17 higher, Lean Hogs 0.42 to 3.15 higher, Feeder Cattle 0.33 to 0.62 lower, except Sep 0.87 lower.

Daily Futures Closes

	Mon.	Tues.	Wed.	Thu.	Fri.
Cattle					
Oct	Holiday	145.05	144.25	144.37	145.67
Dec		150.87	150.07	149.65	150.97
Feb		155.20	154.50	154.27	155.35
Apr		158.72	158.12	158.17	159.02
		154.67	154.20	154.32	155.22
Lean Hogs					
Oct	Holiday	91.10	91.07	92.12	93.17
Dec		83.50	83.60	82.67	83.12
Feb		87.07	87.42	86.80	87.42
Apr		91.47	91.90	91.52	92.07
May		95.65	96.25	95.87	96.77
Fdr Cat					
Sep	Holiday	184.17	182.02	182.32	183.00
Oct		186.10	183.95	184.40	185.57
Nov		187.02	185.45	185.75	186.82
Jan		187.47	186.35	186.67	187.40
Mar		189.42	188.40	188.92	189.47
Milk					
Sep	Holiday	19.67	19.84	19.79	19.80
Oct		20.09	20.34	20.59	20.94
Nov		20.70	20.85	21.09	21.56

WEEKLY COMMODITY GRAIN FUTURES TRENDS

Compared to last week, 0.06 to 0.21 lower, Wheat 0.46 to 0.60 higher, Corn 0.16 to 0.29 higher, KC Wheat 0.48 to 0.58 higher, Soybean Meal 1.50 to 9.20 lower.

Daily Grain Futures Closes

	Mon.	Tues.	Wed.	Thu.	Fri.
Soybeans					
Sep	Holiday	1490	1466 3/4	1470 1/2	1489 1/4
Nov		1398 3/4	1383 1/2	1386	1412 1/4
Jan		1403 3/4	1388 3/4	1391 1/4	1417 1/2
Mar		1406 3/4	1392	1394 3/4	1420 1/4
May		1408 1/2	1394 3/4	1398 1/4	1423
Wheat					
Sep	Holiday	800	826 1/2	810 1/2	853 1/4
Dec		817	844 1/4	829	869 1/2
Mar		832	857 1/2	843 3/4	884
May		841	863 3/4	852 3/4	890 1/2
Jul		841	859 1/2	849 1/2	884
Corn					
Sep	Holiday	680 3/4	676 3/4	674 1/2	698 1/2
Dec		676	671	668 1/2	685
Mar		681 3/4	675 3/4	673 1/4	689 1/4
May		682 3/4	676 3/4	674 1/2	689 1/4
Jul		678 1/4	672 1/4	669 3/4	683 1/2
KC Wheat					
Sep	Holiday	879	901 1/2	893	929 1/4
Dec		882	901 1/2	893	929 1/4
Mar		883 3/4	903 1/2	894 1/4	929 3/4
May		884	903 3/4	893 1/2	929
Jul		875 3/4	891 3/4	881 1/4	916 1/4
SB Meal					
Sep	Holiday	433.50	436.10	427.80	440.90
Oct		410.60	415.00	409.10	414.80
Dec		406.80	411.50	405.90	410.70
Jan		404.60	408.90	403.90	407.80
Mar		399.10	403.70	399.50	403.30

MISSOURI GRAIN WEEKLY TRENDS

Compared to last week, 0.04 to 0.09 lower, Wheat 0.54 to 0.60 higher, Corn 0.14 to 0.24 higher, Sorghum 0.19 to 0.30 higher.

Area	#1 Soybeans	#2 Soft Wheat	#2 Corn	#2 Grain Sorghum
Kansas City				
Friday**	14.06-15.71	8.31	7.31-7.44	7.01
Monday	Holiday			
Tuesday	13.84-15.49	8.37	7.41-7.56	7.11
Wednesday	13.69-15.34	8.64	7.46-7.51	7.06
Thursday	13.71-15.41	8.49	7.29-7.49	7.04
Friday	13.97-15.67	8.90	7.45-7.65	7.20
St. Louis				
Friday**	16.19	7.86-8.16	7.26	6.29-6.86
Monday	Holiday			
Tuesday	15.97	8.05-8.22	7.41	6.41-6.96
Wednesday	15.90	8.32-8.49	7.37	6.37-6.91
Thursday	15.92	8.16-8.29	7.35	6.35-6.89
Friday	16.12	8.58-8.70	7.57	6.59-7.05
Central				
Friday**	15.16-15.31	7.79	7.16-7.66	---
Monday	Holiday			
Tuesday	14.94-15.09	7.85	7.26-7.56	---
Wednesday	14.79-14.94	8.12	7.21-7.51	---
Thursday	14.81-14.96	7.97	7.19-7.49	---
Friday	15.07-15.22	8.38	7.25-7.35	---
S.E. MO				
Friday**	14.81-15.11	7.83	6.75-6.99	---
Monday	Holiday			
Tuesday	14.65-14.89	7.90	6.91-7.11	---
Wednesday	14.50-14.74	8.17	6.86-7.07	---
Thursday	14.52-14.76	8.29	6.84-7.05	---
Friday	14.78-15.02	8.70	6.96-7.19	---

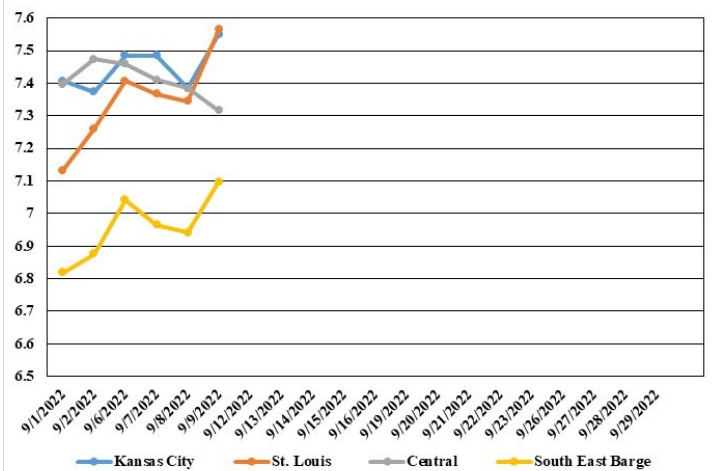
(PRICES PER BUSHEL) *NEW CROP **PREVIOUS WEEK'S PRICES
*Bids calculated using Kansas City, St. Louis, and St. Joseph bids

MONTHLY GRAIN CROP

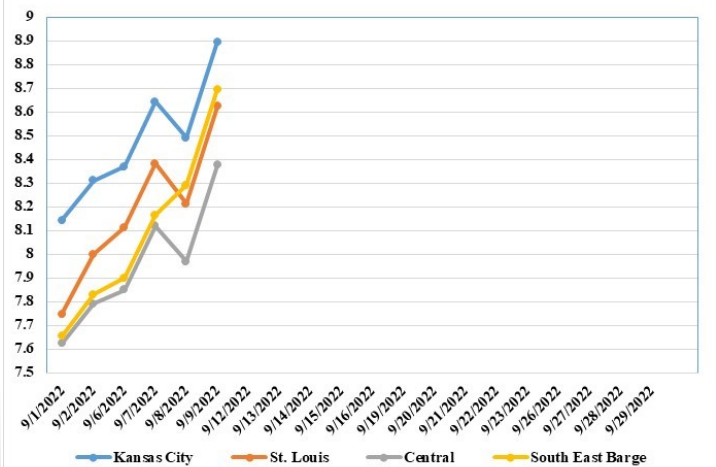
September 2022 Soybean Bids



September 2022 Corn Bids



September 2022 Wheat Bids



*Axis value ranges may be updated to reflect data points.

WHOLESALE FEEDSTUFFS PRICES 09/09/22
(DOLLARS PER TON-BULK BASIS)

Area	Soybean Hulls - Pellets	Soybean Meal 46.5-48%	Corn Gluten Pellets 21%	Wheat Middlings
Kansas City	282.50	455.80	316.00	265.00
St. Louis	n/a	n/a	300.00	247.50

BROILER HATCHERY

Broiler-Type Eggs Set in the United States Up 4 Percent

Hatcheries in the United States weekly program set 242 million eggs in incubators during the week ending September 3, 2022, up 4 percent from a year ago. Average hatchability for chicks hatched during the week in the United States was 80.6 percent. Average hatchability is calculated by dividing chicks hatched during the week by eggs set three-weeks earlier.

Broiler-Type Chicks Placed in the United States Up 5 Percent

Broiler growers in the United States weekly program placed 194 million chicks for meat production during the week ending September 3, 2022, up 5 percent from a year ago. Cumulative placements from the week ending January 8, 2022 through September 3, 2022 for the United States were 6.59 billion. Cumulative placements were up 1 percent from the same period a year earlier.

PEANUT PRICES

Peanut Price Highlights

Peanut prices received by farmers for all farmer stock peanuts averaged 25.3 cents per pound for the week ending September 3, down 0.6 cent from the previous week. Marketings of all farmer stock peanuts for the week ending September 3 totaled 159 million pounds, up 91.8 million pounds from the previous week.

Runner-type peanut prices averaged 25.0 cents per pound for the week ending September 3, down 0.9 cent from the previous week. Marketings of runner-type peanuts totaled 127 million pounds, up 59.3 million pounds from the previous week.

MISSOURI WEEKLY HAY SUMMARY 09/08/22

As expected, several farmers have pulled hay equipment back out of the sheds now. Although grass still has some time to grow before frost, several farmers seem to be trying to make some hay now, as they have just a small window before it will be time to climb into the combines and begin grain harvest. There are still some counties right along the KS line that are very dry but much of the area that was severally dry earlier in the summer, has seen quite the turn around. Grass and greened and begin to grow much faster than probably expected given how dry it was. Hay sales have slowed ever so slightly from high levels they were the last two months as producers are waiting to see how much fall pasture they end up with. Hay supplies are light to moderate. Hay movement is moderate, demand is moderate to good and prices are steady to firm. Missouri Department of Agriculture has a hay directory visit <http://mda.mo.gov/abd/haydirectory/>. For listings of hay: <http://agebb.missouri.edu/haylst/>
Alfalfa - Supreme 250.00-300.00, small square 10.00-15.00 per bale
Alfalfa - Premium 180.00-250.00
Alfalfa - Good 150.00-180.00, small square 5.00-9.00 per bale
Alfalfa - Fair 125.00-150.00
Alfalfa/grass mix - Good/Premium small square 5.00-9.00 per bale
Mixed grass - Good/Premium 125.00-175.00
Mixed grass - Fair/Good 100.00-150.00, small square 5.00-8.00 per bale
Mixed grass - Fair 50.00-85.00 per large round bale
Wheat straw - 4.00-7.00 per small square bale

Please Note: The above volumes (tonnage, acres, and bales) listed on this USDA LPGMN report are for confirmed trades only, it does not include estimated volume (tonnage) for bids or offers to the trade.

The current hay directory can be found at:

<https://apps.mda.mo.gov/HayDirectory>.

List your hay for sale at:

<https://agmarketnews.mo.gov/hay-directory/hay-listing-online-form#no->

MISSOURI WEEKLY SHEEP/GOAT AUCTION SUMMARY

Receipts: 570 Week Ago: 1140 Last Year: 788

All prices CWT unless otherwise noted.

SHEEP: Feeder Lambs: Hair Small and Medium 1-2 40-50 lbs 242.50-270.00; lot 50 hd 210.00.

Slaughter lambs woolled and shorn Choice and Prime 1-3 60-80 lbs 175.00-185.00; 80-90 lbs 141.00-145.00; 135-170 lbs 100.00-105.00. hair Choice and Prime 1-3 50-60 lbs 235.00-250.00; 60-70 lbs 210.00-227.50; 20 hd 71 lbs 200.00. Choice 1-2 70-90 lbs 157.50-168.00; pkg 96 lbs 120.00. Slaughter ewes Utility 1-2 130-155 lbs 80.00-90.00.

Replacement ewes hair Small and Medium 1 yearlings 60-70 lbs open 270.00-275.00. Small and Medium 1-2 yearlings 60-85 lbs open 235.00-250.00.

GOATS: Feeder kids Selection 1-2 pkg 24 lbs 305.00; pkg 36 lbs 275.00. Selection 2 40-50 lbs 230.00-245.00. Selection 3 pkg 29 lbs 185.00.

Slaughter kids Selection 1 pkg 55 lbs 335.00. Selection 1-2 pkg 48 lbs 300.00; 55-60 lbs 280.00-285.00. Selection 2 pkg 48 lbs 265.00; pkg 55 lbs 255.00; 60-70 lbs 235.00-240.00

Explanatory Notes: Stage - Represents estimated lambing/kidding period (Open, Exposed, Bred, Fall = Sep-Nov, Win = Dec-Feb, Spr = Mar-May, Sum=Jun-Aug

NATIONAL DIRECT DELIVERED FEEDER PIG REPORT

09/09/22 Receipts: 72,225 Week ago: 102,482 Year Ago: 76,486
Early weaned pigs 2.00 per head lower. All feeder pigs steady to weak.

Early weaned pigs 10-12 lbs. basis: Formula 31,814 head 34.20-50.15, weighted average 40.22. Cash 34,356 head 20.00-44.00, weighted average 38.25

Feeder pigs 40 pounds basis: Cash 6,055 head 51.00-74.00, weighted average 65.06

NATIONAL DAILY DIRECT PRIOR DAY HOG REPORTS FOR 09/09/22

BARROWS AND GILTS (Carcass Basis): 6,673 head
Base Carcass Price, 86.00-105.00, weighted average 94.35

SOWS (Live Basis): 7,370 head
300-500 lbs. 32.00-80.00
Over 500 lbs. 59.30-81.00

MISSOURI WEEKLY DIRECT SLAUGHTER CATTLE REPORT 09/09/22

Weekly Receipts: 320 Week ago: 320 Year ago: 320
Trading as of Friday morning: light to moderate with flat dressed sales mostly 2.00 to 3.00 lower and grid dressed sales inactive.

LIVE STEERS & HEIFERS: 2 loads 144.00
DRESSED STEERS & HEIFERS: 6 loads flat Thu 226.00

GRADE AND WEIGHT (Grid): no sales reported

Click here for the current [National Crop Progress](#)

Click here for the current [Missouri Crop Progress](#)