

# Weekly Market Summary

Published by:  
**Missouri Department of Agriculture**  
**Ag Business Development Division**  
**Market News Program**



Chris Chinn, Director  
 Jill Wood, Division Director  
 Tony Hancock, Editor  
[agmarketnews.mo.gov](http://www.ams.usda.gov/marketnews.mo.gov)  
<http://www.ams.usda.gov/marketnews.htm>

Michael L. Parson, Governor

Volume XLII, Number 37 ♦ P.O. Box 630, Jefferson City, MO 65102 ♦ (573) 751-4211 ♦ Monday, September 19, 2022

## MISSOURI WEEKLY FEEDER CATTLE WEIGHTED AVERAGE REPORT

Receipts: 27,729 Week ago: 12,133 Year ago: 24,962

Steers and Heifers Medium and Large 1—Weighted average weights and prices

### STEERS: Medium and Large 1

331 lbs. 219.92	523 lbs. 207.41	726 lbs. 182.77	926 lbs. 175.68
375 lbs. 220.76	573 lbs. 205.01	774 lbs. 180.32	979 lbs. 161.10
426 lbs. 215.46	626 lbs. 199.06	819 lbs. 178.33	
474 lbs. 214.14	672 lbs. 191.60	893 lbs. 170.92	

### HEIFERS: Medium and Large 1

280 lbs. 160.87	475 lbs. 185.24	668 lbs. 175.35	867 lbs. 154.07
327 lbs. 194.51	526 lbs. 179.83	726 lbs. 171.45	933 lbs. 150.43
377 lbs. 192.24	578 lbs. 178.49	754 lbs. 168.18	971 lbs. 151.78
425 lbs. 192.00	626 lbs. 177.22	827 lbs. 159.12	

### Missouri Steer (Heifer) Stocker Formula for 09/19/2022

Monday's Missouri Stocker Formula consists of **5338 (5662)** head with a weighted average weight of **541.48 (540.47)** lbs. and a price value of **199.46 (176.09)**, 4.55 lower 7.53 lower than last Monday.

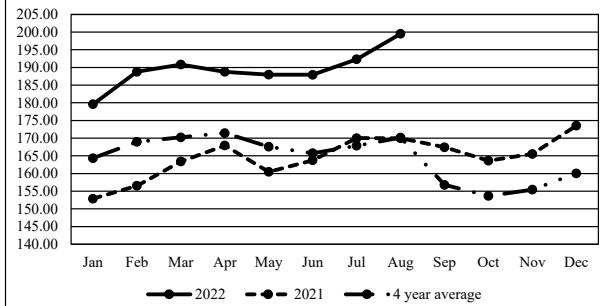
This a rolling seven day calculated weighted value which combines all Feeder Steers reported by MDA/USDA Market News Service weighing from 400-649 lbs. in the Medium and Large 1 and Medium and Large 1-2 frame and muscle classifications, including all comment cattle except Brahman X. Heifer values are in parentheses.

### Missouri Weekly Cattle Auction Summary 09/19/22

Compared to last week, steers and heifers mostly steady to 5.00 lower, except some noted good quality, long weaned calves coming off grass that brought a few dollars more than the previous markets. Demand for feeders was moderate, although the past week featured some temperature swings. A light jacket was needed in the morning but one would be heated up by the time afternoon came around. Buyers know the temperature swings of fall are coming. Health risk will be a concern and will continue until after the first frost and the weather stabilizes. There were a couple of notes from reporters in the sale barns of larger price spreads related to quality, flesh, and weaning status. Corn harvest has started in the state, with a few combines taking to the fields now. The forecast in the near future doesn't seem to show any major events that might slow down progress. There has been some hay cut around the state, as well. Farmers are trying to get one more cutting before fall sets in and harvest really gets going. The current drought monitor showed about 52 percent of the state impacted by some level of drought. Boxed beef cutouts closed on Friday at 252.40 and 226.65, for choice and select cuts, respectively. For the week, choice closed 4.86 lower and select closed 8.08 lower. As of Friday afternoon's report, negotiated feedlot volume was reported at 71,054 head, with live sales 142.00-149.00 and dressed sales 225.00-230.00. The Missouri Stocker Formula consists of 5338 head with a weighted average weight of 541.48 lbs and a price value of 199.46, 4.55 lower than a week ago.

The Weekly Market Summary, as well as historical summaries, are available on our website <https://agmarketnews.mo.gov/summaries>  
 Market News Hotline: 1-573-522-9244

### Missouri Stocker Formula - Steers

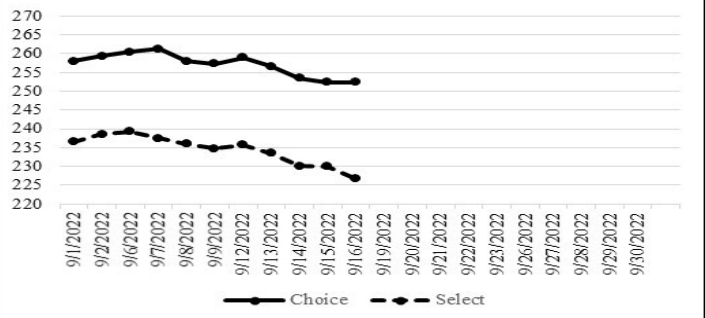


\*Graph is updated the first Monday of each month.

### NATIONAL BOXED BEEF CUTOUT/BOXED BEEF CUTS

DATE	CHOICE	SELECT	TOTAL LOADS
09/12	258.94	235.76	97
09/13	256.66	233.58	172
09/14	253.47	230.11	210
09/15	252.34	229.95	145
09/16	252.40	226.65	139
5 Day Simple Average	254.76	231.21	

### Boxed Beef Cuts September 2022



\*Axis value ranges may be updated to reflect data points.

### WEEKLY LIVESTOCK SLAUGHTER 09/17/22

	CATTLE	HOGS	SHEEP
Week to Date:	667,000	2,465,000	34,000
Last Week:	604,000	2,243,000	28,000
Last Year:	650,000	2,545,000	37,000

**SOUTHWEST MISSOURI WEEKLY SUMMARY**

(Joplin and Springfield)

Receipts: 11,725 Week ago: 1562 Year ago: 9137

Compared to last week, steers and heifers 2.00 to 8.00 lower. Slaughter cows steady to 3.00 lower. Slaughter bulls steady to 2.00 higher.

**FEEDER STEERS:**  
Medium and Large 1

300-400 lbs.	197.00-231.00
400-450 lbs.	197.00-220.00
500-600 lbs.	187.00-214.00
600-700 lbs.	185.00-199.00
700-800 lbs.	165.00-190.00
800-900 lbs.	173.00-176.00
900-950 lbs.	167.00

**FEEDER HEIFERS:**  
Medium and Large 1

300-350 lbs.	171.00-187.00
400-500 lbs.	165.00-186.00
500-600 lbs.	166.00-177.00
600-700 lbs.	154.00-176.00
700-800 lbs.	146.00-172.00
800-900 lbs.	146.00-162.00
900-1000 lbs.	151.00-162.00

**FEEDER HOLSTEIN STEERS**  
Large 3

450-500	133.00
550-600	127.00-140.00
600-700	111.50-131.00
700-800	128.00-129.50
Pkg 913	115.00

**SLAUGHTER COWS:** Breaking and Boning (70-85% lean) 72.00-87.00; high dressing 80.00-94.00; low dressing 65.00-79.00. Lean (85-90%) 64.00-78.00

**SLAUGHTER BULLS:** Yield Grade 1-2 1220-2325 lbs. 100.00-116.00; high dressing 114.00-136.00; low dressing 85.00-101.00

**BRED COWS:** Medium and Large 1 2-8 yrs 1070-1430 lbs 2nd to 3rd stage 1475.00-1800.00. Medium and Large 1-2 2-4 yrs 923-1310 lbs 1st to 3rd stage 1100.00-1650.00; 2-8 yrs 910-1460 lbs 2nd to 3rd stage 875.00-1575.00, 1st stage 850.00-1125.00; registered cows 1100.00-1700.00; over 8 yrs 1040-1420 lbs 2nd to 3rd stage 800.00-1400.00 per head

**COW & CALF PAIRS:** Medium and Large 1-2 2-8 yrs 900-1185 lbs with baby to 150 lb calves 1125.00-1625.00; 2-8 yrs 945-1435 lbs with 150-300 lb calves 1175.00-1900.00; 2-4 yrs 905-1290 lbs rebred and registered with over 300 lb calves 1500.00-2400.00; 2-8 yrs 960-1280 lbs some rebred with over 300 lb calves 1300.00-1925.00 per pair

**SOUTH CENTRAL MISSOURI WEEKLY SUMMARY**

(West Plains)

Receipts: 3747 Week ago: 2450 Year Ago: 5013

Compared to last week, feeder calves 3.00 to 6.00 lower, yearling steers steady and yearling heifers not well tested. Slaughter cows and bulls steady.

**FEEDER STEERS:**  
Medium and Large 1

350-400 lbs.	205.00-217.00
400-500 lbs.	200.00-217.00
500-600 lbs.	188.00-205.00
600-700 lbs.	185.50-195.00
700-750 lbs.	177.00-186.00
800-900 lbs.	168.50-170.00

**FEEDER HEIFERS:**  
Medium and Large 1

300-400 lbs.	180.00-189.00
400-500 lbs.	173.00-180.00
500-600 lbs.	170.00-178.75
600-700 lbs.	165.00-172.00
26 hd 700 lbs.	166.00
12 hd 815 lbs.	155.00

**FEEDER HOLSTEIN STEERS**  
Large 3

Scarce Scarce

**SLAUGHTER COWS:** Breaking and Boning (70-85% lean) 78.00-87.50; high dressing 87.00-96.00; low dressing 71.00-79.00. Lean (85-90%) 62.00-75.00

**SLAUGHTER BULLS:** Yield Grade 1-2 1085-1975 lbs. 100.00-113.00; high dressing 113.00-119.00; low dressing 79.00-99.00

**BRED COWS:** Medium and Large 1-2 2-8 yrs 970-1475 lbs 2nd to 3rd stage 1000.00-1350.00 per head

**COW & CALF PAIRS:** Scarce

**BRED HEIFERS:** Medium and Large 1-2 few 835-875 lbs 1st to 3rd stage 750.00-1000.00 per head

**WEST CENTRAL MISSOURI WEEKLY SUMMARY**

(Kingsville, Windsor, Butler)

Receipts: 5227 Week ago: 2478 Year ago: 5030

Compared to last week, steers and heifers steady to 3.00 higher. Slaughter cows steady to 4.00 lower.

**FEEDER STEERS:**  
Medium and Large 1

300-400 lbs.	214.00-236.50
400-500 lbs.	199.50-236.00
500-600 lbs.	188.00-223.00
600-700 lbs.	181.50-217.50
700-800 lbs.	177.00-195.50
800-900 lbs.	167.00-183.50

**FEEDER HEIFERS:**  
Medium and Large 1

300-400 lbs.	189.00-228.00
400-500 lbs.	181.00-210.00
500-600 lbs.	164.00-196.00
600-700 lbs.	168.50-193.00
700-750 lbs.	158.00-182.35
800-900 lbs.	156.85-162.85

**SLAUGHTER BULLS:** Yield Grade 1-2 1355-2070 lbs 103.00-119.00; high dressing 116.00-118.00

**SLAUGHTER COWS:** Breaking and Boning (70-85% lean) 72.00-90.00, high dressing 84.00-93.50. Lean (85-90%) 64.00-78.00

**BRED COWS:** Scarce

**COW & CALF PAIRS:** Scarce

**NORTHEAST MISSOURI WEEKLY SUMMARY**

(Bowling Green, Kingdom City, Palmyra)

Receipts: 5070 Week ago: 2292 Year ago: 4151

Compared to last week, 400-650 lb steers and heifers sold firm to 5.00 higher, with 500-550 lb steers selling spots 7.00-8.00 higher, feeders over 650 lbs sold with a firm to higher undertone on light comparisons. Slaughter cows sold 3.00-6.00 lower.

**FEEDER STEERS:**  
Medium and Large 1

400-500 lbs.	214.00-240.00
500-600 lbs.	203.00-225.00
600-700 lbs.	184.00-216.50
700-750 lbs.	180.25-187.00
800-900 lbs.	172.25-187.00
56 hd 929 lbs.	

**FEEDER HEIFERS:**  
Medium and Large 1

400-500 lbs.	191.00-211.00
500-600 lbs.	183.00-196.00
600-700 lbs.	177.00-190.25
700-800 lbs.	170.50-176.00

**SLAUGHTER BULLS:** Yield Grade 1-2 1315-2310 lbs 100.00-117.50; high dressing 115.00-127.00

**SLAUGHTER COWS:** Breaking and Boning, (70-85% lean) 78.00-88.00; high dressing 85.00-101.50; low dressing 68.00-80.50. Lean (85-90%) 71.00-81.00

**SLAUGHTER STEERS:** Choice and Prime 2-3 154.50. Choice and Prime 2-4 156.00. Choice 2-3 147.00-151.00. Choice 3-4 140.00-146.50. Select and Choice 2-3 144.00-146.50

**BRED COWS:** Medium and Large 1 7 head 2-8 yrs 1390 lbs 3rd stage 1800.00; 7 head over 5 yrs 1359 lbs 3rd stage 1370.00. Medium and Large 1-2 2-8 yrs 1040-1360 lbs 1st to 2nd stage 1040.00-1240.00, 3rd stage 1350.00-1575.00 per head

**SLAUGHTER HEIFERS:** Choice 2-3 144.50-150.50. Choice 2-3 144.50-150.50. Choice 3-4 144.00-147.50

**COW & CALF PAIRS:** Medium and Large 1 2-8 yrs 1100-1300 lbs with baby to 300 lb calves 1825.00-2300.00 per pair

**NORTH CENTRAL MISSOURI WEEKLY SUMMARY**

(Macon, Unionville, Green City, New Cambria) (w/e 9/9/22)

Receipts: 5890 Week ago: 2057 Year ago: 3930

Compared to the recent sales, steers and heifers firm to higher undertone. Slaughter cows steady to firm.

\*Sale barns on a summer schedule and may not have a sale each week.

**FEEDER STEERS:**  
Medium and Large 1

400-500 lbs.	210.00-238.00
500-600 lbs.	197.75-224.75
600-700 lbs.	187.25-217.25
700-800 lbs.	182.00-196.00
800-900 lbs.	173.75-187.00
900-1000 lbs.	175.00-177.00

**FEEDER HEIFERS:**  
Medium and Large 1

400-500 lbs.	190.00-208.00
500-600 lbs.	167.00-208.75
600-700 lbs.	180.00-196.25
700-800 lbs.	174.00-184.75
800-900 lbs.	160.00-175.00
900-1000 lbs.	164.75-167.50

**SLAUGHTER BULLS:** Yield Grade 1-2 1380-2340 lbs 104.50-125.00

**SLAUGHTER COWS:** Breaking and Boning, (70-85% lean) 74.50-92.50; high dressing 89.50-97.00. Lean (85-90%) 67.00-83.50

**BRED COWS:** Scarce

**COW & CALF PAIRS:** Scarce

**SOUTHEAST MISSOURI WEEKLY SUMMARY**

(Jackson and Farmington)

Receipts: 2187 Week ago: 1284 Year ago: 2624  
 Compared to last week, steers and heifers steady to 9.00 lower.  
 Slaughter cows and bulls steady to 1.00 lower.

**FEEDER STEERS:**  
 Medium and Large 1

300-400 lbs. 180.00-220.00  
 400-500 lbs. 170.00-208.00  
 500-600 lbs. 172.00-200.00  
 600-700 lbs. 151.00-185.00  
 700-800 lbs. 145.00-172.50

**FEEDER HEIFERS:**  
 Medium and Large 1

300-400 lbs. 155.00-182.00  
 400-500 lbs. 145.00-170.00  
 500-600 lbs. 140.50-175.00  
 600-700 lbs. 141.00-169.00  
 700-800 lbs. 130.00-161.00

**SLAUGHTER BULLS:** Yield Grade 1-2 975-2380 lbs. 84.00-105.00, high dressing 107.00-123.00; low dressing few 75.00-80.00

**SLAUGHTER COWS:** Breaking and Boning (75-85% lean) 68.00-83.50; high dressing 72.00-92.00. Lean (85-90% lean) 52.00-68.00

**BRED COWS:** Medium and Large 2 2-8 yrs 995-1435 lbs 1st to 3rd stage 750.00-1350.00; over 8 yrs 1045-1290 lbs 2nd to 3rd stage 950.00-975.00 per head

**COW & CALF PAIRS:** Medium and Large 2 2-8 yrs 1000-1200 lbs with 150 lb to over 300 lb calves 1200.00-1875.00 per pair

**EAST CENTRAL MISSOURI WEEKLY SUMMARY**

(Cuba, Vienna)

Receipts: 4284 Week ago: 1606 Year ago: 3323  
 Compared to last week, steers steady to 4.00 higher, heifers under 550 lbs steady to 10.00 lower and over 550 lbs steady to 2.00 higher.  
 Slaughter cows 2.00 to 3.00 lower.

**FEEDER STEERS:**  
 Medium and Large 1

300-400 lbs. 235.00-246.00  
 400-500 lbs. 214.00-230.00  
 500-600 lbs. 200.50-222.50  
 600-700 lbs. 186.00-211.50  
 700-800 lbs. 176.00-182.75  
 Pkg 805 lbs. 168.00

**FEEDER HEIFERS:**  
 Medium and Large 1

300-400 lbs. 190.00-219.00  
 400-500 lbs. 189.00-211.00  
 500-600 lbs. 172.50-195.00  
 600-700 lbs. 170.00-188.50  
 700-750 lbs. 165.50-172.00  
 Pkg 855 lbs. 155.00

**SLAUGHTER BULLS:** Yield Grade 1-2 1275-2225 lbs 103.00-116.50; low dressing 92.00-100.00

**SLAUGHTER COWS:** Breaking and Boning, (70-85% lean) 78.00-85.50; high dressing 86.00-89.50. Lean (85-90%) 72.00-79.00

**BRED COWS:** Medium and Large 1-2 2-4 yrs 915-1040 lbs 1st to 3rd stage 1200.00-1475.00; 2-8 yrs 990-1305 lbs 1st to 3rd stage 1075.00-1250.00 per head

**COW & CALF PAIRS:** Medium and Large 1 2-8 yrs pkg 1150 lbs with 150-300 lb calves 1675.00. Medium and Large 1-2 800-935 lbs with baby to 300 lb calves 1325.00-1425.00 per pair

**NORTHWEST MISSOURI WEEKLY SUMMARY**

(Tina)

Receipts: 1660 Three weeks ago: 1303  
 Compared to three weeks ago, steers steady to 6.00 lower and heifers unevenly steady. Slaughter cows 2.00 to 4.00 higher.

**FEEDER STEERS:**  
 Medium and Large 1

400-500 lbs. 207.00-217.50  
 500-600 lbs. 195.00-210.50  
 600-700 lbs. 191.00-205.00  
 750-800 lbs. 180.50-187.00  
 800-850 lbs. 173.00-178.75  
 27 hd 979 lbs. 161.10

**FEEDER HEIFERS:**  
 Medium and Large 1

400-500 lbs. 181.00-195.00  
 500-600 lbs. 175.00-187.50  
 600-650 lbs. 170.00-179.00  
 700-750 lbs. 170.50-176.00  
 19 hd 802 lbs. 164.50  
 Pkg 895 lbs. 142.00

**SLAUGHTER BULLS:** Yield Grade 1-2 1165-2165 lbs 92.50-114.50; couple low dressing 88.50-89.50

**SLAUGHTER COWS:** Breaking and Boning, (70-85% lean) 73.50-85.50; high dressing 82.50-94.00. Lean (85-90%) 60.00-74.00

**BRED COWS:** Scarce

**COW & CALF PAIRS:** Scarce

**AFTERNOON NATIONAL SLAUGHTER**

**CATTLE REVIEW 09/16/22**

So far for Friday in Nebraska negotiated cash trading has been slow on light demand. Compared to the last reported market on Thursday live purchases traded steady 143.00. A few dressed purchases traded at 230.00, however, not enough for a full market trend. The last reported dressed purchase market was on Thursday with trades from 226.00-227.00. In the Western Cornbelt negotiated cash trading has been limited on light demand. In the Southern Plains negotiated cash trading has been mostly inactive on very light demand. Not enough purchases in these regions for a full market trend. In the Southern Plains Thursday was the last reported live purchase market at 142.00. In the Western Cornbelt Wednesday was the last reported live purchase market from 143.00-144.00. Last week dressed purchases traded from 225.00-230.00.

**Negotiated Cash Sales:**

<b>Confirmed:</b>	12,305	<b>Week Ago:</b>	10,073	<b>Year Ago:</b>	1,862
<b>Week to date:</b>	71,054	<b>Week Ago:</b>	78,963	<b>Year Ago:</b>	57,281

<u>Live Basis</u>	<u>Steers</u>	<u>Heifers</u>
<b>Over 80% Choice</b>	143.00-145.00, avg 143.35	143.00-145.50, avg 143.22
<b>65-80% Choice</b>		
<b>35-65% Choice</b>		
<b>0-35% Choice</b>		
<b>Total All Grades</b>	143.00-145.00, avg 143.35	143.00-145.50, avg 143.22
<u>Dressed Basis</u>		
<b>Over 80% Choice</b>	225.00-230.00, avg 228.05	226.00-230.00, avg 229.09
<b>65-80% Choice</b>	226.00	-
<b>35-65% Choice</b>	-	-
<b>0-35% Choice</b>	-	-
<b>Total All Grades</b>	225.00-230.00, avg 227.99	226.00-230.00, avg 229.09

**WEEKLY COMMODITY FUTURES TRENDS**

Compared to last week, Live Cattle steady to 0.67 lower, Lean Hogs 2.68 to 4.85 higher, Feeder Cattle 2.55 to 4.32 lower.

**Daily Futures Closes**

	Mon.	Tues.	Wed.	Thu.	Fri.
<b>Cattle</b>					
Oct	145.75	144.80	144.35	145.62	145.50
Dec	151.35	150.45	150.05	151.32	150.97
Feb	155.55	154.72	154.47	155.37	155.10
Apr	159.02	158.17	158.17	158.67	158.40
Jun	155.25	154.45	154.35	154.80	154.55
<b>Lean Hogs</b>					
Oct	91.87	95.75	94.70	96.05	96.90
Dec	82.77	85.70	85.30	87.65	87.97
Feb	87.20	89.67	89.40	91.25	91.65
Apr	92.00	93.95	93.77	95.37	95.75
May	96.90	97.85	97.97	99.12	99.45
<b>Fdr Cat</b>					
Sep	181.52	179.45	179.97	179.35	179.20
Oct	183.12	180.52	181.42	180.92	181.25
Nov	184.80	182.35	182.97	182.77	182.75
Jan	185.90	183.77	184.22	184.22	184.25
Mar	188.35	186.62	187.10	187.05	186.92
<b>Milk</b>					
Sep	19.89	19.93	19.91	19.83	19.88
Oct	21.67	21.61	21.61	21.38	21.45
Nov	22.05	21.77	21.73	21.39	21.42

**WEEKLY COMMODITY GRAIN FUTURES TRENDS**

Compared to last week, Soybeans 0.33 to 0.38 higher, Wheat 0.06 to 0.10 lower, Corn 0.06 to 0.10 lower, KC Wheat 0.04 to 0.06 higher, Soybean Meal 4.30 to 14.80 higher.

Daily Grain Futures Closes

	Mon.	Tues.	Wed.	Thu.	Fri.
<b>Soybeans</b>					
Sep	1549 3/4	1534 1/4	1503 3/4	—	—
Nov	1488 1/4	1478 3/4	1455	1451 1/2	1448 1/2
Jan	1492 1/4	1484	1461	1458	1455 1/4
Mar	1490	1483 1/4	1461 1/4	1458 1/4	1456
May	1488	1483 1/4	1461 3/4	1458 3/4	1457
<b>Wheat</b>					
Sep	841 1/4	842 3/4	853 3/4	—	—
Dec	858 3/4	860 1/2	872 1/4	845	859 3/4
Mar	873 1/4	876 3/4	888	860 1/2	874 3/4
May	881 1/4	886 1/4	897	869 1/2	884
Jul	875 1/2	880	890 1/4	860 3/4	875 3/4
<b>Corn</b>					
Sep	712 1/4	709	709	—	—
Dec	696	692 3/4	682 1/4	677 1/2	677 1/4
Mar	699 1/2	697 1/4	687 1/4	682 3/4	683
May	699	697 3/4	688 1/4	682 3/4	683 1/2
Jul	692 1/2	691 3/4	683	676 1/4	677 1/2
<b>KC Wheat</b>					
Sep	937 1/4	944	961 1/2	—	—
Dec	927	933 3/4	947	926 1/4	935 1/4
Mar	927 3/4	934	946 3/4	925 1/4	934 1/4
May	928	933 3/4	944 3/4	923 1/4	933 3/4
Jul	917 3/4	923	931	908	921 1/4
<b>SB Meal</b>					
Sep	472.90	462.10	461.30	—	—
Oct	439.80	428.90	429.60	434.50	429.60
Dec	434.60	423.80	423.10	428.00	421.70
Jan	430.30	420.60	419.60	423.50	416.40
Mar	424.40	415.10	414.20	417.40	408.90

**MISSOURI GRAIN WEEKLY TRENDS**

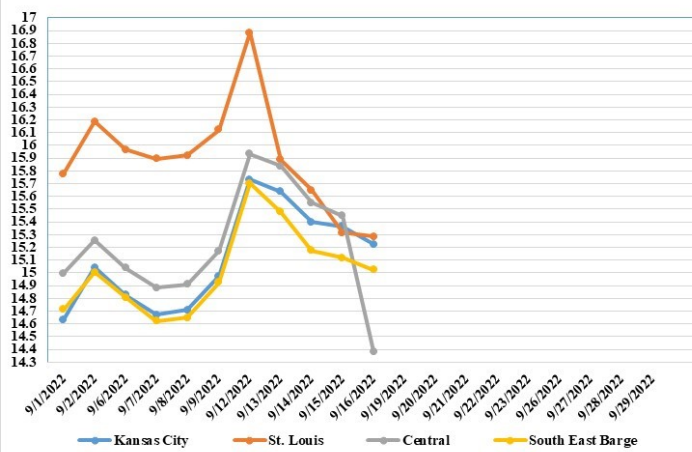
Compared to last week, Soybeans 0.83 lower to 0.37 higher, Wheat 0.13 lower to 0.11 higher, Corn 0.43 lower to 0.07 higher, Sorghum 0.08 to 0.28 lower.

Area	#1 Soybeans	#2 Soft Wheat	#2 Corn	#2 Grain Sorghum
<b>Kansas City</b>				
Friday**	13.97-15.67	8.90	7.45-7.65	7.20
Monday	14.73-16.43	8.79	7.66-7.76	7.32
Tuesday	14.64-16.34	9.01	7.53-7.73	7.28
Wednesday	14.40-16.10	9.12	7.42-7.62	7.17
Thursday	14.37-16.07	8.85	7.03-7.43	7.13
Friday	14.34-15.59	9.00	7.02-7.32	7.12
<b>St. Louis</b>				
Friday**	16.12	8.58-8.70	7.57	6.59-7.05
Monday	16.88	8.49-8.59	7.70	6.72-6.76
Tuesday	15.89	8.49-8.51	7.52	6.53-6.93
Wednesday	15.65	8.60-8.62	7.42	6.42-6.82
Thursday	15.32	8.28-8.35	7.38	6.38-6.78
Friday	15.28	8.45-8.50	7.13	6.37-6.77
<b>Central</b>				
Friday**	15.07-15.22	8.38	7.25-7.35	—
Monday	15.83-15.98	8.27-8.39	7.36-7.46	—
Tuesday	15.74-15.89	8.29-8.41	7.33-7.43	—
Wednesday	15.35-15.65	8.40-8.52	7.22-7.32	—
Thursday	15.12-15.62	8.13-8.25	7.18-7.28	—
Friday	14.39	8.40	7.17	—
<b>S.E. MO</b>				
Friday**	14.78-15.02	8.70	6.96-7.19	—
Monday	15.59-15.78	8.59	6.46-7.56	—
Tuesday	15.39-15.54	8.61	7.13	—
Wednesday	15.15-15.20	8.72	7.02	—
Thursday	15.07-15.18	8.45	6.98	—
Friday	14.95-15.09	8.60	6.87-6.97	—

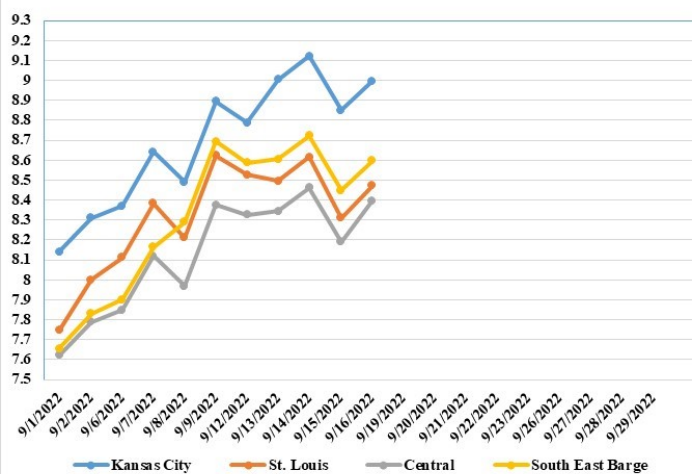
(PRICES PER BUSHEL) \*NEW CROP \*\*PREVIOUS WEEK'S PRICES  
\*Bids calculated using Kansas City, St. Louis, and St. Joseph bids

**MONTHLY GRAIN CROP**

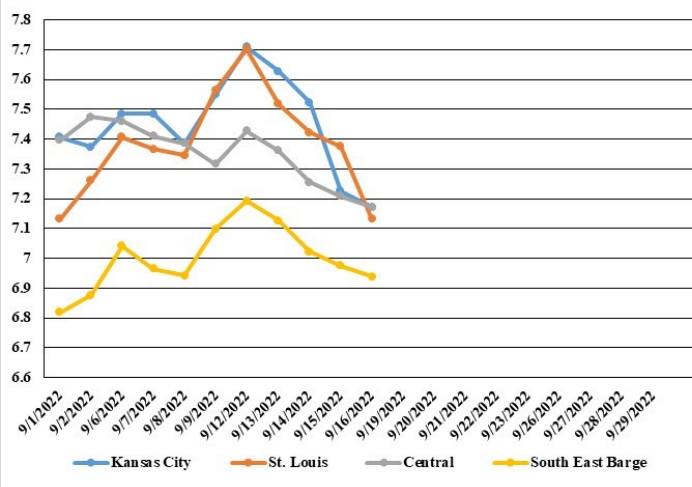
September 2022 Soybean Bids



September 2022 Wheat Bids



September 2022 Corn Bids



\*Axis value ranges may be updated to reflect data points.

**WHOLESALE FEEDSTUFFS PRICES 09/16/22**  
(DOLLARS PER TON-BULK BASIS)

Area	Soybean Hulls - Pellets	Soybean Meal 46.5-48%	Corn Gluten Pellets 21%	Wheat Middlings
Kansas City	295.00	470.60	316.00	272.50
St. Louis	n/a	n/a	300.00	252.50

## CROP PRODUCTION

**Corn** Production Down 3 Percent from August Forecast Soybean Production Down 3 Percent Cotton Production Up 10 Percent Corn production for grain is forecast at 13.9 billion bushels, down 3 percent from the previous forecast and down 8 percent from 2021. Based on conditions as of September 1, yields are expected to average 172.5 bushels per harvested acre, down 2.9 bushels from the previous forecast and down 4.5 bushels from last year. Acreage updates were made in several States based on a thorough review of all available data. Total planted area, at 88.6 million acres, is down 1 percent from the previous estimate and down 5 percent from the previous year. Area harvested for grain is forecast at 80.8 million acres, down 1 percent from the previous forecast and down 5 percent from the previous year.

**Soybean** production for beans is forecast at 4.38 billion bushels, down 3 percent from the previous forecast and down 1 percent from 2021. Based on conditions as of September 1, yields are expected to average 50.5 bushels per acre, down 1.4 bushels from the previous forecast and down 0.9 bushel from 2021. Total planted area, at 87.5 million acres, is down 1 percent from the previous estimate but up less than 1 percent from the previous year. Area harvested for beans in the United States is forecast at 86.6 million acres, down 1 percent from the previous forecast but up less than 1 percent from 2021. Acreage updates were made in several States based on a thorough review of all available data.

**All cotton** production is forecast at 13.8 million 480-pound bales, up 10 percent from the previous forecast but down 21 percent from 2021. Based on conditions as of September 1, yields are expected to average 843 pounds per harvested acre, down 3 pounds from the previous forecast but up 24 pounds from 2021. Upland cotton production is forecast at 13.4 million 480-pound bales, up 10 percent from the previous forecast but down 22 percent from 2021. Pima cotton production is forecast at 460,000 bales, up 13 percent from the previous forecast and up 39 percent from 2021. All cotton area harvested is forecast at 7.88 million acres, up 10 percent from the previous forecast but down 23 percent from 2021. All cotton planted area totaled 13.8 million acres, up 11 percent from the previous forecast and up 23 percent from 2021.

**California Navel orange** production for the 2022-2023 season is forecast at 1.52 million tons (38.0 million boxes) up 19 percent from last season. The initial forecast is based on an objective measurement survey conducted in California's Central Valley from mid-June to the beginning of September. The objective measurement survey indicated that fruit set was up 47 percent from last year but the average fruit size was down 2 percent from last year. Harvest is expected to begin in October.

## MISSOURI WEEKLY HAY SUMMARY 09/15/22

Fall can certainly be felt in the air now. Temperature swings are requiring a light jacket or flannel shirt in the early hours of the day, but it doesn't take long till one heats up and one has to shed it for the afternoon. Some farmers are into corn harvest now, but as a whole, the state is still in the very early stages of fall harvest. Some are still making hay although it's not the easiest to dry down with the wet nights and cooler air. Pastures conditions are mostly unchanged for the week as of the latest crop condition report. Hay supplies are listed at 38 percent very short to short, 62 percent adequate, and zero percent surplus. Hay movement is moderate, demand is moderate to good and prices are steady to firm. Missouri Department of Agriculture has a hay directory visit <http://mda.mo.gov/abd/haydirectory/>. For listings of hay: <http://agebb.missouri.edu/haylst/>

Alfalfa - Supreme 250.00-300.00, small square 10.00-15.00 per bale  
Alfalfa - Premium 180.00-250.00  
Alfalfa - Good 150.00-180.00, small square 5.00-9.00 per bale  
Alfalfa - Fair 125.00-150.00  
Alfalfa/grass mix - Good/Premium small square 5.00-9.00 per bale  
Mixed grass - Good/Premium 125.00-175.00  
Mixed grass - Fair/Good 100.00-150.00, small square 5.00-8.00 per bale  
Mixed grass - Fair 50.00-85.00 per large round bale  
Wheat straw - 4.00-7.00 per small square bale

Please Note: The above volumes (tonnage, acres, and bales) listed on this USDA LPGMN report are for confirmed trades only, it does not include estimated volume (tonnage) for bids or offers to the trade.

The current hay directory can be found at:

<https://apps.mda.mo.gov/HayDirectory>.

List your hay for sale at:

<https://agmarketnews.mo.gov/hay-directory/hay-listing-online-form#no-back>

## MISSOURI WEEKLY SHEEP/GOAT AUCTION SUMMARY

Receipts: 1806 Week Ago: 570 Last Year: 316

All prices CWT unless otherwise noted.

**SHEEP:** Feeder lambs Medium and Large 1-2 30 lbs 270.00-275.00. Small and Medium 1-2 hair 35-50 lbs 200.00-235.00; 40-50 lbs fancy 227.50-310.00. Slaughter lambs Choice 1-3 woolled and shorn pkg 58 lbs 175.00; 65-95 lbs 130.00-135.00. Choice and Prime 1 woolled pkg 66 lbs 200.00. Choice and Prime 1-2 woolled 45-65 lbs 150.00-210.00; 70-80 lbs 145.00-185.00; 90-100 lbs 100.00-142.00. Choice and Prime 1-2 hair 40-50 lbs 250.00-265.00; 50-70 lbs 200.00-260.00; 70-80 lbs 160.00-200.00; 90-130 lbs 125.00-170.00. Choice and Prime 1-3 hair 55-65 lbs 227.50-290.00. Choice 1-2 hair 55-65 lbs 210.00; 80-85 lbs 150.00-165.00. Choice 1-3 hair 50-60 lbs 227.50-240.00; 60-80 lbs 155.00-235.00; 80-100 lbs 135.00-182.00. Good 1-2 hair pkg 92 lbs 135.00. Slaughter ewes Utility and Good 1-3 140-240 lbs 85.00-105.00. Utility and Good 2 95-165 lbs 110.00-140.00. Utility and Good 2-3 pkg 118 lbs 82.00. Good 2-3 hair 90-170 lbs 135.00-160.00. Utility and Good 1-3 hair 85-100 lbs 125.00-150.00; 100-125 lbs 100.00-135.00. Cull and Utility 1-2 hair 90-115 lbs 100.00-105.00. Slaughter bucks 1-2 150-170 lbs 125.00-130.00. Hair bucks 1-2 95-145 lbs 105.00-130.00; 150-185 lbs 102.50-130.00. Replacement ewes Medium and Large 1-2 2-4 yrs 110-130 lbs exposed 145.00-152.00. Small and Medium 1-2 hair 2-4 yrs 85 lbs exposed 200.00.

**GOATS:** Feeder kids Selection 1 30-50 lbs 300.00-400.00. Selection 1-2 20-40 lbs 220.00-250.00. Selection 2 25-50 lbs 205.00-305.00. Selection 3 30-50 lbs 155.00-190.00; pygmies 105.00-155.00. Wether kids Selection 2 pkg 31 lbs 230.00. Slaughter kids Selection 1 50-70 lbs 287.50-350.00. Selection 1-2 40-75 lbs 240.00-290.00. Selection 2 50-60 lbs 217.50-297.50; 60-70 lbs 242.50-287.50; 70-80 lbs 205.00-247.50. Selection 3 50-60 lbs 155.00-185.00. Slaughter nannies/does Selection 1-2 60-95 lbs 135.00-180.00; 100-150 lbs 100.00-170.00. Slaughter bucks/billies Selection 1-2 65-85 lbs 150.00-200.00, pygmies 100.00-190.00; 80-170 lbs 155.00-227.00. Wethers Selection 3 50-60 lbs 125.00. Wether kids Selection 1 65-90 lbs 320.00-330.00. Replacement nannies/does Selection 1-2 1-2 yrs 80-90 lbs open 307.00-325.00; 2-4 yrs 100-130 lbs bred 210.00-250.00; 2-4 lbs 95 lbs exposed 175.00-190.00; 100-115 lbs exposed 270.00-340.00.

Explanatory Notes: Stage - Represents estimated lambing/kidding period (Open, Exposed, Bred, Fall = Sep-Nov, Win = Dec-Feb, Spr = Mar-May, Sum=Jun-Aug)

## NATIONAL DIRECT DELIVERED FEEDER PIG REPORT

**09/16/22** Receipts: 71,001 Week ago: 72,225 Year Ago: 113,122 Early weaned pigs steady. Feeder pigs 5.00 per head lower.

Early weaned pigs 10-12 lbs. basis: Formula 45,306 head 36.48-56.36, weighted average 43.20. Cash 20,025 head 21.00-44.00, weighted average 38.20

Feeder pigs 40 pounds basis: Cash 5,670 head 48.00-68.50, weighted average 60.68

## NATIONAL DAILY DIRECT PRIOR DAY HOG REPORTS FOR 09/16/22

**BARROWS AND GILTS (Carcass Basis):** 7,533 head  
Base Carcass Price, 88.50-102.50, weighted average 95.63

**SOWS (Live Basis):** 7,758 head  
300-500 lbs. 30.00-76.62  
Over 500 lbs. 59.63-78.98

## MISSOURI WEEKLY DIRECT SLAUGHTER CATTLE REPORT 09/16/22

Weekly Receipts: 320 Week ago: 320 Year ago: 280  
Trading as of Friday morning: light to moderate with flat dressed sales steady and grid dressed sales inactive.

**LIVE STEERS & HEIFERS:** No sales reported  
**DRESSED STEERS & HEIFERS:** 8 loads flat Thu 226.00

**GRADE AND WEIGHT (Grid):** no sales reported

Click here for the current [National Crop Progress](#)

Click here for the current [Missouri Crop Progress](#)