

# Weekly Market Summary

Published by:  
**Missouri Department of Agriculture**  
**Ag Business Development Division**  
**Market News Program**



Chris Chinn, Director  
 Jill Wood, Division Director  
 Tony Hancock, Editor  
<http://www.ams.usda.gov/marketnews.htm>  
[agmarketnews.mo.gov](http://agmarketnews.mo.gov)

Michael L. Parson, Governor

Volume XLII, Number 39 ♦ P.O. Box 630, Jefferson City, MO 65102 ♦ (573) 751-4211 ♦ Monday, October 03, 2022

## MISSOURI WEEKLY FEEDER CATTLE WEIGHTED AVERAGE REPORT

Receipts: 24,574 Week ago: 17,640 Year ago: 19,419

Steers and Heifers Medium and Large 1—Weighted average weights and prices

### STEERS: Medium and Large 1

333 lbs. 210.07	526 lbs. 202.92	723 lbs. 179.43	929 lbs. 168.49
382 lbs. 213.37	578 lbs. 196.46	781 lbs. 178.30	968 lbs. 162.00
423 lbs. 209.82	621 lbs. 189.44	827 lbs. 179.13	
471 lbs. 207.45	676 lbs. 184.22	868 lbs. 174.65	

### HEIFERS: Medium and Large 1

296 lbs. 193.50	474 lbs. 174.13	675 lbs. 172.04
338 lbs. 188.33	522 lbs. 171.44	719 lbs. 169.83
378 lbs. 184.56	575 lbs. 170.61	777 lbs. 157.79
425 lbs. 179.60	627 lbs. 173.58	820 lbs. 156.74

### Missouri Steer (Heifer) Stocker Formula for 10/03/2022

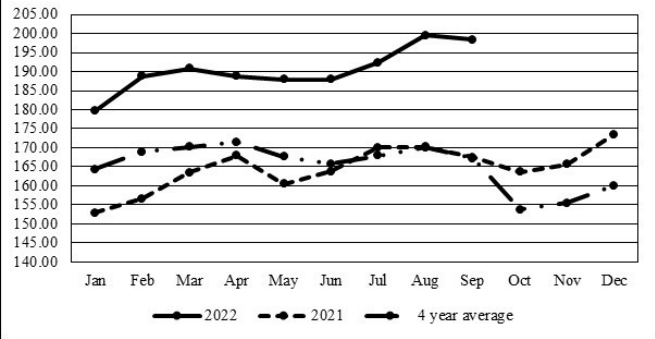
Monday's Missouri Stocker Formula consists of **4459 (4523)** head with a weighted average weight of **541.84 (534.71)** lbs. and a price value of **192.40 (166.18)**, 0.90 lower (3.88 lower) than last Monday.

This a rolling seven day calculated weighted value which combines all Feeder Steers reported by MDA/USDA Market News Service weighing from 400-649 lbs. in the Medium and Large 1 and Medium and Large 1-2 frame and muscle classifications, including all comment cattle except Brahman X. Heifer values are in parentheses.

### Missouri Weekly Cattle Auction Summary 10/03/2022

Compared to last week calves sold mostly 5.00 to 10.00 lower and yearlings sold mostly steady. Individual markets around the state varied tremendously with some barns seeing instances as much as 20.00 lower while others had instances of up to 10.00 higher. Thirty plus degree weather swings between day and night has brought a lot of pressure to the market. This is typically always the case in October and buyers just do not want to buy calves without good weaning and vaccination records. Dryness is once again becoming a concern for many in the state, although a few areas in the southwest never got enough rain to help all summer and are in exceptional drought status. States like KS, OK and TX have also been dry and hopes of turning calves out on wheat pastures is not good, which limits outlets for calves and anything that decreases demand is bad for price levels at the sale barns. There are still good prices to be found however if producers do the work and have the quality. A couple stick out sales this week included a load at Unionville Livestock Market of 880 lb. steers which sold for 188.50. Another load of steers at Tina Livestock Market which averaged 618 lbs. sold for 206.75. The biggest draft though the barns this week as at Ozarks Regional Stockyards where 227 head of 921 lb. steers sold with one drop of the hammer at 174.00. Boxed beef cutouts were mixed this week. Choice closed on Friday at 243.75, down 4.88 and select closed at 220.13, up 0.82 compared to the previous week. Negotiated feedlot sales as of Friday totaled just over 97K head. Live sales were reported mostly from 142.00-148.00 and dressed sales from 228.00-233.00. The Missouri Stocker Formula consist of 4459 head with a weighted average weight of 541.84 lbs. and a price value of 192.40, 3.88 lower than the previous week. The steer/heifer spread was 26.22.

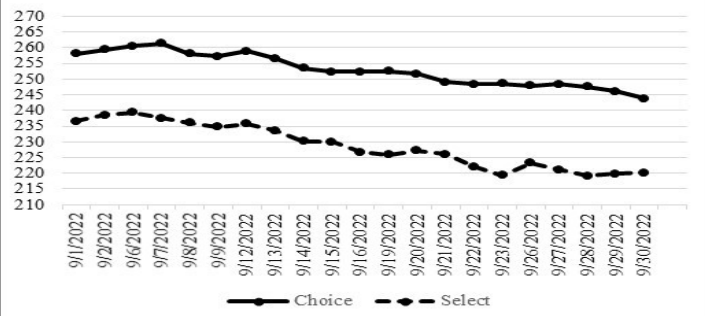
### Missouri Stocker Formula - Steers



### NATIONAL BOXED BEEF CUTOUT/BOXED BEEF CUTS

DATE	CHOICE	SELECT	TOTAL LOADS
09/26	247.84	223.35	110
09/27	248.43	221.21	171
09/28	247.55	219.21	165
09/29	246.08	219.78	150
09/30	243.75	220.13	74
5 Day Simple Average	246.73	220.74	

### Boxed Beef Cuts September 2022



\*Axis value ranges may be updated to reflect data points.

### WEEKLY LIVESTOCK SLAUGHTER 10/01/22

	CATTLE	HOGS	SHEEP
Week to Date:	664,000	2,526,000	33,000
Last Week:	667,000	2,538,000	33,000
Last Year:	640,000	2,517,000	37,000

The Weekly Market Summary, as well as historical summaries, are available on our website <https://agmarketnews.mo.gov/summaries>  
 Market News Hotline: 1-573-522-9244

**SOUTHWEST MISSOURI WEEKLY SUMMARY**

(Joplin and Springfield)

Receipts: 8861 Week ago: 7942 Year ago: 7516  
Compared to last week, steers 5.00 to 15.00 lower, heifers 2.00 to 10.00 lower. Slaughter cows steady to 4.00 lower. Slaughter bulls steady to 5.00 lower.

**FEEDER STEERS:**  
Medium and Large 1

Table with 2 columns: Weight (300-400 lbs to 900-1000 lbs) and Price Range (190.00-210.00 to 162.00-177.00)

**FEEDER HEIFERS:**  
Medium and Large 1

Table with 2 columns: Weight (300-400 lbs to 800-850 lbs) and Price Range (177.50-182.00 to 155.00-157.00)

**FEEDER HOLSTEIN STEERS**  
Large 3

Table with 2 columns: Weight (400-500 lbs to 900-1000 lbs) and Price Range (121.00-126.00 to 114.00-117.00)

**SLAUGHTER COWS:** Breaking and Boning (70-85% lean) 67.00-84.00, high dressing 75.00-89.00; low dressing 57.00-74.00. Lean (85-90%) 59.00-73.00

**SLAUGHTER BULLS:** Yield Grade 1-2 1230-2305 lbs. 94.00-111.00; high dressing 108.00-122.00; low dressing 79.50-95.00

**BRED COWS:** Medium and Large 1-2 2-8 yrs 910-1515 lbs 2nd to 3rd stage 1010.00-1400.00, 1st stage 875.00-1125.00; over 8 yrs 930-1420 lbs 2nd to 3rd stage 775.00-1175.00 per head

**COW & CALF PAIRS:** Medium and Large 1-2 couple 2-8 yrs 1225-1310 lbs with 150-300 lb calves 1300.00-1375.00 per pair

**BRED HEIFERS:** Medium and Large 1-2 yearlings 910-1190 lbs 1st to 3rd stage 885.00-1075.00 per head

**SOUTH CENTRAL MISSOURI WEEKLY SUMMARY**

(West Plains)

Receipts: 3524 Week ago: 2462 Year Ago: 5113  
Compared to last week, steers under 450 lbs 4.00 to 8.00 higher, heavier weight steer and heifer calves uneven from 4.00 lower to 4.00 higher. Too few yearlings last week for a market comparison, however undertones steady to weak. Slaughter cows and bulls 3.00 to 4.00 lower.

**FEEDER STEERS:**  
Medium and Large 1

Table with 2 columns: Weight (300-400 lbs to 900-950 lbs) and Price Range (210.00-230.00 to 166.00-166.74)

**FEEDER HEIFERS:**  
Medium and Large 1

Table with 2 columns: Weight (Pkg 359 lbs to 750-800 lbs) and Price Range (175.00 to 156.00-160.00)

**FEEDER HOLSTEIN STEERS**  
Large 3

Scarce Scarce

**SLAUGHTER COWS:** Breaking and Boning (70-85% lean) 72.50-82.50, high dressing 82.00-102.00; low dressing 65.00-74.00. Lean (85-90%) 60.00-72.50

**SLAUGHTER BULLS:** Yield Grade 1-2 1120-2210 lbs. 92.00-106.00; high dressing 106.00-114.00; low dressing 75.00-91.00

**BRED COWS:** Medium and Large 1-2 2-8 yrs 1026-1390 lbs 2nd to 3rd stage 1075.00-1300.00, 1st stage 1075.00-1100.00 per head

**COW & CALF PAIRS:** Medium and Large 1-2 2-8 yrs 1225-1230 lbs with 150-300 lb calves 1475.00-1500.00 per pair

**WEST CENTRAL MISSOURI WEEKLY SUMMARY**

(Kingsville, Windsor, Butler)

Receipts: 6149 Week ago: 3616 Year ago: 3837  
Compared to last week, bulk of steers and heifers steady to 5.00 higher, however calves sold with a weaker undertone late week. Slaughter cows and bulls 2.00 to 5.00 lower.

**FEEDER STEERS:**  
Medium and Large 1

Table with 2 columns: Weight (300-400 lbs to 800-900 lbs) and Price Range (212.50-224.00 to 165.75-185.75)

**FEEDER HEIFERS:**  
Medium and Large 1

Table with 2 columns: Weight (300-400 lbs to 800-900 lbs) and Price Range (180.00-202.00 to 153.50-161.75)

**SLAUGHTER BULLS:** Yield Grade 1-2 1305-2210 lbs 99.00-111.50; high dressing 112.00-114.00; low dressing 86.00-97.00

**SLAUGHTER COWS:** Breaking and Boning (70-85% lean) 63.00-81.50, high dressing 74.50-86.00. Lean (85-90%) 54.00-72.50

**BRED COWS:** Medium and Large 1-2 5-8 yrs 1087-1306 lbs 2nd to 3rd stage 1025.00-1125.00 per head

**COW & CALF PAIRS:** Medium and Large 1-2 2-4 yrs 1050 lbs with 150-300 lb calves 1475.00; over 5 yrs 1250 lbs with 150-300 lb calves 1385.00 per pair

**NORTHEAST MISSOURI WEEKLY SUMMARY**

(Bowling Green, Kingdom City, Palmyra)

Receipts: 4508 Week ago: 3002 Year ago: 3615  
Compared to last week, light test of 4 weight steers lower undertone, 500-600 lbs steady, over 600 lbs firm to higher undertone. Feeder heifers 400-550 lbs lower undertone on a light test, over 550 lbs steady to firm. Slaughter cows steady to spots 3.00 higher on the high dressing cows.

**FEEDER STEERS:**  
Medium and Large 1

Table with 2 columns: Weight (400-500 lbs to 800-850 lbs) and Price Range (209.00-222.50 to 180.25-184.75)

**FEEDER HEIFERS:**  
Medium and Large 1

Table with 2 columns: Weight (400-500 lbs to 700-750 lbs) and Price Range (179.00-187.00 to 168.50-177.00)

**SLAUGHTER BULLS:** Yield Grade 1-2 1265-2100 lbs 105.00-116.00; high dressing 116.00-128.00; low dressing 90.00-103.00

**SLAUGHTER COWS:** Breaking and Boning, (70-85% lean) 76.00-92.50; high dressing 85.50-98.00; low dressing 67.00-83.00. Lean (85-90%) 69.50-80.00

**SLAUGHTER STEERS:** Choice 2-3 144.00-148.00. Select 1-2 135.00-138.00

**BRED COWS:** Scarce

**SLAUGHTER HEIFERS:** Choice 2-3 144.00-146.50

**COW & CALF PAIRS:** Scarce

**NORTH CENTRAL MISSOURI WEEKLY SUMMARY**

(Macon, Unionville, Green City, New Cambria)

Receipts: 1305 Week ago: 1350 Year ago: 1088  
Compared to the recent sales, feeders 1.00 to 5.00 lower, except yearling steers 1.00 to 2.00 higher. Slaughter cows steady to weak.  
\*Sale barns on a summer schedule and may not have a sale each week.

**FEEDER STEERS:**  
Medium and Large 1

Table with 2 columns: Weight (12 hd 410 lbs to 800-900 lbs) and Price Range (208.50 to 180.50-188.50)

**FEEDER HEIFERS:**  
Medium and Large 1

Table with 2 columns: Weight (400-450 lbs to 700-800 lbs) and Price Range (181.00-184.00 to 154.50-160.00)

**SLAUGHTER BULLS:** Yield Grade 1-2 1385-2335 lbs 104.00-112.50; low dressing couple 91.50-93.50

**SLAUGHTER COWS:** Breaking and Boning, (70-85% lean) 70.00-91.00; high dressing couple 89.00-91.00. Lean (85-90%) 68.00-77.50

**BRED COWS:** Medium and Large 1 over 5 yrs 1350-1385 lbs 3rd stage 1375.00. Medium and Large 1-2 broken mouth 1227-1400 lbs 3rd stage 875.00-1075.00 per head

**COW & CALF PAIRS:** Medium and Large 1-2 2-8 yrs 1250-1275 lbs with 150-300 lb calves 1600.00-1685.00; 2-4 yrs 1100 lbs rebred with over 300 lb calves 1950.00 per pair

**SOUTHEAST MISSOURI WEEKLY SUMMARY**

(Jackson and Farmington)

Receipts: 1630 Week ago: 1712 Year ago: 1406  
 Compared to last week, steers and heifers uneven from 5.00 lower to 2.00 higher. Slaughter cows and bulls steady to 2.00 lower.

**FEEDER STEERS:**  
 Medium and Large 1

300-400 lbs.	170.00-190.00
400-500 lbs.	167.00-197.50
500-600 lbs.	167.00-193.00
600-700 lbs.	153.00-189.00
700-800 lbs.	144.00-168.00

**FEEDER HEIFERS:**  
 Medium and Large 1

300-400 lbs.	148.50-170.00
400-500 lbs.	149.00-174.00
500-600 lbs.	140.00-160.00
600-700 lbs.	135.00-162.50
700-800 lbs.	152.50-154.00
Pkg 900 lbs.	140.00

**SLAUGHTER BULLS:** Yield  
 Grade 1-2 1050-2315 lbs. 85.00-105.00, high dressing 105.00-117.00

**SLAUGHTER COWS:** Breaking and Boning (75-85% lean) 68.50-81.50; high dressing 81.00-87.50. Lean (85-90% lean) 51.00-68.00

**BRED COWS:** Medium and Large 2 2-8 yrs 1025-1240 lbs 2nd to 3rd stage 850.00-1300.00 per head

**COW & CALF PAIRS:** Medium and Large 2 2-8 yrs 1000-1250 lbs with 150-300 lb calves 1110.00-1250.00 per pair

**EAST CENTRAL MISSOURI WEEKLY SUMMARY**

(Cuba, Vienna)

Receipts: 2417 Week ago: 1594 Year ago: 1023  
 Compared to last week, steers and heifers 5.00 to 12.00 lower. Slaughter cows steady to 2.00 lower.

**FEEDER STEERS:**  
 Medium and Large 1

350-400 lbs.	196.00-210.00
400-500 lbs.	187.00-217.00
500-600 lbs.	186.00-208.25
600-650 lbs.	173.00-201.00
700-800 lbs.	164.00-183.50

**FEEDER HEIFERS:**  
 Medium and Large 1

300-400 lbs.	177.00-189.00
400-500 lbs.	166.00-183.00
500-600 lbs.	162.00-182.00
600-700 lbs.	170.00-180.00

**SLAUGHTER BULLS:** Yield  
 Grade 1-2 1320-2095 lbs 102.00-113.00; low dressing 89.00-99.00

**SLAUGHTER COWS:** Breaking and Boning, (70-85% lean) 75.50-83.50; high dressing 83.50-91.00; low dressing 70.00-77.00. Lean (85-90%) 68.00-76.00

**BRED COWS:** Medium and Large 1-2 2-8 yrs 1090-1285 lbs 2nd stage 1050.00-1150.00 per head

**COW & CALF PAIRS:** Medium and Large 1-2 5-8 yrs 1380 lbs with 150-300 lb calves 1435.00 per pair

**NORTHWEST MISSOURI WEEKLY SUMMARY**

(Tina)

Receipts: 1941 Two weeks ago: 1660  
 Compared to two weeks ago, steers 4.00 to 6.00 lower, but a comparable package of 5 weights 8.00 higher. Heifers 6.00 to 8.00 lower. Slaughter cows steady to 2.00 lower.

**FEEDER STEERS:**  
 Medium and Large 1

400-500 lbs.	201.00-224.00
500-600 lbs.	185.00-223.00
600-700 lbs.	171.00-195.00
57 hd 814 lbs..	178.60

**FEEDER HEIFERS:**  
 Medium and Large 1

400-500 lbs.	180.00-192.00
500-600 lbs.	170.00-183.00
600-650 lbs.	153.50-181.00
700-750 lbs.	159.25-167.60
800-850 lbs.	153.50-155.25

**SLAUGHTER BULLS:** Yield  
 Grade 1-2 1095-2190 lbs 88.00-102.50

**SLAUGHTER COWS:** Breaking and Boning, (70-85% lean) 71.00-85.75; high dressing 80.00-94.50. Lean (85-90%) 59.00-69.00

**BRED COWS:** Medium and Large 1-2 2-8 yrs 941-1550 lbs 2nd to 3rd stage 1510.00-1675.00. Medium and Large 2 2-8 yrs 1020-1416 lbs 2nd to 3rd stage 1075.00-1275.00 per head

**COW & CALF PAIRS:** Medium and Large 1-2 2-8 yrs 1006-1310 some rebred with 150 lb to over 300 lb calves 147500-1900.00 per pair

**AFTERNOON NATIONAL SLAUGHTER CATTLE REVIEW 09/30/22**

So far for Friday negotiated cash trading in the Western Cornbelt has been limited on light demand. In the Southern Plains and Nebraska negotiated cash trading has been mostly inactive. Not enough purchases in any price range in any region for a full market trend. Wednesday was the last reported market in these regions. In the Southern Plains live purchases traded at 143.00. In Nebraska live and dressed purchases traded from 144.00-145.00 and from 228.00-233.00, respectively. In the Western Cornbelt live and dressed purchases traded at 145.00 and at 228.00, respectively.

Negotiated Cash Sales:					
Confirmed:	4,755	Week Ago:	9,483	Year Ago:	6,452
Week to date:	97,384	Week Ago:	110,427	Year Ago:	90,240

Live Basis	Steers	Heifers
Over 80% Choice	147.00-148.00, avg 147.53	144.00-147.0, avg 145.61
65-80% Choice	140.00	-
35-65% Choice	-	-
0-35% Choice	-	-
Total All Grades	140.00-148.00, avg 146.70	144.00-147.00, avg 145.61
Dressed Basis		
Over 80% Choice	226.00-228.00, avg 227.62	-
65-80% Choice	-	-
35-65% Choice	-	-
0-35% Choice	-	-
Total All Grades	226.00-228.00, avg 227.62	-

**WEEKLY COMMODITY FUTURES TRENDS**

Compared to last week, Live Cattle 0.98 to 2.12 lower, Lean Hogs 3.40 to 7.63 lower, Feeder Cattle 3.63 to 4.18 lower.

Daily Futures Closes

	Mon.	Tues.	Wed.	Thu.	Fri.
Cattle					
Oct	143.47	143.57	143.05	144.12	143.27
Dec	147.35	146.90	146.27	147.77	147.05
Feb	151.45	150.85	150.17	151.35	150.65
Apr	155.12	154.52	153.87	154.97	154.30
Jun	151.40	150.72	150.10	151.25	150.92
Lean Hogs					
Oct	90.37	88.70	89.37	89.45	89.22
Dec	79.40	76.25	75.82	75.72	76.66
Feb	83.65	80.35	79.47	79.07	79.42
Apr	89.20	86.60	85.22	84.77	85.30
May	94.00	91.25	89.87	89.75	90.17
Fdr Cat					
Sep	176.87	175.70	175.37	175.97	—
Oct	177.07	176.12	175.00	177.32	174.17
Nov	177.05	176.27	175.27	177.82	174.62
Jan	177.72	176.80	175.95	178.42	175.67
Mar	180.12	179.12	178.27	180.50	178.07
Milk					
Sep	19.87	19.88	19.89	19.87	19.85
Oct	20.82	21.29	21.85	21.94	21.75
Nov	20.30	20.50	20.92	20.81	20.63

**WEEKLY COMMODITY GRAIN FUTURES TRENDS**

Compared to last week, Soybeans 0.43 to 0.61 lower, Wheat 0.19 to 0.41 higher, Corn steady to 0.03 higher, KC Wheat 0.14 to 0.41 higher, Soybean Meal 12.00 to 36.70 lower.

**Daily Grain Futures Closes**

	Mon.	Tues.	Wed.	Thu.	Fri.
<b>Soybeans</b>					
Nov	1411 1/4	1408	1408 3/4	1410 3/4	1364 3/4
Jan	1416 1/4	1414	1416 1/4	1420 1/2	1375 1/2
Mar	1418 3/4	1417	1420 3/4	1424 3/4	1383 1/4
May	1421 3/4	1420 1/2	1425	1429	1390 1/2
Jul	1421	1420	1425	1429 1/2	1393
<b>Wheat</b>					
Dec	858	871 1/2	903 1/4	896 1/4	921 1/2
Mar	871 1/4	884 1/4	915	908	932
May	877 3/4	890 1/2	920 1/2	914 3/4	936 3/4
Jul	865 1/2	876	903 3/4	899	912 1/4
Sep	863 1/2	872 3/4	898 1/4	894 1/2	905
<b>Corn</b>					
Dec	666 1/4	667 1/2	670 1/2	669 1/2	677 1/2
Mar	670 3/4	672 3/4	676 1/2	676	684
May	671 1/2	673 1/2	677 1/4	677 1/2	684 1/2
Jul	665 1/4	667 3/4	671 3/4	672 1/2	678 1/4
Sep	621 1/2	621 1/4	624 1/2	626	629 1/4
<b>KC Wheat</b>					
Dec	929 1/2	943 1/4	976	966 3/4	991 1/2
Mar	926	940 1/2	972	964 1/4	985 1/4
May	923 3/4	938 1/2	969 1/4	962 3/4	979 1/2
Jul	910	922	950 1/4	945	953 1/2
Sep	905 1/4	915	941	936 1/2	940 3/4
<b>SB Meal</b>					
Oct	432.60	426.10	421.80	409.10	403.20
Dec	417.50	413.60	412.70	407.20	403.00
Jan	412.60	409.70	409.70	405.00	401.30
Mar	406.30	404.30	404.40	400.00	397.20
May	402.80	401.70	402.10	397.50	395.00

**MISSOURI GRAIN WEEKLY TRENDS**

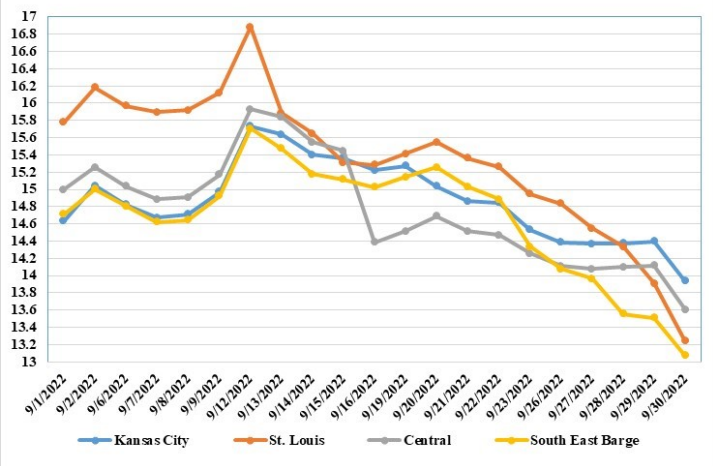
Compared to last week, Soybeans 0.12 to 1.86 lower, Wheat 0.84 lower to 0.41 higher, Corn 0.76 lower to 0.16 higher, Sorghum steady to 0.01 higher.

Area	#1 Soybeans	#2 Soft Wheat	#2 Corn	#2 Grain Sorghum
<b>Kansas City</b>				
Friday**	14.16-15.11	9.21	7.02	7.12
Monday	14.01-14.96	8.98	6.91-7.01	7.01
Tuesday	13.98-14.93	9.12	7.02-7.08	7.03
Wednesday	13.99-14.94	9.43	7.05-7.11	7.06
Thursday	14.01-14.96	9.36	7.04-7.10	7.05
Friday	13.55-14.50	9.62	7.12-7.18	7.13
<b>St. Louis</b>				
Friday**	14.95	8.41-8.71	7.04	6.37-6.77
Monday	14.83	7.98-8.48	6.96	6.26-6.66
Tuesday	14.55	8.32-8.62	6.78	6.28-6.68
Wednesday	14.34	7.93-8.43	6.76	6.31-6.56
Thursday	13.91	7.46-7.86	6.40	6.30-6.45
Friday	13.09-13.40	7.72-9.07	6.28-6.46	6.38-6.53
<b>Central</b>				
Friday**	14.16-14.36	8.61	6.97	—
Monday	14.01-14.21	8.38	6.86	—
Tuesday	13.98-14.18	8.52	6.88	—
Wednesday	14.01-14.19	8.83	6.91	—
Thursday	14.03-14.21	8.76	6.90	—
Friday	13.57-13.65	9.02	6.88-6.98	—
<b>S.E. MO</b>				
Friday**	14.16-14.61	8.81	6.55-6.82	—
Monday	14.06-14.11	8.58	6.41-6.51	—
Tuesday	13.88-14.03	8.72	6.43-6.53	—
Wednesday	13.39-13.74	9.03	6.31-6.38	—
Thursday	13.49-13.56	8.96	6.30-6.50	—
Friday	13.02-13.10	9.22	6.03-6.58	—

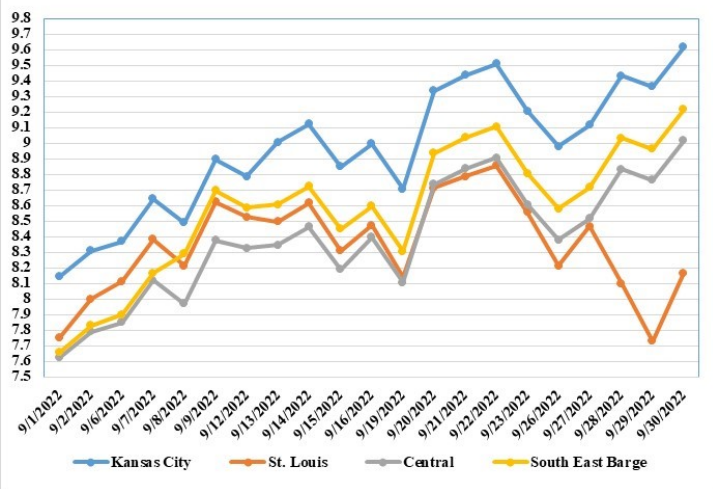
(PRICES PER BUSHEL) \*NEW CROP \*\*PREVIOUS WEEK'S PRICES  
\*Bids calculated using Kansas City, St. Louis, and St. Joseph bids

**MONTHLY GRAIN CROP**

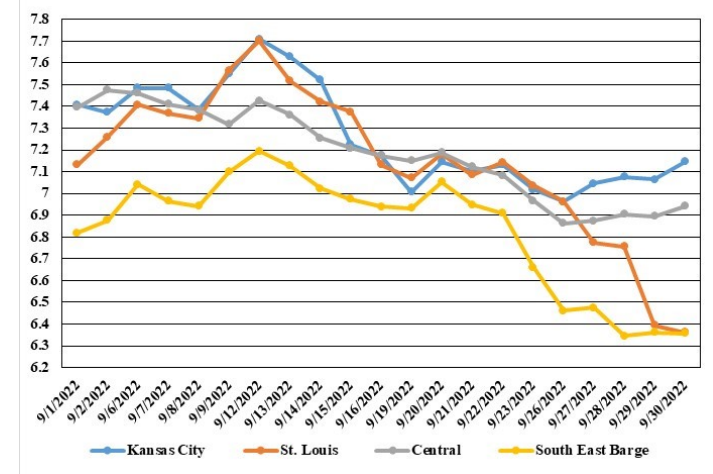
**September 2022 Soybean Bids**



**September 2022 Wheat Bids**



**September 2022 Corn Bids**



\*Axis value ranges may be updated to reflect data points.

**WHOLESALE FEEDSTUFFS PRICES 09/30/22**  
(DOLLARS PER TON-BULK BASIS)

Area	Soybean Hulls - Pellets	Soybean Meal 46.5-48%	Corn Gluten Pellets 21%	Wheat Middlings
Kansas City	293.33	439.20	324.33	285.00
St. Louis	N/A	N/A	315.00	256.00

## QUARTERLY HOGS AND PIGS 09/29/22

**United States inventory** of all hogs and pigs on September 1, 2022 was 73.8 million head. This was down 1 percent from September 1, 2021, but up 2 percent from June 1, 2022.

**Breeding inventory**, at 6.15 million head, was down 1 percent from last year, and down slightly from the previous quarter.

**Market hog inventory**, at 67.6 million head, was down 1 percent from last year, but up 2 percent from last quarter.

**The June-August 2022 pig crop**, at 33.6 million head, was down 1 percent from 2021. Sows farrowing during this period totaled 3.02 million head, down 1 percent from 2021. The sows farrowed during this quarter represented 49 percent of the breeding herd. The average pigs saved per litter was 11.13 for the June-August period, unchanged from last year.

## GRAIN STOCKS 09/30/22

**Old crop corn** stocks in all positions on September 1, 2022 totaled 1.38 billion bushels, up 12 percent from September 1, 2021. Of the total stocks, 510 million bushels are stored on farms, up 29 percent from a year earlier. Off-farm stocks, at 867 million bushels, are up 3 percent from a year ago. The June-August 2022 indicated disappearance is 2.97 billion bushels, compared with 2.88 billion bushels during the same period last year. Based on an analysis of end-of-marketing year stock estimates, disappearance data for exports, and farm program administrative data, the 2021 corn for grain production is revised down 41.4 million bushels from the previous estimate. Corn silage production is revised down 888 thousand tons. Planted area is revised to 93.3 million acres, and area harvested for grain is revised to 85.3 million acres. Area harvested for silage is revised to 6.45 million acres. The 2021 grain yield, at 176.7 bushels per acre, is down 0.3 bushel from the previous estimate. The 2021 silage yield, at 20.1 tons per acre, remains unchanged from the previous estimate. A table with 2021 acreage, yield, and production estimates by States is included on pages 17 and 18 of this report.

**Old crop soybeans** stored in all positions on September 1, 2022 totaled 274 million bushels, up 7 percent from September 1, 2021. Soybean stocks stored on farms totaled 62.9 million bushels, down 8 percent from a year ago. Off-farm stocks, at 211 million bushels, are up 12 percent from last September. Indicated disappearance for June - August 2022 totaled 698 million bushels, up 36 percent from the same period a year earlier. Based on an analysis of end-of-marketing year stock estimates, disappearance data for exports and crushings, and farm program administrative data, the 2021 soybean production is revised up 30.2 million bushels from the previous estimate. Planted area is unchanged at 87.2 million acres, but harvested area is revised to 86.3 million acres. The 2021 yield, at 51.7 bushels per acre, is up 0.3 bushel from the previous estimate.

**All wheat** stored in all positions on September 1, 2022 totaled 1.78 billion bushels, up less than 1 percent from a year ago. On-farm stocks are estimated at 591 million bushels, up 41 percent from last September. Off-farm stocks, at 1.18 billion bushels, are down 13 percent from a year ago. The June - August 2022 indicated disappearance is 543 million bushels, down 24 percent from the same period a year earlier.

## MISSOURI WEEKLY HAY SUMMARY 09/29/22

This week certainly felt like early fall, jackets were required to start the days but were quickly shed by lunch. Drought is becoming a story once again in the state, although for some it never really went away. Nearly 82 percent of the state is showing on the latest drought monitor. A few counties in southwest Missouri have now been moved into the D4 or exceptional drought stage, which is highest stage. If there is any positive to the lack of moisture, it would be that farmers are able to get in to fields and harvest grain without worries of mud or getting stuck, if they have anything to harvest that is. The supply of hay is moderate and demand is light to moderate and prices mostly steady. The Missouri Department of Agriculture has a hay directory visit <http://mda.mo.gov/abd/haydirectory/> for listings of hay <http://agebb.missouri.edu/haylst/>

Alfalfa - Supreme 250.00-300.00, small square 10.00-15.00 per bale

Alfalfa - Premium 180.00-250.00

Alfalfa - Good 150.00-180.00, small square 5.00-9.00 per bale

Alfalfa - Fair 125.00-150.00

Alfalfa/grass mix - Good/Premium small square 5.00-9.00 per bale

Mixed grass - Good/Premium 125.00-175.00

Mixed grass - Fair/Good 100.00-150.00, small square 5.00-8.00 per bale

Mixed grass - Fair 50.00-85.00 per large round bale

Wheat straw - 4.00-7.00 per small square bale

Please Note: The above volumes (tonnage, acres, and bales) listed on this USDA LPGMN report are for confirmed trades only, it does not include estimated volume (tonnage) for bids or offers to the trade.

The current hay directory can be found at:

<https://apps.mda.mo.gov/HayDirectory>.

List your hay for sale at:

<https://agmarketnews.mo.gov/hay-directory/hay-listing-online-form#no-back>

## MISSOURI WEEKLY SHEEP/GOAT AUCTION SUMMARY

9/30/22

Receipts: 1044 Week Ago: 1657 Last Year: 921

All prices CWT unless otherwise noted.

**SHEEP:** Feeder lambs hair Small and Medium 1-2 pkg 38 lbs 300.00; 45-55 lbs 232.50-260.00. Slaughter lambs Choice and Prime 1-3 woolled and shorn pkg 68 lbs 161.00. Choice 1-3 woolled and shorn 75-80 lbs 127.50-139.00. Good 1-2 woolled and shorn 95-115 lbs 85.00-100.00. Choice and Prime 1-3 hair 50-60 lbs 225.00-255.00; 60-70 lbs 205.00-238.00; 70-90 lbs 172.50-185.00. Choice 1-3 hair 60-80 lbs 140.00-200.00; pkg 92 lbs 110.00. Good 1-2 hair pkg 56 lbs 144.00; 75-125 lbs 92.00-115.00. Slaughter ewes Utility and Good 1-3 120-135 lbs 85.00-90.00. Good 2-3 hair 95-120 lbs 134.00-162.00. Utility and Good 1-3 hair 100-165 lbs 92.50-120.00. Cull and Utility 1-2 hair 100-145 lbs 75.00. Bucks 1-2 hair pkg 78 lbs 122.00; pkg 120 lbs 94.00.

**GOATS:** Feeder kids Selection 1 35-50 lbs 280.00-302.50. Selection 2 30-50 lbs 202.50-260.00, pygmies pkg 40 lbs 200.00. Selection 3 35-50 lbs 150.00-187.500, pygmies 150.00-180.00. Wether kids Selection 1 lot 40 lbs 297.50. Slaughter kids Selection 1 50-70 lbs 300.00-340.00, fancy 360.00. Selection 2 50-80 lbs 220.00-282.50. Selection 3 pkg 53 lbs 150.00. Slaughter nannies/does Selection 1-2 80-125 lbs 115.00-185.00. Slaughter bucks/billies pkg 135 lbs 255.00. Wethers Selection 1-2 pkg 80 lbs 310.00. Wether kids Selection 2 pkg 51 lbs 217.00. Replacement nannies/does Selection 1-2 1-2 yrs pkg 87 lbs open 157.50.

Explanatory Notes: Stage - Represents estimated lambing/kidding period (Open, Exposed, Bred, Fall = Sep-Nov, Win = Dec-Feb, Spr = Mar-May, Sum=Jun-Aug)

## NATIONAL DIRECT DELIVERED FEEDER PIG REPORT

09/30/22 Receipts: 60,274 Week ago: 73,480 Year Ago: 108,102

Early weaned pigs 2.00 per head lower. All feeder pigs 1.00 per head lower.

Early weaned pigs 10-12 lbs. basis: Formula 22,945 head 37.74-54.61, weighted average 45.24. Cash 27,650 head 20.00-40.00, weighted average 33.92

Feeder pigs 40 pounds basis: Cash 9,679 head 35.00-65.00, weighted average 53.31

## NATIONAL DAILY DIRECT PRIOR DAY HOG REPORTS FOR 09/30/22

**BARROWS AND GILTS (Carcass Basis):** 5,763 head

Base Carcass Price, 84.00-102.00, weighted average 88.76

**SOWS (Live Basis):** 6,419 head

300-500 lbs. 31.00-81.55

Over 500 lbs. 64.81-81.00

## MISSOURI WEEKLY DIRECT SLAUGHTER CATTLE REPORT 09/30/22

Weekly Receipts: 760 Week ago: 480 Year ago: 280

Trading as of Friday morning: moderate with flat dressed sales 1.00 higher and grid dressed sales no recent test.

**LIVE STEERS & HEIFERS:** **DRESSED STEERS & HEIFERS:**  
2loads 145.00 4 loads flat Wed 228.00

**GRADE AND WEIGHT (Grid):** no15 loads mostly Wed 238.00

Click here for the current [National Crop Progress](#)

Click here for the current [Missouri Crop Progress](#)