

Weekly Market Summary

Published by:
Missouri Department of Agriculture
Ag Business Development Division
Market News Program



Chris Chinn, Director
 Jill Wood, Division Director
 Tony Hancock, Editor
<http://www.ams.usda.gov/marketnews.htm>
<http://www.ams.usda.gov/marketnews.htm>

Michael L. Parson, Governor

Volume XLII, Number 41 ♦ P.O. Box 630, Jefferson City, MO 65102 ♦ (573) 751-4211 ♦ Monday, October 17, 2022

MISSOURI WEEKLY FEEDER CATTLE WEIGHTED AVERAGE REPORT

Receipts: 21,479 Week ago: 23,951 Year ago: 16,453

Steers and Heifers Medium and Large 1—Weighted average weights and prices

STEERS: Medium and Large 1

327 lbs. 202.53	527 lbs. 193.14	718 lbs. 182.24	925 lbs. 171.31
383 lbs. 212.63	570 lbs. 192.17	776 lbs. 177.55	1060 lbs. 150.00
421 lbs. 201.78	625 lbs. 184.60	825 lbs. 176.66	
480 lbs. 200.48	667 lbs. 185.57	867 lbs. 173.92	

HEIFERS: Medium and Large 1

332 lbs. 160.58	523 lbs. 167.04	727 lbs. 170.34	920 lbs. 143.36
379 lbs. 168.16	571 lbs. 163.60	783 lbs. 161.18	963 lbs. 144.82
426 lbs. 166.56	627 lbs. 168.19	816 lbs. 158.49	
471 lbs. 167.69	679 lbs. 167.36	859 lbs. 149.95	

Missouri Steer (Heifer) Stocker Formula for 10/17/2022

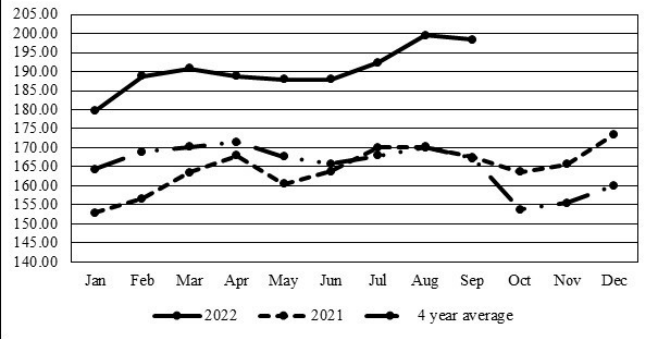
Monday's Missouri Stocker Formula consists of **3835 (3748)** head with a weighted average weight of **548.98 (529.27)** lbs. and a price value of **183.36 (160.38)**, 2.96 lower (7.30 lower) than last Monday.

This a rolling seven day calculated weighted value which combines all Feeder Steers reported by MDA/USDA Market News Service weighing from 400-649 lbs. in the Medium and Large 1 and Medium and Large 1-2 frame and muscle classifications, including all comment cattle except Brahman X. Heifer values are in parentheses.

Missouri Weekly Cattle Auction Summary 10/17/2022

Compared to last week, feeders sold steady to 5.00 lower with some instances of as much as 10.00-15.00 lower noted at a few locations. As expected in October the biggest declines are on unweaned or unvaccinated cattle which have already been selling a fairly hefty discounts to those with a verifiable health program. Despite much of the state receiving a half to an inch of rain in the last week there were some areas that missed out once again. Although the rain wasn't likely enough to really do much good it did come after the weekly data for the drought monitor was compiled, which now shows 100 percent of the state in drought conditions. If the growing season wasn't already over it for sure will be by the next report as a very hard freeze is expected the next couple of days with the highs more along the lines of what the state should be seeing for lows. Unionville Livestock Market sold a load of 916 lb. steers for 180.25 which is a very impressive ticket. Just a couple of months ago loads of eight weight steers all across the state were in the mid to upper 180's that isn't the case currently. A few loads are still getting into the lower 180's but the 170's is much more common. For the third week in a row the largest draft in the state was at Ozarks Regional Stockyards where with 229 head of 928 lb. steers, from the same farm as like size and weights have sold from the last two weeks, brought 169.00. That is 0.50 higher than the draft last week but 5.00 lower than the one from two weeks ago. Boxed beef cutouts closed a bit higher this week. Choice closed at 246.98, up 0.91 and select at 216.94, up 0.81 compared to last Friday. Negotiated sales gained a bit of ground this week, as of the Friday afternoon report volume was a not that impressive just over 68k head, although it is likely the final tally could be higher if some trade took place after the Friday afternoon report. Live sales were reported 145.00-148.00 and dressed sales mostly at 232.00. The Missouri Stocker Formula consist of 3835 head with a weighted average weight of 545.98 and a price value of 183.36, 2.96 lower than last week. The steer/heifer spread was 22.98.

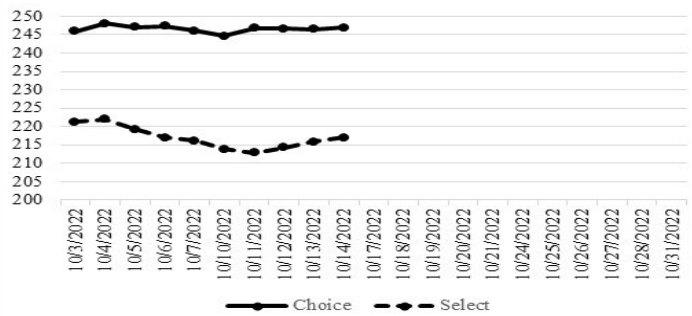
Missouri Stocker Formula - Steers



NATIONAL BOXED BEEF CUTOUT/BOXED BEEF CUTS

DATE	CHOICE	SELECT	TOTAL LOADS
10/10	244.63	213.82	150
10/11	246.75	212.85	145
10/12	246.66	214.26	128
10/13	246.53	215.86	196
10/14	246.98	216.94	104
5 Day Simple Average	246.31	214.75	

Boxed Beef Cuts October 2022



*Axis value ranges may be updated to reflect data points.

WEEKLY LIVESTOCK SLAUGHTER 10/15/22

	CATTLE	HOGS	SHEEP
Week to Date:	660,000	2,545,000	33,000
Last Week:	664,000	2,558,000	33,000
Last Year:	643,000	2,630,000	38,000

The Weekly Market Summary, as well as historical summaries, are available on our website <https://agmarketnews.mo.gov/summaries>
 Market News Hotline: 1-573-522-9244

SOUTHWEST MISSOURI WEEKLY SUMMARY

(Joplin and Springfield)

Receipts: 8801 Week ago: 8000 Year ago: 6878

Compared to last week, steers mostly steady to 5.00 lower and heifers uneven from 5.00 lower to 3.00 higher, spots up to 10.00 lower on heifers under 425 lbs. Slaughter cows steady to 4.00 lower. Slaughter bulls 2.00 to 6.00 lower.

FEEDER STEERS:
Medium and Large 1

Table with 2 columns: Weight (300-1000 lbs) and Price (195.00-151.00)

FEEDER HEIFERS:
Medium and Large 1

Table with 2 columns: Weight (300-1000 lbs) and Price (163.00-172.50)

FEEDER HOLSTEIN STEERS
Large 3

Table with 2 columns: Weight (300-900 lbs) and Price (120.00-116.50)

SLAUGHTER COWS: Breaking and Boning (70-85% lean) 59.00-78.00; high dressing 69.00-88.00; low dressing 50.00-64.50. Lean (85-90%) 53.00-64.00

SLAUGHTER BULLS: Yield Grade 1-2 1210-2245 lbs. 88.00-107.00; high dressing 103.00-116.00; low dressing 68.00-90.00

BRED COWS: Medium and Large 1-2 2-8 yrs 1090-1240 lbs 2nd and 3rd stage 1300.00-1750.00. Medium and Large 1-2 2-8 yrs 900-1625 lbs 2nd and 3rd stage 950.00-1400.00, 1st stage 725.00-1175.00, over 8 yrs 2nd and 3rd stage 725.00-1125.00 per head.

COW & CALF PAIRS: Medium and Large 1 2-8 yrs 1175-1225 lbs with baby to 300 lb calves 1900.00-2050.00. Medium and Large 1-2 2-8 yrs 940-1720 lbs baby to 300 lb calves 1150.00-1650.00 per pair.

SOUTH CENTRAL MISSOURI WEEKLY SUMMARY

(West Plains, Phillipsburg)

Receipts: 5551 Week ago: 4809 Year Ago: 3799

Compared to last week, steers 3.00 to 10.00 lower, except some yearlings early week steady to firm. Heifers 3.00 to 7.00 lower. Slaughter cows 2.00 to 3.00 lower. Slaughter bulls steady to 8.00 lower.

FEEDER STEERS:
Medium and Large 1

Table with 2 columns: Weight (300-1200 lbs) and Price (191.00-169.00)

FEEDER HEIFERS:
Medium and Large 1

Table with 2 columns: Weight (350-1000 lbs) and Price (162.00-138.00)

SLAUGHTER COWS: Breaking and Boning (70-85% lean) 62.50-78.00; high dressing 73.50-87.00; low dressing 58.00-70.00. Lean (85-90%) 57.00-70.00

SLAUGHTER BULLS: Yield Grade 1-2 1105-2400 lbs. 85.00-102.00; high dressing 102.50-115.00; low dressing 75.00-88.50

FEEDER HOLSTEIN STEERS
Large 3

Table with 2 columns: Weight (850-900 lbs) and Price (100.00-115.00)

BRED COWS: Medium and Large 1-2 2-8 yrs 1010-1505 lbs 1st to 3rd stage 950.00-1300.00 per head. Medium and Large 2 2-8 yrs 895-1325 lbs 1st to 3rd stage 650.00-925.00; over 8 yrs 952-1039 lbs 1st to 3rd stage 775.00-825.00 per head

BRED HEIFERS: Medium and Large 1-2 yearlings 785-934 lbs 1st to 3rd stage 850.00-1000.00 per head

COW & CALF PAIRS: Medium and Large 1-2 5 pairs 2-8 yrs 1311 lbs with 150-300 lb calves 1425.00 per pair. Medium and Large 2 2-8 yrs 1120-1177 lbs with 150-300 lb calves 1000.00-1300.00 per pair

WEST CENTRAL MISSOURI WEEKLY SUMMARY

(Kingsville, Windsor, Butler)

Receipts: 5020 Week ago: 5396 Year ago: 3473

Compared to last week, steer and heifer calves steady to 6.00 lower and yearlings steady to 3.00 lower. Slaughter cows steady.

FEEDER STEERS:
Medium and Large 1

Table with 2 columns: Weight (300-850 lbs) and Price (199.00-164.50)

FEEDER HEIFERS:
Medium and Large 1

Table with 2 columns: Weight (350-850 lbs) and Price (165.00-135.00)

SLAUGHTER BULLS: Yield Grade 1-2 1440-2365 lbs 88.00-109.50; high dressing 107.00-123.00; low dressing 82.00-96.00

SLAUGHTER COWS: Breaking and Boning (70-85% lean) 60.00-78.00, high dressing 68.00-89.50. Lean (85-90%) 51.50-67.00

BRED COWS: Medium and Large 1-2 2-8 yrs 1030-1145 lbs 2nd to 3rd stage 1035.00-1200.00; 5-8 yrs 1091-1428 lbs 1st to 3rd stage 810.00-915.00 per head

COW & CALF PAIRS: Medium and Large 1-2 2-8 yrs 985-1425 lbs with 150-300 lb calves 1210.00-1460.00 per pair

NORTHEAST MISSOURI WEEKLY SUMMARY

(Bowling Green, Kingdom City, Palmyra)

Receipts: 3872 Week ago: 4329 Year ago: 2487

Compared to last week, steers under 650 lbs 5.00-10.00 lower, over steady to 4.00 lower. Heifers sold mostly steady with a few light weights selling with a higher undertone. Slaughter cows sold steady to 4.00 lower.

FEEDER STEERS:
Medium and Large 1

Table with 2 columns: Weight (400-900 lbs) and Price (203.00-175.00)

FEEDER HEIFERS:
Medium and Large 1

Table with 2 columns: Weight (400-900 lbs) and Price (180.00-152.50)

SLAUGHTER BULLS: Yield Grade 1-2 1300-2230 lbs 102.00-112.00; high dressing 115.00-126.00, low dressing 91.00-100.00

SLAUGHTER COWS: Breaking and Boning, (70-85% lean) 71.00-83.50; high dressing 85.00-94.00; low dressing 61.00-75.00. Lean (85-90%) 67.00-77.50

SLAUGHTER STEERS:
few Choice 2-3 148.00

BRED COWS: Medium and Large 1 Scarce

SLAUGHTER HEIFERS:
Few Choice 2-3 147.50-149.00

COW & CALF PAIRS: Medium and Large 1 Scarce

NORTH CENTRAL MISSOURI WEEKLY SUMMARY

(Macon, Unionville, Green City, New Cambria)

Receipts: 739 Week ago: 4089 Year ago: 1609

Compared to the recent sales, few comparisons, some similar steers unevenly steady and heifers firm to 4.00 higher. Slaughter cows weak to 5.00 lower.

*Some sale barns on a bi-weekly schedule and may not have a sale each week.

FEEDER STEERS:
Medium and Large 1

Table with 2 columns: Weight (450-600 lbs) and Price (211.00-180.25)

FEEDER HEIFERS:
Medium and Large 1

Table with 2 columns: Weight (400-600 lbs) and Price (173.00-167.50)

SLAUGHTER BULLS: Yield Grade 1-2 few 1690-1820 lbs 95.00-100.00

SLAUGHTER COWS: Breaking and Boning, (70-85% lean) 69.00-82.00; low dressing 66.00-67.00. Lean (85-90%) 59.00-70.00

BRED COWS: Scarce

COW & CALF PAIRS: Scarce

SOUTHEAST MISSOURI WEEKLY SUMMARY

(Jackson and Farmington)

Receipts: 1583 Week ago: 2182 Year ago: 1191
 Compared to last week, steers and heifers 1.00 to 5.00 lower, except some 600-700 lb steers 3.00 to 5.00 higher. Slaughter cows 1.00 to 3.00 lower. Slaughter bulls 1.00 to 2.00 lower.

FEEDER STEERS:
 Medium and Large 1

300-400 lbs. 177.00-195.00
 400-500 lbs. 167.00-190.00
 500-600 lbs. 160.00-185.00
 600-700 lbs. 150.00-174.00
 Pkg 830 lbs. 138.00
 Pkg 930 lbs. 141.00

FEEDER HEIFERS:
 Medium and Large 1

300-400 lbs. 140.00-170.00
 400-500 lbs. 140.00-167.00
 500-600 lbs. 145.00-165.00
 600-700 lbs. 132.00-156.00
 700-750 lbs. 137.00-150.00
 800-850 lbs. 130.00-135.00

SLAUGHTER BULLS: Yield
 Grade 1-2 930-2110 lbs. 79.50-100.50, high dressing 104.00-119.00

SLAUGHTER COWS: Breaking and Boning (75-85% lean) 55.00-73.50; high dressing 70.00-82.00. Lean (85-90% lean) 48.00-64.00

BRED COWS: Medium and Large 2 2-8 yrs 1005-1500 lbs 2nd to 3rd stage 800.00-1125.00, 1st stage 650.00-800.00 per head

COW & CALF PAIRS: Medium and Large 2 2-8 yrs 1000-1300 lbs with baby to 300 lb calves 1000.00-1250.00; 1100-1300 lb with over 300 lb calves 1335.00-1725.00 per pair

EAST CENTRAL MISSOURI WEEKLY SUMMARY

(Cuba, Vienna)

Receipts: 1612 Week ago: 1657 Year ago: 1673
 Compared to last week, steers and heifers 5.00 to 15.00 lower, except yearlings over 600 lbs near steady. Slaughter cows 4.00 to 5.00 lower.

FEEDER STEERS:
 Medium and Large 1

400-500 lbs. 185.00-202.00
 500-600 lbs. 177.00-184.50
 800-850 lbs. 163.50-170.50

FEEDER HEIFERS:
 Medium and Large 1

11 hd 382 lbs. 172.00
 400-500 lbs. 156.00-173.00
 500-600 lbs. 145.00-160.00
 Pkg 660 lbs. 152.00
 Pkg 861 lbs. 143.50

SLAUGHTER BULLS: Yield
 Grade 1-2 1355-2355 lbs 92.00-108.00; high dressing 104.00-115.00; low dressing 81.00-94.00

SLAUGHTER COWS: Breaking and Boning, (70-85% lean) 67.00-72.50; high dressing 72.00-78.50; low dressing 60.00-64.75. Lean (85-90%) 56.00-65.00

BRED COWS: Medium and Large 1 2-4 yrs 1125 lbs 1st stage 1025.00 per head. Medium and Large 1-2 2-8 yrs 1022-1238 lbs 2nd to 3rd stage 885.00-1225.00 per head

COW & CALF PAIRS: Scarce

NORTHWEST MISSOURI WEEKLY SUMMARY

(Tina)

Receipts: 1002 Two weeks ago: 1941
 Compared to two weeks ago, steers uneven from 5.00 lower to sharply higher. Heifers steady to 4.00 lower. Slaughter cows 8.00 to 10.00 lower.

FEEDER STEERS:
 Medium and Large 1

400-500 lbs. 201.00-220.00
 500-600 lbs. 193.00-205.00
 600-700 lbs. 181.00-190.50
 700-800 lbs. 177.25-189.50
 34 hd 814 lbs. 178.25

FEEDER HEIFERS:
 Medium and Large 1

400-450 lbs. 179.00-192.00
 500-550 lbs. 174.50-184.00
 600-650 lbs. 172.00-173.00
 Pkg 716 lbs. 157.75

SLAUGHTER BULLS: Yield
 Grade 1-2 1030-2125 lbs couple 88.50; high dressing 93.50-98.50

SLAUGHTER COWS: Breaking and Boning, (70-85% lean) 63.50-75.00; high dressing 72.50-77.75. Lean (85-90%) 50.00-58.00

BRED COWS: Medium and Large 2 2-8 yrs 1170-1230 lbs 2nd to 3rd stage 875.00-1000.00 per head

COW & CALF PAIRS: Medium and Large 1-2

AFTERNOON NATIONAL SLAUGHTER

CATTLE REVIEW 10/14/22

So far for Friday in Nebraska and Western Cornbelt negotiated cash trading has been limited on light demand. Not enough purchases for a full market trend. The last reported in these regions was on Thursday with live and dressed purchases at 148.00 and at 232.00, respectively. In the Southern Plains negotiated cash trading has been at a standstill. The last reported market was on Thursday with live purchases at 145.00.

Negotiated Cash Sales:				
Confirmed:	9,879	Week Ago:	5,927	Year Ago: 1,585
Week to date:	68,278	Week Ago:	94,564	Year Ago: 95,249

<u>Live Basis</u>	<u>Steers</u>	<u>Heifers</u>
Over 80% Choice	147.00 - 150.00 avg 148.22	147.00 -148.00 avg 147.92
65-80% Choice	-	-
35-65% Choice	-	-
0-35% Choice	-	-
Total All Grades	147.00 - 150.00 avg 148.22	147.00 -148.00 avg 147.92
<u>Dressed Basis</u>		
Over 80% Choice	230.00 - 234.00 avg 232.16	232.00
65-80% Choice	230.00 - 232.00 avg 230.71	-
35-65% Choice	-	-
0-35% Choice	-	-
Total All Grades	230.00 - 234.00 avg 231.85	232.00

WEEKLY COMMODITY FUTURES TRENDS

Compared to last week, Live Cattle Oct 1.63 higher, others 0.28 to 0.95 lower, Lean Hogs 0.42 to 5.10 higher, Feeder Cattle 0.85 to 1.82 lower.

Daily Futures Closes

	Mon.	Tues.	Wed.	Thu.	Fri.
Cattle					
Oct	144.70	145.80	146.17	146.45	146.95
Dec	147.00	148.57	148.45	147.92	147.77
Feb	150.75	151.87	152.12	151.70	151.10
Apr	154.85	155.67	155.80	155.60	154.82
Jun	151.90	152.82	153.15	153.05	152.10
Lean Hogs					
Oct	93.75	93.02	93.10	93.42	93.37
Dec	79.60	79.52	80.70	80.60	82.25
Feb	81.00	81.05	81.87	81.72	83.42
Apr	84.70	84.90	85.55	85.40	86.95
May	89.35	89.77	90.15	89.85	91.22
Fdr Cat					
Oct	172.10	175.07	175.50	174.75	173.80
Nov	172.87	176.20	176.67	176.10	174.77
Jan	174.27	176.72	176.90	176.30	175.10
Mar	176.00	177.97	178.25	177.57	176.65
Apr	180.00	181.92	182.00	181.25	180.55
Milk					
Oct	21.92	21.79	21.85	21.89	21.77
Nov	21.40	21.13	21.26	21.16	20.41
Dec	21.12	20.72	20.72	20.42	19.70

WEEKLY COMMODITY GRAIN FUTURES TRENDS

Compared to last week, Soybeans 0.11 to 0.16 higher, Wheat 0.14 to 0.21 lower, Corn 0.03 to 0.06 higher, KC Wheat 0.08 to 0.16 lower, Soybean Meal 4.90 to 13.60 higher.

Daily Grain Futures Closes

	Mon.	Tues.	Wed.	Thu.	Fri.
Soybeans					
Nov	1374	1376 1/4	1396	1395 3/4	1383 3/4
Jan	1385 3/4	1388	1405	1405 1/2	1392 3/4
Mar	1395 1/4	1397	1412 1/4	1413 3/4	1401
May	1403 1/2	1405 1/4	1219	1421 3/4	1409
Jul	1407 3/4	1409	1421 1/4	1425 1/2	1413
Wheat					
Dec	938	901	882 1/4	892 1/4	859 3/4
Mar	951 1/2	917	899	908 1/2	877
May	956	924	907 1/4	915 1/2	885 1/2
Jul	940 1/4	911 1/4	899 1/2	906 3/4	880 3/4
Sep	933 3/4	907	897 1/2	903 1/2	881
Corn					
Dec	698 1/4	693	693	697 3/4	689 3/4
Mar	704 3/4	700 1/4	700	705	696 1/4
May	705 3/4	701 1/2	701	705 3/4	697 1/4
Jul	699	695 1/4	694 1/4	699	690 3/4
Sep	649 1/4	646 1/4	646	650	643
KC Wheat					
Dec	1024 1/4	990 3/4	970	982 1/4	952 1/4
Mar	1020 1/2	988 1/4	968	980	950 3/4
May	1016	985	966	977 1/4	949
Jul	996	969	955	964 3/4	940
Sep	983 1/2	959 1/2	949 1/4	957 3/4	935 1/2
SB Meal					
Oct	410.70	410.40	421.80	418.50	418.50
Dec	405.70	406.00	414.30	411.00	411.10
Jan	401.80	402.70	410.10	406.90	406.80
Mar	397.10	398.20	404.80	402.10	400.70
May	395.50	396.40	402.10	399.80	397.50

MISSOURI GRAIN WEEKLY TRENDS

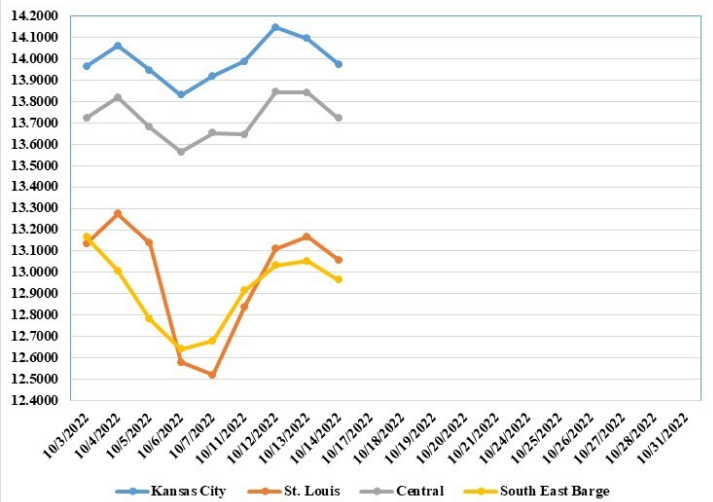
Compared to last week, Soybeans 0.02 to 0.69 higher, Wheat 0.20 lower, Corn 0.07 to 0.44 higher, Sorghum 0.07 higher.

Area	#1 Soybeans	#2 Soft Wheat	#2 Corn	#2 Grain Sorghum
Kansas City				
Friday**	13.67-14.17	9.10	7.13-7.18	6.83
Monday	Holiday			
Tuesday	13.76-14.26	9.31	7.28	6.93
Wednesday	13.96-14.31	9.12	7.28-7.33	6.93
Thursday	13.96-14.31	9.22	7.33-7.38	6.98
Friday	13.84-14.19	8.90	7.25-7.30	6.90
St. Louis				
Friday**	12.37-12.67	7.30-8.60	6.08-6.23	6.13
Monday	Holiday			
Tuesday	12.81-12.86	7.51-8.81	6.43-6.58	6.23
Wednesday	13.06-13.16	7.32-8.62	6.60-6.63	6.23
Thursday	13.16-13.18	7.42-8.72	6.65-6.68	6.28
Friday	13.06	7.10-8.40	6.52-6.60	6.20
Central				
Friday**	13.62-13.67	8.60	7.03	—
Monday	Holiday			
Tuesday	13.61-13.66	8.81	7.13	—
Wednesday	13.81-13.86	8.62	7.13	—
Thursday	13.81-13.86	8.72	7.18	—
Friday	13.69-13.74	8.40	7.10	—
S.E. MO				
Friday**	12.51-12.77	8.80	6.08-6.43	—
Monday	Holiday			
Tuesday	12.71-13.26	—	6.10-6.53	—
Wednesday	12.69-13.46	—	5.55-6.53	—
Thursday	12.78-13.46	—	5.49-6.58	—
Friday	12.66-13.34	—	5.41-6.50	—

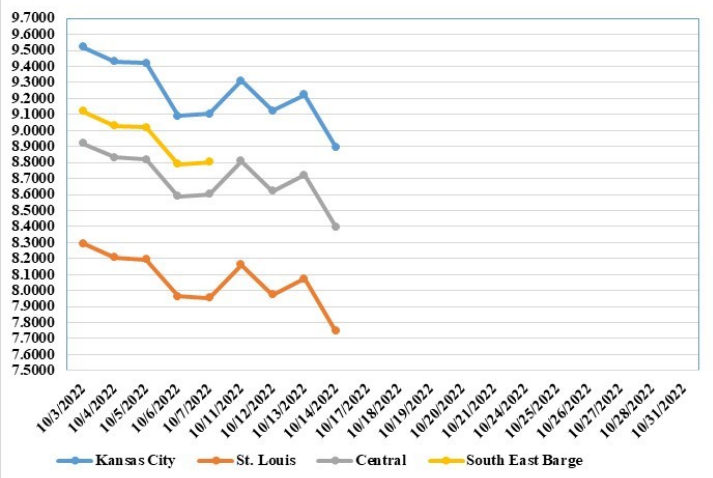
(PRICES PER BUSHEL) *NEW CROP **PREVIOUS WEEK'S PRICES
*Bids calculated using Kansas City, St. Louis, and St. Joseph bids

MONTHLY GRAIN CROP

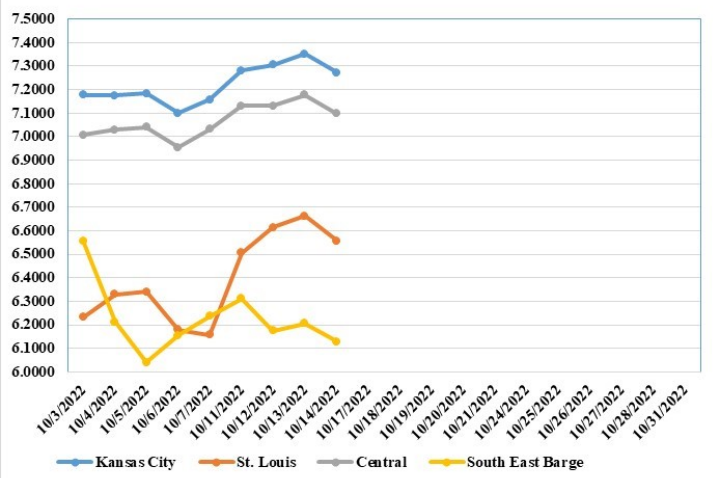
October 2022 Soybean Bids



October 2022 Wheat Bids



October 2022 Corn Bids



*Axis value ranges may be updated to reflect data points.

WHOLESALE FEEDSTUFFS PRICES 10/14/22
(DOLLARS PER TON-BULK BASIS)

Area	Soybean Hulls - Pellets	Soybean Meal 46.5-48%	Corn Gluten Pellets 21%	Wheat Middlings
Kansas City	288.33	416.10	319.33	277.50
St. Louis	n/a	n/a	300.00	252.50

WORLD AGRICULTURAL SUPPLY AND DEMAND EST.

OILSEEDS: U.S. oilseed production for 2022/23 is forecasted at 126.9 million tons, down 1.6 million from last month with lower soybean, peanut, and cottonseed production partly offset with higher forecasts for canola and sunflowerseed. Soybean production is forecast at 4.3 billion bushels, down 65 million on lower yields. Harvested area is unchanged at 86.6 million acres. The soybean yield is projected at 49.8 bushels per acre, down 0.7 bushels from the September forecast. With lower production partly offset by higher beginning stocks, supplies are reduced 31 million bushels. Soybean exports are reduced 40 million bushels to 2.05 billion with increased competition from South America. With lower exports partly offset by increased crush, ending stocks are unchanged from last month at 200 million bushels. The U.S. season-average soybean price for 2022/23 is forecast at \$14.00 per bushel, down 35 cents. Soybean meal and oil prices are unchanged at \$390.00 per short ton and 69 cents per pound respectively.

COARSE GRAINS: This month's 2022/23 U.S. corn outlook is for reduced supplies, greater feed and residual use, lower exports and corn used for ethanol, and smaller ending stocks. Corn production is forecast at 13.895 billion bushels, down 49 million on a reduction in yield to 171.9 bushels per acre. Corn supplies are forecast at 15.322 billion bushels, a decline of 172 million bushels from last month, as lower production and beginning stocks are partially offset by higher imports. Exports are lowered 125 million bushels reflecting smaller supplies and slow early-season demand. Projected feed and residual use is raised 50 million bushels based on indicated disappearance during 2021/22. Corn used for ethanol is lowered 50 million bushels. With supply falling more than use, corn ending stocks for 2022/23 are cut 47 million bushels. The season-average corn price received by producers is raised 5 cents to \$6.80 per bushel.

WHEAT: The outlook for 2022/23 U.S. wheat this month is for lower supplies, domestic use, exports, and stocks. Supplies are reduced on lower 2022/23 production based on the NASS Small Grains Summary that indicated reductions in both harvested area and yield. This lowered production by 133 million bushels to 1,650 million, leaving production only minimally higher than last year. Partially offsetting the production decline are higher projected imports, raised 10 million bushels to 120 million, all for Hard Red Spring. Annual feed and residual use is lowered 30 million bushels to 50 million, based on first quarter disappearance, as indicated in the NASS Grain Stocks report. This is the lowest first quarter total disappearance since 1983/84. Wheat exports are lowered 50 million bushels to 775 million on reduced supplies, slow pace of export sales, and continued uncompetitive U.S. export prices. This would be the lowest U.S. wheat exports since 1971/72. Projected ending stocks are lowered 34 million bushels to 576 million, which would be the lowest since 2007/08. The season-average farm price is raised \$0.20 per bushel to \$9.20 on reported NASS prices to date and expectations for futures and cash prices for the remainder of 2022/23.

MISSOURI WEEKLY HAY SUMMARY 10/13/22

The good news for the week is a beautiful four letter word: Rain. Most of the state received a half to an inch of rain over the last few days. Nothing remotely enough to do much besides settle the dust for a day or two but at least it can rain. Frost was present a few mornings over the last week and a very strong cold front is forecast next week, which should officially end the growing season. Although, it got cold enough in some areas last week that it may have already happened. Despite the little bit of moisture which came after data for the weekly drought monitor was collected, the entire state is now 100 percent showing on the drought monitor. The latest crop conditions report shows 57 percent of pastures statewide in poor to very poor ratings. Stock water supplies are 46 percent short to very short. Supply of hay and other roughages at 47 percent short to very short. Topsoil and subsoil moisture at 77 and 72 percent short to very short respectively. The supply of hay is light to moderate and demand is moderate and prices mostly steady. The Missouri Department of Agriculture has a hay directory visit <http://mda.mo.gov/abd/haydirectory/> for listings of hay <http://agebb.missouri.edu/haylst/>

Alfalfa - Supreme 250.00-300.00, small square 10.00-15.00 per bale
Alfalfa - Premium 180.00-250.00
Alfalfa - Good 150.00-180.00, small square 5.00-9.00 per bale
Alfalfa - Fair 125.00-150.00
Alfalfa/grass mix - Good/Premium small square 5.00-9.00 per bale
Mixed grass - Good/Premium 125.00-175.00
Mixed grass - Fair/Good 100.00-150.00, small square 5.00-8.00 per bale
Mixed grass - Fair 50.00-85.00 per large round bale
Wheat straw - 4.00-7.00 per small square bale

Please Note: The above volumes (tonnage, acres, and bales) listed on this USDA LPGMN report are for confirmed trades only, it does not include estimated volume (tonnage) for bids or offers to the trade.

The current hay directory can be found at:

<https://apps.mda.mo.gov/HayDirectory>.

List your hay for sale at:

<https://agmarketnews.mo.gov/hay-directory/hay-listing-online-form#no-back>

MISSOURI WEEKLY SHEEP/GOAT AUCTION SUMMARY

10/14/22

Receipts: 490 Week Ago: 880 Last Year: 1571

All prices CWT unless otherwise noted.

SHEEP: Feeder lambs hair Small and Medium 1-2 30-50 lbs 230.00-245.00. Small and Medium 2 pkg 49 lbs 180.00.

Slaughter lambs Choice and Prime 1-3 woolled 90-100 lbs 105.00-115.00. Choice 1-2 woolled pkg 75 lbs 105.00. Choice and Prime 1-3 hair 50-70 lbs 200.00-225.00; 80-90 lbs 140.00-145.00. Choice 1-2 hair 70-80 lbs 175.00-185.00; pkg 111 lbs 115.00. Good and Choice 1-2 hair 27 hd 68 lbs 165.00. Slaughter ewes Utility and Good 1-2 75-160 lbs 75.00-85.00. Utility 1-2 125-160 lbs 60.00-70.00.

Replacement ewes Small and Medium 1-2 hair yearlings pkg 90 lbs exposed 160.00. Small and Medium 1-2 hair 2-4 yrs 100-140 lbs exposed 190.00-195.00 per head; 4-6 yrs pkg 143 lbs exposed 165.00 per head. Small and Medium 2 1-2 yrs 65-70 lbs exposed 135.00-140.00 per head.

GOATS: Feeder kids Selection 2-3 35-45 lbs 205.00-215.00. Selection 3 pkg 44 lbs 180.00.

Slaughter kids Selection 1-2 50-65 lbs 250.00-275.00; pkg 89 lbs 237.50. Selection 3 pkg 72 lbs 185.00.

Explanatory Notes: Stage - Represents estimated lambing/kidding period (Open, Exposed, Bred, Fall = Sep-Nov, Win = Dec-Feb, Spr = Mar-May, Sum=Jun-Aug)

NATIONAL DIRECT DELIVERED FEEDER PIG REPORT

10/14/22 Receipts: 85,196 Week ago: 89,324 Year Ago: 96,747
Early weaned pigs 2.00 per head lower. All feeder pigs steady
Early weaned pigs 10-12 lbs. basis: Formula 37,525 head 32.85-50.38, weighted average 41.39. Cash 30,450 head 21.00-40.00, weighted average 30.34
Feeder pigs 40 pounds basis: Cash 14,556 head 40.00-55.00, weighted average 50.48. Formula 2,665 head 38.78

NATIONAL DAILY DIRECT PRIOR DAY HOG REPORTS FOR 10/14/22

BARROWS AND GILTS (Carcass Basis): 6,002 head
Base Carcass Price, 80.00-95.00, weighted average 87.84

SOWS (Live Basis) : 7,705 head
300-500 lbs. 30.00-81.00
Over 500 lbs. 61.82-79.50

MISSOURI WEEKLY DIRECT SLAUGHTER CATTLE REPORT 10/14/22

Weekly Receipts: 560 Week ago: 520 Year ago: 460
Trading as of Friday morning: light to moderate with flat dressed sales steady and grid dressed 2.00 higher.

LIVE STEERS & HEIFERS: DRESSED STEERS & HEIFERS:
No sales reported 4 loads flat Tue 230.00

GRADE AND WEIGHT (Grid): 10 loads Thu 242.00

Click here for the current [National Crop Progress](#)
Click here for the current [Missouri Crop Progress](#)