

# Weekly Market Summary

Published by:  
**Missouri Department of Agriculture**  
**Ag Business Development Division**  
**Market News Program**



Chris Chinn, Director  
 Jill Wood, Division Director  
 Tony Hancock, Editor  
<http://www.ams.usda.gov/marketnews.htm>  
[agmarketnews.mo.gov](http://agmarketnews.mo.gov)

Michael L. Parson, Governor

Volume XLII, Number 42 ♦ P.O. Box 630, Jefferson City, MO 65102 ♦ (573) 751-4211 ♦ Monday, October 24, 2022

## MISSOURI WEEKLY FEEDER CATTLE WEIGHTED AVERAGE REPORT

Receipts: 19,002 Week ago: 21,479 Year ago: 22,795

Steers and Heifers Medium and Large 1—Weighted average weights and prices

### STEERS: Medium and Large 1

336 lbs. 195.30	522 lbs. 192.67	722 lbs. 176.00	932 lbs. 172.85
381 lbs. 203.95	568 lbs. 187.65	771 lbs. 180.58	
422 lbs. 200.14	626 lbs. 180.43	822 lbs. 176.27	
474 lbs. 197.30	674 lbs. 175.36	871 lbs. 176.14	

### HEIFERS: Medium and Large 1

324 lbs. 173.91	526 lbs. 164.10	717 lbs. 165.66
376 lbs. 168.37	574 lbs. 162.04	770 lbs. 159.46
424 lbs. 171.26	636 lbs. 166.21	829 lbs. 149.60
471 lbs. 168.23	675 lbs. 164.61	868 lbs. 160.52

### Missouri Steer (Heifer) Stocker Formula for 10/24/2022

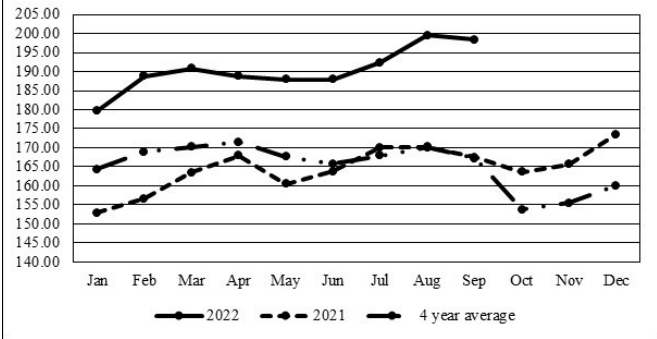
Monday's Missouri Stocker Formula consists of **3109 (3833)** head with a weighted average weight of **545.92 (539.03)** lbs. and a price value of **182.24 (158.62)**, 1.02 lower (1.76 lower) than last Monday.

This a rolling seven day calculated weighted value which combines all Feeder Steers reported by MDA/USDA Market News Service weighing from 400-649 lbs. in the Medium and Large 1 and Medium and Large 1-2 frame and muscle classifications, including all comment cattle except Brahman X. Heifer values are in parentheses.

### Missouri Weekly Cattle Auction Summary 10/24/2022

Compared to last week, feeders sold unevenly steady with about equal instances of 5.00 going both ways. The supply of feeders was moderate with exactly 50 percent of the feeder offering over 600 lbs. this week. Demand for feeders continues to depend a lot on health programs. A hard freeze came this week with record setting lows in some areas of the state bringing an end to the growing season. Generally that would be a sign that the weather was going to stabilize and help end some of the health issues, but just a few days later record highs were also set in parts of the state. The monthly cattle on feed report was released on Friday afternoon. Pre report estimates were spot on with official numbers providing no unwanted surprises. On feed numbers were 99 percent, placements were 96, and marketings were 104. Boxed beef cutouts gained some ground with choice closing at 253.71, up 7.23 and select closing at 224.36, up 7.42 compared to last week. Negotiated feedlot sales as of Friday afternoon was just over 100K head. Live sales were reported mostly from 148.00-152.00 and dressed sales mostly 236.00. The Missouri Stocker Formula consist of 3109 head with a weighted average weight of 545.92 lbs. and a price value of 182.24, down 1.02 from last week. The steer/heifer spread is 23.62. Supply included: 76% Feeder Cattle (44% Steers, 0% Dairy Steers, 48% Heifers, 8% Bulls); 19% Slaughter Cattle (1% Steers, 1% Heifers, 90% Cows, 8% Bulls); 5% Replacement Cattle (30% Stock Cows, 46% Bred Cows, 3% Bred Heifers, 20% Cow-Calf Pairs, 1% Bulls). Feeder cattle supply over 600 lbs was 50%.

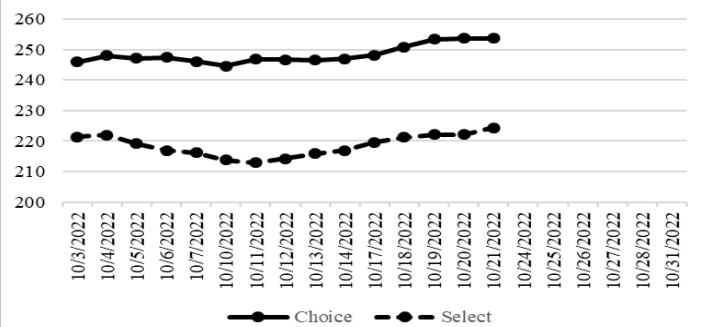
### Missouri Stocker Formula - Steers



### NATIONAL BOXED BEEF CUTOFF/BOXED BEEF CUTS

<u>DATE</u>	<u>CHOICE</u>	<u>SELECT</u>	<u>TOTAL LOADS</u>
10/17	248.14	219.61	113
10/18	250.78	221.28	135
10/19	253.39	222.19	155
10/20	253.62	222.08	178
10/21	253.71	224.36	94
<b>5 Day Simple Average</b>	251.93	221.90	

### Boxed Beef Cuts October 2022



### WEEKLY LIVESTOCK SLAUGHTER 10/22/22

	<u>CATTLE</u>	<u>HOGS</u>	<u>SHEEP</u>
Week to Date:	673,000	2,571,000	33,000
Last Week:	660,000	2,545,000	33,000
Last Year:	662,000	2,606,000	41,000

The Weekly Market Summary, as well as historical summaries, are available on our website <https://agmarketnews.mo.gov/summaries>  
 Market News Hotline: 1-573-522-9244

**SOUTHWEST MISSOURI WEEKLY SUMMARY**

(Joplin and Springfield)

Receipts: 6560 Week ago: 8801 Year ago: 7001

Compared to last week, steers under 600 lbs steady to 4.00 higher, heavier weights steady to 5.00 lower. Heifers mostly steady to 4.00 lower. Slaughter cows and bulls steady to 3.00 lower.

**FEEDER STEERS:**  
Medium and Large 1

350-400 lbs.	181.00-204.00
400-500 lbs.	175.00-197.50
500-600 lbs.	167.00-193.00
600-700 lbs.	165.00-187.00
700-800 lbs.	156.00-180.00
850-900 lbs.	150.00-154.00

**FEEDER HEIFERS:**  
Medium and Large 1

300-400 lbs.	158.00-182.00
400-500 lbs.	154.00-170.00
500-600 lbs.	150.00-169.00
600-700 lbs.	146.50-165.00
700-800 lbs.	147.00-164.00
800-850 lbs.	149.00-153.00

**FEEDER HOLSTEIN STEERS**  
Large 3

Scarce

**SLAUGHTER COWS:** Breaking and Boning (70-85% lean) 57.00-75.00, high dressing 63.00-80.00; low dressing 45.00-63.50. Lean (85-90%) 51.00-63.00

**SLAUGHTER BULLS:** Yield Grade 1-2 1210-2615 lbs. 87.50-100.50; high dressing 98.00-110.00; low dressing 73.00-85.00

**BRED COWS:** Medium and Large 1-2 2-8 yrs 960-1447 lbs 2nd to 3rd stage 735.00-1175.00; 2-4 yrs pkg 1040 lbs 2nd to 3rd stage 1250.00; 2-4 yrs pkg 850 lbs 1st to 2nd stage 935.00 per head

**COW & CALF PAIRS:** Scarce

**BRED HEIFERS:** Medium and Large 1-2 2-4 yrs 805-1240 lbs 1st to 3rd stage 700.00-935.00 per head

**SOUTH CENTRAL MISSOURI WEEKLY SUMMARY**

(West Plains, Phillipsburg)

Receipts: 4456 Week ago: 5551 Year Ago: 4221

Compared to last week, feeders sold uneven from 5.00 lower to 5.00 higher. Slaughter cows and bulls sold steady to 2.00 lower.

**FEEDER STEERS:**  
Medium and Large 1

350-400 lbs.	200.00-206.00
400-500 lbs.	188.00-215.00
500-600 lbs.	179.00-198.00
600-700 lbs.	171.00-178.00
700-750 lbs.	171.00-174.50

**FEEDER HEIFERS:**  
Medium and Large 1

350-400 lbs.	162.50-170.00
400-500 lbs.	157.00-174.00
500-600 lbs.	154.00-164.00
600-650 lbs.	149.00-162.00
700-800 lbs.	145.00-154.50

**FEEDER HOLSTEIN STEERS**  
Large 3

600-700 lbs. 107.50-123.00

**SLAUGHTER COWS:** Breaking and Boning (70-85% lean) 60.00-74.00, high dressing 69.50-80.00; low dressing 50.00-65.00. Lean (85-90%) 52.00-65.00

**SLAUGHTER BULLS:** Yield Grade 1-2 1185-2065 lbs. 85.00-102.50; high dressing 102.00-111.00; low dressing 63.00-85.00

**BRED COWS:** Medium and Large 1-2 2-8 yrs 925-1650 lbs 2nd and 3rd stage 900.00-1250.00; 1st stage 800.00-1150.00 per head. Medium and Large 2 2-8 yrs 825-1500 lbs 2nd and 3rd stage 675.00-900.00; 1st stage 600.00-975.00 per head.

**COW & CALF PAIRS:** Medium and Large 1-2 scarce

**WEST CENTRAL MISSOURI WEEKLY SUMMARY**

(Kingsville, Windsor, Butler)

Receipts: 4365 Week ago: 5020 Year ago: 4887

Compared to last week, calves sold uneven 5.00 lower to 5.00 higher, yearlings sold mostly steady. Slaughter cows sold steady to 5.00 lower.

**FEEDER STEERS:**  
Medium and Large 1

300-400 lbs.	197.00-222.50
400-500 lbs.	190.00-219.00
500-600 lbs.	179.00-202.00
600-700 lbs.	168.00-188.00
700-800 lbs.	176.00-184.00
800-900 lbs.	165.25-180.50

**FEEDER HEIFERS:**  
Medium and Large 1

350-400 lbs.	175.00-185.50
400-500 lbs.	165.00-184.00
500-600 lbs.	150.50-181.75
600-700 lbs.	155.50-182.00
700-800 lbs.	160.25-175.75
800-900 lbs.	150.00-162.75

**SLAUGHTER BULLS:** Yield Grade 1-2 1405-2000 lbs 94.00-109.00; high dressing 109.00-110.50; low dressing 84.00-94.00

**SLAUGHTER COWS:** Breaking and Boning (70-85% lean) 57.50-75.00, high dressing 67.50-86.00. Lean (85-90%) 51.00-61.50

**BRED COWS:** Medium and Large 1 -2 scarce

**COW & CALF PAIRS:** Medium and Large 1-2 scarce

**NORTHEAST MISSOURI WEEKLY SUMMARY**

(Bowling Green, Kingdom City, Palmyra)

Receipts: 3830 Week ago: 3872 Year ago: 4401

Compared to last week, feeder steers under 650 lbs sold steady to firm, with over 700 lbs selling with a higher undertone on few comparisons. Feeder heifers traded steady to firm. Slaughter cows sold 2.00-4.00 lower.

**FEEDER STEERS:**  
Medium and Large 1

400-500 lbs.	193.00-220.00
500-600 lbs.	185.00-208.00
600-700 lbs.	175.00-186.00
850-900 lbs.	176.10-177.25
57 hd 932 lbs.	172.85

**FEEDER HEIFERS:**  
Medium and Large 1

400-500 lbs.	169.00-195.00
500-600 lbs.	168.00-180.00
600-700 lbs.	168.00-175.00
70 hd 735 lbs.	170.00
Pkg 810 lbs.	154.75

**SLAUGHTER BULLS:** Yield Grade 1-2 1465-2535 lbs 99.50-110.00; low dressing 65.00-98.00

**SLAUGHTER COWS:** Breaking and Boning, (70-85% lean) 67.00-82.50; high dressing 78.00-89.50; low dressing 59.00-72.50. Lean (85-90%) 56.50-75.50

**SLAUGHTER STEERS:** Couple Choice 2-3 148.00. Choice 2-4 143.50-147.50. Select and Choice 1-3 144.00-145.50. Select 1-2 137.00-140.00

**BRED COWS:** Medium and Large 1-2 2-8 yrs 984-1400 lbs 2nd to 3rd stage 1090.00-1280.00 per head

**SLAUGHTER HEIFERS:** Choice 2-3 147.00. Choice 2-4 144.50-148.00. Select and Choice 2-3 140.00-142.00. Select 1-2 138.00-140.00.

**COW & CALF PAIRS:** Medium and Large 1-2 2-8 yrs 1100-1375 lbs with 150-300 lb calves 1400.00-1660.00; over 5 yrs 1050-1300 lbs with 150-300 lb calves 1130.00-1400.00 per pair

**NORTH CENTRAL MISSOURI WEEKLY SUMMARY**

(Macon, Unionville, Green City, New Cambria)

Receipts: 2630 Week ago: 739 Year ago: 3074

Compared to two weeks ago, feeders sold steady to 6.00 higher, although some heavy weight heifers sold 2.00-6.00 lower late week. Slaughter cows sold with lower undertones.

\*Some sale barns on a bi-weekly schedule and may not have a sale each week.

**FEEDER STEERS:**  
Medium and Large 1

400-500 lbs.	191.00-220.00
500-600 lbs.	192.50-210.00
600-700 lbs.	185.00-195.00
700-800 lbs.	180.00-190.00
850-900 lbs.	166.50-184.35

**FEEDER HEIFERS:**  
Medium and Large 1

400-500 lbs.	180.00-198.50
500-600 lbs.	168.00-180.00
600-700 lbs.	171.00-183.50
700-800 lbs.	165.00-177.00

**SLAUGHTER BULLS:** Yield Grade 1-2 few 1760-2000 lbs 87.50, low dressing 92.50-99.50

**SLAUGHTER COWS:** Breaking and Boning, (70-85% lean) 71.00-83.00; high dressing 86.00-88.50. Lean (85-90%) 61.50-69.50

**BRED COWS:** Scarce

**COW & CALF PAIRS:** Scarce

**SOUTHEAST MISSOURI WEEKLY SUMMARY**

(Jackson and Farmington)

Receipts: 2473 Week ago: 1583 Year ago: 1881  
 Compared to last week, steers and heifers uneven from 3.00 lower to 1.00 higher. Slaughter cows 3.00 lower. Slaughter bulls 1.00 to 2.00 lower.

**FEEDER STEERS:**  
 Medium and Large 1

300-400 lbs. 170.00-200.00  
 400-500 lbs. 167.50-199.00  
 500-600 lbs. 160.00-189.00  
 600-700 lbs. 148.00-176.00  
 700-800 lbs. 164.00-174.00  
 800-850 lbs. 136.00-163.00

**FEEDER HEIFERS:**  
 Medium and Large 1

300-400 lbs. 140.00-160.00  
 400-500 lbs. 135.00-165.00  
 500-600 lbs. 130.00-165.00  
 600-700 lbs. 134.50-167.00  
 700-800 lbs. 130.00-153.00  
 800-850 lbs. 140.00-141.00

**SLAUGHTER BULLS:** Yield Grade 1-2 1105-2355 lbs. 80.00-97.00; high dressing couple 98.00-100.00; low dressing 60.00-75.00

**SLAUGHTER COWS:** Breaking and Boning (75-85% lean) 55.00-70.00; high dressing 69.00-81.50. Lean (85-90% lean) 43.00-59.00

**BRED COWS:** Medium and Large 2 2-8 yrs 955-1560 lbs 2nd to 3rd stage 750.00-1275.00, 1st stage 635.00-875.00 per head

**COW & CALF PAIRS:** Medium and Large 2 2-8 yrs 1000-1220 lbs with baby to 300 lb calves 975.00-1075.00 per head

**EAST CENTRAL MISSOURI WEEKLY SUMMARY**

(Cuba, Vienna)

Receipts: 672 Week ago: 1612 Year ago: 1915  
 Too few feeders for a market trend. Slaughter cows steady.

**FEEDER STEERS:**  
 Medium and Large 1

550-600 lbs. 174.00-181.00  
 12 hd 710 lbs. 178.00

**FEEDER HEIFERS:**  
 Medium and Large 1

500-600 lbs. 150.75-158.25  
 11 hd 695 lbs. 151.00

**SLAUGHTER BULLS:** Yield Grade 1-2 1505-1890 lbs couple 93.00-94.00; high dressing ind 109.00; low dressing 75.00-85.00

**SLAUGHTER COWS:** Breaking and Boning, (70-85% lean) 67.00-72.50; high dressing 73.00-78.00; low dressing 62.00-66.00. Lean (85-90%) 56.50-64.50

**BRED COWS:** Medium and Large 1-2 2-8 yrs 895-1290 lbs 2nd to 3rd stage 1000.00-1525.00; over 5 yrs 1080-1375 lbs 2nd stage 860.00-1000.00 per head

**COW & CALF PAIRS:** Medium and Large 1-2 2-8 yrs 875-1130 lbs with 150-300 lb calves 1600.00-1800.00 per pair

**NORTHWEST MISSOURI WEEKLY SUMMARY**

(Tina) (week ending 10/15/22)

Receipts: 1002 Two weeks ago: 1941  
 Compared to two weeks ago, steers uneven from 5.00 lower to sharply higher. Heifers steady to 4.00 lower. Slaughter cows 8.00 to 10.00 lower.

**FEEDER STEERS:**  
 Medium and Large 1

400-500 lbs. 201.00-220.00  
 500-600 lbs. 193.00-205.00  
 600-700 lbs. 181.00-190.50  
 700-800 lbs. 177.25-189.50  
 34 hd 814 lbs. 178.25

**FEEDER HEIFERS:**  
 Medium and Large 1

400-450 lbs. 179.00-192.00  
 500-550 lbs. 174.50-184.00  
 600-650 lbs. 172.00-173.00  
 Pkg 716 lbs. 157.75

**SLAUGHTER BULLS:** Yield Grade 1-2 1030-2125 lbs couple 88.50; high dressing 93.50-98.50

**SLAUGHTER COWS:** Breaking and Boning, (70-85% lean) 63.50-75.00; high dressing 72.50-77.75. Lean (85-90%) 50.00-58.00

**BRED COWS:** Medium and Large 2

**COW & CALF PAIRS:** Medium and Large 1-2

**AFTERNOON NATIONAL SLAUGHTER CATTLE REVIEW 10/21/22**

So far for Friday negotiated cash trading has been mostly inactive on very light demand in the Southern Plains, Nebraska and Western Cornbelt. Not enough purchases in any region for a market trend. Thursday was the last reported market in these regions. In the Southern Plains live purchases traded at 148.00. In Nebraska live and dressed purchases traded from 151.00-152.00 and at 236.00, respectively. In the Western Cornbelt live and dressed purchases traded from 150.00-152.00 and at 236.00, respectively.

Negotiated Cash Sales:					
Confirmed:	1,609	Week Ago:	9,879	Year Ago:	1,298
Week to date:	100,579	Week Ago:	68,242	Year Ago:	70,243

Live Basis	Steers	Heifers
Over 80% Choice	-	152.00-152.00 avg 152.00
65-80% Choice	146.00-146.00 avg 146.00	-
35-65% Choice	-	-
0-35% Choice	-	-
Total All Grades	146.00-146.00 avg 146.00	152.00-152.00 avg 152.00
Dressed Basis		
Over 80% Choice	236.00-236.00 avg 236.00	236.00-236.00 avg 236.00
65-80% Choice	-	-
35-65% Choice	-	-
0-35% Choice	-	-
Total All Grades	236.00-236.00 avg 236.00	236.00-236.00 avg 236.00

**WEEKLY COMMODITY FUTURES TRENDS**

Compared to last week, Live Cattle 2.17 to 4.65 higher, Lean Hogs 6.68 to 7.10 higher, Feeder Cattle 1.47 to 5.77 higher.

Daily Futures Closes

	Mon.	Tues.	Wed.	Thu.	Fri.
Cattle					
Oct	147.87	148.47	149.35	149.77	150.47
Dec	149.20	149.77	151.35	151.67	152.42
Feb	152.20	152.77	154.25	154.85	155.52
Apr	155.52	156.12	157.30	157.57	158.25
Jun	152.65	153.25	153.97	153.65	154.27
Lean Hogs					
Dec	84.95	86.47	87.37	87.02	89.12
Feb	85.97	87.80	89.00	89.10	90.52
Apr	89.60	91.75	92.75	93.12	93.85
May	93.90	95.97	96.82	97.27	97.90
Jun	100.17	102.15	103.10	103.55	103.77
Fdr Cat					
Oct	174.75	174.82	175.22	175.57	175.27
Nov	176.40	177.82	178.07	177.55	178.35
Jan	177.25	179.20	180.07	179.25	180.37
Mar	178.95	180.92	182.32	181.45	182.25
Apr	183.00	184.90	186.40	185.65	186.32
Milk					
Oct	21.76	21.74	21.75	21.83	21.82
Nov	20.56	20.70	21.30	21.29	21.14
Dec	19.85	19.71	20.01	19.85	19.51

**WEEKLY COMMODITY GRAIN FUTURES TRENDS**

Compared to last week, Soybeans 0.10 to 0.13 higher, Wheat unch to 0.08 lower, Corn 0.05 to 0.07 lower, KC Wheat nearby 0.03 to 0.04 lower, distant unch to 0.04 higher, Soybean Meal 0.60 to 5.20 lower, except May 0.10 higher.

Daily Grain Futures Closes

	Mon.	Tues.	Wed.	Thu.	Fri.
<b>Soybeans</b>					
Nov	1385 1/4	1372	1372 1/2	1391 1/2	1395 1/2
Jan	1392 3/4	1382	1382 3/4	1400	1404 1/2
Mar	1400	1390	1391 3/4	1407 3/4	1411 3/4
May	1407	1397 1/2	1399 3/4	1414 1/2	1419
Jul	1410	1400 3/4	1403 1/4	1417 1/4	1422 1/2
<b>Wheat</b>					
Dec	861	849 1/2	841 1/4	849 1/4	850 3/4
Mar	878 3/4	867 3/4	859 1/2	868	869 1/2
May	887 1/2	876 3/4	868 3/4	878	879 1/2
Jul	883 1/2	874 1/2	866	877	878
Sep	883 1/2	875 3/4	867 1/4	880 1/4	881 1/4
<b>Corn</b>					
Dec	683 1/2	681	678 1/4	684	684 1/4
Mar	689 3/4	687	684 1/2	690	690 1/2
May	691	687 3/4	685	690	689 3/4
Jul	685 1/4	681 3/4	679 1/2	684 1/2	683 1/2
Sep	638	634 3/4	633 1/2	638	637
<b>KC Wheat</b>					
Dec	952	944 1/2	941 3/4	949 3/4	948 1/4
Mar	950 3/4	942 1/2	939 3/4	948	946 1/2
May	949 1/4	940 3/4	937 1/2	946 1/2	944 1/2
Jul	941 3/4	934	930 3/4	941 1/4	939 3/4
Sep	938 1/4	931 1/4	928	639 3/4	939 1/4
<b>SB Meal</b>					
Oct	411.00	401.80	401.70	413.30	417.90
Dec	405.80	397.70	396.60	406.80	410.30
Jan	398.60	392.80	391.00	400.00	401.60
Mar	394.80	390.10	388.60	396.90	397.90
May	394.50	390.40	389.20	396.90	397.60

**MISSOURI GRAIN WEEKLY TRENDS**

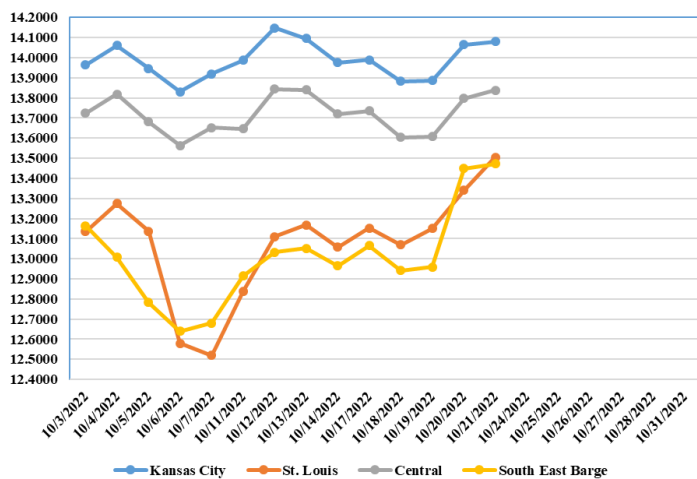
Compared to last week, Soybeans 0.02 to 0.55 higher, Wheat 0.09 lower, Corn 0.05 lower to 0.15 higher, Sorghum 0.05 lower.

Area	#1 Soybeans	#2 Soft Wheat	#2 Corn	#2 Grain Sorghum
<b>Kansas City</b>				
Friday**	13.84-14.19	8.90	7.25-7.30	6.90
Monday	13.85-14.20	8.91	7.18-7.33	6.83
Tuesday	13.82-14.07	8.80	7.16-7.31	6.81
Wednesday	13.83-14.08	8.71	7.13-7.28	6.78
Thursday	14.01-14.16	8.79	7.19-7.34	6.84
Friday	14.00-14.20	8.80	7.19-7.34	6.84
<b>St. Louis</b>				
Friday**	13.06	7.10-8.40	6.52-6.60	6.20
Monday	13.10-13.20	7.11-8.41	6.51-6.53	6.13
Tuesday	13.07	7.00-8.30	6.49-6.59	6.11
Wednesday	13.08-13.23	6.91-8.21	6.56-6.60	6.08
Thursday	13.26-13.41	6.99-8.29	6.64-6.66	6.14
Friday	13.40-13.60	7.00-8.30	6.64-6.74	6.14
<b>Central</b>				
Friday**	13.69-13.74	8.40	7.10	—
Monday	13.70-13.75	8.41	7.03	—
Tuesday	13.57-13.62	8.30	7.01	—
Wednesday	13.58-13.63	8.21	6.98	—
Thursday	13.76-14.26	8.29	7.04	—
Friday	13.80-13.85	8.30	7.04	—
<b>S.E. MO</b>				
Friday**	12.66-13.34	—	5.41-6.50	—
Monday	12.60-13.35	—	5.34-6.48	—
Tuesday	12.36-13.22	—	5.25-6.53	—
Wednesday	12.27-13.28	—	5.33-6.78	—
Thursday	13.41-13.51	—	5.39-7.04	—
Friday	13.45-13.50	—	5.39-7.09	—

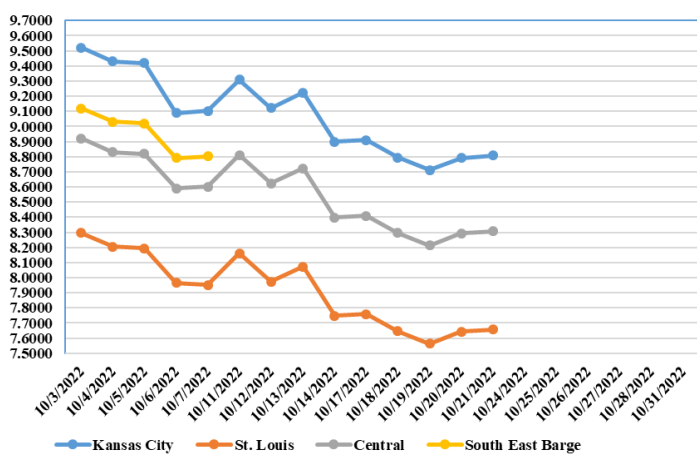
(PRICES PER BUSHEL) \*NEW CROP \*\*PREVIOUS WEEK'S PRICES  
\*Bids calculated using Kansas City, St. Louis, and St. Joseph bids

**MONTHLY GRAIN CROP**

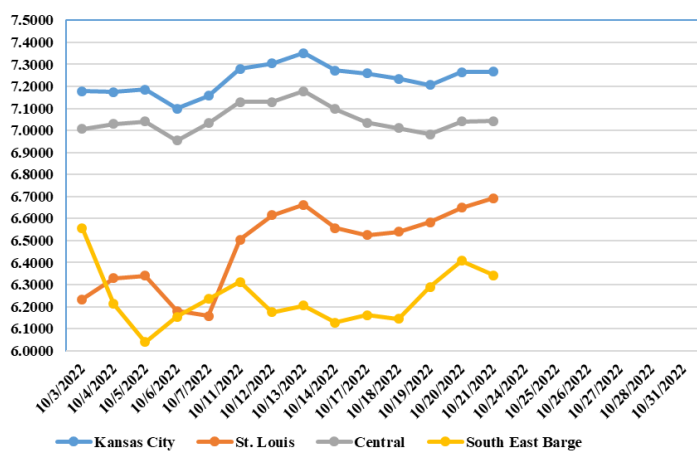
October 2022 Soybean Bids



October 2022 Wheat Bids



October 2022 Corn Bids



\*Axis value ranges may be updated to reflect data points.

**WHOLESALE FEEDSTUFFS PRICES 10/21/22**  
(DOLLARS PER TON-BULK BASIS)

Area	Soybean Hulls - Pellets	Soybean Meal 46.5-48%	Corn Gluten Pellets 21%	Wheat Middlings
Kansas City	297.50	424.40	306.50	265.00
St. Louis	n/a	n/a	290.00	227.50

**CATTLE ON FEED 10/21/22**

**United States Cattle on Feed Down 1 Percent**

Cattle and calves on feed for the slaughter market in the United States for feedlots with capacity of 1,000 or more head totaled 11.4 million head on October 1, 2022. The inventory was 1 percent below October 1, 2021. The inventory included 6.90 million steers and steer calves, down 2 percent from the previous year. This group accounted for 60 percent of the total inventory. Heifers and heifer calves accounted for 4.55 million head, up 1 percent from 2021.

Placements in feedlots during September totaled 2.08 million head, 4 percent below 2021. Net placements were 2.03 million head. During September, placements of cattle and calves weighing less than 600 pounds were 445,000 head, 600-699 pounds were 330,000 head, 700-799 pounds were 440,000 head, 800-899 pounds were 480,000 head, 900-999 pounds were 290,000 head, and 1,000 pounds and greater were 95,000 head.

Marketings of fed cattle during September totaled 1.86 million head, 4 percent above 2021.

Other disappearance totaled 53,000 head during September, 9 percent below 2021.

**LIVESTOCK SLAUGHTER 10/20/22**

**Record High Beef Production for September**

Commercial red meat production for the United States totaled 4.67 billion pounds in September, up 2 percent from the 4.58 billion pounds produced in September 2021.

Beef production, at 2.39 billion pounds, was 4 percent above the previous year. Cattle slaughter totaled 2.90 million head, up 4 percent from September 2021. The average live weight was down 1 pound from the previous year, at 1,364 pounds.

Veal production totaled 4.2 million pounds, 5 percent below September a year ago. Calf slaughter totaled 30,800 head, down 10 percent from September 2021. The average live weight was up 14 pounds from last year, at 238 pounds.

Pork production totaled 2.26 billion pounds, down slightly from the previous year. Hog slaughter totaled 10.7 million head, down 1 percent from September 2021. The average live weight was up 2 pounds from the previous year, at 285 pounds.

Lamb and mutton production, at 10.7 million pounds, was down slightly from September 2021. Sheep slaughter totaled 168,800 head, 8 percent below last year. The average live weight was 125 pounds, up 9 pounds from September a year ago.

January to September 2022 commercial red meat production was 41.5 billion pounds, down slightly from 2021. Accumulated beef production was up 2 percent from last year, veal was up 4 percent, pork was down 2 percent from last year, and lamb and mutton production was down 4 percent.

**MISSOURI WEEKLY HAY SUMMARY 10/20/22**

The growing season officially came to an end with record setting lows and a hard freeze this week. As typical, however, the mercury is expected to climb to near 80 in just a few days. Several producers in the state are already feeding hay and some have been for a bit. Drought conditions continue to worsen and in some of the driest areas there is concern about water supplies now. The supply of hay is light to moderate and demand is moderate and prices mostly steady. The Missouri Department of Agriculture has a hay directory visit <http://mda.mo.gov/abd/haydirectory/> for listings of hay <http://agebb.missouri.edu/haylst/>

- Alfalfa - Supreme 250.00-300.00, small square 10.00-15.00 per bale
- Alfalfa - Premium 180.00-250.00
- Alfalfa - Good 150.00-180.00, small square 5.00-9.00 per bale
- Alfalfa - Fair 125.00-150.00
- Alfalfa/grass mix - Good/Premium small square 5.00-9.00 per bale
- Mixed grass - Good/Premium 125.00-175.00
- Mixed grass - Fair/Good 100.00-150.00, small square 5.00-8.00 per bale
- Mixed grass - Fair 50.00-85.00 per large round bale
- Wheat straw - 4.00-7.00 per small square bale

Please Note: The above volumes (tonnage, acres, and bales) listed on this USDA LPGMN report are for confirmed trades only, it does not include estimated volume (tonnage) for bids or offers to the trade.

The current hay directory can be found at: <https://apps.mda.mo.gov/HayDirectory>. List your hay for sale at: <https://agmarketnews.mo.gov/hay-directory/hay-listing-online-form#no-back>

**MISSOURI WEEKLY SHEEP/GOAT AUCTION SUMMARY**

Receipts: 2425 Week Ago: 90 Last Year: 1707

**SHEEP:** Feeder lambs hair Small and Medium 1-2 30-50 lbs 240.00-330.00. Slaughter lambs Choice and Prime 1-3 w/s pkg 64 lbs 180.00. Choice 1-3 w/s 55-100 lbs 125.00-135.00; pkg 109 lbs 115.00. Choice and Prime 1-2 woolled 70-80 lbs 215.00-220.00; 80-90 lbs 172.0-185.00. Choice and Prime 1-2 hair 40-70 lbs 217.00-265.00; 70-80 lbs 200.00-240.00; 80-90 lbs 180.00-190.00; 90-135 lbs 135.00-185.00. Choice and Prime 1-3 hair 50-70 lbs 210.00-280.00; 70-80 lbs 177.50-232.50; 80-90 lbs 160.00-170.00. Choice 1-3 hair 50-70 lbs 162.50-240.00; 70-80 lbs 135.00-187.50; 80-90 lbs 125.00-155.00; 90-130 lbs 100.00-145.00. Good 1-2 60-70 lbs 150.00-155.00. Slaughter ewes Utility and Good 1-3 125-150 lbs 70.00. Utility and Good 2 100-200 lbs 80.00-112.00. Good 2-3 hair 110-120 lbs 130.00-150.00/hd. Utility and Good 1-3 90-195 lbs 85.00-120.00. Utility and Good 1-3 hair 85-125 lbs 100.00-130.00. Slaughter bucks 1-2 150-185 lbs 100.00-107.00. Bucks 1-2 hair 110-140 lbs 100.00-130.00. Replacement ewes Medium and Large 1-2 yearlings 50-55 lbs 162.00-260.00; 1-2 yrs pkg 123 lbs exp 140.00; 2-4 yrs 110-125 lbs exp 145.00-215.00. Small and Medium 1-2 2-4 yrs 100-115 lbs exp 160.00-180.00. Small and Medium 1-2 yearlings 70-90 lbs exp 155.00-185.00/hd; 45-85 lbs exp 150.00-175.00 per head; 1-2 yrs 95 lbs exp 180.00/hd; 2-4 yrs 115-135 lbs exp 135.00-210.00/hd; 115-140 lbs exp 155.00-290.00/hd; 4-6 yrs 130-135 lbs exp 190.00-210.00/hd; pkg 119 lbs exp 155.00/hd. Families Small and Medium 1-2 2-4 yrs 110 lbs exp with baby to 20 lb lambs 270.00-245.00 per family

**GOATS:** Feeder kids Selection 1 25-50 lbs 300.00-355.00. Selection 1-2 35 lbs 250.00-300.00. Selection 2 30-50 lbs 220.00-300.00. Selection 3 25-50 lbs 155.00-210.00. Slaughter kids Selection 1 45-80 lbs 275.00-320.00. Selection 1-2 45-85 lbs 260.00-295.00. Selection 2 50-90 lbs 215.00-275.00. Selection 3 50-75 lbs 135.00-215.00. Slaughter nannies/does 80-95 lbs 100.00-135.00; 100-150 lbs 120.00-165.00. Slaughter bucks/billies Selection 1-2 120-185 lbs 150.00-220.00. Replacement nannies/does Selection 1-2 1-2 yrs exp 92 lbs 380.00. Selection 1-2 yearlings pkg 35 lbs exp 120.00/hd; 2-4 yrs pkg 196 lbs bred 280.00/ hd; pkg 85 lbs exp 160.00/hd.

Explanatory Notes: Stage - Represents estimated lambing/kidding period (Open, Exp=exposed, Bred, Fall = Sep-Nov, Win = Dec-Feb, Spr = Mar-May, Sum=Jun-Aug; w/s = woolled and shorn; /hd= per head; All price CWT unless otherwise noted.

**MISSOURI DROUGHT MONITOR 10/20/2022**

Date	None	D0	D1	D2	D3	D4
10/18/22	0	13.60	36.00	36.12	11.73	2.55
10/11/22	0	27.14	35.64	23.84	10.83	2.55
10/19/21	74.39	24.83	0.78	0	0	0

Reflects percentage of Missouri impacted by drought. D0 Abnormally Dry; D1 Moderate Drought; D2 Severe Drought; D3 Extreme Drought; D4 Exceptional Drought

**NATIONAL DIRECT DELIVERED FEEDER PIG REPORT**

10/21/22 Receipts: 73,043 Week ago: 85,196 Year Ago: 80,002 Early weaned pigs mostly steady. All feeder pigs 1.00 per head higher. Early weaned pigs 10-12 lbs. basis: Formula 34,161 head 31.34-49.97, weighted average 42.40. Cash 29,002 head 20.00-42.50, weighted average 29.62. Feeder pigs 40 pounds basis: Cash 9,880 head 44.00-56.00, weighted average 51.38.

**NATIONAL DAILY DIRECT PRIOR DAY HOG REPORTS FOR 10/21/22**

**BARROWS AND GILTS (Carcass Basis):** 8949 head Base Carcass Price, 85.00-102.00, weighted average 94.07

**SOWS (Live Basis):** 6941 head 300-500 lbs. 30.00-77.50 Over 500 lbs. 30.00-79.00

**MISSOURI WEEKLY DIRECT SLAUGHTER CATTLE REPORT 10/21/22**

Weekly Receipts: 200 Week ago: 560 Year ago: 360 Trading as of Friday morning: light with flat dressed sales 2.00 higher and grid sales not tested.

**LIVE STEERS & HEIFERS:** No sales reported **DRESSED STEERS & HEIFERS:** 5 loads Tues 232.00

**GRADE AND WEIGHT (Grid):** No sales reported

Click here for the current [National Crop Progress](#) Click here for the current [Missouri Crop Progress](#)