

Weekly Market Summary

Published by:
Missouri Department of Agriculture
Ag Business Development Division
Market News Program



Chris Chinn, Director
 Jill Wood, Division Director
 Tony Hancock, Editor
<http://www.ams.usda.gov/marketnews.htm>
<http://www.ams.usda.gov/marketnews.htm>

Michael L. Parson, Governor

Volume XLII, Number 52 ♦ P.O. Box 630, Jefferson City, MO 65102 ♦ (573) 751-4211 ♦ Monday, January 2, 2023

MISSOURI WEEKLY FEEDER CATTLE WEIGHTED AVERAGE REPORT

Receipts: 19,877 Week ago: 30,086 Year ago: 11,729 (week ending 12/24/22)
 Steers and Heifers Medium and Large 1—Weighted average weights and prices

STEERS: Medium and Large 1

321 lbs. 237.23	524 lbs. 201.62	722 lbs. 177.82	921 lbs. 168.32
374 lbs. 221.10	569 lbs. 194.20	782 lbs. 171.67	
431 lbs. 210.78	622 lbs. 184.54	827 lbs. 175.98	
473 lbs. 208.91	668 lbs. 179.72	893 lbs. 174.50	

HEIFERS: Medium and Large 1

332 lbs. 175.62	527 lbs. 175.79	727 lbs. 162.73
373 lbs. 177.18	569 lbs. 170.91	766 lbs. 169.46
429 lbs. 175.85	623 lbs. 172.65	819 lbs. 159.20
469 lbs. 176.43	674 lbs. 175.95	852 lbs. 160.25

Missouri Steer (Heifer) Stocker Formula for 01/02/2023

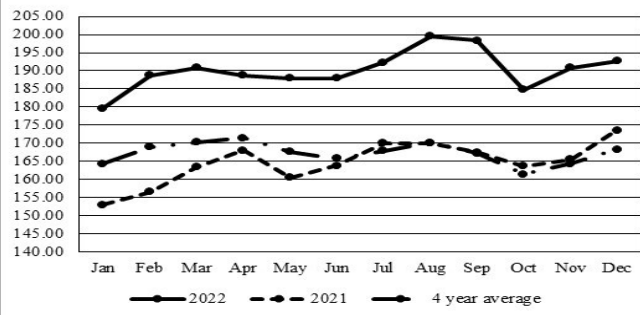
Monday's Missouri Stocker Formula contains no data as sale barns have been closed for the holidays.

This a rolling seven day calculated weighted value which combines all Feeder Steers reported by MDA/USDA Market News Service weighing from 400-649 lbs. in the Medium and Large 1 and Medium and Large 1-2 frame and muscle classifications, including all comment cattle except Brahman X. Heifer values are in parentheses.

Missouri Weekly Cattle Auction Summary 12/26/2022

Compared to the last week, feeders mostly 2.00 to 6.00 lower. The supply of feeders was light to moderate. Many reporters noted that overall quality was lower than typical. A limited amount of load lots and a few packages of better quality feeders did sale closer to steady and even firm in a few cases. No sales were held on Thursday or Friday of this week as barns had already scheduled to be dark for the holidays prior to the arrival of the extreme cold. Demand for feeders was light to moderate not a lot of places really wanted to receive orders of cattle this week especially if they couldn't get to their destination early and be processed before weather arrived. The extreme cold that showed up Wednesday night and lasting through the weekend was not a very good Christmas gift. Wind chills of 25-30 below zero made caring for livestock just downright dangerous, aside from being challenging as everyone knows when weather like this arrives nothing wants to start and everything wants to break. The monthly cattle on feed report was released Friday afternoon. Overall the report should be viewed as mostly neutral as actual numbers did fall within pre-report estimates. The placement number which is most watched and typically where any surprises arrive was however at the very top end of the estimates. Boxed beef cutouts were sharply higher for the second consecutive week. Choice closed at 271.9, up 9.12 and select closed the week at 245.47, up 10.02 compared to last Friday. Negotiated feedlot sales as of Friday afternoon was just under 33K. Live sales were reported mostly from 155.00-157.00, dressed sales mostly at 249.00. Likely more trade took place after the final 2:00 pm reporting time on Friday. After two weeks of light trade packers have to be short bought and needing cattle but feedlot managers have their heels dug in and seem unwilling to sell unless they can get some better money. The Missouri Stocker Formula consist of 3380 head with a weighted average weight of 536.63 lbs. and a price value of 190.53, down 4.48 from last week. The steer/heifer spread is 23.89.

Missouri Stocker Formula - Steers



*Graph is updated the first Monday of each month.

NATIONAL BOXED BEEF CUTOFF/BOXED BEEF CUTS

DATE	CHOICE	SELECT	TOTAL LOADS
12/26	Holiday	Holiday	
12/27	280.04	245.64	78
12/28	279.41	247.28	102
12/29	278.86	250.70	101
12/30	281.98	250.93	66
4 Day Simple Average	280.07	248.64	

Boxed Beef Cuts December 2022



*Axis value ranges may be updated to reflect data points.

WEEKLY LIVESTOCK SLAUGHTER 12/31/22

	CATTLE	HOGS	SHEEP
Week to Date:	547,000	2,186,000	26,000
Last Week:	562,000	1,782,000	30,000
Last Year:	524,000	2,154,000	31,000

The Weekly Market Summary, as well as historical summaries, are available on our website <https://agmarketnews.mo.gov/summaries>
 Market News Hotline: 1-573-522-9244

SOUTHWEST MISSOURI WEEKLY SUMMARY

(Joplin and Springfield) (week ending 12/24/22)

Receipts: 10,775 Week ago: 12,322 Year ago: 5900

Compared to last week, steers 5.00 to 8.00 lower and heifers 2.00 to 5.00 lower. Slaughter cows steady to 6.00 higher and slaughter bulls steady to 2.00 higher.

FEEDER STEERS:
Medium and Large 1

300-400 lbs.	242.00-250.00
400-500 lbs.	187.00-222.00
500-600 lbs.	182.00-201.00
600-700 lbs.	173.00-188.00
700-800 lbs.	170.25-183.00
800-850 lbs.	171.50-178.75
60 hd 916 lbs.	170.00

FEEDER HEIFERS:
Medium and Large 1

300-400 lbs.	180.00-190.00
400-500 lbs.	172.00-183.00
500-600 lbs.	165.00-175.00
600-700 lbs.	158.00-168.00
700-750 lbs.	162.00-164.00
800-900 lbs.	158.50-162.00

FEEDER HOLSTEIN STEERS
Large 3

Scarce Scarce

SLAUGHTER COWS: Breaking and Boning (70-85% lean) 55.00-76.00, high dressing 68.00-85.00; low dressing 59.00-64.50. Lean (85-90%) 45.00-63.00

SLAUGHTER BULLS: Yield Grade 1-2 1144-2345 lbs. 82.50-99.00; high dressing 96.00-106.00; low dressing 70.00-85.00

COW & CALF PAIRS: Scarce

BRED COWS: Medium and Large 1-2 2-8 yrs 930-1470 lbs 2nd to 3rd stage 800.00-1200.00; over 8 yrs 1010-1439 lbs 2nd to 3rd stage 800.00-1025.00 per head

BRED HEIFERS: Medium and Large 1-2 930-1030 lbs 1st to 3rd stage 835.00-1150.00 per head

SOUTH CENTRAL MISSOURI WEEKLY SUMMARY

(West Plains, Phillipsburg) (week ending 12/24/22)

Receipts: 2463 Week ago: 4081 Year Ago: 1683

Compared to last week, feeder calves steady to 4.00 lower, most weights not well tested. Yearling steers steady. Slaughter cows and bulls 2.00 to 3.00 higher.

FEEDER STEERS:
Medium and Large 1

Pkg 386 lbs.	222.00
400-500 lbs.	200.00-208.00
550-600 lbs.	180.00-188.00
600-700 lbs.	176.00-186.00
68 hd 927 lbs.	168.50

FEEDER HEIFERS:
Medium and Large 1

300-400 lbs.	167.00-176.00
400-500 lbs.	164.00-178.00
500-600 lbs.	157.00-164.00

FEEDER HOLSTEIN STEERS
Large 3

Scarce

SLAUGHTER COWS: Breaking and Boning (70-85% lean) 65.00-77.00, high dressing 76.00-86.00; low dressing 55.00-68.00. Lean (85-90%) 57.00-66.00

SLAUGHTER BULLS: Yield Grade 1-2 1215-2460 lbs. 90.00-104.00; high dressing 106.00-117.00; low dressing 60.00-89.00

COW & CALF PAIRS: Medium and Large 2 2-8 yrs 3 pairs 1035 lbs with 150-300 lb calves 1050.00 per pair

BRED COWS: Medium and Large 1-2 2-8 yrs 1075-1565 lbs 2nd to 3rd stage 1000.00-1350.00, 1st stage 950.00-1100.00 per head

BRED HEIFERS: Medium and Large 1-2 7 hd 875 lbs 1st to 3rd stage 900.00 per head

WEST CENTRAL MISSOURI WEEKLY SUMMARY

(Kingsville, Windsor, Butler) (week ending 12/24/22)

Receipts: 3518 Week ago: 6915 Year ago: 2329

Compared to last week, feeders mostly steady to 4.00 lower, spots 4.00 to 8.00 lower on yearlings, except some 600 lb heifers early week firm to sharply higher. Slaughter cows steady to 2.00 higher, spots 4.00 higher. Slaughter bulls 2.00 to 3.00 higher.

FEEDER STEERS:
Medium and Large 1

400-500 lbs.	200.00-230.00
500-600 lbs.	178.00-216.00
650-700 lbs.	172.50-184.00
700-750 lbs.	175.00-177.00

FEEDER HEIFERS:
Medium and Large 1

400-500 lbs.	171.00-189.50
500-600 lbs.	168.00-188.00
600-700 lbs.	168.00-186.75
700-800 lbs.	165.00-173.00

SLAUGHTER BULLS: Yield Grade 1-2 1250-2295 lbs 85.00-103.50; high dressing 98.50-114.00; low dressing 78.00-90.50

SLAUGHTER COWS: Breaking and Boning (70-85% lean) 60.00-75.50, high dressing 70.00-79.00; low dressing 50.00-61.50. Lean (85-90%) 53.00-66.50

BRED COWS: Scarce

COW & CALF PAIRS: Scarce

NORTHEAST MISSOURI WEEKLY SUMMARY

(Bowling Green, Kingdom City, Palmyra) (week ending 12/24/22)

Receipts: 2277 Week ago: 5099 Year ago: 1933

Compared to last week, light holiday trade with few good comparisons, under 500 lbs lower undertone, steers over 500 lbs steady and heifers over 500 lbs steady to firm. Slaughter cows steady.

FEEDER STEERS:
Medium and Large 1

300-350 lbs.	222.00-227.00
400-500 lbs.	207.00-222.00
500-600 lbs.	193.50-211.00
600-650 lbs.	184.50-187.50

FEEDER HEIFERS:
Medium and Large 1

450-500 lbs.	180.00-185.00
500-600 lbs.	175.00-180.00
600-650 lbs.	175.00-180.00

SLAUGHTER BULLS: Yield Grade 1-2 1435-2405 lbs 91.50-101.50; high dressing 102.00-106.00; low dressing 77.50-92.00

SLAUGHTER COWS: Breaking and Boning (70-85% lean) 66.00-80.50; high dressing 73.50-88.50; low dressing 58.00-71.50. Lean (85-90%) 58.00-69.00

SLAUGHTER STEERS: Choice 3 -4 150.50-154.50, heavy weight 141.00. Select 2-3 139.00.

BRED COWS: Scarce

SLAUGHTER HEIFERS: choice 3-4 heavy weight 135.00.

COW/CALF PAIRS: Scarce

NORTH CENTRAL MISSOURI WEEKLY SUMMARY

(Macon, Unionville, Green City, New Cambria)

(week ending 12/24/22)

Receipts: 1304 Week ago: 5105 Year ago: 1331

Compared to last week, steers 400-500 lbs and heifers 400-600 lbs lower undertone on a light test, heavier weights mostly steady, spots firm.

FEEDER STEERS:
Medium and Large 1

400-500 lbs.	207.50-219.00
500-600 lbs.	200.00-217.50
650-700 lbs.	182.00-185.75
63 hd 893 lbs.	174.50

FEEDER HEIFERS:
Medium and Large 1

550-600 lbs.	179.00
600-700 lbs.	178.50-182.10

SLAUGHTER BULLS: Yield Grade 1-2 1250-2105 lbs 94.00-100.00; low dressing 81.00-92.50

SLAUGHTER COWS: Breaking and Boning (70-85% lean) 66.50-73.50; high dressing 78.00-84.00; low dressing 58.50-68.00. Lean (85-90%) 61.00-68.00

BRED COWS: Scarce

COW & CALF PAIRS: Scarce

SOUTHEAST MISSOURI WEEKLY SUMMARY

(Jackson and Farmington) (week ending 12/24/22)

Receipts: 501 Week ago: 1487 Year ago: 222

Compared to last week, steers and heifers steady to 6.00 lower on a light test. Slaughter cows and bulls steady.

FEEDER STEERS:
Medium and Large 1

300-400 lbs. 180.00-200.00
400-500 lbs. 180.00-200.00
500-600 lbs. 168.00-195.00
600-700 lbs. 165.00-175.00
700-800 lbs. 155.00-167.00
800-900 lbs.

FEEDER HEIFERS:
Medium and Large 1

300-400 lbs. 152.00-174.00
400-500 lbs. 140.00-165.00
500-600 lbs. 146.00-165.00
600-700 lbs. 146.00-148.00
700-800 lbs. 139.00-150.00

SLAUGHTER BULLS: Yield
Grade 1-2 1315-1825 lbs. 75.00-90.00

SLAUGHTER COWS: Breaking and Boning (75-85% lean) 50.00-62.00; high dressing 62.00-75.00. Lean (85-90% lean) 40.00-50.00

BRED COWS: Medium and Large 2 2-8 yrs 955-1340 lbs 2nd to 3rd stage 710.00-825.00 per head

COW & CALF PAIRS: Medium and Large 2 couple 2-8 yrs 1050-1100 lbs with 150-300 lb calves 875.00-1125.00 per pair

EAST CENTRAL MISSOURI WEEKLY SUMMARY

(Cuba, Vienna) (week ending 12/24/22)

Receipts: 584 Week ago: 3610 Year ago:

Too few feeders for a market trend. Slaughter cows 3.00 to 4.00 high-er.

FEEDER STEERS:
Medium and Large 1

450-500 lbs. 209.50-210.00
550-600 lbs. 181.50-189.50
750-800 lbs. 159.50-167.00

FEEDER HEIFERS:
Medium and Large 1

400-500 lbs. 160.00-166.00
500-600 lbs. 157.00-165.50
Pkg 690 lbs. 150.50
Pkg 833 lbs. 143.00

SLAUGHTER BULLS: Yield
Grade 1-2 couple 1040-2445 lbs 103.00-104.00, couple high dressing 106.00-109.50, few low dressing 86.00-91.50

SLAUGHTER COWS: Breaking and Boning, (70-85% lean) 67.50-75.50; high dressing 77.00-80.50; low dressing 59.00-66.50. Lean (85-90%) 61.50-66.00

BRED COWS: Scarce

COW & CALF PAIRS: Scarce

NORTHWEST MISSOURI WEEKLY SUMMARY

(Tina)

Receipts: 943 Two weeks ago: 1975

Tina Livestock Market held their final replacement cattle special for 2022. Majority of cattle were young bred cows and bred heifers sold with good demand.

FEEDER STEERS:
Medium and Large 1

Scarce

FEEDER HEIFERS:
Medium and Large 1

Scarce

SLAUGHTER BULLS: Scarce

BRED HEIFERS: Medium and Large 1-2 2-4 yrs 1128-1150 lbs 2nd to 3rd stage 2300.00-2700.00. Medium and Large 2 2-4 yrs 906-1112 lbs 2nd to 3rd stage 1600.00-2000.00 per head

BRED COWS: Medium and Large 1 2-8 yrs 1057-1457 lbs 2nd to 3rd stage 1650.00-1950.00. Medium and Large 1-2 2-8 yrs 1057-1490 lbs 2nd to 3rd stage 1300.00-1625.00 per head

COW & CALF PAIRS: Medium and Large 1 2-8 yrs 1100-1330 lbs with baby to 150 lb calves 1900.00-2100.00. Medium and Large 1-2 2-8 yrs 875-1425 lbs with baby to 300 lb calves 1410.00-1700.00 per pair

AFTERNOON NATIONAL SLAUGHTER CATTLE REVIEW

Thus far on Friday negotiated cash trade was light to moderate on moderate demand in the Southern Plains and Nebraska. Compared to last week in the Southern Plains live purchases traded 1.00 higher at 157.00. In Nebraska compared to last week, live purchases traded 1.00-2.00 higher at 158.00 on a light test. Dressed purchases compared to last week traded 3.00 higher at 252.00. Trade was light on light to moderate demand in the Western Cornbelt. Not enough purchases for an adequate market test. The latest established live market in the Western Cornbelt was on Thursday with live purchases from 157.00-160.00. The latest established dressed market was last week from 248.00-249.00.

Negotiated Cash Sales:					
Confirmed:	22,837	Week Ago:	9,970	Year Ago:	0
Week to date:	57,542	Week Ago:	32,537	Year Ago:	82,845

Live Basis	Steers	Heifers
Over 80% Choice	157.00-158.00, avg 157.47	156.00-157.00, avg 157.61
65-80% Choice	157.00	157.00
35-65% Choice	157.00	-
0-35% Choice	-	-
Total All Grades	157.00-158.00, avg 157.15	156.00-158.00, avg 157.32
Dressed Basis		
Over 80% Choice	250.00-252.00, avg 251.48	252.00
65-80% Choice	252.00	252.00
35-65% Choice	-	-
0-35% Choice	250.00-252.00, avg 251.68	252.00
Total All Grades		

WEEKLY COMMODITY FUTURES TRENDS

Compared to last week, Live Cattle uneven with Dec 2.08 lower, others from 0.03 lower to 0.15 higher, Lean Hogs uneven from 0.12 lower to 0.62 higher, Feeder Cattle 0.30 to 0.63 lower, except Aug 0.07 higher.

Daily Futures Closes

	Mon.	Tues.	Wed.	Thu.	Fri.
Cattle					
Dec	Holiday	156.82	157.45	158.50	154.82
Feb		157.87	157.80	158.85	157.90
Apr		161.82	161.77	162.45	161.80
Jun		157.67	157.95	158.15	157.82
Aug		157.52	157.90	158.00	157.57
Lean Hogs					
Feb	Holiday	91.47	90.80	88.67	87.70
Apr		96.45	96.57	95.70	95.30
May		101.00	101.52	100.97	100.70
Jun		108.92	108.87	108.65	109.17
Jul		109.22	108.35	109.07	109.67
Fdr Cat					
Jan	Holiday	183.10	183.47	183.80	183.70
Mar		185.40	186.20	186.77	186.22
Apr		189.12	189.50	190.15	189.62
May		192.45	192.50	193.15	192.85
Aug		202.07	202.55	203.05	202.62
Milk					
Dec	Holiday	20.53	20.51	20.51	20.47
Jan		19.82	19.59	19.73	19.54
Feb		18.83	18.61	18.72	18.59

WEEKLY COMMODITY GRAIN FUTURES TRENDS

Compared to last week, Soybeans 0.35 to .40 higher, Wheat 0.16 to 0.17 higher, Corn 0.09 to 0.13 higher, KC Wheat 0.13 to 0.15 higher, Soybean Meal 11.30 to 23.20 higher.

Daily Grain Futures Closes

	Mon.	Tues.	Wed.	Thu.	Fri.
Soybeans					
Jan	Holiday	1482 1/4	1506 1/2	1508 3/4	1519 1/4
Mar		1489	1514 1/4	1516 1/4	1524
May		1495 3/4	1521 1/1	1523 1/4	1530
Jul		1499 3/4	1525	1526 3/4	1533 1/4
Aug		1477 1/4	1500 1/4	1502 3/4	1507 1/4
Wheat					
Mar	Holiday	774 1/2	785 1/2	774	792
May		781	792 3/4	781	798 3/4
Jul		784 1/4	796 1/4	785 1/4	803
Sep		790 3/4	802 1/2	792 1/2	809 1/2
Dec		802 1/2	814 1/4	804	820 1/4
Corn					
Mar	Holiday	674 3/4	682 3/4	679 1/2	678 1/2
May		673 1/4	681 1/2	679	678
Jul		666 1/4	674 3/4	672 3/4	671 3/4
Sep		622 3/4	628 3/4	629 3/4	627
Dec		607	611 3/4	612 1/2	610 3/4
KC Wheat					
Mar	Holiday	879 1/4	882 1/4	866 1/2	888
May		872	876 3/4	861 1/4	882 1/4
Jul		864	870	855 1/2	876 1/2
Sep		864	870 1/2	856	877
Dec		867	872 3/4	858 1/4	879 1/4
SB Meal					
Jan	Holiday	451.80	466.30	464.10	478.50
Mar		447.80	461.30	458.50	471.00
May		440.70	453.40	450.20	461.00
Jul		436.20	447.90	444.60	454.30
Aug		428.40	438.90	435.10	443.10

MISSOURI GRAIN WEEKLY TRENDS

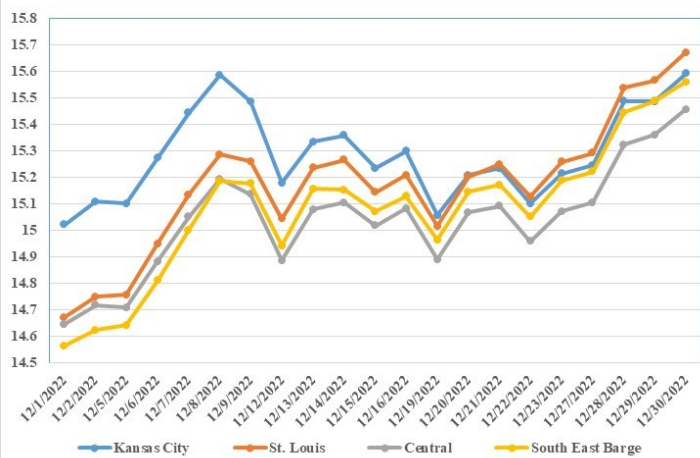
Compared to last week, Soybeans 0.29 to 0.47 higher, Wheat 0.16 higher, Corn 0.10 to 0.16 higher, Sorghum 0.12 to 0.13 higher.

Area	#1 Soybeans	#2 Soft Wheat	#2 Corn	#2 Grain Sorghum
Kansas City				
Friday**	15.09-15.29	7.96	7.06-7.28	6.71
Monday	Holiday	Holiday	Holiday	Holiday
Tuesday	15.12-15.32	7.94	7.14-7.36	6.79
Wednesday	15.36-15.56	8.05	7.22-7.44	6.87
Thursday	15.39-15.59	7.94	7.20-7.40	6.85
Friday	15.49-15.69	8.12	7.19-7.39	6.84
St. Louis				
Friday**	15.25-15.27	7.11-8.11	6.81-6.83	6.41-6.76
Monday	Holiday	Holiday	Holiday	Holiday
Tuesday	15.28-15.30	7.09-8.09	6.89-6.91	6.49-6.84
Wednesday	15.54	7.20-8.20	6.98-6.99	6.57-6.92
Thursday	15.57	7.09-8.09	6.97-6.98	6.55-6.90
Friday	15.67	7.27-8.27	6.96-6.97	6.54-6.89
Central				
Friday**	15.04-15.09	7.36-7.56	7.01	---
Monday	Holiday	Holiday	Holiday	---
Tuesday	15.07-15.12	7.34-7.54	7.09	---
Wednesday	15.24-15.36	7.45-7.65	7.17	---
Thursday	15.31-15.39	7.34-7.54	7.10-7.15	---
Friday	15.39-15.49	7.52-7.72	7.09-7.14	---
S.E. MO				
Friday**	15.19	7.71	6.76-6.96	---
Monday	Holiday	Holiday	Holiday	---
Tuesday	15.17-15.27	7.69	6.84-7.04	---
Wednesday	15.36-15.51	7.80	6.90-7.12	---
Thursday	15.39-15.56	7.69	6.86-7.10	---
Friday	15.45-15.64	---	6.79-7.09	---

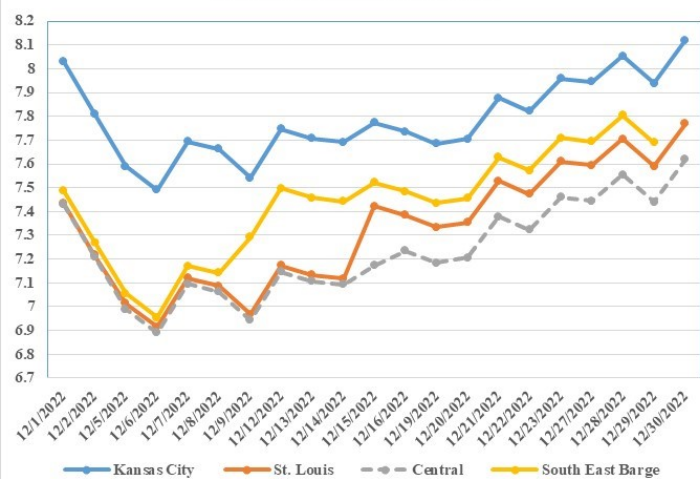
(PRICES PER BUSHEL) *NEW CROP **PREVIOUS WEEK'S PRICES
*Bids calculated using Kansas City, St. Louis, and St. Joseph bids

MONTHLY GRAIN CROP

December 2022 Soybean Bids



December 2022 Wheat Bids



December 2022 Corn Bids



*Axis value ranges may be updated to reflect data points.

WHOLESALE FEEDSTUFFS PRICES 12/23/22
(DOLLARS PER TON-BULK BASIS)

Area	Soybean Hulls	Soybean Meal 46.5-48%	Corn Gluten Pellets 21%	Wheat Middlings
Kansas City	225.00	452.30	306.50	297.50
St. Louis	n/a	n/a	290.00	264.67

EGG PRODUCTS 12/28/22

Shell eggs broken totaled 196 million dozen during November 2022, down 1 percent from November a year ago, and 4 percent below the 204 million dozen broken during the previous month.

During calendar year 2022 through November, shell eggs broken totaled 2.18 billion dozen, up 4 percent from the comparable period in 2021. To date, cumulative total edible product from eggs broken in 2022 was 2.80 billion pounds, up 4 percent from 2021.

Data presented in this report were compiled from Food Safety and Inspection Service (FSIS) inspection reports. The best available data at the time of publication were used.

PEANUT STOCKS AND PROCESSING 12/28/22

Peanut stocks reported in commercial storage on November 30, 2022 totaled 5.38 billion pounds of equivalent farmer stock, compared with 5.48 billion pounds a year ago. This total includes 4.70 billion pounds of actual farmer stock.

Shelled peanuts on hand totaled 645 million pounds of farmer stock equivalent. Roasting stock totaled 33.8 million pounds. Shelled peanut stocks totaled 485 million pounds of which 462 million pounds were edible grades and 23.5 million pounds were oil stocks. Edible grade stocks by type included 87.1 million pounds of Virginias and Valencias, 359 million pounds of Runners, and 15.3 million pounds of Spanish.

Millings in November totaled 384 million pounds. Millings by type were 64.7 million pounds of Virginias and Valencias, 319 million pounds of Runners, and 66,000 pounds of Spanish. Commercial processors utilized 197 million pounds of shelled edible grade peanuts during November. Utilization by type was 127 million pounds for all peanut butter products, 28.0 million pounds for peanut candy, and 38.5 million pounds for peanut snacks. Crushing for oil and cake and meal totaled 53.1 million pounds during the month. Deliveries under the Government Domestic Feeding and Child Nutrition Programs amounted to 2.04 million pounds of peanut butter and 51,840 pounds of roasted peanuts during November.

Stocks of treated seed on hand November 30, 2022 totaled 372,000 pounds, compared with 375,000 on October 31, 2022. Of the November total, 326,000 pounds were Runners. October stocks of treated seed included 326,000 pounds of Runners.

Stocks estimates refer to November 30, 2022. All other data are for the month of November.

AGRICULTURAL PRICES

Prices Received, Prices Paid, and Ratio of Prices Received to Prices Paid Indexes 2011 Base – United States: November 2022 with Comparisons

<u>Index Group</u>	<u>Nov 2021</u>	<u>Oct 2022</u>	<u>Nov 2022</u>
Prices Received by Farmers	108.6%	127.7%	133.4%
Prices Paid by farmers	123.7%	137.1%	137.1%
Ratio of received to paid	88%	93%	97%

MISSOURI WEEKLY HAY SUMMARY 12/22/2022

Farmers spent the early week preparing, best they could, for the official arrival of winter which arrived in full force mid-week. Temperatures and wind chills forecasted at dangerously low levels prior to Christmas will make the shortest days of the year likely seem quite long. Wind chills are forecasted to be 25-35 below zero and any one that has been in the livestock business long knows that means nothing wants to run, everything wants to break and trying to keep livestock fed and watered will really make one consider selling out and moving to Florida. Any hay movement will likely be temporarily halted as most trucks will remain parked due to weather and the holiday. The supply of hay is light to moderate, demand is moderate, and prices mostly steady. The Missouri Department of Agriculture has a hay directory visit <http://mda.mo.gov/abd/haydirectory/> for listings of hay <http://agebb.missouri.edu/haylst/>

Alfalfa - Supreme 250.00-300.00, small square 10.00-15.00 per bale
Alfalfa - Premium 180.00-250.00
Alfalfa - Good 150.00-180.00, small square 5.00-9.00 per bale
Alfalfa - Fair 125.00-150.00
Alfalfa/grass mix - Good/Premium small square 5.00-9.00 per bale
Mixed grass - Good/Premium 125.00-175.00
Mixed grass - Fair/Good 100.00-150.00, small square 5.00-8.00 per bale
Mixed grass - Fair 50.00-85.00 per large round bale
Wheat straw - 4.00-7.00 per small square bale

Please Note: The above volumes (tonnage, acres, and bales) listed on this USDA LPGMN report are for confirmed trades only, it does not include estimated volume (tonnage) for bids or offers to the trade.

The current hay directory can be found at:

<https://apps.mda.mo.gov/HayDirectory>.

List your hay for sale at:

<https://agmarketnews.mo.gov/hay-directory/hay-listing-online-form#no-back>

MISSOURI WEEKLY SHEEP/GOAT AUCTION SUMMARY

12/16/22

Receipts: 641 Week Ago: 350 Last Year: 777

SHEEP: Feeder lambs hair Small and Medium 1-2 pkg 37 lbs 325.00; 40-50 lbs 267.50-310.00; pkg 50 lbs 287.50. Slaughter lambs Choice and Prime 1-3 w/s pkg 108 lbs 175.00. Choice 1-3 w/s pkg 112 lbs 145.00. Good 1-2 w/s 90-105 lbs 105.00. Choice and Prime 1-3 hair 50-70 lbs 255.00-290.00; 70-85 lbs 230.00-260.00; pkg 90 lbs 190.00. Choice 1-3 hair 60-70 lbs 237.50-262.50; 10 hd 70 lbs 227.50 ;90-100 lbs 150.00. Slaughter ewes Utility and Good 1-3 pkg 178 lbs 75.00. Slaughter ewes Good 2-3 hair 100-150 lbs .115.00-127.50. Utility and Good 1-3 hair 80-145 lbs 90.00-115.00. Cull and Utility 1-2 hair pkg 78 lbs 65.00. Bucks 1-2 hair 115-135 lbs 105.00-170.00; 150-185 lbs 90.00-117.50.

Replacements: Families Small and Medium 1-2 2-4 yrs 100-120 lbs exposed with baby to 20 lb lambs 220.00-330.00 per family.

Goats: Feeder kids Selection 1 25-50 lbs 320.00-340.00. Selection 2 35-45 lbs 195.00-210.00, pygmies 195.00-227.50. Selection 3 pkg 40 lbs pygmies 165.00. Slaughter kids Selection 1 50-60 lbs 300.00-310.00; 60-70 lbs 292.50-317.50; pkg 92 lbs 185.00. Selection 2 50-60 lbs 257.50-260.00; 70-80 lbs 270.00-275.00. Selection 3 pkg 55 lbs 180.00. Slaughter nannies/does Selection 1-2 70-90 lbs 125.00-232.50; 90-100 lbs 90.00-162.50; 100-150 lbs 125.00-160.00. Slaughter bucks/billies Selection 1-2 pkg 55 lbs pygmies 175.00; 100-135 lbs 150.00-220.00; 155-190 lbs 200.00-230.00. Slaughter wethers Selection 1-2 pkg 80 lbs 212.50. Wether kids Selection 1 pkg 50 lbs 312.50.

Explanatory Notes: Stage - Represents estimated lambing/kidding period (Open, Exp=exposed, Bred, Fall = Sep-Nov, Win = Dec-Feb, Spr = Mar-May, Sum=Jun-Aug; w/s = woolled and shorn; /hd= per head; All price CWT unless otherwise noted.

MISSOURI DROUGHT MONITOR 12/29/2022

<u>Date</u>	<u>None</u>	<u>D0</u>	<u>D1</u>	<u>D2</u>	<u>D3</u>	<u>D4</u>
12/27/22	36.43	32.71	29.03	1.83	0	0
12/20/22	39.96	29.18	29.03	1.83	0	0
12/28/21	50.83	45.25	3.51	0.41	0	0

Reflects percentage of Missouri impacted by drought.
D0 Abnormally Dry; D1 Moderate Drought; D2 Severe Drought; D3 Extreme Drought; D4 Exceptional Drought

NATIONAL DIRECT DELIVERED FEEDER PIG REPORT

12/30/22 Receipts: 83,796 Week ago: 62,724 Year Ago: 69,313
Early weaned pigs 4.00 per head higher and feeder pigs steady.
Early weaned pigs 10-12 lbs. basis:
Cash 43,850 head 54.00-69.00, weighted average 60.84
Formula 29,706 head 49.37-62.49, weighted average 55.66
Feeder pigs 40 pounds basis:
Cash 10,240 head 53.00-82.00, weighted average 73.36

NATIONAL DAILY DIRECT PRIOR DAY HOG REPORTS FOR 12/30/22

BARROWS AND GILTS (Carcass Basis): 7,210 head
Base Carcass Price 69.00-80.00, weighted average 75.21

SOWS (Live Basis): 6,678 head
300-500 lbs. 17.00-58.00
Over 500 lbs. 30.00-59.00

MISSOURI WEEKLY DIRECT SLAUGHTER CATTLE REPORT 12/30/22

Weekly Receipts: 240 Week ago: 120 Year ago: 160
Trade as of Friday morning: trade is light as many producers are passing bids and packers reducing processing. Light volume with flat dressed sales 3.00 higher and grid dressed sales 4.00 higher.

LIVE STEERS & HEIFERS: No sales reported
DRESSED STEERS & HEIFERS: 3 loads Thu afternoon 250.00 flat

GRADE AND WEIGHT (Grid): 3 loads Thu afternoon 260.00

Click here for the current [National Crop Progress](#)
Click here for the current [Missouri Crop Progress](#)