

Weekly Market Summary

Published by:
Missouri Department of Agriculture
Ag Business Development Division
Market News Program



Chris Chinn, Director
 Jill Wood, Division Director
 Tony Hancock, Editor
<http://www.ams.usda.gov/marketnews.htm>
agmarketnews.mo.gov

Michael L. Parson, Governor

Volume XLIII, Number 3 ♦ P.O. Box 630, Jefferson City, MO 65102 ♦ (573) 751-4211 ♦ Monday, January 23, 2023

MISSOURI WEEKLY FEEDER CATTLE WEIGHTED AVERAGE REPORT

Receipts: 36,894 Week ago: 49,302 Year ago: 26,900

Steers and Heifers Medium and Large 1—Weighted average weights and prices

STEERS: Medium and Large 1

HEIFERS: Medium and Large 1

283 lbs. 244.19	474 lbs. 222.82	671 lbs. 184.32	873 lbs. 171.41	329 lbs. 193.79	524 lbs. 179.99	720 lbs. 167.83	916 lbs. 154.39
330 lbs. 226.84	526 lbs. 211.93	722 lbs. 180.34	942 lbs. 165.51	378 lbs. 191.91	572 lbs. 176.12	781 lbs. 166.32	
377 lbs. 226.06	573 lbs. 205.35	771 lbs. 178.07	961 lbs. 161.87	426 lbs. 186.79	622 lbs. 172.09	818 lbs. 159.32	
427 lbs. 224.00	620 lbs. 192.40	820 lbs. 173.72		478 lbs. 186.23	673 lbs. 170.25	865 lbs. 158.63	

Missouri Steer (Heifer) Stocker Formula for 01/23/2023

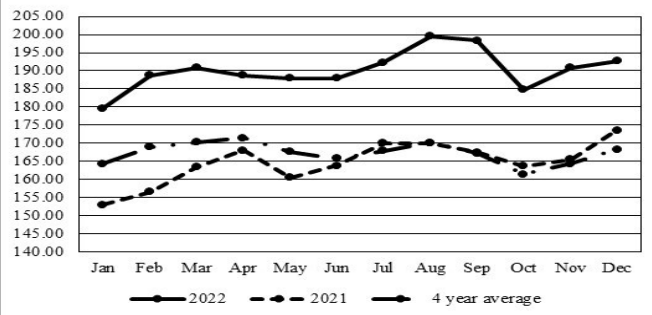
Monday's Missouri Stocker Formula consists of **8207 (8129)** head with a weighted average weight of **547.79 (532.24)** lbs. and a price value of **201.30 (174.76)**, 1.28 higher (1.35 lower) than last week.

This a rolling seven day calculated weighted value which combines all Feeder Steers reported by MDA/USDA Market News Service weighing from 400-649 lbs. in the Medium and Large 1 and Medium and Large 1-2 frame and muscle classifications, including all comment cattle except Brahman X. Heifer values are in parentheses.

Missouri Weekly Cattle Auction Summary 01/23/2023

Compared to last week, feeders sold unevenly steady to 5.00 lower. A few instances of lightweight top quality calves in the condition to gain weight quickly being a touch higher but this was the exception as over all markets failed to reach many of the top prices seen recently. After two weeks of heavy supplies auctions got a bit of a break this week and most barns had only had moderate runs. Weather in areas like Nebraska and Iowa continued to cause problems for some northern orders but buyers to the south and west took the opportunity to fill many orders for grazers even though they have to have a place and feed to take care of them for quite a while before any grazing will be available. Overall quality was a bit lower and load lots weren't nearly as plentiful. The monthly cattle on feed report was released on Friday afternoon. Pre-report estimates had placements, the area which generally provides surprises if there is any, with an average guess of 91.5 percent and a range of 89.4-94.4 percent of last year. When all was said and done all three areas of the report did fall very close to pre-report estimates and should be viewed as a generally neutral report. On feed was reported at 92 percent, placements at 92 percent and marketings at 94 percent. Those numbers support the overall tightness of supplies. Boxed beef cutouts were lower once again this week, choice closed at 271.72, down 4.90 and select closed at 256.43, down 0.46 compared to last Friday. Negotiated feedlot sales as of Friday afternoon was reported just under 59k head. Sales were lower again this week, live sales were reported mostly from mostly 155.00 up to 157.00, dressed sales mostly at 248.00 with a few early at 249.00. The Missouri Stocker Formula consist of 8207 head with a weighted average weight of 547.79 lbs. and a price value of 201.30, 1.28 higher than last week. The steer/heifer spread is 26.54.

Missouri Stocker Formula - Steers

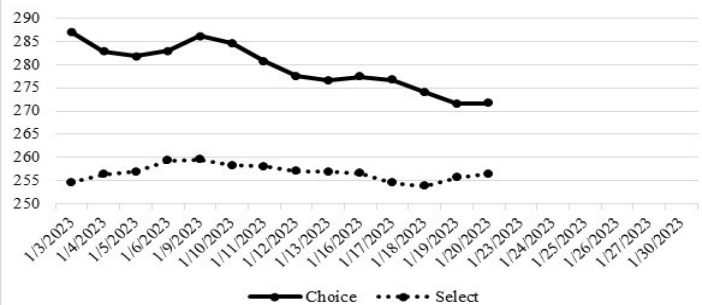


*Graph is updated the first Monday of each month.

NATIONAL BOXED BEEF CUTOUT/BOXED BEEF CUTS

DATE	CHOICE	SELECT	TOTAL LOADS
01/16	277.43	256.55	91
01/17	276.66	254.53	133
01/18	274.08	253.86	123
01/19	271.51	255.69	130
01/20	271.72	256.43	129
5 Day Simple Average	274.28	255.41	

Boxed Beef Cuts January 2023



*Axis value ranges may be updated to reflect data points.

WEEKLY LIVESTOCK SLAUGHTER 01/21/23

	CATTLE	HOGS	SHEEP
Week to Date:	646,000	2,531,000	32,000
Last Week:	661,000	2,684,000	30,000
Last Year:	637,000	2,436,000	30,000

The Weekly Market Summary, as well as historical summaries, are available on our website <https://agmarketnews.mo.gov/summaries>
 Market News Hotline: 1-573-522-9244

SOUTHWEST MISSOURI WEEKLY SUMMARY

(Joplin and Springfield)

Receipts: 14,470 Week ago: 16,355 Year ago: 8798

Compared to last week, steers and heifers mostly steady to 5.00 lower, except some heifers early week steady to 2.00 higher. Slaughter cows uneven from 2.00 lower to 5.00 higher. Slaughter bulls steady to 2.00 lower.

FEEDER STEERS:
Medium and Large 1

300-400 lbs.	212.00-249.00
400-500 lbs.	207.00-235.00
500-600 lbs.	185.00-222.00
600-700 lbs.	174.00-199.00
700-800 lbs.	169.00-192.50
800-900 lbs.	171.00-178.00
900-1000 lbs.	167.00-168.00

FEEDER HEIFERS:
Medium and Large 1

300-400 lbs.	175.00-204.00
400-500 lbs.	170.00-204.00
500-600 lbs.	164.00-188.00
600-700 lbs.	161.50-175.50
700-800 lbs.	164.00-171.50
800-900 lbs.	155.25-166.50
Pkg 930 lbs.	158.00

FEEDER HOLSTEIN STEERS
Large 3

Scarce

SLAUGHTER COWS: Breaking and Boning (70-85% lean) 64.00-78.50, high dressing 74.00-85.00; low dressing 58.00-68.00. Lean (85-90%) 52.50-67.00
SLAUGHTER BULLS: Yield Grade 1-2 1200-2275 lbs. 85.00-103.00; high dressing 98.00-115.50; low dressing 76.00-93.00

BRED COWS: Medium and Large 1 2-8 yrs 1045-1455 lbs 2nd to 3rd stage 1310.00-1710.00, 1st stage 1200.00-1235.00; over 8 yrs 1141 lbs 2nd to 3rd stage 1350.00. Medium and Large 1-2 2-8 yrs 985-1590 lbs 2nd to 3rd stage 900.00-1525.00, 1st stage 1100.00-1350.00 per head
BRED HEIFERS: Medium and Large 1 981-1142 lbs 2nd to 3rd stage 1600.00-1900.00. Medium and Large 1-2 713-1156 lbs 1050.00-1500.00 per head

COW & CALF PAIRS: Medium 1-2 2-8 yrs 1189-1424 lbs with baby to 300 lb calves 1700.00-1775.00; 2-8 yrs 1562-1580 lbs rebred 1st or 2nd stage with over 300 lb calves 2150.00-2275.00; over 8 yrs 7 pairs 1572lbs rebred 1st or 2nd stage with over 300 lb calves 1935.00 per pair

SOUTH CENTRAL MISSOURI WEEKLY SUMMARY

(West Plains, Phillipsburg)

Receipts: 5160 Week ago: 8603 Year Ago: 3662

Compared to last week, steers and heifers 2.00 to 6.00 lower, except some light calves steady to 4.00 higher early week. Slaughter cows and bulls mostly steady.

FEEDER STEERS:
Medium and Large 1

300-400 lbs.	215.00-235.00
400-500 lbs.	206.00-221.50
550-600 lbs.	189.00-210.00
600-700 lbs.	176.00-193.00
700-800 lbs.	167.00-172.50

FEEDER HEIFERS:
Medium and Large 1

300-400 lbs.	176.00-201.00
400-500 lbs.	169.00-185.00
500-600 lbs.	164.00-182.00
600-700 lbs.	160.00-171.50
700-800 lbs.	154.50-160.00

FEEDER HOLSTEIN STEERS
Large 3

15 hd 497 lbs. 120.00

SLAUGHTER COWS: Breaking and Boning (70-85% lean) 67.50-80.00, high dressing 77.50-90.00; low dressing 59.00-69.00. Lean (85-90%) 57.00-68.00
SLAUGHTER BULLS: Yield Grade 1-2 1225-2055 lbs. 85.00-103.00; high dressing 105.00-120.00; low dressing 70.00-89.00

BRED COWS: Medium and Large 1-2 2-8 yrs 1010-1490 lbs 1st to 3rd stage 900.00-1400.00; over 8 yrs 1135-1175 lbs 2nd to 3rd stage 1150.00-1175.00 per head

COW & CALF PAIRS: Scarce

BRED HEIFERS: Medium and Large 1-2 815-915 lbs 1st to 3rd stage 1100.00-1125.00 per head

WEST CENTRAL MISSOURI WEEKLY SUMMARY

(Kingsville, Windsor, Butler)

Receipts: 7772 Week ago: 9347 Year ago: 6689

Compared to last week, steer and heifers calves uneven from 7.00 lower to 6.00 higher with the gain specifically on steers, yearlings steady to 2.00 lower. Slaughter cows 2.00 to 5.00 higher.

FEEDER STEERS:
Medium and Large 1

400-500 lbs.	200.50-239.00
500-600 lbs.	190.00-235.00
600-700 lbs.	179.50-206.00
700-800 lbs.	168.00-187.10
800-850 lbs.	168.00-178.85

FEEDER HEIFERS:
Medium and Large 1

400-500 lbs.	178.00-202.00
500-600 lbs.	165.50-197.00
600-700 lbs.	162.00-187.00
Pkg 857 lbs.	151.50159.50
Lot 903 lbs.	

SLAUGHTER BULLS: Yield Grade 1-2 1255-2140 lbs 93.00-118.00; high dressing 112.00-118.00; low dressing few 87.00-91.50

SLAUGHTER COWS: Breaking and Boning (70-85% lean) 67.50-81.50, high dressing 77.00-88.00; low dressing 64.00-68.00. Lean (85-90%) 56.00-72.00

BRED COWS: Medium and Large 1-2 2-8 yrs 1185-1515 lbs 2nd to 3rd stage 1000.00-1035.00 per head

COW & CALF PAIRS: Scarce

NORTHEAST MISSOURI WEEKLY SUMMARY

(Bowling Green, Kingdom City, Palmyra)

Receipts: 4959 Week ago: 7978 Year ago: 2906

Compared to last week, steers under 500 lbs 10.00 to 15.00 higher, 500-700 lbs 4.00 to 8.00 higher, 700-800 lbs firm to 5.00 higher. Heifers 400-750 lbs mostly steady to 5.00 higher. Slaughter cows steady to firm.

FEEDER STEERS:
Medium and Large 1

400-500 lbs.	210.00-239.00
500-600 lbs.	197.00-228.00
600-700 lbs.	184.50-205.75
700-750 lbs.	174.75-184.85
Pkg 824 lbs.	

FEEDER HEIFERS:
Medium and Large 1

400-500 lbs.	184.00-207.00
500-600 lbs.	176.00-195.25
600-700 lbs.	175.00-181.50
700-800 lbs.	165.25-174.25

SLAUGHTER BULLS: Yield Grade 1-2 1415-2295 lbs 94.00-104.50; high dressing 101.00-109.00; low dressing 82.50-95.50

SLAUGHTER COWS: Breaking and Boning, (70-85% lean) 70.00-83.00; high dressing 78.00-87.00; low dressing 61.00-74.50. Lean (85-90%) 63.00-73.00

SLAUGHTER STEERS: Choice 2-3 155.50-164.50. Select and Choice 1-3 152.00-155.50. Select and Choice 2-3 151.50.

BRED COWS: Medium and Large 1 2-4 yrs 1150-1300 lbs 2nd to 3rd stage 2050.00-2150.00; 2-8 yrs 1100-1253 lbs 2nd to 3rd stage 1800.00-1900.00. Medium and Large 1-2 2-8 yrs 1020-1305 lbs 2nd to 3rd stage 1400.00-1850.00 per head

SLAUGHTER HEIFERS: Choice and Prime 2-4 163.00-170.00. Choice 2-3 156.50-163.50.

COW/CALF PAIRS: Medium and Large 1-2 2-8 yrs 1050-1100 lbs with 150-300 lb calves 1900.00-2175.00 per pair

NORTH CENTRAL MISSOURI WEEKLY SUMMARY

(Macon, Unionville, Green City, New Cambria)

Receipts: 3775 Week ago: 7142 Year ago: 4858

Compared to last week, steers and heifers uneven from 5.00 lower to 5.00 higher. Slaughter cows mostly steady to 2.00 higher.

*Some sale barns on a bi-weekly schedule and may not have a sale each week.

FEEDER STEERS:
Medium and Large 1

400-500 lbs.	222.00-245.00
500-600 lbs.	195.00-231.00
600-700 lbs.	173.50-205.50
700-800 lbs.	174.25-180.00
61 hd 887 lbs.	171.50

FEEDER HEIFERS:
Medium and Large 1

400-500 lbs.	180.50-199.75
500-600 lbs.	165.00-194.50
650-700 lbs.	164.00-185.50
700-750 lbs.	168.00-175.25
	154.00

SLAUGHTER BULLS: Yield Grade 1-2 1380-2090 lbs 92.50-102.00; low dressing 75.00-89.50

SLAUGHTER COWS: Breaking and Boning, (70-85% lean) 63.50-80.00; high dressing 69.00-83.50; low dressing 61.00-69.00. Lean (85-90%) 52.50-69.00

BRED COWS: Scarce

BRED HEIFERS: Scarce

SOUTHEAST MISSOURI WEEKLY SUMMARY

(Jackson and Farmington)

Receipts: 1732 Week ago: 1573 Year ago: 2191
 Compared to last week, steers and heifers steady to 12.00 higher.
 Slaughter cows and bulls steady.

FEEDER STEERS:
 Medium and Large 1

300-400 lbs.	200.00-227.50
400-500 lbs.	172.00-207.00
500-600 lbs.	181.00-200.00
600-700 lbs.	165.00-185.00
700-800 lbs.	150.00-176.00
800-850 lbs.	155.00-174.50

FEEDER HEIFERS:
 Medium and Large 1

300-400 lbs.	160.00-191.00
400-500 lbs.	160.00-192.00
500-600 lbs.	156.00-181.00
600-700 lbs.	145.00-171.00
700-800 lbs.	150.00-162.00
800-900 lbs.	145.00-152.50

SLAUGHTER BULLS: Yield
 Grade 1-2 1190-2405 lbs. 75.00-95.00; high dressing 95.00-102.00

SLAUGHTER COWS: Breaking and Boning (75-85% lean) 58.00-70.00; high dressing 68.00-79.00. Lean (85-90% lean) 45.00-59.00

BRED COWS: Medium and Large 2 2-8 yrs 1060-1335 lbs 2nd to 3rd stage 900.00-1125.00 per head

COW & CALF PAIRS: Medium and Large 2 couple 2-8 yrs 1100-1150 lbs with 150-300 lb calves 1025.00-1375.00 per pair

EAST CENTRAL MISSOURI WEEKLY SUMMARY

(Cuba, Vienna)

Receipts: 2583 Week ago: 3852 Year ago: 1664
 Compared to last week, steers under 650 lbs steady to 5.00 higher, over 650 lbs steady to 3.00 lower. Heifers steady with several under 550 lbs 3.00 to 12.00 lower. Slaughter cows 4.00 lower to 3.00 higher.

FEEDER STEERS:
 Medium and Large 1

400-500 lbs.	212.00-235.00
500-600 lbs.	186.00-223.00
600-700 lbs.	172.00-192.25
700-800 lbs.	168.75-175.25
800-900 lbs.	160.00-171.00

FEEDER HEIFERS:
 Medium and Large 1

400-500 lbs.	176.00-190.00
500-600 lbs.	169.00-187.00
600-700 lbs.	160.50-173.00
700-800 lbs.	149.50-165.50
800-900 lbs.	141.00-146.50

SLAUGHTER BULLS: Yield
 Grade 1-2 1340-2090 lbs 93.00-103.00; low dressing 77.00-90.00

SLAUGHTER COWS: Breaking and Boning, (70-85% lean) 71.00-81.50; high dressing 79.50-85.00; low dressing 65.00-72.50. Lean (85-90%) 60.00-72.50

BRED COWS: Medium and Large 1-2 2-8 yrs 885-1232 lbs 1st to 3rd stage 900.00-1250.00 per head

COW & CALF PAIRS: Medium and Large 1-2 2-8 yrs 1000-1320 lbs with baby to 150 lb calves 1185.00-1350.00 per pair

NORTHWEST MISSOURI WEEKLY SUMMARY

(Tina)

Receipts: 1308 Week ago: 2508
 Compared to last week, steers 4.00 to 6.00 higher, but 6 weights sharply lower. Heifers mostly steady, few spots slightly lower. Slaughter cows and bulls steady to 2.00 lower.

FEEDER STEERS:
 Medium and Large 1

400-500 lbs.	207.00-224.50
500-600 lbs.	192.00-220.00
600-700 lbs.	175.00-199.00
700-800 lbs.	175.00-182.50
800-900 lbs.	165.00-176.50

FEEDER HEIFERS:
 Medium and Large 1

350-400 lbs.	180.00-191.00
400-500 lbs.	171.50-188.00
500-600 lbs.	170.00-184.50
600-650 lbs.	154.00-177.00
700-800 lbs.	161.00-167.50

SLAUGHTER BULLS: Yield
 Grade 1-2 1365-2150 lbs 91.00-96.00, few low dressing 77.00-81.00

SLAUGHTER COWS: Breaking and Boning, (70-85% lean) 60.00-76.50; high dressing 70.50-84.50. Lean (85-90%) 45.50-57.00

BRED COWS: Scarce

COW & CALF PAIRS: Scarce

AFTERNOON NATIONAL SLAUGHTER CATTLE REVIEW

01/20/2023

So far for Friday negotiated cash trading has been slow on light demand in the Southern Plains, Nebraska and Western Cornbelt. In the Texas Panhandle, compared to last week, live purchases traded 1.00 lower at 155.00, on a light test. In Kansas, compared to the last reported market on Thursday, live purchases traded steady at 155.00. Not enough purchases in Nebraska and Western Cornbelt for a full market trend. Thursday was the last reported market in Nebraska with live and dressed purchases trading at 155.00 and at 248.00, respectively. In the Western Cornbelt the latest established market was last week with live purchases at 158.00 and dressed purchases from 250.00 -252.00.

Negotiated Cash Sales:					
Confirmed:	13,966	Week Ago:	23,513	Year Ago:	3,887
Week to date:	58,630	Week Ago:	66,073	Year Ago:	68,592

Live Basis	Steers	Heifers
Over 80% Choice	155.00-158.00, avg 156.63	155.00-157.00, avg 156.32
65-80% Choice	155.00	155.00
35-65% Choice	155.00	-
0-35% Choice	-	-
Total All Grades	155.00-158.00, avg 155.71	155.00-157.00, avg 155.10
Dressed Basis		
Over 80% Choice	248.00-250.00, avg 249.34	248.00-249.00, avg 248.19
65-80% Choice	248.00	-
35-65% Choice	-	-
0-35% Choice	-	-
Total All Grades	248.00-250.00, avg 249.03	248.00-249.00, avg 248.19

WEEKLY COMMODITY FUTURES TRENDS

Compared to last week, Live Cattle 0.38 to 1.10 lower, Lean Hogs 0.83 to 1.65 lower, Feeder Cattle Jan, Mar, Apr 1.28 to 3.33 lower and May, Aug 0.07 to 0.72 lower.

Daily Futures Closes

	Mon.	Tues.	Wed.	Thu.	Fri.
Cattle					
Feb	Holiday	157.00	156.80	155.95	156.62
Apr		160.10	160.22	159.12	159.92
Jun		156.80	156.87	156.00	156.57
Aug		157.05	157.00	156.15	156.75
Oct		161.52	161.47	160.92	161.42
Lean Hogs					
Feb	Holiday	78.45	77.32	76.65	77.82
Apr		88.12	86.20	84.40	85.72
May		96.45	94.45	93.17	93.80
Jun		105.37	103.40	102.25	102.52
Jul		106.47	104.92	103.80	104.12
Fdr Cat					
Jan	Holiday	179.65	179.50	178.10	177.92
Mar		181.30	181.72	180.10	180.97
Apr		185.87	186.30	185.15	185.77
May		190.15	190.75	190.05	190.35
Aug		203.17	204.22	203.70	203.95
Milk					
Jan	Holiday	19.48	19.45	19.45	19.49
Feb		18.54	18.44	18.30	18.24
Mar		18.18	18.16	18.00	17.99

WEEKLY COMMODITY GRAIN FUTURES TRENDS

Compared to last week, Soybeans 0.21 to 0.40 lower, Wheat nearby 0.02 to 0.03 lower, Sep and Dec steady to 0.01 higher, Corn nearby steady to 0.01 higher, Sep and Dec 0.03 to 0.04 lower, KC Wheat steady to 0.05 higher, Soybean Meal 11.20 to 14.60 lower.

Daily Grain Futures Closes

	Mon.	Tues.	Wed.	Thu.	Fri.
Soybeans					
Mar	Holiday	1539 3/4	1524 1/2	1514 3/4	1506 1/2
May		1537 1/2	1521 1/2	1511 1/2	1501 3/4
Jul		1533 1/2	1515	1503 3/4	1493
Aug		1496 1/4	1476 1/2	1465 3/4	1453 1/2
Sep		1426 3/4	1407 1/2	1397 1/4	1385 1/4
Wheat					
Mar	Holiday	751 3/4	742 1/2	734 1/2	741 1/2
May		759	750 1/4	742 3/4	749
Jul		761	753 1/2	745 1/2	751 1/2
Sep		768 1/2	762	754 3/4	760
Dec		782 1/4	775 3/4	769 1/4	775
Corn					
Mar	Holiday	685 1/4	681 1/4	677 1/4	676 1/4
May		682 3/4	679 1/4	674 3/4	674 1/2
Jul		672 1/2	668	663 1/4	663 1/2
Sep		619 1/4	616 1/2	611	610 1/2
Dec		603 3/4	601	596 1/4	595 3/4
KC Wheat					
Mar	Holiday	855 3/4	841 1/2	832	848
May		849 1/4	837	827 1/2	841 1/4
Jul		843	832	823	835 1/2
Sep		845	834 1/4	825 1/4	838
Dec		850 1/2	840 3/4	831 1/2	844
SB Meal					
Jan	Holiday	481.20	478.10	471.20	463.70
Mar		466.30	460.20	456.20	451.00
May		458.70	450.60	447.10	442.50
Jul		445.80	437.00	433.20	428.80
Aug		429.10	420.70	416.20	412.40

MISSOURI GRAIN WEEKLY TRENDS

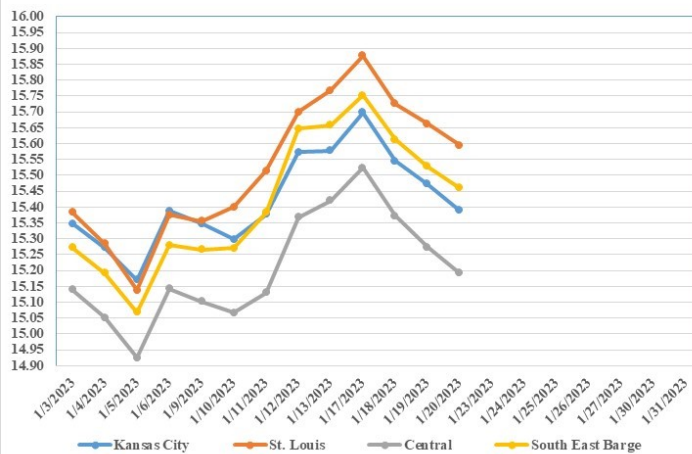
Compared to last week, Soybeans 0.11 to 0.23 lower, Wheat 0.02 to 0.03 lower, Corn 0.05 lower to 0.01 higher, Sorghum 0.01 higher.

Area	#1 Soybeans	#2 Soft Wheat	#2 Corn	#2 Grain Sorghum
Kansas City				
Friday**	15.43-15.73	7.74	7.15-7.25	6.80
Monday	Holiday			
Tuesday	15.55-15.85	7.82	7.25-7.35	6.90
Wednesday	15.40-15.70	7.73	7.21-7.31	6.86
Thursday	15.30-15.60	7.65	7.17-7.27	6.82
Friday	15.22-15.52	7.72	7.16-7.26	6.81
St. Louis				
Friday**	15.74-15.80	7.29-7.79	6.99-7.01	7.10
Monday	Holiday			
Tuesday	15.88	7.37-7.87	7.09-7.10	7.20
Wednesday	15.73	7.28-7.78	7.04-7.06	7.16
Thursday	15.65-15.68	7.20-7.70	6.94-6.97	7.12
Friday	15.57-15.63	7.27-7.77	6.94-6.96	7.11
Central				
Friday**	15.36-15.48	7.04-7.24	7.05-7.10	---
Monday	Holiday			
Tuesday	15.48-15.55	7.12-7.32	7.15-7.20	---
Wednesday	15.33-15.40	7.03-7.23	7.11-7.16	---
Thursday	15.23-15.30	6.95-7.15	7.07-7.12	---
Friday	15.15-15.22	7.17-7.22	7.06-7.11	---
S.E. MO				
Friday**	15.58-15.78	---	6.85-6.97	---
Monday	Holiday			
Tuesday	15.70-15.80	---	6.96-7.05	---
Wednesday	15.57-15.65	---	6.92-7.01	---
Thursday	15.49-15.55	---	6.86-6.97	---
Friday	15.45-15.47	---	6.87-6.96	---

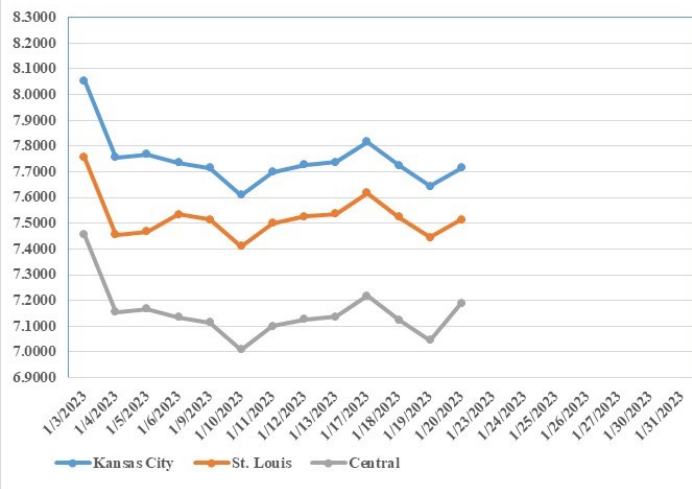
(PRICES PER BUSHEL) *NEW CROP **PREVIOUS WEEK'S PRICES
*Bids calculated using Kansas City, St. Louis, and St. Joseph bids

MONTHLY GRAIN CROP

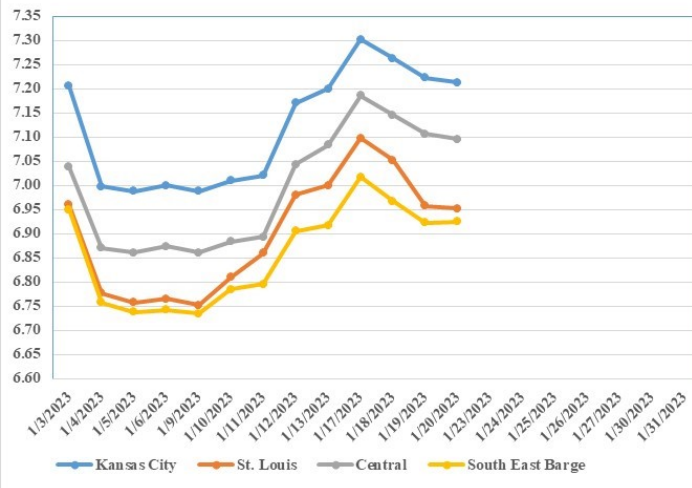
January 2023 Soybean Bids



January 2023 Wheat Bids



January 2023 Corn Bids



*Axis value ranges may be updated to reflect data points.

WHOLESALE FEEDSTUFFS PRICES 01/20/2023
(DOLLARS PER TON-BULK BASIS)

Area	Soybean Hulls	Soybean Meal 46.5-48%	Corn Gluten Pellets 21%	Wheat Middlings
Kansas City	230.00	472.20	309.00	272.00
St. Louis	n/a	n/a	295.00	246.67

LIVESTOCK SLAUGHTER 01/19/23

Commercial red meat production for the United States totaled 4.47 billion pounds in December, down 7 percent from the 4.78 billion pounds produced in December 2021.

Beef production, at 2.22 billion pounds, was 6 percent below the previous year. Cattle slaughter totaled 2.68 million head, down 5 percent from December 2021. The average live weight was down 7 pounds from the previous year, at 1,385 pounds.

Veal production totaled 4.5 million pounds, 15 percent below December a year ago. Calf slaughter totaled 32,900 head, down 15 percent from December 2021. The average live weight was unchanged from last year, at 237 pounds.

Pork production totaled 2.23 billion pounds, down 7 percent from the previous year. Hog slaughter totaled 10.3 million head, down 7 percent from December 2021. The average live weight was unchanged from the previous year, at 292 pounds.

Lamb and mutton production, at 10.9 million pounds, was down 7 percent from December 2021. Sheep slaughter totaled 176,100 head, 7 percent below last year. The average live weight was 122 pounds, down 1 pound from December a year ago.

January to December 2022 commercial red meat production was 55.5 billion pounds, down 1 percent from 2021. Accumulated beef production was up 1 percent from last year, veal was up 1 percent, pork was down 2 percent from last year, and lamb and mutton production was down 5 percent.

CATTLE ON FEED 01/20/23

Cattle and calves on feed for the slaughter market in the United States for feedlots with capacity of 1,000 or more head totaled 11.7 million head on January 1, 2023. The inventory was 3 percent below January 1, 2022. The inventory included 7.03 million steers and steer calves, down 4 percent from the previous year. This group accounted for 60 percent of the total inventory. Heifers and heifer calves accounted for 4.65 million head, down 1 percent from 2022.

Placements in feedlots during December totaled 1.80 million head, 8 percent below 2021. Net placements were 1.75 million head. During December, placements of cattle and calves weighing less than 600 pounds were 455,000 head, 600-699 pounds were 435,000 head, 700-799 pounds were 415,000 head, 800-899 pounds were 304,000 head, 900-999 pounds were 105,000 head, and 1,000 pounds and greater were 90,000 head.

Marketings of fed cattle during December totaled 1.74 million head, 6 percent below 2021.

Other disappearance totaled 54,000 head during December, unchanged from 2021.

MISSOURI WEEKLY HAY SUMMARY 01/20/2023

Late last week NASS released the official hay stocks and production numbers. December 1 stocks for Missouri were reported 15 percent lower than the previous year and 2022 production was reported down 10 percent, both of which fell right in line with the national averages. Those numbers were not anything that anyone in the business didn't already know but are now official. Although we do not get numbers by the region some areas of the state were much worse than that. The supply of hay is light to moderate, demand is moderate, and prices mostly steady. The Missouri Department of Agriculture has a hay directory visit <http://mda.mo.gov/abd/haydirectory/> for listings of hay <http://agebb.missouri.edu/haylst/>

Alfalfa - Supreme 250.00-300.00, small square 10.00-15.00 per bale

Alfalfa - Premium 180.00-250.00

Alfalfa - Good 150.00-180.00, small square 5.00-9.00 per bale

Alfalfa - Fair 125.00-150.00

Alfalfa/grass mix - Good/Premium small square 5.00-9.00 per bale

Mixed grass - Good/Premium 125.00-175.00

Mixed grass - Fair/Good 100.00-150.00, small square 5.00-8.00 per bale

Mixed grass - Fair 50.00-85.00 per large round bale

Con stalk - 35.00 per round bale

Wheat straw - 4.00-7.00 per small square bale

Please Note: The above volumes (tonnage, acres, and bales) listed on this USDA LPGMN report are for confirmed trades only, it does not include estimated volume (tonnage) for bids or offers to the trade.

The current hay directory can be found at:

<https://apps.mda.mo.gov/HayDirectory>.

List your hay for sale at:

<https://agmarketnews.mo.gov/hay-directory/hay-listing-online-form#no-back>

MISSOURI WEEKLY SHEEP/GOAT AUCTION SUMMARY

01/23/2023

Receipts: 1358 Week Ago: 2809 Last Year: 889

SHEEP: Feeder Lambs: Medium and Large 1-2 30-40 lbs 270.00-272.00. Small and Medium 1-2 hair 35-50 lbs 270.00-300.00. Small and Medium 2 hair 11 hd 37 lbs thin 180.00; pkg 47 lbs 200.00. Slaughter lambs Choice and Prime 1-3 w/s pkg 137 lbs 130.00; pkg 165 lbs 115.00. Choice and Prime 1 woolled pkg 62 lbs 300.00. Choice and Prime 1-2 woolled 50-75 lbs 212.00-275.00. Choice and Prime 1-2 hair 40-50 lbs 225.00-270.00; 50-60 lbs 185.00-272.00; 60-70 lbs 270.00-275.00; 70-80 lbs 245.00-250.00; pkg 92 lbs 185.00. Choice and Prime 1-3 hair 50-60 lbs 262.50-310.00; 60-70 lbs 235.00-257.50; 70-80 lbs 220.00-245.00. Choice 1-2 hair 50-60 lbs 212.00-245.00. Choice 1-3 50-65 lbs 200.00-230.00. Choice 2 hair pkg 45 lbs 235.00. Slaughter ewes Utility and Good 1-2 100-150 lbs 110.00-132.00. Utility and Good 2 100-165 lbs 110.00-135.00. Utility and Good 2-3 75-90 lbs 90.00-110.00; 90-100 lbs 75.00-85.00; 115-135 lbs 85.00-90.00; 170-200 lbs 92.00-105.00. Good 2-3 hair pkg 85 lbs 120.00; 90-100 lbs 137.50-145.00; 100-115 lbs 120.00-140.00. Utility and Good 1-3 70-105 lbs 85.00-120.00. Cull and Utility 1-2 hair 90-100 lbs 75.00-87.50. Slaughter Bucks 1-2 hair pkg 97 lbs 135.00; pkg 135 lbs 135.00. Replacement ewes Medium and Large 1-2 1-2 yrs 110-135 lbs exp 157.00-225.00. Small and Medium 1-2 hair 1-2 yrs exp 90-115 lbs 150.00-190.00. Families Small and Medium 1-2 2-4 yrs 80-86 lbs exp with baby to 20 lb lambs 160.00-255.00 per family.

GOATS: Feeder kids Selection 1 20-45 lbs 300.00-325.00, fancy 330.00, replacements 360.00-365.00. Selection 1-2 20-30 lbs 290.00-295.00; 30-40 lbs 265.00-270.00. Selection 2 30-50 lbs 230.00-300.00. Wether kids Selection 1 30-40 lbs 305.00-320.00. Selection 2 20-40 lbs 235.00-255.00. Slaughter kids Selection 1-2 40-50 lbs 255.00-270.00; 50-65 lbs 230.00-260.00. Selection 2 50-70 lbs 235.00-262.50. Slaughter nannies/does 60-150 lbs 110.00-175.00. Slaughter bucks/billies Selection 1-2 65-180 lbs 165.00-210.00. Wethers Selection 1-2 55-80 lbs 225.00-275.00. Replacement nannies/does Selection 1-2 1-2 yrs 60-90 lbs exp 150.00-207.50; 2-4 yrs 80-100 lbs exp 165.00-175.00; 100-135 lbs exp 180.00-270.00. Families Selection 1-2 2-4 yrs 80-85 lbs exp with baby to 20 lb kids 255.00-300.00 per family.

Explanatory Notes: Stage - Represents estimated lambing/kidding period (Open, Exp=exposed, Bred, Fall = Sep-Nov, Win = Dec-Feb, Spr = Mar-May, Sum=Jun-Aug; w/s = woolled and shorn; /hd= per head; All price CWT unless otherwise noted.

MISSOURI DROUGHT MONITOR 01/19/2023

Date	None	D0	D1	D2	D3	D4
01/17/23	40.18	49.08	9.13	1.61	0	0
01/10/23	41.44	49.68	7.27	1.61	0	0
01/18/22	62.14	37.43	0.43	0	0	0

Reflects percentage of Missouri impacted by drought.

D0 Abnormally Dry; D1 Moderate Drought; D2 Severe Drought; D3 Extreme Drought; D4 Exceptional Drought

NATIONAL DIRECT DELIVERED FEEDER PIG REPORT

01/20/2023 Receipts: 99,513 Week ago: 117,092 Year Ago: 79,538

Early weaned pigs 1.00/ head lower. All feeder pigs 8.00/head higher.

Early weaned pigs 10-12 lbs. basis:

Cash 38,801 head 57.00-75.00, weighted average 67.53

Formula 44,447 head 49.37-77.00, weighted average 60.96

Feeder pigs 40 pounds basis:

Cash 16,265 head 77.00-99.00, weighted average 89.97

NATIONAL DAILY DIRECT PRIOR DAY HOG REPORTS FOR 01/20/23

BARROWS AND GILTS (Carcass Basis): 9,629 head
Base Carcass Price 65.00-74.00, weighted average 70.41

SOWS (Live Basis): 7,361 head
300-500 lbs. 16.00-50.50
Over 500 lbs. 32.00-51.50

MISSOURI WEEKLY DIRECT SLAUGHTER CATTLE REPORT 01/20/2023

Weekly Receipts: 0 Week ago: 360 Year ago: 320

Trade as of Friday morning: trade inactive as producers are passing lower bids.

LIVE STEERS & HEIFERS: No sales reported
DRESSED STEERS & HEIFERS: No sales reported

GRADE AND WEIGHT (Grid): No sales reported

Click here for the current [National Crop Progress](#)

Click here for the current [Missouri Crop Progress](#)