

# Weekly Market Summary

Published by:  
**Missouri Department of Agriculture**  
**Ag Business Development Division**  
**Market News Program**



Chris Chinn, Director  
 Jill Wood, Division Director  
 Tony Hancock, Editor  
<http://www.ams.usda.gov/marketnews.htm>  
[agmarketnews.mo.gov](http://agmarketnews.mo.gov)

Michael L. Parson, Governor

Volume XLIII, Number 4 ♦ P.O. Box 630, Jefferson City, MO 65102 ♦ (573) 751-4211 ♦ Monday, January 30, 2023

## MISSOURI WEEKLY FEEDER CATTLE WEIGHTED AVERAGE REPORT

Receipts: 14,126 Week ago: 36,894 Year ago: 35,653

Steers and Heifers Medium and Large 1—Weighted average weights and prices

STEERS: Medium and Large 1

332 lbs. 218.55	523 lbs. 213.71	727 lbs. 182.02
381 lbs. 233.72	578 lbs. 205.51	775 lbs. 179.48
423 lbs. 224.02	623 lbs. 196.39	831 lbs. 171.97
479 lbs. 220.79	677 lbs. 189.18	887 lbs. 174.00

HEIFERS: Medium and Large 1

379 lbs. 188.01	570 lbs. 181.39	780 lbs. 168.02
428 lbs. 189.32	623 lbs. 172.02	874 lbs. 153.91
475 lbs. 187.73	674 lbs. 171.77	
528 lbs. 180.34	727 lbs. 170.96	

### Missouri Steer (Heifer) Stocker Formula for 01/30/2023

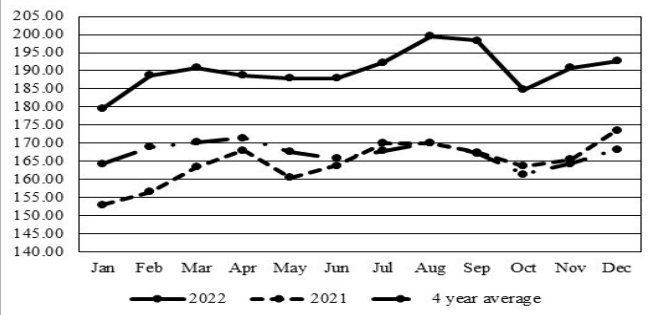
Monday's Missouri Stocker Formula consists of **3310 (3016)** head with a weighted average weight of **547.53 (525.80)** lbs. and a price value of **202.82 (176.52)**, 1.52 higher (1.76 higher) than last week.

This a rolling seven day calculated weighted value which combines all Feeder Steers reported by MDA/USDA Market News Service weighing from 400-649 lbs. in the Medium and Large 1 and Medium and Large 1-2 frame and muscle classifications, including all comment cattle except Brahman X. Heifer values are in parentheses.

### Missouri Weekly Cattle Auction Summary 01/30/2023

Compared to last week, a light supply of feeders sold with firm to higher undertones on limited test. Auctions were interrupted by winter weather this week making transporting cattle difficult to impossible. Several inches of heavy wet snow fell which measured in the low double digits in the hardest hit areas. Some sales cancelled altogether with the rest seeing light runs. Cold temperatures followed and set in over the weekend. Freezing rain made for many icy roads Sunday afternoon and evening which could cause some problems for auctions starting out this week. The industry is currently awaiting the much anticipated semiannual cattle inventory due to be released on Tuesday, where we will receive the official numbers of just how much the cattle herd has shrink in the last year. Boxed beef cutouts continued their decline this week, choice closed at 267.76, down 3.96 and select closed at 250.54, down 5.89 compared to last Friday. Negotiated feedlot sales as of Friday afternoon was reported at a dismal 43k head. Sales were steady to lower, live sales were reported mostly from 152.00-157.00, dressed sales mostly at 248.00. The Missouri Stocker Formula consist of 3310 head with a weighted average weight of 547.53 lbs. and a price value of 202.82, 1.52 higher than last week. The steer/heifer spread is 26.30.

### Missouri Stocker Formula - Steers

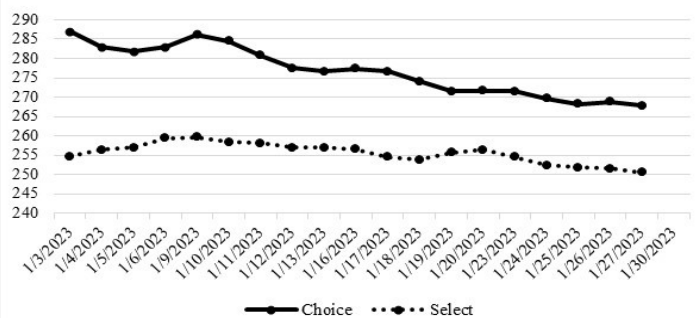


\*Graph is updated the first Monday of each month.

### NATIONAL BOXED BEEF CUTOFF/BOXED BEEF CUTS

<u>DATE</u>	<u>CHOICE</u>	<u>SELECT</u>	<u>TOTAL LOADS</u>
01/23	271.44	254.49	107
01/24	269.64	252.39	138
01/25	268.28	251.80	137
01/26	268.75	251.48	120
01/27	267.76	250.54	111
<b>5 Day Simple Average</b>	269.17	252.14	

### Boxed Beef Cuts January 2023



\*Axis value ranges may be updated to reflect data points.

### WEEKLY LIVESTOCK SLAUGHTER 01/28/23

	<u>CATTLE</u>	<u>HOGS</u>	<u>SHEEP</u>
Week to Date:	659,000	2,536,000	33,000
Last Week:	646,000	2,531,000	32,000
Last Year:	655,000	2,530,000	29,000

The Weekly Market Summary, as well as historical summaries, are available on our website <https://agmarketnews.mo.gov/summaries>  
 Market News Hotline: 1-573-522-9244

**SOUTHWEST MISSOURI WEEKLY SUMMARY**

(Joplin and Springfield)

Receipts: 3511 Week ago: 14,470 Year ago: 12,563

Compared to last week, steers and heifers steady. Slaughter cows and bulls mostly 4.00 to 6.00 higher.

**FEEDER STEERS:**  
Medium and Large 1

300-400 lbs.	220.00-255.00
400-500 lbs.	215.00-239.00
500-600 lbs.	193.00-218.00
600-700 lbs.	181.00-196.00
Pkg 731 lbs.	176.50
800-850 lbs.	170.00-173.50

**FEEDER HEIFERS:**  
Medium and Large 1

13 hd 359 lbs.	191.00
400-500 lbs.	180.00-190.00
500-600 lbs.	172.00-185.00
600-700 lbs.	164.00-174.00
70 hd 797 lbs.	165.00
Pkg 864 lbs.	157.00

**FEEDER HOLSTEIN STEERS**  
Large 3

Scarce Scarce

**SLAUGHTER COWS:** Breaking and Boning (70-85% lean) 68.00-85.50, high dressing 78.00-92.00; low dressing 62.00-70.50. Lean (85-90%) 56.00-72.00

**SLAUGHTER BULLS:** Yield Grade 1-2 1215-2325 lbs. 90.00-103.00; high dressing 104.00-115.50; low dressing 73.50-94.00

**BRED COWS:** Medium and Large 1-2 2-8 yrs 1065-1470 lbs 2nd to 3rd stage 1010.00-1400.00 per head

**COW & CALF PAIRS:** Medium 1-2 2-8 yrs 1040-1240 lbs with 150-300 lb calves 1350.00-1850.00; 2-8 yrs 1080-1230 lbs rebred 1st stage with over 300 lb calves 1675.00-1900.00 per pair

**BRED HEIFERS:** Medium and Large 1-2 few 2-4 yrs 935-1015 lbs 2nd to 3rd stage 1025.00-1225.00 per head

**SOUTH CENTRAL MISSOURI WEEKLY SUMMARY**

(West Plains, Phillipsburg)

Receipts: 1906 Week ago: 5160 Year Ago: 5696

Compared to last week, steer and heifer calves steady to 4.00 higher. Slaughter cows and bulls 4.00 to 6.00 higher.

**FEEDER STEERS:**  
Medium and Large 1

300-400 lbs.	215.00-222.50
400-500 lbs.	209.00-218.00
550-600 lbs.	195.00-216.00
600-700 lbs.	175.00-189.00
700-800 lbs.	171.00-176.00
59 hd 835 lbs.	171.00

**FEEDER HEIFERS:**  
Medium and Large 1

350-400 lbs.	180.00-188.00
450-500 lbs.	177.00-187.50
500-600 lbs.	168.00-185.00
600-650 lbs.	163.00-167.00

**FEEDER HOLSTEIN STEERS**  
Large 3

Scarce Scarce

**SLAUGHTER COWS:** Breaking and Boning (70-85% lean) 73.00-85.00, high dressing 83.00-93.00; low dressing 66.00-71.00. Lean (85-90%) 60.00-72.00

**SLAUGHTER BULLS:** Yield Grade 1-2 1265-2025 lbs. 97.00-108.00; high dressing 109.00-115.00; low dressing 73.00-97.00

**BRED COWS:** Medium and Large 1-2 2-8 yrs 1020-1442 lbs 2nd to 3rd stage 1100.00-1550.00, 1st stage 1150.00-1325.00; over 8 yrs 5 pairs 1199 lbs 2nd to 3rd stage 1050.00 per head

**COW & CALF PAIRS:** Medium and Large 2 2-8 yrs 1038-1287 lbs with 150-300 lb calves 1275.00-1400.00 per pair

**BRED HEIFERS:** Medium and Large 1-2 750-825 lbs 1st to 3rd stage 700.00-900.00 per head

**WEST CENTRAL MISSOURI WEEKLY SUMMARY**

(Kingsville, Windsor, Butler)

Receipts: 2544 Week ago: 7772 Year ago: 7579

Compared to last week, a much lighter test of steers and heifers traded uneven from 5.00 lower to 5.00 higher. Slaughter cows 2.00 to 8.00 higher.

**FEEDER STEERS:**  
Medium and Large 1

400-500 lbs.	222.00-234.00
500-600 lbs.	197.00-227.50
600-700 lbs.	183.75-200.00
700-800 lbs.	174.00-187.75
800-900 lbs.	171.25-176.50

**FEEDER HEIFERS:**  
Medium and Large 1

400-500 lbs.	182.00-202.50
500-600 lbs.	173.00-186.00
600-700 lbs.	170.00-177.50
Pkg 892 lbs.	154.00
Pkg 959 lbs.	158.00

**SLAUGHTER BULLS:** Yield Grade 1-2 1275-1930 lbs 92.00-104.00; high dressing couple 108.00-110.00; low dressing 83.50-91.50

**SLAUGHTER COWS:** Breaking and Boning (70-85% lean) 74.00-91.50, high dressing 84.00-99.00; low dressing 64.00-76.00. Lean (85-90%) 64.00-77.00

**BRED COWS:** Medium and Large 1-2 5-8 yrs 1280-1320 lbs 2nd to 3rd stage 1000.00-1200.00 per head

**COW & CALF PAIRS:** Medium and Large 1-2 5-8 yrs 1000-1400 lbs with 150-300 lb calves 1125.00-1560.00 per pair

**NORTHEAST MISSOURI WEEKLY SUMMARY**

(Bowling Green, Kingdom City, Palmyra)

Receipts: 3870 Week ago: 4959 Year ago: 6432

Compared to last week, steers under 650 lbs steady to 5.00 lower, over 650 lbs steady to firm. Heifers under 650 lbs steady, 650-750 lbs steady to 5.00 lower. Slaughter cows steady to 3.00 higher.

**FEEDER STEERS:**  
Medium and Large 1

400-500 lbs.	205.00-227.00
500-600 lbs.	196.00-219.50
600-700 lbs.	175.75-203.00
700-800 lbs.	175.50-182.50
800-850 lbs.	168.75-174.00

**FEEDER HEIFERS:**  
Medium and Large 1

300-400 lbs.	197.00-204.00
400-500 lbs.	183.50-202.50
500-600 lbs.	180.00-196.00
600-700 lbs.	167.00-183.25
700-800 lbs.	161.75-172.00

**SLAUGHTER BULLS:** Yield Grade 1-2 1310-2290 lbs 92.00-108.00; high dressing 101.00-117.00; low dressing 80.00-98.00

**SLAUGHTER COWS:** Breaking and Boning, (70-85% lean) 72.00-84.00; high dressing 78.50-92.00; low dressing 62.00-75.00. Lean (85-90%) 65.00-73.00

**SLAUGHTER STEERS:** Choice and Prime 2-4 165.00. Choice 2-3 158.00-162.50. Choice 4-5 heavy 144.00. Select and Choice 2-3 151.00-152.50. Select 2-3 143.50-149.50.

**BRED COWS:** Medium and Large 1-2 2-8 yrs 1080-1540 lbs 3rd stage 1500.00-1600.00; over 8 yrs 1194-1570 lbs 3rd stage 960-1200.00 per head

**SLAUGHTER HEIFERS:** Choice 2-3 152.50-155.00. Select 1-2 140.00-150.00

**COW/CALF PAIRS:** Scarce

**NORTH CENTRAL MISSOURI WEEKLY SUMMARY**

(Macon, Unionville, Green City, New Cambria)

Receipts: 3963 Week ago: 3775 Year ago: 4728

Compared to last week, steers and heifers unevenly steady to 3.00 higher, except some heifers 650-750 lbs 2.00 to 5.00 lower early week. Slaughter cows unevenly steady.

\*Some sale barns on a bi-weekly schedule and may not have a sale each week.

**FEEDER STEERS:**  
Medium and Large 1

400-500 lbs.	210.00-251.00
500-600 lbs.	193.50-225.00
600-700 lbs.	184.50-210.00
700-800 lbs.	175.50-188.85

**FEEDER HEIFERS:**  
Medium and Large 1

400-500 lbs.	179.50-199.75
500-600 lbs.	169.00-192.00
650-700 lbs.	168.50-182.00
700-800 lbs.	159.75-172.75

**SLAUGHTER BULLS:** Yield Grade 1-2 couple 1480-1695 lbs 89.50-98.00

**SLAUGHTER COWS:** Breaking and Boning, (70-85% lean) 62.00-80.50; high dressing 83.50-85.00; low dressing 62.00-70.00. Lean (85-90%) 59.50-72.00

**BRED COWS:** Medium and Large 1 2-4 yrs 1175-1375 lbs 3rd stage 2000.00-2400.00, 2-8 yrs 1300-1400 lbs 3rd stage 1750.00-2150.00 per head.

**BRED HEIFERS:** Medium and Large 1 <2 yrs 1125-1200 lbs 3rd stage 2075.00-2100.00 per head.

**SOUTHEAST MISSOURI WEEKLY SUMMARY**

(Jackson and Farmington)

Receipts: 309 Week ago: 1732 Year ago: 1213

Too few feeders for a market comparison. Slaughter cows 3.00 higher. Slaughter bulls steady.

**FEEDER STEERS:**  
Medium and Large 1

450-500 lbs. 180.00-203.00  
Pkg 598 lbs. 172.00  
Pkg 600 lbs. 169.00  
Pkg 745 lbs. 160.00

**FEEDER HEIFERS:**  
Medium and Large 1

350-400 lbs. 170.00-182.50  
400-500 lbs. 165.00-186.00  
600-700 lbs. 145.00-161.00

**SLAUGHTER BULLS:** Yield  
Grade 1-2 1590-2072 lbs. 80.00-93.00

**SLAUGHTER COWS:** Breaking and Boning (75-85% lean) 59.00-69.00; high dressing 70.00-80.00. Lean (85-90% lean) few 54.00-55.00

**BRED COWS:** Medium and Large 2 2-8 yrs few 1020-1165 lbs 2nd to 3rd stage 850.00-900.00 per head

**COW & CALF PAIRS:** Scarce

**EAST CENTRAL MISSOURI WEEKLY SUMMARY**

(Cuba, Vienna)

Receipts: 352 Week ago: 2583 Year ago: 2519

Too few feeders for a market comparison. Slaughter cows 3.00 to 5.00 higher.

**FEEDER STEERS:**  
Medium and Large 1

500-550 lbs. 198.00-209.00  
600-650 lbs. 182.50-192.00  
Pkg 668 lbs. 172.50  
700-800 lbs. 165.00-171.50

**FEEDER HEIFERS:**  
Medium and Large 1

400-500 lbs. 180.00-184.00  
500-600 lbs. 175.00-181.00  
600-700 lbs. 160.00-165.00

**SLAUGHTER BULLS:** Yield  
Grade 1-2 1470-1950 lbs 98.00-109.00; few high dressing 109.00-115.00

**SLAUGHTER COWS:** Breaking and Boning, (70-85% lean) 75.50-82.50; high dressing 82.00-87.00; low dressing 64.00-75.00. Lean (85-90%) 67.50-74.00

**BRED COWS:** Scarce

**COW & CALF PAIRS:** Scarce

**NORTHWEST MISSOURI WEEKLY SUMMARY**

(Tina)

Receipts: 1776 Week ago: 1308

Compared to last week, steers mostly steady. Heifers 2.00 to 4.00 higher. Slaughter cattle 2.00 to 4.00 higher.

**FEEDER STEERS:**  
Medium and Large 1

400-500 lbs. 206.00-222.00  
500-600 lbs. 198.00-223.50  
600-700 lbs. 180.00-200.50  
700-800 lbs. 176.25-182.25  
800-900 lbs. 162.00-167.00

**FEEDER HEIFERS:**  
Medium and Large 1

400-500 lbs. 177.00-192.00  
11 hd 541 lbs. 182.00  
600-700 lbs. 163.50-177.75  
700-750 lbs. 166.00-171.25

**SLAUGHTER BULLS:** Yield  
Grade 1-2 couple 1285-1905 lbs 91.00-99.50

**SLAUGHTER COWS:** Breaking and Boning, (70-85% lean) 63.50-78.50; high dressing 71.00-88.00 Lean (85-90%) couple 57.00-62.00

**BRED COWS:** Medium and Large 1 2/8 yrs 1075-1450 lbs 2nd and 3rd stage 1600.00-1900.00, Bred Heifers Medium and Large 1 <2 yrs 2nd and 3rd stage 2100.00-2325.00 per head

**COW & CALF PAIRS:** Medium and Large 1 2-8 yrs 1100-1300 lbs calves over 300 lbs bred back 2350.00-2700.00 per pair

**AFTERNOON NATIONAL SLAUGHTER CATTLE REVIEW**

01/27/2023

So far for Friday in the Southern Plains and Nebraska negotiated cash trade has mostly inactive on light demand. In the Western Cornbelt negotiated cash trade has been limited on light demand. Not enough purchases in any region for a full market trend. In Nebraska the last reported dressed purchase market was Thursday at 248.00, and last week live purchases traded at 155.00. In the Western Cornbelt the last reported market was Thursday with live and dressed purchases from 152.00-157.00 and at 248.00, respectively. Last week in the Southern Plains live purchases traded at 155.00.

**Negotiated Cash Sales:**

<b>Confirmed:</b>	5,599	<b>Week Ago:</b>	13,966	<b>Year Ago:</b>	2,904
<b>Week to date:</b>	43,287	<b>Week Ago:</b>	58,630	<b>Year Ago:</b>	77,548

<u>Live Basis</u>	<u>Steers</u>	<u>Heifers</u>
<b>Over 80% Choice</b>	155.00-156.00, avg 155.65	156.00
<b>65-80% Choice</b>	-	156.00
<b>35-65% Choice</b>	-	-
<b>0-35% Choice</b>	-	-
<b>Total All Grades</b>	155.00-156.00, avg 155.65	156.00
<u>Dressed Basis</u>		
<b>Over 80% Choice</b>	248.00	-
<b>65-80% Choice</b>	-	-
<b>35-65% Choice</b>	-	-
<b>0-35% Choice</b>	-	-
<b>Total All Grades</b>	248.00	-

<u>All Beef Type Steers/Heifers</u>	<u>Head</u>	<u>Avg Wt</u>	<u>Price Range</u>	<u>Wtd Avg</u>
Live FOB	3347	1399.50	153.00-158.00	155.10
Live Del	1380	1504.10	155.00-160.00	158.75
Dressed Del	542	892.70	246.00-248.00	247.62
Dressed FOB	264	961.00	247.00	247.00

**WEEKLY COMMODITY FUTURES TRENDS**

Compared to last week, Live Cattle Feb 0.10 higher, others 0.73 to 1.20 higher, Lean Hogs Feb 1.95 lower, others 0.73 to 1.12 higher, Feeder Cattle 1.15 to 2.50 higher.

**Daily Futures Closes**

	Mon.	Tues.	Wed.	Thu.	Fri.
<b>Cattle</b>					
Feb	157.47	157.85	157.60	156.72	156.72
Apr	160.55	161.30	161.55	160.52	160.82
Jun	157.30	157.85	158.20	157.37	157.77
Aug	157.60	158.05	158.17	157.55	157.75
Oct	162.17	162.45	162.65	162.02	162.15
<b>Lean Hogs</b>					
Feb	77.57	77.10	76.80	77.02	75.87
Apr	85.45	85.37	85.32	87.00	86.45
May	93.40	93.40	93.47	94.85	94.92
Jun	102.35	101.67	101.80	103.05	103.40
Jul	103.72	102.82	102.95	104.17	104.87
<b>Fdr Cat</b>					
Jan	179.17	178.95	179.40	179.57	—
Mar	183.27	183.60	183.75	182.85	183.47
Apr	187.92	187.92	188.35	187.00	187.55
May	192.25	191.97	192.57	191.27	191.85
Aug	204.80	204.72	205.42	204.67	205.10
<b>Milk</b>					
Jan	19.48	19.43	19.43	19.48	19.48
Feb	18.67	18.61	18.21	18.32	18.06
Mar	18.28	18.21	17.95	18.16	18.01

**WEEKLY COMMODITY GRAIN FUTURES TRENDS**

Compared to last week, Soybeans steady to 0.03 higher, Wheat 0.04 to 0.09 higher, Corn nearby 0.02 to 0.07 higher, Sep and Dec 0.07 to 0.08 lower, KC Wheat 0.10 to 0.21 higher, Soybean Meal 1.30 to 9.80 higher.

**Daily Grain Futures Closes**

	Mon.	Tues.	Wed.	Thu.	Fri.
<b>Soybeans</b>					
Mar	1490 1/4	1488 1/2	1502 1/2	1523 1/2	1509 1/2
May	1487 1/4	1486 1/2	1496 1/2	1514 3/4	1504 1/2
Jul	1480	1479 3/4	1488 1/4	1504 1/2	1496
Aug	1440 1/2	1440 1/2	1449 1/4	1462 1/4	1456 3/4
Sep	1372 3/4	1372	1379	1388 1/4	1385 3/4
<b>Wheat</b>					
Mar	720	734 1/2	741 1/4	752 1/2	750
May	728	742 1/4	749	760 1/2	758 3/4
Jul	730 1/2	744 1/2	750 1/2	762 1/2	760
Sep	739	752 1/2	756 3/4	769 1/4	766 3/4
Dec	753 3/4	766 1/2	770 1/4	782	779 1/4
<b>Corn</b>					
Mar	666 1/4	677	674 3/4	682 1/2	683
May	665	675 1/4	673 1/4	680	680
Jul	654 1/4	664 3/4	663 1/4	668	665 3/4
Sep	601 3/4	608	604 1/2	607	603 1/2
Dec	586	591 1/4	588	590	587 1/4
<b>KC Wheat</b>					
Mar	819	833 3/4	843 1/4	864 3/4	869 1/4
May	814	828 1/2	838	857 1/2	862 1/2
Jul	808 1/4	822 1/4	831	848 3/4	853 1/4
Sep	811	824	831 1/2	848 1/4	851 1/4
Dec	817 3/4	830 1/4	836	852 1/2	854 1/4
<b>SB Meal</b>					
Mar	461.90	459.80	465.50	477.10	473.50
May	447.40	448.80	452.80	462.00	459.40
Jul	438.70	441.80	444.90	452.00	449.50
Aug	424.70	428.00	430.10	435.10	432.90
Sep	408.30	410.70	412.40	415.40	413.70

**MISSOURI GRAIN WEEKLY TRENDS**

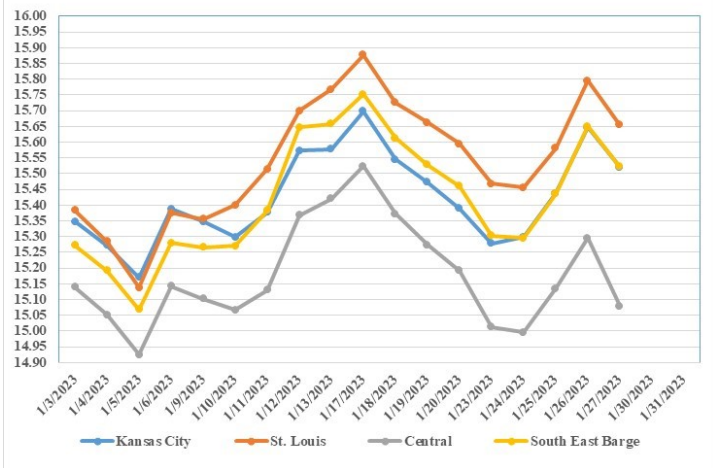
Compared to last week, Soybeans 0.03 to 0.18 higher, Wheat 0.09 higher, Corn 0.02 to 0.17 higher, Sorghum 0.07 higher.

Area	#1 Soybeans	#2 Soft Wheat	#2 Corn	#2 Grain Sorghum
<b>Kansas City</b>				
Friday**	15.22-15.52	7.72	7.16-7.26	6.81
Monday	15.05-15.35	7.50	7.06-7.18	6.71
Tuesday	15.19-15.34	7.65	7.17-7.29	6.82
Wednesday	15.33-15.48	7.71	7.10-7.27	6.80
Thursday	15.54-15.69	7.83	7.18-7.35	6.88
Friday	15.40-15.60	7.80	7.18-7.35	6.88
<b>St. Louis</b>				
Friday**	15.57-15.63	7.27-7.77	6.94-6.96	7.11
Monday	15.46-15.47	7.05-7.55	6.88-6.89	7.01
Tuesday	15.46	7.20-7.70	7.00	7.12-7.22
Wednesday	15.57-15.60	7.26-7.76	7.00-7.01	7.10-7.20
Thursday	15.79-15.81	7.38-7.88	7.08-7.09	7.18-7.28
Friday	15.65-15.67	7.35-7.85	7.11	7.18-7.28
<b>Central</b>				
Friday**	15.15-15.22	7.17-7.22	7.06-7.11	—
Monday	14.98-15.05	6.95-7.00	6.96-7.01	—
Tuesday	14.97-15.04	7.10-7.15	7.07-7.12	—
Wednesday	15.11-15.18	7.16-7.21	7.05-7.10	—
Thursday	15.24-15.34	7.28-7.33	7.13-7.18	—
Friday	15.05-15.10	7.25-7.30	7.13-7.18	—
<b>S.E. MO</b>				
Friday**	15.45-15.47	—	6.87-6.96	—
Monday	15.28-15.32	—	6.77-6.86	—
Tuesday	15.27-15.34	—	6.88-6.97	—
Wednesday	15.39-15.48	—	6.85-7.00	—
Thursday	15.60-15.69	—	6.93-7.08	—
Friday	15.46-15.60	—	6.93-7.08	—

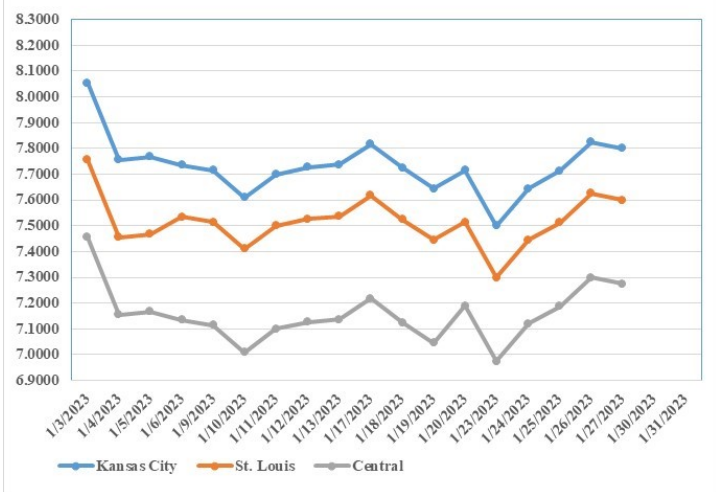
(PRICES PER BUSHEL) \*NEW CROP \*\*PREVIOUS WEEK'S PRICES  
\*Bids calculated using Kansas City, St. Louis, and St. Joseph bids

**MONTHLY GRAIN CROP**

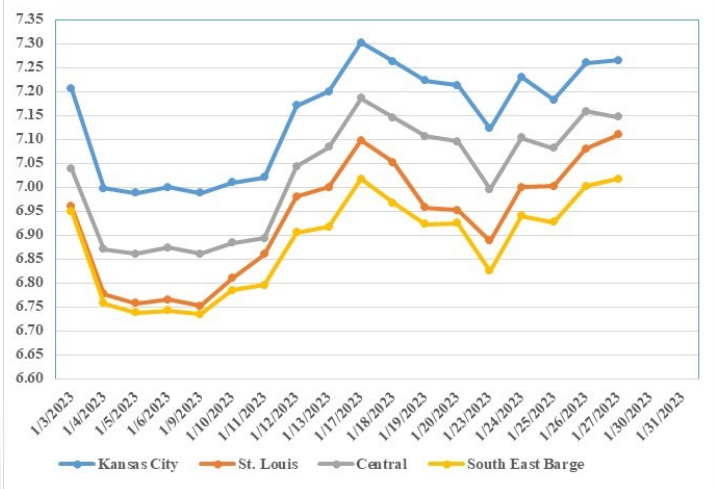
January 2023 Soybean Bids



January 2023 Wheat Bids



January 2023 Corn Bids



\*Axis value ranges may be updated to reflect data points.

**WHOLESALE FEEDSTUFFS PRICES 01/27/2023**  
(DOLLARS PER TON-BULK BASIS)

Area	Soybean Hulls Pellets	Soybean Meal 46.5-48%	Corn Gluten Pellets 21%	Wheat Middlings
Kansas City	250.00	482.00	312.67	267.00
St. Louis	n/a	n/a	297.50	236.67

### MILK PRODUCTION 01/25/23

**Milk production** in the 24 major States during December totaled 18.1 billion pounds, up 0.9 percent from December 2021. November revised production, at 17.4 billion pounds, was up 1.1 percent from November 2021. The November revision represented a decrease of 49 million pounds or 0.3 percent from last month's preliminary production estimate.

**Production per cow** in the 24 major States averaged 2,032 pounds for December, 8 pounds above December 2021.

**The number of milk cows** on farms in the 24 major States was 8.92 million head, 38,000 head more than December 2021, but 9,000 head less than November 2022.

### **October-December Milk Production up 1.0 Percent**

**Milk production** in the United States during the October - December quarter totaled 56.0 billion pounds, up 1.0 percent from the October - December quarter last year.

**The average number of milk cows** in the United States during the quarter was 9.41 million head, 4,000 head less than the July - September quarter, but 27,000 head more than the same period last year.

### COLD STORAGE 01/25/23

**Total natural cheese stocks** in refrigerated warehouses on December 31, 2022 were up 1 percent from the previous month and up slightly from December 31, 2021.

**Butter stocks** were up 8 percent from last month and up 9 percent from a year ago.

**Total frozen poultry supplies** on December 31, 2022 were up 7 percent from the previous month and up 23 percent from a year ago. Total stocks of chicken were up 2 percent from the previous month and up 25 percent from last year. Total pounds of turkey in freezers were up 35 percent from last month and up 14 percent from December 31, 2021.

**Total frozen fruit stocks** were down 5 percent from last month but up 22 percent from a year ago.

**Total frozen vegetable stocks** were down 5 percent from last month and down slightly from a year ago.

**Total red meat supplies** in freezers were up 2 percent from the previous month and up 11 percent from last year. Total pounds of beef in freezers were up 4 percent from the previous month and up 7 percent from last year. Frozen pork supplies were up 1 percent from the previous month and up 16 percent from last year. Stocks of pork bellies were up 16 percent from last month and up 66 percent from last year.

### MISSOURI WEEKLY HAY SUMMARY 01/26/2023

Snow fell over most of the state mid-week. Areas south of I-44 reported the heaviest amounts with 5-8 inches being pretty common and a few up to a foot of heavy wet snow, which made getting around to feed difficult. Despite 60 percent of the state still showing on the latest drought monitor, mud is a pretty common theme currently as the surface is far from dry. A bit of good news came as the latest report from DTN listed most fertilizer prices at their lowest levels since Oct of 2021. The supply of hay is light, demand is moderate and prices are fully steady. The Missouri Department of Agriculture has a hay directory visit <http://mda.mo.gov/abd/haydirectory/> for listings of hay <http://agebb.missouri.edu/haylst/>

Alfalfa - Supreme 250.00-300.00, small square 10.00-15.00 per bale

Alfalfa - Premium 180.00-250.00

Alfalfa - Good 150.00-180.00, small square 5.00-9.00 per bale

Alfalfa - Fair 125.00-150.00

Alfalfa/grass mix - Good/Premium small square 5.00-9.00 per bale

Mixed grass - Good/Premium 125.00-175.00

Mixed grass - Fair/Good 100.00-150.00, small square 5.00-8.00 per bale

Mixed grass - Fair 50.00-85.00 per large round bale

Con stalk - 35.00 per round bale

Wheat straw - 4.00-7.00 per small square bale

Please Note: The above volumes (tonnage, acres, and bales) listed on this USDA LPGMN report are for confirmed trades only, it does not include estimated volume (tonnage) for bids or offers to the trade.

The current hay directory can be found at: [Hay Directory](#)

List your hay for sale at: [Hay Listing Online Form](#)

Explanation of Hay Quality Guidelines: [Hay Quality Designation Guidelines](#)

Glossary of Terms: [Livestock, Poultry, and Grain Hay Terms](#)

### MISSOURI WEEKLY SHEEP/GOAT AUCTION SUMMARY

01/30/2023

Receipts: 1901 Week Ago: 1358 Last Year: 676

**SHEEP:** Feeder Lambs: Small and Medium 1-2 hair 30-40 lbs 220.00-237.00; 40-50 lbs 270.00-290.00. Slaughter lambs Choice and Prime 1-3 hair 50-70 lbs 235.00-290.00; 70-80 lbs 189.00-250.00; 80-95 lbs 175.00-225.00. Choice 1-3 hair 50-70 lbs 210.00-240.00; 70-85 lbs 175.00-220.00. Good 1-2 hair pkg 103 lbs 127.50. Slaughter ewes Utility and Good 1-3 pkg 178 lbs 91.00. Good 2-3 hair 14 hd 86 lbs 142.50. Utility and Good 1-3 100-135 lbs 100.00-122.50. Utility and Good 1-3 70-80 lbs 93.00-95.00 per head; 100-140 lbs 110.00-132.50 per head. Slaughter bucks 1-2 hair pkg 140 lbs 107.00. Replacement ewes Small and Medium 1-2 yearling pkg 50 lbs open 290.00; 2-4 yrs 14 hd 143 lbs win 160.00. Small and Medium 1-2 hair yearlings 65-90 lbs exp 150.00-185.00/hd; 1-2 yrs 90-110 lbs exp 140.00-175.00/hd; 2-4 yrs 115-120 exp 135.00-190.00/hd; 2-4 yrs 120-140 lbs win 145.00-170.00/hd; 4-6 yrs 13 hd 126 lbs spr 150.00/hd. Families Small and Medium 1-2 2-4 yrs 90-110 lbs fwith baby to 20 lb lambs 200.00-390.00; 4-6 yrs 100-105 lbs with baby to 20 lb lambs 160.00-170.00/family.

**GOATS:** Feeder kids Selection 1 35-50 lbs 300.00-330.00. Selection 2 30-50 lbs 225.00-285.00. Wether kids Selection 3 pkg 48 lbs 150.00; pkg 40 lbs pygmies 130.00. Slaughter kids Selection 1 50-70 lbs 260.00-310.00; pkg 78 lbs 250.00. Selection 2 50-70 lbs 240.00-275.00; 70-80 lbs 235.00-255.00; 80-90 lbs 205.00-235.00. Slaughter nannies/does Selection 1-2 70-90 lbs 120.00-150.00; 90-100 lbs 146.00-170.00; 100-130 lbs 130.00-150.00. Selection 1-2 75-90 lbs 100.00-125.00/hd. Wethers Selection 1-2 pkg 82 lbs 175.00. Wether kids Selection 2 pkg 76 lbs 200.00. Replacement nannies/does Selection 1-2 1-2 yrs 80-95 lbs exp 165.00-225.00/hd; 2-4 yrs 75-105 lbs exp 175.00-200.00/hd

Explanatory Notes: Stage - Represents estimated lambing/kidding period (Open, Exp=exposed, Bred, Fall = Sep-Nov, Win = Dec-Feb, Spr = Mar-May, Sum=Jun-Aug; w/s = woolled and shorn; /hd= per head; All price CWT unless otherwise noted.

### MISSOURI DROUGHT MONITOR 01/19/2023

Date	None	D0	D1	D2	D3	D4
01/24/23	41.55	47.88	8.96	1.61	0	0
01/17/23	40.18	49.08	9.13	1.61	0	0
01/25/22	59.80	38.83	1.37	0	0	0

Reflects percentage of Missouri impacted by drought. D0 Abnormally Dry; D1 Moderate Drought; D2 Severe Drought; D3 Extreme Drought; D4 Exceptional Drought

### NATIONAL DIRECT DELIVERED FEEDER PIG REPORT

01/27/2023 Receipts: 103,203 Week ago: 99,513 Year Ago: 101,194 Early weaned pigs steady to 2.00/hd higher. All feeder pigs 2.00 to 4.00 higher.

Early weaned pigs 10-12 lbs. basis: Cash 44,557 head 57.00-77.00, weighted average 67.73. Formula 40,126 head 49.78-73.64, weighted average 58.90. Feeder pigs 40 pounds basis: Cash 16,265 head 81.00-101.00, weighted average 96.36

### NATIONAL DAILY DIRECT PRIOR DAY HOG REPORTS FOR 01/27/23

**BARROWS AND GILTS (Carcass Basis):** 7,143 head Base Carcass Price 67.00-74.50, weighted average 71.13

**SOWS (Live Basis):** 7,479 head  
300-500 lbs. 17.00-53.00  
Over 500 lbs. 31.00-55.00

### MISSOURI WEEKLY DIRECT SLAUGHTER CATTLE REPORT 01/27/2023

Weekly Receipts: 680 Week ago: 0 Year ago: 320

Trade as of Friday morning: trade is moderate with flat dressed sales ranging 246.00-248.00 and grid dressed sales steady with last week's bid at 256.00.

**LIVE STEERS & HEIFERS:** No sales reported  
**DRESSED STEERS & HEIFERS:** 11 pot loads Thu and Fri flat 246.00-248.00

**GRADE AND WEIGHT (Grid):** 6 loads Thu and Fri 256.00

Click here for the current [National Crop Progress](#)  
Click here for the current [Missouri Crop Progress](#)