

Weekly Market Summary

Published by:
Missouri Department of Agriculture
Ag Business Development Division
Market News Program



Chris Chinn, Director
 Jill Wood, Division Director
 Tony Hancock, Editor
<http://www.ams.usda.gov/marketnews.htm>
<http://www.ams.usda.gov/marketnews.htm>

Michael L. Parson, Governor

Volume XLIII, Number 5 ♦ P.O. Box 630, Jefferson City, MO 65102 ♦ (573) 751-4211 ♦ Monday, February 6, 2023

MISSOURI WEEKLY FEEDER CATTLE WEIGHTED AVERAGE REPORT

Receipts: 21,628 Week ago: 14,126 Year ago: 23,833

Steers and Heifers Medium and Large 1—Weighted average weights and prices

STEERS: Medium and Large 1

332 lbs. 233.41	526 lbs. 228.34	720 lbs. 188.71	908 lbs. 173.22
375 lbs. 230.14	576 lbs. 215.19	774 lbs. 182.51	
430 lbs. 237.88	625 lbs. 206.57	821 lbs. 176.31	
479 lbs. 234.47	669 lbs. 194.15	876 lbs. 177.97	

HEIFERS: Medium and Large 1

332 lbs. 205.99	525 lbs. 193.86	725 lbs. 172.59	930 lbs. 152.21
373 lbs. 201.07	573 lbs. 189.36	782 lbs. 168.87	
431 lbs. 203.00	617 lbs. 182.13	813 lbs. 160.23	
476 lbs. 197.35	672 lbs. 173.87	853 lbs. 157.00	

Missouri Steer (Heifer) Stocker Formula for 02/06/2023

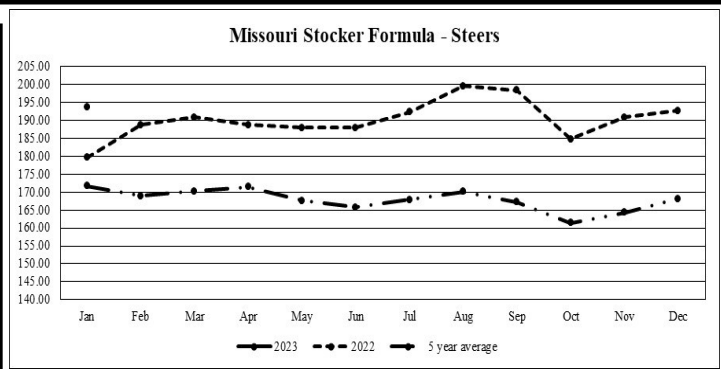
Monday's Missouri Stocker Formula consists of **5114 (4793)** head with a weighted average weight of **552.94 (535.80)** lbs. and a price value of **214.87 (187.68)**, 12.05 higher (11.16 higher) than last week.

This a rolling seven day calculated weighted value which combines all Feeder Steers reported by MDA/USDA Market News Service weighing from 400-649 lbs. in the Medium and Large 1 and Medium and Large 1-2 frame and muscle classifications, including all comment cattle except Brahman X. Heifer values are in parentheses.

Missouri Weekly Cattle Auction Summary 02/06/2023

Compared to last week, feeders under 700 lbs. sold 10.00 to 15.00 higher, weights over 700 lbs. mostly 5.00 to 7.00 higher. The supply of feeders was moderate and demand was good to very good. The week started off with more weather in the south part of the state interfering with transporting cattle and limiting offerings early week. Northern parts of the state missed most of the weather and were only limited by weather in areas which might receive cattle, but as the week progressed states that had been snowed in were starting to dig out. Mid-week, the industry got conformation of what was already known with the release of the Cattle Inventory report. Nationwide, beef cows that have calved was down 4 percent, with nine out of the top ten states for momma cows all seeing declines, Oklahoma having the largest percentage loss. Missouri did maintain the ranking of third largest state for beef cows that have calved. The conformation of the much lower numbers nationwide provided some significant strength to the market and prices at auction barns by late week were on fire with many prices not seen since the record levels set back in 2014-15. A few of notable sales included 41 head of 570 lb. steers at Kingsville Livestock Auction which sold at 228.50, 28 head of 618 lb. steers at Green City Livestock Market which sold at 219.00 and another 30 head of steers averaging 703 lbs. which sold for 199.00, and finally 57 head of steers with an average of 866 lbs. which sold early in the week at Callaway Livestock Center for 181.25. Those were not necessarily the highest prices seen around the state either. Boxed beef cutouts were mixed for the week. Choice continued to trend lower and closed the week at 264.74, down 3.02 and select closed at 251.61, up 1.07 compared to last Friday. Negotiated feedlot sales as of Friday afternoon totaled just shy of 20k head. Managers dug in deep and held out wanting more money. Sales reported late in the week were firm live sales were reported 158.00-162.00 and dressed sales 248.00-250.00. Sales were limited as of the last report and it is likely more trade took place after business. The Missouri Stocker Formula consist of 5114 head with a weighted average weight of 552.94 lbs. and a price value of 214.87, 12.05 higher than last week. The steer/heifer spread is 27.19.

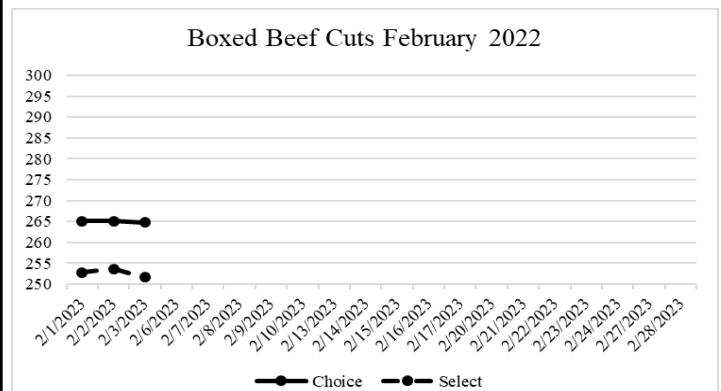
The Weekly Market Summary, as well as historical summaries, are available on our website <https://agmarketnews.mo.gov/summaries>
 Market News Hotline: 1-573-522-9244



*Graph is updated the first Monday of each month.

NATIONAL BOXED BEEF CUTOFF/BOXED BEEF CUTS

DATE	CHOICE	SELECT	TOTAL LOADS
01/30	268.10	251.52	71
01/31	266.09	252.92	118
02/01	265.07	252.78	121
02/02	265.10	253.66	150
02/03	264.74	251.61	76
5 Day Simple Average	265.82	252.50	



WEEKLY LIVESTOCK SLAUGHTER 02/04/23

	CATTLE	HOGS	SHEEP
Week to Date:	641,000	2,575,000	34,000
Last Week:	659,000	2,536,000	33,000
Last Year:	635,000	2,436,000	30,000

SOUTHWEST MISSOURI WEEKLY SUMMARY

(Joplin and Springfield)

Receipts: 4114 Week ago: 3511 Year ago: 9558

Compared to last week, steers firm to 5.00 higher, spots 10.00 higher early week and heifers steady to 4.00 higher. Slaughter cows 6.00 to 12.00 higher and Slaughter bulls mostly steady.

FEEDER STEERS:
Medium and Large 1

300-400 lbs.	230.00-247.00
400-500 lbs.	225.00-242.00
500-600 lbs.	209.00-232.00
600-700 lbs.	193.00-206.00
700-800 lbs.	181.00-189.00
800-900 lbs.	171.00-179.00
27 hd 907 lbs.	172.00

FEEDER HEIFERS:
Medium and Large 1

300-400 lbs.	184.00-195.00
400-500 lbs.	183.00-199.00
500-600 lbs.	173.00-188.00
600-700 lbs.	164.00-180.00
700-800 lbs.	165.00-172.75
800-850 lbs.	155.00-165.00
29 hd 931 lbs.	156.00

FEEDER HOLSTEIN STEERS
Large 3

Scarce Scarce

SLAUGHTER COWS: Breaking and Boning (70-85% lean) 79.00-96.00, high dressing 91.00-106.00; low dressing 65.00-80.00. Lean (85-90%) 60.00-78.00

SLAUGHTER BULLS: Yield Grade 1-2 1235-2305 lbs. 90.00-109.00; high dressing 104.00-114.00

BRED COWS: Medium and Large 1 2-8 yrs 1180-1305 lbs 2nd to 3rd stage 1400.00-1600.00. Medium and Large 1-2 2-4 yrs 1060-1140 lbs 2nd to 3rd stage 1150.00-1450.00; 2-8 yrs 1040-1352 lbs 1st to 3rd stage 900.00-1430.00; >8 yrs pkg 1140 lbs 2nd to 3rd stage 1100.00 per head

COW & CALF PAIRS: Medium 1 2-8 yrs 990-1090 lbs with <150 lb calves 1850.00-1900.00. Medium and Large 1-2 2-8 yrs 1020-1450 lbs with 150 to >300 lb calves 1425.00-1800.00; 2-8 yrs 1095-1305 lbs rebred 1st stage with >300 lb calves 1900.00 per pair

SOUTH CENTRAL MISSOURI WEEKLY SUMMARY

(West Plains, Phillipsburg)

Receipts: 3883 Week ago: 1906 Year Ago: 3173

Compared to last week, steers and heifers 5.00 to 10.00 higher, spots 15.00 higher. Slaughter cows 1.00 to 4.00 higher.

FEEDER STEERS:
Medium and Large 1

300-400 lbs.	220.00-245.00
400-500 lbs.	214.00-234.00
550-600 lbs.	200.00-234.00
600-700 lbs.	189.00-205.00
700-800 lbs.	184.00-188.25
800-850 lbs.	173.75-174.00
900-950 lbs.	167.45-169.20

FEEDER HEIFERS:
Medium and Large 1

350-400 lbs.	185.00-211.00
400-500 lbs.	181.00-213.00
500-600 lbs.	180.00-199.00
600-650 lbs.	178.75-188.75

FEEDER HOLSTEIN STEERS
Large 3

Scarce Scarce

SLAUGHTER COWS: Breaking and Boning (70-85% lean) 74.00-90.00, high dressing 85.00-95.00; low dressing 77.00-82.00. Lean (85-90%) 63.00-79.00

SLAUGHTER BULLS: Yield Grade 1-2 1225-2305 lbs. 90.50-106.00; high dressing couple 110.00-120.50; low dressing few 85.00-87.00

BRED COWS: Medium and Large 1 2-8 yrs 1058-1355 lbs 2nd to 3rd stage 1610.00-1850.00. Medium and Large 1-2 1010-1520 lbs 2nd to 3rd stage 1025.00-1610.00. 1st stage 1200.00-1500.00 per head

BRED HEIFERS: Medium and Large 1-2 <2 yrs 38 hd 1048 lbs 2nd stage 1850.00 per head

COW & CALF PAIRS: Medium and Large 1 2-8 yrs 1325-1350 lbs rebred 1st to 2nd stage with >300 lb calves 2250.00-2275.00. Medium and Large 1-2 2-8 yrs 1060-1175 lbs with <150 lb calves 1625.00-2000.00; 2-8 yrs 1100-1350 lbs rebred 1st stage with 150-300 lb calves 1900.00-2100.00 per pair

WEST CENTRAL MISSOURI WEEKLY SUMMARY

(Kingsville, Windsor, Butler)

Receipts: 7591 Week ago: 2544 Year ago: 3565

Compared to last week, steers under 650 lbs and heifers under 550 lbs 5.00 to 15.00 higher, heavier weights steady to 5.00 higher. Slaughter cows 4.00 to 10.00 higher.

FEEDER STEERS:
Medium and Large 1

400-500 lbs.	209.00-244.00
500-600 lbs.	196.50-242.50
600-700 lbs.	180.00-215.50
700-800 lbs.	172.00-193.00
800-900 lbs.	170.00-183.00
59 hd 906 lbs.	175.00

FEEDER HEIFERS:
Medium and Large 1

400-500 lbs.	185.00-214.50
500-600 lbs.	174.00-202.50
600-700 lbs.	165.50-189.00
700-800 lbs.	156.00-176.00
800-900 lbs.	152.00-157.00
900-950 lbs.	140.00-144.50

SLAUGHTER BULLS: Yield Grade 1-2 1295-2160 lbs 97.00-112.00; high dressing couple 111.00-113.50; low dressing 89.00-94.00

SLAUGHTER COWS: Breaking and Boning (70-85% lean) 80.00-96.00, high dressing 92.00-99.50; low dressing 76.00-82.00. Lean (85-90%) 64.00-86.00

BRED COWS: Medium and Large 1-2 2-8 yrs 973-1435 lbs 2nd to 3rd stage 1100.00-1425.00 per hd

COW & CALF PAIRS: Medium and Large 1-2 2-8 yrs 1285-1400 lbs with 150-300 lb calves 1300.00-1650.00 per pair

NORTHEAST MISSOURI WEEKLY SUMMARY

(Bowling Green, Kingdom City, Palmyra)

Receipts: 4378 Week ago: 3870 Year ago: 3133

Compared to last week, steers 400-700 lbs firm to 6.00 higher, over 700 lbs higher undertone. Heifers under 600 lbs steady to 3.00 higher, over 600 lbs higher undertone. Slaughter cows 5.00 to 8.00 higher, spots 10.00 higher.

FEEDER STEERS:
Medium and Large 1

400-500 lbs.	215.00-228.00
500-600 lbs.	194.00-224.00
600-700 lbs.	187.00-201.00
700-800 lbs.	178.00-191.75
800-900 lbs.	173.50-183.00

FEEDER HEIFERS:
Medium and Large 1

300-400 lbs.	195.00-225.00
400-500 lbs.	186.00-209.00
500-600 lbs.	177.50-199.50
600-700 lbs.	173.00-188.50
32 hd 746 lbs.	170.50

SLAUGHTER BULLS: Yield Grade 1-2 1260-2260 lbs 94.00-110.00; high dressing 102.00-119.00; low dressing few 87.00-99.00

SLAUGHTER COWS: Breaking and Boning, (70-85% lean) 75.00-90.00; high dressing 86.00-98.50; low dressing 65.00-85.00. Lean (85-90%) 71.50-82.00

SLAUGHTER STEERS: Choice 2 -3 157.00-160.00. Select and Choice 1-3 few 154.00-155.00.

SLAUGHTER HEIFERS: Choice 2-3 153.00-160.00.

BRED COWS: Medium and Large 1 2-4 yrs 1185-1428 lbs 2nd to 3rd stage 1725.00-2075.00, 1st stage 1675.00; 2-8 yrs 1060-1630 lbs 2nd to 3rd stage 1600.00-2300.00. Medium and Large 1-2 2-8 yrs 1083-1285 lbs 2nd to 3rd stage 1475.00-1800.00 per head

COW/CALF PAIRS: Medium and Large 1 2-8 yrs 1150-1250 lbs with 150- >300 lb calves 1935.00-2450.00; >5 yrs 1150-1300 lbs most rebred 1st stage with 150- >300 lb calves 1600.00-1750.00 per pair

NORTH CENTRAL MISSOURI WEEKLY SUMMARY

(Macon, Unionville, Green City, New Cambria)

Receipts: 4802 Week ago: 3963 Year ago: 4837

Compared to last week, steer and heifer calves sharply higher and yearlings 2.00 to 5.00 higher. Slaughter cows 1.00 to 5.00 higher.

*Some sale barns on a bi-weekly schedule and may not have a sale each week.

FEEDER STEERS:
Medium and Large 1

400-500 lbs.	224.50-264.00
500-600 lbs.	209.50-246.00
600-700 lbs.	189.00-219.00
700-800 lbs.	181.00-199.00
800-900 lbs.	168.00-179.75

FEEDER HEIFERS:
Medium and Large 1

400-500 lbs.	196.00-222.50
500-600 lbs.	185.00-210.00
600-700 lbs.	163.50-192.50
700-800 lbs.	160.25-175.50

SLAUGHTER BULLS: Yield Grade 1-2 1445-1700 lbs 98.00-108.00

SLAUGHTER COWS: Breaking and Boning, (70-85% lean) 69.00-88.00; high dressing 83.00-90.00. Lean (85-90%) 59.00-65.00

BRED COWS: Scarce

BRED HEIFERS: Scarce

SOUTHEAST MISSOURI WEEKLY SUMMARY

(Jackson and Farmington)

Receipts: 363 Week ago: 309 Year ago: 433

Due to weather, too few feeders for a market comparison. Slaughter cows 3.00 higher. Slaughter bulls steady.

FEEDER STEERS:
Medium and Large 1

400-500 lbs. 190.00-227.00
500-600 lbs. 185.00-200.00
600-700 lbs. 165.00-195.00
750-800 lbs. 160.00-177.00

FEEDER HEIFERS:
Medium and Large 1

400-500 lbs. 170.00-190.00
500-600 lbs. 160.00-177.00
600-700 lbs. 159.00-165.00
Pkg 785 lbs. 136.00
Pkg 827 lbs. 142.00

SLAUGHTER BULLS: Yield
Grade 1-2 1120-2285 lbs. 80.00-91.00; high dressing 96.00-111.00

SLAUGHTER COWS: Breaking and Boning (75-85% lean) 60.00-81.00; high dressing 68.00-78.00. Lean (85-90% lean) few 50.00-57.00

BRED COWS: Medium and Large 2 >8 yrs 1025-1400 lbs 2nd to 3rd stage 775.00-950.00 per head

COW & CALF PAIRS: Scarce

EAST CENTRAL MISSOURI WEEKLY SUMMARY

(Cuba, Vienna)

Receipts: 884 Week ago: 352 Year ago: 982

Compared to two weeks ago, steers 3.00 to 6.00 higher and heifers 6.00 to 12.00 higher. Slaughter cows 4.00 to 6.00 higher.

FEEDER STEERS:
Medium and Large 1

300-400 lbs. 230.00-237.50
400-500 lbs. 216.00-229.00
500-600 lbs. 204.00-223.00
600-700 lbs. 191.00-205.00
700-800 lbs. 173.00-184.25

FEEDER HEIFERS:
Medium and Large 1

400-500 lbs. 191.00-211.00
500-600 lbs. 180.50-189.50
600-700 lbs. 173.50-178.25

SLAUGHTER BULLS: Yield
Grade 1-2 1505-2195 lbs 96.00-98.50; high dressing 100.00-105.00

SLAUGHTER COWS: Breaking and Boning, (70-85% lean) 80.00-84.50; low dressing 74.00-80.00. Lean (85-90%) few 72.50-74.00

BRED COWS: Medium and Large 1-2 2-8 yrs 1005-1295 lbs 2nd to 3rd stage 1100.00-1225.00 per head

COW & CALF PAIRS: Scarce

NORTHWEST MISSOURI WEEKLY SUMMARY

(Tina)

Receipts: 1776 Week ago: 1308

Compared to last week, steers mostly steady. Heifers 2.00 to 4.00 higher. Slaughter cattle 2.00 to 4.00 higher.

FEEDER STEERS:
Medium and Large 1

400-500 lbs. 206.00-222.00
500-600 lbs. 198.00-223.50
600-700 lbs. 180.00-200.50
700-800 lbs. 176.25-182.25
800-900 lbs. 162.00-167.00

FEEDER HEIFERS:
Medium and Large 1

400-500 lbs. 177.00-192.00
11 hd 541 lbs. 182.00
600-700 lbs. 163.50-177.75
700-750 lbs. 166.00-171.25

SLAUGHTER BULLS: Yield
Grade 1-2 couple 1285-1905 lbs 91.00-99.50

SLAUGHTER COWS: Breaking and Boning, (70-85% lean) 63.50-78.50; high dressing 71.00-88.00 Lean (85-90%) couple 57.00-62.00

BRED COWS: Medium and Large 1 2-8 yrs 1075-1450 lbs 2nd and 3rd stage 1600.00-1900.00, Bred Heifers Medium and Large 1 <2 yrs 2nd and 3rd

COW & CALF PAIRS: Medium and Large 1 2-8 yrs 1100-1300 lbs calves over 300 lbs bred back 2350.00-2700.00 per pair

AFTERNOON NATIONAL SLAUGHTER CATTLE REVIEW

02/03/2023

So far for Friday negotiated cash trading has been slow on light demand in Nebraska and Western Cornbelt. In both regions a few dressed purchases have traded at 250.00. In the Western Cornbelt a few live purchases have traded at 160.00. In Kansas negotiated cash trade has been mostly inactive on very light demand. However, not enough purchases in these regions for a full market trend. In the Texas Panhandle negotiated cash trade has been at a standstill.

Negotiated Cash Sales:					
Confirmed:	12,243	Week Ago:	5,599	Year Ago:	5,250
Week to date:	18,979	Week Ago:	43,287	Year Ago:	95,341

Live Basis	Steers	Heifers
Over 80% Choice	158.00-160.00 avg 159.29	154.00-160.00 avg 158.57
65-80% Choice	-	-
35-65% Choice	-	-
0-35% Choice	-	-
Total All Grades	158.00-160.00 avg 159.29	154.00-160.00 avg 158.57
Dressed Basis		
Over 80% Choice	248.00-250.00 avg 249.78	248.00-250.00 avg 249.93
65-80% Choice	250.00-250.00 avg 250.00	250.00-250.00 avg 250.00
35-65% Choice	-	-
0-35% Choice	-	-
Total All Grades	248.00-250.00 avg 249.84	248.00-250.00 avg 249.94

All Beef Type Steers/Heifers	Head	Avg Wt	Price Range	Wtd Avg
Live FOB	3581	1428.30	154.00-160.50	158.57
Live Del	1435	1471.10	159.00-162.00	161.48
Dressed Del	6274	899.30	248.00-256.00	250.30
Dressed FOB	924	946.90	250.00	250.00

WEEKLY COMMODITY FUTURES TRENDS

Compared to last week, Live Cattle 1.72 to 3.55 higher, Lean Hogs uneven 0.85 lower to 0.35 higher, Feeder Cattle 2.63 to 3.07 higher.

Daily Futures Closes

	Mon.	Tues.	Wed.	Thu.	Fri.
Cattle					
Feb	158.75	158.85	158.42	159.75	160.27
Apr	163.35	163.02	162.22	163.82	164.12
Jun	159.47	159.15	158.70	160.00	160.27
Aug	158.77	158.77	158.42	159.50	159.65
Oct	163.00	162.92	162.50	163.67	163.87
Lean Hogs					
Feb	75.15	74.87	73.97	75.35	75.02
Apr	86.52	86.42	84.30	86.00	86.47
May	95.02	95.42	93.77	95.27	95.27
Jun	103.15	103.05	101.47	102.65	103.30
Jul	104.45	104.15	102.97	104.12	104.87
Fdr Cat					
Mar	183.92	186.15	183.25	185.92	186.10
Apr	188.27	190.05	187.95	190.07	190.62
May	192.72	193.97	192.40	194.25	194.77
Aug	206.00	206.92	205.47	207.37	207.92
Sep	208.52	209.60	208.25	210.05	210.65
Milk					
Jan	19.45	19.48			
Feb	17.94	17.84	17.90	17.93	17.92
Mar	17.81	17.56	17.64	17.79	17.73

WEEKLY COMMODITY GRAIN FUTURES TRENDS

Compared to last week, Soybeans 0.19 to 0.23 higher, Wheat 0.07 to 0.15 higher, Corn nearby 0.04 to 0.05 lower, others unchanged to 0.09 higher, KC Wheat 0.04 to 0.09 higher, Soybean Meal 18.00 to 23.00 higher.

Daily Grain Futures Closes

	Mon.	Tues.	Wed.	Thu.	Fri.
Soybeans					
Mar	1535 1/4	1538	1520 1/4	1534 1/4	1532
May	1529 1/2	1530 1/4	1516 1/2	1527 3/4	1525 1/2
Jul	1519 1/2	1518 3/4	1508	1518 1/2	1516 1/2
Aug	1477 3/4	1476 1/4	1468 1/2	1479 1/4	1477 3/4
Sep	1403 1/4	1399 1/2	1395	1405 1/4	1404
Wheat					
Mar	752 1/2	761 1/4	759 3/4	761	756 3/4
May	762	770 1/2	770 1/2	772	768 1/4
Jul	763 1/2	771 1/4	773	775 1/2	771 3/4
Sep	770 1/2	777 3/4	779 3/4	783 1/4	780 1/4
Dec	782 3/4	790 3/4	792 3/4	796 1/4	793 3/4
Corn					
Mar	683 3/4	679 3/4	681	675 1/4	677 1/2
May	681 1/4	677 1/2	679 1/2	673 3/4	675 1/2
Jul	667 1/2	665 1/4	668	663	664 3/4
Sep	605 1/2	605 1/2	610 3/4	609	610 1/2
Dec	589 3/4	590 3/4	596 1/4	595	596
KC Wheat					
Mar	873 3/4	878 3/4	884 1/4	880 3/4	873
May	867 1/4	871 3/4	876 3/4	873 3/4	866 1/4
Jul	858 1/2	863 1/2	868	865 1/2	857 3/4
Sep	857 1/4	863 1/4	868	866 1/4	858 1/4
Dec	859 3/4	867 1/2	871 1/2	871	863
SB Meal					
Mar	488.70	484.20	484.70	491.80	496.50
May	471.90	468.50	469.40	475.80	480.70
Jul	459.60	456.30	458.10	464.30	470.60
Aug	441.20	437.30	440.10	446.10	752.80
Sep	419.90	415.20	418.90	424.70	431.70

MISSOURI GRAIN WEEKLY TRENDS

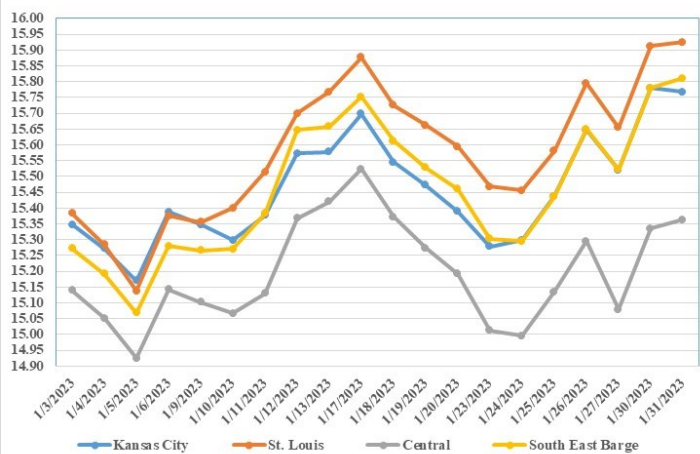
Compared to last week, Soybeans 0.12 to 0.23 higher, Wheat 0.06 higher, Corn 0.02 to 0.11 lower, Sorghum 0.06 lower.

Area	#1 Soybeans	#2 Soft Wheat	#2 Corn	#2 Grain Sorghum
Kansas City				
Friday**	15.40-15.60	7.80	7.18-7.35	6.88
Monday	15.65-15.83	7.83	7.19-7.36	6.89
Tuesday	15.68-15.83	7.91	7.14-7.31	6.84
Wednesday	15.60-15.75	7.90	7.33	6.86
Thursday	15.54-15.80	7.91	7.05-7.23	6.80
Friday	15.52-15.77	7.86	7.07-7.25	6.82
St. Louis				
Friday**	15.65-15.67	7.35-7.85	7.11	7.18-7.28
Monday	15.90-15.92	7.38-7.88	7.12	7.19-7.29
Tuesday	15.92-15.93	7.46-7.96	7.07-7.09	7.14-7.24
Wednesday	15.62-15.71	7.45-7.95	7.13-7.18	7.26
Thursday	15.76-15.81	7.46-7.96	7.07-7.11	7.20
Friday	15.76-15.79	7.41-7.91	7.04-7.09	7.22
Central				
Friday**	15.05-15.10	7.25-7.30	7.13-7.18	—
Monday	15.30-15.35	7.28-7.33	7.14-7.19	—
Tuesday	15.33-15.38	7.36-7.41	7.09-7.14	—
Wednesday	15.15-15.20	7.35-7.40	7.06-7.16	—
Thursday	15.29-15.34	7.36-7.41	7.00-7.05	—
Friday	15.27-15.32	7.31-7.36	7.02-7.07	—
S.E. MO				
Friday**	15.46-15.60	—	6.93-7.08	—
Monday	15.71-15.85	—	6.94-7.09	—
Tuesday	15.74-15.88	—	6.89-7.04	—
Wednesday	15.52-15.70	—	7.00-7.13	—
Thursday	15.66-15.79	—	6.92-7.07	—
Friday	15.64-15.80	—	6.94-7.09	—

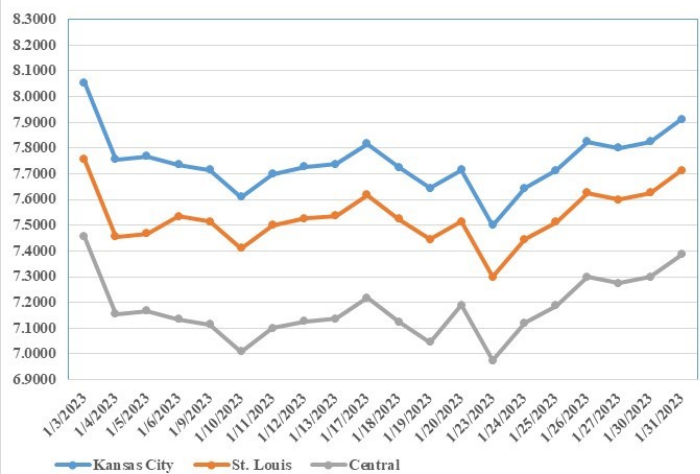
(PRICES PER BUSHEL) *NEW CROP **PREVIOUS WEEK'S PRICES
*Bids calculated using Kansas City, St. Louis, and St. Joseph bids

MONTHLY GRAIN CROP

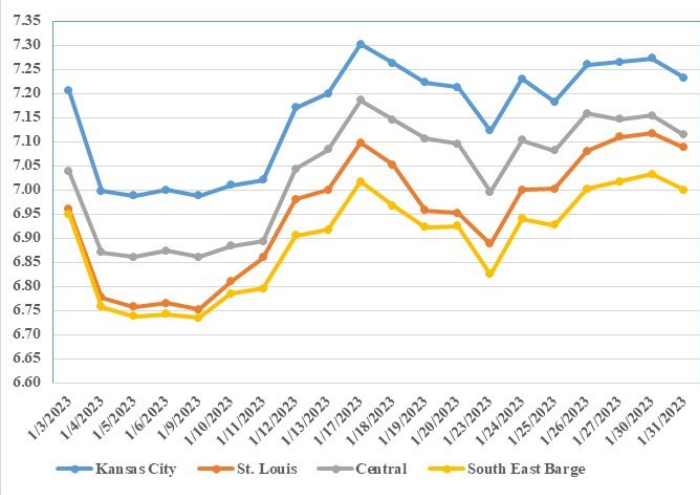
January 2023 Soybean Bids



January 2023 Wheat Bids



January 2023 Corn Bids



*Axis value ranges may be updated to reflect data points.

**WHOLESALE FEEDSTUFFS PRICES
(DOLLARS PER TON-BULK BASIS)**

Area	Soybean Hulls Pellets	Soybean Meal 46.5-48%	Corn Gluten Pellets 21%	Wheat Middlings
Kansas City	257.50	516.50	312.67	230.00
St. Louis	n/a	n/a	302.50	227.50

GRAIN CRUSHINGS AND CO-PRODUCTS PRODUCTION

Total corn consumed for alcohol and other uses was 474 million bushels in December 2022. Total corn consumption was down 5 percent from November 2022 and down 11 percent from December 2021. December 2022 usage included 91.9 percent for alcohol and 8.1 percent for other purposes. Corn consumed for beverage alcohol totaled 4.45 million bushels, up 1 percent from November 2022 but down 6 percent from December 2021. Corn for fuel alcohol, at 425 million bushels, was down 6 percent from November 2022 and down 11 percent from December 2021. Corn consumed in December 2022 for dry milling fuel production and wet milling fuel production was 92.0 percent and 8.0 percent, respectively.

Dry mill co-product production of distillers dried grains with solubles (DDGS) was 1.68 million tons during December 2022, down 6 percent from November 2022 and down 19 percent from December 2021. Distillers wet grains (DWG) 65 percent or more moisture was 1.36 million tons in December 2022, down 7 percent from November 2022 and down 4 percent from December 2021.

Wet mill corn gluten feed production was 252,788 tons during December 2022, down 9 percent from November 2022 and down 11 percent from December 2021. Wet corn gluten feed 40 to 60 percent moisture was 188,584 tons in December 2022, down 8 percent from November 2022 and down 12 percent from December 2021.

FATS AND OILS: OILSEED CRUSHINGS, PRODUCTION, CONSUMPTION, AND STOCKS

Soybeans crushed for crude oil was 5.62 million tons (187 million bushels) in December 2022, compared with 5.68 million tons (189 million bushels) in November 2022 and 5.95 million tons (198 million bushels) in December 2021. Crude oil produced was 2.20 billion pounds down less than 1 percent from November 2022 and down 6 percent from December 2021. Soybean once refined oil production at 1.58 billion pounds during December 2022 decreased 3 percent from November 2022 and decreased 4 percent from December 2021.

Canola seeds crushed for crude oil was 181,455 tons in December 2022, compared with 180,750 tons in November 2022 and 176,931 tons in December 2021. Canola crude oil produced was 146 million pounds, up 1 percent from November 2022 and up 4 percent from December 2021. Canola once refined oil production, at 135 million pounds during December 2022, was down 7 percent from November 2022 and down 9 percent from December 2021.

Cottonseed once refined oil production, at 27.0 million pounds during December 2022, was down 27 percent from November 2022 and down 49 percent from December 2021.

Edible tallow production was 77.3 million pounds during December 2022, up 11 percent from November 2022 and up 16 percent from December 2021. Inedible tallow production was 362 million pounds during December 2022, up less than 1 percent from November 2022 and up 27 percent from December 2021. Technical tallow production was 99.7 million pounds during December 2022, down 20 percent from November 2022 and down 4 percent from December 2021. Choice white grease production, at 113 million pounds during December 2022, decreased 3 percent from November 2022 and decreased 8 percent from December 2021.

MISSOURI WEEKLY HAY SUMMARY 02/02/23

Winter weather has hung around the southern half of the state for another week. Freezing rain, sleet and a little more snow made for another long week of feeding and getting around. It hasn't much felt like it this week but as January warped up the average temperature for the month was 9 degrees above normal. As we start February livestock owners are counting bales and taking inventory trying to decide if they have enough to make anticipated dates of grass arrival. The supply of hay is light, demand is moderate and prices are fully steady. The Missouri Department of Agriculture has a hay directory visit <http://mda.mo.gov/abd/haydirectory/> for listings of hay <http://agebb.missouri.edu/haylst/>

Alfalfa - Supreme 250.00-300.00, small square 10.00-15.00 per bale
Alfalfa - Premium 180.00-250.00
Alfalfa - Good 150.00-180.00, small square 5.00-9.00 per bale
Alfalfa - Fair 125.00-150.00
Alfalfa/grass mix - Good/Premium small square 5.00-9.00 per bale
Mixed grass - Good/Premium 125.00-175.00
Mixed grass - Fair/Good 100.00-150.00, small square 5.00-8.00 per bale
Mixed grass - Fair 50.00-85.00 per large round bale
Con stalk - 35.00 per round bale
Wheat straw - 4.00-7.00 per small square bale

Please Note: The above volumes (tonnage, acres, and bales) listed on this USDA LPGMN report are for confirmed trades only, it does not include estimated volume (tonnage) for bids or offers to the trade.

The current hay directory can be found at: [Hay Directory](http://HayDirectory.com)

List your hay for sale at: [Hay Listing Online Form](http://HayListingOnlineForm.com)

Explanation of Hay Quality Guidelines: [Hay Quality Designation Guidelines](http://HayQualityDesignationGuidelines.com)

Glossary of Terms: [Livestock, Poultry, and Grain Hay Terms](http://Livestock,Poultry,andGrainHayTerms.com)

MISSOURI WEEKLY SHEEP/GOAT AUCTION SUMMARY

02/03/23

Receipts: 450 Week Ago: 1901 Last Year: 676

SHEEP: Feeder lambs Small and Medium 1-2 hair 30-40 lbs 295.00-305.00; 40-50 lbs 250.00-285.00. Slaughter lambs Choice and Prime 1-3 hair 50-65 lbs 250.00-290.00; pkg 70 lbs 245.00; pkg 82 lbs 215.00. Choice 1-3 hair 65 lbs 240.00-245.00; pkg 75 lbs 210.00. Slaughter ewes Good 2-3 95-190 lbs 107.50-115.00. Utility and Good 1-3 pkg 165 lbs 102.50. Good 2-3 hair pkg 87 lbs 135.00; pkg 107 lbs 125.00. Utility and Good 1-3 pkg 85 lbs 85.00; pkg 102 lbs 105.00.

Replacement ewes Medium and Large 1-2 2-4 yrs 135-148 lbs exposed 115.00-150.00. Small and Medium 1-2 hair 1-2 yrs pkg 100 lbs spr 170.00; 2-4 yrs 95-170 lbs exp 125.00-160.00. Families Small and Medium 1-2 2-4 yrs 120-123 lbs exp with <20 lb lambs 240.00-450.00 per family.

GOATS: Feeder kids Selection 1 35-45 lbs 287.50-320.00. Selection 2 30-50 lbs 260.00-275.00. Selection 3 pkg 40 lbs 165.00. Slaughter kids 50-60 lbs 275.00-277.50. Selection 2 50-65 lbs 255.00-280.00; pkg 72 lbs 230.00. Slaughter nannies/does Selection 1-2 78 lbs 160.00-215.00; pkg 115 lbs 145.00. Slaughter bucks/billies Selection 1-2 80-175 lbs 165.00-185.00. Slaughter wethers Selection 1-2 80-95 lbs 215.00. Slaughter wether kids Selection 2 50-80 lbs 237.50-265.00.

Replacement nannies/does Selection 1-2 2-4 yrs 60-125 lbs exp 170.00-200.00. Families Selection 1-2 2-4 yrs 80-85 lbs exp with <20 lb kids 180.00-232.50 per family.

Explanatory Notes: Stage - Represents estimated lambing/kidding period (Open, Exp=exposed, Bred, Fall = Sep-Nov, Win = Dec-Feb, Spr = Mar-May, Sum=Jun-Aug; w/s = woolled and shorn; /hd= per head; All price CWT unless otherwise noted.

MISSOURI DROUGHT MONITOR 02/02/2023

Date	None	D0	D1	D2	D3	D4
01/31/23	47.23	42.35	8.91	1.51	0	0
01/24/23	41.55	47.88	8.96	1.61	0	0
02/01/22	55.10	40.81	4.09	0	0	0

Reflects percentage of Missouri impacted by drought.
D0 Abnormally Dry; D1 Moderate Drought; D2 Severe Drought; D3 Extreme Drought; D4 Exceptional Drought

NATIONAL DIRECT DELIVERED FEEDER PIG REPORT

02/03/23 Receipts: 70,530 Week ago: 103,203 Year Ago: 80,817
Early weaned pigs 1.00/hd lower. All feeder pigs 17.00/hd lower.
Early weaned pigs 10-12 lbs. basis: Cash 30,149 head 50.00-75.00, weighted average 66.85. Formula 40,126 head 33,136, 49.46-72.05, weighted average 56.07. Feeder pigs 40 pounds basis: Cash 7,245 head 53.00-91.00, weighted average 79.22.

NATIONAL DAILY DIRECT PRIOR DAY HOG REPORTS FOR 02/03/23

BARROWS AND GILTS (Carcass Basis): 6,950 head
Base Carcass Price 67.00-77.00, weighted average 72.08

SOWS (Live Basis): 7,070 head
300-500 lbs. 18.00-57.75
Over 500 lbs. 38.00-58.00

MISSOURI WEEKLY DIRECT SLAUGHTER CATTLE REPORT 02/03/23

Weekly Receipts: 200 Week ago: 680 Year ago: 280
Trade as of Friday morning: trade is light to moderate with flat dressed sales mostly steady. Grid dressed sales inactive this week.

LIVE STEERS & HEIFERS: No sales reported
DRESSED STEERS & HEIFERS: 5 loads Thu flat 248.00

GRADE AND WEIGHT (Grid): No sales reported

Click here for the current [National Crop Progress](http://NationalCropProgress.com)
Click here for the current [Missouri Crop Progress](http://MissouriCropProgress.com)