

Weekly Market Summary

Published by:
Missouri Department of Agriculture
Ag Business Development Division
Market News Program



Chris Chinn, Director
 Jill Wood, Division Director
 Tony Hancock, Editor
[agmarketnews.mo.gov](http://www.ams.usda.gov/marketnews.htm)
<http://www.ams.usda.gov/marketnews.htm>

Michael L. Parson, Governor

Volume XLIII, Number 8 ♦ P.O. Box 630, Jefferson City, MO 65102 ♦ (573) 751-4211 ♦ Monday, February 27, 2023

MISSOURI WEEKLY FEEDER CATTLE WEIGHTED AVERAGE REPORT

Receipts: 34,872 Week ago: 28,490 Year ago: 24,869
 Steers and Heifers Medium and Large 1—Weighted average weights and prices

STEERS: Medium and Large 1

284 lbs. 236.21	475 lbs. 238.12	673 lbs. 200.59	861 lbs. 179.75
327 lbs. 248.81	526 lbs. 229.93	722 lbs. 190.92	923 lbs. 173.30
378 lbs. 242.95	574 lbs. 223.65	774 lbs. 185.25	
430 lbs. 242.32	625 lbs. 209.15	818 lbs. 180.54	

HEIFERS: Medium and Large 1

292 lbs. 222.73	473 lbs. 204.00	674 lbs. 181.77	860 lbs. 161.71
321 lbs. 226.17	527 lbs. 196.84	716 lbs. 176.46	951 lbs. 168.75
373 lbs. 217.42	573 lbs. 195.05	767 lbs. 173.48	
424 lbs. 208.66	621 lbs. 184.53	815 lbs. 165.68	

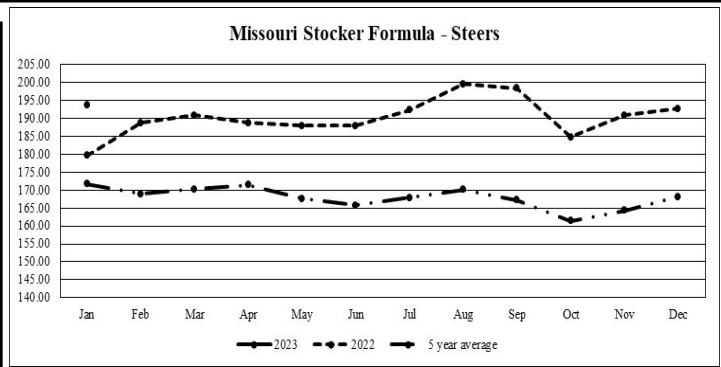
Missouri Steer (Heifer) Stocker Formula for 02/27/2023

Monday's Missouri Stocker Formula consists of **8819 (7573)** head with a weighted average weight of **544.16 (\$35.53)** lbs. and a price value of **219.62 (192.24)**, 2.76 higher (3.35 higher) than last week.

This a rolling seven day calculated weighted value which combines all Feeder Steers reported by MDA/USDA Market News Service weighing from 400-649 lbs. in the Medium and Large 1 and Medium and Large 1-2 frame and muscle classifications, including all comment cattle except Brahman X. Heifer values are in parentheses.

Missouri Weekly Cattle Auction Summary 02/27/2023

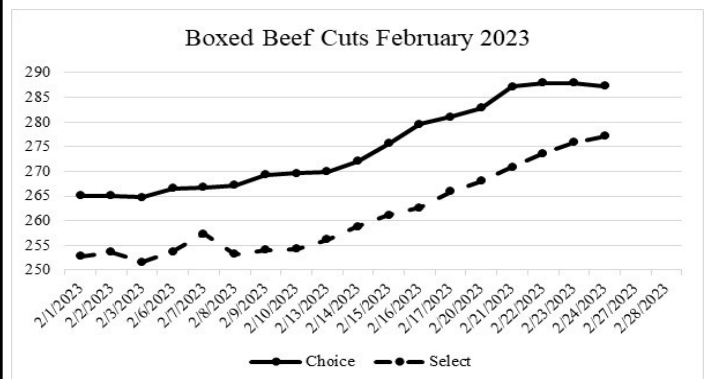
Compared to last week, feeders sold steady to 5.00 higher. Most of the market advance was on the lighter grazing type cattle, generally under 650 lbs. The supply of feeders was moderate and demand remains good to very good. The state once again received some rain, adding to the mud but rain makes grass and after last summer, no one really wants to complain. The state was spared from the heavy snows that went across the northern plains leaving snow that was measured in feet in several areas. As February wraps up, there are plenty of signs spring is on the way. Some concern that maybe it is too early, as we know late freezes and winter weather are still more than a likely possibility. Highlights this week were plentiful with it hard to pick what was most impressive and by no means were these necessarily the top highest prices but as far as sizeable drafts go, at least for the psychological factor one has to start with 39 head of 313 lb. steers that sold at Joplin Regional Stockyards for 303.00, marking the first sizeable draft to break the three dollars per pound mark. Windsor Livestock Auction had several impressive drafts this week including 19 head of 543 lb. steers at 251.00 and 55 head of 617 lb. steers at 226.50. On the bigger end, Lolli Brothers Livestock Market sold 22 head of 712 lb. steers at 198.75 and Callaway Livestock Market sold 110 head of 929 lb. steers for 174.75. If that isn't enough to make a feller say wow, there was several drafts of heifers that sold at prices which just a couple of months ago would have seemed high for steers. Two of which included 75 head of 564 lb. heifers at Windsor Livestock Auction which sold 218.00 and finally to wrap up F & T Livestock Market sold 70 head of 771 lb. heifers going to feed for 189.50. Boxed beef cutouts continue to climb, Friday's closes were the highest Friday close in since January of 2022. Choice closed the week at 287.28, up 6.24 and select closed at 277.09, up 11.20 compared to last Friday. Negotiated feedlot sales as of Friday afternoon totaled just over 57K head. Once again this week deals were slow to develop and as of the final report Friday afternoon, little to no trade had taken place in the southern plains. In the north, live sales were reported from 164.00-166.00 and dressed sales mostly 260.00-262.00. The Missouri Stocker Formula consist of 8819 head with a weighted average weight of 544.16 lbs. and a price value of 219.62, 2.76 higher than last week. The steer/heifer spread is 27.38.



*Graph is updated the first Monday of each month.

NATIONAL BOXED BEEF CUTOFF/BOXED BEEF CUTS

DATE	CHOICE	SELECT	TOTAL LOADS
02/20	282.89	268.05	72
02/21	287.20	270.84	114
02/22	287.91	273.64	97
02/23	287.91	275.87	107
02/24	287.28	277.08	95
5 Day Simple Average	286.64	273.10	



*Axis value ranges may be updated to reflect data points.

WEEKLY LIVESTOCK SLAUGHTER 02/25/23

	CATTLE	HOGS	SHEEP
Week to Date:	618,000	2,375,000	34,000
Last Week:	627,000	2,505,000	37,000
Last Year:	651,000	2,492,000	30,000

The Weekly Market Summary, as well as historical summaries, are available on our website <https://agmarketnews.mo.gov/summaries>
 Market News Hotline: 1-573-522-9244

SOUTHWEST MISSOURI WEEKLY SUMMARY

(Joplin and Springfield)

Receipts: 11,896 Week ago: 12,452 Year ago: 10,019

Compared to last week, steers and heifers unevenly steady to 5.00 higher. Slaughter cows mostly steady to 3.00 higher, spots 5.00 higher. Slaughter bulls steady to 3.00 higher.

FEEDER STEERS:
Medium and Large 1

300-400 lbs.	234.00-279.00
400-500 lbs.	225.00-263.00
500-600 lbs.	209.50-236.00
600-700 lbs.	190.00-223.00
700-800 lbs.	178.00-198.00
800-900 lbs.	180.00-184.50
900-950 lbs.	172.00-176.00

FEEDER HEIFERS:
Medium and Large 1

300-400 lbs.	199.00-252.00
400-500 lbs.	193.00-223.00
500-600 lbs.	178.50-208.00
600-700 lbs.	171.00-193.00
700-800 lbs.	163.50-176.00
800-850 lbs.	164.00-169.50

FEEDER HOLSTEIN STEERS
Large 3

300-400 lbs.	134.00-135.00
400-500 lbs.	118.00-129.00
500-550 lbs.	125.00-132.00
Pkg 859 lbs.	95.00

SLAUGHTER COWS: Breaking and Boning (70-85% lean) 80.00-95.00, high dressing 91.00-104.00; low dressing 71.00-81.00. Lean (85-90%) 64.00-83.00

SLAUGHTER BULLS: Yield Grade 1-2 1200-2375 lbs. 96.00-113.00; high dressing 112.00-122.00; low dressing 82.00-97.00

BRED COWS: Medium and Large 1-2 2-8 yrs 1040-1410 lbs 2nd to 3rd stage 1100.00-1425.00, 1st stage 1125.00-1350.00; >8yrs 1103-1375 lbs 2nd to 3rd stage 950.00-1290.00 per head

COW & CALF PAIRS: Medium and Large 1-2 2-8 yrs 1140-1190 lbs with 150-300 lb calves 1600.00-1750.00 per pair

BRED HEIFERS: Medium and Large 1-2 <2 yrs 998-1073 lbs 1st stage 985.00-1075.00 per head

SOUTH CENTRAL MISSOURI WEEKLY SUMMARY

(West Plains, Phillipsburg)

Receipts: 5770 Week ago: 5361 Year Ago: 2222

Compared to last week, steers and heifers steady to 3.00 higher, spots 7.00 higher on calves early week. Slaughter cows steady to 4.00 higher.

FEEDER STEERS:
Medium and Large 1

300-400 lbs.	222.00-265.00
400-500 lbs.	222.50-250.00
500-600 lbs.	205.00-238.00
600-700 lbs.	187.00-219.00
700-800 lbs.	183.00-196.00
800-850 lbs.	175.50-179.00
Pkg 919 lbs.	171.00

FEEDER HEIFERS:
Medium and Large 1

300-400 lbs.	200.00-219.00
400-500 lbs.	187.00-217.00
500-600 lbs.	178.00-197.50
600-700 lbs.	168.00-181.00
Pkg 737 lbs.	171.00
Pkg 817 lbs.	165.00

FEEDER HOLSTEIN STEERS
Large 3

Scarce Scarce

SLAUGHTER COWS: Breaking and Boning (70-85% lean) 79.00-92.50, high dressing 90.00-101.00; low dressing 62.00-81.00. Lean (85-90%) 66.00-84.00

SLAUGHTER BULLS: Yield Grade 1-2 1215-2215 lbs. 97.00-114.00; high dressing 109.50-130.00; low dressing 81.00-97.00

BRED COWS: Medium and Large 1 2-8 yrs 1180-1285 lbs 2nd to 3rd stage 1450.00-1525.00. Medium and Large 1-2 2-8 yrs 1010-1350 lbs 2nd to 3rd stage 1100.00-1450.00; over 8 yrs couple 1065-1160 lbs 2nd to 3rd stage 900.00-950.00 per head

COW & CALF PAIRS: Medium and Large 1-2 2-8 yrs 945-1285 lbs with 150-300 lb calves 1450.00-1775.00 per pair. Medium and Large 2 2-8 yrs 4 pairs 895 lbs with 150-300 lb calves 1400.00 per pair

BRED HEIFERS: Medium and Large 1-2 <2 yrs 743-985 lbs 1st to 3rd stage 800.00-1125.00 per head

WEST CENTRAL MISSOURI WEEKLY SUMMARY

(Kingsville, Windsor, Butler)

Receipts: 6433 Week ago: 6741 Year ago: 4720

Compared to last week, bulk of steers and heifers steady to 5.00 higher, spots up to 15.00 higher on some fancy grazing type cattle under 600 lbs. Slaughter cows steady to 6.00 higher.

FEEDER STEERS:
Medium and Large 1

400-500 lbs.	219.00-265.00
500-600 lbs.	218.00-251.00
600-700 lbs.	192.25-226.50
700-800 lbs.	178.00-198.00
800-900 lbs.	173.00-187.00

FEEDER HEIFERS:
Medium and Large 1

400-500 lbs.	196.00-225.00
500-600 lbs.	181.50-215.00
600-700 lbs.	179.50-197.25
700-800 lbs.	172.00-185.75
800-900 lbs.	158.50-164.00

SLAUGHTER BULLS: Yield Grade 1-2 1200-2255 lbs 103.00-117.00; high dressing 119.00-128.00; low dressing 82.50-102.50

SLAUGHTER COWS: Breaking and Boning (70-85% lean) 83.00-98.00, high dressing 94.00-101.50; low dressing 76.00-84.00. Lean (85-90%) 72.00-86.00

BRED COWS: Medium and Large 1-2 2-4 yrs 895-1119 lbs 2nd to 3rd stage 1450.00-1675.00; 5-8 yrs 1017-1253 lbs 2nd to 3rd stage 1075.00-1500.00 per head

COW & CALF PAIRS: Medium and Large 1-2 5-8 yrs 1115-1338 lbs with 150-300 lb calves 1400.00 -1550.00 per pair

NORTHEAST MISSOURI WEEKLY SUMMARY

(Bowling Green, Kingdom City, Palmyra)

Receipts: 4937 Week ago: 2196 Year ago: 4254

Compared to last week, feeder calves under 700 lbs firm to 5.00 higher, spots 10.00 higher, over 700 lbs firm to higher undertone. Slaughter cows steady to firm.

FEEDER STEERS:
Medium and Large 1

400-500 lbs.	225.00-247.50
500-600 lbs.	214.00-247.50
600-700 lbs.	192.00-218.50
700-800 lbs.	182.50-202.00
11 hd 815 lbs.	185.00
900-950 lbs.	174.25-174.75

FEEDER HEIFERS:
Medium and Large 1

300-400 lbs.	206.00-228.00
400-500 lbs.	196.00-221.00
500-600 lbs.	186.00-212.00
600-700 lbs.	180.50-194.00
700-800 lbs.	171.00-180.00
800-900 lbs.	163.00-166.50

SLAUGHTER BULLS: Yield Grade 1-2 1200-2235 lbs 93.00-125.50; high dressing 105.00-131.00; low dressing 85.00-113.00

SLAUGHTER COWS: Breaking and Boning, (70-85% lean) 79.00-93.00; high dressing 88.00-103.50; low dressing 70.00-85.00. Lean (85-90%) 74.00-85.00

SLAUGHTER STEERS: Choice and Prime 2-4 171.00-173.00. Choice 2-3 159.00-169.00.

SLAUGHTER HEIFERS: Choice 2-3 164.00-169.00. Choice 3-4 few 159.00-163.00. Select 1-2 151.00-152.00

BRED COWS: Scarce

COW/CALF PAIRS: Scarce

NORTH CENTRAL MISSOURI WEEKLY SUMMARY

(Macon, Unionville, Green City, New Cambria)

Receipts: 2649 Week ago: 3627 Year ago: 5598

Compared to last week, steers and heifers mostly steady to 5.00 higher. Slaughter cows steady to firm.

*Some sale barns on a bi-weekly schedule and may not have a sale each week.

FEEDER STEERS:
Medium and Large 1

400-500 lbs.	235.00-247.50
500-600 lbs.	212.00-234.00
600-700 lbs.	191.50-215.25
700-800 lbs.	178.50-198.75
12 hd 913 lbs.	168.50

FEEDER HEIFERS:
Medium and Large 1

400-500 lbs.	193.25-221.00
500-600 lbs.	175.50-203.50
600-700 lbs.	170.00-188.00
700-750 lbs.	169.50-175.50

SLAUGHTER BULLS: Yield Grade 1-2 1365-2515 lbs 95.00-112.00; high dressing 104.00-122.00; couple low dressing 92.00-93.00

SLAUGHTER COWS: Breaking and Boning, (70-85% lean) 75.00-89.00; high dressing 85.00-101.00. Lean (85-90%) 55.50-80.00

BRED COWS: Scarce

BRED HEIFERS: Scarce

SOUTHEAST MISSOURI WEEKLY SUMMARY

(Jackson and Farmington)

Receipts: 1942 Week ago: 1815 Year ago: 349

Compared to last week, steers and heifers steady to 10.00 higher. Slaughter cows steady to 2.00 higher. Slaughter bulls steady to 1.00 higher.

FEEDER STEERS:
Medium and Large 1

400-500 lbs.	195.00-230.00
500-600 lbs.	192.00-220.00
600-700 lbs.	168.00-193.00
700-800 lbs.	155.00-179.00
800-900 lbs.	160.00-175.00

FEEDER HEIFERS:
Medium and Large 1

300-400 lbs.	180.00-215.00
400-500 lbs.	175.00-215.00
500-600 lbs.	169.00-197.00
600-700 lbs.	158.00-184.00
700-800 lbs.	150.00-168.00

SLAUGHTER BULLS: Yield Grade 1-2 1170-2330 lbs. 84.00-102.50; high dressing 103.00-116.00

SLAUGHTER COWS: Breaking and Boning (75-85% lean) 70.00-81.00; high dressing 81.0-95.00. Lean (85-90% lean) 52.00-70.00

BRED COWS: Medium and Large 2 2-8 yrs 1000-1370 lbs 2nd to 3rd stage 760.00-1075.00; >8 yrs couple 1110 lbs 2nd to 3rd stage 700.00-850.00 per head

COW & CALF PAIRS: Medium and Large 2 2-8 yrs couple pairs 1000 lbs with 150-300 lb calves 1625.00 per pair

EAST CENTRAL MISSOURI WEEKLY SUMMARY

(Cuba, Vienna)

Receipts: 2836 Week ago: 952 Year ago: 1023

Compared to last week, steers and heifers steady to 5.00 higher. Slaughter cows 2.00 to 3.00 higher.

FEEDER STEERS:
Medium and Large 1

300-400 lbs.	243.00-261.00
400-500 lbs.	229.00-254.00
500-600 lbs.	210.00-245.00
600-700 lbs.	186.25-212.00
700-800 lbs.	176.00-185.25

FEEDER HEIFERS:
Medium and Large 1

300-400 lbs.	204.00-230.00
400-500 lbs.	190.00-216.00
500-600 lbs.	184.00-205.00
600-700 lbs.	172.00-188.00
700-800 lbs.	168.50-183.00

SLAUGHTER BULLS: Yield Grade 1-2 1290-2110 lbs 94.00-114.00; high dressing ind 119.50; low dressing 70.00-90.00

SLAUGHTER COWS: Breaking and Boning, (70-85% lean) 83.00-94.50; high dressing 91.50-96.50; low dressing 77.00-83.50. Lean (85-90%) 71.00-81.00

BRED COWS: Medium and Large 1-2 2-8 yrs 975-1215 lbs 1st to 3rd stage 1010.00-1425.00 per head

COW & CALF PAIRS: Scarce

NORTHWEST MISSOURI WEEKLY SUMMARY

(Tina)

Receipts: 3111 Two Weeks ago: 2495

Compared to two weeks ago, feeders 6.00 to 8.00 higher, some instances sharply higher. Slaughter cows mostly steady.

FEEDER STEERS:
Medium and Large 1

400-500 lbs.	220.00-250.00
500-600 lbs.	209.00-242.50
600-700 lbs.	200.50-215.00
700-800 lbs.	179.50-196.75
61 hd 830 lbs.	184.85

FEEDER HEIFERS:
Medium and Large 1

400-500 lbs.	199.00-220.00
500-600 lbs.	195.00-219.75
600-700 lbs.	175.00-190.00
700-750 lbs.	175.00-184.50

SLAUGHTER BULLS: Yield Grade 1-2 1150-1637 lbs 112.00-117.00; couple low dressing 78.00-85.00

SLAUGHTER COWS: Breaking and Boning, (70-85% lean) 75.00-91.00; high dressing 80.00-100.00. Lean (85-90%) 70.00-80.00

BRED COWS: Medium and Large 1 2-8 yrs 1182-1482 lbs 2nd to 3rd stage 1925.00-2050.00. Medium and Large 1-2 2-8 yrs 1203-1525 lbs 2nd to 3rd stage 1500.00-1775.00 per head

COW & CALF PAIRS: Medium and Large 1 2-8 yrs 1087-1305 lbs with <150 lb calves 2125.00-2450.00. Medium and Large 1-2 1010-1510 lbs with <150 to >300 lb calves 1600.00-1900.00 per pair

AFTERNOON NATIONAL SLAUGHTER CATTLE REVIEW

Thus far for Friday in Nebraska and Western Cornbelt negotiated cash trading has been slow on moderate demand. In Nebraska live purchases, on a light test, traded steady to 1.00 higher at 164.00, when compared to the last reported market on Thursday. Not enough dressed purchases in any price range for a market trend. Last week dressed purchases traded at 257.00. In the Western Cornbelt a few live purchases traded at 163.00. However, not enough live or dressed purchases for a market trend. Thursday was the fully reported live and dressed purchase market at 164.00 and at 260.00, respectively. In the Southern Plains negotiated cash trade has been mostly inactive on light demand. Not enough purchases for a market trend. The latest established market in the Southern Plains was last week with live purchases at 162.00.

Negotiated Cash Sales:

Confirmed:	15,133	Week Ago:	24,528	Year Ago:	6594
Week to date:	57,241	Week Ago:	66,217	Year Ago:	65,567

<u>Live Basis</u>	<u>Steers</u>	<u>Heifers</u>
Over 80% Choice	162.00-164.00, avg 163.73	163.00-164.00, avg 163.82
65-80% Choice	164.00	-
35-65% Choice	163.00-164.50, avg 163.73	163.00-164.50, avg 163.56
0-35% Choice	-	-
Total All Grades	162.00-164.50, avg 163.74	163.00-164.50, avg 163.78
<u>Dressed Basis</u>		
Over 80% Choice	258.00-262.00, avg 260.15	262.00
65-80% Choice	260.00-262.00, avg 260.91	-
35-65% Choice	260.00	260.00
0-35% Choice	-	-
Total All Grades	258.00-262.00, avg 260.31	260.00-262.00, avg 261.84

<u>All Beef Type Steers/Heifers</u>	<u>Head</u>	<u>Avg Wt</u>	<u>Price Range</u>	<u>Wtd Avg</u>
Live FOB	10,373	1455.5	161.00-164.50	163.81
Live Del	476	1503.6	164.00-167.50	166.64
Dressed Del	3,960	887.4	258.00-262.00	260.59
Dressed FOB	-	-	-	-

WEEKLY COMMODITY FUTURES TRENDS

Compared to last week, Live Cattle 0.72 to 1.63 higher, Lean Hogs 0.75 to 1.43 higher, Feeder Cattle 2.55 to 3.80 higher.

Daily Futures Closes

	Mon.	Tues.	Wed.	Thu.	Fri.
Cattle					
Feb	Holiday	164.75	164.90	165.15	165.20
Apr		165.10	165.07	165.32	165.37
Jun		160.87	161.10	161.27	161.07
Aug		159.67	159.90	160.10	159.77
Oct		163.67	163.92	164.17	163.92
Lean Hogs					
Apr	Holiday	89.10	86.55	86.20	86.02
May		97.17	95.75	95.95	95.35
Jun		105.27	103.80	103.95	103.47
Jul		107.15	106.00	106.22	105.82
Aug		107.05	106.27	106.55	106.00
Fdr Cat					
Mar	Holiday	186.87	187.97	189.22	189.07
Apr		190.80	191.75	193.67	193.57
May		194.87	195.62	197.72	198.05
Aug		208.37	209.62	211.35	211.52
Sep		211.10	212.05	213.67	213.77
Milk					
Feb	Holiday	17.91	17.88	17.89	17.86
Mar		17.84	17.80	17.76	17.72
Apr		18.07	17.90	17.74	17.60

WEEKLY COMMODITY GRAIN FUTURES TRENDS

Compared to last week, Soybeans Mar 0.02 higher, others 0.03 to 0.11 lower, Wheat 0.50 to 0.57 lower, Corn 0.19 to 0.28 lower, KC Wheat 0.47 to 0.65 lower, Soybean Meal 2.50 to 6.00 higher.

Daily Grain Futures Closes

	Mon.	Tues.	Wed.	Thu.	Fri.
Soybeans					
Mar	Holiday	1548 3/4	1539 1/2	1534 1/4	1529
May		1544	1534 3/4	1527 1/4	1519 1/4
Jul		1536 3/4	1527 1/0	1519 1/2	1508 1/2
Aug		1501 1/4	1494 3/4	1488 1/2	1476 1/2
Sep		1432 1/2	1427 1/2	1420 3/4	1406
Wheat					
Mar	Holiday	750 1/2	736 1/4	738 1/4	708 1/4
May		763 3/4	750	750 1/2	721 3/4
Jul		768 3/4	756 1/2	756 1/4	729 1/4
Sep		777 3/4	766 1/4	765	738 3/4
Dec		792 1/2	781	779 1/4	753 1/2
Corn					
Mar	Holiday	680 1/2	674	660 1/4	650
May		680 1/2	674 1/4	659 1/4	649 1/4
Jul		669 1/4	664	650 3/4	638 3/4
Sep		612 3/4	607 3/4	600	590 3/4
Dec		596 1/2	592	585 1/2	576 1/4
KC Wheat					
Mar	Holiday	904 1/4	876	861 3/4	841 3/4
May		893 1/2	869 1/2	856 3/4	835 1/4
Jul		881 1/2	861	851	828
Sep		878	860 3/4	853	830 1/2
Dec		880 3/4	865 1/4	859	836 3/4
SB Meal					
Mar	Holiday	497.70	492.60	493.10	497.10
May		481.60	477.50	478.00	480.00
Jul		472.20	469.00	469.60	469.60
Aug		458.50	456.50	456.90	455.70
Sep		441.30	440.40	441.00	438.50

MISSOURI GRAIN WEEKLY TRENDS

Compared to last week, Soybeans 0.02 to 0.08 lower, Wheat 0.57 to 0.72 lower, Corn 0.27 to 0.33 lower, Sorghum 0.23 to 0.28 lower.

Area	#1 Soybeans	#2 Soft Wheat	#2 Corn	#2 Grain Sorghum
Kansas City				
Friday**	15.22-15.47	7.96	7.08-7.18	6.83
Monday	Holiday			
Tuesday	15.44-15.69	7.81	7.11-7.21	6.86
Wednesday	15.35-15.55	7.67	7.04-7.12	6.79
Thursday	15.27-15.47	7.68	6.85-6.98	6.65
Friday	15.19-15.39	7.38	6.75-6.88	6.55
St. Louis				
Friday**	15.71-15.72	7.51-8.01	7.05-7.10	7.13-7.28
Monday	Holiday			
Tuesday	15.93-15.94	7.36-7.71	7.08-7.13	7.16-7.31
Wednesday	15.80-15.82	7.22-7.57	7.02-7.06	7.09-7.29
Thursday	15.74	7.23-7.58	6.88-6.92	6.95-7.15
Friday	15.69	6.93-7.28	6.78-6.83	6.85-7.05
Central				
Friday**	15.17-15.22	7.41-7.46	6.98-7.03	—
Monday	Holiday			
Tuesday	15.39-15.44	7.26-7.31	7.01-7.06	—
Wednesday	15.30-15.35	7.12-7.17	6.97-6.99	—
Thursday	15.22-15.27	7.13-7.18	6.80-6.85	—
Friday	15.14-15.19	6.83-6.88	6.69-6.75	—
S.E. MO				
Friday**	15.58-15.68	—	6.96-7.06	—
Monday	Holiday	—	—	—
Tuesday	15.80-15.90	—	6.98-7.09	—
Wednesday	15.68-15.79	—	6.94-7.02	—
Thursday	15.62-15.69	—	6.80-6.88	—
Friday	15.56-15.64	—	6.70-6.78	—

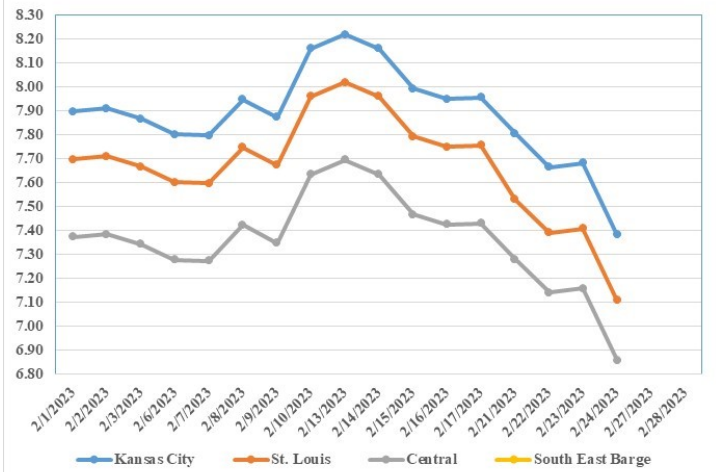
(PRICES PER BUSHEL) *NEW CROP **PREVIOUS WEEK'S PRICES
*Bids calculated using Kansas City, St. Louis, and St. Joseph bids

MONTHLY GRAIN CROP

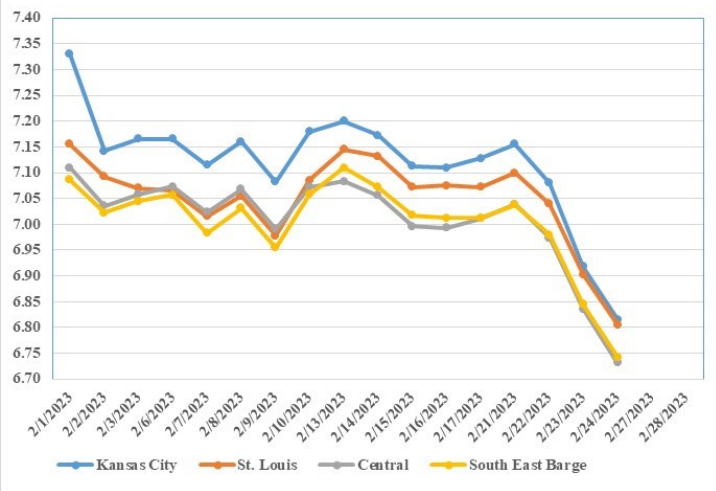
February 2023 Soybean Bids



February 2023 Wheat Bids



February 2023 Corn Bids



*Axis value ranges may be updated to reflect data points.

WHOLESALE FEEDSTUFFS PRICES (DOLLARS PER TON-BULK BASIS)

Area	Soybean Hulls Pellets	Soybean Meal 46.5-48%	Corn Gluten Pellets 21%	Wheat Middlings
Kansas City	230.00	509.10	310.67	198.33
St. Louis	n/a	n/a	305.00	180.00

LIVESTOCK SLAUGHTER

Commercial red meat production for the United States totaled 4.77 billion pounds in January, up 4 percent from the 4.56 billion pounds produced in January 2022.

Beef production, at 2.33 billion pounds, was 3 percent above the previous year. Cattle slaughter totaled 2.83 million head, up 5 percent from January 2022. The average live weight was down 18 pounds from the previous year, at 1,380 pounds.

Veal production totaled 4.4 million pounds, 4 percent below January a year ago. Calf slaughter totaled 30,600 head, 5 percent below January 2022. The average live weight was up 2 pounds from last year, at 249 pounds.

Pork production totaled 2.43 billion pounds, 6 percent above the previous year. Hog slaughter totaled 11.1 million head, 7 percent above January 2022. The average live weight was down 1 pound from the previous year, at 293 pounds.

Lamb and mutton production, at 10.2 million pounds, was 3 percent above January 2022. Sheep slaughter totaled 162,800 head, 6 percent above last year. The average live weight was 123 pounds, down 4 pounds from January a year ago.

CATTLE ON FEED

United States Cattle on Feed Down 4 Percent

Cattle and calves on feed for the slaughter market in the United States for feedlots with capacity of 1,000 or more head totaled 11.7 million head on February 1, 2023. The inventory was 4 percent below February 1, 2022.

Placements in feedlots during January totaled 1.93 million head, 4 percent below 2022. Net placements were 1.87 million head. During January, placements of cattle and calves weighing less than 600 pounds were 405,000 head, 600-699 pounds were 420,000 head, 700-799 pounds were 540,000 head, 800-899 pounds were 402,000 head, 900-999 pounds were 100,000 head, and 1,000 pounds and greater were 65,000 head.

Marketings of fed cattle during January totaled 1.85 million head, 4 percent above 2022.

Other disappearance totaled 63,000 head during January, 2 percent below 2022.

Cattle on Feed and Annual Size Group Estimates

Cattle and calves on feed for slaughter market in the United States for feedlots with capacity of 1,000 or more head represented 82.5 percent of all cattle and calves on feed in the United States on January 1, 2023. This is comparable to the 81.9 percent on January 1, 2022.

Marketings of fed cattle for feedlots with capacity of 1,000 or more head during 2022 represented 87.2 percent of total cattle marketed from all feedlots in the United States, up slightly from 87.2 percent during 2021.

MISSOURI WEEKLY HAY SUMMARY 02/23/23

As February ticks away and a few signs of the approaching spring can be seen, the hay market is starting to slow. Although there are still sales taking place and still some potential buyers looking a lot of folks have anticipated hay needs covered for the rest of the feeding season. A few listings of decent quality hay have showed up at lower prices as folks seem to be looking to move inventory they have held on to for whatever reason. This is however an exception as most prices remain steady and many are willing to hold on to any extra inventory, especially if they have livestock, not knowing what the coming year will bring. The supply of hay is light, demand is moderate and prices are steady. The Missouri Department of Agriculture has a hay directory visit <http://mda.mo.gov/abd/haydirectory/> for listings of hay <http://agebb.missouri.edu/haylst/>

Alfalfa - Supreme 250.00-300.00, small square 10.00-15.00 per bale

Alfalfa - Premium 180.00-250.00

Alfalfa - Good 150.00-180.00, small square 5.00-9.00 per bale

Alfalfa - Fair 125.00-150.00

Alfalfa/grass mix - Good/Premium small square 5.00-9.00 per bale

Mixed grass - Good/Premium 125.00-175.00

Mixed grass - Fair/Good 100.00-150.00, small square 5.00-8.00 per bale

Mixed grass - Fair 50.00-100.00 per large round bale

Corn stalk - 35.00-55.00 per round bale

Wheat straw - 4.00-7.00 per small square bale

Please Note: The above volumes (tonnage, acres, and bales) listed on this USDA LPGMN report are for confirmed trades only, it does not include estimated volume (tonnage) for bids or offers to the trade.

The current hay directory can be found at: Hay Directory

List your hay for sale at: Hay Listing Online Form

Explanation of Hay Quality Guidelines: Hay Quality Designation Guidelines

Glossary of Terms: Livestock, Poultry, and Grain Hay Terms

MISSOURI WEEKLY SHEEP/GOAT AUCTION SUMMARY

02/27/23

Receipts: 1526 Week Ago: 566 Last Year: 727

SHEEP: Feeder lambs Medium and Large 1-2 hair 11 hd 29 lbs 335.00; 30-40 lbs 315.00-340.00; 40-50 lbs 285.00-320.00; 50-60 lbs 277.50-320.00. Slaughter lambs Choice and Prime 1-3 hair 50-70 lbs 287.50-330.00; pkg 80 lbs 237.50. Choice 1-3 hair pkg 58 lbs 267.50. Slaughter ewes Utility and Good 1-3 [lg 160 lbs 100.00. Good 2-3 hair pkg 135 lbs 145.00. Utility and Good 1-3 120-140 lbs 100.00-120.00. Utility and Good 1-3 105-140 lbs 95.00-145.00/hd. Cull and Utility 1-2 pkg 105 lbs 80.00. Cull and Utility 1-2 16 hd 82 lbs 65.00/hd; 120-130 lbs 75.00-100.00/hd. Bucks 1-2 hair 115-140 lbs 100.00-125.00.

Replacements ewes Small and Medium 1-2 hair pkg 2-4 yrs 116 lbs exp 135.00. Small and Medium 1-2 2-4 yrs 125-145 lbs exp 155.00-170.00/hd; 2-4 yrs pkg 137 lbs spr 160.00/hd; 4-6 yrs pkg 175 lbs exp 210.00/hd. Families: Small and Medium 1-2 2-4 yrs 100-120 lbs exp with <20 lb lambs 170.00-360.00/family; 4-6 yrs 100-120 lbs exp with <20 lb lambs 130.00-345.00/family. Small and Medium 1-2 2-4 yrs 100-120 lbs exp with 20-40 lb lambs 250.00-405.00/family; 4-6 yrs 100-120 lbs exp 160.00-275.00 per family.

GOATS: Feeder kids Selection 1 30-40 lbs 317.50-342.50, replacements 6 hd 380.00; 40-50 lbs 325.00-375.00, fancy 29 hd 400.00. Selection 3 pkg 38 lbs 132.50. Wether kids Selection 2 pkg 41 lbs 300.00. Slaughter kids Selection 1 50-60 lbs 335.00-392.50, fancy pkg 440.00; 60-70 lbs 330.00-375.00, high dressing 365.00. Selection 2 50-70 lbs 270.00-320.00, pygmies 285.00; pkg 71 lbs 270.00; 80-90 lbs 257.50-275.00. Slaughter nannies/does Selection 1-2 pkg 50 lbs pygmies 295.00; pkg 82 lbs 225.00. Selection 1-2 pkg 92 lbs 180.00/hd. Selection 2-3 pkg 76 lbs thin 100.00. Slaughter bucks/billies Selection 1-2 pkg 142 lbs 210.00. Wether kids Selection 2 pkg 66 lbs 282.50. Replacement nannies/does Selection 1-2 1-2 yrs 75-85 lbs exp 255.00/hd; 4-6 yrs 105-110 lbs exp 220.00-260.00/hd. Families Selection 1-2 2-4 yrs 85-90 lbs exp <20 lb lambs 280.00-300.00/family; 2-4 yrs pkg 105 lbs exp with <20 lb lambs 260.00/ family.

Explanatory Notes: Stage - Represents estimated lambing/kidding period (Open, Exp=exposed, Bred, Fall = Sep-Nov, Win = Dec-Feb, Spr = Mar-May, Sum=Jun-Aug; w/s = woolled and shorn; /hd= per head; All price CWT unless otherwise noted.

MISSOURI DROUGHT MONITOR

Date	None	D0	D1	D2	D3	D4
02/21/23	88.82	9.60	1.58	0	0	0
02/14/23	86.20	11.98	1.44	0.38	0	0
02/22/22	68.39	31.61	0	0	0	0

Reflects percentage of Missouri impacted by drought.

D0 Abnormally Dry; D1 Moderate Drought; D2 Severe Drought; D3 Extreme Drought; D4 Exceptional Drought

NATIONAL DIRECT DELIVERED FEEDER PIG REPORT

02/17/23 Receipts: 68,454 Week ago: 86,680 Year Ago: 70,460
Early weaned pigs 3.00/hd lower. Feeder pigs 8.00/hd lower.
Early weaned pigs 10-12 lbs. basis: Cash 20,500 head 50.00-73.00, weighted average 61.21. Formula 35,319 head 47.78-68.15, weighted average 55.86. Feeder pigs 40 pounds basis: Cash 11,735 head 63.00-93.00, weighted average 82.78. Formula 900 head 94.80.

NATIONAL DAILY DIRECT PRIOR DAY HOG REPORTS FOR 02/24/23

BARROWS AND GILTS (Carcass Basis): 8,055 head
Base Carcass Price 69.00-80.00, weighted average 77.47

SOWS (Live Basis): 6,734 head
300-500 lbs. 24.00-77.00
Over 500 lbs. 52.50-77.00

MISSOURI WEEKLY DIRECT SLAUGHTER CATTLE REPORT 02/24/23

Weekly Receipts: 600 Week ago: 320 Year ago: 240
Trade as of Friday morning: trade is light to moderate with flat dressed sales 3.00 to 6.00 higher. Grid dressed sales 6.00 higher than last week's reported late Friday sales.

LIVE STEERS & HEIFERS: **DRESSED STEERS & HEIFERS:**
No sales reported 5 loads Thu flat 260.00

GRADE AND WEIGHT (Grid): 4 loads late last Fri 264.00; 7 loads Thu 270.00

Click here for the current [National Crop Progress](#)
Click here for the current [Missouri Crop Progress](#)