

Weekly Market Summary

Published by:
Missouri Department of Agriculture
Ag Business Development Division
Market News Program



Chris Chinn, Director
 Jill Wood, Division Director
 Tony Hancock, Editor
[agmarketnews.mo.gov](http://www.ams.usda.gov/marketnews.htm)
<http://www.ams.usda.gov/marketnews.htm>

Michael L. Parson, Governor

Volume XLIII, Number 18 ♦ P.O. Box 630, Jefferson City, MO 65102 ♦ (573) 751-4211 ♦ Monday, May 8, 2023

MISSOURI WEEKLY FEEDER CATTLE WEIGHTED AVERAGE REPORT

Receipts: 36,132 Week ago: 28,085 Year ago: 25,883

Steers and Heifers Medium and Large 1—Weighted average weights and prices

STEERS: Medium and Large 1

280 lbs. 275.19	476 lbs. 272.40	671 lbs. 227.36	873 lbs. 196.14
329 lbs. 280.01	522 lbs. 266.54	727 lbs. 210.25	915 lbs. 189.70
377 lbs. 288.77	569 lbs. 253.31	763 lbs. 209.25	972 lbs. 187.42
425 lbs. 277.56	625 lbs. 236.92	822 lbs. 201.53	1023 lbs. 181.10

HEIFERS: Medium and Large 1

295 lbs. 239.93	470 lbs. 235.48	675 lbs. 199.72	1010 lbs. 158.00
327 lbs. 251.08	524 lbs. 226.39	713 lbs. 202.34	
379 lbs. 245.26	571 lbs. 220.00	759 lbs. 189.73	
427 lbs. 241.92	625 lbs. 208.88	814 lbs. 183.113	

MISSOURI STEER (HEIFER) STOCKER FORMULA 05/08/2023

Monday's Missouri Stocker Formula consists of **8568 (7894)** head with a weighted average weight of **526.98 (518.13)** lbs. and a price value of **253.07 (221.04)**, 1.21 lower (0.14 lower) than last week.

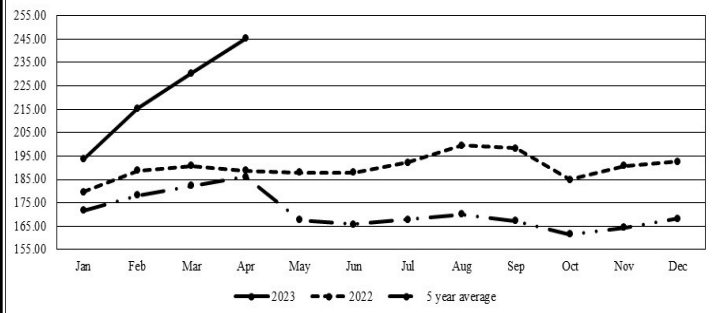
This a rolling seven day calculated weighted value which combines all Feeder Steers reported by MDA/USDA Market News Service weighing from 400-649 lbs. in the Medium and Large 1 and Medium and Large 1 -2 frame and muscle classifications, including all comment cattle except Brahman X. Heifer values are in parentheses.

MISSOURI WEEKLY CATTLE AUCTION SUMMARY

Compared to last week, feeders sold unevenly steady as outside forces weighted in on livestock markets and much of the Ag sector. A very mixed week as many markets quoted lower prices and overall trade did lean lower, but that's not to say everything was in the red. There was some packages and load lots that were unarguably higher at various markets though out the week. Pressure came in heavy on Tuesday though, as more banking issues were in the media and another increase in the federal interest rate was announced. Fundamental factors of supply and demand were simply out weighted by economic worries and continued uncertainty. Weather is also having an effect. The supply of feeders was heavy for the current time of year and demand was moderate. Dryness has brought a lot of new crop calves to market early and has retuned some to be sold an additional time as pastures just have not produced thus far. Several cow sales have seen much larger than usual volume with many cows even at replacement auctions not finding a lot of options to return to the farms. Near 55 percent of the state is now listed in the drought monitor and many in areas not listed will argue that the tracking is behind and not keeping up with the real situation. That being said much of the northern 1/3 of the state saw severe weather over the weekend receiving rain and very damaging hail that in more than a few spots met or exceeded the size of baseballs. A very small band of heavy rain fell over an isolated area in SW MO but it was far from widespread. A few of the stick out sales this week included several drafts of 15-20 head of heavy four or light five weights which sold Monday at Tina Livestock Market and all pushed hard right up near that 300.00 mark. Callaway Livestock Center sold a full load of 661 lb. steers for 259.25 and another part load of lighter six weights at 265.00. Multiple loads of eight weights at different locations sold within a blink on either side of the 200.00 mark with two loads of 815 and 825 lb. steers at Green City Livestock Market both selling at 209.60. Three of the five largest strings of cattle this week were light seven weight heifers that that totaled 670 head and sold from 202.50 to 207.25. Boxed beef cutouts were slightly lower for the week. Choice closed at 309.19, down 2.26 and select closed at 288.16, down 0.18 compared to last Friday. Negotiated feedlot sales as of Friday afternoon was just over 84K head the market continues to lose ground. Live sales were reported from 172.00-178.00 and dressed sales 281.00. The Missouri Stocker Formula consist of 8568 head with a weighted average weight of 526.98 lbs. and a price value of 253.07, 1.21 lower than last week. The steer/heifer spread is 32.03.

The Weekly Market Summary, as well as historical summaries, are available on our website <https://agmarketnews.mo.gov/summaries>
 Market News Hotline: 1-573-522-9244

Missouri Stocker Formula - Steers

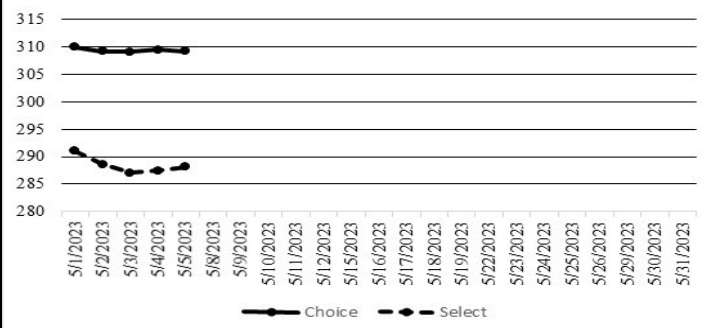


*Graph is updated the first Monday of each month. Axis value ranges may be updated to reflect data points.

NATIONAL BOXED BEEF CUTOUT/BOXED BEEF CUTS

DATE	CHOICE	SELECT	TOTAL LOADS
05/01	310.02	291.00	78
05/02	309.24	288.66	125
05/03	309.09	287.12	92
05/04	309.52	287.49	129
05/05	309.19	288.16	89
5 Day Simple Average	309.41	288.49	

Boxed Beef Cuts May 2023



*Axis value ranges may be updated to reflect data points.

WEEKLY LIVESTOCK SLAUGHTER 05/06/23

	CATTLE	HOGS	SHEEP
Week to Date:	623,000	2,447,000	35,000
Last Week:	624,000	2,387,000	34,000
Last Year:	661,000	2,405,000	31,000

SOUTHWEST MISSOURI WEEKLY SUMMARY

(Joplin and Springfield)

Receipts: 12,792 Week ago: 11,565 Year ago: 9,917

Compared to last week, early week steers 2.00 to 4.00 higher and heifers steady, late week steer calves 3.00 to 5.00 lower, yearlings mostly steady and heifers 3.00 to 7.00 lower. Slaughter cows and bulls steady to 2.00 lower.

FEEDER STEERS:
Medium and Large 1

300-400 lbs.	260.00-300.00
400-500 lbs.	250.00-285.00
500-600 lbs.	232.00-272.00
600-700 lbs.	212.00-248.00
700-800 lbs.	187.00-216.00
800-900 lbs.	192.00-204.00
900-950 lbs.	189.00-194.00

FEEDER HEIFERS:
Medium and Large 1

300-400 lbs.	226.00-270.00
400-500 lbs.	215.00-242.00
500-600 lbs.	190.00-233.00
600-700 lbs.	192.50-215.00
700-800 lbs.	177.50-204.00
800-850 lbs.	183.50-185.25
11 hd 1010 lbs.	158.00

FEEDER HOLSTEIN STEERS
Large 3

Scarce Scarce

SLAUGHTER COWS: Breaking and Boning (70-85% lean) 83.00-96.00, high dressing 94.00-105.50; low dressing 71.00-86.00. Lean (85-90%) 72.00-86.00

SLAUGHTER BULLS: Yield Grade 1-2 1150-2465 lbs. 101.00-118.00; high dressing 115.00-133.00; low dressing 84.00-103.00

BRED COWS: Medium and Large 1 2-8 yrs 1085-1430 lbs 2nd to 3rd stage 1400.00-1700.00, fancy 1950.00. Medium and Large 1-2 2-8 yrs 940-1360 lbs 1st to 3rd stage 1000.00-1350.00; >8 yrs 1188-1220 lbs 2nd to 3rd stage 1050.00-1220.00 per head
BRED HEIFERS: Medium and Large 1-2 <2 790-970 lbs 2nd to 3rd stage 950.00-1375.00 per head

COW & CALF PAIRS: Medium and Large 1 2-4 yrs 1025-1070 lbs with 150-300 lb calves 2300.00-2700.00; 9 pairs 2-4 yrs 1070 lbs rebred 2nd stage with >300 lb calves 3000.00. Medium and Large 1-2 2-4 yrs 1090-1105 lbs with 150-300 lb calves 2150.00-2700.00; 2-8 yrs 910-1180 lbs with <150 to 300 lb calves 1300.00-2050.00 per pair

SOUTH CENTRAL MISSOURI WEEKLY SUMMARY

(West Plains, Phillipsburg)

Receipts: 5,050 Week ago: 4,871 Year Ago: 3,265

Compared to last week, early week calves steady to 5.00 higher and yearlings steady to weak, late week steers and heifers steady to 5.00 lower. Slaughter cows steady to 2.00 higher. Slaughter bulls steady.

FEEDER STEERS:
Medium and Large 1

400-500 lbs.	245.00-284.00
500-600 lbs.	237.50-276.00
600-700 lbs.	222.00-240.00
700-750 lbs.	217.00-218.00
10 hd 850 lbs.	190.00

FEEDER HEIFERS:
Medium and Large 1

300-400 lbs.	230.00-255.00
400-500 lbs.	221.50-251.00
500-600 lbs.	201.00-233.00
600-650 lbs.	192.00-216.00
31 hd 764 lbs.	188.00
Pkg 800 ;lbs.	184.50

FEEDER HOLSTEIN STEERS
Large 3

Scarce Scarce

SLAUGHTER COWS: Breaking and Boning (70-85% lean) 85.00-96.50, high dressing 95.00-105.00; low dressing 74.00-86.00. Lean (85-90%) 70.00-86.00

SLAUGHTER BULLS: Yield Grade 1-2 1225-2160 lbs. 105.00-118.00; high dressing 118.00-135.00; low dressing 80.00-104.00

BRED COWS: Medium and Large 1-2 2-8 yrs 632-1415 lbs 2nd to 3rd stage 1000.00-1575.00, 1st stage 1000.00-1200.00; >8 yrs pkg 1252 lbs 2nd to 3rd stage 1250.00 per head

COW & CALF PAIRS: Medium and Large 1 couple 2-8 yrs 1290-1855 lbs with 150-300 lb calves 2000.00-2125.00. Medium and Large 1-2 2-8 yrs 1275-1300 lbs with >300 lb calves 1900.00-2100.00 per pair

BRED HEIFERS: Medium and Large 1-2 <2 yrs pkg 995 lbs 2nd to 3rd stage 1200.00 per head

WEST CENTRAL MISSOURI WEEKLY SUMMARY

(Kingsville, Windsor, Butler)

Receipts: 8,496 Week ago: 6,148 Year ago: 5,263

Compared to last week, steers and heifers unevenly steady from 5.00 lower to 5.00 higher. Slaughter cows mostly steady.

FEEDER STEERS:
Medium and Large 1

400-500 lbs.	248.50-303.00
500-600 lbs.	234.00-274.50
600-700 lbs.	210.00-244.00
700-800 lbs.	196.00-220.00
800-900 lbs.	172.50-200.00
950-1000 lbs.	182.10-190.00
59 hd 1023 lbs.	181.10

FEEDER HEIFERS:
Medium and Large 1

400-500 lbs.	219.00-251.50
500-600 lbs.	205.00-240.50
600-700 lbs.	188.00-228.00
700-800 lbs.	176.00-207.75
Pkg 833 lbs.	170.00

SLAUGHTER BULLS: Yield Grade 1-2 1220-2005 lbs 106.00-125.00; high dressing 126.00-134.00; couple low dressing 105.50-106.00

SLAUGHTER COWS: Breaking and Boning (70-85% lean) 83.00-101.00, high dressing 93.00-111.00; low dressing 75.00-88.00. Lean (85-90%) 71.00-88.00

BRED COWS: Medium and Large 1-2 pkg 2-4 yrs 1197 lbs 3rd stage 1400.00; 5-8 yrs 1205-1335 lbs 2nd to 3rd stage 1130.00-1275.00 per head

COW & CALF PAIRS: Scarce

NORTHEAST MISSOURI WEEKLY SUMMARY

(Bowling Green, Kingdom City, Palmyra)

Receipts: 7,616 Week ago: 5,489 Year ago: 5,425

Compared to last week, steers 400-600 lbs steady to firm, 600-700 lbs 5.00 to 8.00 higher, over 700 lbs higher undertone. Heifers 400-500 lbs steady to spots 3.00 higher, 500-600 lbs 5.00 to 8.00 higher, over 600 lbs higher undertone. Slaughter cows steady to firm.

FEEDER STEERS:
Medium and Large 1

300-400 lbs.	280.00-306.00
400-500 lbs.	262.50-303.00
500-600 lbs.	241.00-288.00
600-700 lbs.	217.50-253.00
700-800 lbs.	198.50-234.00
800-850 lbs.	190.50-199.75
900-950 lbs.	178.00-192.50

FEEDER HEIFERS:
Medium and Large 1

300-400 lbs.	250.00-267.50
400-500 lbs.	230.00-256.00
500-600 lbs.	210.00-246.50
600-700 lbs.	207.00-227.00
700-750 lbs.	194.50-200.00

SLAUGHTER BULLS: Yield Grade 1-2 1425-2175 lbs 110.00-129.00; high dressing 123.00-136.50

SLAUGHTER COWS: Breaking and Boning, (70-85% lean) 89.00-98.00; high dressing 98.00-108.00; low dressing 77.00-90.00. Lean (85-90%) 81.00-89.00

SLAUGHTER STEERS: Choice and Prime 2-4 183.00-184.50. Choice 2-3 174.00-182.00. Select and Choice 1-3 170.00-175.00.

SLAUGHTER HEIFERS: Choice 2-3 174.00-180.00. Select and Choice 1-3 170.00-172.50. Select and Choice 2-3 156.00-162.00. Select 1-2 165.00-167.00.

BRED COWS: Medium and Large 1-2 2-4 yrs 1178 lbs 2nd stage 1775.00; 2-8 yrs 851-1396 lbs 2nd to 3rd stage 1360.00-1585.00, 1st stage 1200.00-1375.00 per head

COW/CALF PAIRS: Medium and Large 1 2-8 yrs 950-1350 lbs with 150-300 lb calves 2000.00-2300.00; >5 yrs 1350 lbs with 150-300 lb calves 1800.00 per pair

NORTH CENTRAL MISSOURI WEEKLY SUMMARY

(Macon, Unionville, Green City, New Cambria)

Receipts: 3,941 Week ago: 2,241 Year ago: 5,361

Compared to last week, steers and heifers mostly steady to firm on comparable sales. Slaughter cows 1.00 to 3.00 lower.

*Some sale barns on a bi-weekly schedule and may not have a sale each week.

FEEDER STEERS:
Medium and Large 1

400-500 lbs.	260.00-312.00
500-600 lbs.	252.00-286.00
600-700 lbs.	219.50-245.00
700-800 lbs.	206.00-214.00
800-900 lbs.	200.10-209.60

FEEDER HEIFERS:
Medium and Large 1

400-500 lbs.	235.50-264.00
500-600 lbs.	209.00-243.75
600-700 lbs.	195.00-214.50
700-750 lbs.	202.00-202.50

SLAUGHTER BULLS: Yield Grade 1-2 1525-1905 lbs 107.00-119.00

SLAUGHTER COWS: Breaking and Boning, (70-85% lean) 80.00-97.00; high dressing 94.50-109.50. Lean (85-90%) 67.00-88.00

BRED COWS: Medium and Large 1-2 9 hd 2-8 yrs 1050 lbs 2nd stage 1550.00. Large 1-2 2-8 yrs 1020-1200 lbs 2nd stage 1185.00-1300.00; >5 yrs 1230-1245 lbs 1st to 2nd stage 1185.00 per head

COW & CALF PAIRS: Scarce

SOUTHEAST MISSOURI WEEKLY SUMMARY

(Jackson and Farmington)

Receipts: 1,730 Week ago: 1,420 Year ago: 1,952
 Compared to last week, steers 2.00 to 7.00 higher and heifers steady to 10.00 higher. Slaughter cows and bulls steady to 2.00 higher.

FEEDER STEERS:

Medium and Large 1

300-400 lbs. 250.00-283.00
 400-500 lbs. 241.00-280.00
 500-600 lbs. 228.00-257.00
 600-700 lbs. 199.00-232.00
 700-800 lbs. 172.00-194.00
 800-850 lbs. 182.00-188.00

FEEDER HEIFERS:

Medium and Large 1

300-400 lbs. 208.00-240.00
 400-500 lbs. 191.00-240.00
 500-600 lbs. 180.00-220.00
 600-700 lbs. 179.00-201.00
 700-800 lbs. 170.00-182.00
 800-850 lbs. 160.00-183.00

SLAUGHTER BULLS: Yield
 Grade 1-2 1340-2370 lbs. 90.00-99.50; high dressing 105.50-120.00

SLAUGHTER COWS: Breaking and Boning (75-85% lean) 74.00-89.00; high dressing 87.00-100.00. Lean (85-90% lean) 56.00-75.00

BRED COWS: Medium and Large 2 2-8 yrs 1130-1215 lbs 2nd stage 885.00-1200.00, couple 3rd stage 1000.00-1500.00 per head

COW & CALF PAIRS: Scarce

EAST CENTRAL MISSOURI WEEKLY SUMMARY

(Cuba, Vienna)

Receipts: 3,945 Week ago: 2,037 Year ago: 2,804
 Compared to last week, steers steady to 3.00 lower and heifers steady to 3.00 higher. Slaughter cows steady to 1.00 lower.

FEEDER STEERS:

Medium and Large 1

300-400 lbs. 240.00-287.50
 400-500 lbs. 242.00-287.00
 500-600 lbs. 241.00-278.50
 600-700 lbs. 217.00-252.00
 700-800 lbs. 203.00-218.00

FEEDER HEIFERS:

Medium and Large 1

300-400 lbs. 231.00-260.00
 400-500 lbs. 225.00-260.00
 500-600 lbs. 207.00-246.00
 600-700 lbs. 205.00-217.50
 700-750 lbs. 187.50-201.00

SLAUGHTER BULLS: Yield
 Grade 1-2 1310-2150 lbs. 107.50-120.00; few high dressing 120.00-127.00; few low dressing 105.00-108.00

SLAUGHTER COWS: Breaking and Boning, (70-85% lean) 87.00-98.00; high dressing 95.00-100.50; low dressing 84.00-87.00. Lean (85-90%) 79.50-89.00

BRED COWS: Scarce

COW & CALF PAIRS: Scarce

NORTHWEST MISSOURI WEEKLY SUMMARY

(Tina)

Receipts: 1,798 Two Weeks ago: 1,887
 Compared to two weeks ago, feeders under 550 lbs sharply higher, over 500 lbs 2.00 to 5.00 higher. Slaughter cows 2.00 to 4.00 lower.

FEEDER STEERS:

Medium and Large 1

350-400 lbs. 312.50-326.00
 400-500 lbs. 275.00-306.00
 500-600 lbs. 250.00-297.50
 600-700 lbs. 230.00-259.00

FEEDER HEIFERS:

Medium and Large 1

Pkg 377 lbs. 253.00
 400-500 lbs. 234.00-265.00
 500-600 lbs. 212.00-246.00
 600-700 lbs. 210.00-215.00
 Pkg 725 lbs. 196.00

SLAUGHTER BULLS: Yield
 Grade 1-2 1530-2235 lbs 116.00-122.00.

SLAUGHTER COWS: Breaking and Boning, (70-85% lean) 83.00-98.00. Lean (85-90%) 75.00-86.00

BRED COWS: Medium and Large 1 2-4 yrs 1154-1217 lbs 2nd stage 1925.00-2000.00; 2-8 yrs 1212-1287 lbs 2nd stage 1775.00-1950.00 per head. Medium and Large 1-2 2-8 yrs 1220-1365 lbs 2nd to 3rd stage 1550.00-1950.00 per head

COW & CALF PAIRS: Medium and Large 1-2 2-4 yrs 925-1150 lbs with <150-300 lb calves 2450.00-2550.00; 2-4 yrs 930-1100 lbs rebred 2nd stage with >300 lb calves 2400.00-3000.00; 2-8 yrs 1025-1250 lbs few rebred 2nd stage with <150 lb calves 2300.00-2500.00 per pair

AFTERNOON NATIONAL SLAUGHTER CATTLE REVIEW

So far for Friday in all regions negotiated cash trading has been mostly inactive on light demand. Not enough purchases in any region for a market trend. In the Southern Plains the last reported market was on Tuesday with live purchases at 172.00. In Nebraska the last reported market was on Wednesday with live and dressed purchases at 176.00 and at 281.00, respectively. In the Western Cornbelt the last reported live purchase market was on Tuesday from 172.00-178.00. The most recent reported dressed purchase market was last week at 285.00.

Negotiated Cash Sales:

Confirmed:	2,749	Week Ago:	14,814	Year Ago:	3,896
Week to date:	84,373	Week Ago:	73,699	Year Ago:	107,462

<u>Live Basis</u>	<u>Steers</u>	<u>Heifers</u>
Over 80% Choice	171.00-175.00, avg 173.00	171.00-174.00, avg 172.37
65-80% Choice	171.00	-
35-65% Choice	-	-
0-35% Choice	-	-
Total All Grades	171.00-175.00, avg 172.85	171.00-174.00, avg 172.37
<u>Dressed Basis</u>		
Over 80% Choice	279.00	-
65-80% Choice	-	-
35-65% Choice	-	-
0-35% Choice	-	-
Total All Grades	279.00	-

<u>All Beef Type Steers/Heifers</u>	<u>Head</u>	<u>Avg Wt</u>	<u>Price Range</u>	<u>Wtd Avg</u>
Live FOB	1954	1402	168.00-178.00	173.87
Live Del	590	1480.6	173.00-180.00	175.92
Dressed Del	169	813.2	272.00-279.00	274.20
Dressed FOB	36	793	262.00	262.00

WEEKLY COMMODITY FUTURES TRENDS

Compared to last week, Live Cattle 3.20 to 4.27 lower, Lean Hogs 4.13 to 8.30 lower, Feeder Cattle 7.52 to 9.30 lower.

Daily Futures Closes

	Mon.	Tues.	Wed.	Thu.	Fri.
Cattle					
Jun	164.87	162.90	161.65	161.57	161.92
Aug	162.65	160.95	159.55	159.42	159.50
Oct	167.00	165.30	164.00	163.85	163.57
Dec	171.22	169.72	168.52	168.55	168.15
Feb	175.15	173.57	172.45	172.55	172.35
Lean Hogs					
May	79.30	78.17	78.15	77.07	75.52
Jun	89.70	89.95	88.00	87.15	83.77
Jul	91.30	91.42	89.32	88.25	85.42
Aug	92.65	92.50	89.32	89.55	86.37
Oct	82.97	82.70	90.50	80.77	78.40
Fdr Cat					
May	209.70	205.95	203.42	203.65	202.52
Aug	230.10	226.17	223.52	223.15	221.42
Sep	233.07	229.27	226.75	226.67	225.05
Oct	234.65	230.77	228.52	228.62	227.50
Nov	234.95	231.12	228.97	229.22	228.55
Milk					
May	16.60	16.65	16.76	16.68	16.57
Jun	17.05	16.97	17.08	17.06	16.99
Jul	17.70	17.74	17.84	17.77	17.76

WEEKLY COMMODITY GRAIN FUTURES TRENDS

Compared to last week, Soybeans 0.11 to 0.25 higher, Wheat 0.23 to 0.28 higher, Corn 0.05 to 0.17 higher, KC Wheat 0.40 to 0.72 higher, Soybean Meal 6.30 to 9.20 lower.

Daily Grain Futures Closes

	Mon.	Tues.	Wed.	Thu.	Fri.
Soybeans					
May	1454 3/4	1439 1/2	1448	1448 1/2	1469
Jul	1427 1/2	1410 3/4	1417 1/2	1417 3/4	1436 1/2
Aug	1370 1/2	1358 1/4	1361 3/4	1358 1/2	1373 1/2
Sep	1295	1288	1292 3/4	1287 3/4	1299 3/4
Nov	1275	1267 1/4	1272 1/4	1268 1/2	1280
Wheat					
May	603 3/4	595 1/2	626 1/4	631 1/2	647
Jul	618 1/4	609 1/4	639 3/4	645	660 1/4
Sep	630	620 1/2	650 3/4	656 3/4	671 1/2
Dec	647 3/4	637 3/4	666 3/4	673 3/4	687 1/4
Mar	660 1/2	650 1/2	678	684 3/4	697 1/2
Corn					
May	639 1/2	638	645 1/4	646 1/2	653 1/4
Jul	584 1/2	580	588 1/2	589	596 1/2
Sep	523 3/4	520 3/4	531 3/4	529 1/2	537
Dec	525 1/4	519 3/4	530 1/2	528 1/2	534 3/4
Mar	535 1/4	530	540 1/2	538 1/4	543 1/2
KC Wheat					
May	788 1/4	771 1/4	828	845	879 3/4
Jul	757 1/4	740 1/4	785	798 1/4	833
Sep	755 1/4	735 3/4	778	791 1/2	824
Dec	759 1/4	738 3/4	778 1/2	791 3/4	821 1/4
Mar	762	741 1/4	779 1/2	782 1/4	819 3/4
SB Meal					
May	435.30	429.80	427.80	427.30	428.90
Jul	433.60	427.90	424.90	424.60	426.10
Aug	427.40	422.00	418.60	417.90	418.60
Sep	417.30	412.00	408.80	407.50	407.10
Oct	409.00	403.40	400.10	398.60	398.10

MISSOURI GRAIN WEEKLY TRENDS

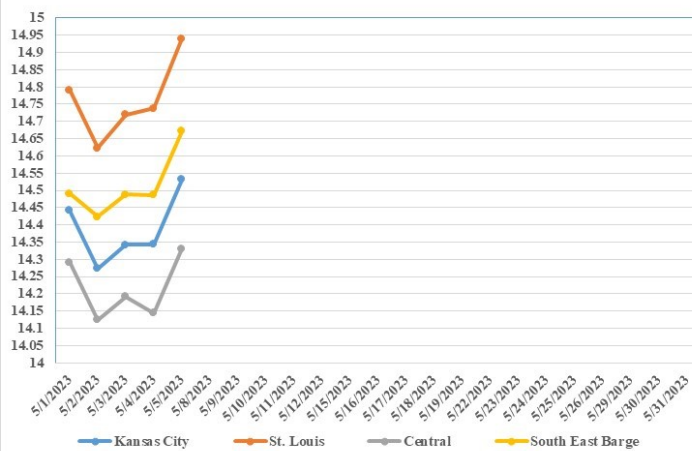
Compared to last week, Soybeans 0.12 to 0.25 higher, Wheat 0.26 to 0.47 higher, Corn 0.12 to 0.16 higher, Sorghum 0.18 lower to 0.11 higher.

Area	#1 Soybeans	#2 Soft Wheat	#2 Corn	#2 Grain Sorghum
Kansas City				
Friday**	14.14-14.44	6.39	6.30-6.47	6.35
Monday	14.28-14.53	6.23	6.30-6.47	6.35
Tuesday	14.11-14.36	6.14	6.25-6.45	6.30
Wednesday	14.18-14.43	6.45	6.34-6.54	6.39
Thursday	14.18-14.43	6.50	6.34-6.54	6.39
Friday	14.37-14.62	6.65	6.42-6.64	6.47
St. Louis				
Friday**	14.70-14.72	6.14-6.23	6.64	7.11
Monday	14.78-14.81	5.98-6.05	6.61-6.67	6.60-7.15
Tuesday	14.61-14.64	5.89-6.05	6.50-6.65	6.55
Wednesday	14.72-14.73	6.20-6.50	6.62-6.70	6.64-6.85
Thursday	14.73-14.75	6.25-6.55	6.66-6.74	6.85
Friday	14.94-14.95	6.40-6.70	6.78-6.80	6.93
Central				
Friday**	14.14-14.24	5.95-6.09	6.35-6.40	---
Monday	14.23-14.33	5.93	6.35-6.40	---
Tuesday	14.06-14.16	5.84	6.25-6.30	---
Wednesday	14.13-14.23	6.15	6.34-6.39	---
Thursday	14.13-14.18	6.20	6.34-6.39	---
Friday	14.32-14.37	6.35	6.42-6.47	---
S.E. MO				
Friday**	14.54-14.59	---	6.35-6.56	---
Monday	14.28-14.68	---	5.85-6.45	---
Tuesday	14.36-14.51	---	6.30-6.40	---
Wednesday	14.43-14.58	---	6.39-6.49	---
Thursday	14.43-14.58	---	6.39-6.49	---
Friday	14.62-14.77	---	6.47-6.51	---

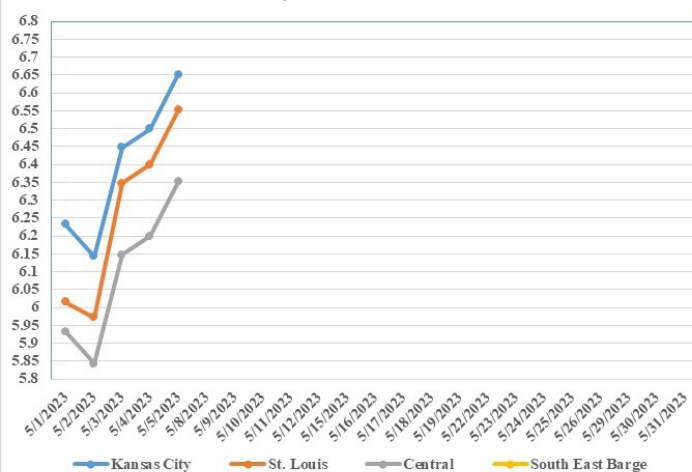
(PRICES PER BUSHEL) *NEW CROP **PREVIOUS WEEK'S PRICES
*Bids calculated using Kansas City, St. Louis, and St. Joseph bids

MONTHLY GRAIN CROP

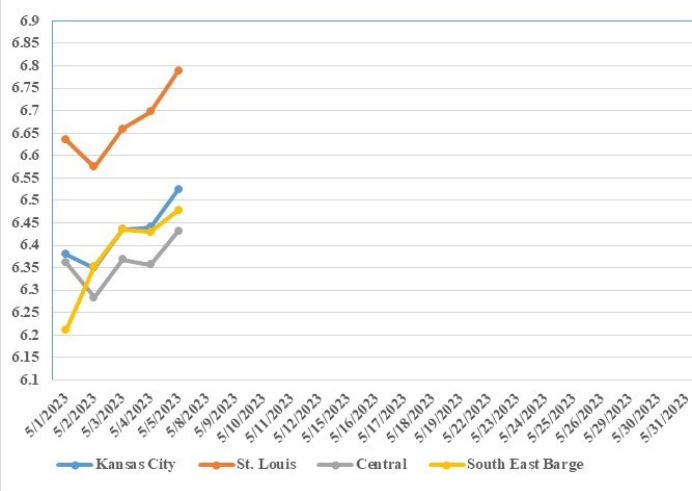
May 2023 Soybean Bids



May 2023 Wheat Bids



May 2023 Corn Bids



*Axis value ranges may be updated to reflect data points.

**WHOLESALE FEEDSTUFFS PRICES
(DOLLARS PER TON-BULK BASIS)**

Area	Soybean Hulls Pellets	Soybean Meal 46.5-48%	Corn Gluten Pellets 21%	Wheat Middlings
Kansas City	183.33	422.10	275.50	166.67
St. Louis	n/a	n/a	256.50	155.00

GRAIN CRUSHINGS AND CO-PRODUCTS PRODUCTION

Total corn consumed for alcohol and other uses was 490 million bushels in March 2023. Total corn consumption was up 11 percent from February 2023 but down 4 percent from March 2022. March 2023 usage included 91.7 percent for alcohol and 8.3 percent for other purposes. Corn consumed for beverage alcohol totaled 5.71 million bushels, up 70 percent from February 2023 and up 32 percent from March 2022. Corn for fuel alcohol, at 438 million bushels, was up 10 percent from February 2023 but down 3 percent from March 2022. Corn consumed in March 2023 for dry milling fuel production and wet milling fuel production was 91.5 percent and 8.5 percent, respectively. **Dry mill co-product production** of distillers dried grains with solubles (DDGS) was 1.70 million tons during March 2023, up 9 percent from February 2023 but down 9 percent from March 2022. Distillers wet grains (DWG) 65 percent or more moisture was 1.30 million tons in March 2023, up 12 percent from February 2023 but down 6 percent from March 2022. **Wet mill corn gluten feed production** was 292,483 tons during March 2023, up 18 percent from February 2023 and up 17 percent from March 2022. Wet corn gluten feed 40 to 60 percent moisture was 187,120 tons in March 2023, up 1 percent from February 2023 but down 18 percent from March 2022.

MISSOURI CROP PROGRESS AND CONDITION 05/01/23

There were 6.1 days suitable for fieldwork during the week ending April 30, 2023. Temperatures last week averaged 53.5 degrees, 5.4 degrees below normal. Precipitation averaged 0.24 inches, 0.79 inches below normal. Topsoil moisture supply rated 5 percent very short, 36 percent short, 57 percent adequate, and 2 percent surplus. Subsoil moisture supply rated 4 percent very short, 30 percent short, 64 percent adequate, and 2 percent surplus. Corn planted was 80 percent complete, compared to the 5-year average of 41 percent. Corn emerged was 31 percent complete, compared to the 5-year average of 9 percent. Soybeans planted was 34 percent complete, compared to the 5-year average of 5 percent. Soybeans emerged was 12 percent complete, ahead of the 5-year average. Cotton planted was 5 percent complete, even with the 5-year average. Rice planted was 73 percent complete, compared to the 5-year average of 37 percent. Rice emerged was 31 percent complete, compared to the 5-year average of 15 percent. Winter wheat headed was 25 percent, compared to the 5-year average of 18 percent. Winter wheat condition rated 0 percent very poor, 6 percent poor, 27 percent fair, 63 percent good, and 4 percent excellent.

	Week Ending			2018-2022 Average
	04/30/23	04/23/23	04/30/22	
Corn Planted	80	58	25	41
Corn Emerged	31	11	3	9
Soybeans Planted	34	16	4	5
Soybeans Emerged	12	2	-	-
Cotton Planted	5	1	7	5
Rice Planted	73	63	4	37
Rice Emerged	31	12	1	15
Winter Wheat Headed	25	12	9	18

MISSOURI WEEKLY HAY SUMMARY 05/04/23

It is said that April showers bring May flowers but April showers were few and far in between. Nearly 55 percent of the state is showing on the latest drought monitor and many in the areas that aren't listed would argue someone needs to come visit them because it is dry. This is far from where anyone wants to be and a very concerning start to the year. There has been some guys cutting and wrapping some hay now trying their best to restock supplies. Grasses like fescue and orchard grass that should be cut in the next month or so and make up most of the states hay stocks are just short and not growing much if at all. Everyone knows the situation in MO can pull a 180 in the blink of an eye and that is what everyone is hoping for because the optimism that was present in early March is fading fast. The supply of hay is light, demand is light to moderate and prices are steady.
 Alfalfa - Supreme 250.00-300.00, small square 10.00-15.00 per bale
 Alfalfa - Premium 180.00-250.00
 Alfalfa - Good 150.00-180.00, small square 5.00-9.00 per bale
 Alfalfa - Fair 125.00-150.00
 Alfalfa/grass mix - Good/Premium small square 5.00-9.00 per bale
 Mixed grass - Good/Premium 125.00-175.00
 Mixed grass - Fair/Good 100.00-150.00, small square 5.00-8.00 per bale
 Mixed grass - Fair 50.00-100.00 per large round bale
 Corn stalk - 35.00-55.00 per round bale
 Wheat straw - 4.00-7.00 per small square bale

Please Note: The above volumes (tonnage, acres, and bales) listed on this USDA LPGMN report are for confirmed trades only, it does not include estimated volume (tonnage) for bids or offers to the trade. The current hay directory can be found at: [Hay Directory](#)
 List your hay for sale at: [Hay Listing Online Form](#)
 Explanation of Hay Quality Guidelines: [Hay Quality Designation Guidelines](#)
 Glossary of Terms: [Livestock, Poultry, and Grain Hay Terms](#)

MISSOURI WEEKLY SHEEP/GOAT AUCTION SUMMARY

Receipts: 1,045 Week Ago: 654 Last Year: 1,258

SHEEP: Feeder lambs Small and Medium 1-2 25-45 lbs 155.00, pkg fancy 205.00. Small and Medium 1-2 hair 25-50 lbs 180.00-220.00, fancy 230.00-240.00.

Slaughter lambs Choice and Prime 1-3 w/s 50-90 lbs 197.50-215.00. Choice and Prime 1-3 hair 50-70 lbs 202.50-225.00; 70-80 lbs 190.00-220.00; 80-110 lbs 175.00-210.00. Choice 1-3 hair 55-85 lbs 175.00-187.50; pkg 90 lbs 130.00. Good 1-2 pkg 77 lbs 150.00. Slaughter ewes Utility and Good 1-3 110-190 lbs 75.00-110.00. Good 2-3 hair 70-130 lbs 120.00-130.00. Utility and Good 1-3 hair 70-125 lbs 80.00-117.50. Cull and Utility 1-2 80-95 lbs 70.00-80.00; pkg 119 lbs 50.00. Bucks 1-2 hair 125-145 lbs. 125.00-135.00.

Replacement ewes Small and Medium 1-2 hair pkg 1-2 yrs 135 lbs exp 140.00; pkg 2-4 yrs 98 lbs exp 152.50.

GOATS: Feeder kids Selection 1 pkg 24 lbs 425.00; 30-50 lbs 320.00-265.00. Selection 2 20-30 lbs 227.00-285.00; 30-45 lbs 245.00-310.00, pygmies 195.00-205.00. Selection 3 25-50 lbs 150.00-220.00, pygmies 185.00.

Slaughter kids Selection 1 50-70 lbs 325.00-385.00. Selection 2 50-60 lbs 265.00-315.00. Slaughter nannies/does 45-65 lbs pygmies 130.00-180.00; 80-90 lbs 115.00-130.00; 90-100 lbs 130.00-145.00; 100-135 lbs 95.00-135.00. Slaughter bucks/billies 1-2 50-60 lbs pygmies 152.50-155.00; 90-135 lbs 125.00-240.00. Wethers Selection 1-2 65-70 lbs pygmies 145.00-155.00; 80-150 lbs 165.00-170.00.

Replacement nannies/does Selection 1-2 1-2yrs exp 90-115 lbs 200.00-230.00; pkg 2-4 yrs 80 lbs exp 220.00. Families Selection 1-2 2-4 yrs 90-100 lbs exp with <20 lb kids 210.00-390.00/family; couple 2-4 yrs 120-125 lbs exp with <20 lb kids 300.00-480.00/family.

Explanatory Notes: Stage - Represents estimated lambing/kidding period (Open, Exp=exposed, Bred, Fall = Sep-Nov, Win = Dec-Feb, Spr = Mar-May, Sum=Jun-Aug; w/s = woolled and shorn; /hd= per head; /fam=per family
 All price CWT unless otherwise noted.

MISSOURI DROUGHT MONITOR

Date	None	D0	D1	D2	D3	D4
05/02/23	45.73	27.58	16.17	10.40	0.12	0
04/25/23	73.08	15.99	10.34	0.59	0	0
05/03/22	99.15	0.49	0	0	0	0

Reflects percentage of Missouri impacted by drought.
 D0 Abnormally Dry; D1 Moderate Drought; D2 Severe Drought; D3 Extreme Drought; D4 Exceptional Drought

NATIONAL DIRECT DELIVERED FEEDER PIG REPORT

05/05/23 Receipts: 97,185 Week ago: 108,340 Year Ago: 65,610
 Early weaned pigs steady. Feeder pigs lower on light supplies.
 Early weaned pigs 10-12 lbs. basis: Cash 57,657 head 4.00-24.00, weighted average 13.86.
 Formula 34,028 head 17.09-50.34, weighted average 35.93.
 Feeder pigs 40 pounds basis: Cash 5,500 head 45.00-58.00, weighted average 53.49

NATIONAL DAILY DIRECT PRIOR DAY HOG REPORTS FOR 05/05/23

BARROWS AND GILTS (Carcass Basis): 4,090 head
 Base Carcass Price 68.00-77.00, weighted average 71.73

SOWS (Live Basis): 6,274 head
 300-500 lbs. 10.00-36.00
 Over 500 lbs. 13.00-35.00

MISSOURI WEEKLY DIRECT SLAUGHTER CATTLE REPORT 05/05/23

Weekly Receipts: 360 Week ago: 640 Year ago: 280
 Trade as of Friday morning: trade is light to moderate with flat dressed sales 5.00 lower. Grid dressed sales 2.00 lower.

LIVE STEERS & HEIFERS: No sales reported
DRESSED STEERS & HEIFERS: 6 loads Tue flat 280.00

GRADE AND WEIGHT (Grid): 3 loads Thu 288.00

Click here for the current [National Crop Progress](#)
 Click here for the current [Missouri Crop Progress](#)