

# Weekly Market Summary

Published by:  
**Missouri Department of Agriculture**  
**Ag Business Development Division**  
**Market News Program**



Chris Chinn, Director  
 Jill Wood, Division Director  
 Tony Hancock, Editor  
<http://www.ams.usda.gov/marketnews.htm>  
<http://www.ams.usda.gov/marketnews.htm>

Michael L. Parson, Governor

Volume XLIII, Number 19 ♦ P.O. Box 630, Jefferson City, MO 65102 ♦ (573) 751-4211 ♦ Monday, May 15, 2023

## MISSOURI WEEKLY FEEDER CATTLE WEIGHTED AVERAGE REPORT

Receipts: 35,718 Week ago: 36,132 Year ago: 23,609  
 Steers and Heifers Medium and Large 1—Weighted average weights and prices

### STEERS: Medium and Large 1

328 lbs. 284.13	523 lbs. 262.56	725 lbs. 216.57	914 lbs. 188.63
378 lbs. 281.45	570 lbs. 248.55	784 lbs. 208.79	
428 lbs. 272.07	621 lbs. 233.76	824 lbs. 200.85	
476 lbs. 266.73	668 lbs. 222.44	858 lbs. 192.09	

### HEIFERS: Medium and Large 1

284 lbs. 251.91	468 lbs. 232.72	675 lbs. 206.74
326 lbs. 245.14	520 lbs. 220.48	729 lbs. 199.23
374 lbs. 241.36	567 lbs. 216.61	767 lbs. 193.98
428 lbs. 234.44	629 lbs. 209.16	882 lbs. 172.02

### MISSOURI STEER (HEIFER) STOCKER FORMULA 05/15/2023

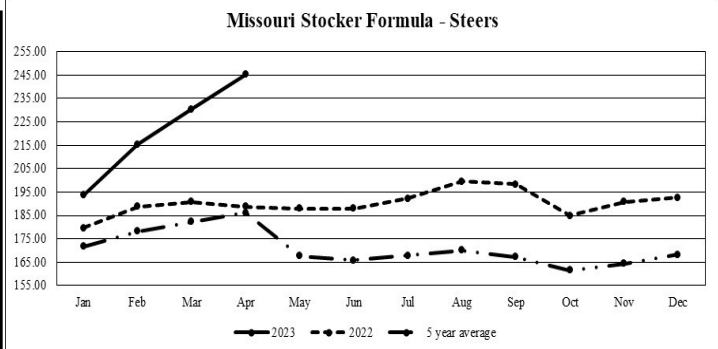
Monday's Missouri Stocker Formula consists of **8398 (7927)** head with a weighted average weight of **532.45 (522.17)** lbs. and a price value of **247.35 (215.38)**, 5.72 lower (5.66 lower) than last week.

This a rolling seven day calculated weighted value which combines all Feeder Steers reported by MDA/USDA Market News Service weighing from 400-649 lbs. in the Medium and Large 1 and Medium and Large 1 -2 frame and muscle classifications, including all comment cattle except Brahman X. Heifer values are in parentheses.

### MISSOURI WEEKLY CATTLE AUCTION SUMMARY

Compared to last week, feeders under 600 lbs. sold 5.00-8.00 lower, steers over 600 lbs. sold steady to 2.00 lower, and heifers over 600 lbs. sold steady to 2.00 higher. There was some instances of course that didn't fit the overall trend but as a whole feeders, especially the calves which are making up the majority of the offering are selling at lower prices. The supply of feeders was moderate to heavy. Many producers are continued to bring calves to town earlier than usual as prices remain good even if they aren't at the same levels as a few weeks ago. Large if not huge runs of cows came to auctions this week as farmers look to conserve grass in any way they can. Moods are more optimistic as this week begins as rains have finally fallen for most everyone in the state. Although amounts varied and cells have been spotty nearly everyone has received some the last week. Issues of dryness and short grass do not just go away overnight however and no one wants to push short pastures before summer actually arrives. Although not as impressive as the last few weeks a few of the top end of sales included a load of 621 lb. steers at Callaway Livestock Center which sold at 241.25. A load of 720 lb. steers sold at Ozark Regional Stockyards brought 223.50 and a two load sale of 168 head of 832 lb. steers sold at Kingsville Livestock Auction for 208.85. The top five weight steers was a small draft of 10 head of 514 lb. steers at Tina Livestock Auction which brought 290.00. Most of the better five weights are falling in the mid 270.00's as anything with a 3 in front doesn't seem to exist anymore. Boxed beef cutouts continued to the downward trend this week. Choice closed at 304.61, down 4.58 and select closed at 284.68, down 3.48 compared to last Friday. Negotiated feedlot sales as of Friday afternoon was just near 77K head, this marks nearly a month of consecutive weeks with disappointing sales. Live sales were reported from 170.00-176.00 and dressed sales 280.00. The Missouri Stocker Formula consist of 8398 head with a weighted average weight of 532.45 lbs. and a price value of 247.35, 5.72 lower than last week. The steer/heifer spread is 31.97.

The Weekly Market Summary, as well as historical summaries, are available on our website <https://agmarketnews.mo.gov/summaries>  
 Market News Hotline: 1-573-522-9244

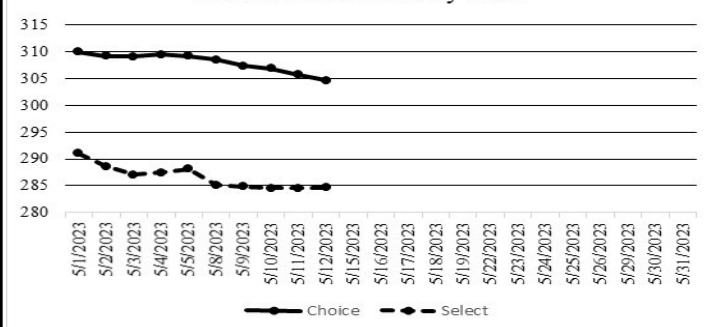


\*Graph is updated the first Monday of each month. Axis value ranges may be updated to reflect data points.

### NATIONAL BOXED BEEF CUTOUT/BOXED BEEF CUTS

<u>DATE</u>	<u>CHOICE</u>	<u>SELECT</u>	<u>TOTAL LOADS</u>
05/08	308.56	285.12	78
05/09	307.38	284.89	121
05/10	306.87	284.54	138
05/11	305.72	284.58	128
05/12	304.61	284.68	115
<b>5 Day Simple Average</b>	<b>306.63</b>	<b>284.76</b>	

### Boxed Beef Cuts May 2023



\*Axis value ranges may be updated to reflect data points.

### WEEKLY LIVESTOCK SLAUGHTER 05/13/23

	<u>CATTLE</u>	<u>HOGS</u>	<u>SHEEP</u>
Week to Date:	646,000	2,375,000	35,000
Last Week:	623,000	2,447,000	35,000
Last Year:	651,000	2,363,000	32,000

**SOUTHWEST MISSOURI WEEKLY SUMMARY**

(Joplin and Springfield)

Receipts: 13,474 Week ago: 12,792 Year ago: 6,389

Compared to last week, feeder calves steady to 5.00 lower, steers over 600 lbs 4.00 to 8.00 lower and heifers over 600 lbs 2.00 to 4.00 higher on comparable sales. Slaughter cows steady and slaughter bulls steady to 4.00 higher.

**FEEDER STEERS:**  
Medium and Large 1

300-400 lbs.	260.00-300.00
400-500 lbs.	251.00-282.00
500-600 lbs.	230.00-272.00
600-700 lbs.	217.00-240.00
700-800 lbs.	203.00-212.50
800-850 lbs.	193.50-200.50
62 hd 914 lbs.	

**FEEDER HEIFERS:**  
Medium and Large 1

300-400 lbs.	222.00-253.00
400-500 lbs.	211.00-239.00
500-600 lbs.	197.00-220.00
600-700 lbs.	192.50-214.00
700-750 lbs.	175.50-201.50
800-900 lbs.	165.50-179.00

**FEEDER HOLSTEIN STEERS**  
Large 3

300-400 lbs.	130.00-150.00
400-500 lbs.	155.00-173.50
500-600 lbs.	137.00-152.00
Pkg 690 lbs.	120.00
700-800 lbs.	135.00-155.00
800-850 lbs.	136.00-146.00
53 hd 954 lbs.	147.00
Pkg 1023 lbs.	129.00

**SLAUGHTER COWS:** Breaking and Boning (70-85% lean) 83.00-95.50, high dressing 94.00-105.00; low dressing 67.00-86.00. Lean (85-90%) 72.00-87.00

**SLAUGHTER BULLS:** Yield Grade 1-2 2130-2390 lbs. 104.00-121.00; high dressing 118.50-133.50; low dressing 91.00-103.00

**BRED COWS:** Medium and Large 1 2-8 yrs 1095-1390 lbs 2nd to 3rd stage 1400.00-1510.00. Medium and Large 1-2 2-8 yrs 880-1265 lbs 2nd to 3rd stage 975.00-1425.00, 1st stage 1025.00 per head

**BRED HEIFERS:** Medium and Large 1-2 2-4 yrs 730-1210 lbs 1st to 3rd stage 800.00-1250.00 per head

**COW & CALF PAIRS:** Medium and Large 1 2-8 yrs 1060-1320 lbs with <150 to 300 lb calves 1725.00-1875.00 per pair. Medium and Large 1-2 2-8 yrs 970-1565 lbs with 150-300 lb calves 1400.00-1975.00; 2-8 yrs 1085 lbs rebred 1st stage with 150-300 lb calves 1750.00 per pair

**SOUTH CENTRAL MISSOURI WEEKLY SUMMARY**

(West Plains, Phillipsburg)

Receipts: 5,637 Week ago: 5,050 Year Ago: 5,154

Compared to last week, steers and heifers steady to 5.00 higher, except heifers late week 2.00 to 6.00 lower. Slaughter cows steady. Slaughter cows steady to 3.00 higher.

**FEEDER STEERS:**  
Medium and Large 1

300-400 lbs.	260.00-285.00
400-500 lbs.	249.00-287.00
500-600 lbs.	243.00-278.00
600-700 lbs.	221.00-238.00
700-750 lbs.	212.00-224.00
29 hd 854 lbs.	190.00
12 hd 922 lbs.	185.00

**FEEDER HEIFERS:**  
Medium and Large 1

300-400 lbs.	232.00-250.00
400-500 lbs.	218.00-242.00
500-600 lbs.	200.00-217.00
600-650 lbs.	195.00-196.00
700-800 lbs.	180.00-189.00

**FEEDER HOLSTEIN STEERS**  
Large 3

10 hd 671 lbs.	110.00
----------------	--------

**SLAUGHTER COWS:** Breaking and Boning (70-85% lean) 85.00-97.50, high dressing 95.00-103.00; low dressing 67.50-87.00. Lean (85-90%) 70.50-86.00

**SLAUGHTER BULLS:** Yield Grade 1-2 1130-2390lbs. 103.00-122.00; high dressing 119.00-134.00; low dressing 81.00-101.00

**BRED COWS:** Medium and Large 1-2 997-1390 lbs 2nd to 3rd stage 1150.00-1475.00; >8 yrs 998-1152 lbs 2nd to 3rd stage 1000.00-1175.00 per head

**BRED HEIFERS:** Medium and Large 1-2 <2 yrs 910-1075 lbs 1st to 3rd stage 1150.00 per head

**COW & CALF PAIRS:** Medium and Large 1-2 8 pairs 2-8 yrs 1079 lbs with 150-300 lb calves 2100.00 per pair; 6 pairs >8 yrs 1050 lbs with 150-300 lb calves 1650.00 per pair

**WEST CENTRAL MISSOURI WEEKLY SUMMARY**

(Kingsville, Windsor, Butler)

Receipts: 8,219 Week ago: 8,496 Year ago: 5,863

Compared to last week, steers and heifers unevenly steady from 5.00 lower to 5.00 higher. Slaughter cows steady to 3.00 lower.

**FEEDER STEERS:**  
Medium and Large 1

400-500 lbs.	245.00-289.00
500-600 lbs.	224.50-273.00
600-700 lbs.	213.00-245.00
700-800 lbs.	194.00-213.75
800-900 lbs.	194.00-208.85
Pkg 905 lbs.	180.50

**FEEDER HEIFERS:**  
Medium and Large 1

300-400 lbs.	237.50-284.00
400-500 lbs.	214.00-246.50
500-600 lbs.	203.00-239.00
600-700 lbs.	181.00-221.00
700-800 lbs.	181.75-210.35
Pkg 946 lbs.	161.50

**SLAUGHTER BULLS:** Yield Grade 1-2 1105-1990 lbs 107.00-125.00; high dressing 126.00-129.00; low dressing 70.00-107.00

**SLAUGHTER COWS:** Breaking and Boning (70-85% lean) 82.00-101.00, high dressing 92.50-111.00; low dressing 73.50-89.00. Lean (85-90%) 70.00-89.00

**BRED COWS:** Scarce

**COW & CALF PAIRS:** Scarce

**NORTHEAST MISSOURI WEEKLY SUMMARY**

(Bowling Green, Kingdom City, Palmyra)

Receipts: 6,096 Week ago: 7,616 Year ago: 4,398

Compared to last week, steers under 650 lbs steady to 5.00 lower, over 650 lbs steady to firm. Heifers under 600 lbs steady to 5.00 lower, over 600 lbs steady to firm. Slaughter cows steady to firm.

**FEEDER STEERS:**  
Medium and Large 1

350-400 lbs.	291.00-297.00
400-500 lbs.	263.00-292.00
500-600 lbs.	240.00-270.00
600-700 lbs.	220.00-246.50
700-800 lbs.	201.00-224.00
800-900 lbs.	195.25-205.75

**FEEDER HEIFERS:**  
Medium and Large 1

400-500 lbs.	231.00-246.00
500-600 lbs.	217.00-239.50
600-700 lbs.	205.00-226.00
15 hd 780 lbs.	189.50

**SLAUGHTER BULLS:** Yield Grade 1-2 1315-2550 lbs 111.00-132.00; high dressing 123.00-138.00; few low dressing 110.00-113.00.

**SLAUGHTER COWS:** Breaking and Boning, (70-85% lean) 88.00-98.50; high dressing 97.00-109.00; low dressing 77.00-89.00. Lean (85-90%) 80.00-91.00

**SLAUGHTER STEERS:** Choice 2 -3 173.50-179.50. Select and Choice 1-3 173.00-175.00. Select and Choice 2-3 166.00-172.00.

**SLAUGHTER HEIFERS:** Choice 2-3 173.50-179.50. Select and Choice 2-3 166.00-170.00.

**BRED COWS:** Medium and Large 1-2 2-8 yrs 1090-1473 lbs 2nd stage 1675.00-1975.00 per head

**COW/CALF PAIRS:** Large 1-2 2-8 yrs 1200-1650 lbs with 150-300 lb calves 2550.00-3050.00 per pair

**NORTH CENTRAL MISSOURI WEEKLY SUMMARY**

(Macon, Unionville, Green City, New Cambria)

Receipts: 2,057 Week ago: 3,941 Year ago: 1,814

Compared to two weeks ago, feeder calves steady to firm, spots 5.00 higher, steers over 650 lbs lightly tested and heifers over 650 lbs steady. Slaughter cows steady.

\*Some sale barns on a bi-weekly schedule and may not have a sale each week.

**FEEDER STEERS:**  
Medium and Large 1

400-500 lbs.	264.50-276.00
500-600 lbs.	245.00-279.00
600-700 lbs.	222.00-244.00
18 hd 708 lbs.	216.50
65 hd 835 lbs.	196.75

**FEEDER HEIFERS:**  
Medium and Large 1

400-500 lbs.	231.00-250.50
500-600 lbs.	216.00-230.50
600-700 lbs.	205.50-213.25
68 hd 773 lbs.	203.85
24 hd 883 lbs.	173.10

**SLAUGHTER BULLS:** Yield Grade 1-2 1435-1885 lbs 117.00-118.50, high dressing couple 126.00-133.00

**SLAUGHTER COWS:** Breaking and Boning, (70-85% lean) 89.00-98.00; high dressing 98.00-102.50. Lean (85-90%) 81.00-89.00

**BRED COWS:** Scarce

**COW & CALF PAIRS:** Scarce

**SOUTHEAST MISSOURI WEEKLY SUMMARY**

(Jackson and Farmington)

Receipts: 1,248 Week ago: 1,730 Year ago: 1,219

Compared to last week, steers and heifers uneven from 3.00 lower to 6.00 higher. Slaughter cows steady to 1.00 higher. Slaughter bulls 2.00 higher.

**FEEDER STEERS:**  
Medium and Large 1

300-400 lbs. 250.00-285.00  
400-500 lbs. 240.00-280.00  
500-600 lbs. 230.00-262.00  
600-700 lbs. 185.00-234.00  
Pkg 720 lbs. 183.00  
850-900 lbs. 161.00-188.00

**FEEDER HEIFERS:**  
Medium and Large 1

300-400 lbs. 210.00-250.00  
400-500 lbs. 195.00-240.00  
500-600 lbs. 180.00-216.00  
600-700 lbs. 180.00-199.00  
Pkg 700 lbs. 172.00

**SLAUGHTER BULLS:** Yield  
Grade 1-2 950-1535 lbs. 92.00-108.00; high dressing 110.00-126.00

**SLAUGHTER COWS:** Breaking and Boning (75-85% lean) 80.00-89.00; high dressing 89.00-98.00. Lean (85-90% lean) 65.00-78.00

**BRED COWS:** Medium and Large 2 2-8 yrs 1010-1325 lbs 1st to 2nd stage 875.00-1100.00, 3rd stage 1200.00-1450.00; >8 yrs 1090-1310 lbs 3rd stage 685.00-1285.00 per head

**COW & CALF PAIRS:** Scarce

**EAST CENTRAL MISSOURI WEEKLY SUMMARY**

(Cuba, Vienna)

Receipts: 3,960 Week ago: 3,945 Year ago: 3,575

Compared to last week, steers steady to 2.00 lower, except several under 500 lb 5.00 to 10.00 higher. Heifers uneven from 3.00 lower to 6.00 higher. Slaughter cows steady to 1.00 higher.

**FEEDER STEERS:**  
Medium and Large 1

300-400 lbs. 271.00-285.00  
400-500 lbs. 252.00-281.50  
500-600 lbs. 238.50-279.00  
600-700 lbs. 219.00-237.00  
Pkg 710 lbs. 223.50

**FEEDER HEIFERS:**  
Medium and Large 1

300-400 lbs. 230.00-256.00  
400-500 lbs. 230.50-252.00  
500-600 lbs. 215.00-245.00  
600-700 lbs. 197.50-217.50  
700-750 lbs. 190.00-201.00

**SLAUGHTER BULLS:** Yield  
Grade 1-2 1375-1915 lbs 105.00-123.00; couple high dressing 127.00-135.00.

**SLAUGHTER COWS:** Breaking and Boning, (70-85% lean) 88.00-99.50; high dressing 96.50-100.00; low dressing 84.00-90.00. Lean (85-90%) 79.00-88.50

**BRED COWS:** Medium and Large 1-2 2-8 yrs 1030-1375 lbs 2nd to 3rd stage 1100.00-1420.00 per head

**COW & CALF PAIRS:** Scarce

**NORTHWEST MISSOURI WEEKLY SUMMARY**

(Tina)

Receipts: 1,510 Week ago: 1,798

Compared to last week, feeder calves steady to 5.00 lower and yearlings not tested. Slaughter cows steady to 2.00 higher.

**FEEDER STEERS:**  
Medium and Large 1

350-400 lbs. 308.00-322.50  
400-500 lbs. 289.00-296.50  
500-600 lbs. 247.00-290.00  
600-650 lbs. 235.00-246.00

**FEEDER HEIFERS:**  
Medium and Large 1

Pkg 372 lbs. 251.00  
400-500 lbs. 243.00-245.00  
500-600 lbs. 221.50-231.00

**SLAUGHTER BULLS:** Yield  
Grade 1-2 1020-2200 lbs 110.00-119.00; couple high dressing 121.00-129.00; few low dressing 75.00-94.50.

**SLAUGHTER COWS:** Breaking and Boning, (70-85% lean) 86.00-99.50; high dressing 97.00-104.50; low dressing 81.00-85.00. Lean (85-90%) 73.00-88.00

**BRED COWS:** Medium and Large 1-2 2-8 yrs 1053-1056 lbs 2nd to 3rd stage 1125.00-1350.00 per head

**COW & CALF PAIRS:** Medium and Large 1-2 2-8 yrs 1025-1250 lbs some rebred 1st to 3rd stage with 150 to >300 lb calves 1800.00-2250.00 per pair

**AFTERNOON NATIONAL SLAUGHTER CATTLE REVIEW**

Thus far Friday negotiated cash trade was limited on light to moderate demand in all feeding regions, however not enough for an adequate market test in any region. The latest established market in the Texas Panhandle was on Wednesday with live purchases at 170.00. In Kansas the latest established market was on Thursday with live purchases at 170.00. In Nebraska on Thursday live purchases traded from 175.00-177.00, mostly at 176.00 with dressed purchases at 280.00. On Thursday in the Western Cornbelt, live purchases traded mostly from 175.00-177.00 with a light test of dressed purchases at 280.00.

**Negotiated Cash Sales:**

<b>Confirmed:</b>	2,398	<b>Week Ago:</b>	2,749	<b>Year Ago:</b>	1,120
<b>Week to date:</b>	76,698	<b>Week Ago:</b>	84,373	<b>Year Ago:</b>	85,373

<u>Live Basis</u>	<u>Steers</u>	<u>Heifers</u>
<b>Over 80% Choice</b>	170.00-177.00, avg 175.98	-
<b>65-80% Choice</b>	170.00	-
<b>35-65% Choice</b>	-	-
<b>0-35% Choice</b>	-	-
<b>Total All Grades</b>	170.00-177.00, avg 175.09	-
<b>Dressed Basis</b>		
<b>Over 80% Choice</b>	277.00	-
<b>65-80% Choice</b>	-	-
<b>35-65% Choice</b>	-	-
<b>0-35% Choice</b>	-	-
<b>Total All Grades</b>	277.00	-

<u>All Beef Type Steers/Heifers</u>	<u>Head</u>	<u>Avg Wt</u>	<u>Price Range</u>	<u>Wtd Avg</u>
Live FOB	1,594	1,437.9	164.00-179.00	174.42
Live Del	32	1,450	178.50	178.50
Dressed Del	558	881	227.00-282.00	280.33
Dressed FOB	190	929	281.00	281.00

**WEEKLY COMMODITY FUTURES TRENDS**

Compared to last week, Live Cattle 2.12 to 2.95 higher, Lean Hogs uneven May and June 0.33 to 1.10 higher and others 0.10 to 0.98 lower, Feeder Cattle May 2.95 higher and others 6.30 to 7.55 higher.

Daily Futures Closes

	Mon.	Tues.	Wed.	Thu.	Fri.
<b>Cattle</b>					
Jun	162.45	163.92	163.00	162.95	164.40
Aug	160.07	161.55	161.17	160.80	162.45
Oct	164.12	165.32	165.00	164.55	166.15
Dec	168.87	170.00	169.50	168.67	170.27
Feb	173.10	174.27	173.85	173.57	174.67
<b>Lean Hogs</b>					
May	75.62	76.27	76.57	76.60	76.62
Jun	83.30	84.40	84.17	83.87	84.10
Jul	85.27	86.50	85.97	85.12	85.32
Aug	86.20	87.27	87.15	86.37	86.07
Oct	77.92	78.87	78.57	77.55	77.42
<b>Fdr Cat</b>					
May	203.42	205.92	205.37	204.12	205.47
Aug	223.10	226.12	225.15	226.07	228.97
Sep	226.65	229.65	228.37	229.30	231.97
Oct	229.00	232.00	230.77	231.70	234.15
Nov	230.00	232.92	231.90	232.72	234.85
<b>Milk</b>					
May	16.46	16.40	16.46	16.28	16.25
Jun	17.04	16.88	17.19	16.91	16.57
Jul	17.70	17.65	17.87	17.63	17.46

**WEEKLY COMMODITY GRAIN FUTURES TRENDS**

Compared to last week, Soybeans 0.34 to 0.57 lower, Wheat 0.21 to 0.25 lower, Corn 0.10 to 0.27 lower, KC Wheat 0.12 to 0.44 higher, Soybean Meal uneven from 2.10 lower to 6.80 higher.

Daily Grain Futures Closes

	Mon.	Tues.	Wed.	Thu.	Fri.
<b>Soybeans</b>					
May	1468 3/4	1451 3/4	1436 1/2	1443 1/4	1435
Jul	1433 3/4	1414 1/4	1404	1405 1/2	1390
Aug	1365 1/2	1347 1/2	1336 3/4	1337 1/4	1318 1/4
Sep	1291 1/2	1275 1/2	1267 3/4	1268	1244 1/4
Nov	1272 1/2	1254 1/2	1250 3/4	1248	1223 3/4
<b>Wheat</b>					
May	641	630 1/2	628 1/4	614 1/4	624 1/2
Jul	654	643 1/2	641 1/4	627 1/4	635
Sep	666	655 1/4	652 1/2	639	647 1/2
Dec	683	672 1/2	669	656 1/4	664 1/4
Mar	693 1/2	684	680 3/4	668 1/2	676 1/2
<b>Corn</b>					
May	656 1/2	642 1/4	645 1/2	632 1/2	633 1/4
Jul	596 1/2	584 3/4	594	582 1/4	586 1/4
Sep	532 3/4	519	522 3/4	515	510 3/4
Dec	529 3/4	518 1/4	520 3/4	513 3/4	508 3/4
Mar	539	528 1/4	530 1/2	523 3/4	519 1/4
<b>KC Wheat</b>					
May	891	906 1/2	905 1/2	891 3/4	891 3/4
Jul	844 1/4	856 1/4	855 1/4	841 1/2	877
Sep	834 1/4	841 3/4	841 1/4	828	861
Dec	830 1/4	833 1/4	833 1/4	818 1/2	846 3/4
Mar	826	827 3/4	826 1/4	811	834 1/2
<b>SB Meal</b>					
May	425.50	416.40	417.90	426.60	428.10
Jul	426.90	419.00	419.50	431.40	432.90
Aug	419.90	413.30	413.80	423.00	423.40
Sep	408.70	402.90	403.70	409.90	409.20
Oct	399.80	394.00	394.80	398.60	396.00

**MISSOURI GRAIN WEEKLY TRENDS**

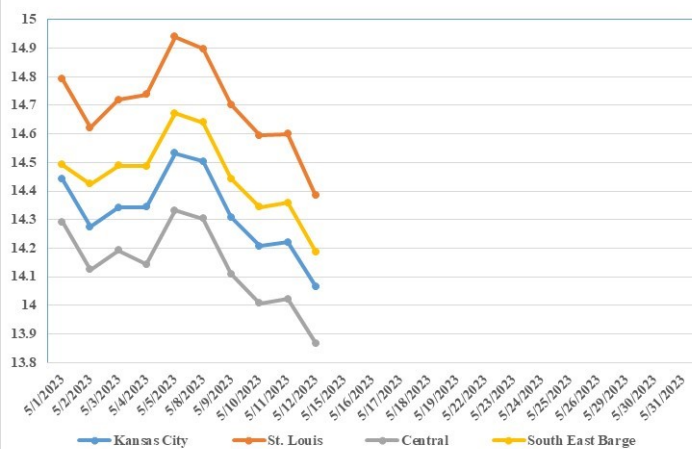
Compared to last week, Soybeans 0.46 to 0.57 lower, Wheat 0.15 to 0.25 lower, Corn 0.07 to 0.30 lower, Sorghum 0.09 to 0.11 lower.

Area	#1 Soybeans	#2 Soft Wheat	#2 Corn	#2 Grain Sorghum
<b>Kansas City</b>				
Friday**	14.37-14.62	6.65	6.42-6.64	6.47
Monday	14.34-14.59	6.59	6.42-6.64	6.47
Tuesday	14.14-14.39	6.49	6.30-6.52	6.35
Wednesday	14.04-14.29	6.46	6.39-6.61	6.44
Thursday	14.06-14.31	6.32	6.27-6.49	6.32
Friday	13.90-14.15	6.50	6.31-6.56	6.36
<b>St. Louis</b>				
Friday**	14.94-14.95	6.40-6.70	6.78-6.80	6.93
Monday	14.89-14.91	6.34-6.64	6.78-6.82	6.93
Tuesday	14.70	6.24-6.54	6.67-6.68	6.81-6.83
Wednesday	14.59-14.60	6.21-6.51	6.66-6.67	6.90-6.92
Thursday	14.61-14.62	6.07-6.37	6.49-6.54	6.78-6.80
Friday	14.38-14.39	6.15-6.45	6.48-6.24	6.82-6.84
<b>Central</b>				
Friday**	14.32-14.37	6.35	6.42-6.47	---
Monday	14.29-14.34	6.29	6.42-6.47	---
Tuesday	14.09-14.14	6.19-6.44	6.30-6.35	---
Wednesday	13.99-14.04	6.16-6.41	6.39-6.44	---
Thursday	14.01-14.06	6.02-6.27	6.27-6.32	---
Friday	13.85-13.90	6.35	6.31-6.36	---
<b>S.E. MO</b>				
Friday**	14.62-14.77	---	6.47-6.51	---
Monday	14.59-14.74	---	6.37-6.49	---
Tuesday	14.39-14.54	---	6.25-6.39	---
Wednesday	14.29-14.44	---	6.34-6.50	---
Thursday	14.31-14.46	---	6.32-6.38	---
Friday	14.15-14.25	---	6.36	---

(PRICES PER BUSHEL) \*NEW CROP \*\*PREVIOUS WEEK'S PRICES  
\*Bids calculated using Kansas City, St. Louis, and St. Joseph bids

**MONTHLY GRAIN CROP**

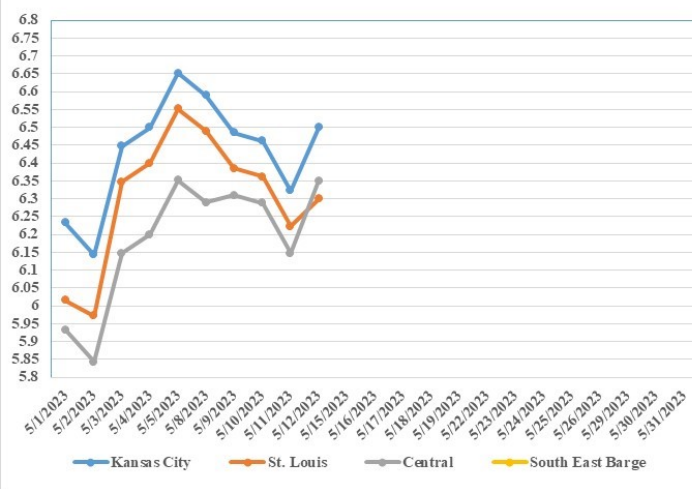
May 2023 Soybean Bids



May 2023 Corn Bids



May 2023 Wheat Bids



\*Axis value ranges may be updated to reflect data points.

**WHOLESALE FEEDSTUFFS PRICES  
(DOLLARS PER TON-BULK BASIS)**

Area	Soybean Hulls Pellets	Soybean Meal 46.5-48%	Corn Gluten Pellets 21%	Wheat Middlings
Kansas City	188.33	428.90	275.50	160.00
St. Louis	n/a	n/a	252.50	153.33

**WORLD AGRICULTURAL SUPPLY/DEMAND ESTIMATES**

**WHEAT:** The 2023/24 outlook for U.S. wheat is for reduced supplies and exports, increased domestic use, and smaller stocks compared with 2022/23. U.S. wheat supplies are forecast lower than last year with smaller beginning stocks and only slightly larger production. All wheat production is projected at 1,659 million bushels, up modestly from last year on increased harvested area. However, the harvest-to-plant ratio is down from last year with above-average abandonment in Texas, Oklahoma, and Kansas. The all wheat yield, projected at 44.7 bushels per acre, is 1.8 bushels lower than last year. The first survey-based production forecast for 2023/24 winter wheat is up 2 percent from last year as higher Soft Red Winter production more than offsets a decline in Hard Red Winter and White wheat.

**COARSE GRAINS:** The 2023/24 U.S. corn outlook is for larger production, greater domestic use and exports, and higher ending stocks. The corn crop is projected at a record 15.3 billion bushels, up more than 10 percent from last year on increases to both area and yield. The yield projection of 181.5 bushels per acre is based on a weather-adjusted trend assuming normal planting progress and WASDE-636-2 summer growing season weather, estimated using the 1988-2022 time period. With beginning stocks up slightly, total corn supplies are forecast at 16.7 billion bushels, the highest since 2017/18. Total U.S. corn use for 2023/24 is forecast to rise about 5 percent relative to a year ago on higher domestic use and exports. Food, seed, and industrial use is projected to rise 55 million bushels to 6.7 billion. Corn used for ethanol is projected to increase 1 percent, based on expectations of modest growth in motor gasoline consumption and ethanol's inclusion rate into gasoline. Feed and residual use is projected higher on a larger crop and lower expected prices.

**OILSEEDS:** The 2023/24 outlook for U.S. soybeans is for higher supplies, crush, and ending stocks, and lower exports compared with 2022/23. The soybean crop is projected at 4.51 billion bushels, up 5 percent from last year's crop mainly on higher yields. With lower beginning stocks partly offsetting increased production, soybean supplies are forecast at 4.75 billion bushels, up 4 percent from 2022/23. Total U.S. oilseed production for 2023/24 is projected at 132.8 million tons, up 6.9 million from 2022/23 mainly on higher soybean production. Production forecasts are also higher for canola, peanuts, and cottonseed.

**MISSOURI WEEKLY SHEEP/GOAT AUCTION SUMMARY**

Receipts: 3,227 Week Ago: 1,045 Last Year: 640

**SHEEP:** Feeder lambs Small and Medium 1 hair 25-40 lbs 180.00-200.00; 40-60 lbs 170.00-180.00. Small and Medium 1-2 hair 20-50 lbs 160.00-275.00. Small and Medium 2 hair 25-50 lbs 146.00-205.00. Slaughter lambs Choice and Prime 1-3 w/s 60-85 lbs 163.00-170.00; pkg 94 lbs 140.00. Choice 1-2 w/s lot 81 lbs 152.50. Choice and Prime 1-3 hair 50-60 lbs 175.00-230.00; 60-75 lbs 162.00-270.00. Choice 1-2 hair 50-80 lbs 155.00-170.00. Choice 1-2 hair 50-90 lbs 150.00-185.00. Good and Choice 1-2 hair 50-70 lbs 141.00-151.00. Good 2-3 70-105 lbs 110.00-140.00. Slaughter ewes Utility and Good 1-2 90-180 lbs 62.50-67.50. Utility and Good 1-3 lot 75 lbs 85.00. Utility 1-2 95-200 lbs 51.00-57.50. Cull and Utility 1-2 140-175 lbs 41.00-42.50. Cull 1 85-160 lbs 26.00-27.50. Good 2-3 hair 100-120 lbs 120.00-130.00. Utility and Good 1-3 90-165 lbs 70.00-85.00. Cull and Utility 2-3 70-75 lbs 50.00. Bucks 1-2 hair 105-145 lbs 70.00-105.00. Replacement ewes Small and Medium 1-2 hair 2-4 yrs 60-145 lbs exp 110.00-205.00. Small and Medium 2 hair 2-4 yrs 50-130 lbs exp 70.00-105.00. Families Small and Medium 2

**GOATS:** Feeder kids Selection 1 30-50 lbs 300.00-370.00. Selection 2 19-46 lbs 200.00-285.00. Slaughter kids Selection 1 50-65 lbs 300.00-352.50; fancy 365.00-377.50. Selection 1-2 60-65 lbs 280.00-302.50. Selection 2 50-75 lbs 200.00-275.00; 80-102 lbs 70.00-160.00. Nannies Selection 1-2 110-145 lbs 145.00-150.00. Selection 2 90-130 lbs 100.00-135.00. Slaughter bucks 115-150 lbs 175.00-215.00. Replacement Nannies Selection 1 2-4 yrs exp 60-75 lbs 330.00-335.00. Selection 1-2 2-4 yrs exp 45-100 lbs 160.00-190.00 per head Selection 2 2-4 yrs 65-100 lbs exp 125.00-140.00 per head Selection 3 2-4 yrs 55-75 lbs exp 50.00-100.00 per head.

Explanatory Notes: Stage - Represents estimated lambing/kidding period (Open, Exp=exposed, Bred, Fall = Sep-Nov, Win = Dec-Feb, Spr = Mar-May, Sum=Jun-Aug; w/s = woolled and shorn; /hd= per head; /fam=per family All price CWT unless otherwise noted.

**MISSOURI DROUGHT MONITOR**

Date	None	D0	D1	D2	D3	D4
05/09/23	15.30	48.09	16.99	17.49	2.13	0
05/02/23	45.73	27.58	16.17	10.40	0.12	0
05/10/22	100.00	0	0	0	0	0

Reflects percentage of Missouri impacted by drought. D0 Abnormally Dry; D1 Moderate Drought; D2 Severe Drought; D3 Extreme Drought; D4 Exceptional Drought

**NATIONAL DIRECT DELIVERED FEEDER PIG REPORT**

05/12/23 Receipts: 86,131 Week ago: 97,185 Year Ago: 85,129 Early weaned pigs 4.00/ hd lower. All feeder pigs 12.00/ hd lower. Early weaned pigs 10-12 lbs. basis: Cash 41,370 head 4.00-21.00, weighted average 10.19. Formula 35,081 head 13.86-50.20, weighted average 33.10 Feeder pigs 40 pounds basis: Cash 9,680 head 36.00-52.00, weighted average 41.47

**NATIONAL DAILY DIRECT PRIOR DAY HOG REPORTS FOR 05/12/23**

**BARROWS AND GILTS (Carcass Basis):** 7,085 head Base Carcass Price 72.00-80.00, weighted average 75.71

**SOWS (Live Basis):** 7,307 head 300-500 lbs. 10.00-32.00 Over 500 lbs. 10.00-34.00

**MISSOURI WEEKLY DIRECT SLAUGHTER CATTLE REPORT 05/12/23**

Weekly Receipts: Week ago: 360 Year ago: Trade as of Friday morning: trade is light to moderate with flat dressed sales steady to 3.00 lower and grid dressed sales 2.00 lower.

**LIVE STEERS & HEIFERS:** No sales reported **DRESSED STEERS & HEIFERS:** 3 loads Tue flat 277.00; 2 loads Thu 280.00

**GRADE AND WEIGHT (Grid):** 6 loads Thu 286.00

**MISSOURI CROP PROGRESS AND CONDITION 05/08/23**

	Week Ending			2018-2022 Average
	05/07/23	04/30/23	05/07/22	
Corn Planted	92	80	31	56
Corn Emerged	56	31	9	25
Soybeans Planted	50	34	7	12
Soybeans Emerged	21	12	1	2
Cotton Planted	40	5	18	19
Rice Planted	85	73	27	52
Rice Emerged	61	31	4	28
Winter Wheat Headed	40	25	24	37

**MISSOURI WEEKLY HAY SUMMARY 05/11/23**

Although several in the state have finally received some rain over the last week, conditions are pretty concerning for this time of year. Eighty-five percent of the state is showing on the latest drought monitor. The dry weather has allowed for near record pace of spring planting. Corn is at 92 percent complete, 36 percent ahead of the five year average, beans are 50 percent complete, 38 percent ahead of the average. Many farmers actually parked planters waiting for some moisture before planting beans. Hay harvest is underway for quite a few now. Producers wrapping high moisture hay has been going on for a couple weeks now. Many are also cutting some grasses and making dry hay as they are concerned about maturity and worried what little that is there might burn up. Nearly everyone is stating pastures and hay is short. So far prices for new crop seem to be mostly steady as lack of supply and on-going weather concerns are over riding a very slight decrease in cost of production compared to last year. The supply of hay is light and demand is light to moderate.

- Alfalfa - Supreme 250.00-300.00, small square 10.00-15.00 per bale
- Alfalfa - Premium 180.00-250.00
- Alfalfa - Good 150.00-180.00, small square 5.00-9.00 per bale
- Alfalfa - Fair 125.00-150.00
- Alfalfa/grass mix - Good/Premium small square 5.00-9.00 per bale
- Mixed grass - Good/Premium 125.00-175.00
- Mixed grass - Fair/Good 100.00-150.00, small square 5.00-8.00 per bale
- Mixed grass - Fair 50.00-100.00 per large round bale
- Wheat straw - 4.00-7.00 per small square bale

Please Note: The above volumes (tonnage, acres, and bales) listed on this USDA LPGMN report are for confirmed trades only, it does not include estimated volume (tonnage) for bids or offers to the trade. The current hay directory can be found at: [Hay Directory](#). List your hay for sale at: [Hay Listing Online Form](#). Explanation of Hay Quality Guidelines: [Hay Quality Designation Guidelines](#). Glossary of Terms: [Livestock, Poultry, and Grain Hay Terms](#)

Click here for the current [National Crop Progress](#)  
Click here for the current [Missouri Crop Progress](#)