

Weekly Market Summary

Published by:
Missouri Department of Agriculture
Ag Business Development Division
Market News Program



Chris Chinn, Director
 Jill Wood, Division Director
 Tony Hancock, Editor
<http://www.ams.usda.gov/marketnews.htm>
<http://www.ams.usda.gov/marketnews.htm>

Michael L. Parson, Governor

Volume XLIII, Number 21 ♦ P.O. Box 630, Jefferson City, MO 65102 ♦ (573) 751-4211 ♦ Monday, May 29, 2023

MISSOURI WEEKLY FEEDER CATTLE WEIGHTED AVERAGE REPORT

Receipts: 34,568 Week ago: 35,266 Year ago: 33,946
 Steers and Heifers Medium and Large 1—Weighted average weights and prices

STEERS: Medium and Large 1

291 lbs. 276.15	476 lbs. 277.11	674 lbs. 233.87	887 lbs. 202.36
331 lbs. 287.17	526 lbs. 266.70	726 lbs. 223.18	922 lbs. 197.46
371 lbs. 285.94	574 lbs. 256.73	770 lbs. 213.84	959 lbs. 194.72
426 lbs. 277.55	625 lbs. 246.56	827 lbs. 199.71	

HEIFERS: Medium and Large 1

281 lbs. 234.75	475 lbs. 239.56	677 lbs. 212.52	874 lbs. 169.02
330 lbs. 249.00	523 lbs. 234.20	727 lbs. 207.05	918 lbs. 190.86
380 lbs. 249.42	572 lbs. 230.48	772 lbs. 194.31	1019 lbs. 145.00
426 lbs. 244.45	622 lbs. 219.95	828 lbs. 196.79	

MISSOURI STEER (HEIFER) STOCKER FORMULA 05/29/2023

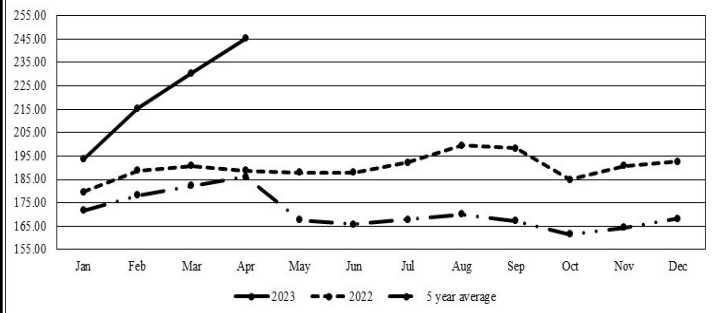
Monday's Missouri Stocker Formula consists of **8665 (8323)** head with a weighted average weight of **535.20 (524.38)** lbs. and a price value of **256.69 (227.29)**, 2.72 higher (1.09 higher) than last week. This a rolling seven day calculated weighted value which combines all Feeder Steers reported by MDA/USDA Market News Service weighing from 400-649 lbs. in the Medium and Large 1 and Medium and Large 1 -2 frame and muscle classifications, including all comment cattle except Brahman X. Heifer values are in parentheses.

MISSOURI WEEKLY CATTLE AUCTION SUMMARY

Compared to last week, feeders sold 5.00 to 10.00 higher and heifers sold steady to 5.00 higher. The supply was moderate to heavy as auction volumes continue to run above what is seasonally typical. Demand was good. Many barns will be closed this coming week in observance of the Memorial Day holiday. Many farmers made it to the hay fields this week. The sun is good for making hay but you would be hard pressed to find anyone that wouldn't prefer to be getting rain currently. The Market for cull cows took a big jump this week with several reporters noting 10.00 jumps from the previous week. Many cows bringing over 100.00 per cwt and some higher dressing cows into the mid to upper 120.00's. Some notable larger drafts this week included 137 head of 554 lb. steers at Ozarks Regional Stockyards which sold for 278.00. South Central Regional Stockyards sold a load of 600 lb. steers at 266.00. Joplin Regional Stockyards sold a load of 714 lb. steers at 237.00 another part load of 488 lbs. steers at 287.00. Some smaller lots of three and four weights did break back into the low 300.00's again. Boxed beef cutouts continued to the downward trend this week. Choice closed at 303.93, up 2.83 and select closed at 284.94, up 0.98 compared to last Friday. Negotiated feedlot sales as of Friday afternoon totaled 95K head, sales were stronger this week both in volume and price levels. Live sales were reported from 171.00-185.00 and dressed sales 285.00-286.00. The Missouri Stocker Formula consist of 8665 head with a weighted average weight of 535.20 lbs. and a price value of 256.69, 2.72 higher than last week. The steer/heifer spread is 29.40.

The Weekly Market Summary, as well as historical summaries, are available on our website <https://agmarketnews.mo.gov/summaries>
 Market News Hotline: 1-573-522-9244

Missouri Stocker Formula - Steers

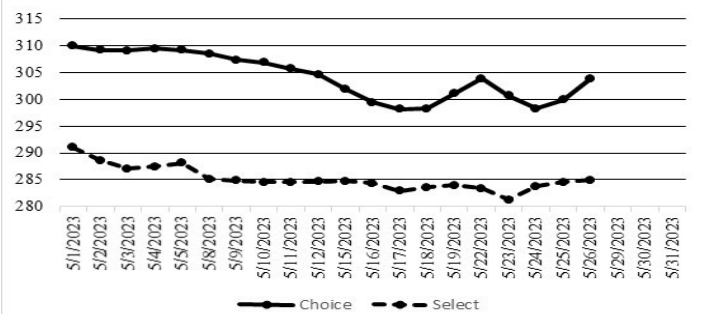


*Graph is updated the first Monday of each month. Axis value ranges may be updated to reflect data points.

NATIONAL BOXED BEEF CUTOUT/BOXED BEEF CUTS

DATE	CHOICE	SELECT	TOTAL LOADS
05/22	303.90	283.43	95
05/23	300.74	281.28	126
05/24	298.30	283.79	133
05/25	299.94	284.54	104
05/26	303.93	284.92	89
5 Day Simple Average	301.36	283.59	

Boxed Beef Cuts May 2023



*Axis value ranges may be updated to reflect data points.

WEEKLY LIVESTOCK SLAUGHTER 05/27/23

	CATTLE	HOGS	SHEEP
Week to Date:	625,000	2,371,000	33,000
Last Week:	642,000	2,397,000	35,000
Last Year:	641,000	2,346,000	34,000

SOUTHWEST MISSOURI WEEKLY SUMMARY

(Joplin and Springfield)

Receipts: 13,610 Week ago: 9,642 Year ago: 8,454

Compared to last week, steers and heifers 2.00 to 5.00 higher, spots up to 10.00 higher. Slaughter cows 3.00 to 6.00 higher, spots 10.00 higher. Slaughter bulls 3.00 to 7.00 higher.

FEEDER STEERS:
Medium and Large 1

300-400 lbs.	275.00-295.00
400-500 lbs.	256.00-285.00
500-600 lbs.	240.00-272.00
600-700 lbs.	218.00-256.00
700-800 lbs.	201.00-237.00
800-900 lbs.	197.00-210.00
900-1000 lbs.	191.00-198.00

FEEDER HEIFERS:
Medium and Large 1

300-400 lbs.	236.00-267.50
400-500 lbs.	229.00-253.00
500-600 lbs.	220.00-246.00
600-700 lbs.	198.00-224.00
700-800 lbs.	186.00-209.00
800-850 lbs.	185.00-194.50

FEEDER HOLSTEIN STEERS
Large 3

400-500 lbs.	148.00-170.00
500-600 lbs.	157.00-163.00
Pkg 793 lbs.	143.50
Pkg 860 lbs.	139.50
Pkg 943 lbs.	136.50
Pkg 969 lbs.	144.00
Pkg 1060 lbs.	137.00

BRED COWS: Medium and Large 1-2 2-8 yrs 895-1450 lbs 1st to 3rd stage 1200.00-1585.00, fancy 1660.00-1800.00; >8 yrs 1178 lbs 2nd to 3rd stage 1375.00 per head

BRED HEIFERS: Medium and Large 1-2 2-4 yrs 960-1165 lbs 2nd to 3rd stage 1075.00-1300.00 per head

SLAUGHTER COWS: Breaking and Boning (70-85% lean) 89.00-107.00, high dressing 103.00-122.50; low dressing 80.00-96.00. Lean (85-90%) 76.00-98.00

SLAUGHTER BULLS: Yield Grade 1-2 1205-2530 lbs. 110.00-128.00; high dressing 127.50-143.50; low dressing 85.00-111.00

COW & CALF PAIRS: Medium and Large 1 6 pairs >8 yrs 1302 lbs rebred 1st stage with 150-300 lb calves 2085.00. Medium and Large 1-2 2-8 yrs 1015-1450 lbs some rebred with baby to 300 lb calves 1550.00-1950.00 per pair

SOUTH CENTRAL MISSOURI WEEKLY SUMMARY

(West Plains, Phillipsburg)

Receipts: 6,622 Week ago: 5,878 Year Ago: 7,029

Compared to last week, feeder calves 4.00 to 8.00 higher, spots 15.00 higher. Yearlings steady to 4.00 higher. Slaughter cows and bulls steady to 6.00 higher.

FEEDER STEERS:
Medium and Large 1

300-400 lbs.	261.00-290.00
400-500 lbs.	249.00-289.00
500-600 lbs.	245.00-279.00
600-700 lbs.	223.00-257.00
700-750 lbs.	211.00-232.00
800-900 lbs.	200.00-206.00

FEEDER HEIFERS:
Medium and Large 1

300-400 lbs.	239.00-260.00
400-500 lbs.	225.00-247.50
500-600 lbs.	218.00-243.00
600-700 lbs.	207.75-234.00
750-800 lbs.	174.00-188.00

FEEDER HOLSTEIN STEERS
Large 3

Scarce Scarce

SLAUGHTER COWS: Breaking and Boning (70-85% lean) 85.00-103.00, high dressing 100.00-117.00; low dressing 79.00-93.00. Lean (85-90%) 75.00-93.00

SLAUGHTER BULLS: Yield Grade 1-2 1225-2065 lbs. 110.00-124.00; high dressing 124.00-130.00; low dressing 80.00-109.00

BRED COWS: Medium and Large 1 2-8 yrs 1133-1370 lbs 2nd to 3rd stage 1300.00-1575.00. Medium and Large 1-2 2-8 yrs 1038-1510 lbs 2nd to 3rd stage 1100.00-1550.00, 1st stage 1175.00-1250.00; few >8 yrs 1070 lbs 2nd to 3rd stage 1050.00 per head

BRED HEIFERS: Medium and Large 1-2 <2 yrs 985-1165 lbs 1st to 3rd stage 900.00-1100.00 per head

COW & CALF PAIRS: Medium and Large 1-2 2-8 yrs 1135-1237 lbs with 150-300 lb calves 1600.00-1800.00 per pair

WEST CENTRAL MISSOURI WEEKLY SUMMARY

(Kingsville, Windsor, Butler)

Receipts: 6,589 Week ago: 8,291 Year ago: 5,797

Compared to last week, steers and heifers steady to 6.00 higher, spots up to 10.00 higher on calves. Slaughter cows 2.00 to 6.00 higher.

FEEDER STEERS:
Medium and Large 1

300-400 lbs.	265.00-292.00
400-500 lbs.	247.50-290.00
500-600 lbs.	240.00-279.00
600-700 lbs.	222.50-254.50
700-800 lbs.	205.50-230.50

FEEDER HEIFERS:
Medium and Large 1

300-400 lbs.	234.00-276.00
400-500 lbs.	218.00-266.00
500-600 lbs.	212.50-251.00
600-700 lbs.	205.50-234.50
700-750 lbs.	195.00-219.00
900-1000 lbs.	169.50-173.00

SLAUGHTER BULLS: Yield Grade 1-2 1180-2485 lbs 113.50-128.00; high dressing 128.50-140.00; low dressing 96.00-114.00

SLAUGHTER COWS: Breaking and Boning (70-85% lean) 88.00-108.00, high dressing 100.00-115.50; low dressing 80.00-97.50. Lean (85-90%) 76.50-88.50

BRED COWS: Medium and Large 1-2 2-4 yrs 1100-1222 lbs 3rd stage 1225.00-1275.00; 5-8 yrs 1103-1340 lbs 2nd to 3rd stage 1200.00-1450.00 per head

COW & CALF PAIRS: Medium and Large 1-2 7 pairs 5-8 yrs 1225 lbs with 150-300 lb calves 1575.00-1610.00 per pair

NORTHEAST MISSOURI WEEKLY SUMMARY

(Bowling Green, Kingdom City, Palmyra)

Receipts: 4,983 Week ago: 6,176 Year ago: 5,555

Compared to last week, steers 400-500 lbs 10.00 to 15.00 higher, heavier weights firm to 5.00 higher. Heifers 400-500 lbs 5.00 to 10.00 higher, spots 15.00 higher, over 500 lbs steady to firm. Slaughter cows 5.00 to 10.00 higher, spots 12.00 higher.

FEEDER STEERS:
Medium and Large 1

300-400 lbs.	290.00-311.00
400-500 lbs.	269.50-302.00
500-600 lbs.	244.00-284.50
600-700 lbs.	225.00-256.00
700-800 lbs.	201.50-226.00
60 hd 893 lbs.	202.25
950-1000 lbs.	195.00-197.50

FEEDER HEIFERS:
Medium and Large 1

300-400 lbs.	241.00-273.00
400-500 lbs.	230.00-263.50
500-600 lbs.	223.00-243.00
600-700 lbs.	205.00-228.00
700-800 lbs.	195.50-214.00
800-900 lbs.	181.00-195.50
57 hd 916 lbs.	194.75

SLAUGHTER BULLS: Yield Grade 1-2 1405-2300 lbs 123.00-127.00; high dressing 128.00-143.00; few low dressing 106.00-116.00

SLAUGHTER COWS: Breaking and Boning (70-85% lean) 93.50-106.00; high dressing 104.50-129.00; low dressing 83.00-92.50. Lean (85-90%) 84.00-98.50

SLAUGHTER STEERS: Choice 2 -3 176.00-181.00. Select and Choice 1-3 172.00.

SLAUGHTER HEIFERS: Choice and Prime 2-4 179.00-185.00. Choice 2-3 178.00-177.50.

BRED COWS: Scarce

COW/CALF PAIRS: Scarce

NORTH CENTRAL MISSOURI WEEKLY SUMMARY

(Macon, Unionville, Green City, New Cambria)

Receipts: 1,780 Week ago: 4,582 Year ago: 1,659

Compared to two weeks ago, steers and heifers steady to 5.00 higher, spots up to 10.00 higher. Slaughter cows 10.00 to 15.00 higher. *Some sale barns on a bi-weekly schedule and may not have a sale each week.

FEEDER STEERS:
Medium and Large 1

400-500 lbs.	274.00-297.00
500-600 lbs.	247.00-281.00
600-700 lbs.	231.00-260.50
68 hd 775 lbs.	221.25

FEEDER HEIFERS:
Medium and Large 1

400-500 lbs.	248.50-260.00
500-600 lbs.	220.00-250.00
600-700 lbs.	216.00-224.50
74 hd 747 lbs.	211.85
68 hd 809 lbs.	212.25

SLAUGHTER BULLS: Yield Grade 1-2 1360-2155 lbs ind 120.00; high dressing 132.00-138.00

SLAUGHTER COWS: Breaking and Boning (70-85% lean) 97.00-106.00; high dressing 107.00-127.00. Lean (85-90%) 88.00-98.00

BRED COWS: Scarce

COW & CALF PAIRS: Scarce

SOUTHEAST MISSOURI WEEKLY SUMMARY

(Jackson and Farmington)

Receipts: 1,050 Week ago: 2,133 Year ago: 1,105

Compared to last week, steers and heifers uneven from 10.00 lower to 7.00 higher. Slaughter cows 2.00 higher. Slaughter bulls 1.00 to 4.00 higher.

FEEDER STEERS:
Medium and Large 1

300-400 lbs.	250.00-277.50
400-500 lbs.	235.00-270.00
500-600 lbs.	225.00-262.00
600-700 lbs.	210.00-233.00
700-800 lbs.	180.00-195.00
14 hd 808 lbs.	181.00

FEEDER HEIFERS:
Medium and Large 1

300-400 lbs.	201.00-247.00
400-500 lbs.	200.00-239.00
500-600 lbs.	186.00-217.00
600-700 lbs.	170.00-197.00
700-750 lbs.	175.00-190.00
13 hd 882 lbs.	160.00

SLAUGHTER BULLS: Yield Grade 1-2 1145-2370 lbs. 87.00-109.00; high dressing 110.00-130.00

SLAUGHTER COWS: Breaking and Boning (75-85% lean) 82.00-94.00; high dressing 80.00-104.50. Lean (85-90% lean) 60.00-80.00

BRED COWS: Medium and Large 2 2-8 yrs 1035-1375 lbs 2nd to 3rd stage 900.00-1360.00 per head

COW & CALF PAIRS: Medium and Large 2 2-8 yrs 1000 lbs with 150-300 lb calves 1375.00; >8 yrs 1000 lbs with 150-300 lb calves 1000.00 per pair

EAST CENTRAL MISSOURI WEEKLY SUMMARY

(Cuba, Vienna)

Receipts: 4,425 Week ago: 4,227 Year ago: 4,347

Compared to last week, steers steady to 15.00 higher. Heifers steady to 8.00 higher. Slaughter cows 3.00 to 10.00 higher.

FEEDER STEERS:
Medium and Large 1

300-400 lbs.	267.50-305.00
400-500 lbs.	256.00-300.00
500-600 lbs.	241.00-294.25
600-700 lbs.	217.50-261.50
700-800 lbs.	220.00-233.50

FEEDER HEIFERS:
Medium and Large 1

300-400 lbs.	234.00-255.00
400-500 lbs.	233.00-255.00
500-600 lbs.	219.00-248.50
600-700 lbs.	199.50-235.50
14 hd 745 lbs.	196.75

SLAUGHTER BULLS: Yield Grade 1-2 1450-2150 lbs. 115.00-126.00; high dressing 127.50-137.00

SLAUGHTER COWS: Breaking and Boning, (70-85% lean) 91.50-105.50; high dressing 104.00-115.00; low dressing 88.50-91.50. Lean (85-90%) 82.00-96.00

BRED COWS: Medium and Large 1-2 2-8 yrs 869-1328 lbs 1st to 3rd stage 1100.00-1400.00 per head

COW & CALF PAIRS: Scarce

NORTHWEST MISSOURI WEEKLY SUMMARY

(Tina)

Receipts: 1,512 Week ago: 2,375

Compared to last week, steers traded with a lower undertone on a light test. Heifers steady to 3.00 lower, spots 3.00 higher on 500-600 lbs. Slaughter cows uneven with lean and breaker cows 6.00 to 7.00 higher, and boning cows 1.00 to 2.00 higher. Slaughter bulls 9.00 to 10.00 higher.

FEEDER STEERS:
Medium and Large 1

350-400 lbs.	286.00
400-500 lbs.	270.00-286.00
500-600 lbs.	258.00-278.00
600-600 lbs.	227.50-249.00
700-800 lbs.	214.00-225.00

FEEDER HEIFERS:
Medium and Large 1

300-400 lbs.	231.00-254.00
400-500 lbs.	225.00-241.00
500-600 lbs.	220.00-243.00
600-700 lbs.	196.00-221.00
700-750 lbs.	185.00-195.50

SLAUGHTER BULLS: Yield Grade 1-2 995-1845 lbs 118.50-125.00; low dressing 103.00-111.00

SLAUGHTER COWS: Breaking and Boning, (70-85% lean) 90.00-105.50; high dressing 98.50-109.00. Lean (85-90%) 87.00-94.00

BRED COWS: Medium and Large 1-2 2-4 yrs 1075-1250 lbs 2nd and 3rd stage 1700.00-1950.00 per head.

COW & CALF PAIRS: Medium and Large 1-2 2-4 yrs 1100-1200 lbs with baby to 300 lb calves 2000.00-2800.00 per pair

AFTERNOON NATIONAL SLAUGHTER CATTLE REVIEW

Thus far for Friday negotiated cash trading has been very limited on light demand in Kansas, Nebraska and Western Cornbelt. In the Texas Panhandle negotiated cash trading has been at a standstill. Not enough purchases in any region for a market trend. Wednesday was the last reported market in these regions. In the Southern Plains live purchases traded at 171.00. In Nebraska live and dressed purchases traded from 180.00-182.00 and from 285.00-286.00, respectively. In the Western Cornbelt live and dressed purchases traded at 182.00 and at 285.00, respectively.

Negotiated Cash Sales:

Confirmed:	3,029	Week Ago:	19,014	Year Ago:	4,112
Week to date:	94,733	Week Ago:	63,049	Year Ago:	77,270

<u>Live Basis</u>	<u>Steers</u>	<u>Heifers</u>
Over 80% Choice	174.00-183.00, avg 175.31	174.00
65-80% Choice	-	-
35-65% Choice	-	-
0-35% Choice	-	-
Total All Grades	174.00-183.00, avg 175.31	174.00
Dressed Basis		
Over 80% Choice	280.00-285.50, avg 284.62	287.00
65-80% Choice	-	-
35-65% Choice	-	-
0-35% Choice	-	-
Total All Grades	280.00-285.50, avg 284.62	287.00

<u>All Beef Type Steers/Heifers</u>	<u>Head</u>	<u>Avg Wt</u>	<u>Price Range</u>	<u>Wtd Avg</u>
Live FOB	1650	1333.2	172.50-183.00	178.25
Live Del	277	1479.8	172.50-183.00	178.25
Dressed Del	920	885.3	280.00-287.00	285.51
Dressed FOB	160	899.0	287.00	287.00

WEEKLY COMMODITY FUTURES TRENDS

Compared to last week, Soybeans 0.87 to 1.63 higher, Wheat 3.98 to 8.35 lower, Feeder Cattle 0.22 to 1.18 lower.

Daily Futures Closes

	Mon.	Tues.	Wed.	Thu.	Fri.
Cattle					
Jun	165.05	164.27	166.10	167.30	167.35
Aug	163.60	162.57	164.12	164.77	165.17
Oct	168.15	167.17	168.37	169.02	169.60
Dec	172.12	171.50	172.35	172.85	173.22
Feb	176.22	175.90	176.50	176.87	177.25
Lean Hogs					
Jun	81.82	80.67	79.80	77.65	76.07
Jul	82.15	80.97	80.82	77.25	74.77
Aug	80.30	80.42	80.40	76.95	74.05
Oct	72.80	72.92	73.40	71.20	69.10
Dec	70.35	70.22	70.85	69.47	67.67
Fdr Cat					
May	206.57	207.80	208.97	208.97	—
Aug	234.90	233.47	234.52	234.70	233.92
Sep	237.85	236.75	237.62	238.07	237.10
Oct	239.52	238.67	239.57	240.05	239.02
Nov	239.77	239.00	240.05	240.27	239.15
Milk					
May	16.21	16.21	16.20	16.17	16.16
Jun	16.32	16.55	16.37	16.11	15.88
Jul	16.76	16.94	16.82	16.64	16.58

WEEKLY COMMODITY GRAIN FUTURES TRENDS

Compared to last week, Soybeans 0.12 to 0.30 higher, Wheat 0.09 to 0.12 higher, Corn 0.33 to 0.50 higher, KC Wheat uneven with Jul and Sep 0.01 to 0.05 lower, others 0.02 to 0.07 higher, Soybean Meal 1.50 to 6.90 lower.

Daily Grain Futures Closes

	Mon.	Tues.	Wed.	Thu.	Fri.
Soybeans					
Jul	1341 1/4	1322 1/2	1324 1/2	1324	1337 1/4
Aug	1275 1/2	1258 3/4	1258 3/4	1249 3/4	1261
Sep	1209 3/4	1198 1/4	1195 1/2	1183 3/4	1198 1/2
Nov	1197	1187 3/4	1185	1172 1/4	1189 1/2
Jan	1206 1/2	1197 1/2	1194 3/4	1182 1/2	1199
Wheat					
Jul	606 1/4	622 1/4	606 1/4	604 1/4	616
Sep	618 3/4	634 1/2	619	617 1/4	629 1/2
Dec	636 1/2	651 1/2	637 1/4	636	647 1/2
Mar	651 1/4	665	651	650 3/4	661 1/4
May	658 3/4	671 3/4	657 1/2	657 1/2	668 1/2
Corn					
Jul	571	577 1/2	587 1/4	590 3/4	604
Sep	504 3/4	512	515 1/4	510 1/2	529
Dec	509	516 3/4	520	516	534 1/2
Mar	518 1/2	526 1/4	529 1/2	525 1/2	543 1/4
May	524 1/4	532	535	531 1/4	548
KC Wheat					
Jul	825 3/4	841 1/2	812 1/4	818	819 1/4
Sep	817 3/4	833 3/4	807 3/4	811 3/4	814 1/4
Dec	810 1/4	827	803 1/2	806 1/2	809 1/2
Mar	799 3/4	817 1/4	797	798 1/2	802 1/4
May	788 1/4	805	786 1/2	786 1/4	791 1/2
SB Meal					
Jul	412.20	406.40	402.20	397.20	402.20
Aug	405.50	401.50	398.70	393.00	397.90
Sep	394.90	392.30	390.40	384.30	388.40
Oct	384.10	382.50	381.30	375.20	378.40
Dec	381.20	379.80	378.90	372.80	375.90

MISSOURI GRAIN WEEKLY TRENDS

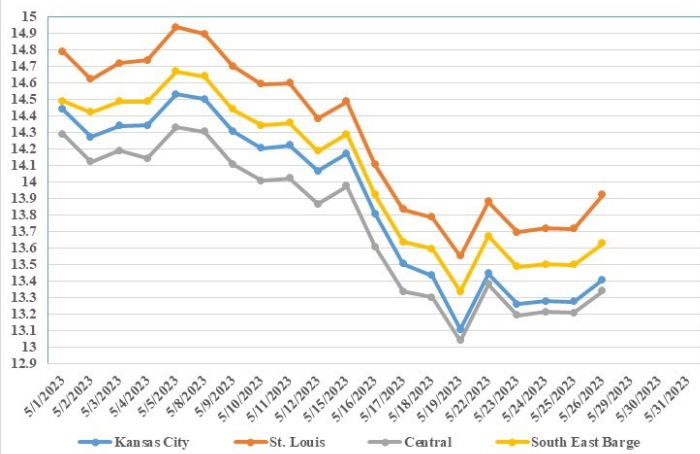
Compared to last week, Soybeans 0.13 to 0.37 higher, Wheat 0.11 higher, Corn 0.49 to 0.69 higher, Sorghum 0.49 to 0.50 higher.

Area	#1 Soybeans	#2 Soft Wheat	#2 Corn	#2 Grain Sorghum
Kansas City				
Friday**	12.97-13.17	6.30	6.00-6.25	6.05
Monday	13.31-13.51	6.31	6.16-6.41	6.21
Tuesday	13.13-13.33	6.47	6.23-6.48	6.28
Wednesday	13.15-13.35	6.31	6.32-6.57	6.37
Thursday	13.14-13.34	6.29	6.36-6.27	6.41
Friday	13.27-13.47	6.41	6.49-6.74	6.54
St. Louis				
Friday**	13.55	6.02-6.05	5.95-6.00	6.60
Monday	13.88	6.03-6.06	6.14-6.16	6.76
Tuesday	13.70	6.19-6.22	6.23	6.83
Wednesday	13.72-13.73	6.03-6.06	6.42-6.44	6.92
Thursday	13.71-13.72	6.01-6.04	6.49	6.96
Friday	13.92	6.13-6.16	6.64	7.09
Central				
Friday**	13.02-13.07	6.05-6.10	6.00-6.05	---
Monday	13.36-13.41	6.06-6.11	6.16-6.21	---
Tuesday	13.18-13.23	6.22-6.27	6.18-6.28	---
Wednesday	13.20-13.25	6.06-6.11	6.27-6.37	---
Thursday	13.14-13.24	6.04-6.09	6.31-6.41	---
Friday	13.27-13.37	6.16-6.21	6.44-6.54	---
S.E. MO				
Friday**	13.27-13.42	---	5.85-5.90	---
Monday	13.61-13.76	---	6.01-6.06	---
Tuesday	13.43-13.58	---	6.08-6.13	---
Wednesday	13.45-13.60	---	6.17-6.22	---
Thursday	13.44-13.59	---	6.21-6.27	---
Friday	13.57-13.72	---	6.34-6.39	---

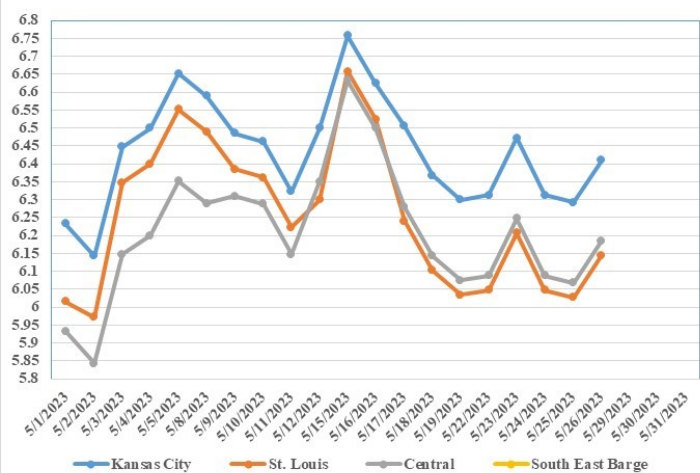
(PRICES PER BUSHEL) *NEW CROP **PREVIOUS WEEK'S PRICES
*Bids calculated using Kansas City, St. Louis, and St. Joseph bids

MONTHLY GRAIN CROP

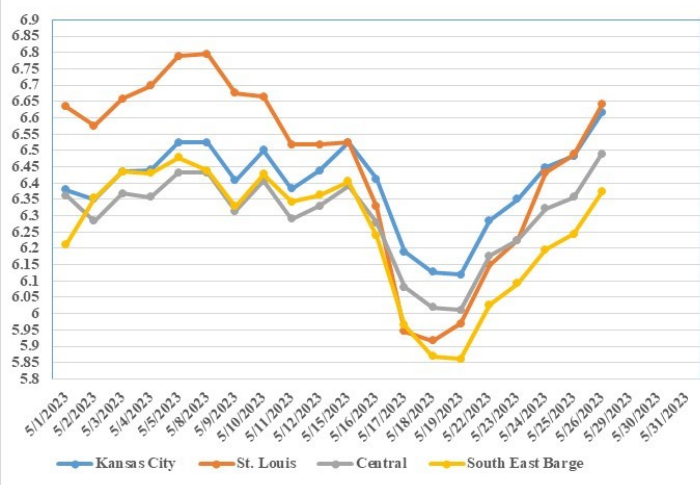
May 2023 Soybean Bids



May 2023 Wheat Bids



May 2023 Corn Bids



*Axis value ranges may be updated to reflect data points.

WHOLESALE FEEDSTUFFS PRICES (DOLLARS PER TON-BULK BASIS)

Area	Soybean Hulls Pellets	Soybean Meal 46.5-48%	Corn Gluten Pellets 21%	Wheat Middlings
Kansas City	190.00	398.20	235.00	160.00
St. Louis	n/a	n/a	240.00	155.00

LIVESTOCK SLAUGHTER

Total Red Meat Production Down in April

April 2022 contained 21 weekdays (including 0 holidays) and 5 Saturdays.

April 2023 contained 20 weekdays (including 0 holidays) and 5 Saturdays.

Commercial red meat production for the United States totaled 4.20 billion pounds in April, down 8 percent from the 4.54 billion pounds produced in April 2022.

Beef production, at 2.07 billion pounds, was 11 percent below the previous year. Cattle slaughter totaled 2.54 million head, down 10 percent from April 2022. The average live weight was down 19 pounds from the previous year, at 1,354 pounds.

Veal production totaled 3.6 million pounds, 21 percent below April a year ago. Calf slaughter totaled 21,900 head, down 22 percent from April 2022. The average live weight was up 3 pounds from last year, at 280 pounds.

Pork production totaled 2.12 billion pounds, down 4 percent from the previous year. Hog slaughter totaled 9.77 million head, down 3 percent from April 2022. The average live weight was down 2 pounds from the previous year, at 291 pounds.

Lamb and mutton production, at 11.0 million pounds, was down 11 percent from April 2022. Sheep slaughter totaled 185,900 head, 6 percent below last year. The average live weight was 117 pounds, down 6 pounds from April a year ago.

January to April 2023 commercial red meat production was 18.1 billion pounds, down 2 percent from 2022. Accumulated beef production was down 5 percent from last year, veal was down 13 percent, pork was up 1 percent from last year, and lamb and mutton production was up slightly.

MISSOURI CROP PROGRESS AND CONDITION

	Week Ending			2018-2022 Average
	05/21/23	05/14/23	05/21/22	
Corn Emerged	88	78	53	65
Soybeans Planted	74	622	35	37
Soybeans Emerged	54	36	15	19
Cotton Planted	81	69	80	63
Rice Planted	97	92	77	81
Rice Emerged	85	77	39	60
Winter Wheat Headed	91	77	84	83
Alfalfa hay 1st cutting	22	5	24	19
Other hay cut	11	2	24	19

MISSOURI WEEKLY HAY SUMMARY 05/25/23

Many producers pull into the hay fields over the last week. Some because it is just that time others in an effort to prevent army worms from eating what grass is there. Thus far no one is bragging about yields and those type of reports aren't expected due to late cold spells then lack of moisture which has resulted in not a lot of growth and early maturity for fescue and orchard grass which makes up a lot of the hay fields around the state. Farmers desperately needing to rebuild supplies following last year's disappointing harvest. Thus far new crop prices seem to be mostly steady with how last even though some input prices have fallen along with fuel cost the lack of supplies are holding prices steady. The supply of hay is light and demand is light to moderate.

Alfalfa - Supreme 250.00-300.00, small square 10.00-15.00 per bale
Alfalfa - Premium 180.00-250.00
Alfalfa - Good 150.00-180.00, small square 5.00-9.00 per bale
Alfalfa - Fair 125.00-150.00
Alfalfa/grass mix - Good/Premium small square 5.00-9.00 per bale
Mixed grass - Good/Premium 125.00-175.00
Mixed grass - Fair/Good 100.00-150.00, small square 5.00-8.00 per bale
Mixed grass - Fair 50.00-100.00 per large round bale
Wheat straw - 4.00-7.00 per small square bale

Please Note: The above volumes (tonnage, acres, and bales) listed on this USDA LPGMN report are for confirmed trades only, it does not include estimated volume (tonnage) for bids or offers to the trade. The current hay directory can be found at: [Hay Directory](#). List your hay for sale at: [Hay Listing Online Form](#). Explanation of Hay Quality Guidelines: [Hay Quality Designation Guidelines](#). Glossary of Terms: [Livestock, Poultry, and Grain Hay Terms](#)

MISSOURI WEEKLY SHEEP/GOAT AUCTION SUMMARY

Receipts: 2,620 Week Ago: 1,587 Last Year: 2,537

SHEEP: Feeder lambs Medium and Large 1-2 40-50 lbs 155.00-167.00. Small and Medium 1-2 hair 25-50 lbs 150.00-235.00. Slaughter lambs Choice and Prime 1-3 w/s pk g48 lbs 155.00; 13 hd 52 lbs 190.00; pkg 62 lbs 152.00; pkg 73 lbs 170.00; pkg 80 lbs 140.00. Choice and Prime 1-3 hair 50-80 lbs 162.00-225.00; 80-90 lbs 145.00-155.00; 95-130 lbs 170.00-189.00. Choice 1-3 hair 50-80 lbs 142.00-190.00. Slaughter ewes Utility and Good 1-3 220-250 lbs 65.00-75.00. Good 2-3 hair 80-125 lbs 100.00-115.00. Utility and Good 1-3 80-170 lbs 70.00-85.00. Utility and Good 1-3 hair 95-130 lbs 90.00-110.00. Cull and Utility 1-2 hair 40.00-77.50. Slaughter bucks 1-2 pkg 243 lbs 88.00. Bucks 1-2 hair 190-195 lbs 85.00-107.50. Replacement ewes Small and Medium 1-2 hair 2-4 yrs 13 hd 95 lbs exp 152.00. Small and Medium 1-2 <1 yrs 35-75 lbs open 115.00-135.00/hd; pkg 80 lbs 190.00/hd; 2-4 yrs 110-120 lbs exp 150.00-200.00/hd; 4-6 yrs 130-138 lbs exp 120.00-160.00/hd. Families Small and Medium 1-2 2-4 yrs 125 lbs exp with <20 lb lambs 240.00-360.00/fam; 4-6 yrs 105-110 lbs exp with <20 lb lambs 180.00-240.00/fam. Small and Medium 1-2 4-6 yrs 105 lbs with 20-40 lb lambs 270.00/fam.

GOATS: Feeder kids Selection 1 30-50 lbs 277.50-340.00. Selection 2 25-40 lbs 235.00-267.00; 40-50 lbs 210.00-282.00. Selection 3 20-30 lbs 152.50-162.50; 30-50 lbs 117.00-157.50. Slaughter kids Selection 1 50-65 lbs 310.00-340.00. Selection 2 50-80 lbs 200.00-290.00. Selection 3 pkg 51 lbs 187.00. Slaughter nannies/does Selection 1-2 pkg 68 lbs 120.00; 70-80 lbs 90.00-105.00; pkg 95 lbs 125.00; 100-135 lbs 90.00-152.00. Selection 1-2 pkg 69 lbs 115.00/hd; pkg 90 lbs 100.00/hd. Slaughter bucks/billies Selection 1-2 pkg 76 lbs 130.00; pkg 92 lbs 175.00. Wethers Selection 1-2 pkg 85 lbs 200.00; pkg 92 lbs 235.00. Wether kids Selection 2 pkg 69 lbs 250.00. Replacement nannies/does Selection 1-2 12 yrs 102 lbs exp 180.00. Selection 1-2 2-4 yrs 80-100 lbs exp 160.00-180.00/hd; 105-110 lbs 150.00-160.00/hd. Families Selection 1-2 2-4 yrs pkg 78 lbs with <20 lb kids 305.00/fam.

Explanatory Notes: Stage - Represents estimated lambing/kidding period (Open, Exp=exposed, Bred, Fall = Sep-Nov, Win = Dec-Feb, Spr = Mar-May, Sum=Jun-Aug; w/s = woolled and shorn; /hd= per head; /fam=per family
All price CWT unless otherwise noted.

MISSOURI DROUGHT MONITOR

Date	None	D0	D1	D2	D3	D4
05/23/23	39.02	23.35	24.74	12.17	0.72	0
05/16/23	39.64	28.04	20.43	11.17	0.72	0
05/24/22	100.00	0	0	0	0	0

Reflects percentage of Missouri impacted by drought. D0 Abnormally Dry; D1 Moderate Drought; D2 Severe Drought; D3 Extreme Drought; D4 Exceptional Drought

NATIONAL DIRECT DELIVERED FEEDER PIG REPORT

05/26/23 Receipts: 81,143 Week ago: 122,200 Year Ago: 82,870
Early weaned pigs steady and feeder pigs 2.00 per head higher.
Early weaned pigs 10-12 lbs. basis: Cash 43,902 head 2.00-17.00, weighted average 10.05
Formula 27,483 head 11.92-50.27, weighted average 31.28
Feeder pigs 40 pounds basis: Cash 9,758 head 40.00-49.00, weighted average 44.18

NATIONAL DAILY DIRECT PRIOR DAY HOG REPORTS FOR 05/26/23

BARROWS AND GILTS (Carcass Basis): 6,981 head
Base Carcass Price 73.00-86.00, weighted average 79.11

SOWS (Live Basis): 7,607 head
300-500 lbs. 8.00-35.00
Over 500 lbs. 10.00-36.00

MISSOURI WEEKLY DIRECT SLAUGHTER CATTLE REPORT 05/26/23

Weekly Receipts: 280 Week ago: 200 Year ago: 320
Trade as of Friday morning: trade is light with flat dressed sales 4.00 to 5.00 higher and grid dressed sales 4.00 higher.

LIVE STEERS & HEIFERS: No sales reported
DRESSED STEERS & HEIFERS: 5 loads Wed 285.00 flat

GRADE AND WEIGHT (Grid): 2 loads Thu 290.00

Click here for the current [National Crop Progress](#)
Click here for the current [Missouri Crop Progress](#)