

Weekly Market Summary

Published by:
Missouri Department of Agriculture
Ag Business Development Division
Market News Program



Chris Chinn, Director
 Jill Wood, Division Director
 Tony Hancock, Editor
<http://www.ams.usda.gov/marketnews.htm>
<http://www.ams.usda.gov/marketnews.htm>

Michael L. Parson, Governor

Volume XLIII, Number 29 ♦ P.O. Box 630, Jefferson City, MO 65102 ♦ (573) 751-4211 ♦ Monday, July 24, 2023

MISSOURI WEEKLY FEEDER CATTLE WEIGHTED AVERAGE REPORT

Receipts: 20,038 Week ago: 44,150 Year ago: 26,823

Steers and Heifers Medium and Large 1—Weighted average weights and prices

STEERS: Medium and Large 1

281 lbs. 299.56	478 lbs. 296.15	670 lbs. 262.74	883 lbs. 228.29
334 lbs. 308.71	523 lbs. 288.83	725 lbs. 248.05	924 lbs. 231.55
379 lbs. 294.32	575 lbs. 283.22	771 lbs. 242.80	956 lbs. 224.39
428 lbs. 301.35	626 lbs. 270.83	825 lbs. 239.59	

HEIFERS: Medium and Large 1

282 lbs. 263.05	476 lbs. 258.13	671 lbs. 242.85
320 lbs. 265.65	523 lbs. 249.87	718 lbs. 234.91
378 lbs. 265.76	568 lbs. 247.67	777 lbs. 218.17
426 lbs. 257.65	624 lbs. 244.30	824 lbs. 208.56

MISSOURI STEER (HEIFER) STOCKER FORMULA 07/24/2023

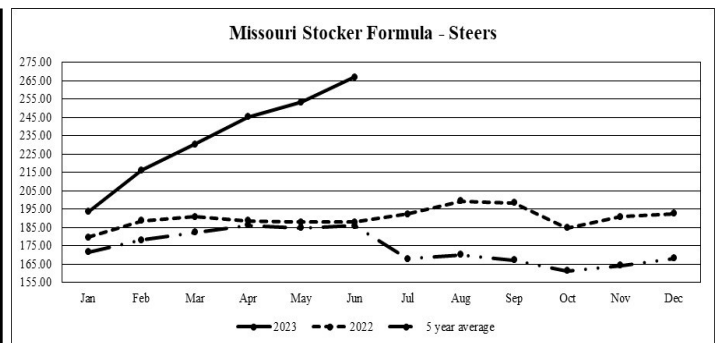
Monday's Missouri Stocker formula consists of **4058 (4403)** head with a weighted average weight of **551.45 (536.06)** lbs. and a price value of **274.20(245.47)**, 0.05 higher (0.26 higher) than last week.

*Correction to last week: 8534 (10,031) head with a weighted average weight of 547.15 (539.71) lbs and a price value of 274.15 (245.21), 19.52 lower (13.42 lower) than last week. This a rolling seven day calculated weighted value which combines all Feeder Steers reported by MDA/USDA Market News Service weighing from 400-649 lbs. in the Medium and Large 1 and Medium and Large 1-2 frame and muscle classifications, including all comment cattle except Brahman X. Heifer values are in parentheses.

MISSOURI WEEKLY CATTLE AUCTION SUMMARY

Compared to last week, feeder sold mostly steady with various spots ranging a few dollars on either side of steady. The supply of feeders was light to moderate, less than half of last week's offering and much more in line with what barns typically see in the middle of summer. Rains over the last couple of weeks have been a mood lifter and slowed the heavily drought influenced sales at least for the time being. Demand was moderate to good but buyers still discounting calves with high health risk especially those showing a lot of hair that just do not perform well in the summer heat. There was a notable uptick in interest for good quality replacement cows mostly from out of state interest. Over the last couple of months the state has seen many bred cows in the prime of their lives removed from production as producers have had to cull herds due to drought and has very few locally have any extra pasture or hay to take them back home. Several reports of loads shipping to states north as word has finally seemed to get out. Two cattle reports were released by USDA on Friday; the monthly cattle on feed report and the semiannual inventory. Most numbers were in line with pre-report expectations with the only major surprise coming with the June placements in feedlot number which was higher than most everyone expected. Overall though supplies are very tight as shown by decreases in total numbers on the inventory report and there is no signs showing any herd rebuilding as a whole at this point. Although the supply at barns was much lighter this week there was still some impressive stick out sales of some load lots around the state. Farmington Regional Stockyards sold 152 head of 594 lb. steers at 297.50. Joplin Regional Stockyards sold a load of 674 lb. steers at 268.00. Callaway Livestock Center had a load of 708 lb. steers which sold for 265.50. A load of 800 lb. steers sold at Lolli Brothers Livestock Market for 250.50 as well as another load of 925 lb. steers at 240.35. Boxed beef cutouts were mixed for the week. Choice closed at 302.74, down 3.20 and select closed at 276.73, up 0.12 compared to last Friday. Negotiated feedlot sales as of the Friday afternoon report totaled a bit over 73K head. Fed cattle prices were stronger in the north with live sales 188.00-191.50 and dressed sales 295.00-300.00. Live sales in the south were mostly steady at 180.00 with some delivered live sales 184.00-185.00 in KS. The Missouri Stocker Formula consist of 4058 head with a weighted average weight of 551.45 lbs. and a price value of 274.20, 0.05 higher than last week. The steer/heifer spread is 28.73.

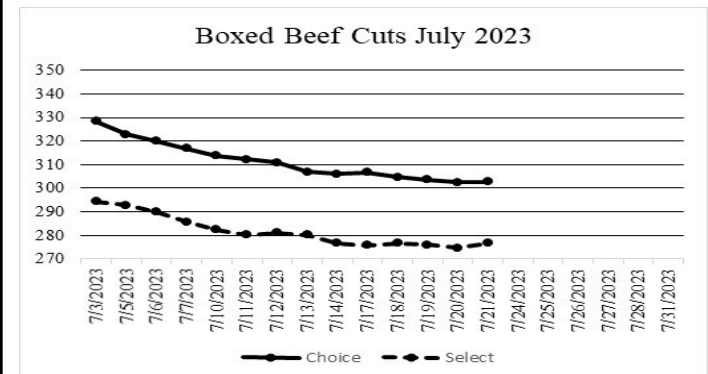
The Weekly Market Summary, as well as historical summaries, are available on our website <https://agmarketnews.mo.gov/summaries>
 Market News Hotline: 1-573-522-9244



*Graph is updated the first Monday of each month. Axis value ranges may be updated to reflect data points.

NATIONAL BOXED BEEF CUTOUT/BOXED BEEF CUTS

<u>DATE</u>	<u>CHOICE</u>	<u>SELECT</u>	<u>TOTAL LOADS</u>
07/17	306.78	275.74	105
07/18	304.68	276.61	123
07/19	303.59	275.96	123
07/20	302.56	274.71	152
07/21	302.74	276.73	103
5 Day Simple Average	304.07	275.95	



*Axis value ranges may be updated to reflect data points.

WEEKLY LIVESTOCK SLAUGHTER 07/22/23

	<u>CATTLE</u>	<u>HOGS</u>	<u>SHEEP</u>
Week to Date:	628,000	2,316,000	33,000
Last Week:	633,000	2,328,000	32,000
Last Year:	663,000	2,295,000	32,000

SOUTHWEST MISSOURI WEEKLY SUMMARY

(Joplin and Springfield)

Receipts: 8,424 Week ago: 17,377 Year ago: 12,617

Compared to last week, steers uneven from 4.00 lower to 5.00 higher and heifers steady to 3.00 higher. Slaughter cows uneven from 2.00 lower to 3.00 higher. Slaughter bulls steady to 4.00 lower.

FEEDER STEERS:
Medium and Large 1

Table with 2 columns: Weight (350-400 lbs to 900-1000 lbs) and Price (285.00-308.00 to 222.00-236.50)

FEEDER HEIFERS:
Medium and Large 1

Table with 2 columns: Weight (300-400 lbs to 10 hd 805 lbs) and Price (257.00-272.00 to 220.50)

FEEDER HOLSTEIN STEERS
Large 3

Scarce Scarce

SLAUGHTER COWS: Breaking and Boning (70-85% lean) 93.00-111.00, high dressing 103.00-124.50; low dressing 82.50-96.00. Lean (85-90%) 83.00-99.50

SLAUGHTER BULLS: Yield Grade 1-2 1140-2360 lbs. 113.00-128.00; high dressing 127.00-137.50; low dressing 102.00-112.00

BRED COWS: Medium and Large 1 2-8 yrs 1115-1390 lbs 2nd to 3rd stage 1565.00-190.00 per head. Medium and Large 1-2 2-8 yrs 839-1390 lbs 2nd to 3rd stage 1025.00-1510.00, 1st stage 1000.00-1350.00 per head

COW & CALF PAIRS: Medium and Large 1 2-8 yrs 1095 lbs with >300 lb calves 2350.00. Medium and Large 1-2 2-8 yrs 1095-1305 lbs with 150-300 lb calves 1575.00-1625.00; >8 yrs 1135-1540 lbs with 150-300 lb calves 1425.00-1650.00 per pair

BRED HEIFERS: Medium and Large 1-2 <2 yrs 882 lbs 1st stage 1100.00; 2-4 yrs 902-1045 lbs 2nd to 3rd stage 1000.00-1425.00 per head

SOUTH CENTRAL MISSOURI WEEKLY SUMMARY

(West Plains, Phillipsburg)

Receipts: 3,822 Week ago: 8,198 Year Ago: 5,844

Compared to last week, steers and heifers steady to 5.00 higher, except yearlings early week steady to 2.00 lower. Slaughter cows steady to 2.00 higher, spots 5.00 higher. Slaughter bulls steady, spots 5.00 higher.

FEEDER STEERS:
Medium and Large 1

Table with 2 columns: Weight (350-400 lbs to 900-1000 lbs) and Price (295.00-306.00 to 212.50-223.00)

FEEDER HEIFERS:
Medium and Large 1

Table with 2 columns: Weight (350-400 lbs to 34 hd 832 lbs) and Price (259.00-269.00 to 202.00)

FEEDER HOLSTEIN STEERS
Large 3

Scarce Scarce

SLAUGHTER COWS: Breaking and Boning (70-85% lean) 97.00-114.00, high dressing 108.00-117.50; low dressing 80.00-96.00. Lean (85-90%) 84.00-97.00

SLAUGHTER BULLS: Yield Grade 1-2 1020-2205 lbs. 107.00-128.00; high dressing 130.00-138.00; low dressing 88.00-115.00

BRED COWS: Medium and Large 1-2 2-8 yrs 972-1280 lbs 2nd to 3rd stage 1200.00-1850.00, 1st stage 1135.00-1650.00; few >8 yrs 1350 lbs 2nd to 3rd stage 1410.00 per head

COW & CALF PAIRS: Medium and Large 1 2-8 yrs 1199-1320 lbs rebred 1st stage with 150-300 lb calves 2400.00-2600.00. Medium and Large 1-2 2-8 yrs 1100-1385 lbs with 150-300 lb calves 1750.00-2000.00; 2-8 yrs 1150-1325 lbs rebred 1st stage with 150-300 lb calves 1825.00-2100.00 per pair

BRED HEIFERS: Medium and Large 1-2 <2 yrs 875-1075 lbs 1st to 3rd stage 1050.00-1250.00; few 2-4 yrs 960-995 lbs 2nd to 3rd stage 1050.00-1400.00 per head

WEST CENTRAL MISSOURI WEEKLY SUMMARY

(Kingsville, Windsor, Butler)

Receipts: 4,665 Week ago: 10,597 Year ago: 4,225

Compared to last week, steers and heifers mostly steady to 5.00 higher. Slaughter cows and bulls steady to 5.00 higher.

FEEDER STEERS:
Medium and Large 1

Table with 2 columns: Weight (350-400 lbs to 70 hd 841 lbs) and Price (300.00-310.00 to 245.10)

FEEDER HEIFERS:
Medium and Large 1

Table with 2 columns: Weight (Pkg 359 lbs to Pkg 793 lbs) and Price (280.00 to 218.00)

SLAUGHTER BULLS: Yield Grade 1-2 955-2340 lbs 115.00-133.00; high dressing 134.00-140.00; low dressing 107.00-121.00

SLAUGHTER COWS: Breaking and Boning (70-85% lean) 97.00-116.00, high dressing 106.00-131.00 low dressing 90.00-103.00. Lean (85-90%) 86.00-104.00

BRED COWS: Medium and Large 1 2-8 yrs 1075-1355 lbs 2nd to 3rd stage 1600.00-1800.00 per head

COW & CALF PAIRS: Medium and Large 1-2 2-8 yrs 1000-1050 lbs with <150 lb calves 1600.00-1700.00; 2-8 yrs 1000-1200 lbs some rebred with 150-300 lb calves 2035.00-2225.00 per pair

NORTHEAST MISSOURI WEEKLY SUMMARY

(Bowling Green, Kingdom City, Palmyra)

Receipts: 2,857 Week ago: 7,827 Year ago: 3,385

Compared to last week, steers under 550 lbs steady to firm, 550-600 lbs steady to 5.00 lower, over 600 lbs steady to 3.00 higher on few comparisons, heifers 400-500 lbs 5.00 to 15.00 higher, 500-600 lbs steady to 5.00 lower, over 600 lbs firm to higher undertone. Slaughter cows steady to 4.00 higher.

FEEDER STEERS:
Medium and Large 1

Table with 2 columns: Weight (400-500 lbs to 850-900 lbs) and Price (308.00-329.00 to 227.75-237.00)

FEEDER HEIFERS:
Medium and Large 1

Table with 2 columns: Weight (300-400 lbs to Pkg 805 lbs) and Price (290.00-315.00 to 216.75)

SLAUGHTER BULLS: Yield Grade 1-2 1305-2465 lbs 115.00-130.00; high dressing 129.00-146.00

SLAUGHTER COWS: Breaking and Boning, (70-85% lean) 100.00-112.00; high dressing 110.00-130.00; low dressing 88.00-97.50. Lean (85-90%) 92.00-100.50

SLAUGHTER STEERS: Choice and Prime 2-4 187.75. Choice 2-3 180.00-185.50.

SLAUGHTER HEIFERS: Choice and Prime 2-4 188.50. Choice 2-3 183.00-185.50

BRED COWS: Medium and Large 1-2 2-8 yrs 1175-1495 lbs 2nd to 3rd stage 1750.00-1900.00; >5 yrs 1267-1400 lbs 2nd to 3rd stage 1460.00-1690.00per head

COW/CALF PAIRS: 2-8 yrs 1100-1150 lbs some rebred 1st stage with 150to >300 lb calves 2225.00-2500.00. Medium and Large 1-2 2-8 yrs 1000-1400 lbs with 150-300 lb calves 1800.00-2075.00; >5 yrs 1000-1250 lbs with 150-300 lb calves 1800.00-1950.00 per pair

NORTH CENTRAL MISSOURI WEEKLY SUMMARY

(Macon, Unionville, Green City, New Cambria)

Receipts: 1,783 Week ago: 1,280 Year ago: 2,575

Compared to two weeks ago, steers 400-600 lbs 10.00 to 15.00 higher, 600-700 lbs 5.00 to 12.00 higher, over 700 lbs firm to higher undertone. Heifers 450-700 lbs 7.00 to 13.00 higher, over 700 lbs higher undertone. Slaughter cows 3.00 to 7.00 higher.

*Some sale barns on a bi-weekly schedule and may not have a sale each week.

FEEDER STEERS:
Medium and Large 1

Table with 2 columns: Weight (400-500 lbs to 900-1000 lbs) and Price (300.00-322.00 to 237.10-240.35)

FEEDER HEIFERS:
Medium and Large 1 & 1-2

Table with 2 columns: Weight (350-400 lbs to 74 hd 716 lbs) and Price (277.50-287.00 to 245.60)

SLAUGHTER BULLS: Yield Grade 1-2 1360-2550 lbs 122.00-127.00; low dressing 129.00-140.00

SLAUGHTER COWS: Breaking and Boning, (70-85% lean) 101.50-107.00, high dressing 110.00-127.00. Lean (85-90%) 92.00-99.00

BRED COWS: Scarce

COW & CALF PAIRS: Scarce

SOUTHEAST MISSOURI WEEKLY SUMMARY

(Jackson and Farmington)

Receipts: 1,894 Week ago: 3,054 Year ago: 1,994

Compared to last week, steers and heifers uneven from 4.00 lower to 5.00 higher. Slaughter cows and bulls 3.00 to 5.00 higher.

FEEDER STEERS:

Medium and Large 1

300-400 lbs.	265.00-300.00
400-500 lbs.	249.00-292.00
500-600 lbs.	243.00-287.00
600-700 lbs.	230.00-260.00
700-800 lbs.	240.00-249.00
800-900 lbs.	215.00-231.00

FEEDER HEIFERS:

Medium and Large 1

300-400 lbs.	229.00-267.00
400-500 lbs.	223.00-257.00
500-600 lbs.	211.00-257.00
600-700 lbs.	200.00-242.00
700-800 lbs.	222.00-228.00
800-900 lbs.	200.00-210.00

SLAUGHTER BULLS: Yield Grade 1-2 1180-2235 lbs. 100.00-122.00; high dressing 111.00-131.00

SLAUGHTER COWS: Breaking and Boning (75-85% lean) 84.00-105.00; high dressing 96.00-112.00. Lean (85-90% lean) 80.00-89.00

BRED COWS: Medium and Large 2 2-8 yrs 1000-1255 lbs 2nd to 3rd stage 1200.00-1435.00 per head

COW & CALF PAIRS: Medium 2 couple 2-8 yrs 950 lbs with <150 lb calves 1550.00; >8 yrs 850 lbs with 150-300 lb calves 960.00-1150.00 per pair

EAST CENTRAL MISSOURI WEEKLY SUMMARY

(Cuba, Vienna)

Receipts: 1,810 Week ago: 4,628 Year ago: 1,902

Compared to last week, steers steady to 2.00 lower. Heifers uneven from 4.00 lower to 6.00 higher. Slaughter cows 2.00 to 4.00 higher.

FEEDER STEERS:

Medium and Large 1

350-400 lbs.	285.00-286.00
400-450 lbs.	285.00-311.00
500-600 lbs.	272.50-291.00
600-650 lbs.	267.00-275.00

FEEDER HEIFERS:

Medium and Large 1

350-400 lbs.	265.00-270.00
400-500 lbs.	250.00-274.00
500-600 lbs.	236.00-266.00
600-700 lbs.	235.00-240.50
Pkg 730 lbs.	235.00
Pkg 815 lbs.	220.00

SLAUGHTER BULLS: Yield Grade 1-2 1210-2190 lbs 113.00-126.00; high dressing 132.00-137.00; low dressing few 102.00-113.00

SLAUGHTER COWS: Breaking and Boning, (70-85% lean) 99.00-110.00; high dressing 110.50-133.00; low dressing 94.00-100.00. Lean (85-90%) 88.00-99.50

BRED COWS: Medium and Large 1-2 2-8 yrs 1005-1440 lbs 2nd to 3rd stage 1375.00-1600.00 per head

COW & CALF PAIRS: Medium and Large 1-2 couple 5-8 yrs 1050 lbs with >300 lb calves 2300.00 per pair

NORTHWEST MISSOURI WEEKLY SUMMARY

(Tina) (w/e 7/14/23)

Receipts: 2,185 Week ago: 890 Year Ago: 1,174

Compared to a light test two weeks ago, feeders traded with sharply higher undertones with few good comparisons. Slaughter cows 5.00 to 8.00 higher.

FEEDER STEERS:

Medium and Large 1

400-500 lbs.	293.00-315.00
500-600 lbs.	286.00-299.50
600-700 lbs.	259.00-290.00
750-800 lbs.	242.00-247.50

FEEDER HEIFERS:

Medium and Large 1

400-500 lbs.	259.00-271.00
500-600 lbs.	253.00-275.00
600-700 lbs.	234.00-247.50
700-800 lbs.	218.00-241.25
Pkg 847 lbs.	208.00

SLAUGHTER BULLS: Yield Grade 1-2 1065-2145 lbs 118.50-129.50; high dressing 132.00-139.00

SLAUGHTER COWS: Breaking and Boning, (70-85% lean) 96.00-109.50; high dressing 107.00-120.00. Lean (85-90%) 90.00-99.00

BRED COWS: Scarce

COW & CALF PAIRS: Medium and Large 1-2 couple >8 yrs 1000-1350 lbs with 150-300 lb calves 1700.00-1725.00; couple 5-8 yrs 1250-1395 lbs with >300 lb calves 1800.00-2035.00 per pair

AFTERNOON NATIONAL SLAUGHTER CATTLE REVIEW

So far for Friday in all major feeding regions negotiated cash trade has been slow to moderate with moderate demand. In the Texas Panhandle, compared to the last reported market on Thursday, Live FOB purchases traded steady at 180.00. In Kansas, compared to the last reported market on Thursday, Live FOB purchases traded mostly steady at 180.00, with a few up to 187.00. Noted, for Friday, in Kansas Live Delivered purchases traded from 184.00-185.00. In Nebraska, compared to the last reported market, Live FOB purchases traded mostly steady at 188.00, with a few up to 191.50. Compared to last week Dressed Delivered purchases traded 3.00-5.00 higher at 295.00, with a few up to 298.00. In the Western Cornbelt not enough Live FOB or Dressed Delivered purchases for a full market trend. The last reported Live FOB purchase market was on Thursday at 188.00. Last week Dressed Delivered purchases traded from 290.00-295.00. Noted, for Friday, Dressed FOB purchases traded at 300.00.

Negotiated Cash Sales:

Confirmed:	26,214	Week Ago:	15,009	Year Ago:	4,613
Week to date:	73,021	Week Ago:	35,663	Year Ago:	62,402

<u>Live Basis</u>	<u>Steers</u>	<u>Heifers</u>
Over 80% Choice	180.00-191.50, avg 187.93	180.00-191.50, avg 185.41
65-80% Choice	180.00-187.00, avg 180.21	180.00
35-65% Choice	180.00	180.00
0-35% Choice	-	-
Total All Grades	180.00-191.50, avg 183.70	180.00-191.50, avg 183.07
Dressed Basis		
Over 80% Choice	295.00-300.00, avg 296.15	295.00
65-80% Choice	295.00	295.00
35-65% Choice	-	-
0-35% Choice	-	-
Total All Grades	295.00-300.00, avg 295.72	295.00

<u>All Beef Type Steers/Heifers</u>	<u>Head</u>	<u>Avg Wt</u>	<u>Price Range</u>	<u>Wtd Avg</u>
Live FOB	12,606	1,368.6	180.00-191.50	184.02
Live Del	5,308	1,332.7	184.00-190.00	184.84
Dressed Del	5,895	892.6	287.00-300.00	295.67
Dressed FOB	2,065	840.6	300.00	300.00

WEEKLY COMMODITY FUTURES TRENDS

Compared to last week, Live Cattle 0.15 to 0.72 lower, except Apr 0.42 higher, Lean Hogs 0.40 to 0.70 higher, Feeder Cattle Aug 0.73 lower, others 0.05 to 0.93 higher.

Daily Futures Closes

	Mon.	Tues.	Wed.	Thu.	Fri.
Cattle					
Aug	180.12	181.27	181.32	180.32	180.02
Oct	182.25	183.55	183.72	182.75	181.90
Dec	185.85	187.00	187.02	185.97	185.17
Feb	188.57	189.47	189.65	188.85	188.32
Apr	190.10	190.92	191.30	190.70	190.52
Lean Hogs					
Jul	102.35	—	—	—	—
Aug	94.77	96.27	97.92	100.62	100.67
Oct	82.32	81.47	81.72	84.72	84.25
Dec	75.95	75.20	74.95	77.25	76.82
Feb	80.02	79.72	79.55	81.20	90.92
Fdr Cat					
Aug	249.25	248.00	246.80	245.10	245.92
Sep	251.42	250.00	249.32	248.30	249.27
Oct	252.35	251.07	250.55	249.82	251.00
Nov	252.12	251.17	250.57	249.97	251.25
Jan	249.70	248.77	248.37	248.02	249.40
Milk					
Jul	13.83	13.86	13.84	13.77	13.81
Aug	15.31	15.80	15.74	16.27	16.71
Sep	16.11	16.50	16.41	17.13	17.67

WEEKLY COMMODITY GRAIN FUTURES TRENDS

Compared to last week, Soybeans 0.21 to 0.32 higher, Wheat 0.32 to 0.38 higher, Corn 0.21 to 0.23 higher, KC Wheat 0.27 to 0.33 higher, Soybean Meal 6.10 to 19.00 higher.

Daily Grain Futures Closes

	Mon.	Tues.	Wed.	Thu.	Fri.
Soybeans					
Aug	1484	1492	1491 1/2	1495	1501
Sep	1407 1/4	1418 3/4	1432	1426 1/4	1429
Nov	1378	1395 1/4	1408 3/4	1404 3/4	1401 3/4
Jan	1384 1/2	1401	1414 1/2	1410 1/2	1408 1/4
Mar	1371 3/4	1387	1399 3/4	1399 1/4	1397 3/4
Wheat					
Sep	653 3/4	670 3/4	727 3/4	727	697 1/2
Dec	673 3/4	690 1/2	745 1/2	746 1/4	717 3/4
Mar	689	706 1/4	759 1/4	760 1/2	734 1/2
May	696 3/4	713 3/4	763 3/4	764 1/2	741 1/4
Jul	699 3/4	717 1/4	762 1/2	760 3/4	739
Corn					
Sep	499 1/4	528 3/4	545 1/2	537 1/4	527
Dec	506	534 1/2	553	546 1/4	536 1/4
Mar	517 1/4	544 1/2	563 1/4	557 1/2	547 1/2
May	524 1/4	550 1/4	569	563 3/4	554
Jul	527 1/2	552 1/4	570 1/4	565 1/2	556 1/4
KC Wheat					
Sep	815 1/4	827 1/4	866 3/4	874 3/4	860 1/4
Dec	820	832 1/4	872 1/2	880 3/4	866 3/4
Mar	817 1/4	829 3/4	870	875 1/2	861 1/4
May	807 3/4	821 1/4	862 3/4	867 1/4	852 3/4
Jul	784 3/4	799 3/4	840 1/4	835 3/4	819
SB Meal					
Aug	434.40	442.70	443.80	440.50	442.80
Sep	422.20	429.10	429.30	425.60	426.30
Oct	411.50	418.50	417.40	413.00	411.50
Dec	409.40	416.20	414.90	410.60	408.50
Jan	405.90	412.90	411.00	407.00	403.70

MISSOURI GRAIN WEEKLY TRENDS

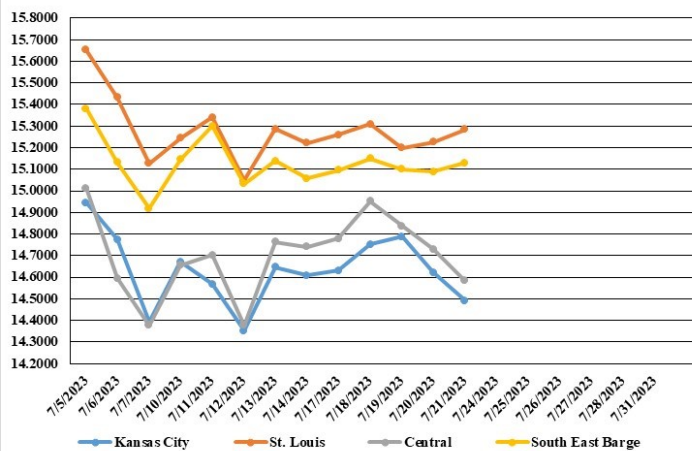
Compared to last week, Soybeans 0.24 lower to 0.09 higher, Wheat 0.06 to 0.16 higher, Corn 0.02 lower to 0.26 higher, Sorghum 0.20 to 0.21 higher.

Area	#1 Soybeans	#2 Soft Wheat	#2 Corn	#2 Grain Sorghum
Kansas City				
Friday**	14.61	6.82	5.72-5.87	5.42
Monday	14.58-14.68	6.74	5.64-5.79	5.34
Tuesday	14.75	6.91	5.94-6.09	5.64
Wednesday	14.79	7.48	6.11-6.26	5.81
Thursday	14.60-14.65	7.27	6.02-6.17	5.72
Friday	14.42-14.57	6.98	5.92	5.62
St. Louis				
Friday**	15.22	6.36-6.42	5.87-5.94	6.82
Monday	15.26	6.28-6.34	5.79-5.85	6.74
Tuesday	15.28-15.34	6.45-6.47	6.14-6.15	7.04
Wednesday	15.19-15.22	7.02-7.04	6.16-6.28	7.21
Thursday	15.20-15.25	6.75-7.03	6.01-6.02	7.12
Friday	15.26-15.31	6.46-6.48	5.89-5.92	7.02
Central				
Friday**	14.71-14.81	6.32-6.67	5.62-5.67	---
Monday	14.68-14.88	6.24-6.59	5.54-5.59	---
Tuesday	14.85-15.05	6.41-6.76	5.84-5.89	---
Wednesday	14.74-14.99	6.98-7.33	6.01-6.06	---
Thursday	14.70-14.75	6.92-7.02	5.92-5.97	---
Friday	14.57-14.62	6.63-6.73	5.82-5.87	---
S.E. MO				
Friday**	14.91-15.20	6.27-6.32	5.37-5.67	---
Monday	14.95-15.24	6.18-6.24	5.23-5.59	---
Tuesday	15.03-15.27	6.35-6.41	5.53-5.79	---
Wednesday	14.99-15.22	6.88-6.98	5.70-5.96	---
Thursday	15.03-15.15	6.77-6.87	5.61-5.87	---
Friday	15.05-15.21	6.31-6.58	5.50-5.67	---

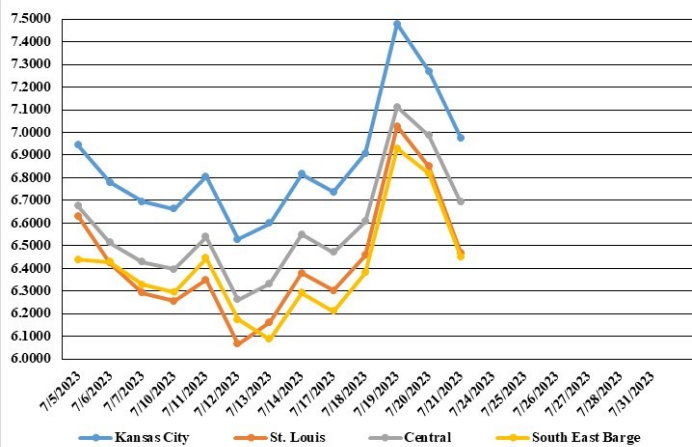
(PRICES PER BUSHEL) *NEW CROP **PREVIOUS WEEK'S PRICES
*Bids calculated using Kansas City, St. Louis, and St. Joseph bids

MONTHLY GRAIN CROP

July 2023 Soybean Bids



July 2023 Wheat Bids



July 2023 Corn Bids



*Axis value ranges may be updated to reflect data points.

**WHOLESALE FEEDSTUFFS PRICES
(DOLLARS PER TON-BULK BASIS)**

Area	Soybean Hulls Pellets	Soybean Meal 46.5-48%	Corn Gluten Pellets 21%	Wheat Middlings
Kansas City	222.50	450.30	240.00	172.67
St. Louis	n/a	n/a	237.50	166.00

CATTLE ON FEED

Cattle and calves on feed for the slaughter market in the United States for feedlots with capacity of 1,000 or more head totaled 11.2 million head on July 1, 2023. The inventory was 2 percent below July 1, 2022. The inventory included 6.73 million steers and steer calves, down 3 percent from the previous year. This group accounted for 60 percent of the total inventory. Heifers and heifer calves accounted for 4.47 million head, unchanged from 2022. **Placements** in feedlots during June totaled 1.68 million head, 3 percent above 2022. Net placements were 1.61 million head. During June, placements of cattle and calves weighing less than 600 pounds were 390,000 head, 600-699 pounds were 275,000 head, 700-799 pounds were 380,000 head, 800-899 pounds were 368,000 head, 900-999 pounds were 185,000 head, and 1,000 pounds and greater were 80,000 head. **Marketings** of fed cattle during June totaled 1.96 million head, 5 percent below 2022. **Other disappearance** totaled 69,000 head during June, unchanged from 2022.

CATTLE

All cattle and calves in the United States on July 1, 2023 totaled 95.9 million head, 3 percent below the 98.6 million head on July 1, 2022. **All cows and heifers** that have calved totaled 38.8 million head, 2 percent below the 39.6 million head on July 1, 2022. Beef cows, at 29.4 million head, down 3 percent from a year ago. Milk cows, at 9.40 million head, unchanged from previous year. **All heifers 500 pounds and over** on July 1, 2023 totaled 15.0 million head, 4 percent below the 15.6 million head on July 1, 2022. Beef replacement heifers, at 4.05 million head, down 2 percent from a year ago. Milk replacement heifers, at 3.65 million head, down 3 percent from previous year. Other heifers, at 7.30 million head, 5 percent below a year earlier. **Steers 500 pounds and over** on July 1, 2023 totaled 13.9 million head, down 3 percent from July 1, 2022. **Bulls 500 pounds and over** on July 1, 2023 totaled 1.90 million head, down 5 percent from previous year. **Calves under 500 pounds** on July 1, 2023 totaled 26.3 million head, down 3 percent from a year earlier. **Cattle and calves on feed** for the slaughter market in the United States for all feedlots totaled 13.1 million head on July 1, 2023, down 2 percent from previous year. Cattle on feed in feedlots with capacity of 1,000 or more head accounted for 85.5 percent of the total cattle on feed on July 1, 2023, up slightly from previous year. The total of calves under 500 pounds and other heifers and steers over 500 pounds (outside of feedlots), at 34.4 million head, down 4 percent from the 35.7 million head on July 1, 2022. The 2023 calf crop in the United States is expected to be 33.8 million head, down 2 percent from last year. Calves born during the first half of 2023 are estimated at 24.8 million head, down 2 percent from the first half of 2022. An additional 9.00 million calves are expected to be born during the second half of 2023.

MISSOURI CROP PROGRESS AND CONDITION 07/17/23

	Week Ending			2018-2022 Average
	07/16/23	07/09/23	07/16/22	
Corn silking	81	52	61	66
Corn dough	21	3	13	12
Soybeans Blooming	56	37	30	36
Soybeans setting pods	19	6	7	11
Alfalfa hay 2nd cutting	84	80	78	74
Alfalfa hay 3rd cutting	12	1	1	5
Other hay cut	92	89	89	89

MISSOURI WEEKLY HAY SUMMARY 07/20/23

Rains have continued to fall around the state providing varying amounts of moisture and have provided an ever so slight amount of improvement to the latest drought monitor. Some areas have seen some green appear from the moisture but many areas are going to need a lot more before any improvement will really be seen. Emergency CRP haying and grazing was opened up this week, approximately 58 percent of the state falls under guidelines that will allow haying or grazing request to be granted. Land owners must contact local FSA offices prior to any activity or to get more information. Hay demand is good to very good. The supply is light. Hay prices are firm. The Missouri Department of Agriculture has a hay directory visit <http://mda.mo.gov/abd/haydirectory/> for listings of hay <http://agebb.missouri.edu/haylst/>

- Alfalfa - Supreme 250.00-300.00, small square 10.00-15.00 per bale
- Alfalfa - Premium 200.00-250.00
- Alfalfa - Good 150.00-200.00, small square 5.00-10.00 per bale
- Alfalfa - Fair 125.00-150.00
- Alfalfa/grass mix - Good/Premium small square 5.00-10.00 per bale
- Mixed grass - Good/Premium 150.00-225.00
- Mixed grass - Fair/Good 100.00-175.00, small square 5.00-8.00 per bale
- Mixed grass - Fair 50.00-100.00 per large round bale
- Wheat straw - 4.00-7.00 per small square bale

MISSOURI WEEKLY SHEEP/GOAT AUCTION SUMMARY

Receipts: 3,940 Week Ago: 845 Last Year: 1,549

SHEEP: Feeder lambs Medium and Large 1-2 30-40 lbs 130.00-160.00. Small and Medium 1-2 hair 20-30 lbs 215.00-225.00, 30-40 lbs 165.00-225.00; 40-50 lbs 180.00-210.00; 50 lbs 1975.00-200.00, thin 130.00. Slaughter lambs Choice and Prime 1-3 w/s pkg 53 lbs 150.00; pkg 72 lbs 180.00; 80-135 lbs 150.00-170.00. Choice 1-3 pkg 65 lbs 135.00; pkg 70 lbs 125.00. Choice and Prime 1-2 woolled pkg 65 lbs 175.00; pkg 98 lbs 170.00. Choice and Prime 1-2 hair 40-60 lbs 155.00-175.00; 60-70 lbs 162.00-202.00; 70-80 lbs 167.00-182.00; 80-90 lbs 125.00-165.00; pkg 125 lbs 170.00. Choice and Prime 1-3 hair 50-70 lbs 160.00-215.00; 70-90 lbs 155.00-185.00; 90-100 lbs 145.00-155.00. Choice 1-3 hair 50-80 lbs 145.00-180.00. Slaughter ewes Utility and Good 1-3 pkg 170 lbs 70.00. Utility and Good 2 90-100 lbs 70.00-75.00; 100-140 lbs 70.00-110.00. Good 2-3 pkg 82 lbs 125.00; pkg 90 lbs 92.50; 20 hd 112 lbs 105.00. Good 2-3 hair pkg 114 lbs 105.00 per head. Utility and Good 1-3 hair 85-150 lbs 70.00-87.50. Utility and Good 1-3 90-100 lbs 80.00-85.00; 110-125 lbs 75.00-105.00. Cull and Utility 1-2 hair 80-110 lbs 50.00-65.00. Bucks 1-2 150-195 lbs 80.00-135.00. Bucks 1-2 hair pkg 98 lbs 145.00. Replacement ewes Medium and Large 1-2 1-2 yrs 85-95 lbs exp 130.00-155.00; 100-132 lbs exp 117.00-187.00. Small and Medium 1-2 hair 2-4 yrs 128 lbs exp 152.50; 4-6 yrs 105 lbs fall 110.00. Small and Medium <1 yrs 45-60 lbs open 120.00-125.00/hd; 1-2 yrs 75-105 lbs exp 130.00-175.00/hd; 2-4 yrs 125-200 lbs exp 200.00-220.00/hd. Families Small and Medium 1-2 1-2 yrs 78 lbs exp with 20-40 lb lambs; 2-4 yrs 94 lbs exp with 20-40 lb lambs 170.00/unit. Bucks Medium and Large 1 <1 yrs 120 lbs 185.00.

GOATS: Feeder kids Selection 1 30-40 lbs 210.00-285.00; 40-50 lbs 270.00-275.00. Selection 1-2 30-40 lbs 125.00-177.00. Selection 2 25-50 lbs 195.00-250.00. Selection 3 25-45 lbs 95.00-180.00, pygmies 130.00-162.50. Wether kids Selection 2 40-50 lbs 185.00-195.00. Slaughter kids Selection 1 40-50 lbs 210.00-225.00; 50-85 lbs 240.00-275.00. Selection 1-2 pkg 50 lbs 200.00; 60-70 lbs 242.00-265.00; pkg 80 lbs 227.00. Selection 2 pkg 35 lbs 210.00; 50-70 lbs 190.00-250.00. Selection 3 50-65 lbs 115.00-180.00. Slaughter nannies/does Selection 1-2 60-75 lbs 120.00-140.00; 80-90 lbs 85.00-155.00; 90-100 lbs 105.00-215.00; 100-125 lbs 95.00-145.00. Selection 1-2 80-95 lbs 100.00-135.00/hd. Slaughter bucks/billies Selection 1-2 pkg 65 lbs 150.00; 70-85 lbs 215.00-230.00; 100-185 lbs 150.00-200.00. Replacement nannies/does Selection 1-2 2-4 yrs 80-115 lbs exp 160.00-210.00. Selection 1-2 <1 yrs 72 lbs exp 195.00/hd; 1-2 yrs 97 lbs exp 225.00/hd

Explanatory Notes: Stage - Represents estimated lambing/kidding period (Open, Exp=exposed, Bred, Fall = Sep-Nov, Win = Dec-Feb, Spr = Mar-May, Sum=Jun-Aug; w/s = woolled and shorn; /hd = per head; /fam=per family All price CWT unless otherwise noted.

MISSOURI DROUGHT MONITOR

Date	None	D0	D1	D2	D3	D4
07/18/23	4.66	16.39	27.82	27.95	21.03	2.15
07/11/23	0.24	18.00	23.56	32.44	22.51	3.25
07/19/22	26.36	22.92	17.59	31.05	2.08	0

Reflects percentage of Missouri impacted by drought. D0 Abnormally Dry; D1 Moderate Drought; D2 Severe Drought; D3 Extreme Drought; D4 Exceptional Drought

NATIONAL DIRECT DELIVERED FEEDER PIG REPORT

07/21/23 Receipts: 81,948 Week ago: 119,260 Year Ago: 55,456 Early weaned pigs and feeder pigs mostly steady. Early weaned pigs 10-12 lbs. basis: Cash 62,800 head 4.00-18.00, weighted average 11.97. Formula 10,205 head 19.56-50.41, weighted average 36.86. Feeder pigs 40 pounds basis: Cash 8,943 head 26.00-44.00, weighted average 36.58.

NATIONAL DAILY DIRECT PRIOR DAY HOG REPORTS FOR 07/21/23

BARROWS AND GILTS (Carcass Basis): 5,663 head Base Carcass Price 91.00-108.00, weighted average 104.73

SOWS (Live Basis): 7,959 head
300-500 lbs. 17.00-57.00
Over 500 lbs. 37.70-59.00

MISSOURI WEEKLY DIRECT SLAUGHTER CATTLE REPORT 07/21/23

Weekly Receipts: 440 Week ago: 0 Year ago: 280 Trade as of Friday morning: trade was light with flat dressed sales at 294.00 and dressed sales at 300.00, 4.00 higher than last week's bid.

LIVE STEERS & HEIFERS: 3 loads FOB 188.00 **DRESSED STEERS & HEIFERS:** 4 loads flat 294.00

GRADE AND WEIGHT (Grid): 4 loads 300.00

Click here for the current [National Crop Progress](#)
Click here for the current [Missouri Crop Progress](#)
The current hay directory can be found at: [Hay Directory](#).

Please Note: The above volumes (tonnage, acres, and bales) listed are for confirmed trades only, it does not include estimated volume (tonnage) for bids or offers to the trade. List your hay for sale at: [Hay Listing Online Form](#). Explanation of Hay Quality Guidelines: [Hay Quality Designation Guidelines](#). Glossary of Terms: [Livestock, Poultry, & Grain Hay Terms](#)