

Weekly Market Summary

Published by:
Missouri Department of Agriculture
Ag Business Development Division
Market News Program



Chris Chinn, Director
 Jill Wood, Division Director
 Tony Hancock, Editor
<http://www.ams.usda.gov/marketnews.htm>
<http://www.ams.usda.gov/marketnews.htm>

Michael L. Parson, Governor

Volume XLIII, Number 30 ♦ P.O. Box 630, Jefferson City, MO 65102 ♦ (573) 751-4211 ♦ Monday, July 31, 2023

MISSOURI WEEKLY FEEDER CATTLE WEIGHTED AVERAGE REPORT

Receipts: 18,390 Week ago: 20,038 Year ago: 21,691

Steers and Heifers Medium and Large 1—Weighted average weights and prices

STEERS: Medium and Large 1

321 lbs. 303.24 522 lbs. 289.72 729 lbs. 250.26 924 lbs. 229.40
 382 lbs. 289.32 574 lbs. 279.46 767 lbs. 242.30
 430 lbs. 294.77 622 lbs. 273.76 824 lbs. 245.83
 478 lbs. 290.12 673 lbs. 261.98 867 lbs. 244.83

HEIFERS: Medium and Large 1

337 lbs. 261.70 525 lbs. 254.02 720 lbs. 242.14 974 lbs. 187.00
 385 lbs. 259.58 571 lbs. 246.67 777 lbs. 227.33
 429 lbs. 256.37 621 lbs. 244.91 817 lbs. 206.40
 476 lbs. 254.72 671 lbs. 247.60 863 lbs. 209.50

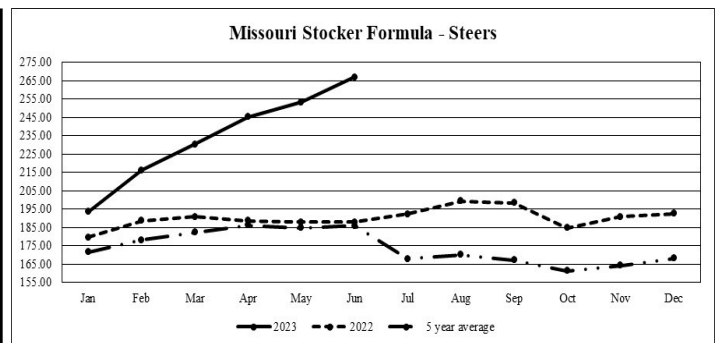
MISSOURI STEER (HEIFER) STOCKER FORMULA 07/31/2023

Monday's Missouri Stocker formula consists of **3014 (3486)** head with a weighted average weight of **555.14 (534.80)** lbs. and a price value of **272.01(245.27)**, 2.19 lower (0.20 lower) than last week.

This a rolling seven day calculated weighted value which combines all Feeder Steers reported by MDA/USDA Market News Service weighing from 400-649 lbs. in the Medium and Large 1 and Medium and Large 1-2 frame and muscle classifications, including all comment cattle except Brahman X. Heifer values are in parentheses.

MISSOURI WEEKLY CATTLE AUCTION SUMMARY

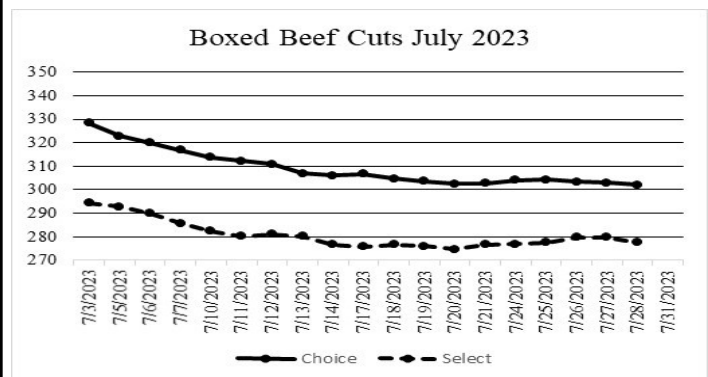
Compared to last week, calves sold uneven from 10.00 lower to 5.00 higher but most sales were on the lower side this week. Yearlings 700 lbs. and above sold steady to 5.00 higher, although heifers over 750 lbs. were only lightly tested this week. The supply of feeders was light to moderate and pretty typical of a late July offering. Extreme heat dampened buyer's excitement on the calf market this week and those high risk calves continue to find very little excitement. Yearlings on the other hand, many of which that are still out there have been held back typically in load lots garner a lot of excitement and continue to sale at or near record high prices. Generally the producers that keep yearlings to market this time of know how to play the game and are bringing uniform load lots without too much condition, long time weaned with all the shots and buyers eagerly pay for that type of management. A few stick out sales this week included, 81 head of 617 lb. steers at Unionville Livestock Market that sold for 294.00, there was also 5 loads of reputation steers all around 850 lbs. that sold from 249.10-251.25. Tina Livestock Market sold 104 head of reputation steers that averaged 809 lbs. for 255.25. Load lots of calves are nearly nonexistent but 24 head of 430 lb. steers weaned, shots and uniform sold at 313.00. Slaughter cows continue to sell at very high prices with most average dressing breaking and boning cows 105.00-110.00 with some of the high dressing cows getting into the high 130's and low 140's now. Demand for replacement cows has seen a bit of an uptick with much of it coming from states to the north as of right now even the high quality bred cows appear to be a bargain compared to what cull weight up cows are selling at. Locally very few have feed to take any home however. Boxed beef cutouts were mixed for the week. Choice closed at 302.00, down 0.74 and select closed at 277.54, up 0.81 compared to last Friday. Negotiated feedlot sales as of the Friday afternoon was very limited with only about 19K head. There was undoubtedly more trade that occurred after the report cutoff. The majority of sales reported were in Iowa with live sales at Fed cattle prices were stronger in the north with live sales 185.00-188.00 and dressed sales 291.00-295.00. The Missouri Stocker Formula consist of 3014 head with a weighted average weight of 555.14 lbs. and a price value of 272.01, 2.19 lower than last week. The steer/heifer spread is 26.74.



*Graph is updated the first Monday of each month. Axis value ranges may be updated to reflect data points.

NATIONAL BOXED BEEF CUTOUT/BOXED BEEF CUTS

<u>DATE</u>	<u>CHOICE</u>	<u>SELECT</u>	<u>TOTAL LOADS</u>
07/24	304.16	276.99	99
07/25	304.22	277.55	149
07/26	303.34	279.81	114
07/27	302.86	279.76	114
07/28	302.00	277.54	101
5 Day Simple Average	303.32	278.33	



*Axis value ranges may be updated to reflect data points.

WEEKLY LIVESTOCK SLAUGHTER 07/29/23

	<u>CATTLE</u>	<u>HOGS</u>	<u>SHEEP</u>
Week to Date:	619,000	2,392,000	32,000
Last Week:	624,000	2,316,000	33,000
Last Year:	666,000	2,292,000	31,000

The Weekly Market Summary, as well as historical summaries, are available on our website <https://agmarketnews.mo.gov/summaries>
 Market News Hotline: 1-573-522-9244

SOUTHWEST MISSOURI WEEKLY SUMMARY

(Joplin and Springfield)

Receipts: 6,823 Week ago: 8,424 Year ago: 8,439

Compared to last week, steers steady to 3.00 lower and heifers mostly steady to 5.00 higher with most of the gain over 525 lbs. Slaughter cows 2.00 to 6.00 higher. Slaughter bulls steady to 2.00 higher.

FEEDER STEERS:
Medium and Large 1

300-350 lbs.	300.00-305.00
400-500 lbs.	270.00-293.00
500-600 lbs.	260.00-287.00
600-700 lbs.	242.00-282.00
700-800 lbs.	231.00-245.00
800-850 lbs.	234.00-240.00
900-950 lbs.	223.00-227.50

FEEDER HEIFERS:
Medium and Large 1

17 hd 348 lbs.	274.00
400-500 lbs.	240.00-262.00
500-600 lbs.	228.00-263.00
600-700 lbs.	222.00-254.00
700-800 lbs.	225.00-233.00
20 hd 974 lbs.	187.00

FEEDER HOLSTEIN STEERS
Large 3

400-450 lbs.	162.00-171.00
500-600 lbs.	164.00-179.00
600-700 lbs.	147.00-173.00
700-800 lbs.	160.00-165.50

SLAUGHTER COWS: Breaking and Boning (70-85% lean) 95.00-114.00, high dressing 109.00-124.00; low dressing 94.00-102.00. Lean (85-90%) 86.00-101.00

SLAUGHTER BULLS: Yield Grade 1-2 1215-2280 lbs. 110.00-130.00; high dressing 118.00-142.00; low dressing 100.00-113.00

BRED COWS: Medium and Large 1 2-8 yrs 1115-1405 lbs 2nd to 3rd stage 1510.00-1775.00; >8 yrs 1363-1464 lbs 2nd to 3rd stage 1600.00-1670.00. Medium and Large 1-2 2-8 yrs 880-1276 lbs 2nd to 3rd stage 1200.00-1625.00, 1st stage 1075.00-1360.00 per head
BRED HEIFERS: Medium and Large 1-2 <2 yrs 7 hd 940 lbs 2nd to 3rd stage 1775.00 per head

COW & CALF PAIRS: Medium and Large 1-2 >8 yrs 1260-1346 lbs some rebred 1st stage with 150-300 lb calves 1550.00-1750.00; >5 yrs 1417-1517 lbs some rebred 1st stage with >300 lb calves 1775.00-1900.00 per pair

SOUTH CENTRAL MISSOURI WEEKLY SUMMARY

(West Plains, Phillipsburg)

Receipts: 4,707 Week ago: 3,822 Year Ago: 3,853

Compared to last week, feeder calves early week 4.00 to 8.00 higher, yearlings steady and late week steers 2.00 to 4.00 higher, heifers 10.00 to 15.00 lower. Slaughter cows and bulls steady to 2.00 higher.

FEEDER STEERS:
Medium and Large 1

350-400 lbs.	290.00-297.50
400-500 lbs.	270.00-313.00
500-600 lbs.	268.50-291.00
600-700 lbs.	248.00-277.00
700-800 lbs.	223.00-246.00
15 hd 837 lbs.	227.50

FEEDER HEIFERS:
Medium and Large 1

350-400 lbs.	255.00-280.00
400-500 lbs.	244.00-270.00
500-600 lbs.	232.00-258.00
600-700 lbs.	222.50-238.00
700-800 lbs.	212.50-220.50
15 hd 863 lbs.	209.50
Pkg 918 lbs.	186.50

FEEDER HOLSTEIN STEERS
Large 3

Scarce Scarce

SLAUGHTER COWS: Breaking and Boning (70-85% lean) 97.00-114.00, high dressing 108.00-121.00; low dressing 84.00-98.00. Lean (85-90%) 85.00-96.00

SLAUGHTER BULLS: Yield Grade 1-2 1245-2110 lbs. 112.50-127.00; high dressing 127.00-142.00; low dressing 98.00-113.00

BRED COWS: Medium and Large 1 1075-1401 lbs 2nd to 3rd stage 1850.00-2000.00. Medium and Large 1-2 2-8 yrs 1005-1350 lbs 2nd to 3rd stage 1175.00-1750.00, 1st stage 1175.00-1275.00; >8 yrs 1105-1195 lbs 2nd to 3rd stage 1135.00-1350.00 per head

COW & CALF PAIRS: Medium and Large 1 2-8 yrs 1235-1395 lbs some rebred 1st stage with 150 to >300 lb calves 2550.00-280.00; >8 yrs 1300-1322 lbs with 150-300 lb calves 2325.00-2500.00. Medium and Large 1-2 2-8 yrs 975-1310 lbs with 150-300 lb calves 1700.00-2350.00; 2-8 yrs 1100-1375 lbs rebred 1st stage with >300 lb calves 2550.00-2575.00 per pair

WEST CENTRAL MISSOURI WEEKLY SUMMARY

(Kingsville, Windsor, Butler)

Receipts: 3,343 Week ago: 4,665 Year ago: 5,081

Compared to last week, a lighter test of calves and yearlings mostly steady to 5.00 higher. Slaughter cows steady to 3.00 higher.

FEEDER STEERS:
Medium and Large 1

400-500 lbs.	285.00-307.50
500-600 lbs.	268.00-306.00
600-700 lbs.	257.00-282.00
700-800 lbs.	238.00-256.00
19 hd 812 lbs.	242.00

FEEDER HEIFERS:
Medium and Large 1

300-400 lbs.	255.00-280.00
400-500 lbs.	255.00-280.00
500-600 lbs.	233.00-275.00
600-700 lbs.	227.50-260.75
700-750 lbs.	248.50-250.50

SLAUGHTER BULLS: Yield Grade 1-2 1185-2365 lbs 122.00-135.00; high dressing 134.00-144.00; low dressing 110.00-119.00

SLAUGHTER COWS: Breaking and Boning (70-85% lean) 98.00-120.00, high dressing 109.50-129.00 low dressing 93.50-104.50. Lean (85-90%) 86.00-103.00

BRED COWS: Medium and Large 1 5-8 yrs 1217 lbs 3rd stage 1675.00. Medium and Large 1-2 2-8 yrs 1137-1247 lbs 2nd to 3rd stage 1310.00-1750.00 per head

COW & CALF PAIRS: Medium and Large 1-2 5-8 yrs 975-1325 lbs with <150 to 300 lb calves 1610.00-2075.00 per pair

NORTHEAST MISSOURI WEEKLY SUMMARY

(Bowling Green, Kingdom City, Palmyra)

Receipts: 3,266 Week ago: 2,857 Year ago: 2,088

Compared to last week, steer calves under 700 lbs sold steady to 5.00 higher, with steer over 700 lbs selling with a firm to higher undertone. Feeder heifers traded steady to firm. Slaughter cows sold 5.00-10.00 higher

FEEDER STEERS:
Medium and Large 1

400-500 lbs.	304.00-326.00
500-600 lbs.	283.00-322.00
600-700 lbs.	252.25-287.00
700-800 lbs.	238.00-254.00
800-900 lbs.	230.00-244.70

FEEDER HEIFERS:
Medium and Large 1

400-500 lbs.	264.00-285.00
500-600 lbs.	252.00-265.00
600-700 lbs.	240.00-259.00
700-800 lbs.	231.00-240.00

SLAUGHTER BULLS: Yield Grade 1-2 1300-2215 lbs 116.00-136.00; high dressing 131.00-142.50

SLAUGHTER COWS: Breaking and Boning, (70-85% lean) 102.00-123.00; high dressing 113.50-136.00; low dressing 90.00-113.00. Lean (85-90%) 94.00-109.00

SLAUGHTER STEERS: Choice and Prime 2-4 188.00-189.00. Choice 2-3 183.00-187.50

SLAUGHTER HEIFERS: Choice and Prime 2-4 188.00-189.50. Choice 2-3 185.00-188.00

BRED COWS: Scarce

COW/CALF PAIRS: Scarce

NORTH CENTRAL MISSOURI WEEKLY SUMMARY

(Macon, Unionville, Green City, New Cambria)

Receipts: 1,873 Week ago: 1,783 Year ago: 1,513

Compared to the recent sales, steers and heifers unevenly steady. Slaughter cows firm to 5.00 higher.

*Some sale barns on a bi-weekly schedule and may not have a sale each week.

FEEDER STEERS:
Medium and Large 1

450-500 lbs.	285.00-288.00
500-600 lbs.	269.50-292.00
600-650 lbs.	260.50-294.00
700-750 lbs.	248.00-255.00
800-900 lbs.	249.10-251.25

FEEDER HEIFERS:
Medium and Large 1

500-550 lbs.	248.00-259.50
600-650 lbs.	247.50-249.50
12 hd 714 lbs.	229.00

SLAUGHTER BULLS: Yield Grade 1-2 1300-2090 lbs 119.50-139.00; high dressing 135.00-151.00

SLAUGHTER COWS: Breaking and Boning, (70-85% lean) 100.50-118.00, high dressing 112.50-138.00. Lean (85-90%) 88.00-101.00

BRED COWS: Medium and Large 1 2-8 yrs 1262-1519 lbs 2nd to 3rd stage 1675.00-1950.00. Medium and Large 1-2 2-8 yrs 1278-1470 lbs 1st to 3rd stage 1500.00-2000.00 per head

COW & CALF PAIRS: Medium and Large 1 2-8 yrs 1100-1450 lbs some rebred 1st to 2nd stage with 150 to >300 lb calves 2200.00-2350.00. Medium and Large 1-2 2-8 yrs 1100-1350 lbs some rebred 1st stage with 150-300 lb calves 1800.00-2125.00 per pair

SOUTHEAST MISSOURI WEEKLY SUMMARY

(Jackson and Farmington)

Receipts: 1,150 Week ago: 1,894 Year ago: 966

Compared to last week, steers and heifers very uneven from 4.00 lower to 12.00 higher. Slaughter cows and bulls 2.00 higher.

FEEDER STEERS:
Medium and Large 1

300-400 lbs. 260.00-297.50
400-500 lbs. 245.00-287.00
500-600 lbs. 253.00-280.00
600-700 lbs. 225.00-245.00
700-750 lbs. 200.00-242.00
Few 800-850 lbs. 212.00-217.00

FEEDER HEIFERS:
Medium and Large 1

300-400 lbs. 230.00-255.00
400-500 lbs. 220.00-252.00
500-600 lbs. 202.00-260.00
600-700 lbs. 200.00-239.00
800-850 lbs. 180.00-214.00

SLAUGHTER BULLS: Yield
Grade 1-2 1000-2065 lbs. 108.00-110.00; high dressing 115.00-133.00

SLAUGHTER COWS: Breaking and Boning (75-85% lean) 87.00-106.00; high dressing 100.00-116.00. Lean (85-90% lean) 65.00-88.00

BRED COWS: Medium and Large 2
2-8 yrs 1040-1430 lbs 2nd to 3rd stage 1250.00-1700.00 per head

COW & CALF PAIRS: Scarce

EAST CENTRAL MISSOURI WEEKLY SUMMARY

(Cuba, Vienna)

Receipts: 732 Week ago: 1,810 Year ago: 2,860

Compared to last week, steers steady to firm and heifers near steady, on comparable sales. Slaughter cows 3.00 to 4.00 higher.

FEEDER STEERS:
Medium and Large 1

300-350 lbs. 302.50-315.00
400-500 lbs. 290.00-312.00
500-600 lbs. 270.00-301.00
Pkg 650 lbs. 285.00
Pkg 771 lbs. 244.50
918 lbs. 212.00-214.00

FEEDER HEIFERS:
Medium and Large 1

Pkg 381 lbs. 244.00
Pkg 452 lbs. 275.00
600-700 lbs. 233.00-240.00
Few 700-750 lbs. 218.00-220.00
800-850 lbs. 208.00-214.00

SLAUGHTER BULLS: Yield
Grade 1-2 1180-1800 lbs 123.00-128.00

SLAUGHTER COWS: Breaking and Boning, (70-85% lean) 105.00-113.00; high dressing 114.00-126.00; low dressing 95.00-101.00. Lean (85-90%) 93.00-103.00

BRED COWS: Medium and Large 1
5-8 yrs 1201-1420 lbs 2nd to 3rd stage 1500.00-2000.00 per head. Medium and Large 1-2
2-8 yrs 1068-1443 lbs 1st to 3rd stage 1285.00-1625.00 per head

COW & CALF PAIRS: Scarce

NORTHWEST MISSOURI WEEKLY SUMMARY

(Tina)

Receipts: 1,961 Week ago: 2,185 Year Ago: 1,106

Compared to two weeks ago, feeders steady to 5.00 higher, several spots 10.00 higher on weaned, vaccinated steer calves. Yearling steers over 800 lbs sharply higher undertones. Slaughter cows steady to 3.00 higher.

FEEDER STEERS:
Medium and Large 1

400-500 lbs. 303.00-326.00
500-600 lbs. 284.50-314.00
600-700 lbs. 265.00-290.50
700-750 lbs. 247.00-253.00
800-900 lbs. 243.50-255.25
48 hd 942 lbs. 240.25

FEEDER HEIFERS:
Medium and Large 1

400-500 lbs. 261.50-274.00
500-600 lbs. 259.00-274.00
600-700 lbs. 244.00-254.00
16 hd 736 lbs. 245.75

SLAUGHTER BULLS: Yield
Grade 1-2 1020-1970 lbs 121.00-132.00; high dressing 132.00-134.00; low dressing 91.00-118.00

SLAUGHTER COWS: Breaking and Boning, (70-85% lean) 98.50-113.00; high dressing 105.00-127.50. Lean (85-90%) 91.00-100.00

BRED COWS: Medium and Large 1-2
2-8 yrs 1040-1445 lbs 2nd to 3rd stage 1300.00-1610.00 per head

COW & CALF PAIRS: Medium and Large 1-2
3 pairs 2-8 yrs 1300 lbs with 150-300 lb calves 1900.00 per pair

AFTERNOON NATIONAL SLAUGHTER CATTLE REVIEW

So far for Friday in the Texas Panhandle negotiated cash trading has been at a standstill. In Kansas and Nebraska negotiated cash trading has been inactive with very light demand. In the Western Cornbelt negotiated cash trading has been slow on light to moderate demand. A few Live FOB purchases traded from 185.00-186.00. However, not enough purchases for a full market trend. The latest established market in all regions was last week. In the Southern Plains Live FOB purchases traded at 180.00. In Nebraska and Western Cornbelt Live FOB and Dressed Delivered purchases traded at 188.00 and at 295.00, respectively.

Negotiated Cash Sales:

Confirmed:	9,578	Week Ago:	26,214	Year Ago:	4,525
Week to date:	18,968	Week Ago:	73,021	Year Ago:	72,239

<u>Live Basis</u>	<u>Steers</u>	<u>Heifers</u>
Over 80% Choice	185.00-188.00, avg 186.08	178.00-188.00, avg 185.05
65-80% Choice	186.00	-
35-65% Choice	-	-
0-35% Choice	-	-
Total All Grades	185.00-188.00, avg 186.08	178.00-188.00, avg 185.05
Dressed Basis		
Over 80% Choice	292.00-295.00, avg 292.83	292.00-295.00, avg 294.61
65-80% Choice	292.00	-
35-65% Choice	291.00	-
0-35% Choice	-	-
Total All Grades	291.00-295.00, avg 292.36	292.00-295.00, avg 294.61

<u>All Beef Type Steers/Heifers</u>	<u>Head</u>	<u>Avg Wt</u>	<u>Price Range</u>	<u>Wtd Avg</u>
Live FOB	5,872	1,379.1	178.00-188.00	185.66
Live Del	544	1,367.9	186.00-189.00	187.62
Dressed Del	2,898	900.3	291.00-295.00	294.08
Dressed FOB	182	950.7	290.00-300.00	294.16

WEEKLY COMMODITY FUTURES TRENDS

Compared to last week, Live Cattle 0.15 to 2.30 lower, Lean Hogs 0.15 to 2.53 higher, except Feb 0.05 lower, Feeder Cattle Aug and Sep 0.30 to 0.32 lower, others steady to 0.85 higher.

Daily Futures Closes

	Mon.	Tues.	Wed.	Thu.	Fri.
Cattle					
Aug	178.75	178.30	178.67	178.05	178.15
Oct	180.30	179.60	179.95	179.50	179.60
Dec	184.32	183.30	183.55	183.40	183.60
Feb	188.65	187.45	187.30	187.37	187.62
Apr	191.40	190.25	190.02	190.22	190.37
Lean Hogs					
Aug	100.10	101.65	101.65	102.02	103.20
Oct	82.65	84.37	83.62	83.25	85.02
Dec	75.70	77.00	76.37	75.80	77.05
Feb	80.20	81.20	80.72	80.05	80.87
Apr	84.82	85.55	85.17	84.65	85.30
Fdr Cat					
Aug	243.25	243.22	244.20	244.65	245.60
Sep	246.62	246.35	247.45	248.27	248.97
Oct	248.67	248.40	249.45	250.35	251.00
Nov	249.45	249.42	250.22	251.07	251.87
Jan	248.37	248.37	249.30	249.50	250.25
Milk					
Jul	13.77	13.78	13.78	13.80	13.81
Aug	17.46	17.37	17.02	16.98	17.26
Sep	18.42	17.93	17.58	17.35	17.70

WEEKLY COMMODITY GRAIN FUTURES TRENDS

Compared to last week, Soybeans 0.15 to 0.19 lower, except Sep 0.04 higher, Wheat 0.07 to 0.15 higher, Corn 0.06 lower, KC Wheat Sep 0.04 lower, others 0.03 to 0.13 higher, Soybean Meal 0.10 to 12.40 higher, except Oct and Jan 2.70 lower.

Daily Grain Futures Closes

	Mon.	Tues.	Wed.	Thu.	Fri.
Soybeans					
Aug	1523 1/4	1515 1/2	1546 1/4	1532	1486 3/4
Sep	1453 1/4	1450 1/2	1468 1/2	1453 1/2	1433
Nov	1424 1/2	1420	1420	1398	1382 1/2
Jan	1430 1/2	1425 1/4	1425	1404 1/4	1389 3/4
Mar	1418 3/4	1414	1413 1/4	1396 1/4	1382 1/4
Wheat					
Sep	757 1/2	760 1/4	720	712 3/4	704 1/4
Dec	777 1/2	780 3/4	742 1/4	735 1/2	728
Mar	792	796 1/2	759 1/2	754 1/4	747 3/4
May	794 3/4	797 3/4	764	761 1/4	755 3/4
Jul	786 3/4	788 1/4	760 3/4	758 3/4	754 1/2
Corn					
Sep	560 1/2	557 1/2	540 1/4	533 1/4	521
Dec	568 1/4	565 1/4	548 1/4	542 1/4	530 1/4
Mar	578 1/4	575 1/2	559	553 3/4	541 3/4
May	583 1/4	580 1/2	565 1/4	560	548 1/4
Jul	583 1/2	580 3/4	567	562 1/4	550 1/2
KC Wheat					
Sep	918 1/2	912 3/4	865 1/4	866 1/2	856 1/4
Dec	925 1/4	920 3/4	877 1/4	878	869 1/4
Mar	918 1/2	917 3/4	876 1/2	876 1/2	868 1/2
May	908 1/2	908 3/4	870 1/4	869 3/4	862 3/4
Jul	865	869 1/4	837 3/4	838 1/4	832 1/2
SB Meal					
Aug	447.30	453.80	464.70	464.50	455.20
Sep	430.40	436.30	444.60	443.00	433.60
Oct	414.90	419.90	423.90	420.90	411.60
Dec	411.60	416.10	418.60	415.60	405.80
Jan	406.80	410.50	412.80	410.50	401.00

MISSOURI GRAIN WEEKLY TRENDS

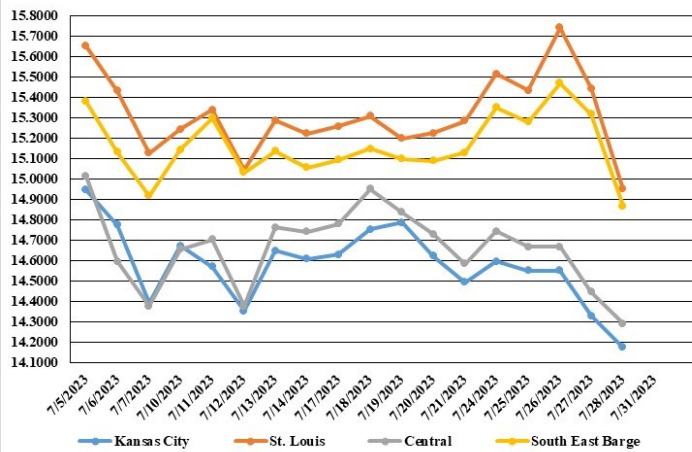
Compared to last week, Soybeans 0.19 to 0.45 lower, Wheat 0.13 lower to 0.01 higher, Corn 0.01 to 0.28 lower, Sorghum no trend due to lack of bids.

Area	#1 Soybeans	#2 Soft Wheat	#2 Corn	#2 Grain Sorghum
Kansas City				
Friday**	14.42-14.57	6.98	5.92	5.62
Monday	14.55-14.65	7.48	6.26-6.41	5.96
Tuesday	14.50-14.60	7.45	6.23-6.28	5.93
Wednesday	14.50-14.60	7.05	6.05-6.10	5.75
Thursday	14.28-14.38	6.98	5.98-6.03	5.68
Friday	14.13-14.23	6.84	5.86-5.91	5.56
St. Louis				
Friday**	15.26-15.31	6.46-6.48	5.89-5.92	7.02
Monday	15.50-15.53	6.98-7.10	6.24-6.36	7.36
Tuesday	15.42-15.46	7.00-7.02	6.28-6.38	7.33
Wednesday	15.72-15.76	6.60-6.63	6.10-6.20	7.15
Thursday	15.42-15.47	6.51-6.58	5.98-6.03	7.08
Friday	14.94-14.97	6.42-6.49	5.61-5.91	---
Central				
Friday**	14.57-14.62	6.63-6.73	5.82-5.87	---
Monday	14.70-14.80	7.08-7.33	6.11-6.16	---
Tuesday	14.60-14.70	7.10-7.20	6.03-6.13	---
Wednesday	14.60-14.70	6.70-6.80	5.85-5.95	---
Thursday	14.38-14.48	6.63-6.73	5.78-5.88	---
Friday	14.23-14.33	6.54-6.64	5.66-5.76	---
S.E. MO				
Friday**	15.05-15.21	6.31-6.58	5.50-5.67	---
Monday	15.27-15.43	6.88-7.08	6.84-6.01	---
Tuesday	15.21-15.36	6.90-6.97	5.82-5.98	---
Wednesday	15.46-15.48	6.50-6.57	5.64-5.80	---
Thursday	15.32	6.43-6.50	5.73	---
Friday	14.87	6.33-6.41	5.31	---

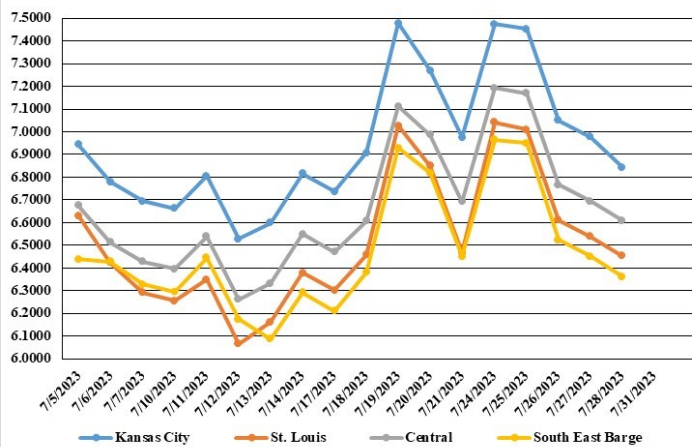
(PRICES PER BUSHEL) *NEW CROP **PREVIOUS WEEK'S PRICES
*Bids calculated using Kansas City, St. Louis, and St. Joseph bids

MONTHLY GRAIN CROP

July 2023 Soybean Bids



July 2023 Wheat Bids



July 2023 Corn Bids



*Axis value ranges may be updated to reflect data points.

WHOLESALE FEEDSTUFFS PRICES (DOLLARS PER TON-BULK BASIS)

Area	Soybean Hulls Pellets	Soybean Meal 46.5-48%	Corn Gluten Pellets 21%	Wheat Middlings
Kansas City	222.50	462.70	240.00	174.33
St. Louis	n/a	n/a	237.50	170.00

COLD STORAGE

Total natural cheese stocks in refrigerated warehouses on June 30, 2023 were up 1 percent from the previous month and up slightly from June 30, 2022.

Butter stocks were down 6 percent from last month but up 5 percent from a year ago.

Total frozen poultry supplies on June 30, 2023 were up 5 percent from the previous month and up 10 percent from a year ago. Total stocks of chicken were up 3 percent from the previous month and up 11 percent from last year. Total pounds of turkey in freezers were up 9 percent from last month and up 6 percent from June 30, 2022.

Total frozen fruit stocks were up 2 percent from last month and up 3 percent from a year ago.

Total frozen vegetable stocks were down 1 percent from last month but up 5 percent from a year ago.

Total red meat supplies in freezers were down 6 percent from the previous month and down 14 percent from last year. Total pounds of beef in freezers were down 3 percent from the previous month and down 20 percent from last year. Frozen pork supplies were down 8 percent from the previous month and down 9 percent from last year. Stocks of pork bellies were down 14 percent from last month but up 33 percent from last year.

MISSOURI CROP PROGRESS AND CONDITION 07/24/23

	Week Ending			2018-2022 Average
	07/23/23	07/16/23	07/23/22	
Corn silking	90	81	80	80
Corn dough	39	21	32	32
Soybeans Blooming	68	56	47	50
Soybeans setting pods	31	19	16	19
Alfalfa hay 2nd cutting	91	84	89	85
Alfalfa hay 3rd cutting	20	12	7	15
Other hay cut	93	92	93	93

MISSOURI WEEKLY HAY SUMMARY 07/27/23

An ever so slight improvement was noted in the latest drought monitor. Extreme heat and wind is making moisture disappear about as fast as it is received currently. A bit more hay showing up in the market this week but not lasting long before it is snatched up. Several guys out baling any bit of regrowth they may have or other areas that typically may not be baled in a normal year. Much of this hay is lower quality, with a fair amount of undesirable weeds and such mixed in with grass. There has also been some reports of corn chopping going on in some areas. Hay demand is good to very good. The supply is light. Hay prices are steady to firm. The Missouri Department of Agriculture has a hay directory visit <http://mda.mo.gov/abd/haydirectory/> for listings of hay <http://agebb.missouri.edu/haylst/>

Alfalfa - Supreme 250.00-300.00, small square 10.00-15.00 per bale
Alfalfa - Premium 200.00-250.00
Alfalfa - Good 150.00-200.00, small square 5.00-10.00 per bale
Alfalfa - Fair 125.00-150.00
Alfalfa/grass mix - Good/Premium small square 5.00-10.00 per bale
Mixed grass - Good/Premium 150.00-225.00
Mixed grass - Fair/Good 100.00-175.00, small square 5.00-8.00 per bale
Mixed grass - Fair 60.00-125.00 per large round bale
Wheat straw - 4.00-7.00 per small square bale

Please Note: The above volumes (tonnage, acres, and bales) listed are for confirmed trades only, it does not include estimated volume (tonnage) for bids or offers to the trade. List your hay for sale at: [Hay Listing Online Form](#). Explanation of Hay Quality Guidelines: [Hay Quality Designation Guidelines](#). Glossary of Terms: [Livestock, Poultry, & Grain Hay Terms](#)

MISSOURI WEEKLY SHEEP/GOAT AUCTION SUMMARY

Receipts: 868 Week Ago: 3,940 Last Year: 868
SHEEP: Feeder lambs Medium and Large 1-2 30 hd 49 lbs 158.00. Small and Medium 1-2 pkg 24 lbs 147.00; pkg 37 lbs 120.00. Small and Medium 1-2 hair 20-40 lbs 150.00-180.00, thin 127.50-132.50; 40-50 lbs 173.00-192.00, fancy 205.00.

Slaughter lambs Choice and Prime 1-3 w/s pkg 85 lbs 130.00. Choice and Prime 1-3 hair 50-60 lbs 156.00-188.00, fancy 207.00; 70-80 lbs 148.00-162.00; pkg 88 lbs 170.00; pkg 93 lbs 133.00. Choice 1-3 hair 55-70 lbs 142.00-148.00; 70-100 lbs 125.00-135.00. Good 1-2 pkg 61 lbs 125.00. Slaughter ewes Utility and Good 1-3 pkg 75 lbs 102.00. Cull and Utility 1-2 pkg 65 lbs 61.00; pkg 88 lbs 50.00. Good 2-3 hair pkg 132 lbs 105.00. Utility and Good 1-3 hair 87 lbs 91.00-92.00; 90-115 lbs 66.00-81.00. Cull and Utility 1-2 55-155 lbs 45.00-65.00. Slaughter bucks 1-2 pkg 138 lbs 40.00. Bucks 1-2 hair pkg 153 lbs 99.00.

GOATS: Feeder kids Selection 1 30-50 lbs 260.00-290.00. Selection 2 25-35 lbs 225.00-252.00; 40-50 lbs 192.00-237.50. Selection 3 pkg 23 lbs pygmies 100.00; 30-40 lbs 152.50-165.00, pygmies 80.00-97.50; pkg 43 lbs 138.00. Wether kids Selection 2 pkg 47 lbs 242.00.

Slaughter kids Selection 1 50-60 lbs 267.00-300.00, fancy 317.00; 60 lbs 250.00-252.50. Selection 2 50-60 lbs 210.00-242.50, pygmies 195.00. Selection 3 pkg 68 lbs 145.00. Slaughter nannies/does Selection 1-2 pkg 61 lbs 127.00; pkg 78 lbs 100.00; 12 hd 85 lbs 85.00, thin 72.00; pkg 90 lbs 95.00, thin 65.00; 100-135 lbs 90.00-142.00, thin 70.00. Slaughter bucks/billies Selection 1-2 pkg 75 lbs 202.50; pkg 93 lbs 90.00; pkg 90 lbs pygmies 145.00. Wether Selection 1-2 pkg 73 lbs 215.00.

Replacement nannies/does Selection 1-2 pkg 1-2 yrs 65 lbs exp 182.00; 88 lbs exp 200.00.

Explanatory Notes: Stage - Represents estimated lambing/kidding period (Open, Exp=exposed, Bred, Fall = Sep-Nov, Win = Dec-Feb, Spr = Mar-May, Sum=Jun-Aug; w/s = woolled and shorn; /hd= per head; /fam=per family
All price CWT unless otherwise noted.

MISSOURI DROUGHT MONITOR

Date	None	D0	D1	D2	D3	D4
07/27/23	5.07	16.55	31.71	26.44	20.23	0
07/18/23	4.66	16.39	27.82	27.95	21.03	2.15
07/26/22	34.25	15.45	14.66	17.40	18.24	0

Reflects percentage of Missouri impacted by drought. D0 Abnormally Dry; D1 Moderate Drought; D2 Severe Drought; D3 Extreme Drought; D4 Exceptional Drought

NATIONAL DIRECT DELIVERED FEEDER PIG REPORT

07/28/23 Receipts: 109,088 Week ago: 81,948 Year Ago: 75,478
Early weaned pigs 2.00 lower. Feeder pigs 1.00 lower.
Early weaned pigs 10-12 lbs. basis: Cash 69,000 head 3.50-18.00, weighted average 9.75.
Formula 26,113 head 12.97-50.18, weighted average 35.71.
Feeder pigs 40 pounds basis: Cash 13,975 head 20.00-45.00, weighted average 35.96.

NATIONAL DAILY DIRECT PRIOR DAY HOG REPORTS FOR 07/28/23

BARROWS AND GILTS (Carcass Basis): 1,320 head
Base Carcass Price 95.00-108.00, weighted average 103.11

SOWS (Live Basis): 6,977 head
300-500 lbs. 21.00-60.25
Over 500 lbs. 41.00-62.25

MISSOURI WEEKLY DIRECT SLAUGHTER CATTLE REPORT 07/28/23

Weekly Receipts: 160 Week ago: 440 Year ago: 280
Trade as of Friday morning: light this week with flat dressed sales 2.00 lower and grid dressed sales inactive.

LIVE STEERS & HEIFERS: No sales reported
DRESSED STEERS & HEIFERS: 4 loads flat 292.00

GRADE AND WEIGHT (Grid): No sales reported

Click here for the current [National Crop Progress](#)
Click here for the current [Missouri Crop Progress](#)
The current hay directory can be found at: [Hay Directory](#).