

Weekly Market Summary

Published by:
Missouri Department of Agriculture
Ag Business Development Division
Market News Program



Chris Chinn, Director
 Jill Wood, Division Director
 Tony Hancock, Editor
<http://www.ams.usda.gov/marketnews.htm>
<http://www.ams.usda.gov/marketnews.htm>

Michael L. Parson, Governor

Volume XLIII, Number 32 ♦ P.O. Box 630, Jefferson City, MO 65102 ♦ (573) 751-4211 ♦ Monday, Aug 28, 2023

MISSOURI WEEKLY FEEDER CATTLE WEIGHTED AVERAGE REPORT

Receipts: 7,986 Week ago: 16,623 Year ago: 19,199
 Steers and Heifers Medium and Large 1—Weighted average weights and prices

STEERS: Medium and Large 1

275 lbs. 277.39	489 lbs. 296.32	673 lbs. 253.27	862 lbs. 240.27
317 lbs. 332.05	525 lbs. 294.60	728 lbs. 254.17	911 lbs. 231.09
378 lbs. 305.65	558 lbs. 281.11	760 lbs. 250.89	
421 lbs. 293.02	620 lbs. 270.38	823 lbs. 245.63	

HEIFERS: Medium and Large 1

335 lbs. 266.54	524 lbs. 255.19	721 lbs. 244.29
381 lbs. 267.66	581 lbs. 243.85	782 lbs. 226.00
431 lbs. 251.69	627 lbs. 248.25	
481 lbs. 252.72	666 lbs. 250.82	

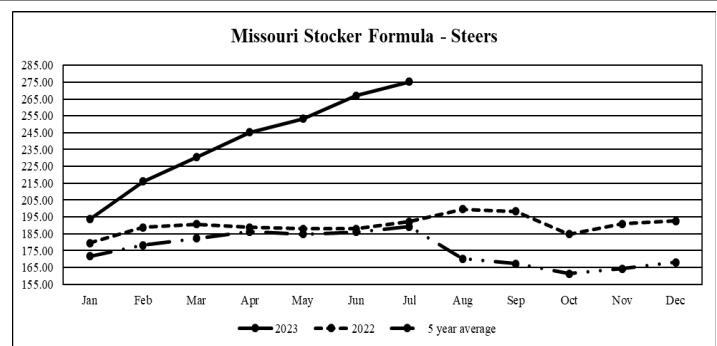
MISSOURI STEER (HEIFER) STOCKER FORMULA 08/28/2023

Monday's Missouri Stocker formula consists of **1147 (1461)** head with a weighted average weight of **556.03 (546.43)** lbs. and a price value of **272.87(246.73)**, 13.32 lower (8.69 lower) than last week.

This a rolling seven day calculated weighted value which combines all Feeder Steers reported by MDA/USDA Market News Service weighing from 400-649 lbs. in the Medium and Large 1 and Medium and Large 1-2 frame and muscle classifications, including all comment cattle except Brahman X. Heifer values are in parentheses.

MISSOURI WEEKLY CATTLE AUCTION SUMMARY

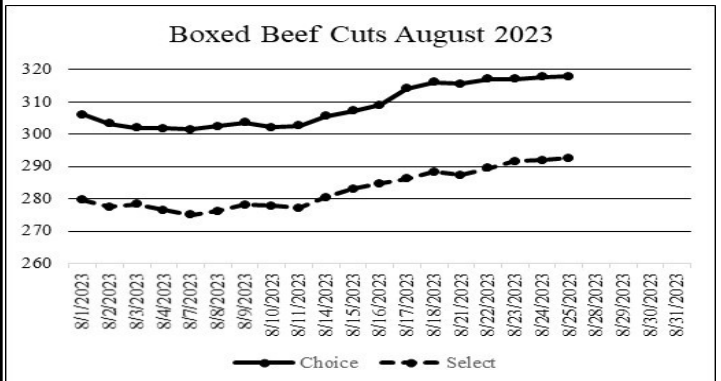
Compared to last week, a very limited test of feeders sold with lower undertones. The supply of feeders was light. Record setting extreme heat make transporting cattle quite dangerous and several barns canceled sales while most others encouraged producers to postpone marketing if possible. Demand was light as taking delivery of new cattle is also a difficult and risky endeavor with triple digit heat. Several producers did take advantage of the sunshine and went back to the hay fields this week as the rains from the previous few weeks improved conditions. Much to the surprise of many grass responded much quicker than expected. Given the low inventories of hay and uncertainty of what September might bring few were willing to risk the chance of watching grass that could be baled now burning up if rains don't continue. Although the offering was light this week there was several pot loads that sold around the state, most however sold several dollars lower than the last few weeks. General consensus is that most of the lower markets were strictly heat related as fundamentals are still very supportive of the market. Joplin Regional Stockyards sold five loads of 900-940 lb. steers from 230.75-233.00 which was probably the closest thing to steady all week. Interstate Regional Stockyards sold two loads of 740 lb. steers at 260.00 and Tina Livestock Market had a load of 813 lb. steers which sold for 250.00. Boxed beef cutouts were higher for the week. Choice closed at 317.90, up 1.79 and select closed at 292.67, up 4.31 compared to last Friday. Negotiated feedlot sales as of the Friday afternoon was just over 61K head reported. Live sales were reported from 178.00-186.00 and dressed sales were reported from 292.00-295.00. Missouri Stocker formula consists of 1147 head with a weighted average weight of 556.03 lbs. and a price value of 272.87, 13.32 lower than a week ago. The steer/heifer spread is 26.14.



*Graph is updated the first Monday of each month. Axis value ranges may be updated to reflect data points.

NATIONAL BOXED BEEF CUTOUT/BOXED BEEF CUTS

<u>DATE</u>	<u>CHOICE</u>	<u>SELECT</u>	<u>TOTAL LOADS</u>
08/21	315.56	287.33	64
08/22	317.05	289.51	96
08/23	317.05	291.59	109
08/24	317.63	291.91	102
08/25	317.90	292.67	79
5 Day Simple Average	317.04	290.60	



*Axis value ranges may be updated to reflect data points.

WEEKLY LIVESTOCK SLAUGHTER 08/26/23

	<u>CATTLE</u>	<u>HOGS</u>	<u>SHEEP</u>
Week to Date:	626,000	2,500,000	32,000
Last Week:	616,000	2,414,000	32,000
Last Year:	678,000	2,412,000	34,000

The Weekly Market Summary, as well as historical summaries, are available on our website <https://agmarketnews.mo.gov/summaries>
 Market News Hotline: 1-573-522-9244

SOUTHWEST MISSOURI WEEKLY SUMMARY

(Joplin and Springfield)

Receipts: 4,296 Week ago: 8,069 Year ago: 7,018

Compared to last week, steers under 625 lbs 6.00 to 8.00 lower, heifers under 625 lbs 8.00 to 10.00 lower, heavier weights steady to 2.00 lower. Slaughter cows and bulls 4.00 to 6.00 lower.

FEEDER STEERS:
Medium and Large 1

400-500 lbs.	290.00-302.00
500-600 lbs.	276.00-294.00
600-650 lbs.	262.00-276.00
700-800 lbs.	249.00-259.00
800-900 lbs.	240.00-242.00
900-950 lbs.	221.00-233.00

FEEDER HEIFERS:
Medium and Large 1

300-350 lbs.	269.00-275.00
400-500 lbs.	250.00-267.50
500-600 lbs.	243.00-259.00
600-700 lbs.	239.00-247.00
700-800 lbs.	226.00-252.00

FEEDER HOLSTEIN STEERS
Large 3

300-400 lbs.	161.00-164.00
400-500 lbs.	155.00-181.00
500-600 lbs.	149.00-175.00
600-700 lbs.	149.00-172.00

SLAUGHTER COWS: Breaking and Boning (70-85% lean) 97.50-116.00, high dressing 109.00-129.00; low dressing 76.00-101.50. Lean (85-90%) 87.50-104.00

SLAUGHTER BULLS: Yield Grade 1-2 1215-2150 lbs. 112.00-127.00; high dressing 126.00-142.00; low dressing 104.00-110.00

BRED COWS: Medium and Large 1-2 2-8 yrs 850-1280 lbs 2nd to 2rd stage 1350.00-2050.00 per head. Medium and Large 2 2-8 yrs few 1022 lbs 2nd to 3rd stage 1625.00 per head

COW & CALF PAIRS: Medium and Large 1-2 2-8 yrs 1010 lbs with 150-300 lb calves 1925.00 per pair. Medium and Large 2 3 pairs 2-8 yrs 875 lbs with <150 lb calves 1550.00 per pair.

SOUTH CENTRAL MISSOURI WEEKLY SUMMARY

(West Plains, Phillipsburg)

Receipts: 1,122 Week ago: 5,189 Year Ago: 3,228

Too few feeders for an adequate market comparison, but undertones were steady to weak. Slaughter cows and bulls mostly steady.

FEEDER STEERS:
Medium and Large 1

300-400 lbs.	309.00-327.50
400-500 lbs.	292.50-297.50

FEEDER HEIFERS:
Medium and Large 1 & 1-2

300-400 lbs.	250.00-270.00
400-500 lbs.	235.00-257.50
500-600 lbs.	225.00-250.00
600-650 lbs.	223.00-235.00
700-750 lbs.	206.00-214.00
22 hd 886 lbs.	180.00

FEEDER HOLSTEIN STEERS
Large 3

Scarce Scarce

SLAUGHTER COWS: Breaking and Boning (70-85% lean) 102.00-112.00, high dressing 111.50-118.00; low dressing 87.50-102.50. Lean (85-90%) 81.50-104.00

SLAUGHTER BULLS: Yield Grade 1-2 1090-1930 lbs. 110.00-125.00; high dressing 130.00-132.50; low dressing few 115.00.

BRED COWS: Medium and Large 1-2 2-8 yrs 1050-1425 lbs 2nd to 3rd stage 1250.00-1900.00 per head. Medium and Large 2 2-8 yrs 780-1180 lbs 1st to 3rd stage 750.00-1225.00 per head.

COW & CALF PAIRS: Medium and Large 1-2 couple 2-8 yrs 1250 lbs with 150-300 lb calves 1825.00 per pair

WEST CENTRAL MISSOURI WEEKLY SUMMARY

(Kingsville, Windsor, Butler)

Receipts: 826 Week ago: 2,150 Year ago: 3,394

Compared to last week, mainly loads of yearlings sold steady to 3.00 lower, a few groups of calves steady to lower undertone with few comparisons available. Slaughter cows mostly steady.

FEEDER STEERS:
Medium and Large 1

Pkg 425 lbs.	332.50
Pkg 508 lbs.	285.00
Pkg 554 lbs.	250.00
69 hd 744 lbs.	256.75
58 hd 834 lbs.	244.00

FEEDER HEIFERS:
Medium and Large 1

400-500 lbs.	250.00-270.00
500-600 lbs.	250.00-251.00
600-700 lbs.	234.00-256.75

SLAUGHTER BULLS: Yield Grade 1-2 1315-1650 lbs 119.00-129.50

SLAUGHTER COWS: Breaking and Boning (70-85% lean) 103.50-119.00, high dressing 111.00-124.00 low dressing 99.00-102.00 Lean (85-90%) 94.00-101.00

BRED COWS: Scarce

COW & CALF PAIRS: Scarce

NORTHEAST MISSOURI WEEKLY SUMMARY

(Bowling Green, Kingdom City, Palmyra)

Receipts: 721 Week ago: 3,333 Year ago: 4,064

Compared to last week, a very light offering with only a few packages of 500# steers and heifers near steady and a pot of 920 lb steers firm undertone, all other weights lightly tested. Slaughter cows mostly 2.00 to 5.00 lower on a light test.

FEEDER STEERS:
Medium and Large 1

pkg 493 lbs.	312.00
500-600 lbs.	295.00-309.00
600-650 lbs.	275.00-285.00
57 hd 919 lbs.	230.50

FEEDER HEIFERS:
Medium and Large 1

350-400 lbs.	302.50-312.50
500-550 lbs.	270.00-277.00

SLAUGHTER BULLS: Yield Grade 1-2 1480-1975 lbs 119.50-132.00; high dressing 135.00-138.00

SLAUGHTER COWS: Breaking and Boning, (70-85% lean) 104.00-118.00; high dressing 114.00-123.00; low dressing 95.00-102.50. Lean (85-90%) 92.00-99.00

SLAUGHTER STEERS: Scarce

SLAUGHTER HEIFERS: Scarce

BRED COWS: Scarce

COW/CALF PAIRS: Scarce

NORTH CENTRAL MISSOURI WEEKLY SUMMARY

(Macon, Unionville, Green City, New Cambria) (w/e 08/18/2023)

Receipts: 1,081 Week ago: 2,447 Year ago: 1,210

Compared to two weeks ago feeder sold firm to 10.00 higher. Slaughter cows sold steady.

*Some sale barns on a bi-weekly schedule and may not have a sale each week.

FEEDER STEERS:
Medium and Large 1

400-500 lbs.	319.00-350.00
500-600 lbs.	290.00-312.50
600-700 lbs.	293.00-300.00
Load 722 lbs.	287.00
800-900 lbs.	258.50-261.00

FEEDER HEIFERS:
Medium and Large 1

400-500 lbs.	290.00-314.50
500-600 lbs.	273.00-292.25
600-700 lbs.	255.25-270.75
700-800 lbs.	232.00-257.50

SLAUGHTER BULLS: Yield Grade 1-2 1600-2150 lbs 135.00; high dressing 146.00-155.00

SLAUGHTER COWS: Breaking and Boning, (70-85% lean) 106.50-120.50, high dressing 116.50-138.50. Lean (85-90%) 95.00-104.50

BRED COWS: Scarce

COW & CALF PAIRS: Scarce

SOUTHEAST MISSOURI WEEKLY SUMMARY

(Jackson and Farmington)

Receipts: 341 Week ago: 1,234 Year ago: 1,451

Too few comparisons for a market trend.

FEEDER STEERS:
Medium and Large 1

300-400 lbs. 275.00-316.00
400-500 lbs. 265.00-294.00
500-600 lbs. 254.00-294.00
650-700 lbs. 237.00-248.00

FEEDER HEIFERS:
Medium and Large 1

300-400 lbs. 225.00-250.00
400-500 lbs. 227.00-241.00
500-600 lbs. 220.00-246.00
Pkg 620 lbs. 225.00

SLAUGHTER BULLS: Yield Grade 1-2 1270-1590 lbs. ind 98.00; high dressing couple 118.00-120.00; ind low dressing 85.00

SLAUGHTER COWS: Breaking and Boning (75-85% lean) 70.00-100.00; high dressing 103.00-111.00. Lean (85-90% lean) 70.00-88.00

BRED COWS: Scarce

COW & CALF PAIRS: Scarce

EAST CENTRAL MISSOURI WEEKLY SUMMARY

(Cuba, Vienna)

Receipts: 1,274 Week ago: 1,002 Year ago: 1,632

Compared to last week, steers and heifers under 650 lbs. 3.00 to 6.00 lower, no recent price comparisons on heavier weights. Slaughter cows 2.00 to 4.00 lower. (VA—Value Added)

FEEDER STEERS:
Medium and Large 1

550-600 lbs. VA 278.00-283.00
600-700 lbs. 259.00-270.00
600-700 lbs. VA 253.00-280.00
700-800 lbs. 246.50-256.00
Lot 825 lbs. VA 235.50

FEEDER HEIFERS:
Medium and Large 1

500-600 lbs. 245.00-261.00
600-700 lbs. 232.00-248.00
600-700 lbs. VA 246.00-255.00
700-800 lbs. VA 232.50-234.00

SLAUGHTER BULLS: Yield Grade 1-2 couple low dressing 1250-1875 lbs 90.00-106.00

SLAUGHTER COWS: Breaking and Boning, (70-85% lean) 99.00-105.00; high dressing few 109.00-111.00. Lean (85-90%) 90.00-99.50

BRED COWS: Scarce

COW & CALF PAIRS: Scarce

NORTHWEST MISSOURI WEEKLY SUMMARY

(Tina)

Receipts: 1,352 Two Weeks Ago: 762 Year Ago: 1,303

Compared to two weeks ago, feeders steady to 5.00 higher. Slaughter cows and bulls steady to 5.00 lower.

FEEDER STEERS:
Medium and Large 1

Pkh 485 lbs. 317.50
500-600 lbs. 299.00-308.50
600-650 lbs. 291.00-292.50
750-800 lbs. 254.00-262.00
66 hd 813 lbs. 250.00

FEEDER HEIFERS:
Medium and Large 1

10 hd 530 lbs. 263.00
22 hd 607 lbs. 267.50
77 hd 730 lbs. 249.75

SLAUGHTER BULLS: Yield Grade 1-2 1380-2065 lbs few 127.00-135.50; low dressing few 107.50-110.00

SLAUGHTER COWS: Breaking and Boning, (70-85% lean) 103.00-119.50; high dressing 112.00-125.50. Lean (85-90%) 91.00-106.00

BRED COWS: Medium and Large 1-2 2-4 yrs 1134-1329 lbs 3rd stage 2600.00, 2nd stage 1750.00; 2-8 yrs 1042-1122 lbs 1st stage 1200.00-1650.00; 2nd to 3rd stage 1325.00-2550.00 per head.

COW & CALF PAIRS: Medium and Large 1-2 2-8 yrs 895-1432 lbs with <150 lb calves 1850.00-3000.00; 2-8 yrs 1173-1455 lbs some rebred 1st stage with 150-300 lb calves 2150.00-3150.00 per pair

AFTERNOON NATIONAL SLAUGHTER CATTLE REVIEW

So far for Friday in the Texas Panhandle negotiated cash trade has been moderate on moderate demand. Compared to last week live FOB purchases traded steady from 178.00-179.00. In Kansas negotiated cash trade has been slow on light to moderate demand. Compared to last week live FOB purchases traded steady at 179.00. In Nebraska negotiated cash trade has been limited on light demand. However, not enough live or dressed purchases for a full market trend. The last reported market was on Thursday live FOB purchases at 185.00 and dressed Delivered from 292.00-295.00. In Iowa negotiated cash trade has been slow on light demand. However, not enough live or dressed purchases for a full market trend. The last reported market was on Thursday live FOB purchases at 185.00. Last week dressed delivered purchases traded from 290.00-295.00.

Negotiated Cash Sales:

Confirmed:	24,947	Week Ago:	3,421	Year Ago:	2,220
Week to date:	61,123	Week Ago:	66,820	Year Ago:	66,088

<u>Live Basis</u>	<u>Steers</u>	<u>Heifers</u>
Over 80% Choice	178.00-187.00, avg 182.10	179.00-187.00, avg 181.27
65-80% Choice	178.00-179.00, avg 178.88	178.00-184.00, avg 179.50
35-65% Choice	178.00-179.00, avg 178.48	179.00
0-35% Choice	-	-
Total All Grades	178.00-187.00, avg 179.92	178.00-187.00, avg 180.33
<u>Dressed Basis</u>		
Over 80% Choice	292.00-295.00, avg 294.20	295.00
65-80% Choice	-	-
35-65% Choice	-	-
0-35% Choice	-	-
Total All Grades	292.00-295.00, avg 294.20	295.00

<u>All Beef Type Steers/Heifers</u>	<u>Head</u>	<u>Avg Wt</u>	<u>Price Range</u>	<u>Wtd Avg</u>
Live FOB	21,951	1366.3	178.00-188.00	180.94
Live Del	853	1358.0	185.00-188.00	186.51
Dressed Del	1,171	904.5	288.00-299.50	294.33
Dressed FOB	364	932.8	292.00-295.00	292.69

WEEKLY COMMODITY FUTURES TRENDS

Compared to last week, Live Cattle 1.83 to 2.35 higher, Lean Hogs 1.78 to 2.48 lower, Feeder Cattle 2.05 to 4.10 higher.

Daily Futures Closes

	Mon.	Tues.	Wed.	Thu.	Fri.
Cattle					
Aug	178.97	177.95	178.05	179.85	180.67
Oct	179.87	178.62	178.67	180.72	181.17
Dec	184.30	183.15	182.92	184.52	185.12
Feb	188.25	187.30	187.20	188.60	189.20
Apr	191.05	190.10	190.25	191.57	192.40
Lean Hogs					
Oct	80.62	79.57	78.55	80.47	79.82
Dec	73.72	72.35	71.05	71.90	72.02
Feb	78.02	76.55	75.37	75.95	76.37
Apr	82.77	81.52	80.75	81.20	81.47
May	87.00	85.92	85.22	85.57	85.67
Fdr Cat					
Aug	246.77	245.50	245.02	246.50	247.62
Sep	250.32	249.00	248.57	250.75	251.20
Oct	252.65	251.22	250.87	253.25	253.97
Nov	253.52	252.27	252.00	254.35	255.40
Jan	252.62	251.50	251.32	253.50	254.67
Milk					
Aug	17.28	17.22	17.24	17.19	17.21
Sep	18.88	18.50	18.39	18.76	18.94
Oct	18.21	17.86	17.75	18.20	18.65

WEEKLY COMMODITY GRAIN FUTURES TRENDS

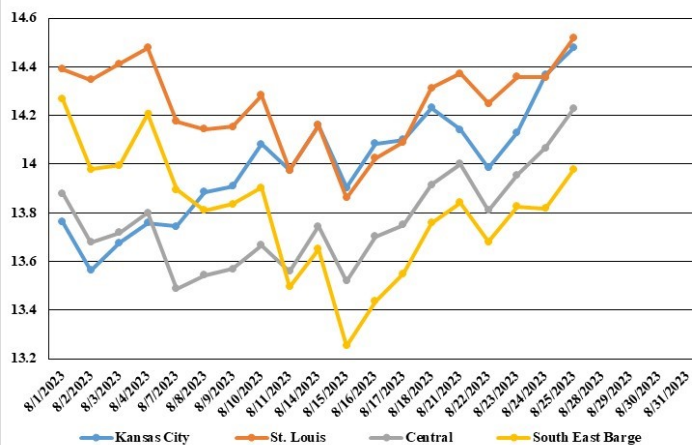
Compared to last week, Soybeans 0.18 to 0.35 higher, Wheat 0.11 to 0.20 lower, Corn 0.03 to 0.10 lower, KC Wheat steady to 0.04 higher, Soybean Meal 18.90 to 26.00 higher.

Daily Grain Futures Closes

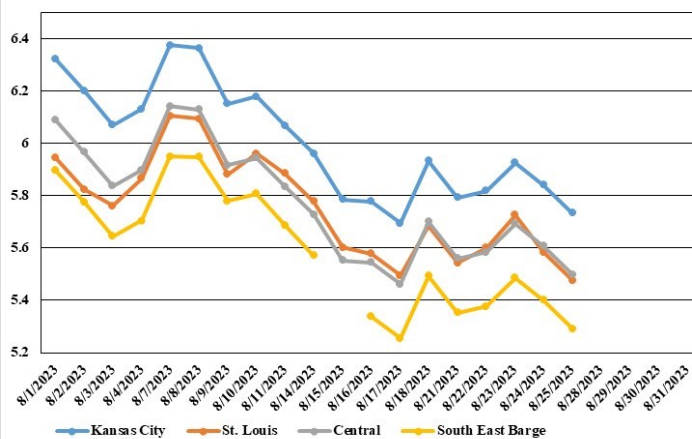
	Mon.	Tues.	Wed.	Thu.	Fri.
Soybeans					
Sep	1370	1351 1/2	1359 1/2	1365 3/4	1381
Nov	1361 3/4	1346	1360 1/2	1371 3/4	1387 3/4
Jan	1371 1/2	1356	1371	1383 1/2	1399 1/4
Mar	1374 1/4	1360	1374 3/4	1387 1/2	1402 1/2
May	1376 1/4	1363 1/4	1377 1/2	1389 3/4	1402 1/2
Wheat					
Sep	599 1/4	601 3/4	612 1/2	604	593 1/4
Dec	625 1/2	627 1/2	639 3/4	631 3/4	621 3/4
Mar	651	652 1/4	665 1/2	658	648 3/4
May	666 3/4	667 1/2	681	674	665 1/4
Jul	673	673 1/2	687 1/4	681 1/4	672 3/4
Corn					
Sep	469 1/4	466 1/2	476 1/4	472 1/4	470 3/4
Dec	482 1/2	479 1/2	490 1/2	488 1/4	488
Mar	496 3/4	493 1/2	503 3/4	503	502 3/4
May	504 1/2	501 1/2	511 1/4	510 3/4	511
Jul	508 1/2	505 1/2	514 3/4	514 1/2	514 3/4
KC Wheat					
Sep	741	740	755	753	754
Dec	748 1/4	747 3/4	763 3/4	762 1/4	764 1/2
Mar	752 1/4	752 1/4	769 1/4	767 3/4	768 3/4
May	755	755	772	770 1/2	770 3/4
Jul	740 3/4	739 3/4	752 1/2	752	753 1/2
SB Meal					
Sep	409.80	406.30	413.00	422.70	422.80
Oct	399.30	397.90	404.50	415.60	417.50
Dec	396.50	395.00	401.00	412.30	415.00
Jan	392.80	392.00	397.20	407.80	410.70
Mar	385.90	385.80	390.20	400.00	402.40

MONTHLY GRAIN CROP

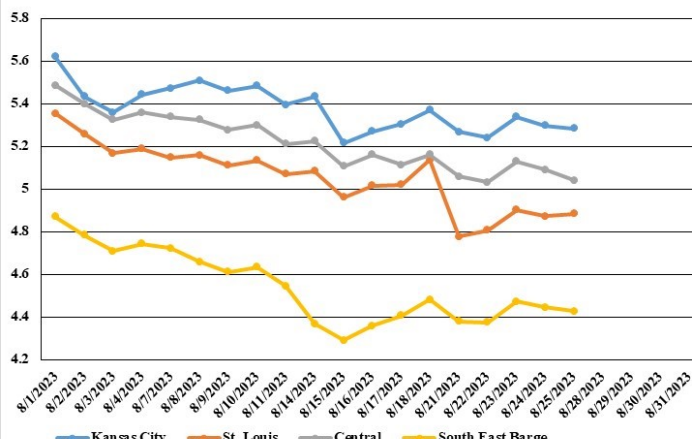
August 2023 Soybean Bids



August 2023 Wheat Bids



August 2023 Corn Bids



*Axis value ranges may be updated to reflect data points.

MISSOURI GRAIN WEEKLY TRENDS

Compared to last week, Soybeans 0.12 to 0.40 higher, Wheat 0.17 to 0.25 lower, Corn 0.01 to 0.49 lower, Sorghum 0.08 lower.

Area	#1 Soybeans	#2 Soft Wheat	#2 Corn	#2 Grain Sorghum
Kansas City				
Friday**	14.08-14.38	5.93	5.34-5.39	5.14
Monday	13.82-14.47	5.79	5.24-5.29	5.04
Tuesday	13.66-14.31	5.82	5.22-5.27	5.02
Wednesday	13.81-14.46	5.93	5.31-5.36	5.11
Thursday	14.17-14.57	5.84	5.27-5.32	5.07
Friday	14.33-14.63	5.73	5.26-5.31	5.06
St. Louis				
Friday**	14.31	5.68	4.87-5.39	---
Monday	14.35-14.40	5.54	4.77-4.78	---
Tuesday	14.24-14.26	5.57-5.67	4.77-4.85	---
Wednesday	14.39-14.41	5.68-5.78	4.86-4.94	---
Thursday	14.27-14.45	5.54-5.62	4.82-4.92	---
Friday	14.43-14.61	5.43-5.51	4.86-4.91	---
Central				
Friday**	13.83-13.98	5.63-5.93	5.09-5.19	---
Monday	13.92-14.07	5.49-5.59	4.99-5.09	---
Tuesday	13.76-13.86	5.52-5.62	4.97-5.07	---
Wednesday	13.91-14.01	5.63-5.73	5.06-5.16	---
Thursday	14.02-14.12	5.54-5.64	5.02-5.12	---
Friday	14.18-14.28	5.43-5.53	5.01-5.11	---
S.E. MO				
Friday**	13.73-13.78	5.49	4.44-4.55	---
Monday	13.82-13.87	5.35	4.34-4.45	---
Tuesday	13.66-13.70	5.38	4.37-4.41	---
Wednesday	13.81-13.85	5.49	4.46-4.50	---
Thursday	13.82	5.40	4.42-4.47	---
Friday	13.98	5.29	4.41-4.46	---

WHOLESALE FEEDSTUFFS PRICES (DOLLARS PER TON-BULK BASIS)

Area	Soybean Hulls Pellets	Soybean Meal 46.5-48%	Corn Gluten Pellets 21%	Wheat Middlings
Kansas City	212.50	433.80	236.50	172.50
St. Louis	n/a	n/a	234.00	158.33

(PRICES PER BUSHEL) *NEW CROP **PREVIOUS WEEK'S PRICES
*Bids calculated using Kansas City, St. Louis, and St. Joseph bids

LIVESTOCK SLAUGHTER

Commercial red meat production for the United States totaled 4.13 billion pounds in July, down 2 percent from the 4.23 billion pounds produced in July 2022.

Beef production, at 2.11 billion pounds, was 6 percent below the previous year. Cattle slaughter totaled 2.60 million head, down 6 percent from July 2022. The average live weight was up 3 pounds from the previous year, at 1,344 pounds.

Veal production totaled 3.8 million pounds, 8 percent below July a year ago. Calf slaughter totaled 23,200 head, down 21 percent from July 2022. The average live weight was up 36 pounds from last year, at 278 pounds.

Pork production totaled 2.01 billion pounds, up 2 percent from the previous year. Hog slaughter totaled 9.62 million head, up 3 percent from July 2022. The average live weight was down 3 pounds from the previous year, at 281 pounds.

Lamb and mutton production, at 9.5 million pounds, was down 9 percent from July 2022. Sheep slaughter totaled 159,600 head, 3 percent below last year. The average live weight was 118 pounds, down 8 pounds from July a year ago.

January to July 2023 commercial red meat production was 31.4 billion pounds, down 2 percent from 2022. Accumulated beef production was down 4 percent from last year, veal was down 12 percent, pork was up 1 percent from last year, and lamb and mutton production was down 1 percent.

MISSOURI WEEKLY SHEEP/GOAT AUCTION SUMMARY

Receipts: 1,461 Week Ago: 1,878 Last Year: 1,820

SHEEP: Feeder Lambs: Small and Medium 1-2 30-60 lbs 200.00-230.00, replacements 220.00, fancy 240.00.
Slaughter lambs Choice and Prime 1-3 50-70 lbs 202.50-207.50. Choice and Prime 1-3 hair 50-60 lbs 220.00-237.50, fancy 240.00-245.00; 60-70 lbs 212.50-235.00; 70-80 lbs 200.00-217.50; 80-90 lbs 165.00-187.50; 100-110 lbs 155.00-160.00. Choice 1-3 hair 50-60 lbs 195.00-203.00; 60-70 lbs 200.00-207.50; 70-80 lbs 175.00. Good 2-3 hair pkg 115 lbs 140.00. Slaughter ewes Good 2-3 hair 90-110 lbs 115.00-125.00 per head. Utility and Good 1-3 80-90 lbs 80.00-90.00/ha; 100-115 lbs 110.00-115.00/hd. Cull and Utility 1-2 95-125 lbs 65.00-75.00. Cull and Utility 1-2 90-100 lbs 65.00-80.00/hd. Hair bucks 1-2 115-165 lbs 95.00-120.00. Replacement ewes Small and Medium 1-2 <1 yrs pkg 90 lbs exp 190.00/hd; 1-2 yrs pkg 80 lbs exp 180.00/hd; 2-4 yrs 149 lbs exp 195.00/hd.

GOATS: Feeder Kids: Selection 1 30-50 lbs 260.00-285.00. Selection 2 30-40 lbs 200.00-260.00; 40-50 lbs 190.00-250.00. Selection 3 pkg 34 lbs 117.50; pkg 40 lbs 160.00. Wether kids Selection 3 10 hd 20 lbs pygmies 100.00.
Slaughter kids Selection 1 50-75 lbs 260.00-285.00. Selection 2 50-90 lbs 200.00-225.00, pygmies 205.00.
Slaughter nannies/does 90-140 lbs 100.00-125.00. Selection 1-2 pkg 68 lbs pygmies 100.00/hd; pkg 89 lbs 125.00/hd. Slaughter bucks/billies Selection 1-2 50-60 lbs pygmies 215.00-225.00; pkg 75 lbs 175.00; pkg 80 lbs 200.00; pkg 86 lbs pygmies 130.00; 90-100 lbs 135.00-180.00; pkg 108 lbs 120.00. Wethers Selection 1-2 pkg 55 lbs 205.00; pkg 96 lbs 270.00. Selection 1 pkg 68 lbs 270.00.
Replacement nannies/does Selection 1-2 2-4 yrs 70-80 lbs exp 210.00-220.00. Selection 1-2 <1 yrs 76 lbs exp 260.00/hd; pkg 60 lbs open 360.00/hd; 2-4 yrs 90-100 lbs exp 155.00-195.00/hd; 100-150 lbs exp 165.00-300.00 hd; 4-6 yrs pkg 98 lbs exp 160.00/hd.

MISSOURI CROP PROGRESS AND CONDITION 08/22/23

	Week Ending			2018-2022 Average
	08/20/23	08/13/23	08/20/22	
Corn dough	93	84	90	88
Corn dented	61	30	52	54
Corn mature	3	-	3	4
Soybeans Blooming	94	91	90	90
Soybeans setting pods	83	71	71	69
Cotton setting bolls	90	82	89	86
Rice headed	87	78	87	87
Alfalfa hay 3rd cutting	70	52	66	68

MISSOURI WEEKLY HAY SUMMARY 08/25/23

An extremely hot week across the state with actual temperatures near or exceeding triple digits the entire week. Several reports of hay equipment back in the fields as farmers are bailing recent growth trying to add some inventory to hay plies. The latest drought monitor is basically unchanged from last week although any effects from the week long heat wave won't be reflected until the next publication. Hay movement continues to be good the supply of hay is light and prices are mostly steady. The Missouri Department of Agriculture has a hay directory visit <http://mda.mo.gov/abd/haydirectory/> for listings of hay <http://agebb.missouri.edu/haylst/>

Alfalfa - Supreme 250.00-300.00, small square 10.00-15.00 per bale
Alfalfa - Premium 200.00-250.00
Alfalfa - Good 150.00-200.00, small square 5.00-10.00 per bale
Alfalfa - Fair 125.00-150.00
Alfalfa/grass mix - Good/Premium small square 5.00-10.00 per bale
Mixed grass - Good/Premium 150.00-225.00
Mixed grass - Fair/Good 100.00-175.00, small square 5.00-8.00 per bale
Mixed grass - Fair 60.00-125.00 per large round bale
Wheat straw - 4.00-7.00 per small square bale

Explanatory Notes: Stage - Represents estimated lambing/kidding period (Open, Exp=exposed, Bred, Fall = Sep-Nov, Win = Dec-Feb, Spr = Mar-May, Sum=Jun-Aug; w/s = woolled and shorn; /hd= per head; /fam=per family
All price CWT unless otherwise noted.

MISSOURI DROUGHT MONITOR

Date	None	D0	D1	D2	D3	D4
8/22/2023	27.67	19.46	32.70	15.04	5.13	0
8/15/2023	27.71	20.18	31.94	15.04	5.13	0
8/23/2022	50.62	23.13	20.16	4.55	1.54	0

Reflects percentage of Missouri impacted by drought. D0 Abnormally Dry; D1 Moderate Drought; D2 Severe Drought; D3 Extreme Drought; D4 Exceptional Drought

NATIONAL DIRECT DELIVERED FEEDER PIG REPORT

08/25/23 Receipts: 95,536 Week ago: 118,467 Year Ago: 57,922
Early weaned pigs steady and feeder pigs 9.00 higher.
Early weaned pigs 10-12 lbs. basis: Cash 60,275 head 5.00-19.00, weighted average 12.04.
Formula 25,342 head 14.28-51.91, weighted average 39.93
Feeder pigs 40 pounds basis: Cash 9,919 head 20.00-38.50, weighted average 33.50

NATIONAL DAILY DIRECT PRIOR DAY HOG REPORTS FOR 08/25/23

BARROWS AND GILTS (Carcass Basis): 3,232 head
Base Carcass Price 81.00-89.50, weighted average 87.24

SOWS (Live Basis): 6,381 head
300-500 lbs. 25.00-74.26
Over 500 lbs. 56.27-75.08

MISSOURI WEEKLY DIRECT SLAUGHTER CATTLE REPORT 08/25/23

Weekly Receipts: 440 Week ago: 280 Year ago: 320
As of Friday morning trade is light to moderate, Flat dressed sales are 3.00 lower and grid dressed sales are inactive.

LIVE STEERS & HEIFERS: DRESSED STEERS & HEIFERS:
Late last Fri 2 loads 188.00 No Sales Reported
FOB; 2 loads Wed 186.00 FOB

GRADE AND WEIGHT (Grid): Late last Fri 3 loads flat 295.00; Wed and Thu 4 loads 292.00 flat

Please Note: The above volumes (tonnage, acres, and bales) listed are for confirmed trades only, it does not include estimated volume (tonnage) for bids or offers to the trade. List your hay for sale at: Hay Listing Online Form. Explanation of Hay Quality Guidelines: Hay Quality Designation Guidelines. Glossary of Terms: Livestock, Poultry, & Grain Hay Terms

Click here for the current National Crop Progress
Click here for the current Missouri Crop Progress
The current hay directory can be found at: Hay Directory.