

Weekly Market Summary

Published by:
Missouri Department of Agriculture
Ag Business Development Division
Market News Program



Chris Chinn, Director
 Jill Wood, Division Director
 Tony Hancock, Editor
<http://www.ams.usda.gov/marketnews.htm>
<http://www.ams.usda.gov/marketnews.htm>

Michael L. Parson, Governor

Volume XLIII, Number 36 ♦ P.O. Box 630, Jefferson City, MO 65102 ♦ (573) 751-4211 ♦ Mon, Sep 11, 2023

MISSOURI WEEKLY FEEDER CATTLE WEIGHTED AVERAGE REPORT

Receipts: 11,329 Week ago: 20,414 Year ago: 12,133
 Steers and Heifers Medium and Large 1—Weighted average weights and prices

STEERS: Medium and Large 1

329 lbs. 327.29	521 lbs. 308.12	712 lbs. 263.95	919 lbs. 233.28
371 lbs. 325.65	574 lbs. 297.04	779 lbs. 254.34	
431 lbs. 318.59	626 lbs. 287.18	836 lbs. 259.83	
475 lbs. 312.93	673 lbs. 277.38	870 lbs. 258.85	

HEIFERS: Medium and Large 1

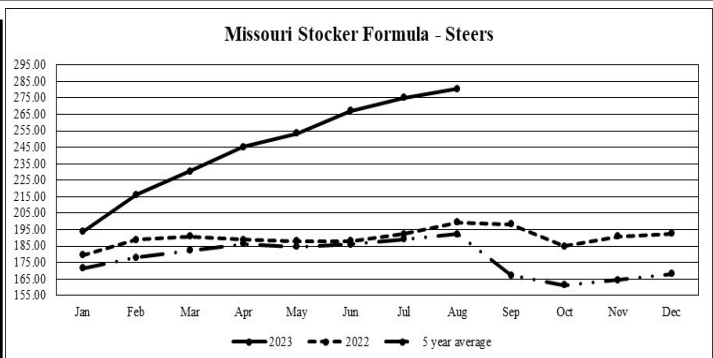
378 lbs. 277.74	577 lbs. 269.46	764 lbs. 235.51
413 lbs. 284.60	636 lbs. 264.42	809 lbs. 231.88
479 lbs. 272.97	669 lbs. 263.56	929 lbs. 217.29
525 lbs. 265.79	723 lbs. 256.15	

MISSOURI STEER (HEIFER) STOCKER FORMULA 09/11/2023

Monday's Missouri Stocker formula consists of **1463 (2481)** head with a weighted average weight of **553.54 (559.01)** lbs. and a price value of **288.51 (263.41)**, 1.93 higher (4.66 higher) than last week. This a rolling seven day calculated weighted value which combines all Feeder Steers reported by MDA/USDA Market News Service weighing from 400-649 lbs. in the Medium and Large 1 and Medium and Large 1-2 frame and muscle classifications, including all comment cattle except Brahman X. Heifer values are in parentheses.

MISSOURI WEEKLY CATTLE AUCTION SUMMARY

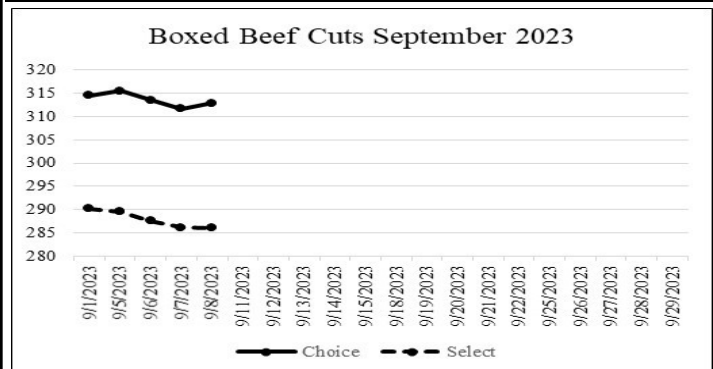
Compared to last week, a light test of feeders sold uneven from 4.00 lower to 5.00 higher. A shortened holiday week had many of the early week sales closed making for a light supply this week. Most of the northern markets were back on schedule this week however which heavily influenced weighted average prices making markets look much higher on paper as true comparisons of apples to apples were a bit harder to find. That being said Ozarks Regional Stockyards sold 224 head of yearling steers weighing 919 lbs. that brought 231.50, which was 4.00 lower than a near identical consignment from the same owner last week. On the flip side however Eastern Missouri Commission Company sold two loads of heifers 911 and 937 lbs. at 220.00 and 218.75 which was sure enough firm to higher than some similar consignments two weeks ago. Demand is moderate to good but temperatures are starting to swing and discounts for unweaned and or unvaccinated calves is becoming quite severe and likely to only get worse as buyers are calculating in health risk involved with taking ownership of these types. Although prices for all classes of cattle remain very high some of those mid to lighter weight calves without good verifiable health programs are seeing discounts that may exceed 200.00 per head. A few still out sales this week included a part load of 514 lb. steers at Lolli Brothers Livestock which sold at 315.50. Green City Livestock Market held a special sale with several eye catching loads including a load 661 lbs. at 299.00; a load 841 lbs. at 262.50 and a load 908 lbs. at 245.50. Several loads of heifers this week included 3 loads at Lolli Brothers Livestock from 575-600 lbs. which sold from 282.25-285.10. Windsor Livestock Auction had 173 head of heifers averaging 662 lbs. brought 269.75. Boxed beef cutouts gave back a little more ground this week. Choice closed at 312.90, down 1.59 and select closed at 286.05, down 4.24 compared to last Friday. Negotiated feedlot sales as of the Friday afternoon was only 43K head reported. Live sales were reported from 180.00-184.00 and dressed sales were reported at 290.00 Missouri Stocker formula consists of 1463 head with a weighted average weight of 553.54 lbs. and a price value of 288.51, 1.93 higher than a week ago. The steer/heifer spread is 25.10.



*Graph is updated the first Monday of each month. Axis value ranges may be updated to reflect data points.

NATIONAL BOXED BEEF CUTOUT/BOXED BEEF CUTS

<u>DATE</u>	<u>CHOICE</u>	<u>SELECT</u>	<u>TOTAL LOADS</u>
09/04	-	-	-
09/05	315.48	289.54	109
09/06	313.57	287.61	152
09/07	311.66	286.17	167
09/08	312.90	286.05	107
5 Day Simple Average	313.40	287.34	



*Axis value ranges may be updated to reflect data points.

WEEKLY LIVESTOCK SLAUGHTER 09/09/23

	<u>CATTLE</u>	<u>HOGS</u>	<u>SHEEP</u>
Week to Date:	559,000	2,234,000	28,000
Last Week:	629,000	2,381,000	33,000
Last Year:	606,000	2,252,000	31,000

The Weekly Market Summary, as well as historical summaries, are available on our website <https://agmarketnews.mo.gov/summaries>
 Market News Hotline: 1-573-522-9244

SOUTHWEST MISSOURI WEEKLY SUMMARY

(Joplin and Springfield)

Receipts: 1,241 Week ago: 7,311 Year ago: 1,562

Compared to last week, feeders under 700 lbs mostly steady to 2.00 higher. Steers over 700 lbs steady to 2.00 lower and heifers over 700 lbs not well tested. Slaughter cows steady to 2.00 higher. Slaughter bulls steady.

FEEDER STEERS:

Medium and Large 1

300-400 lbs. 299.00-306.00
Few 450-500 lbs. 287.00-295.00
500-600 lbs. 274.00-287.00
600-700 lbs. 272.00-288.00
700-800 lbs. 246.50-257.00

FEEDER HEIFERS:

Medium and Large 1

400-500 lbs. 261.00-266.00
500-600 lbs. 252.00-264.00
600-700 lbs. 229.00-247.00

FEEDER HOLSTEIN STEERS

Large 3

Scarce

SLAUGHTER COWS: Breaking and Boning (70-85% lean) 102.00-122.50; high dressing 112.00-134.00; low dressing 95.00-108.00. Lean (85-90%) 90.00-106.00

SLAUGHTER BULLS: Yield Grade 1-2 1275-2505 lbs. 119.00-131.00; high dressing 127.00-138.00; low dressing 96.00-115.00

BRED COWS: Medium and Large 1-2 2-8 yrs 1128-1285 lbs 2nd to 3rd stage 1550.00-1850.00; 7 head >8 yrs 1176 lbs 2nd to 3rd stage 1410.00 per head

COW & CALF PAIRS: Medium and Large 1-2 2-8 yrs 1060-1180 lbs with <150 to 300 lb calves 1900.00-2000.00; 4 pairs >8 yrs 760 lbs rebred 1st stage with <150 lb calves 1850.00 per pair

SOUTH CENTRAL MISSOURI WEEKLY SUMMARY

(West Plains, Phillipsburg)

Receipts: 4,078 Week ago: 5,054 Year Ago: 2,450

Compared to last week, early week feeder sales 2.00 to 4.00 lower and late week feeders unevenly steady from 2.00 lower to 5.00 higher. Slaughter cattle steady to 3.00 higher.

FEEDER STEERS:

Medium and Large 1

300-400 lbs. 315.00-332.50
400-500 lbs. 297.50-314.00
500-600 lbs. 285.00-305.00
600-700 lbs. 255.50-288.00
700-800 lbs. 252.50-265.25
900-950 lbs. 230.00-234.00

FEEDER HEIFERS:

Medium and Large 1 & 1-2

350-400 lbs. 265.00-280.00
400-500 lbs. 253.00-287.50
500-600 lbs. 250.00-268.00
600-700 lbs. 236.00-257.50
700-800 lbs. 225.00-240.00
19 hd 939 lbs. 205.00

FEEDER HOLSTEIN STEERS

Large 3

Scarce

SLAUGHTER COWS: Breaking and Boning (70-85% lean) 102.00-116.00; high dressing 110.00-131.00; low dressing 91.00-106.00. Lean (85-90%) 90.00-105.00

SLAUGHTER BULLS: Yield Grade 1-2 1185-2100 lbs. 110.00-130.00; high dressing 130.00-150.00; low dressing 101.00-119.00

BRED COWS: Medium and Large 1-2 2-8 yrs 1055-1330 lbs 2nd to 3rd stage 1250.00-1775.00, 1st stage 1275.00-1550.00 per head

COW & CALF PAIRS: Medium and Large 1-2 5 pairs 2-8 yrs 1242 lbs with 150-300 lb calves 1900.00 per pair

BRED HEIFERS: Medium and Large 1-2 3 hd <2 yrs 868 lbs 1st to 3rd stage 1100.00 per head

WEST CENTRAL MISSOURI WEEKLY SUMMARY

(Kingsville, Windsor, Butler)

Receipts: 2,410 Week ago: 4,063 Year ago: 2,478

Compared to last week, a light test of calves and feeders sold mostly steady. Slaughter cows and bulls sold steady to 3.00 higher.

FEEDER STEERS:

Medium and Large 1

300-400 lbs. 311.00-321.00
400-500 lbs. 278.00-325.00
500-600 lbs. 280.00-318.00
600-700 lbs. 257.50-288.00
700-800 lbs. 240.00-261.00

FEEDER HEIFERS:

Medium and Large 1

400-500 lbs. 246.00-295.00
500-600 lbs. 255.00-277.00
600-700 lbs. 239.00-269.75
700-800 lbs. 239.00-255.75
15 pkg 910 lbs. 192.50

SLAUGHTER BULLS: Yield

Grade 1-2 1285-2040 lbs 119.00-140.00; high dressing 136.00-145.00; low dressing 112.00-119.00.

SLAUGHTER COWS: Breaking

and Boning (70-85% lean) 103.00-128.00, high dressing 115.00-145.00 low dressing 96.50-111.00 Lean (85-90%) 90.00-109.00

BRED COWS: Scarce

COW & CALF PAIRS: Medium and Large 1-2 5-8 yrs 1185-1325 lbs with 150-300 lb calves 2325.00 -2650.00 per pair

NORTHEAST MISSOURI WEEKLY SUMMARY

(Bowling Green, Kingdom City, Palmyra)

Receipts: 3,038 Week ago: 2,937 Year ago: 2,292

Compared to two weeks ago, steers calves sold mostly steady with heifer calves under 600 lbs trading steady and several pot loads of 600-700 lb heifers sold 4.00-10.00 higher than the pot load lots of similar weights and quality from two weeks ago. Slaughter cows sold steady to firm.

FEEDER STEERS:

Medium and Large 1

400-500 lbs. 325.00-335.00
500-600 lbs. 295.00-329.00
600-700 lbs. 255.00-287.00
700-800 lbs. 249.00-269.00

FEEDER HEIFERS:

Medium and Large 1

400-500 lbs. 283.00-293.00
500-600 lbs. 258.50-269.00
600-700 lbs. 259.50
700-800 lbs. 234.00-249.00
800-900 lbs. 223.50-225.50
900-950 lbs. 218.75-220.00

SLAUGHTER BULLS: Yield

Grade 1-2 1475-2160 lbs 128.00-136.00; high dressing 139.00-143.00

SLAUGHTER COWS: Breaking

and Boning, (70-85% lean) 105.00-119.00; high dressing 114.00-130.50; low dressing 97.00-105.00. Lean (85-90%) 93.00-101.00

SLAUGHTER STEERS: Choice 2

-3 184.00-187.00. Select and Choice 1-3 181.00

SLAUGHTER HEIFERS: Select

and Choice 1-3 178.00-180.00

BRED COWS: Medium and Large 1 2-8 yrs, 981-1415 lbs 2nd and 3rd stage, 1975.00-2600.00 per head, Bred Heifers under 2 yrs 1050-1225 lbs 2nd and 3rd stage 2400.00-3050.00 per head.

COW/CALF PAIRS: Medium and Large 1 2-8 yrs, 1050-1350 lbs baby to 300 lbs calves, a few bred back 2875.00-3525.00 per pair

NORTH CENTRAL MISSOURI WEEKLY SUMMARY

(Macon, Unionville, Green City, New Cambria)

Receipts: 4,628 Week ago: 1,509 Year ago: 5,890

Compared to two weeks ago, steers under 700 lbs mostly steady on a light test, heifers over 600 lbs 4.00 to 10.00 higher, other weights lightly tested selling with a steady to higher undertone. Slaughter cows mostly steady.

*Some sale barns on a bi-weekly schedule and may not have a sale each week.

FEEDER STEERS:

Medium and Large 1

400-500 lbs. 308.00-339.00
500-600 lbs. 291.00-315.50
600-700 lbs. 271.00-305.00
700-800 lbs. 248.00-280.00
800-900 lbs. 255.00-262.50
63 hd 908 lbs. 245.50

FEEDER HEIFERS:

Medium and Large 1

17 hd 403 lbs. 309.50
450-500 lbs. 269.00-274.75
500-600 lbs. 261.00-280.25
600-700 lbs. 259.50-274.50
700-800 lbs. 254.75-261.50
73 hd 803 lbs. 235.10

SLAUGHTER BULLS: Yield

Grade 1-2 1010-2325 lbs 126.00-154.50; high dressing 137.00-149.00; low dressing 118.00-133.50.

SLAUGHTER COWS: Breaking

and Boning, (70-85% lean) 95.00-129.00, high dressing 114.00-134.00. Lean (85-90%) 91.50-110.00

BRED COWS: Scarce

COW & CALF PAIRS: Scarce

SOUTHEAST MISSOURI WEEKLY SUMMARY

(Jackson and Farmington) (w/e 09/01/23)

Receipts: 1,123 Week ago: 341 Year ago: 1,284

Compared to two weeks ago, steers and heifers uneven from 7.00 lower to 10.00 higher. Slaughter cows and bulls 2.00 lower to 1.00 higher.

FEEDER STEERS:
Medium and Large 1

300-400 lbs.	285.00-325.00
400-500 lbs.	280.00-315.50
500-600 lbs.	267.50-297.00
600-700 lbs.	243.00-269.00
700-750 lbs.	232.00-256.00
12 hd 976 lbs.	213.00

FEEDER HEIFERS:
Medium and Large 1

350-400 lbs.	257.50-287.00
400-500 lbs.	240.00-277.00
500-600 lbs.	228.00-274.00
600-700 lbs.	225.00-250.00
700-800 lbs.	215.00-233.00
800-900 lbs.	210.00-230.00

SLAUGHTER BULLS: Yield Grade 1-2 930-2070 lbs. 95.00-114.00; high dressing 110.50-128.00

SLAUGHTER COWS: Breaking and Boning (75-85% lean) 90.00-107.00; high dressing 102.00-115.00. Lean (85-90% lean) 70.00-89.00

BRED COWS: Medium and Large 2 2-8 yrs 1050-1550 lbs 2nd stage 1170.00-1565.00, 3rd stage 1210.00 -1875.00 per head

COW & CALF PAIRS: Scarce

EAST CENTRAL MISSOURI WEEKLY SUMMARY

(Cuba, Vienna) (w/e 09/01/23)

Receipts: 1,805 Week ago: 1,274 Year ago: 1,606

Compared to last week, steers and heifers 3.00 to 12.00 higher, based on limited comparisons. Slaughter cows 2.00 to 4.00 higher.

FEEDER STEERS:
Medium and Large 1

400-500 lbs.	316.00-322.50
500-600 lbs.	262.00-310.00
600-700 lbs.	263.00-288.00
700-800 lbs.	240.00-276.25
800-850 lbs.	238.00-246.00

FEEDER HEIFERS:
Medium and Large 1

400-500 lbs.	269.50-292.50
500-600 lbs.	250.00-278.50
600-700 lbs.	240.00-261.00
700-800 lbs.	212.50-240.25
800-900 lbs.	214.00-227.00

SLAUGHTER BULLS: Yield Grade 1-2 1340-2145 lbs 115.00-131.50; high dressing 125.00-142.00; low dressing 105.00-118.50.

SLAUGHTER COWS: Breaking and Boning, (70-85% lean) 105.50-113.00; high dressing 114.00-115.50. Lean (85-90%) 100.00-108.00

BRED HEIFERS: Medium and Large 1 <2 yrs 992-1040 lbs 1st to 2nd stage 2400.00-2550.00 per head

COW & CALF PAIRS: Medium and Large 1-2 5 pairs 2-8 yrs 925 lbs with 150-300 lb calves 2150.00 per pair

NORTHWEST MISSOURI WEEKLY SUMMARY

(Tina) (w/e 09/01/23)

Receipts: 951 Week Ago: 1,352 Year Ago: 1,303

Compared to last week, bulk of feeders steady to 5.00 higher. Slaughter cows and bulls 2.00 to 5.00 higher. (UW = Unweaned)

FEEDER STEERS:
Medium and Large 1

350-400 lbs.	330.00-340.00
400-500 lbs.	301.00-327.50
Pkg 541 lbs.	303.00
102hd502lbsUW	300.25
Pkg 605 lbs.	294.00
39 hd 722 lbs.	271.00

FEEDER HEIFERS:
Medium and Large 1

400-450 lbs.	270.00-279.00
47 hd452lbs.UW	273.00
Pkg 530 lbs.	276.00
106hd 531lbs UW	265.25

SLAUGHTER BULLS: Yield Grade 1-2 1465-2065 lbs 127.50-143.50

SLAUGHTER COWS: Breaking and Boning, (70-85% lean) 103.00-122.00; high dressing 116.00-126.00. Lean (85-90%) 92.00-107.00

BRED COWS: Scarce

COW & CALF PAIRS: Scarce

AFTERNOON NATIONAL SLAUGHTER CATTLE REVIEW

Thus far for Friday in Texas Panhandle negotiated cash trade has been slow on light to moderate demand. Compared to last week live FOB purchases traded 1.00 higher at 180.00. In Kansas negotiated cash trade has been slow on light to moderate demand. Compared to last week live FOB purchases traded 2.00 higher at 180.00. In Nebraska negotiated cash trade has been limited on light demand. However not enough purchases for a market trend. The last established dressed delivered purchase market was on Thursday at 290.00 on a light test. The latest established live FOB market was last week at 182.00. In the Western Cornbelt negotiated cash trade has been limited on light demand. However not enough purchases for a market trend. The latest established live FOB market was Thursday from 183.00-184.00. Last week dressed delivered purchases traded at 290.00 on a light test.

Negotiated Cash Sales:

Confirmed:	14,960	Week Ago:	5,452	Year Ago:	10,073
Week to date:	43,359	Week Ago:	65,832	Year Ago:	78,963

<u>Live Basis</u>	<u>Steers</u>	<u>Heifers</u>
Over 80% Choice	180.00-185.00, avg 182.49	180.00-185.00, avg 181.64
65-80% Choice	180.00	180.00
35-65% Choice	180.00	179.00-180.00, avg 179.60
0-35% Choice	-	-
Total All Grades	180.00-185.00, avg 180.81	179.00-185.00, avg 180.38
<u>Dressed Basis</u>		
Over 80% Choice	291.00	290.00
65-80% Choice	-	-
35-65% Choice	-	-
0-35% Choice	-	-
Total All Grades	291.00	290.00

<u>All Beef Type Steers/Heifers</u>	<u>Head</u>	<u>Avg Wt</u>	<u>Price Range</u>	<u>Wtd Avg</u>
Live FOB	13,073	1348.2	179.00-185.00	180.82
Live Del	167	1490.7	185.00	185.00
Dressed Del	363	888.6	290.00-294.00	290.95
Dressed FOB	656	926.6	290.00-292.00	291.36

WEEKLY COMMODITY FUTURES TRENDS

Compared to last week, Live Cattle 2.55 to 3.38 higher, Lean Hogs 0.15 to 1.53 lower, Feeder Cattle 3.50 to 4.50 higher.

Daily Futures Closes

	Mon.	Tues.	Wed.	Thu.	Fri.
Cattle					
Oct	Holiday	179.95	182.70	183.65	183.22
Dec		184.15	186.50	187.50	187.42
Feb		188.47	190.37	191.40	191.70
Apr		192.47	194.02	194.95	195.37
Jun		186.82	187.90	188.70	189.30
Lean Hogs					
Oct	Holiday	83.17	81.87	82.82	81.52
Dec		75.07	74.45	75.27	74.45
Feb		78.85	78.47	79.17	78.55
Apr		84.20	83.95	84.50	84.07
May		88.75	88.35	89.00	88.65
Fdr Cat					
Sep	Holiday	251.37	253.15	255.57	255.35
Oct		254.30	256.47	258.87	259.15
Nov		256.20	258.20	260.27	260.62
Jan		255.70	257.57	259.37	259.65
Mar		257.12	258.85	260.25	260.67
Milk					
Sep	Holiday	18.54	18.51	18.58	18.48
Oct		18.88	18.95	19.21	19.01
Nov		18.61	18.71	18.98	18.87

WEEKLY COMMODITY GRAIN FUTURES TRENDS

Compared to last week, Soybeans 0.02 to 0.07 lower, Wheat steady to 0.01 lower, Corn 0.01 to 0.04 higher, KC Wheat 0.04 to 0.10 higher, Soybean Meal Sep 0.80 lower, others 1.50 to 2.30 higher.

Daily Grain Futures Closes

	Mon.	Tues.	Wed.	Thu.	Fri.
Soybeans					
Sep	Holiday	1349	1360 1/4	1345	1349 1/2
Nov		1365	1376 1/4	1359 1/2	1363
Jan		1379	1389 1/4	1373 3/4	1378
Mar		1385	1394	1379 1/2	1384 1/4
May		1388 1/4	1395 3/4	1382 1/4	1387 1/2
Wheat					
Sep	Holiday	572 1/2	581	571 1/2	567 1/4
Dec		599 1/4	609	599 3/4	595 3/4
Mar		625	634 1/2	625 3/4	621 3/4
May		640 1/4	651	643	638 3/4
Jul		647 3/4	659	652	647 3/4
Corn					
Sep	Holiday	471	471 1/2	470 3/4	468 1/2
Dec		486	485 3/4	486 1/4	483 3/4
Mar		501	500	500	498
May		509 1/4	508 1/4	508 1/4	506 1/2
Jul		512 3/4	512	511 3/4	509 3/4
KC Wheat					
Sep	Holiday	721 1/4	746 1/2	733 3/4	725
Dec		724 1/2	749 1/2	737	732
Mar		728 3/4	752	741	735 1/2
May		731 1/2	753	743 3/4	737 3/4
Jul		717 3/4	737	727 3/4	722 3/4
SB Meal					
Sep	Holiday	406.30	408.10	403.40	411.90
Oct		399.30	400.90	396.40	402.70
Dec		397.60	399.20	395.30	401.40
Jan		395.20	396.90	393.40	399.10
Mar		390.20	391.70	389.40	394.30

MISSOURI GRAIN WEEKLY TRENDS

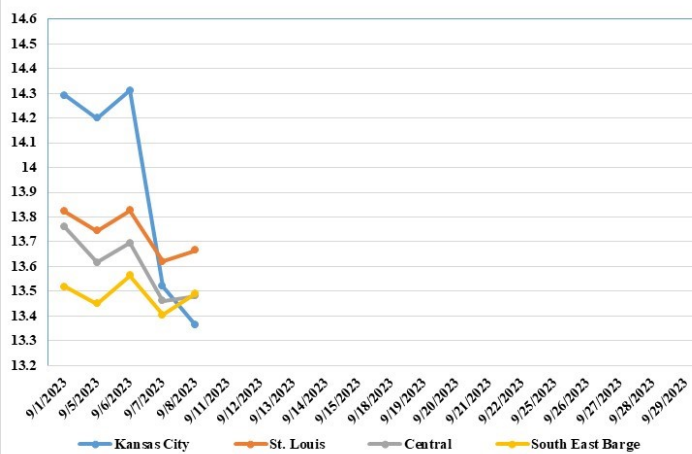
Compared to last week, Soybeans 0.15 to 1.11 lower, Wheat steady to 0.11 higher, Corn 0.63 lower to 0.16 higher, Sorghum 0.03 higher.

Area	#1 Soybeans	#2 Soft Wheat	#2 Corn	#2 Grain Sorghum
Kansas City				
Friday**	14.14-14.44	5.49	5.17-5.24	5.07
Monday	Holiday			
Tuesday	14.00-14.40	5.52	5.21-5.28	5.11
Wednesday	14.11-14.51	5.62	4.86-5.26	5.11
Thursday	13.00-14.05	5.53	4.86-5.06	5.11
Friday	12.98-14.08	5.49	4.54-5.04	5.09
St. Louis				
Friday**	13.81-13.83	5.13-5.21	4.72-4.75	—
Monday	Holiday			
Tuesday	13.74-13.75	5.24-5.27	4.77-4.78	—
Wednesday	13.79-13.86	5.34-5.37	4.77-4.79	—
Thursday	13.60-13.65	5.25-5.28	4.86-4.89	—
Friday	13.65-13.68	5.21-5.24	4.88-4.89	—
Central				
Friday**	13.59-13.99	5.26-5.28	4.82-4.92	—
Monday	Holiday			
Tuesday	13.55-13.65	5.29	4.86-4.96	—
Wednesday	13.56-13.76	5.39	4.86-4.96	—
Thursday	13.40-13.50	5.30	4.86-4.96	—
Friday	13.38-13.53	5.26	4.84-4.94	—
S.E. MO				
Friday**	13.49-13.54	—	4.38-4.40	—
Monday	Holiday	—	—	—
Tuesday	13.40-13.50	—	4.51-4.56	—
Wednesday	13.51-13.61	—	4.56-4.59	—
Thursday	13.29-13.60	—	4.59-4.66	—
Friday	13.31-13.63	—	4.58-4.84	—

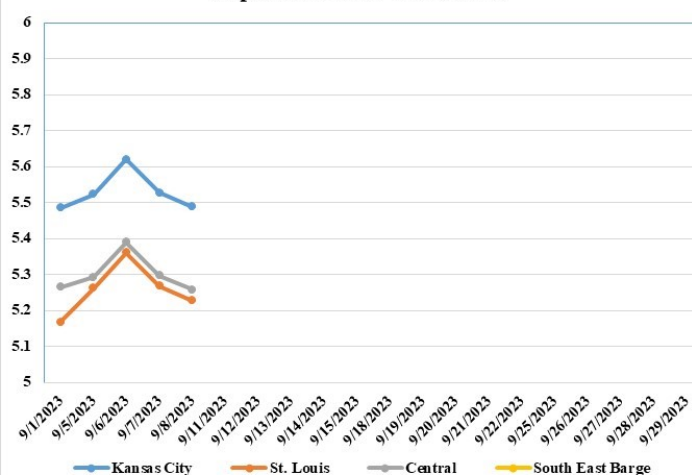
(PRICES PER BUSHEL) *NEW CROP **PREVIOUS WEEK'S PRICES
*Bids calculated using Kansas City, St. Louis, and St. Joseph bids

MONTHLY GRAIN CROP

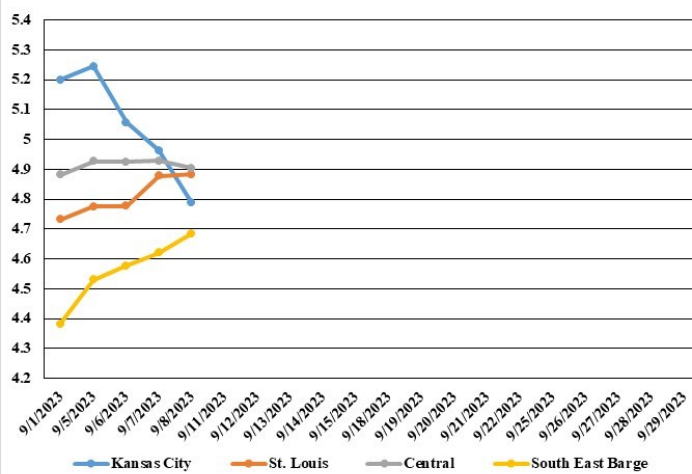
September 2023 Soybean Bids



September 2023 Wheat Bids



September 2023 Corn Bids



*Axis value ranges may be updated to reflect data points.

WHOLESALE FEEDSTUFFS PRICES (DOLLARS PER TON-BULK BASIS)

Area	Soybean Hulls Pellets	Soybean Meal 46.5-48%	Corn Gluten Pellets 21%	Wheat Middlings
Kansas City	205.00	408.70	228.00	171.67
St. Louis	n/a	n/a	223.00	160.00

DAIRY PRODUCTS

Total cheese output (excluding cottage cheese) was 1.16 billion pounds, 0.7 percent below July 2022 and 0.7 percent below June 2023.

Italian type cheese production totaled 482 million pounds, 1.5 percent below July 2022 but 0.2 percent above June 2023.

American type cheese production totaled 475 million pounds, 0.2 percent above July 2022 and 0.3 percent above June 2023.

Butter production was 157 million pounds, 3.5 percent above July 2022 but 3.2 percent below June 2023.

Dry milk products (comparisons in percentage with July 2022) Nonfat dry milk, human - 135 million pounds, down 18.6 percent. Skim milk powder - 62.6 million pounds, up 2.6 percent.

Whey products (comparisons in percentage with July 2022) Dry whey, total - 87.2 million pounds, up 3.4 percent. Lactose, human and animal - 92.7 million pounds, down 2.8 percent. Whey protein concentrate, total - 40.3 million pounds, up 10.6 percent.

Frozen products (comparisons in percentage with July 2022) Ice cream, regular (hard) - 62.0 million gallons, up 1.5 percent. Ice cream, lowfat (total) - 40.9 million gallons, up 0.6 percent. Sherbet (hard) - 1.65 million gallons, down 26.0 percent. Frozen yogurt (total) - 4.88 million gallons, down 2.5 percent.

BROILER HATCHERY

Broiler-Type Eggs Set in the United States Down 1 Percent

Hatcheries in the United States weekly program set 239 million eggs in incubators during the week ending September 2, 2023, down 1 percent from a year ago. Average hatchability for chicks hatched during the week in the United States was 80.2 percent. Average hatchability is calculated by dividing chicks hatched during the week by eggs set three-weeks earlier.

Broiler-Type Chicks Placed in the United States Down 2 Percent

Broiler growers in the United States weekly program placed 190 million chicks for meat production during the week ending September 2, 2023, down 2 percent from a year ago. Cumulative placements from the week ending January 7, 2023 through September 2, 2023 for the United States were 6.56 billion. Cumulative placements were down slightly from the same period a year earlier.

MISSOURI CROP PROGRESS AND CONDITION

	Week Ending			2018-2022 Average
	09/03/23	08/27/23	09/03/22	
Corn dented	87	76	85	82
Corn mature	32	16	29	26
Corn harvested	2	-	1	1
Soybeans setting pods	94	89	83	86
Cotton bolls opening	18	2	16	23
Rice headed	94	91	98	97
Rice harvested	5	1	-	2
Alfalfa hay 3rd cutting	88	76	84	85

MISSOURI WEEKLY HAY SUMMARY 09/07/23

A hint of fall was in the air this week as nights are starting to become cool and grain harvest is just starting for a few folks. Although no one wants to see it turn wet and become muddy a bit of moisture for pasture growth would be welcome as most areas have not seen any measurable moisture for a few weeks now. There is still some fall haying occurring around the state. Hay prices are steady. The overall supply of hay is light to moderate and demand is moderate. The Missouri Department of Agriculture has a hay directory visit <http://mda.mo.gov/abd/haydirectory/> for listings of hay <http://agebb.missouri.edu/haylst/>

- Alfalfa - Supreme 250.00-300.00, small square 10.00-15.00 per bale
- Alfalfa - Premium 200.00-250.00
- Alfalfa - Good 150.00-200.00, small square 5.00-10.00 per bale
- Alfalfa - Fair 125.00-150.00
- Alfalfa/grass mix - Good/Premium small square 5.00-10.00 per bale
- Mixed grass - Good/Premium 150.00-225.00
- Mixed grass - Fair/Good 100.00-175.00, small square 5.00-8.00 per bale
- Mixed grass - Fair 50.00-100.00 per large round bale
- Wheat straw - 4.00-7.00 per small square bale

Please Note: The above volumes (tonnage, acres, and bales) listed are for confirmed trades only, it does not include estimated volume (tonnage) for bids or offers to the trade. List your hay for sale at: [Hay Listing Online Form](#). Explanation of Hay Quality Guidelines: [Hay Quality Designation Guidelines](#). Glossary of Terms: [Livestock, Poultry, & Grain Hay Terms](#)

MISSOURI WEEKLY SHEEP/GOAT AUCTION SUMMARY

Receipts: 3044 Week Ago: 693 Last Year: 570

SHEEP: Feeder Lambs: Small and Medium 1-2 25-50 lbs 175.00-280.00. Slaughter Lambs: woolled and shorn Choice and Prime 1-3 50-70 lbs 230.00-240.00; 70-85 lbs 187.50-195.00; 100-150 lbs 145.00-150.00. hair Choice and Prime 1-3 50-70 lbs 212.50-265.00; 70-80 lbs 185.00-217.50; 80-105 lbs 170.00-190.00. Choice 1-3 50-60 lbs 205.00-225.00; 60-85 lbs 170.00-210.00. Slaughter Ewes: wool Cull and Utility 1-2 139-195 lbs 70.00-80.00. hair Good 2-3 66-134 lbs 100.00-105.00. Utility and Good 1-3 89-132 lbs 77.50-110.00. Cull and Utility 1-2 80-95 lbs 45.00-70.00; 100-165 lbs 70.00-85.00. Bucks: hair 110-160 lbs 100.00-130.00. Replacement Ewes: hair Small and Medium 1-2 2-4 yrs 60-125 lbs Exp. 115.00-210.00.

GOATS: Feeder Kids: Selection 1 30-50 lbs 250.00-320.00, replacements 400.00-430.00. Selection 2 20-50 lbs 200.00-255.00. Selection 3 30-50 lbs 100.00-185.00. Slaughter Kids: Selection 1 48-105 lbs 225.00-290.00. Selection 2 50-106 lbs 160.00-237.50. Selection 3 60-70 lbs 100.00-175.00. Slaughter Nannies Selection 1-2 pygmies 38-65 lbs 65.00-135.00; 60-150 lbs 85.00-150.00. Selection 3 80-110 lbs 70.00-115.00. Slaughter Billies: Selection 1-2 55-70 lbs 215.00-235.00; 80-140 lbs 150.00-205.00. Selection 3 70-90 lbs 100.00-112.50. Wethers Selection 1-2 80-120 lbs 290.00-310.00. Replacement Nannies: Selection 1 45-140 lbs Exp. 220.00-480.00 per head. Selection 2 45-125 lbs Exp. 115.00-185.00 per head. Selection 3 35-75 lbs 30.00-100.00 per head.

Explanatory Notes: Stage - Represents estimated lambing/kidding period (Open, Exp=exposed, Bred, Fall = Sep-Nov, Win = Dec-Feb, Spr = Mar-May, Sum=Jun-Aug; w/s = woolled and shorn; /hd = per head; /fam=per family All price CWT unless otherwise noted.

MISSOURI DROUGHT MONITOR

Date	None	D0	D1	D2	D3	D4
09/05/23	22.12	24.88	27.73	16.74	8.53	0
08/31/23	28.19	18.94	34.97	12.77	5.13	0
09/06/22	55.95	31.90	6.76	4.49	0.90	0

Reflects percentage of Missouri impacted by drought. D0 Abnormally Dry; D1 Moderate Drought; D2 Severe Drought; D3 Extreme Drought; D4 Exceptional Drought

NATIONAL DIRECT DELIVERED FEEDER PIG REPORT

09/08/23 Receipts: 128,299 Week ago: 111,930 Year Ago: 72,225 Early weaned pigs steady to 1.00 higher and feeder pigs 3.00 higher. Early weaned pigs 10-12 lbs. basis: Cash 102,700 head 5.00-20.00, weighted average 14.03. Formula 14,449 head 14.94-50.09 weighted average 33.44 Feeder pigs 40 pounds basis: Cash 11,150 head 28.00-41.50, weighted average 34.78

NATIONAL DAILY DIRECT PRIOR DAY HOG REPORTS FOR 09/08/23

BARROWS AND GILTS (Carcass Basis): 3,760 head Base Carcass Price 74.00-83.00, weighted average 80.22

SOWS (Live Basis): 7,278 head
300-500 lbs. 22.00-66.50
Over 500 lbs. 46.27-67.50

MISSOURI WEEKLY DIRECT SLAUGHTER CATTLE REPORT 09/08/23

Weekly Receipts: 240 Week ago: 240 Year ago: 280 As of Friday morning trade is light to moderate, Flat dressed sales are inactive and grid dressed sales steady.

LIVE STEERS & HEIFERS: Fri morn 2 loads 184.00 FOB
DRESSED STEERS & HEIFERS: No sales reported

GRADE AND WEIGHT (Grid): Thu 4 loads 296.00

Click here for the current [National Crop Progress](#)
Click here for the current [Missouri Crop Progress](#)
The current hay directory can be found at: [Hay Directory](#).