

Weekly Market Summary

Published by:
Missouri Department of Agriculture
Ag Business Development Division
Market News Program



Chris Chinn, Director
 Jill Wood, Division Director
 Tony Hancock, Editor
<http://www.ams.usda.gov/marketnews.htm>
<http://www.ams.usda.gov/marketnews.htm>

Michael L. Parson, Governor

Volume XLIII, Number 38 ♦ P.O. Box 630, Jefferson City, MO 65102 ♦ (573) 751-4211 ♦ Mon, Sep 25, 2023

MISSOURI WEEKLY FEEDER CATTLE WEIGHTED AVERAGE REPORT

Receipts: 23,438 Week ago: 27,190 Year ago: 17,640

Steers and Heifers Medium and Large 1—Weighted average weights and prices

STEERS: Medium and Large 1

337 lbs. 335.08	521 lbs. 304.87	725 lbs. 270.71	924 lbs. 243.34
385 lbs. 337.48	573 lbs. 296.76	773 lbs. 259.42	962 lbs. 236.70
424 lbs. 313.00	625 lbs. 279.69	817 lbs. 251.95	
477 lbs. 309.35	671 lbs. 275.09	875 lbs. 242.57	

HEIFERS: Medium and Large 1

324 lbs. 284.11	523 lbs. 265.31	724 lbs. 246.37	926 lbs. 211.01
382 lbs. 288.09	577 lbs. 262.87	773 lbs. 237.87	
425 lbs. 279.34	623 lbs. 258.95	811 lbs. 230.08	
471 lbs. 274.62	676 lbs. 252.26	871 lbs. 227.55	

MISSOURI STEER (HEIFER) STOCKER FORMULA 09/25/2023

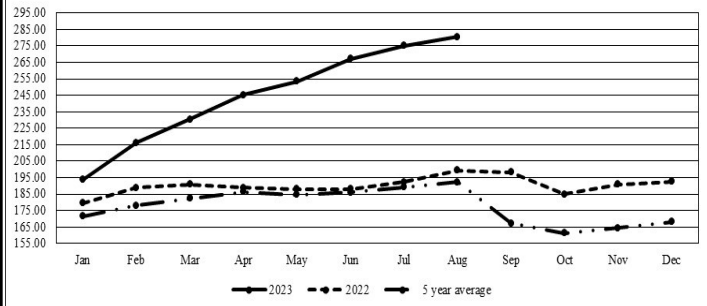
Monday's Missouri Stocker formula consists of **4089 (4053)** head with a weighted average weight of **543.42 (534.56)** lbs. and a price value of **286.85 (256.16)**, 0.11 lower (0.93 lower) than last week.

This a rolling seven day calculated weighted value which combines all Feeder Steers reported by MDA/USDA Market News Service weighing from 400-649 lbs. in the Medium and Large 1 and Medium and Large 1-2 frame and muscle classifications, including all comment cattle except Brahman X. Heifer values are in parentheses.

MISSOURI WEEKLY CATTLE AUCTION SUMMARY

Compared to last week, feeders sold mostly steady with some spots 5.00 higher, although discounts for unweaned and/or unvaccinated calves continues to be significant. This is resulting in some wide price differences between those calves that are highly desirable and those that come with a lot of risk. Load lots of yearlings continue to show gains and set new price records. The supply of feeders was moderate, but varied from very light to heavy between individual barns across the state this week with no real obvious reason as to why. Demand was moderate and as will be the case for the next month at least management practices or lack thereof will be a huge factor in whether producers see the tops or bottoms of prices spreads. The monthly cattle on feed report was released on Friday with no surprises as actual numbers were perfectly in line with pre-report estimates. Grain harvest is in full swing with nearly everyone shelling corn now. There has been a few bean fields have been cut but most combines are currently in the corn fields. A few stick out sales this week included a load of 572 lb. steers at Callaway Livestock Center at 315.00 as well as the record setting load of 906 lb. steers which sold for 251.10. New Cambria Livestock Market sold a load of 727 lb. steers for 289.25. Joplin Regional Stockyards sold a load of 809 lb. steers at 253.00 as well as 25 head of 341 lb. calves at 335.00. Big groups of feather weights are hard to find currently, but there was some small lots, under 10 head, of three and four weights scattered around that sold way up in the 3's but nothing yet has started with a 4 which was seen a couple of different weeks by a few head back in 2014-15. Boxed beef cutouts continued the seasonal trend lower this week. Choice closed at 303.33, down 2.38 and select closed at 280.43, down 2.69 compared to last Friday. Negotiated feedlot sales as of the Friday afternoon was near 75K head reported. Live sales were reported from 184.00-186.00 and dressed sales were reported at mostly 292.00. Missouri Stocker formula consists of 4089 head with a weighted average weight of 543.42 lbs. and a price value of 286.85, 0.11 lower than a week ago. The steer/heifer spread is 30.69.

Missouri Stocker Formula - Steers

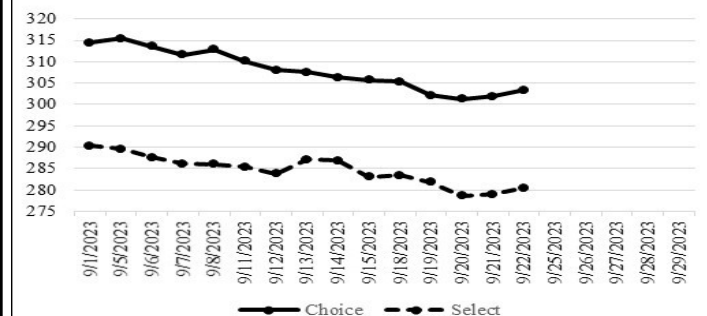


*Graph is updated the first Monday of each month. Axis value ranges may be updated to reflect data points.

NATIONAL BOXED BEEF CUTOUT/BOXED BEEF CUTS

<u>DATE</u>	<u>CHOICE</u>	<u>SELECT</u>	<u>TOTAL LOADS</u>
09/18	305.32	283.41	113
09/19	302.12	281.78	165
09/20	301.26	278.68	196
09/21	301.93	279.00	132
09/22	303.33	280.43	98
5 Day Simple Average	302.79	280.66	

Boxed Beef Cuts September 2023



*Axis value ranges may be updated to reflect data points.

WEEKLY LIVESTOCK SLAUGHTER 09/23/23

	<u>CATTLE</u>	<u>HOGS</u>	<u>SHEEP</u>
Week to Date:	625,000	2,537,000	32,000
Last Week:	632,000	2,531,000	35,000
Last Year:	671,000	2,555,000	35,000

The Weekly Market Summary, as well as historical summaries, are available on our website <https://agmarketnews.mo.gov/summaries>
 Market News Hotline: 1-573-522-9244

SOUTHWEST MISSOURI WEEKLY SUMMARY

(Joplin and Springfield)

Receipts: 10,420 Week ago: 13,609 Year ago: 7,942

Compared to last week, feeders early week steers 3.00 to 6.00 higher and heifers 6.00 to 10.00 higher, late week feeder steers steady to 5.00 lower and heifers mostly 2.00 to 6.00 lower. Slaughter cows 1.00 to 4.00 lower and slaughter bulls steady to 3.00 lower.

FEEDER STEERS:
Medium and Large 1

300-400 lbs.	313.00-335.00
400-500 lbs.	293.00-337.50
500-600 lbs.	278.00-317.00
600-700 lbs.	268.00-288.00
700-800 lbs.	252.00-282.00
800-900 lbs.	242.00-265.00
900-1000 lbs.	234.50-237.00

FEEDER HEIFERS:
Medium and Large 1

300-400 lbs.	280.00-310.00
400-500 lbs.	253.00-290.00
500-600 lbs.	247.00-270.00
600-700 lbs.	235.00-266.00
700-800 lbs.	232.50-256.00
800-900 lbs.	220.00-236.50
900-1000 lbs.	208.00-211.00

FEEDER HOLSTEIN STEERS
Large 3

Scarce

SLAUGHTER COWS: Breaking and Boning (70-85% lean) 97.50-117.00, high dressing 110.00-123.50; low dressing 94.00-104.50. Lean (85-90%) 88.00-105.00

SLAUGHTER BULLS: Yield Grade 1-2 1210-2230 lbs. 113.50-129.00; high dressing 126.00-135.00; low dressing 91.00-114.00

BRED COWS: Medium and Large 1 2-4 yrs 1120-1230 lbs 2nd to 3rd stage 1800.00-2000.00; 2-8 yrs 1251-1408 lbs 2nd to 3rd stage 1675.00-2050.00; >8 yrs 1209 lbs 2nd to 3rd stage 1595.00 per head

BRED HEIFERS: Medium and Large 1-2 2-4 yrs 818-1175 lbs 1st to 3rd stage 1250.00-1500.00 per head

COW & CALF PAIRS: Medium and Large 1-2 couple 2-8 yrs 1230-1450 lbs

SOUTH CENTRAL MISSOURI WEEKLY SUMMARY

(West Plains, Phillipsburg)

Receipts: 5,347 Week ago: 5,166 Year Ago: 2,462

Compared to last week, calves early week 4.00 to 8.00 higher and yearlings 3.00 to 4.00 higher, late week feeders steady to 5.00 lower. Slaughter cows steady to 4.00 lower. Slaughter bulls steady.

FEEDER STEERS:
Medium and Large 1

300-400 lbs.	312.50-350.00
400-500 lbs.	281.00-317.50
500-600 lbs.	275.00-313.00
600-700 lbs.	267.00-287.50
700-800 lbs.	251.00-272.00
800-850 lbs.	248.00-250.00

FEEDER HEIFERS:
Medium and Large 1

300-400 lbs.	260.00-295.00
400-500 lbs.	252.50-279.00
500-600 lbs.	250.00-277.00
600-700 lbs.	236.00-265.00
700-800 lbs.	227.50-249.00
800-850 lbs.	231.00-231.50
Pkg 921 lbs.	220.00

FEEDER HOLSTEIN STEERS
Large 3

Scarce

SLAUGHTER COWS: Breaking and Boning (70-85% lean) 100.00-111.00, high dressing 110.00-123.00; low dressing 80.00-101.00. Lean (85-90%) 84.00-99.00

SLAUGHTER BULLS: Yield Grade 1-2 1230-2078 lbs. 112.50-130.00; high dressing 125.00-144.00; low dressing 91.00-120.00

BRED COWS: Medium and Large 1-2 2-8 yrs 810-1420 lbs 2nd to 3rd stage 1100.00-1820.00, 1st stage 1075.00-1600.00; >8 yrs 965-1245 lbs 2nd to 3rd stage 1100.00-1300.00 per head

BRED HEIFERS: Medium and Large 1 <2 yrs 1000-1050 lbs 1st to 3rd stage 1575.00-1685.00 per head

COW & CALF PAIRS: Medium and Large 1-2 2-8 yrs 1100-1250 lbs with 150-300 lb calves 1400.00-2200.00 per pair

WEST CENTRAL MISSOURI WEEKLY SUMMARY

(Kingsville, Windsor, Butler)

Receipts: 4,408 Week ago: 5,080 Year ago: 3,616

Compared to last week, steers and heifers steady to 3.00 higher. Slaughter cows mostly 2.00 to 8.00 lower.

FEEDER STEERS:
Medium and Large 1

350-400 lbs.	324.00-357.50
400-500 lbs.	280.00-337.00
500-600 lbs.	269.50-330.00
600-700 lbs.	267.00-301.00
700-800 lbs.	252.00-275.00
800-900 lbs.	231.00-249.50

FEEDER HEIFERS:
Medium and Large 1

300-400 lbs.	290.00-315.00
400-500 lbs.	267.50-300.00
500-600 lbs.	257.00-280.00
600-700 lbs.	251.00-265.00
700-800 lbs.	237.50-257.00
Pkg 869 lbs.	230.00

SLAUGHTER BULLS: Yield Grade 1-2 1380-2140 lbs 120.00-135.00; high dressing 131.50-140.00; low dressing 109.50-117.50

SLAUGHTER COWS: Breaking and Boning (70-85% lean) 96.00-119.00, high dressing 105.00-123.00 low dressing 85.50-100.50. Lean (85-90%) 77.50-99.50

BRED COWS: Medium and Large 1-2 2-4 yrs 6 hd 997 lbs 2nd to 3rd stage 1500.00; 5-8 yrs 1165-1315 lbs 2nd to 3rd stage 1525.00-1610.00 per head

COW & CALF PAIRS: Medium 2 5-8 yrs 925-1150 lbs with 150-300 lb calves 1200.00-1250.00 per pair

NORTHEAST MISSOURI WEEKLY SUMMARY

(Bowling Green, Kingdom City, Palmyra)

Receipts: 3,190 Week ago: 4,276 Year ago: 3,002

Compared to last week, steers 400-600 lbs steady to firm, 600-700 lbs steady to 5.00 higher, over 700 lbs higher undertone. Heifers steady to firm. Slaughter cows steady to 3.00 lower.

FEEDER STEERS:
Medium and Large 1

400-500 lbs.	316.00-345.00
500-600 lbs.	290.00-32.50
600-700 lbs.	274.00-298.00
700-800 lbs.	253.00-267.50
800-900 lbs.	246.00-253.25
900-950 lbs.	240.50-251.10

FEEDER HEIFERS:
Medium and Large 1

400-500 lbs.	279.00-308.00
500-600 lbs.	269.00-285.50
600-700 lbs.	263.00-278.50
700-750 lbs.	258.00-262.50
800-900 lbs.	222.75-232.50

SLAUGHTER BULLS: Yield Grade 1-2 1375-2190 lbs 124.00-138.00; high dressing 138.00-143.00

SLAUGHTER COWS: Breaking and Boning, (70-85% lean) 105.00-116.00; high dressing 114.00-126.00; low dressing 92.00-107.00. Lean (85-90%) 93.00-102.50

SLAUGHTER STEERS: Select and Choice 1-3 180.00

SLAUGHTER HEIFERS: Scarce

BRED COWS: Scarce

COW/CALF PAIRS: Scarce

NORTH CENTRAL MISSOURI WEEKLY SUMMARY

(Macon, Unionville, Green City, New Cambria)

Receipts: 1,120 Week ago: 920 Year ago: 1,350

Compared to two weeks ago, steers and heifers unevenly steady on comparable sales. Slaughter cows 1.00 to 3.00 lower.

*Some sale barns on a bi-weekly schedule and may not have a sale each week.

FEEDER STEERS:
Medium and Large 1

500-600 lbs.	290.25-295.50
600-700 lbs.	289.75-287.50
53 hd 727 lbs.	289.25
800-850 lbs.	255.50-258.00

FEEDER HEIFERS:
Medium and Large 1

500-550 lbs.	270.00-275.50
600-700 lbs.	264.00-265.00

SLAUGHTER BULLS: Yield Grade 1-2 1500-2000 lbs 120.00-148.00, couple high dressing 157.50-158.50

SLAUGHTER COWS: Breaking and Boning, (70-85% lean) 101.00-125.00. Lean (85-90%) 94.00-109.50

BRED COWS: Scarce

COW & CALF PAIRS: Scarce

SOUTHEAST MISSOURI WEEKLY SUMMARY

(Jackson and Farmington)

Receipts: 1,757 Week ago: 1,899 Year ago: 1,712
 Compared to last week, feeders very uneven from 6.00 lower to 6.00 higher. Slaughter cows and bulls 5.00 lower.

FEEDER STEERS:
 Medium and Large 1

300-400 lbs.	277.50-320.00
400-500 lbs.	264.00-310.00
500-600 lbs.	272.00-300.00
600-700 lbs.	239.00-282.00
700-800 lbs.	228.00-258.00
800-900 lbs.	220.00-249.00

FEEDER HEIFERS:
 Medium and Large 1

300-400 lbs.	240.00-300.00
400-500 lbs.	230.00-300.00
500-600 lbs.	221.00-276.00
600-700 lbs.	225.00-251.00
700-800 lbs.	220.00-241.00

SLAUGHTER BULLS: Yield Grade 1-2 1220-1895 lbs. 110.00-111.00; high dressing 114.00-125.00

SLAUGHTER COWS: Breaking and Boning (75-85% lean) 81.00-98.50; high dressing 100.00-112.00. Lean (85-90% lean) 70.00-96.00

BRED COWS: Medium and Large 2 2-8 yrs 1005-1385 lbs 1st to 3rd stage 1235.00-1585.00 per head

COW & CALF PAIRS: Medium and Large 2 couple 2-8 yrs 1025-1050 lbs with <150 lb calves 1500.00-1875.00 per pair

EAST CENTRAL MISSOURI WEEKLY SUMMARY

(Cuba, Vienna)

Receipts: 1,272 Week ago: 2,779 Year ago: 1,594
 Compared to last week, steers and heifers steady to 3.00 higher. Slaughter cows steady to 2.00 lower.

FEEDER STEERS:
 Medium and Large 1

400-450 lbs.	312.50-322.50
500-550 lbs.	290.00-296.00
600-700 lbs.	261.00-275.00

FEEDER HEIFERS:
 Medium and Large 1

Pkg 430 lbs.	290.00
500-600 lbs.	257.00-284.00
Pkg 605 lbs.	267.00
Pkg 835 lbs.	234.00

SLAUGHTER BULLS: Yield Grade 1-2 1270-2125 lbs 110.00-130.00; low dressing 108.50-116.00

SLAUGHTER COWS: Breaking and Boning, (70-85% lean) 98.00-112.50; high dressing 110.00-120.50 Lean (85-90%) 90.00-99.00

BRED HEIFERS: Medium and Large 1-2 2-8 yrs 1240-1260 lbs 2nd to 3rd stage 1525.00-1885.00; >8 yrs 1140-1160 lbs 2nd stage 1160.00-1275.00 per head

COW & CALF PAIRS: Scarce

NORTHWEST MISSOURI WEEKLY SUMMARY

(Tina)

Receipts: 1,365 Week Ago: 1,350 Year Ago: 1,660
 Compared to last week, steady to firm on a lighter offering. Slaughter cows and bulls 2.00 to 4.00 lower.

FEEDER STEERS:
 Medium and Large 1

400-500 lbs.	306.00-324.00
500-600 lbs.	307.00-310.00
600-700 lbs.	277.00-285.00

FEEDER HEIFERS:
 Medium and Large 1

400-500 lbs.	277.50-292.50
500-550 lbs.	266.00-267.50
600-650 lbs.	266.00

SLAUGHTER BULLS: Yield Grade 1-2 1395-2320 lbs 118.00-135.50

SLAUGHTER COWS: Breaking and Boning, (70-85% lean) 94.00-115.00; high dressing 115.50-126.50. Lean (85-90%) 92.00-109.00

BRED COWS: Medium and Large 1 2-8 yrs 955-1485 lbs 1st to 2nd stage 1725.00-1800.00, 2nd to 3rd stage 1425.00-2375.00; 5-8 yrs 1100-1420 lbs 1st to 2nd stage 1310.00-1485.00, 2nd to 3rd stage 1285.00-1950.00 per head

COW & CALF PAIRS: Medium and Large 1 2-8 yrs 1123-1438 lbs with 150-300 lb calves 2000.00-3100.00; 2-8 yrs 1306-1650 lbs rebred 1st to 2nd stage with >300 lb calves 2550.00-3050.00 per pair

AFTERNOON NATIONAL SLAUGHTER CATTLE REVIEW

Thus far for Friday in Southern Plains negotiated cash trade has been inactive on light demand. The most recent reported market was Thursday with live FOB purchases at 183.00. In Nebraska negotiated cash trade has been slow on light demand the most recent reported market was Thursday with live FOB purchases from 184.00-185.00, with dressed delivered purchases at 292.00. In the Western Cornbelt negotiated cash trade has been slow on light to moderate demand. The most recent reported market was Thursday with live FOB purchases from 185.00-186.00, with dressed delivered purchases traded at 292.00.

Negotiated Cash Sales:

Confirmed:	5,869	Week Ago:	25,150	Year Ago:	9,483
Week to date:	74,588	Week Ago:	46,818	Year Ago:	110,427

<u>Live Basis</u>	<u>Steers</u>	<u>Heifers</u>
Over 80% Choice	185.00-186.00, avg 185.40	185.00
65-80% Choice	183.00-185.00, avg 183.66	183.00-183.50, avg 183.22
35-65% Choice	-	-
0-35% Choice	-	-
Total All Grades	183.00-186.00, avg 185.04	183.00-185.00, avg 183.55
<u>Dressed Basis</u>		
Over 80% Choice	292.00-293.00, avg 292.78	292.00
65-80% Choice	291.00	-
35-65% Choice	-	-
0-35% Choice	-	-
Total All Grades	291.00-293.00, avg 292.63	292.00

<u>All Beef Type Steers/Heifers</u>	<u>Head</u>	<u>Avg Wt</u>	<u>Price Range</u>	<u>Wtd Avg</u>
Live FOB	4,625	1442.3	181.00-189.00	184.68
Live Del	177	1411.0	185.00-187.00	186.27
Dressed Del	799	903.2	291.00-293.00	292.33
Dressed FOB	136	974.4	292.00	292.00

WEEKLY COMMODITY FUTURES TRENDS

Compared to last week, Live Cattle Oct 0.15 higher, others 0.47 to 1.40 lower, Lean Hogs 1.60 to 3.42 lower, Feeder Cattle 1.27 to 5.32 lower.

Daily Futures Closes

	Mon.	Tues.	Wed.	Thu.	Fri.
Cattle					
Oct	186.32	185.67	186.77	184.97	187.07
Dec	191.00	190.47	191.52	189.50	191.35
Feb	195.75	194.92	195.85	194.07	195.55
Apr	198.87	198.27	199.35	197.55	199.00
Jun	192.65	191.80	193.07	191.05	192.42
Lean Hogs					
Oct	83.25	84.85	85.77	82.95	81.52
Dec	74.42	76.25	78.22	74.47	72.17
Feb	77.75	79.20	80.90	77.75	75.35
Apr	83.45	84.67	85.75	83.42	81.27
May	88.37	89.30	90.02	88.00	86.42
Fdr Cat					
Sep	254.25	253.50	254.17	253.27	254.10
Oct	260.95	259.35	260.57	257.77	259.15
Nov	265.42	265.02	265.57	262.70	263.52
Jan	266.15	265.70	267.00	264.45	265.90
Mar	268.02	267.50	269.20	266.75	268.35
Milk					
Sep	18.37	18.36	18.28	18.38	18.41
Oct	17.80	17.54	17.12	17.01	17.16
Nov	18.02	17.65	17.25	17.22	17.34

WEEKLY COMMODITY GRAIN FUTURES TRENDS

Compared to last week, Soybeans 0.37 to 0.44 lower, Wheat 0.18 to 0.25 lower. Corn steady to 0.02 higher, KC Wheat 0.24 to 0.36 lower, Soybean Meal 5.40 to 7.30 lower.

Daily Grain Futures Closes

	Mon.	Tues.	Wed.	Thu.	Fri.
Soybeans					
Nov	1316 3/4	1315 1/2	1320	1293 3/4	1296 1/4
Jan	1332 3/4	1331 3/4	1336 1/4	1310 3/4	1313 1/2
Mar	1343 1/2	1342 1/4	1346 3/4	1322 1/4	1324 3/4
May	1350 1/4	1349	1353 1/2	1330	1332
Jul	1350 1/4	1349 1/4	1354	1332	1333 1/4
Wheat					
Dec	591 1/4	584	588 3/4	575 3/4	579 1/2
Mar	616 3/4	610 1/4	614 3/4	602 1/4	606 1/2
May	633 1/4	627 1/4	630 3/4	619	623 3/4
Jul	640 1/2	636	639 1/2	628 3/4	633 1/2
Sep	651 1/4	647 3/4	651 1/2	640 3/4	645 3/4
Corn					
Dec	471 1/2	476 1/4	482 1/4	475 1/4	477 1/4
Mar	485 3/4	490 1/2	496 3/4	490	492 1/4
May	494 1/2	499	505 1/2	498 1/2	501
Jul	499	503 3/4	510	502 3/4	505 1/2
Sep	499	502 1/2	508	500 3/4	503
KC Wheat					
Dec	735	731	729	710 1/2	711 1/4
Mar	739 3/4	736 1/4	734 1/2	717	718 1/2
May	741 1/2	738 3/4	738	721 1/2	723
Jul	723 3/4	722 1/2	724 1/4	709 1/4	711 1/4
Sep	726 1/2	725	726 3/4	712 3/4	715 1/4
SB Meal					
Oct	390.40	391.50	397.20	390.30	388.20
Dec	387.90	389.20	395.10	388.10	385.80
Jan	384.50	385.90	391.60	384.80	382.30
Mar	378.90	380.20	385.40	379.00	376.30
May	374.90	376.30	381.60	375.30	372.40

MISSOURI GRAIN WEEKLY TRENDS

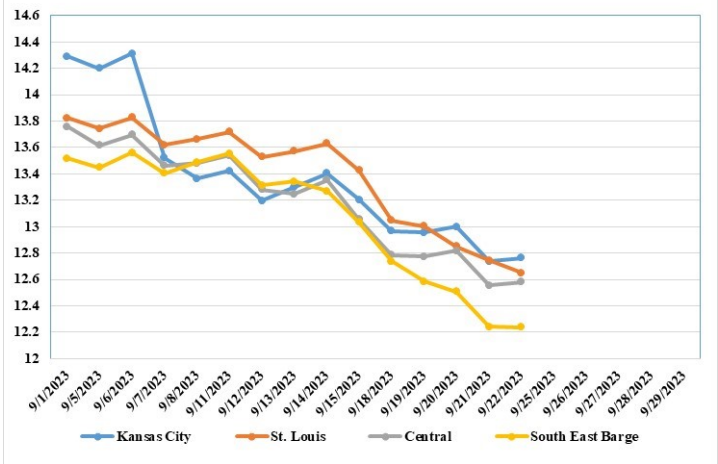
Compared to last week, Soybeans 0.44 to 0.92 lower, Wheat 0.24 to 0.25 lower, Corn 0.34 lower to 0.06 higher, Sorghum 0.01 higher.

Area	#1 Soybeans	#2 Soft Wheat	#2 Corn	#2 Grain Sorghum
Kansas City				
Friday**	12.75-14.00	5.59	4.46-4.76	5.01
Monday	12.52-13.77	5.46	4.42-4.62	4.97
Tuesday	12.51-13.76	5.39	4.46-4.66	5.01
Wednesday	12.55-13.80	5.44	4.52-4.72	5.07
Thursday	12.29-13.54	5.31	4.50-4.65	5.00
Friday	12.31-13.56	5.35	4.52-4.67	5.02
St. Louis				
Friday**	13.42-13.43	5.24-5.29	4.76-4.82	---
Monday	12.97-13.13	4.96-5.16	4.60-4.62	---
Tuesday	12.86-13.16	4.89-5.09	4.46-4.52	---
Wednesday	12.85	4.94-5.14	4.52	---
Thursday	12.60-12.89	4.96-5.01	4.45-4.46	---
Friday	12.58-12.71	5.00-5.05	4.48-4.52	---
Central				
Friday**	12.95-13.10	5.19-5.34	4.66-4.71	---
Monday	12.62-12.87	5.06-5.21	4.52-4.72	---
Tuesday	12.61-12.86	4.99-5.14	4.56-4.66	---
Wednesday	12.65-12.90	5.04-5.19	4.62-4.72	---
Thursday	12.39-12.64	4.91-5.06	4.55-4.65	---
Friday	12.41-12.66	4.95-5.10	4.67	---
S.E. MO				
Friday**	12.84-13.15	---	4.30-4.51	---
Monday	12.63-12.87	---	4.28-4.47	---
Tuesday	12.42-12.71	---	4.09-4.36	---
Wednesday	12.32-12.60	---	4.02-4.37	---
Thursday	12.05-12.43	---	3.95	---
Friday	12.08-12.36	---	4.02-4.32	---

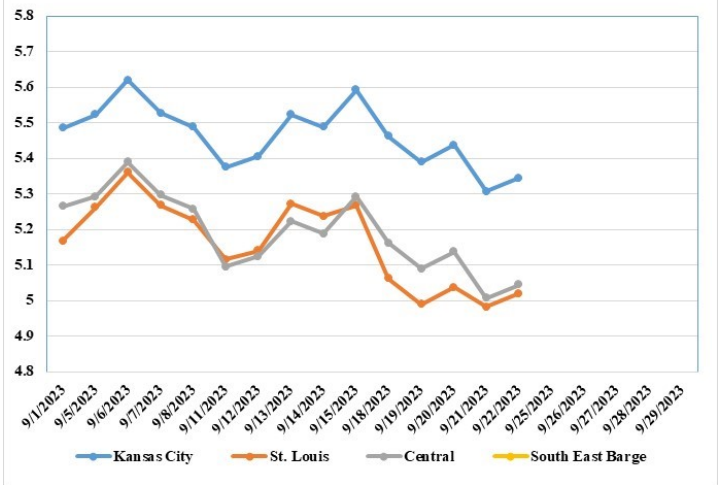
(PRICES PER BUSHEL) *NEW CROP **PREVIOUS WEEK'S PRICES
*Bids calculated using Kansas City, St. Louis, and St. Joseph bids

MONTHLY GRAIN CROP

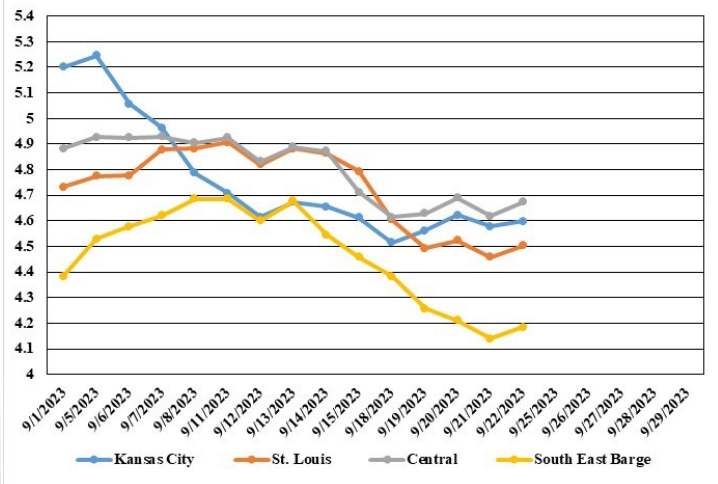
September 2023 Soybean Bids



September 2023 Wheat Bids



September 2023 Corn Bids



*Axis value ranges may be updated to reflect data points.

WHOLESALE FEEDSTUFFS PRICES (DOLLARS PER TON-BULK BASIS)

Area	Soybean Hulls Pellets	Soybean Meal 46.5-48%	Corn Gluten Pellets 21%	Wheat Middlings
Kansas City	192.50	389.70	265.00	173.33
St. Louis	n/a	n/a	240.00	161.67

CATTLE ON FEED

Cattle and calves on feed for the slaughter market in the United States for feedlots with capacity of 1,000 or more head totaled 11.1 million head on September 1, 2023. The inventory was 2 percent below September 1, 2022.

Placements in feedlots during August totaled 2.00 million head, 5 percent below 2022. Net placements were 1.95 million head. During August, placements of cattle and calves weighing less than 600 pounds were 420,000 head, 600-699 pounds were 305,000 head, 700-799 pounds were 455,000 head, 800-899 pounds were 488,000 head, 900-999 pounds were 245,000 head, and 1,000 pounds and greater were 90,000 head.

Marketings of fed cattle during August totaled 1.88 million head, 6 percent below 2022.

Other disappearance totaled 55,000 head during August, 4 percent above 2022.

LIVESTOCK SLAUGHTER

Commercial red meat production for the United States totaled 4.67 billion pounds in August, down 3 percent from the 4.83 billion pounds produced in August 2022.

Beef production, at 2.36 billion pounds, was 6 percent below the previous year. Cattle slaughter totaled 2.89 million head, down 6 percent from August 2022. The average live weight was up 3 pounds from the previous year, at 1,351 pounds.

Veal production totaled 4.2 million pounds, 9 percent below August a year ago. Calf slaughter totaled 26,600 head, down 22 percent from August 2022. The average live weight was up 31 pounds from last year, at 273 pounds.

Pork production totaled 2.29 billion pounds, down slightly from the previous year. Hog slaughter totaled 11.1 million head, up 1 percent from August 2022. The average live weight was down 4 pounds from the previous year, at 278 pounds.

Lamb and mutton production, at 10.5 million pounds, was down 10 percent from August 2022. Sheep slaughter totaled 183,800 head, 1 percent above last year. The average live weight was 113 pounds, down 14 pounds from August a year ago.

January to August 2023 commercial red meat production was 36.1 billion pounds, down 2 percent from 2022. Accumulated beef production was down 4 percent from last year, veal was down 11 percent, pork was up 1 percent from last year, and lamb and mutton production was down 2 percent.

MISSOURI CROP PROGRESS AND CONDITION

	Week Ending			2018-2022 Average
	09/17/23	09/10/23	09/17/22	
Corn dented	97	94	95	94
Corn mature	70	51	61	61
Corn harvested	19	9	10	14
Soybeans dropping leaves	38	17	25	18
Cotton bolls opening	39	34	52	56
Rice harvested	27	14	13	20
Winter wheat planted	2	1	-	-
Alfalfa hay 3rd cutting	93	90	94	92

MISSOURI WEEKLY HAY SUMMARY 09/21/23

Another week of mostly dry weather around the state, although some measurable rainfall was reported in southwest and south central parts of the state. Drought conditions remain mostly steady with west central still finding no relief and remains in D3 or extreme drought conditions. The lack of moisture has allowed for a quick start to grain harvest. Corn harvest is already a quarter of the way done. Haying has slowed down quite a bit now as many have baled what they had for a fall harvest and those in grain areas have turned attention to combines and parked hay equipment. Hay prices are steady. The overall supply of hay is light to moderate and demand is moderate. The Missouri Department of Agriculture has a hay directory visit <http://mda.mo.gov/abd/haydirectory/> for listings of hay <http://agebb.missouri.edu/haylst/>
 Alfalfa - Supreme 250.00-300.00, small square 10.00-15.00 per bale
 Alfalfa - Premium 200.00-250.00
 Alfalfa - Good 150.00-200.00, small square 5.00-10.00 per bale
 Alfalfa - Fair 125.00-150.00
 Alfalfa/grass mix - Good/Premium small square 5.00-10.00 per bale
 Mixed grass - Good/Premium 150.00-225.00
 Mixed grass - Fair/Good 100.00-175.00, small square 5.00-8.00 per bale
 Mixed grass - Fair 50.00-100.00 per large round bale
 Wheat straw - 4.00-7.00 per small square bale

Please Note: The above volumes (tonnage, acres, and bales) listed are for confirmed trades only, it does not include estimated volume (tonnage) for bids or offers to the trade. List your hay for sale at: [Hay Listing Online Form](#). Explanation of Hay Quality Guidelines: [Hay Quality Designation Guidelines](#). Glossary of Terms: [Livestock, Poultry, & Grain Hay Terms](#)

MISSOURI WEEKLY SHEEP/GOAT AUCTION SUMMARY

Receipts: 3,943 Week Ago: 1,296 Last Year: 1,657

SHEEP: Feeder Lambs: hair Small and Medium 1-2 30-40 lbs 240.00-290.00; 40-50 lbs 210.00-280.00; 50 lbs 200.00-212.50.

Slaughter lambs Choice and Prime 1-3 w/s pkg 73 lbs 195.00; pkg 83 lbs 177.50. Choice and Prime 1-3 hair 50-60 lbs 225.00-270.00; 60-80 lbs 185.00-242.50; 80-90 lbs 170.00-202.50; 90-100 lbs 130.00-160.00. Choice 1-3 hair 50-60 lbs 175.00-225.00; 60-70 lbs 190.00-207.50; 70-80 lbs 150.00-185.00; 80-90 lbs 165.00-177.50; 90-10 lbs 120.00-137.50. Good 1-2 pkg 69 lbs 170.00; pkg 104 lbs 105.00.

Slaughter ewes Good 2-3 pkg 215 lbs 85.00. Good 2-3 hair 65-150 lbs 80.00-105.00. Good 2-3 hair 90-105 lbs 95.00-110.00. Utility and Good 1-3 hair 80-175 lbs 70.00-90.00. Utility and Good 1-3 hair 90-130 lbs 80.00-112.50. Cull and Utility 1-2 80-130 lbs 40.00-75.00. Bucks 1-2 hair 95-145 lbs 95.00-135.00.

Replacement ewes Small and Medium 1-2 hair 2-4 yrs 129 lbs exp 115.00. Small and Medium 1-2 hair 1-2 yrs 100 lbs exp 170.00/hd; 2-4 yrs 110-145 lbs exp 140.00-170.00/hd; 2-4 yrs 130 lbs fall 160.00/hd; 4-6 yrs 105 lbs exp 115.00/hd. Hair bucks Small and Medium 1-2 <1 yrs 95 lbs 230.00.

GOATS: Feeder Kids: Selection 1 20-50 lbs 265.00-360.00. Selection 2 30-40 lbs 215.00-270.00; 40-55 lbs 195.00-285.00. Selection 3 35-45 lbs 115.00-205.00; pygmies 150.00-175.00. Wether kids Selection 1 22 hd 46 lbs 280.00.

Slaughter kids Selection 1 50-75 lbs 250.00-290.00. Selection 2 50-85 lbs 180.00-255.00. Slaughter nannies/does Selection 1-2 60-95 lbs 110.00-130.00; 100-150 lbs 80.00-140.00; 150-170 lbs 97.50-120.00. Selection 1-2 80-110 lbs 80.00-130.00/hd. Slaughter bucks/billies Selection 1-2 70-150 lbs 140.00-215.00, pygmies 140.00-145.00. Wethers Selection 1-2 70-80 lbs 235.00-300.00; 90-140 lbs 300.00-330.00.

Replacement nannies/does Selection 1-2 1-2 yrs 58 lbs exp 250.00; 60-70 lbs 190.00-192.50; 2-4 yrs 40-55 lbs exp 185.00-220.00. Selection 1-2 1-2 yrs 78 lbs exp 170.00/hd; 1-2 yrs 80 lbs exp 135.00/hd; 1-2 yrs 110-130 lbs exp 185.00-300.00/hd; 1-2 yrs open 175.00/hd; 2-4 yrs 122 lbs exp 160.00/hd.

Explanatory Notes: Stage - Represents estimated lambing/kidding period (Open, Exp=exposed, Bred, Fall = Sep-Nov, Win = Dec-Feb, Spr = Mar-May, Sum=Jun-Aug; w/s = woolled and shorn; /hd = per head; /fam=per family
 All price CWT unless otherwise noted.

MISSOURI DROUGHT MONITOR

Date	None	D0	D1	D2	D3	D4
09/19/23	20.71	24.67	27.51	16.40	10.71	0
09/12/23	21.39	24.61	26.89	16.40	10.71	0
09/20/22	26.89	41.49	23.13	5.83	2.66	0

Reflects percentage of Missouri impacted by drought. D0 Abnormally Dry; D1 Moderate Drought; D2 Severe Drought; D3 Extreme Drought; D4 Exceptional Drought

NATIONAL DIRECT DELIVERED FEEDER PIG REPORT

09/22/23 Receipts: 115,455 Week ago: 108,260 Year Ago: 73,480
 Early weaned pigs 3.00 higher and feeder pigs 3.00 higher.
 Early weaned pigs 10-12 lbs. basis: Cash 92,799 head 10.00-29.00, weighted average 19.46
 Formula 14,906 head 27.48-5.00 weighted average 42.63
 Feeder pigs 40 pounds basis: Cash 7,750 head 30.00-48.00, weighted average 40.99

NATIONAL DAILY DIRECT PRIOR DAY HOG REPORTS FOR 09/25/23

BARROWS AND GILTS (Carcass Basis): 3,581 head
 Base Carcass Price 72.00-80.00, weighted average 77.57

SOWS (Live Basis): 6,919 head
 300-500 lbs. 16.00-51.25
 Over 500 lbs. 28.00-52.00

MISSOURI WEEKLY DIRECT SLAUGHTER CATTLE REPORT 09/22/23

Weekly Receipts: Week ago: 200 Year ago:
 As of Friday morning trade is light to moderate with flat dressed sales 1.00 higher, grid dressed sales 2.00 higher and live sales not well tested.

LIVE STEERS & HEIFERS: **DRESSED STEERS & HEIFERS:**
 2 loads Thu 184.00 FOB 3 loads Thu 293.00 flat

GRADE AND WEIGHT (Grid): 3 loads late last Fri 298.00

Click here for the current [National Crop Progress](#)
 Click here for the current [Missouri Crop Progress](#)
 The current hay directory can be found at: [Hay Directory](#).