

Weekly Market Summary

Published by:
Missouri Department of Agriculture
Ag Business Development Division
Market News Program



Chris Chinn, Director
 Jill Wood, Division Director
 Tony Hancock, Editor
<http://www.ams.usda.gov/marketnews.htm>
<http://www.ams.usda.gov/marketnews.htm>

Michael L. Parson, Governor

Volume XLIII, Number 39 ♦ P.O. Box 630, Jefferson City, MO 65102 ♦ (573) 751-4211 ♦ Mon, Oct 2, 2023

MISSOURI WEEKLY FEEDER CATTLE WEIGHTED AVERAGE REPORT

Receipts: 22,931 Week ago: 23,438 Year ago: 24,574
 Steers and Heifers Medium and Large 1—Weighted average weights and prices

STEERS: Medium and Large 1

276 lbs. 341.53 473 lbs. 308.97 669 lbs. 270.16 874 lbs. 243.07
 320 lbs. 320.54 524 lbs. 299.30 720 lbs. 264.57 904 lbs. 243.19
 370 lbs. 326.86 578 lbs. 293.58 772 lbs. 259.14 997 lbs. 226.00
 425 lbs. 318.84 618 lbs. 280.79 834 lbs. 248.48 1139 lbs. 185.25

HEIFERS: Medium and Large 1

275 lbs. 268.90 477 lbs. 274.60 665 lbs. 253.99 905 lbs. 220.15
 325 lbs. 277.46 526 lbs. 265.14 731 lbs. 247.56
 378 lbs. 279.95 571 lbs. 261.90 767 lbs. 240.40
 426 lbs. 278.33 628 lbs. 258.16 818 lbs. 229.29

MISSOURI STEER (HEIFER) STOCKER FORMULA 10/02/2023

Monday's Missouri Stocker formula consists of **3906 (4068)** head with a weighted average weight of **539.96 (536.49)** lbs. and a price value of **284.24 (256.14)**, 2.61 lower (0.02 lower) than last week.

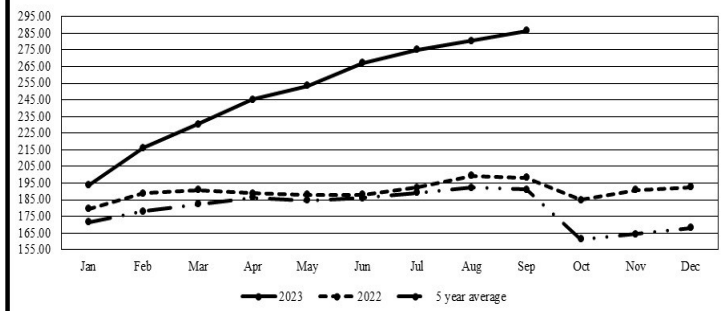
This a rolling seven day calculated weighted value which combines all Feeder Steers reported by MDA/USDA Market News Service weighing from 400-649 lbs. in the Medium and Large 1 and Medium and Large 1-2 frame and muscle classifications, including all comment cattle except Brahman X. Heifer values are in parentheses.

MISSOURI WEEKLY CATTLE AUCTION SUMMARY

Compared to last week, feeders under 650 lbs. sold steady to mostly 5.00 lower, over 650 lbs. were mostly steady. The supply was moderate and becoming more calves each week although there was a significant number of full loads of 8 weight steers in the offering. Demand was light to moderate and varied depending on health risk associated with each consignment. Producers bringing unweaned or unvaccinated calves to market continue to see sharp discounts and leave money on the table, although at current price levels many of them still seeing bigger checks than they are accustomed to. Overall it was a tough week for all sectors of the agriculture industry. Factors outside of the industry played a big part in pushing markets lower with concerns about politics and especially the state of the economy making buyers a bit less interested in pushing prices any higher at the moment. Grain harvest is in full swing which has shifted the focus of most farmer feeders to the combines and not the auction arena for the time being. For the first time in just over a month the state wide weight average price for light five weight steers fell just a few cents below the 300.00 mark this week. As mentioned earlier there was many loads of yearlings in the offering this week. 15 loads of steers from about 825-875 lbs. sold from 242.00-247.00. A couple other loads of really fancy kind sold up to 255.00 and some loads of plainer kind were in the upper 230's but it was fairly well established a load of good quality 850 lb. steers was worth about 245.00. A couple of loads of high quality light 6 weight heifers this week sold at 282.75 and 285.75. Boxed beef cutouts were lower for another week with the choice closed at 300.78, down 2.55 and select closed at 276.04, down 4.39 compared to last Friday. Negotiated feedlot sales as of the Friday afternoon was right at 65,500 head. Live sales were reported from 183.00-184.00 and dressed sales were reported at 290.00. Missouri Stocker formula consists of 3906 head with a weighted average weight of 539.96 lbs. and a price value of 284.24, 2.61 lower than a week ago. The steer/heifer spread is 28.10.

The Weekly Market Summary, as well as historical summaries, are available on our website <https://agmarketnews.mo.gov/summaries>
 Market News Hotline: 1-573-522-9244

Missouri Stocker Formula - Steers

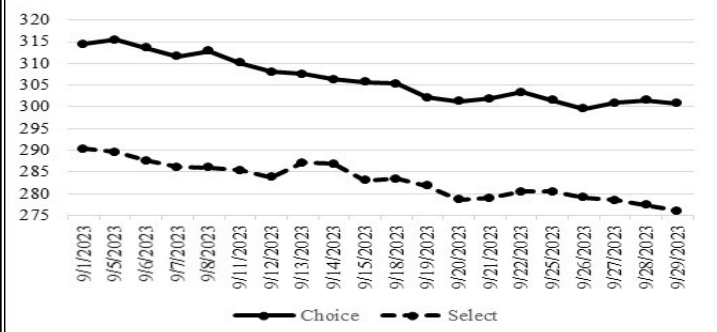


*Graph is updated the first Monday of each month. Axis value ranges may be updated to reflect data points.

NATIONAL BOXED BEEF CUTOUT/BOXED BEEF CUTS

<u>DATE</u>	<u>CHOICE</u>	<u>SELECT</u>	<u>TOTAL LOADS</u>
09/25	301.48	280.45	94
09/26	299.54	279.10	157
09/27	300.95	278.51	149
09/28	301.51	277.44	149
09/29	300.78	276.04	131
5 Day Simple Average	300.85	278.31	

Boxed Beef Cuts September 2023



*Axis value ranges may be updated to reflect data points.

WEEKLY LIVESTOCK SLAUGHTER 09/30/23

	<u>CATTLE</u>	<u>HOGS</u>	<u>SHEEP</u>
Week to Date:	612,000	2,604,000	33,000
Last Week:	625,000	2,537,000	32,000
Last Year:	667,000	2,485,000	34,000

SOUTHWEST MISSOURI WEEKLY SUMMARY

(Joplin and Springfield)

Receipts: 8,801 Week ago: 10,420 Year ago: 8,861

Compared to last week, steers 4.00 to 10.00 lower, with yearling steers steady early week and heifers steady to 4.00 lower. Slaughter cows steady to 5.00 lower and slaughter bulls steady to 2.00 lower.

FEEDER STEERS:

Medium and Large 1

300-400 lbs.	297.50-310.00
400-500 lbs.	280.00-320.00
500-600 lbs.	266.00-310.00
600-700 lbs.	250.00-295.00
700-800 lbs.	245.00-268.00
800-900 lbs.	242.00-255.00
900-1000 lbs.	226.00-230.00

FEEDER HEIFERS:

Medium and Large 1

300-400 lbs.	292.00-290.00
400-500 lbs.	255.00-282.00
500-600 lbs.	234.00-271.00
600-700 lbs.	230.00-264.00
700-800 lbs.	225.50-243.00
800-900 lbs.	222.00-236.00
900-1000 lbs.	211.00-226.00

FEEDER HOLSTEIN STEERS

Large 3

450-500 lbs.	165.00-182.00
500-600 lbs.	170.00-186.00
600-700 lbs.	179.00-181.50
700-800 lbs.	140.00-172.00

SLAUGHTER COWS: Breaking

and Boning (70-85% lean) 87.50-115.00, high dressing 106.00-124.00; low dressing 75.00-102.00. Lean (85-90%) 85.00-99.00

SLAUGHTER BULLS: Yield

Grade 1-2 1160-2620 lbs. 109.00-134.00; high dressing 123.00-134.00; low dressing 89.00-117.50

BRED COWS: Medium and Large

1-2 2-8 yrs 1350-1605 lbs 2nd and 3rd stage 1875.00-2150.00 per head

COW & CALF PAIRS: Medium

and Large 1-2 2-8 yrs 1070-1320 lbs baby to 150 lbs 1725.00-2400.00 per pair

BRED HEIFERS: Medium and

Large 1-2 less than 2 yrs pkg 958 lbs 1st stage 1870.00 per head.

SOUTH CENTRAL MISSOURI WEEKLY SUMMARY

(West Plains, Phillipsburg)

Receipts: 5,356 Week ago: 5,347 Year Ago: 3,524

Compared to last week, feeder calves uneven from 5.00 lower to 10.00 higher, yearlings steady to 7.00 lower. Slaughter cows and 2.00 to 5.00 lower and slaughter bulls steady to 5.00 lower.

FEEDER STEERS:

Medium and Large 1

300-400 lbs.	313.00-332.50
400-500 lbs.	290.00-334.00
500-600 lbs.	275.00-306.00
600-700 lbs.	259.00-288.00
700-800 lbs.	247.50-263.00
800-900 lbs.	234.00-238.00

FEEDER HEIFERS:

Medium and Large 1

300-400 lbs.	258.00-269.00
400-500 lbs.	252.00-275.00
500-600 lbs.	250.00-270.00
600-700 lbs.	239.00-256.00
700-800 lbs.	230.00-233.50

FEEDER HOLSTEIN STEERS

Large 3

Scarce

Scarce

SLAUGHTER COWS: Breaking

and Boning (70-85% lean) 95.00-106.00, high dressing 104.00-118.00; low dressing 76.00-97.50. Lean (85-90%) 80.00-96.00

SLAUGHTER BULLS: Yield

Grade 1-2 1255-2015 lbs. 110.00-130.00; high dressing 120.00-149.00; low dressing 80.00-119.00

BRED COWS: Medium and

Large 1 2-8 yrs 1195-1378 lbs 2nd to 3rd stage 1650.00-1775.00. Medium and Large 1-2 2-8 yrs 1050-1505 lbs 1250.00-1800.00, 1st stage 1485.00 per head

COW & CALF PAIRS: Medium

and Large 1-2 2-8 yrs 1192-1370 lbs with 150-300 lb calves 1725.00-2050.00 per pair

BRED HEIFERS: Medium and

Large 1-2 <2 yrs 975 lbs 1st to 3rd stage 1500.00 per head

WEST CENTRAL MISSOURI WEEKLY SUMMARY

(Kingsville, Windsor, Butler)

Receipts: 4,393 Week ago: 4,408 Year ago: 6,149

Compared to last week, steer and heifer calves steady to 10.00 lower, yearlings steady. Slaughter cows 1.00 to 3.00 lower.

FEEDER STEERS:

Medium and Large 1

300-400 lbs.	297.50-334.00
400-500 lbs.	295.00-340.00
500-600 lbs.	282.00-323.00
600-700 lbs.	254.00-295.00
700-800 lbs.	254.50-275.75
800-900 lbs.	249.00-260.00
18 hd 1139 lbs.	185.25

FEEDER HEIFERS:

Medium and Large 1

300-400 lbs.	275.00-300.00
400-500 lbs.	248.00-297.00
500-600 lbs.	246.00-285.00
600-700 lbs.	258.00-279.75
700-800 lbs.	223.75-251.00
Lot 842 lbs.	218.50
Pkg 903 lbs.	219.00

SLAUGHTER BULLS: Yield

Grade 1-2 1255-2430 lbs 113.50-131.50; high dressing 128.50-137.50, low dressing 103.00-115.00

SLAUGHTER COWS: Breaking

and Boning (70-85% lean) 90.00-117.00, high dressing 102.00-120.00 low dressing 85.00-105.00. Lean (85-90%) 70.00-97.00

BRED COWS: Medium and Large

1-2 2-8 yrs 1040-1290 lbs 2nd to 3rd stage 1350.00-1625.00, 1st stage 1585.00 per head

COW & CALF PAIRS: Medium

and Large 1-2 5-8 yrs 1150-1400 lbs with 150-300 lb calves 1785.00-2200.00 per pair

NORTHEAST MISSOURI WEEKLY SUMMARY

(Bowling Green, Kingdom City, Palmyra)

Receipts: 3,008 Week ago: 3,190 Year ago: 4,508

Compared to last week, steers under 700 lbs mostly 5.00 to 8.00 lower, spots 10.00 lower, over 700 lbs steady to firm. Heifers under 600 lbs steady to firm, over 600 lbs mostly pot load lots sold with a firm undertone. Slaughter cows steady.

FEEDER STEERS:

Medium and Large 1

400-500 lbs.	299.00-328.00
500-600 lbs.	283.50-319.00
600-700 lbs.	266.25-294.00
700-800 lbs.	242.00-279.75

FEEDER HEIFERS:

Medium and Large 1

400-500 lbs.	269.00-312.50
500-600 lbs.	264.00-279.00
600-650 lbs.	248.00-279.00
Pkg 706 lbs.	258.00

SLAUGHTER BULLS: Yield

Grade 1-2 1350-2480 lbs 123.00-146.50; high dressing few 138.00-154.50; low dressing 109.00-120.00.

SLAUGHTER COWS: Breaking

and Boning, (70-85% lean) 102.00-118.00; high dressing 111.50-126.00; low dressing 91.00-109.00. Lean (85-90%) 92.00-101.50.

SLAUGHTER STEERS: Choice 2

-3 182.50-184.50. Select and Choice 1-3 176.50.

SLAUGHTER HEIFERS: Choice

2-3 182.25-185.25. Select 1-2 171.00-174.50.

BRED COWS: Scarce

COW/CALF PAIRS: Scarce

NORTH CENTRAL MISSOURI WEEKLY SUMMARY

(Macon, Unionville, Green City, New Cambria)

Receipts: 2,492 Week ago: 1,120 Year ago: 1,305

Compared to the most recent sales, steers and heifers mostly steady to 5.00 lower, with some spots of yearlings steady to firm. Slaughter cows steady to 3.00 higher.

*Some sale barns on a bi-weekly schedule and may not have a sale each week.

FEEDER STEERS:

Medium and Large 1

400-500 lbs.	300.00-340.00
500-600 lbs.	281.00-297.50
600-700 lbs.	267.50-274.75
700-750 lbs.	267.00-278.00
800-900 lbs.	245.75-256.00
Load 903 lbs.	245.75

FEEDER HEIFERS:

Medium and Large 1

450-500 lbs.	278.00-290.00
500-550 lbs.	258.00-275.75
600-700 lbs.	246.25-267.00
700-800 lbs.	253.10-253.85
Pkg 837 lbs.	230.00

SLAUGHTER BULLS: Yield

Grade 1-2 indiv 1950 lbs 127.50, few high dressing 140.00-146.00

SLAUGHTER COWS: Breaking

and Boning, (70-85% lean) 99.50-116.00. high dressing 114.00-124.00 Lean (85-90%) 85.00-99.50

BRED COWS: Scarce

COW & CALF PAIRS: Scarce

SOUTHEAST MISSOURI WEEKLY SUMMARY

(Jackson and Farmington)

Receipts: 1082 Week ago: 1757 Year ago: 1630
 Compared to last week, steers and heifers very uneven from 10.00 low-
 er to 3.00 higher. Slaughter cows and bulls steady to 5.00 lower.

FEEDER STEERS:
 Medium and Large 1

300-400 lbs. 282.50-335.00
 400-500 lbs. 285.00-302.50
 500-600 lbs. 260.00-292.50
 600-700 lbs. 240.00-270.00
 700-800 lbs. 225.00-247.00

FEEDER HEIFERS:
 Medium and Large 1

300-400 lbs. 250.00-292.00
 400-500 lbs. 247.00-282.00
 500-600 lbs. 234.00-275.00
 600-700 lbs. 220.00-242.00

SLAUGHTER BULLS: Yield
 Grade 1-2 1110-1670 lbs. 90.00-
 105.50; high dressing 110.00-126.00

SLAUGHTER COWS: Breaking
 and Boning (75-85% lean) 85.00-
 98.00; high dressing 95.00-
 119.00. Lean (85-90% lean)
 70.00-87.00

BRED COWS: Medium and Large 2
 2-8 yrs 1190-1200 lbs 2nd stage
 1200.00-1675.00 per head

COW & CALF PAIRS: Scarce

EAST CENTRAL MISSOURI WEEKLY SUMMARY

(Cuba, Vienna)

Receipts: 1,900 Week ago: 1,272 Year ago: 2,417
 Compared to last week, steers steady and heifers steady to 4.00 lower.
 Slaughter cows 3.00 to 9.00 lower.

FEEDER STEERS:
 Medium and Large 1

400-500 lbs. 292.50-330.00
 500-600 lbs. 275.00-316.00
 600-700 lbs. 269.50-299.00
 700-800 lbs. 258.50-267.00

FEEDER HEIFERS:
 Medium and Large 1

400-500 lbs. 257.00-286.00
 500-600 lbs. 253.00-280.00
 600-700 lbs. 237.75-272.50
 700-800 lbs. 235.00-253.50

SLAUGHTER BULLS: Yield
 Grade 1-2 1425-2480 lbs 112.00-
 123.00; high dressing 133.00-
 135.00

SLAUGHTER COWS: Breaking
 and Boning, (70-85% lean) 93.50-
 105.00; high dressing 104.50-
 110.50 Lean (85-90%) 82.50-94.00

BRED COWS: Medium and
 Large 1-2 2-8 yrs 1190-1565 lbs
 2nd and 3rd stage 2150.00-
 2275.00 per head.

COW & CALF PAIRS: Medium
 and Large 1 over 8 yrs 1400 lbs
 with baby to 150 lb calves 2235.00
 per pair

NORTHWEST MISSOURI WEEKLY SUMMARY

(Tina)

Receipts: 510 Week Ago: 1,365 Year Ago: 1,428
 Compared to last week, steers and heifers steady to 5.00 higher on a
 light test. Slaughter cows and bulls 2.00 to 5.00 lower.

FEEDER STEERS:
 Medium and Large 1

Pkg 342 lbs. 345.00
 400-500 lbs. 320.50-327.00
 19 hd 537 lbs. 314.25

FEEDER HEIFERS:
 Medium and Large 1

15 hd 391 lbs. 291.00
 Pkg 421 lbs. 278.00
 500-550 lbs. 269.00
 Pkg 612 lbs. 264.00

SLAUGHTER BULLS: Yield
 Grade 1-2 1450-2010 lbs 119.50-
 128.00, high dressing ind 133.00;
 couple low dressing 109.00-
 114.50.

SLAUGHTER COWS: Breaking
 and Boning, (70-85% lean) 89.00-
 112.00; high dressing 114.50-
 119.00. Lean (85-90%) 90.00-
 109.00

BRED COWS: Scarce

COW & CALF PAIRS: Scarce

AFTERNOON NATIONAL SLAUGHTER CATTLE REVIEW

Thus far for Friday in the Texas Panhandle negotiated cash trade has been
 slow on light demand. In the Kansas negotiated cash trade inactive on
 light demand. The last reportable market in the Southern Plains was Tues-
 day with live FOB purchases at 183.00. In Nebraska negotiated cash trade
 has been mostly inactive on light demand. In the Western Cornbelt negoti-
 ated cash trade has been slow on light demand. The last reportable market
 in Nebraska and the Western Cornbelt was Wednesday live FOB purchas-
 es at 184.00, with dressed delivered purchases at 290.00.

Negotiated Cash Sales:					
Confirmed:	5,612	Week Ago:	5,869	Year Ago:	4,755
Week to date:	65,543	Week Ago:	74,588	Year Ago:	97,384

Live Basis	Steers	Heifers
Over 80% Choice	184.00-185.00, avg 184.28	181.00-185.00, avg 183.97
65-80% Choice	-	-
35-65% Choice	181.00	-
0-35% Choice	-	-
Total All Grades	181.00-185.00, avg 184.19	181.00-185.00, avg 183.97
Dressed Basis		
Over 80% Choice	288.00-292.00, avg 290.56	-
65-80% Choice	-	-
35-65% Choice	-	-
0-35% Choice	-	-
Total All Grades	288.00-292.00, avg 290.56	-

All Beef Type Steers/Heifers	Head	Avg Wt	Price Range	Wtd Avg
Live FOB	3,758	1405.8	181.00-186.00	183.80
Live Del	852	1451.5	185.00-186.00	185.52
Dressed Del	967	912.5	288.00-295.00	290.47
Dressed FOB	-	-	-	-

WEEKLY COMMODITY FUTURES TRENDS

Compared to last week, 2.72 to 3.50 lower, Lean Hogs 0.35 to 1.32
 lower, except Feb 0.10 higher, Feeder Cattle 6.68 to 8.62 lower.

Daily Futures Closes

	Mon.	Tues.	Wed.	Thu.	Fri.
Cattle					
Oct	186.97	184.80	184.90	186.50	184.20
Dec	191.22	188.47	188.17	190.42	187.92
Feb	195.90	193.05	192.40	194.62	192.50
Apr	199.07	196.37	195.47	197.42	195.50
Jun	192.62	190.25	189.37	191.37	189.70
Lean Hogs					
Oct	81.52	81.62	82.12	83.95	80.20
Dec	72.52	72.35	72.77	75.52	71.77
Feb	76.10	75.75	76.27	78.60	75.45
Apr	81.90	81.37	81.70	83.47	80.92
May	86.77	86.27	86.67	88.30	85.95
Fdr Cat					
Sep	253.87	252.60	251.52	252.32	—
Oct	258.82	253.87	252.25	254.72	252.47
Nov	262.70	256.87	254.80	257.57	254.90
Jan	265.60	260.10	257.40	260.05	258.05
Mar	268.07	262.95	260.60	263.12	261.27
Milk					
Sep	18.42	18.38	18.38	18.38	18.38
Oct	17.29	16.98	16.80	16.71	16.88
Nov	17.40	17.11	16.95	16.90	17.17

WEEKLY COMMODITY GRAIN FUTURES TRENDS

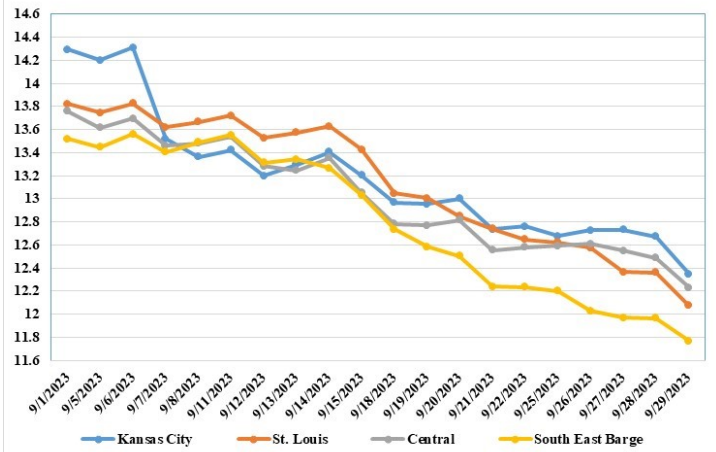
Compared to last week, Soybeans 0.06 to 0.21 lower, Wheat 0.17 to 0.38 lower, Corn steady to 0.01 lower, KC Wheat 0.26 to 0.48 lower, Soybean Meal 1.30 to 12.30 lower, except 0.70 higher.

Daily Grain Futures Closes

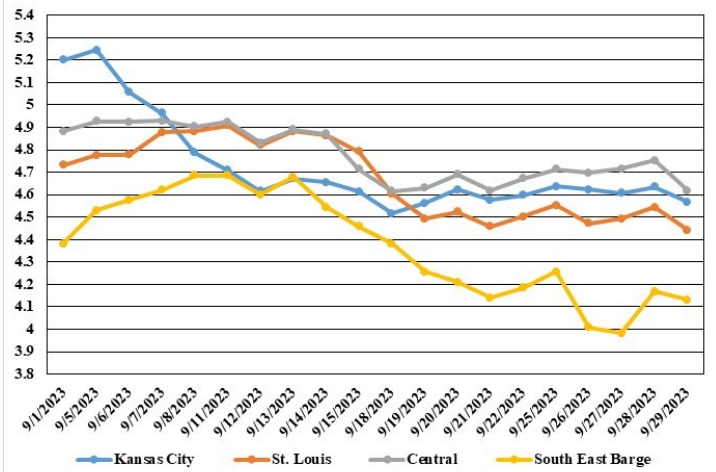
	Mon.	Tues.	Wed.	Thu.	Fri.
Soybeans					
Nov	1297 3/4	1302 3/4	1303 1/4	1300 1/2	1275
Jan	1315 1/2	1321	1323	1319 1/4	1294 1/2
Mar	1327	1332 3/4	1335 3/4	1331 1/2	1310 1/4
May	1335	1340 3/4	1344 3/4	1340 3/4	1322
Jul	1336 3/4	1342 1/4	1347 1/4	1343 1/4	1327 1/4
Wheat					
Dec	589	589	579 1/2	578 3/4	541 1/2
Mar	615 1/2	616 1/4	607 1/4	606 1/2	573 1/2
May	632 3/4	633 3/4	626	624 3/4	594 3/4
Jul	642 3/4	644 1/4	637 3/4	636 1/4	612 1/4
Sep	654 3/4	657	651 1/4	649	628 3/4
Corn					
Dec	481 1/4	479 3/4	483 1/4	488 1/2	476 3/4
Mar	495 3/4	494 1/2	498 1/4	503 1/4	491 3/4
May	504 1/4	502 3/4	506 3/4	511 3/4	500 1/2
Jul	508 1/2	507 1/4	511 1/2	516 1/4	505 1/2
Sep	506	505	508 3/4	512	503 1/4
KC Wheat					
Dec	714 1/2	710 1/2	694 1/2	685	663 3/4
Mar	721 1/4	717 3/4	702	693	672 1/4
May	725 3/4	722 3/4	707 1/2	699	678 3/4
Jul	714 1/2	713 1/4	701 1/2	694 1/4	680 1/2
Sep	718 1/2	718 1/4	708	701 1/2	689 1/2
SB Meal					
Oct	392.00	394.00	390.10	392.40	375.90
Dec	389.80	392.70	389.10	391.50	381.20
Jan	386.30	388.90	385.30	397.90	379.40
Mar	380.10	382.30	378.60	381.30	375.00
May	376.10	378.30	375.10	378.10	373.10

MONTHLY GRAIN CROP

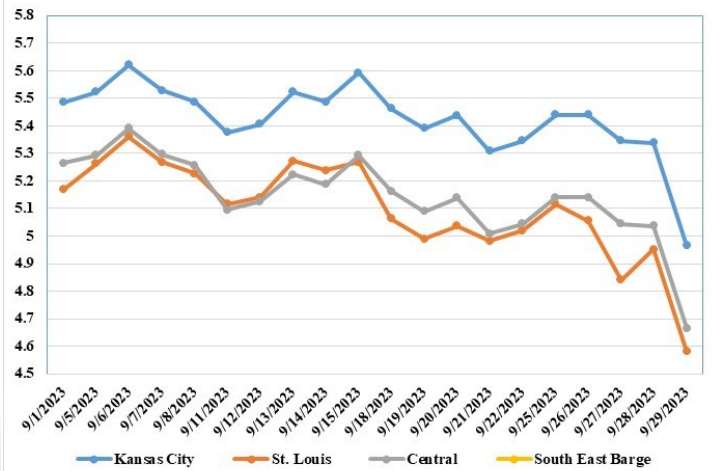
September 2023 Soybean Bids



September 2023 Corn Bids



September 2023 Wheat Bids



*Axis value ranges may be updated to reflect data points.

MISSOURI GRAIN WEEKLY TRENDS

Compared to last week, Soybeans 0.21 to 0.81 lower, Wheat 0.38 to 0.50 lower, Corn 0.16 lower to 0.05 higher, Sorghum steady.

Area	#1 Soybeans	#2 Soft Wheat	#2 Corn	#2 Grain Sorghum
Kansas City				
Friday**	12.31-13.56	5.35	4.52-4.67	5.02
Monday	12.33-13.28	5.44	4.56-4.71	5.06
Tuesday	12.38-13.33	5.44	4.55-4.70	5.05
Wednesday	12.38-13.33	5.35	4.58-4.63	5.08
Thursday	12.35-13.20	5.33	4.58-4.68	5.13
Friday	12.10-12.75	4.97	4.52-4.62	5.02
St. Louis				
Friday**	12.58-12.71	5.00-5.05	4.48-4.52	---
Monday	12.62-12.63	5.09-5.14	4.54-4.56	---
Tuesday	12.48-12.68	4.97-5.14	4.40-4.55	---
Wednesday	12.33-12.40	4.64-5.05	4.35-4.63	---
Thursday	12.21-12.50	4.86-5.03	4.40-4.68	---
Friday	12.00-12.15	4.50-4.67	4.32-4.57	---
Central				
Friday**	12.41-12.66	4.95-5.10	4.67	---
Monday	12.43-12.68	5.04-5.19	4.71	---
Tuesday	12.48-12.73	5.04-5.19	4.70	---
Wednesday	12.48-12.63	4.95-5.10	4.68-4.73	---
Thursday	12.45-12.50	4.93-5.08	4.73-4.78	---
Friday	12.20-12.25	4.57-4.72	4.62	---
S.E. MO				
Friday**	12.08-12.36	---	4.02-4.32	---
Monday	12.13-12.28	---	4.16-4.34	---
Tuesday	12.03	---	3.80-4.28	---
Wednesday	11.78-12.24	---	3.83-4.23	---
Thursday	11.75-12.10	---	3.88-4.33	---
Friday	11.75-11.81	---	3.97-4.22	---

WHOLESALE FEEDSTUFFS PRICES (DOLLARS PER TON-BULK BASIS)

Area	Soybean Hulls Pellets	Soybean Meal 46.5-48%	Corn Gluten Pellets 21%	Wheat Middlings
Kansas City	190.00	377.40	262.50	175.00
St. Louis	n/a	n/a	267.50	163.00

(PRICES PER BUSHEL) *NEW CROP **PREVIOUS WEEK'S PRICES
*Bids calculated using Kansas City, St. Louis, and St. Joseph bids

COLD STORAGE

Total natural cheese stocks in refrigerated warehouses on August 31, 2023 were down slightly from the previous month but up 1 percent from August 31, 2022.

Butter stocks were down 12 percent from last month but up 4 percent from a year ago.

Total frozen poultry supplies on August 31, 2023 were down slightly from the previous month but up 1 percent from a year ago. Total stocks of chicken were down 1 percent from the previous month but up slightly from last year. Total pounds of turkey in freezers were up 2 percent from last month and up 2 percent from August 31, 2022.

Total frozen fruit stocks were up 6 percent from last month but down 2 percent from a year ago.

Total frozen vegetable stocks were up 18 percent from last month and up 5 percent from a year ago.

Total red meat supplies in freezers were up 1 percent from the previous month but down 15 percent from last year. Total pounds of beef in freezers were up 3 percent from the previous month but down 18 percent from last year. Frozen pork supplies were up slightly from the previous month but down 13 percent from last year. Stocks of pork bellies were down 28 percent from last month but up 3 percent from last year.

GRAIN STOCKS

Old crop corn stocks in all positions on September 1, 2023 totaled 1.36 billion bushels, down 1 percent from September 1, 2022. Of the total stocks, 605 million bushels are stored on farms, up 19 percent from a year earlier. Off-farm stocks, at 756 million bushels, are down 13 percent from a year ago. The June - August 2023 indicated disappearance is 2.75 billion bushels, compared with 2.97 billion bushels during the same period last year.

Old crop soybeans stored in all positions on September 1, 2023 totaled 268 million bushels, down 2 percent from September 1, 2022. Soybean stocks stored on farms totaled 72.0 million bushels, up 14 percent from a year ago. Off-farm stocks, at 196 million bushels, are down 7 percent from last September. Indicated disappearance for June - August 2023 totaled 528 million bushels, down 24 percent from the same period a year earlier.

MISSOURI WEEKLY SHEEP/GOAT AUCTION SUMMARY

Receipts: 1,162 Week Ago: 3,943 Last Year:

SHEEP: Feeder Lambs: hair Small and Medium 1-2 30-40 lbs 225.00-255.00, fancy 280.00-290.00; 40-50 lbs 205.00-245.00, fancy 265.00. Slaughter lambs Choice and Prime 1-3 w/s 74 lbs 170.00. Good 1-2 w/s pkg 60 lbs 115.00. Choice and Prime 1-3 hair 50-60 lbs 210.00-242.00; 60-75 lbs 184.00-240.00; 80-100 lbs 150.00-178.00; pkg 107 lbs 142.00. Choice 1-3 hair 50-80 lbs 170.00-196.00; pkg 89 lbs 150.00; pkg 103 lbs 142.00. Good 1-2 hair pkg 53 lbs 142.50; pkg 78 lbs 150.00.

Slaughter ewes Good 2-3 pkg 161 lbs 81.00. Utility and Good 1-3 120-160 lbs 69.00-72.00. Good 2-3 hair 87-108 lbs 90.00-115.00. Utility and Good 1-3 hair 100-150 lbs 74.00-86.00. Cull and Utility 1-2 hair pkg 107 lbs 72.00. Bucks 1-2 hair 115-145 lbs 100.00-105.00; 150-220 lbs 96.00-107.50.

Replacement ewes Small and Medium 1-2 1-2 yrs 68 lbs exp 132.00; 2-4 yrs 70-105 lbs exp 125.00-190.00.

GOATS: Feeder Kids: Selection 1 pkg 38 lbs 305.00; pkg 44 lbs 267.00. Selection 2 pkg 25 lbs 200.00; 35-50 lbs 232.00-250.00. Selection 3 pkg 26 lbs 180.00, pygmies 182.00; 30-50 lbs 105.00-185.00, pygmies 150.00-182.00.

Slaughter kids Selection 1 50-60 lbs 250.00-265.00. Selection 2 50-80 lbs 200.00-232.00. Selection 3 pkg 60 lbs 161.00.

Slaughter nannies/does Selection 1-2 pkg 58 lbs 102.00, pygmies 100.00; pkg 65 lbs pygmies 92.00; 80-145 lbs 100.00-124.00, thin 60.00. Slaughter bucks/billies Selection 1-2 80-145 lbs 155.00-215.00. Wethers Selection 1-2 pkg 108 lbs 247.00. Wether kids Selection 2 31 hd 83 lbs 235.00. Wether kids Selection 3 pkg 53 lbs pygmies 180.00.

Replacement nannies/does Selection 1 <1 yrs 65 lbs open 640.00. Selection 1-2 1-2 yrs 83 lbs exp 305.00; 2-4 yrs 67 lbs exp 180.00.

Explanatory Notes: Stage - Represents estimated lambing/kidding period (Open, Exp=exposed, Bred, Fall = Sep-Nov, Win = Dec-Feb, Spr = Mar-May, Sum=Jun-Aug; w/s = woolled and shorn; /hd= per head; /fam=per family All price CWT unless otherwise noted.

MISSOURI CROP PROGRESS AND CONDITION

	Week Ending			2018-2022 Average
	09/24/23	09/17/23	09/24/22	
Corn mature	86	70	72	74
Corn harvested	28	19	18	26
Soybeans dropping leaves	64	38	42	34
Soybeans harvested	4	-	3	3
Cotton bolls opening	71	39	64	72
Cotton harvested	2	-	2	4
Rice harvested	53	27	32	37
Winter wheat planted	2	2	-	1

MISSOURI DROUGHT MONITOR

Date	None	D0	D1	D2	D3	D4
09/26/23	18.08	27.05	27.65	18.18	9.04	0
09/19/23	20.71	24.67	27.51	16.40	10.71	0
09/27/22	18.48	24.93	41.20	10.56	2.91	1.92

Reflects percentage of Missouri impacted by drought. D0 Abnormally Dry; D1 Moderate Drought; D2 Severe Drought; D3 Extreme Drought; D4 Exceptional Drought

NATIONAL DIRECT DELIVERED FEEDER PIG REPORT

09/29/23 Receipts: 92,894 Week ago: 115,455 Year Ago: 60,274 Early weaned pigs 4.00 higher and feeder pigs 1.00 higher. Early weaned pigs 10-12 lbs. basis: Cash 50,524 head 8.00-31.00, weighted average 23.10. Formula 32,610 head 19.46-50.25 weighted average 32.55 Feeder pigs 40 pounds basis: Cash 9,760 head 37.00-50.00, weighted average 42.11

NATIONAL DAILY DIRECT PRIOR DAY HOG REPORTS FOR 09/29/23

BARROWS AND GILTS (Carcass Basis): 2,725 head Base Carcass Price 69.00-77.00, weighted average 74.27

SOWS (Live Basis): 7,081 head
300-500 lbs. 15.00-59.50
Over 500 lbs. 28.91-51.00

MISSOURI WEEKLY DIRECT SLAUGHTER CATTLE REPORT 09/29/23

Weekly Receipts: 520 Week ago: 200 Year ago: 280 As of Friday morning trade is light to moderate with flat dressed sales 2.00 lower, grid dressed sales steady and live sales not well tested.

LIVE STEERS & HEIFERS: 4 loads Thu 185.00 FOB
DRESSED STEERS & HEIFERS: 5 loads Thu 291.00 flat

GRADE AND WEIGHT (Grid): 4 loads Thu 296.00

MISSOURI WEEKLY HAY SUMMARY 09/28/23

Hay business continues to take a back seat for the time being in most of the state as grain harvest is in full swing. Supplies remain light to moderate and although many have worked to acquire anticipated winter feeding needs it would be very unusual for interest not to pick back up once there is a serious chill in the air. Drought conditions worsened slightly once again this week as moisture evades many areas. Average first frost dates are only a few weeks away now so days of any additional grass growth are limited. Hay prices are steady and demand is moderate. The Missouri Department of Agriculture has a hay directory visit <http://mda.mo.gov/abd/haydirectory/> for listings of hay <http://agebb.missouri.edu/haylst/>

Alfalfa - Supreme 250.00-300.00, small square 10.00-15.00 per bale
Alfalfa - Premium 200.00-250.00
Alfalfa - Good 150.00-200.00, small square 5.00-10.00 per bale
Alfalfa - Fair 125.00-150.00
Alfalfa/grass mix - Good/Premium small square 5.00-10.00 per bale
Mixed grass - Good/Premium 150.00-225.00
Mixed grass - Fair/Good 100.00-175.00, small square 5.00-8.00 per bale
Mixed grass - Fair 50.00-100.00 per large round bale
Wheat straw - 4.00-7.00 per small square bale

Please Note: The above volumes (tonnage, acres, and bales) listed are for confirmed trades only, it does not include estimated volume (tonnage) for bids or offers to the trade. List your hay for sale at: [Hay Listing Online Form](#). Explanation of Hay Quality Guidelines: [Hay Quality Designation Guidelines](#). Glossary of Terms: [Livestock, Poultry, & Grain Hay Terms](#)

Click here for the current [National Crop Progress](#)
Click here for the current [Missouri Crop Progress](#)
The current hay directory can be found at: [Hay Directory](#).