

Weekly Market Summary

Published by:
Missouri Department of Agriculture
Ag Business Development Division
Market News Program



Chris Chinn, Director
Jill Wood, Division Director
Tony Hancock, Editor
<http://www.ams.usda.gov/marketnews.htm>
<http://www.ams.usda.gov/marketnews.htm>

Michael L. Parson, Governor

Volume XLIII, Number 42 ♦ P.O. Box 630, Jefferson City, MO 65102 ♦ (573) 751-4211 ♦ Mon, Oct 23, 2023

MISSOURI WEEKLY FEEDER CATTLE WEIGHTED AVERAGE REPORT

Receipts: 19,809 Week ago: 16,962 Year ago: 19,002
Steers and Heifers Medium and Large 1—Weighted average weights and prices

STEERS: Medium and Large 1

281 lbs. 301.60	478 lbs. 306.76	677 lbs. 265.30	875 lbs. 239.15
331 lbs. 326.92	522 lbs. 295.73	725 lbs. 258.16	932 lbs. 232.97
376 lbs. 326.67	574 lbs. 283.82	766 lbs. 254.26	971 lbs. 223.04
426 lbs. 311.97	625 lbs. 272.99	814 lbs. 247.18	1021 lbs. 217.00

HEIFERS: Medium and Large 1

326 lbs. 269.35	522 lbs. 254.32	733 lbs. 243.61	925 lbs. 205.39
379 lbs. 279.80	575 lbs. 247.66	760 lbs. 237.22	1014 lbs. 188.13
429 lbs. 264.15	616 lbs. 242.17	823 lbs. 227.15	
475 lbs. 261.09	675 lbs. 242.71	871 lbs. 215.10	

MISSOURI STEER (HEIFER) STOCKER FORMULA 10/23/2023

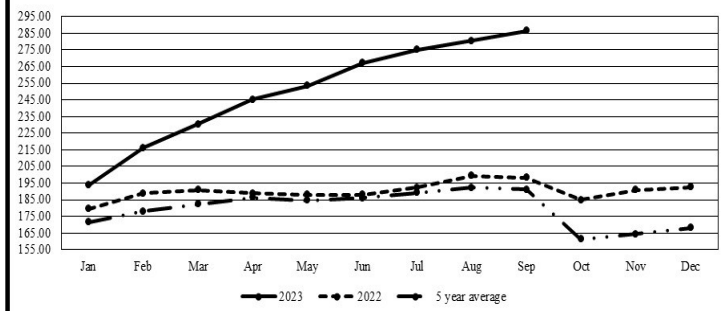
Monday's Missouri Stocker formula consists of **3650 (3479)** head with a weighted average weight of **540.28 (523.50)** lbs. and a price value of **278.63 (244.39)**, 0.87 higher (1.14 higher) than last week.

This a rolling seven day calculated weighted value which combines all Feeder Steers reported by MDA/USDA Market News Service weighing from 400-649 lbs. in the Medium and Large 1 and Medium and Large 1-2 frame and muscle classifications, including all comment cattle except Brahman X. Heifer values are in parentheses.

MISSOURI WEEKLY CATTLE AUCTION SUMMARY

Compared to last week, steers and heifers overall unevenly steady with long weaned, vaccinated calves and yearlings bringing a premium and unweaned, bawling calves getting discounted. Demand was good for the right kind of cattle on a moderate supply. Boxed beef cutouts gained ground this week with choice closing at 305.38, 4.58 higher than a week ago, and select at 278.70, up 3.21 for the week. Negotiated feedlot sales was just over 89,000, as of Friday afternoon. Live purchases ranged from 184.00 to 187.00 and dressed from 292.00 to 294.00. Estimated weekly cattle slaughter came in at 638,000 head, 21,000 more than a week ago but 37,000 less than a year ago. Year to date cattle slaughter totaled 26.122 million head, 4.57 percent less than a year ago. Friday's Cattle on Feed report showed cattle and calves on feed at 11.6 million head, one percent more than a year ago. This is the second highest October 1 inventory since the series began in 1996. The pre-report estimates had a range of 99 to 100.3 percent. Placements in feedlots totaled 2.21 million head, 6 percent more than a year ago. The pre-report estimates had a range of 95.9 to 104.8 percent. Marketings of fed cattle totaled 1.66 million head, 11 percent less than a year ago. Pre-report estimates of markings had a range of 88.0 to 91.3 percent. Monday's Missouri Stocker Formula consists of 3650 head with a weighted average weight of 540.28 lbs and a price value of 278.63, 0.87 higher than a week ago. The steer/heifer price spread is 34.24.

Missouri Stocker Formula - Steers

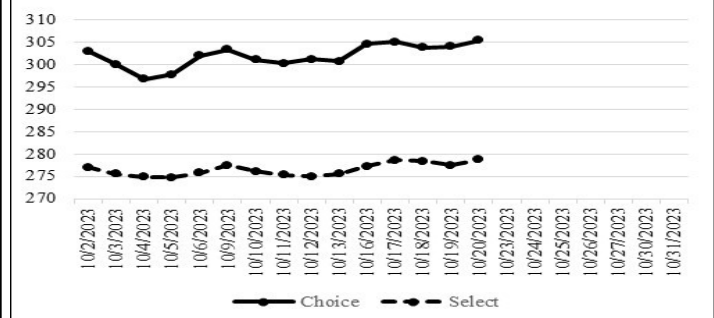


*Graph is updated the first Monday of each month. Axis value ranges may be updated to reflect data points.

NATIONAL BOXED BEEF CUTOUT/BOXED BEEF CUTS

DATE	CHOICE	SELECT	TOTAL LOADS
10/16	304.67	277.20	87
10/17	305.14	278.63	153
10/18	303.86	278.35	173
10/19	304.12	277.48	164
10/20	305.38	278.70	140
5 Day Simple Average	304.63	278.07	

Boxed Beef Cuts October 2023



*Axis value ranges may be updated to reflect data points.

WEEKLY LIVESTOCK SLAUGHTER 10/21/23

	CATTLE	HOGS	SHEEP
Week to Date:	638,000	2,610,000	36,000
Last Week:	617,000	2,609,000	34,000
Last Year:	675,000	2,570,000	34,000

The Weekly Market Summary, as well as historical summaries, are available on our website <https://agmarketnews.mo.gov/summaries>
Market News Hotline: 1-573-522-9244

SOUTHWEST MISSOURI WEEKLY SUMMARY

(Joplin and Springfield)

Receipts: 9,464 Week ago: 5,565 Year Ago: 6,560

Compared to last week, steer and heifer calves 3.00 to 10.00 higher, yearlings mostly steady to firm. Slaughter cows steady to 5.00 lower. Slaughter bulls steady.

FEEDER STEERS:
Medium and Large 1

350-400 lbs.	320.00-350.00
400-500 lbs.	292.00-340.00
500-600 lbs.	270.00-305.00
600-700 lbs.	261.00-280.00
700-800 lbs.	243.00-270.00
800-900 lbs.	235.00-240.00
900-1000 lbs.	220.50-234.25
21 hd 1021 lbs.	217.00

FEEDER HEIFERS:
Medium and Large 1

350-400 lbs.	275.00-282.00
400-500 lbs.	252.50-280.00
500-600 lbs.	236.00-264.00
600-700 lbs.	229.00-253.00
700-800 lbs.	225.00-248.25
800-900 lbs.	215.00-217.00
900-950 lbs.	201.00-209.00
1000-1050 lbs.	186.00-190.00

FEEDER HOLSTEIN STEERS
Large 3

Scarce

Scarce

SLAUGHTER COWS: Breaking and Boning (70-85% lean) 87.00-108.00, high dressing 98.00-117.00; low dressing 75.00-95.00. Lean (85-90%) 79.00-95.00

SLAUGHTER BULLS: Yield Grade 1-2 1260-2220 lbs. 109.00-123.00; high dressing 120.00-134.00; low dressing 95.00-109.00

BRED COWS: Medium and Large 1 2-4 yrs 1120 lbs 2nd to 3rd stage 2275.00; 2-8 yrs 1025-1425 lbs 2nd to 3rd stage 1500.00-2475.00, 1st stage 1500.00-1725.00 per head

BRED HEIFERS: Medium and Large 1-2 <2 yrs 910-1118 lbs 2nd to 3rd stage 1500.00-1850.00; 2-4 yrs 868-1085 lbs 2nd to 3rd stage 1400.00-1700.00, 1st stage 1475.00 per head

COW & CALF PAIRS: Medium and Large 1 2-4 yrs 1120 lbs with 150-300 lb calves 3150.00; 2-8 yrs 1055-1790 lbs some rebred 1st or 2nd stage with <150 to >300 lb calves 2200.00-2800.00 per pair

SOUTH CENTRAL MISSOURI WEEKLY SUMMARY

(West Plains, Phillipsburg)

Receipts: 3,776 Week ago: 3,544 Year Ago: 4,456

Compared to last week, steers and heifers early week 2.00 to 6.00 higher, late week steady to 6.00 lower. Slaughter cows and bulls 1.00 to 4.00 lower.

FEEDER STEERS:
Medium and Large 1

350-400 lbs.	305.00-328.00
400-500 lbs.	290.00-310.00
500-600 lbs.	288.00-313.50
600-700 lbs.	254.00-292.00
700-800 lbs.	253.00-256.00
800-850 lbs.	232.00-241.00

FEEDER HEIFERS:
Medium and Large 1

300-400 lbs.	265.00-280.00
400-500 lbs.	245.00-248.00
500-600 lbs.	225.00-260.00
600-700 lbs.	220.00-239.00
700-800 lbs.	230.00-238.25
Pkg 838 lbs.	215.00

FEEDER HOLSTEIN STEERS
Large 3

Scarce

Scarce

SLAUGHTER COWS: Breaking and Boning (70-85% lean) 87.50-104.00, high dressing 105.00-116.00; low dressing 80.00-94.00. Lean (85-90%) 75.00-94.00

SLAUGHTER BULLS: Yield Grade 1-2 1250-2265 lbs. 105.00-126.00; high dressing 120.00-154.00; low dressing 86.00-116.00

BRED COWS: Medium and Large 1 2-4 yrs 1120-1183 lbs 1st to 3rd stage 1650.00-1850.00. Medium and Large 1-2 975-1500 lbs 1st to 3rd stage 1150.00-1900.00 per head

BRED HEIFERS: Medium and Large 1-2 <2 yrs 905-1075 lbs 1st to 3rd stage 900.00-1350.00 per head

COW & CALF PAIRS: Medium and Large 1 2-4 yrs 1160 lbs with 150-300 lb calves 2350.00. Medium and Large 1-2 1082-1520 lbs with <150 to >300 lb calves 1725.00-2225.00 per pair

WEST CENTRAL MISSOURI WEEKLY SUMMARY

(Kingsville, Windsor, Butler)

Receipts: 4,918 Week ago: 4,301 Year ago: 4,365

FEEDER STEERS:
Medium and Large 1

300-400 lbs.	315.00-362.50
400-500 lbs.	290.00-344.00
500-600 lbs.	270.00-330.00
600-700 lbs.	252.50-294.00
700-800 lbs.	243.00-270.00
800-900 lbs.	232.50-256.50

FEEDER HEIFERS:
Medium and Large 1

300-400 lbs.	264.00-300.00
400-500 lbs.	250.00-282.50
500-600 lbs.	238.00-274.00
600-700 lbs.	237.00-260.00
700-800 lbs.	233.50-254.75
800-850 lbs.	226.75-233.50

SLAUGHTER BULLS: Yield Grade 1-2 1310-2360 lbs 114.50-126.50; high dressing 129.50-138.00, low dressing 95.00-112.00

SLAUGHTER COWS: Breaking and Boning (70-85% lean) 84.50-119.00, high dressing 103.50-126.00 low dressing 80.00-94.00. Lean (85-90%) 70.00-94.00

BRED COWS: Medium and Large 1-2 5-8 yrs 1151 lbs 2nd to 3rd stage 1275.00 per head

COW & CALF PAIRS: Medium and Large 1-2 5-8 yrs 1050-1225 lbs with 150-300 lb calves 1560.00 -1850.00 per pair

NORTHEAST MISSOURI WEEKLY SUMMARY

(Bowling Green, Kingdom City, Palmyra)

Receipts: 3,795 Week ago: 2,596 Year ago: 3,830

Compared to last week, steers under 600 lbs fully steady to firm, 660-650 lbs 5.00 to 10.00 higher, over 700 lbs firm undertone. Heifers 400-500 lbs firm to higher undertone, 500-600 lbs 5.00 to 10.00 higher, over 600 lbs steady to firm. Slaughter cows steady to 5.00 lower.

FEEDER STEERS:
Medium and Large 1

400-500 lbs.	301.00-329.00
500-600 lbs.	287.00-311.00
600-700 lbs.	257.00-281.00
700-800 lbs.	252.00-265.25
59 hd 889 lbs.	245.00
56 hd 932 lbs.	235.75

FEEDER HEIFERS:
Medium and Large 1

400-500 lbs.	268.00-285.00
500-600 lbs.	259.00-267.00
600-700 lbs.	251.50-264.00
21 hd 760 lbs.	244.00

SLAUGHTER BULLS: Yield Grade 1-2 1320-2230 lbs 119.00-139.00; high dressing 130.00-145.50; low dressing 108.00-124.00

SLAUGHTER COWS: Breaking and Boning, (70-85% lean) 96.00-113.00; high dressing 105.00-124.00; low dressing 89.00-101.00. Lean (85-90%) 88.00-98.50

SLAUGHTER STEERS: Choice 2 -3 181.00-187.00. Select and Choice 1-3 175.00-178.50.

SLAUGHTER HEIFERS: Choice 2-3 181.50-183.00

BRED COWS: Medium and Large 1 2-8 yrs 1012-1360 lbs 2nd stage 1725.00-2025.00. Medium and Large 1-2 2-8 yrs 1102-1230 lbs 2nd to 3rd stage 1675.00-1800.00 per head

COW/CALF PAIRS: Medium and Large 1-2 2-8 yrs 1000-1175 lbs with 150-300 lb calves 1650.00-2010.00 per pair

NORTH CENTRAL MISSOURI WEEKLY SUMMARY

(Macon, Unionville, Green City, New Cambria)

Receipts: 1,203 Week ago: 969 Year ago: 2,630

Compared to the last sale two weeks ago, steers and heifers sold 5.00 to 10.00 lower, spots sharply lower. Slaughter cows steady to 3.00 lower.

*Some sale barns on a bi-weekly schedule and may not have a sale each week.

FEEDER STEERS:
Medium and Large 1

400-500 lbs.	310.00-324.00
500-600 lbs.	285.00-297.50
600-650 lbs.	255.50-256.50
800-900 lbs.	243.50-248.00

FEEDER HEIFERS:
Medium and Large 1

400-500 lbs.	275.00-290.00
500-550 lbs.	247.50-255.50
74 hd 694 lbs.	255.00

SLAUGHTER BULLS: Yield Grade 1-2 1570-1820 lbs 120.00-138.00; low dressing 117.50-118.00

SLAUGHTER COWS: Breaking and Boning, (70-85% lean) 99.5-113.00; low dressing 85.00-96.00. Lean (85-90%) 89.00-99.50

BRED COWS: Medium and Large 1 5-8 yrs 1575 lbs 2nd stage 1985.00. Medium and Large 1-2 2-8 yrs 1185-1345 lbs 2nd stage 1400.00-1635.00 per head

COW & CALF PAIRS: Scarce

SOUTHEAST MISSOURI WEEKLY SUMMARY

(Jackson and Farmington)

Receipts: 2,157 Week ago: 983 Year ago: 2,473

Compared to last week, steers 2.00 to 13.00 higher and heifers uneven from 7.00 lower to 13.00 higher. Slaughter cows steady. Slaughter bulls steady to 2.00 higher.

FEEDER STEERS:
Medium and Large 1

300-400 lbs.	260.00-315.00
400-500 lbs.	257.50-297.00
500-600 lbs.	250.00-287.00
600-700 lbs.	239.00-270.00
700-800 lbs.	215.00-244.00
800-900 lbs.	214.00-236.00

FEEDER HEIFERS:
Medium and Large 1

300-400 lbs.	240.00-270.00
400-500 lbs.	230.00-267.00
500-600 lbs.	221.00-262.00
600-700 lbs.	212.00-243.00
700-800 lbs.	220.00-230.50
800-900 lbs.	210.00-217.00

SLAUGHTER BULLS: Yield Grade 1-2 935-2255 lbs. 85.00-109.00; high dressing 111.00-126.00

SLAUGHTER COWS: Breaking and Boning (75-85% lean) 80.00-95.00; high dressing 92.00-118.00. Lean (85-90% lean) 67.00-85.00

BRED COWS: Medium and Large 2 2-8 yrs 1005-1320 lbs 1st to 3rd stage 1100.00-1750.00 per head

COW & CALF PAIRS: Medium and Large 2 2-8 yrs 1025-1400 lbs with <150 to 300 lb calves 1500.00-1750.00 per pair

EAST CENTRAL MISSOURI WEEKLY SUMMARY

(Cuba, Vienna)

Receipts: 1,402 Week ago: 1,377 Year ago: 672

Compared to last week, steers and heifers steady to 3.00 lower. Slaughter cows steady to 4.00 lower.

FEEDER STEERS:
Medium and Large 1

350-400 lbs.	317.50-336.00
400-500 lbs.	294.50-330.00
500-600 lbs.	264.50-299.00
600-700 lbs.	245.00-267.50
700-800 lbs.	228.00-247.00
10 hd 810 lbs.	231.00

FEEDER HEIFERS:
Medium and Large 1

Few 350-400 lbs.	264.00-268.00
400-500 lbs.	245.00-265.00
500-550 lbs.	232.50-253.00
650-700 lbs.	224.00-239.00
750-800 lbs.	221.00-227.00
Pkg 890 lbs.	211.00

SLAUGHTER BULLS: Yield Grade 1-2 1258-2205 lbs 113.00-119.50; low dressing 85.00-108.00

SLAUGHTER COWS: Breaking and Boning, (70-85% lean) 91.00-102.00; high dressing 102.00-119.00 Lean (85-90%) 83.50-92.00

BRED COWS: Medium and Large 1-2 2-8 870-1320 lbs 1st to 3rd stage 1150.00-1700.00 per head

COW & CALF PAIRS: Scarce

NORTHWEST MISSOURI WEEKLY SUMMARY

(Tina)

Receipts: 1,035 Week Ago: 869 Year Ago: 1,002

Compared to last week, feeders 2.00 to 5.00 higher. Slaughter cows steady to firm.

FEEDER STEERS:
Medium and Large 1

300-350 lbs.	330.00-349.00
400-500 lbs.	299.00-322.50
500-600 lbs.	282.00-291.00
600-700 lbs.	278.25-288.00
700-800 lbs.	253.00-262.75
49 hd 823 lbs.	250.00

FEEDER HEIFERS:
Medium and Large 1

Pkg 402 lbs.	277.50
500-550 lbs.	263.00-265.50
78 hd 660 lbs.	260.00
700-750 lbs.	243.00-249.75

SLAUGHTER BULLS: Yield Grade 1-2 1725-1945 lbs 115.00-125.00

SLAUGHTER COWS: Breaking and Boning, (70-85% lean) 90.50-109.50; high dressing 112.50-117.00. Lean (85-90%) 85.00-104.50

BRED COWS: Scarce

COW & CALF PAIRS: Scarce

AFTERNOON NATIONAL SLAUGHTER CATTLE REVIEW

So far for Friday in the Southern Plains negotiated cash trading has been inactive with light demand. In Nebraska and Western Cornbelt negotiated cash trading has been limited on light demand. Not enough purchases in any region for a market trend. The last reported market was on Thursday in all regions. In the Texas Panhandle with live FOB purchases traded at 185.00. In Kansas live FOB purchases traded from 184.00-185.00. In Nebraska and the Western Cornbelt live FOB and dressed delivered purchases traded from 186.00-187.00 and at 294.00, respectively.

Negotiated Cash Sales:

Confirmed:	11,203	Week Ago:	9,714	Year Ago:	1,609
Week to date:	89,212	Week Ago:	91,849	Year Ago:	100,579

<u>Live Basis</u>	<u>Steers</u>	<u>Heifers</u>
Over 80% Choice	185.00-187.00, avg 186.64	186.00-188.00, avg 186.90
65-80% Choice	-	-
35-65% Choice	185.50	185.50
0-35% Choice	-	-
Total All Grades	185.00-187.00, avg 186.55	185.50-188.00, avg 186.77
<u>Dressed Basis</u>		
Over 80% Choice	290.00-292.00, avg 290.32	292.00
65-80% Choice	290.00	-
35-65% Choice	-	-
0-35% Choice	-	-
Total All Grades	290.00-292.00, avg 290.16	292.000

<u>All Beef Type Steers/Heifers</u>	<u>Head</u>	<u>Avg Wt</u>	<u>Price Range</u>	<u>Wtd Avg</u>
Live FOB	7,248	1446.3	180.00-190.00	186.57
Live Del	192	1435.9	186.00-187.00	186.54
Dressed Del	3,693	918.3	290.00-295.00	293.64
Dressed FOB	-	-	-	-

WEEKLY COMMODITY FUTURES TRENDS

Compared to last week, Live Cattle 0.85 to 3.43 lower, Lean Hogs 3.50 to 4.40 lower, Feeder Cattle 8.05 to 9.37 lower.

Daily Futures Closes

	Mon.	Tues.	Wed.	Thu.	Fri.
Cattle					
Oct	185.20	185.50	185.72	184.40	184.27
Dec	186.55	186.87	187.20	185.30	184.62
Feb	190.65	191.00	191.07	188.95	187.72
Apr	193.40	193.80	193.80	191.67	190.42
Jun	187.37	187.55	187.40	185.47	184.37
Lean Hogs					
Dec	68.30	67.55	68.02	68.00	66.00
Feb	73.07	72.05	72.30	72.32	70.42
Apr	79.95	79.00	78.92	78.95	76.90
May	85.42	84.60	84.55	84.72	82.62
Jun	93.67	92.87	92.62	92.52	90.77
Fdr Cat					
Oct	248.32	248.80	247.12	243.57	241.82
Nov	249.92	250.45	249.72	244.50	242.22
Jan	251.52	252.80	250.90	245.37	243.05
Mar	254.02	255.15	253.60	248.27	245.72
Apr	258.22	259.27	257.82	252.60	249.90
Milk					
Oct	16.81	16.82	16.82	16.82	16.88
Nov	17.39	17.83	17.83	17.83	18.12
Dec	17.50	17.84	17.84	17.84	18.09

WEEKLY COMMODITY GRAIN FUTURES TRENDS

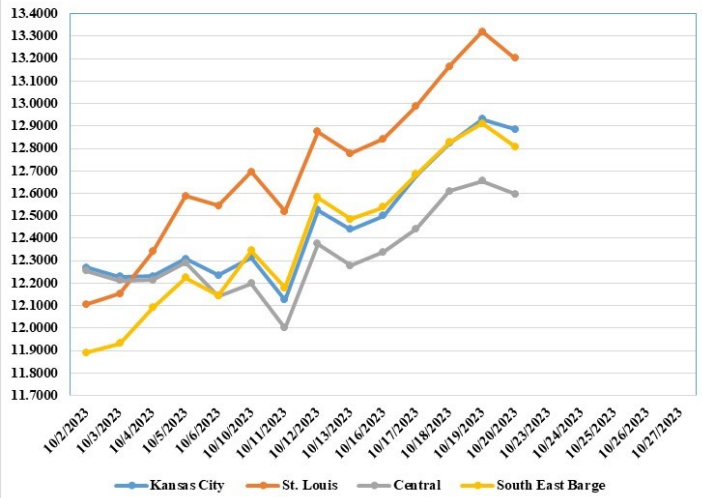
Compared to last week, Soybeans 0.18 to 0.22 higher, Wheat 0.07 to 0.10 higher, Corn steady to 0.02 higher, KC Wheat 0.01 lower to 0.01 higher, Soybean Meal 18.00 to 33.90 higher.

Daily Grain Futures Closes

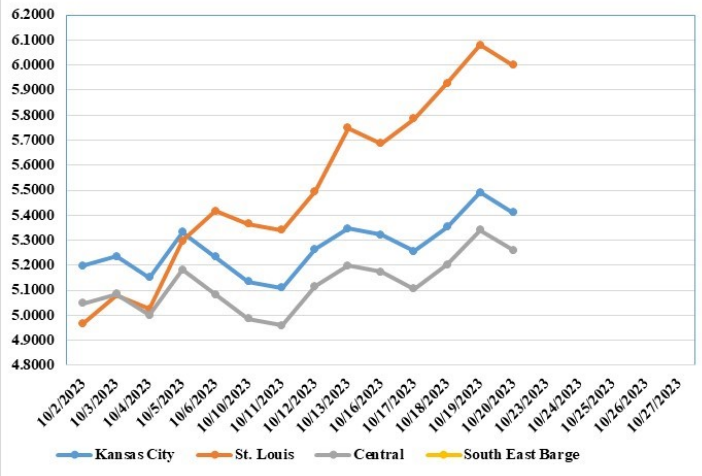
	Mon.	Tues.	Wed.	Thu.	Fri.
Soybeans					
Nov	1286 1/4	1296 3/4	1311	1315 1/2	1302 1/4
Jan	1305 3/4	1316 1/4	1329 1/4	1331 3/4	1320 1/4
Mar	1318 3/4	1329 1/4	1340	1340	1331
May	1331 3/4	1341 1/2	1351 1/4	1351 1/2	1344
Jul	1338 1/4	1347	1356	1357	1350 3/4
Wheat					
Dec	577 1/4	570 1/2	580 1/4	594	586
Mar	604 1/2	598 3/4	608	619 3/4	613 1/2
May	620 3/4	616	624 1/4	634 3/4	630 3/4
Jul	634 3/4	631 1/4	638 1/2	647 3/4	645 1/2
Sep	647 3/4	645 1/2	651 3/4	659 1/2	659 1/4
Corn					
Dec	490	489	492	505	495 1/2
Mar	505	503 3/4	506 1/2	517	509
May	512 3/4	511 1/4	514 1/2	524	516 1/2
Jul	518 1/4	516 1/2	519 3/4	528 3/4	521 3/4
Sep	514 1/4	513	515 1/2	522 3/4	517 1/4
KC Wheat					
Dec	668 3/4	666 3/4	670 1/2	676 1/4	670
Mar	678	675 3/4	679	684 1/2	679 1/4
May	684 1/4	681 1/2	684 1/2	689 3/4	685 1/4
Jul	687 1/2	684 1/2	687 1/4	692 1/2	688 1/4
Sep	697 1/2	694 1/4	696 1/2	701 1/4	697 1/4
SB Meal					
Dec	390.20	399.80	413.80	423.00	423.90
Jan	385.90	394.70	406.30	414.20	412.60
Mar	381.10	389.00	398.80	406.00	402.80
May	379.90	387.10	395.50	401.50	398.80
Jul	380.90	387.50	394.60	400.10	398.80

MONTHLY GRAIN CROP

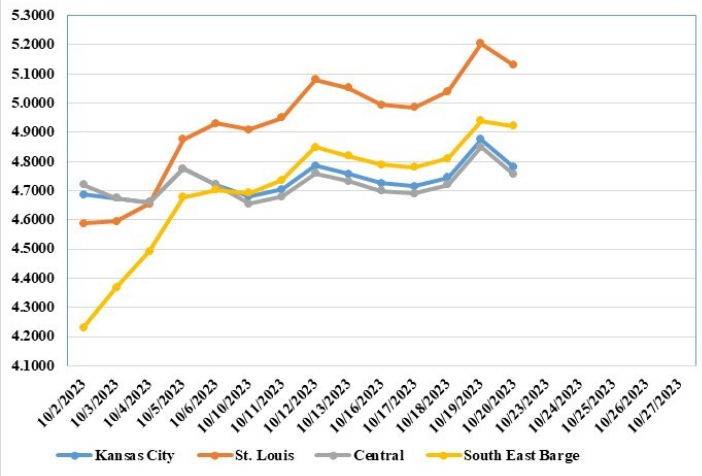
October 2023 Soybean Bids



October 2023 Wheat Bids



October 2023 Corn Bids



*Axis value ranges may be updated to reflect data points.

MISSOURI GRAIN WEEKLY TRENDS

Compared to last week, Soybeans 0.27 to 0.62 higher, Wheat 0.11 to 0.40 higher, Corn 0.02 to 0.10 higher, Sorghum 0.02 to 0.03 higher.

Area	#1 Soybeans	#2 Soft Wheat	#2 Corn	#2 Grain Sorghum
Kansas City				
Friday**	12.30-12.55	5.35	4.68-4.83	5.18
Monday	12.36-12.61	5.32	4.65-4.80	5.15
Tuesday	12.47-12.92	5.26	4.64-4.79	5.14
Wednesday	12.61-13.06	5.35	4.67-4.82	5.17
Thursday	12.76-13.26	5.49	4.80-4.95	5.30
Friday	12.62-13.17	5.41	4.71-4.86	5.21
St. Louis				
Friday**	12.77-12.78	5.55-5.95	5.05	5.68
Monday	12.84	5.52-5.85	4.99-5.00	5.65
Tuesday	12.97-13.01	5.78	4.98-4.99	5.64
Wednesday	13.14-13.19	5.88-5.97	5.03-5.05	5.67
Thursday	13.29-13.36	6.02-6.14	5.19-5.22	5.80
Friday	13.20	5.94-6.06	5.13-5.14	5.71
Central				
Friday**	12.25-12.30	5.10-5.30	4.73	—
Monday	12.31-12.36	5.07-5.27	4.70	—
Tuesday	12.42-12.47	5.01-5.21	4.69	—
Wednesday	12.61	5.10-5.30	4.72	—
Thursday	12.66	5.24-5.44	4.85	—
Friday	12.57-12.62	5.16-5.36	4.76	—
S.E. MO				
Friday**	12.38-12.55	—	4.79-4.83	—
Monday	12.41-12.61	—	4.77-4.80	—
Tuesday	12.57-12.77	—	4.76-4.79	—
Wednesday	12.70-12.91	—	4.79-4.82	—
Thursday	12.76-12.98	—	4.92-4.95	—
Friday	12.62-12.92	—	4.91-4.96	—

(PRICES PER BUSHEL) *NEW CROP **PREVIOUS WEEK'S PRICES
*Bids calculated using Kansas City, St. Louis, and St. Joseph bids

**WHOLESALE FEEDSTUFFS PRICES
(DOLLARS PER TON-BULK BASIS)**

Area	Soybean Hulls Pellets	Soybean Meal 46.5-48%	Corn Gluten Pellets 21%	Wheat Middlings
Kansas City	195.00	431.40	255.00	165.00
St. Louis	n/a	n/a	245.00	160.00

LIVESTOCK SLAUGHTER

Commercial red meat production for the United States totaled 4.35 billion pounds in September, down 7 percent from the 4.66 billion pounds produced in September 2022.

Beef production, at 2.15 billion pounds, was 10 percent below the previous year. Cattle slaughter totaled 2.61 million head, down 10 percent from September 2022. The average live weight was down 2 pounds from the previous year, at 1,362 pounds.

Veal production totaled 3.6 million pounds, 15 percent below September a year ago. Calf slaughter totaled 21,700 head, down 31 percent from September 2022. The average live weight was up 50 pounds from last year, at 287 pounds.

Pork production totaled 2.19 billion pounds, down 3 percent from the previous year. Hog slaughter totaled 10.5 million head, down 2 percent from September 2022. The average live weight was down 4 pounds from the previous year, at 281 pounds.

CATTLE ON FEED

Cattle and calves on feed for the slaughter market in the United States for feedlots with capacity of 1,000 or more head totaled 11.6 million head on October 1, 2023. The inventory was 1 percent above October 1, 2022. This is the second highest October 1 inventory since the series began in 1996. The inventory included 6.95 million steers and steer calves, up slightly from the previous year. This group accounted for 60 percent of the total inventory. Heifers and heifer calves accounted for 4.64 million head, up 1 percent from 2022.

Placements in feedlots during September totaled 2.21 million head, 6 percent above 2022. Net placements were 2.15 million head. During September, placements of cattle and calves weighing less than 600 pounds were 460,000 head, 600-699 pounds were 355,000 head, 700-799 pounds were 485,000 head, 800-899 pounds were 521,000 head, 900-999 pounds were 290,000 head, and 1,000 pounds and greater were 95,000 head.

Marketings of fed cattle during September totaled 1.66 million head, 11 percent below 2022.

Other disappearance totaled 57,000 head during September, 8 percent above 2022

MISSOURI CROP PROGRESS AND CONDITION

	Week Ending			2018-2022 Average
	10/15/23	10/08/23	10/15/22	
Corn harvested	65	56	65	65
Soybeans dropping leaves	95	91	93	85
Soybeans harvested	46	27	36	28
Cotton bolls opening	95	92	99	97
Cotton harvested	45	23	28	35
Winter wheat planted	32	14	31	29
Winter wheat emerged	6	2	8	11

MISSOURI WEEKLY HAY SUMMARY 10/19/23

Drought conditions are basically unchanged from a week ago, with very little improvement on the drought monitor from the small amount of rain received in some areas. There is still hay movement as preparations for colder weather are happening. Missouri grain producers continue with harvest progress with 54 percent of corn harvested and 46 percent of soybeans. The supply of hay is light to moderate and demand is moderate and prices mostly steady. The Missouri Department of Agriculture has a hay directory visit <http://mda.mo.gov/abd/haydirectory/> for listings of hay <http://agebb.missouri.edu/haylst/>
 Alfalfa - Supreme 250.00-300.00, small square 10.00-15.00 per bale
 Alfalfa - Premium 200.00-250.00
 Alfalfa - Good 150.00-200.00, small square 5.00-10.00 per bale
 Alfalfa - Fair 125.00-150.00
 Alfalfa/grass mix - Good/Premium small square 5.00-10.00 per bale
 Mixed grass - Good/Premium 150.00-225.00
 Mixed grass - Fair/Good 100.00-175.00, small square 5.00-8.00 per bale
 Mixed grass - Fair 50.00-100.00 per large round bale
 Wheat straw - 4.00-7.00 per small square bale

Please Note: The above volumes (tonnage, acres, and bales) listed are for confirmed trades only, it does not include estimated volume (tonnage) for bids or offers to the trade. List your hay for sale at: [Hay Listing Online Form](#). Explanation of Hay Quality Guidelines: [Hay Quality Designation Guidelines](#). Glossary of Terms: [Livestock, Poultry, & Grain Hay Terms](#)

MISSOURI WEEKLY SHEEP/GOAT AUCTION SUMMARY

Receipts: 1,765 Week Ago: 495 Last Year: 2,425

SHEEP: Feeder Lambs: Small and Medium 1-2 hair 45-50 lbs 200.00-240.00, thin 140.00.

Slaughter lambs Choice and Prime 1-3 w/s pkg 80 lbs 145.00; 100-120 lbs 130.00-137.50. Choice 1-3 w/s pkg 73 lbs 130.00; pkg 110 lbs 117.50. Choice and Prime 1-2 woolled pkg 60 lbs 235.00. Choice 1-2 woolled pkg 48 lbs 180.00; 70-75 lbs 160.00; pkg 86 lbs 142.00. Choice and Prime 1-2 hair 40-70 lbs 200.00-235.00; 70-90 lbs 175.00-215.00; 90-150 lbs 120.00-180.00. Choice and Prime 1-3 hair 55-70 lbs 210.00-245.00; 70-80 lbs 185.00-205.00; 80-95 lbs 150.00-162.50; pkg 120 lbs 102.50. Choice 1-2 hair pkg 61 lbs 155.00. Choice 1-2 hair 50-60 lbs 200.00-215.00; 60-70 lbs 180.00-205.00; 70-80 lbs 162.50-177.50; pkg 108 lbs 100.00. Good 1-2 hair pkg 56 lbs 170.00. Slaughter ewes Utility and Good 2 65-150 lbs 110.00-115.00. Utility and Good 2-3 110-120 lbs 85.00-87.00. Cull and Utility 1-2 80-110 lbs 55.00-67.50. Good 2-3 hair 80-120 lbs 105.00-115.00. Utility and Good 1-3 hair 95-120 lbs 70.00-85.00. Slaughter bucks 1-2 110-140 lbs 110.00-120.00. Bucks 1-2 hair 120-200 lbs 85.00-100.00. Replacement ewes Small and Medium 1-2 hair 1-2 yrs 75-80 lbs exp 135.00-155.00; 2-4 yrs 75-155 lbs exp 125.00-200.00.

GOATS: Feeder Kids: Selection 1 pkg 25 replacements 420.00; 35-50 lbs 250.00-290.00. Selection 1-2 30-45 lbs 187.00-210.00. Selection 2 25-50 lbs 152.00-235.00. Selection 3 pkg 30 lbs 155.00; 35-40 lbs pygmies 137.50-150.00. Wether kids Selection 2 45 lbs 215.00-235.00. Selection 3 pkg 45 lbs 125.00.

Slaughter kids Selection 1 50-85 lbs 220.00-280.00. Selection 1-2 50-75 lbs 180.00-232.00. Selection 2 50-70 lbs 175.00-235.00; 70-80 lbs 130.00-240.00. Slaughter nannies/does Selection 1-2 50-65 lbs pygmies 80.00-105.00; 70-175 lbs 80.00-130.00. Selection 2 pkg 143 lbs 80.00. Slaughter bucks/billies pkg 51 lbs pygmies 152.50; 75-145 lbs 110.00-170.00, pygmies 110.00. Selection 2 65-90 lbs 85.00-87.00. Wethers Selection 1-2 60-95 lbs 200.00-230.00. Wether kids Selection 1 90-110 lbs 250.00-260.00. Selection 2 50-75 lbs 175.00-255.00.

Replacement nannies/does Selection 1-2 1-2 yrs 78 lbs exp 155.00; 65-85 lbs open 185.00-205.00; 2-4 yrs 90-95 lbs exp 180.00-230.00.

Explanatory Notes: Stage - Represents estimated lambing/kidding period (Open, Exp=exposed, Bred, Fall = Sep-Nov, Win = Dec-Feb, Spr = Mar-May, Sum=Jun-Aug; w/s = woolled and shorn; /hd= per head; /fam=per family
 All price CWT unless otherwise noted.

MISSOURI DROUGHT MONITOR

Date	None	D0	D1	D2	D3	D4
10/17/23	15.32	21.91	30.96	21.51	10.30	0
10/10/23	16.12	24.18	31.67	17.73	10.30	0
10/18/22	0	17.60	32.00	36.12	11.73	2.55

Reflects percentage of Missouri impacted by drought. D0 Abnormally Dry; D1 Moderate Drought; D2 Severe Drought; D3 Extreme Drought; D4 Exceptional Drought

NATIONAL DIRECT DELIVERED FEEDER PIG REPORT

10/30/23 Receipts: 124,484 Week ago: 112,727 Year Ago: 73,043
 Early weaned pigs steady and feeder pigs 8.00 lower.
 Early weaned pigs 10-12 lbs. basis: Cash 69,945 head 14.00-33.50, weighted average 24.06.
 Formula 43,889 head 25.68-53.62, weighted average 37.89
 Feeder pigs 40 pounds basis: Cash 10,650 head 30.00-45.00, weighted average 35.85

NATIONAL DAILY DIRECT PRIOR DAY HOG REPORTS FOR 10/20/23

BARROWS AND GILTS (Carcass Basis): 5,755 head
 Base Carcass Price 68.00-76.00, weighted average 71.63

SOWS (Live Basis): 6,436 head
 300-500 lbs. 17.00-53.50
 Over 500 lbs. 28.03-53.50

MISSOURI WEEKLY DIRECT SLAUGHTER CATTLE REPORT 10/20/23

Weekly Receipts: 200 Week ago: 440 Year ago: 240
 Trading as of Friday morning, trade is light to moderate with flat dressed sales steady at 292.00. Grid dressed inactive.

LIVE STEERS & HEIFERS: No sales reported
DRESSED STEERS & HEIFERS: 4 loads flat 292.00

GRADE AND WEIGHT (Grid): No sales reported

Click here for the current [National Crop Progress](#)
 Click here for the current [Missouri Crop Progress](#)
 The current hay directory can be found at: [Hay Directory](#).