

Weekly Market Summary

Published by:
Missouri Department of Agriculture
Ag Business Development Division
Market News Program



Chris Chinn, Director
 Jill Wood, Division Director
 Tony Hancock, Editor
<http://www.ams.usda.gov/marketnews.htm>
<http://www.ams.usda.gov/marketnews.htm>

Michael L. Parson, Governor

Volume XLIII, Number 43 ♦ P.O. Box 630, Jefferson City, MO 65102 ♦ (573) 751-4211 ♦ Mon, Oct 30, 2023

MISSOURI WEEKLY FEEDER CATTLE WEIGHTED AVERAGE REPORT

Receipts: 18,510 Week ago: 19,809 Year ago: 19,109
 Steers and Heifers Medium and Large 1—Weighted average weights and prices

STEERS: Medium and Large 1

326 lbs. 303.58	522 lbs. 279.22	723 lbs. 248.29	905 lbs. 240.32
371 lbs. 301.26	576 lbs. 271.63	781 lbs. 244.99	
429 lbs. 295.25	620 lbs. 258.48	821 lbs. 240.62	
474 lbs. 289.99	665 lbs. 249.79	880 lbs. 237.17	

HEIFERS: Medium and Large 1

325 lbs. 262.53	523 lbs. 242.13	721 lbs. 238.55	984 lbs. 209.95
377 lbs. 266.09	568 lbs. 234.74	795 lbs. 212.64	
425 lbs. 252.82	623 lbs. 235.36	832 lbs. 208.00	
481 lbs. 255.78	681 lbs. 245.13	925 lbs. 208.28	

MISSOURI STEER (HEIFER) STOCKER FORMULA 10/30/2023

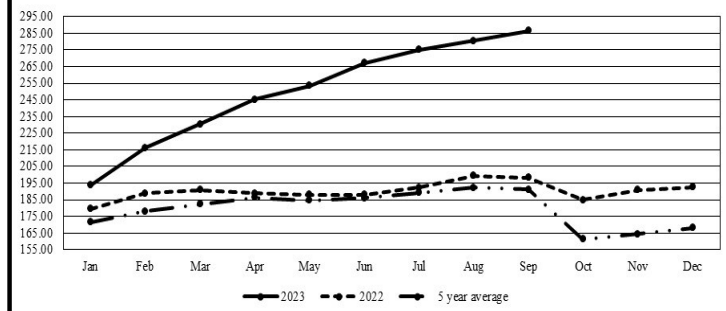
Monday's Missouri Stocker formula consists of **3466 (3738)** head with a weighted average weight of **541.70 (526.73)** lbs. and a price value of **265.07 (231.75)**, 13.56 lower (12.64 lower) than last week.

This a rolling seven day calculated weighted value which combines all Feeder Steers reported by MDA/USDA Market News Service weighing from 400-649 lbs. in the Medium and Large 1 and Medium and Large 1-2 frame and muscle classifications, including all comment cattle except Brahman X. Heifer values are in parentheses.

MISSOURI WEEKLY CATTLE AUCTION SUMMARY

Compared to last week, feeders sold 5.00 to 15.00 lower following a bearish monthly cattle on feed report. The supply of feeders was light to moderate with a few reports of producers deciding not to market this week in hopes prices might bounce back some. Despite losses and backing off from new records nearly every week for the last couple of months price levels are still very respectable. Demand was moderate buyers continue to want good long weaned cattle with a couple of rounds of shots. A hard freeze over the weekend in western states that is forecast for MO early this week could provide a little relief and see the steep discounts for the cattle that are considered high health risk in Oct decrease a bit as weather stabilizes. A few of the top stick out sales from the week included a load of 805 lb. steers at Callaway Livestock Center that sold for 246.00. A part load of 572 lb. steers at Kingsville Livestock Market sold at 302.50. Lolli Brothers Livestock sold a load of 722 lb. steers at 266.85. Boxed beef cutouts ended the week slightly higher. Choice closed at 307.57, up 2.19 and select closed at 280.12, up 1.42 compared to last Friday. Negotiated feedlot sales as of the Friday afternoon totaled just under 71K head for the week. Live sales were reported from 183.00-186.00 and dressed sales were reported at 290.00-292.00. Missouri Stocker formula consists of 3466 head with a weighted average weight of 541.70 lbs. and a price value of 265.07, 13.56 lower than a week ago. The steer/heifer spread is 33.32.

Missouri Stocker Formula - Steers

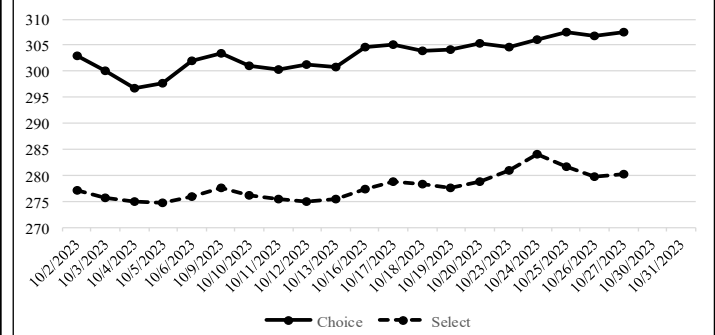


*Graph is updated the first Monday of each month. Axis value ranges may be updated to reflect data points.

NATIONAL BOXED BEEF CUTOUT/BOXED BEEF CUTS

<u>DATE</u>	<u>CHOICE</u>	<u>SELECT</u>	<u>TOTAL LOADS</u>
10/23	304.54	281.02	105
10/24	305.98	284.00	101
10/25	307.50	281.66	141
10/26	306.85	279.69	150
10/27	307.57	280.12	134
5 Day Simple Average	306.49	281.30	

Boxed Beef Cuts October 2023



*Axis value ranges may be updated to reflect data points.

WEEKLY LIVESTOCK SLAUGHTER 10/28/23

	<u>CATTLE</u>	<u>HOGS</u>	<u>SHEEP</u>
Week to Date:	636,000	2,614,000	37,000
Last Week:	638,000	2,610,000	36,000
Last Year:	667,000	2,564,000	34,000

The Weekly Market Summary, as well as historical summaries, are available on our website <https://agmarketnews.mo.gov/summaries>
 Market News Hotline: 1-573-522-9244

SOUTHWEST MISSOURI WEEKLY SUMMARY

(Joplin and Springfield)

Receipts: 6,768 Week ago: 9,464 Year Ago: 6,877

Compared to last week, steers and heifers 8.00 to 15.00 lower, spots 20.00 lower. Slaughter cows and bulls steady to 2.00 lower.

FEEDER STEERS:

Medium and Large 1

300-400 lbs.	300.00-310.00
400-500 lbs.	270.00-315.00
500-600 lbs.	254.00-287.00
600-700 lbs.	246.00-256.00
700-800 lbs.	241.00-249.00
800-900 lbs.	224.00-242.00
Pkg 911 lbs.	224.00

FEEDER HEIFERS:

Medium and Large 1

300-400 lbs.	267.50-277.00
400-450 lbs.	228.00-267.00
500-600 lbs.	216.00-240.00
600-700 lbs.	221.00-229.00
700-750 lbs.	216.00-223.00
22 hd 832 lbs.	208.00
Pkg 916 lbs.	196.00

FEEDER HOLSTEIN STEERS

Large 3

Pkg 540 lbs.	170.00
660-700 lbs.	155.00-163.00
Pkg 747 lbs.	156.00
Pkg 801 lbs.	165.00

SLAUGHTER COWS: Breaking and Boning (70-85% lean) 86.00-106.00, high dressing 96.00-117.50; low dressing 75.00-94.00. Lean (85-90%) 77.50-93.00

SLAUGHTER BULLS: Yield Grade 1-2 1200-2390 lbs. 108.00-125.00; high dressing 118.00-131.00; low dressing 94.50-106.50

BRED COWS: Medium and Large 1 2-8yrs 1097-1520 lbs 2nd to 3rd stage 1500.00-2225.00. Medium and Large 1-2 2-8 yrs 1000-1475 lbs 1st to 3rd stage 1100.00-1610.00; >8 yrs 1222-1238 lbs 2nd to 3rd stage 1375.00 per head

BRED HEIFERS: Medium and Large 1-2 2-4 yrs 880-1135 lbs 2nd to 3rd stage 1225.00-1525.00 per head

COW & CALF PAIRS: Medium and Large 1-2 2-8 yrs 1125-1390 lbs with <150 to 300 lb calves 1450.00-1850.00; >8 yrs 1538 lbs with 150-300 lb calves 1650.00 per pair

SOUTH CENTRAL MISSOURI WEEKLY SUMMARY

(West Plains, Phillipsburg)

Receipts: 3,301 Week ago: 3,776 Year Ago: 4,459

Compared to last week, steers and heifers 6.00 to 10.00 lower, spots 15.00 lower. Slaughter cows steady to 4.00 lower. Slaughter bulls steady.

FEEDER STEERS:

Medium and Large 1

300-400 lbs.	290.00-334.00
450-500 lbs.	283.00-295.00
500-600 lbs.	252.00-290.00
600-700 lbs.	240.00-269.50
11 hd 785 lbs.	231.00
Pkg 832 lbs.	195.00

FEEDER HEIFERS:

Medium and Large 1

300-400 lbs.	252.50-277.50
400-500 lbs.	229.00-255.00
500-600 lbs.	224.50-247.00
600-650 lbs.	221.00-224.00
700-750 lbs.	217.00-218.00

FEEDER HOLSTEIN STEERS

Large 3

Scarce

SLAUGHTER COWS: Breaking and Boning (70-85% lean) 87.50-100.00, high dressing 95.00-115.00; low dressing 75.00-88.00. Lean (85-90%) 70.00-91.00

SLAUGHTER BULLS: Yield Grade 1-2 1290-2145 lbs. 113.00-125.00; high dressing 115.00-141.00; low dressing 88.00-110.00

BRED COWS: Medium and Large 1-2 2-8 yrs 1052-1415 lbs 2nd to 3rd stage 1250.00-1850.00, 1st stage 1250.00-1425.00 per head

BRED HEIFERS: Medium and Large 1-2 <2 yrs 980 lbs 1st to 3rd stage 1200.00 per head

COW & CALF PAIRS: Medium and Large 1-2 2-8 yrs 1228-1232 lbs rebred 1st stage 1800.00-2225.00 per pair

WEST CENTRAL MISSOURI WEEKLY SUMMARY

(Kingsville, Windsor, Butler)

Receipts: 3,791 Week ago: 4,918 Year ago: 3,944

Compared to last week, feeder calves 5.00 to 15.00 lower, spots 20.00 lower and yearlings 5.00 to 10.00 lower. Slaughter cows 3.00 to 8.00 lower.

FEEDER STEERS:

Medium and Large 1

300-400 lbs.	309.00-322.00
400-500 lbs.	266.00-323.00
500-600 lbs.	267.00-300.00
600-700 lbs.	240.00-287.00
750-800 lbs.	244.85-250.00
Pkg 802 lbs.	232.00

FEEDER HEIFERS:

Medium and Large 1

300-400 lbs.	264.00-291.00
400-500 lbs.	245.00-278.00
500-600 lbs.	230.00-262.00
600-700 lbs.	209.00-256.50
700-750 lbs.	230.50-242.00
Pkg 855 lbs.	190.00
Pkg 932 lbs.	205.00

SLAUGHTER BULLS: Yield Grade 1-2 1295-2115 lbs 108.50-120.00; high dressing 124.00-129.50, low dressing 91.00-107.50

SLAUGHTER COWS: Breaking and Boning (70-85% lean) 80.00-106.00, high dressing 96.00-113.00 low dressing 68.00-92.00. Lean (85-90%) 67.50-86.00

BRED COWS: Medium and Large 1-2 5-8 yrs 885-1260 lbs 2nd to 3rd stage 1250.00-1510.00 per head

COW & CALF PAIRS: Medium and Large 1-2 5-8 yrs 1125-1250 lbs with 150-300 lb calves 1825.00 -1835.00 per pair

NORTHEAST MISSOURI WEEKLY SUMMARY

(Bowling Green, Kingdom City, Palmyra)

Receipts: 3,574 Week ago: 3,795 Year ago: 3,140

Compared to last week, feeders under 600 lbs sold 5.00-15.00 lower, several pot load lots of yearling steers over 700 lbs sold 1.50-4.00 lower. Heifers over 700 lbs steady to firm. Slaughter cows sold steady to 5.00 lower.

FEEDER STEERS:

Medium and Large 1

400-500 lbs.	287.50-307.00
500-600 lbs.	260.50-299.50
600-700 lbs.	246.00-298.00
700-800 lbs.	235.00-255.50
800-900 lbs.	236.50-246.00

FEEDER HEIFERS:

Medium and Large 1

400-500 lbs.	246.00-267.00
500-600 lbs.	249.00-258.50
600-700 lbs.	237.50-259.10
700-800 lbs.	226.25-253.00
900-1000 lbs.	209.75-211.00

SLAUGHTER BULLS: Yield Grade 1-2 1400-2125 lbs 119.00-133.00; high dressing 137.00; low dressing 107.00-117.00

SLAUGHTER COWS: Breaking and Boning, (70-85% lean) 96.00-113.00; high dressing 106.00-124.00; low dressing 86.00-100.00. Lean (85-90%) 89.00-96.50

SLAUGHTER STEERS: Choice 2 -3 179.50-183.00 Select and Choice 1-3 174.00-176.50

SLAUGHTER HEIFERS: Choice 1-3 174.00-177.00

BRED COWS: Scarce

COW/CALF PAIRS: Scarce

NORTH CENTRAL MISSOURI WEEKLY SUMMARY

(Macon, Unionville, Green City, New Cambria)

Receipts: 3,030 Week ago: 1,203 Year ago: 2,286

Compared to last week, steers and heifers steady to 5.00 lower, spots 10.00 lower. Slaughter cows 3.00 to 5.00 lower.

*Some sale barns on a bi-weekly schedule and may not have a sale each week.

FEEDER STEERS:

Medium and Large 1

400-500 lbs.	288.00-319.00
500-600 lbs.	263.50-311.00
600-700 lbs.	256.00-276.00
700-800 lbs.	248.50-266.85
850-900 lbs.	233.75-245.50
900-950 lbs.	233.00-245.00

FEEDER HEIFERS:

Medium and Large 1

400-500 lbs.	252.00-277.50
500-600 lbs.	252.50-276.50
600-700 lbs.	238.00-256.60
43 hd 706 lbs.	250.75
39 hd 796 lbs.	212.10

SLAUGHTER BULLS: Yield Grade 1-2 1385-1845 lbs 105.00-107.00; high dressing 140.00-144.50.

SLAUGHTER COWS: Breaking and Boning, (70-85% lean) 85.00-110.00; high dressing 111.00-120.00; low dressing 77.50-100.00. Lean (85-90%) 77.50-96.00

BRED COWS: Scarce

COW & CALF PAIRS: Scarce

SOUTHEAST MISSOURI WEEKLY SUMMARY

(Jackson and Farmington)

Receipts: 1,345 Week ago: 2,157 Year ago: 1,126

Compared to last week, steers and heifers 6.00 to 16.00 lower. Slaughter cows steady and bulls steady to 2.00 higher.

FEEDER STEERS:
Medium and Large 1

300-400 lbs. 240.00-282.50
400-500 lbs. 247.00-285.00
500-600 lbs. 240.00-259.00
600-700 lbs. 220.00-249.00
700-800 lbs. 220.00-246.00
800-900 lbs.

FEEDER HEIFERS:
Medium and Large 1

300-400 lbs. 230.00-262.00
400-500 lbs. 220.00-240.00
500-600 lbs. 210.00-245.00
600-700 lbs. 180.00-230.00
pkg 788 lbs. 218.00

SLAUGHTER BULLS: Yield Grade 1-2 1150-2515 lbs. 90.00-106.00; high dressing 105.00-122.00

SLAUGHTER COWS: Breaking and Boning (75-85% lean) 78.00-92.00; high dressing 91.00-108.50. Lean (85-90% lean) 59.00-80.00

BRED COWS: Medium and Large 2 2-8 yrs 1000-1280 lbs 2nd stage 1075.00-1750.00, 1st stage 900.00-1200.00 per head

COW & CALF PAIRS: Scarce

EAST CENTRAL MISSOURI WEEKLY SUMMARY

(Cuba, Vienna)

Receipts: 1,192 Week ago: 1,402 Year ago: 1,385

Compared to last week, steers and heifers 8.00 to 15.00 lower on a limited test. Slaughter cows steady to 2.00 lower.

FEEDER STEERS:
Medium and Large 1

350-400 lbs. 307.00
400-500 lbs. 275.00-300.00
500-600 lbs. 246.00-285.50
600-700 lbs. 230.00-250.00
Pkg 854 lbs. 217.50

FEEDER HEIFERS:
Medium and Large 1

300-400 lbs. 245.00-249.00
400-500 lbs. 230.00-251.00
500-600 lbs. 221.00-253.50
600-700 lbs. 215.00-237.00

SLAUGHTER BULLS: Yield Grade 1-2 1320-2100 lbs 105.00-119.50; high dressing 112.50-124.00; low dressing 91.00-106.50.

SLAUGHTER COWS: Breaking and Boning, (70-85% lean) 89.50-104.00; high dressing 95.00-114.00; low dressing 80.00-90.00. Lean (85-90%) 81.00-92.00

BRED COWS: Medium and Large 1 5-8 yrs 1260-1400 lbs 2nd to 3rd stage 1725.00-1925.00. Medium and Large 1-2 2-8 yrs 925-1380 lbs 1st to 3rd stage 1400.00-2000.00 per head

COW & CALF PAIRS: Medium and Large 1 >5 yrs 1375-1550 lbs with 150-300 lb calves 2075.00-2900.00. Medium and Large 1-2 5-8 yrs 1090-1200 lbs with >300 lb calves 2200.00-2550.00 per pair

NORTHWEST MISSOURI WEEKLY SUMMARY

(Tina)

Receipts: 1470 Week Ago: 1660 Year Ago: 1466

Compared to last week, steers and heifers 8.00 to 12.00 lower. Slaughter cows and bulls 2.00 to 4.00 lower.

FEEDER STEERS:
Medium and Large 1

Pkg 360 lbs. 300.00
400-500 lbs. 302.50-304.00
500-550 lbs. 277.00-284.00

FEEDER HEIFERS:
Medium and Large 1

350-400 lbs. 262.50-287.50
450-500 lbs. 267.00-268.75

SLAUGHTER BULLS: Yield Grade 1-2 1460-2075 lbs 110.00-124.00

SLAUGHTER COWS: Breaking and Boning, (70-85% lean) 83.00-107.00; high dressing 108.50-113.50. Lean (85-90%) 79.00-101.50

BRED COWS: Medium and Large 1 2-8 yrs 985-1776 lbs 2nd and 3rd stage 1350.00-2050 per head.

COW & CALF PAIRS: Medium and Large 1 2-8 yrs 1060-1770 lbs with baby to 150 lb calves 1460.00-3050.00 per pair.

AFTERNOON NATIONAL SLAUGHTER CATTLE REVIEW

Thus far for Friday in the Southern Plains negotiated cash trade has been moderate on trade and demand. Compared to last week in the Texas Panhandle live FOB purchases traded mostly steady at 185.00. Compared to last week in Kansas live FOB purchases traded steady to 1.00 higher mostly at 185.00, with a few up to 186.00. In Nebraska and the Western Cornbelt negotiated cash trade has been slow on moderate demand. There were a few live FOB purchases at 186.00 in Nebraska, however not enough purchases for a market trend. The most recent market in Nebraska was Thursday with live FOB purchases from 183.00-185.00. There has been a few dressed delivered in Nebraska purchases from 290.00-292.00, however not enough for a market test. The most recent dressed delivered in Nebraska and the Western Cornbelt market was Wednesday with purchases at 290.00. The most recent live FOB market in the Western Plains was Thursday purchases traded from 183.00-185.00, mostly at 184.00.

Negotiated Cash Sales:

Confirmed:	15,680	Week Ago:	11,203	Year Ago:	10,873
Week to date:	70,740	Week Ago:	89,212	Year Ago:	81,773

<u>Live Basis</u>	<u>Steers</u>	<u>Heifers</u>
Over 80% Choice	183.00-186.00 avg 184.73	183.00-186.00 avg 185.35
65-80% Choice	184.00-186.00 avg 185.09	183.00-186.00 avg 184.94
35-65% Choice	184.00-185.00 avg 184.76	185.00-185.00 avg 185.00
0-35% Choice	-	-
Total All Grades	183.00-186.00 avg 184.94	183.00-186.00 avg 185.12
Dressed Basis		
Over 80% Choice	287.00-292.00 avg 289.86	-
65-80% Choice	-	290.00-290.00 avg 290.00
35-65% Choice	-	-
0-35% Choice	-	-
Total All Grades	287.00-292.00 avg 289.86	290.00-290.00 avg 290.0

<u>All Beef Type Steers/Heifers</u>	<u>Head</u>	<u>Avg Wt</u>	<u>Price Range</u>	<u>Wtd Avg</u>
Live FOB	14,202	1365.30	183.00-186.00	184.96
Live Del	339	1421.50	182.00-184.00	182.72
Dressed Del	1,098	923.60	287.00-292.00	289.93
Dressed FOB	-	-	-	-

WEEKLY COMMODITY FUTURES TRENDS

Compared to last week, Live Cattle 0.27 to 5.52 lower, Lean Hogs 1.68 to 4.47 higher, Feeder Cattle 3.07 to 6.52 lower.

Daily Futures Closes

	Mon.	Tues.	Wed.	Thu.	Fri.
Cattle					
Oct	178.25	180.00	181.12	181.70	184.00
Dec	178.35	178.62	179.42	179.32	182.22
Feb	180.97	180.85	181.50	180.40	182.95
Apr	183.72	183.42	183.82	182.90	184.90
Jun	178.37	177.90	178.42	177.70	179.10
Lean Hogs					
Dec	66.17	66.37	67.50	68.62	70.47
Feb	70.20	69.47	70.70	71.82	73.50
Apr	76.60	75.55	76.77	77.65	78.92
May	82.47	81.82	82.97	83.62	84.75
Jun	90.67	89.80	90.75	91.45	92.45
Fdr Cat					
Oct	237.62	239.42	239.97	240.55	—
Nov	235.80	235.42	238.05	236.50	236.90
Jan	235.70	234.85	236.55	235.07	235.70
Mar	238.37	237.62	239.22	237.75	238.57
Apr	242.80	242.25	243.57	241.92	242.65
Milk					
Oct	16.86	16.88	16.89	16.84	16.85
Nov	17.83	17.67	17.55	17.55	17.40
Dec	17.89	17.56	17.38	17.42	17.29

WEEKLY COMMODITY GRAIN FUTURES TRENDS

Compared to last week, Soybeans Nov 0.04 lower, others unch to 0.04 higher, Wheat 0.10 to 0.11 lower, Corn 0.09 to 0.14 lower, KC Wheat 0.17 to 0.27 lower, Soybean Meal 5.90 to 18.50 higher.

Daily Grain Futures Closes

	Mon.	Tues.	Wed.	Thu.	Fri.
Soybeans					
Nov	1286 3/4	1295 1/4	1288 1/4	1279 1/2	1297 1/4
Jan	1305 1/2	1314 1/2	1308 1/2	1300 1/4	1319 1/2
Mar	1318 1/4	1326	1321 3/4	1313 3/4	1333 1/4
May	1332	1339	1335 1/4	1327 3/4	1346 3/4
Jul	1339 1/4	1346	1341 3/4	1334 3/4	1353 3/4
Wheat					
Dec	587 1/4	580 1/2	568 1/2	579 1/2	575 1/2
Mar	615	607 1/2	596 1/4	606	602 1/2
May	631 1/2	623 3/4	613 1/2	622 1/4	619
Jul	645 1/4	637 1/2	629	636 1/2	633 3/4
Sep	658	650 1/2	643 1/2	650 1/4	647 3/4
Corn					
Dec	490 1/4	484	480	479 1/4	480 3/4
Mar	504	498	494 1/2	493 1/4	495 1/4
May	512	506	503	501 1/4	503 1/2
Jul	517 1/4	511 3/4	508 3/4	507 1/4	509 1/2
Sep	514 1/2	509 3/4	506 1/2	505 1/4	507 3/4
KC Wheat					
Dec	670 3/4	663	649	654 3/4	643
Mar	680 1/4	671 3/4	659 1/2	665 1/4	655 3/4
May	686 3/4	678	666 1/4	671 3/4	663 3/4
Jul	690 1/2	681 3/4	671 1/4	676 1/4	670 1/4
Sep	698 1/4	690	680 1/2	685	680
SB Meal					
Dec	420.50	434.20	429.20	429.50	442.40
Jan	411.30	422.80	417.30	415.90	426.70
Mar	402.50	412.00	406.30	404.40	412.30
May	399.90	407.90	401.60	400.30	406
Jul	400.60	407.10	400.80	399.90	404.70

MISSOURI GRAIN WEEKLY TRENDS

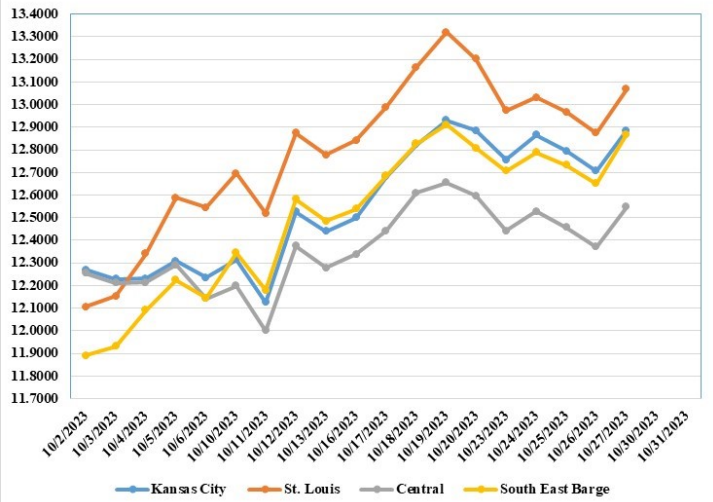
Compared to last week, Soybeans 0.14 lower to 0.15 higher, Wheat 0.10 to 0.11 lower, Corn 0.05 to 0.32 lower, Sorghum 0.15 lower.

Area	#1 Soybeans	#2 Soft Wheat	#2 Corn	#2 Grain Sorghum
Kansas City				
Friday**	12.62-13.17	5.41	4.71-4.86	5.21
Monday	12.57-13.02	5.42	4.65-4.80	5.15
Tuesday	12.65-13.10	5.36	4.64-4.84	5.09
Wednesday	12.58-13.03	5.23	4.60-4.80	5.05
Thursday	12.50-12.95	5.35	4.59-4.79	5.04
Friday	12.67-13.12	5.30	4.60-4.80	5.05
St. Louis				
Friday**	13.20	5.94-6.06	5.13-5.14	5.71
Monday	12.95-13.00	5.95-5.98	4.93-4.98	5.65
Tuesday	13.03	5.89-5.92	4.84-4.86	5.59
Wednesday	12.96-12.97	5.76-5.79	4.78-4.82	5.55
Thursday	12.88	5.88-6.01	4.79-4.83	5.54
Friday	13.06-13.07	5.83-5.96	4.80-4.85	5.55
Central				
Friday**	12.57-12.62	5.16-5.36	4.76	—
Monday	12.42-12.47	5.17-5.37	4.70	—
Tuesday	12.50-12.55	5.11-5.31	4.64	—
Wednesday	12.43-12.48	4.98-5.18	4.60	—
Thursday	12.35-12.40	5.10-5.30	4.59	—
Friday	12.52-12.57	5.05-5.25	4.60	—
S.E. MO				
Friday**	12.62-12.92	—	4.91-4.96	—
Monday	12.57-12.77	—	4.85-4.90	—
Tuesday	12.64-12.85	—	4.74-4.79	—
Wednesday	12.63-12.78	—	4.65-4.75	—
Thursday	12.55-12.72	—	4.68-4.74	—
Friday	12.78-12.92	—	4.70-4.75	—

(PRICES PER BUSHEL) *NEW CROP **PREVIOUS WEEK'S PRICES
*Bids calculated using Kansas City, St. Louis, and St. Joseph bids

MONTHLY GRAIN CROP

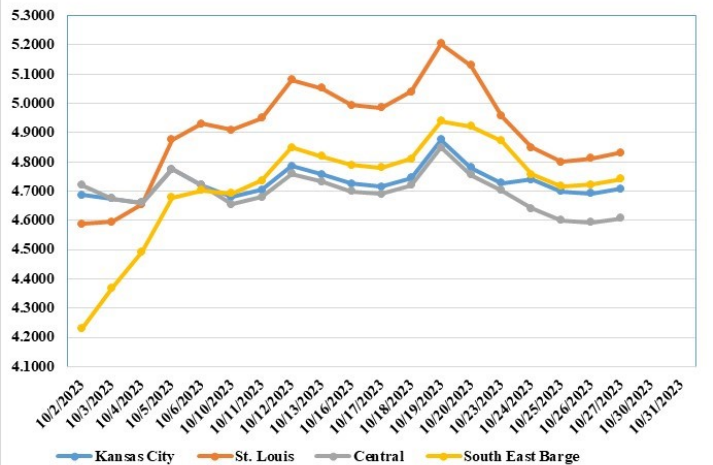
October 2023 Soybean Bids



October 2023 Wheat Bids



October 2023 Corn Bids



*Axis value ranges may be updated to reflect data points.

**WHOLESALE FEEDSTUFFS PRICES
(DOLLARS PER TON-BULK BASIS)**

Area	Soybean Hulls Pellets	Soybean Meal 46.5-48%	Corn Gluten Pellets 21%	Wheat Middlings
Kansas City	195.00	449.90	255.00	180.00
St. Louis	n/a	n/a	262.50	160.67

COLD STORAGE

September 2023 Highlights

Total natural cheese stocks in refrigerated warehouses on September 30, 2023 were down 2 percent from the previous month but up slightly from September 30, 2022.

Butter stocks were down 6 percent from last month but up 3 percent from a year ago.

Total frozen poultry supplies on September 30, 2023 were down 1 percent from the previous month and down slightly from a year ago. Total stocks of chicken were up 2 percent from the previous month but down 3 percent from last year. Total pounds of turkey in freezers were down 6 percent from last month but up 7 percent from September 30, 2022.

Total frozen fruit stocks were up 9 percent from last month and up 1 percent from a year ago.

Total frozen vegetable stocks were up 12 percent from last month and up 1 percent from a year ago.

Total red meat supplies in freezers were up 2 percent from the previous month but down 17 percent from last year. Total pounds of beef in freezers were up 6 percent from the previous month but down 20 percent from last year. Frozen pork supplies were down 1 percent from the previous month and down 14 percent from last year. Stocks of pork bellies were down 19 percent from last month and down 19 percent from last year.

MISSOURI WEEKLY SHEEP/GOAT AUCTION SUMMARY

Receipts: 3,276 Week Ago: 1,765 Last Year: 946

SHEEP: Feeder Lambs: Medium and Large 1-2 45-47 lbs 180.00-210.00. Small and Medium 1-2 25-50 lbs 200.00-280.00. Slaughter Lambs: woolled and shorn Choice 1-3 pkg 58 lbs 230.00; 65-80 lbs 165.00-179.00. hair Choice and Prime 1-3 50-60 lbs 198.00-272.50; 60-70 lbs 195.00-240.00; 70-80 lbs 181.00-220.00; 80-100 lbs 157.50-185.00; 115-120 lbs 135.00-140.00. Choice 1-3 50-75 lbs 159.00-225.00; 80-120 lbs 116.00-145.00. Ewes Cull and Utility 1-2 few 100 lbs 50.00. Hair Good 2 -3 100-150 lbs 89.00-106.00. Utility and Good 1-3 50-150 lbs 70.00-88.00. Cull and Utility 1-2 few 128 lbs 54.00. Bucks Hair 1-2 135-230 lbs 80.00-135.00.

GOATS: Feeder Kids: Selection 1 35-50 lbs 242.00-280.00. Selection 2 25-50 lbs 190.00-240.00. Selection 3 25-50 lbs 115.00-175.00; pygmies 115.00-150.00. Slaughter Kids Selection 1 50-75 lbs 240.00-300.00 pkg fancy 340.00. Selection 2 50-75 lbs 198.00-235.00. Selection 3 50-65 lbs 110.00-190.00. Nannies Selection 1-2 55-150 lbs 80.00-132.50. Bucks Selection 1-2 62-180 lbs 96.00-190.00. Wethers 1-2 70-106 lbs 200.00-250.00.

Explanatory Notes: Stage - Represents estimated lambing/kidding period (Open, Exp=exposed, Bred, Fall = Sep-Nov, Win = Dec-Feb, Spr = Mar-May, Sum=Jun-Aug; w/s = woolled and shorn; /hd= per head; /fam=per family All price CWT unless otherwise noted.

MISSOURI DROUGHT MONITOR

Date	None	D0	D1	D2	D3	D4
10/24/23	13.76	19.56	33.22	23.16	10.30	0
10/17/23	15.32	21.91	30.96	21.51	10.30	0
10/25/22	0	21.24	36.42	32.10	10.24	0

Reflects percentage of Missouri impacted by drought. D0 Abnormally Dry; D1 Moderate Drought; D2 Severe Drought; D3 Extreme Drought; D4 Exceptional Drought

NATIONAL DIRECT DELIVERED FEEDER PIG REPORT

10/27/23 Receipts: 113,593 Week ago: 124,484 Year Ago: 107,354 Early weaned pigs and feeder pigs steady. Early weaned pigs 10-12 lbs. basis: Cash 63,895 head 12.00-30.00, weighted average 23.42. Formula 40,848 head 27.06-50.17, weighted average 38.45 Feeder pigs 40 pounds basis: Cash 8,850 head 30.00-45.00, weighted average 36.20

NATIONAL DAILY DIRECT PRIOR DAY HOG REPORTS FOR 10/27/23

BARROWS AND GILTS (Carcass Basis): 3,207 head Base Carcass Price 67.00-74.00, weighted average 70.93

SOWS (Live Basis): 6,221 head
300-500 lbs. 19.00-56.00
Over 500 lbs. 28.03-60.00

MISSOURI WEEKLY DIRECT SLAUGHTER CATTLE REPORT 10/27/23

Weekly Receipts: 400 Week ago: 200 Year ago: 240 Trading as of Friday morning, trade is light to moderate with flat dressed sales 2.00 to 4.00 lower. Grid dressed sales inactive this week.

LIVE STEERS & HEIFERS: No sales reported
DRESSED STEERS & HEIFERS: 3 loads flat Wed 288.00; 7 loads flat Thu 290.00.

GRADE AND WEIGHT (Grid): No sales reported

MISSOURI CROP PROGRESS AND CONDITION

	Week Ending			2018-2022 Average
	10/22/23	10/15/23	10/22/22	
Corn harvested	75	65	76	73
Soybeans harvested	61	46	56	42
Cotton harvested	67	45	51	50
Winter wheat planted	50	32	49	43
Winter wheat emerged	16	6	17	22
Rice harvested	93	90	96	90

MISSOURI WEEKLY HAY SUMMARY 10/26/23

Grain harvest continues to progress along ahead of average pace. Still a few guys that have hay equipment out in the fields as well as a lot of stalks being baled around the state. For the most part moisture was very limited this week. Temperatures are cooling with the first hard freeze of the year likely coming early next week. Feeding season is approaching and livestock famers continue to move some hay around trying to cover anticipated needs sooner rather than later. Hay prices are steady and demand is moderate. The Missouri Department of Agriculture has a hay directory visit <http://mda.mo.gov/abd/haydirectory/> for listings of hay <http://agebb.missouri.edu/haylst/>
Alfalfa - Supreme 250.00-300.00, small square 10.00-15.00 per bale
Alfalfa - Premium 200.00-250.00
Alfalfa - Good 150.00-200.00, small square 5.00-10.00 per bale
Alfalfa - Fair 125.00-150.00
Alfalfa/grass mix - Good/Premium small square 5.00-10.00 per bale
Mixed grass - Good/Premium 150.00-225.00
Mixed grass - Fair/Good 100.00-175.00, small square 5.00-8.00 per bale
Mixed grass - Fair 50.00-100.00 per large round bale

Please Note: The above volumes (tonnage, acres, and bales) listed are for confirmed trades only, it does not include estimated volume (tonnage) for bids or offers to the trade. List your hay for sale at: [Hay Listing Online Form](#). Explanation of Hay Quality Guidelines: [Hay Quality Designation Guidelines](#). Glossary of Terms: [Livestock, Poultry, & Grain Hay Terms](#)

Click here for the current [National Crop Progress](#)
Click here for the current [Missouri Crop Progress](#)
The current hay directory can be found at: [Hay Directory](#).