

# Weekly Market Summary

Published by:  
**Missouri Department of Agriculture**  
**Ag Business Development Division**  
**Market News Program**



Chris Chinn, Director  
 Jill Wood, Division Director  
 Tony Hancock, Editor  
<http://www.ams.usda.gov/marketnews.htm>  
[agmarketnews.mo.gov](http://www.ams.usda.gov/marketnews.htm)

Michael L. Parson, Governor

Volume XLIII, Number 46 ♦ P.O. Box 630, Jefferson City, MO 65102 ♦ (573) 751-4211 ♦ Mon, Nov 20, 2023

## MISSOURI WEEKLY FEEDER CATTLE WEIGHTED AVERAGE REPORT

Receipts: 24,409 Week ago: 35,458 Year ago: 32,921

Steers and Heifers Medium and Large 1—Weighted average weights and prices

### STEERS: Medium and Large 1

338 lbs. 309.11	521 lbs. 270.91	720 lbs. 241.55	926 lbs. 217.64
368 lbs. 300.51	571 lbs. 263.66	764 lbs. 235.25	960 lbs. 215.23
429 lbs. 292.18	620 lbs. 248.65	838 lbs. 228.90	1003 lbs. 203.50
473 lbs. 287.19	673 lbs. 241.25	856 lbs. 228.06	

### HEIFERS: Medium and Large 1

280 lbs. 246.74	476 lbs. 250.80	668 lbs. 214.92
330 lbs. 246.44	525 lbs. 235.20	728 lbs. 223.43
372 lbs. 259.47	575 lbs. 224.65	760 lbs. 215.65
427 lbs. 252.33	617 lbs. 227.86	816 lbs. 209.64

## MISSOURI STEER (HEIFER) STOCKER FORMULA 11/20/2023

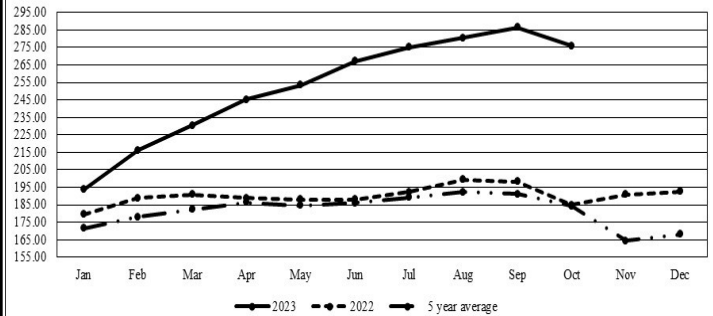
Monday's Missouri Stocker formula consists of **5234 (4799)** head with a weighted average weight of **541.85 (533.71)** lbs. and a price value of **256.95 (224.85)**, 6.99 lower (7.87 lower) than last week.

This a rolling seven day calculated weighted value which combines all Feeder Steers reported by MDA/USDA Market News Service weighing from 400-649 lbs. in the Medium and Large 1 and Medium and Large 1-2 frame and muscle classifications, including all comment cattle except Brahman X. Heifer values are in parentheses.

## MISSOURI WEEKLY CATTLE AUCTION SUMMARY

Compared to last week, feeders sold 5.00 to 10.00 lower, although there was exceptions on some calves of high quality and verified health programs which sold steady to 5.00 higher at a few sales around the state this week. The supply was moderate and mostly calves as it typical for this season. Demand was moderate the lack of any sustained stable cold has buyers continuing to want cattle that have a legit health program along with a good 45-60 day minimum weaning. The lower markets over the last few weeks has made any 300.00 plus five weight steers basically non-existent. Only three small packages totally less than 25 head in the entire state found prices passing or very near the 300.00 mark this week. One stick out sale was 63 head of 902 lb. steers at Lolli Brothers Livestock Market that sold for 237.85. A couple of loads of high quality light 7 weight heifers sold for 236.50 and 237.85 which was a good ticket as of late. The monthly cattle on feed report was released on Friday. On feed and marketing's came in even with pre-report estimates. Placements were reported at 104.00 which was about 2 percent below the average but within the ranges of estimates. It should be noted that was comparing to the lowest Oct. placements on record last year. Boxed beef cutouts were mixed for the week with the choice no longer able to maintain a level above 300.00. Friday saw the choice close at 293.87, down 6.59 and select closed at 270.70, up 3.28 compared to last week. Negotiated feedlot sales as of the Friday afternoon came in 58K head chain speed continues to be slow as packers reduce slaughter thus reducing need to negotiate for any cattle. Live sales were reported mostly from 178.00 and dressed sales at 282.00. Missouri Stocker formula consists of 5234 head with a weighted average weight of 541.85 lbs. and a price value of 256.95, 6.99 lower than a week ago. The steer/heifer spread is 31.65.

Missouri Stocker Formula - Steers

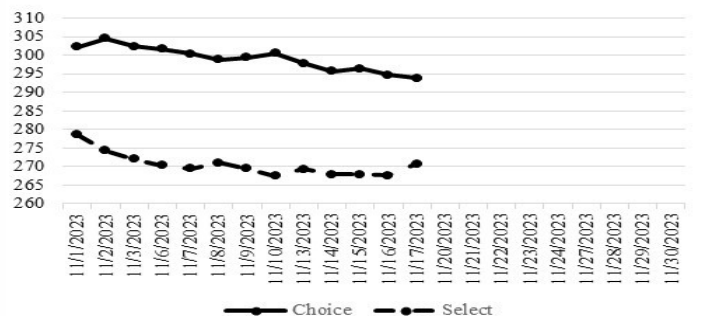


\*Graph is updated the first Monday of each month. Axis value ranges may be updated to reflect data points.

## NATIONAL BOXED BEEF CUTOUT/BOXED BEEF CUTS

<u>DATE</u>	<u>CHOICE</u>	<u>SELECT</u>	<u>TOTAL LOADS</u>
11/13	297.85	269.24	93
11/14	295.67	267.88	144
11/15	296.33	267.85	141
11/16	294.72	267.65	135
11/17	293.87	270.70	85
<b>5 Day Simple Average</b>	<b>295.69</b>	<b>268.66</b>	

Boxed Beef Cuts November 2023



\*Axis value ranges may be updated to reflect data points.

## WEEKLY LIVESTOCK SLAUGHTER 11/18/23

	<u>CATTLE</u>	<u>HOGS</u>	<u>SHEEP</u>
Week to Date:	636,000	2,649,000	39,000
Last Week:	618,000	2,577,000	38,000
Last Year:	672,000	2,598,000	37,000

The Weekly Market Summary, as well as historical summaries, are available on our website <https://agmarketnews.mo.gov/summaries>  
 Market News Hotline: 1-573-522-9244

**SOUTHWEST MISSOURI WEEKLY SUMMARY**

(Joplin and Springfield)

Receipts: 13,311 Week ago: 10,495 Year Ago: 12,429

Compared to last week, feeders early week 6.00 to 12.00 lower, late week steers mostly 4.00 to 8.00 higher and heifers uneven from 3.00 lower to 5.00 higher. Slaughter cows steady to 3.00 lower, spots 5.00 lower.

**FEEDER STEERS:**  
Medium and Large 1

300-400 lbs.	282.50-330.00
400-500 lbs.	280.00-312.50
500-600 lbs.	245.00-286.00
600-700 lbs.	230.00-263.00
700-800 lbs.	223.00-245.50
800-900 lbs.	223.00-236.00
900-1000 lbs.	210.00-226.50

**FEEDER HEIFERS:**  
Medium and Large 1

350-400 lbs.	265.00-275.00
400-500 lbs.	236.00-265.00
500-600 lbs.	214.00-247.00
600-700 lbs.	204.00-231.00
700-750 lbs.	197.50-216.00
800-850 lbs.	209.00-209.75

**FEEDER HOLSTEIN STEERS**  
Large 3

Scarce Scarce

**SLAUGHTER COWS:** Breaking and Boning (70-85% Lean) 80.00-98.00, high dressing 94.00-116.00; low dressing 77.50-89.00. Lean (85-90%) 75.00-90.50

**SLAUGHTER BULLS:** Yield Grade 1-2 1205-2250 lbs. 104.00-116.00; high dressing 115.00-125.00; low dressing 85.00-106.00

**BRED COWS:** Medium and Large 1 2-8 yrs 1058-1670 lbs 1st/2nd/3rd stage 1575.00-2450.00; >8 yrs 1204-1380 lbs 2nd/3rd stage 1500.00-1525.00 per head.

**BRED HEIFERS:** Medium and Large 1 <2 yrs 965-1144 lbs 1st/2nd/3rd stage 1685.00-2500.00; 2-4 yrs 1090-1235 lbs 2nd/3rd stage 1650.00-2400.00 per head

**COW & CALF PAIRS:** Medium and Large 1 2-8 yrs 1045-1310 lbs with <150 to >300 lb calves 1950.00-2675.00. Medium and Large 1-2 2-8 yrs 920-1775 lbs with <150 to 300 lb calves 1400.00-2400.00; 2-8 yrs 1160-1405 lbs rebred 1st/2nd stage with 150 to >300 lb calves 1675.00-2450.00 per pair

**SOUTH CENTRAL MISSOURI WEEKLY SUMMARY**

(West Plains, Phillipsburg)

Receipts: 4,233 Week ago: 5,452 Year Ago: 6,209

Compared to last week, feeders early week 2.00 to 8.00 lower, late week mostly 3.00 to 8.00 higher, spots 12.00 higher. Slaughter cows and bulls mostly steady.

**FEEDER STEERS:**  
Medium and Large 1

300-400 lbs.	297.50-329.00
400-500 lbs.	279.00-307.00
500-600 lbs.	247.00-280.00
600-700 lbs.	230.00-255.00
700-750 lbs.	225.00-236.00
800-900 lbs.	215.00-220.75

**FEEDER HEIFERS:**  
Medium and Large 1

300-400 lbs.	246.00-260.00
400-500 lbs.	240.00-258.00
500-600 lbs.	212.00-244.00
600-700 lbs.	202.50-209.50
700-800 lbs.	192.50-198.00

**FEEDER HOLSTEIN STEERS**  
Large 3

Scarce Scarce

**SLAUGHTER COWS:** Breaking and Boning (70-85% lean) 80.00-97.00, high dressing 95.00-108.00; low dressing 72.00-87.00. Lean (85-90%) 70.00-88.00

**SLAUGHTER BULLS:** Yield Grade 1-2 1255-2225 lbs. 105.00-120.00; high dressing 120.00-131.00; low dressing 85.00-103.00

**BRED COWS:** Medium and Large 1-2 2-8 yrs 950-1875 lbs 2nd/3rd stage 1050.00-1700.00 per head

**BRED HEIFERS:** Medium and Large 1-2 <2 yrs 930 lbs 2nd/3rd stage 1350.00 per head

**COW & CALF PAIRS:** Medium and Large 1-2 2-8 yrs 1010-1300 lbs with 150-300 lb calves 1700.00-1800.00 per pair

**WEST CENTRAL MISSOURI WEEKLY SUMMARY**

(Kingsville, Windsor, Butler)

Receipts: 4,675 Week ago: 8,161 Year ago: 6,302

Compared to last week, steers and heifers sold steady to 5.00 lower. Slaughter cows sold mostly steady.

**FEEDER STEERS:**  
Medium and Large 1

350-400 lbs.	300.00-320.00
400-500 lbs.	260.00-310.00
500-600 lbs.	240.00-294.00
600-700 lbs.	242.00-273.00
Pkg 828 lbs.	233.00
Pkg 909 lbs.	219.50

**FEEDER HEIFERS:**  
Medium and Large 1

300-400 lbs.	230.00-267.50
400-500 lbs.	232.00-274.00
500-600 lbs.	215.00-250.00
600-700 lbs.	218.00-235.00
700-800 lbs.	218.00-236.50

**SLAUGHTER BULLS:** Yield Grade 1-2 1165-2195 lbs 105.00-117.00; high dressing 112.50-120.00, low dressing 92.50-100.00

**SLAUGHTER COWS:** Breaking and Boning (70-85% lean) 80.00-100.50, high dressing 90.50-103.00 low dressing 77.00-85.00. Lean (85-90%) 71.00-84.00

**BRED COWS:** Medium and Large 1 5-8 yrs 1420 lbs 2nd/3rd stage 1475.00. Medium and Large 1-2 5-8 yrs 1335-1595 lbs 2nd/3rd stage 1450.00-1485.00 per head

**COW & CALF PAIRS:** Scarce

**NORTHEAST MISSOURI WEEKLY SUMMARY**

(Bowling Green, Kingdom City, Palmyra)

Receipts: 3,189 Week ago: 6,294 Year ago: 4,116

Compared to last week, early week steers under 700 lbs mostly 10.00 to 20.00 lower, yearling steers and heifers very uneven mostly 10.00 to 13.00 lower, late week yearlings firm undertone. Slaughter cows early week 3.00 to 5.00 lower, late week steady to 3.00 higher.

**FEEDER STEERS:**  
Medium and Large 1

450-500 lbs.	262.00-270.00
500-600 lbs.	249.50-268.00
700-800 lbs.	227.75-232.00
800-900 lbs.	224.00-233.50
50 hd 967 lbs.	215.50

**FEEDER HEIFERS:**  
Medium and Large 1

550-600 lbs.	226.00-230.00
88 hd 613 lbs.	235.75
66 hd 732 lbs.	230.00

**SLAUGHTER BULLS:** Yield Grade 1-2 1400-2210 lbs 115.00-129.00; low dressing 93.00-115.00

**SLAUGHTER COWS:** Breaking and Boning, (70-85% lean) 83.00-105.00; high dressing 94.50-119.50; low dressing 75.00-92.00. Lean (85-90%) 75.00-91.00

**SLAUGHTER STEERS:** Choice 2-3 172.00-174.00. Select and Choice 1-2 162.50-164.00.

**SLAUGHTER HEIFERS:** Choice and Prime 3-4 175.50-176.00. Choice 2-3 172.00-175.50

**BRED COWS:** Medium and Large 1-2 2-8 yrs 1055-1634 lbs 2nd/3rd stage 1625.00-2025.00; >5 yrs 1200-1498 lbs 2nd/3rd stage 1250.00-1475.00 per head

**COW/CALF PAIRS:** Medium and Large 1-2 >5 yrs 1350-1400 lbs with <150 lb calves 1600.00-2025.00; 2-8 yrs 1200-1700 lbs with 150-300 lb calves 2175.00-2975.00 per pair

**NORTH CENTRAL MISSOURI WEEKLY SUMMARY**

(Macon, Unionville, Green City, New Cambria)

Receipts: 3,420 Week ago: 3,569 Year ago: 4,705

Compared to last week, steers and heifers uneven from 5.00 lower to 5.00 higher. Slaughter cows steady to 3.00 lower.

\*Some sale barns on a bi-weekly schedule and may not have a sale each week.

**FEEDER STEERS:**  
Medium and Large 1

400-500 lbs.	272.00-295.00
500-600 lbs.	253.00-285.00
600-700 lbs.	235.00-264.50
700-750 lbs.	252.00-255.25
30 hd 827 lbs.	234.75
63 hd 902 lbs.	237.85

**FEEDER HEIFERS:**  
Medium and Large 1

400-500 lbs.	248.00-285.00
500-550 lbs.	233.00-246.75
600-650 lbs.	236.50-242.50
76 hd 721 lbs.	237.85

**SLAUGHTER BULLS:** Yield Grade 1-2 1455-2350 lbs 115.00-133.00; low dressing couple 110.00-113.00

**SLAUGHTER COWS:** Breaking and Boning, (70-85% lean) 90.00-102.00; high dressing 102.00-116.00; low dressing 83.50-92.00. Lean (85-90%) 83.00-95.00

**BRED COWS:** Scarce

**COW & CALF PAIRS:** Scarce

**SOUTHEAST MISSOURI WEEKLY SUMMARY**

(Jackson and Farmington)

Receipts: 1,186 Week ago: 1,621 Year ago: 1,745

Compared to last week, steers and heifers uneven from 8.00 lower to 6.00 higher. Slaughter cows 1.00 lower to 2.00 higher. Slaughter bulls steady.

**FEEDER STEERS:**

Medium and Large 1

300-400 lbs.	247.50-285.00
400-500 lbs.	245.00-277.00
500-600 lbs.	235.00-268.00
600-700 lbs.	227.00-245.00
700-800 lbs.	216.00-236.00
12 hd 911 lbs.	215.00

**FEEDER HEIFERS:**

Medium and Large 1

300-400 lbs.	225.00-247.00
400-500 lbs.	210.00-239.00
500-600 lbs.	215.00-234.00
600-700 lbs.	210.00-227.00
700-800 lbs.	206.00-219.00

**SLAUGHTER BULLS:** Yield Grade 1-2 1360-2175 lbs. 90.00-107.00; high dressing 105.50-119.00

**SLAUGHTER COWS:** Breaking and Boning (75-85% lean) 70.00-89.00; high dressing 87.00-103.00. Lean (85-90% lean) 65.00-78.00

**BRED COWS:** Medium and Large 2 2-8 yrs 1075-1450 lbs 2nd to 3rd stage 1000.00-1850.00; >8 yrs 1100-1260 lbs 2nd to 3rd stage 925.00-1125.00 per head

**COW & CALF PAIRS:** Medium and Large 2 2-8 yrs 1000-1500 lbs some rebred with 150 to >300 lb calves 1200.00-2900.00 per pair

**EAST CENTRAL MISSOURI WEEKLY SUMMARY**

(Cuba, Vienna)

Receipts: 2,562 Week ago: 4,003 Year ago: 3,448

Compared to last week, steers and heifers mostly 5.00 to 7.00 higher on comparable sales. Slaughter cows and bulls steady to 4.00 lower.

**FEEDER STEERS:**

Medium and Large 1

400-500 lbs.	260.00-315.50
500-600 lbs.	249.00-301.00
600-700 lbs.	234.00-266.00
700-800 lbs.	232.00-239.00
12 hd 880 lbs.	215.00-234.50

**FEEDER HEIFERS:**

Medium and Large 1

400-500 lbs.	235.00-271.00
500-600 lbs.	226.00-254.00
600-700 lbs.	208.00-240.50

**SLAUGHTER BULLS:** Yield Grade 1-2 1185-2170 lbs 104.00-118.00; low dressing 90.00-104.00

**SLAUGHTER COWS:** Breaking and Boning, (70-85% lean) 82.00-97.50; high dressing 94.50-103.00; low dressing 78.50-82.00. Lean (85-90%) 77.50-89.00

**BRED COWS:** Medium and Large 1-2 2-8 yrs 1055-1465 lbs 2nd to 3rd stage 1300.00-1650.00 per head

**COW & CALF PAIRS:** Scarce

**NORTHWEST MISSOURI WEEKLY SUMMARY**

(Tina)

Receipts: 714 Week Ago: 1,745 Year Ago: 1,664

Compared to last week, steers and heifers 6.00 to 10.00 lower. Slaughter cows and bulls 2.00 to 4.00 lower.

**FEEDER STEERS:**

Medium and Large 1

450-500 lbs.	251.00-282.00
500-600 lbs.	244.00-271.00
Pkg 610 lbs.	240.00

**FEEDER HEIFERS:**

Medium and Large 1

400-500 lbs.	240.00-253.00
550-600 lbs.	230.00-237.00
600-650 lbs.	220.00-226.00

**SLAUGHTER BULLS:** Yield Grade 1-2 1330-2170 lbs 103.00-118.00; few low dressing 87.00-95.00.

**SLAUGHTER COWS:** Breaking and Boning, (70-85% lean) 80.00-103.00; high dressing 103.50-109.00; low dressing 71.00-79.00. Lean (85-90%) 78.00-93.50

**BRED COWS:** Medium and Large 1-2 2-8 yrs 1150-1215 lbs 2nd to 3rd stage 1400.00-1500.00 per head

**COW & CALF PAIRS:** Medium and Large 1-2 couple 2-8 yrs 1225-1375 lbs with baby to 300 lb calves 1525.00-1750.00 per pair

**AFTERNOON NATIONAL SLAUGHTER CATTLE REVIEW**

Thus far for Friday in the Southern Plains negotiated cash trade was mostly inactive on light demand. The most recent market in the Texas Panhandle was Thursday with live FOB purchases traded at 178.00. The most recent market in Kansas was Thursday with live FOB purchases traded at 178.00. In Nebraska and the Western Cornbelt negotiated cash trading cash trading was limited on light demand. The most recent market in Nebraska was Thursday with live FOB purchases traded at 178.00. The most recent market was Thursday dressed delivered was Wednesday at 282.00. The most recent market in the Western Cornbelt was Thursday with live FOB purchases traded at 178.00. The most recent market in the Western Cornbelt was Thursday with dressed delivered purchases traded at 282.00.

**Negotiated Cash Sales:**

<b>Confirmed:</b>	5,834	<b>Week Ago:</b>	2,631	<b>Year Ago:</b>	4,015
<b>Week to date:</b>		<b>Week Ago:</b>		<b>Year Ago:</b>	

<u>Live Basis</u>	<u>Steers</u>	<u>Heifers</u>
<b>Over 80% Choice</b>	177.00-178.00, avg 177.60	177.00
<b>65-80% Choice</b>	-	-
<b>35-65% Choice</b>	-	-
<b>0-35% Choice</b>	-	-
<b>Total All Grades</b>	177.00-178.00, avg 177.60	177.00
<u>Dressed Basis</u>		
<b>Over 80% Choice</b>	278.00-282.00, avg 278.80	282.00
<b>65-80% Choice</b>	-	-
<b>35-65% Choice</b>	-	-
<b>0-35% Choice</b>	-	-
<b>Total All Grades</b>	278.00-282.00, avg 278.80	282.00

<u>All Beef Type Steers/Heifers</u>	<u>Head</u>	<u>Avg Wt</u>	<u>Price Range</u>	<u>Wtd Avg</u>
Live FOB	-	-	-	-
Live Del	-	-	-	-
Dressed Del	1139	872.8	277.00-292.00	282.42
Dressed FOB	-	-	-	-

**WEEKLY COMMODITY FUTURES TRENDS**

Compared to last week, Live Cattle 0.98 to 2.15 higher, Lean Hogs 0.07 to 0.93 lower, except May and June 0.17 to 0.45 higher, Feeder Cattle 2.00 to 2.35 higher.

**Daily Futures Closes**

	Mon.	Tues.	Wed.	Thu.	Fri.
<b>Cattle</b>					
Dec	174.92	175.85	177.77	174.75	175.75
Feb	175.25	176.87	178.77	175.32	176.80
Apr	177.45	178.80	180.47	177.10	178.42
Jun	172.50	173.72	175.02	172.20	173.45
Aug	173.17	174.32	175.22	172.42	173.60
<b>Lean Hogs</b>					
Dec	73.35	72.30	71.05	71.47	70.97
Feb	77.02	75.92	74.90	75.62	75.45
Apr	82.62	81.77	81.25	81.45	81.45
May	87.75	87.15	86.65	86.67	87.02
Jun	95.27	94.72	94.47	94.60	95.00
<b>Fdr Cat</b>					
Nov	230.72	230.05	229.42	229.37	—
Jan	238.30	229.00	230.90	227.50	228.50
Mar	230.07	231.37	233.50	230.10	230.97
Apr	233.65	234.97	237.30	233.70	234.50
May	237.07	238.65	240.85	237.05	237.77
<b>Milk</b>					
Nov	17.12	17.13	17.10	17.15	17.13
Dec	17.23	17.56	17.45	17.11	16.64
Jan	17.29	17.60	17.49	17.24	16.79

**WEEKLY COMMODITY GRAIN FUTURES TRENDS**

Compared to last week, Soybeans 0.01 to 0.07 lower, Wheat 0.22 to 0.25 lower, Corn 0.03 to 0.08 higher, KC Wheat 0.22 to 0.24 lower, Soybean Meal 0.50 to 3.90 higher.

Daily Grain Futures Closes

	Mon.	Tues.	Wed.	Thu.	Fri.
<b>Soybeans</b>					
Nov	1368	1368 3/4			
Jan	1382 1/2	1389 3/4	1385	1360 1/4	1340 1/4
Mar	1395	1402 1/2	1399 1/2	1375	1356 1/2
May	1405	1412 1/2	1410 3/4	1386 1/2	1369
Jul	1407 1/4	1414 1/2	1413 1/2	1389 1/4	1373 1/4
<b>Wheat</b>					
Dec	579	572	560 1/2	553 1/2	550 3/4
Mar	602 1/4	597 3/4	588	581	575 3/4
May	616 3/4	613	603 1/2	596 1/2	592
Jul	630	626 3/4	618	610	605 3/4
Sep	644 1/4	641 1/2	632 3/4	624 1/2	620 3/4
<b>Corn</b>					
Dec	477 1/4	478 1/4	470 3/4	474 3/4	467
Mar	492 3/4	494 1/4	488 1/2	493 1/4	485 1/4
May	502	503 3/4	498 1/2	503 1/2	496
Jul	510 3/4	512	507	511 1/2	504 1/2
Sep	511 3/4	512 1/2	507 1/2	511 1/2	506 1/2
<b>KC Wheat</b>					
Dec	641 1/2	639 3/4	639 3/4	627 1/4	618
Mar	652	649 1/2	648 1/4	636	627 1/2
May	658 1/2	656 1/2	654 3/4	642	633
Jul	664 3/4	662 3/4	660 3/4	647 3/4	639
Sep	675	672 3/4	670 1/2	658	649 1/4
<b>SB Meal</b>					
Dec	469.10	473.60	469.20	466.80	453.30
Jan	453.80	455.60	452.00	449.20	436.50
Mar	440.10	440.90	436.90	434.00	423.80
May	429.70	429.50	426.20	423.50	414.30
Jul	426.30	425.40	422.90	420.10	412.10

**MISSOURI GRAIN WEEKLY TRENDS**

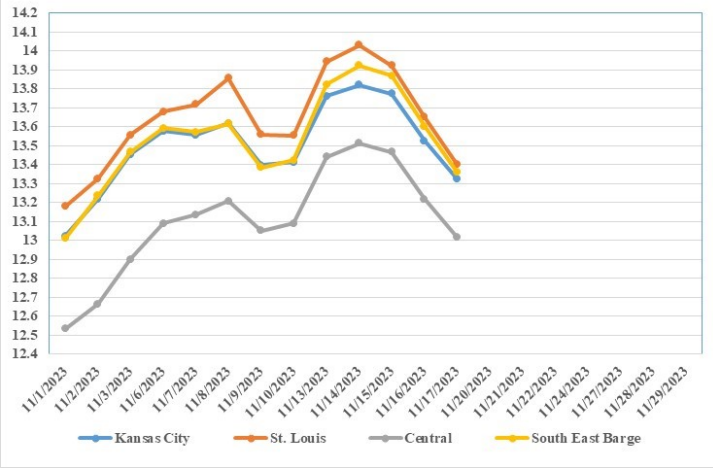
Compared to last week, Soybeans 0.07 to 0.20 lower, Wheat 0.24 to 0.27 lower, Corn 0.09 lower to 0.11 higher, Sorghum 0.12 lower to 0.03 higher.

Area	#1 Soybeans	#2 Soft Wheat	#2 Corn	#2 Grain Sorghum
<b>Kansas City</b>				
Friday**	13.28-13.68	5.30	4.49-4.74	4.99
Monday	13.63-14.03	5.34	4.62-4.87	5.12
Tuesday	13.70-14.05	5.27	4.63-4.88	5.13
Wednesday	13.65-14.00	5.16	4.56-4.81	5.06
Thursday	13.40-13.75	5.09	4.60-4.85	5.10
Friday	13.20-13.55	5.06	4.52-4.77	5.02
<b>St. Louis</b>				
Friday**	13.52-13.60	5.95-6.00	4.72-4.76	5.39
Monday	13.95	5.99	4.89	5.52
Tuesday	14.03-14.04	5.92-5.96	4.89-4.92	5.53
Wednesday	13.89-13.96	5.81	4.69-4.82	5.46
Thursday	13.58-13.72	5.74-5.78	4.71-4.83	5.40
Friday	13.32-13.48	5.71-5.73	4.63-4.75	5.27
<b>Central</b>				
Friday**	13.03-13.13	5.25	4.44	—
Monday	13.38-13.48	5.29	4.57	—
Tuesday	13.45-13.55	5.22	4.58	—
Wednesday	13.40-13.50	5.11	4.51	—
Thursday	13.15-13.25	5.04	4.55	—
Friday	12.95-13.05	5.01	4.47	—
<b>S.E. MO</b>				
Friday**	13.32-13.48	—	4.65-4.69	—
Monday	13.79-13.88	—	4.79-4.82	—
Tuesday	13.88-13.98	—	4.78-4.86	—
Wednesday	13.83-13.90	—	4.71-4.76	—
Thursday	13.55-13.65	—	4.67-4.75	—
Friday	13.30-13.40	—	4.57-4.67	—

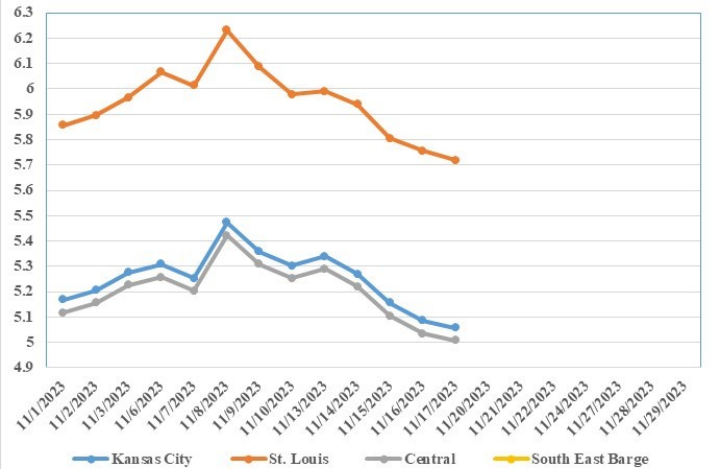
(PRICES PER BUSHEL) \*NEW CROP \*\*PREVIOUS WEEK'S PRICES  
\*Bids calculated using Kansas City, St. Louis, and St. Joseph bids

**MONTHLY GRAIN CROP**

November 2023 Soybean Bids



November 2023 Wheat Bids



November 2023 Corn Bids



\*Axis value ranges may be updated to reflect data points.

**WHOLESALE FEEDSTUFFS PRICES**  
(DOLLARS PER TON-BULK BASIS)

Area	Soybean Hulls Pellets	Soybean Meal 46.5-48%	Corn Gluten Pellets 21%	Wheat Middlings
Kansas City	196.67	478.30	267.50	173.33
St. Louis	n/a	n/a	255.00	161.67

**CATTLE ON FEED**

**United States Cattle on Feed Up 2 Percent**

**Cattle and calves on feed** for the slaughter market in the United States for feedlots with capacity of 1,000 or more head totaled 11.9 million head on November 1, 2023. The inventory was 2 percent above November 1, 2022.

**Placements** in feedlots during October totaled 2.16 million head, 4 percent above 2022. Net placements were 2.11 million head. During October, placements of cattle and calves weighing less than 600 pounds were 550,000 head, 600-699 pounds were 470,000 head, 700-799 pounds were 465,000 head, 800-899 pounds were 394,000 head, 900-999 pounds were 205,000 head, and 1,000 pounds and greater were 80,000 head.

**Marketings** of fed cattle during October totaled 1.76 million head, 3 percent below 2022.

**Other disappearance** totaled 55,000 head during October, 2 percent above 2022.

**MISSOURI WEEKLY SHEEP/GOAT AUCTION SUMMARY**

Receipts: 1,828 Week Ago: 2,363 Last Year: 616

**SHEEP:** Feeder lambs Small and Medium 1-2 28 lbs 180.00-212.00; 30-40 lbs 210.00-220.00. Small and Medium 1-2 hair 20-30 lbs 285.00-300.00; 30-40 lbs 230.00-265.00, thin 212.50; 40-50 lbs 230.00-265.00, fancy 300.00, thin 175.00; 50-60 lbs 230.00-237.50. Slaughter lambs Choice and Prime 1-3 w/s 85-180 lbs 145.00-155.00. Choice and Prime 1-2 wooled 23 hd 69 lbs 232.00. Choice and Prime 1-2 hair 45-80 lbs 200.00-240.00; 80-120 lbs 170.00-210.00. Choice and Prime 1-3 hair 50-60 lbs 237.50-265.00; 60-70 lbs 210.00-235.00; 70-80 lbs 175.00-187.50; 80-90 lbs 165.00-205.00; 90-115 lbs 132.50-177.50. Choice 1-3 hair 50-60 lbs 207.50-237.50; 60-70 lbs 167.50-197.50; 80-90 lbs 147.50-165.00. Slaughter ewes Utility and Good 2 100-140 lbs 90.00-110.00. Good 2-3 hair pkg 88 lbs 117.50; 90-165 lbs 90.00-115.00. Utility and Good 1-3 hair 80-150 lbs 70.00-87.50. Cull and Utility 1-2 hair 80-105 lbs 60.00-72.50. Slaughter bucks 1-2 175 lbs 105.00-115.00. Bucks 1-2 hair 145-220 lbs 100.00-122.50. Replacement ewes Medium and Large 1-2 2-4 yrs 137 lbs exp 120.00. Medium and Large 2 hair 2-4 yrs 90 lbs exp 125.00 per head. Small and Medium 1-2 hair 1-2 yrs 75-82 lbs exp 127.50-137.50; 2-4 yrs 90-115 lbs exp 112.50-140.00.

**GOATS:** Feeder kids Selection 1 30-60 lbs 240.00-325.00. Selection 1-2 30-40 lbs 180.00-210.00. Selection 2 30-40 lbs 130.00-270.00; 40-50 lbs 200.00-245.00. Selection 3 30-45 lbs 155.00-195.00. Slaughter kids Selection 1 50-75 lbs 262.00-295.00. Selection 1-2 40-50 lbs 200.00-210.00; 50-70 lbs 180.00-230.00; pkg 110 lbs 135.00. Selection 2 40-50 lbs 125.00-145.00; 50-60 lbs 155.00-245.00; 70-80 lbs 145.00-177.50; 80-105 lbs 187.50-225.00. Selection 3 55 lbs 150.00-180.00; 60-80 lbs 162.50-180.00, pygmies 175.00. Slaughter nannies/does Selection 1-2 pkg 55 lbs 135.00, pygmies 125.00; 60-70 lbs 100.00-145.00; 70-100 lbs 70.00-120.00; 100-145 lbs 90.00-135.00; 150-175 lbs 110.00-120.00. Slaughter bucks/billies Selection 1 160 lbs 155.00-162.00. Selection 1-2 75-85 lbs 95.00-100.00; 90-205 lbs 95.00-170.00. Slaughter wethers Selection 1-2 pkg 77 lbs pygmies 185.00; pkg 97 lbs 225.00. Wether kids Selection 1 pkg 81 lbs 270.00. Selection 2 55-75 lbs 202.50-237.50. Replacement nannies/does Selection 1-2 1-2 yrs 85-110 lbs exp 140.00-170.00; 2-4 yrs 63 lbs exp 175.00.

Explanatory Notes: Stage - Represents estimated lambing/kidding period (Open, Exp=exposed, Bred, Fall = Sep-Nov, Win = Dec-Feb, Spr = Mar-May, Sum=Jun-Aug; w/s = wooled and shorn; /hd= per head; /fam=per family All price CWT unless otherwise noted.

**MISSOURI DROUGHT MONITOR**

Date	None	D0	D1	D2	D3	D4
11/14/23	17.23	27.81	35.93	18.12	0.91	0
11/07/23	24.98	23.11	34.16	16.84	0.91	0
11/15/22	13.41	36.91	33.28	13.63	2.77	0

Reflects percentage of Missouri impacted by drought. D0 Abnormally Dry; D1 Moderate Drought; D2 Severe Drought; D3 Extreme Drought; D4 Exceptional Drought

**NATIONAL DIRECT DELIVERED FEEDER PIG REPORT**

11/17/23 Receipts: 144,153 Week ago: 119,637 Year Ago: 80,348 Early weaned pigs and feeder pigs 3.00 higher. Early weaned pigs 10-12 lbs. basis: Cash 106,910 head 16.00-34.00, weighted average 28.75 Formula 28,893 head 27.48-50.12, weighted average 36.28 Feeder pigs 40 pounds basis: Cash 8,350 head 38.00-49.00, weighted average 41.42

**NATIONAL DAILY DIRECT PRIOR DAY HOG REPORTS FOR 11/17/23**

**BARROWS AND GILTS (Carcass Basis):** 8,941 head Base Carcass Price 58.00-70.00, weighted average 63.38

**SOWS (Live Basis):** 6,247 head 300-500 lbs. 27.00-71.00 Over 500 lbs. 50.00-73.75

**MISSOURI WEEKLY DIRECT SLAUGHTER CATTLE REPORT 11/17/23**

Weekly Receipts: 0 Week ago: 520 Year ago: 320 Trading as of Friday morning, trade is inactive as producers are passing lower bids.

**LIVE STEERS & HEIFERS:** No sales reported **DRESSED STEERS & HEIFERS:** No sales reported

**GRADE AND WEIGHT (Grid):** No sales reported

**MISSOURI CROP PROGRESS AND CONDITION**

	Week Ending			2018-2022 Average
	11/12/23	11/05/23	11/12/22	
Corn harvested	94	89	93	91
Soybeans harvested	91	84	91	80
Cotton harvested	93	84	93	83
Winter wheat planted	85	78	92	81
Winter wheat emerged	65	55	70	62

**MISSOURI WEEKLY HAY SUMMARY 11/16/23**

Temperatures continue to be above average and dry. This is allowing for a lot of fall field work now that grain harvest is down to the short rows and is wrapped up for most in the state. Lack of moisture however has all but just a few counties along the southern border in some stage of drought with the latest monitor showing 82 percent of the state. Hay movement is moderate, prices are steady, the supply of hay is light to moderate and demand is moderate.

Alfalfa - Supreme 250.00-300.00, small square 10.00-15.00 per bale

Alfalfa - Premium 200.00-250.00

Alfalfa - Good 150.00-200.00, small square 5.00-10.00 per bale

Alfalfa - Fair 125.00-150.00

Alfalfa/grass mix - Good/Premium small square 5.00-10.00 per bale

Mixed grass - Good/Premium 150.00-225.00

Mixed grass - Fair/Good 100.00-175.00, small square 5.00-8.00 per bale

Mixed grass - Fair 50.00-100.00 per large round bale

Wheat straw - 4.00-7.00 per small square bale

Please Note: The above volumes (tonnage, acres, and bales) listed are for confirmed trades only, it does not include estimated volume (tonnage) for bids or offers to the trade. List your hay for sale at: [Hay Listing Online Form](#). Explanation of Hay Quality Guidelines: [Hay Quality Designation Guidelines](#). Glossary of Terms: [Livestock, Poultry, & Grain Hay Terms](#)

Click here for the current [National Crop Progress](#)  
Click here for the current [Missouri Crop Progress](#)  
The current hay directory can be found at: [Hay Directory](#).